



Full wwPDB X-ray Structure Validation Report ⓘ

Mar 5, 2026 – 09:10 AM UTC

PDB ID : 6UL5 / pdb_00006ul5
Title : Crystal structure of HIV-1 reverse transcriptase (RT) in complex with 4-[(4-{4-[(E)-2-cyanoethenyl]-2,6-dimethylphenoxy}thieno[3,2-d]pyrimidin-2-yl)amino]-2-fluorobenzonitrile (24b), a non-nucleoside RT inhibitor
Authors : Ruiz, F.X.; Pilch, A.; Arnold, E.
Deposited on : 2019-10-06
Resolution : 2.23 Å(reported)

This is a Full wwPDB X-ray Structure Validation Report for a publicly released PDB entry.

We welcome your comments at validation@mail.wwpdb.org

A user guide is available at

<https://www.wwpdb.org/validation/2017/XrayValidationReportHelp>

with specific help available everywhere you see the ⓘ symbol.

The types of validation reports are described at

<http://www.wwpdb.org/validation/2017/FAQs#types>.

The following versions of software and data (see [references ⓘ](#)) were used in the production of this report:

MolProbity : 4-5-2 with Phenix2.0
Mogul : 2022.3.0, CSD as543be (2022)
Xtriage (Phenix) : 2.0
EDS : 3.0
Buster-report : wwPDB partial adaption of 1.1.7 (2018)
Percentile statistics : 20250101.v01 (using entries in the PDB archive January 1st 2025)
CCP4 : 9.0.010 (Gargrove)
Density-Fitness : 1.0.12
Ideal geometry (proteins) : Engh & Huber (2001)
Ideal geometry (DNA, RNA) : Parkinson et al. (1996)
Validation Pipeline (wwPDB-VP) : 2.49

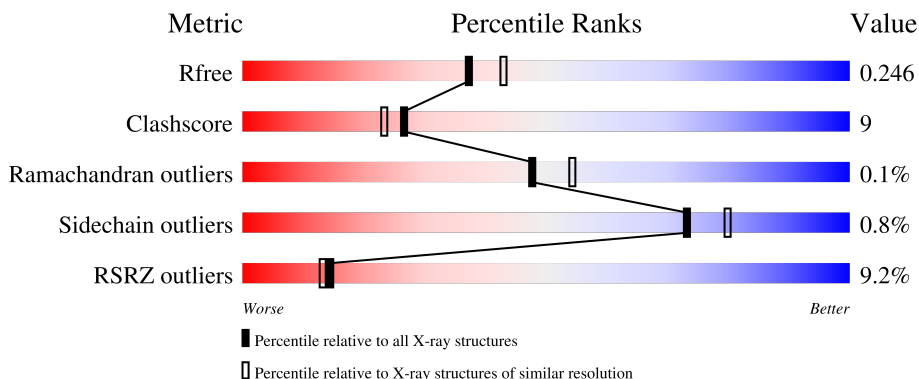
1 Overall quality at a glance

The following experimental techniques were used to determine the structure:

X-RAY DIFFRACTION

The reported resolution of this entry is 2.23 Å.

Percentile scores (ranging between 0-100) for global validation metrics of the entry are shown in the following graphic. The table shows the number of entries on which the scores are based.



Metric	Whole archive (#Entries)	Similar resolution (#Entries, resolution range(Å))
R_{free}	180053	3416 (2.26-2.22)
Clashscore	190562	3556 (2.26-2.22)
Ramachandran outliers	187476	3500 (2.26-2.22)
Sidechain outliers	187428	3501 (2.26-2.22)
RSRZ outliers	180081	3415 (2.26-2.22)

The table below summarises the geometric issues observed across the polymeric chains and their fit to the electron density. The red, orange, yellow and green segments of the lower bar indicate the fraction of residues that contain outliers for ≥ 3 , 2, 1 and 0 types of geometric quality criteria respectively. A grey segment represents the fraction of residues that are not modelled. The numeric value for each fraction is indicated below the corresponding segment, with a dot representing fractions $\leq 5\%$. The upper red bar (where present) indicates the fraction of residues that have poor fit to the electron density. The numeric value is given above the bar.

Mol	Chain	Length	Quality of chain
1	A	557	 7% 84% 16%
2	B	429	 11% 79% 18% ..

The following table lists non-polymeric compounds, carbohydrate monomers and non-standard residues in protein, DNA, RNA chains that are outliers for geometric or electron-density-fit criteria:

Mol	Type	Chain	Res	Chirality	Geometry	Clashes	Electron density
4	SO4	A	602	-	-	X	-

2 Entry composition [i](#)

There are 7 unique types of molecules in this entry. The entry contains 8399 atoms, of which 0 are hydrogens and 0 are deuteriums.

In the tables below, the ZeroOcc column contains the number of atoms modelled with zero occupancy, the AltConf column contains the number of residues with at least one atom in alternate conformation and the Trace column contains the number of residues modelled with at most 2 atoms.

- Molecule 1 is a protein called Reverse transcriptase p66.

Mol	Chain	Residues	Atoms					ZeroOcc	AltConf	Trace
			Total	C	N	O	S			
1	A	556	4528	2931	753	836	8	0	2	0

There are 5 discrepancies between the modelled and reference sequences:

Chain	Residue	Modelled	Actual	Comment	Reference
A	-1	MET	-	initiating methionine	UNP P03366
A	0	VAL	-	expression tag	UNP P03366
A	172	ALA	LYS	engineered mutation	UNP P03366
A	173	ALA	LYS	engineered mutation	UNP P03366
A	280	SER	CYS	engineered mutation	UNP P03366

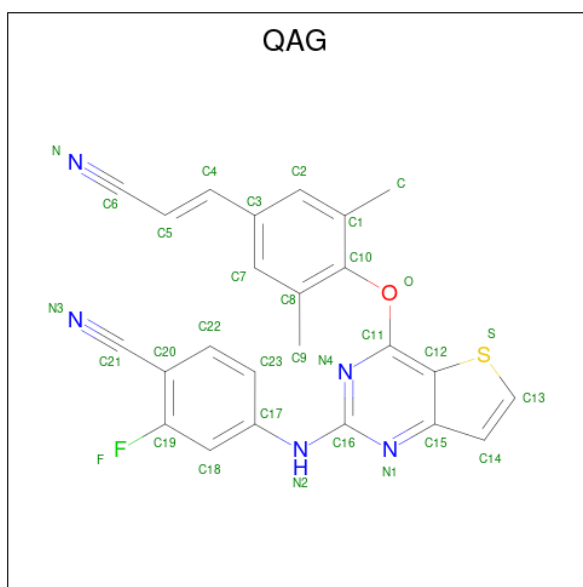
- Molecule 2 is a protein called Reverse transcriptase p51.

Mol	Chain	Residues	Atoms					ZeroOcc	AltConf	Trace
			Total	C	N	O	S			
2	B	416	3462	2256	571	628	7	0	3	0

There are 2 discrepancies between the modelled and reference sequences:

Chain	Residue	Modelled	Actual	Comment	Reference
B	0	GLY	-	expression tag	UNP P03366
B	280	SER	CYS	engineered mutation	UNP P03366

- Molecule 3 is 4-[(4-{4-[(E)-2-cyanoethenyl]-2,6-dimethylphenoxy}thieno[3,2-d]pyrimidin-2-yl)amino]-2-fluorobenzonitrile (CCD ID: QAG) (formula: C₂₄H₁₆FN₅OS) (labeled as "Ligand of Interest" by depositor).



Mol	Chain	Residues	Atoms					ZeroOcc	AltConf	
			Total	C	F	N	O			S
3	A	1	32	24	1	5	1	1	0	0

- Molecule 4 is SULFATE ION (CCD ID: SO4) (formula: O₄S).



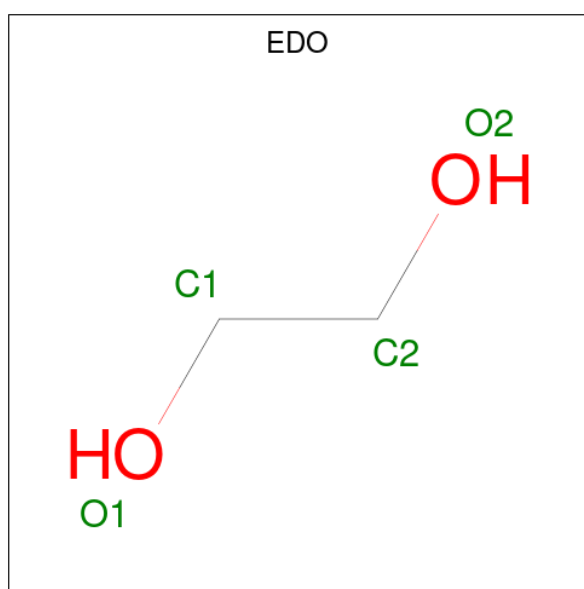
Mol	Chain	Residues	Atoms		ZeroOcc	AltConf
			Total	O S		
4	A	1	5	4 1	0	0
4	A	1	5	4 1	0	0
4	A	1	5	4 1	0	0

Continued on next page...

Continued from previous page...

Mol	Chain	Residues	Atoms	ZeroOcc	AltConf
4	A	1	Total O S 5 4 1	0	0
4	B	1	Total O S 5 4 1	0	0
4	B	1	Total O S 5 4 1	0	0
4	B	1	Total O S 5 4 1	0	0

- Molecule 5 is 1,2-ETHANEDIOL (CCD ID: EDO) (formula: C₂H₆O₂).



Mol	Chain	Residues	Atoms	ZeroOcc	AltConf
5	A	1	Total C O 4 2 2	0	0
5	A	1	Total C O 4 2 2	0	0
5	A	1	Total C O 4 2 2	0	0
5	A	1	Total C O 4 2 2	0	0
5	A	1	Total C O 4 2 2	0	0
5	B	1	Total C O 4 2 2	0	0

- Molecule 6 is MAGNESIUM ION (CCD ID: MG) (formula: Mg).

Mol	Chain	Residues	Atoms		ZeroOcc	AltConf
6	A	1	Total	Mg	0	0
			1	1		

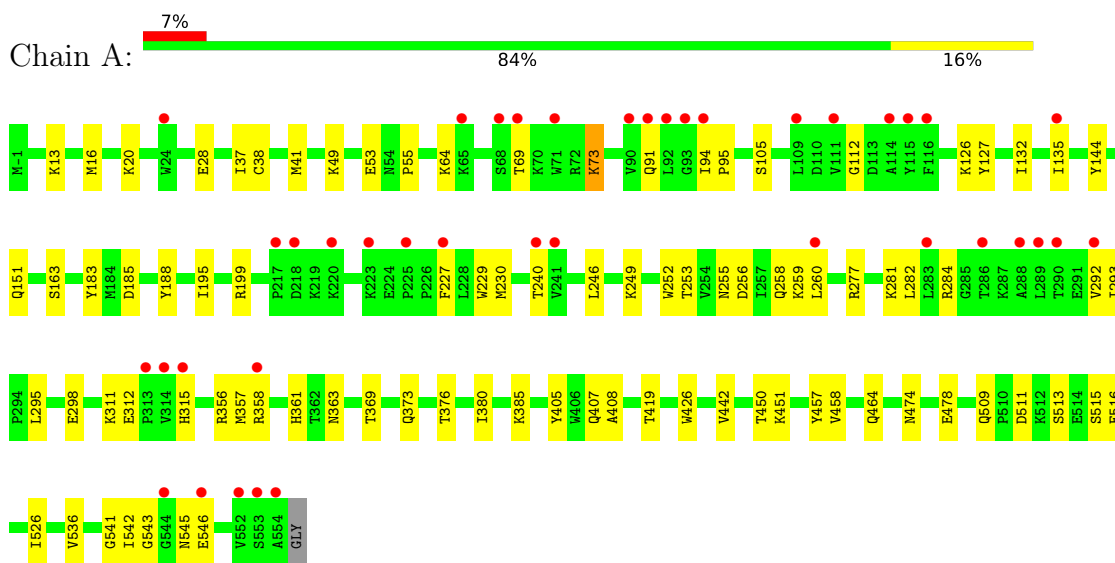
- Molecule 7 is water.

Mol	Chain	Residues	Atoms		ZeroOcc	AltConf
7	A	177	Total	O	0	0
			177	177		
7	B	140	Total	O	0	0
			140	140		

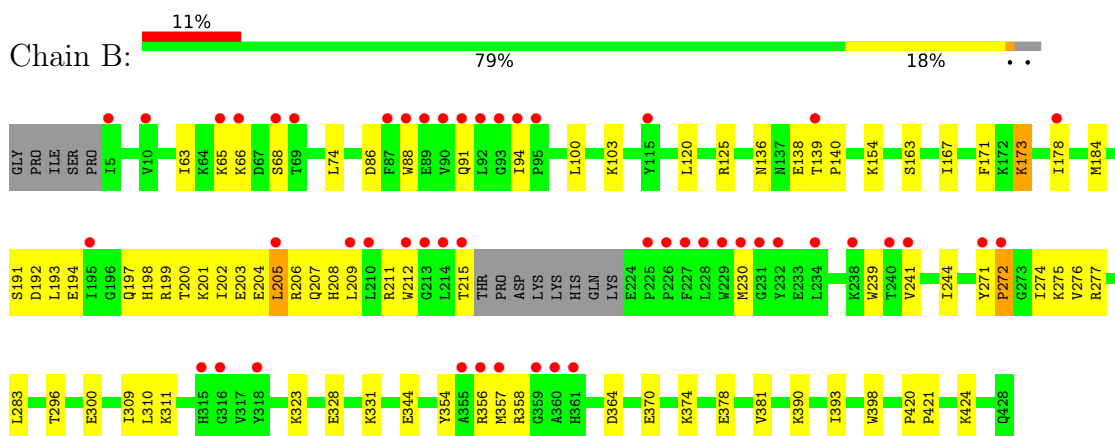
3 Residue-property plots i

These plots are drawn for all protein, RNA, DNA and oligosaccharide chains in the entry. The first graphic for a chain summarises the proportions of the various outlier classes displayed in the second graphic. The second graphic shows the sequence view annotated by issues in geometry and electron density. Residues are color-coded according to the number of geometric quality criteria for which they contain at least one outlier: green = 0, yellow = 1, orange = 2 and red = 3 or more. A red dot above a residue indicates a poor fit to the electron density ($RSRZ > 2$). Stretches of 2 or more consecutive residues without any outlier are shown as a green connector. Residues present in the sample, but not in the model, are shown in grey.

- Molecule 1: Reverse transcriptase p66



- Molecule 2: Reverse transcriptase p51



4 Data and refinement statistics

Property	Value	Source
Space group	C 1 2 1	Depositor
Cell constants a, b, c, α , β , γ	162.49Å 73.07Å 109.08Å 90.00° 100.29° 90.00°	Depositor
Resolution (Å)	41.27 – 2.23 41.27 – 2.23	Depositor EDS
% Data completeness (in resolution range)	97.8 (41.27-2.23) 97.7 (41.27-2.23)	Depositor EDS
R_{merge}	0.12	Depositor
R_{sym}	(Not available)	Depositor
$\langle I/\sigma(I) \rangle$ ¹	1.50 (at 2.24Å)	Xtrriage
Refinement program	PHENIX dev_3051	Depositor
R, R_{free}	0.211 , 0.245 0.211 , 0.246	Depositor DCC
R_{free} test set	2000 reflections (3.26%)	wwPDB-VP
Wilson B-factor (Å ²)	43.4	Xtrriage
Anisotropy	0.042	Xtrriage
Bulk solvent k_{sol} (e/Å ³), B_{sol} (Å ²)	0.32 , 37.2	EDS
L-test for twinning ²	$\langle L \rangle = 0.48$, $\langle L^2 \rangle = 0.31$	Xtrriage
Estimated twinning fraction	No twinning to report.	Xtrriage
F_o, F_c correlation	0.95	EDS
Total number of atoms	8399	wwPDB-VP
Average B, all atoms (Å ²)	55.0	wwPDB-VP

Xtrriage's analysis on translational NCS is as follows: *The largest off-origin peak in the Patterson function is 4.88% of the height of the origin peak. No significant pseudotranslation is detected.*

¹Intensities estimated from amplitudes.

²Theoretical values of $\langle |L| \rangle$, $\langle L^2 \rangle$ for acentric reflections are 0.5, 0.333 respectively for untwinned datasets, and 0.375, 0.2 for perfectly twinned datasets.

5 Model quality [i](#)

5.1 Standard geometry [i](#)

Bond lengths and bond angles in the following residue types are not validated in this section: MG, EDO, SO4, QAG

The Z score for a bond length (or angle) is the number of standard deviations the observed value is removed from the expected value. A bond length (or angle) with $|Z| > 5$ is considered an outlier worth inspection. RMSZ is the root-mean-square of all Z scores of the bond lengths (or angles).

Mol	Chain	Bond lengths		Bond angles	
		RMSZ	# Z >5	RMSZ	# Z >5
1	A	0.20	0/4654	0.39	2/6326 (0.0%)
2	B	0.22	0/3569	0.44	2/4849 (0.0%)
All	All	0.21	0/8223	0.41	4/11175 (0.0%)

There are no bond length outliers.

All (4) bond angle outliers are listed below:

Mol	Chain	Res	Type	Atoms	Z	Observed(°)	Ideal(°)
2	B	205	LEU	N-CA-C	-6.11	104.31	110.97
1	A	419	THR	CA-C-N	5.29	125.82	120.38
1	A	419	THR	C-N-CA	5.29	125.82	120.38
2	B	206	ARG	CB-CA-C	-5.22	102.08	110.74

There are no chirality outliers.

There are no planarity outliers.

5.2 Too-close contacts [i](#)

In the following table, the Non-H and H(model) columns list the number of non-hydrogen atoms and hydrogen atoms in the chain respectively. The H(added) column lists the number of hydrogen atoms added and optimized by MolProbity. The Clashes column lists the number of clashes within the asymmetric unit, whereas Symm-Clashes lists symmetry-related clashes.

Mol	Chain	Non-H	H(model)	H(added)	Clashes	Symm-Clashes
1	A	4528	0	4583	69	0
2	B	3462	0	3487	84	0
3	A	32	0	0	3	0
4	A	20	0	0	5	0
4	B	15	0	0	2	0

Continued on next page...

Continued from previous page...

Mol	Chain	Non-H	H(model)	H(added)	Clashes	Symm-Clashes
5	A	20	0	30	4	0
5	B	4	0	6	0	0
6	A	1	0	0	0	0
7	A	177	0	0	1	0
7	B	140	0	0	4	0
All	All	8399	0	8106	151	0

The all-atom clashscore is defined as the number of clashes found per 1000 atoms (including hydrogen atoms). The all-atom clashscore for this structure is 9.

All (151) close contacts within the same asymmetric unit are listed below, sorted by their clash magnitude.

Atom-1	Atom-2	Interatomic distance (Å)	Clash overlap (Å)
2:B:271:TYR:CE2	2:B:310:LEU:HD23	1.72	1.24
2:B:271:TYR:CE2	2:B:310:LEU:CD2	2.36	1.08
1:A:41:MET:HE1	1:A:73:LYS:HE3	1.34	1.02
2:B:271:TYR:CZ	2:B:310:LEU:HA	2.03	0.93
2:B:271:TYR:CZ	2:B:310:LEU:HD23	2.11	0.86
2:B:65:LYS:HD3	2:B:66:LYS:H	1.43	0.83
2:B:241:VAL:HB	7:B:664:HOH:O	1.78	0.83
1:A:41:MET:CE	1:A:73:LYS:HE3	2.09	0.83
1:A:474:ASN:HB2	5:A:606:EDO:H22	1.61	0.82
5:A:609:EDO:H11	2:B:140:PRO:HD3	1.61	0.82
2:B:94:ILE:HG12	7:B:684:HOH:O	1.80	0.81
2:B:171:PHE:CE2	2:B:205:LEU:HD11	2.16	0.80
2:B:271:TYR:CD1	2:B:309:ILE:HG22	2.20	0.75
1:A:256:ASP:OD1	1:A:259:LYS:NZ	2.20	0.74
1:A:41:MET:HE1	1:A:73:LYS:CE	2.14	0.72
2:B:271:TYR:OH	2:B:310:LEU:HA	1.91	0.70
2:B:271:TYR:CD2	2:B:310:LEU:HD23	2.27	0.70
2:B:171:PHE:CZ	2:B:205:LEU:HD11	2.27	0.69
2:B:184:MET:HE3	7:B:652:HOH:O	1.92	0.68
1:A:253:THR:HG22	1:A:292:VAL:HG12	1.73	0.68
1:A:13:LYS:HB2	1:A:16:MET:HG3	1.76	0.68
1:A:281:LYS:HA	1:A:284:ARG:HD2	1.77	0.67
1:A:163:SER:HA	5:A:610:EDO:H11	1.76	0.65
1:A:311:LYS:HD2	1:A:312:GLU:HB3	1.78	0.65
2:B:139:THR:CG2	2:B:140:PRO:HD2	2.27	0.65
2:B:199:ARG:H	2:B:199:ARG:HD2	1.62	0.65
1:A:229:TRP:HB2	3:A:601:QAG:N	2.13	0.63
2:B:354:TYR:HB3	2:B:357:MET:HE3	1.81	0.62

Continued on next page...

Continued from previous page...

Atom-1	Atom-2	Interatomic distance (Å)	Clash overlap (Å)
1:A:240:THR:OG1	1:A:315[A]:HIS:ND1	2.31	0.62
2:B:296:THR:O	2:B:300:GLU:HG3	1.99	0.62
1:A:94:ILE:HD11	1:A:230:MET:HG3	1.82	0.61
2:B:271:TYR:CE2	2:B:310:LEU:HD22	2.35	0.60
2:B:199:ARG:H	2:B:199:ARG:CD	2.15	0.60
2:B:139:THR:HG23	2:B:140:PRO:HD2	1.82	0.59
2:B:323:LYS:NZ	2:B:344:GLU:OE2	2.34	0.59
1:A:542:ILE:O	1:A:546:GLU:HG2	2.02	0.59
2:B:311:LYS:NZ	7:B:604:HOH:O	2.35	0.59
2:B:65:LYS:HD3	2:B:66:LYS:N	2.14	0.58
2:B:209:LEU:HA	2:B:212:TRP:HD1	1.69	0.58
2:B:271:TYR:CE1	2:B:309:ILE:O	2.57	0.58
2:B:358:ARG:NH2	2:B:370[B]:GLU:OE1	2.37	0.57
1:A:195:ILE:O	1:A:199:ARG:HG3	2.03	0.57
2:B:68:SER:HB2	2:B:230:MET:HE1	1.86	0.57
2:B:356:ARG:HH21	2:B:358:ARG:HA	1.67	0.57
2:B:173:LYS:HA	2:B:173:LYS:HE2	1.85	0.57
1:A:37:ILE:HG22	1:A:41:MET:HE2	1.87	0.57
2:B:201:LYS:HA	2:B:204:GLU:OE1	2.06	0.56
2:B:199:ARG:HD2	2:B:199:ARG:N	2.19	0.56
1:A:281:LYS:HE3	4:A:605:SO4:O4	2.05	0.56
1:A:284:ARG:HH22	1:A:358:ARG:NH1	2.03	0.56
2:B:173:LYS:O	2:B:173:LYS:HD3	2.06	0.56
2:B:271:TYR:CD1	2:B:309:ILE:CG2	2.87	0.55
2:B:100:LEU:HG	2:B:381:VAL:HG13	1.89	0.55
2:B:271:TYR:CD2	2:B:310:LEU:CD2	2.87	0.55
1:A:151:GLN:HG3	4:A:602:SO4:O2	2.06	0.54
2:B:276:VAL:H	2:B:277:ARG:HH11	1.56	0.54
1:A:227:PHE:HB3	3:A:601:QAG:N	2.23	0.54
1:A:252:TRP:CD1	1:A:295:LEU:HD11	2.44	0.53
2:B:171:PHE:CZ	2:B:178:ILE:HD12	2.43	0.53
1:A:229:TRP:HB2	3:A:601:QAG:C6	2.38	0.53
1:A:151:GLN:HG2	4:A:602:SO4:O1	2.09	0.53
2:B:207:GLN:O	2:B:211:ARG:HG3	2.09	0.53
1:A:253:THR:HA	1:A:292:VAL:HA	1.90	0.52
2:B:139:THR:CG2	2:B:140:PRO:CD	2.87	0.52
2:B:193:LEU:HD11	2:B:198:HIS:HA	1.92	0.52
1:A:277:ARG:CZ	1:A:281:LYS:HD2	2.40	0.52
2:B:204:GLU:O	2:B:208:HIS:ND1	2.41	0.52
2:B:331:LYS:NZ	2:B:364:ASP:OD2	2.32	0.52
2:B:424:LYS:NZ	4:B:502:SO4:O4	2.44	0.51

Continued on next page...

Continued from previous page...

Atom-1	Atom-2	Interatomic distance (Å)	Clash overlap (Å)
1:A:298:GLU:OE1	1:A:298:GLU:N	2.43	0.51
2:B:208:HIS:O	2:B:211:ARG:N	2.44	0.50
1:A:515:SER:OG	4:A:603:SO4:O1	2.24	0.49
2:B:163:SER:O	2:B:167:ILE:HD12	2.12	0.49
2:B:193:LEU:HD12	2:B:197:GLN:HB2	1.94	0.49
2:B:271:TYR:HE1	2:B:309:ILE:O	1.95	0.49
2:B:167:ILE:HG23	2:B:212:TRP:NE1	2.26	0.49
2:B:193:LEU:HD21	2:B:198:HIS:HB2	1.95	0.49
2:B:103:LYS:HE3	2:B:191:SER:HA	1.95	0.49
1:A:376:THR:O	1:A:380:ILE:HG12	2.13	0.49
1:A:311:LYS:HD2	1:A:311:LYS:C	2.38	0.48
1:A:369:THR:O	1:A:373[B]:GLN:HG2	2.13	0.48
1:A:426:TRP:HB3	1:A:526:ILE:HG12	1.95	0.48
2:B:139:THR:HG22	2:B:140:PRO:HD2	1.95	0.48
1:A:53:GLU:OE2	1:A:53:GLU:N	2.36	0.48
1:A:295:LEU:HD12	1:A:295:LEU:H	1.79	0.48
1:A:94:ILE:CD1	1:A:230:MET:HG3	2.45	0.47
1:A:183:TYR:HB3	1:A:188:TYR:HE1	1.79	0.47
2:B:211:ARG:O	2:B:215:THR:HG23	2.14	0.47
2:B:63:ILE:HD13	2:B:74:LEU:HD22	1.96	0.47
1:A:49:LYS:HG2	1:A:144:TYR:CE1	2.50	0.46
1:A:536:VAL:HB	1:A:542:ILE:HD13	1.97	0.46
1:A:126:LYS:HE3	1:A:127:TYR:CZ	2.51	0.46
1:A:94:ILE:HG13	1:A:95:PRO:HD2	1.97	0.46
1:A:249:LYS:HB2	1:A:252:TRP:CE2	2.51	0.46
1:A:282:LEU:HB3	1:A:293:ILE:HG21	1.98	0.46
2:B:198:HIS:O	2:B:202:ILE:HG12	2.16	0.46
2:B:171:PHE:CD2	2:B:205:LEU:HD11	2.51	0.46
2:B:209:LEU:HA	2:B:212:TRP:CD1	2.50	0.46
1:A:450:THR:O	1:A:451:LYS:HB2	2.17	0.45
1:A:543:GLY:N	2:B:283:LEU:O	2.45	0.45
2:B:244:ILE:HD12	2:B:271:TYR:HE2	1.81	0.45
2:B:271:TYR:CE1	2:B:310:LEU:HA	2.47	0.45
2:B:393:ILE:HD13	2:B:398:TRP:HB2	1.98	0.45
1:A:91:GLN:H	1:A:91:GLN:CD	2.24	0.45
1:A:478:GLU:HG2	7:A:824:HOH:O	2.17	0.45
1:A:405:TYR:CE2	1:A:407:GLN:HB2	2.52	0.45
2:B:86:ASP:OD2	2:B:154:LYS:NZ	2.48	0.45
1:A:509:GLN:HB3	5:A:608:EDO:H11	1.99	0.44
1:A:442:VAL:HG12	1:A:457:TYR:HB3	1.99	0.44
2:B:198:HIS:HB3	2:B:199:ARG:HH11	1.82	0.44

Continued on next page...

Continued from previous page...

Atom-1	Atom-2	Interatomic distance (Å)	Clash overlap (Å)
1:A:246:LEU:HD22	1:A:260:LEU:HD12	2.00	0.44
1:A:356:ARG:HH21	1:A:358:ARG:HH22	1.65	0.44
1:A:458:VAL:HG12	1:A:464:GLN:HG2	2.00	0.44
2:B:171:PHE:HZ	2:B:178:ILE:HD12	1.82	0.44
1:A:541:GLY:N	1:A:546:GLU:OE1	2.50	0.44
1:A:38:CYS:SG	1:A:132:ILE:HD11	2.58	0.44
1:A:363:ASN:HA	1:A:511:ASP:OD1	2.18	0.44
2:B:356:ARG:O	2:B:357:MET:HE2	2.18	0.43
1:A:281:LYS:NZ	1:A:281:LYS:HB3	2.33	0.43
2:B:139:THR:HG22	2:B:140:PRO:CD	2.49	0.43
2:B:136:ASN:HB3	2:B:138:GLU:HG3	2.01	0.43
2:B:88:TRP:HA	2:B:91:GLN:O	2.18	0.43
2:B:193:LEU:HD21	2:B:198:HIS:CB	2.49	0.43
1:A:112:GLY:HA2	1:A:185:ASP:OD2	2.18	0.43
2:B:139:THR:HG22	2:B:140:PRO:N	2.33	0.42
1:A:64:LYS:NZ	1:A:69:THR:HA	2.34	0.42
1:A:542:ILE:O	1:A:545:ASN:HB3	2.19	0.42
2:B:274:ILE:C	2:B:275:LYS:HG2	2.44	0.42
1:A:356:ARG:HG2	1:A:357:MET:O	2.19	0.42
2:B:66:LYS:HE2	2:B:358:ARG:CD	2.49	0.42
1:A:542:ILE:C	1:A:546:GLU:HG2	2.44	0.42
1:A:20:LYS:NZ	1:A:55:PRO:HB2	2.34	0.42
2:B:120:LEU:HD23	2:B:125:ARG:HG2	2.01	0.42
2:B:239:TRP:NE1	4:B:501:SO4:O4	2.53	0.42
2:B:103:LYS:NZ	2:B:192:ASP:OD2	2.49	0.41
2:B:193:LEU:HG	2:B:194:GLU:O	2.20	0.41
1:A:28:GLU:HG3	1:A:135:ILE:HD12	2.03	0.41
1:A:255:ASN:O	1:A:258:GLN:HG2	2.19	0.41
2:B:328:GLU:HG2	2:B:390:LYS:HD3	2.02	0.41
1:A:256:ASP:HA	1:A:259:LYS:HE3	2.02	0.41
2:B:271:TYR:HA	2:B:272:PRO:HD3	1.75	0.41
2:B:167:ILE:HG23	2:B:212:TRP:CD1	2.55	0.41
2:B:420:PRO:HA	2:B:421:PRO:HD3	1.97	0.41
1:A:361:HIS:ND1	1:A:513:SER:OG	2.48	0.41
1:A:151:GLN:CG	4:A:602:SO4:O2	2.69	0.41
1:A:408:ALA:HB1	2:B:364:ASP:HB3	2.03	0.40
1:A:41:MET:SD	1:A:73:LYS:HE3	2.61	0.40
1:A:312:GLU:OE1	1:A:312:GLU:N	2.53	0.40
2:B:171:PHE:CZ	2:B:205:LEU:CD1	3.02	0.40
2:B:200:THR:O	2:B:204:GLU:HG3	2.22	0.40
2:B:354:TYR:OH	2:B:378:GLU:OE2	2.38	0.40

There are no symmetry-related clashes.

5.3 Torsion angles [i](#)

5.3.1 Protein backbone [i](#)

In the following table, the Percentiles column shows the percent Ramachandran outliers of the chain as a percentile score with respect to all X-ray entries followed by that with respect to entries of similar resolution.

The Analysed column shows the number of residues for which the backbone conformation was analysed, and the total number of residues.

Mol	Chain	Analysed	Favoured	Allowed	Outliers	Percentiles	
1	A	556/557 (100%)	545 (98%)	11 (2%)	0	100	100
2	B	415/429 (97%)	394 (95%)	20 (5%)	1 (0%)	43	48
All	All	971/986 (98%)	939 (97%)	31 (3%)	1 (0%)	48	54

All (1) Ramachandran outliers are listed below:

Mol	Chain	Res	Type
2	B	272	PRO

5.3.2 Protein sidechains [i](#)

In the following table, the Percentiles column shows the percent sidechain outliers of the chain as a percentile score with respect to all X-ray entries followed by that with respect to entries of similar resolution.

The Analysed column shows the number of residues for which the sidechain conformation was analysed, and the total number of residues.

Mol	Chain	Analysed	Rotameric	Outliers	Percentiles	
1	A	497/495 (100%)	493 (99%)	4 (1%)	73	80
2	B	381/390 (98%)	378 (99%)	3 (1%)	73	80
All	All	878/885 (99%)	871 (99%)	7 (1%)	73	80

All (7) residues with a non-rotameric sidechain are listed below:

Mol	Chain	Res	Type
1	A	73	LYS
1	A	105	SER

Continued on next page...

Continued from previous page...

Mol	Chain	Res	Type
1	A	385	LYS
1	A	516	GLU
2	B	173	LYS
2	B	203	GLU
2	B	374	LYS

Sometimes sidechains can be flipped to improve hydrogen bonding and reduce clashes. All (5) such sidechains are listed below:

Mol	Chain	Res	Type
1	A	474	ASN
1	A	487	GLN
2	B	147	ASN
2	B	182	GLN
2	B	269	GLN

5.3.3 RNA [i](#)

There are no RNA molecules in this entry.

5.4 Non-standard residues in protein, DNA, RNA chains [i](#)

There are no non-standard protein/DNA/RNA residues in this entry.

5.5 Carbohydrates [i](#)

There are no oligosaccharides in this entry.

5.6 Ligand geometry [i](#)

Of 15 ligands modelled in this entry, 1 is monoatomic - leaving 14 for Mogul analysis.

In the following table, the Counts columns list the number of bonds (or angles) for which Mogul statistics could be retrieved, the number of bonds (or angles) that are observed in the model and the number of bonds (or angles) that are defined in the Chemical Component Dictionary. The Link column lists molecule types, if any, to which the group is linked. The Z score for a bond length (or angle) is the number of standard deviations the observed value is removed from the expected value. A bond length (or angle) with $|Z| > 2$ is considered an outlier worth inspection. RMSZ is the root-mean-square of all Z scores of the bond lengths (or angles).

Mol	Type	Chain	Res	Link	Bond lengths			Bond angles		
					Counts	RMSZ	# Z > 2	Counts	RMSZ	# Z > 2
4	SO4	B	501	-	4,4,4	0.25	0	6,6,6	0.13	0
5	EDO	B	504	-	3,3,3	0.41	0	2,2,2	0.54	0
4	SO4	A	604	-	4,4,4	0.43	0	6,6,6	0.07	0
4	SO4	B	503	-	4,4,4	0.20	0	6,6,6	0.71	0
3	QAG	A	601	-	35,35,35	0.75	1 (2%)	44,49,49	1.28	6 (13%)
4	SO4	A	603	-	4,4,4	0.42	0	6,6,6	0.08	0
5	EDO	A	607	-	3,3,3	0.48	0	2,2,2	0.52	0
5	EDO	A	608	-	3,3,3	0.39	0	2,2,2	0.48	0
5	EDO	A	606	-	3,3,3	0.41	0	2,2,2	0.57	0
4	SO4	A	605	-	4,4,4	0.34	0	6,6,6	0.77	0
5	EDO	A	610	-	3,3,3	0.32	0	2,2,2	0.15	0
5	EDO	A	609	-	3,3,3	0.50	0	2,2,2	0.36	0
4	SO4	B	502	-	4,4,4	0.21	0	6,6,6	0.51	0
4	SO4	A	602	-	4,4,4	0.43	0	6,6,6	0.07	0

In the following table, the Chirals column lists the number of chiral outliers, the number of chiral centers analysed, the number of these observed in the model and the number defined in the Chemical Component Dictionary. Similar counts are reported in the Torsion and Rings columns. '-' means no outliers of that kind were identified.

Mol	Type	Chain	Res	Link	Chirals	Torsions	Rings
5	EDO	B	504	-	-	1/1/1/1	-
3	QAG	A	601	-	-	1/13/14/14	0/4/4/4
5	EDO	A	607	-	-	1/1/1/1	-
5	EDO	A	606	-	-	0/1/1/1	-
5	EDO	A	610	-	-	1/1/1/1	-
5	EDO	A	609	-	-	1/1/1/1	-
5	EDO	A	608	-	-	0/1/1/1	-

All (1) bond length outliers are listed below:

Mol	Chain	Res	Type	Atoms	Z	Observed(Å)	Ideal(Å)
3	A	601	QAG	C15-C14	4.12	1.48	1.42

All (6) bond angle outliers are listed below:

Mol	Chain	Res	Type	Atoms	Z	Observed(°)	Ideal(°)
3	A	601	QAG	C15-C12-C11	-4.50	114.21	121.45
3	A	601	QAG	C10-O-C11	3.60	120.59	116.84
3	A	601	QAG	O-C11-C12	-3.07	114.53	117.66
3	A	601	QAG	C11-C12-S	2.54	132.65	126.11
3	A	601	QAG	C15-C12-S	2.32	113.14	110.75

Continued on next page...

Continued from previous page...

Mol	Chain	Res	Type	Atoms	Z	Observed(°)	Ideal(°)
3	A	601	QAG	C12-C11-N4	2.09	125.91	123.78

There are no chirality outliers.

All (5) torsion outliers are listed below:

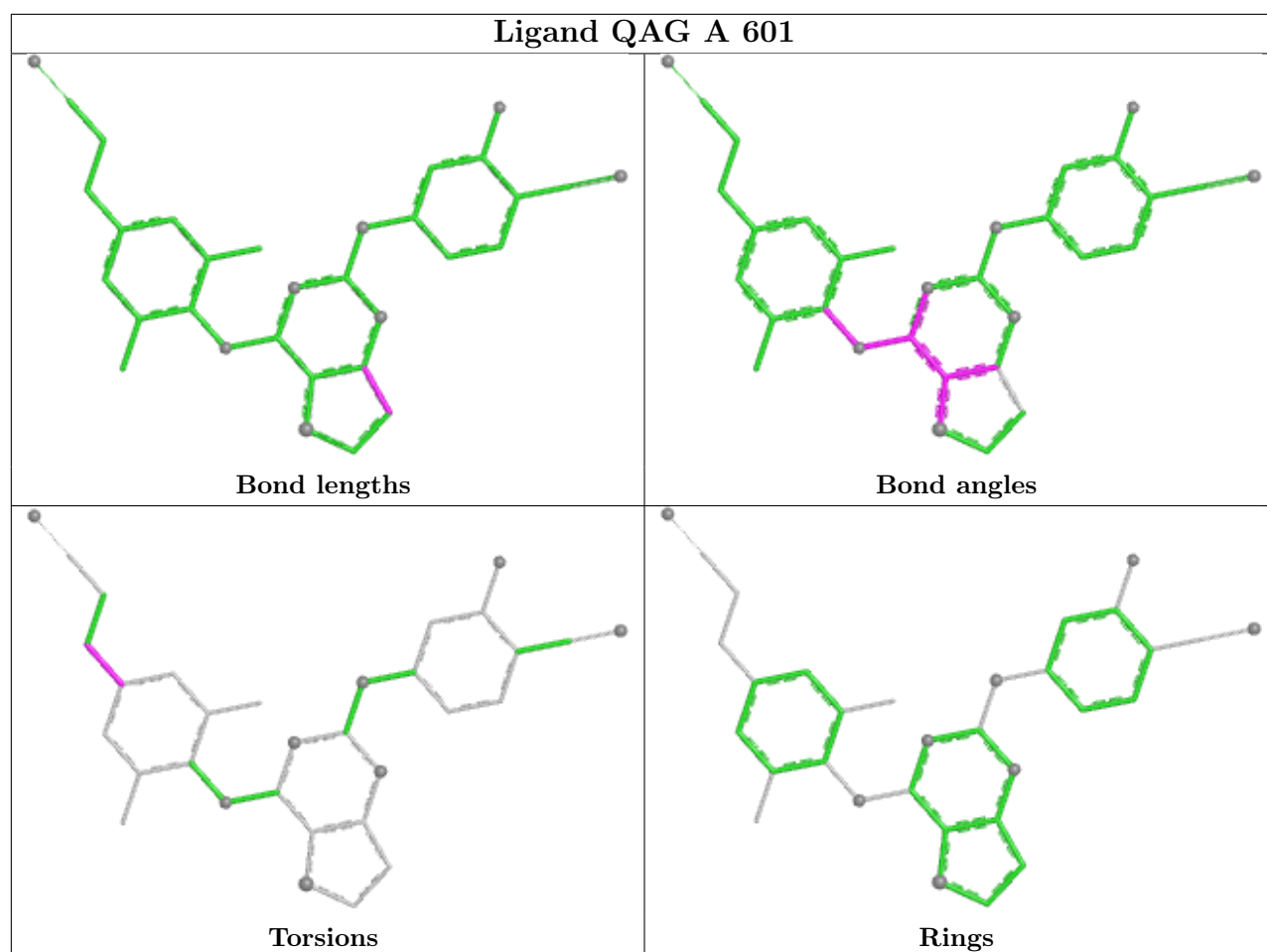
Mol	Chain	Res	Type	Atoms
5	B	504	EDO	O1-C1-C2-O2
5	A	607	EDO	O1-C1-C2-O2
5	A	609	EDO	O1-C1-C2-O2
5	A	610	EDO	O1-C1-C2-O2
3	A	601	QAG	C7-C3-C4-C5

There are no ring outliers.

10 monomers are involved in 14 short contacts:

Mol	Chain	Res	Type	Clashes	Symm-Clashes
4	B	501	SO4	1	0
3	A	601	QAG	3	0
4	A	603	SO4	1	0
5	A	608	EDO	1	0
5	A	606	EDO	1	0
4	A	605	SO4	1	0
5	A	610	EDO	1	0
5	A	609	EDO	1	0
4	B	502	SO4	1	0
4	A	602	SO4	3	0

The following is a two-dimensional graphical depiction of Mogul quality analysis of bond lengths, bond angles, torsion angles, and ring geometry for all instances of the Ligand of Interest. In addition, ligands with molecular weight > 250 and outliers as shown on the validation Tables will also be included. For torsion angles, if less than 5% of the Mogul distribution of torsion angles is within 10 degrees of the torsion angle in question, then that torsion angle is considered an outlier. Any bond that is central to one or more torsion angles identified as an outlier by Mogul will be highlighted in the graph. For rings, the root-mean-square deviation (RMSD) between the ring in question and similar rings identified by Mogul is calculated over all ring torsion angles. If the average RMSD is greater than 60 degrees and the minimal RMSD between the ring in question and any Mogul-identified rings is also greater than 60 degrees, then that ring is considered an outlier. The outliers are highlighted in purple. The color gray indicates Mogul did not find sufficient equivalents in the CSD to analyse the geometry.



5.7 Other polymers [\(i\)](#)

There are no such residues in this entry.

5.8 Polymer linkage issues [\(i\)](#)

There are no chain breaks in this entry.

6 Fit of model and data [i](#)

6.1 Protein, DNA and RNA chains [i](#)

In the following table, the column labelled '#RSRZ > 2' contains the number (and percentage) of RSRZ outliers, followed by percent RSRZ outliers for the chain as percentile scores relative to all X-ray entries and entries of similar resolution. The OWAB column contains the minimum, median, 95th percentile and maximum values of the occupancy-weighted average B-factor per residue. The column labelled 'Q < 0.9' lists the number of (and percentage) of residues with an average occupancy less than 0.9.

Mol	Chain	Analysed	<RSRZ>	#RSRZ>2	OWAB(Å ²)	Q<0.9
1	A	556/557 (99%)	0.35	40 (7%) 21 20	21, 50, 89, 129	2 (0%)
2	B	416/429 (96%)	0.51	49 (11%) 9 8	19, 51, 104, 127	3 (0%)
All	All	972/986 (98%)	0.42	89 (9%) 14 13	19, 51, 100, 129	5 (0%)

All (89) RSRZ outliers are listed below:

Mol	Chain	Res	Type	RSRZ
2	B	271	TYR	7.2
2	B	92	LEU	7.1
1	A	92	LEU	6.5
2	B	90	VAL	6.3
2	B	95	PRO	5.1
1	A	544	GLY	4.7
1	A	90	VAL	4.4
2	B	227	PHE	4.3
2	B	209	LEU	4.0
2	B	5	ILE	4.0
2	B	226	PRO	3.9
2	B	228	LEU	3.9
2	B	231	GLY	3.8
2	B	212	TRP	3.8
1	A	289	LEU	3.7
2	B	229	TRP	3.6
2	B	210	LEU	3.5
1	A	65	LYS	3.5
1	A	552	VAL	3.4
2	B	214	LEU	3.4
1	A	94	ILE	3.3
2	B	94	ILE	3.3
2	B	241	VAL	3.3
2	B	315[A]	HIS	3.2

Continued on next page...

Continued from previous page...

Mol	Chain	Res	Type	RSRZ
2	B	232	TYR	3.1
1	A	227	PHE	3.1
1	A	218	ASP	3.1
1	A	109	LEU	3.1
2	B	225	PRO	3.0
2	B	93	GLY	3.0
1	A	114	ALA	3.0
2	B	359	GLY	3.0
2	B	205	LEU	2.9
1	A	220	LYS	2.9
1	A	241	VAL	2.9
2	B	357	MET	2.9
1	A	217	PRO	2.8
1	A	283	LEU	2.8
1	A	315[A]	HIS	2.7
1	A	71	TRP	2.7
1	A	546	GLU	2.7
2	B	69	THR	2.7
2	B	88	TRP	2.7
2	B	272	PRO	2.7
2	B	139	THR	2.6
1	A	135	ILE	2.6
1	A	91	GLN	2.6
2	B	360	ALA	2.6
2	B	89	GLU	2.6
2	B	356	ARG	2.6
1	A	24	TRP	2.5
2	B	65	LYS	2.5
2	B	66	LYS	2.5
2	B	195	ILE	2.5
1	A	313	PRO	2.5
1	A	240	THR	2.4
2	B	234	LEU	2.4
2	B	318	TYR	2.4
1	A	69	THR	2.4
2	B	230	MET	2.4
2	B	115	TYR	2.3
1	A	111	VAL	2.3
2	B	87	PHE	2.3
1	A	115	TYR	2.3
1	A	314	VAL	2.3
1	A	554	ALA	2.3

Continued on next page...

Continued from previous page...

Mol	Chain	Res	Type	RSRZ
2	B	355	ALA	2.3
1	A	225	PRO	2.2
1	A	223	LYS	2.2
1	A	93	GLY	2.2
2	B	316	GLY	2.2
2	B	361	HIS	2.2
2	B	91	GLN	2.2
2	B	215	THR	2.2
1	A	260	LEU	2.2
1	A	116	PHE	2.2
1	A	292	VAL	2.1
2	B	238	LYS	2.1
1	A	288	ALA	2.1
1	A	553	SER	2.1
2	B	68	SER	2.1
1	A	290	THR	2.1
2	B	10	VAL	2.1
2	B	213	GLY	2.1
1	A	68	SER	2.1
2	B	240	THR	2.1
1	A	286	THR	2.0
1	A	358	ARG	2.0
2	B	178	ILE	2.0

6.2 Non-standard residues in protein, DNA, RNA chains [i](#)

There are no non-standard protein/DNA/RNA residues in this entry.

6.3 Carbohydrates [i](#)

There are no oligosaccharides in this entry.

6.4 Ligands [i](#)

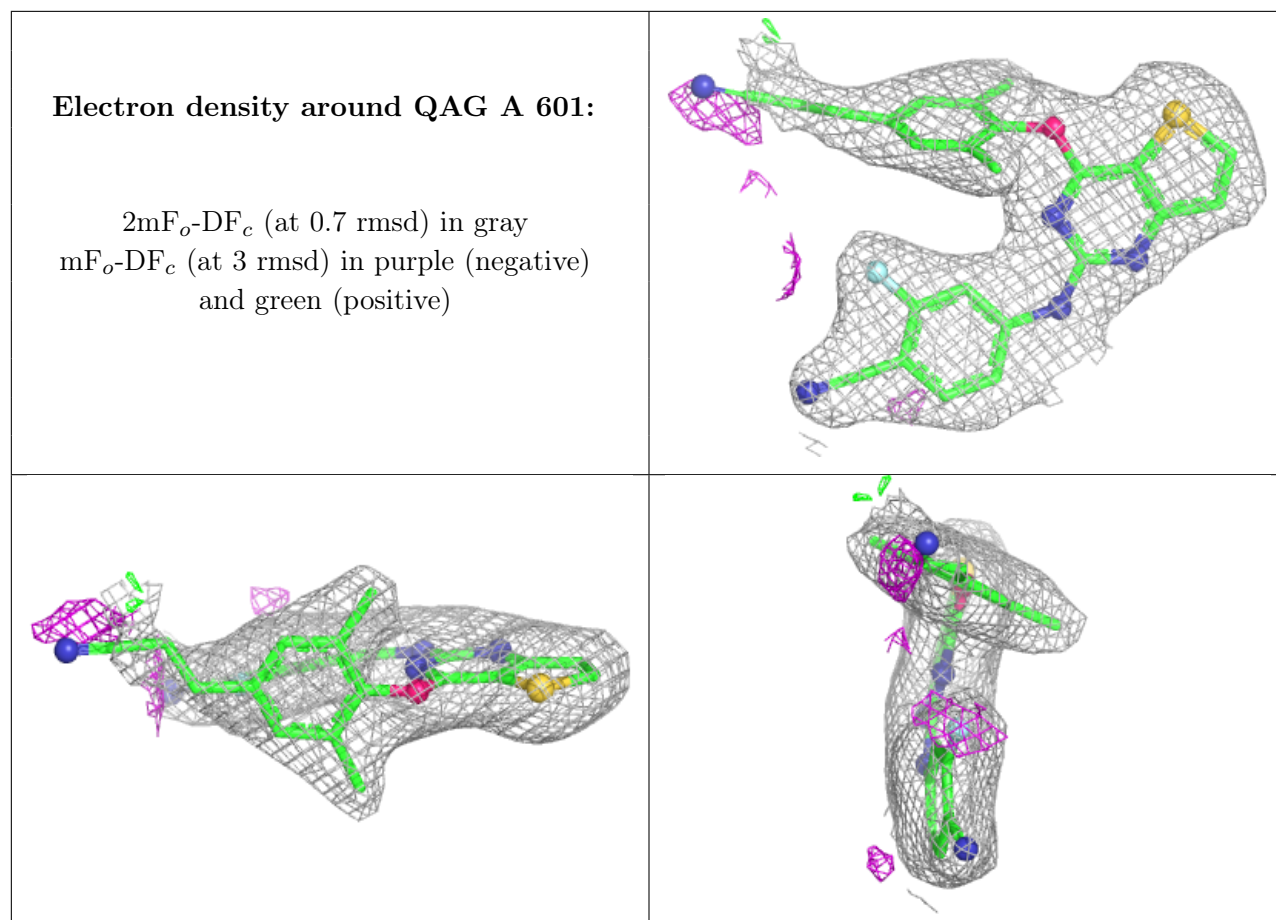
In the following table, the Atoms column lists the number of modelled atoms in the group and the number defined in the chemical component dictionary. The B-factors column lists the minimum, median, 95th percentile and maximum values of B factors of atoms in the group. The column labelled 'Q< 0.9' lists the number of atoms with occupancy less than 0.9.

Continued on next page...

Continued from previous page...

Mol	Type	Chain	Res	Atoms	RSCC	RSR	B-factors(Å ²)	Q<0.9
4	SO4	B	503	5/5	0.62	0.13	82,89,108,112	0
5	EDO	A	607	4/4	0.68	0.14	67,70,72,80	0
4	SO4	A	605	5/5	0.71	0.11	87,97,100,110	0
5	EDO	A	609	4/4	0.77	0.20	57,58,60,69	0
4	SO4	B	501	5/5	0.80	0.09	85,87,102,108	0
4	SO4	B	502	5/5	0.81	0.12	66,70,76,94	0
4	SO4	A	604	5/5	0.84	0.09	76,77,84,85	0
5	EDO	A	606	4/4	0.85	0.13	42,53,54,62	0
6	MG	A	611	1/1	0.87	0.11	62,62,62,62	0
4	SO4	A	602	5/5	0.88	0.08	71,79,83,85	0
4	SO4	A	603	5/5	0.89	0.07	70,72,83,87	0
5	EDO	A	610	4/4	0.90	0.17	51,60,62,69	0
5	EDO	A	608	4/4	0.93	0.10	42,47,48,48	0
5	EDO	B	504	4/4	0.94	0.10	42,44,47,53	0
3	QAG	A	601	32/32	0.96	0.08	39,44,72,81	0

The following is a graphical depiction of the model fit to experimental electron density of all instances of the Ligand of Interest. In addition, ligands with molecular weight > 250 and outliers as shown on the geometry validation Tables will also be included. Each fit is shown from different orientation to approximate a three-dimensional view.



6.5 Other polymers [\(i\)](#)

There are no such residues in this entry.