



Full wwPDB X-ray Structure Validation Report ⓘ

Mar 13, 2026 – 11:55 PM UTC

PDB ID : 6UH4 / pdb_00006uh4
Title : B. theta Bile Salt Hydrolase with covalent inhibitor
Authors : Seegar, T.C.M.
Deposited on : 2019-09-26
Resolution : 3.51 Å(reported)

This is a Full wwPDB X-ray Structure Validation Report for a publicly released PDB entry.

We welcome your comments at validation@mail.wwpdb.org

A user guide is available at

<https://www.wwpdb.org/validation/2017/XrayValidationReportHelp>

with specific help available everywhere you see the ⓘ symbol.

The types of validation reports are described at

<http://www.wwpdb.org/validation/2017/FAQs#types>.

The following versions of software and data (see [references ⓘ](#)) were used in the production of this report:

MolProbity : 4-5-2 with Phenix2.0
Mogul : 2022.3.0, CSD as543be (2022)
Xtriage (Phenix) : 2.0
EDS : 3.0
Buster-report : wwPDB partial adaption of 1.1.7 (2018)
Percentile statistics : 20250101.v01 (using entries in the PDB archive January 1st 2025)
CCP4 : 9.0.010 (Gargrove)
Density-Fitness : 1.0.12
Ideal geometry (proteins) : Engh & Huber (2001)
Ideal geometry (DNA, RNA) : Parkinson et al. (1996)
Validation Pipeline (wwPDB-VP) : 2.49

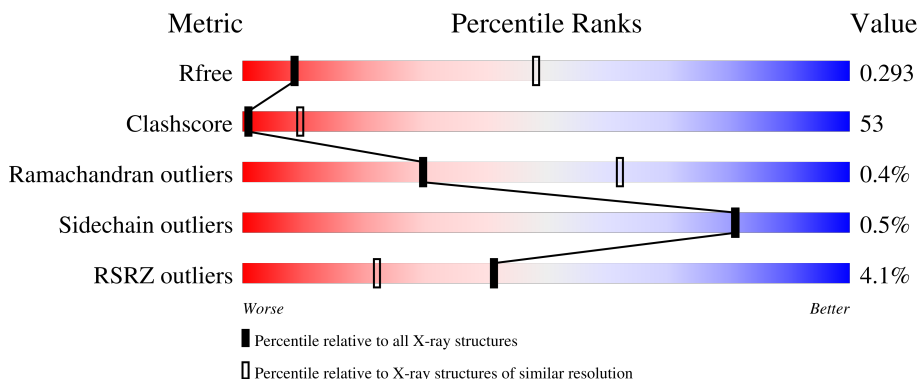
1 Overall quality at a glance

The following experimental techniques were used to determine the structure:

X-RAY DIFFRACTION

The reported resolution of this entry is 3.51 Å.

Percentile scores (ranging between 0-100) for global validation metrics of the entry are shown in the following graphic. The table shows the number of entries on which the scores are based.



Metric	Whole archive (#Entries)	Similar resolution (#Entries, resolution range(Å))
R_{free}	180053	1025 (3.56-3.48)
Clashscore	190562	1079 (3.56-3.48)
Ramachandran outliers	187476	1052 (3.56-3.48)
Sidechain outliers	187428	1053 (3.56-3.48)
RSRZ outliers	180081	1024 (3.56-3.48)

The table below summarises the geometric issues observed across the polymeric chains and their fit to the electron density. The red, orange, yellow and green segments of the lower bar indicate the fraction of residues that contain outliers for ≥ 3 , 2, 1 and 0 types of geometric quality criteria respectively. A grey segment represents the fraction of residues that are not modelled. The numeric value for each fraction is indicated below the corresponding segment, with a dot representing fractions $\leq 5\%$. The upper red bar (where present) indicates the fraction of residues that have poor fit to the electron density. The numeric value is given above the bar.

Mol	Chain	Length	Quality of chain
1	A	336	
1	B	336	
1	C	336	
1	D	336	

2 Entry composition [i](#)

There are 2 unique types of molecules in this entry. The entry contains 10290 atoms, of which 41 are hydrogens and 0 are deuteriums.

In the tables below, the ZeroOcc column contains the number of atoms modelled with zero occupancy, the AltConf column contains the number of residues with at least one atom in alternate conformation and the Trace column contains the number of residues modelled with at most 2 atoms.

- Molecule 1 is a protein called Choloylglycine hydrolase.

Mol	Chain	Residues	Atoms					ZeroOcc	AltConf	Trace
			Total	C	N	O	S			
1	A	329	2597	1653	437	491	16	0	0	0
1	B	326	2574	1637	434	488	15	0	0	0
1	C	319	2525	1608	423	480	14	0	0	0
1	D	319	2525	1608	423	480	14	0	0	0

There are 36 discrepancies between the modelled and reference sequences:

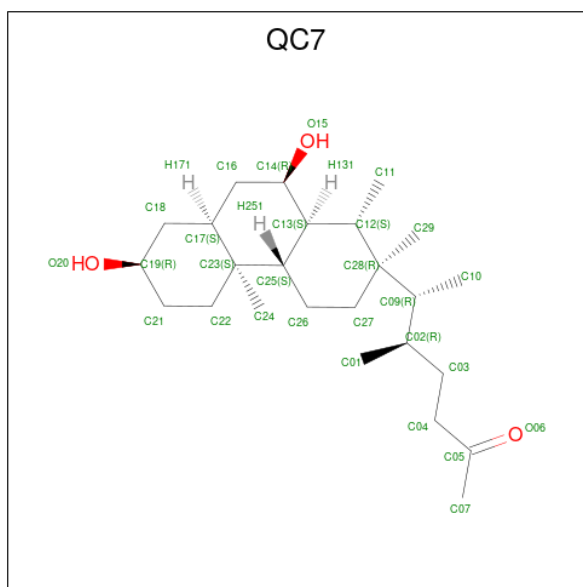
Chain	Residue	Modelled	Actual	Comment	Reference
A	1	MET	-	initiating methionine	UNP A0A0P0ENF5
A	329	LEU	-	expression tag	UNP A0A0P0ENF5
A	330	GLU	-	expression tag	UNP A0A0P0ENF5
A	331	HIS	-	expression tag	UNP A0A0P0ENF5
A	332	HIS	-	expression tag	UNP A0A0P0ENF5
A	333	HIS	-	expression tag	UNP A0A0P0ENF5
A	334	HIS	-	expression tag	UNP A0A0P0ENF5
A	335	HIS	-	expression tag	UNP A0A0P0ENF5
A	336	HIS	-	expression tag	UNP A0A0P0ENF5
B	1	MET	-	initiating methionine	UNP A0A0P0ENF5
B	329	LEU	-	expression tag	UNP A0A0P0ENF5
B	330	GLU	-	expression tag	UNP A0A0P0ENF5
B	331	HIS	-	expression tag	UNP A0A0P0ENF5
B	332	HIS	-	expression tag	UNP A0A0P0ENF5
B	333	HIS	-	expression tag	UNP A0A0P0ENF5
B	334	HIS	-	expression tag	UNP A0A0P0ENF5
B	335	HIS	-	expression tag	UNP A0A0P0ENF5
B	336	HIS	-	expression tag	UNP A0A0P0ENF5
C	1	MET	-	initiating methionine	UNP A0A0P0ENF5
C	329	LEU	-	expression tag	UNP A0A0P0ENF5
C	330	GLU	-	expression tag	UNP A0A0P0ENF5

Continued on next page...

Continued from previous page...

Chain	Residue	Modelled	Actual	Comment	Reference
C	331	HIS	-	expression tag	UNP A0A0P0ENF5
C	332	HIS	-	expression tag	UNP A0A0P0ENF5
C	333	HIS	-	expression tag	UNP A0A0P0ENF5
C	334	HIS	-	expression tag	UNP A0A0P0ENF5
C	335	HIS	-	expression tag	UNP A0A0P0ENF5
C	336	HIS	-	expression tag	UNP A0A0P0ENF5
D	1	MET	-	initiating methionine	UNP A0A0P0ENF5
D	329	LEU	-	expression tag	UNP A0A0P0ENF5
D	330	GLU	-	expression tag	UNP A0A0P0ENF5
D	331	HIS	-	expression tag	UNP A0A0P0ENF5
D	332	HIS	-	expression tag	UNP A0A0P0ENF5
D	333	HIS	-	expression tag	UNP A0A0P0ENF5
D	334	HIS	-	expression tag	UNP A0A0P0ENF5
D	335	HIS	-	expression tag	UNP A0A0P0ENF5
D	336	HIS	-	expression tag	UNP A0A0P0ENF5

- Molecule 2 is (5R,6R)-6-[(1S,2R,4aS,4bS,7R,8aS,10R,10aS)-7,10-dihydroxy-1,2,4b-trimethyltetradecahydrophenanthren-2-yl]-5-methylheptan-2-one (CCD ID: QC7) (formula: C₂₅H₄₄O₃) (labeled as "Ligand of Interest" by depositor).

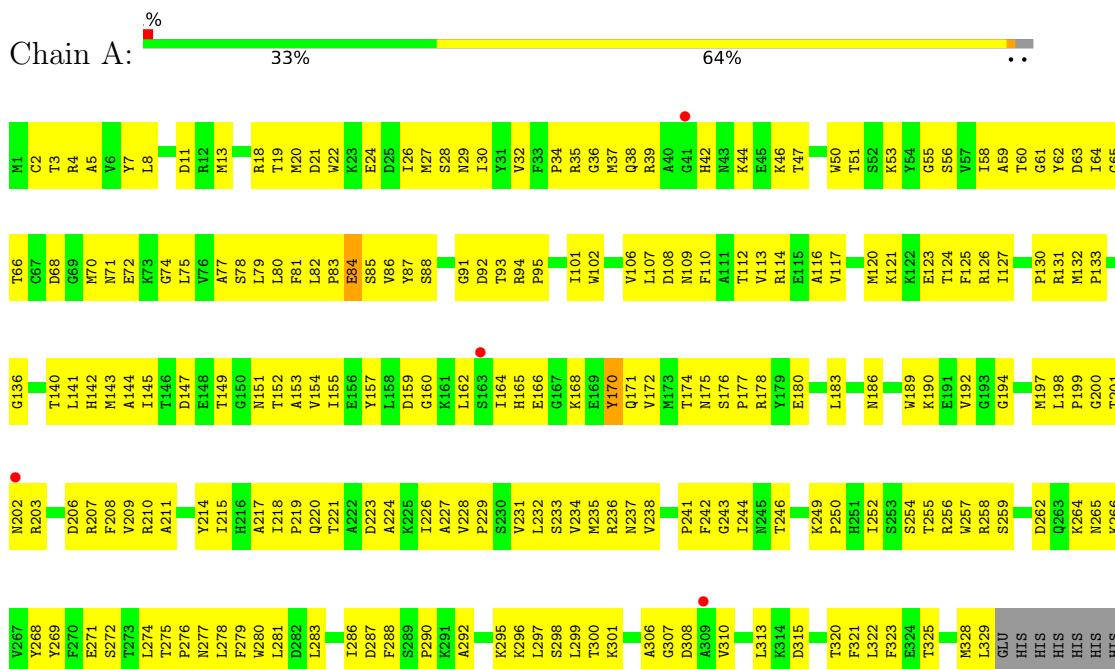


Mol	Chain	Residues	Atoms				ZeroOcc	AltConf
			Total	C	H	O		
2	B	1	69	25	41	3	0	0

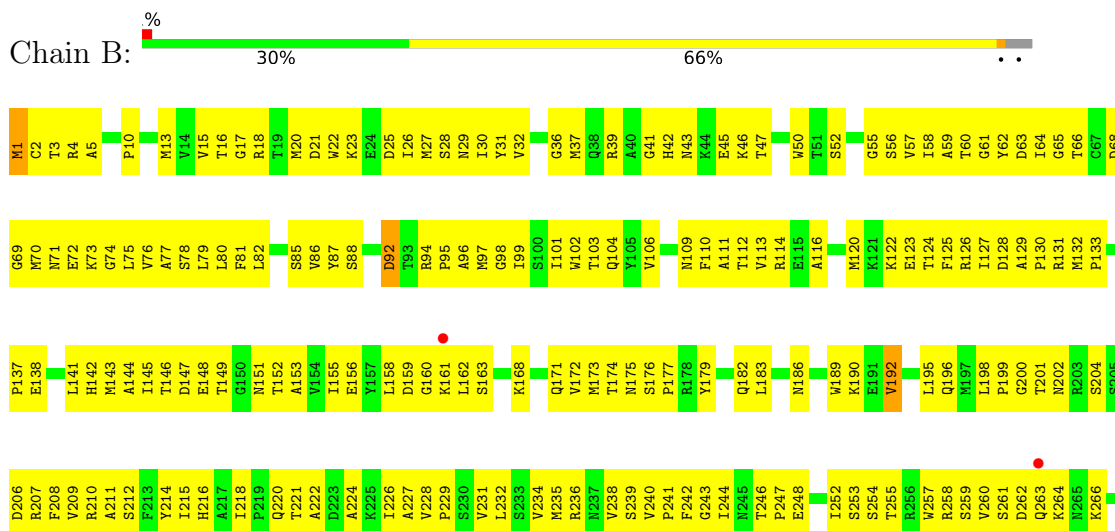
3 Residue-property plots

These plots are drawn for all protein, RNA, DNA and oligosaccharide chains in the entry. The first graphic for a chain summarises the proportions of the various outlier classes displayed in the second graphic. The second graphic shows the sequence view annotated by issues in geometry and electron density. Residues are color-coded according to the number of geometric quality criteria for which they contain at least one outlier: green = 0, yellow = 1, orange = 2 and red = 3 or more. A red dot above a residue indicates a poor fit to the electron density ($RSRZ > 2$). Stretches of 2 or more consecutive residues without any outlier are shown as a green connector. Residues present in the sample, but not in the model, are shown in grey.

• Molecule 1: Cholylglycine hydrolase



• Molecule 1: Cholylglycine hydrolase



4 Data and refinement statistics i

Property	Value	Source
Space group	P 21 21 2	Depositor
Cell constants a, b, c, α , β , γ	98.58Å 99.52Å 162.12Å 90.00° 90.00° 90.00°	Depositor
Resolution (Å)	49.29 – 3.51 49.29 – 3.51	Depositor EDS
% Data completeness (in resolution range)	97.0 (49.29-3.51) 94.7 (49.29-3.51)	Depositor EDS
R_{merge}	(Not available)	Depositor
R_{sym}	(Not available)	Depositor
$\langle I/\sigma(I) \rangle$ ¹	2.62 (at 3.48Å)	Xtrriage
Refinement program	PHENIX 1.16_3549	Depositor
R, R_{free}	0.238 , 0.292 0.243 , 0.293	Depositor DCC
R_{free} test set	1840 reflections (8.96%)	wwPDB-VP
Wilson B-factor (Å ²)	142.4	Xtrriage
Anisotropy	0.563	Xtrriage
Bulk solvent k_{sol} (e/Å ³), B_{sol} (Å ²)	0.33 , 428.6	EDS
L-test for twinning ²	$\langle L \rangle = 0.35$, $\langle L^2 \rangle = 0.18$	Xtrriage
Estimated twinning fraction	0.226 for k,h,-l	Xtrriage
F_o, F_c correlation	0.88	EDS
Total number of atoms	10290	wwPDB-VP
Average B, all atoms (Å ²)	187.0	wwPDB-VP

Xtrriage's analysis on translational NCS is as follows: *The largest off-origin peak in the Patterson function is 5.91% of the height of the origin peak. No significant pseudotranslation is detected.*

¹Intensities estimated from amplitudes.

²Theoretical values of $\langle |L| \rangle$, $\langle L^2 \rangle$ for acentric reflections are 0.5, 0.333 respectively for untwinned datasets, and 0.375, 0.2 for perfectly twinned datasets.

5 Model quality [i](#)

5.1 Standard geometry [i](#)

Bond lengths and bond angles in the following residue types are not validated in this section: QC7

The Z score for a bond length (or angle) is the number of standard deviations the observed value is removed from the expected value. A bond length (or angle) with $|Z| > 5$ is considered an outlier worth inspection. RMSZ is the root-mean-square of all Z scores of the bond lengths (or angles).

Mol	Chain	Bond lengths		Bond angles	
		RMSZ	# Z >5	RMSZ	# Z >5
1	A	0.15	0/2658	0.31	0/3603
1	B	0.17	0/2635	0.35	1/3572 (0.0%)
1	C	0.10	0/2583	0.26	0/3500
1	D	0.09	0/2583	0.25	0/3500
All	All	0.13	0/10459	0.30	1/14175 (0.0%)

There are no bond length outliers.

All (1) bond angle outliers are listed below:

Mol	Chain	Res	Type	Atoms	Z	Observed(°)	Ideal(°)
1	B	192	VAL	N-CA-C	-5.17	106.51	112.98

There are no chirality outliers.

There are no planarity outliers.

5.2 Too-close contacts [i](#)

In the following table, the Non-H and H(model) columns list the number of non-hydrogen atoms and hydrogen atoms in the chain respectively. The H(added) column lists the number of hydrogen atoms added and optimized by MolProbity. The Clashes column lists the number of clashes within the asymmetric unit, whereas Symm-Clashes lists symmetry-related clashes.

Mol	Chain	Non-H	H(model)	H(added)	Clashes	Symm-Clashes
1	A	2597	0	2581	250	2
1	B	2574	0	2551	325	2
1	C	2525	0	2503	247	0
1	D	2525	0	2503	287	0
2	B	28	41	0	2	0
All	All	10249	41	10138	1083	2

The all-atom clashscore is defined as the number of clashes found per 1000 atoms (including hydrogen atoms). The all-atom clashscore for this structure is 53.

All (1083) close contacts within the same asymmetric unit are listed below, sorted by their clash magnitude.

Atom-1	Atom-2	Interatomic distance (Å)	Clash overlap (Å)
1:C:241:PRO:HB2	1:C:244:ILE:HD11	1.29	1.15
1:B:86:VAL:HB	1:B:159:ASP:HA	1.28	1.14
1:B:42:HIS:HB3	1:B:47:THR:HG21	1.29	1.12
1:B:241:PRO:HB2	1:B:244:ILE:HD11	1.23	1.09
1:C:70:MET:HE3	1:C:74:GLY:HA2	1.33	1.07
1:B:94:ARG:HD2	1:B:95:PRO:HD2	1.36	1.07
1:D:130:PRO:HB2	1:D:325:THR:HG23	1.34	1.05
1:B:236:ARG:HG2	1:B:258:ARG:HH22	1.13	1.02
1:D:85:SER:HB3	1:D:140:THR:HB	1.37	1.02
1:D:20:MET:HE2	1:D:26:ILE:HD12	1.38	1.02
1:B:58:ILE:HG22	1:B:69:GLY:HA3	1.45	0.98
1:A:236:ARG:HD3	1:B:236:ARG:HD3	1.42	0.95
1:B:42:HIS:HB3	1:B:47:THR:CG2	1.96	0.95
1:C:42:HIS:H	1:C:47:THR:HG21	1.31	0.94
1:A:120:MET:HE2	1:A:120:MET:HA	1.47	0.93
1:D:77:ALA:HA	1:D:145:ILE:HG13	1.48	0.93
1:A:3:THR:HG23	1:A:174:THR:HG22	1.48	0.92
1:B:70:MET:HE3	1:B:74:GLY:HA2	1.52	0.90
1:C:235:MET:HA	1:C:235:MET:HE2	1.52	0.89
1:A:202:ASN:O	1:A:207:ARG:NH1	2.06	0.89
1:D:151:ASN:HA	1:D:168:LYS:HG2	1.55	0.88
1:C:211:ALA:HB2	1:C:238:VAL:HG11	1.55	0.88
1:B:283:LEU:HA	1:B:286:ILE:HD12	1.55	0.88
1:A:241:PRO:HB2	1:A:244:ILE:HD11	1.55	0.88
1:B:92:ASP:HB3	1:B:126:ARG:HD3	1.53	0.88
1:C:20:MET:HE2	1:C:26:ILE:HD12	1.56	0.88
1:C:30:ILE:HD13	1:C:59:ALA:HA	1.55	0.87
1:C:172:VAL:HG11	1:C:212:SER:HB2	1.57	0.87
1:C:58:ILE:HG22	1:C:69:GLY:HA3	1.54	0.87
1:C:80:LEU:HD22	1:C:173:MET:HE3	1.54	0.87
1:D:241:PRO:HB2	1:D:244:ILE:HD11	1.56	0.87
1:B:198:LEU:HD11	1:B:210:ARG:HG2	1.58	0.86
1:A:131:ARG:O	1:A:325:THR:HG21	1.76	0.86
1:D:20:MET:HE3	1:D:22:TRP:HB2	1.58	0.85
1:C:46:LYS:H	1:C:46:LYS:HD2	1.42	0.85
1:C:117:VAL:HG12	1:C:121:LYS:HE2	1.57	0.85
1:B:71:ASN:HD21	1:B:75:LEU:HB3	1.39	0.85

Continued on next page...

Continued from previous page...

Atom-1	Atom-2	Interatomic distance (Å)	Clash overlap (Å)
1:D:70:MET:HE3	1:D:74:GLY:HA2	1.57	0.84
1:B:130:PRO:HG2	1:B:325:THR:HG22	1.58	0.84
1:D:235:MET:HE2	1:D:235:MET:HA	1.58	0.84
1:A:42:HIS:HB2	1:A:47:THR:HG21	1.59	0.84
1:D:58:ILE:HG22	1:D:69:GLY:HA3	1.60	0.83
1:D:249:LYS:HE2	1:D:252:ILE:HG12	1.61	0.83
1:C:66:THR:HG21	1:C:104:GLN:HB2	1.57	0.83
1:B:228:VAL:HB	1:B:229:PRO:HD3	1.61	0.82
1:A:58:ILE:HD13	1:A:66:THR:HG22	1.62	0.82
1:D:97:MET:O	1:D:128:ASP:N	2.13	0.82
1:D:38:GLN:HA	1:D:51:THR:HA	1.62	0.81
1:B:235:MET:HE2	1:B:235:MET:HA	1.63	0.81
1:A:60:THR:HG21	1:A:63:ASP:HA	1.63	0.81
1:B:80:LEU:HB2	1:B:173:MET:HE3	1.63	0.81
1:B:130:PRO:HG2	1:B:325:THR:CG2	2.11	0.81
1:B:10:PRO:HB2	1:B:222:ALA:HB2	1.62	0.80
1:C:120:MET:HA	1:C:120:MET:HE2	1.63	0.80
1:A:70:MET:HE3	1:A:74:GLY:HA2	1.63	0.80
1:D:103:THR:HA	1:D:143:MET:HE1	1.64	0.79
1:A:192:VAL:HG11	1:A:197:MET:HB3	1.64	0.79
1:B:20:MET:HE2	1:B:26:ILE:HD12	1.65	0.79
1:B:26:ILE:HD13	1:B:257:TRP:HE1	1.47	0.78
1:C:155:ILE:HG12	1:C:164:ILE:HG12	1.64	0.78
1:A:228:VAL:HB	1:A:229:PRO:HD3	1.66	0.78
1:A:271:GLU:HB2	1:A:278:LEU:HD13	1.66	0.78
1:A:130:PRO:HB2	1:A:325:THR:HG22	1.66	0.77
1:A:328:MET:HE3	1:A:329:LEU:H	1.48	0.77
1:D:35:ARG:HH11	1:D:288:PHE:HB2	1.50	0.77
1:B:199:PRO:HB2	1:B:206:ASP:OD1	1.84	0.77
1:B:174:THR:HG22	1:B:175:ASN:H	1.50	0.77
1:A:276:PRO:HB2	1:B:278:LEU:HB3	1.67	0.76
1:B:56:SER:HB3	1:B:71:ASN:HA	1.66	0.76
1:B:236:ARG:HG2	1:B:258:ARG:NH2	1.97	0.76
1:C:95:PRO:HD2	1:C:124:THR:O	1.86	0.76
1:B:79:LEU:HD11	1:B:143:MET:HE2	1.66	0.76
1:B:79:LEU:HD12	1:B:143:MET:HG3	1.67	0.76
1:D:26:ILE:HD13	1:D:257:TRP:HE1	1.50	0.76
1:B:42:HIS:CB	1:B:47:THR:HG21	2.13	0.75
1:B:174:THR:H	1:B:182:GLN:HE22	1.34	0.75
1:D:27:MET:HE2	1:D:300:THR:HG23	1.68	0.75
1:A:70:MET:CE	1:A:74:GLY:HA2	2.17	0.74

Continued on next page...

Continued from previous page...

Atom-1	Atom-2	Interatomic distance (Å)	Clash overlap (Å)
1:D:228:VAL:HB	1:D:229:PRO:HD3	1.69	0.74
1:A:20:MET:HE2	1:A:26:ILE:HD12	1.69	0.74
1:C:114:ARG:HD2	1:C:166:GLU:OE2	1.88	0.74
1:A:75:LEU:HG	1:A:145:ILE:HD11	1.69	0.74
1:B:87:TYR:C	1:B:160:GLY:HA2	2.12	0.74
1:B:74:GLY:HA3	1:B:148:GLU:HB3	1.71	0.73
1:D:113:VAL:HG21	1:D:151:ASN:HB3	1.68	0.73
1:A:283:LEU:HA	1:A:286:ILE:HD12	1.71	0.73
1:A:235:MET:HA	1:A:235:MET:HE2	1.69	0.73
1:D:36:GLY:N	1:D:52:SER:O	2.19	0.73
1:D:71:ASN:ND2	1:D:75:LEU:HB3	2.03	0.73
1:D:151:ASN:CA	1:D:168:LYS:HG2	2.18	0.73
1:D:155:ILE:HG12	1:D:164:ILE:HG12	1.71	0.73
1:C:42:HIS:N	1:C:47:THR:HG21	2.04	0.72
1:C:60:THR:HG21	1:C:63:ASP:HA	1.71	0.72
1:C:325:THR:HB	1:C:326:PRO:HD2	1.71	0.72
1:D:89:LEU:HG	1:D:160:GLY:HA3	1.71	0.72
1:B:87:TYR:HB2	1:B:128:ASP:OD1	1.89	0.72
1:B:45:GLU:O	1:B:47:THR:HG23	1.89	0.72
1:A:117:VAL:HG12	1:A:121:LYS:HE2	1.71	0.72
1:A:59:ALA:HB3	1:A:68:ASP:OD1	1.90	0.72
1:C:80:LEU:O	1:C:142:HIS:N	2.21	0.72
1:C:88:SER:HB2	1:C:92:ASP:CB	2.20	0.72
1:D:71:ASN:HD21	1:D:75:LEU:HB3	1.54	0.72
1:B:73:LYS:HG3	1:B:111:ALA:HB1	1.71	0.72
1:B:71:ASN:ND2	1:B:75:LEU:HB3	2.04	0.71
1:B:18:ARG:HD2	1:B:78:SER:HB3	1.73	0.71
1:D:174:THR:HG21	1:D:208:PHE:HB2	1.71	0.71
1:B:70:MET:CE	1:B:263:GLN:HA	2.20	0.71
1:D:154:VAL:HG11	1:D:179:TYR:CD2	2.26	0.71
1:B:23:LYS:HA	1:B:253:SER:HA	1.73	0.71
1:B:70:MET:HB2	1:B:76:VAL:HG22	1.72	0.71
1:C:151:ASN:HA	1:C:168:LYS:HG2	1.73	0.71
1:C:195:LEU:HA	1:C:213:PHE:CZ	2.26	0.71
1:D:201:THR:HG22	1:D:202:ASN:H	1.55	0.71
1:C:46:LYS:O	1:C:96:ALA:N	2.24	0.70
1:D:64:ILE:HG23	1:D:320:THR:O	1.92	0.70
1:C:98:GLY:HA3	1:C:323:PHE:CD1	2.27	0.70
1:C:282:ASP:HB3	1:C:285:LYS:HE2	1.74	0.70
1:A:192:VAL:CG1	1:A:197:MET:HB3	2.21	0.69
1:B:70:MET:CE	1:B:74:GLY:HA2	2.22	0.69

Continued on next page...

Continued from previous page...

Atom-1	Atom-2	Interatomic distance (Å)	Clash overlap (Å)
1:B:172:VAL:HG13	1:B:208:PHE:CE2	2.27	0.69
1:A:194:GLY:HA2	1:A:198:LEU:HD21	1.74	0.69
1:A:71:ASN:ND2	1:A:110:PHE:O	2.25	0.69
1:A:276:PRO:HB3	1:B:278:LEU:HD23	1.74	0.69
1:C:35:ARG:CZ	1:C:290:PRO:HD3	2.22	0.69
1:A:64:ILE:O	1:A:321:PHE:HA	1.92	0.69
1:B:325:THR:N	1:B:326:PRO:HD3	2.07	0.69
1:A:126:ARG:HG2	1:A:127:ILE:H	1.57	0.69
1:D:271:GLU:HB2	1:D:278:LEU:HD13	1.74	0.69
1:A:231:VAL:O	1:A:234:VAL:HG22	1.91	0.69
1:B:110:PHE:CE1	1:B:116:ALA:HA	2.28	0.69
1:A:132:MET:SD	1:A:136:GLY:HA3	2.32	0.69
1:B:1:MET:HB3	1:B:175:ASN:OD1	1.93	0.69
1:B:64:ILE:O	1:B:321:PHE:HA	1.92	0.69
1:B:76:VAL:HG21	1:B:261:SER:HB2	1.74	0.69
1:B:174:THR:HG21	1:B:204:SER:O	1.93	0.68
1:B:239:SER:OG	1:B:255:THR:HG21	1.93	0.68
1:D:155:ILE:HG12	1:D:164:ILE:HG23	1.74	0.68
1:D:152:THR:HB	1:D:170:TYR:O	1.93	0.68
1:A:71:ASN:OD1	1:A:75:LEU:HB3	1.93	0.68
1:A:232:LEU:HD12	1:A:235:MET:HB2	1.75	0.68
1:B:246:THR:HB	1:B:247:PRO:HD2	1.74	0.68
1:B:98:GLY:HA3	1:B:323:PHE:CD1	2.28	0.68
1:D:296:LYS:HB3	1:D:316:SER:HB3	1.74	0.68
1:C:95:PRO:HB2	1:C:125:PHE:HB3	1.75	0.68
1:A:174:THR:HG23	1:A:208:PHE:HD1	1.59	0.67
1:D:98:GLY:HA3	1:D:323:PHE:CD1	2.29	0.67
1:D:156:GLU:O	1:D:163:SER:HB3	1.93	0.67
1:A:80:LEU:O	1:A:141:LEU:HB3	1.94	0.67
1:C:41:GLY:HA2	1:C:101:ILE:HG21	1.76	0.67
1:B:70:MET:CE	1:B:266:LYS:HA	2.24	0.67
1:D:98:GLY:HA3	1:D:323:PHE:HD1	1.59	0.67
1:B:324:GLU:C	1:B:326:PRO:HD3	2.20	0.67
1:C:42:HIS:CD2	1:C:45:GLU:HB2	2.30	0.67
1:D:110:PHE:CE1	1:D:116:ALA:HA	2.30	0.67
1:A:201:THR:CG2	1:A:203:ARG:HG3	2.25	0.67
1:D:39:ARG:NH1	1:D:52:SER:OG	2.28	0.66
1:B:156:GLU:O	1:B:163:SER:N	2.27	0.66
1:A:38:GLN:HA	1:A:50:TRP:O	1.94	0.66
1:A:86:VAL:HB	1:A:159:ASP:HA	1.77	0.66
1:A:203:ARG:HH21	1:B:196:GLN:HA	1.60	0.66

Continued on next page...

Continued from previous page...

Atom-1	Atom-2	Interatomic distance (Å)	Clash overlap (Å)
1:B:70:MET:HE1	1:B:266:LYS:HA	1.76	0.66
1:D:155:ILE:HG23	1:D:164:ILE:HG12	1.77	0.66
1:A:249:LYS:HE2	1:A:252:ILE:HG12	1.77	0.66
1:B:92:ASP:CB	1:B:126:ARG:HD3	2.23	0.66
1:C:2:CYS:SG	1:C:20:MET:HA	2.36	0.66
1:C:15:VAL:HG22	1:C:262:ASP:HA	1.77	0.66
1:D:20:MET:CE	1:D:22:TRP:HB2	2.26	0.66
1:A:296:LYS:HE2	1:A:298:SER:HB2	1.77	0.66
1:D:169:GLU:O	1:D:171:GLN:HG3	1.94	0.66
1:D:7:TYR:HB2	1:D:215:ILE:HD11	1.77	0.66
1:C:64:ILE:O	1:C:321:PHE:HA	1.96	0.66
1:C:82:LEU:HB2	1:C:142:HIS:CD2	2.31	0.66
1:A:35:ARG:O	1:A:290:PRO:HA	1.96	0.66
1:D:117:VAL:HG11	1:D:166:GLU:OE1	1.96	0.66
1:D:189:TRP:CD1	1:D:209:VAL:HG21	2.32	0.65
1:A:35:ARG:HG2	1:A:288:PHE:O	1.95	0.65
1:A:82:LEU:HD22	1:A:142:HIS:HD2	1.61	0.65
1:C:13:MET:HG2	1:C:222:ALA:HA	1.78	0.65
1:C:70:MET:HB2	1:C:76:VAL:HG22	1.78	0.65
1:C:232:LEU:HG	1:C:236:ARG:HE	1.62	0.65
1:A:227:ALA:O	1:A:231:VAL:HG23	1.95	0.65
1:B:56:SER:CB	1:B:71:ASN:HA	2.26	0.65
1:D:308:ASP:OD1	1:D:310:VAL:HG23	1.97	0.65
1:B:66:THR:OG1	1:B:103:THR:HB	1.97	0.65
1:B:189:TRP:O	1:B:192:VAL:HG12	1.97	0.65
1:B:10:PRO:HD2	1:B:221:THR:C	2.21	0.65
1:B:97:MET:O	1:B:127:ILE:HA	1.96	0.65
1:A:203:ARG:HB2	1:A:206:ASP:OD1	1.96	0.65
1:B:20:MET:HE3	1:B:22:TRP:HB2	1.78	0.65
1:B:98:GLY:HA3	1:B:323:PHE:CE1	2.32	0.65
1:C:86:VAL:O	1:C:157:TYR:HB3	1.96	0.65
1:C:231:VAL:O	1:C:235:MET:HG2	1.96	0.65
1:D:30:ILE:HD13	1:D:59:ALA:HA	1.78	0.64
1:D:81:PHE:HA	1:D:141:LEU:HG	1.77	0.64
1:C:95:PRO:HB2	1:C:125:PHE:CB	2.26	0.64
1:C:94:ARG:NH1	1:C:123:GLU:HB3	2.13	0.64
1:D:53:LYS:N	1:D:108:ASP:O	2.28	0.64
1:D:255:THR:HG23	1:D:273:THR:HG21	1.79	0.64
1:C:129:ALA:HB1	1:C:139:SER:HB2	1.79	0.64
1:A:211:ALA:HB2	1:A:238:VAL:HG11	1.77	0.64
1:B:2:CYS:H	1:B:175:ASN:HD21	1.45	0.64

Continued on next page...

Continued from previous page...

Atom-1	Atom-2	Interatomic distance (Å)	Clash overlap (Å)
1:B:236:ARG:CG	1:B:258:ARG:HH22	2.01	0.64
1:D:172:VAL:HG13	1:D:208:PHE:CE1	2.32	0.64
1:C:5:ALA:HA	1:C:171:GLN:O	1.98	0.64
1:C:34:PRO:HB3	1:C:289:SER:O	1.97	0.64
1:A:283:LEU:HA	1:A:286:ILE:CD1	2.27	0.64
1:B:37:MET:H	1:B:52:SER:HB3	1.63	0.64
1:A:130:PRO:HB2	1:A:325:THR:CG2	2.27	0.63
1:B:94:ARG:CD	1:B:95:PRO:HD2	2.21	0.63
1:C:7:TYR:OH	1:C:220:GLN:HA	1.98	0.63
1:D:204:SER:HA	1:D:207:ARG:NH2	2.13	0.63
1:A:113:VAL:O	1:A:117:VAL:HG23	1.99	0.63
1:A:120:MET:HA	1:A:120:MET:CE	2.26	0.63
1:C:280:TRP:CZ3	1:C:307:GLY:HA2	2.32	0.63
1:B:70:MET:HE1	1:B:263:GLN:HA	1.79	0.63
1:A:197:MET:HA	1:B:201:THR:CG2	2.28	0.63
1:D:82:LEU:HB2	1:D:142:HIS:CD2	2.33	0.63
1:D:244:ILE:HG22	1:D:252:ILE:HD12	1.80	0.63
1:D:70:MET:HE1	1:D:266:LYS:HA	1.81	0.63
1:B:61:GLY:O	1:B:64:ILE:HG12	1.98	0.63
1:B:186:ASN:OD1	1:B:190:LYS:HG3	1.99	0.63
1:B:296:LYS:CB	1:B:316:SER:HB2	2.28	0.63
1:B:20:MET:HG2	1:B:257:TRP:NE1	2.13	0.63
1:A:94:ARG:HH11	1:A:123:GLU:HG2	1.64	0.62
1:D:20:MET:HE2	1:D:26:ILE:CD1	2.23	0.62
1:B:70:MET:SD	1:B:261:SER:HB3	2.39	0.62
1:D:18:ARG:HB3	1:D:259:SER:OG	1.98	0.62
1:A:211:ALA:O	1:A:215:ILE:HG22	1.99	0.62
1:A:75:LEU:CD2	1:A:145:ILE:HD11	2.29	0.62
1:A:221:THR:HG21	1:A:226:ILE:HD13	1.82	0.62
1:A:75:LEU:CG	1:A:145:ILE:HD11	2.30	0.62
1:A:272:SER:HB2	1:A:275:THR:HG23	1.81	0.62
1:D:46:LYS:O	1:D:95:PRO:HA	1.99	0.62
1:D:70:MET:CE	1:D:266:LYS:HA	2.30	0.62
1:B:39:ARG:HB2	1:B:50:TRP:CZ2	2.34	0.62
1:B:94:ARG:HD2	1:B:95:PRO:CD	2.24	0.62
1:A:131:ARG:N	1:A:325:THR:CG2	2.62	0.62
1:B:324:GLU:CB	1:B:326:PRO:HD3	2.30	0.62
1:A:94:ARG:NH1	1:A:123:GLU:HG2	2.15	0.61
1:B:242:PHE:HA	1:B:254:SER:HB3	1.82	0.61
1:C:95:PRO:O	1:C:125:PHE:HB2	2.00	0.61
1:C:71:ASN:ND2	1:C:110:PHE:O	2.32	0.61

Continued on next page...

Continued from previous page...

Atom-1	Atom-2	Interatomic distance (Å)	Clash overlap (Å)
1:A:308:ASP:OD1	1:A:310:VAL:HG23	1.99	0.61
1:A:58:ILE:HD12	1:A:58:ILE:O	2.00	0.61
1:A:102:TRP:O	1:A:106:VAL:HG23	2.00	0.61
1:D:199:PRO:O	1:D:210:ARG:HD2	2.00	0.61
1:C:175:ASN:HB3	1:C:204:SER:OG	2.00	0.61
1:D:26:ILE:CG2	1:D:256:ARG:HG2	2.31	0.61
1:A:11:ASP:O	1:A:264:LYS:HE2	2.00	0.61
1:A:29:ASN:HB2	1:A:63:ASP:OD1	2.01	0.61
1:B:82:LEU:HD22	1:B:156:GLU:OE1	2.01	0.61
1:B:143:MET:SD	1:B:145:ILE:HD11	2.41	0.61
1:D:262:ASP:OD2	1:D:265:ASN:HB2	2.01	0.61
1:B:18:ARG:HD2	1:B:78:SER:CB	2.31	0.61
1:B:123:GLU:OE2	1:B:162:LEU:HD22	2.00	0.61
1:C:53:LYS:N	1:C:108:ASP:O	2.34	0.61
1:C:113:VAL:O	1:C:117:VAL:HG23	2.00	0.61
1:A:328:MET:HE3	1:A:329:LEU:HG	1.83	0.61
1:D:56:SER:CB	1:D:71:ASN:HA	2.31	0.61
1:D:82:LEU:N	1:D:141:LEU:HA	2.16	0.61
1:B:179:TYR:HA	1:B:182:GLN:HB3	1.80	0.60
1:B:202:ASN:OD1	1:B:240:VAL:HG11	2.01	0.60
1:C:66:THR:OG1	1:C:103:THR:HB	2.00	0.60
1:A:199:PRO:HB2	1:A:206:ASP:OD2	2.00	0.60
1:D:241:PRO:O	1:D:244:ILE:HG12	2.01	0.60
1:B:234:VAL:O	1:B:238:VAL:HG22	2.01	0.60
1:C:88:SER:HB2	1:C:92:ASP:HB3	1.82	0.60
1:D:4:ARG:HD2	1:D:78:SER:HB2	1.82	0.60
1:D:27:MET:HB2	1:D:62:TYR:CE1	2.35	0.60
1:A:198:LEU:O	1:B:200:GLY:N	2.32	0.60
1:C:46:LYS:O	1:C:95:PRO:HA	2.01	0.60
1:C:8:LEU:HD23	1:C:14:VAL:HG13	1.84	0.60
1:B:81:PHE:CZ	1:B:138:GLU:HB3	2.36	0.60
1:A:20:MET:HE3	1:A:22:TRP:HB2	1.83	0.60
1:A:234:VAL:HG23	1:A:235:MET:HE3	1.83	0.60
1:B:113:VAL:HG21	1:B:151:ASN:O	2.01	0.60
1:C:272:SER:HB2	1:C:275:THR:HG23	1.84	0.60
1:B:50:TRP:CG	1:B:109:ASN:HD21	2.19	0.60
1:D:32:VAL:HG22	1:D:57:VAL:HG22	1.84	0.60
1:D:187:ASP:HA	1:D:190:LYS:NZ	2.17	0.60
1:A:110:PHE:CE1	1:A:116:ALA:HA	2.37	0.59
1:A:88:SER:OG	1:A:126:ARG:HD2	2.02	0.59
1:A:234:VAL:O	1:A:238:VAL:HG22	2.02	0.59

Continued on next page...

Continued from previous page...

Atom-1	Atom-2	Interatomic distance (Å)	Clash overlap (Å)
1:A:277:ASN:OD1	1:B:277:ASN:HB3	2.01	0.59
1:B:47:THR:HA	1:B:95:PRO:HB2	1.83	0.59
1:B:151:ASN:HA	1:B:168:LYS:HG2	1.83	0.59
1:D:52:SER:CB	1:D:108:ASP:HB2	2.32	0.59
1:A:20:MET:HG2	1:A:257:TRP:NE1	2.16	0.59
1:D:70:MET:HE3	1:D:74:GLY:CA	2.31	0.59
1:C:41:GLY:HA2	1:C:101:ILE:CG2	2.32	0.59
1:D:3:THR:HG23	1:D:174:THR:HG22	1.84	0.59
1:A:53:LYS:HB2	1:A:108:ASP:O	2.01	0.59
1:C:326:PRO:HA	1:D:324:GLU:HB2	1.83	0.59
1:D:113:VAL:HG21	1:D:151:ASN:CB	2.30	0.59
1:D:145:ILE:O	1:D:152:THR:HG23	2.03	0.59
1:D:283:LEU:HA	1:D:286:ILE:HD12	1.84	0.59
1:A:7:TYR:OH	1:A:220:GLN:HA	2.02	0.59
1:C:112:THR:HG22	1:C:115:GLU:CD	2.28	0.59
1:D:154:VAL:HG21	1:D:179:TYR:CE2	2.38	0.59
1:A:92:ASP:CG	1:A:126:ARG:HD3	2.27	0.59
1:C:1:MET:SD	1:C:1:MET:N	2.74	0.59
1:D:158:LEU:HD12	1:D:158:LEU:O	2.02	0.59
1:D:256:ARG:HH12	1:D:274:LEU:HD12	1.68	0.59
1:B:144:ALA:C	1:B:145:ILE:HD12	2.28	0.59
1:B:144:ALA:HB2	1:B:173:MET:SD	2.41	0.59
1:C:68:ASP:OD1	1:C:69:GLY:N	2.36	0.59
1:B:42:HIS:HA	1:B:323:PHE:CE2	2.37	0.58
1:D:95:PRO:HD2	1:D:125:PHE:HA	1.85	0.58
1:B:68:ASP:OD1	1:B:69:GLY:N	2.36	0.58
1:C:21:ASP:OD2	1:C:240:VAL:HG22	2.03	0.58
1:C:231:VAL:O	1:C:234:VAL:HG22	2.03	0.58
1:C:20:MET:HG2	1:C:257:TRP:NE1	2.18	0.58
1:A:214:TYR:CD2	1:B:241:PRO:HG2	2.38	0.58
1:B:21:ASP:OD1	1:B:255:THR:HA	2.03	0.58
1:C:112:THR:HG22	1:C:115:GLU:HG3	1.85	0.58
1:D:1:MET:HB2	1:D:175:ASN:ND2	2.19	0.58
1:D:176:SER:HB2	1:D:177:PRO:HA	1.86	0.58
1:D:35:ARG:O	1:D:290:PRO:HA	2.04	0.58
1:D:47:THR:HG22	1:D:48:VAL:H	1.68	0.58
1:B:214:TYR:O	1:B:218:ILE:HG23	2.04	0.58
1:D:241:PRO:HB2	1:D:244:ILE:CD1	2.32	0.58
1:C:60:THR:CG2	1:C:63:ASP:HA	2.33	0.58
1:C:176:SER:HB2	1:C:177:PRO:HA	1.85	0.58
1:A:22:TRP:NE1	1:A:24:GLU:HG2	2.19	0.57

Continued on next page...

Continued from previous page...

Atom-1	Atom-2	Interatomic distance (Å)	Clash overlap (Å)
1:A:85:SER:HB2	1:A:140:THR:HB	1.85	0.57
1:A:198:LEU:HD13	1:A:214:TYR:HE1	1.68	0.57
1:A:214:TYR:O	1:A:218:ILE:HG23	2.04	0.57
1:B:247:PRO:HG2	1:B:248:GLU:OE2	2.04	0.57
1:C:113:VAL:HG23	1:C:147:ASP:OD2	2.03	0.57
1:C:117:VAL:O	1:C:121:LYS:HG3	2.04	0.57
1:B:42:HIS:HA	1:B:323:PHE:CD2	2.40	0.57
1:B:82:LEU:HB2	1:B:142:HIS:ND1	2.20	0.57
1:B:99:ILE:HG22	1:B:129:ALA:HB2	1.84	0.57
1:D:113:VAL:HG21	1:D:151:ASN:CG	2.29	0.57
1:A:269:TYR:CD2	1:A:280:TRP:HB3	2.39	0.57
1:C:18:ARG:HD3	1:C:68:ASP:OD2	2.05	0.57
1:A:176:SER:HB2	1:A:177:PRO:HA	1.86	0.57
1:A:199:PRO:O	1:A:206:ASP:HB3	2.05	0.57
1:B:77:ALA:HA	1:B:145:ILE:HG13	1.86	0.57
1:B:158:LEU:N	1:B:161:LYS:O	2.35	0.57
1:D:130:PRO:HB2	1:D:325:THR:CG2	2.22	0.57
1:A:241:PRO:HB2	1:A:244:ILE:CD1	2.33	0.57
1:B:16:THR:O	1:B:260:VAL:HA	2.04	0.57
1:B:70:MET:CB	1:B:76:VAL:HG22	2.34	0.57
1:C:179:TYR:O	1:C:183:LEU:HG	2.04	0.57
1:B:266:LYS:HE2	1:B:284:LYS:HG2	1.86	0.57
1:B:276:PRO:HG2	1:B:277:ASN:ND2	2.20	0.57
1:C:7:TYR:O	1:C:14:VAL:HA	2.04	0.57
1:C:204:SER:HA	1:C:207:ARG:CZ	2.34	0.57
1:D:26:ILE:HG22	1:D:256:ARG:HG2	1.84	0.57
1:A:271:GLU:HB2	1:A:278:LEU:CD1	2.34	0.57
1:B:79:LEU:HD23	1:B:141:LEU:HD11	1.86	0.57
1:B:81:PHE:HZ	1:B:138:GLU:HB3	1.69	0.57
1:D:2:CYS:N	1:D:175:ASN:HD21	2.03	0.57
1:D:41:GLY:C	1:D:47:THR:HG21	2.29	0.57
1:D:77:ALA:H	1:D:107:LEU:HD21	1.68	0.57
1:A:79:LEU:HD13	1:A:143:MET:HE2	1.87	0.57
1:B:13:MET:HA	1:B:264:LYS:HD2	1.85	0.57
1:D:26:ILE:O	1:D:62:TYR:HD1	1.86	0.57
1:D:97:MET:O	1:D:127:ILE:HA	2.05	0.57
1:A:124:THR:HG23	1:A:125:PHE:HD2	1.70	0.57
1:D:76:VAL:HG23	1:D:263:GLN:HE21	1.69	0.57
1:A:276:PRO:CB	1:B:278:LEU:HD23	2.33	0.56
1:C:155:ILE:HA	1:C:163:SER:O	2.05	0.56
1:D:95:PRO:HD2	1:D:124:THR:O	2.04	0.56

Continued on next page...

Continued from previous page...

Atom-1	Atom-2	Interatomic distance (Å)	Clash overlap (Å)
1:D:189:TRP:CG	1:D:209:VAL:HG11	2.39	0.56
1:A:201:THR:HB	1:A:206:ASP:OD2	2.05	0.56
1:B:176:SER:HB2	1:B:177:PRO:HA	1.88	0.56
1:C:15:VAL:HG13	1:C:261:SER:O	2.05	0.56
1:D:50:TRP:CD1	1:D:109:ASN:HD21	2.23	0.56
1:D:70:MET:SD	1:D:261:SER:HB3	2.45	0.56
1:A:2:CYS:SG	1:A:20:MET:HA	2.46	0.56
1:B:215:ILE:HD12	1:B:218:ILE:HD13	1.86	0.56
1:B:282:ASP:O	1:B:286:ILE:HG13	2.05	0.56
1:C:195:LEU:HD13	1:C:213:PHE:HZ	1.70	0.56
1:D:70:MET:CE	1:D:74:GLY:HA2	2.31	0.56
1:D:174:THR:HG23	1:D:208:PHE:HD1	1.71	0.56
1:B:95:PRO:O	1:B:125:PHE:HB2	2.06	0.56
1:B:296:LYS:HB3	1:B:316:SER:HB2	1.87	0.56
1:A:5:ALA:HA	1:A:171:GLN:O	2.06	0.56
1:B:174:THR:H	1:B:182:GLN:NE2	2.03	0.56
1:C:35:ARG:NH2	1:C:289:SER:HA	2.21	0.56
1:C:144:ALA:C	1:C:145:ILE:HD12	2.31	0.56
1:C:255:THR:C	1:C:256:ARG:HD2	2.31	0.56
1:C:280:TRP:O	1:C:281:LEU:HD23	2.05	0.56
1:D:96:ALA:HB2	1:D:126:ARG:CZ	2.36	0.56
1:D:146:THR:HG23	1:D:263:GLN:HE22	1.70	0.56
1:A:197:MET:HA	1:B:201:THR:HG22	1.88	0.56
1:D:296:LYS:HB3	1:D:316:SER:CB	2.36	0.56
1:A:243:GLY:H	1:A:254:SER:CB	2.19	0.56
1:C:96:ALA:HB2	1:C:126:ARG:CZ	2.36	0.56
1:C:112:THR:CG2	1:C:115:GLU:HG3	2.36	0.56
1:D:26:ILE:HG22	1:D:256:ARG:HE	1.71	0.56
1:D:77:ALA:HB1	1:D:143:MET:SD	2.46	0.56
1:D:80:LEU:O	1:D:141:LEU:HB3	2.05	0.56
1:C:272:SER:HB2	1:C:275:THR:CG2	2.36	0.55
1:A:34:PRO:CG	1:A:292:ALA:HB3	2.36	0.55
1:B:25:ASP:OD2	1:B:27:MET:HG2	2.06	0.55
1:B:202:ASN:OD1	1:B:207:ARG:NE	2.32	0.55
1:B:211:ALA:O	1:B:215:ILE:HG22	2.07	0.55
1:A:20:MET:CE	1:A:22:TRP:HB2	2.37	0.55
1:A:32:VAL:N	1:A:295:LYS:O	2.36	0.55
1:B:280:TRP:CZ3	1:B:307:GLY:HA2	2.42	0.55
1:D:74:GLY:O	1:D:263:GLN:HG2	2.07	0.55
1:D:76:VAL:CG2	1:D:263:GLN:HE21	2.19	0.55
1:D:113:VAL:O	1:D:117:VAL:HG23	2.06	0.55

Continued on next page...

Continued from previous page...

Atom-1	Atom-2	Interatomic distance (Å)	Clash overlap (Å)
1:A:30:ILE:HB	1:A:297:LEU:HB3	1.88	0.55
1:A:297:LEU:HB2	1:A:313:LEU:CD2	2.37	0.55
1:B:30:ILE:HD13	1:B:59:ALA:HA	1.89	0.55
1:C:13:MET:CB	1:C:222:ALA:HA	2.37	0.55
1:D:76:VAL:O	1:D:145:ILE:HG23	2.06	0.55
1:A:194:GLY:HA2	1:A:198:LEU:CD2	2.36	0.55
1:B:235:MET:HA	1:B:238:VAL:HG22	1.89	0.55
1:D:245:ASN:HB2	1:D:250:PRO:O	2.06	0.55
1:A:55:GLY:O	1:A:72:GLU:HG3	2.06	0.55
1:C:80:LEU:O	1:C:141:LEU:HB3	2.07	0.55
1:B:97:MET:SD	1:B:127:ILE:HD12	2.46	0.55
1:D:58:ILE:HA	1:D:69:GLY:CA	2.37	0.55
1:A:60:THR:CG2	1:A:63:ASP:HA	2.35	0.55
1:B:73:LYS:CG	1:B:111:ALA:HB1	2.36	0.55
1:B:76:VAL:HG21	1:B:261:SER:CB	2.36	0.55
1:B:227:ALA:O	1:B:231:VAL:HG23	2.07	0.55
1:C:2:CYS:HB3	1:C:19:THR:O	2.07	0.55
1:C:10:PRO:HD3	1:C:220:GLN:HG2	1.88	0.55
1:C:87:TYR:CD1	1:C:127:ILE:HB	2.42	0.55
1:D:227:ALA:O	1:D:231:VAL:HG23	2.06	0.55
1:A:84:GLU:H	1:A:84:GLU:CD	2.15	0.54
1:C:18:ARG:HD2	1:C:78:SER:HB3	1.88	0.54
1:D:54:TYR:HB3	1:D:72:GLU:HG3	1.89	0.54
1:D:58:ILE:HA	1:D:69:GLY:HA2	1.89	0.54
1:B:81:PHE:HA	1:B:141:LEU:HA	1.89	0.54
1:B:189:TRP:HE3	1:B:192:VAL:HG11	1.72	0.54
1:C:120:MET:HE2	1:C:120:MET:CA	2.34	0.54
1:A:56:SER:HB2	1:A:70:MET:O	2.08	0.54
1:A:126:ARG:HG2	1:A:127:ILE:N	2.20	0.54
1:B:69:GLY:O	1:B:76:VAL:HG13	2.07	0.54
1:D:18:ARG:HD2	1:D:78:SER:HB3	1.89	0.54
1:A:61:GLY:O	1:A:64:ILE:HG12	2.07	0.54
1:A:214:TYR:HD2	1:B:241:PRO:HG2	1.72	0.54
1:B:324:GLU:HB3	1:B:326:PRO:HD3	1.88	0.54
1:C:204:SER:HA	1:C:207:ARG:NH2	2.23	0.54
1:A:224:ALA:O	1:A:228:VAL:HG23	2.07	0.54
1:B:47:THR:HG22	1:B:96:ALA:O	2.07	0.54
1:C:249:LYS:HB3	1:C:252:ILE:HD11	1.89	0.54
1:A:24:GLU:O	1:A:256:ARG:NH1	2.40	0.54
1:B:102:TRP:HB2	1:B:127:ILE:HD13	1.89	0.54
1:B:189:TRP:CD1	1:B:209:VAL:HG21	2.42	0.54

Continued on next page...

Continued from previous page...

Atom-1	Atom-2	Interatomic distance (Å)	Clash overlap (Å)
1:C:5:ALA:O	1:C:16:THR:HG23	2.07	0.54
1:C:249:LYS:HG3	1:C:252:ILE:CG1	2.38	0.54
1:B:73:LYS:CB	1:B:111:ALA:HB1	2.37	0.54
1:B:198:LEU:HD11	1:B:210:ARG:CG	2.32	0.54
1:C:14:VAL:HG11	1:C:150:GLY:HA2	1.89	0.54
1:D:4:ARG:HD3	1:D:144:ALA:HB3	1.89	0.54
1:A:75:LEU:CD2	1:A:107:LEU:HD23	2.38	0.54
1:B:5:ALA:N	1:B:17:GLY:O	2.36	0.54
1:C:1:MET:O	1:C:21:ASP:HB2	2.08	0.54
1:C:157:TYR:HA	1:C:161:LYS:O	2.08	0.54
1:D:41:GLY:CA	1:D:47:THR:HG21	2.38	0.54
1:D:174:THR:CG2	1:D:208:PHE:HB2	2.37	0.54
1:D:203:ARG:HB2	1:D:206:ASP:OD1	2.08	0.54
1:A:124:THR:HG23	1:A:125:PHE:CD2	2.43	0.53
1:B:72:GLU:OE2	1:B:288:PHE:HB2	2.07	0.53
1:A:132:MET:HE2	1:A:136:GLY:HA3	1.89	0.53
1:B:215:ILE:HD12	1:B:218:ILE:CD1	2.37	0.53
1:C:179:TYR:CE2	1:C:183:LEU:HD11	2.43	0.53
1:B:25:ASP:O	1:B:62:TYR:OH	2.26	0.53
1:B:102:TRP:CG	1:B:127:ILE:HD13	2.43	0.53
1:C:35:ARG:NH1	1:C:290:PRO:HD3	2.23	0.53
1:D:81:PHE:HA	1:D:141:LEU:CG	2.38	0.53
1:B:82:LEU:HD23	1:B:85:SER:OG	2.08	0.53
1:B:296:LYS:HB2	1:B:316:SER:HB2	1.89	0.53
1:C:42:HIS:CE1	1:C:44:LYS:HB2	2.43	0.53
1:B:231:VAL:O	1:B:235:MET:HG2	2.08	0.53
1:A:30:ILE:HD13	1:A:59:ALA:HA	1.91	0.53
1:A:42:HIS:NE2	1:A:323:PHE:HB3	2.23	0.53
1:A:201:THR:HG22	1:A:203:ARG:HG3	1.89	0.53
1:B:258:ARG:NH1	1:B:271:GLU:OE2	2.35	0.53
1:C:1:MET:HB3	1:C:175:ASN:HB2	1.91	0.53
1:C:232:LEU:CD2	1:C:236:ARG:HH21	2.21	0.53
1:D:56:SER:HB3	1:D:71:ASN:HA	1.91	0.53
1:D:75:LEU:CD2	1:D:107:LEU:HD23	2.38	0.53
1:D:80:LEU:O	1:D:142:HIS:N	2.40	0.53
1:A:79:LEU:HD12	1:A:142:HIS:O	2.08	0.53
1:A:92:ASP:HB3	1:A:126:ARG:HD3	1.90	0.53
1:A:186:ASN:O	1:A:190:LYS:HG2	2.07	0.53
1:B:73:LYS:HG3	1:B:111:ALA:CB	2.37	0.53
1:D:298:SER:O	1:D:299:LEU:HD23	2.08	0.53
1:A:79:LEU:HD13	1:A:143:MET:CE	2.39	0.53

Continued on next page...

Continued from previous page...

Atom-1	Atom-2	Interatomic distance (Å)	Clash overlap (Å)
1:B:189:TRP:HD1	1:B:209:VAL:HG21	1.73	0.53
1:D:113:VAL:HG11	1:D:151:ASN:O	2.09	0.53
1:A:142:HIS:HB2	1:A:155:ILE:O	2.09	0.53
1:A:201:THR:HG21	1:A:203:ARG:HG3	1.89	0.53
1:B:102:TRP:HB2	1:B:127:ILE:CD1	2.38	0.53
1:B:143:MET:HG2	1:B:145:ILE:HD11	1.91	0.53
1:B:298:SER:O	1:B:299:LEU:HD23	2.09	0.53
1:C:86:VAL:HB	1:C:159:ASP:CA	2.39	0.53
1:C:96:ALA:HB2	1:C:126:ARG:NH2	2.23	0.53
1:D:249:LYS:CE	1:D:252:ILE:HG12	2.38	0.53
1:B:66:THR:HG21	1:B:104:GLN:NE2	2.23	0.53
1:B:232:LEU:O	1:B:236:ARG:HG3	2.09	0.53
1:D:321:PHE:O	1:D:322:LEU:HD23	2.08	0.53
1:D:78:SER:O	1:D:143:MET:HA	2.09	0.52
1:D:116:ALA:O	1:D:120:MET:HG3	2.09	0.52
1:C:277:ASN:HB2	1:C:305:TYR:O	2.09	0.52
1:C:281:LEU:HD21	1:C:309:ALA:HB3	1.91	0.52
1:D:75:LEU:HD22	1:D:107:LEU:HD23	1.89	0.52
1:A:112:THR:HG22	1:A:114:ARG:H	1.73	0.52
1:C:298:SER:O	1:C:299:LEU:HD23	2.10	0.52
1:A:140:THR:C	1:A:141:LEU:HD12	2.34	0.52
1:C:87:TYR:C	1:C:160:GLY:HA2	2.34	0.52
1:C:94:ARG:HH11	1:C:123:GLU:HB3	1.74	0.52
1:C:187:ASP:HA	1:C:190:LYS:HZ1	1.74	0.52
1:D:112:THR:HG23	1:D:147:ASP:OD2	2.10	0.52
1:D:149:THR:HG22	1:D:149:THR:O	2.08	0.52
1:A:157:TYR:HA	1:A:162:LEU:HA	1.92	0.52
1:B:70:MET:HE3	1:B:263:GLN:HA	1.91	0.52
1:D:25:ASP:OD1	1:D:27:MET:HG2	2.09	0.52
1:A:223:ASP:HB3	1:A:226:ILE:HG22	1.91	0.52
1:C:112:THR:HG22	1:C:115:GLU:CG	2.40	0.52
1:C:226:ILE:C	1:C:229:PRO:HD2	2.34	0.52
1:C:249:LYS:HG3	1:C:252:ILE:HG12	1.91	0.52
1:D:82:LEU:HD12	1:D:175:ASN:O	2.09	0.52
1:B:55:GLY:HA3	1:B:288:PHE:CD1	2.44	0.52
1:B:76:VAL:O	1:B:145:ILE:HG23	2.09	0.52
1:C:7:TYR:OH	1:C:219:PRO:O	2.25	0.52
1:C:235:MET:HA	1:C:235:MET:CE	2.34	0.52
1:D:3:THR:C	1:D:80:LEU:HD21	2.35	0.52
1:A:280:TRP:O	1:A:281:LEU:HD23	2.09	0.52
1:B:58:ILE:CG2	1:B:69:GLY:HA3	2.30	0.52

Continued on next page...

Continued from previous page...

Atom-1	Atom-2	Interatomic distance (Å)	Clash overlap (Å)
1:C:130:PRO:HG3	1:C:323:PHE:C	2.35	0.52
1:D:95:PRO:O	1:D:125:PHE:HB2	2.09	0.52
1:A:241:PRO:CB	1:A:244:ILE:HD11	2.34	0.52
1:B:41:GLY:HA3	1:B:97:MET:HE2	1.92	0.52
1:D:72:GLU:O	1:D:266:LYS:HD2	2.09	0.52
1:A:297:LEU:HB2	1:A:313:LEU:HD21	1.91	0.52
1:B:58:ILE:HD12	1:B:58:ILE:O	2.10	0.52
1:B:74:GLY:O	1:B:263:GLN:HB3	2.10	0.52
1:D:74:GLY:O	1:D:76:VAL:HG23	2.10	0.52
1:B:97:MET:N	1:B:126:ARG:O	2.43	0.51
1:D:82:LEU:HD22	1:D:142:HIS:HD2	1.74	0.51
1:D:154:VAL:HG13	1:D:173:MET:SD	2.50	0.51
1:D:181:LEU:O	1:D:185:VAL:HG23	2.10	0.51
1:A:27:MET:CE	1:A:300:THR:HG23	2.39	0.51
1:B:79:LEU:CD1	1:B:143:MET:HE2	2.36	0.51
1:B:280:TRP:CH2	1:B:307:GLY:HA2	2.45	0.51
1:B:296:LYS:HB3	1:B:316:SER:CB	2.40	0.51
1:D:103:THR:HA	1:D:143:MET:CE	2.39	0.51
1:A:131:ARG:H	1:A:325:THR:CG2	2.22	0.51
1:A:215:ILE:O	1:A:218:ILE:HG12	2.10	0.51
1:A:232:LEU:O	1:A:236:ARG:HG3	2.10	0.51
1:B:20:MET:HB3	1:B:257:TRP:O	2.10	0.51
1:C:112:THR:HA	1:C:147:ASP:HB3	1.93	0.51
1:D:80:LEU:HD13	1:D:173:MET:CE	2.40	0.51
1:B:18:ARG:NH2	2:B:401:QC7:C04	2.73	0.51
1:C:42:HIS:HA	1:C:323:PHE:CD2	2.44	0.51
1:C:272:SER:HB2	1:C:275:THR:OG1	2.11	0.51
1:A:101:ILE:HG12	1:A:101:ILE:O	2.11	0.51
1:B:4:ARG:HD2	1:B:78:SER:CB	2.41	0.51
1:B:130:PRO:HG2	1:B:325:THR:HG21	1.91	0.51
1:B:147:ASP:OD1	1:B:149:THR:HB	2.10	0.51
1:D:231:VAL:O	1:D:234:VAL:HG22	2.10	0.51
1:B:80:LEU:HD22	1:B:173:MET:HE2	1.92	0.51
1:C:98:GLY:HA3	1:C:323:PHE:HD1	1.76	0.51
1:D:193:GLY:HA3	1:D:196:GLN:NE2	2.25	0.51
1:B:46:LYS:O	1:B:95:PRO:HA	2.11	0.51
1:B:75:LEU:HA	1:B:146:THR:O	2.11	0.51
1:A:147:ASP:OD2	1:A:151:ASN:HB3	2.11	0.51
1:A:271:GLU:HG2	1:A:272:SER:N	2.24	0.51
1:A:277:ASN:HA	1:B:277:ASN:HA	1.92	0.51
1:B:79:LEU:CD1	1:B:143:MET:HG3	2.39	0.51

Continued on next page...

Continued from previous page...

Atom-1	Atom-2	Interatomic distance (Å)	Clash overlap (Å)
1:C:96:ALA:HB1	1:C:128:ASP:HB2	1.92	0.51
1:D:79:LEU:C	1:D:80:LEU:HD12	2.36	0.51
1:D:140:THR:C	1:D:141:LEU:HD12	2.36	0.51
1:A:77:ALA:HB2	1:A:145:ILE:HD13	1.93	0.51
1:A:233:SER:HB2	1:B:241:PRO:HA	1.93	0.51
1:B:202:ASN:CG	1:B:240:VAL:HG11	2.36	0.51
1:B:231:VAL:O	1:B:234:VAL:HG22	2.10	0.51
1:A:27:MET:HE2	1:A:300:THR:HG23	1.93	0.50
1:A:201:THR:OG1	1:B:198:LEU:N	2.43	0.50
1:B:79:LEU:HD23	1:B:141:LEU:CD1	2.41	0.50
1:B:200:GLY:HA2	1:B:210:ARG:NH2	2.27	0.50
1:C:174:THR:HG21	1:C:208:PHE:N	2.26	0.50
1:D:35:ARG:NH1	1:D:288:PHE:HB2	2.24	0.50
1:A:117:VAL:O	1:A:121:LYS:HE2	2.11	0.50
1:C:201:THR:HG22	1:C:202:ASN:H	1.75	0.50
1:A:295:LYS:HG2	1:A:315:ASP:OD1	2.11	0.50
1:B:137:PRO:HB2	1:B:138:GLU:OE1	2.12	0.50
1:B:147:ASP:O	1:B:263:GLN:NE2	2.44	0.50
1:C:3:THR:H	1:C:19:THR:HB	1.76	0.50
1:C:7:TYR:CD1	1:C:218:ILE:HD11	2.45	0.50
1:C:116:ALA:O	1:C:120:MET:HG2	2.11	0.50
1:B:43:ASN:OD1	1:B:323:PHE:HB2	2.12	0.50
1:B:295:LYS:HA	1:B:315:ASP:HA	1.92	0.50
1:D:42:HIS:HB2	1:D:96:ALA:O	2.11	0.50
1:A:217:ALA:HB1	1:B:244:ILE:HG23	1.94	0.50
1:A:272:SER:HB2	1:A:275:THR:CG2	2.40	0.50
1:B:29:ASN:OD1	1:B:299:LEU:N	2.40	0.50
1:A:94:ARG:NH2	1:A:126:ARG:HA	2.27	0.50
1:B:325:THR:O	1:B:325:THR:OG1	2.27	0.50
1:C:34:PRO:O	1:C:37:MET:HG3	2.12	0.50
1:C:295:LYS:HG2	1:C:315:ASP:OD1	2.11	0.50
1:D:86:VAL:HB	1:D:159:ASP:HA	1.94	0.50
1:A:279:PHE:HA	1:A:307:GLY:O	2.12	0.50
1:B:36:GLY:N	1:B:52:SER:O	2.34	0.50
1:B:75:LEU:HD21	1:B:145:ILE:CG2	2.42	0.50
1:C:9:GLY:N	1:C:13:MET:O	2.44	0.50
1:D:20:MET:HG2	1:D:257:TRP:NE1	2.27	0.50
1:D:296:LYS:CB	1:D:316:SER:HB3	2.39	0.50
1:A:235:MET:HE2	1:A:235:MET:CA	2.41	0.50
1:B:41:GLY:O	1:B:97:MET:HG3	2.11	0.50
1:B:55:GLY:O	1:B:72:GLU:HG3	2.12	0.50

Continued on next page...

Continued from previous page...

Atom-1	Atom-2	Interatomic distance (Å)	Clash overlap (Å)
1:C:25:ASP:OD1	1:C:26:ILE:N	2.45	0.50
1:D:27:MET:CE	1:D:300:THR:HG23	2.41	0.50
1:D:155:ILE:CG1	1:D:164:ILE:HG12	2.42	0.50
1:C:26:ILE:HG12	1:C:26:ILE:O	2.12	0.49
1:D:64:ILE:HG21	1:D:322:LEU:HG	1.94	0.49
1:D:201:THR:HB	1:D:206:ASP:OD2	2.12	0.49
1:D:301:LYS:HB2	1:D:303:GLU:OE2	2.12	0.49
1:B:80:LEU:N	1:B:142:HIS:O	2.34	0.49
1:C:13:MET:CG	1:C:222:ALA:HA	2.42	0.49
1:C:92:ASP:OD1	1:C:94:ARG:HG3	2.12	0.49
1:C:176:SER:O	1:C:182:GLN:NE2	2.44	0.49
1:D:186:ASN:HA	1:D:209:VAL:HG22	1.94	0.49
1:D:189:TRP:CZ3	1:D:199:PRO:HD3	2.46	0.49
1:A:21:ASP:OD1	1:A:255:THR:HA	2.13	0.49
1:A:64:ILE:HG13	1:A:65:GLY:N	2.28	0.49
1:A:189:TRP:CD1	1:A:209:VAL:HG21	2.48	0.49
1:B:80:LEU:HD22	1:B:173:MET:CE	2.42	0.49
1:B:102:TRP:CB	1:B:127:ILE:HD13	2.43	0.49
1:C:75:LEU:CD2	1:C:107:LEU:HD23	2.42	0.49
1:A:22:TRP:HE1	1:A:24:GLU:HG2	1.76	0.49
1:B:15:VAL:HG22	1:B:262:ASP:HA	1.93	0.49
1:C:205:SER:O	1:C:209:VAL:HG23	2.13	0.49
1:D:145:ILE:HD12	1:D:145:ILE:N	2.27	0.49
1:D:157:TYR:HA	1:D:161:LYS:O	2.12	0.49
1:A:28:SER:HB2	1:A:60:THR:O	2.12	0.49
1:A:172:VAL:HG13	1:A:208:PHE:CZ	2.47	0.49
1:B:13:MET:HE1	1:B:224:ALA:HB2	1.95	0.49
1:C:228:VAL:HB	1:C:229:PRO:HD3	1.94	0.49
1:A:8:LEU:HD11	1:A:168:LYS:O	2.12	0.49
1:A:46:LYS:O	1:A:95:PRO:HA	2.13	0.49
1:A:301:LYS:HD2	1:A:301:LYS:N	2.27	0.49
1:B:179:TYR:CD2	1:B:183:LEU:HD23	2.47	0.49
1:A:174:THR:HG23	1:A:208:PHE:CD1	2.45	0.49
1:A:242:PHE:HE2	1:A:274:LEU:HD21	1.78	0.49
1:B:101:ILE:HG12	1:B:101:ILE:O	2.13	0.49
1:C:70:MET:HE1	1:C:266:LYS:HA	1.94	0.49
1:C:79:LEU:HG	1:C:141:LEU:HD22	1.94	0.49
1:C:121:LYS:HG2	1:C:164:ILE:HD12	1.94	0.49
1:C:255:THR:O	1:C:256:ARG:HD2	2.13	0.49
1:C:146:THR:HG23	1:C:151:ASN:O	2.13	0.49
1:C:326:PRO:C	1:D:324:GLU:HB2	2.37	0.49

Continued on next page...

Continued from previous page...

Atom-1	Atom-2	Interatomic distance (Å)	Clash overlap (Å)
1:D:77:ALA:CA	1:D:145:ILE:HG13	2.33	0.49
1:D:255:THR:HG23	1:D:255:THR:O	2.13	0.49
1:A:131:ARG:N	1:A:325:THR:HG21	2.27	0.49
1:A:171:GLN:HE21	1:A:215:ILE:HG21	1.77	0.49
1:A:232:LEU:HG	1:A:236:ARG:HE	1.78	0.49
1:B:145:ILE:O	1:B:152:THR:HG23	2.13	0.49
1:C:32:VAL:HG22	1:C:57:VAL:HG22	1.95	0.49
1:C:52:SER:CB	1:C:108:ASP:HB2	2.42	0.49
1:C:130:PRO:HB2	1:C:325:THR:HG23	1.93	0.49
1:D:144:ALA:HB2	1:D:173:MET:SD	2.53	0.49
1:B:79:LEU:HB3	1:B:141:LEU:HD13	1.94	0.49
1:B:202:ASN:ND2	1:B:207:ARG:HH21	2.11	0.49
1:B:220:GLN:OE1	1:B:220:GLN:HA	2.12	0.49
1:B:262:ASP:O	1:B:266:LYS:N	2.46	0.49
1:C:52:SER:HA	1:C:108:ASP:HB2	1.94	0.49
1:A:21:ASP:HA	1:A:254:SER:O	2.13	0.48
1:C:37:MET:HB2	1:C:39:ARG:HH12	1.77	0.48
1:C:110:PHE:CZ	1:C:116:ALA:HA	2.48	0.48
1:D:33:PHE:HB3	1:D:37:MET:SD	2.52	0.48
1:A:56:SER:HA	1:A:71:ASN:HA	1.96	0.48
1:A:81:PHE:HB3	1:A:175:ASN:OD1	2.12	0.48
1:A:132:MET:CE	1:A:136:GLY:HA3	2.43	0.48
1:B:4:ARG:HD2	1:B:78:SER:OG	2.13	0.48
1:B:18:ARG:HH22	2:B:401:QC7:C04	2.26	0.48
1:B:74:GLY:O	1:B:148:GLU:N	2.47	0.48
1:B:189:TRP:CE3	1:B:192:VAL:HG11	2.47	0.48
1:B:283:LEU:HA	1:B:286:ILE:CD1	2.36	0.48
1:C:39:ARG:HB3	1:C:101:ILE:HD11	1.94	0.48
1:D:4:ARG:O	1:D:172:VAL:HG23	2.13	0.48
1:A:34:PRO:HB3	1:A:288:PHE:C	2.38	0.48
1:A:87:TYR:OH	1:A:140:THR:HA	2.13	0.48
1:B:171:GLN:HE21	1:B:215:ILE:CG2	2.26	0.48
1:C:42:HIS:HD2	1:C:45:GLU:HB2	1.75	0.48
1:C:79:LEU:C	1:C:80:LEU:HD12	2.38	0.48
1:B:63:ASP:O	1:B:319:PHE:HB2	2.13	0.48
1:B:127:ILE:HG23	1:B:127:ILE:O	2.14	0.48
1:C:70:MET:CE	1:C:74:GLY:HA2	2.24	0.48
1:D:110:PHE:CD1	1:D:116:ALA:HA	2.49	0.48
1:D:98:GLY:HA2	1:D:128:ASP:O	2.13	0.48
1:D:154:VAL:HG11	1:D:179:TYR:CE2	2.49	0.48
1:D:155:ILE:CG2	1:D:162:LEU:HD11	2.43	0.48

Continued on next page...

Continued from previous page...

Atom-1	Atom-2	Interatomic distance (Å)	Clash overlap (Å)
1:A:249:LYS:HD3	1:A:252:ILE:HD11	1.94	0.48
1:C:42:HIS:ND1	1:C:323:PHE:HB2	2.28	0.48
1:C:54:TYR:O	1:C:108:ASP:HA	2.13	0.48
1:C:271:GLU:HB2	1:C:278:LEU:HD13	1.96	0.48
1:D:82:LEU:H	1:D:141:LEU:HA	1.78	0.48
1:D:112:THR:HA	1:D:147:ASP:CG	2.39	0.48
1:A:75:LEU:O	1:A:75:LEU:HD23	2.13	0.48
1:C:281:LEU:O	1:C:283:LEU:HD12	2.14	0.48
1:D:153:ALA:HA	1:D:166:GLU:HA	1.96	0.48
1:B:4:ARG:HA	1:B:17:GLY:O	2.13	0.48
1:B:18:ARG:HB3	1:B:259:SER:OG	2.14	0.48
1:B:308:ASP:OD1	1:B:310:VAL:HG23	2.14	0.48
1:A:86:VAL:HB	1:A:159:ASP:CA	2.44	0.48
1:B:18:ARG:CD	1:B:78:SER:HB3	2.42	0.48
1:B:20:MET:HG2	1:B:257:TRP:CE2	2.48	0.48
1:D:64:ILE:CG2	1:D:322:LEU:HG	2.44	0.48
1:C:326:PRO:HB3	1:D:326:PRO:HA	1.95	0.47
1:D:29:ASN:ND2	1:D:63:ASP:HB2	2.29	0.47
1:D:70:MET:HB2	1:D:76:VAL:HG22	1.96	0.47
1:D:144:ALA:C	1:D:145:ILE:HD12	2.39	0.47
1:B:158:LEU:HD23	1:B:158:LEU:O	2.13	0.47
1:C:41:GLY:O	1:C:98:GLY:N	2.43	0.47
1:C:50:TRP:CD1	1:C:109:ASN:HD21	2.31	0.47
1:C:86:VAL:HB	1:C:159:ASP:HA	1.95	0.47
1:D:29:ASN:HD22	1:D:63:ASP:HB2	1.79	0.47
1:A:94:ARG:HB3	1:A:95:PRO:HD2	1.97	0.47
1:C:52:SER:HB2	1:C:108:ASP:HB2	1.95	0.47
1:C:280:TRP:CH2	1:C:307:GLY:HA2	2.49	0.47
1:D:37:MET:HB2	1:D:39:ARG:HH12	1.78	0.47
1:D:113:VAL:HG13	1:D:147:ASP:HB2	1.96	0.47
1:B:79:LEU:HD11	1:B:143:MET:CE	2.40	0.47
1:B:215:ILE:HG23	1:B:216:HIS:CD2	2.50	0.47
1:C:187:ASP:HA	1:C:190:LYS:NZ	2.28	0.47
1:D:119:GLU:O	1:D:122:LYS:HG2	2.14	0.47
1:A:78:SER:O	1:A:143:MET:HG3	2.13	0.47
1:C:196:GLN:OE1	1:C:196:GLN:HA	2.14	0.47
1:D:55:GLY:HA3	1:D:288:PHE:CD1	2.50	0.47
1:D:194:GLY:HA3	1:D:213:PHE:CZ	2.49	0.47
1:A:131:ARG:H	1:A:325:THR:HG21	1.79	0.47
1:B:112:THR:HG22	1:B:114:ARG:H	1.79	0.47
1:D:16:THR:O	1:D:260:VAL:HA	2.15	0.47

Continued on next page...

Continued from previous page...

Atom-1	Atom-2	Interatomic distance (Å)	Clash overlap (Å)
1:A:153:ALA:HA	1:A:165:HIS:O	2.14	0.47
1:C:6:VAL:HG22	1:C:16:THR:HG23	1.97	0.47
1:C:81:PHE:HA	1:C:141:LEU:HA	1.96	0.47
1:D:155:ILE:HG12	1:D:164:ILE:CG1	2.43	0.47
1:D:189:TRP:CB	1:D:209:VAL:HG11	2.45	0.47
1:D:262:ASP:O	1:D:266:LYS:N	2.48	0.47
1:D:269:TYR:CD2	1:D:280:TRP:HB3	2.50	0.47
1:A:7:TYR:HB2	1:A:215:ILE:HD11	1.97	0.47
1:A:194:GLY:CA	1:A:198:LEU:HD21	2.42	0.47
1:B:202:ASN:ND2	1:B:240:VAL:HG11	2.29	0.47
1:C:149:THR:HG22	1:C:149:THR:O	2.15	0.47
1:D:3:THR:HG22	1:D:4:ARG:N	2.30	0.47
1:D:58:ILE:HD12	1:D:58:ILE:C	2.40	0.47
1:A:61:GLY:O	1:A:62:TYR:HB2	2.15	0.47
1:A:154:VAL:O	1:A:164:ILE:HA	2.14	0.47
1:B:96:ALA:HA	1:B:126:ARG:O	2.14	0.47
1:A:91:GLY:O	1:A:93:THR:HG23	2.15	0.47
1:B:50:TRP:CB	1:B:109:ASN:HD21	2.26	0.47
1:B:120:MET:SD	1:B:155:ILE:HD13	2.55	0.47
1:B:146:THR:HG22	1:B:263:GLN:HE22	1.80	0.47
1:B:226:ILE:O	1:B:229:PRO:HD2	2.15	0.47
1:C:73:LYS:CB	1:C:111:ALA:HB1	2.45	0.47
1:C:321:PHE:O	1:C:322:LEU:HD23	2.15	0.47
1:D:28:SER:O	1:D:299:LEU:HB2	2.15	0.47
1:A:210:ARG:O	1:A:214:TYR:HD1	1.98	0.46
1:B:86:VAL:CB	1:B:159:ASP:HA	2.19	0.46
1:B:186:ASN:HD21	1:B:212:SER:HB3	1.80	0.46
1:D:78:SER:C	1:D:143:MET:HG3	2.41	0.46
1:D:147:ASP:CG	1:D:148:GLU:H	2.22	0.46
1:B:186:ASN:OD1	1:B:190:LYS:HE3	2.15	0.46
1:B:202:ASN:CG	1:B:207:ARG:HH21	2.23	0.46
1:B:244:ILE:HB	1:B:252:ILE:HG21	1.98	0.46
1:B:174:THR:N	1:B:182:GLN:HE22	2.06	0.46
1:B:299:LEU:HD23	1:B:305:TYR:HE2	1.80	0.46
1:C:252:ILE:HG22	1:C:253:SER:N	2.30	0.46
1:D:38:GLN:HA	1:D:50:TRP:O	2.16	0.46
1:B:2:CYS:H	1:B:175:ASN:ND2	2.11	0.46
1:B:66:THR:HG21	1:B:104:GLN:HE21	1.80	0.46
1:C:114:ARG:HE	1:C:114:ARG:HA	1.79	0.46
1:D:29:ASN:O	1:D:60:THR:HG23	2.15	0.46
1:D:39:ARG:N	1:D:50:TRP:O	2.40	0.46

Continued on next page...

Continued from previous page...

Atom-1	Atom-2	Interatomic distance (Å)	Clash overlap (Å)
1:D:41:GLY:O	1:D:97:MET:HA	2.16	0.46
1:D:101:ILE:HG12	1:D:101:ILE:O	2.15	0.46
1:D:296:LYS:HG2	1:D:297:LEU:N	2.31	0.46
1:B:131:ARG:HG2	1:B:132:MET:N	2.30	0.46
1:B:32:VAL:HG22	1:B:57:VAL:HG22	1.97	0.46
1:B:114:ARG:NE	1:B:114:ARG:HA	2.31	0.46
1:C:82:LEU:HB3	1:C:85:SER:OG	2.16	0.46
1:C:141:LEU:N	1:C:141:LEU:HD12	2.31	0.46
1:D:7:TYR:CD1	1:D:218:ILE:HD11	2.51	0.46
1:D:155:ILE:HG23	1:D:162:LEU:HD11	1.98	0.46
1:D:204:SER:HA	1:D:207:ARG:CZ	2.46	0.46
1:A:36:GLY:HA2	1:A:51:THR:HG22	1.98	0.46
1:A:74:GLY:N	1:A:266:LYS:HE3	2.31	0.46
1:A:232:LEU:HD11	1:A:258:ARG:HD2	1.97	0.46
1:B:110:PHE:CD1	1:B:116:ALA:HA	2.51	0.46
1:C:46:LYS:HD2	1:C:46:LYS:N	2.20	0.46
1:D:12:ARG:O	1:D:264:LYS:HD2	2.16	0.46
1:D:92:ASP:OD1	1:D:94:ARG:HG3	2.16	0.46
1:D:194:GLY:HA2	1:D:198:LEU:HD21	1.98	0.46
1:A:58:ILE:HD12	1:A:58:ILE:C	2.41	0.46
1:A:306:ALA:HB1	1:B:277:ASN:OD1	2.16	0.46
1:B:82:LEU:HD13	1:B:175:ASN:O	2.16	0.46
1:D:23:LYS:HA	1:D:253:SER:HA	1.98	0.46
1:D:178:ARG:H	1:D:181:LEU:HD12	1.80	0.46
1:B:76:VAL:O	1:B:145:ILE:HA	2.16	0.45
1:C:58:ILE:C	1:C:58:ILE:HD12	2.41	0.45
1:C:201:THR:HG22	1:C:202:ASN:N	2.30	0.45
1:D:56:SER:HA	1:D:71:ASN:HA	1.99	0.45
1:D:79:LEU:HD12	1:D:142:HIS:C	2.42	0.45
1:A:4:ARG:HD2	1:A:78:SER:HB2	1.97	0.45
1:A:60:THR:HG22	1:A:61:GLY:N	2.32	0.45
1:A:117:VAL:HG12	1:A:121:LYS:CE	2.43	0.45
1:B:212:SER:O	1:B:215:ILE:HG22	2.16	0.45
1:C:6:VAL:HG13	1:C:16:THR:OG1	2.16	0.45
1:D:103:THR:CA	1:D:143:MET:HE1	2.41	0.45
1:A:50:TRP:CD1	1:A:109:ASN:HD21	2.35	0.45
1:A:92:ASP:CB	1:A:126:ARG:HD3	2.46	0.45
1:A:219:PRO:HG3	1:B:243:GLY:HA3	1.97	0.45
1:B:41:GLY:O	1:B:42:HIS:HB2	2.15	0.45
1:B:58:ILE:HD12	1:B:58:ILE:C	2.42	0.45
1:B:174:THR:HG22	1:B:175:ASN:N	2.25	0.45

Continued on next page...

Continued from previous page...

Atom-1	Atom-2	Interatomic distance (Å)	Clash overlap (Å)
1:B:280:TRP:O	1:B:281:LEU:HD23	2.16	0.45
1:C:66:THR:HG23	1:C:321:PHE:CZ	2.51	0.45
1:C:94:ARG:HD2	1:C:123:GLU:O	2.16	0.45
1:D:271:GLU:HG2	1:D:272:SER:N	2.32	0.45
1:A:75:LEU:HD21	1:A:145:ILE:HD11	1.98	0.45
1:A:95:PRO:HD2	1:A:124:THR:O	2.16	0.45
1:B:75:LEU:C	1:B:75:LEU:HD23	2.41	0.45
1:C:73:LYS:HG3	1:C:111:ALA:HB1	1.98	0.45
1:C:122:LYS:HB3	1:C:124:THR:HG23	1.99	0.45
1:C:201:THR:HB	1:C:206:ASP:CG	2.42	0.45
1:D:112:THR:HG23	1:D:147:ASP:CG	2.42	0.45
1:D:226:ILE:C	1:D:229:PRO:HD2	2.42	0.45
1:A:171:GLN:NE2	1:A:215:ILE:HG21	2.31	0.45
1:A:200:GLY:N	1:B:198:LEU:O	2.50	0.45
1:A:328:MET:CE	1:A:329:LEU:HG	2.45	0.45
1:D:55:GLY:O	1:D:72:GLU:HG2	2.16	0.45
1:A:131:ARG:C	1:A:325:THR:HG21	2.42	0.45
1:B:143:MET:CG	1:B:145:ILE:HD11	2.47	0.45
1:B:260:VAL:O	1:B:269:TYR:N	2.48	0.45
1:D:75:LEU:HD21	1:D:145:ILE:HG21	1.99	0.45
1:D:162:LEU:HD21	1:D:164:ILE:HD11	1.98	0.45
1:D:272:SER:HB2	1:D:275:THR:OG1	2.17	0.45
1:A:18:ARG:HB3	1:A:259:SER:OG	2.17	0.44
1:B:47:THR:HA	1:B:95:PRO:CB	2.45	0.44
1:C:3:THR:HG23	1:C:174:THR:HG22	1.99	0.44
1:A:39:ARG:HB2	1:A:50:TRP:CE2	2.52	0.44
1:A:72:GLU:OE2	1:A:288:PHE:HB2	2.17	0.44
1:A:183:LEU:HD13	1:A:183:LEU:C	2.42	0.44
1:B:81:PHE:CZ	1:B:138:GLU:CB	3.01	0.44
1:C:18:ARG:HD2	1:C:78:SER:CB	2.46	0.44
1:D:94:ARG:HB3	1:D:95:PRO:HD2	1.98	0.44
1:A:280:TRP:CZ3	1:A:307:GLY:HA2	2.52	0.44
1:B:232:LEU:HG	1:B:236:ARG:HE	1.82	0.44
1:C:30:ILE:HD13	1:C:59:ALA:CA	2.37	0.44
1:B:20:MET:CE	1:B:22:TRP:HB2	2.47	0.44
1:B:70:MET:HE2	1:B:266:LYS:HA	1.98	0.44
1:B:79:LEU:HA	1:B:143:MET:HA	1.99	0.44
1:B:186:ASN:CG	1:B:190:LYS:HE3	2.42	0.44
1:C:49:ASN:O	1:C:50:TRP:HB3	2.16	0.44
1:C:277:ASN:CG	1:C:306:ALA:HB2	2.43	0.44
1:D:1:MET:HB2	1:D:175:ASN:HD21	1.81	0.44

Continued on next page...

Continued from previous page...

Atom-1	Atom-2	Interatomic distance (Å)	Clash overlap (Å)
1:A:143:MET:HG2	1:A:144:ALA:N	2.32	0.44
1:B:102:TRP:HZ2	1:B:120:MET:HE1	1.83	0.44
1:B:132:MET:N	1:B:133:PRO:HD3	2.32	0.44
1:C:38:GLN:HA	1:C:50:TRP:O	2.17	0.44
1:C:154:VAL:O	1:C:164:ILE:HA	2.18	0.44
1:D:75:LEU:HD23	1:D:75:LEU:C	2.43	0.44
1:A:236:ARG:HB3	1:B:236:ARG:HB3	1.99	0.44
1:A:296:LYS:HE2	1:A:298:SER:CB	2.44	0.44
1:C:195:LEU:CD1	1:C:213:PHE:HZ	2.31	0.44
1:D:86:VAL:HB	1:D:159:ASP:CA	2.47	0.44
1:D:113:VAL:HG23	1:D:114:ARG:N	2.33	0.44
1:D:114:ARG:HA	1:D:114:ARG:NE	2.32	0.44
1:D:266:LYS:HE3	1:D:284:LYS:HG2	2.00	0.44
1:A:130:PRO:CB	1:A:325:THR:CG2	2.96	0.44
1:A:255:THR:O	1:A:256:ARG:HD2	2.18	0.44
1:C:52:SER:CA	1:C:108:ASP:HB2	2.48	0.44
1:D:46:LYS:O	1:D:96:ALA:N	2.49	0.44
1:B:75:LEU:HA	1:B:147:ASP:HA	2.00	0.44
1:B:232:LEU:O	1:B:235:MET:HB2	2.18	0.44
1:D:42:HIS:HB3	1:D:47:THR:OG1	2.18	0.44
1:B:235:MET:HE2	1:B:235:MET:CA	2.42	0.43
1:C:32:VAL:HG22	1:C:57:VAL:HG13	2.00	0.43
1:D:81:PHE:HA	1:D:141:LEU:CB	2.48	0.43
1:D:114:ARG:HA	1:D:114:ARG:HE	1.83	0.43
1:A:198:LEU:HD13	1:A:214:TYR:CE1	2.50	0.43
1:B:18:ARG:HD3	1:B:68:ASP:HB2	1.99	0.43
1:C:70:MET:CB	1:C:76:VAL:HG22	2.47	0.43
1:C:218:ILE:HB	1:C:230:SER:HB3	2.00	0.43
1:D:85:SER:HB3	1:D:140:THR:CB	2.26	0.43
1:D:117:VAL:HG21	1:D:166:GLU:CD	2.42	0.43
1:C:194:GLY:O	1:C:195:LEU:HB3	2.19	0.43
1:D:60:THR:HG22	1:D:319:PHE:CE2	2.54	0.43
1:D:193:GLY:HA3	1:D:196:GLN:HE21	1.83	0.43
1:A:36:GLY:HA2	1:A:51:THR:CG2	2.49	0.43
1:B:232:LEU:CD2	1:B:236:ARG:HH21	2.32	0.43
1:B:241:PRO:HB2	1:B:244:ILE:CD1	2.17	0.43
1:B:235:MET:HB3	1:B:258:ARG:HD2	2.01	0.43
1:C:66:THR:HG21	1:C:104:GLN:HE21	1.84	0.43
1:C:147:ASP:OD1	1:C:149:THR:HB	2.17	0.43
1:B:31:TYR:CD1	1:B:60:THR:HG21	2.53	0.43
1:B:79:LEU:CD1	1:B:103:THR:HG23	2.49	0.43

Continued on next page...

Continued from previous page...

Atom-1	Atom-2	Interatomic distance (Å)	Clash overlap (Å)
1:B:192:VAL:C	1:B:196:GLN:HE21	2.27	0.43
1:B:232:LEU:HD21	1:B:236:ARG:HH21	1.83	0.43
1:B:301:LYS:HB2	1:B:303:GLU:OE2	2.18	0.43
1:C:28:SER:HA	1:C:60:THR:O	2.18	0.43
1:C:114:ARG:HA	1:C:114:ARG:NE	2.33	0.43
1:C:221:THR:HG23	1:C:227:ALA:HB2	2.01	0.43
1:D:81:PHE:HA	1:D:141:LEU:HA	2.01	0.43
1:D:141:LEU:HD12	1:D:141:LEU:N	2.33	0.43
1:D:189:TRP:CH2	1:D:199:PRO:HD3	2.54	0.43
1:A:86:VAL:HB	1:A:160:GLY:N	2.34	0.43
1:B:76:VAL:HG23	1:B:263:GLN:HG2	2.01	0.43
1:C:82:LEU:HD13	1:C:142:HIS:CD2	2.54	0.43
1:C:105:TYR:HE2	1:C:120:MET:HE1	1.84	0.43
1:D:289:SER:OG	1:D:292:ALA:HB2	2.19	0.43
1:A:86:VAL:HB	1:A:160:GLY:H	1.83	0.43
1:A:162:LEU:C	1:A:162:LEU:HD12	2.43	0.43
1:C:173:MET:HA	1:C:208:PHE:HE1	1.83	0.43
1:D:87:TYR:CD1	1:D:88:SER:N	2.87	0.43
1:D:185:VAL:HG11	1:D:205:SER:HB3	2.01	0.43
1:C:113:VAL:HG12	1:C:166:GLU:OE2	2.19	0.43
1:C:232:LEU:O	1:C:236:ARG:HG3	2.19	0.43
1:A:152:THR:HG22	1:A:153:ALA:N	2.34	0.43
1:A:246:THR:HG21	1:B:195:LEU:HD11	2.00	0.43
1:B:4:ARG:CD	1:B:78:SER:HB2	2.49	0.43
1:B:55:GLY:HA3	1:B:288:PHE:CG	2.53	0.43
1:B:58:ILE:HD13	1:B:66:THR:HG22	1.99	0.43
1:B:87:TYR:O	1:B:88:SER:HB3	2.18	0.43
1:B:300:THR:C	1:B:302:GLY:H	2.27	0.43
1:C:75:LEU:HG	1:C:145:ILE:CG2	2.49	0.43
1:D:147:ASP:CG	1:D:148:GLU:N	2.77	0.43
1:D:172:VAL:HG11	1:D:212:SER:OG	2.19	0.43
1:A:94:ARG:HB3	1:A:95:PRO:CD	2.49	0.42
1:A:197:MET:HA	1:B:201:THR:HG21	2.01	0.42
1:C:11:ASP:O	1:C:264:LYS:HE2	2.19	0.42
1:C:13:MET:HE3	1:C:222:ALA:O	2.19	0.42
1:C:23:LYS:HA	1:C:253:SER:HA	2.01	0.42
1:C:201:THR:HB	1:C:206:ASP:OD2	2.19	0.42
1:D:155:ILE:CG2	1:D:164:ILE:HG12	2.48	0.42
1:A:75:LEU:HD23	1:A:107:LEU:HD23	2.00	0.42
1:B:64:ILE:HG13	1:B:65:GLY:N	2.32	0.42
1:C:105:TYR:CE2	1:C:120:MET:HE1	2.53	0.42

Continued on next page...

Continued from previous page...

Atom-1	Atom-2	Interatomic distance (Å)	Clash overlap (Å)
1:C:182:GLN:HG3	1:C:208:PHE:CD2	2.54	0.42
1:D:40:ALA:HB2	1:D:49:ASN:ND2	2.34	0.42
1:A:18:ARG:HD2	1:A:78:SER:HB3	2.00	0.42
1:A:153:ALA:HA	1:A:166:GLU:HA	2.00	0.42
1:C:145:ILE:HD12	1:C:145:ILE:N	2.34	0.42
1:D:262:ASP:HB3	1:D:267:VAL:H	1.85	0.42
1:A:64:ILE:HD12	1:A:322:LEU:HD12	2.00	0.42
1:B:31:TYR:OH	1:B:296:LYS:HD2	2.19	0.42
1:C:172:VAL:HG21	1:C:211:ALA:HB3	2.00	0.42
1:C:211:ALA:O	1:C:215:ILE:HG22	2.19	0.42
1:C:326:PRO:HB3	1:D:325:THR:O	2.20	0.42
1:D:26:ILE:HG22	1:D:256:ARG:CG	2.49	0.42
1:D:153:ALA:HA	1:D:165:HIS:O	2.20	0.42
1:D:172:VAL:HG13	1:D:208:PHE:CZ	2.54	0.42
1:A:26:ILE:HD13	1:A:28:SER:HB3	2.01	0.42
1:A:38:GLN:HA	1:A:51:THR:HA	2.01	0.42
1:A:298:SER:O	1:A:299:LEU:HD23	2.19	0.42
1:B:257:TRP:HB2	1:B:271:GLU:O	2.19	0.42
1:D:54:TYR:HE2	1:D:109:ASN:O	2.02	0.42
1:B:73:LYS:HB2	1:B:111:ALA:HB1	2.02	0.42
1:C:79:LEU:CD2	1:C:141:LEU:HD22	2.49	0.42
1:C:173:MET:HA	1:C:208:PHE:CE1	2.55	0.42
1:C:232:LEU:O	1:C:235:MET:HB2	2.19	0.42
1:D:155:ILE:HG12	1:D:164:ILE:CG2	2.45	0.42
1:A:141:LEU:HD12	1:A:141:LEU:N	2.34	0.42
1:D:225:LYS:O	1:D:229:PRO:HG2	2.19	0.42
1:A:34:PRO:O	1:A:37:MET:HG3	2.20	0.42
1:A:83:PRO:HD2	1:A:84:GLU:OE2	2.20	0.42
1:B:308:ASP:C	1:B:310:VAL:H	2.27	0.42
1:C:70:MET:CG	1:C:76:VAL:HG22	2.50	0.42
1:D:86:VAL:HB	1:D:159:ASP:N	2.35	0.42
1:B:45:GLU:HB3	1:B:96:ALA:HB3	2.01	0.42
1:C:97:MET:HB3	1:C:127:ILE:HD13	2.01	0.42
1:D:20:MET:HG2	1:D:257:TRP:CE2	2.55	0.42
1:A:7:TYR:CD1	1:A:218:ILE:HD11	2.54	0.42
1:B:79:LEU:C	1:B:80:LEU:HD12	2.44	0.42
1:B:94:ARG:HD3	1:B:94:ARG:HA	1.72	0.42
1:C:95:PRO:HD2	1:C:125:PHE:HA	2.02	0.42
1:D:84:GLU:H	1:D:84:GLU:CD	2.28	0.42
1:D:151:ASN:HA	1:D:168:LYS:CG	2.39	0.42
1:A:178:ARG:NH1	1:A:180:GLU:OE1	2.53	0.41

Continued on next page...

Continued from previous page...

Atom-1	Atom-2	Interatomic distance (Å)	Clash overlap (Å)
1:B:87:TYR:O	1:B:160:GLY:HA2	2.19	0.41
1:B:94:ARG:HB3	1:B:125:PHE:HA	2.01	0.41
1:B:325:THR:N	1:B:326:PRO:CD	2.80	0.41
1:C:192:VAL:HG13	1:C:193:GLY:N	2.35	0.41
1:B:235:MET:HA	1:B:238:VAL:CG2	2.49	0.41
1:C:7:TYR:OH	1:C:221:THR:N	2.46	0.41
1:D:41:GLY:O	1:D:98:GLY:N	2.39	0.41
1:D:145:ILE:HG22	1:D:146:THR:N	2.34	0.41
1:A:87:TYR:HB3	1:A:127:ILE:HB	2.02	0.41
1:A:262:ASP:CG	1:A:265:ASN:HD22	2.28	0.41
1:B:46:LYS:C	1:B:47:THR:HG23	2.45	0.41
1:B:78:SER:O	1:B:143:MET:HA	2.21	0.41
1:B:232:LEU:HD11	1:B:258:ARG:CZ	2.49	0.41
1:C:29:ASN:HB2	1:C:63:ASP:OD1	2.21	0.41
1:C:321:PHE:HB3	1:C:323:PHE:CZ	2.56	0.41
1:D:70:MET:HE1	1:D:262:ASP:O	2.20	0.41
1:A:95:PRO:O	1:A:126:ARG:N	2.52	0.41
1:B:172:VAL:HG21	1:B:211:ALA:HB3	2.03	0.41
1:C:6:VAL:HG22	1:C:16:THR:CG2	2.50	0.41
1:C:20:MET:HG2	1:C:257:TRP:CE2	2.55	0.41
1:C:42:HIS:CE1	1:C:323:PHE:HB2	2.55	0.41
1:D:232:LEU:CD2	1:D:236:ARG:HH21	2.33	0.41
1:A:280:TRP:N	1:A:307:GLY:O	2.53	0.41
1:B:27:MET:HE2	1:B:300:THR:CG2	2.51	0.41
1:C:200:GLY:HA2	1:C:210:ARG:NH2	2.36	0.41
1:D:194:GLY:HA3	1:D:213:PHE:CE1	2.56	0.41
1:A:286:ILE:HG22	1:A:287:ASP:N	2.35	0.41
1:C:326:PRO:CA	1:D:324:GLU:HB2	2.50	0.41
1:D:102:TRP:HE1	1:D:120:MET:HE1	1.85	0.41
1:C:76:VAL:O	1:C:145:ILE:HA	2.21	0.41
1:D:58:ILE:HG22	1:D:107:LEU:CD1	2.50	0.41
1:D:78:SER:O	1:D:143:MET:HG3	2.20	0.41
1:D:199:PRO:HB2	1:D:206:ASP:OD2	2.20	0.41
1:D:235:MET:HA	1:D:235:MET:CE	2.40	0.41
1:B:16:THR:O	1:B:260:VAL:HG13	2.20	0.41
1:B:75:LEU:HD21	1:B:145:ILE:HG21	2.02	0.41
1:C:23:LYS:HG2	1:C:253:SER:N	2.36	0.41
1:C:215:ILE:O	1:C:218:ILE:HG12	2.21	0.41
1:D:256:ARG:HG3	1:D:257:TRP:HD1	1.86	0.41
1:A:147:ASP:OD1	1:A:149:THR:HB	2.21	0.41
1:A:152:THR:HB	1:A:170:TYR:O	2.21	0.41

Continued on next page...

Continued from previous page...

Atom-1	Atom-2	Interatomic distance (Å)	Clash overlap (Å)
1:A:234:VAL:HG23	1:A:235:MET:CE	2.50	0.41
1:A:283:LEU:N	1:A:283:LEU:HD12	2.36	0.41
1:B:62:TYR:O	1:B:63:ASP:HB2	2.21	0.41
1:B:145:ILE:HD12	1:B:145:ILE:N	2.36	0.41
1:C:75:LEU:HD23	1:C:75:LEU:C	2.46	0.41
1:C:110:PHE:HZ	1:C:119:GLU:CB	2.34	0.41
1:D:21:ASP:HA	1:D:254:SER:O	2.20	0.41
1:D:27:MET:HE2	1:D:300:THR:CG2	2.45	0.41
1:D:42:HIS:NE2	1:D:323:PHE:HB3	2.36	0.41
1:D:76:VAL:O	1:D:145:ILE:HA	2.21	0.41
1:D:76:VAL:C	1:D:145:ILE:HG23	2.46	0.41
1:D:113:VAL:CG2	1:D:151:ASN:HB3	2.44	0.41
1:D:297:LEU:O	1:D:299:LEU:HG	2.21	0.41
1:A:74:GLY:CA	1:A:266:LYS:HE3	2.50	0.41
1:A:140:THR:N	1:A:141:LEU:HD12	2.35	0.41
1:B:232:LEU:HD12	1:B:235:MET:HB2	2.03	0.41
1:D:26:ILE:HG12	1:D:61:GLY:O	2.21	0.41
1:D:172:VAL:HG22	1:D:173:MET:N	2.36	0.41
1:A:171:GLN:NE2	1:A:215:ILE:CG2	2.84	0.40
1:A:259:SER:HB2	1:A:268:TYR:OH	2.22	0.40
1:B:99:ILE:HD11	1:B:141:LEU:HD11	2.02	0.40
1:B:279:PHE:HB3	1:B:306:ALA:CA	2.51	0.40
1:C:26:ILE:HD13	1:C:257:TRP:HE1	1.86	0.40
1:C:82:LEU:HD23	1:C:85:SER:OG	2.21	0.40
1:D:96:ALA:HB2	1:D:126:ARG:NH2	2.36	0.40
1:D:115:GLU:H	1:D:115:GLU:HG3	1.67	0.40
1:A:39:ARG:HD3	1:A:101:ILE:HD11	2.03	0.40
1:A:210:ARG:HH11	1:A:237:ASN:HD21	1.69	0.40
1:A:262:ASP:O	1:A:266:LYS:N	2.54	0.40
1:B:30:ILE:HD13	1:B:30:ILE:HA	1.98	0.40
1:B:122:LYS:CB	1:B:124:THR:HG23	2.50	0.40
1:B:317:GLN:OE1	1:B:317:GLN:N	2.44	0.40
1:C:11:ASP:O	1:C:12:ARG:HB2	2.22	0.40
1:C:27:MET:HB2	1:C:62:TYR:HD1	1.86	0.40
1:D:47:THR:HG22	1:D:48:VAL:N	2.34	0.40
1:D:201:THR:HG22	1:D:202:ASN:N	2.27	0.40
1:A:19:THR:HG22	1:A:20:MET:N	2.36	0.40
1:B:228:VAL:HB	1:B:229:PRO:CD	2.40	0.40
1:B:305:TYR:HD1	1:B:312:ASP:OD2	2.04	0.40
1:C:31:TYR:CE2	1:C:296:LYS:HB2	2.56	0.40
1:C:271:GLU:HG2	1:C:272:SER:N	2.35	0.40

Continued on next page...

Continued from previous page...

Atom-1	Atom-2	Interatomic distance (Å)	Clash overlap (Å)
1:D:154:VAL:O	1:D:165:HIS:N	2.53	0.40
1:A:120:MET:HE1	1:A:125:PHE:CZ	2.56	0.40
1:B:106:VAL:HG13	1:B:110:PHE:CD2	2.56	0.40
1:B:141:LEU:HD12	1:B:141:LEU:C	2.45	0.40
1:B:174:THR:HB	1:B:182:GLN:NE2	2.37	0.40
1:B:189:TRP:CH2	1:B:199:PRO:HG3	2.57	0.40
1:B:296:LYS:HE2	1:B:298:SER:HB2	2.04	0.40
1:C:172:VAL:HG11	1:C:212:SER:CB	2.38	0.40
1:D:112:THR:HA	1:D:147:ASP:OD1	2.21	0.40
1:D:149:THR:HG22	1:D:168:LYS:NZ	2.37	0.40
1:D:221:THR:HG21	1:D:226:ILE:CG2	2.52	0.40
1:D:232:LEU:HD23	1:D:236:ARG:HH21	1.87	0.40
1:A:5:ALA:HA	1:A:172:VAL:HA	2.02	0.40
1:A:13:MET:HE2	1:A:224:ALA:HA	2.03	0.40
1:B:28:SER:HB2	1:B:60:THR:O	2.20	0.40
1:B:31:TYR:HD1	1:B:60:THR:HG21	1.87	0.40
1:B:152:THR:HG22	1:B:153:ALA:N	2.36	0.40
1:B:271:GLU:HG2	1:B:272:SER:N	2.36	0.40
1:C:35:ARG:HG2	1:C:288:PHE:O	2.22	0.40
1:C:62:TYR:O	1:C:63:ASP:HB2	2.21	0.40
1:D:32:VAL:HG13	1:D:57:VAL:HG22	2.03	0.40

All (2) symmetry-related close contacts are listed below. The label for Atom-2 includes the symmetry operator and encoded unit-cell translations to be applied.

Atom-1	Atom-2	Interatomic distance (Å)	Clash overlap (Å)
1:A:44:LYS:NZ	1:B:324:GLU:OE1[3_555]	2.16	0.04
1:A:320:THR:OG1	1:B:132:MET:O[3_555]	2.18	0.02

5.3 Torsion angles [i](#)

5.3.1 Protein backbone [i](#)

In the following table, the Percentiles column shows the percent Ramachandran outliers of the chain as a percentile score with respect to all X-ray entries followed by that with respect to entries of similar resolution.

The Analysed column shows the number of residues for which the backbone conformation was analysed, and the total number of residues.

Mol	Chain	Analysed	Favoured	Allowed	Outliers	Percentiles	
1	A	327/336 (97%)	297 (91%)	27 (8%)	3 (1%)	14	48
1	B	324/336 (96%)	285 (88%)	39 (12%)	0	100	100
1	C	315/336 (94%)	277 (88%)	37 (12%)	1 (0%)	36	66
1	D	315/336 (94%)	285 (90%)	29 (9%)	1 (0%)	36	66
All	All	1281/1344 (95%)	1144 (89%)	132 (10%)	5 (0%)	30	62

All (5) Ramachandran outliers are listed below:

Mol	Chain	Res	Type
1	A	170	TYR
1	C	276	PRO
1	A	133	PRO
1	A	250	PRO
1	D	276	PRO

5.3.2 Protein sidechains [i](#)

In the following table, the Percentiles column shows the percent sidechain outliers of the chain as a percentile score with respect to all X-ray entries followed by that with respect to entries of similar resolution.

The Analysed column shows the number of residues for which the sidechain conformation was analysed, and the total number of residues.

Mol	Chain	Analysed	Rotameric	Outliers	Percentiles	
1	A	287/294 (98%)	286 (100%)	1 (0%)	86	83
1	B	284/294 (97%)	280 (99%)	4 (1%)	59	72
1	C	279/294 (95%)	278 (100%)	1 (0%)	84	82
1	D	279/294 (95%)	279 (100%)	0	100	100
All	All	1129/1176 (96%)	1123 (100%)	6 (0%)	81	81

All (6) residues with a non-rotameric sidechain are listed below:

Mol	Chain	Res	Type
1	A	84	GLU
1	B	1	MET
1	B	3	THR
1	B	92	ASP
1	B	325	THR
1	C	192	VAL

Sometimes sidechains can be flipped to improve hydrogen bonding and reduce clashes. All (21) such sidechains are listed below:

Mol	Chain	Res	Type
1	A	109	ASN
1	A	142	HIS
1	A	171	GLN
1	A	202	ASN
1	B	109	ASN
1	B	165	HIS
1	B	171	GLN
1	B	182	GLN
1	B	196	GLN
1	B	216	HIS
1	C	104	GLN
1	C	171	GLN
1	C	216	HIS
1	C	251	HIS
1	C	263	GLN
1	D	49	ASN
1	D	142	HIS
1	D	171	GLN
1	D	175	ASN
1	D	216	HIS
1	D	263	GLN

5.3.3 RNA [i](#)

There are no RNA molecules in this entry.

5.4 Non-standard residues in protein, DNA, RNA chains [i](#)

There are no non-standard protein/DNA/RNA residues in this entry.

5.5 Carbohydrates [i](#)

There are no oligosaccharides in this entry.

5.6 Ligand geometry [i](#)

1 ligand is modelled in this entry.

In the following table, the Counts columns list the number of bonds (or angles) for which Mogul statistics could be retrieved, the number of bonds (or angles) that are observed in the model and the number of bonds (or angles) that are defined in the Chemical Component Dictionary. The Link column lists molecule types, if any, to which the group is linked. The Z score for a bond length (or angle) is the number of standard deviations the observed value is removed from the expected value. A bond length (or angle) with $|Z| > 2$ is considered an outlier worth inspection. RMSZ is the root-mean-square of all Z scores of the bond lengths (or angles).

Mol	Type	Chain	Res	Link	Bond lengths			Bond angles		
					Counts	RMSZ	# Z > 2	Counts	RMSZ	# Z > 2
2	QC7	B	401	1	28,30,30	2.83	8 (28%)	41,47,47	2.82	15 (36%)

In the following table, the Chirals column lists the number of chiral outliers, the number of chiral centers analysed, the number of these observed in the model and the number defined in the Chemical Component Dictionary. Similar counts are reported in the Torsion and Rings columns. '-' means no outliers of that kind were identified.

Mol	Type	Chain	Res	Link	Chirals	Torsions	Rings
2	QC7	B	401	1	-	7/15/65/65	0/3/3/3

All (8) bond length outliers are listed below:

Mol	Chain	Res	Type	Atoms	Z	Observed(Å)	Ideal(Å)
2	B	401	QC7	C27-C26	8.27	1.69	1.53
2	B	401	QC7	C13-C25	6.80	1.66	1.53
2	B	401	QC7	C16-C14	5.03	1.62	1.52
2	B	401	QC7	C16-C17	4.91	1.61	1.53
2	B	401	QC7	C11-C12	4.23	1.61	1.53
2	B	401	QC7	C10-C09	2.47	1.58	1.53
2	B	401	QC7	C13-C14	-2.21	1.49	1.53
2	B	401	QC7	O15-C14	-2.20	1.38	1.43

All (15) bond angle outliers are listed below:

Mol	Chain	Res	Type	Atoms	Z	Observed(°)	Ideal(°)
2	B	401	QC7	C11-C12-C28	-10.10	102.96	114.65
2	B	401	QC7	C11-C12-C13	6.29	121.22	112.11
2	B	401	QC7	C18-C17-C16	-6.25	104.08	111.23
2	B	401	QC7	C28-C12-C13	5.54	118.03	111.83
2	B	401	QC7	C25-C13-C12	-4.59	103.32	109.76
2	B	401	QC7	C25-C13-C14	3.37	116.10	111.86
2	B	401	QC7	C03-C04-C05	-3.00	110.09	114.77
2	B	401	QC7	C04-C03-C02	2.81	119.70	114.46
2	B	401	QC7	C26-C27-C28	2.68	117.27	112.74

Continued on next page...

Continued from previous page...

Mol	Chain	Res	Type	Atoms	Z	Observed(°)	Ideal(°)
2	B	401	QC7	C22-C23-C17	2.60	111.47	107.75
2	B	401	QC7	C23-C25-C13	2.48	114.60	111.84
2	B	401	QC7	C17-C16-C14	-2.18	111.81	114.40
2	B	401	QC7	C12-C28-C09	-2.16	108.02	114.69
2	B	401	QC7	C22-C21-C19	2.04	113.18	110.48
2	B	401	QC7	C22-C23-C25	-2.04	108.18	111.34

There are no chirality outliers.

All (7) torsion outliers are listed below:

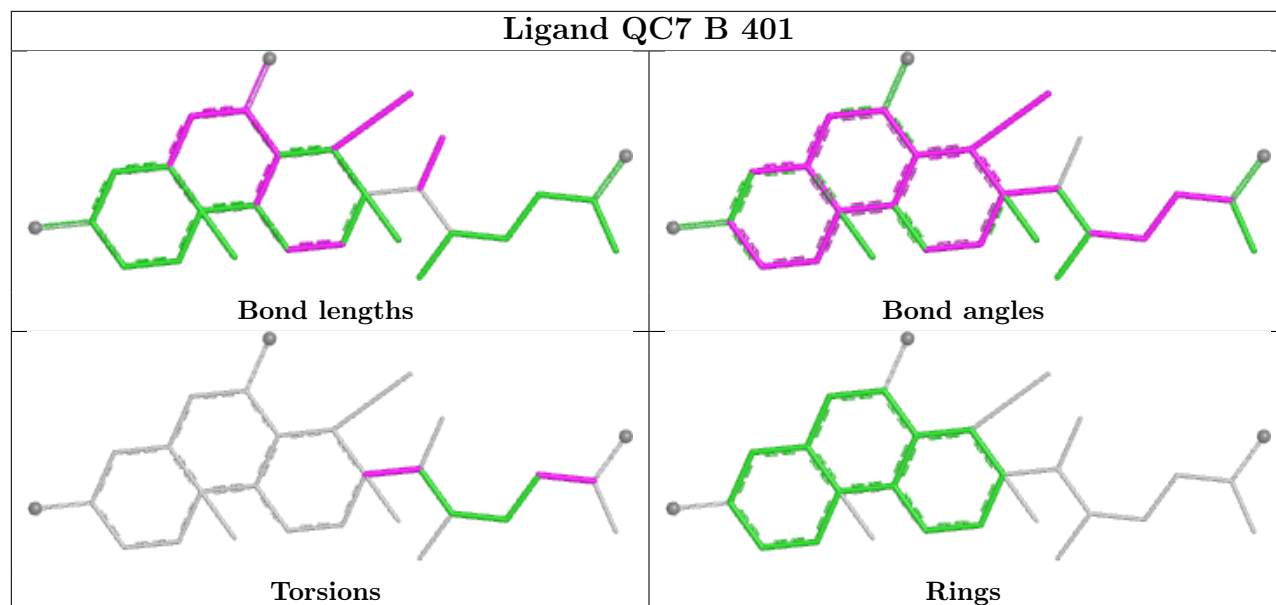
Mol	Chain	Res	Type	Atoms
2	B	401	QC7	C03-C04-C05-C07
2	B	401	QC7	C03-C04-C05-O06
2	B	401	QC7	C10-C09-C28-C27
2	B	401	QC7	C10-C09-C28-C29
2	B	401	QC7	C10-C09-C28-C12
2	B	401	QC7	C02-C09-C28-C29
2	B	401	QC7	C02-C09-C28-C12

There are no ring outliers.

1 monomer is involved in 2 short contacts:

Mol	Chain	Res	Type	Clashes	Symm-Clashes
2	B	401	QC7	2	0

The following is a two-dimensional graphical depiction of Mogul quality analysis of bond lengths, bond angles, torsion angles, and ring geometry for all instances of the Ligand of Interest. In addition, ligands with molecular weight > 250 and outliers as shown on the validation Tables will also be included. For torsion angles, if less than 5% of the Mogul distribution of torsion angles is within 10 degrees of the torsion angle in question, then that torsion angle is considered an outlier. Any bond that is central to one or more torsion angles identified as an outlier by Mogul will be highlighted in the graph. For rings, the root-mean-square deviation (RMSD) between the ring in question and similar rings identified by Mogul is calculated over all ring torsion angles. If the average RMSD is greater than 60 degrees and the minimal RMSD between the ring in question and any Mogul-identified rings is also greater than 60 degrees, then that ring is considered an outlier. The outliers are highlighted in purple. The color gray indicates Mogul did not find sufficient equivalents in the CSD to analyse the geometry.



5.7 Other polymers [i](#)

There are no such residues in this entry.

5.8 Polymer linkage issues [i](#)

There are no chain breaks in this entry.

6 Fit of model and data

6.1 Protein, DNA and RNA chains

In the following table, the column labelled ‘#RSRZ > 2’ contains the number (and percentage) of RSRZ outliers, followed by percent RSRZ outliers for the chain as percentile scores relative to all X-ray entries and entries of similar resolution. The OWAB column contains the minimum, median, 95th percentile and maximum values of the occupancy-weighted average B-factor per residue. The column labelled ‘Q < 0.9’ lists the number of (and percentage) of residues with an average occupancy less than 0.9.

Mol	Chain	Analysed	<RSRZ>	#RSRZ>2	OWAB(Å ²)	Q<0.9
1	A	329/336 (97%)	0.31	4 (1%) 76 50	107, 134, 173, 235	0
1	B	326/336 (97%)	0.37	2 (0%) 85 64	114, 152, 182, 205	0
1	C	319/336 (94%)	0.74	24 (7%) 20 13	196, 234, 255, 285	0
1	D	319/336 (94%)	0.70	23 (7%) 21 14	168, 222, 275, 336	0
All	All	1293/1344 (96%)	0.53	53 (4%) 41 22	107, 191, 254, 336	0

All (53) RSRZ outliers are listed below:

Mol	Chain	Res	Type	RSRZ
1	C	302	GLY	3.2
1	C	84	GLU	3.0
1	C	81	PHE	3.0
1	C	189	TRP	2.9
1	C	202	ASN	2.9
1	C	237	ASN	2.8
1	D	51	THR	2.8
1	D	214	TYR	2.8
1	C	326	PRO	2.8
1	D	231	VAL	2.8
1	C	175	ASN	2.7
1	D	199	PRO	2.7
1	D	189	TRP	2.6
1	C	139	SER	2.6
1	C	6	VAL	2.6
1	D	188	TYR	2.5
1	C	184	ALA	2.5
1	D	105	TYR	2.5
1	B	263	GLN	2.5
1	C	61	GLY	2.5
1	D	228	VAL	2.5

Continued on next page...

Continued from previous page...

Mol	Chain	Res	Type	RSRZ
1	A	202	ASN	2.5
1	D	160	GLY	2.5
1	D	235	MET	2.5
1	D	48	VAL	2.3
1	D	287	ASP	2.3
1	C	306	ALA	2.3
1	C	318	SER	2.3
1	D	216	HIS	2.3
1	A	163	SER	2.3
1	D	238	VAL	2.3
1	D	215	ILE	2.2
1	C	5	ALA	2.2
1	A	41	GLY	2.2
1	B	161	LYS	2.2
1	D	206	ASP	2.2
1	C	172	VAL	2.2
1	C	219	PRO	2.2
1	D	293	GLY	2.2
1	D	43	ASN	2.1
1	D	12	ARG	2.1
1	D	161	LYS	2.1
1	C	181	LEU	2.1
1	C	99	ILE	2.1
1	C	196	GLN	2.1
1	A	309	ALA	2.1
1	D	307	GLY	2.0
1	D	171	GLN	2.0
1	C	26	ILE	2.0
1	C	312	ASP	2.0
1	D	227	ALA	2.0
1	C	199	PRO	2.0
1	C	231	VAL	2.0

6.2 Non-standard residues in protein, DNA, RNA chains [i](#)

There are no non-standard protein/DNA/RNA residues in this entry.

6.3 Carbohydrates [i](#)

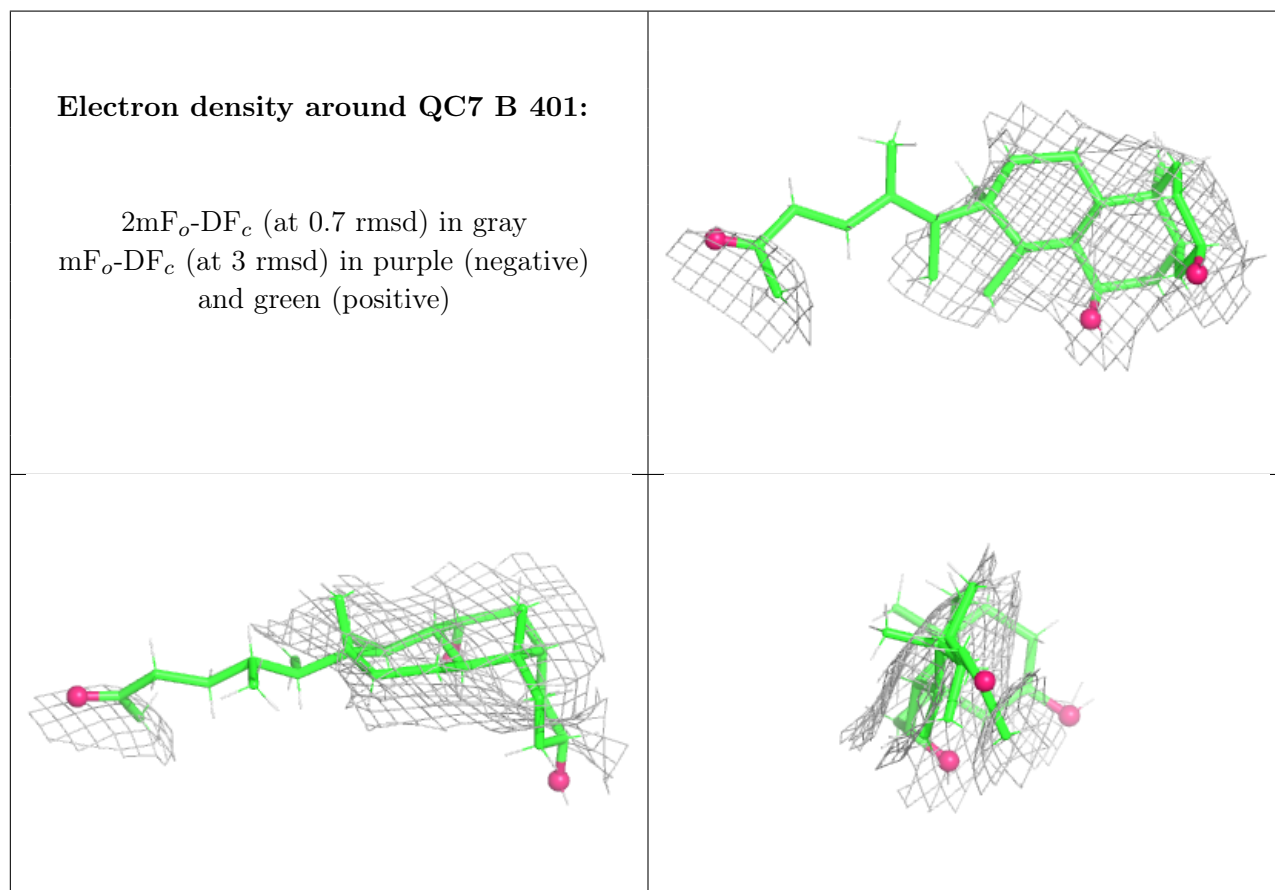
There are no oligosaccharides in this entry.

6.4 Ligands [i](#)

In the following table, the Atoms column lists the number of modelled atoms in the group and the number defined in the chemical component dictionary. The B-factors column lists the minimum, median, 95th percentile and maximum values of B factors of atoms in the group. The column labelled 'Q< 0.9' lists the number of atoms with occupancy less than 0.9.

Mol	Type	Chain	Res	Atoms	RSCC	RSR	B-factors(Å ²)	Q<0.9
2	QC7	B	401	28/28	0.95	0.18	226,237,246,251	0

The following is a graphical depiction of the model fit to experimental electron density of all instances of the Ligand of Interest. In addition, ligands with molecular weight > 250 and outliers as shown on the geometry validation Tables will also be included. Each fit is shown from different orientation to approximate a three-dimensional view.



6.5 Other polymers [i](#)

There are no such residues in this entry.