



# Full wwPDB X-ray Structure Validation Report ⓘ

Mar 6, 2026 – 06:35 AM UTC

PDB ID : 6U78 / pdb\_00006u78  
Title : Rv3722c in complex with glutamic acid  
Authors : Mandyoli, L.; Sacchettini, J.C.  
Deposited on : 2019-08-31  
Resolution : 2.60 Å(reported)

This is a Full wwPDB X-ray Structure Validation Report for a publicly released PDB entry.

We welcome your comments at [validation@mail.wwpdb.org](mailto:validation@mail.wwpdb.org)

A user guide is available at

<https://www.wwpdb.org/validation/2017/XrayValidationReportHelp>

with specific help available everywhere you see the ⓘ symbol.

The types of validation reports are described at

<http://www.wwpdb.org/validation/2017/FAQs#types>.

---

The following versions of software and data (see [references ⓘ](#)) were used in the production of this report:

MolProbity : 4-5-2 with Phenix2.0  
Mogul : 2022.3.0, CSD as543be (2022)  
Xtriage (Phenix) : 2.0  
EDS : 3.0  
Buster-report : wwPDB partial adaption of 1.1.7 (2018)  
Percentile statistics : 20250101.v01 (using entries in the PDB archive January 1st 2025)  
CCP4 : 9.0.010 (Gargrove)  
Density-Fitness : 1.0.12  
Ideal geometry (proteins) : Engh & Huber (2001)  
Ideal geometry (DNA, RNA) : Parkinson et al. (1996)  
Validation Pipeline (wwPDB-VP) : 2.49

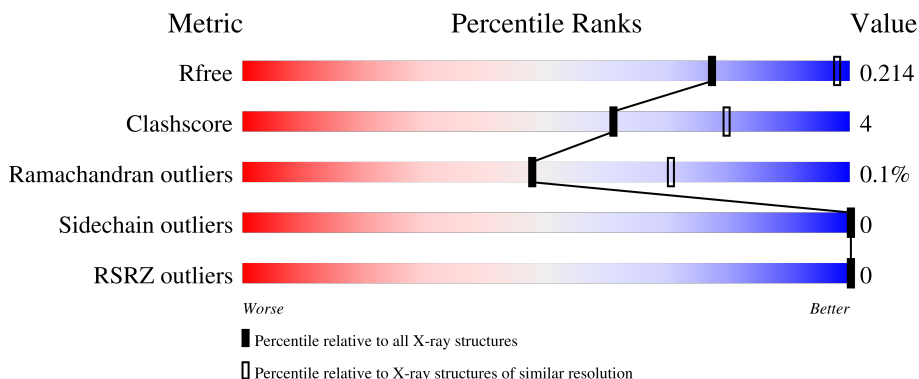
# 1 Overall quality at a glance

The following experimental techniques were used to determine the structure:

*X-RAY DIFFRACTION*

The reported resolution of this entry is 2.60 Å.

Percentile scores (ranging between 0-100) for global validation metrics of the entry are shown in the following graphic. The table shows the number of entries on which the scores are based.



Metric	Whole archive (#Entries)	Similar resolution (#Entries, resolution range(Å))
$R_{free}$	180053	4008 (2.60-2.60)
Clashscore	190562	4347 (2.60-2.60)
Ramachandran outliers	187476	4277 (2.60-2.60)
Sidechain outliers	187428	4277 (2.60-2.60)
RSRZ outliers	180081	4008 (2.60-2.60)

The table below summarises the geometric issues observed across the polymeric chains and their fit to the electron density. The red, orange, yellow and green segments of the lower bar indicate the fraction of residues that contain outliers for  $\geq 3$ , 2, 1 and 0 types of geometric quality criteria respectively. A grey segment represents the fraction of residues that are not modelled. The numeric value for each fraction is indicated below the corresponding segment, with a dot representing fractions  $\leq 5\%$ . The upper red bar (where present) indicates the fraction of residues that have poor fit to the electron density. The numeric value is given above the bar.

Mol	Chain	Length	Quality of chain
1	A	435	85% 11% .
1	B	435	86% 11% .
1	C	435	86% 9% .
1	D	435	88% 9% .

## 2 Entry composition

There are 6 unique types of molecules in this entry. The entry contains 13093 atoms, of which 0 are hydrogens and 0 are deuteriums.

In the tables below, the ZeroOcc column contains the number of atoms modelled with zero occupancy, the AltConf column contains the number of residues with at least one atom in alternate conformation and the Trace column contains the number of residues modelled with at most 2 atoms.

- Molecule 1 is a protein called Aminotransferase.

Mol	Chain	Residues	Atoms					ZeroOcc	AltConf	Trace
			Total	C	N	O	S			
1	A	419	3225	2058	559	597	11	0	0	0
1	B	421	3239	2068	559	601	11	0	0	0
1	C	417	3210	2050	556	593	11	0	0	0
1	D	419	3223	2057	559	596	11	0	0	0

There are 4 discrepancies between the modelled and reference sequences:

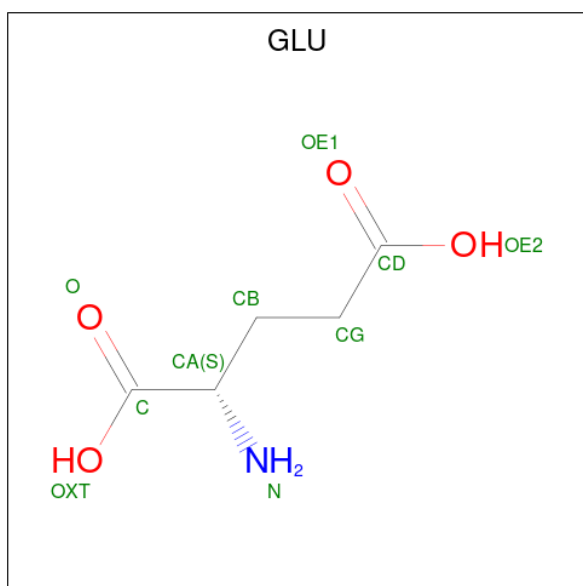
Chain	Residue	Modelled	Actual	Comment	Reference
A	1	VAL	-	expression tag	UNP A0A0E8TWE4
B	1	VAL	-	expression tag	UNP A0A0E8TWE4
C	1	VAL	-	expression tag	UNP A0A0E8TWE4
D	1	VAL	-	expression tag	UNP A0A0E8TWE4

- Molecule 2 is PYRIDOXAL-5'-PHOSPHATE (CCD ID: PLP) (formula: C<sub>8</sub>H<sub>10</sub>NO<sub>6</sub>P) (labeled as "Ligand of Interest" by depositor).



Mol	Chain	Residues	Atoms					ZeroOcc	AltConf
			Total	C	N	O	P		
2	A	1	16	8	1	6	1	0	0
2	B	1	16	8	1	6	1	0	0
2	C	1	15	8	1	5	1	0	0
2	D	1	15	8	1	5	1	0	0

- Molecule 3 is GLUTAMIC ACID (CCD ID: GLU) (formula:  $C_5H_9NO_4$ ) (labeled as "Ligand of Interest" by depositor).



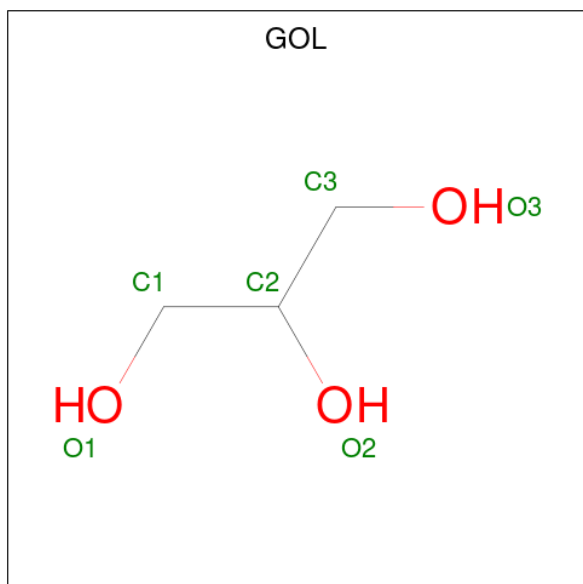
Mol	Chain	Residues	Atoms				ZeroOcc	AltConf
			Total	C	N	O		
3	B	1	10	5	1	4	0	0

- Molecule 4 is SULFATE ION (CCD ID: SO4) (formula: O<sub>4</sub>S).



Mol	Chain	Residues	Atoms			ZeroOcc	AltConf
			Total	O	S		
4	B	1	5	4	1	0	0
4	D	1	5	4	1	0	0

- Molecule 5 is GLYCEROL (CCD ID: GOL) (formula: C<sub>3</sub>H<sub>8</sub>O<sub>3</sub>).



Mol	Chain	Residues	Atoms			ZeroOcc	AltConf
5	B	1	Total	C	O	0	0
			6	3	3		

- Molecule 6 is water.

Mol	Chain	Residues	Atoms		ZeroOcc	AltConf
6	A	8	Total	O	0	0
			8	8		
6	B	44	Total	O	0	0
			44	44		
6	C	6	Total	O	0	0
			6	6		
6	D	50	Total	O	0	0
			50	50		



T358	G377	Y362	V400	A418	M424	LEU	ALA	SER	SER	ALA	PRO	ASN	VAL	ARG
A378	R383	P401	T419	E420	G425	ALA	SER	SER	ALA	PRO	ASN	VAL	ARG	
K384	K384		T421	T421	G426									

## 4 Data and refinement statistics

Property	Value	Source
Space group	P 21 21 2	Depositor
Cell constants a, b, c, $\alpha$ , $\beta$ , $\gamma$	87.78Å 173.69Å 173.51Å 90.00° 90.00° 90.00°	Depositor
Resolution (Å)	48.33 – 2.60 48.33 – 2.60	Depositor EDS
% Data completeness (in resolution range)	99.8 (48.33-2.60) 99.6 (48.33-2.60)	Depositor EDS
$R_{merge}$	0.15	Depositor
$R_{sym}$	(Not available)	Depositor
$\langle I/\sigma(I) \rangle$ <sup>1</sup>	2.47 (at 2.61Å)	Xtrriage
Refinement program	PHENIX 1.15.2_3472, PHENIX 1.15.2_3472	Depositor
R, $R_{free}$	0.193 , 0.215 0.191 , 0.214	Depositor DCC
$R_{free}$ test set	3941 reflections (4.79%)	wwPDB-VP
Wilson B-factor (Å <sup>2</sup> )	34.1	Xtrriage
Anisotropy	0.134	Xtrriage
Bulk solvent $k_{sol}$ (e/Å <sup>3</sup> ), $B_{sol}$ (Å <sup>2</sup> )	0.35 , 7.7	EDS
L-test for twinning <sup>2</sup>	$\langle  L  \rangle = 0.42$ , $\langle L^2 \rangle = 0.25$	Xtrriage
Estimated twinning fraction	0.457 for -h,l,k	Xtrriage
$F_o, F_c$ correlation	0.95	EDS
Total number of atoms	13093	wwPDB-VP
Average B, all atoms (Å <sup>2</sup> )	33.0	wwPDB-VP

Xtrriage's analysis on translational NCS is as follows: *The analyses of the Patterson function reveals a significant off-origin peak that is 39.03 % of the origin peak, indicating pseudo-translational symmetry. The chance of finding a peak of this or larger height randomly in a structure without pseudo-translational symmetry is equal to 3.3743e-04.*

<sup>1</sup>Intensities estimated from amplitudes.

<sup>2</sup>Theoretical values of  $\langle |L| \rangle$ ,  $\langle L^2 \rangle$  for acentric reflections are 0.5, 0.333 respectively for untwinned datasets, and 0.375, 0.2 for perfectly twinned datasets.

## 5 Model quality [i](#)

### 5.1 Standard geometry [i](#)

Bond lengths and bond angles in the following residue types are not validated in this section: PLP, SO4, GOL

The Z score for a bond length (or angle) is the number of standard deviations the observed value is removed from the expected value. A bond length (or angle) with  $|Z| > 5$  is considered an outlier worth inspection. RMSZ is the root-mean-square of all Z scores of the bond lengths (or angles).

Mol	Chain	Bond lengths		Bond angles	
		RMSZ	# Z  >5	RMSZ	# Z  >5
1	A	0.11	0/3304	0.31	0/4498
1	B	0.13	0/3319	0.33	0/4518
1	C	0.13	0/3289	0.33	0/4477
1	D	0.13	0/3302	0.32	0/4494
All	All	0.13	0/13214	0.32	0/17987

There are no bond length outliers.

There are no bond angle outliers.

There are no chirality outliers.

There are no planarity outliers.

### 5.2 Too-close contacts [i](#)

In the following table, the Non-H and H(model) columns list the number of non-hydrogen atoms and hydrogen atoms in the chain respectively. The H(added) column lists the number of hydrogen atoms added and optimized by MolProbity. The Clashes column lists the number of clashes within the asymmetric unit, whereas Symm-Clashes lists symmetry-related clashes.

Mol	Chain	Non-H	H(model)	H(added)	Clashes	Symm-Clashes
1	A	3225	0	3202	32	0
1	B	3239	0	3211	35	0
1	C	3210	0	3189	23	0
1	D	3223	0	3200	26	0
2	A	16	0	8	1	0
2	B	16	0	8	1	0
2	C	15	0	7	1	0
2	D	15	0	7	1	0
3	B	10	0	5	0	0

*Continued on next page...*

*Continued from previous page...*

Mol	Chain	Non-H	H(model)	H(added)	Clashes	Symm-Clashes
4	B	5	0	0	0	0
4	D	5	0	0	1	0
5	B	6	0	8	2	0
6	A	8	0	0	0	0
6	B	44	0	0	1	0
6	C	6	0	0	0	0
6	D	50	0	0	0	0
All	All	13093	0	12845	108	0

The all-atom clashscore is defined as the number of clashes found per 1000 atoms (including hydrogen atoms). The all-atom clashscore for this structure is 4.

All (108) close contacts within the same asymmetric unit are listed below, sorted by their clash magnitude.

Atom-1	Atom-2	Interatomic distance (Å)	Clash overlap (Å)
1:B:25:LEU:HD11	1:B:409:GLY:HA2	1.71	0.73
1:D:237:LEU:HD23	1:D:249:PRO:HG2	1.71	0.71
1:B:285:LYS:NZ	1:D:106:ASP:OD1	2.25	0.69
1:A:363:VAL:HG13	1:A:373:VAL:HB	1.76	0.68
1:B:315:GLN:OE1	1:B:316:GLN:NE2	2.29	0.66
1:A:161:ASP:HB3	1:A:196:SER:HB3	1.78	0.64
1:A:69:TYR:HB2	1:C:38:LYS:HD3	1.79	0.64
1:A:112:MET:HA	1:A:123:TRP:HB2	1.78	0.64
1:A:7:SER:N	1:A:10:GLU:OE2	2.31	0.63
1:C:354:VAL:HG12	1:C:355:LEU:H	1.64	0.63
1:A:7:SER:HG	1:A:10:GLU:H	1.45	0.63
1:A:315:GLN:OE1	1:A:316:GLN:NE2	2.32	0.61
1:D:382:TYR:HB2	1:D:384:LYS:HD2	1.81	0.61
1:C:228:LEU:HD23	1:C:312:LEU:HD22	1.82	0.60
1:C:34:LEU:HD22	1:C:393:ILE:HG23	1.84	0.60
1:B:101:LEU:HA	1:B:104:MET:HE3	1.83	0.60
1:D:72:GLN:N	4:D:501:SO4:O2	2.30	0.60
1:D:123:TRP:HB3	1:D:130:ILE:HG13	1.84	0.60
1:C:131:LYS:HG2	1:C:152:GLU:HB3	1.82	0.59
1:D:338:ILE:HD12	1:D:418:ALA:HB2	1.85	0.58
1:C:123:TRP:HB3	1:C:130:ILE:HG13	1.87	0.57
1:C:112:MET:HA	1:C:123:TRP:HB2	1.87	0.56
1:D:336:SER:HB2	1:D:338:ILE:HG22	1.87	0.56
1:C:324:LEU:HD22	1:C:400:VAL:HG13	1.89	0.55
1:B:123:TRP:HB3	1:B:130:ILE:HG13	1.87	0.54
1:B:16:ALA:HA	1:B:19:GLN:HG3	1.90	0.54

*Continued on next page...*

*Continued from previous page...*

Atom-1	Atom-2	Interatomic distance (Å)	Clash overlap (Å)
1:B:99:SER:HB3	1:B:102:GLU:HB3	1.90	0.54
1:A:196:SER:O	1:A:200:VAL:HG23	2.08	0.54
1:A:123:TRP:HB3	1:A:130:ILE:HG13	1.91	0.53
1:B:313:ARG:HH22	5:B:504:GOL:H31	1.74	0.52
1:A:170:GLU:HG3	1:B:154:ILE:HD12	1.92	0.51
1:C:22:TYR:CE1	1:C:365:LEU:HG	2.46	0.51
1:D:36:ARG:HD2	1:D:38:LYS:HE2	1.92	0.51
1:B:161:ASP:HB3	1:B:196:SER:HB3	1.93	0.50
1:C:133:LEU:HD21	1:C:178:ILE:HD13	1.92	0.50
1:B:112:MET:HA	1:B:123:TRP:HB2	1.93	0.50
1:D:358:THR:HG22	1:D:421:THR:HG21	1.94	0.49
1:A:190:PRO:HB3	1:A:392:ARG:HD3	1.94	0.49
1:B:218:ASP:OD2	2:B:501:PLP:N1	2.47	0.48
1:A:135:PRO:HD3	1:A:181:MET:HE2	1.95	0.48
1:B:285:LYS:HG2	1:D:102:GLU:HG3	1.95	0.48
1:A:259:THR:HG21	1:A:297:HIS:CD2	2.48	0.48
1:B:33:ASP:HB3	1:B:36:ARG:CZ	2.44	0.47
1:B:130:ILE:HD12	1:B:179:LYS:HG3	1.96	0.47
1:A:186:VAL:HA	1:A:194:THR:HG23	1.96	0.47
1:A:375:GLU:HG3	1:A:378:ALA:HB2	1.95	0.47
1:B:300:PHE:O	5:B:504:GOL:O2	2.32	0.47
1:B:135:PRO:HD3	1:B:181:MET:HE2	1.96	0.47
1:C:420:GLU:O	1:C:424:ASN:ND2	2.48	0.47
1:D:140:ASP:HB3	1:D:378:ALA:O	2.14	0.47
1:D:338:ILE:CD1	1:D:418:ALA:HB2	2.45	0.46
1:C:223:VAL:HG23	1:C:311:MET:HE2	1.96	0.46
1:A:377:GLY:O	1:A:383:ARG:HA	2.15	0.46
1:A:33:ASP:HB3	1:A:36:ARG:CZ	2.46	0.46
1:A:345:LYS:NZ	1:B:5:SER:HB2	2.30	0.46
1:A:240:ALA:HB1	1:A:245:ASN:O	2.16	0.46
1:C:101:LEU:HA	1:C:104:MET:HE3	1.97	0.46
1:A:69:TYR:OH	2:C:501:PLP:O2P	2.27	0.46
1:A:134:CYS:HB3	1:A:143:PHE:CE1	2.51	0.45
1:B:324:LEU:HD22	1:B:400:VAL:HG13	1.98	0.45
1:C:382:TYR:HB2	1:C:384:LYS:HG3	1.98	0.45
1:B:106:ASP:OD1	1:D:285:LYS:HE2	2.17	0.45
1:C:365:LEU:HB3	1:C:413:CYS:HB3	1.99	0.45
1:B:69:TYR:OH	2:D:502:PLP:O1P	2.31	0.45
1:B:135:PRO:HD2	1:B:182:TRP:O	2.17	0.45
1:B:377:GLY:O	1:B:383:ARG:HA	2.17	0.45
1:D:130:ILE:HD12	1:D:179:LYS:HG3	1.98	0.44

*Continued on next page...*

*Continued from previous page...*

Atom-1	Atom-2	Interatomic distance (Å)	Clash overlap (Å)
1:A:107:ILE:O	1:A:111:SER:OG	2.32	0.44
1:A:133:LEU:HD21	1:A:178:ILE:HD13	1.99	0.44
1:C:130:ILE:HD12	1:C:179:LYS:HG3	1.99	0.44
1:A:135:PRO:HD2	1:A:182:TRP:O	2.18	0.44
1:B:69:TYR:HB2	1:D:38:LYS:HD2	1.99	0.44
1:A:218:ASP:OD2	2:A:501:PLP:N1	2.51	0.44
1:B:33:ASP:HB3	1:B:36:ARG:NH2	2.33	0.43
1:C:240:ALA:HB1	1:C:245:ASN:O	2.18	0.43
1:D:72:GLN:HB3	1:D:279:LEU:HD22	2.00	0.43
1:A:113:LEU:HD21	1:C:113:LEU:HD21	1.99	0.43
1:D:258:ILE:HA	1:D:311:MET:HE1	2.01	0.43
1:A:158:MET:HE1	1:A:195:TYR:HE1	1.84	0.43
1:D:341:TRP:HA	1:D:351:SER:O	2.18	0.43
1:A:185:PRO:HG3	1:A:217:TRP:CD1	2.54	0.43
1:D:377:GLY:O	1:D:383:ARG:HA	2.18	0.43
1:B:5:SER:O	1:B:5:SER:OG	2.35	0.43
1:B:189:ASN:HA	1:B:190:PRO:HA	1.87	0.43
1:C:135:PRO:HD2	1:C:182:TRP:O	2.19	0.43
1:B:25:LEU:CD1	1:B:409:GLY:HA2	2.46	0.42
1:B:240:ALA:HB1	1:B:245:ASN:O	2.18	0.42
1:D:338:ILE:HD12	1:D:418:ALA:CB	2.47	0.42
1:B:398:PRO:HD3	6:B:601:HOH:O	2.19	0.42
1:B:72:GLN:HB3	1:B:279:LEU:HD22	2.02	0.42
1:A:33:ASP:HB3	1:A:36:ARG:NH2	2.35	0.42
1:B:116:GLY:N	1:B:119:SER:OG	2.53	0.42
1:A:163:PRO:HB2	1:A:168:ILE:HD11	2.02	0.41
1:D:244:GLY:C	1:D:246:PRO:HD3	2.45	0.41
1:A:170:GLU:O	1:A:174:VAL:HG23	2.20	0.41
1:B:163:PRO:HB2	1:B:168:ILE:HD11	2.02	0.41
1:D:104:MET:HE2	1:D:104:MET:HB2	1.74	0.41
1:A:101:LEU:HA	1:A:104:MET:HE3	2.03	0.41
1:C:377:GLY:O	1:C:383:ARG:HA	2.20	0.41
1:B:258:ILE:HG23	1:B:311:MET:HE3	2.02	0.41
1:C:31:ALA:C	1:C:32:LEU:HD23	2.46	0.41
1:C:72:GLN:HB3	1:C:279:LEU:HD22	2.03	0.41
1:B:367:LYS:C	1:B:369:VAL:H	2.29	0.41
1:D:185:PRO:HG3	1:D:217:TRP:CD1	2.56	0.41
1:D:189:ASN:HA	1:D:190:PRO:HA	1.81	0.41
1:C:79:ARG:HD3	1:C:94:ILE:HA	2.03	0.41
1:D:420:GLU:O	1:D:424:ASN:HB2	2.21	0.40
1:D:400:VAL:HG22	1:D:401:PRO:HD3	2.04	0.40

There are no symmetry-related clashes.

## 5.3 Torsion angles [i](#)

### 5.3.1 Protein backbone [i](#)

In the following table, the Percentiles column shows the percent Ramachandran outliers of the chain as a percentile score with respect to all X-ray entries followed by that with respect to entries of similar resolution.

The Analysed column shows the number of residues for which the backbone conformation was analysed, and the total number of residues.

Mol	Chain	Analysed	Favoured	Allowed	Outliers	Percentiles	
1	A	417/435 (96%)	403 (97%)	14 (3%)	0	100	100
1	B	419/435 (96%)	402 (96%)	16 (4%)	1 (0%)	43	66
1	C	415/435 (95%)	402 (97%)	13 (3%)	0	100	100
1	D	417/435 (96%)	398 (95%)	19 (5%)	0	100	100
All	All	1668/1740 (96%)	1605 (96%)	62 (4%)	1 (0%)	48	70

All (1) Ramachandran outliers are listed below:

Mol	Chain	Res	Type
1	B	29	LYS

### 5.3.2 Protein sidechains [i](#)

In the following table, the Percentiles column shows the percent sidechain outliers of the chain as a percentile score with respect to all X-ray entries followed by that with respect to entries of similar resolution.

The Analysed column shows the number of residues for which the sidechain conformation was analysed, and the total number of residues.

Mol	Chain	Analysed	Rotameric	Outliers	Percentiles	
1	A	339/352 (96%)	339 (100%)	0	100	100
1	B	341/352 (97%)	341 (100%)	0	100	100
1	C	337/352 (96%)	337 (100%)	0	100	100
1	D	338/352 (96%)	338 (100%)	0	100	100
All	All	1355/1408 (96%)	1355 (100%)	0	100	100

There are no protein residues with a non-rotameric sidechain to report.

Sometimes sidechains can be flipped to improve hydrogen bonding and reduce clashes. All (15) such sidechains are listed below:

Mol	Chain	Res	Type
1	A	19	GLN
1	A	205	GLN
1	A	390	ASN
1	B	43	GLN
1	B	219	ASN
1	B	331	GLN
1	B	390	ASN
1	B	405	ASN
1	C	219	ASN
1	C	390	ASN
1	C	405	ASN
1	D	219	ASN
1	D	280	GLN
1	D	390	ASN
1	D	405	ASN

### 5.3.3 RNA [i](#)

There are no RNA molecules in this entry.

## 5.4 Non-standard residues in protein, DNA, RNA chains [i](#)

There are no non-standard protein/DNA/RNA residues in this entry.

## 5.5 Carbohydrates [i](#)

There are no oligosaccharides in this entry.

## 5.6 Ligand geometry [i](#)

8 ligands are modelled in this entry.

In the following table, the Counts columns list the number of bonds (or angles) for which Mogul statistics could be retrieved, the number of bonds (or angles) that are observed in the model and the number of bonds (or angles) that are defined in the Chemical Component Dictionary. The Link column lists molecule types, if any, to which the group is linked. The Z score for a bond length (or angle) is the number of standard deviations the observed value is removed from the

expected value. A bond length (or angle) with  $|Z| > 2$  is considered an outlier worth inspection. RMSZ is the root-mean-square of all Z scores of the bond lengths (or angles).

Mol	Type	Chain	Res	Link	Bond lengths			Bond angles		
					Counts	RMSZ	# Z  > 2	Counts	RMSZ	# Z  > 2
3	GLU	B	502	-	8,9,9	1.07	0	8,11,11	1.22	1 (12%)
2	PLP	D	502	1	15,15,16	2.38	5 (33%)	21,22,23	1.07	2 (9%)
2	PLP	C	501	1	15,15,16	2.41	5 (33%)	21,22,23	1.09	2 (9%)
5	GOL	B	504	-	5,5,5	1.02	0	5,5,5	1.05	0
2	PLP	B	501	-	16,16,16	1.21	2 (12%)	20,23,23	1.13	2 (10%)
2	PLP	A	501	-	16,16,16	1.25	2 (12%)	20,23,23	1.07	2 (10%)
4	SO4	B	503	-	4,4,4	0.23	0	6,6,6	0.09	0
4	SO4	D	501	-	4,4,4	0.22	0	6,6,6	0.08	0

In the following table, the Chirals column lists the number of chiral outliers, the number of chiral centers analysed, the number of these observed in the model and the number defined in the Chemical Component Dictionary. Similar counts are reported in the Torsion and Rings columns. '-' means no outliers of that kind were identified.

Mol	Type	Chain	Res	Link	Chirals	Torsions	Rings
3	GLU	B	502	-	-	3/9/9/9	-
2	PLP	D	502	1	-	3/6/6/8	0/1/1/1
2	PLP	C	501	1	-	3/6/6/8	0/1/1/1
5	GOL	B	504	-	-	4/4/4/4	-
2	PLP	B	501	-	-	5/8/8/8	0/1/1/1
2	PLP	A	501	-	-	4/8/8/8	0/1/1/1

All (14) bond length outliers are listed below:

Mol	Chain	Res	Type	Atoms	Z	Observed(Å)	Ideal(Å)
2	D	502	PLP	C4A-C4	5.30	1.62	1.51
2	C	501	PLP	C4A-C4	5.21	1.62	1.51
2	C	501	PLP	C2A-C2	3.77	1.56	1.50
2	D	502	PLP	C2A-C2	3.74	1.56	1.50
2	C	501	PLP	C5-C4	-3.55	1.36	1.40
2	D	502	PLP	C5-C4	-3.50	1.36	1.40
2	D	502	PLP	C6-N1	3.12	1.40	1.34
2	C	501	PLP	C6-N1	3.11	1.40	1.34
2	A	501	PLP	C2-N1	2.61	1.38	1.33
2	B	501	PLP	C2-N1	2.60	1.38	1.33
2	D	502	PLP	C5A-C5	2.11	1.56	1.50
2	C	501	PLP	C5A-C5	2.08	1.56	1.50

*Continued on next page...*

Continued from previous page...

Mol	Chain	Res	Type	Atoms	Z	Observed(Å)	Ideal(Å)
2	B	501	PLP	C6-N1	2.06	1.38	1.34
2	A	501	PLP	C6-N1	2.05	1.38	1.34

All (9) bond angle outliers are listed below:

Mol	Chain	Res	Type	Atoms	Z	Observed(°)	Ideal(°)
2	D	502	PLP	C6-C5-C4	2.58	120.22	118.10
2	C	501	PLP	C6-C5-C4	2.52	120.16	118.10
2	C	501	PLP	C5-C6-N1	-2.51	119.75	123.83
2	D	502	PLP	C5-C6-N1	-2.41	119.92	123.83
2	A	501	PLP	C5-C6-N1	-2.29	120.11	123.83
2	B	501	PLP	C5-C6-N1	-2.24	120.19	123.83
2	A	501	PLP	O4A-C4A-C4	-2.12	119.77	124.80
2	B	501	PLP	O4A-C4A-C4	-2.10	119.81	124.80
3	B	502	GLU	OE2-CD-CG	2.01	120.35	114.00

There are no chirality outliers.

All (22) torsion outliers are listed below:

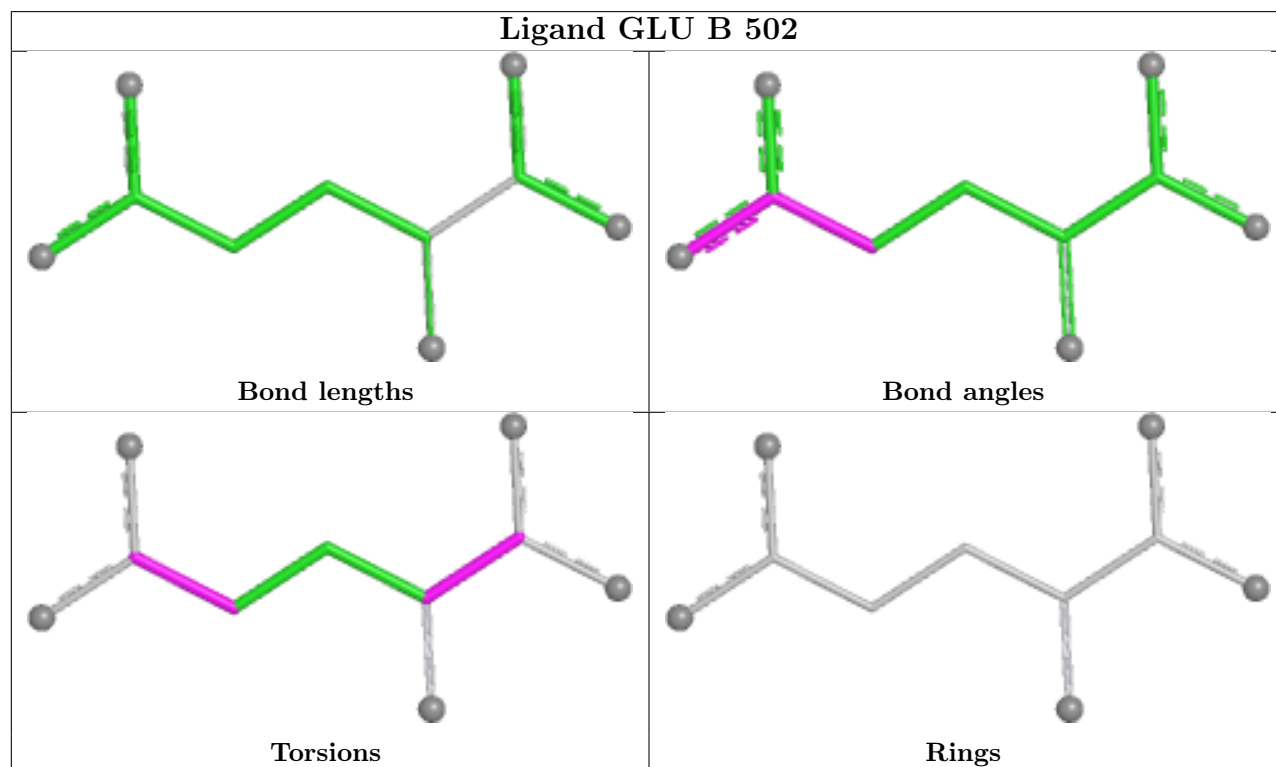
Mol	Chain	Res	Type	Atoms
2	A	501	PLP	C5A-O4P-P-O2P
2	A	501	PLP	C5A-O4P-P-O3P
2	B	501	PLP	C5A-O4P-P-O3P
2	D	502	PLP	C5A-O4P-P-O2P
2	D	502	PLP	C5A-O4P-P-O3P
5	B	504	GOL	O1-C1-C2-O2
2	A	501	PLP	C3-C4-C4A-O4A
2	B	501	PLP	C3-C4-C4A-O4A
5	B	504	GOL	O1-C1-C2-C3
5	B	504	GOL	C1-C2-C3-O3
5	B	504	GOL	O2-C2-C3-O3
2	B	501	PLP	C5-C4-C4A-O4A
2	A	501	PLP	C5A-O4P-P-O1P
2	B	501	PLP	C5A-O4P-P-O2P
2	C	501	PLP	C5A-O4P-P-O3P
2	B	501	PLP	C5A-O4P-P-O1P
2	C	501	PLP	C5A-O4P-P-O1P
3	B	502	GLU	OE1-CD-CG-CB
3	B	502	GLU	OE2-CD-CG-CB
2	C	501	PLP	C5A-O4P-P-O2P
2	D	502	PLP	C5A-O4P-P-O1P
3	B	502	GLU	OXT-C-CA-N

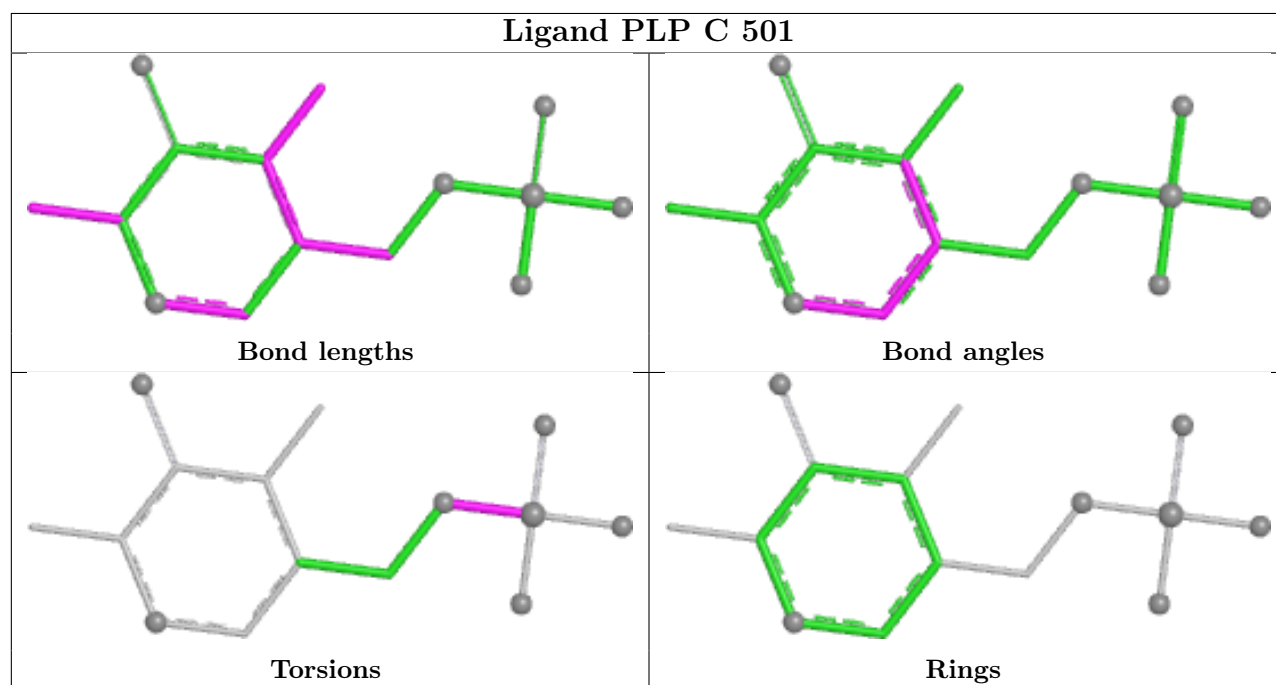
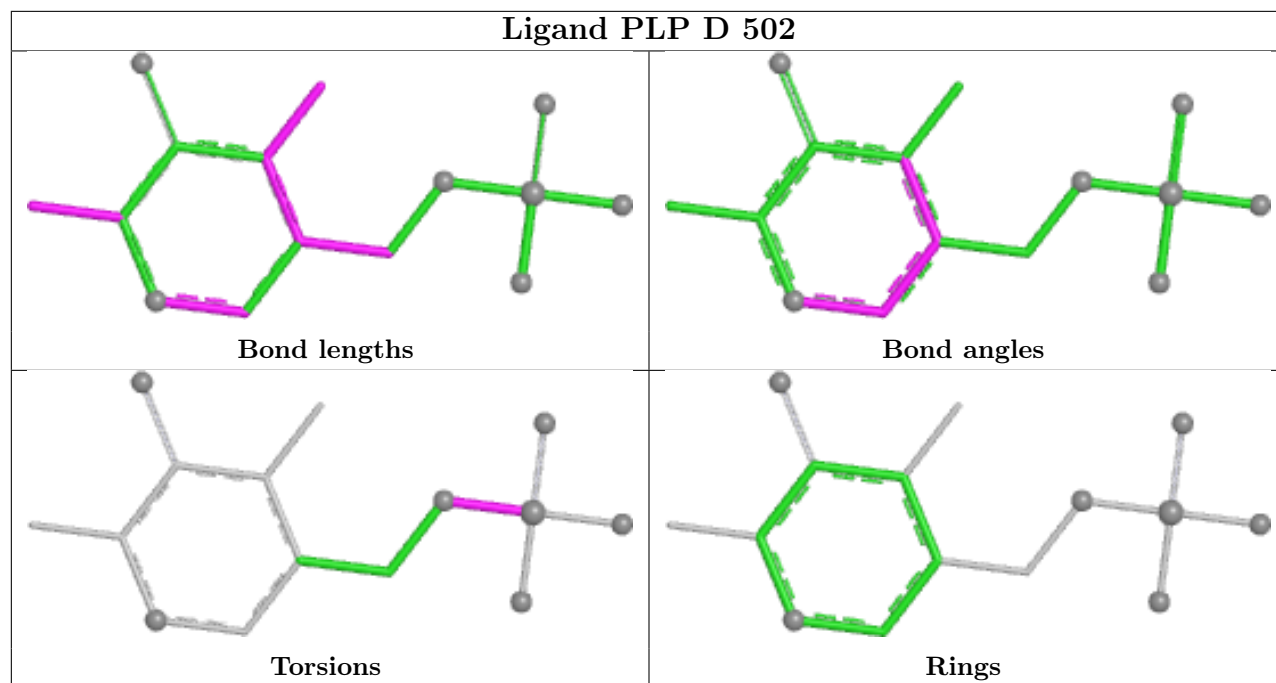
There are no ring outliers.

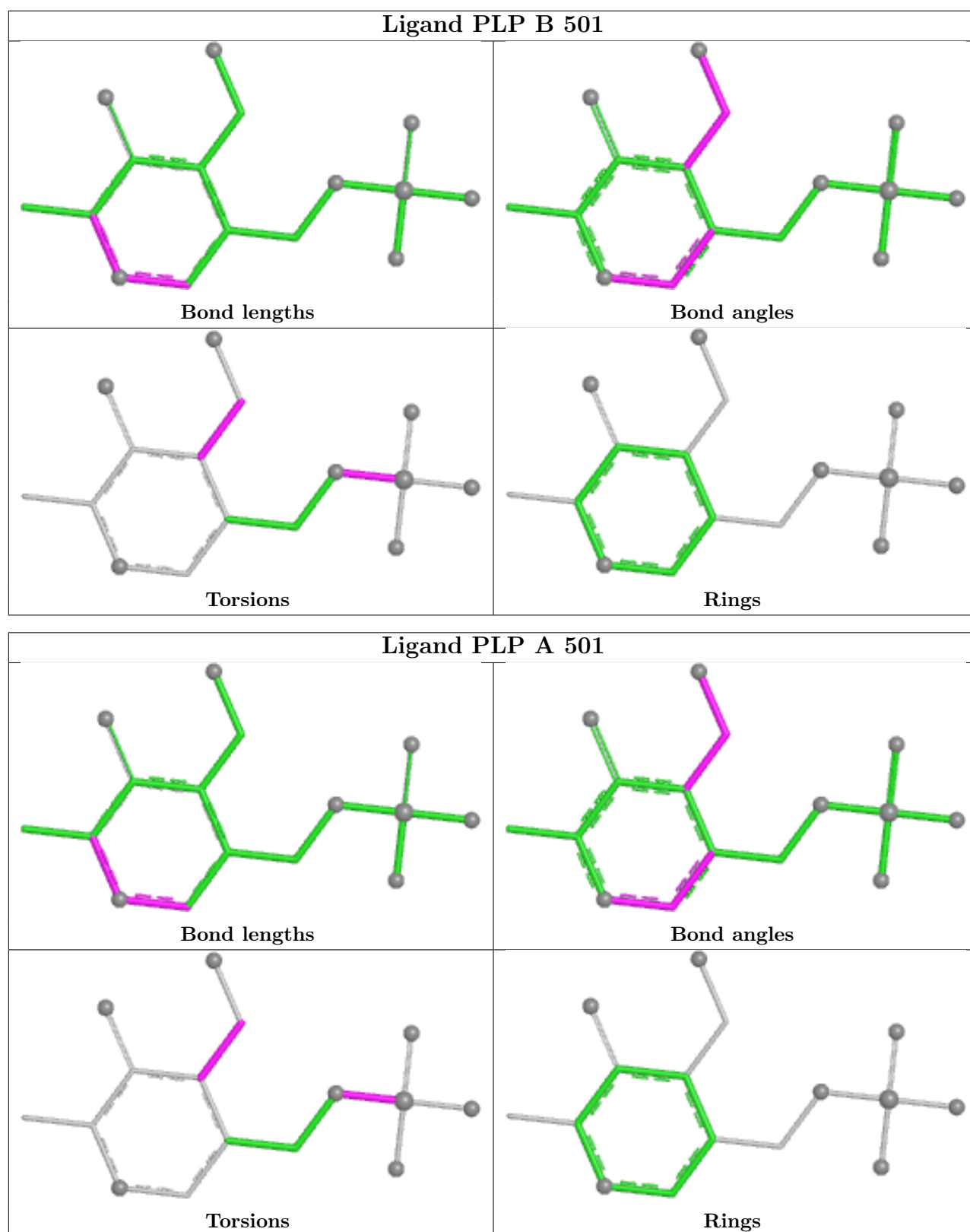
6 monomers are involved in 7 short contacts:

Mol	Chain	Res	Type	Clashes	Symm-Clashes
2	D	502	PLP	1	0
2	C	501	PLP	1	0
5	B	504	GOL	2	0
2	B	501	PLP	1	0
2	A	501	PLP	1	0
4	D	501	SO4	1	0

The following is a two-dimensional graphical depiction of Mogul quality analysis of bond lengths, bond angles, torsion angles, and ring geometry for all instances of the Ligand of Interest. In addition, ligands with molecular weight > 250 and outliers as shown on the validation Tables will also be included. For torsion angles, if less than 5% of the Mogul distribution of torsion angles is within 10 degrees of the torsion angle in question, then that torsion angle is considered an outlier. Any bond that is central to one or more torsion angles identified as an outlier by Mogul will be highlighted in the graph. For rings, the root-mean-square deviation (RMSD) between the ring in question and similar rings identified by Mogul is calculated over all ring torsion angles. If the average RMSD is greater than 60 degrees and the minimal RMSD between the ring in question and any Mogul-identified rings is also greater than 60 degrees, then that ring is considered an outlier. The outliers are highlighted in purple. The color gray indicates Mogul did not find sufficient equivalents in the CSD to analyse the geometry.







## 5.7 Other polymers [i](#)

There are no such residues in this entry.

## 5.8 Polymer linkage issues

There are no chain breaks in this entry.

## 6 Fit of model and data [i](#)

### 6.1 Protein, DNA and RNA chains [i](#)

In the following table, the column labelled ‘#RSRZ> 2’ contains the number (and percentage) of RSRZ outliers, followed by percent RSRZ outliers for the chain as percentile scores relative to all X-ray entries and entries of similar resolution. The OWAB column contains the minimum, median, 95<sup>th</sup> percentile and maximum values of the occupancy-weighted average B-factor per residue. The column labelled ‘Q< 0.9’ lists the number of (and percentage) of residues with an average occupancy less than 0.9.

Mol	Chain	Analysed	<RSRZ>	#RSRZ>2	OWAB(Å <sup>2</sup> )	Q<0.9
1	A	419/435 (96%)	-1.68	0 100 100	19, 35, 53, 70	0
1	B	421/435 (96%)	-1.78	0 100 100	10, 22, 53, 75	0
1	C	417/435 (95%)	-1.59	0 100 100	24, 43, 68, 75	0
1	D	419/435 (96%)	-1.78	0 100 100	12, 22, 47, 60	0
All	All	1676/1740 (96%)	-1.71	0 100 100	10, 32, 62, 75	0

There are no RSRZ outliers to report.

### 6.2 Non-standard residues in protein, DNA, RNA chains [i](#)

There are no non-standard protein/DNA/RNA residues in this entry.

### 6.3 Carbohydrates [i](#)

There are no oligosaccharides in this entry.

### 6.4 Ligands [i](#)

In the following table, the Atoms column lists the number of modelled atoms in the group and the number defined in the chemical component dictionary. The B-factors column lists the minimum, median, 95<sup>th</sup> percentile and maximum values of B factors of atoms in the group. The column labelled ‘Q< 0.9’ lists the number of atoms with occupancy less than 0.9.

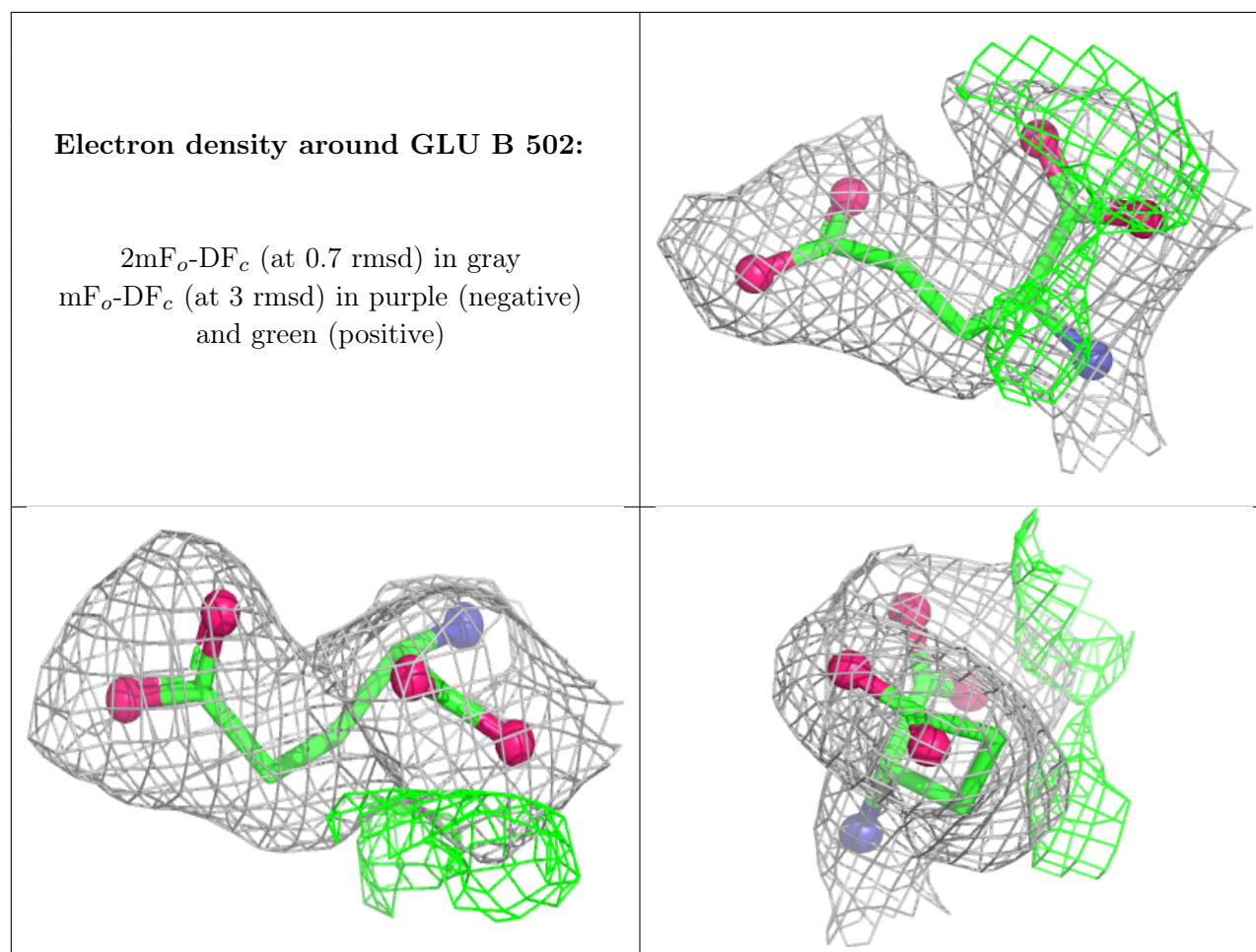
Mol	Type	Chain	Res	Atoms	RSCC	RSR	B-factors(Å <sup>2</sup> )	Q<0.9
3	GLU	B	502	10/10	0.99	0.03	18,27,29,32	0
4	SO4	D	501	5/5	0.99	0.05	39,43,47,49	0
2	PLP	C	501	15/16	1.00	0.03	32,43,48,54	0
2	PLP	D	502	15/16	1.00	0.02	12,19,24,24	0

*Continued on next page...*

Continued from previous page...

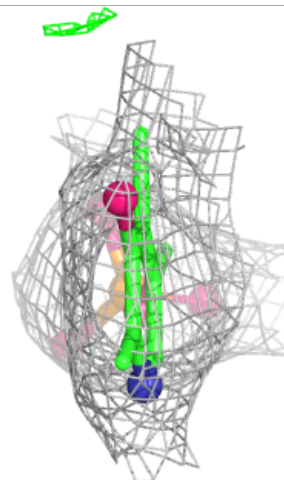
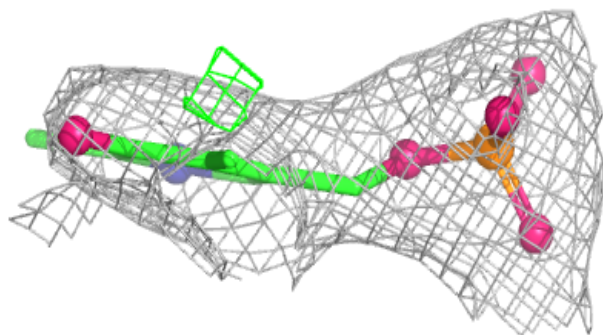
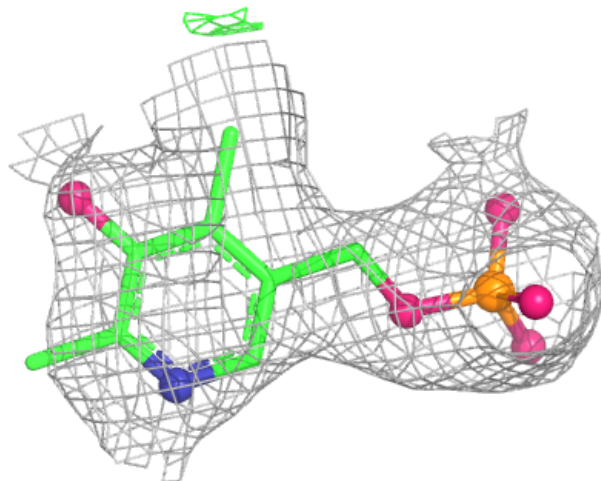
Mol	Type	Chain	Res	Atoms	RSCC	RSR	B-factors( $\text{\AA}^2$ )	Q<0.9
2	PLP	A	501	16/16	1.00	0.03	23,30,37,38	0
4	SO4	B	503	5/5	1.00	0.03	22,41,49,51	0
2	PLP	B	501	16/16	1.00	0.02	10,15,22,23	0
5	GOL	B	504	6/6	1.00	0.03	12,15,17,24	0

The following is a graphical depiction of the model fit to experimental electron density of all instances of the Ligand of Interest. In addition, ligands with molecular weight > 250 and outliers as shown on the geometry validation Tables will also be included. Each fit is shown from different orientation to approximate a three-dimensional view.



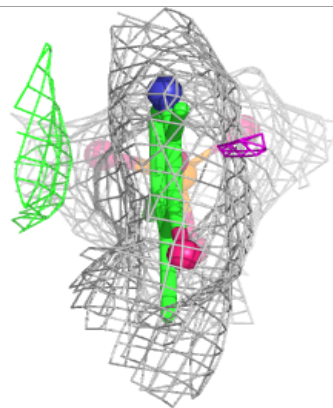
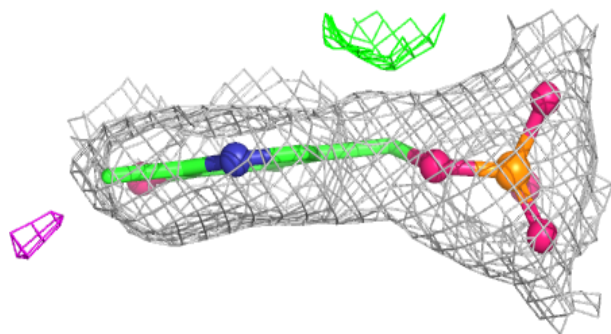
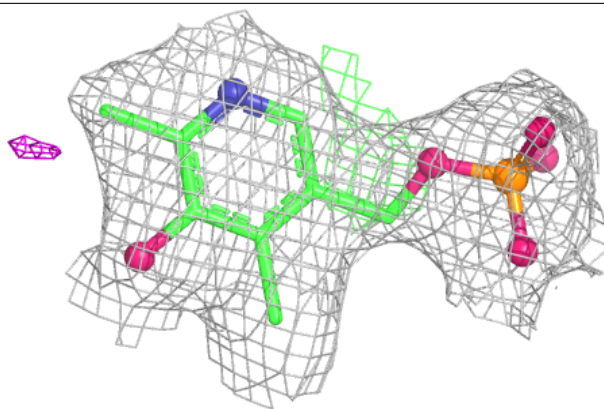
**Electron density around PLP C 501:**

$2mF_o-DF_c$  (at 0.7 rmsd) in gray  
 $mF_o-DF_c$  (at 3 rmsd) in purple (negative)  
and green (positive)



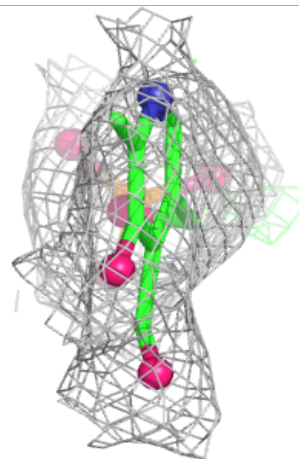
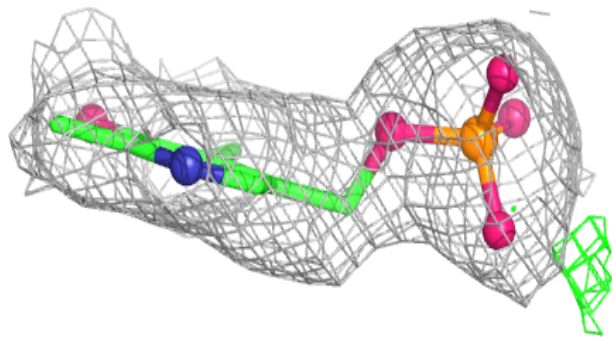
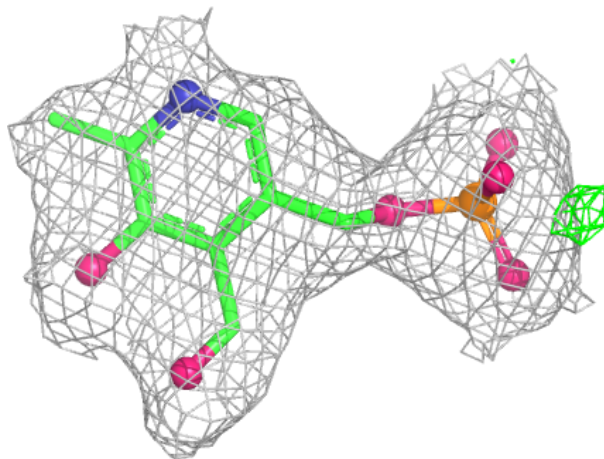
**Electron density around PLP D 502:**

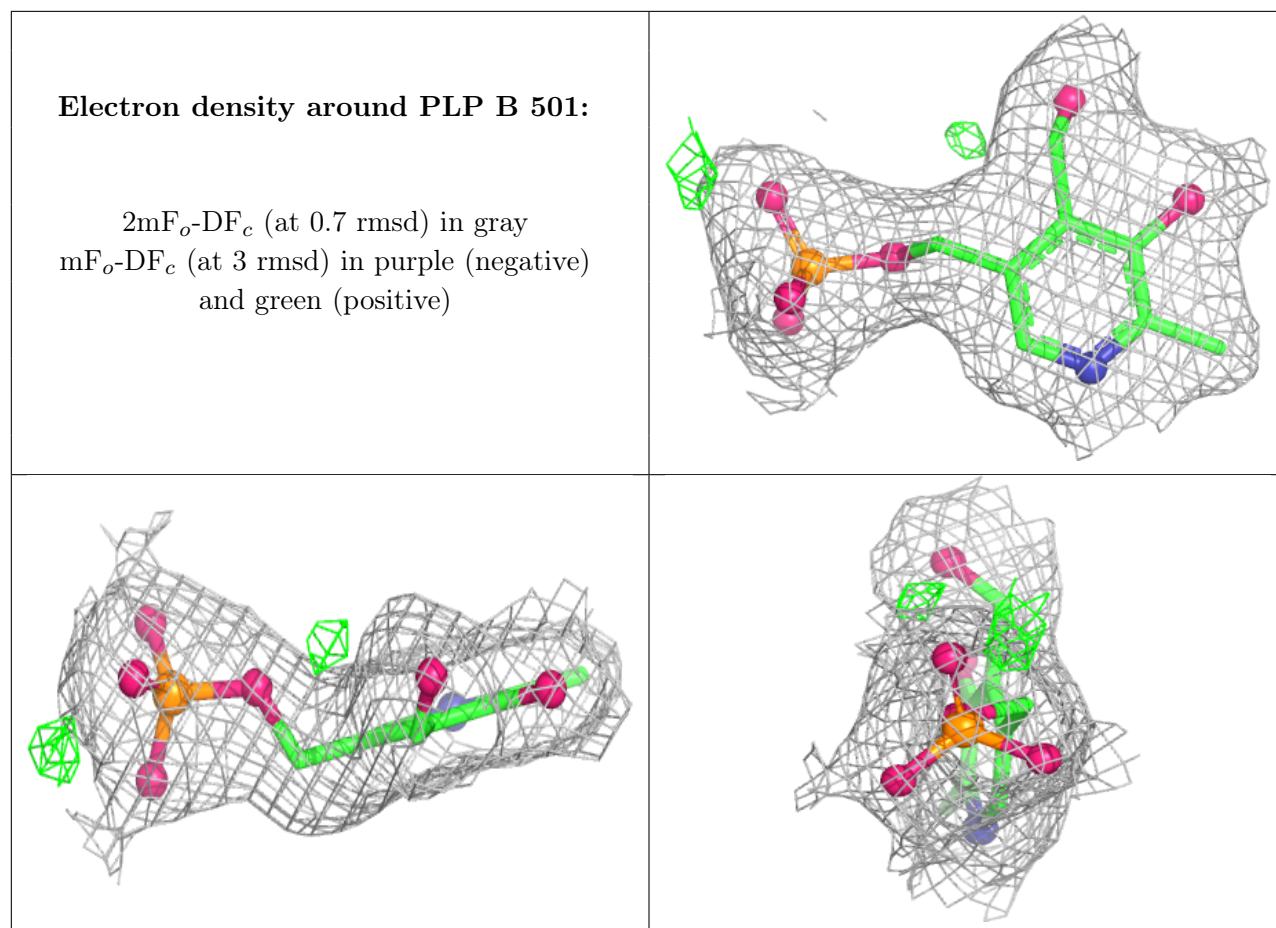
$2mF_o-DF_c$  (at 0.7 rmsd) in gray  
 $mF_o-DF_c$  (at 3 rmsd) in purple (negative)  
and green (positive)



**Electron density around PLP A 501:**

$2mF_o-DF_c$  (at 0.7 rmsd) in gray  
 $mF_o-DF_c$  (at 3 rmsd) in purple (negative)  
and green (positive)





## 6.5 Other polymers [i](#)

There are no such residues in this entry.