



## Full wwPDB EM Validation Report ⓘ

May 19, 2024 – 07:59 am BST

PDB ID : 6RWA  
EMDB ID : EMD-10036  
Title : Cryo-EM structure of Photorhabdus luminescens TcdA4  
Authors : Roderer, D.; Leidreiter, F.; Gatsogiannis, C.; Meusch, D.; Benz, R.; Raunser, S.  
Deposited on : 2019-06-04  
Resolution : 4.00 Å(reported)  
Based on initial model : 1VW1

This is a Full wwPDB EM Validation Report for a publicly released PDB entry.

We welcome your comments at [validation@mail.wwpdb.org](mailto:validation@mail.wwpdb.org)

A user guide is available at

<https://www.wwpdb.org/validation/2017/EMValidationReportHelp>

with specific help available everywhere you see the ⓘ symbol.

The types of validation reports are described at

<http://www.wwpdb.org/validation/2017/FAQs#types>.

---

The following versions of software and data (see [references ⓘ](#)) were used in the production of this report:

EMDB validation analysis : 0.0.1.dev92  
MolProbity : 4.02b-467  
Percentile statistics : 20191225.v01 (using entries in the PDB archive December 25th 2019)  
MapQ : 1.9.13  
Ideal geometry (proteins) : Engh & Huber (2001)  
Ideal geometry (DNA, RNA) : Parkinson et al. (1996)  
Validation Pipeline (wwPDB-VP) : 2.36.2

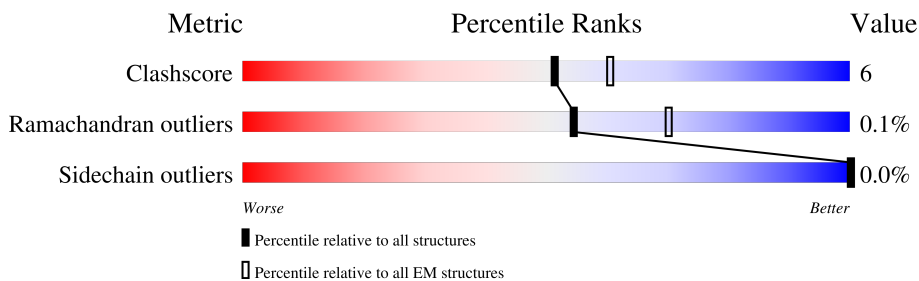
# 1 Overall quality at a glance

The following experimental techniques were used to determine the structure:

*ELECTRON MICROSCOPY*

The reported resolution of this entry is 4.00 Å.

Percentile scores (ranging between 0-100) for global validation metrics of the entry are shown in the following graphic. The table shows the number of entries on which the scores are based.



Metric	Whole archive (#Entries)	EM structures (#Entries)
Clashscore	158937	4297
Ramachandran outliers	154571	4023
Sidechain outliers	154315	3826

The table below summarises the geometric issues observed across the polymeric chains and their fit to the map. The red, orange, yellow and green segments of the bar indicate the fraction of residues that contain outliers for  $\geq 3$ , 2, 1 and 0 types of geometric quality criteria respectively. A grey segment represents the fraction of residues that are not modelled. The numeric value for each fraction is indicated below the corresponding segment, with a dot representing fractions  $\leq 5\%$ . The upper red bar (where present) indicates the fraction of residues that have poor fit to the EM map (all-atom inclusion  $< 40\%$ ). The numeric value is given above the bar.

Mol	Chain	Length	Quality of chain
1	A	2381	
1	B	2381	
1	C	2381	
1	D	2381	
1	E	2381	

## 2 Entry composition

There is only 1 type of molecule in this entry. The entry contains 94565 atoms, of which 0 are hydrogens and 0 are deuteriums.

In the tables below, the AltConf column contains the number of residues with at least one atom in alternate conformation and the Trace column contains the number of residues modelled with at most 2 atoms.

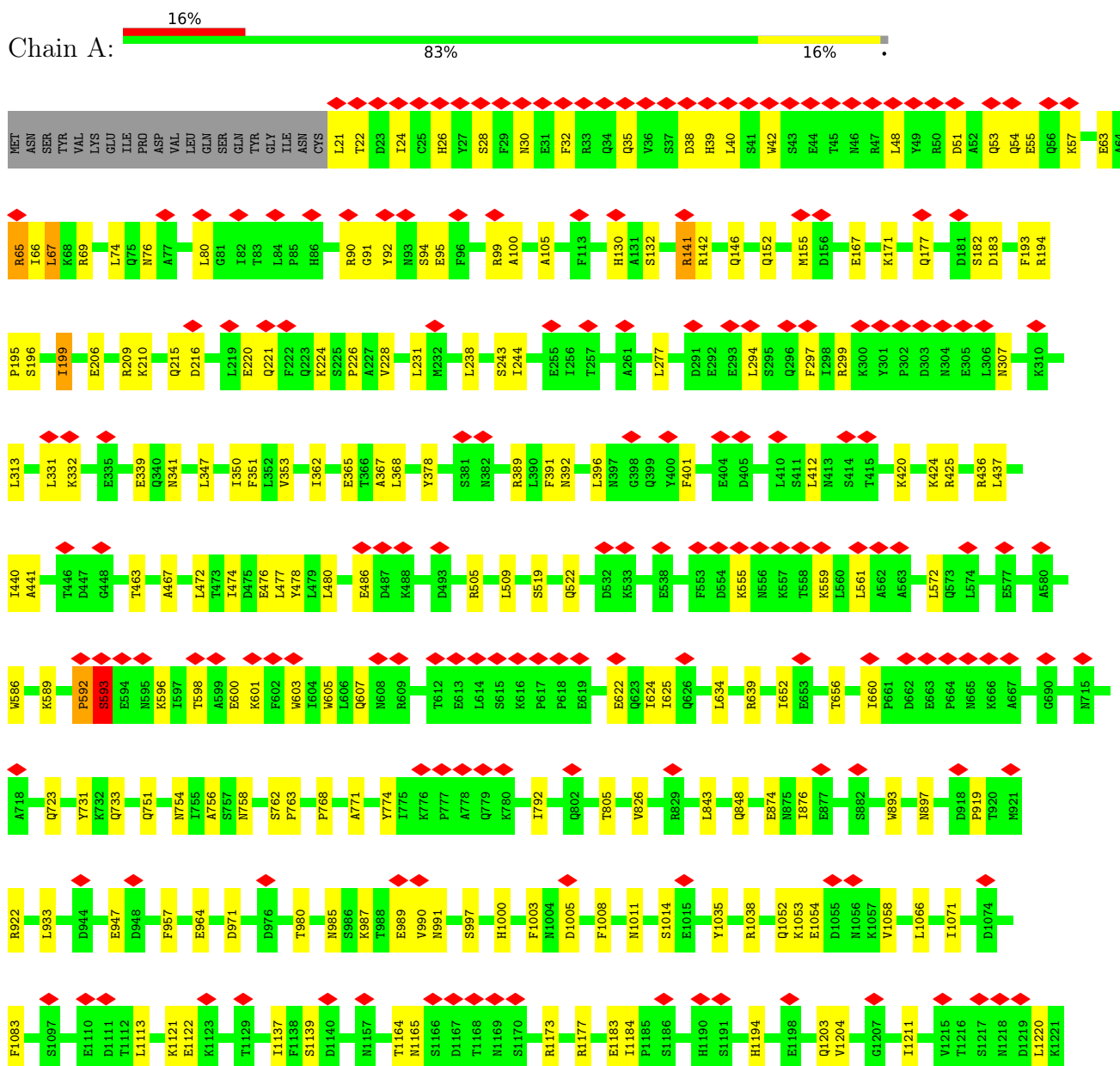
- Molecule 1 is a protein called TcdA4.

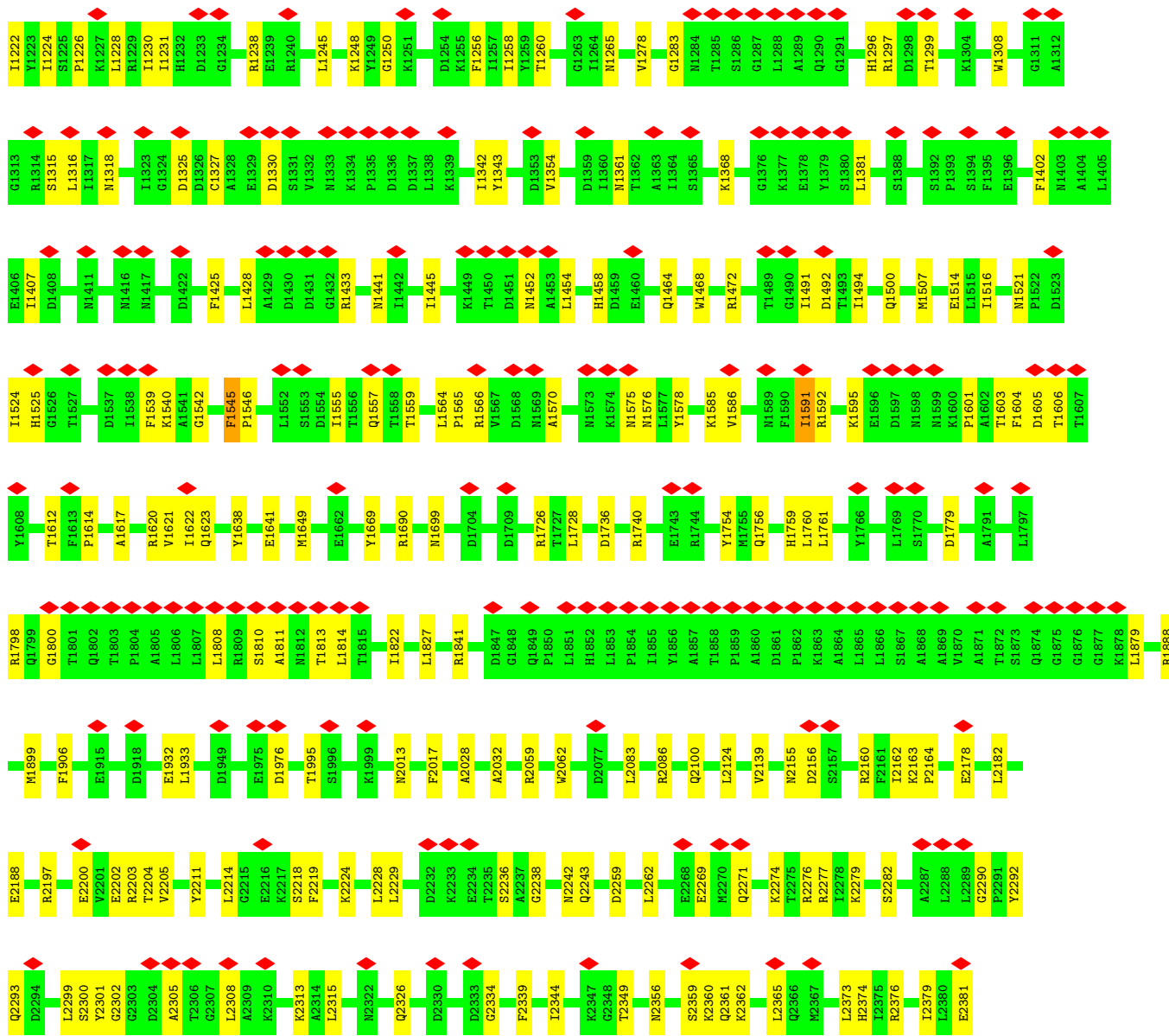
Mol	Chain	Residues	Atoms					AltConf	Trace
			Total	C	N	O	S		
1	A	2361	18913	11991	3214	3649	59	0	0
1	B	2361	18913	11991	3214	3649	59	0	0
1	C	2361	18913	11991	3214	3649	59	0	0
1	D	2361	18913	11991	3214	3649	59	0	0
1	E	2361	18913	11991	3214	3649	59	0	0

### 3 Residue-property plots

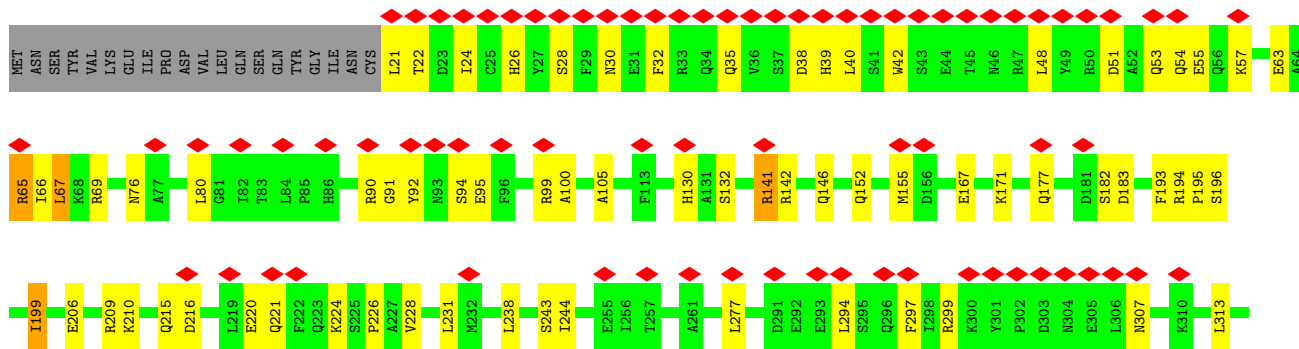
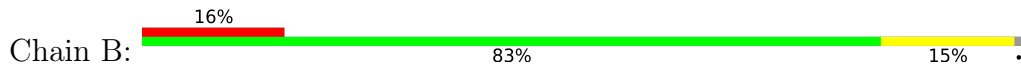
These plots are drawn for all protein, RNA, DNA and oligosaccharide chains in the entry. The first graphic for a chain summarises the proportions of the various outlier classes displayed in the second graphic. The second graphic shows the sequence view annotated by issues in geometry and atom inclusion in map density. Residues are color-coded according to the number of geometric quality criteria for which they contain at least one outlier: green = 0, yellow = 1, orange = 2 and red = 3 or more. A red diamond above a residue indicates a poor fit to the EM map for this residue (all-atom inclusion < 40%). Stretches of 2 or more consecutive residues without any outlier are shown as a green connector. Residues present in the sample, but not in the model, are shown in grey.

- Molecule 1: TcdA4



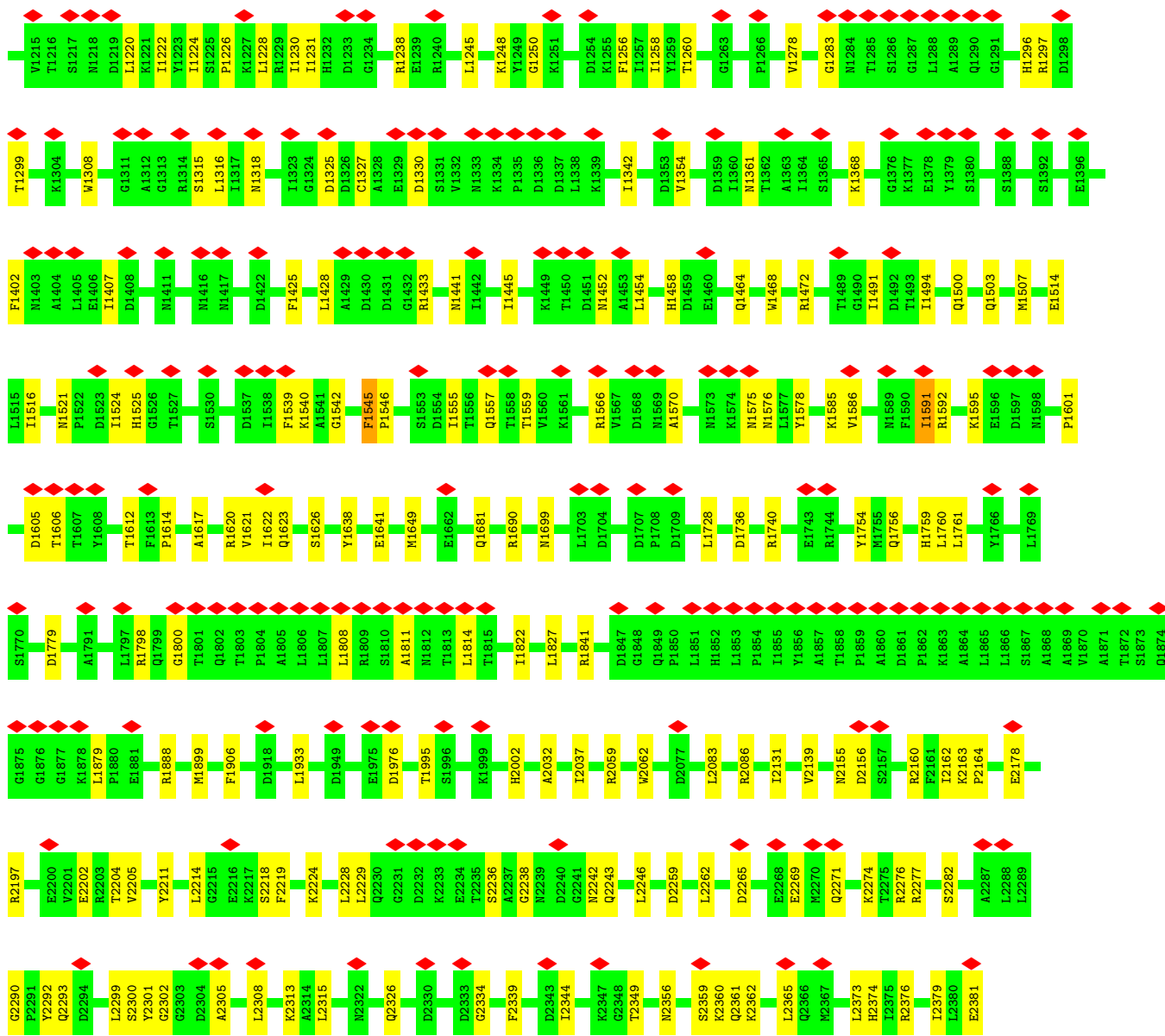


• Molecule 1: TcdA4

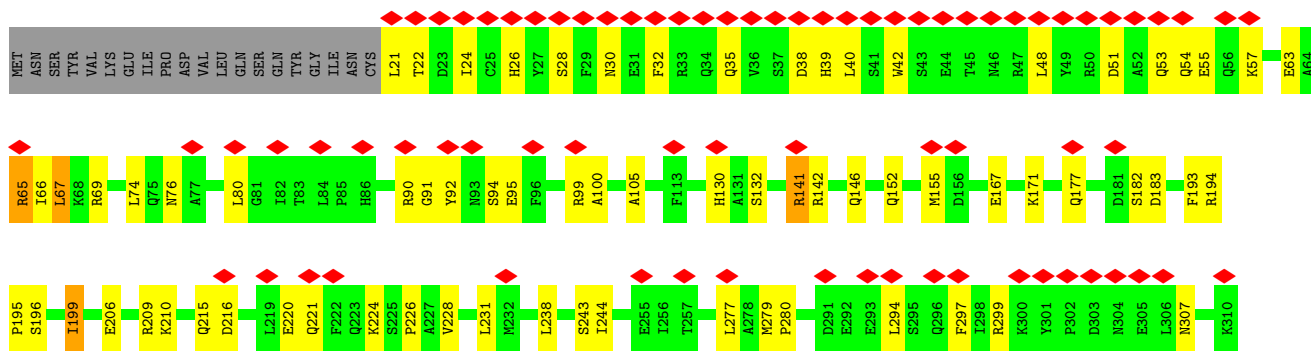
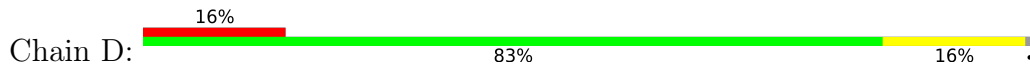




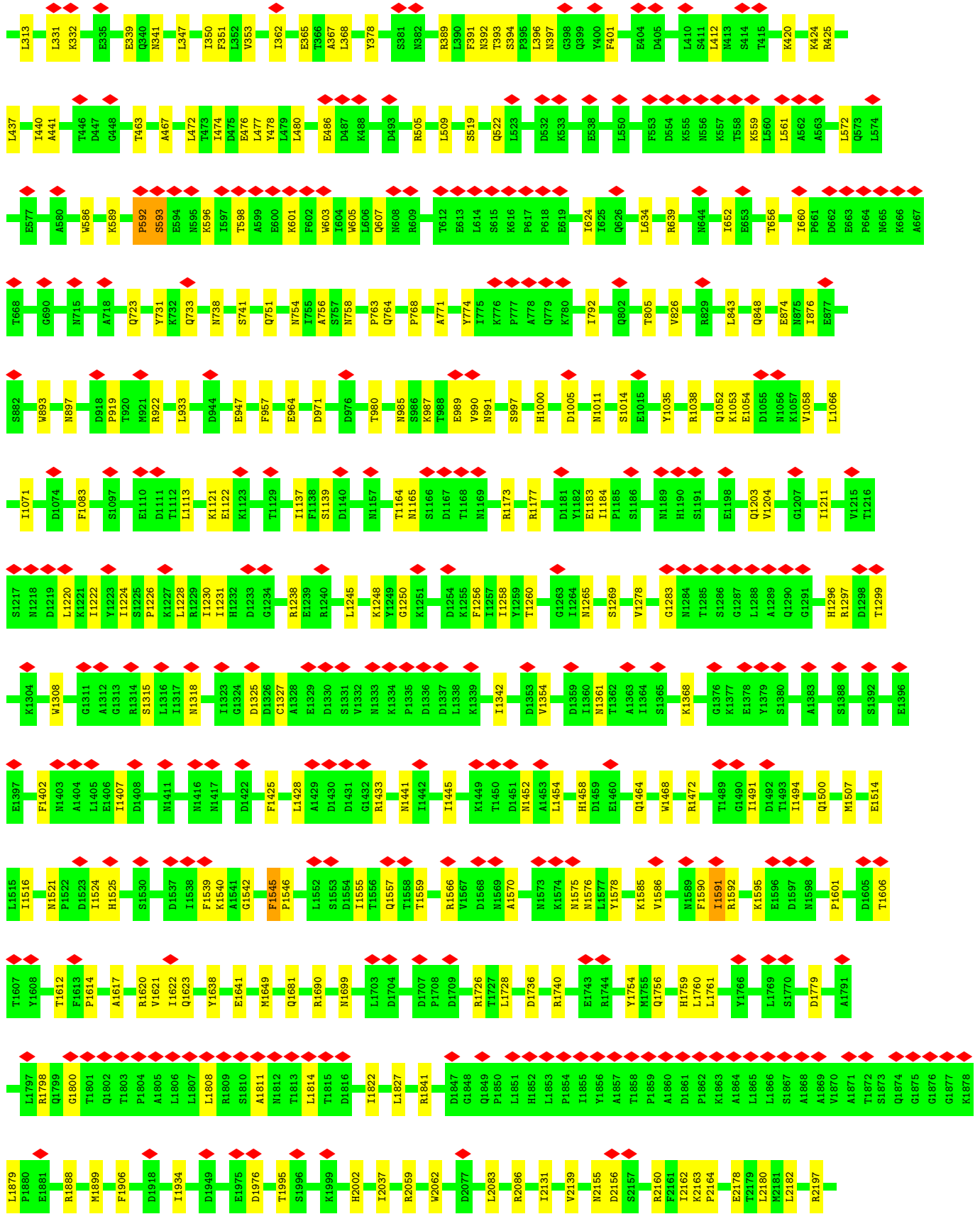


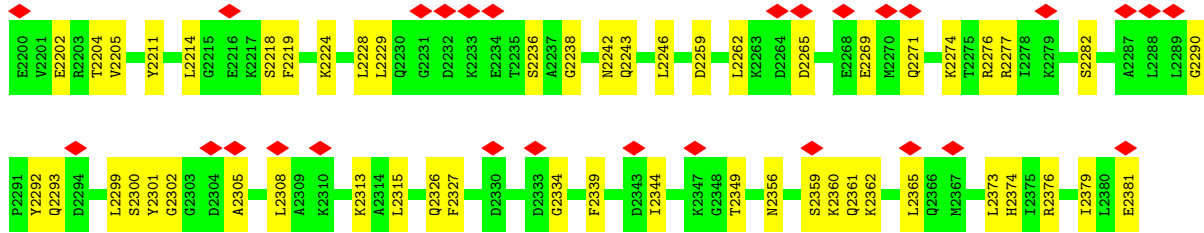


● Molecule 1: TcdA4

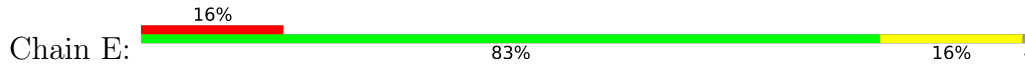


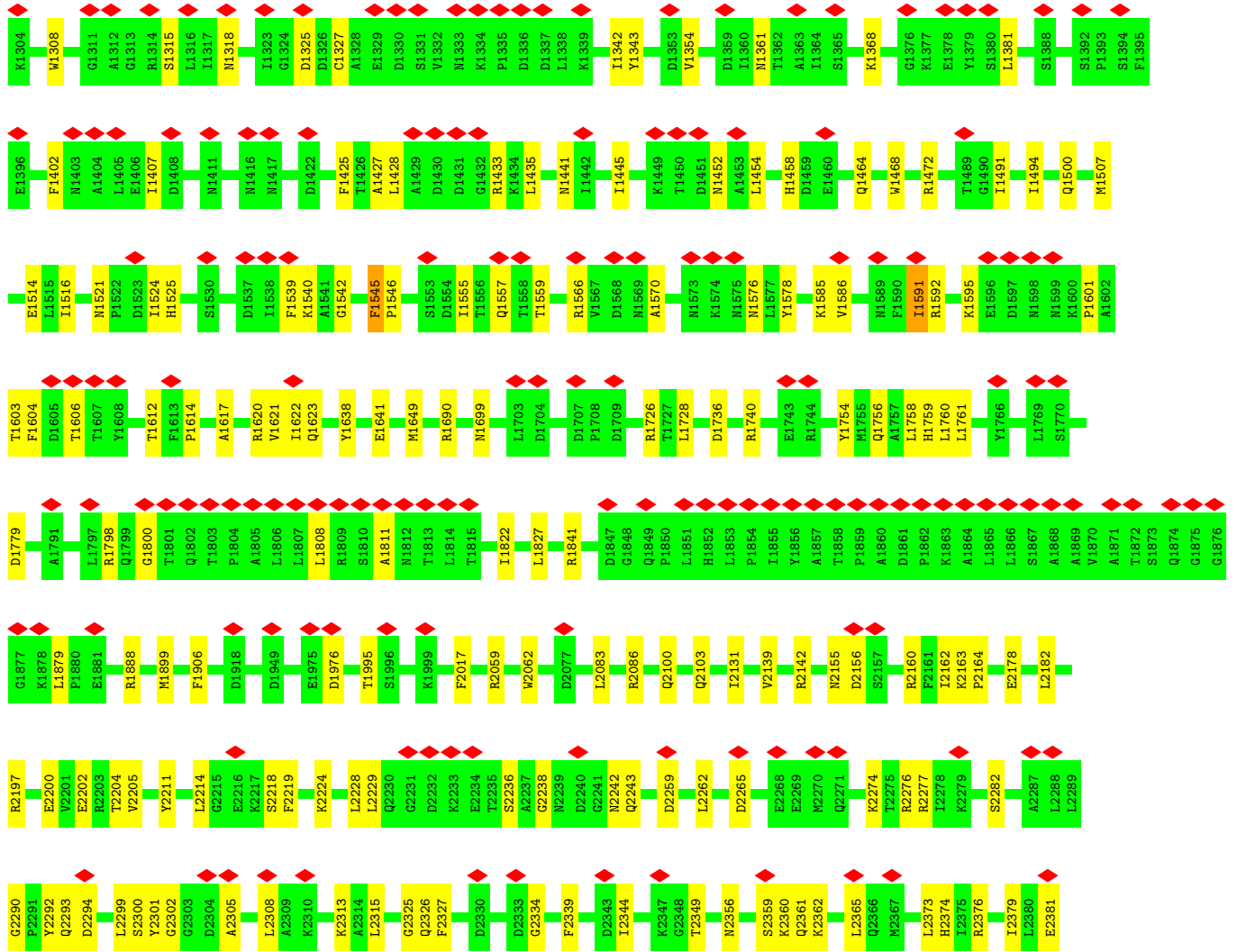






• Molecule 1: TcdA4





## 4 Experimental information

Property	Value	Source
EM reconstruction method	SINGLE PARTICLE	Depositor
Imposed symmetry	POINT, C5	Depositor
Number of particles used	35857	Depositor
Resolution determination method	FSC 0.143 CUT-OFF	Depositor
CTF correction method	PHASE FLIPPING AND AMPLITUDE CORRECTION	Depositor
Microscope	FEI TITAN KRIOS	Depositor
Voltage (kV)	300	Depositor
Electron dose ( $e^-/\text{\AA}^2$ )	30.7	Depositor
Minimum defocus (nm)	Not provided	
Maximum defocus (nm)	Not provided	
Magnification	Not provided	
Image detector	FEI FALCON II (4k x 4k)	Depositor
Maximum map value	0.111	Depositor
Minimum map value	-0.045	Depositor
Average map value	0.000	Depositor
Map value standard deviation	0.004	Depositor
Recommended contour level	0.028	Depositor
Map size (Å)	448.0, 448.0, 448.0	wwPDB
Map dimensions	400, 400, 400	wwPDB
Map angles (°)	90.0, 90.0, 90.0	wwPDB
Pixel spacing (Å)	1.12, 1.12, 1.12	Depositor

## 5 Model quality [i](#)

### 5.1 Standard geometry [i](#)

The Z score for a bond length (or angle) is the number of standard deviations the observed value is removed from the expected value. A bond length (or angle) with  $|Z| > 5$  is considered an outlier worth inspection. RMSZ is the root-mean-square of all Z scores of the bond lengths (or angles).

Mol	Chain	Bond lengths		Bond angles	
		RMSZ	# Z  >5	RMSZ	# Z  >5
1	A	0.41	0/19309	0.57	5/26207 (0.0%)
1	B	0.41	0/19309	0.57	5/26207 (0.0%)
1	C	0.41	0/19309	0.57	5/26207 (0.0%)
1	D	0.41	0/19309	0.57	5/26207 (0.0%)
1	E	0.41	0/19309	0.57	4/26207 (0.0%)
All	All	0.41	0/96545	0.57	24/131035 (0.0%)

Chiral center outliers are detected by calculating the chiral volume of a chiral center and verifying if the center is modelled as a planar moiety or with the opposite hand. A planarity outlier is detected by checking planarity of atoms in a peptide group, atoms in a mainchain group or atoms of a sidechain that are expected to be planar.

Mol	Chain	#Chirality outliers	#Planarity outliers
1	A	0	16
1	B	0	16
1	C	0	16
1	D	0	16
1	E	0	16
All	All	0	80

There are no bond length outliers.

All (24) bond angle outliers are listed below:

Mol	Chain	Res	Type	Atoms	Z	Observed(°)	Ideal(°)
1	B	80	LEU	CA-CB-CG	6.11	129.34	115.30
1	E	80	LEU	CA-CB-CG	6.09	129.31	115.30
1	D	80	LEU	CA-CB-CG	6.09	129.31	115.30
1	C	80	LEU	CA-CB-CG	6.08	129.29	115.30
1	A	80	LEU	CA-CB-CG	6.06	129.24	115.30
1	B	199	ILE	C-N-CD	-5.91	107.59	120.60
1	C	199	ILE	C-N-CD	-5.90	107.62	120.60
1	E	199	ILE	C-N-CD	-5.90	107.63	120.60

*Continued on next page...*

*Continued from previous page...*

Mol	Chain	Res	Type	Atoms	Z	Observed(°)	Ideal(°)
1	A	199	ILE	C-N-CD	-5.89	107.63	120.60
1	D	199	ILE	C-N-CD	-5.88	107.66	120.60
1	E	67	LEU	CA-CB-CG	5.60	128.17	115.30
1	B	67	LEU	CA-CB-CG	5.59	128.15	115.30
1	A	67	LEU	CA-CB-CG	5.58	128.13	115.30
1	C	67	LEU	CA-CB-CG	5.58	128.13	115.30
1	D	67	LEU	CA-CB-CG	5.56	128.09	115.30
1	B	1591	ILE	CG1-CB-CG2	-5.46	99.38	111.40
1	D	1591	ILE	CG1-CB-CG2	-5.46	99.39	111.40
1	E	1591	ILE	CG1-CB-CG2	-5.46	99.40	111.40
1	C	1591	ILE	CG1-CB-CG2	-5.45	99.40	111.40
1	A	1591	ILE	CG1-CB-CG2	-5.44	99.43	111.40
1	A	74	LEU	CA-CB-CG	5.02	126.84	115.30
1	D	74	LEU	CA-CB-CG	5.02	126.84	115.30
1	C	74	LEU	CA-CB-CG	5.01	126.83	115.30
1	B	199	ILE	C-N-CA	5.00	143.01	122.00

There are no chirality outliers.

All (80) planarity outliers are listed below:

Mol	Chain	Res	Type	Group
1	A	105	ALA	Peptide
1	A	1053	LYS	Peptide
1	A	1054	GLU	Peptide
1	A	1283	GLY	Peptide
1	A	141	ARG	Peptide
1	A	142	ARG	Peptide
1	A	1545	PHE	Peptide
1	A	1591	ILE	Peptide
1	A	1606	THR	Peptide
1	A	1620	ARG	Peptide
1	A	194	ARG	Peptide
1	A	1995	THR	Peptide
1	A	593	SER	Peptide
1	A	733	GLN	Peptide
1	A	989	GLU	Peptide
1	A	990	VAL	Peptide
1	B	105	ALA	Peptide
1	B	1053	LYS	Peptide
1	B	1054	GLU	Peptide
1	B	1283	GLY	Peptide
1	B	141	ARG	Peptide

*Continued on next page...*

*Continued from previous page...*

<b>Mol</b>	<b>Chain</b>	<b>Res</b>	<b>Type</b>	<b>Group</b>
1	B	142	ARG	Peptide
1	B	1545	PHE	Peptide
1	B	1591	ILE	Peptide
1	B	1606	THR	Peptide
1	B	1620	ARG	Peptide
1	B	194	ARG	Peptide
1	B	1995	THR	Peptide
1	B	593	SER	Peptide
1	B	733	GLN	Peptide
1	B	989	GLU	Peptide
1	B	990	VAL	Peptide
1	C	105	ALA	Peptide
1	C	1053	LYS	Peptide
1	C	1054	GLU	Peptide
1	C	1283	GLY	Peptide
1	C	141	ARG	Peptide
1	C	142	ARG	Peptide
1	C	1545	PHE	Peptide
1	C	1591	ILE	Peptide
1	C	1606	THR	Peptide
1	C	1620	ARG	Peptide
1	C	194	ARG	Peptide
1	C	1995	THR	Peptide
1	C	593	SER	Peptide
1	C	733	GLN	Peptide
1	C	989	GLU	Peptide
1	C	990	VAL	Peptide
1	D	105	ALA	Peptide
1	D	1053	LYS	Peptide
1	D	1054	GLU	Peptide
1	D	1283	GLY	Peptide
1	D	141	ARG	Peptide
1	D	142	ARG	Peptide
1	D	1545	PHE	Peptide
1	D	1591	ILE	Peptide
1	D	1606	THR	Peptide
1	D	1620	ARG	Peptide
1	D	194	ARG	Peptide
1	D	1995	THR	Peptide
1	D	593	SER	Peptide
1	D	733	GLN	Peptide
1	D	989	GLU	Peptide

*Continued on next page...*

*Continued from previous page...*

Mol	Chain	Res	Type	Group
1	D	990	VAL	Peptide
1	E	105	ALA	Peptide
1	E	1053	LYS	Peptide
1	E	1054	GLU	Peptide
1	E	1283	GLY	Peptide
1	E	141	ARG	Peptide
1	E	142	ARG	Peptide
1	E	1545	PHE	Peptide
1	E	1591	ILE	Peptide
1	E	1606	THR	Peptide
1	E	1620	ARG	Peptide
1	E	194	ARG	Peptide
1	E	1995	THR	Peptide
1	E	593	SER	Peptide
1	E	733	GLN	Peptide
1	E	989	GLU	Peptide
1	E	990	VAL	Peptide

## 5.2 Too-close contacts [i](#)

In the following table, the Non-H and H(model) columns list the number of non-hydrogen atoms and hydrogen atoms in the chain respectively. The H(added) column lists the number of hydrogen atoms added and optimized by MolProbity. The Clashes column lists the number of clashes within the asymmetric unit, whereas Symm-Clashes lists symmetry-related clashes.

Mol	Chain	Non-H	H(model)	H(added)	Clashes	Symm-Clashes
1	A	18913	0	18625	247	0
1	B	18913	0	18625	234	0
1	C	18913	0	18625	228	0
1	D	18913	0	18625	234	0
1	E	18913	0	18625	233	0
All	All	94565	0	93125	1086	0

The all-atom clashscore is defined as the number of clashes found per 1000 atoms (including hydrogen atoms). The all-atom clashscore for this structure is 6.

All (1086) close contacts within the same asymmetric unit are listed below, sorted by their clash magnitude.

Atom-1	Atom-2	Interatomic distance (Å)	Clash overlap (Å)
1:E:28:SER:O	1:E:32:PHE:HB2	1.77	0.85

*Continued on next page...*



*Continued from previous page...*

Atom-1	Atom-2	Interatomic distance (Å)	Clash overlap (Å)
1:C:28:SER:O	1:C:32:PHE:HB2	1.77	0.85
1:B:28:SER:O	1:B:32:PHE:HB2	1.77	0.84
1:D:28:SER:O	1:D:32:PHE:HB2	1.77	0.84
1:A:28:SER:O	1:A:32:PHE:HB2	1.77	0.84
1:B:1578:TYR:HB2	1:B:1592:ARG:HE	1.48	0.79
1:E:1578:TYR:HB2	1:E:1592:ARG:HE	1.48	0.79
1:A:1578:TYR:HB2	1:A:1592:ARG:HE	1.48	0.79
1:D:1578:TYR:HB2	1:D:1592:ARG:HE	1.48	0.78
1:C:1578:TYR:HB2	1:C:1592:ARG:HE	1.48	0.77
1:B:980:THR:HG1	1:B:1000:HIS:HE2	1.35	0.74
1:C:980:THR:HG1	1:C:1000:HIS:HE2	1.35	0.74
1:C:2155:ASN:HD21	1:C:2277:ARG:HD2	1.54	0.72
1:B:2155:ASN:HD21	1:B:2277:ARG:HD2	1.55	0.72
1:D:2155:ASN:HD21	1:D:2277:ARG:HD2	1.55	0.72
1:A:980:THR:HG1	1:A:1000:HIS:HE2	1.35	0.71
1:D:980:THR:HG1	1:D:1000:HIS:HE2	1.36	0.71
1:E:2155:ASN:HD21	1:E:2277:ARG:HD2	1.55	0.71
1:A:2155:ASN:HD21	1:A:2277:ARG:HD2	1.54	0.71
1:E:980:THR:HG1	1:E:1000:HIS:HE2	1.36	0.70
1:C:69:ARG:NH1	1:C:92:TYR:OH	2.26	0.69
1:A:69:ARG:NH1	1:A:92:TYR:OH	2.26	0.68
1:B:69:ARG:NH1	1:B:92:TYR:OH	2.26	0.68
1:D:69:ARG:NH1	1:D:92:TYR:OH	2.26	0.68
1:E:603:TRP:O	1:E:607:GLN:HB2	1.94	0.68
1:E:69:ARG:NH1	1:E:92:TYR:OH	2.26	0.68
1:C:603:TRP:O	1:C:607:GLN:HB2	1.94	0.68
1:D:2326:GLN:HE21	1:E:2197:ARG:HH22	1.40	0.68
1:A:603:TRP:O	1:A:607:GLN:HB2	1.94	0.67
1:A:987:LYS:NZ	1:E:1139:SER:O	2.28	0.67
1:D:1052:GLN:HE22	1:E:1058:VAL:H	1.43	0.67
1:D:603:TRP:O	1:D:607:GLN:HB2	1.94	0.66
1:B:603:TRP:O	1:B:607:GLN:HB2	1.94	0.66
1:B:35:GLN:HG3	1:B:38:ASP:HB2	1.78	0.66
1:C:2326:GLN:HE21	1:D:2197:ARG:HH22	1.43	0.66
1:A:1139:SER:O	1:B:987:LYS:NZ	2.25	0.66
1:A:35:GLN:HG3	1:A:38:ASP:HB2	1.78	0.66
1:C:985:ASN:OD1	1:C:991:ASN:ND2	2.29	0.65
1:E:985:ASN:OD1	1:E:991:ASN:ND2	2.29	0.65
1:A:1570:ALA:HB3	1:A:1576:ASN:HD22	1.62	0.65
1:B:985:ASN:OD1	1:B:991:ASN:ND2	2.29	0.65
1:E:1570:ALA:HB3	1:E:1576:ASN:HD22	1.62	0.65

*Continued on next page...*

*Continued from previous page...*

Atom-1	Atom-2	Interatomic distance (Å)	Clash overlap (Å)
1:A:1759:HIS:HE1	1:E:874:GLU:HG3	1.62	0.65
1:A:985:ASN:OD1	1:A:991:ASN:ND2	2.29	0.65
1:A:1540:LYS:HG3	1:A:1542:GLY:H	1.62	0.65
1:C:35:GLN:HG3	1:C:38:ASP:HB2	1.77	0.64
1:D:985:ASN:OD1	1:D:991:ASN:ND2	2.29	0.64
1:B:1570:ALA:HB3	1:B:1576:ASN:HD22	1.62	0.64
1:E:35:GLN:HG3	1:E:38:ASP:HB2	1.78	0.64
1:D:1570:ALA:HB3	1:D:1576:ASN:HD22	1.62	0.64
1:A:2202:GLU:HG2	1:A:2376:ARG:HG2	1.79	0.64
1:B:1540:LYS:HG3	1:B:1542:GLY:H	1.62	0.64
1:B:2202:GLU:HG2	1:B:2376:ARG:HG2	1.79	0.64
1:D:35:GLN:HG3	1:D:38:ASP:HB2	1.78	0.64
1:C:1540:LYS:HG3	1:C:1542:GLY:H	1.62	0.64
1:E:1540:LYS:HG3	1:E:1542:GLY:H	1.62	0.64
1:A:1058:VAL:H	1:E:1052:GLN:HE22	1.47	0.63
1:C:1052:GLN:HE22	1:D:1058:VAL:H	1.46	0.63
1:D:1540:LYS:HG3	1:D:1542:GLY:H	1.62	0.63
1:C:2202:GLU:HG2	1:C:2376:ARG:HG2	1.79	0.63
1:C:1570:ALA:HB3	1:C:1576:ASN:HD22	1.61	0.63
1:D:2202:GLU:HG2	1:D:2376:ARG:HG2	1.79	0.63
1:B:1052:GLN:HE22	1:C:1058:VAL:H	1.47	0.63
1:B:2326:GLN:HE21	1:C:2197:ARG:HH22	1.46	0.63
1:C:874:GLU:HG3	1:D:1759:HIS:HE1	1.64	0.62
1:E:2202:GLU:HG2	1:E:2376:ARG:HG2	1.79	0.62
1:B:365:GLU:OE1	1:B:389:ARG:NH2	2.33	0.62
1:A:848:GLN:OE1	1:B:1841:ARG:NH1	2.32	0.62
1:C:1139:SER:O	1:D:987:LYS:NZ	2.32	0.62
1:B:54:GLN:HG3	1:B:1798:ARG:HH22	1.66	0.61
1:C:331:LEU:HD12	1:C:378:TYR:HD2	1.66	0.61
1:E:54:GLN:HG3	1:E:1798:ARG:HH22	1.66	0.61
1:B:874:GLU:HG3	1:C:1759:HIS:HE1	1.65	0.61
1:C:54:GLN:HG3	1:C:1798:ARG:HH22	1.66	0.61
1:C:365:GLU:OE1	1:C:389:ARG:NH2	2.33	0.60
1:D:874:GLU:HG3	1:E:1759:HIS:HE1	1.64	0.60
1:E:365:GLU:OE1	1:E:389:ARG:NH2	2.33	0.60
1:A:2204:THR:HG21	1:E:2292:TYR:HB3	1.83	0.60
1:B:1139:SER:O	1:C:987:LYS:NZ	2.34	0.60
1:A:54:GLN:HG3	1:A:1798:ARG:HH22	1.66	0.60
1:A:1612:THR:HG23	1:A:1614:PRO:HD3	1.84	0.60
1:B:331:LEU:HD12	1:B:378:TYR:HD2	1.66	0.60
1:D:54:GLN:HG3	1:D:1798:ARG:HH22	1.66	0.60

*Continued on next page...*

Continued from previous page...

Atom-1	Atom-2	Interatomic distance (Å)	Clash overlap (Å)
1:E:331:LEU:HD12	1:E:378:TYR:HD2	1.66	0.60
1:E:1005:ASP:HA	1:E:1546:PRO:HG2	1.84	0.60
1:A:331:LEU:HD12	1:A:378:TYR:HD2	1.66	0.60
1:A:1052:GLN:HE22	1:B:1058:VAL:H	1.49	0.60
1:C:1005:ASP:HA	1:C:1546:PRO:HG2	1.84	0.60
1:D:1612:THR:HG23	1:D:1614:PRO:HD3	1.84	0.60
1:B:1612:THR:HG23	1:B:1614:PRO:HD3	1.84	0.59
1:D:1005:ASP:HA	1:D:1546:PRO:HG2	1.84	0.59
1:A:365:GLU:OE1	1:A:389:ARG:NH2	2.33	0.59
1:D:331:LEU:HD12	1:D:378:TYR:HD2	1.66	0.59
1:B:1555:ILE:HG23	1:B:1557:GLN:HB2	1.84	0.59
1:A:196:SER:HB2	1:A:199:ILE:HG12	1.84	0.59
1:D:1139:SER:O	1:E:987:LYS:NZ	2.32	0.59
1:B:196:SER:HB2	1:B:199:ILE:HG12	1.85	0.59
1:C:1516:ILE:HG23	1:C:1617:ALA:HB3	1.85	0.59
1:A:2178:GLU:HG3	1:E:1906:PHE:HE1	1.68	0.59
1:C:1555:ILE:HG23	1:C:1557:GLN:HB2	1.84	0.59
1:D:2292:TYR:HB3	1:E:2204:THR:HG21	1.85	0.59
1:A:1516:ILE:HG23	1:A:1617:ALA:HB3	1.85	0.59
1:D:66:ILE:HG13	1:D:99:ARG:HG3	1.85	0.59
1:D:365:GLU:OE1	1:D:389:ARG:NH2	2.33	0.59
1:A:1555:ILE:HG23	1:A:1557:GLN:HB2	1.84	0.59
1:A:2274:LYS:H	1:A:2381:GLU:HB2	1.68	0.59
1:C:2242:ASN:ND2	1:C:2259:ASP:OD2	2.35	0.59
1:C:2274:LYS:H	1:C:2381:GLU:HB2	1.68	0.59
1:E:66:ILE:HG13	1:E:99:ARG:HG3	1.85	0.59
1:B:1005:ASP:HA	1:B:1546:PRO:HG2	1.84	0.59
1:D:1555:ILE:HG23	1:D:1557:GLN:HB2	1.84	0.59
1:E:2059:ARG:HA	1:E:2062:TRP:HD1	1.68	0.59
1:A:66:ILE:HG13	1:A:99:ARG:HG3	1.85	0.59
1:A:1005:ASP:HA	1:A:1546:PRO:HG2	1.84	0.59
1:C:141:ARG:O	1:C:141:ARG:NH1	2.36	0.59
1:C:1612:THR:HG23	1:C:1614:PRO:HD3	1.84	0.59
1:E:1612:THR:HG23	1:E:1614:PRO:HD3	1.84	0.59
1:E:1516:ILE:HG23	1:E:1617:ALA:HB3	1.85	0.58
1:E:1555:ILE:HG23	1:E:1557:GLN:HB2	1.84	0.58
1:E:2242:ASN:ND2	1:E:2259:ASP:OD2	2.35	0.58
1:A:1555:ILE:HD12	1:E:1248:LYS:HA	1.85	0.58
1:D:141:ARG:O	1:D:141:ARG:NH1	2.36	0.58
1:B:66:ILE:HG13	1:B:99:ARG:HG3	1.85	0.58
1:B:1516:ILE:HG23	1:B:1617:ALA:HB3	1.85	0.58

Continued on next page...

Continued from previous page...

Atom-1	Atom-2	Interatomic distance (Å)	Clash overlap (Å)
1:B:2242:ASN:ND2	1:B:2259:ASP:OD2	2.35	0.58
1:C:66:ILE:HG13	1:C:99:ARG:HG3	1.85	0.58
1:C:90:ARG:HH12	1:C:1800:GLY:HA2	1.69	0.58
1:D:196:SER:HB2	1:D:199:ILE:HG12	1.85	0.58
1:A:2197:ARG:HH22	1:E:2326:GLN:HE21	1.51	0.58
1:B:1472:ARG:NH1	1:B:1507:MET:O	2.37	0.58
1:E:196:SER:HB2	1:E:199:ILE:HG12	1.85	0.58
1:B:141:ARG:O	1:B:141:ARG:NH1	2.36	0.58
1:B:2160:ARG:NH2	1:B:2162:ILE:O	2.37	0.58
1:C:196:SER:HB2	1:C:199:ILE:HG12	1.85	0.58
1:D:437:LEU:HD13	1:D:474:ILE:HD12	1.86	0.58
1:D:2059:ARG:HA	1:D:2062:TRP:HD1	1.68	0.58
1:D:2242:ASN:ND2	1:D:2259:ASP:OD2	2.35	0.58
1:A:874:GLU:HG3	1:B:1759:HIS:HE1	1.68	0.58
1:A:1472:ARG:NH1	1:A:1507:MET:O	2.37	0.58
1:B:2274:LYS:H	1:B:2381:GLU:HB2	1.68	0.58
1:C:2292:TYR:HB3	1:D:2204:THR:HG21	1.86	0.58
1:D:1808:LEU:HA	1:D:1811:ALA:HB3	1.86	0.58
1:D:2160:ARG:NH2	1:D:2162:ILE:O	2.37	0.58
1:D:2274:LYS:H	1:D:2381:GLU:HB2	1.68	0.58
1:A:2160:ARG:NH2	1:A:2162:ILE:O	2.37	0.58
1:A:2059:ARG:HA	1:A:2062:TRP:HD1	1.68	0.58
1:A:2242:ASN:ND2	1:A:2259:ASP:OD2	2.35	0.58
1:B:589:LYS:NZ	1:B:652:ILE:O	2.37	0.58
1:B:90:ARG:HH12	1:B:1800:GLY:HA2	1.69	0.57
1:C:437:LEU:HD13	1:C:474:ILE:HD12	1.86	0.57
1:D:589:LYS:NZ	1:D:652:ILE:O	2.37	0.57
1:B:1238:ARG:NH1	1:B:1260:THR:O	2.37	0.57
1:C:2160:ARG:NH2	1:C:2162:ILE:O	2.37	0.57
1:E:90:ARG:HH12	1:E:1800:GLY:HA2	1.69	0.57
1:E:1808:LEU:HA	1:E:1811:ALA:HB3	1.86	0.57
1:A:1808:LEU:HA	1:A:1811:ALA:HB3	1.86	0.57
1:A:437:LEU:HD13	1:A:474:ILE:HD12	1.86	0.57
1:B:2059:ARG:HA	1:B:2062:TRP:HD1	1.68	0.57
1:C:1808:LEU:HA	1:C:1811:ALA:HB3	1.86	0.57
1:D:1516:ILE:HG23	1:D:1617:ALA:HB3	1.85	0.57
1:A:90:ARG:HH12	1:A:1800:GLY:HA2	1.69	0.57
1:A:141:ARG:O	1:A:141:ARG:NH1	2.36	0.57
1:A:589:LYS:NZ	1:A:652:ILE:O	2.37	0.57
1:A:1238:ARG:NH1	1:A:1260:THR:O	2.37	0.57
1:A:2361:GLN:HB3	1:A:2365:LEU:HD13	1.87	0.57

Continued on next page...

Continued from previous page...

Atom-1	Atom-2	Interatomic distance (Å)	Clash overlap (Å)
1:C:589:LYS:NZ	1:C:652:ILE:O	2.37	0.57
1:D:90:ARG:HH12	1:D:1800:GLY:HA2	1.69	0.57
1:E:2274:LYS:H	1:E:2381:GLU:HB2	1.68	0.57
1:C:1472:ARG:NH1	1:C:1507:MET:O	2.37	0.57
1:D:1238:ARG:NH1	1:D:1260:THR:O	2.37	0.57
1:E:141:ARG:O	1:E:141:ARG:NH1	2.36	0.57
1:E:1238:ARG:NH1	1:E:1260:THR:O	2.37	0.57
1:E:2160:ARG:NH2	1:E:2162:ILE:O	2.37	0.57
1:A:792:ILE:HD11	1:E:396:LEU:HD21	1.86	0.57
1:C:603:TRP:O	1:C:607:GLN:CB	2.53	0.57
1:A:210:LYS:HZ3	1:A:805:THR:HG22	1.70	0.57
1:C:1238:ARG:NH1	1:C:1260:THR:O	2.37	0.57
1:C:2059:ARG:HA	1:C:2062:TRP:HD1	1.68	0.57
1:B:603:TRP:O	1:B:607:GLN:CB	2.53	0.56
1:E:437:LEU:HD13	1:E:474:ILE:HD12	1.86	0.56
1:A:2356:ASN:ND2	1:B:2265:ASP:O	2.38	0.56
1:B:1808:LEU:HA	1:B:1811:ALA:HB3	1.86	0.56
1:B:2359:SER:HA	1:B:2362:LYS:HB2	1.87	0.56
1:D:1297:ARG:NH1	1:D:1299:THR:O	2.38	0.56
1:D:2361:GLN:HB3	1:D:2365:LEU:HD13	1.87	0.56
1:E:589:LYS:NZ	1:E:652:ILE:O	2.37	0.56
1:B:437:LEU:HD13	1:B:474:ILE:HD12	1.86	0.56
1:B:2361:GLN:HB3	1:B:2365:LEU:HD13	1.87	0.56
1:D:210:LYS:HZ3	1:D:805:THR:HG22	1.70	0.56
1:A:603:TRP:O	1:A:607:GLN:CB	2.53	0.56
1:A:1297:ARG:NH1	1:A:1299:THR:O	2.38	0.56
1:C:2361:GLN:HB3	1:C:2365:LEU:HD13	1.87	0.56
1:E:603:TRP:O	1:E:607:GLN:CB	2.53	0.56
1:B:1899:MET:HB3	1:B:2139:VAL:HG22	1.87	0.56
1:C:1297:ARG:NH1	1:C:1299:THR:O	2.38	0.56
1:D:1472:ARG:NH1	1:D:1507:MET:O	2.37	0.56
1:C:35:GLN:HE21	1:C:39:HIS:HB2	1.71	0.56
1:D:1899:MET:HB3	1:D:2139:VAL:HG22	1.87	0.56
1:E:35:GLN:HE21	1:E:39:HIS:HB2	1.71	0.56
1:E:210:LYS:HZ3	1:E:805:THR:HG22	1.70	0.56
1:E:228:VAL:HA	1:E:231:LEU:HD13	1.88	0.56
1:E:1297:ARG:NH1	1:E:1299:THR:O	2.38	0.56
1:E:2361:GLN:HB3	1:E:2365:LEU:HD13	1.87	0.56
1:B:1297:ARG:NH1	1:B:1299:THR:O	2.38	0.56
1:A:1932:GLU:OE1	1:E:2103:GLN:NE2	2.31	0.55
1:A:2359:SER:HA	1:A:2362:LYS:HB2	1.87	0.55

Continued on next page...

*Continued from previous page...*

Atom-1	Atom-2	Interatomic distance (Å)	Clash overlap (Å)
1:B:35:GLN:HE21	1:B:39:HIS:HB2	1.71	0.55
1:C:1899:MET:HB3	1:C:2139:VAL:HG22	1.87	0.55
1:D:603:TRP:O	1:D:607:GLN:CB	2.53	0.55
1:D:2359:SER:HA	1:D:2362:LYS:HB2	1.87	0.55
1:A:228:VAL:HA	1:A:231:LEU:HD13	1.88	0.55
1:C:228:VAL:HA	1:C:231:LEU:HD13	1.88	0.55
1:C:596:LYS:O	1:C:601:LYS:NZ	2.38	0.55
1:D:228:VAL:HA	1:D:231:LEU:HD13	1.89	0.55
1:A:35:GLN:HE21	1:A:39:HIS:HB2	1.71	0.55
1:B:2160:ARG:HH22	1:B:2163:LYS:HA	1.72	0.55
1:E:2359:SER:HA	1:E:2362:LYS:HB2	1.87	0.55
1:A:1899:MET:HB3	1:A:2139:VAL:HG22	1.87	0.55
1:E:1472:ARG:NH1	1:E:1507:MET:O	2.37	0.55
1:B:228:VAL:HA	1:B:231:LEU:HD13	1.89	0.55
1:C:1514:GLU:OE2	1:C:1559:THR:OG1	2.25	0.55
1:D:65:ARG:HE	1:D:99:ARG:HD2	1.72	0.55
1:D:1514:GLU:OE2	1:D:1559:THR:OG1	2.25	0.55
1:E:1514:GLU:OE2	1:E:1559:THR:OG1	2.25	0.55
1:B:220:GLU:O	1:B:224:LYS:HB2	2.07	0.55
1:C:1226:PRO:HG2	1:C:1402:PHE:HD2	1.72	0.55
1:C:1250:GLY:HA3	1:C:1256:PHE:HZ	1.72	0.55
1:D:1226:PRO:HG2	1:D:1402:PHE:HD2	1.72	0.55
1:C:1011:ASN:ND2	1:C:1699:ASN:OD1	2.41	0.54
1:B:1514:GLU:OE2	1:B:1559:THR:OG1	2.25	0.54
1:C:391:PHE:O	1:C:425:ARG:NH2	2.40	0.54
1:A:1514:GLU:OE2	1:A:1559:THR:OG1	2.25	0.54
1:B:1250:GLY:HA3	1:B:1256:PHE:HZ	1.72	0.54
1:B:2292:TYR:HB3	1:C:2204:THR:HG21	1.88	0.54
1:C:277:LEU:HD23	1:C:313:LEU:HD13	1.90	0.54
1:D:35:GLN:HE21	1:D:39:HIS:HB2	1.71	0.54
1:D:1011:ASN:ND2	1:D:1699:ASN:OD1	2.40	0.54
1:E:1899:MET:HB3	1:E:2139:VAL:HG22	1.87	0.54
1:C:2160:ARG:HH22	1:C:2163:LYS:HA	1.72	0.54
1:C:2359:SER:HA	1:C:2362:LYS:HB2	1.87	0.54
1:E:1250:GLY:HA3	1:E:1256:PHE:HZ	1.72	0.54
1:A:65:ARG:HE	1:A:99:ARG:HD2	1.72	0.54
1:A:1011:ASN:ND2	1:A:1699:ASN:OD1	2.40	0.54
1:A:1226:PRO:HG2	1:A:1402:PHE:HD2	1.72	0.54
1:A:2160:ARG:HH22	1:A:2163:LYS:HA	1.72	0.54
1:B:65:ARG:HE	1:B:99:ARG:HD2	1.72	0.54
1:C:65:ARG:HE	1:C:99:ARG:HD2	1.72	0.54

*Continued on next page...*

*Continued from previous page...*

Atom-1	Atom-2	Interatomic distance (Å)	Clash overlap (Å)
1:E:220:GLU:O	1:E:224:LYS:HB2	2.07	0.54
1:A:1250:GLY:HA3	1:A:1256:PHE:HZ	1.72	0.54
1:A:1736:ASP:OD1	1:A:1754:TYR:OH	2.26	0.54
1:C:1308:TRP:HD1	1:C:1315:SER:HB3	1.73	0.54
1:D:220:GLU:O	1:D:224:LYS:HB2	2.07	0.54
1:D:2219:PHE:HB2	1:D:2224:LYS:HG3	1.90	0.54
1:E:2160:ARG:HH22	1:E:2163:LYS:HA	1.72	0.54
1:E:2219:PHE:HB2	1:E:2224:LYS:HG3	1.90	0.54
1:A:220:GLU:O	1:A:224:LYS:HB2	2.07	0.54
1:B:2219:PHE:HB2	1:B:2224:LYS:HG3	1.90	0.54
1:D:1454:LEU:HD22	1:D:1468:TRP:HA	1.90	0.54
1:D:2160:ARG:HH22	1:D:2163:LYS:HA	1.72	0.54
1:E:21:LEU:HD23	1:E:22:THR:HG22	1.90	0.54
1:E:1454:LEU:HD22	1:E:1468:TRP:HA	1.90	0.54
1:B:391:PHE:O	1:B:425:ARG:NH2	2.41	0.54
1:B:1452:ASN:H	1:B:1539:PHE:HZ	1.56	0.54
1:C:441:ALA:HB2	1:C:463:THR:HG21	1.90	0.54
1:C:2219:PHE:HB2	1:C:2224:LYS:HG3	1.90	0.54
1:D:1308:TRP:HD1	1:D:1315:SER:HB3	1.73	0.54
1:E:1622:ILE:HG23	1:E:1623:GLN:HG3	1.90	0.54
1:D:572:LEU:O	1:D:639:ARG:NH2	2.41	0.54
1:E:1226:PRO:HG2	1:E:1402:PHE:HD2	1.72	0.54
1:E:1308:TRP:HD1	1:E:1315:SER:HB3	1.73	0.54
1:A:277:LEU:HD23	1:A:313:LEU:HD13	1.90	0.54
1:A:1454:LEU:HD22	1:A:1468:TRP:HA	1.90	0.54
1:B:1226:PRO:HG2	1:B:1402:PHE:HD2	1.72	0.54
1:C:572:LEU:O	1:C:639:ARG:NH2	2.41	0.54
1:C:1361:ASN:H	1:C:1433:ARG:HH12	1.55	0.54
1:C:1622:ILE:HG23	1:C:1623:GLN:HG3	1.90	0.54
1:D:1250:GLY:HA3	1:D:1256:PHE:HZ	1.72	0.54
1:D:1622:ILE:HG23	1:D:1623:GLN:HG3	1.90	0.54
1:D:1888:ARG:N	1:D:2334:GLY:O	2.41	0.54
1:E:277:LEU:HD23	1:E:313:LEU:HD13	1.90	0.54
1:E:1736:ASP:OD1	1:E:1754:TYR:OH	2.26	0.54
1:A:1452:ASN:H	1:A:1539:PHE:HZ	1.56	0.53
1:B:1736:ASP:OD1	1:B:1754:TYR:OH	2.26	0.53
1:C:1452:ASN:H	1:C:1539:PHE:HZ	1.56	0.53
1:D:391:PHE:O	1:D:425:ARG:NH2	2.41	0.53
1:A:596:LYS:O	1:A:601:LYS:NZ	2.38	0.53
1:E:1204:VAL:HG22	1:E:1230:ILE:HG12	1.91	0.53
1:E:1879:LEU:HG	1:E:2164:PRO:HG3	1.90	0.53

*Continued on next page...*

Continued from previous page...

Atom-1	Atom-2	Interatomic distance (Å)	Clash overlap (Å)
1:A:391:PHE:O	1:A:425:ARG:NH2	2.41	0.53
1:A:1361:ASN:H	1:A:1433:ARG:HH12	1.55	0.53
1:A:2219:PHE:HB2	1:A:2224:LYS:HG3	1.90	0.53
1:B:1204:VAL:HG22	1:B:1230:ILE:HG12	1.91	0.53
1:B:1308:TRP:HD1	1:B:1315:SER:HB3	1.73	0.53
1:B:1454:LEU:HD22	1:B:1468:TRP:HA	1.90	0.53
1:B:1622:ILE:HG23	1:B:1623:GLN:HG3	1.90	0.53
1:B:1879:LEU:HG	1:B:2164:PRO:HG3	1.90	0.53
1:D:1361:ASN:H	1:D:1433:ARG:HH12	1.55	0.53
1:D:1452:ASN:H	1:D:1539:PHE:HZ	1.56	0.53
1:E:572:LEU:O	1:E:639:ARG:NH2	2.41	0.53
1:B:1011:ASN:ND2	1:B:1699:ASN:OD1	2.40	0.53
1:B:2274:LYS:O	1:B:2276:ARG:NH1	2.42	0.53
1:C:1454:LEU:HD22	1:C:1468:TRP:HA	1.90	0.53
1:E:65:ARG:HE	1:E:99:ARG:HD2	1.72	0.53
1:B:848:GLN:OE1	1:C:1841:ARG:NH1	2.41	0.53
1:C:220:GLU:O	1:C:224:LYS:HB2	2.07	0.53
1:D:21:LEU:HD23	1:D:22:THR:HG22	1.90	0.53
1:E:391:PHE:O	1:E:425:ARG:NH2	2.41	0.53
1:E:1011:ASN:ND2	1:E:1699:ASN:OD1	2.40	0.53
1:B:277:LEU:HD23	1:B:313:LEU:HD13	1.90	0.53
1:D:1879:LEU:HG	1:D:2164:PRO:HG3	1.91	0.53
1:E:1452:ASN:H	1:E:1539:PHE:HZ	1.56	0.53
1:A:21:LEU:HD23	1:A:22:THR:HG22	1.90	0.53
1:B:21:LEU:HD23	1:B:22:THR:HG22	1.90	0.53
1:A:572:LEU:O	1:A:639:ARG:NH2	2.41	0.53
1:C:21:LEU:HD23	1:C:22:THR:HG22	1.90	0.53
1:D:848:GLN:OE1	1:E:1841:ARG:NH1	2.42	0.53
1:B:572:LEU:O	1:B:639:ARG:NH2	2.41	0.53
1:B:1361:ASN:H	1:B:1433:ARG:HH12	1.55	0.53
1:C:1736:ASP:OD1	1:C:1754:TYR:OH	2.26	0.53
1:D:277:LEU:HD23	1:D:313:LEU:HD13	1.90	0.53
1:D:412:LEU:HD22	1:E:723:GLN:HG3	1.91	0.53
1:D:1204:VAL:HG22	1:D:1230:ILE:HG12	1.91	0.53
1:E:997:SER:H	1:E:1014:SER:HG	1.56	0.53
1:A:1308:TRP:HD1	1:A:1315:SER:HB3	1.73	0.52
1:A:2274:LYS:O	1:A:2276:ARG:NH1	2.42	0.52
1:C:848:GLN:OE1	1:D:1841:ARG:NH1	2.42	0.52
1:C:2274:LYS:O	1:C:2276:ARG:NH1	2.42	0.52
1:D:177:GLN:HG2	1:D:826:VAL:HG22	1.91	0.52
1:E:2274:LYS:O	1:E:2276:ARG:NH1	2.42	0.52

Continued on next page...



*Continued from previous page...*

Atom-1	Atom-2	Interatomic distance (Å)	Clash overlap (Å)
1:A:1248:LYS:HA	1:B:1555:ILE:HD12	1.91	0.52
1:E:441:ALA:HB2	1:E:463:THR:HG21	1.90	0.52
1:A:1622:ILE:HG23	1:A:1623:GLN:HG3	1.90	0.52
1:B:210:LYS:HZ3	1:B:805:THR:HG22	1.74	0.52
1:B:1113:LEU:HB3	1:B:1137:ILE:HB	1.91	0.52
1:D:922:ARG:NH2	1:D:1641:GLU:OE2	2.43	0.52
1:A:412:LEU:O	1:B:764:GLN:NE2	2.42	0.52
1:C:1204:VAL:HG22	1:C:1230:ILE:HG12	1.91	0.52
1:D:1736:ASP:OD1	1:D:1754:TYR:OH	2.26	0.52
1:E:1113:LEU:HB3	1:E:1137:ILE:HB	1.91	0.52
1:A:441:ALA:HB2	1:A:463:THR:HG21	1.90	0.52
1:A:922:ARG:NH2	1:A:1641:GLU:OE2	2.43	0.52
1:A:1204:VAL:HG22	1:A:1230:ILE:HG12	1.91	0.52
1:B:412:LEU:HD22	1:C:723:GLN:HG3	1.90	0.52
1:B:985:ASN:HA	1:B:991:ASN:HD21	1.75	0.52
1:E:2299:LEU:HB3	1:E:2315:LEU:HB3	1.91	0.52
1:A:396:LEU:HD21	1:B:792:ILE:HD11	1.92	0.52
1:A:1879:LEU:HG	1:A:2164:PRO:HG3	1.91	0.52
1:B:2299:LEU:HB3	1:B:2315:LEU:HB3	1.91	0.52
1:C:985:ASN:HA	1:C:991:ASN:HD21	1.75	0.52
1:D:596:LYS:O	1:D:601:LYS:NZ	2.38	0.52
1:D:1222:ILE:HB	1:D:1407:ILE:HB	1.92	0.52
1:E:1361:ASN:H	1:E:1433:ARG:HH12	1.55	0.52
1:B:441:ALA:HB2	1:B:463:THR:HG21	1.90	0.52
1:D:441:ALA:HB2	1:D:463:THR:HG21	1.90	0.52
1:D:2274:LYS:O	1:D:2276:ARG:NH1	2.42	0.52
1:A:1736:ASP:HB3	1:A:1740:ARG:HH12	1.75	0.52
1:E:177:GLN:HG2	1:E:826:VAL:HG22	1.91	0.52
1:E:922:ARG:NH2	1:E:1641:GLU:OE2	2.43	0.52
1:E:1222:ILE:HB	1:E:1407:ILE:HB	1.92	0.52
1:E:985:ASN:HA	1:E:991:ASN:HD21	1.75	0.52
1:E:1736:ASP:HB3	1:E:1740:ARG:HH12	1.75	0.52
1:A:332:LYS:HE3	1:A:368:LEU:HD21	1.92	0.52
1:A:985:ASN:HA	1:A:991:ASN:HD21	1.75	0.52
1:B:922:ARG:NH2	1:B:1641:GLU:OE2	2.43	0.52
1:B:1728:LEU:HD11	1:B:1761:LEU:HD21	1.92	0.52
1:C:1879:LEU:HG	1:C:2164:PRO:HG3	1.91	0.52
1:C:177:GLN:HG2	1:C:826:VAL:HG22	1.92	0.51
1:C:226:PRO:HD2	1:C:751:GLN:HE22	1.75	0.51
1:C:1222:ILE:HB	1:C:1407:ILE:HB	1.91	0.51
1:E:226:PRO:HD2	1:E:751:GLN:HE22	1.75	0.51

*Continued on next page...*

*Continued from previous page...*

Atom-1	Atom-2	Interatomic distance (Å)	Clash overlap (Å)
1:E:893:TRP:HA	1:E:897:ASN:HB2	1.92	0.51
1:B:1906:PHE:HE1	1:C:2178:GLU:HG3	1.75	0.51
1:C:922:ARG:NH2	1:C:1641:GLU:OE2	2.43	0.51
1:D:2299:LEU:HB3	1:D:2315:LEU:HB3	1.91	0.51
1:A:226:PRO:HD2	1:A:751:GLN:HE22	1.75	0.51
1:C:210:LYS:HZ3	1:C:805:THR:HG22	1.75	0.51
1:D:1248:LYS:HA	1:E:1555:ILE:HD12	1.92	0.51
1:D:1736:ASP:HB3	1:D:1740:ARG:HH12	1.75	0.51
1:A:997:SER:H	1:A:1014:SER:HG	1.57	0.51
1:C:182:SER:OG	1:C:183:ASP:N	2.44	0.51
1:C:1728:LEU:HD11	1:C:1761:LEU:HD21	1.92	0.51
1:D:1113:LEU:HB3	1:D:1137:ILE:HB	1.91	0.51
1:E:559:LYS:HE2	1:E:561:LEU:HB2	1.93	0.51
1:A:893:TRP:HA	1:A:897:ASN:HB2	1.92	0.51
1:A:1113:LEU:HB3	1:A:1137:ILE:HB	1.91	0.51
1:C:893:TRP:HA	1:C:897:ASN:HB2	1.92	0.51
1:C:1888:ARG:N	1:C:2334:GLY:O	2.41	0.51
1:A:2299:LEU:HB3	1:A:2315:LEU:HB3	1.91	0.51
1:D:332:LYS:HE3	1:D:368:LEU:HD21	1.93	0.51
1:A:177:GLN:HG2	1:A:826:VAL:HG22	1.91	0.51
1:A:1906:PHE:HE1	1:B:2178:GLU:HG3	1.76	0.51
1:B:1248:LYS:HA	1:C:1555:ILE:HD12	1.91	0.51
1:C:559:LYS:HE2	1:C:561:LEU:HB2	1.93	0.51
1:D:226:PRO:HD2	1:D:751:GLN:HE22	1.75	0.51
1:E:1888:ARG:N	1:E:2334:GLY:O	2.41	0.51
1:B:226:PRO:HD2	1:B:751:GLN:HE22	1.75	0.51
1:B:1222:ILE:HB	1:B:1407:ILE:HB	1.92	0.51
1:D:559:LYS:HE2	1:D:561:LEU:HB2	1.93	0.51
1:B:396:LEU:HD21	1:C:792:ILE:HD11	1.92	0.51
1:E:332:LYS:HE3	1:E:368:LEU:HD21	1.93	0.51
1:C:1113:LEU:HB3	1:C:1137:ILE:HB	1.91	0.51
1:C:1736:ASP:HB3	1:C:1740:ARG:HH12	1.75	0.51
1:D:985:ASN:HA	1:D:991:ASN:HD21	1.75	0.51
1:B:177:GLN:HG2	1:B:826:VAL:HG22	1.91	0.50
1:B:1736:ASP:HB3	1:B:1740:ARG:HH12	1.75	0.50
1:A:1728:LEU:HD11	1:A:1761:LEU:HD21	1.92	0.50
1:C:412:LEU:HD22	1:D:723:GLN:HG3	1.92	0.50
1:D:1906:PHE:HE1	1:E:2178:GLU:HG3	1.77	0.50
1:A:559:LYS:HE2	1:A:561:LEU:HB2	1.93	0.50
1:A:1222:ILE:HB	1:A:1407:ILE:HB	1.92	0.50
1:D:141:ARG:HD3	1:D:843:LEU:HD22	1.94	0.50

*Continued on next page...*

*Continued from previous page...*

Atom-1	Atom-2	Interatomic distance (Å)	Clash overlap (Å)
1:E:1728:LEU:HD11	1:E:1761:LEU:HD21	1.92	0.50
1:B:412:LEU:O	1:C:764:GLN:NE2	2.45	0.50
1:C:2290:GLY:HA3	1:C:2293:GLN:HB3	1.93	0.50
1:D:182:SER:OG	1:D:183:ASP:N	2.44	0.50
1:D:893:TRP:HA	1:D:897:ASN:HB2	1.92	0.50
1:D:1728:LEU:HD11	1:D:1761:LEU:HD21	1.92	0.50
1:A:412:LEU:HD22	1:B:723:GLN:HG3	1.94	0.50
1:B:332:LYS:HE3	1:B:368:LEU:HD21	1.93	0.50
1:B:559:LYS:HE2	1:B:561:LEU:HB2	1.93	0.50
1:C:1248:LYS:HA	1:D:1555:ILE:HD12	1.92	0.50
1:A:141:ARG:HD3	1:A:843:LEU:HD22	1.94	0.50
1:B:893:TRP:HA	1:B:897:ASN:HB2	1.92	0.50
1:C:1906:PHE:HE1	1:D:2178:GLU:HG3	1.76	0.50
1:C:2299:LEU:HB3	1:C:2315:LEU:HB3	1.91	0.50
1:E:182:SER:OG	1:E:183:ASP:N	2.44	0.50
1:B:586:TRP:HD1	1:B:634:LEU:HD13	1.77	0.50
1:E:141:ARG:HD3	1:E:843:LEU:HD22	1.94	0.50
1:E:596:LYS:O	1:E:601:LYS:NZ	2.38	0.50
1:A:1888:ARG:N	1:A:2334:GLY:O	2.41	0.50
1:C:586:TRP:HD1	1:C:634:LEU:HD13	1.77	0.50
1:C:2356:ASN:HB3	1:C:2360:LYS:HB3	1.94	0.50
1:D:586:TRP:HD1	1:D:634:LEU:HD13	1.77	0.50
1:D:2290:GLY:HA3	1:D:2293:GLN:HB3	1.94	0.50
1:A:586:TRP:HD1	1:A:634:LEU:HD13	1.77	0.50
1:A:2326:GLN:HE21	1:B:2197:ARG:HH22	1.60	0.50
1:C:396:LEU:HD21	1:D:792:ILE:HD11	1.93	0.49
1:B:596:LYS:O	1:B:601:LYS:NZ	2.38	0.49
1:C:141:ARG:HD3	1:C:843:LEU:HD22	1.94	0.49
1:D:2356:ASN:HB3	1:D:2360:LYS:HB3	1.94	0.49
1:E:1491:ILE:HA	1:E:1494:ILE:HD12	1.94	0.49
1:A:964:GLU:O	1:A:985:ASN:N	2.44	0.49
1:A:1491:ILE:HA	1:A:1494:ILE:HD12	1.94	0.49
1:B:2356:ASN:HB3	1:B:2360:LYS:HB3	1.94	0.49
1:C:519:SER:HB2	1:C:522:GLN:HG3	1.94	0.49
1:A:347:LEU:HA	1:A:350:ILE:HG22	1.95	0.49
1:B:519:SER:HB2	1:B:522:GLN:HG3	1.94	0.49
1:C:332:LYS:HE3	1:C:368:LEU:HD21	1.93	0.49
1:B:1035:TYR:HB2	1:B:1113:LEU:HD13	1.94	0.49
1:C:1035:TYR:HB2	1:C:1113:LEU:HD13	1.95	0.49
1:E:2290:GLY:HA3	1:E:2293:GLN:HB3	1.94	0.49
1:A:146:GLN:HB2	1:A:1779:ASP:HB2	1.94	0.49

*Continued on next page...*

Continued from previous page...

Atom-1	Atom-2	Interatomic distance (Å)	Clash overlap (Å)
1:A:182:SER:OG	1:A:183:ASP:N	2.44	0.49
1:A:2188:GLU:HB3	1:E:2142:ARG:HH22	1.78	0.49
1:C:420:LYS:HG2	1:C:424:LYS:HE2	1.95	0.49
1:D:76:ASN:ND2	1:D:1760:LEU:O	2.46	0.49
1:D:396:LEU:HD21	1:E:792:ILE:HD11	1.94	0.49
1:E:249:PHE:O	1:E:253:THR:OG1	2.23	0.49
1:A:519:SER:HB2	1:A:522:GLN:HG3	1.95	0.49
1:A:1035:TYR:HB2	1:A:1113:LEU:HD13	1.95	0.49
1:A:1841:ARG:NH1	1:E:848:GLN:OE1	2.45	0.49
1:A:2290:GLY:HA3	1:A:2293:GLN:HB3	1.93	0.49
1:B:141:ARG:HD3	1:B:843:LEU:HD22	1.94	0.49
1:D:146:GLN:HB2	1:D:1779:ASP:HB2	1.94	0.49
1:D:392:ASN:HD21	1:D:401:PHE:H	1.60	0.49
1:E:146:GLN:HB2	1:E:1779:ASP:HB2	1.94	0.49
1:A:1318:ASN:ND2	1:A:1327:CYS:O	2.46	0.49
1:B:1491:ILE:HA	1:B:1494:ILE:HD12	1.94	0.49
1:B:2290:GLY:HA3	1:B:2293:GLN:HB3	1.94	0.49
1:C:350:ILE:HA	1:C:353:VAL:HG12	1.95	0.49
1:D:519:SER:HB2	1:D:522:GLN:HG3	1.94	0.49
1:E:350:ILE:HA	1:E:353:VAL:HG12	1.95	0.49
1:E:2356:ASN:HB3	1:E:2360:LYS:HB3	1.94	0.49
1:B:1318:ASN:ND2	1:B:1327:CYS:O	2.46	0.49
1:B:1545:PHE:CD2	1:B:1546:PRO:HD3	2.48	0.49
1:C:347:LEU:HA	1:C:350:ILE:HG22	1.95	0.49
1:D:420:LYS:HG2	1:D:424:LYS:HE2	1.95	0.49
1:B:350:ILE:HA	1:B:353:VAL:HG12	1.95	0.48
1:C:964:GLU:O	1:C:985:ASN:N	2.44	0.48
1:E:392:ASN:HD21	1:E:401:PHE:H	1.60	0.48
1:E:420:LYS:HG2	1:E:424:LYS:HE2	1.95	0.48
1:E:2282:SER:HB2	1:E:2374:HIS:HB2	1.95	0.48
1:B:420:LYS:HG2	1:B:424:LYS:HE2	1.95	0.48
1:B:1183:GLU:HB3	1:B:1445:ILE:HG23	1.96	0.48
1:C:1183:GLU:HB3	1:C:1445:ILE:HG23	1.96	0.48
1:C:1545:PHE:CD2	1:C:1546:PRO:HD3	2.48	0.48
1:A:350:ILE:HA	1:A:353:VAL:HG12	1.95	0.48
1:A:1822:ILE:HD11	1:A:1827:LEU:HD12	1.96	0.48
1:A:2282:SER:HB2	1:A:2374:HIS:HB2	1.95	0.48
1:B:76:ASN:ND2	1:B:1760:LEU:O	2.46	0.48
1:B:146:GLN:HB2	1:B:1779:ASP:HB2	1.94	0.48
1:C:1318:ASN:ND2	1:C:1327:CYS:O	2.46	0.48
1:D:350:ILE:HA	1:D:353:VAL:HG12	1.95	0.48

Continued on next page...

*Continued from previous page...*

Atom-1	Atom-2	Interatomic distance (Å)	Clash overlap (Å)
1:D:997:SER:H	1:D:1014:SER:HG	1.59	0.48
1:D:1458:HIS:HA	1:D:1464:GLN:HG2	1.95	0.48
1:E:1035:TYR:HB2	1:E:1113:LEU:HD13	1.95	0.48
1:A:76:ASN:ND2	1:A:1760:LEU:O	2.46	0.48
1:B:392:ASN:HD21	1:B:401:PHE:H	1.60	0.48
1:D:1822:ILE:HD11	1:D:1827:LEU:HD12	1.96	0.48
1:E:347:LEU:HA	1:E:350:ILE:HG22	1.95	0.48
1:A:1458:HIS:HA	1:A:1464:GLN:HG2	1.95	0.48
1:A:2356:ASN:HB3	1:A:2360:LYS:HB3	1.94	0.48
1:B:347:LEU:HA	1:B:350:ILE:HG22	1.95	0.48
1:C:392:ASN:HD21	1:C:401:PHE:H	1.60	0.48
1:C:997:SER:H	1:C:1014:SER:HG	1.58	0.48
1:C:1822:ILE:HD11	1:C:1827:LEU:HD12	1.96	0.48
1:D:1035:TYR:HB2	1:D:1113:LEU:HD13	1.95	0.48
1:D:1491:ILE:HA	1:D:1494:ILE:HD12	1.94	0.48
1:E:1458:HIS:HA	1:E:1464:GLN:HG2	1.95	0.48
1:E:1822:ILE:HD11	1:E:1827:LEU:HD12	1.96	0.48
1:A:392:ASN:HD21	1:A:401:PHE:H	1.60	0.48
1:A:1368:LYS:HB3	1:A:1428:LEU:HB2	1.96	0.48
1:A:1492:ASP:OD1	1:A:1669:TYR:OH	2.26	0.48
1:A:1545:PHE:CD2	1:A:1546:PRO:HD3	2.48	0.48
1:E:586:TRP:HD1	1:E:634:LEU:HD13	1.77	0.48
1:A:1183:GLU:HB3	1:A:1445:ILE:HG23	1.96	0.48
1:B:1822:ILE:HD11	1:B:1827:LEU:HD12	1.96	0.48
1:C:76:ASN:ND2	1:C:1760:LEU:O	2.46	0.48
1:C:146:GLN:HB2	1:C:1779:ASP:HB2	1.94	0.48
1:E:519:SER:HB2	1:E:522:GLN:HG3	1.94	0.48
1:E:1545:PHE:CD2	1:E:1546:PRO:HD3	2.48	0.48
1:A:2205:VAL:HB	1:A:2373:LEU:HB2	1.96	0.48
1:D:347:LEU:HA	1:D:350:ILE:HG22	1.95	0.48
1:D:1183:GLU:HB3	1:D:1445:ILE:HG23	1.96	0.48
1:E:76:ASN:ND2	1:E:1760:LEU:O	2.46	0.48
1:A:2100:GLN:HE21	1:B:1933:LEU:HD11	1.79	0.48
1:A:2292:TYR:HB3	1:B:2204:THR:HG21	1.96	0.48
1:B:1342:ILE:HB	1:B:1354:VAL:HB	1.96	0.48
1:D:964:GLU:O	1:D:985:ASN:N	2.44	0.48
1:E:1342:ILE:HB	1:E:1354:VAL:HB	1.96	0.48
1:A:420:LYS:HG2	1:A:424:LYS:HE2	1.95	0.47
1:C:1458:HIS:HA	1:C:1464:GLN:HG2	1.95	0.47
1:C:2205:VAL:HB	1:C:2373:LEU:HB2	1.96	0.47
1:D:1318:ASN:ND2	1:D:1327:CYS:O	2.46	0.47

*Continued on next page...*

*Continued from previous page...*

Atom-1	Atom-2	Interatomic distance (Å)	Clash overlap (Å)
1:A:947:GLU:HG3	1:A:1491:ILE:HD11	1.96	0.47
1:B:874:GLU:HB2	1:B:876:ILE:HG22	1.96	0.47
1:C:1491:ILE:HA	1:C:1494:ILE:HD12	1.94	0.47
1:D:1342:ILE:HB	1:D:1354:VAL:HB	1.96	0.47
1:A:2178:GLU:HG3	1:E:1906:PHE:CE1	2.47	0.47
1:B:182:SER:OG	1:B:183:ASP:N	2.44	0.47
1:B:1368:LYS:HB3	1:B:1428:LEU:HB2	1.96	0.47
1:B:1458:HIS:HA	1:B:1464:GLN:HG2	1.95	0.47
1:B:2305:ALA:HB2	1:B:2313:LYS:HB3	1.97	0.47
1:C:21:LEU:N	1:C:51:ASP:OD2	2.47	0.47
1:C:2305:ALA:HB2	1:C:2313:LYS:HB3	1.97	0.47
1:D:586:TRP:CD1	1:D:634:LEU:HD13	2.50	0.47
1:D:1545:PHE:CD2	1:D:1546:PRO:HD3	2.48	0.47
1:B:947:GLU:HG3	1:B:1491:ILE:HD11	1.97	0.47
1:C:586:TRP:CD1	1:C:634:LEU:HD13	2.50	0.47
1:C:947:GLU:HG3	1:C:1491:ILE:HD11	1.97	0.47
1:C:1342:ILE:HB	1:C:1354:VAL:HB	1.96	0.47
1:D:1585:LYS:HG3	1:D:1586:VAL:HG23	1.97	0.47
1:D:2305:ALA:HB2	1:D:2313:LYS:HB3	1.97	0.47
1:E:964:GLU:O	1:E:985:ASN:N	2.44	0.47
1:A:1342:ILE:HB	1:A:1354:VAL:HB	1.96	0.47
1:B:21:LEU:N	1:B:51:ASP:OD2	2.47	0.47
1:B:2282:SER:HB2	1:B:2374:HIS:HB2	1.95	0.47
1:D:28:SER:HB2	1:D:48:LEU:HD22	1.97	0.47
1:E:874:GLU:HB2	1:E:876:ILE:HG22	1.96	0.47
1:E:1368:LYS:HB3	1:E:1428:LEU:HB2	1.96	0.47
1:A:21:LEU:N	1:A:51:ASP:OD2	2.47	0.47
1:A:40:LEU:HD23	1:A:42:TRP:H	1.80	0.47
1:A:1194:HIS:CG	1:B:1681:GLN:HE22	2.33	0.47
1:B:586:TRP:CD1	1:B:634:LEU:HD13	2.50	0.47
1:C:40:LEU:HD23	1:C:42:TRP:H	1.80	0.47
1:C:1521:ASN:HB3	1:C:1524:ILE:HG22	1.96	0.47
1:C:1585:LYS:HG3	1:C:1586:VAL:HG23	1.97	0.47
1:C:2282:SER:HB2	1:C:2374:HIS:HB2	1.95	0.47
1:E:1228:LEU:HD12	1:E:1425:PHE:HD1	1.80	0.47
1:E:1318:ASN:ND2	1:E:1327:CYS:O	2.46	0.47
1:A:586:TRP:CD1	1:A:634:LEU:HD13	2.50	0.47
1:A:874:GLU:HB2	1:A:876:ILE:HG22	1.96	0.47
1:A:1933:LEU:HD11	1:E:2100:GLN:HE21	1.80	0.47
1:B:40:LEU:HD23	1:B:42:TRP:H	1.80	0.47
1:B:964:GLU:O	1:B:985:ASN:N	2.44	0.47

*Continued on next page...*

*Continued from previous page...*

Atom-1	Atom-2	Interatomic distance (Å)	Clash overlap (Å)
1:B:1888:ARG:N	1:B:2334:GLY:O	2.41	0.47
1:B:2356:ASN:ND2	1:C:2265:ASP:O	2.48	0.47
1:D:1521:ASN:HB3	1:D:1524:ILE:HG22	1.96	0.47
1:D:2205:VAL:HB	1:D:2373:LEU:HB2	1.96	0.47
1:E:1183:GLU:HB3	1:E:1445:ILE:HG23	1.95	0.47
1:A:2182:LEU:HD22	1:E:2131:ILE:HG23	1.97	0.47
1:B:42:TRP:HE3	1:B:1441:ASN:HD21	1.63	0.47
1:B:1976:ASP:N	1:B:1976:ASP:OD1	2.48	0.47
1:B:2305:ALA:HB1	1:B:2308:LEU:HB2	1.97	0.47
1:D:2282:SER:HB2	1:D:2374:HIS:HB2	1.95	0.47
1:E:1521:ASN:H	1:E:1525:HIS:HD2	1.63	0.47
1:A:42:TRP:HE3	1:A:1441:ASN:HD21	1.63	0.47
1:A:1521:ASN:HB3	1:A:1524:ILE:HG22	1.96	0.47
1:A:2305:ALA:HB2	1:A:2313:LYS:HB3	1.97	0.47
1:D:1228:LEU:HD12	1:D:1425:PHE:HD1	1.80	0.47
1:E:21:LEU:N	1:E:51:ASP:OD2	2.47	0.47
1:E:42:TRP:HE3	1:E:1441:ASN:HD21	1.63	0.47
1:E:586:TRP:CD1	1:E:634:LEU:HD13	2.50	0.47
1:A:91:GLY:O	1:A:95:GLU:N	2.40	0.47
1:A:216:ASP:HB2	1:A:758:ASN:HD21	1.80	0.47
1:A:299:ARG:HD3	1:A:307:ASN:HB2	1.97	0.47
1:A:436:ARG:NH2	1:B:717:ASP:OD1	2.48	0.47
1:A:1258:ILE:HG13	1:A:1278:VAL:HG22	1.97	0.47
1:B:997:SER:H	1:B:1014:SER:HG	1.59	0.47
1:B:2205:VAL:HB	1:B:2373:LEU:HB2	1.96	0.47
1:C:299:ARG:HD3	1:C:307:ASN:HB2	1.97	0.47
1:D:1368:LYS:HB3	1:D:1428:LEU:HB2	1.96	0.47
1:E:947:GLU:HG3	1:E:1491:ILE:HD11	1.97	0.47
1:E:1258:ILE:HG13	1:E:1278:VAL:HG22	1.97	0.47
1:A:656:THR:HA	1:A:660:ILE:HG22	1.98	0.46
1:A:723:GLN:HG3	1:E:412:LEU:HD22	1.96	0.46
1:A:1521:ASN:H	1:A:1525:HIS:HD2	1.63	0.46
1:B:1228:LEU:HD12	1:B:1425:PHE:HD1	1.80	0.46
1:C:206:GLU:OE2	1:C:243:SER:OG	2.30	0.46
1:C:1368:LYS:HB3	1:C:1428:LEU:HB2	1.96	0.46
1:C:2305:ALA:HB1	1:C:2308:LEU:HB2	1.97	0.46
1:D:21:LEU:N	1:D:51:ASP:OD2	2.47	0.46
1:D:42:TRP:HE3	1:D:1441:ASN:HD21	1.63	0.46
1:D:656:THR:HA	1:D:660:ILE:HG22	1.98	0.46
1:E:299:ARG:HD3	1:E:307:ASN:HB2	1.97	0.46
1:A:1585:LYS:HG3	1:A:1586:VAL:HG23	1.97	0.46

*Continued on next page...*

Continued from previous page...

Atom-1	Atom-2	Interatomic distance (Å)	Clash overlap (Å)
1:A:2017:PHE:HB3	1:B:2017:PHE:HD2	1.79	0.46
1:C:216:ASP:HB2	1:C:758:ASN:HD21	1.80	0.46
1:D:1258:ILE:HG13	1:D:1278:VAL:HG22	1.97	0.46
1:A:1228:LEU:HD12	1:A:1425:PHE:HD1	1.79	0.46
1:A:2305:ALA:HB1	1:A:2308:LEU:HB2	1.96	0.46
1:C:42:TRP:HE3	1:C:1441:ASN:HD21	1.63	0.46
1:C:874:GLU:HB2	1:C:876:ILE:HG22	1.96	0.46
1:D:947:GLU:HG3	1:D:1491:ILE:HD11	1.96	0.46
1:D:1038:ARG:NH1	1:D:1071:ILE:O	2.47	0.46
1:E:2205:VAL:HB	1:E:2373:LEU:HB2	1.96	0.46
1:E:2305:ALA:HB2	1:E:2313:LYS:HB3	1.97	0.46
1:A:2238:GLY:HA3	1:A:2243:GLN:HA	1.98	0.46
1:B:216:ASP:HB2	1:B:758:ASN:HD21	1.80	0.46
1:B:1258:ILE:HG13	1:B:1278:VAL:HG22	1.97	0.46
1:C:238:LEU:HB2	1:C:351:PHE:HB2	1.98	0.46
1:D:1521:ASN:H	1:D:1525:HIS:HD2	1.63	0.46
1:E:656:THR:HA	1:E:660:ILE:HG22	1.98	0.46
1:E:1521:ASN:HB3	1:E:1524:ILE:HG22	1.96	0.46
1:E:1976:ASP:N	1:E:1976:ASP:OD1	2.48	0.46
1:E:2238:GLY:HA3	1:E:2243:GLN:HA	1.98	0.46
1:B:1164:THR:HG23	1:B:1173:ARG:HH12	1.81	0.46
1:B:1521:ASN:HB3	1:B:1524:ILE:HG22	1.96	0.46
1:C:28:SER:HB2	1:C:48:LEU:HD22	1.97	0.46
1:D:40:LEU:HD23	1:D:42:TRP:H	1.80	0.46
1:D:1164:THR:HG23	1:D:1173:ARG:HH12	1.81	0.46
1:D:2305:ALA:HB1	1:D:2308:LEU:HB2	1.96	0.46
1:A:238:LEU:HB2	1:A:351:PHE:HB2	1.98	0.46
1:B:28:SER:HB2	1:B:48:LEU:HD22	1.97	0.46
1:C:971:ASP:O	1:C:1177:ARG:NE	2.47	0.46
1:D:299:ARG:HD3	1:D:307:ASN:HB2	1.97	0.46
1:E:216:ASP:HB2	1:E:758:ASN:HD21	1.80	0.46
1:E:1164:THR:HG23	1:E:1173:ARG:HH12	1.81	0.46
1:E:2305:ALA:HB1	1:E:2308:LEU:HB2	1.96	0.46
1:A:555:LYS:NZ	1:A:600:GLU:OE2	2.38	0.46
1:B:598:THR:H	1:B:601:LYS:HB2	1.81	0.46
1:C:294:LEU:HA	1:C:297:PHE:HD2	1.81	0.46
1:C:598:THR:H	1:C:601:LYS:HB2	1.81	0.46
1:C:656:THR:HA	1:C:660:ILE:HG22	1.98	0.46
1:C:2214:LEU:HB2	1:C:2218:SER:HB2	1.98	0.46
1:E:40:LEU:HD23	1:E:42:TRP:H	1.80	0.46
1:A:28:SER:HB2	1:A:48:LEU:HD22	1.97	0.46

Continued on next page...



*Continued from previous page...*

Atom-1	Atom-2	Interatomic distance (Å)	Clash overlap (Å)
1:C:1038:ARG:NH1	1:C:1071:ILE:O	2.47	0.46
1:C:1228:LEU:HD12	1:C:1425:PHE:HD1	1.80	0.46
1:E:1585:LYS:HG3	1:E:1586:VAL:HG23	1.97	0.46
1:B:1038:ARG:NH1	1:B:1071:ILE:O	2.47	0.46
1:B:2228:LEU:HD21	1:B:2236:SER:HA	1.98	0.46
1:D:294:LEU:HA	1:D:297:PHE:HD2	1.81	0.46
1:D:874:GLU:HB2	1:D:876:ILE:HG22	1.96	0.46
1:D:971:ASP:O	1:D:1177:ARG:NE	2.47	0.46
1:B:1521:ASN:H	1:B:1525:HIS:HD2	1.63	0.46
1:D:216:ASP:HB2	1:D:758:ASN:HD21	1.80	0.46
1:E:53:GLN:HG3	1:E:57:LYS:HE3	1.98	0.46
1:E:294:LEU:HA	1:E:297:PHE:HD2	1.81	0.46
1:A:1575:ASN:ND2	1:A:1605:ASP:OD2	2.37	0.45
1:B:656:THR:HA	1:B:660:ILE:HG22	1.98	0.45
1:B:1585:LYS:HG3	1:B:1586:VAL:HG23	1.97	0.45
1:C:1258:ILE:HG13	1:C:1278:VAL:HG22	1.97	0.45
1:D:2214:LEU:HB2	1:D:2218:SER:HB2	1.98	0.45
1:E:28:SER:HB2	1:E:48:LEU:HD22	1.97	0.45
1:E:91:GLY:O	1:E:95:GLU:N	2.40	0.45
1:A:2214:LEU:HB2	1:A:2218:SER:HB2	1.98	0.45
1:C:412:LEU:O	1:D:764:GLN:NE2	2.50	0.45
1:A:53:GLN:HG3	1:A:57:LYS:HE3	1.98	0.45
1:B:2214:LEU:HB2	1:B:2218:SER:HB2	1.98	0.45
1:C:91:GLY:O	1:C:95:GLU:N	2.40	0.45
1:C:971:ASP:OD1	1:C:1177:ARG:NH2	2.50	0.45
1:C:2228:LEU:HD21	1:C:2236:SER:HA	1.98	0.45
1:C:2238:GLY:HA3	1:C:2243:GLN:HA	1.98	0.45
1:E:598:THR:H	1:E:601:LYS:HB2	1.81	0.45
1:B:294:LEU:HA	1:B:297:PHE:HD2	1.81	0.45
1:D:971:ASP:OD1	1:D:1177:ARG:NH2	2.50	0.45
1:A:2228:LEU:HD21	1:A:2236:SER:HA	1.98	0.45
1:D:2228:LEU:HD21	1:D:2236:SER:HA	1.98	0.45
1:A:26:HIS:CE1	1:A:30:ASN:HB3	2.52	0.45
1:A:1058:VAL:H	1:E:1052:GLN:NE2	2.14	0.45
1:A:1164:THR:HG23	1:A:1173:ARG:HH12	1.81	0.45
1:B:26:HIS:CE1	1:B:30:ASN:HB3	2.52	0.45
1:B:362:ILE:HD11	1:B:367:ALA:HB2	1.99	0.45
1:B:2238:GLY:HA3	1:B:2243:GLN:HA	1.98	0.45
1:C:26:HIS:CE1	1:C:30:ASN:HB3	2.52	0.45
1:C:1164:THR:HG23	1:C:1173:ARG:HH12	1.81	0.45
1:C:1521:ASN:H	1:C:1525:HIS:HD2	1.63	0.45

*Continued on next page...*

*Continued from previous page...*

Atom-1	Atom-2	Interatomic distance (Å)	Clash overlap (Å)
1:D:2302:GLY:N	1:D:2349:THR:O	2.49	0.45
1:E:971:ASP:O	1:E:1177:ARG:NE	2.47	0.45
1:C:933:LEU:HD13	1:C:1649:MET:HE2	1.99	0.45
1:B:299:ARG:HD3	1:B:307:ASN:HB2	1.97	0.45
1:B:1203:GLN:HE21	1:B:1231:ILE:HD11	1.82	0.45
1:C:2302:GLY:N	1:C:2349:THR:O	2.50	0.45
1:D:1203:GLN:HE21	1:D:1231:ILE:HD11	1.82	0.45
1:E:1601:PRO:HB2	1:E:1622:ILE:HG13	1.99	0.45
1:E:2214:LEU:HB2	1:E:2218:SER:HB2	1.98	0.45
1:E:2228:LEU:HD21	1:E:2236:SER:HA	1.98	0.45
1:A:933:LEU:HD13	1:A:1649:MET:HE2	1.99	0.45
1:B:2302:GLY:N	1:B:2349:THR:O	2.50	0.45
1:A:294:LEU:HA	1:A:297:PHE:HD2	1.81	0.45
1:B:238:LEU:HB2	1:B:351:PHE:HB2	1.98	0.45
1:E:971:ASP:OD1	1:E:1177:ARG:NH2	2.50	0.45
1:E:2302:GLY:N	1:E:2349:THR:O	2.50	0.45
1:A:971:ASP:OD1	1:A:1177:ARG:NH2	2.50	0.44
1:A:1194:HIS:O	1:B:1681:GLN:NE2	2.50	0.44
1:D:26:HIS:CE1	1:D:30:ASN:HB3	2.52	0.44
1:E:238:LEU:HB2	1:E:351:PHE:HB2	1.98	0.44
1:E:362:ILE:HD11	1:E:367:ALA:HB2	1.99	0.44
1:B:971:ASP:OD1	1:B:1177:ARG:NH2	2.50	0.44
1:B:1601:PRO:HB2	1:B:1622:ILE:HG13	1.99	0.44
1:B:2211:TYR:O	1:B:2218:SER:OG	2.35	0.44
1:C:1976:ASP:OD1	1:C:1976:ASP:N	2.48	0.44
1:D:598:THR:H	1:D:601:LYS:HB2	1.81	0.44
1:A:598:THR:H	1:A:601:LYS:HB2	1.81	0.44
1:A:1976:ASP:OD1	1:A:1976:ASP:N	2.48	0.44
1:A:2302:GLY:N	1:A:2349:THR:O	2.50	0.44
1:B:53:GLN:HG3	1:B:57:LYS:HE3	1.98	0.44
1:C:53:GLN:HG3	1:C:57:LYS:HE3	1.98	0.44
1:C:467:ALA:HB2	1:C:477:LEU:HD22	2.00	0.44
1:D:238:LEU:HB2	1:D:351:PHE:HB2	1.98	0.44
1:D:2211:TYR:O	1:D:2218:SER:OG	2.35	0.44
1:C:91:GLY:HA2	1:C:94:SER:HB3	2.00	0.44
1:E:26:HIS:CE1	1:E:30:ASN:HB3	2.52	0.44
1:A:1066:LEU:HB3	1:A:1083:PHE:HB2	2.00	0.44
1:E:152:GLN:NE2	1:E:155:MET:SD	2.91	0.44
1:E:392:ASN:ND2	1:E:401:PHE:H	2.16	0.44
1:A:1203:GLN:HE21	1:A:1231:ILE:HD11	1.82	0.44
1:B:206:GLU:OE2	1:B:243:SER:OG	2.30	0.44

*Continued on next page...*

*Continued from previous page...*

Atom-1	Atom-2	Interatomic distance (Å)	Clash overlap (Å)
1:B:957:PHE:HE1	1:B:1638:TYR:HB3	1.83	0.44
1:C:1325:ASP:OD1	1:C:1325:ASP:N	2.51	0.44
1:D:397:ASN:HD21	1:E:792:ILE:HD12	1.83	0.44
1:D:412:LEU:O	1:E:764:GLN:NE2	2.50	0.44
1:D:2238:GLY:HA3	1:D:2243:GLN:HA	1.98	0.44
1:E:467:ALA:HB2	1:E:477:LEU:HD22	1.99	0.44
1:C:152:GLN:NE2	1:C:155:MET:SD	2.91	0.44
1:C:1184:ILE:HD11	1:C:1220:LEU:HD21	2.00	0.44
1:D:53:GLN:HG3	1:D:57:LYS:HE3	1.98	0.44
1:D:91:GLY:HA2	1:D:94:SER:HB3	2.00	0.44
1:E:933:LEU:HD13	1:E:1649:MET:HE2	2.00	0.44
1:E:1325:ASP:OD1	1:E:1325:ASP:N	2.51	0.44
1:B:472:LEU:HD23	1:B:476:GLU:HB3	2.00	0.44
1:C:756:ALA:HB2	1:C:763:PRO:HG3	2.00	0.44
1:E:762:SER:HA	1:E:763:PRO:HD3	1.87	0.44
1:E:1066:LEU:HB3	1:E:1083:PHE:HB2	2.00	0.44
1:A:598:THR:HB	1:A:601:LYS:H	1.83	0.44
1:A:2017:PHE:HB3	1:B:2017:PHE:CD2	2.52	0.44
1:A:2200:GLU:HB2	1:E:2325:GLY:O	2.18	0.44
1:B:152:GLN:NE2	1:B:155:MET:SD	2.91	0.44
1:C:231:LEU:HG	1:C:731:TYR:CZ	2.53	0.44
1:C:362:ILE:HD11	1:C:367:ALA:HB2	1.99	0.44
1:C:2211:TYR:O	1:C:2218:SER:OG	2.35	0.44
1:D:244:ILE:O	1:D:774:TYR:OH	2.31	0.44
1:A:362:ILE:HD11	1:A:367:ALA:HB2	1.99	0.43
1:A:1601:PRO:HB2	1:A:1622:ILE:HG13	1.99	0.43
1:A:1810:SER:O	1:A:1813:THR:OG1	2.29	0.43
1:B:1325:ASP:N	1:B:1325:ASP:OD1	2.51	0.43
1:C:1601:PRO:HB2	1:C:1622:ILE:HG13	1.99	0.43
1:D:467:ALA:HB2	1:D:477:LEU:HD22	1.99	0.43
1:D:756:ALA:HB2	1:D:763:PRO:HG3	2.00	0.43
1:D:933:LEU:HB2	1:D:1649:MET:HE1	2.00	0.43
1:E:1184:ILE:HD11	1:E:1220:LEU:HD21	2.00	0.43
1:A:971:ASP:O	1:A:1177:ARG:NE	2.47	0.43
1:A:1038:ARG:NH1	1:A:1071:ILE:O	2.47	0.43
1:B:756:ALA:HB2	1:B:763:PRO:HG3	2.00	0.43
1:B:2301:TYR:HB2	1:B:2339:PHE:HE1	1.83	0.43
1:C:1203:GLN:HE21	1:C:1231:ILE:HD11	1.82	0.43
1:D:206:GLU:OE2	1:D:243:SER:OG	2.30	0.43
1:D:231:LEU:HG	1:D:731:TYR:CZ	2.53	0.43
1:D:362:ILE:HD11	1:D:367:ALA:HB2	1.99	0.43

*Continued on next page...*

*Continued from previous page...*

Atom-1	Atom-2	Interatomic distance (Å)	Clash overlap (Å)
1:D:1066:LEU:HB3	1:D:1083:PHE:HB2	2.00	0.43
1:E:598:THR:HB	1:E:601:LYS:H	1.83	0.43
1:E:756:ALA:HB2	1:E:763:PRO:HG3	2.00	0.43
1:E:1245:LEU:HD11	1:E:1296:HIS:HB2	2.00	0.43
1:E:1500:GLN:O	1:E:1690:ARG:NH1	2.51	0.43
1:A:472:LEU:HD23	1:A:476:GLU:HB3	2.00	0.43
1:A:756:ALA:HB2	1:A:763:PRO:HG3	2.00	0.43
1:A:1245:LEU:HD11	1:A:1296:HIS:HB2	2.00	0.43
1:A:2301:TYR:HB2	1:A:2339:PHE:HE1	1.83	0.43
1:B:231:LEU:HG	1:B:731:TYR:CZ	2.53	0.43
1:B:598:THR:HB	1:B:601:LYS:H	1.83	0.43
1:C:1245:LEU:HD11	1:C:1296:HIS:HB2	2.00	0.43
1:C:2301:TYR:HB2	1:C:2339:PHE:HE1	1.83	0.43
1:D:472:LEU:HD23	1:D:476:GLU:HB3	2.00	0.43
1:D:1245:LEU:HD11	1:D:1296:HIS:HB2	2.00	0.43
1:A:392:ASN:ND2	1:A:401:PHE:H	2.16	0.43
1:A:957:PHE:HE1	1:A:1638:TYR:HB3	1.83	0.43
1:C:472:LEU:HD23	1:C:476:GLU:HB3	2.00	0.43
1:C:598:THR:HB	1:C:601:LYS:H	1.83	0.43
1:E:91:GLY:HA2	1:E:94:SER:HB3	2.00	0.43
1:B:1184:ILE:HD11	1:B:1220:LEU:HD21	2.00	0.43
1:D:152:GLN:NE2	1:D:155:MET:SD	2.91	0.43
1:D:957:PHE:HE1	1:D:1638:TYR:HB3	1.83	0.43
1:D:1976:ASP:OD1	1:D:1976:ASP:N	2.48	0.43
1:E:957:PHE:HE1	1:E:1638:TYR:HB3	1.83	0.43
1:E:2229:LEU:HD21	1:E:2362:LYS:HG3	2.01	0.43
1:A:2083:LEU:HD13	1:A:2086:ARG:HH21	1.84	0.43
1:B:244:ILE:O	1:B:774:TYR:OH	2.31	0.43
1:B:467:ALA:HB2	1:B:477:LEU:HD22	2.00	0.43
1:C:2083:LEU:HD13	1:C:2086:ARG:HH21	1.84	0.43
1:D:1211:ILE:HG12	1:D:1224:ILE:HG22	2.01	0.43
1:D:2083:LEU:HD13	1:D:2086:ARG:HH21	1.84	0.43
1:A:2229:LEU:HD21	1:A:2362:LYS:HG3	2.01	0.43
1:B:392:ASN:ND2	1:B:401:PHE:H	2.16	0.43
1:B:593:SER:OG	1:B:626:GLN:OE1	2.29	0.43
1:B:1066:LEU:HB3	1:B:1083:PHE:HB2	2.00	0.43
1:B:1245:LEU:HD11	1:B:1296:HIS:HB2	2.00	0.43
1:D:1500:GLN:O	1:D:1690:ARG:NH1	2.51	0.43
1:E:231:LEU:HG	1:E:731:TYR:CZ	2.53	0.43
1:B:2083:LEU:HD13	1:B:2086:ARG:HH21	1.84	0.43
1:C:1756:GLN:HA	1:C:1759:HIS:CD2	2.54	0.43

*Continued on next page...*

*Continued from previous page...*

Atom-1	Atom-2	Interatomic distance (Å)	Clash overlap (Å)
1:D:1601:PRO:HB2	1:D:1622:ILE:HG13	1.99	0.43
1:D:2131:ILE:HG23	1:E:2182:LEU:HD22	2.01	0.43
1:E:2083:LEU:HD13	1:E:2086:ARG:HH21	1.84	0.43
1:A:231:LEU:HG	1:A:731:TYR:CZ	2.53	0.43
1:B:91:GLY:O	1:B:95:GLU:N	2.40	0.43
1:B:91:GLY:HA2	1:B:94:SER:HB3	2.00	0.43
1:C:24:ILE:HD13	1:C:55:GLU:HG2	2.01	0.43
1:C:206:GLU:HA	1:C:209:ARG:HG2	2.01	0.43
1:C:1500:GLN:O	1:C:1690:ARG:NH1	2.51	0.43
1:D:279:MET:HA	1:D:280:PRO:HD3	1.88	0.43
1:A:467:ALA:HB2	1:A:477:LEU:HD22	1.99	0.43
1:A:1756:GLN:HA	1:A:1759:HIS:CD2	2.54	0.43
1:B:24:ILE:HD13	1:B:55:GLU:HG2	2.01	0.43
1:B:1756:GLN:HA	1:B:1759:HIS:CD2	2.54	0.43
1:B:2229:LEU:HD21	1:B:2362:LYS:HG3	2.01	0.43
1:D:392:ASN:ND2	1:D:401:PHE:H	2.16	0.43
1:D:1184:ILE:HD11	1:D:1220:LEU:HD21	2.00	0.43
1:D:1756:GLN:HA	1:D:1759:HIS:CD2	2.54	0.43
1:D:2301:TYR:HB2	1:D:2339:PHE:HE1	1.83	0.43
1:E:1121:LYS:O	1:E:1165:ASN:N	2.52	0.43
1:E:1203:GLN:HE21	1:E:1231:ILE:HD11	1.82	0.43
1:A:206:GLU:HA	1:A:209:ARG:HG2	2.01	0.42
1:A:1184:ILE:HD11	1:A:1220:LEU:HD21	2.00	0.42
1:A:1500:GLN:O	1:A:1690:ARG:NH1	2.51	0.42
1:A:2032:ALA:HB1	1:B:2002:HIS:CE1	2.54	0.42
1:B:63:GLU:HG2	1:B:67:LEU:HD23	2.01	0.42
1:C:768:PRO:HA	1:C:771:ALA:HB3	2.01	0.42
1:C:1211:ILE:HG12	1:C:1224:ILE:HG22	2.01	0.42
1:C:2037:ILE:HD12	1:C:2037:ILE:HA	1.95	0.42
1:D:24:ILE:HD13	1:D:55:GLU:HG2	2.01	0.42
1:E:1265:ASN:O	1:E:1269:SER:OG	2.30	0.42
1:A:1325:ASP:OD1	1:A:1325:ASP:N	2.51	0.42
1:C:392:ASN:ND2	1:C:401:PHE:H	2.16	0.42
1:C:2356:ASN:ND2	1:D:2265:ASP:O	2.52	0.42
1:D:65:ARG:HH12	1:D:91:GLY:HA3	1.84	0.42
1:D:1121:LYS:O	1:D:1165:ASN:N	2.52	0.42
1:D:2037:ILE:HD12	1:D:2037:ILE:HA	1.95	0.42
1:D:2229:LEU:HD21	1:D:2362:LYS:HG3	2.01	0.42
1:E:65:ARG:HH12	1:E:91:GLY:HA3	1.84	0.42
1:E:472:LEU:HD23	1:E:476:GLU:HB3	2.00	0.42
1:A:63:GLU:HG2	1:A:67:LEU:HD23	2.01	0.42

*Continued on next page...*

*Continued from previous page...*

Atom-1	Atom-2	Interatomic distance (Å)	Clash overlap (Å)
1:A:91:GLY:HA2	1:A:94:SER:HB3	2.00	0.42
1:A:2013:ASN:OD1	1:A:2013:ASN:N	2.51	0.42
1:B:2262:LEU:HD22	1:B:2344:ILE:HD12	2.02	0.42
1:C:1066:LEU:HB3	1:C:1083:PHE:HB2	2.00	0.42
1:E:220:GLU:O	1:E:224:LYS:CB	2.68	0.42
1:A:152:GLN:NE2	1:A:155:MET:SD	2.91	0.42
1:A:1121:LYS:O	1:A:1165:ASN:N	2.52	0.42
1:B:1500:GLN:O	1:B:1690:ARG:NH1	2.51	0.42
1:C:1121:LYS:O	1:C:1165:ASN:N	2.52	0.42
1:C:1578:TYR:HD1	1:C:1592:ARG:HB3	1.84	0.42
1:D:1578:TYR:HD1	1:D:1592:ARG:HB3	1.84	0.42
1:D:2156:ASP:OD1	1:D:2156:ASP:N	2.53	0.42
1:E:2301:TYR:HB2	1:E:2339:PHE:HE1	1.83	0.42
1:A:220:GLU:O	1:A:224:LYS:CB	2.68	0.42
1:A:2262:LEU:HD22	1:A:2344:ILE:HD12	2.02	0.42
1:B:206:GLU:HA	1:B:209:ARG:HG2	2.01	0.42
1:B:1121:LYS:O	1:B:1165:ASN:N	2.52	0.42
1:B:2156:ASP:N	1:B:2156:ASP:OD1	2.53	0.42
1:C:480:LEU:HD11	1:C:509:LEU:HD22	2.02	0.42
1:C:957:PHE:HE1	1:C:1638:TYR:HB3	1.83	0.42
1:D:768:PRO:HA	1:D:771:ALA:HB3	2.01	0.42
1:E:1578:TYR:HD1	1:E:1592:ARG:HB3	1.84	0.42
1:A:1578:TYR:HD1	1:A:1592:ARG:HB3	1.84	0.42
1:B:215:GLN:NE2	1:B:758:ASN:O	2.53	0.42
1:B:436:ARG:NH2	1:C:717:ASP:OD1	2.52	0.42
1:B:933:LEU:HD13	1:B:1649:MET:HE2	2.01	0.42
1:C:215:GLN:NE2	1:C:758:ASN:O	2.53	0.42
1:C:2229:LEU:HD21	1:C:2362:LYS:HG3	2.01	0.42
1:C:2262:LEU:HD22	1:C:2344:ILE:HD12	2.02	0.42
1:E:63:GLU:HG2	1:E:67:LEU:HD23	2.01	0.42
1:E:2211:TYR:O	1:E:2218:SER:OG	2.35	0.42
1:E:2262:LEU:HD22	1:E:2344:ILE:HD12	2.02	0.42
1:A:215:GLN:NE2	1:A:758:ASN:O	2.53	0.42
1:B:768:PRO:HA	1:B:771:ALA:HB3	2.01	0.42
1:D:1578:TYR:HH	1:D:1590:PHE:H	1.63	0.42
1:A:24:ILE:HD13	1:A:55:GLU:HG2	2.01	0.42
1:B:1578:TYR:HD1	1:B:1592:ARG:HB3	1.85	0.42
1:C:1575:ASN:ND2	1:C:1605:ASP:OD2	2.37	0.42
1:C:2156:ASP:OD1	1:C:2156:ASP:N	2.53	0.42
1:D:598:THR:HB	1:D:601:LYS:H	1.83	0.42
1:D:605:TRP:CE3	1:D:624:ILE:HG13	2.55	0.42

*Continued on next page...*

*Continued from previous page...*

Atom-1	Atom-2	Interatomic distance (Å)	Clash overlap (Å)
1:E:24:ILE:HD13	1:E:55:GLU:HG2	2.01	0.42
1:E:69:ARG:NH1	1:E:100:ALA:HA	2.35	0.42
1:E:167:GLU:HG2	1:E:171:LYS:HE3	2.02	0.42
1:A:1308:TRP:HA	1:A:1315:SER:HA	2.02	0.42
1:A:2211:TYR:O	1:A:2218:SER:OG	2.35	0.42
1:B:605:TRP:CE3	1:B:624:ILE:HG13	2.55	0.42
1:C:220:GLU:O	1:C:224:LYS:CB	2.68	0.42
1:D:206:GLU:HA	1:D:209:ARG:HG2	2.00	0.42
1:E:206:GLU:HA	1:E:209:ARG:HG2	2.01	0.42
1:E:1308:TRP:HA	1:E:1315:SER:HA	2.02	0.42
1:A:69:ARG:NH1	1:A:100:ALA:HA	2.35	0.42
1:A:1381:LEU:HD23	1:A:1381:LEU:HA	1.93	0.42
1:B:2032:ALA:HB1	1:C:2002:HIS:CE1	2.55	0.42
1:D:91:GLY:O	1:D:95:GLU:N	2.40	0.42
1:D:215:GLN:NE2	1:D:758:ASN:O	2.53	0.42
1:D:2160:ARG:HH22	1:D:2164:PRO:HD3	1.85	0.42
1:A:65:ARG:HH12	1:A:91:GLY:HA3	1.84	0.41
1:A:1211:ILE:HG12	1:A:1224:ILE:HG22	2.01	0.41
1:A:2276:ARG:HG2	1:A:2379:ILE:HG12	2.02	0.41
1:B:69:ARG:NH1	1:B:100:ALA:HA	2.35	0.41
1:B:1308:TRP:HA	1:B:1315:SER:HA	2.02	0.41
1:B:1761:LEU:HA	1:B:1761:LEU:HD23	1.84	0.41
1:C:69:ARG:NH1	1:C:100:ALA:HA	2.35	0.41
1:C:95:GLU:HA	1:C:1814:LEU:HD13	2.02	0.41
1:C:593:SER:OG	1:C:626:GLN:OE1	2.28	0.41
1:C:2131:ILE:HG23	1:D:2182:LEU:HD22	2.01	0.41
1:D:220:GLU:O	1:D:224:LYS:CB	2.68	0.41
1:D:1265:ASN:O	1:D:1269:SER:OG	2.29	0.41
1:D:2262:LEU:HD22	1:D:2344:ILE:HD12	2.02	0.41
1:E:215:GLN:NE2	1:E:758:ASN:O	2.53	0.41
1:E:486:GLU:OE2	1:E:505:ARG:NH1	2.53	0.41
1:C:63:GLU:HG2	1:C:67:LEU:HD23	2.01	0.41
1:D:69:ARG:NH1	1:D:100:ALA:HA	2.35	0.41
1:D:1325:ASP:OD1	1:D:1325:ASP:N	2.51	0.41
1:D:2276:ARG:HG2	1:D:2379:ILE:HG12	2.02	0.41
1:D:2300:SER:OG	1:D:2301:TYR:N	2.53	0.41
1:D:2356:ASN:ND2	1:E:2265:ASP:O	2.53	0.41
1:A:486:GLU:OE2	1:A:505:ARG:NH1	2.53	0.41
1:A:622:GLU:HA	1:A:625:ILE:HG22	2.03	0.41
1:B:130:HIS:CD2	1:B:132:SER:H	2.39	0.41
1:B:220:GLU:O	1:B:224:LYS:CB	2.68	0.41

*Continued on next page...*

*Continued from previous page...*

Atom-1	Atom-2	Interatomic distance (Å)	Clash overlap (Å)
1:B:2269:GLU:HG2	1:B:2271:GLN:HG2	2.03	0.41
1:E:160:SER:O	1:E:163:SER:OG	2.31	0.41
1:E:622:GLU:HA	1:E:625:ILE:HG22	2.02	0.41
1:E:768:PRO:HA	1:E:771:ALA:HB3	2.01	0.41
1:E:1381:LEU:HD23	1:E:1381:LEU:HA	1.93	0.41
1:E:1756:GLN:HA	1:E:1759:HIS:CD2	2.54	0.41
1:E:2156:ASP:N	1:E:2156:ASP:OD1	2.53	0.41
1:E:2300:SER:OG	1:E:2301:TYR:N	2.53	0.41
1:A:130:HIS:CD2	1:A:132:SER:H	2.39	0.41
1:A:2017:PHE:HD2	1:E:2017:PHE:HB3	1.84	0.41
1:B:2160:ARG:HH22	1:B:2164:PRO:HD3	1.85	0.41
1:C:65:ARG:HH12	1:C:91:GLY:HA3	1.85	0.41
1:C:440:ILE:HD11	1:C:478:TYR:HB2	2.03	0.41
1:C:1308:TRP:HA	1:C:1315:SER:HA	2.02	0.41
1:C:2276:ARG:HG2	1:C:2379:ILE:HG12	2.02	0.41
1:D:167:GLU:HG2	1:D:171:LYS:HE3	2.02	0.41
1:D:486:GLU:OE2	1:D:505:ARG:NH1	2.53	0.41
1:D:1308:TRP:HA	1:D:1315:SER:HA	2.02	0.41
1:E:919:PRO:HD3	1:E:1726:ARG:HH21	1.86	0.41
1:E:2276:ARG:HG2	1:E:2379:ILE:HG12	2.02	0.41
1:A:605:TRP:CE3	1:A:624:ILE:HG13	2.55	0.41
1:A:2160:ARG:HH22	1:A:2164:PRO:HD3	1.85	0.41
1:A:2279:LYS:HG2	1:E:2327:PHE:CE2	2.56	0.41
1:C:130:HIS:CD2	1:C:132:SER:H	2.39	0.41
1:C:1503:GLN:OE1	1:C:1626:SER:OG	2.33	0.41
1:C:2300:SER:OG	1:C:2301:TYR:N	2.53	0.41
1:D:919:PRO:HD3	1:D:1726:ARG:HH21	1.86	0.41
1:E:480:LEU:HD11	1:E:509:LEU:HD22	2.02	0.41
1:E:1122:GLU:HG3	1:E:1165:ASN:HD22	1.86	0.41
1:A:768:PRO:HA	1:A:771:ALA:HB3	2.01	0.41
1:A:1265:ASN:HD22	1:A:1343:TYR:HE1	1.69	0.41
1:A:1566:ARG:CZ	1:A:1595:LYS:HB2	2.51	0.41
1:A:2300:SER:OG	1:A:2301:TYR:N	2.53	0.41
1:C:167:GLU:HG2	1:C:171:LYS:HE3	2.02	0.41
1:C:249:PHE:O	1:C:253:THR:OG1	2.23	0.41
1:D:221:GLN:NE2	1:D:754:ASN:HB3	2.36	0.41
1:D:1122:GLU:HG3	1:D:1165:ASN:HD22	1.86	0.41
1:D:1566:ARG:CZ	1:D:1595:LYS:HB2	2.51	0.41
1:E:221:GLN:NE2	1:E:754:ASN:HB3	2.36	0.41
1:E:1211:ILE:HG12	1:E:1224:ILE:HG22	2.01	0.41
1:B:971:ASP:O	1:B:1177:ARG:NE	2.47	0.41

*Continued on next page...*



Continued from previous page...

Atom-1	Atom-2	Interatomic distance (Å)	Clash overlap (Å)
1:B:1211:ILE:HG12	1:B:1224:ILE:HG22	2.01	0.41
1:B:1575:ASN:OD1	1:B:1575:ASN:N	2.53	0.41
1:B:2300:SER:OG	1:B:2301:TYR:N	2.53	0.41
1:D:339:GLU:O	1:D:341:ASN:N	2.54	0.41
1:D:440:ILE:HD11	1:D:478:TYR:HB2	2.03	0.41
1:D:1575:ASN:N	1:D:1575:ASN:OD1	2.53	0.41
1:A:1122:GLU:HG3	1:A:1165:ASN:HD22	1.86	0.41
1:B:440:ILE:HD11	1:B:478:TYR:HB2	2.03	0.41
1:B:480:LEU:HD11	1:B:509:LEU:HD22	2.02	0.41
1:B:987:LYS:HZ3	1:B:1481:ARG:HH12	1.69	0.41
1:B:2276:ARG:HG2	1:B:2379:ILE:HG12	2.02	0.41
1:D:63:GLU:HG2	1:D:67:LEU:HD23	2.01	0.41
1:D:210:LYS:NZ	1:D:805:THR:HG22	2.36	0.41
1:D:480:LEU:HD11	1:D:509:LEU:HD22	2.02	0.41
1:E:2160:ARG:HH22	1:E:2164:PRO:HD3	1.85	0.41
1:A:244:ILE:O	1:A:774:TYR:OH	2.30	0.41
1:A:480:LEU:HD11	1:A:509:LEU:HD22	2.02	0.41
1:A:592:PRO:HB2	1:A:593:SER:H	1.75	0.41
1:A:792:ILE:HD12	1:E:397:ASN:HD21	1.86	0.41
1:A:1575:ASN:N	1:A:1575:ASN:OD1	2.53	0.41
1:B:592:PRO:HB2	1:B:593:SER:H	1.75	0.41
1:B:791:ALA:O	1:B:795:THR:OG1	2.34	0.41
1:C:622:GLU:HA	1:C:625:ILE:HG22	2.03	0.41
1:C:2269:GLU:HG2	1:C:2271:GLN:HG2	2.03	0.41
1:D:1052:GLN:NE2	1:E:1058:VAL:H	2.13	0.41
1:D:1934:ILE:HD12	1:D:1934:ILE:HA	1.97	0.41
1:D:2228:LEU:HB3	1:D:2246:LEU:HD11	2.03	0.41
1:D:2327:PHE:CZ	1:E:2200:GLU:HB3	2.55	0.41
1:E:130:HIS:CD2	1:E:132:SER:H	2.39	0.41
1:E:244:ILE:O	1:E:774:TYR:OH	2.31	0.41
1:E:339:GLU:O	1:E:341:ASN:N	2.54	0.41
1:E:1427:ALA:HB3	1:E:1435:LEU:HB2	2.03	0.41
1:E:1758:LEU:HD23	1:E:1758:LEU:HA	1.91	0.41
1:A:95:GLU:HA	1:A:1814:LEU:HD13	2.02	0.41
1:A:167:GLU:HG2	1:A:171:LYS:HE3	2.02	0.41
1:A:919:PRO:HD3	1:A:1726:ARG:HH21	1.86	0.41
1:A:2156:ASP:OD1	1:A:2156:ASP:N	2.53	0.41
1:B:1692:LEU:HD23	1:B:1692:LEU:HA	1.92	0.41
1:C:193:PHE:HD2	1:C:199:ILE:HD11	1.86	0.41
1:C:339:GLU:O	1:C:341:ASN:N	2.54	0.41
1:C:1122:GLU:HG3	1:C:1165:ASN:HD22	1.86	0.41

Continued on next page...

*Continued from previous page...*

Atom-1	Atom-2	Interatomic distance (Å)	Clash overlap (Å)
1:C:2160:ARG:HH22	1:C:2164:PRO:HD3	1.85	0.41
1:E:440:ILE:HD11	1:E:478:TYR:HB2	2.03	0.41
1:E:1265:ASN:HD22	1:E:1343:TYR:HE1	1.69	0.41
1:A:762:SER:HA	1:A:763:PRO:HD3	1.87	0.40
1:B:167:GLU:HG2	1:B:171:LYS:HE3	2.02	0.40
1:B:221:GLN:NE2	1:B:754:ASN:HB3	2.36	0.40
1:B:1566:ARG:CZ	1:B:1595:LYS:HB2	2.51	0.40
1:C:397:ASN:HD21	1:D:792:ILE:HD12	1.84	0.40
1:C:486:GLU:OE2	1:C:505:ARG:NH1	2.53	0.40
1:C:1194:HIS:CG	1:D:1681:GLN:HE22	2.39	0.40
1:C:1566:ARG:CZ	1:C:1595:LYS:HB2	2.51	0.40
1:D:95:GLU:HA	1:D:1814:LEU:HD13	2.02	0.40
1:D:2180:LEU:HD23	1:D:2180:LEU:HA	1.89	0.40
1:A:206:GLU:OE2	1:A:243:SER:OG	2.30	0.40
1:A:440:ILE:HD11	1:A:478:TYR:HB2	2.03	0.40
1:C:210:LYS:NZ	1:C:805:THR:HG22	2.36	0.40
1:C:605:TRP:CE3	1:C:624:ILE:HG13	2.55	0.40
1:C:1316:LEU:HD22	1:C:1330:ASP:HA	2.04	0.40
1:E:592:PRO:HB2	1:E:593:SER:H	1.75	0.40
1:A:193:PHE:CZ	1:A:195:PRO:HD2	2.57	0.40
1:A:193:PHE:HD2	1:A:199:ILE:HD11	1.86	0.40
1:A:221:GLN:NE2	1:A:754:ASN:HB3	2.36	0.40
1:A:339:GLU:O	1:A:341:ASN:N	2.54	0.40
1:A:1564:LEU:HA	1:A:1565:PRO:HD3	1.88	0.40
1:B:976:ASP:HA	1:B:1468:TRP:HZ2	1.87	0.40
1:C:2228:LEU:HB3	1:C:2246:LEU:HD11	2.03	0.40
1:D:592:PRO:HB2	1:D:593:SER:H	1.75	0.40
1:D:2269:GLU:HG2	1:D:2271:GLN:HG2	2.03	0.40
1:E:605:TRP:CE3	1:E:624:ILE:HG13	2.55	0.40
1:E:1023:ILE:HG22	1:E:1025:PRO:HD3	2.03	0.40
1:E:1566:ARG:CZ	1:E:1595:LYS:HB2	2.51	0.40
1:E:1603:THR:OG1	1:E:1604:PHE:N	2.55	0.40
1:A:368:LEU:HD23	1:A:368:LEU:HA	1.96	0.40
1:A:1316:LEU:HD22	1:A:1330:ASP:HA	2.04	0.40
1:A:2028:ALA:HB3	1:B:2005:ALA:HB2	2.04	0.40
1:A:2269:GLU:HG2	1:A:2271:GLN:HG2	2.03	0.40
1:B:65:ARG:HH12	1:B:91:GLY:HA3	1.85	0.40
1:B:193:PHE:CZ	1:B:195:PRO:HD2	2.57	0.40
1:B:742:ASN:ND2	1:B:744:GLN:HB3	2.37	0.40
1:B:919:PRO:HD3	1:B:1726:ARG:HH21	1.86	0.40
1:B:1122:GLU:HG3	1:B:1165:ASN:HD22	1.86	0.40

*Continued on next page...*

Continued from previous page...

Atom-1	Atom-2	Interatomic distance (Å)	Clash overlap (Å)
1:B:1265:ASN:HD22	1:B:1343:TYR:HE1	1.69	0.40
1:B:1316:LEU:HD22	1:B:1330:ASP:HA	2.04	0.40
1:B:1577:LEU:O	1:B:1592:ARG:HB2	2.22	0.40
1:B:2100:GLN:HE21	1:C:1933:LEU:HD11	1.87	0.40
1:C:1023:ILE:HG22	1:C:1025:PRO:HD3	2.03	0.40
1:D:130:HIS:CD2	1:D:132:SER:H	2.39	0.40
1:D:193:PHE:HD2	1:D:199:ILE:HD11	1.86	0.40
1:D:393:THR:HA	1:D:394:SER:HA	1.95	0.40
1:D:738:ASN:HA	1:D:741:SER:HB2	2.04	0.40
1:D:2269:GLU:OE2	1:D:2271:GLN:NE2	2.51	0.40
1:A:1003:PHE:HB2	1:A:1008:PHE:HE1	1.87	0.40
1:A:1603:THR:OG1	1:A:1604:PHE:N	2.55	0.40
1:A:2124:LEU:HD22	1:B:2175:LEU:HD13	2.04	0.40
1:A:2203:ARG:HA	1:E:2294:ASP:OD2	2.22	0.40
1:B:1194:HIS:CG	1:C:1681:GLN:HE22	2.40	0.40
1:C:592:PRO:HB2	1:C:593:SER:H	1.75	0.40
1:C:2032:ALA:HB1	1:D:2002:HIS:CE1	2.56	0.40
1:D:193:PHE:CZ	1:D:195:PRO:HD2	2.57	0.40
1:E:193:PHE:HD2	1:E:199:ILE:HD11	1.86	0.40

There are no symmetry-related clashes.

## 5.3 Torsion angles [i](#)

### 5.3.1 Protein backbone [i](#)

In the following table, the Percentiles column shows the percent Ramachandran outliers of the chain as a percentile score with respect to all PDB entries followed by that with respect to all EM entries.

The Analysed column shows the number of residues for which the backbone conformation was analysed, and the total number of residues.

Mol	Chain	Analysed	Favoured	Allowed	Outliers	Percentiles
1	A	2359/2381 (99%)	2220 (94%)	136 (6%)	3 (0%)	51 84
1	B	2359/2381 (99%)	2220 (94%)	137 (6%)	2 (0%)	51 84
1	C	2359/2381 (99%)	2220 (94%)	136 (6%)	3 (0%)	51 84
1	D	2359/2381 (99%)	2221 (94%)	136 (6%)	2 (0%)	51 84
1	E	2359/2381 (99%)	2220 (94%)	136 (6%)	3 (0%)	51 84

Continued on next page...

Continued from previous page...

Mol	Chain	Analysed	Favoured	Allowed	Outliers	Percentiles	
All	All	11795/11905 (99%)	11101 (94%)	681 (6%)	13 (0%)	54	84

All (13) Ramachandran outliers are listed below:

Mol	Chain	Res	Type
1	A	593	SER
1	C	593	SER
1	E	593	SER
1	A	592	PRO
1	B	592	PRO
1	C	592	PRO
1	D	592	PRO
1	E	592	PRO
1	A	1621	VAL
1	B	1621	VAL
1	C	1621	VAL
1	D	1621	VAL
1	E	1621	VAL

### 5.3.2 Protein sidechains [i](#)

In the following table, the Percentiles column shows the percent sidechain outliers of the chain as a percentile score with respect to all PDB entries followed by that with respect to all EM entries.

The Analysed column shows the number of residues for which the sidechain conformation was analysed, and the total number of residues.

Mol	Chain	Analysed	Rotameric	Outliers	Percentiles	
1	A	2060/2079 (99%)	2059 (100%)	1 (0%)	100	100
1	B	2060/2079 (99%)	2059 (100%)	1 (0%)	100	100
1	C	2060/2079 (99%)	2059 (100%)	1 (0%)	100	100
1	D	2060/2079 (99%)	2059 (100%)	1 (0%)	100	100
1	E	2060/2079 (99%)	2059 (100%)	1 (0%)	100	100
All	All	10300/10395 (99%)	10295 (100%)	5 (0%)	100	100

All (5) residues with a non-rotameric sidechain are listed below:

Mol	Chain	Res	Type
1	A	65	ARG

Continued on next page...

*Continued from previous page...*

Mol	Chain	Res	Type
1	B	65	ARG
1	C	65	ARG
1	D	65	ARG
1	E	65	ARG

Sometimes sidechains can be flipped to improve hydrogen bonding and reduce clashes. All (118) such sidechains are listed below:

Mol	Chain	Res	Type
1	A	75	GLN
1	A	130	HIS
1	A	215	GLN
1	A	221	GLN
1	A	392	ASN
1	A	439	HIS
1	A	456	ASN
1	A	730	ASN
1	A	962	ASN
1	A	1052	GLN
1	A	1165	ASN
1	A	1268	ASN
1	A	1390	GLN
1	A	1525	HIS
1	A	1528	ASN
1	A	1576	ASN
1	A	1681	GLN
1	A	1759	HIS
1	A	1763	ASN
1	A	2002	HIS
1	A	2100	GLN
1	A	2326	GLN
1	A	2361	GLN
1	B	75	GLN
1	B	130	HIS
1	B	215	GLN
1	B	221	GLN
1	B	392	ASN
1	B	397	ASN
1	B	439	HIS
1	B	456	ASN
1	B	684	ASN
1	B	730	ASN
1	B	758	ASN

*Continued on next page...*

*Continued from previous page...*

<b>Mol</b>	<b>Chain</b>	<b>Res</b>	<b>Type</b>
1	B	962	ASN
1	B	1052	GLN
1	B	1165	ASN
1	B	1268	ASN
1	B	1390	GLN
1	B	1525	HIS
1	B	1528	ASN
1	B	1576	ASN
1	B	1681	GLN
1	B	1759	HIS
1	B	1763	ASN
1	B	2326	GLN
1	B	2361	GLN
1	C	75	GLN
1	C	130	HIS
1	C	215	GLN
1	C	221	GLN
1	C	392	ASN
1	C	397	ASN
1	C	439	HIS
1	C	730	ASN
1	C	758	ASN
1	C	962	ASN
1	C	1052	GLN
1	C	1165	ASN
1	C	1268	ASN
1	C	1390	GLN
1	C	1525	HIS
1	C	1528	ASN
1	C	1576	ASN
1	C	1681	GLN
1	C	1759	HIS
1	C	1763	ASN
1	C	2326	GLN
1	C	2361	GLN
1	D	75	GLN
1	D	130	HIS
1	D	215	GLN
1	D	221	GLN
1	D	392	ASN
1	D	397	ASN
1	D	439	HIS

*Continued on next page...*

*Continued from previous page...*

<b>Mol</b>	<b>Chain</b>	<b>Res</b>	<b>Type</b>
1	D	456	ASN
1	D	684	ASN
1	D	730	ASN
1	D	758	ASN
1	D	962	ASN
1	D	1052	GLN
1	D	1108	GLN
1	D	1165	ASN
1	D	1268	ASN
1	D	1390	GLN
1	D	1525	HIS
1	D	1528	ASN
1	D	1576	ASN
1	D	1681	GLN
1	D	1759	HIS
1	D	1763	ASN
1	D	2326	GLN
1	D	2361	GLN
1	E	75	GLN
1	E	130	HIS
1	E	215	GLN
1	E	221	GLN
1	E	392	ASN
1	E	397	ASN
1	E	439	HIS
1	E	456	ASN
1	E	684	ASN
1	E	730	ASN
1	E	962	ASN
1	E	1052	GLN
1	E	1165	ASN
1	E	1268	ASN
1	E	1390	GLN
1	E	1525	HIS
1	E	1528	ASN
1	E	1576	ASN
1	E	1681	GLN
1	E	1759	HIS
1	E	1763	ASN
1	E	2100	GLN
1	E	2326	GLN
1	E	2361	GLN

### 5.3.3 RNA [i](#)

There are no RNA molecules in this entry.

### 5.4 Non-standard residues in protein, DNA, RNA chains [i](#)

There are no non-standard protein/DNA/RNA residues in this entry.

### 5.5 Carbohydrates [i](#)

There are no monosaccharides in this entry.

### 5.6 Ligand geometry [i](#)

There are no ligands in this entry.

### 5.7 Other polymers [i](#)

There are no such residues in this entry.

### 5.8 Polymer linkage issues [i](#)

There are no chain breaks in this entry.



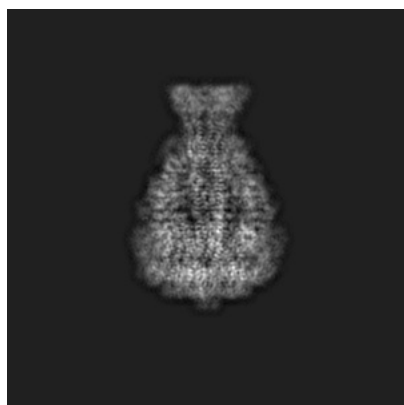
## 6 Map visualisation [i](#)

This section contains visualisations of the EMDB entry EMD-10036. These allow visual inspection of the internal detail of the map and identification of artifacts.

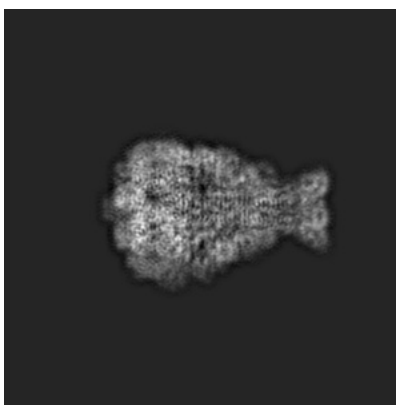
No raw map or half-maps were deposited for this entry and therefore no images, graphs, etc. pertaining to the raw map can be shown.

### 6.1 Orthogonal projections [i](#)

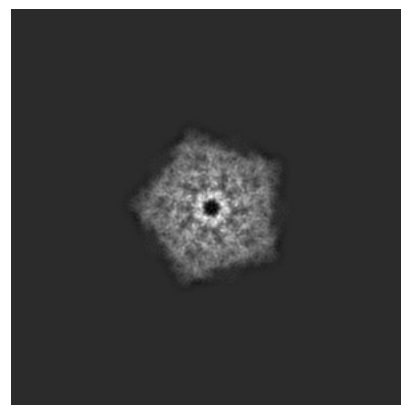
#### 6.1.1 Primary map



X



Y

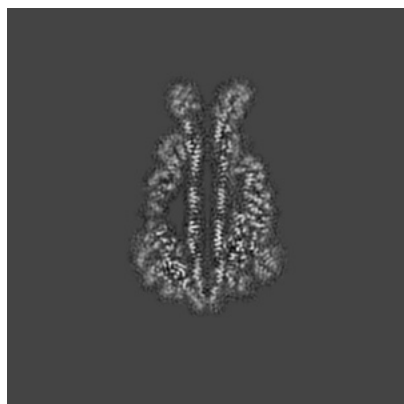


Z

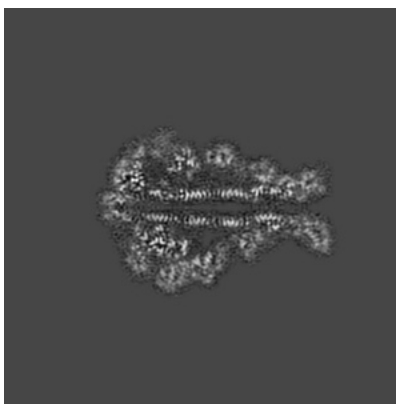
The images above show the map projected in three orthogonal directions.

### 6.2 Central slices [i](#)

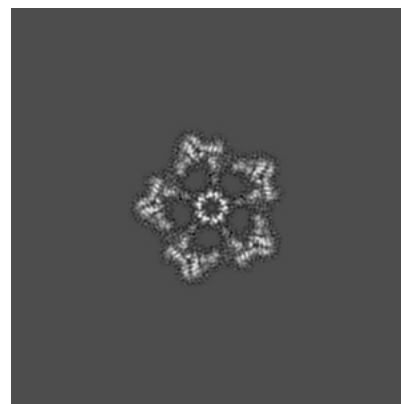
#### 6.2.1 Primary map



X Index: 200



Y Index: 200

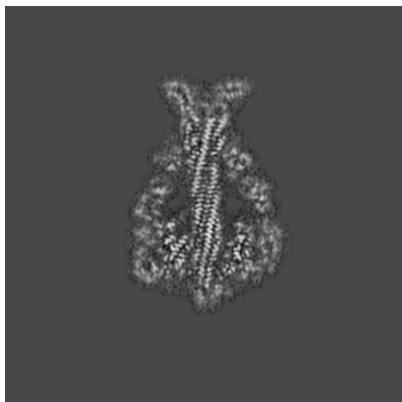


Z Index: 200

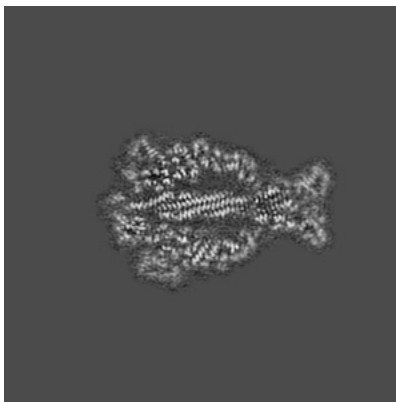
The images above show central slices of the map in three orthogonal directions.

## 6.3 Largest variance slices [\(i\)](#)

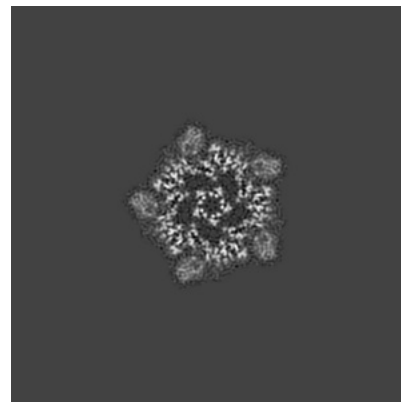
### 6.3.1 Primary map



X Index: 189



Y Index: 213

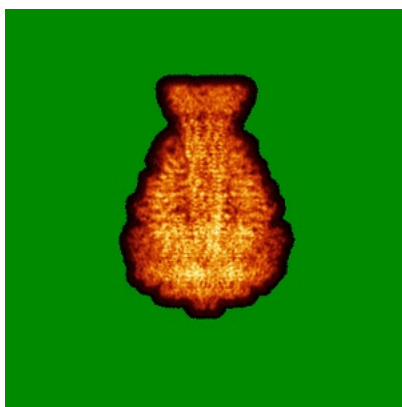


Z Index: 176

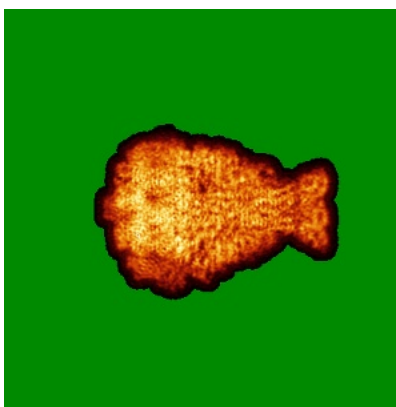
The images above show the largest variance slices of the map in three orthogonal directions.

## 6.4 Orthogonal standard-deviation projections (False-color) [\(i\)](#)

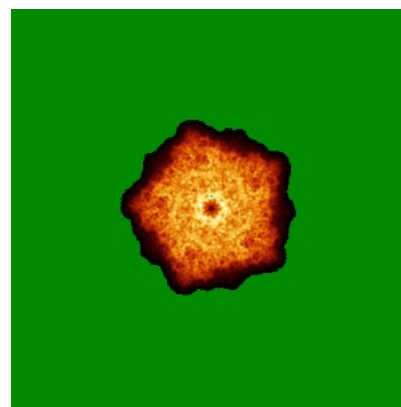
### 6.4.1 Primary map



X



Y

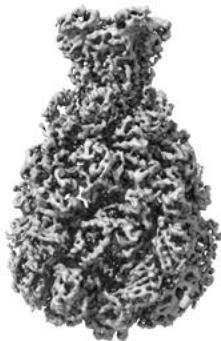


Z

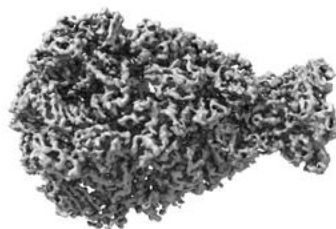
The images above show the map standard deviation projections with false color in three orthogonal directions. Minimum values are shown in green, max in blue, and dark to light orange shades represent small to large values respectively.

## 6.5 Orthogonal surface views [i](#)

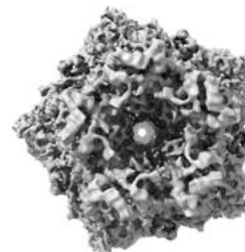
### 6.5.1 Primary map



X



Y



Z

The images above show the 3D surface view of the map at the recommended contour level 0.028. These images, in conjunction with the slice images, may facilitate assessment of whether an appropriate contour level has been provided.

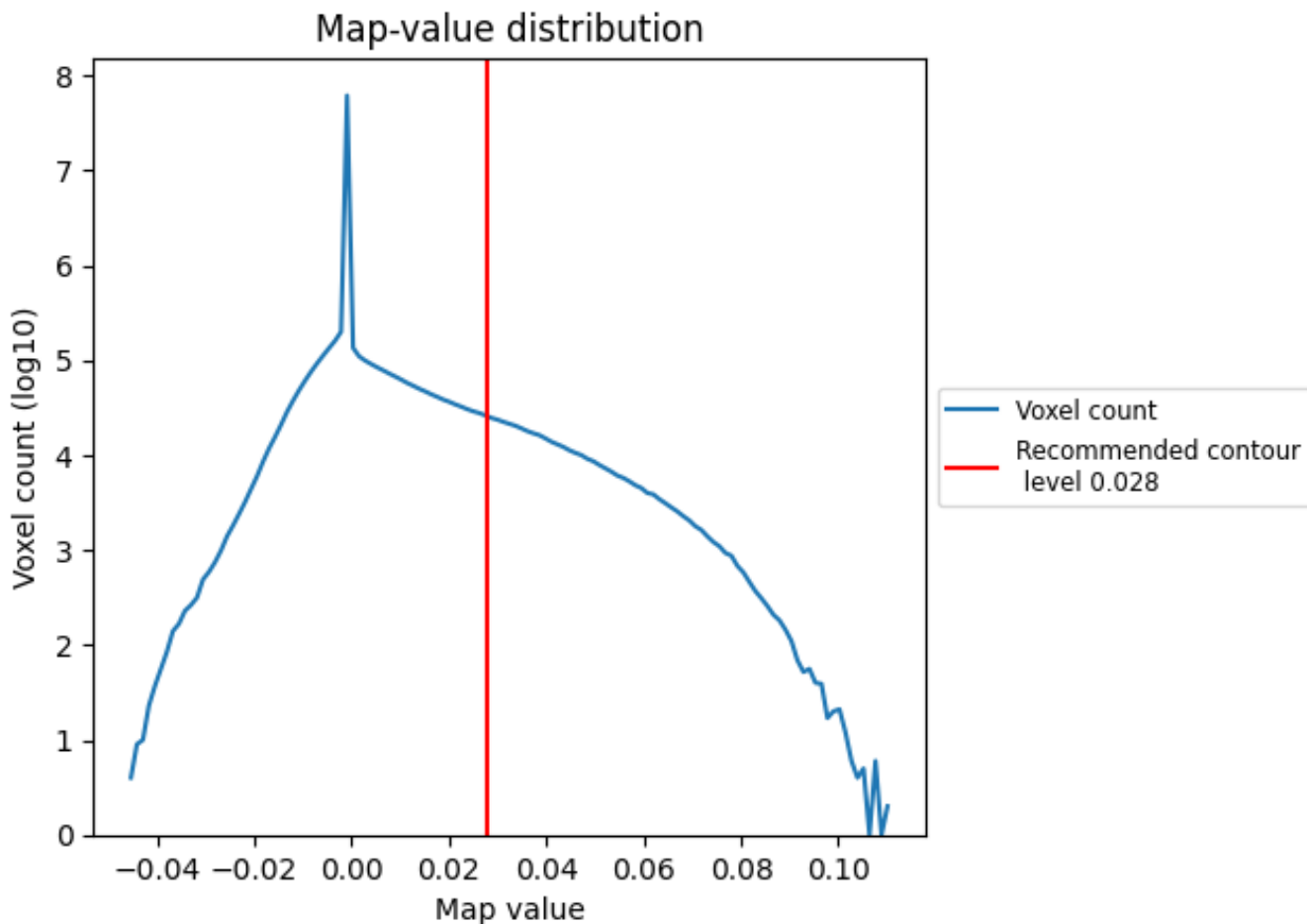
## 6.6 Mask visualisation [i](#)

This section was not generated. No masks/segmentation were deposited.

## 7 Map analysis [i](#)

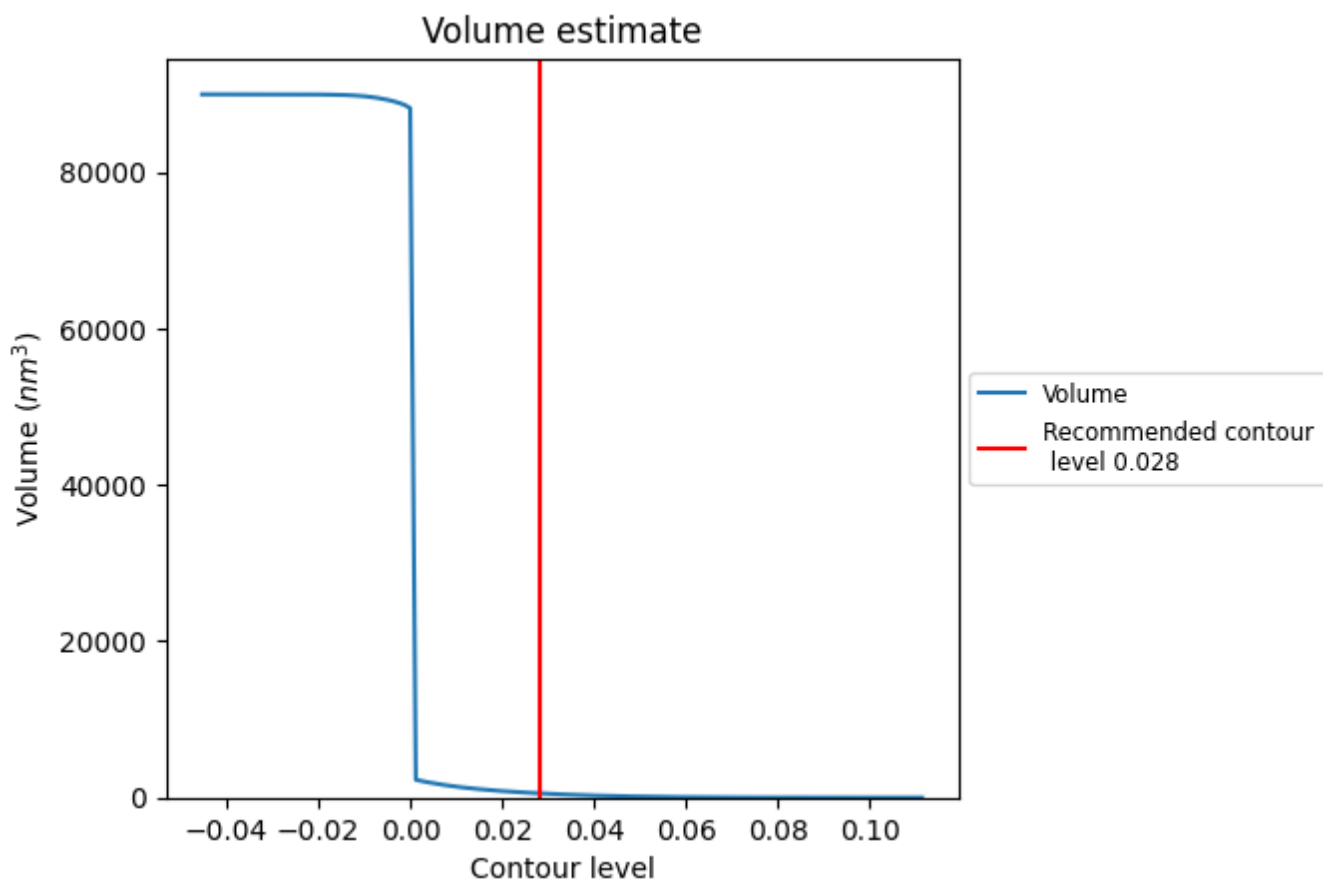
This section contains the results of statistical analysis of the map.

### 7.1 Map-value distribution [i](#)



The map-value distribution is plotted in 128 intervals along the x-axis. The y-axis is logarithmic. A spike in this graph at zero usually indicates that the volume has been masked.

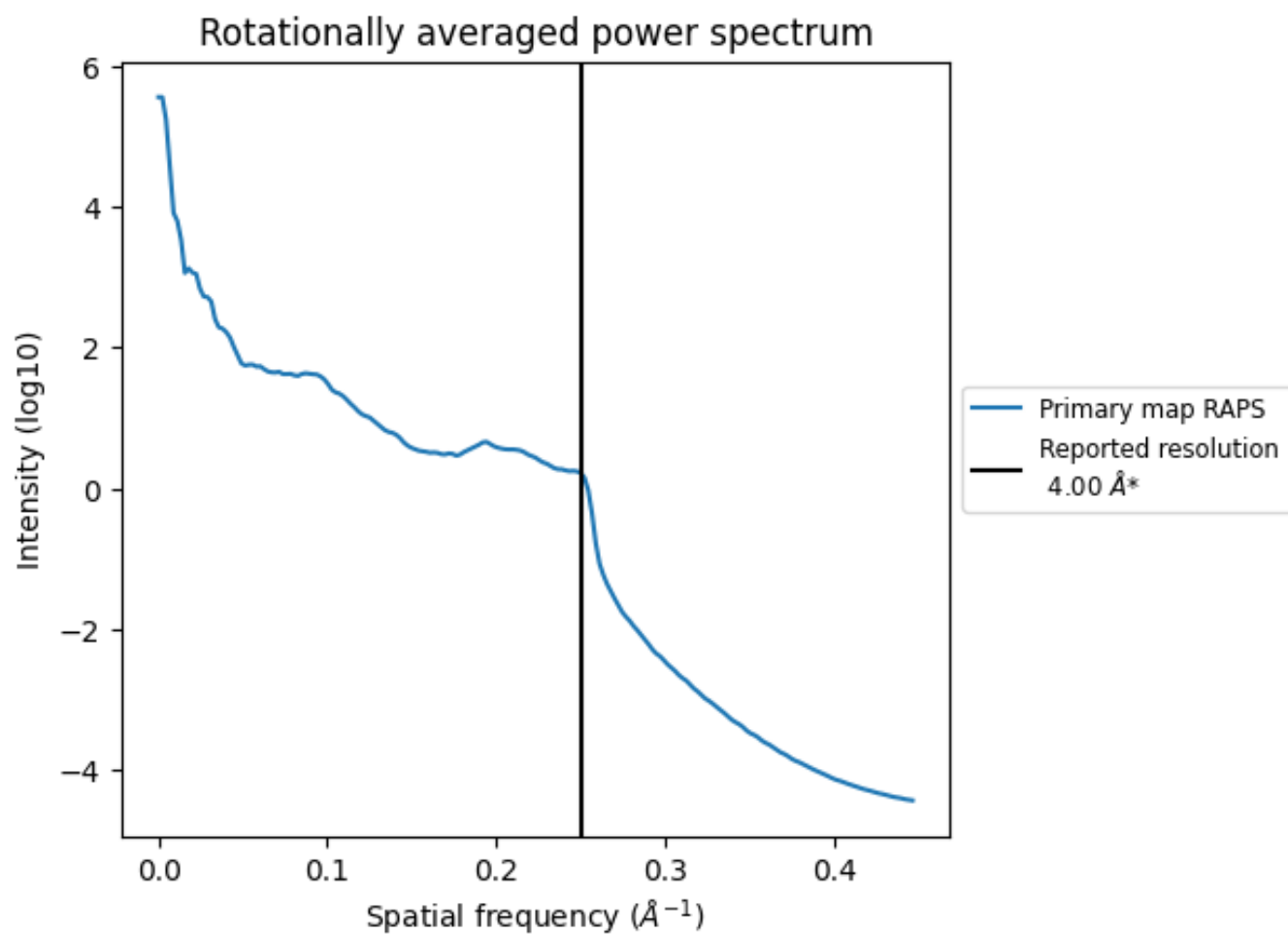
## 7.2 Volume estimate [i](#)



The volume at the recommended contour level is 541 nm<sup>3</sup>; this corresponds to an approximate mass of 489 kDa.

The volume estimate graph shows how the enclosed volume varies with the contour level. The recommended contour level is shown as a vertical line and the intersection between the line and the curve gives the volume of the enclosed surface at the given level.

### 7.3 Rotationally averaged power spectrum [i](#)



\*Reported resolution corresponds to spatial frequency of  $0.250 \text{\AA}^{-1}$

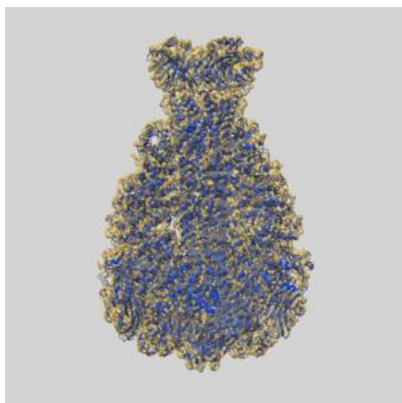
## 8 Fourier-Shell correlation

This section was not generated. No FSC curve or half-maps provided.

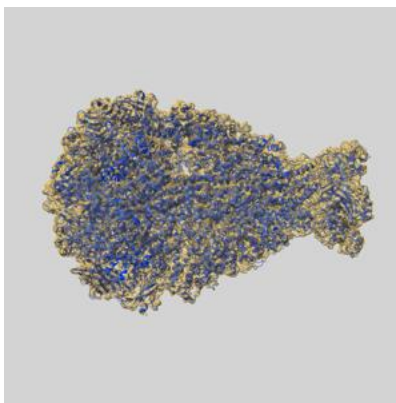
## 9 Map-model fit [i](#)

This section contains information regarding the fit between EMDB map EMD-10036 and PDB model 6RWA. Per-residue inclusion information can be found in section [3](#) on page [4](#).

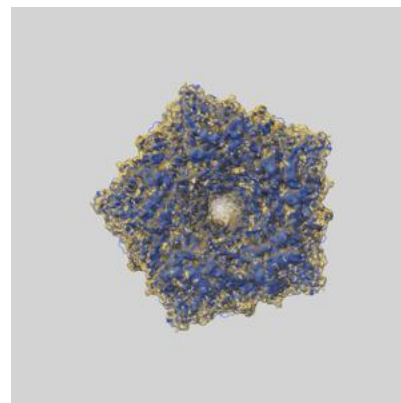
### 9.1 Map-model overlay [i](#)



X



Y

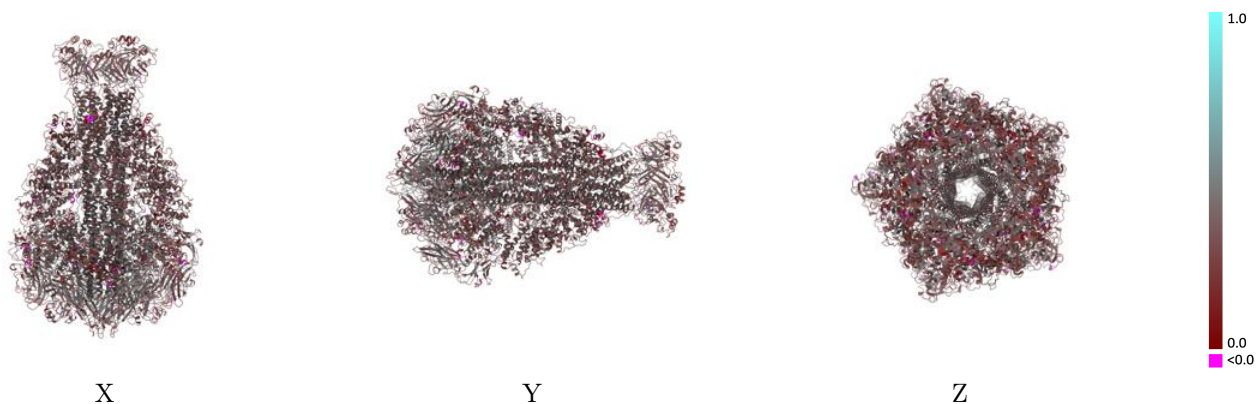


Z

The images above show the 3D surface view of the map at the recommended contour level 0.028 at 50% transparency in yellow overlaid with a ribbon representation of the model coloured in blue. These images allow for the visual assessment of the quality of fit between the atomic model and the map.

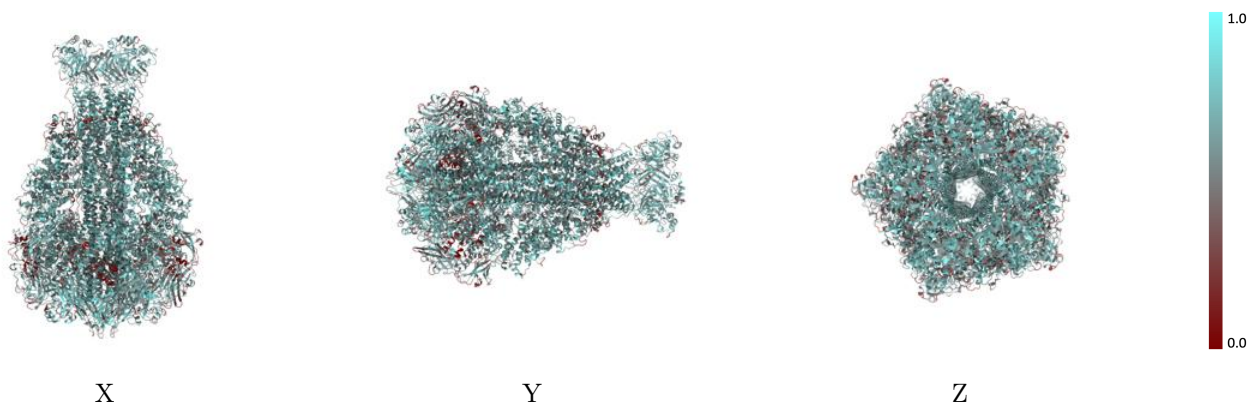


## 9.2 Q-score mapped to coordinate model [i](#)



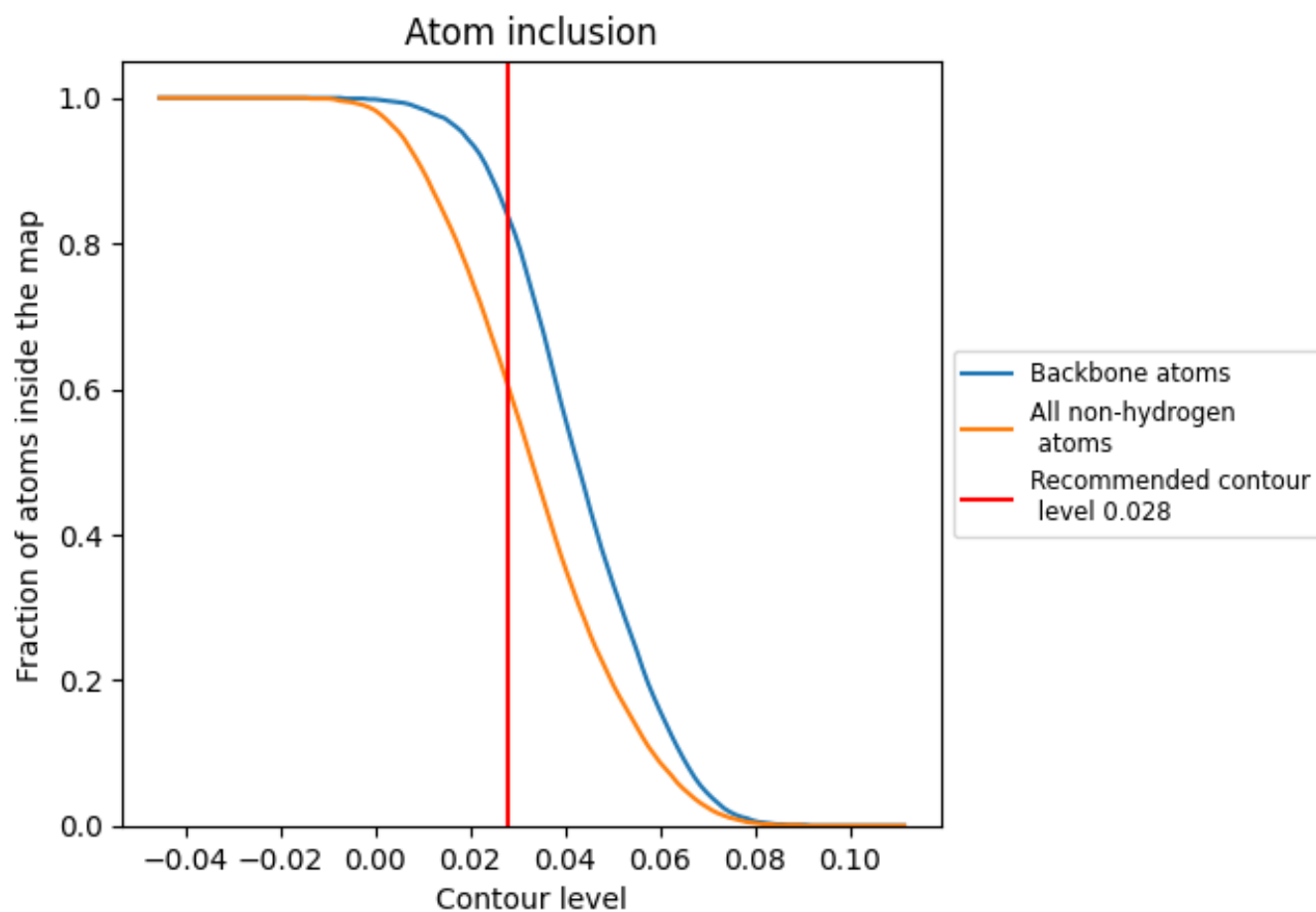
The images above show the model with each residue coloured according to its Q-score. This shows their resolvability in the map with higher Q-score values reflecting better resolvability. Please note: Q-score is calculating the resolvability of atoms, and thus high values are only expected at resolutions at which atoms can be resolved. Low Q-score values may therefore be expected for many entries.

## 9.3 Atom inclusion mapped to coordinate model [i](#)



The images above show the model with each residue coloured according to its atom inclusion. This shows to what extent they are inside the map at the recommended contour level (0.028).













## 9.4 Atom inclusion [i](#)



At the recommended contour level, 84% of all backbone atoms, 60% of all non-hydrogen atoms, are inside the map.

## 9.5 Map-model fit summary [i](#)

The table lists the average atom inclusion at the recommended contour level (0.028) and Q-score for the entire model and for each chain.

Chain	Atom inclusion	Q-score
All	 0.6030	 0.3520
A	 0.6040	 0.3520
B	 0.6040	 0.3520
C	 0.6020	 0.3520
D	 0.6030	 0.3530
E	 0.6040	 0.3530

