



Full wwPDB X-ray Structure Validation Report ⓘ

Mar 8, 2026 – 06:01 PM UTC

PDB ID : 6PS6 / pdb_00006ps6
Title : XFEL beta2 AR structure by ligand exchange from Timolol to Timolol.
Authors : Ishchenko, A.; Stauch, B.; Han, G.W.; Batyuk, A.; Shiriaeva, A.; Li, C.; Zatsepin, N.A.; Weierstall, U.; Liu, W.; Nango, E.; Nakane, T.; Tanaka, R.; Tono, K.; Joti, Y.; Iwata, S.; Moraes, I.; Gati, C.; Cherezov, C.
Deposited on : 2019-07-12
Resolution : 2.70 Å(reported)

This is a Full wwPDB X-ray Structure Validation Report for a publicly released PDB entry.

We welcome your comments at validation@mail.wwpdb.org

A user guide is available at

<https://www.wwpdb.org/validation/2017/XrayValidationReportHelp>

with specific help available everywhere you see the ⓘ symbol.

The types of validation reports are described at

<http://www.wwpdb.org/validation/2017/FAQs#types>.

The following versions of software and data (see [references ⓘ](#)) were used in the production of this report:

MolProbity : 4-5-2 with Phenix2.0
Mogul : 2022.3.0, CSD as543be (2022)
Xtriage (Phenix) : 2.0
EDS : 3.0
Buster-report : wwPDB partial adaption of 1.1.7 (2018)
Percentile statistics : 20250101.v01 (using entries in the PDB archive January 1st 2025)
CCP4 : 9.0.010 (Gargrove)
Density-Fitness : 1.0.12
Ideal geometry (proteins) : Engh & Huber (2001)
Ideal geometry (DNA, RNA) : Parkinson et al. (1996)
Validation Pipeline (wwPDB-VP) : 2.49

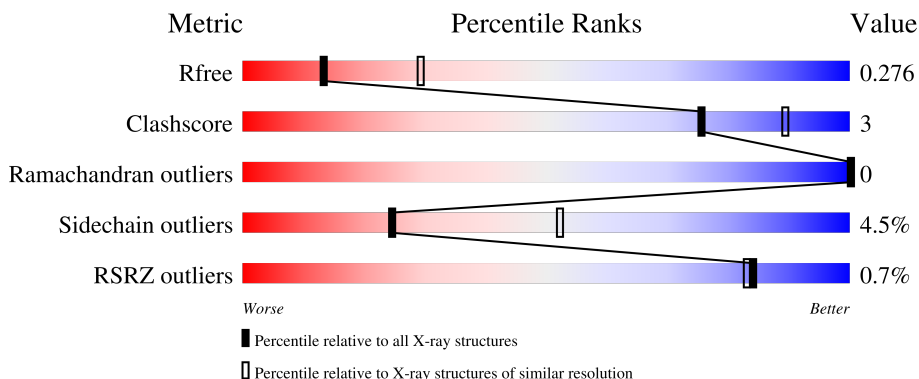
1 Overall quality at a glance

The following experimental techniques were used to determine the structure:

X-RAY DIFFRACTION

The reported resolution of this entry is 2.70 Å.

Percentile scores (ranging between 0-100) for global validation metrics of the entry are shown in the following graphic. The table shows the number of entries on which the scores are based.



Metric	Whole archive (#Entries)	Similar resolution (#Entries, resolution range(Å))
R_{free}	180053	3538 (2.70-2.70)
Clashscore	190562	3843 (2.70-2.70)
Ramachandran outliers	187476	3778 (2.70-2.70)
Sidechain outliers	187428	3778 (2.70-2.70)
RSRZ outliers	180081	3538 (2.70-2.70)

The table below summarises the geometric issues observed across the polymeric chains and their fit to the electron density. The red, orange, yellow and green segments of the lower bar indicate the fraction of residues that contain outliers for ≥ 3 , 2, 1 and 0 types of geometric quality criteria respectively. A grey segment represents the fraction of residues that are not modelled. The numeric value for each fraction is indicated below the corresponding segment, with a dot representing fractions $\leq 5\%$. The upper red bar (where present) indicates the fraction of residues that have poor fit to the electron density. The numeric value is given above the bar.

Mol	Chain	Length	Quality of chain
1	A	506	

2 Entry composition [i](#)

There are 7 unique types of molecules in this entry. The entry contains 3723 atoms, of which 0 are hydrogens and 0 are deuteriums.

In the tables below, the ZeroOcc column contains the number of atoms modelled with zero occupancy, the AltConf column contains the number of residues with at least one atom in alternate conformation and the Trace column contains the number of residues modelled with at most 2 atoms.

- Molecule 1 is a protein called Fusion protein of Beta-2 adrenergic receptor and T4 Lysozyme.

Mol	Chain	Residues	Atoms					ZeroOcc	AltConf	Trace
			Total	C	N	O	S			
1	A	443	3487	2289	576	598	24	0	2	0

There are 36 discrepancies between the modelled and reference sequences:

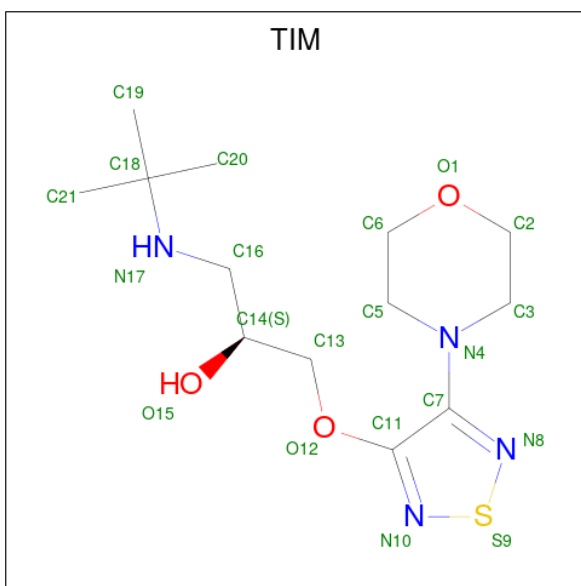
Chain	Residue	Modelled	Actual	Comment	Reference
A	-23	MET	-	initiating methionine	UNP P07550
A	-22	LYS	-	expression tag	UNP P07550
A	-21	THR	-	expression tag	UNP P07550
A	-20	ILE	-	expression tag	UNP P07550
A	-19	ILE	-	expression tag	UNP P07550
A	-18	ALA	-	expression tag	UNP P07550
A	-17	LEU	-	expression tag	UNP P07550
A	-16	SER	-	expression tag	UNP P07550
A	-15	TYR	-	expression tag	UNP P07550
A	-14	ILE	-	expression tag	UNP P07550
A	-13	PHE	-	expression tag	UNP P07550
A	-12	CYS	-	expression tag	UNP P07550
A	-11	LEU	-	expression tag	UNP P07550
A	-10	VAL	-	expression tag	UNP P07550
A	-9	PHE	-	expression tag	UNP P07550
A	-8	ALA	-	expression tag	UNP P07550
A	-7	ASP	-	expression tag	UNP P07550
A	-6	TYR	-	expression tag	UNP P07550
A	-5	LYS	-	expression tag	UNP P07550
A	-4	ASP	-	expression tag	UNP P07550
A	-3	ASP	-	expression tag	UNP P07550
A	-2	ASP	-	expression tag	UNP P07550
A	-1	ASP	-	expression tag	UNP P07550
A	0	ALA	-	expression tag	UNP P07550
A	16	ARG	GLY	variant	UNP P07550
A	27	GLN	GLU	variant	UNP P07550
A	122	TRP	GLU	engineered mutation	UNP P07550

Continued on next page...

Continued from previous page...

Chain	Residue	Modelled	Actual	Comment	Reference
A	187	GLU	ASN	engineered mutation	UNP P07550
A	1054	THR	CYS	engineered mutation	UNP D9IEF7
A	1097	ALA	CYS	engineered mutation	UNP D9IEF7
A	349	HIS	-	expression tag	UNP P07550
A	350	HIS	-	expression tag	UNP P07550
A	351	HIS	-	expression tag	UNP P07550
A	352	HIS	-	expression tag	UNP P07550
A	353	HIS	-	expression tag	UNP P07550
A	354	HIS	-	expression tag	UNP P07550

- Molecule 2 is (2S)-1-(tert-butylamino)-3-[(4-morpholin-4-yl-1,2,5-thiadiazol-3-yl)oxy]propan-2-ol (CCD ID: TIM) (formula: C₁₃H₂₄N₄O₃S) (labeled as "Ligand of Interest" by depositor).



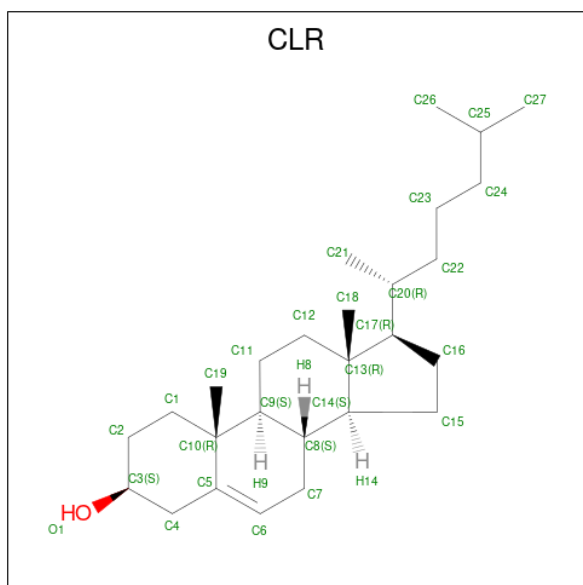
Mol	Chain	Residues	Atoms					ZeroOcc	AltConf
			Total	C	N	O	S		
2	A	1	21	13	4	3	1	0	0

- Molecule 3 is SULFATE ION (CCD ID: SO4) (formula: O₄S).



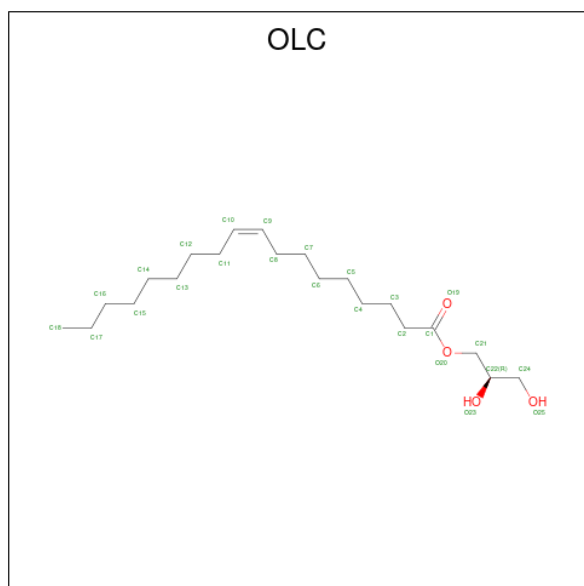
Mol	Chain	Residues	Atoms	ZeroOcc	AltConf
3	A	1	Total O S 5 4 1	0	0
3	A	1	Total O S 5 4 1	0	0
3	A	1	Total O S 5 4 1	0	0
3	A	1	Total O S 5 4 1	0	0

- Molecule 4 is CHOLESTEROL (CCD ID: CLR) (formula: $C_{27}H_{46}O$).



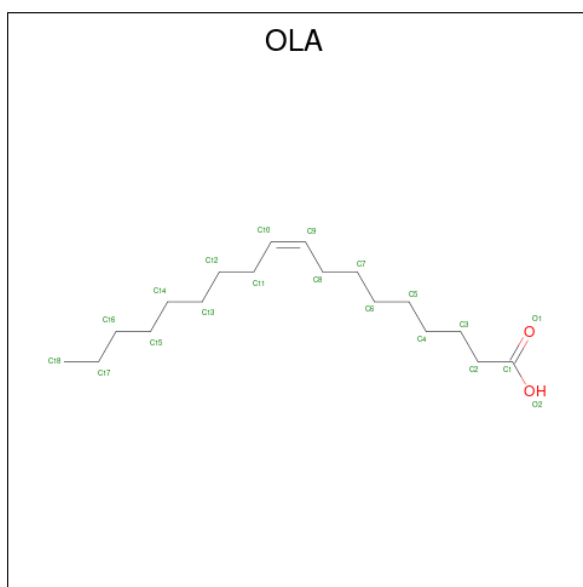
Mol	Chain	Residues	Atoms		ZeroOcc	AltConf
4	A	1	Total	C O	0	0
			28	27 1		

- Molecule 5 is (2R)-2,3-dihydroxypropyl (9Z)-octadec-9-enoate (CCD ID: OLC) (formula: $C_{21}H_{40}O_4$).



Mol	Chain	Residues	Atoms		ZeroOcc	AltConf
5	A	1	Total	C	0	0
			10	10		
5	A	1	Total	C O	0	0
			15	11 4		
5	A	1	Total	C O	0	0
			16	12 4		
5	A	1	Total	C O	0	0
			21	17 4		
5	A	1	Total	C O	0	0
			18	14 4		
5	A	1	Total	C O	0	0
			13	9 4		
5	A	1	Total	C O	0	0
			13	9 4		

- Molecule 6 is OLEIC ACID (CCD ID: OLA) (formula: $C_{18}H_{34}O_2$).



Mol	Chain	Residues	Atoms		ZeroOcc	AltConf
6	A	1	Total	C O	0	0
			14	12 2		
6	A	1	Total	C O	0	0
			10	8 2		
6	A	1	Total	C O	0	0
			14	12 2		
6	A	1	Total	C O	0	0
			13	11 2		

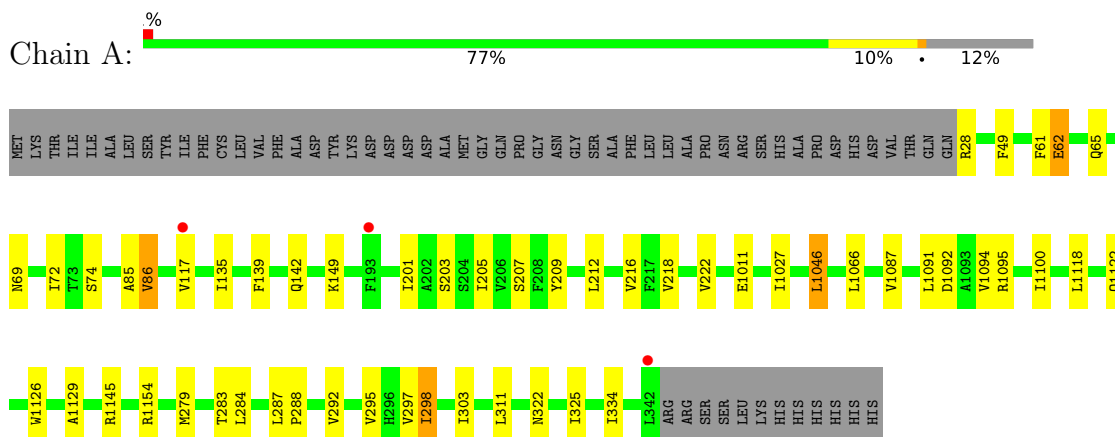
- Molecule 7 is water.

Mol	Chain	Residues	Atoms		ZeroOcc	AltConf
7	A	10	Total	O	0	0
			10	10		

3 Residue-property plots [i](#)

These plots are drawn for all protein, RNA, DNA and oligosaccharide chains in the entry. The first graphic for a chain summarises the proportions of the various outlier classes displayed in the second graphic. The second graphic shows the sequence view annotated by issues in geometry and electron density. Residues are color-coded according to the number of geometric quality criteria for which they contain at least one outlier: green = 0, yellow = 1, orange = 2 and red = 3 or more. A red dot above a residue indicates a poor fit to the electron density ($RSRZ > 2$). Stretches of 2 or more consecutive residues without any outlier are shown as a green connector. Residues present in the sample, but not in the model, are shown in grey.

- Molecule 1: Fusion protein of Beta-2 adrenergic receptor and T4 Lysozyme



4 Data and refinement statistics

Property	Value	Source
Space group	P 21 21 21	Depositor
Cell constants a, b, c, α , β , γ	41.48Å 76.19Å 171.96Å 90.00° 90.00° 90.00°	Depositor
Resolution (Å)	31.35 – 2.70 31.35 – 2.70	Depositor EDS
% Data completeness (in resolution range)	99.8 (31.35-2.70) 99.8 (31.35-2.70)	Depositor EDS
R_{merge}	(Not available)	Depositor
R_{sym}	(Not available)	Depositor
$\langle I/\sigma(I) \rangle$ ¹	1.06 (at 2.68Å)	Xtrriage
Refinement program	BUSTER 2.10.2	Depositor
R, R_{free}	0.218 , 0.232 0.246 , 0.276	Depositor DCC
R_{free} test set	785 reflections (5.01%)	wwPDB-VP
Wilson B-factor (Å ²)	68.2	Xtrriage
Anisotropy	0.342	Xtrriage
Bulk solvent k_{sol} (e/Å ³), B_{sol} (Å ²)	0.29 , 56.8	EDS
L-test for twinning ²	$\langle L \rangle = 0.47$, $\langle L^2 \rangle = 0.31$	Xtrriage
Estimated twinning fraction	No twinning to report.	Xtrriage
F_o, F_c correlation	0.94	EDS
Total number of atoms	3723	wwPDB-VP
Average B, all atoms (Å ²)	87.0	wwPDB-VP

Xtrriage's analysis on translational NCS is as follows: *The largest off-origin peak in the Patterson function is 4.82% of the height of the origin peak. No significant pseudotranslation is detected.*

¹Intensities estimated from amplitudes.

²Theoretical values of $\langle |L| \rangle$, $\langle L^2 \rangle$ for acentric reflections are 0.5, 0.333 respectively for untwinned datasets, and 0.375, 0.2 for perfectly twinned datasets.

5 Model quality [i](#)

5.1 Standard geometry [i](#)

Bond lengths and bond angles in the following residue types are not validated in this section: TIM, CLR, OLC, OLA, SO4

The Z score for a bond length (or angle) is the number of standard deviations the observed value is removed from the expected value. A bond length (or angle) with $|Z| > 5$ is considered an outlier worth inspection. RMSZ is the root-mean-square of all Z scores of the bond lengths (or angles).

Mol	Chain	Bond lengths		Bond angles	
		RMSZ	# Z >5	RMSZ	# Z >5
1	A	0.78	0/3576	1.37	13/4872 (0.3%)

There are no bond length outliers.

All (13) bond angle outliers are listed below:

Mol	Chain	Res	Type	Atoms	Z	Observed(°)	Ideal(°)
1	A	279	MET	CA-C-N	5.38	125.95	119.98
1	A	279	MET	C-N-CA	5.38	125.95	119.98
1	A	85	ALA	CA-C-N	-5.32	117.70	123.08
1	A	85	ALA	C-N-CA	-5.32	117.70	123.08
1	A	61	PHE	CA-C-N	5.30	127.91	120.28
1	A	61	PHE	C-N-CA	5.30	127.91	120.28
1	A	295	VAL	N-CA-C	-5.29	107.26	111.81
1	A	86	VAL	CA-C-N	5.29	123.57	120.24
1	A	86	VAL	C-N-CA	5.29	123.57	120.24
1	A	1100	ILE	CA-C-N	5.20	127.56	120.54
1	A	1100	ILE	C-N-CA	5.20	127.56	120.54
1	A	1129	ALA	CA-C-N	5.07	127.03	120.44
1	A	1129	ALA	C-N-CA	5.07	127.03	120.44

There are no chirality outliers.

There are no planarity outliers.

5.2 Too-close contacts [i](#)

In the following table, the Non-H and H(model) columns list the number of non-hydrogen atoms and hydrogen atoms in the chain respectively. The H(added) column lists the number of hydrogen atoms added and optimized by MolProbity. The Clashes column lists the number of clashes within the asymmetric unit, whereas Symm-Clashes lists symmetry-related clashes.

Mol	Chain	Non-H	H(model)	H(added)	Clashes	Symm-Clashes
1	A	3487	0	3480	22	0
2	A	21	0	24	1	0
3	A	20	0	0	0	0
4	A	28	0	46	1	0
5	A	106	0	136	1	0
6	A	51	0	64	3	0
7	A	10	0	0	0	0
All	All	3723	0	3750	22	0

The all-atom clashscore is defined as the number of clashes found per 1000 atoms (including hydrogen atoms). The all-atom clashscore for this structure is 3.

All (22) close contacts within the same asymmetric unit are listed below, sorted by their clash magnitude.

Atom-1	Atom-2	Interatomic distance (Å)	Clash overlap (Å)
1:A:201:ILE:HD11	1:A:297:VAL:HG21	1.83	0.60
1:A:216:VAL:HG12	6:A:1217:OLA:H61	1.84	0.59
1:A:283[A]:THR:HG21	6:A:1217:OLA:H9	1.85	0.58
1:A:205:ILE:HA	1:A:209:TYR:HB2	1.88	0.56
1:A:218:VAL:HG22	6:A:1215:OLA:H22	1.87	0.55
1:A:62:GLU:HA	1:A:65:GLN:HG3	1.91	0.53
1:A:1091:LEU:HD22	1:A:1095:ARG:HB3	1.92	0.52
1:A:1087:VAL:HG11	1:A:1118:LEU:HB3	1.92	0.49
1:A:74:SER:HA	4:A:1206:CLR:H72	1.96	0.47
1:A:203:SER:O	1:A:207:SER:HB2	2.15	0.47
1:A:1087:VAL:HG12	1:A:1122:GLN:HG3	1.97	0.46
1:A:288:PRO:HB2	1:A:311:LEU:HD22	1.99	0.45
1:A:297:VAL:HG23	1:A:298:ILE:HD12	1.99	0.45
1:A:1011:GLU:CD	1:A:1145:ARG:HH12	2.26	0.42
1:A:69:ASN:HA	1:A:72:ILE:HB	2.01	0.42
1:A:139:PHE:HB3	1:A:142:GLN:HB2	2.02	0.42
1:A:1126:TRP:HB3	1:A:1154:ARG:HA	2.00	0.42
1:A:1027:ILE:HD13	1:A:1046:LEU:HD11	2.00	0.41
1:A:49:PHE:CD1	5:A:1210:OLC:H13	2.56	0.41
1:A:322:ASN:HA	1:A:325:ILE:HD12	2.02	0.41
1:A:117:VAL:HG21	2:A:1201:TIM:H13	2.03	0.40

There are no symmetry-related clashes.

5.3 Torsion angles [i](#)

5.3.1 Protein backbone [i](#)

In the following table, the Percentiles column shows the percent Ramachandran outliers of the chain as a percentile score with respect to all X-ray entries followed by that with respect to entries of similar resolution.

The Analysed column shows the number of residues for which the backbone conformation was analysed, and the total number of residues.

Mol	Chain	Analysed	Favoured	Allowed	Outliers	Percentiles
1	A	443/506 (88%)	431 (97%)	12 (3%)	0	100 100

There are no Ramachandran outliers to report.

5.3.2 Protein sidechains [i](#)

In the following table, the Percentiles column shows the percent sidechain outliers of the chain as a percentile score with respect to all X-ray entries followed by that with respect to entries of similar resolution.

The Analysed column shows the number of residues for which the sidechain conformation was analysed, and the total number of residues.

Mol	Chain	Analysed	Rotameric	Outliers	Percentiles
1	A	361/438 (82%)	344 (95%)	17 (5%)	23 51

All (17) residues with a non-rotameric sidechain are listed below:

Mol	Chain	Res	Type
1	A	28	ARG
1	A	62	GLU
1	A	86	VAL
1	A	135	ILE
1	A	149	LYS
1	A	212	LEU
1	A	222	VAL
1	A	1046	LEU
1	A	1066	LEU
1	A	1092	ASP
1	A	1094	VAL
1	A	284[A]	LEU
1	A	284[B]	LEU

Continued on next page...

Continued from previous page...

Mol	Chain	Res	Type
1	A	292	VAL
1	A	298	ILE
1	A	303	ILE
1	A	334	ILE

Sometimes sidechains can be flipped to improve hydrogen bonding and reduce clashes. All (7) such sidechains are listed below:

Mol	Chain	Res	Type
1	A	51	ASN
1	A	65	GLN
1	A	69	ASN
1	A	93	HIS
1	A	1132	ASN
1	A	1144	ASN
1	A	318	ASN

5.3.3 RNA [i](#)

There are no RNA molecules in this entry.

5.4 Non-standard residues in protein, DNA, RNA chains [i](#)

There are no non-standard protein/DNA/RNA residues in this entry.

5.5 Carbohydrates [i](#)

There are no oligosaccharides in this entry.

5.6 Ligand geometry [i](#)

17 ligands are modelled in this entry.

In the following table, the Counts columns list the number of bonds (or angles) for which Mogul statistics could be retrieved, the number of bonds (or angles) that are observed in the model and the number of bonds (or angles) that are defined in the Chemical Component Dictionary. The Link column lists molecule types, if any, to which the group is linked. The Z score for a bond length (or angle) is the number of standard deviations the observed value is removed from the expected value. A bond length (or angle) with $|Z| > 2$ is considered an outlier worth inspection. RMSZ is the root-mean-square of all Z scores of the bond lengths (or angles).

Mol	Type	Chain	Res	Link	Bond lengths			Bond angles		
					Counts	RMSZ	# Z > 2	Counts	RMSZ	# Z > 2
4	CLR	A	1206	-	31,31,31	0.63	0	48,48,48	1.27	6 (12%)
3	SO4	A	1202	-	4,4,4	0.31	0	6,6,6	0.15	0
3	SO4	A	1204	-	4,4,4	0.24	0	6,6,6	0.09	0
5	OLC	A	1211	-	17,17,24	0.39	0	18,18,25	0.93	1 (5%)
5	OLC	A	1210	-	20,20,24	0.34	0	21,21,25	0.86	1 (4%)
6	OLA	A	1216	-	13,13,19	0.62	0	13,13,19	0.98	0
5	OLC	A	1209	-	15,15,24	0.35	0	16,16,25	1.00	1 (6%)
5	OLC	A	1212	-	12,12,24	0.39	0	13,13,25	1.10	2 (15%)
6	OLA	A	1215	-	9,9,19	0.71	0	9,9,19	1.03	1 (11%)
6	OLA	A	1214	-	13,13,19	0.61	0	13,13,19	0.99	1 (7%)
6	OLA	A	1217	-	12,12,19	0.66	0	12,12,19	1.12	2 (16%)
5	OLC	A	1207	-	9,9,24	0.35	0	8,8,25	0.59	0
3	SO4	A	1203	-	4,4,4	0.28	0	6,6,6	0.09	0
3	SO4	A	1205	-	4,4,4	0.23	0	6,6,6	0.09	0
2	TIM	A	1201	-	22,22,22	1.26	3 (13%)	26,30,30	1.69	6 (23%)
5	OLC	A	1208	-	14,14,24	0.39	0	15,15,25	1.04	2 (13%)
5	OLC	A	1213	-	12,12,24	0.36	0	13,13,25	1.11	1 (7%)

In the following table, the Chirals column lists the number of chiral outliers, the number of chiral centers analysed, the number of these observed in the model and the number defined in the Chemical Component Dictionary. Similar counts are reported in the Torsion and Rings columns. '-' means no outliers of that kind were identified.

Mol	Type	Chain	Res	Link	Chirals	Torsions	Rings
4	CLR	A	1206	-	-	5/10/68/68	0/4/4/4
5	OLC	A	1211	-	-	10/17/17/24	-
5	OLC	A	1210	-	-	14/20/20/24	-
6	OLA	A	1216	-	-	6/11/11/17	-
5	OLC	A	1209	-	-	6/15/15/24	-
5	OLC	A	1212	-	-	5/12/12/24	-
6	OLA	A	1215	-	-	3/7/7/17	-
6	OLA	A	1214	-	-	7/11/11/17	-
6	OLA	A	1217	-	-	9/10/10/17	-
5	OLC	A	1207	-	-	3/7/7/24	-
2	TIM	A	1201	-	-	6/15/23/23	0/2/2/2
5	OLC	A	1208	-	-	4/14/14/24	-
5	OLC	A	1213	-	-	6/12/12/24	-

All (3) bond length outliers are listed below:

Mol	Chain	Res	Type	Atoms	Z	Observed(Å)	Ideal(Å)
2	A	1201	TIM	S9-N8	3.14	1.67	1.62
2	A	1201	TIM	S9-N10	2.43	1.66	1.62
2	A	1201	TIM	C11-N10	2.24	1.34	1.30

All (24) bond angle outliers are listed below:

Mol	Chain	Res	Type	Atoms	Z	Observed(°)	Ideal(°)
2	A	1201	TIM	C16-N17-C18	3.70	120.34	116.52
4	A	1206	CLR	C4-C5-C10	3.62	121.06	116.42
2	A	1201	TIM	O12-C11-C7	3.30	126.82	121.17
2	A	1201	TIM	O12-C11-N10	-3.15	116.73	123.84
4	A	1206	CLR	C4-C5-C6	-3.11	116.35	120.57
2	A	1201	TIM	C16-C14-C13	2.88	114.94	110.54
5	A	1213	OLC	O20-C1-C2	2.79	120.33	111.83
5	A	1210	OLC	O20-C1-C2	2.73	120.17	111.83
6	A	1217	OLA	O2-C1-C2	2.71	122.56	114.00
5	A	1211	OLC	O20-C1-C2	2.63	119.86	111.83
2	A	1201	TIM	C19-C18-N17	2.61	117.43	109.18
5	A	1212	OLC	O20-C1-C2	2.61	119.79	111.83
5	A	1209	OLC	O20-C1-C2	2.56	119.64	111.83
5	A	1208	OLC	O20-C1-C2	2.53	119.55	111.83
4	A	1206	CLR	C8-C7-C6	-2.25	109.65	112.76
2	A	1201	TIM	C3-N4-C5	2.22	117.22	112.68
5	A	1212	OLC	O20-C1-O19	-2.16	118.22	123.63
6	A	1217	OLA	O2-C1-O1	-2.15	117.79	123.33
4	A	1206	CLR	C2-C1-C10	2.15	117.36	112.78
6	A	1214	OLA	O2-C1-C2	2.14	120.75	114.00
4	A	1206	CLR	C21-C20-C22	-2.14	107.03	110.34
6	A	1215	OLA	O2-C1-O1	-2.07	118.00	123.33
5	A	1208	OLC	O20-C1-O19	-2.04	118.52	123.63
4	A	1206	CLR	C3-C4-C5	-2.02	108.84	112.05

There are no chirality outliers.

All (84) torsion outliers are listed below:

Mol	Chain	Res	Type	Atoms
2	A	1201	TIM	N8-C7-N4-C3
2	A	1201	TIM	C11-C7-N4-C3
2	A	1201	TIM	C7-C11-O12-C13
2	A	1201	TIM	N10-C11-O12-C13
5	A	1210	OLC	O20-C21-C22-C24

Continued on next page...

Continued from previous page...

Mol	Chain	Res	Type	Atoms
5	A	1208	OLC	C2-C1-O20-C21
5	A	1210	OLC	C2-C1-O20-C21
5	A	1211	OLC	C2-C1-O20-C21
5	A	1213	OLC	C2-C1-O20-C21
5	A	1208	OLC	O19-C1-O20-C21
5	A	1212	OLC	O19-C1-O20-C21
5	A	1213	OLC	O19-C1-O20-C21
5	A	1212	OLC	C2-C1-O20-C21
5	A	1210	OLC	O20-C21-C22-O23
5	A	1210	OLC	O19-C1-O20-C21
5	A	1211	OLC	O19-C1-O20-C21
4	A	1206	CLR	C17-C20-C22-C23
5	A	1209	OLC	C2-C1-O20-C21
5	A	1209	OLC	O19-C1-O20-C21
4	A	1206	CLR	C21-C20-C22-C23
2	A	1201	TIM	O12-C13-C14-C16
5	A	1213	OLC	C1-C2-C3-C4
2	A	1201	TIM	O12-C13-C14-O15
5	A	1211	OLC	O20-C21-C22-O23
6	A	1217	OLA	C1-C2-C3-C4
5	A	1211	OLC	O20-C21-C22-C24
6	A	1215	OLA	C1-C2-C3-C4
6	A	1217	OLA	C2-C3-C4-C5
5	A	1209	OLC	C2-C3-C4-C5
6	A	1217	OLA	C4-C5-C6-C7
5	A	1211	OLC	C4-C5-C6-C7
6	A	1216	OLA	C5-C6-C7-C8
6	A	1217	OLA	C5-C6-C7-C8
5	A	1211	OLC	C5-C6-C7-C8
5	A	1210	OLC	C4-C5-C6-C7
5	A	1211	OLC	C2-C3-C4-C5
5	A	1208	OLC	C3-C4-C5-C6
5	A	1211	OLC	C3-C4-C5-C6
6	A	1214	OLA	C4-C5-C6-C7
6	A	1217	OLA	C3-C4-C5-C6
6	A	1214	OLA	C5-C6-C7-C8
5	A	1210	OLC	C10-C11-C12-C13
5	A	1210	OLC	C6-C7-C8-C9
5	A	1210	OLC	C3-C4-C5-C6
5	A	1210	OLC	C1-C2-C3-C4
5	A	1211	OLC	C6-C7-C8-C9
6	A	1216	OLA	C6-C7-C8-C9

Continued on next page...

Continued from previous page...

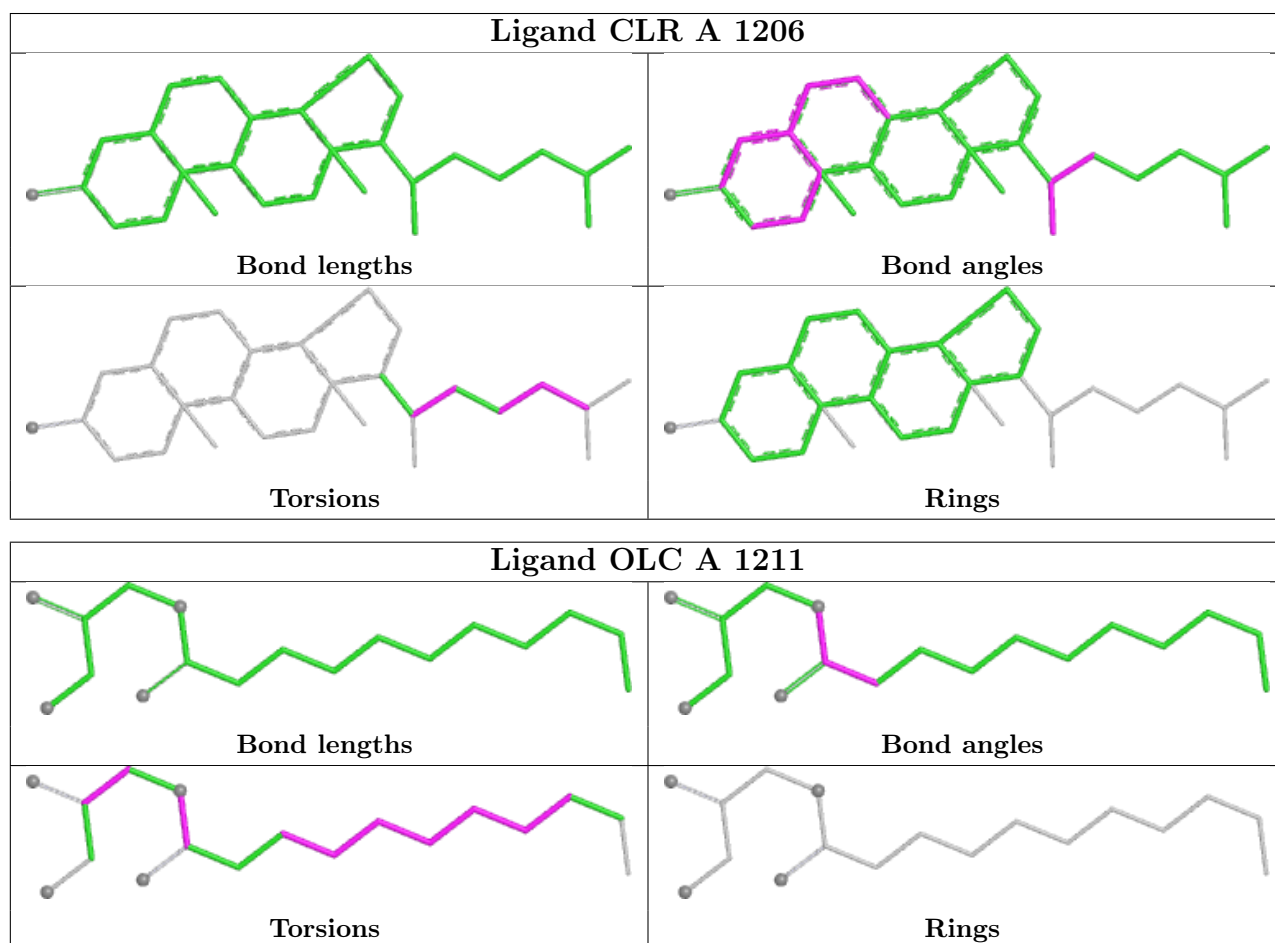
Mol	Chain	Res	Type	Atoms
6	A	1215	OLA	C2-C3-C4-C5
5	A	1210	OLC	C2-C3-C4-C5
6	A	1217	OLA	C6-C7-C8-C9
6	A	1216	OLA	C2-C3-C4-C5
5	A	1207	OLC	C3-C4-C5-C6
6	A	1214	OLA	C6-C7-C8-C9
4	A	1206	CLR	C23-C24-C25-C26
5	A	1212	OLC	C3-C4-C5-C6
5	A	1213	OLC	C3-C4-C5-C6
4	A	1206	CLR	C23-C24-C25-C27
5	A	1210	OLC	C11-C12-C13-C14
5	A	1212	OLC	C1-C2-C3-C4
5	A	1209	OLC	C1-C2-C3-C4
6	A	1214	OLA	C9-C10-C11-C12
6	A	1214	OLA	C1-C2-C3-C4
5	A	1209	OLC	C3-C4-C5-C6
5	A	1207	OLC	C5-C6-C7-C8
6	A	1217	OLA	C7-C8-C9-C10
5	A	1208	OLC	O20-C21-C22-O23
6	A	1216	OLA	C7-C8-C9-C10
4	A	1206	CLR	C22-C23-C24-C25
5	A	1212	OLC	C2-C3-C4-C5
6	A	1214	OLA	O2-C1-C2-C3
5	A	1209	OLC	O20-C21-C22-C24
6	A	1214	OLA	O1-C1-C2-C3
5	A	1207	OLC	C4-C5-C6-C7
5	A	1210	OLC	C9-C10-C11-C12
5	A	1211	OLC	C7-C8-C9-C10
6	A	1216	OLA	O1-C1-C2-C3
6	A	1216	OLA	O2-C1-C2-C3
5	A	1213	OLC	O20-C1-C2-C3
6	A	1215	OLA	C3-C4-C5-C6
5	A	1210	OLC	C21-C22-C24-O25
6	A	1217	OLA	O2-C1-C2-C3
5	A	1213	OLC	O19-C1-C2-C3
5	A	1210	OLC	O20-C1-C2-C3
6	A	1217	OLA	O1-C1-C2-C3

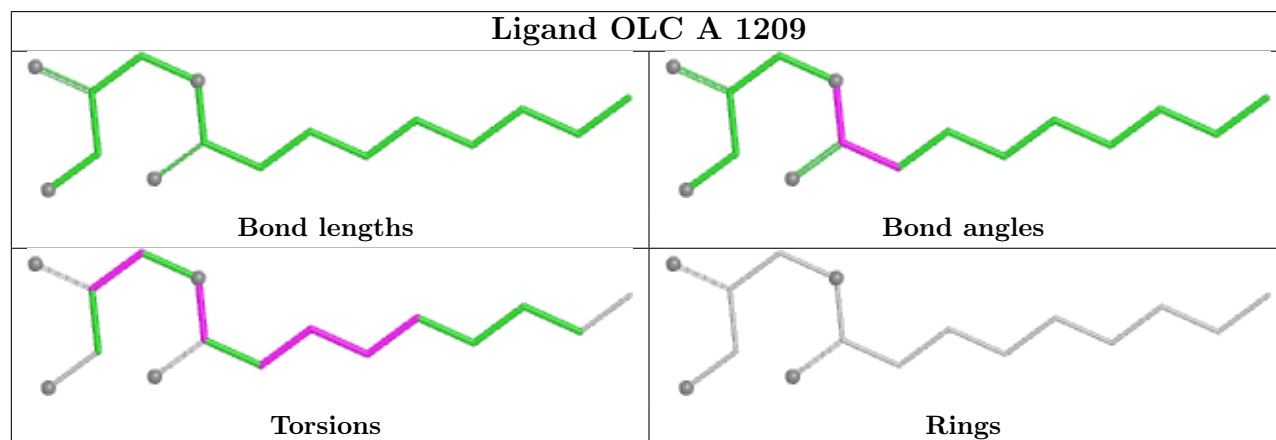
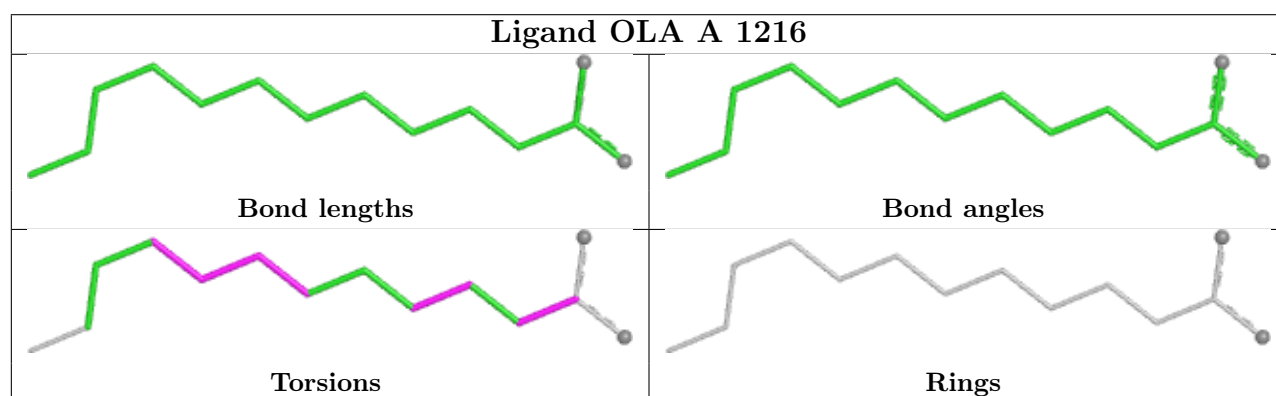
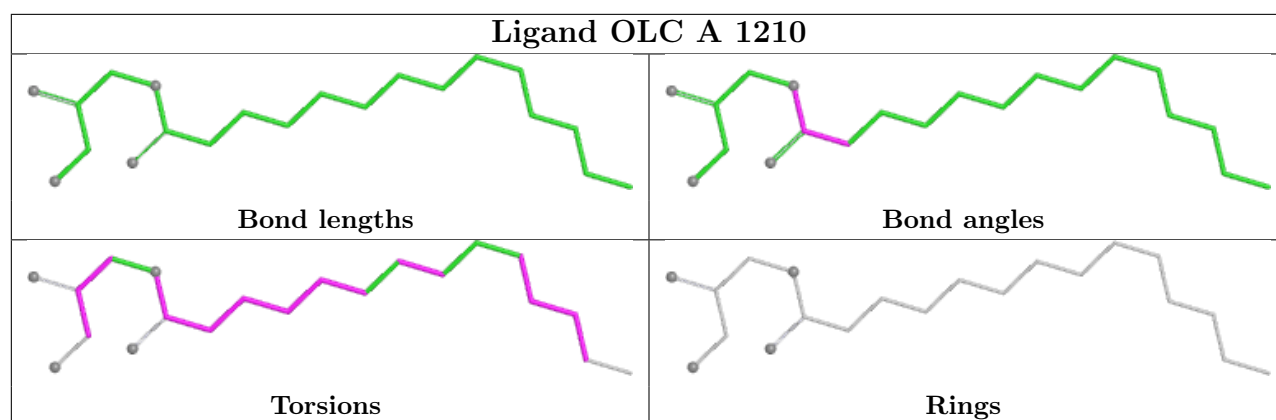
There are no ring outliers.

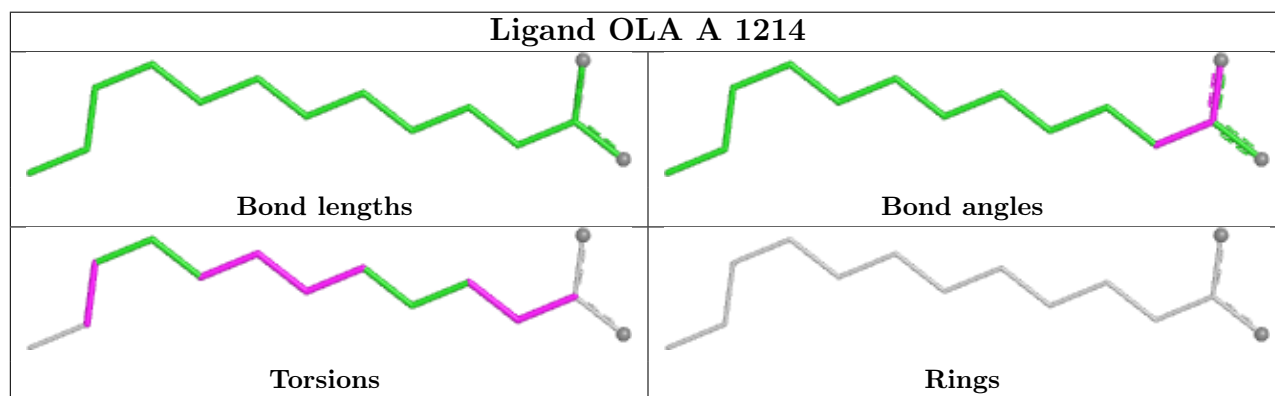
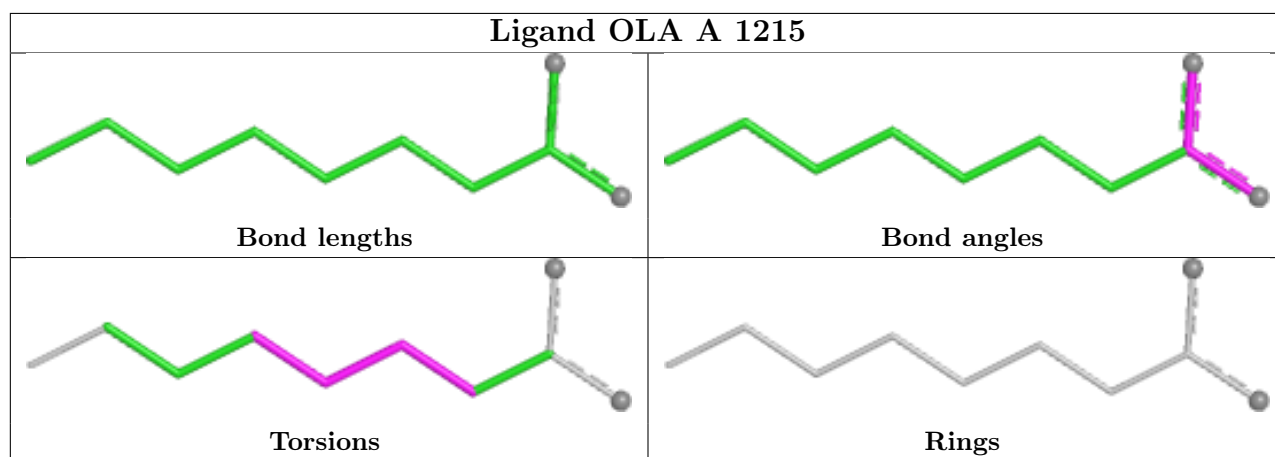
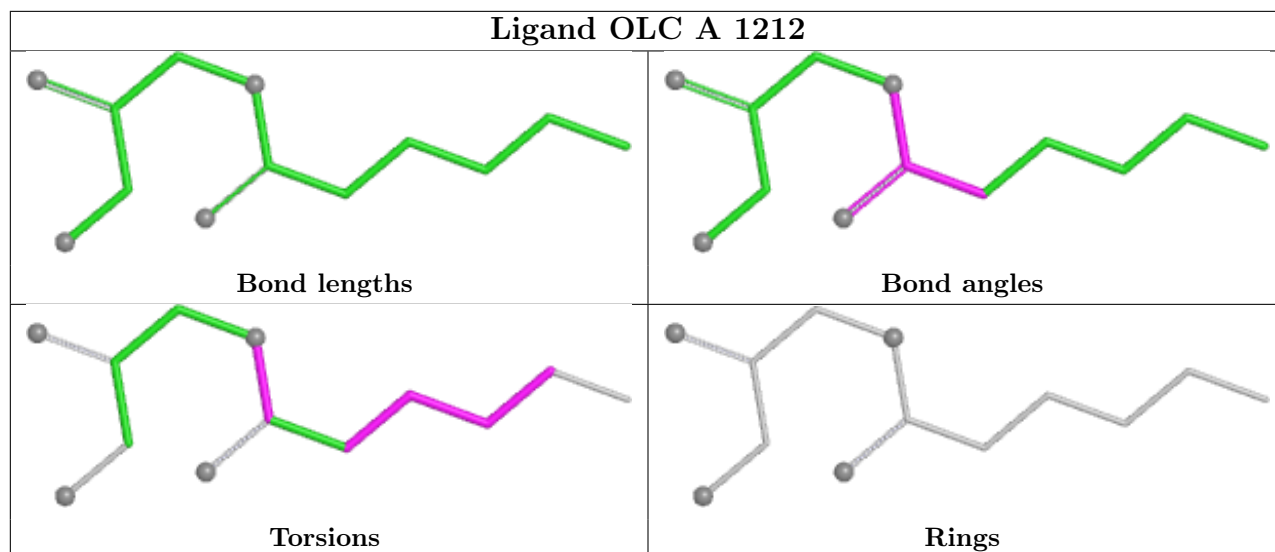
5 monomers are involved in 6 short contacts:

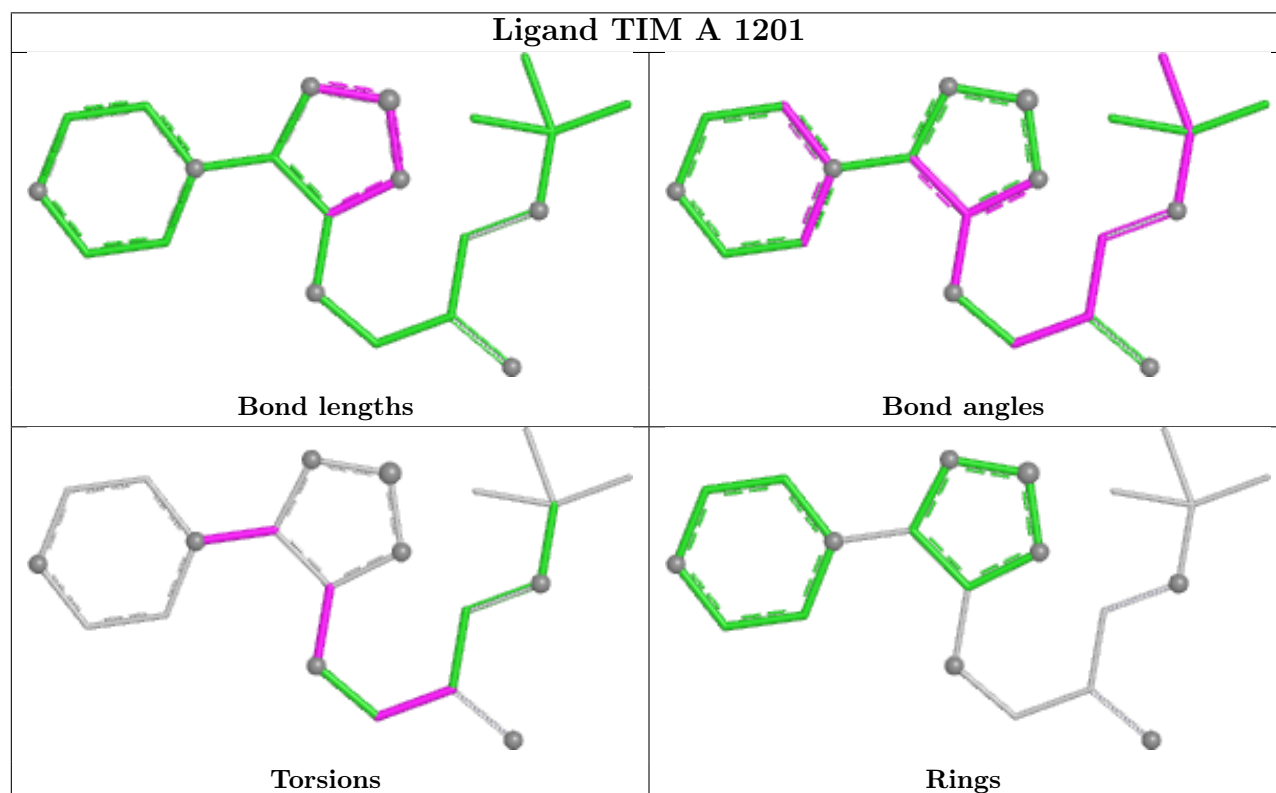
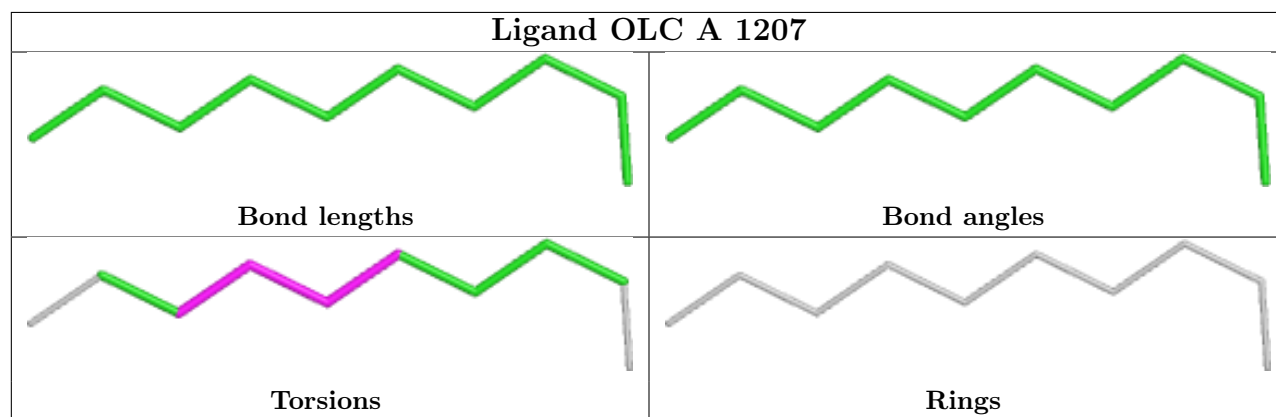
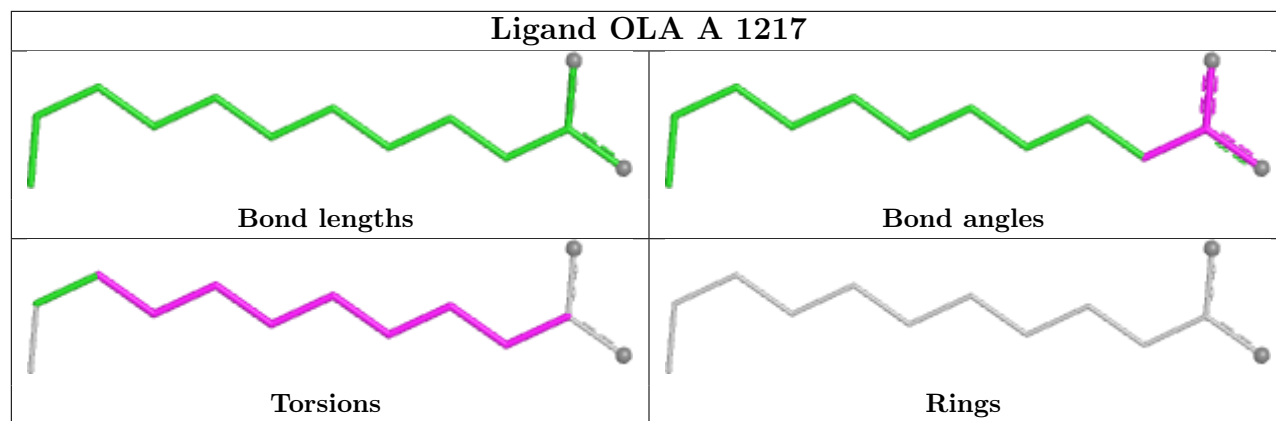
Mol	Chain	Res	Type	Clashes	Symm-Clashes
4	A	1206	CLR	1	0
5	A	1210	OLC	1	0
6	A	1215	OLA	1	0
6	A	1217	OLA	2	0
2	A	1201	TIM	1	0

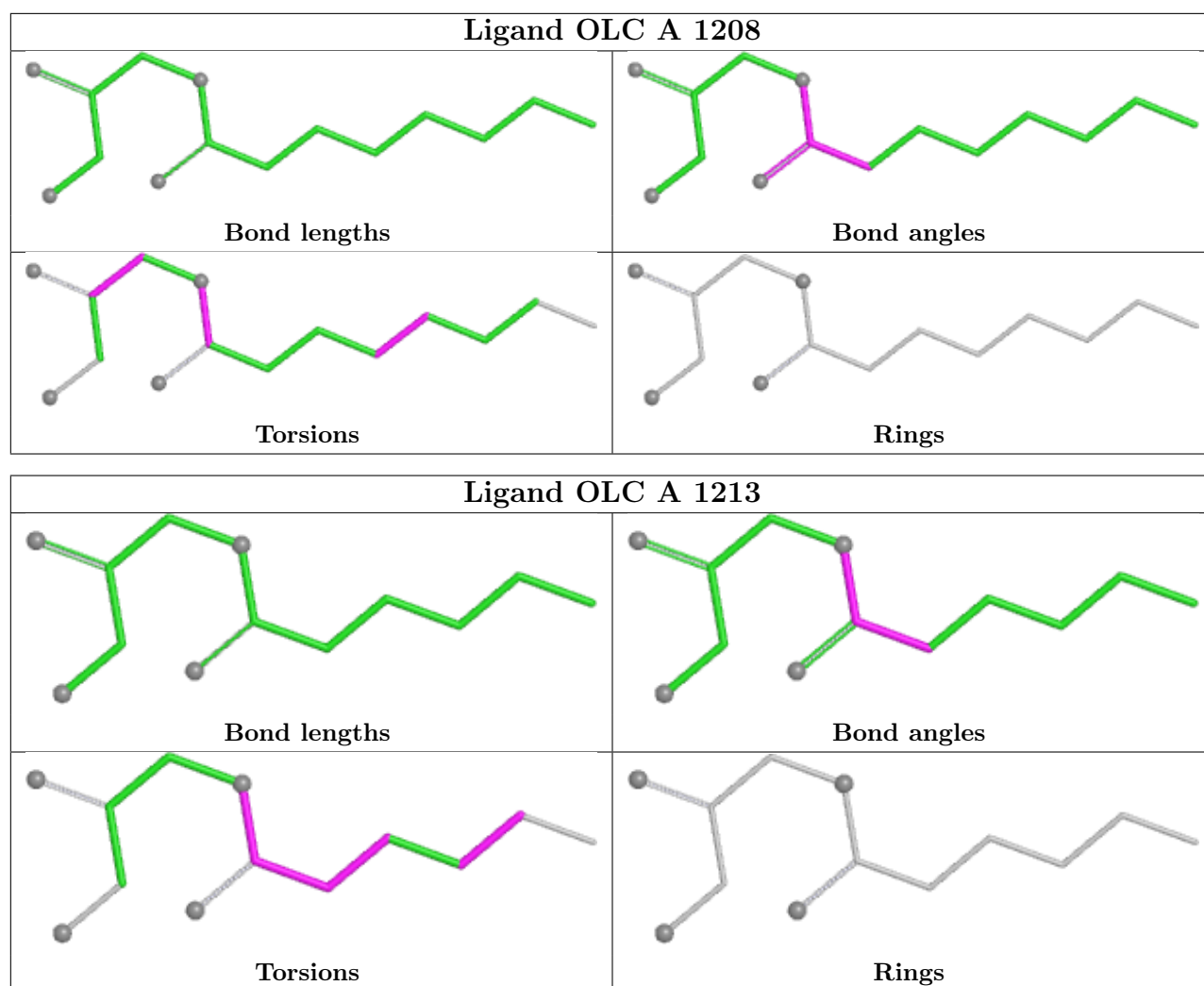
The following is a two-dimensional graphical depiction of Mogul quality analysis of bond lengths, bond angles, torsion angles, and ring geometry for all instances of the Ligand of Interest. In addition, ligands with molecular weight > 250 and outliers as shown on the validation Tables will also be included. For torsion angles, if less than 5% of the Mogul distribution of torsion angles is within 10 degrees of the torsion angle in question, then that torsion angle is considered an outlier. Any bond that is central to one or more torsion angles identified as an outlier by Mogul will be highlighted in the graph. For rings, the root-mean-square deviation (RMSD) between the ring in question and similar rings identified by Mogul is calculated over all ring torsion angles. If the average RMSD is greater than 60 degrees and the minimal RMSD between the ring in question and any Mogul-identified rings is also greater than 60 degrees, then that ring is considered an outlier. The outliers are highlighted in purple. The color gray indicates Mogul did not find sufficient equivalents in the CSD to analyse the geometry.











5.7 Other polymers [i](#)

There are no such residues in this entry.

5.8 Polymer linkage issues [i](#)

There are no chain breaks in this entry.

6 Fit of model and data [i](#)

6.1 Protein, DNA and RNA chains [i](#)

In the following table, the column labelled '#RSRZ > 2' contains the number (and percentage) of RSRZ outliers, followed by percent RSRZ outliers for the chain as percentile scores relative to all X-ray entries and entries of similar resolution. The OWAB column contains the minimum, median, 95th percentile and maximum values of the occupancy-weighted average B-factor per residue. The column labelled 'Q < 0.9' lists the number of (and percentage) of residues with an average occupancy less than 0.9.

Mol	Chain	Analysed	<RSRZ>	#RSRZ>2	OWAB(Å ²)	Q<0.9
1	A	443/506 (87%)	0.23	3 (0%) 84 83	40, 82, 122, 161	2 (0%)

All (3) RSRZ outliers are listed below:

Mol	Chain	Res	Type	RSRZ
1	A	342	LEU	3.0
1	A	193	PHE	2.2
1	A	117	VAL	2.0

6.2 Non-standard residues in protein, DNA, RNA chains [i](#)

There are no non-standard protein/DNA/RNA residues in this entry.

6.3 Carbohydrates [i](#)

There are no oligosaccharides in this entry.

6.4 Ligands [i](#)

In the following table, the Atoms column lists the number of modelled atoms in the group and the number defined in the chemical component dictionary. The B-factors column lists the minimum, median, 95th percentile and maximum values of B factors of atoms in the group. The column labelled 'Q < 0.9' lists the number of atoms with occupancy less than 0.9.

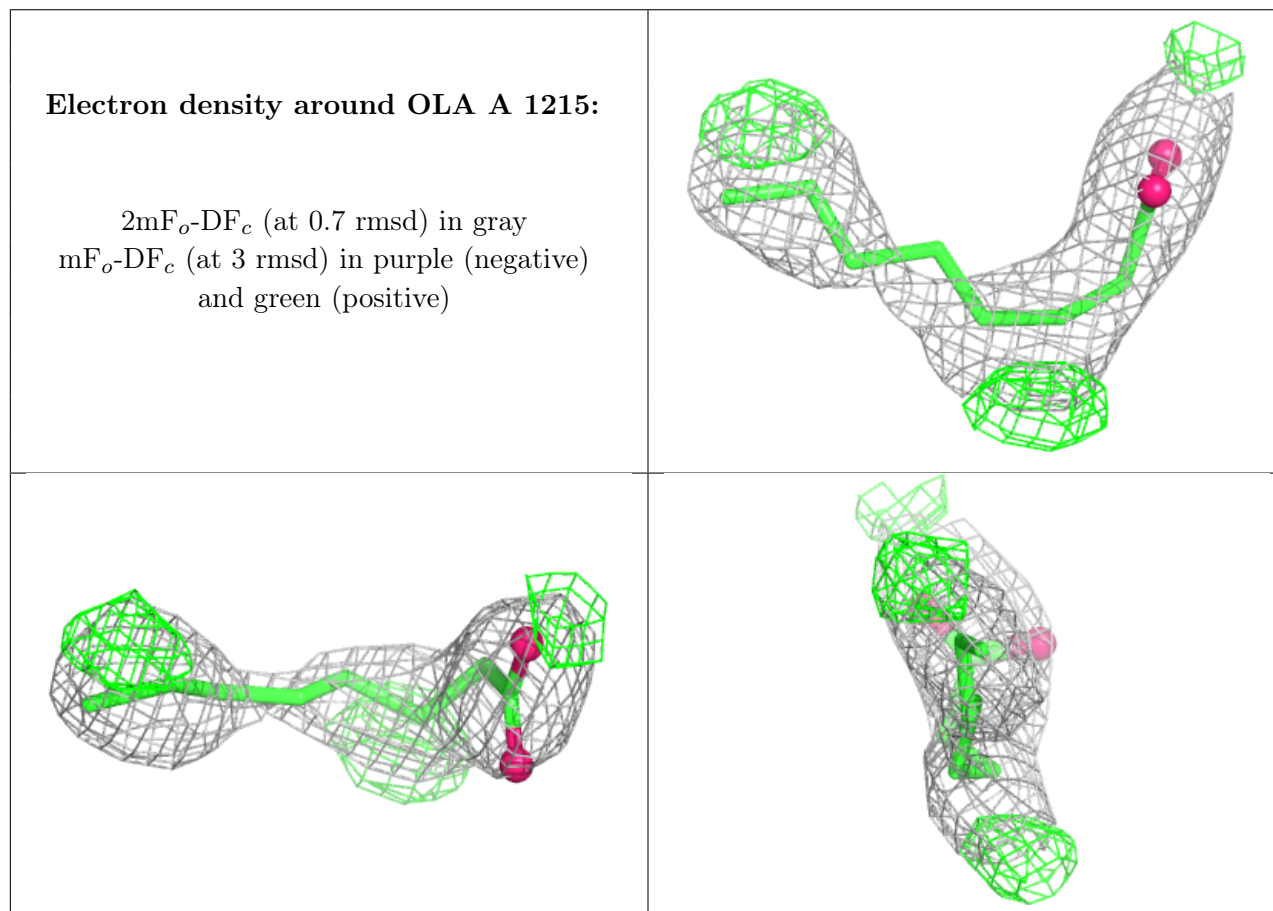
Mol	Type	Chain	Res	Atoms	RSCC	RSR	B-factors(Å ²)	Q<0.9
3	SO4	A	1205	5/5	0.63	0.12	208,208,208,208	0
6	OLA	A	1215	10/20	0.68	0.26	86,91,94,94	0
5	OLC	A	1211	18/25	0.69	0.18	106,117,122,122	0
3	SO4	A	1204	5/5	0.77	0.08	161,161,161,161	0

Continued on next page...

Continued from previous page...

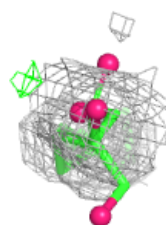
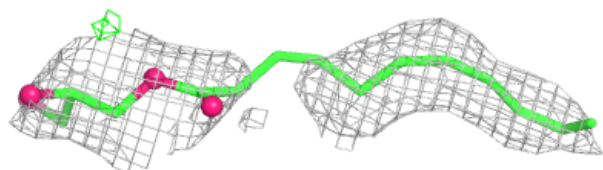
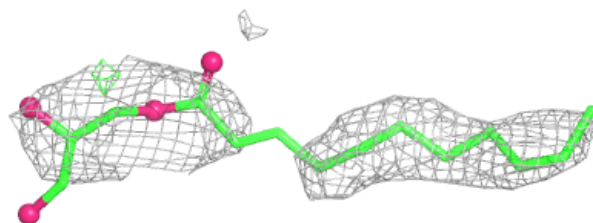
Mol	Type	Chain	Res	Atoms	RSCC	RSR	B-factors(Å ²)	Q<0.9
5	OLC	A	1212	13/25	0.78	0.19	104,111,114,115	0
3	SO4	A	1203	5/5	0.78	0.10	146,146,146,147	0
5	OLC	A	1209	16/25	0.80	0.16	105,110,113,114	0
5	OLC	A	1210	21/25	0.81	0.20	101,110,124,124	0
5	OLC	A	1208	15/25	0.81	0.18	98,103,107,108	0
5	OLC	A	1213	13/25	0.83	0.21	123,127,127,127	0
6	OLA	A	1216	14/20	0.83	0.14	102,104,106,106	0
6	OLA	A	1217	13/20	0.83	0.17	95,96,105,106	0
6	OLA	A	1214	14/20	0.86	0.15	97,98,100,100	0
4	CLR	A	1206	28/28	0.86	0.15	105,113,114,114	0
5	OLC	A	1207	10/25	0.88	0.15	85,87,88,89	0
2	TIM	A	1201	21/21	0.93	0.11	65,71,75,76	0
3	SO4	A	1202	5/5	0.96	0.05	77,78,78,78	0

The following is a graphical depiction of the model fit to experimental electron density of all instances of the Ligand of Interest. In addition, ligands with molecular weight > 250 and outliers as shown on the geometry validation Tables will also be included. Each fit is shown from different orientation to approximate a three-dimensional view.

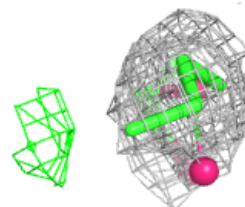
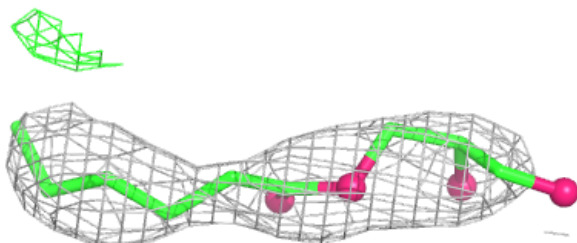
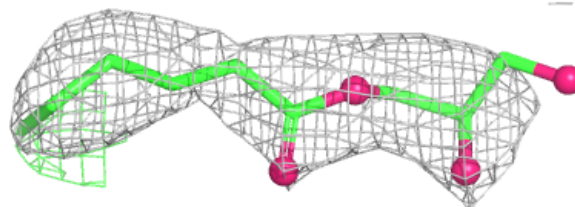


Electron density around OLC A 1211:

$2mF_o-DF_c$ (at 0.7 rmsd) in gray
 mF_o-DF_c (at 3 rmsd) in purple (negative)
and green (positive)

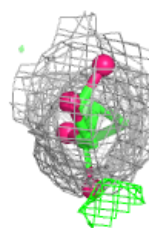
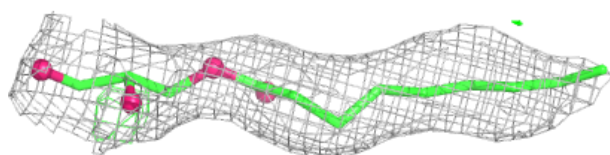
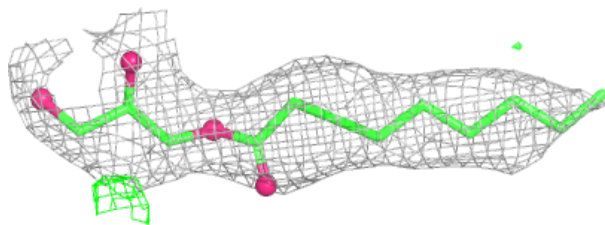
**Electron density around OLC A 1212:**

$2mF_o-DF_c$ (at 0.7 rmsd) in gray
 mF_o-DF_c (at 3 rmsd) in purple (negative)
and green (positive)

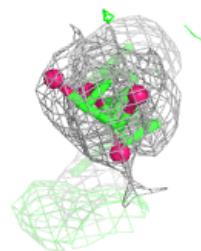
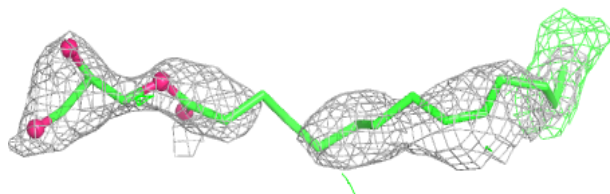
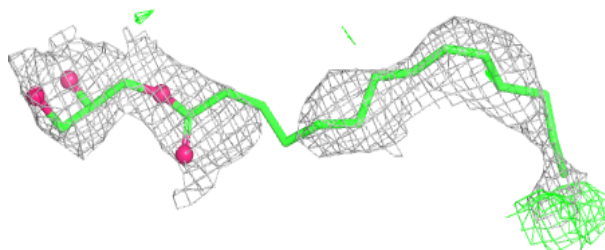


Electron density around OLC A 1209:

$2mF_o-DF_c$ (at 0.7 rmsd) in gray
 mF_o-DF_c (at 3 rmsd) in purple (negative)
and green (positive)

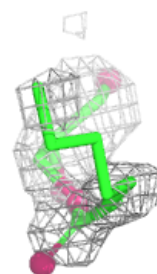
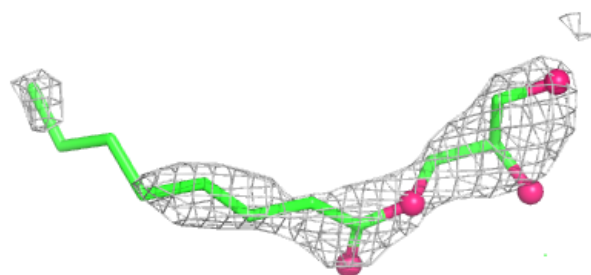
**Electron density around OLC A 1210:**

$2mF_o-DF_c$ (at 0.7 rmsd) in gray
 mF_o-DF_c (at 3 rmsd) in purple (negative)
and green (positive)

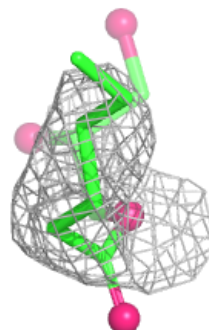
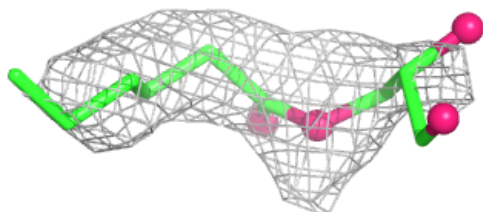
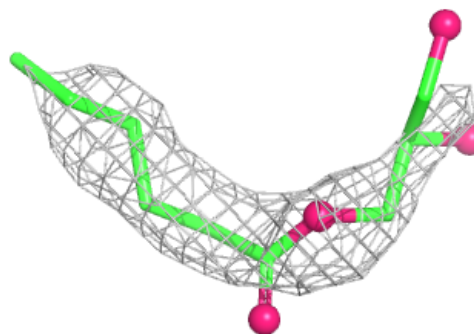


Electron density around OLC A 1208:

$2mF_o-DF_c$ (at 0.7 rmsd) in gray
 mF_o-DF_c (at 3 rmsd) in purple (negative)
and green (positive)

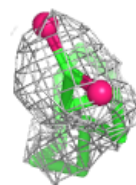
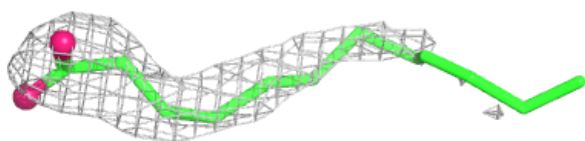
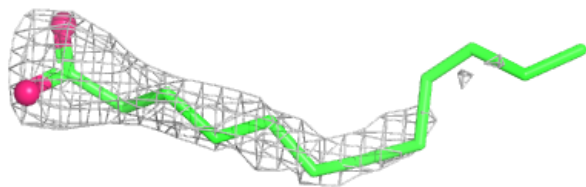
**Electron density around OLC A 1213:**

$2mF_o-DF_c$ (at 0.7 rmsd) in gray
 mF_o-DF_c (at 3 rmsd) in purple (negative)
and green (positive)

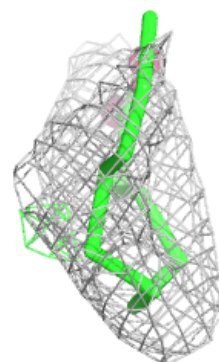
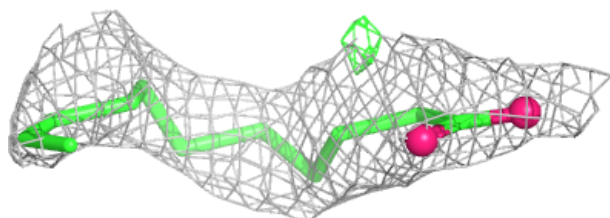
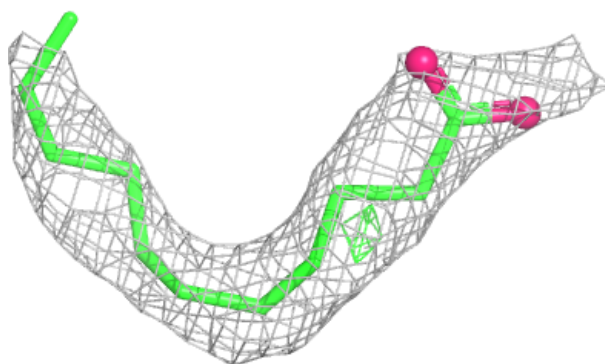


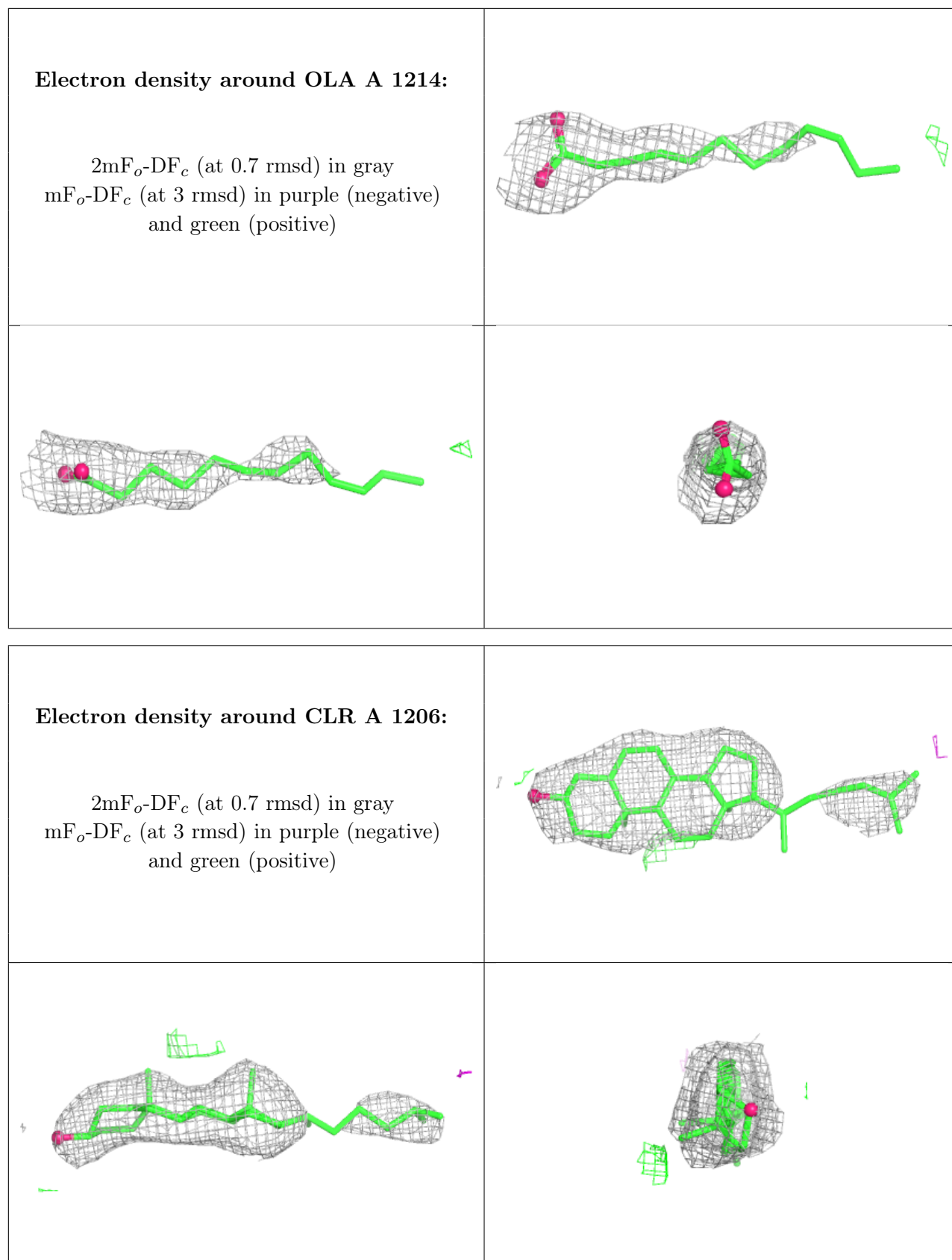
Electron density around OLA A 1216:

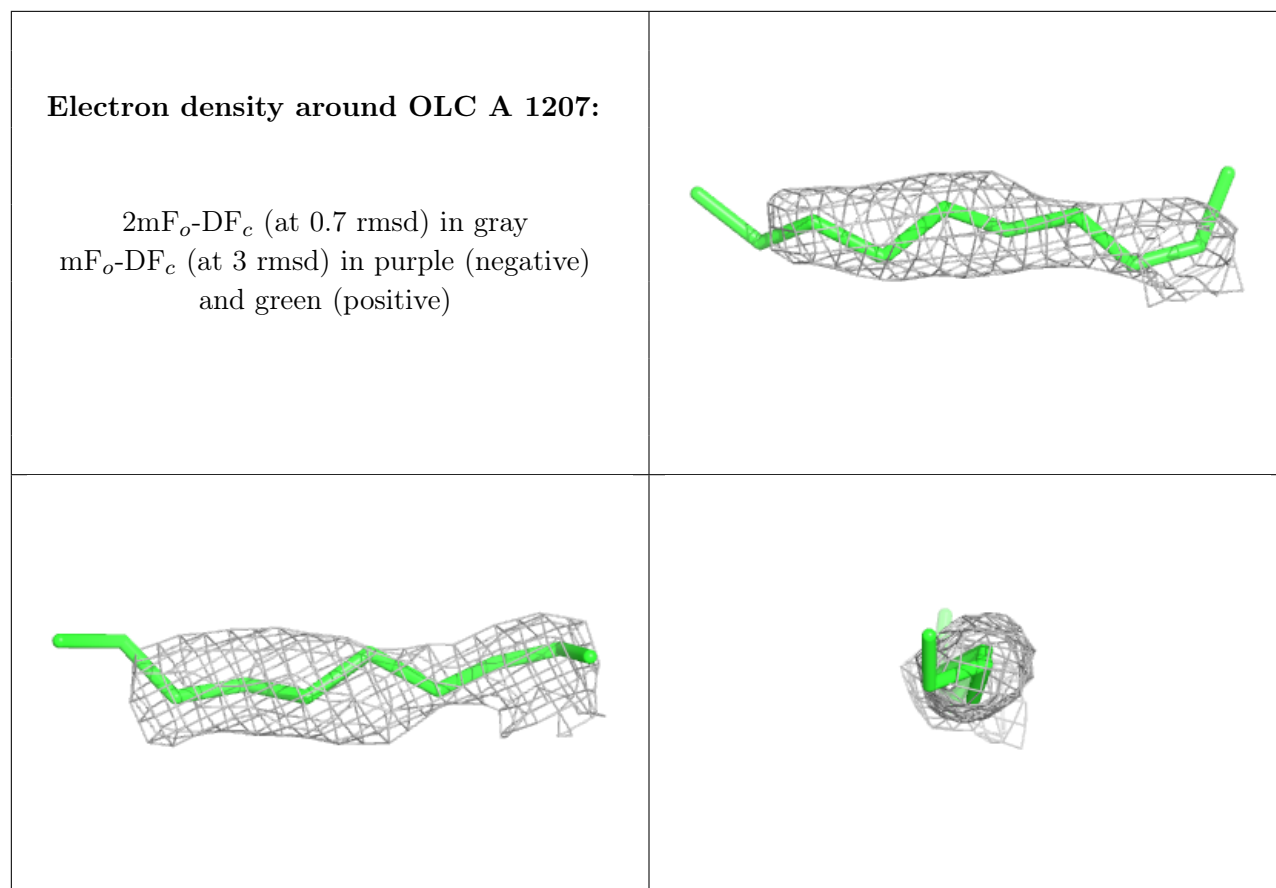
$2mF_o-DF_c$ (at 0.7 rmsd) in gray
 mF_o-DF_c (at 3 rmsd) in purple (negative)
and green (positive)

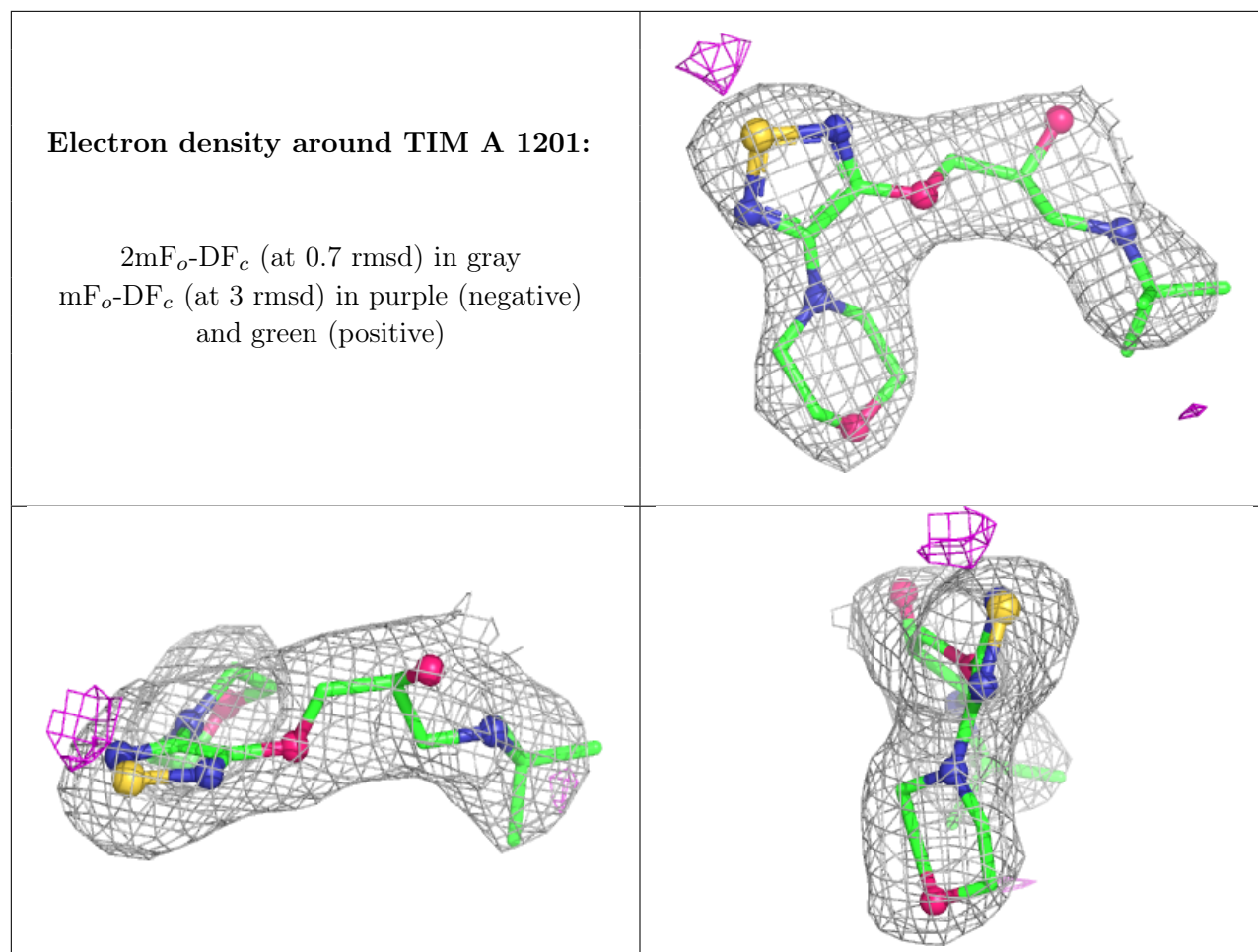
**Electron density around OLA A 1217:**

$2mF_o-DF_c$ (at 0.7 rmsd) in gray
 mF_o-DF_c (at 3 rmsd) in purple (negative)
and green (positive)









6.5 Other polymers [i](#)

There are no such residues in this entry.