



Full wwPDB X-ray Structure Validation Report ⓘ

Mar 9, 2026 – 03:16 PM UTC

PDB ID : 6OQ3 / pdb_00006oq3
Title : Crystal Structure of the Ternary Complex of KRIT1 bound to both the Rap1 GTPase and HKi2
Authors : Gingras, A.R.
Deposited on : 2019-04-25
Resolution : 1.85 Å(reported)

This is a Full wwPDB X-ray Structure Validation Report for a publicly released PDB entry.

We welcome your comments at validation@mail.wwpdb.org

A user guide is available at

<https://www.wwpdb.org/validation/2017/XrayValidationReportHelp>

with specific help available everywhere you see the ⓘ symbol.

The types of validation reports are described at

<http://www.wwpdb.org/validation/2017/FAQs#types>.

The following versions of software and data (see [references ⓘ](#)) were used in the production of this report:

MolProbity : 4-5-2 with Phenix2.0
Mogul : 2022.3.0, CSD as543be (2022)
Xtrriage (Phenix) : 2.0
EDS : 3.0
Buster-report : wwPDB partial adaption of 1.1.7 (2018)
Percentile statistics : 20250101.v01 (using entries in the PDB archive January 1st 2025)
CCP4 : 9.0.010 (Gargrove)
Density-Fitness : 1.0.12
Ideal geometry (proteins) : Engh & Huber (2001)
Ideal geometry (DNA, RNA) : Parkinson et al. (1996)
Validation Pipeline (wwPDB-VP) : 2.49

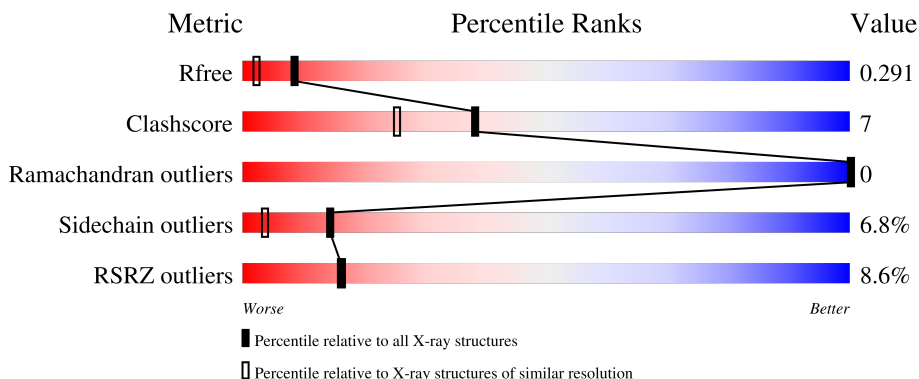
1 Overall quality at a glance

The following experimental techniques were used to determine the structure:

X-RAY DIFFRACTION

The reported resolution of this entry is 1.85 Å.

Percentile scores (ranging between 0-100) for global validation metrics of the entry are shown in the following graphic. The table shows the number of entries on which the scores are based.



Metric	Whole archive (#Entries)	Similar resolution (#Entries, resolution range(Å))
R_{free}	180053	3428 (1.86-1.86)
Clashscore	190562	3579 (1.86-1.86)
Ramachandran outliers	187476	3553 (1.86-1.86)
Sidechain outliers	187428	3553 (1.86-1.86)
RSRZ outliers	180081	3429 (1.86-1.86)

The table below summarises the geometric issues observed across the polymeric chains and their fit to the electron density. The red, orange, yellow and green segments of the lower bar indicate the fraction of residues that contain outliers for ≥ 3 , 2, 1 and 0 types of geometric quality criteria respectively. A grey segment represents the fraction of residues that are not modelled. The numeric value for each fraction is indicated below the corresponding segment, with a dot representing fractions $\leq 5\%$. The upper red bar (where present) indicates the fraction of residues that have poor fit to the electron density. The numeric value is given above the bar.

Mol	Chain	Length	Quality of chain
1	A	322	 10% 75% 19% . .
2	B	167	 6% 84% 11% . .

2 Entry composition i

There are 6 unique types of molecules in this entry. The entry contains 3936 atoms, of which 0 are hydrogens and 0 are deuteriums.

In the tables below, the ZeroOcc column contains the number of atoms modelled with zero occupancy, the AltConf column contains the number of residues with at least one atom in alternate conformation and the Trace column contains the number of residues modelled with at most 2 atoms.

- Molecule 1 is a protein called Krev interaction trapped protein 1.

Mol	Chain	Residues	Atoms					ZeroOcc	AltConf	Trace
			Total	C	N	O	S			
1	A	310	2549	1646	434	454	15	0	2	0

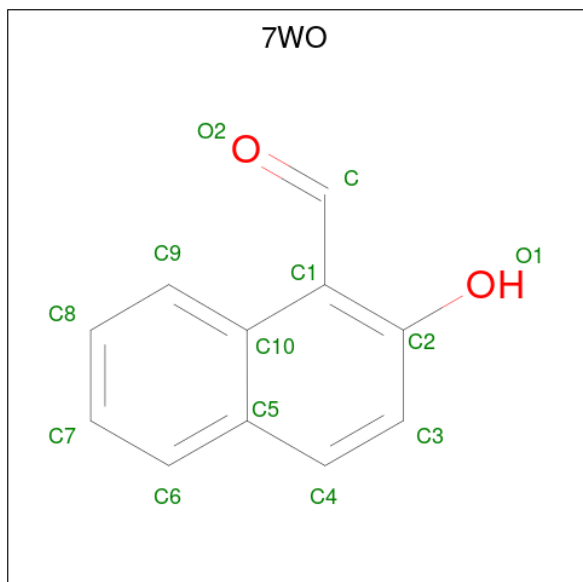
There are 2 discrepancies between the modelled and reference sequences:

Chain	Residue	Modelled	Actual	Comment	Reference
A	415	GLY	-	expression tag	UNP O00522
A	416	ALA	-	expression tag	UNP O00522

- Molecule 2 is a protein called Ras-related protein Rap-1b.

Mol	Chain	Residues	Atoms					ZeroOcc	AltConf	Trace
			Total	C	N	O	S			
2	B	164	1308	818	225	258	7	0	2	0

- Molecule 3 is 2-hydroxynaphthalene-1-carbaldehyde (CCD ID: 7WO) (formula: C₁₁H₈O₂) (labeled as "Ligand of Interest" by depositor).

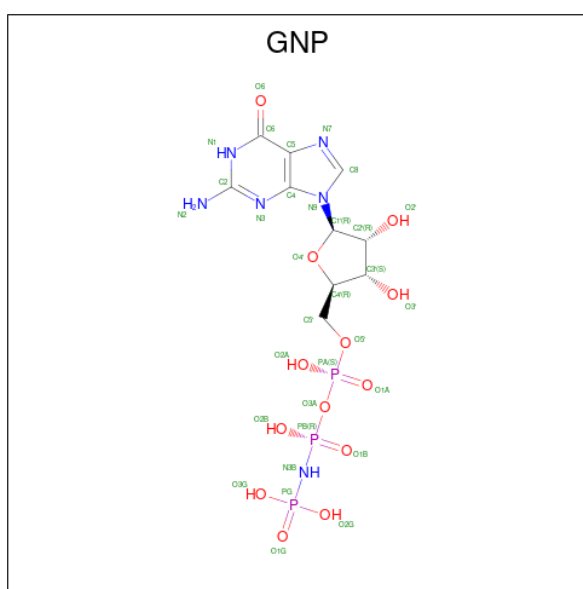


Mol	Chain	Residues	Atoms			ZeroOcc	AltConf
3	A	1	Total	C	O	0	0
			13	11	2		

- Molecule 4 is MAGNESIUM ION (CCD ID: MG) (formula: Mg).

Mol	Chain	Residues	Atoms		ZeroOcc	AltConf
4	B	1	Total	Mg	0	0
			1	1		

- Molecule 5 is PHOSPHOAMINOPHOSPHONIC ACID-GUANYLATE ESTER (CCD ID: GNP) (formula: C₁₀H₁₇N₆O₁₃P₃).



Mol	Chain	Residues	Atoms					ZeroOcc	AltConf
5	B	1	Total	C	N	O	P	0	0
			32	10	6	13	3		

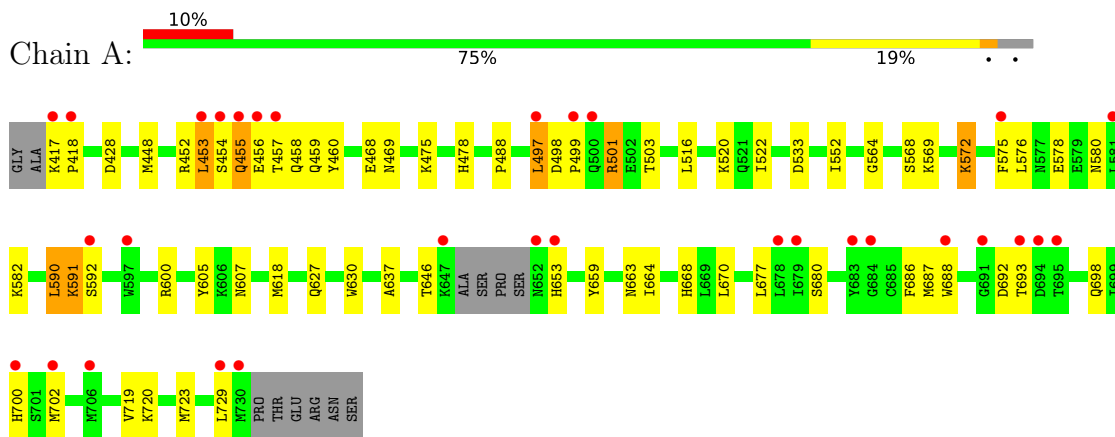
- Molecule 6 is water.

Mol	Chain	Residues	Atoms		ZeroOcc	AltConf
6	A	23	Total	O	0	0
			23	23		
6	B	10	Total	O	0	0
			10	10		

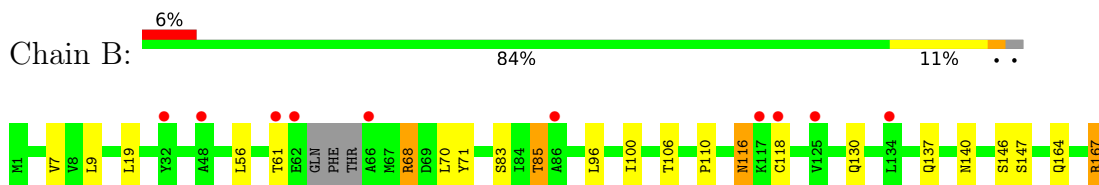
3 Residue-property plots [i](#)

These plots are drawn for all protein, RNA, DNA and oligosaccharide chains in the entry. The first graphic for a chain summarises the proportions of the various outlier classes displayed in the second graphic. The second graphic shows the sequence view annotated by issues in geometry and electron density. Residues are color-coded according to the number of geometric quality criteria for which they contain at least one outlier: green = 0, yellow = 1, orange = 2 and red = 3 or more. A red dot above a residue indicates a poor fit to the electron density ($RSRZ > 2$). Stretches of 2 or more consecutive residues without any outlier are shown as a green connector. Residues present in the sample, but not in the model, are shown in grey.

- Molecule 1: Krev interaction trapped protein 1



- Molecule 2: Ras-related protein Rap-1b



4 Data and refinement statistics i

Property	Value	Source
Space group	P 1 21 1	Depositor
Cell constants a, b, c, α , β , γ	57.11Å 76.83Å 58.21Å 90.00° 92.28° 90.00°	Depositor
Resolution (Å)	46.37 – 1.85 46.37 – 1.85	Depositor EDS
% Data completeness (in resolution range)	98.6 (46.37-1.85) 98.6 (46.37-1.85)	Depositor EDS
R_{merge}	0.05	Depositor
R_{sym}	(Not available)	Depositor
$\langle I/\sigma(I) \rangle$ ¹	1.43 (at 1.86Å)	Xtrriage
Refinement program	REFMAC 5.8.0253	Depositor
R, R_{free}	0.244 , 0.292 0.244 , 0.291	Depositor DCC
R_{free} test set	2119 reflections (5.00%)	wwPDB-VP
Wilson B-factor (Å ²)	38.2	Xtrriage
Anisotropy	0.186	Xtrriage
Bulk solvent k_{sol} (e/Å ³), B_{sol} (Å ²)	0.36 , 37.0	EDS
L-test for twinning ²	$\langle L \rangle = 0.50$, $\langle L^2 \rangle = 0.33$	Xtrriage
Estimated twinning fraction	0.000 for l,k,-h 0.024 for h,-k,-l 0.021 for l,-k,h	Xtrriage
F_o, F_c correlation	0.96	EDS
Total number of atoms	3936	wwPDB-VP
Average B, all atoms (Å ²)	52.0	wwPDB-VP

Xtrriage's analysis on translational NCS is as follows: *The largest off-origin peak in the Patterson function is 5.65% of the height of the origin peak. No significant pseudotranslation is detected.*

¹Intensities estimated from amplitudes.

²Theoretical values of $\langle |L| \rangle$, $\langle L^2 \rangle$ for acentric reflections are 0.5, 0.333 respectively for untwinned datasets, and 0.375, 0.2 for perfectly twinned datasets.

5 Model quality [i](#)

5.1 Standard geometry [i](#)

Bond lengths and bond angles in the following residue types are not validated in this section: GNP, 7WO, MG

The Z score for a bond length (or angle) is the number of standard deviations the observed value is removed from the expected value. A bond length (or angle) with $|Z| > 5$ is considered an outlier worth inspection. RMSZ is the root-mean-square of all Z scores of the bond lengths (or angles).

Mol	Chain	Bond lengths		Bond angles	
		RMSZ	# Z >5	RMSZ	# Z >5
1	A	0.43	0/2613	0.97	0/3530
2	B	0.42	0/1328	1.00	0/1789
All	All	0.43	0/3941	0.98	0/5319

There are no bond length outliers.

There are no bond angle outliers.

There are no chirality outliers.

There are no planarity outliers.

5.2 Too-close contacts [i](#)

In the following table, the Non-H and H(model) columns list the number of non-hydrogen atoms and hydrogen atoms in the chain respectively. The H(added) column lists the number of hydrogen atoms added and optimized by MolProbity. The Clashes column lists the number of clashes within the asymmetric unit, whereas Symm-Clashes lists symmetry-related clashes.

Mol	Chain	Non-H	H(model)	H(added)	Clashes	Symm-Clashes
1	A	2549	0	2591	41	1
2	B	1308	0	1296	13	1
3	A	13	0	0	0	0
4	B	1	0	0	0	0
5	B	32	0	13	0	0
6	A	23	0	0	0	0
6	B	10	0	0	0	0
All	All	3936	0	3900	54	1

The all-atom clashscore is defined as the number of clashes found per 1000 atoms (including hydrogen atoms). The all-atom clashscore for this structure is 7.

All (54) close contacts within the same asymmetric unit are listed below, sorted by their clash magnitude.

Atom-1	Atom-2	Interatomic distance (Å)	Clash overlap (Å)
2:B:116:ASN:ND2	2:B:146:SER:OG	2.19	0.76
1:A:475:LYS:H	1:A:478:HIS:CD2	2.13	0.66
1:A:498:ASP:O	1:A:501:ARG:HB2	1.97	0.64
1:A:452:ARG:O	1:A:452:ARG:HG2	1.99	0.61
1:A:659:TYR:HB2	1:A:670:LEU:HB2	1.83	0.60
1:A:668:HIS:HD2	1:A:680:SER:OG	1.86	0.59
2:B:118:CYS:SG	2:B:147:SER:HB2	2.44	0.57
1:A:455:GLN:HE21	1:A:455:GLN:H	1.51	0.57
1:A:453:LEU:HB2	1:A:458:GLN:HG3	1.87	0.56
1:A:687:MET:HE3	1:A:700:HIS:HB2	1.88	0.56
2:B:56:LEU:HD21	2:B:71:TYR:CE1	2.40	0.56
1:A:564:GLY:O	1:A:605:TYR:OH	2.23	0.55
1:A:646:THR:O	1:A:653:HIS:HA	2.06	0.55
1:A:452:ARG:O	1:A:452:ARG:CG	2.54	0.54
1:A:687:MET:HE2	1:A:702:MET:HB3	1.89	0.54
2:B:110:PRO:HA	2:B:164:GLN:OE1	2.09	0.53
2:B:56:LEU:HD21	2:B:71:TYR:CD1	2.44	0.52
2:B:164:GLN:O	2:B:167:ARG:HG2	2.10	0.52
1:A:417:LYS:N	1:A:418:PRO:CD	2.73	0.52
1:A:417:LYS:N	1:A:418:PRO:HD2	2.26	0.51
1:A:460:TYR:CZ	1:A:522:ILE:HG12	2.47	0.50
1:A:663:ASN:OD1	1:A:668:HIS:HE1	1.94	0.50
2:B:83:SER:C	2:B:85:THR:H	2.18	0.49
1:A:455:GLN:HE21	1:A:455:GLN:N	2.11	0.48
2:B:96:LEU:O	2:B:100:ILE:HG13	2.14	0.48
1:A:475:LYS:H	1:A:478:HIS:HD2	1.61	0.48
1:A:686:PHE:CE2	1:A:688:TRP:CE3	3.02	0.47
1:A:428:ASP:HB3	1:A:533[A]:ASP:OD1	2.15	0.47
2:B:83:SER:OG	2:B:85:THR:HB	2.15	0.47
1:A:590:LEU:HD12	1:A:591:LYS:HE3	1.97	0.47
2:B:19:LEU:HD21	2:B:116:ASN:HD21	1.80	0.47
1:A:456:GLU:O	1:A:459:GLN:HG2	2.15	0.47
1:A:469:ASN:HB3	1:A:497:LEU:HD11	1.97	0.47
1:A:686:PHE:CE2	1:A:688:TRP:HE3	2.34	0.46
1:A:453:LEU:HB3	1:A:457:THR:HB	1.96	0.46
2:B:7:VAL:HG12	2:B:9:LEU:HG	1.98	0.44
1:A:627:GLN:HA	1:A:630:TRP:CE3	2.53	0.43
1:A:575:PHE:O	1:A:580:ASN:ND2	2.44	0.43
1:A:688:TRP:HA	1:A:698:GLN:O	2.19	0.43
1:A:720:LYS:HA	1:A:723:MET:HE2	2.00	0.43

Continued on next page...

Continued from previous page...

Atom-1	Atom-2	Interatomic distance (Å)	Clash overlap (Å)
1:A:448:MET:HE3	1:A:458:GLN:HG2	2.01	0.43
1:A:582:LYS:HB2	1:A:582:LYS:HE3	1.92	0.42
1:A:719:VAL:O	1:A:723:MET:HG3	2.19	0.42
1:A:498:ASP:HA	1:A:499:PRO:HD3	1.85	0.42
1:A:677:LEU:HD21	1:A:680:SER:HB2	2.02	0.42
2:B:68:ARG:NH2	2:B:96:LEU:HD21	2.35	0.42
1:A:453:LEU:O	1:A:458:GLN:NE2	2.53	0.41
1:A:568:SER:O	1:A:572:LYS:HG3	2.19	0.41
2:B:167:ARG:HE	2:B:167:ARG:HB3	1.56	0.41
1:A:516:LEU:HG	1:A:520:LYS:HE3	2.02	0.41
1:A:576:LEU:HD23	1:A:576:LEU:HA	1.86	0.41
1:A:687:MET:HE3	1:A:700:HIS:CB	2.49	0.40
1:A:637:ALA:HA	1:A:663:ASN:HB3	2.03	0.40
1:A:488:PRO:HB3	1:A:499:PRO:HB2	2.04	0.40

All (1) symmetry-related close contacts are listed below. The label for Atom-2 includes the symmetry operator and encoded unit-cell translations to be applied.

Atom-1	Atom-2	Interatomic distance (Å)	Clash overlap (Å)
1:A:503:THR:OG1	2:B:130[B]:GLN:OE1[2_756]	2.01	0.19

5.3 Torsion angles [i](#)

5.3.1 Protein backbone [i](#)

In the following table, the Percentiles column shows the percent Ramachandran outliers of the chain as a percentile score with respect to all X-ray entries followed by that with respect to entries of similar resolution.

The Analysed column shows the number of residues for which the backbone conformation was analysed, and the total number of residues.

Mol	Chain	Analysed	Favoured	Allowed	Outliers	Percentiles	
1	A	308/322 (96%)	298 (97%)	10 (3%)	0	100	100
2	B	162/167 (97%)	154 (95%)	8 (5%)	0	100	100
All	All	470/489 (96%)	452 (96%)	18 (4%)	0	100	100

There are no Ramachandran outliers to report.

5.3.2 Protein sidechains [i](#)

In the following table, the Percentiles column shows the percent sidechain outliers of the chain as a percentile score with respect to all X-ray entries followed by that with respect to entries of similar resolution.

The Analysed column shows the number of residues for which the sidechain conformation was analysed, and the total number of residues.

Mol	Chain	Analysed	Rotameric	Outliers	Percentiles	
1	A	284/293 (97%)	264 (93%)	20 (7%)	14	3
2	B	144/147 (98%)	135 (94%)	9 (6%)	16	4
All	All	428/440 (97%)	399 (93%)	29 (7%)	14	4

All (29) residues with a non-rotameric sidechain are listed below:

Mol	Chain	Res	Type
1	A	453	LEU
1	A	454	SER
1	A	455	GLN
1	A	468	GLU
1	A	497	LEU
1	A	501	ARG
1	A	552	ILE
1	A	569	LYS
1	A	572	LYS
1	A	578	GLU
1	A	590	LEU
1	A	591	LYS
1	A	592	SER
1	A	600	ARG
1	A	607	ASN
1	A	618	MET
1	A	664	ILE
1	A	692	ASP
1	A	693	THR
1	A	729	LEU
2	B	61	THR
2	B	68	ARG
2	B	70	LEU
2	B	85	THR
2	B	106	THR
2	B	116	ASN
2	B	137	GLN

Continued on next page...

Continued from previous page...

Mol	Chain	Res	Type
2	B	140	ASN
2	B	167	ARG

Sometimes sidechains can be flipped to improve hydrogen bonding and reduce clashes. All (13) such sidechains are listed below:

Mol	Chain	Res	Type
1	A	455	GLN
1	A	458	GLN
1	A	459	GLN
1	A	478	HIS
1	A	482	GLN
1	A	483	HIS
1	A	496	ASN
1	A	521	GLN
1	A	560	GLN
1	A	668	HIS
1	A	698	GLN
2	B	116	ASN
2	B	166	ASN

5.3.3 RNA [i](#)

There are no RNA molecules in this entry.

5.4 Non-standard residues in protein, DNA, RNA chains [i](#)

There are no non-standard protein/DNA/RNA residues in this entry.

5.5 Carbohydrates [i](#)

There are no oligosaccharides in this entry.

5.6 Ligand geometry [i](#)

Of 3 ligands modelled in this entry, 1 is monoatomic - leaving 2 for Mogul analysis.

In the following table, the Counts columns list the number of bonds (or angles) for which Mogul statistics could be retrieved, the number of bonds (or angles) that are observed in the model and the number of bonds (or angles) that are defined in the Chemical Component Dictionary. The

Link column lists molecule types, if any, to which the group is linked. The Z score for a bond length (or angle) is the number of standard deviations the observed value is removed from the expected value. A bond length (or angle) with $|Z| > 2$ is considered an outlier worth inspection. RMSZ is the root-mean-square of all Z scores of the bond lengths (or angles).

Mol	Type	Chain	Res	Link	Bond lengths			Bond angles		
					Counts	RMSZ	# Z > 2	Counts	RMSZ	# Z > 2
3	7WO	A	801	-	14,14,14	0.48	0	19,19,19	0.65	1 (5%)
5	GNP	B	201	4	34,34,34	1.07	5 (14%)	47,54,54	1.01	3 (6%)

In the following table, the Chirals column lists the number of chiral outliers, the number of chiral centers analysed, the number of these observed in the model and the number defined in the Chemical Component Dictionary. Similar counts are reported in the Torsion and Rings columns. '2' means no outliers of that kind were identified.

Mol	Type	Chain	Res	Link	Chirals	Torsions	Rings
3	7WO	A	801	-	-	2/2/2/2	0/2/2/2
5	GNP	B	201	4	-	5/18/38/38	0/3/3/3

All (5) bond length outliers are listed below:

Mol	Chain	Res	Type	Atoms	Z	Observed(Å)	Ideal(Å)
5	B	201	GNP	PB-O1B	3.31	1.51	1.46
5	B	201	GNP	PG-O1G	3.01	1.50	1.46
5	B	201	GNP	PG-O2G	-2.22	1.50	1.56
5	B	201	GNP	PB-O2B	-2.21	1.50	1.56
5	B	201	GNP	PG-O3G	-2.13	1.51	1.56

All (4) bond angle outliers are listed below:

Mol	Chain	Res	Type	Atoms	Z	Observed(°)	Ideal(°)
5	B	201	GNP	O2B-PB-O1B	3.88	118.19	109.87
5	B	201	GNP	O2G-PG-O1G	-2.87	106.25	113.45
5	B	201	GNP	O3G-PG-O1G	-2.52	107.12	113.45
3	A	801	7WO	C2-C1-C	-2.18	117.54	119.82

There are no chirality outliers.

All (7) torsion outliers are listed below:

Mol	Chain	Res	Type	Atoms
3	A	801	7WO	O2-C-C1-C10
3	A	801	7WO	O2-C-C1-C2

Continued on next page...

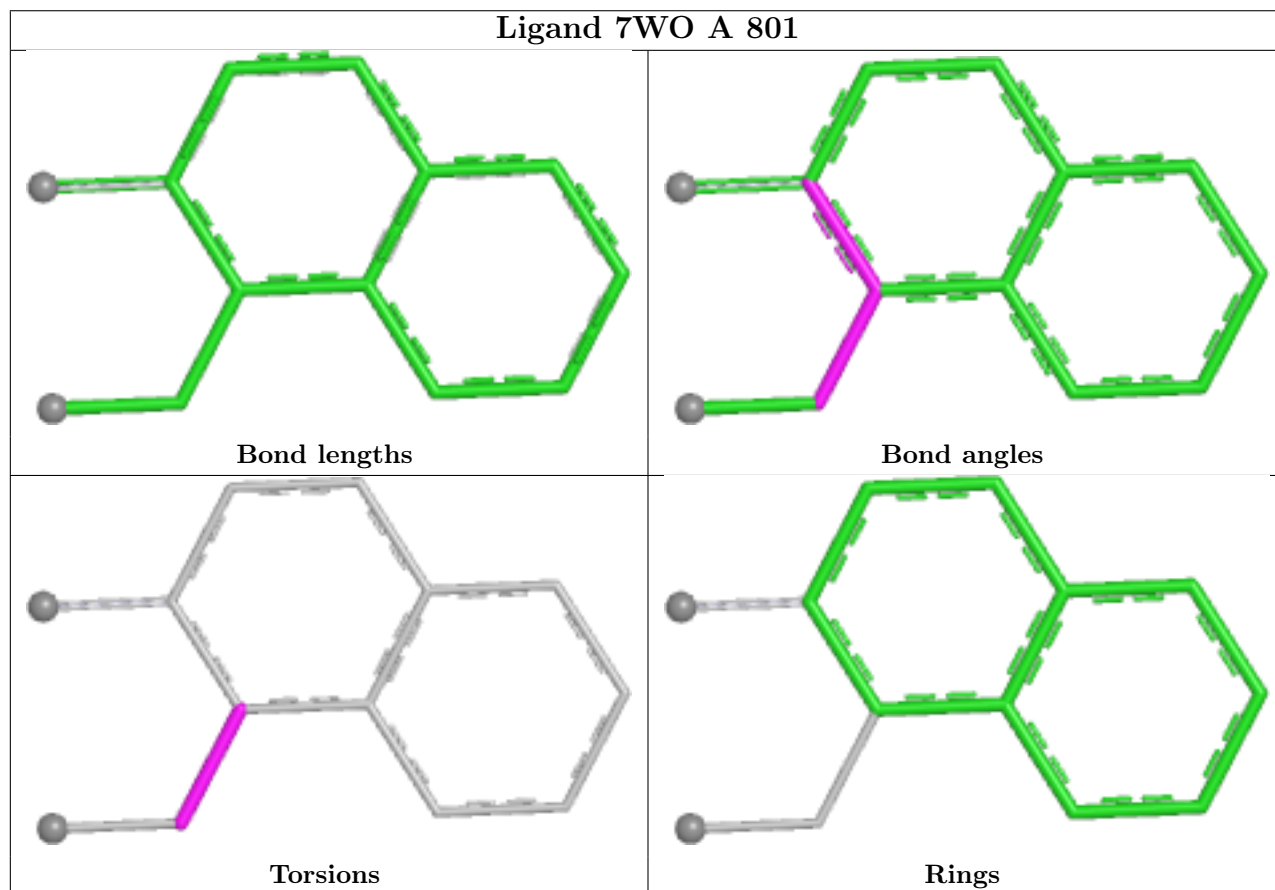
Continued from previous page...

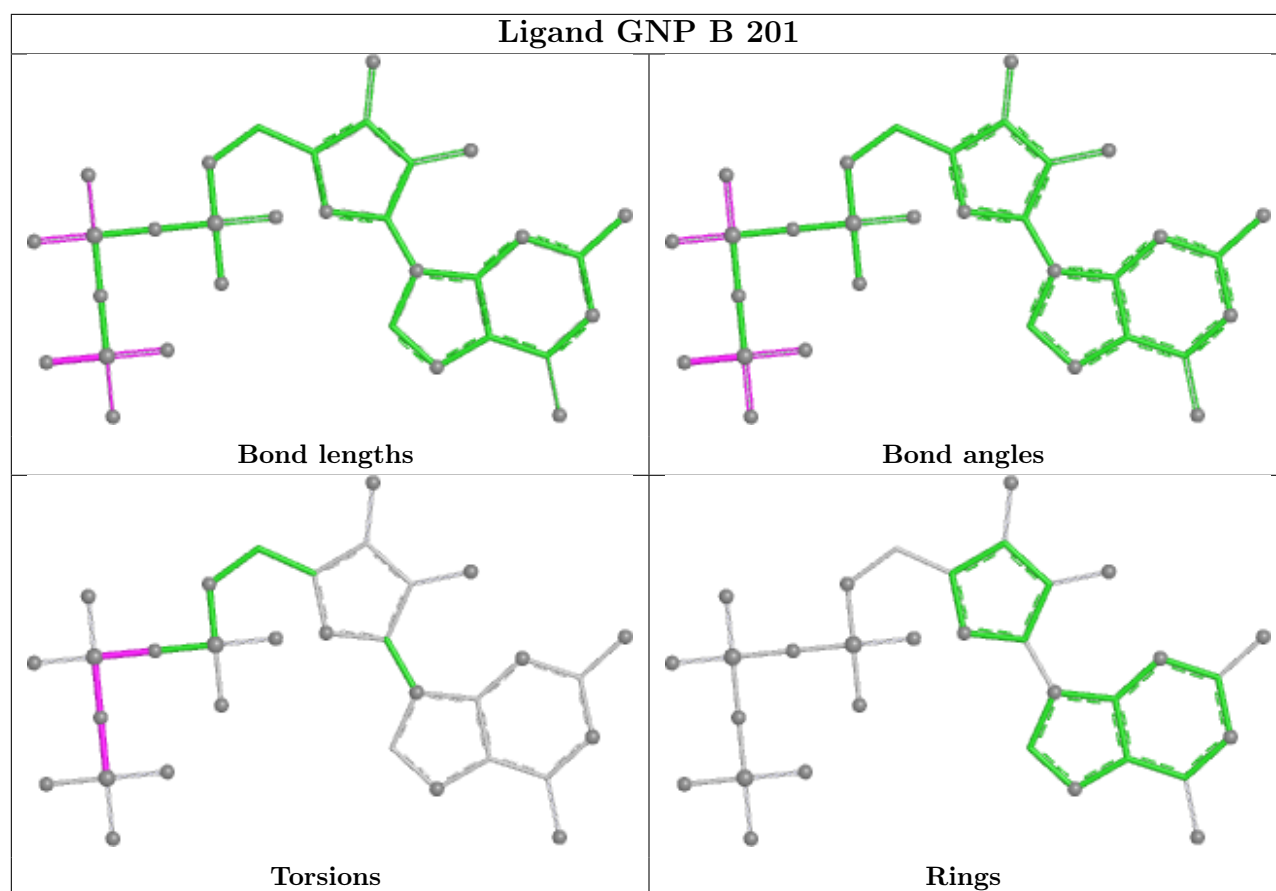
Mol	Chain	Res	Type	Atoms
5	B	201	GNP	PB-N3B-PG-O1G
5	B	201	GNP	PG-N3B-PB-O1B
5	B	201	GNP	PA-O3A-PB-O1B
5	B	201	GNP	PA-O3A-PB-O2B
5	B	201	GNP	PG-N3B-PB-O3A

There are no ring outliers.

No monomer is involved in short contacts.

The following is a two-dimensional graphical depiction of Mogul quality analysis of bond lengths, bond angles, torsion angles, and ring geometry for all instances of the Ligand of Interest. In addition, ligands with molecular weight > 250 and outliers as shown on the validation Tables will also be included. For torsion angles, if less than 5% of the Mogul distribution of torsion angles is within 10 degrees of the torsion angle in question, then that torsion angle is considered an outlier. Any bond that is central to one or more torsion angles identified as an outlier by Mogul will be highlighted in the graph. For rings, the root-mean-square deviation (RMSD) between the ring in question and similar rings identified by Mogul is calculated over all ring torsion angles. If the average RMSD is greater than 60 degrees and the minimal RMSD between the ring in question and any Mogul-identified rings is also greater than 60 degrees, then that ring is considered an outlier. The outliers are highlighted in purple. The color gray indicates Mogul did not find sufficient equivalents in the CSD to analyse the geometry.





5.7 Other polymers [i](#)

There are no such residues in this entry.

5.8 Polymer linkage issues [i](#)

There are no chain breaks in this entry.

6 Fit of model and data

6.1 Protein, DNA and RNA chains

In the following table, the column labelled ‘#RSRZ> 2’ contains the number (and percentage) of RSRZ outliers, followed by percent RSRZ outliers for the chain as percentile scores relative to all X-ray entries and entries of similar resolution. The OWAB column contains the minimum, median, 95th percentile and maximum values of the occupancy-weighted average B-factor per residue. The column labelled ‘Q< 0.9’ lists the number of (and percentage) of residues with an average occupancy less than 0.9.

Mol	Chain	Analysed	<RSRZ>	#RSRZ>2	OWAB(Å ²)	Q<0.9
1	A	310/322 (96%)	0.79	31 (10%) 12 12	20, 49, 91, 105	2 (0%)
2	B	164/167 (98%)	0.69	10 (6%) 27 29	31, 48, 68, 78	2 (1%)
All	All	474/489 (96%)	0.75	41 (8%) 16 16	20, 49, 85, 105	4 (0%)

All (41) RSRZ outliers are listed below:

Mol	Chain	Res	Type	RSRZ
1	A	417	LYS	7.6
2	B	66	ALA	5.2
1	A	499	PRO	4.8
1	A	418	PRO	4.6
2	B	62	GLU	4.1
2	B	118	CYS	4.1
1	A	652	ASN	3.8
1	A	684	GLY	3.5
1	A	702	MET	3.2
1	A	500	GLN	3.1
1	A	693	THR	3.0
1	A	700	HIS	2.9
2	B	32	TYR	2.9
1	A	706	MET	2.8
1	A	729	LEU	2.8
2	B	86	ALA	2.7
2	B	61	THR	2.7
1	A	456	GLU	2.7
2	B	117	LYS	2.7
1	A	497	LEU	2.7
1	A	454	SER	2.6
1	A	647	LYS	2.5
1	A	678	LEU	2.5
1	A	691	GLY	2.5

Continued on next page...

Continued from previous page...

Mol	Chain	Res	Type	RSRZ
1	A	592	SER	2.5
1	A	457	THR	2.5
1	A	694	ASP	2.3
1	A	683	TYR	2.3
2	B	48	ALA	2.3
1	A	730	MET	2.2
1	A	453	LEU	2.2
1	A	688	TRP	2.1
1	A	679	ILE	2.1
1	A	653	HIS	2.1
1	A	575	PHE	2.1
1	A	455	GLN	2.1
1	A	581	LEU	2.1
2	B	134	LEU	2.1
1	A	597	TRP	2.0
1	A	695	THR	2.0
2	B	125	VAL	2.0

6.2 Non-standard residues in protein, DNA, RNA chains [i](#)

There are no non-standard protein/DNA/RNA residues in this entry.

6.3 Carbohydrates [i](#)

There are no oligosaccharides in this entry.

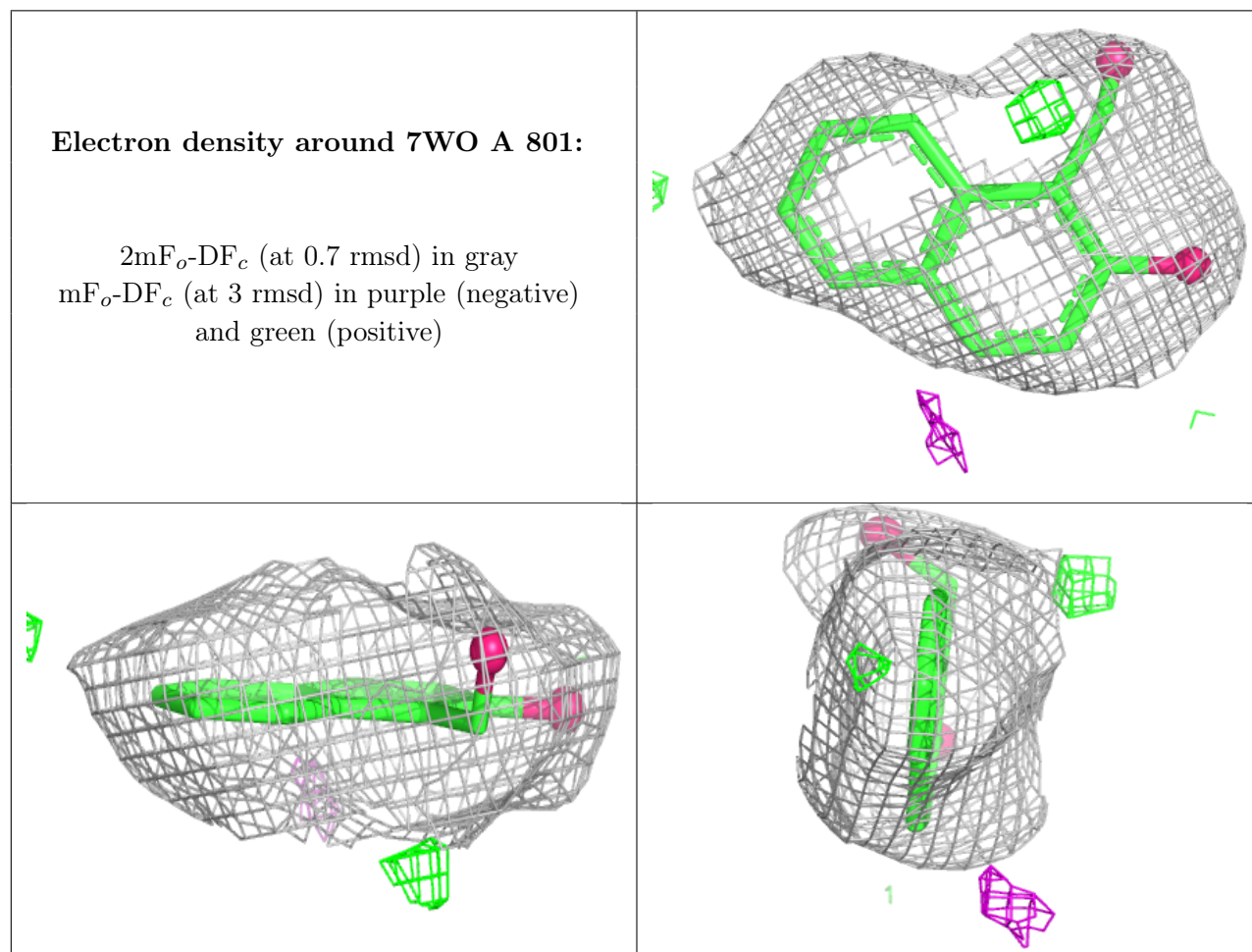
6.4 Ligands [i](#)

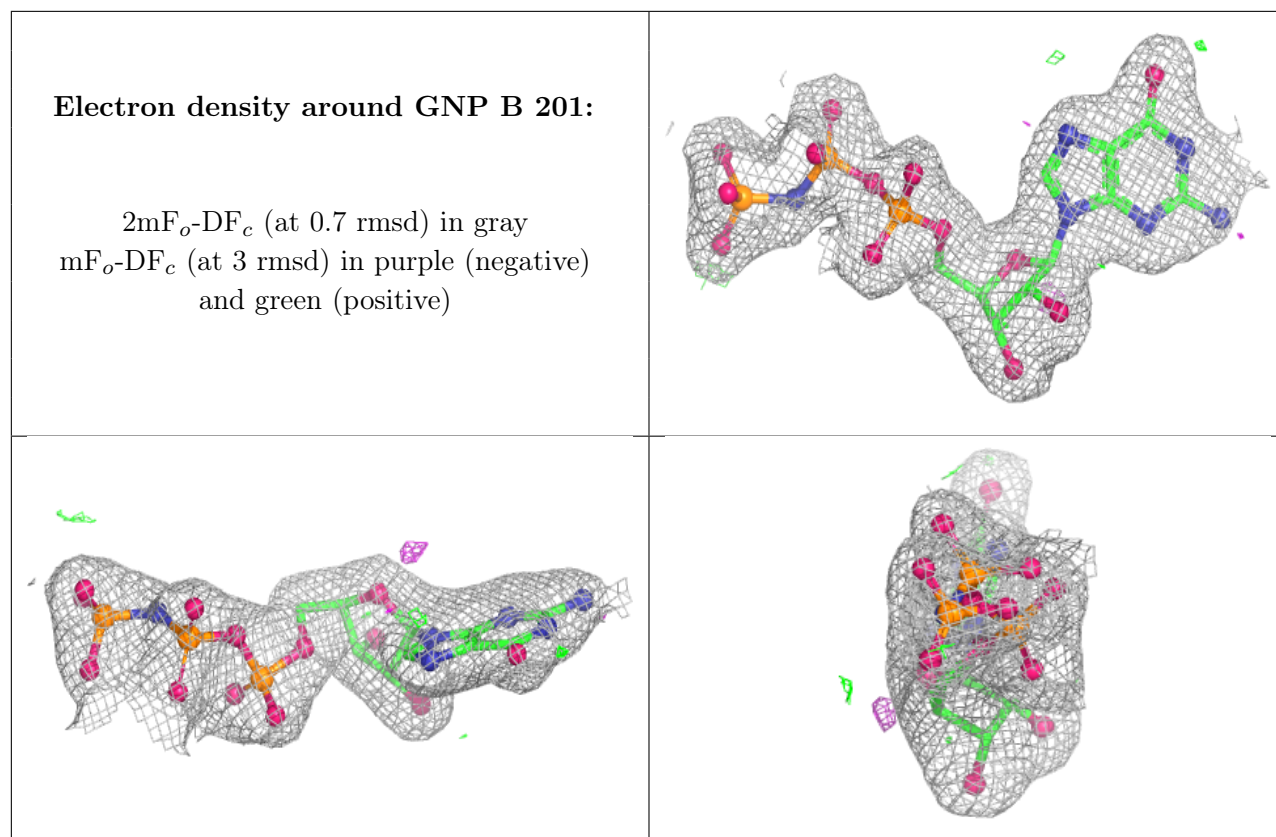
In the following table, the Atoms column lists the number of modelled atoms in the group and the number defined in the chemical component dictionary. The B-factors column lists the minimum, median, 95th percentile and maximum values of B factors of atoms in the group. The column labelled 'Q< 0.9' lists the number of atoms with occupancy less than 0.9.

Mol	Type	Chain	Res	Atoms	RSCC	RSR	B-factors(Å ²)	Q<0.9
3	7WO	A	801	13/13	0.83	0.12	76,80,82,83	0
5	GNP	B	201	32/32	0.97	0.07	33,38,43,45	0
4	MG	B	200	1/1	0.98	0.04	37,37,37,37	0

The following is a graphical depiction of the model fit to experimental electron density of all instances of the Ligand of Interest. In addition, ligands with molecular weight > 250 and outliers

as shown on the geometry validation Tables will also be included. Each fit is shown from different orientation to approximate a three-dimensional view.





6.5 Other polymers [i](#)

There are no such residues in this entry.