



# Full wwPDB X-ray Structure Validation Report ⓘ

Mar 4, 2026 – 10:06 PM UTC

PDB ID : 6O9B / pdb\_00006o9b  
Title : Crystal structure of HLA-A3\*01 in complex with a wild-type beta-catenin peptide  
Authors : Miller, M.S.; Gabelli, S.B.  
Deposited on : 2019-03-13  
Resolution : 2.20 Å(reported)

This is a Full wwPDB X-ray Structure Validation Report for a publicly released PDB entry.

We welcome your comments at [validation@mail.wwpdb.org](mailto:validation@mail.wwpdb.org)

A user guide is available at

<https://www.wwpdb.org/validation/2017/XrayValidationReportHelp>

with specific help available everywhere you see the ⓘ symbol.

The types of validation reports are described at

<http://www.wwpdb.org/validation/2017/FAQs#types>.

---

The following versions of software and data (see [references ⓘ](#)) were used in the production of this report:

MolProbity : 4-5-2 with Phenix2.0  
Mogul : 2022.3.0, CSD as543be (2022)  
Xtriage (Phenix) : 2.0  
EDS : 3.0  
Percentile statistics : 20250101.v01 (using entries in the PDB archive January 1st 2025)  
CCP4 : 9.0.010 (Gargrove)  
Density-Fitness : 1.0.12  
Ideal geometry (proteins) : Engh & Huber (2001)  
Ideal geometry (DNA, RNA) : Parkinson et al. (1996)  
Validation Pipeline (wwPDB-VP) : 2.49

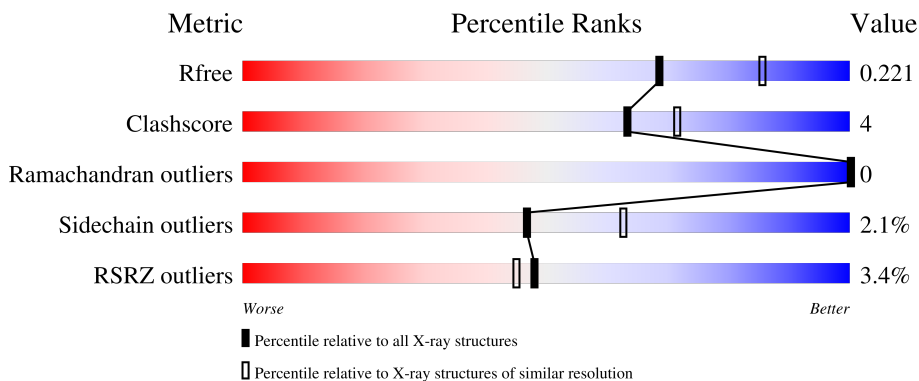
# 1 Overall quality at a glance

The following experimental techniques were used to determine the structure:

*X-RAY DIFFRACTION*

The reported resolution of this entry is 2.20 Å.

Percentile scores (ranging between 0-100) for global validation metrics of the entry are shown in the following graphic. The table shows the number of entries on which the scores are based.



Metric	Whole archive (#Entries)	Similar resolution (#Entries, resolution range(Å))
$R_{free}$	180053	6164 (2.20-2.20)
Clashscore	190562	6851 (2.20-2.20)
Ramachandran outliers	187476	6768 (2.20-2.20)
Sidechain outliers	187428	6769 (2.20-2.20)
RSRZ outliers	180081	6166 (2.20-2.20)

The table below summarises the geometric issues observed across the polymeric chains and their fit to the electron density. The red, orange, yellow and green segments of the lower bar indicate the fraction of residues that contain outliers for  $\geq 3$ , 2, 1 and 0 types of geometric quality criteria respectively. A grey segment represents the fraction of residues that are not modelled. The numeric value for each fraction is indicated below the corresponding segment, with a dot representing fractions  $\leq 5\%$ . The upper red bar (where present) indicates the fraction of residues that have poor fit to the electron density. The numeric value is given above the bar.

Mol	Chain	Length	Quality of chain
1	A	300	 3% 81% 12% 7%
2	B	119	 3% 74% 9% 15%
3	C	9	 100%

## 2 Entry composition

There are 9 unique types of molecules in this entry. The entry contains 3479 atoms, of which 10 are hydrogens and 0 are deuteriums.

In the tables below, the ZeroOcc column contains the number of atoms modelled with zero occupancy, the AltConf column contains the number of residues with at least one atom in alternate conformation and the Trace column contains the number of residues modelled with at most 2 atoms.

- Molecule 1 is a protein called HLA class I histocompatibility antigen, A-3 alpha chain.

Mol	Chain	Residues	Atoms					ZeroOcc	AltConf	Trace
			Total	C	N	O	S			
1	A	278	2265	1408	410	438	9	0	1	0

There are 20 discrepancies between the modelled and reference sequences:

Chain	Residue	Modelled	Actual	Comment	Reference
A	-2	MET	-	cloning artifact	UNP P04439
A	-1	ALA	-	cloning artifact	UNP P04439
A	0	SER	-	cloning artifact	UNP P04439
A	281	GLY	-	expression tag	UNP P04439
A	282	SER	-	expression tag	UNP P04439
A	283	LEU	-	expression tag	UNP P04439
A	284	HIS	-	expression tag	UNP P04439
A	285	HIS	-	expression tag	UNP P04439
A	286	ILE	-	expression tag	UNP P04439
A	287	LEU	-	expression tag	UNP P04439
A	288	ASP	-	expression tag	UNP P04439
A	289	ALA	-	expression tag	UNP P04439
A	290	GLN	-	expression tag	UNP P04439
A	291	LYS	-	expression tag	UNP P04439
A	292	MET	-	expression tag	UNP P04439
A	293	VAL	-	expression tag	UNP P04439
A	294	TRP	-	expression tag	UNP P04439
A	295	ASN	-	expression tag	UNP P04439
A	296	HIS	-	expression tag	UNP P04439
A	297	ARG	-	expression tag	UNP P04439

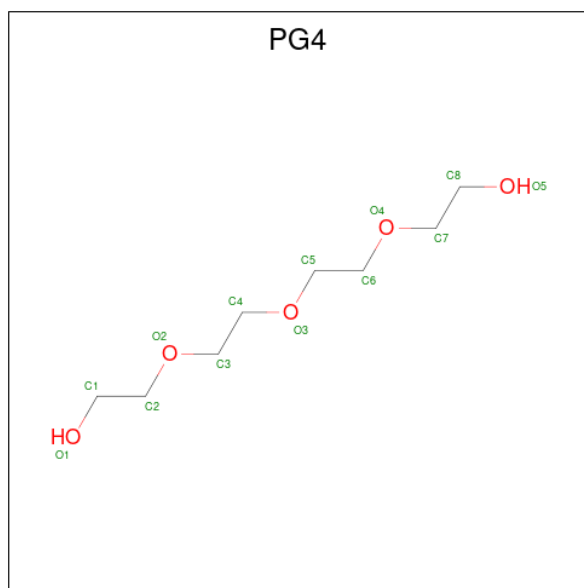
- Molecule 2 is a protein called Beta-2-microglobulin.

Mol	Chain	Residues	Atoms					ZeroOcc	AltConf	Trace
			Total	C	N	O	S			
2	B	101	850	541	145	161	3	0	1	0

- Molecule 3 is a protein called Catenin beta-1.

Mol	Chain	Residues	Atoms				ZeroOcc	AltConf	Trace
			Total	C	N	O			
3	C	9	60	36	10	14	0	0	0

- Molecule 4 is TETRAETHYLENE GLYCOL (CCD ID: PG4) (formula: C<sub>8</sub>H<sub>18</sub>O<sub>5</sub>).



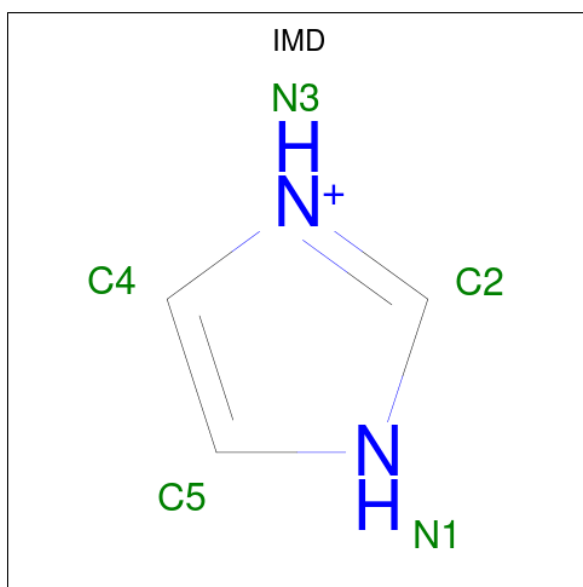
Mol	Chain	Residues	Atoms			ZeroOcc	AltConf
			Total	C	O		
4	A	1	13	8	5	0	0
4	B	1	13	8	5	0	0

- Molecule 5 is 2-(N-MORPHOLINO)-ETHANESULFONIC ACID (CCD ID: MES) (formula: C<sub>6</sub>H<sub>13</sub>NO<sub>4</sub>S).



Mol	Chain	Residues	Atoms					ZeroOcc	AltConf
			Total	C	N	O	S		
5	A	1	Total	C	N	O	S	0	0
			12	6	1	4	1		
5	B	1	Total	C	N	O	S	0	0
			12	6	1	4	1		
5	B	1	Total	C	N	O	S	0	0
			12	6	1	4	1		

- Molecule 6 is IMIDAZOLE (CCD ID: IMD) (formula: C<sub>3</sub>H<sub>5</sub>N<sub>2</sub>).



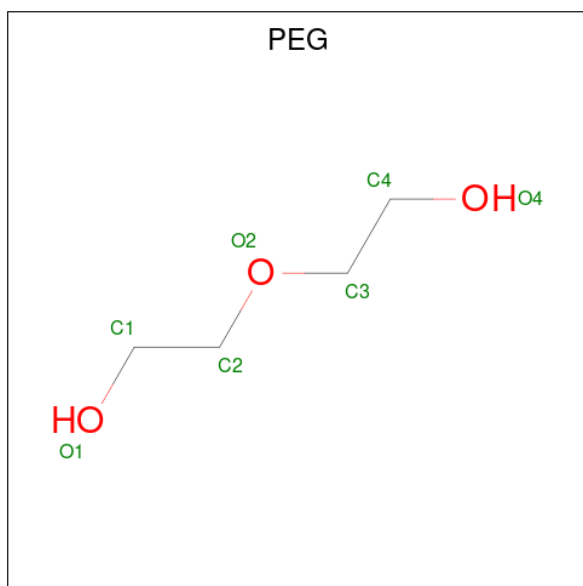
Mol	Chain	Residues	Atoms			ZeroOcc	AltConf
			Total	C	N		
6	A	1	Total	C	N	0	0
			5	3	2		

Continued on next page...

Continued from previous page...

Mol	Chain	Residues	Atoms			ZeroOcc	AltConf
			Total	C	N		
6	A	1	5	3	2	0	0

- Molecule 7 is DI(HYDROXYETHYL)ETHER (CCD ID: PEG) (formula:  $C_4H_{10}O_3$ ).



Mol	Chain	Residues	Atoms				ZeroOcc	AltConf
			Total	C	O			
7	A	1	7	4	3	0	0	
7	A	1	7	4	3	0	0	
7	B	1	7	4	3	0	0	
7	B	1	17	4	10	3	0	0

- Molecule 8 is 1,2-ETHANEDIOL (CCD ID: EDO) (formula:  $C_2H_6O_2$ ).



Mol	Chain	Residues	Atoms	ZeroOcc	AltConf
8	A	1	Total C O 4 2 2	0	0
8	A	1	Total C O 4 2 2	0	0
8	A	1	Total C O 4 2 2	0	0
8	A	1	Total C O 4 2 2	0	0
8	B	1	Total C O 4 2 2	0	0
8	B	1	Total C O 4 2 2	0	0
8	B	1	Total C O 4 2 2	0	0

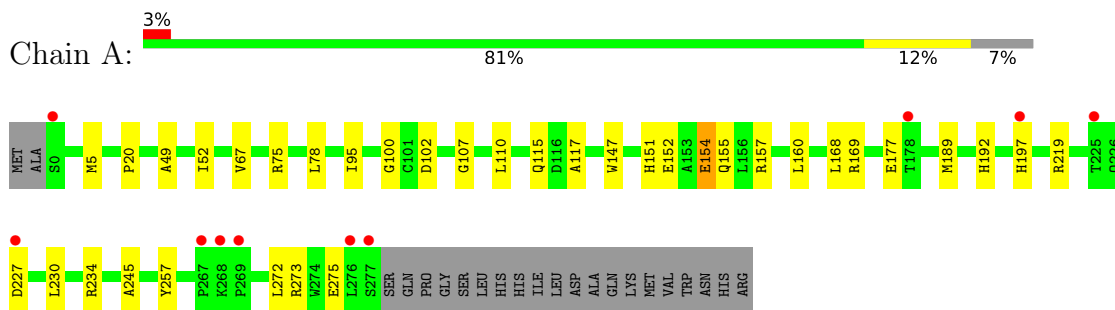
- Molecule 9 is water.

Mol	Chain	Residues	Atoms	ZeroOcc	AltConf
9	A	117	Total O 117 117	0	0
9	B	43	Total O 43 43	0	0
9	C	6	Total O 6 6	0	0

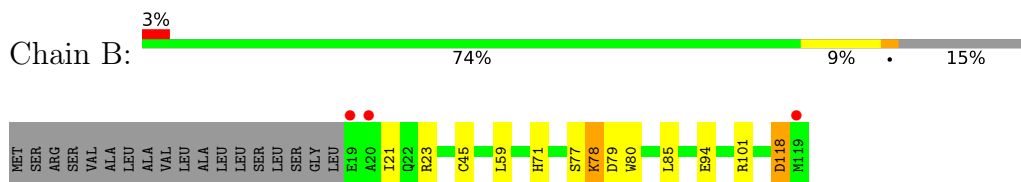
### 3 Residue-property plots [i](#)

These plots are drawn for all protein, RNA, DNA and oligosaccharide chains in the entry. The first graphic for a chain summarises the proportions of the various outlier classes displayed in the second graphic. The second graphic shows the sequence view annotated by issues in geometry and electron density. Residues are color-coded according to the number of geometric quality criteria for which they contain at least one outlier: green = 0, yellow = 1, orange = 2 and red = 3 or more. A red dot above a residue indicates a poor fit to the electron density ( $RSRZ > 2$ ). Stretches of 2 or more consecutive residues without any outlier are shown as a green connector. Residues present in the sample, but not in the model, are shown in grey.

- Molecule 1: HLA class I histocompatibility antigen, A-3 alpha chain



- Molecule 2: Beta-2-microglobulin



- Molecule 3: Catenin beta-1



There are no outlier residues recorded for this chain.

## 4 Data and refinement statistics

Property	Value	Source
Space group	P 6 2 2	Depositor
Cell constants a, b, c, $\alpha$ , $\beta$ , $\gamma$	152.77Å 152.77Å 84.83Å 90.00° 90.00° 120.00°	Depositor
Resolution (Å)	28.87 – 2.20 28.87 – 2.20	Depositor EDS
% Data completeness (in resolution range)	99.2 (28.87-2.20) 99.5 (28.87-2.20)	Depositor EDS
$R_{merge}$	0.16	Depositor
$R_{sym}$	(Not available)	Depositor
$\langle I/\sigma(I) \rangle$ <sup>1</sup>	1.75 (at 2.20Å)	Xtrriage
Refinement program	REFMAC	Depositor
R, $R_{free}$	0.182 , 0.227 (Not available) , 0.221	Depositor DCC
$R_{free}$ test set	1452 reflections (4.80%)	wwPDB-VP
Wilson B-factor (Å <sup>2</sup> )	36.2	Xtrriage
Anisotropy	0.051	Xtrriage
Bulk solvent $k_{sol}$ (e/Å <sup>3</sup> ), $B_{sol}$ (Å <sup>2</sup> )	0.34 , 30.4	EDS
L-test for twinning <sup>2</sup>	$\langle  L  \rangle = 0.50$ , $\langle L^2 \rangle = 0.34$	Xtrriage
Estimated twinning fraction	No twinning to report.	Xtrriage
$F_o, F_c$ correlation	0.96	EDS
Total number of atoms	3479	wwPDB-VP
Average B, all atoms (Å <sup>2</sup> )	40.0	wwPDB-VP

Xtrriage's analysis on translational NCS is as follows: *The largest off-origin peak in the Patterson function is 4.56% of the height of the origin peak. No significant pseudotranslation is detected.*

<sup>1</sup>Intensities estimated from amplitudes.

<sup>2</sup>Theoretical values of  $\langle |L| \rangle$ ,  $\langle L^2 \rangle$  for acentric reflections are 0.5, 0.333 respectively for untwinned datasets, and 0.375, 0.2 for perfectly twinned datasets.

## 5 Model quality [i](#)

### 5.1 Standard geometry [i](#)

Bond lengths and bond angles in the following residue types are not validated in this section: PEG, IMD, EDO, PG4, MES

The Z score for a bond length (or angle) is the number of standard deviations the observed value is removed from the expected value. A bond length (or angle) with  $|Z| > 5$  is considered an outlier worth inspection. RMSZ is the root-mean-square of all Z scores of the bond lengths (or angles).

Mol	Chain	Bond lengths		Bond angles	
		RMSZ	# $ Z  > 5$	RMSZ	# $ Z  > 5$
1	A	1.23	7/2328 (0.3%)	1.20	3/3159 (0.1%)
2	B	1.21	1/876 (0.1%)	1.19	0/1185
3	C	1.47	0/60	1.13	0/79
All	All	1.23	8/3264 (0.2%)	1.20	3/4423 (0.1%)

All (8) bond length outliers are listed below:

Mol	Chain	Res	Type	Atoms	Z	Observed(Å)	Ideal(Å)
1	A	197	HIS	CE1-NE2	6.57	1.39	1.32
1	A	155	GLN	C-O	-6.34	1.16	1.24
1	A	102	ASP	C-O	6.30	1.31	1.24
1	A	168	LEU	C-O	6.28	1.31	1.24
2	B	94	GLU	C-O	-6.06	1.17	1.24
1	A	275	GLU	C-O	5.76	1.30	1.24
1	A	95	ILE	C-O	-5.19	1.18	1.24
1	A	160	LEU	C-O	5.08	1.30	1.24

All (3) bond angle outliers are listed below:

Mol	Chain	Res	Type	Atoms	Z	Observed(°)	Ideal(°)
1	A	78	LEU	N-CA-C	-5.45	105.42	111.36
1	A	234	ARG	CA-C-N	5.32	125.73	119.99
1	A	234	ARG	C-N-CA	5.32	125.73	119.99

There are no chirality outliers.

There are no planarity outliers.

## 5.2 Too-close contacts

In the following table, the Non-H and H(model) columns list the number of non-hydrogen atoms and hydrogen atoms in the chain respectively. The H(added) column lists the number of hydrogen atoms added and optimized by MolProbity. The Clashes column lists the number of clashes within the asymmetric unit, whereas Symm-Clashes lists symmetry-related clashes.

Mol	Chain	Non-H	H(model)	H(added)	Clashes	Symm-Clashes
1	A	2265	0	2120	16	0
2	B	850	0	815	13	0
3	C	60	0	65	0	0
4	A	13	0	18	0	0
4	B	13	0	18	1	0
5	A	12	0	13	0	0
5	B	24	0	26	2	0
6	A	10	0	10	0	0
7	A	14	0	20	0	0
7	B	14	10	20	0	0
8	A	16	0	24	0	0
8	B	12	0	18	2	0
9	A	117	0	0	1	0
9	B	43	0	0	0	0
9	C	6	0	0	0	0
All	All	3469	10	3167	26	0

The all-atom clashscore is defined as the number of clashes found per 1000 atoms (including hydrogen atoms). The all-atom clashscore for this structure is 4.

All (26) close contacts within the same asymmetric unit are listed below, sorted by their clash magnitude.

Atom-1	Atom-2	Interatomic distance (Å)	Clash overlap (Å)
2:B:77:SER:HB3	5:B:203:MES:H32	1.70	0.74
2:B:101:ARG:HE	8:B:206:EDO:H12	1.61	0.66
2:B:21:ILE:HD13	2:B:23[B]:ARG:HE	1.63	0.63
1:A:192:HIS:CE1	2:B:118:ASP:HB3	2.40	0.57
1:A:230:LEU:HD23	1:A:245:ALA:HB2	1.87	0.55
1:A:219:ARG:HD3	1:A:257:TYR:CZ	2.44	0.53
2:B:21:ILE:CD1	2:B:23[B]:ARG:HE	2.22	0.53
2:B:21:ILE:HD13	2:B:23[A]:ARG:HD2	1.94	0.50
1:A:117:ALA:HB2	2:B:80:TRP:CE2	2.49	0.48
1:A:20:PRO:HD2	1:A:75:ARG:HD2	1.97	0.47
1:A:147:TRP:CD1	1:A:152:GLU:HG3	2.49	0.47
1:A:189:MET:HE2	1:A:272:LEU:HB3	1.95	0.47

*Continued on next page...*

Continued from previous page...

Atom-1	Atom-2	Interatomic distance (Å)	Clash overlap (Å)
1:A:20:PRO:CD	1:A:75:ARG:HD2	2.45	0.46
2:B:79:ASP:CG	5:B:203:MES:H22	2.41	0.45
2:B:78:LYS:HE3	4:B:201:PG4:O5	2.17	0.45
1:A:157[B]:ARG:HD2	9:A:431:HOH:O	2.18	0.43
2:B:101:ARG:HE	8:B:206:EDO:C1	2.29	0.43
1:A:151:HIS:O	1:A:154:GLU:HG2	2.19	0.43
1:A:107:GLY:O	1:A:169:ARG:HD3	2.19	0.42
1:A:227:ASP:O	1:A:227:ASP:CG	2.62	0.42
1:A:49:ALA:O	1:A:52:ILE:HG22	2.20	0.42
1:A:117:ALA:HB2	2:B:80:TRP:CD2	2.55	0.41
1:A:5:MET:O	1:A:100:GLY:HA3	2.21	0.41
1:A:189:MET:HE1	1:A:273:ARG:N	2.35	0.41
2:B:45:CYS:HB2	2:B:59:LEU:HD21	2.03	0.40
2:B:71:HIS:HA	2:B:85:LEU:O	2.21	0.40

There are no symmetry-related clashes.

## 5.3 Torsion angles [i](#)

### 5.3.1 Protein backbone [i](#)

In the following table, the Percentiles column shows the percent Ramachandran outliers of the chain as a percentile score with respect to all X-ray entries followed by that with respect to entries of similar resolution.

The Analysed column shows the number of residues for which the backbone conformation was analysed, and the total number of residues.

Mol	Chain	Analysed	Favoured	Allowed	Outliers	Percentiles	
1	A	277/300 (92%)	271 (98%)	6 (2%)	0	100	100
2	B	100/119 (84%)	97 (97%)	3 (3%)	0	100	100
3	C	7/9 (78%)	7 (100%)	0	0	100	100
All	All	384/428 (90%)	375 (98%)	9 (2%)	0	100	100

There are no Ramachandran outliers to report.

### 5.3.2 Protein sidechains [i](#)

In the following table, the Percentiles column shows the percent sidechain outliers of the chain as a percentile score with respect to all X-ray entries followed by that with respect to entries of similar resolution.

The Analysed column shows the number of residues for which the sidechain conformation was analysed, and the total number of residues.

Mol	Chain	Analysed	Rotameric	Outliers	Percentiles	
1	A	236/254 (93%)	231 (98%)	5 (2%)	47	63
2	B	96/109 (88%)	94 (98%)	2 (2%)	47	63
3	C	7/7 (100%)	7 (100%)	0	100	100
All	All	339/370 (92%)	332 (98%)	7 (2%)	47	63

All (7) residues with a non-rotameric sidechain are listed below:

Mol	Chain	Res	Type
1	A	67	VAL
1	A	110	LEU
1	A	115	GLN
1	A	154	GLU
1	A	177	GLU
2	B	78	LYS
2	B	118	ASP

Sometimes sidechains can be flipped to improve hydrogen bonding and reduce clashes. All (4) such sidechains are listed below:

Mol	Chain	Res	Type
1	A	127	ASN
1	A	224	GLN
2	B	28	GLN
2	B	33	HIS

### 5.3.3 RNA [i](#)

There are no RNA molecules in this entry.

## 5.4 Non-standard residues in protein, DNA, RNA chains [i](#)

There are no non-standard protein/DNA/RNA residues in this entry.

## 5.5 Carbohydrates [i](#)

There are no oligosaccharides in this entry.

## 5.6 Ligand geometry [i](#)

18 ligands are modelled in this entry.

In the following table, the Counts columns list the number of bonds (or angles) for which Mogul statistics could be retrieved, the number of bonds (or angles) that are observed in the model and the number of bonds (or angles) that are defined in the Chemical Component Dictionary. The Link column lists molecule types, if any, to which the group is linked. The Z score for a bond length (or angle) is the number of standard deviations the observed value is removed from the expected value. A bond length (or angle) with  $|Z| > 2$  is considered an outlier worth inspection. RMSZ is the root-mean-square of all Z scores of the bond lengths (or angles).

Mol	Type	Chain	Res	Link	Bond lengths			Bond angles		
					Counts	RMSZ	# Z  > 2	Counts	RMSZ	# Z  > 2
7	PEG	A	306	-	6,6,6	0.19	0	5,5,5	0.38	0
8	EDO	B	206	-	3,3,3	0.40	0	2,2,2	0.48	0
5	MES	B	203	-	12,12,12	0.72	0	15,16,16	0.35	0
7	PEG	A	305	-	6,6,6	0.51	0	5,5,5	0.56	0
8	EDO	B	207	-	3,3,3	0.42	0	2,2,2	0.45	0
8	EDO	A	310	-	3,3,3	0.15	0	2,2,2	0.48	0
4	PG4	A	301	-	12,12,12	0.24	0	11,11,11	0.48	0
5	MES	A	302	-	12,12,12	0.71	0	15,16,16	0.29	0
7	PEG	B	204	-	6,6,6	0.29	0	5,5,5	0.19	0
7	PEG	B	205	-	6,6,6	0.11	0	5,5,5	0.12	0
8	EDO	A	307	-	3,3,3	0.43	0	2,2,2	0.24	0
6	IMD	A	304	-	5,5,5	0.47	0	5,5,5	0.48	0
8	EDO	A	308	-	3,3,3	0.67	0	2,2,2	0.51	0
8	EDO	A	309	-	3,3,3	0.35	0	2,2,2	0.22	0
8	EDO	B	208	-	3,3,3	0.20	0	2,2,2	0.53	0
4	PG4	B	201	-	12,12,12	0.73	0	11,11,11	0.78	0
6	IMD	A	303	-	5,5,5	0.38	0	5,5,5	0.47	0
5	MES	B	202	-	12,12,12	0.70	0	15,16,16	0.29	0

In the following table, the Chirals column lists the number of chiral outliers, the number of chiral centers analysed, the number of these observed in the model and the number defined in the Chemical Component Dictionary. Similar counts are reported in the Torsion and Rings columns. '2' means no outliers of that kind were identified.

Mol	Type	Chain	Res	Link	Chirals	Torsions	Rings
7	PEG	A	306	-	-	2/4/4/4	-
8	EDO	B	206	-	-	1/1/1/1	-

*Continued on next page...*

*Continued from previous page...*

Mol	Type	Chain	Res	Link	Chirals	Torsions	Rings
6	IMD	A	303	-	-	-	0/1/1/1
5	MES	B	203	-	-	5/6/14/14	0/1/1/1
7	PEG	A	305	-	-	2/4/4/4	-
8	EDO	B	207	-	-	1/1/1/1	-
8	EDO	A	310	-	-	1/1/1/1	-
4	PG4	A	301	-	-	3/10/10/10	-
5	MES	A	302	-	-	0/6/14/14	0/1/1/1
7	PEG	B	204	-	-	0/4/4/4	-
7	PEG	B	205	-	-	1/4/4/4	-
8	EDO	A	307	-	-	1/1/1/1	-
8	EDO	A	308	-	-	1/1/1/1	-
8	EDO	B	208	-	-	1/1/1/1	-
6	IMD	A	304	-	-	-	0/1/1/1
4	PG4	B	201	-	-	4/10/10/10	-
8	EDO	A	309	-	-	1/1/1/1	-
5	MES	B	202	-	-	0/6/14/14	0/1/1/1

There are no bond length outliers.

There are no bond angle outliers.

There are no chirality outliers.

All (24) torsion outliers are listed below:

Mol	Chain	Res	Type	Atoms
5	B	203	MES	C7-C8-S-O1S
5	B	203	MES	C7-C8-S-O2S
4	B	201	PG4	O2-C3-C4-O3
4	A	301	PG4	O3-C5-C6-O4
7	A	305	PEG	O2-C3-C4-O4
4	B	201	PG4	O1-C1-C2-O2
8	A	310	EDO	O1-C1-C2-O2
7	A	306	PEG	O1-C1-C2-O2
7	A	306	PEG	O2-C3-C4-O4
8	A	307	EDO	O1-C1-C2-O2
8	A	308	EDO	O1-C1-C2-O2
4	B	201	PG4	O3-C5-C6-O4
5	B	203	MES	C7-C8-S-O3S
8	B	207	EDO	O1-C1-C2-O2
4	B	201	PG4	C4-C3-O2-C2
8	A	309	EDO	O1-C1-C2-O2
4	A	301	PG4	C4-C3-O2-C2

*Continued on next page...*

*Continued from previous page...*

Mol	Chain	Res	Type	Atoms
5	B	203	MES	C8-C7-N4-C5
8	B	206	EDO	O1-C1-C2-O2
4	A	301	PG4	C6-C5-O3-C4
5	B	203	MES	C8-C7-N4-C3
7	A	305	PEG	C1-C2-O2-C3
7	B	205	PEG	O1-C1-C2-O2
8	B	208	EDO	O1-C1-C2-O2

There are no ring outliers.

3 monomers are involved in 5 short contacts:

Mol	Chain	Res	Type	Clashes	Symm-Clashes
8	B	206	EDO	2	0
5	B	203	MES	2	0
4	B	201	PG4	1	0

## 5.7 Other polymers [i](#)

There are no such residues in this entry.

## 5.8 Polymer linkage issues [i](#)

There are no chain breaks in this entry.

## 6 Fit of model and data [i](#)

### 6.1 Protein, DNA and RNA chains [i](#)

In the following table, the column labelled ‘#RSRZ > 2’ contains the number (and percentage) of RSRZ outliers, followed by percent RSRZ outliers for the chain as percentile scores relative to all X-ray entries and entries of similar resolution. The OWAB column contains the minimum, median, 95<sup>th</sup> percentile and maximum values of the occupancy-weighted average B-factor per residue. The column labelled ‘Q < 0.9’ lists the number of (and percentage) of residues with an average occupancy less than 0.9.

Mol	Chain	Analysed	<RSRZ>	#RSRZ>2	OWAB(Å <sup>2</sup> )	Q<0.9
1	A	278/300 (92%)	-0.12	10 (3%) 46 43	16, 35, 68, 98	1 (0%)
2	B	101/119 (84%)	-0.05	3 (2%) 52 49	18, 37, 69, 89	1 (0%)
3	C	9/9 (100%)	-0.45	0 100 100	26, 31, 33, 34	0
All	All	388/428 (90%)	-0.11	13 (3%) 48 45	16, 36, 69, 98	2 (0%)

All (13) RSRZ outliers are listed below:

Mol	Chain	Res	Type	RSRZ
2	B	19	GLU	3.6
2	B	119	MET	3.4
1	A	227	ASP	3.2
2	B	20	ALA	3.2
1	A	197	HIS	2.7
1	A	268	LYS	2.6
1	A	277	SER	2.5
1	A	276	LEU	2.3
1	A	269	PRO	2.3
1	A	178	THR	2.3
1	A	225	THR	2.2
1	A	0	SER	2.2
1	A	267	PRO	2.0

### 6.2 Non-standard residues in protein, DNA, RNA chains [i](#)

There are no non-standard protein/DNA/RNA residues in this entry.

### 6.3 Carbohydrates [i](#)

There are no oligosaccharides in this entry.

## 6.4 Ligands [i](#)

In the following table, the Atoms column lists the number of modelled atoms in the group and the number defined in the chemical component dictionary. The B-factors column lists the minimum, median, 95<sup>th</sup> percentile and maximum values of B factors of atoms in the group. The column labelled 'Q< 0.9' lists the number of atoms with occupancy less than 0.9.

Mol	Type	Chain	Res	Atoms	RSCC	RSR	B-factors(Å <sup>2</sup> )	Q<0.9
8	EDO	A	310	4/4	0.74	0.20	58,60,69,74	0
8	EDO	B	207	4/4	0.75	0.26	69,72,79,83	0
7	PEG	B	205	7/7	0.78	0.31	20,20,20,20	0
8	EDO	B	208	4/4	0.78	0.15	65,66,67,69	0
7	PEG	A	305	7/7	0.79	0.22	53,58,66,66	0
8	EDO	A	307	4/4	0.80	0.20	62,65,68,68	0
6	IMD	A	304	5/5	0.80	0.25	59,61,65,68	0
8	EDO	A	308	4/4	0.85	0.14	48,53,57,63	0
5	MES	A	302	12/12	0.85	0.14	45,53,73,74	0
8	EDO	B	206	4/4	0.86	0.16	46,57,63,71	0
7	PEG	A	306	7/7	0.87	0.13	55,58,61,64	0
5	MES	B	202	12/12	0.88	0.17	45,60,66,67	0
7	PEG	B	204	7/7	0.88	0.16	59,65,69,71	0
5	MES	B	203	12/12	0.88	0.14	50,60,69,74	0
6	IMD	A	303	5/5	0.91	0.13	56,61,66,70	0
4	PG4	B	201	13/13	0.91	0.12	35,40,58,67	0
4	PG4	A	301	13/13	0.93	0.11	46,52,63,65	0
8	EDO	A	309	4/4	0.93	0.11	54,59,59,71	0

## 6.5 Other polymers [i](#)

There are no such residues in this entry.