



Full wwPDB EM Validation Report ⓘ

Oct 19, 2024 – 08:43 PM EDT

PDB ID : 6NPL
EMDB ID : EMD-0473
Title : Cryo-EM structure of NKCC1
Authors : Feng, L.; Liao, M.F.; Orlando, B.; Zhang, J.R.
Deposited on : 2019-01-17
Resolution : 2.90 Å (reported)

This is a Full wwPDB EM Validation Report for a publicly released PDB entry.

We welcome your comments at validation@mail.wwpdb.org

A user guide is available at

<https://www.wwpdb.org/validation/2017/EMValidationReportHelp>

with specific help available everywhere you see the ⓘ symbol.

The types of validation reports are described at

<http://www.wwpdb.org/validation/2017/FAQs#types>.

The following versions of software and data (see [references ⓘ](#)) were used in the production of this report:

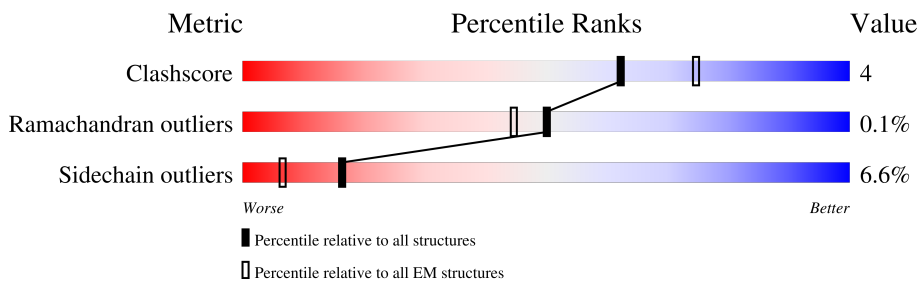
EMDB validation analysis : 0.0.1.dev113
Mogul : 2022.3.0, CSD as543be (2022)
MolProbity : 4.02b-467
buster-report : 1.1.7 (2018)
Percentile statistics : 20231227.v01 (using entries in the PDB archive December 27th 2023)
MapQ : 1.9.13
Ideal geometry (proteins) : Engh & Huber (2001)
Ideal geometry (DNA, RNA) : Parkinson et al. (1996)
Validation Pipeline (wwPDB-VP) : 2.39

1 Overall quality at a glance

The following experimental techniques were used to determine the structure:
ELECTRON MICROSCOPY

The reported resolution of this entry is 2.90 Å.

Percentile scores (ranging between 0-100) for global validation metrics of the entry are shown in the following graphic. The table shows the number of entries on which the scores are based.



Metric	Whole archive (#Entries)	EM structures (#Entries)
Clashscore	210492	15764
Ramachandran outliers	207382	16835
Sidechain outliers	206894	16415

The table below summarises the geometric issues observed across the polymeric chains and their fit to the map. The red, orange, yellow and green segments of the bar indicate the fraction of residues that contain outliers for ≥ 3 , 2, 1 and 0 types of geometric quality criteria respectively. A grey segment represents the fraction of residues that are not modelled. The numeric value for each fraction is indicated below the corresponding segment, with a dot representing fractions $\leq 5\%$. The upper red bar (where present) indicates the fraction of residues that have poor fit to the EM map (all-atom inclusion $< 40\%$). The numeric value is given above the bar.

Mol	Chain	Length	Quality of chain
1	A	914	 17% 80% 13% • 6%
1	B	914	 17% 82% 12% • 6%

2 Entry composition [i](#)

There are 4 unique types of molecules in this entry. The entry contains 13774 atoms, of which 0 are hydrogens and 0 are deuteriums.

In the tables below, the AltConf column contains the number of residues with at least one atom in alternate conformation and the Trace column contains the number of residues modelled with at most 2 atoms.

- Molecule 1 is a protein called Solute carrier family 12 (sodium/potassium/chloride transporter), member 2.

Mol	Chain	Residues	Atoms					AltConf	Trace
			Total	C	N	O	S		
1	A	861	6702	4354	1114	1196	38	0	0
1	B	861	6702	4354	1114	1196	38	0	0

There are 4 discrepancies between the modelled and reference sequences:

Chain	Residue	Modelled	Actual	Comment	Reference
A	819	ILE	THR	conflict	UNP A0A0G2KGS0
A	?	-	ALA	deletion	UNP A0A0G2KGS0
B	819	ILE	THR	conflict	UNP A0A0G2KGS0
B	?	-	ALA	deletion	UNP A0A0G2KGS0

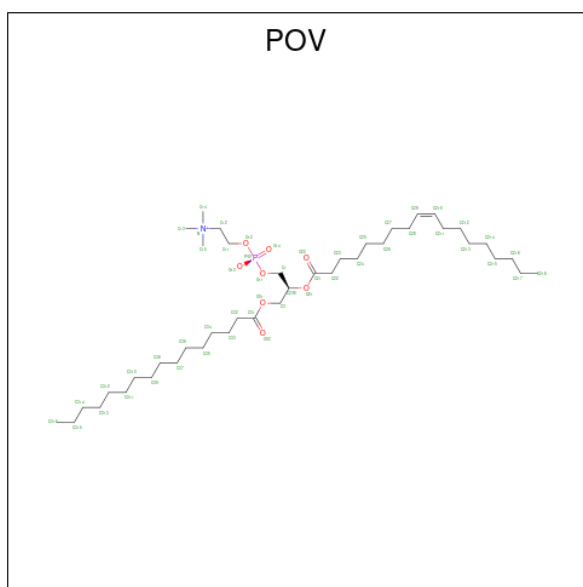
- Molecule 2 is POTASSIUM ION (three-letter code: K) (formula: K).

Mol	Chain	Residues	Atoms	AltConf
2	A	1	Total K 1 1	0
2	B	1	Total K 1 1	0

- Molecule 3 is CHLORIDE ION (three-letter code: CL) (formula: Cl).

Mol	Chain	Residues	Atoms	AltConf
3	A	2	Total Cl 2 2	0
3	B	2	Total Cl 2 2	0

- Molecule 4 is (2S)-3-(hexadecanoyloxy)-2-[(9Z)-octadec-9-enoyloxy]propyl 2-(trimethylamm onio)ethyl phosphate (three-letter code: POV) (formula: C₄₂H₈₂NO₈P).

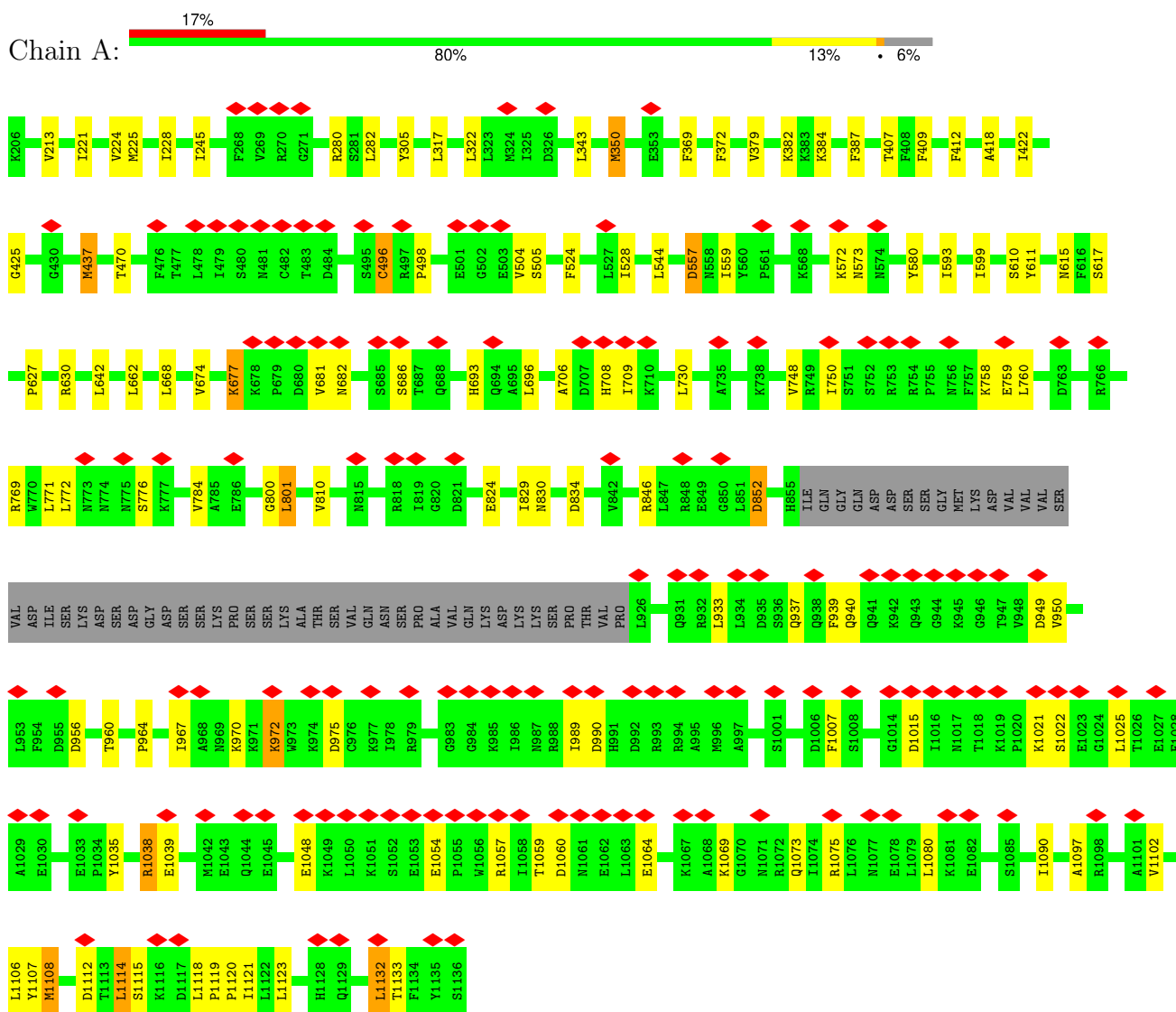


Mol	Chain	Residues	Atoms					AltConf
			Total	C	N	O	P	
4	A	1	Total 52	42	1	8	1	0
4	A	1	Total 52	42	1	8	1	0
4	A	1	Total 52	42	1	8	1	0
4	B	1	Total 52	42	1	8	1	0
4	B	1	Total 52	42	1	8	1	0
4	B	1	Total 52	42	1	8	1	0
4	B	1	Total 52	42	1	8	1	0

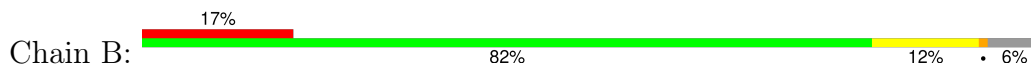
3 Residue-property plots

These plots are drawn for all protein, RNA, DNA and oligosaccharide chains in the entry. The first graphic for a chain summarises the proportions of the various outlier classes displayed in the second graphic. The second graphic shows the sequence view annotated by issues in geometry and atom inclusion in map density. Residues are color-coded according to the number of geometric quality criteria for which they contain at least one outlier: green = 0, yellow = 1, orange = 2 and red = 3 or more. A red diamond above a residue indicates a poor fit to the EM map for this residue (all-atom inclusion < 40%). Stretches of 2 or more consecutive residues without any outlier are shown as a green connector. Residues present in the sample, but not in the model, are shown in grey.

- Molecule 1: Solute carrier family 12 (sodium/potassium/chloride transporter), member 2



- Molecule 1: Solute carrier family 12 (sodium/potassium/chloride transporter), member 2



4 Experimental information

Property	Value	Source
EM reconstruction method	SINGLE PARTICLE	Depositor
Imposed symmetry	POINT, C1	Depositor
Number of particles used	63659	Depositor
Resolution determination method	FSC 0.143 CUT-OFF	Depositor
CTF correction method	PHASE FLIPPING AND AMPLITUDE CORRECTION	Depositor
Microscope	FEI TITAN KRIOS	Depositor
Voltage (kV)	300	Depositor
Electron dose ($e^-/\text{\AA}^2$)	53	Depositor
Minimum defocus (nm)	Not provided	
Maximum defocus (nm)	Not provided	
Magnification	Not provided	
Image detector	GATAN K2 QUANTUM (4k x 4k)	Depositor
Maximum map value	0.327	Depositor
Minimum map value	-0.033	Depositor
Average map value	0.003	Depositor
Map value standard deviation	0.010	Depositor
Recommended contour level	0.056	Depositor
Map size (Å)	232.09999, 232.09999, 232.09999	wwPDB
Map dimensions	220, 220, 220	wwPDB
Map angles (°)	90.0, 90.0, 90.0	wwPDB
Pixel spacing (Å)	1.055, 1.055, 1.055	Depositor

5 Model quality [i](#)

5.1 Standard geometry [i](#)

Bond lengths and bond angles in the following residue types are not validated in this section: CL, K, POV

The Z score for a bond length (or angle) is the number of standard deviations the observed value is removed from the expected value. A bond length (or angle) with $|Z| > 5$ is considered an outlier worth inspection. RMSZ is the root-mean-square of all Z scores of the bond lengths (or angles).

Mol	Chain	Bond lengths		Bond angles	
		RMSZ	# Z >5	RMSZ	# Z >5
1	A	0.33	0/6852	0.54	3/9291 (0.0%)
1	B	0.33	0/6852	0.52	1/9291 (0.0%)
All	All	0.33	0/13704	0.53	4/18582 (0.0%)

There are no bond length outliers.

All (4) bond angle outliers are listed below:

Mol	Chain	Res	Type	Atoms	Z	Observed(°)	Ideal(°)
1	A	1132	LEU	CA-CB-CG	9.85	137.95	115.30
1	B	999	LEU	CA-CB-CG	6.24	129.66	115.30
1	A	437	MET	CA-CB-CG	5.57	122.78	113.30
1	A	1132	LEU	CB-CG-CD1	5.47	120.31	111.00

There are no chirality outliers.

There are no planarity outliers.

5.2 Too-close contacts [i](#)

In the following table, the Non-H and H(model) columns list the number of non-hydrogen atoms and hydrogen atoms in the chain respectively. The H(added) column lists the number of hydrogen atoms added and optimized by MolProbity. The Clashes column lists the number of clashes within the asymmetric unit, whereas Symm-Clashes lists symmetry-related clashes.

Mol	Chain	Non-H	H(model)	H(added)	Clashes	Symm-Clashes
1	A	6702	0	6797	57	0
1	B	6702	0	6797	49	0
2	A	1	0	0	0	0
2	B	1	0	0	0	0
3	A	2	0	0	1	0

Continued on next page...

Continued from previous page...

Mol	Chain	Non-H	H(model)	H(added)	Clashes	Symm-Clashes
3	B	2	0	0	1	0
4	A	156	0	246	3	0
4	B	208	0	328	9	0
All	All	13774	0	14168	115	0

The all-atom clashscore is defined as the number of clashes found per 1000 atoms (including hydrogen atoms). The all-atom clashscore for this structure is 4.

All (115) close contacts within the same asymmetric unit are listed below, sorted by their clash magnitude.

Atom-1	Atom-2	Interatomic distance (Å)	Clash overlap (Å)
1:A:1080:LEU:HD11	1:A:1090:ILE:HG21	1.83	0.61
4:B:1206:POV:H214	4:B:1206:POV:H31E	1.83	0.59
1:A:964:PRO:HA	1:A:967:ILE:HG12	1.86	0.58
1:B:1060:ASP:HA	1:B:1064:GLU:HB2	1.84	0.58
1:A:674:VAL:HA	1:A:677:LYS:HE2	1.86	0.57
1:A:350:MET:SD	1:A:350:MET:N	2.71	0.57
1:A:627:PRO:HB2	1:A:693:HIS:HB3	1.87	0.56
1:A:852:ASP:N	1:A:852:ASP:OD1	2.37	0.56
4:B:1204:POV:H36	4:B:1204:POV:H24	1.88	0.56
1:A:1069:LYS:O	1:A:1073:GLN:NE2	2.39	0.56
1:A:559:ILE:O	1:A:677:LYS:NZ	2.39	0.55
1:B:964:PRO:HA	1:B:967:ILE:HG12	1.88	0.55
1:B:958:GLY:HA3	1:B:1131:VAL:HG21	1.88	0.55
1:B:350:MET:SD	1:B:350:MET:N	2.80	0.55
1:A:846:ARG:NH1	1:A:1115:SER:O	2.40	0.54
1:A:801:LEU:HD23	1:B:800:GLY:HA2	1.90	0.53
1:A:1022:SER:HA	1:A:1025:LEU:HB2	1.90	0.53
1:B:274:ALA:HB2	1:B:427:ASN:HA	1.90	0.53
1:A:771:LEU:O	1:A:776:SER:OG	2.26	0.53
1:A:224:VAL:N	3:A:1202:CL:CL	2.80	0.52
1:A:800:GLY:HA2	1:B:801:LEU:HD23	1.93	0.51
1:A:830:ASN:O	1:A:834:ASP:N	2.44	0.51
4:B:1207:POV:H36	4:B:1207:POV:H22A	1.91	0.51
1:A:498:PRO:HD3	1:A:505:SER:HB2	1.94	0.50
1:A:681:VAL:HG11	1:A:769:ARG:HH22	1.76	0.50
1:B:565:ILE:O	1:B:578:ARG:NH1	2.42	0.50
1:B:1067:LYS:O	1:B:1071:ASN:ND2	2.44	0.50
1:B:224:VAL:HG13	1:B:228:ILE:HD12	1.95	0.49
1:B:988:ARG:HB3	1:B:991:HIS:HB3	1.94	0.49
1:B:1060:ASP:N	1:B:1060:ASP:OD1	2.44	0.48

Continued on next page...

Continued from previous page...

Atom-1	Atom-2	Interatomic distance (Å)	Clash overlap (Å)
1:A:224:VAL:HG23	1:A:305:TYR:HD1	1.79	0.48
1:A:1114:LEU:HD12	1:A:1123:LEU:HD11	1.96	0.48
1:B:225:MET:HB2	1:B:418:ALA:HB2	1.96	0.48
1:A:829:ILE:HD12	1:A:1107:TYR:HD2	1.77	0.48
1:B:224:VAL:N	3:B:1202:CL:CL	2.84	0.48
1:A:280:ARG:HH12	1:A:686:SER:HB3	1.79	0.48
4:B:1204:POV:H36	4:B:1204:POV:H27A	1.95	0.48
1:B:720:THR:O	1:B:726:ARG:NH2	2.46	0.47
1:B:317:LEU:HD22	1:B:322:LEU:HB2	1.96	0.47
1:A:496:CYS:O	1:A:505:SER:OG	2.29	0.47
1:B:1037:LEU:HD21	1:B:1058:ILE:HG23	1.96	0.47
1:A:224:VAL:HG13	1:A:228:ILE:HD12	1.97	0.47
1:A:317:LEU:HD22	1:A:322:LEU:HB2	1.96	0.47
1:A:939:PHE:O	1:A:972:LYS:NZ	2.47	0.47
1:A:1060:ASP:HA	1:A:1064:GLU:HB2	1.96	0.47
1:B:500:VAL:HG23	1:B:502:GLY:H	1.79	0.47
1:A:213:VAL:HG13	1:A:425:GLY:HA3	1.96	0.47
1:A:1035:TYR:O	1:A:1038:ARG:NH1	2.48	0.47
1:B:245:ILE:HG23	1:B:412:PHE:HD1	1.79	0.46
1:B:818:ARG:HD3	1:B:1031:MET:HG3	1.98	0.46
1:A:557:ASP:N	1:A:557:ASP:OD1	2.49	0.46
1:B:572:LYS:H	1:B:572:LYS:HG3	1.56	0.46
1:A:642:LEU:HD11	4:A:1204:POV:H27	1.98	0.46
1:B:730:LEU:O	1:B:734:HIS:HB2	2.16	0.46
1:A:1080:LEU:HB3	1:A:1118:LEU:HD11	1.98	0.46
1:A:990:ASP:OD1	1:A:990:ASP:N	2.44	0.45
1:A:245:ILE:HG23	1:A:412:PHE:HD1	1.82	0.45
1:A:1057:ARG:HA	1:A:1057:ARG:HD3	1.83	0.45
1:B:224:VAL:HG23	1:B:305:TYR:HD1	1.81	0.45
1:B:557:ASP:OD1	1:B:557:ASP:N	2.49	0.45
1:B:948:VAL:O	1:B:978:ILE:HA	2.16	0.45
1:A:1015:ASP:HB2	1:A:1075:ARG:HH21	1.82	0.45
1:A:1097:ALA:HB1	1:A:1102:VAL:HG21	1.98	0.45
4:B:1205:POV:H215	4:B:1206:POV:H21B	1.98	0.45
1:B:787:ASP:OD1	1:B:787:ASP:N	2.50	0.45
1:A:949:ASP:N	1:A:949:ASP:OD1	2.50	0.45
1:A:221:ILE:HD11	1:A:422:ILE:HG22	1.99	0.44
1:B:816:ASP:OD1	1:B:816:ASP:N	2.42	0.44
1:B:1097:ALA:HB1	1:B:1102:VAL:HG21	1.99	0.44
4:B:1206:POV:H211	4:B:1206:POV:H28A	1.82	0.44
1:A:611:TYR:O	1:A:615:ASN:ND2	2.51	0.43

Continued on next page...

Continued from previous page...

Atom-1	Atom-2	Interatomic distance (Å)	Clash overlap (Å)
1:A:282:LEU:HD13	1:A:617:SER:HB2	2.01	0.43
1:B:595:GLU:HB3	1:B:598:VAL:HG22	2.01	0.43
1:B:588:LEU:HA	1:B:591:ILE:HD12	2.01	0.43
1:B:826:GLU:OE2	1:B:1104:SER:OG	2.34	0.43
1:A:706:ALA:HB3	1:A:709:ILE:HG12	2.00	0.43
1:A:970:LYS:HD3	1:A:970:LYS:HA	1.88	0.43
1:B:1038:ARG:HD3	1:B:1038:ARG:HA	1.85	0.43
1:A:382:LYS:HD2	1:A:387:PHE:HE1	1.83	0.42
1:A:1102:VAL:HG13	1:A:1106:LEU:HD23	2.01	0.42
4:A:1205:POV:H35	4:A:1205:POV:H32	1.73	0.42
1:B:367:ALA:HA	1:B:528:ILE:HG22	2.01	0.42
1:A:524:PHE:HD1	1:A:528:ILE:HG12	1.84	0.42
1:B:718:VAL:HA	1:B:810:VAL:HG13	2.01	0.42
1:B:970:LYS:HD3	1:B:970:LYS:HA	1.87	0.42
1:B:336:THR:O	1:B:340:ILE:HG12	2.20	0.42
1:B:509:PHE:O	1:B:513:ASN:ND2	2.52	0.42
1:B:221:ILE:HD11	1:B:422:ILE:HG22	2.02	0.42
1:B:738:LYS:HZ1	1:B:970:LYS:HD2	1.85	0.42
1:B:1122:LEU:HD23	1:B:1122:LEU:HA	1.91	0.42
4:B:1205:POV:H13B	4:B:1205:POV:H11A	1.88	0.42
1:A:225:MET:HB2	1:A:418:ALA:HB2	2.02	0.42
1:B:409:PHE:HA	1:B:412:PHE:HB3	2.01	0.41
1:B:1037:LEU:HA	1:B:1037:LEU:HD22	1.74	0.41
1:B:318:MET:HG2	1:B:323:LEU:HD13	2.02	0.41
1:A:343:LEU:HD11	1:A:580:TYR:HB3	2.02	0.41
1:A:829:ILE:HD11	1:A:1108:MET:HG2	2.02	0.41
1:B:360:LEU:HD13	1:B:538:SER:HB3	2.02	0.41
1:B:730:LEU:O	1:B:734:HIS:CB	2.69	0.41
1:B:1099:LYS:HB2	1:B:1099:LYS:HE3	1.86	0.41
4:B:1206:POV:H214	4:B:1206:POV:H21G	1.90	0.41
1:B:1063:LEU:O	1:B:1067:LYS:NZ	2.40	0.41
1:B:940:GLN:O	1:B:972:LYS:NZ	2.53	0.41
4:B:1204:POV:H28	4:B:1204:POV:H21A	1.75	0.41
1:A:593:ILE:HB	1:A:599:ILE:HD11	2.02	0.41
1:A:1090:ILE:HB	1:A:1121:ILE:HG13	2.03	0.41
1:B:593:ILE:HB	1:B:599:ILE:HD11	2.02	0.41
1:A:937:GLN:HB2	1:A:940:GLN:HE22	1.85	0.41
1:A:1119:PRO:O	1:A:1121:ILE:N	2.53	0.41
1:A:1021:LYS:HD3	1:A:1021:LYS:HA	1.93	0.41
1:A:1054:GLU:OE1	1:A:1057:ARG:NE	2.54	0.41
1:A:758:LYS:HE2	1:A:759:GLU:HG2	2.03	0.40

Continued on next page...

Continued from previous page...

Atom-1	Atom-2	Interatomic distance (Å)	Clash overlap (Å)
1:A:409:PHE:HA	1:A:412:PHE:HB3	2.02	0.40
4:A:1204:POV:H25A	4:A:1206:POV:H39	2.03	0.40
1:A:379:VAL:HB	1:A:382:LYS:HG3	2.03	0.40

There are no symmetry-related clashes.

5.3 Torsion angles [i](#)

5.3.1 Protein backbone [i](#)

In the following table, the Percentiles column shows the percent Ramachandran outliers of the chain as a percentile score with respect to all PDB entries followed by that with respect to all EM entries.

The Analysed column shows the number of residues for which the backbone conformation was analysed, and the total number of residues.

Mol	Chain	Analysed	Favoured	Allowed	Outliers	Percentiles
1	A	857/914 (94%)	784 (92%)	72 (8%)	1 (0%)	48 77
1	B	857/914 (94%)	784 (92%)	73 (8%)	0	100 100
All	All	1714/1828 (94%)	1568 (92%)	145 (8%)	1 (0%)	50 77

All (1) Ramachandran outliers are listed below:

Mol	Chain	Res	Type
1	A	1120	PRO

5.3.2 Protein sidechains [i](#)

In the following table, the Percentiles column shows the percent sidechain outliers of the chain as a percentile score with respect to all PDB entries followed by that with respect to all EM entries.

The Analysed column shows the number of residues for which the sidechain conformation was analysed, and the total number of residues.

Mol	Chain	Analysed	Rotameric	Outliers	Percentiles
1	A	717/765 (94%)	669 (93%)	48 (7%)	13 39
1	B	717/765 (94%)	670 (93%)	47 (7%)	14 39

Continued on next page...

Continued from previous page...

Mol	Chain	Analysed	Rotameric	Outliers	Percentiles	
All	All	1434/1530 (94%)	1339 (93%)	95 (7%)	16	39

All (95) residues with a non-rotameric sidechain are listed below:

Mol	Chain	Res	Type
1	A	350	MET
1	A	369	PHE
1	A	372	PHE
1	A	384	LYS
1	A	407	THR
1	A	437	MET
1	A	470	THR
1	A	496	CYS
1	A	504	VAL
1	A	544	LEU
1	A	557	ASP
1	A	572	LYS
1	A	573	ASN
1	A	610	SER
1	A	630	ARG
1	A	662	LEU
1	A	668	LEU
1	A	677	LYS
1	A	682	ASN
1	A	696	LEU
1	A	708	HIS
1	A	730	LEU
1	A	748	VAL
1	A	750	ILE
1	A	760	LEU
1	A	772	LEU
1	A	784	VAL
1	A	801	LEU
1	A	810	VAL
1	A	824	GLU
1	A	852	ASP
1	A	933	LEU
1	A	950	VAL
1	A	956	ASP
1	A	960	THR
1	A	972	LYS
1	A	975	ASP

Continued on next page...

Continued from previous page...

Mol	Chain	Res	Type
1	A	989	ILE
1	A	1007	PHE
1	A	1038	ARG
1	A	1039	GLU
1	A	1048	GLU
1	A	1059	THR
1	A	1108	MET
1	A	1112	ASP
1	A	1114	LEU
1	A	1132	LEU
1	A	1133	THR
1	B	207	PHE
1	B	214	LEU
1	B	229	ARG
1	B	384	LYS
1	B	437	MET
1	B	468	ASP
1	B	496	CYS
1	B	507	CYS
1	B	508	LYS
1	B	525	SER
1	B	544	LEU
1	B	557	ASP
1	B	572	LYS
1	B	573	ASN
1	B	610	SER
1	B	662	LEU
1	B	668	LEU
1	B	678	LYS
1	B	681	VAL
1	B	683	TRP
1	B	703	CYS
1	B	744	LEU
1	B	750	ILE
1	B	771	LEU
1	B	784	VAL
1	B	801	LEU
1	B	810	VAL
1	B	955	ASP
1	B	975	ASP
1	B	990	ASP
1	B	1004	ARG

Continued on next page...

Continued from previous page...

Mol	Chain	Res	Type
1	B	1032	ILE
1	B	1037	LEU
1	B	1038	ARG
1	B	1057	ARG
1	B	1060	ASP
1	B	1062	GLU
1	B	1080	LEU
1	B	1089	LEU
1	B	1107	TYR
1	B	1113	THR
1	B	1114	LEU
1	B	1117	ASP
1	B	1124	VAL
1	B	1131	VAL
1	B	1132	LEU
1	B	1135	TYR

Sometimes sidechains can be flipped to improve hydrogen bonding and reduce clashes. All (16) such sidechains are listed below:

Mol	Chain	Res	Type
1	A	327	GLN
1	A	357	GLN
1	A	664	ASN
1	A	739	ASN
1	A	768	GLN
1	A	815	ASN
1	B	298	ASN
1	B	327	GLN
1	B	357	GLN
1	B	427	ASN
1	B	436	GLN
1	B	664	ASN
1	B	701	GLN
1	B	793	GLN
1	B	938	GLN
1	B	1071	ASN

5.3.3 RNA [i](#)

There are no RNA molecules in this entry.

5.4 Non-standard residues in protein, DNA, RNA chains [i](#)

There are no non-standard protein/DNA/RNA residues in this entry.

5.5 Carbohydrates [i](#)

There are no oligosaccharides in this entry.

5.6 Ligand geometry [i](#)

Of 13 ligands modelled in this entry, 6 are monoatomic - leaving 7 for Mogul analysis.

In the following table, the Counts columns list the number of bonds (or angles) for which Mogul statistics could be retrieved, the number of bonds (or angles) that are observed in the model and the number of bonds (or angles) that are defined in the Chemical Component Dictionary. The Link column lists molecule types, if any, to which the group is linked. The Z score for a bond length (or angle) is the number of standard deviations the observed value is removed from the expected value. A bond length (or angle) with $|Z| > 2$ is considered an outlier worth inspection. RMSZ is the root-mean-square of all Z scores of the bond lengths (or angles).

Mol	Type	Chain	Res	Link	Bond lengths			Bond angles		
					Counts	RMSZ	# Z > 2	Counts	RMSZ	# Z > 2
4	POV	B	1207	-	51,51,51	1.38	4 (7%)	57,59,59	1.03	2 (3%)
4	POV	A	1206	-	51,51,51	1.35	4 (7%)	57,59,59	3.06	9 (15%)
4	POV	B	1204	-	51,51,51	1.39	6 (11%)	57,59,59	0.98	2 (3%)
4	POV	A	1204	-	51,51,51	1.36	6 (11%)	57,59,59	1.11	2 (3%)
4	POV	B	1205	-	51,51,51	1.35	4 (7%)	57,59,59	1.13	3 (5%)
4	POV	A	1205	-	51,51,51	1.40	6 (11%)	57,59,59	0.97	2 (3%)
4	POV	B	1206	-	51,51,51	1.34	4 (7%)	57,59,59	1.05	2 (3%)

In the following table, the Chirals column lists the number of chiral outliers, the number of chiral centers analysed, the number of these observed in the model and the number defined in the Chemical Component Dictionary. Similar counts are reported in the Torsion and Rings columns. '-' means no outliers of that kind were identified.

Mol	Type	Chain	Res	Link	Chirals	Torsions	Rings
4	POV	B	1207	-	-	29/55/55/55	-
4	POV	A	1206	-	-	29/55/55/55	-
4	POV	B	1204	-	-	26/55/55/55	-
4	POV	A	1204	-	-	28/55/55/55	-
4	POV	B	1205	-	-	25/55/55/55	-

Continued on next page...

Continued from previous page...

Mol	Type	Chain	Res	Link	Chirals	Torsions	Rings
4	POV	A	1205	-	-	24/55/55/55	-
4	POV	B	1206	-	-	24/55/55/55	-

All (34) bond length outliers are listed below:

Mol	Chain	Res	Type	Atoms	Z	Observed(Å)	Ideal(Å)
4	A	1205	POV	O31-C31	3.73	1.44	1.33
4	B	1205	POV	O31-C31	3.58	1.43	1.33
4	B	1204	POV	O31-C31	3.54	1.43	1.33
4	A	1204	POV	O31-C31	3.51	1.43	1.33
4	B	1207	POV	O31-C31	3.46	1.43	1.33
4	A	1206	POV	O31-C31	3.42	1.43	1.33
4	B	1206	POV	O31-C31	3.41	1.43	1.33
4	A	1206	POV	O21-C21	3.38	1.43	1.34
4	A	1204	POV	O21-C2	-3.22	1.39	1.46
4	B	1207	POV	O21-C21	3.18	1.43	1.34
4	B	1206	POV	O21-C2	-3.16	1.39	1.46
4	B	1205	POV	O21-C2	-3.15	1.39	1.46
4	A	1205	POV	O21-C21	3.08	1.43	1.34
4	B	1204	POV	O21-C21	3.04	1.42	1.34
4	B	1204	POV	O21-C2	-2.98	1.39	1.46
4	B	1206	POV	O21-C21	2.98	1.42	1.34
4	A	1204	POV	O21-C21	2.92	1.42	1.34
4	A	1205	POV	O21-C2	-2.90	1.39	1.46
4	B	1207	POV	O21-C2	-2.85	1.39	1.46
4	B	1205	POV	O21-C21	2.83	1.42	1.34
4	B	1207	POV	P-O11	2.76	1.70	1.59
4	A	1205	POV	P-O11	2.73	1.70	1.59
4	B	1206	POV	P-O11	2.69	1.69	1.59
4	B	1204	POV	P-O11	2.68	1.69	1.59
4	A	1204	POV	P-O11	2.67	1.69	1.59
4	A	1206	POV	P-O11	2.64	1.69	1.59
4	B	1205	POV	P-O11	2.59	1.69	1.59
4	A	1206	POV	O21-C2	-2.18	1.41	1.46
4	A	1205	POV	P-O12	2.11	1.67	1.59
4	A	1205	POV	C32-C31	2.06	1.56	1.50
4	B	1204	POV	C32-C31	2.04	1.56	1.50
4	A	1204	POV	P-O12	2.02	1.67	1.59
4	B	1204	POV	P-O12	2.01	1.67	1.59
4	A	1204	POV	C32-C31	2.00	1.56	1.50

All (22) bond angle outliers are listed below:

Mol	Chain	Res	Type	Atoms	Z	Observed(°)	Ideal(°)
4	A	1206	POV	C14-N-C13	-11.16	79.65	108.98
4	A	1206	POV	C15-N-C13	-10.84	80.50	108.98
4	A	1206	POV	C15-N-C14	8.87	132.28	108.98
4	A	1206	POV	C14-N-C12	-7.44	80.33	109.91
4	A	1206	POV	C15-N-C12	-7.30	80.90	109.91
4	A	1206	POV	C13-N-C12	5.31	131.00	109.91
4	B	1205	POV	O21-C21-C22	4.56	121.34	111.48
4	A	1206	POV	O21-C21-C22	4.43	121.06	111.48
4	A	1204	POV	O21-C21-C22	4.30	120.78	111.48
4	B	1204	POV	O21-C21-C22	3.85	119.81	111.48
4	B	1207	POV	O21-C21-C22	3.84	119.80	111.48
4	A	1205	POV	O21-C21-C22	3.72	119.52	111.48
4	B	1206	POV	O21-C21-C22	3.64	119.34	111.48
4	A	1205	POV	O31-C31-C32	2.92	120.73	111.83
4	A	1204	POV	O31-C31-C32	2.65	119.91	111.83
4	B	1205	POV	O31-C31-C32	2.62	119.82	111.83
4	B	1207	POV	O31-C31-C32	2.61	119.80	111.83
4	B	1206	POV	O31-C31-C32	2.54	119.57	111.83
4	B	1204	POV	O31-C31-C32	2.50	119.46	111.83
4	A	1206	POV	O31-C31-C32	2.50	119.46	111.83
4	A	1206	POV	C11-C12-N	-2.03	109.31	115.82
4	B	1205	POV	C23-C22-C21	-2.01	106.34	113.69

There are no chirality outliers.

All (185) torsion outliers are listed below:

Mol	Chain	Res	Type	Atoms
4	A	1204	POV	C11-O12-P-O11
4	A	1204	POV	C11-O12-P-O14
4	A	1204	POV	O21-C2-C3-O31
4	A	1204	POV	O22-C21-O21-C2
4	A	1205	POV	C1-O11-P-O12
4	A	1205	POV	C1-O11-P-O13
4	A	1205	POV	C11-O12-P-O11
4	A	1205	POV	C11-O12-P-O13
4	A	1205	POV	O12-C11-C12-N
4	A	1206	POV	C1-O11-P-O12
4	A	1206	POV	C1-O11-P-O13
4	A	1206	POV	C1-O11-P-O14
4	A	1206	POV	C22-C21-O21-C2
4	B	1204	POV	C11-O12-P-O11
4	B	1204	POV	C11-O12-P-O13
4	B	1204	POV	C11-O12-P-O14

Continued on next page...

Continued from previous page...

Mol	Chain	Res	Type	Atoms
4	B	1204	POV	O21-C2-C3-O31
4	B	1204	POV	C22-C21-O21-C2
4	B	1205	POV	C1-O11-P-O12
4	B	1205	POV	C1-O11-P-O14
4	B	1205	POV	C11-O12-P-O11
4	B	1205	POV	C11-O12-P-O13
4	B	1205	POV	O21-C2-C3-O31
4	B	1205	POV	O12-C11-C12-N
4	B	1206	POV	C11-O12-P-O11
4	B	1206	POV	C11-O12-P-O14
4	B	1207	POV	C1-O11-P-O12
4	B	1207	POV	C1-O11-P-O14
4	B	1207	POV	C11-O12-P-O11
4	B	1207	POV	C11-O12-P-O13
4	B	1207	POV	C2-C1-O11-P
4	A	1205	POV	O32-C31-O31-C3
4	A	1206	POV	O32-C31-O31-C3
4	B	1204	POV	O32-C31-O31-C3
4	A	1205	POV	C32-C31-O31-C3
4	A	1206	POV	C32-C31-O31-C3
4	B	1204	POV	C32-C31-O31-C3
4	A	1206	POV	O22-C21-O21-C2
4	B	1204	POV	O22-C21-O21-C2
4	A	1204	POV	C22-C21-O21-C2
4	B	1207	POV	C32-C31-O31-C3
4	B	1207	POV	O32-C31-O31-C3
4	A	1204	POV	C31-C32-C33-C34
4	B	1207	POV	C21-C22-C23-C24
4	A	1206	POV	C11-C12-N-C14
4	A	1206	POV	C11-C12-N-C15
4	B	1206	POV	C22-C23-C24-C25
4	B	1205	POV	C24-C25-C26-C27
4	A	1204	POV	C22-C23-C24-C25
4	A	1206	POV	C34-C35-C36-C37
4	A	1204	POV	C312-C313-C314-C315
4	B	1206	POV	C212-C213-C214-C215
4	B	1207	POV	C33-C34-C35-C36
4	A	1206	POV	C211-C212-C213-C214
4	B	1206	POV	C39-C310-C311-C312
4	B	1206	POV	C31-C32-C33-C34
4	B	1204	POV	C36-C37-C38-C39
4	B	1205	POV	C22-C21-O21-C2

Continued on next page...

Continued from previous page...

Mol	Chain	Res	Type	Atoms
4	B	1206	POV	C21-C22-C23-C24
4	B	1205	POV	C25-C26-C27-C28
4	A	1204	POV	C212-C213-C214-C215
4	A	1206	POV	C24-C25-C26-C27
4	A	1206	POV	C23-C24-C25-C26
4	B	1206	POV	C37-C38-C39-C310
4	B	1205	POV	O22-C21-O21-C2
4	A	1205	POV	C211-C212-C213-C214
4	B	1205	POV	C31-C32-C33-C34
4	A	1206	POV	C21-C22-C23-C24
4	B	1205	POV	C26-C27-C28-C29
4	B	1207	POV	C210-C211-C212-C213
4	A	1205	POV	C22-C23-C24-C25
4	A	1204	POV	C211-C212-C213-C214
4	B	1206	POV	C310-C311-C312-C313
4	B	1205	POV	C23-C24-C25-C26
4	B	1205	POV	C34-C35-C36-C37
4	A	1206	POV	C2-C1-O11-P
4	A	1206	POV	C210-C211-C212-C213
4	B	1206	POV	C26-C27-C28-C29
4	B	1206	POV	C25-C26-C27-C28
4	A	1204	POV	C21-C22-C23-C24
4	A	1206	POV	C311-C312-C313-C314
4	A	1204	POV	C1-C2-C3-O31
4	A	1204	POV	C210-C211-C212-C213
4	B	1207	POV	C26-C27-C28-C29
4	B	1207	POV	C213-C214-C215-C216
4	A	1206	POV	C36-C37-C38-C39
4	A	1205	POV	C311-C310-C39-C38
4	B	1205	POV	C211-C212-C213-C214
4	A	1204	POV	C32-C31-O31-C3
4	B	1205	POV	C210-C211-C212-C213
4	B	1205	POV	C39-C310-C311-C312
4	A	1205	POV	C312-C313-C314-C315
4	B	1205	POV	O11-C1-C2-O21
4	A	1206	POV	C25-C26-C27-C28
4	A	1206	POV	C32-C33-C34-C35
4	A	1204	POV	C311-C310-C39-C38
4	B	1205	POV	C33-C34-C35-C36
4	A	1205	POV	C313-C314-C315-C316
4	B	1204	POV	C35-C36-C37-C38
4	A	1204	POV	C23-C24-C25-C26

Continued on next page...

Continued from previous page...

Mol	Chain	Res	Type	Atoms
4	B	1207	POV	C31-C32-C33-C34
4	A	1204	POV	C33-C34-C35-C36
4	A	1205	POV	O11-C1-C2-C3
4	A	1205	POV	C214-C215-C216-C217
4	A	1204	POV	C36-C37-C38-C39
4	A	1204	POV	O32-C31-O31-C3
4	B	1204	POV	C23-C24-C25-C26
4	B	1204	POV	C1-C2-C3-O31
4	B	1206	POV	C1-C2-C3-O31
4	A	1205	POV	C25-C26-C27-C28
4	B	1207	POV	C32-C33-C34-C35
4	B	1206	POV	O21-C2-C3-O31
4	A	1205	POV	C32-C33-C34-C35
4	B	1205	POV	C310-C311-C312-C313
4	B	1206	POV	C23-C24-C25-C26
4	B	1207	POV	C34-C35-C36-C37
4	B	1207	POV	O11-C1-C2-C3
4	B	1206	POV	C211-C212-C213-C214
4	A	1206	POV	C1-C2-O21-C21
4	B	1206	POV	C210-C211-C212-C213
4	A	1205	POV	O11-C1-C2-O21
4	B	1206	POV	C215-C216-C217-C218
4	B	1204	POV	C22-C23-C24-C25
4	A	1205	POV	C37-C38-C39-C310
4	B	1207	POV	O21-C2-C3-O31
4	A	1206	POV	C214-C215-C216-C217
4	B	1204	POV	C33-C34-C35-C36
4	B	1207	POV	C211-C212-C213-C214
4	A	1205	POV	C34-C35-C36-C37
4	A	1204	POV	O12-C11-C12-N
4	A	1206	POV	O12-C11-C12-N
4	B	1204	POV	O12-C11-C12-N
4	B	1206	POV	O12-C11-C12-N
4	B	1207	POV	O12-C11-C12-N
4	A	1206	POV	C311-C310-C39-C38
4	B	1204	POV	C31-C32-C33-C34
4	B	1205	POV	O11-C1-C2-C3
4	B	1207	POV	O11-C1-C2-O21
4	B	1204	POV	C215-C216-C217-C218
4	B	1205	POV	C1-C2-C3-O31
4	B	1207	POV	C1-C2-C3-O31
4	A	1206	POV	C33-C34-C35-C36

Continued on next page...

Continued from previous page...

Mol	Chain	Res	Type	Atoms
4	A	1205	POV	C1-O11-P-O14
4	B	1205	POV	C11-O12-P-O14
4	A	1204	POV	C35-C36-C37-C38
4	B	1207	POV	C312-C313-C314-C315
4	B	1207	POV	C25-C26-C27-C28
4	A	1206	POV	C213-C214-C215-C216
4	B	1204	POV	C211-C212-C213-C214
4	B	1205	POV	C311-C312-C313-C314
4	A	1206	POV	C26-C27-C28-C29
4	A	1205	POV	C36-C37-C38-C39
4	B	1207	POV	C22-C23-C24-C25
4	B	1206	POV	C24-C25-C26-C27
4	A	1204	POV	C26-C27-C28-C29
4	A	1204	POV	C29-C210-C211-C212
4	B	1207	POV	C23-C24-C25-C26
4	B	1204	POV	C310-C311-C312-C313
4	B	1206	POV	O22-C21-O21-C2
4	B	1204	POV	O11-C1-C2-O21
4	B	1206	POV	O31-C31-C32-C33
4	B	1207	POV	C27-C28-C29-C210
4	B	1204	POV	C34-C35-C36-C37
4	B	1205	POV	C32-C33-C34-C35
4	B	1204	POV	O11-C1-C2-C3
4	A	1204	POV	C310-C311-C312-C313
4	B	1204	POV	O21-C21-C22-C23
4	B	1206	POV	C22-C21-O21-C2
4	A	1204	POV	C32-C33-C34-C35
4	A	1205	POV	C27-C28-C29-C210
4	A	1204	POV	C313-C314-C315-C316
4	A	1204	POV	C215-C216-C217-C218
4	B	1207	POV	O31-C31-C32-C33
4	B	1204	POV	C24-C25-C26-C27
4	A	1205	POV	O21-C21-C22-C23
4	B	1204	POV	O22-C21-C22-C23
4	A	1206	POV	O21-C21-C22-C23
4	B	1206	POV	O21-C21-C22-C23
4	B	1207	POV	O32-C31-C32-C33
4	B	1204	POV	C213-C214-C215-C216
4	A	1204	POV	O21-C21-C22-C23
4	B	1207	POV	O21-C21-C22-C23
4	B	1206	POV	O22-C21-C22-C23
4	A	1205	POV	O22-C21-C22-C23

Continued on next page...

Continued from previous page...

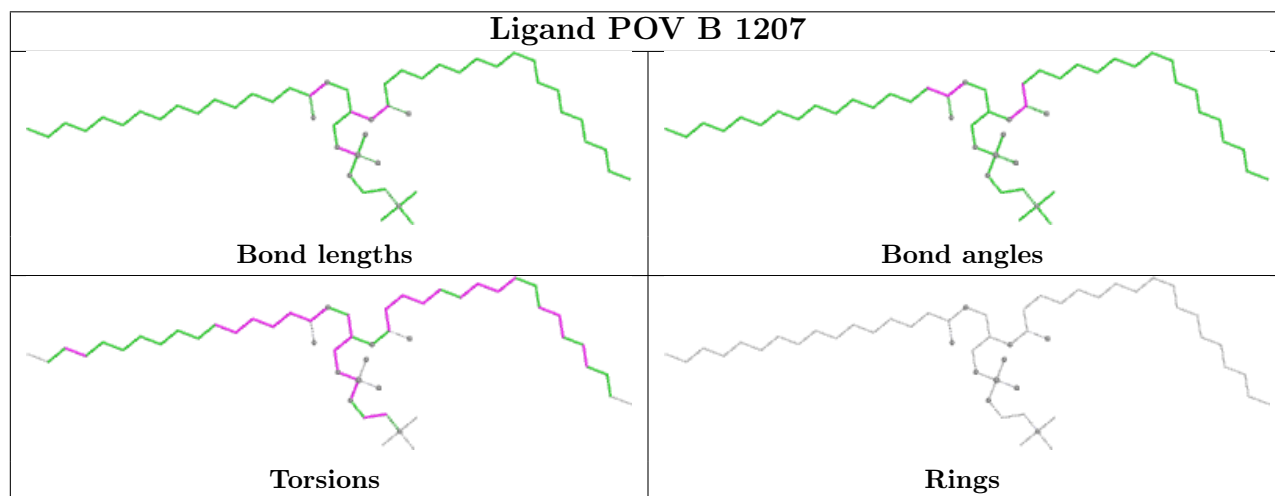
Mol	Chain	Res	Type	Atoms
4	A	1206	POV	O22-C21-C22-C23

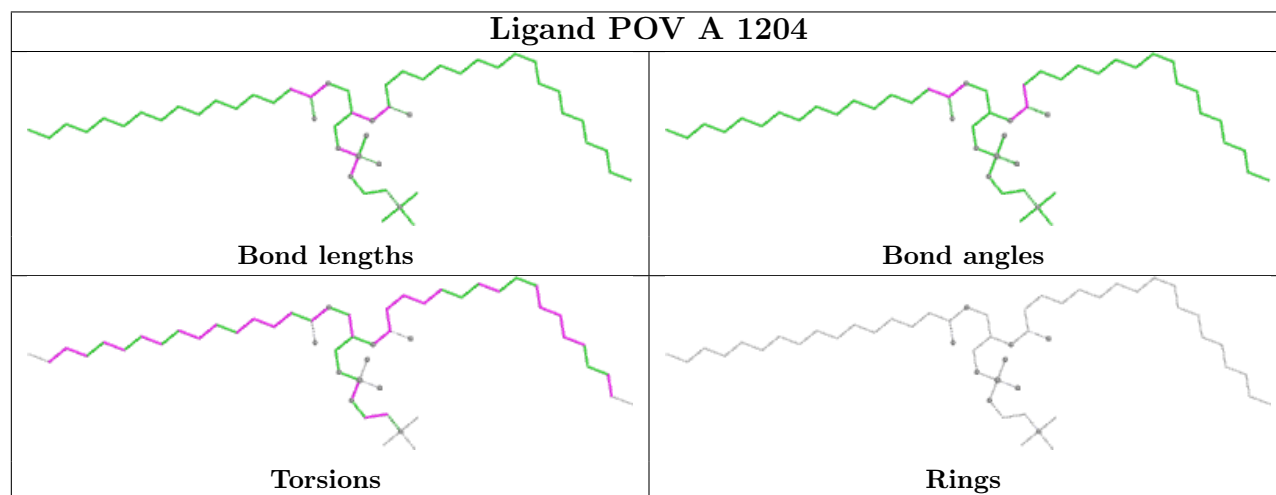
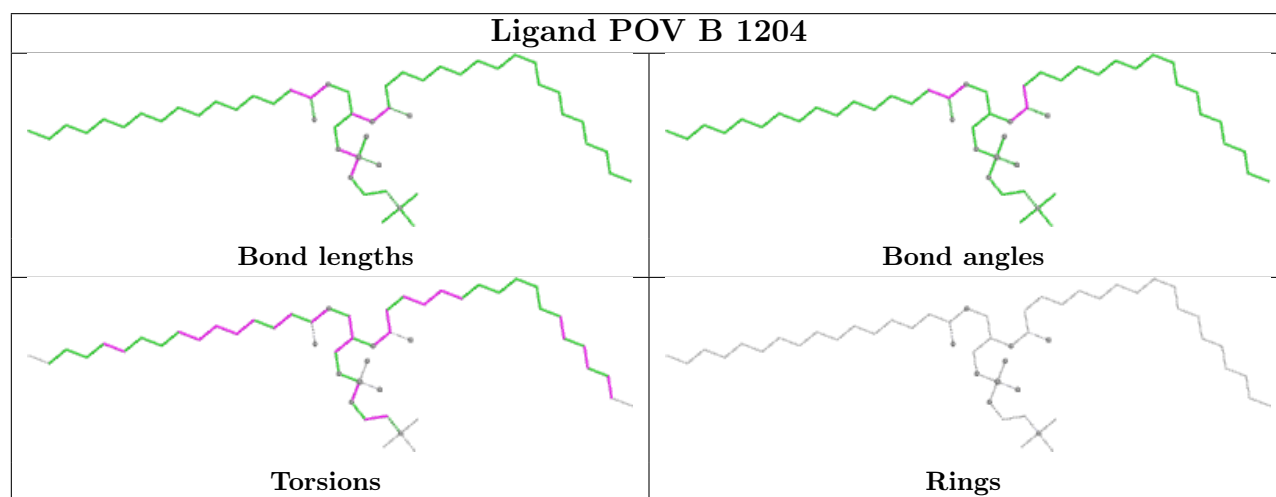
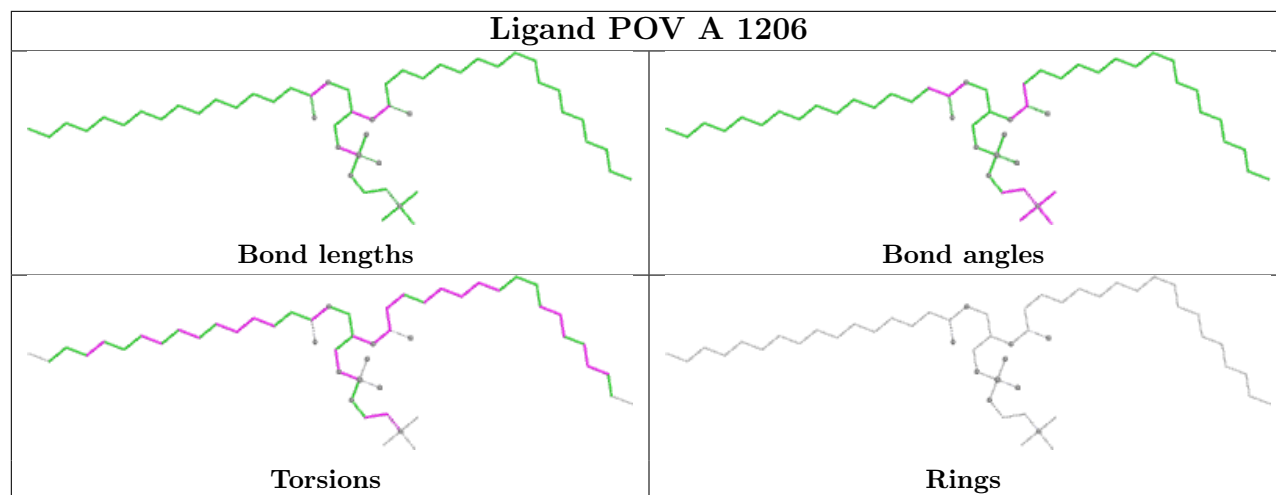
There are no ring outliers.

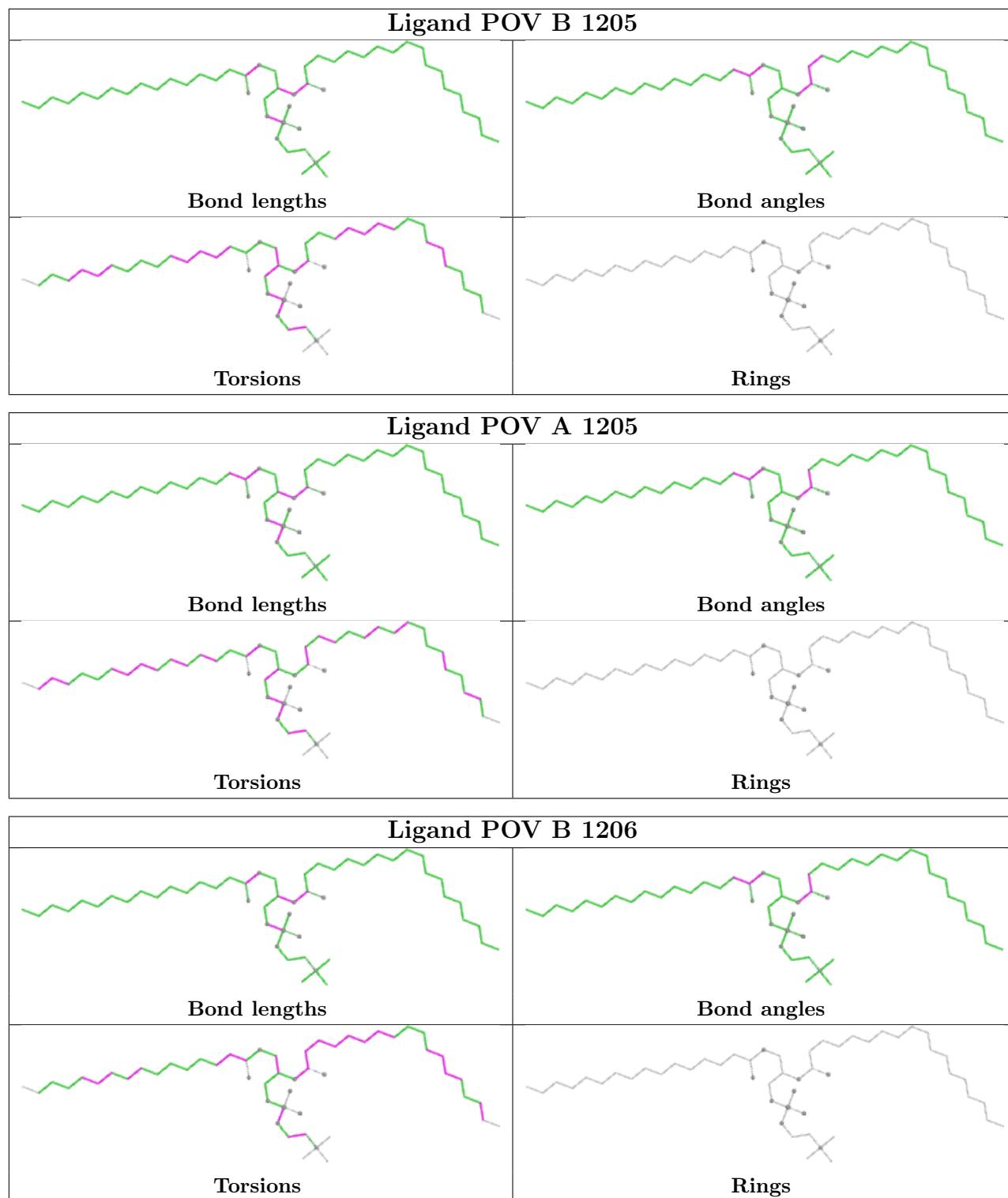
7 monomers are involved in 12 short contacts:

Mol	Chain	Res	Type	Clashes	Symm-Clashes
4	B	1207	POV	1	0
4	A	1206	POV	1	0
4	B	1204	POV	3	0
4	A	1204	POV	2	0
4	B	1205	POV	2	0
4	A	1205	POV	1	0
4	B	1206	POV	4	0

The following is a two-dimensional graphical depiction of Mogul quality analysis of bond lengths, bond angles, torsion angles, and ring geometry for all instances of the Ligand of Interest. In addition, ligands with molecular weight > 250 and outliers as shown on the validation Tables will also be included. For torsion angles, if less than 5% of the Mogul distribution of torsion angles is within 10 degrees of the torsion angle in question, then that torsion angle is considered an outlier. Any bond that is central to one or more torsion angles identified as an outlier by Mogul will be highlighted in the graph. For rings, the root-mean-square deviation (RMSD) between the ring in question and similar rings identified by Mogul is calculated over all ring torsion angles. If the average RMSD is greater than 60 degrees and the minimal RMSD between the ring in question and any Mogul-identified rings is also greater than 60 degrees, then that ring is considered an outlier. The outliers are highlighted in purple. The color gray indicates Mogul did not find sufficient equivalents in the CSD to analyse the geometry.







5.7 Other polymers [\(i\)](#)

There are no such residues in this entry.

5.8 Polymer linkage issues

There are no chain breaks in this entry.

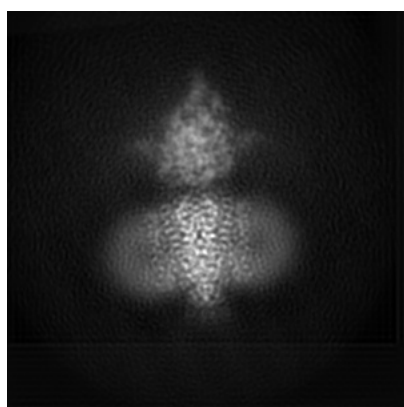
6 Map visualisation [i](#)

This section contains visualisations of the EMDB entry EMD-0473. These allow visual inspection of the internal detail of the map and identification of artifacts.

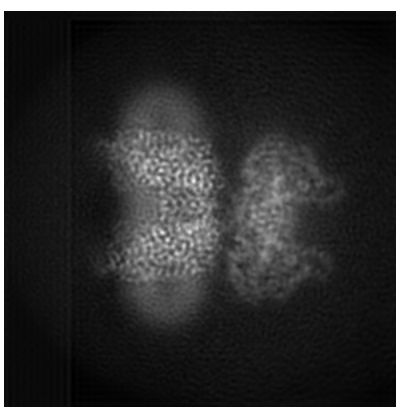
No raw map or half-maps were deposited for this entry and therefore no images, graphs, etc. pertaining to the raw map can be shown.

6.1 Orthogonal projections [i](#)

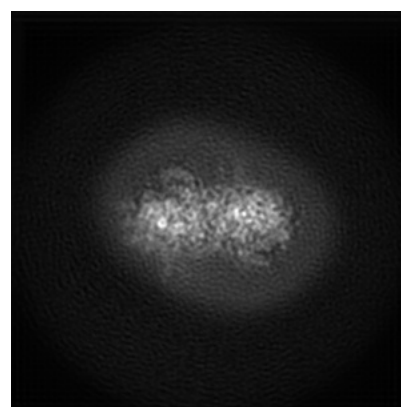
6.1.1 Primary map



X



Y

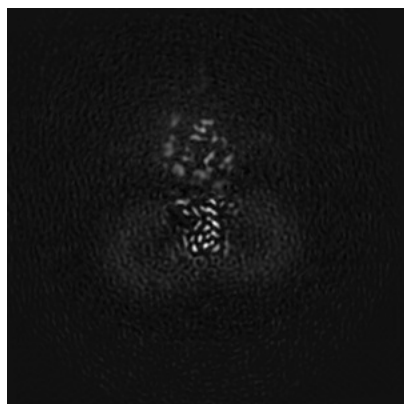


Z

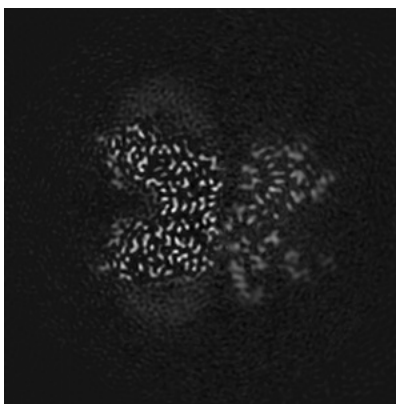
The images above show the map projected in three orthogonal directions.

6.2 Central slices [i](#)

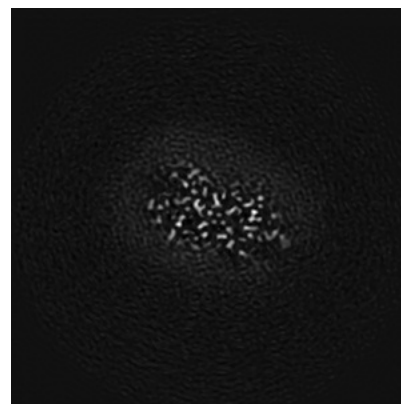
6.2.1 Primary map



X Index: 110



Y Index: 110

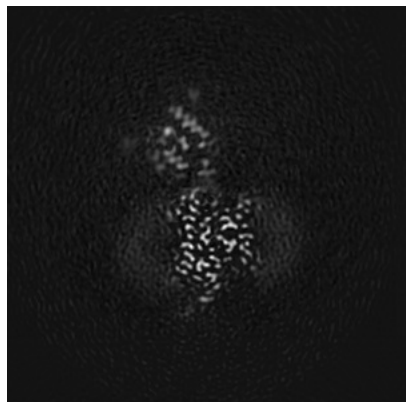


Z Index: 110

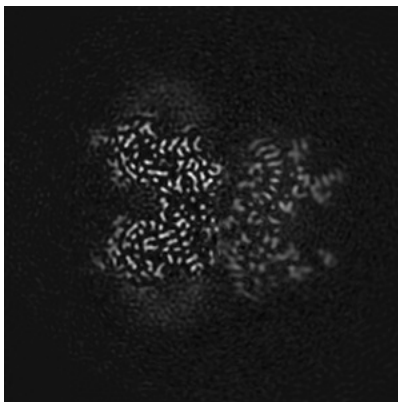
The images above show central slices of the map in three orthogonal directions.

6.3 Largest variance slices [\(i\)](#)

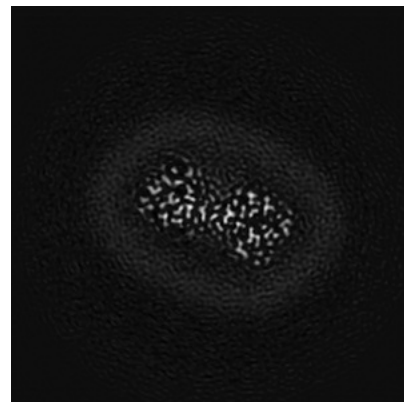
6.3.1 Primary map



X Index: 90



Y Index: 108

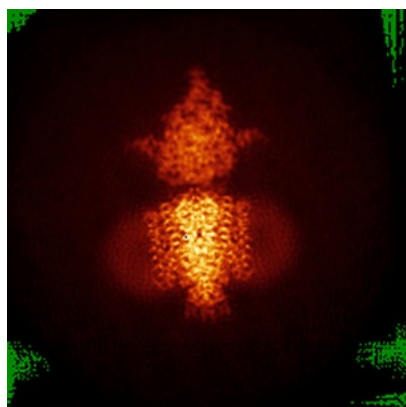


Z Index: 86

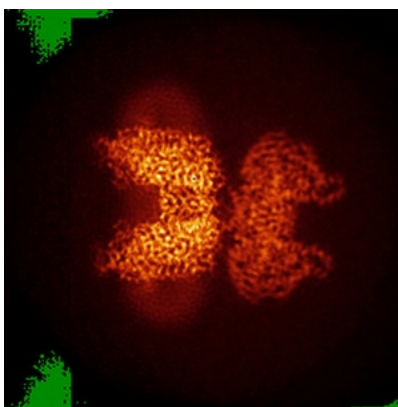
The images above show the largest variance slices of the map in three orthogonal directions.

6.4 Orthogonal standard-deviation projections (False-color) [\(i\)](#)

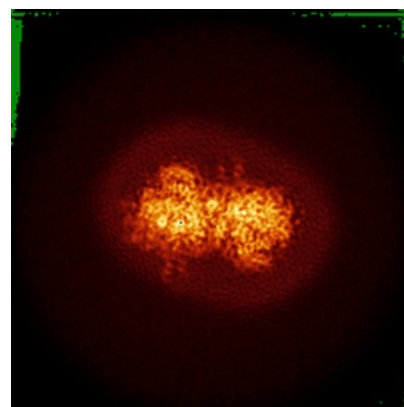
6.4.1 Primary map



X



Y



Z

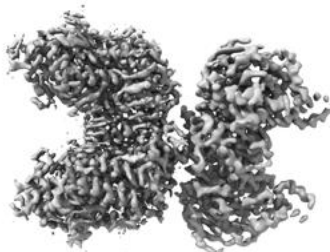
The images above show the map standard deviation projections with false color in three orthogonal directions. Minimum values are shown in green, max in blue, and dark to light orange shades represent small to large values respectively.

6.5 Orthogonal surface views [i](#)

6.5.1 Primary map



X



Y



Z

The images above show the 3D surface view of the map at the recommended contour level 0.056. These images, in conjunction with the slice images, may facilitate assessment of whether an appropriate contour level has been provided.

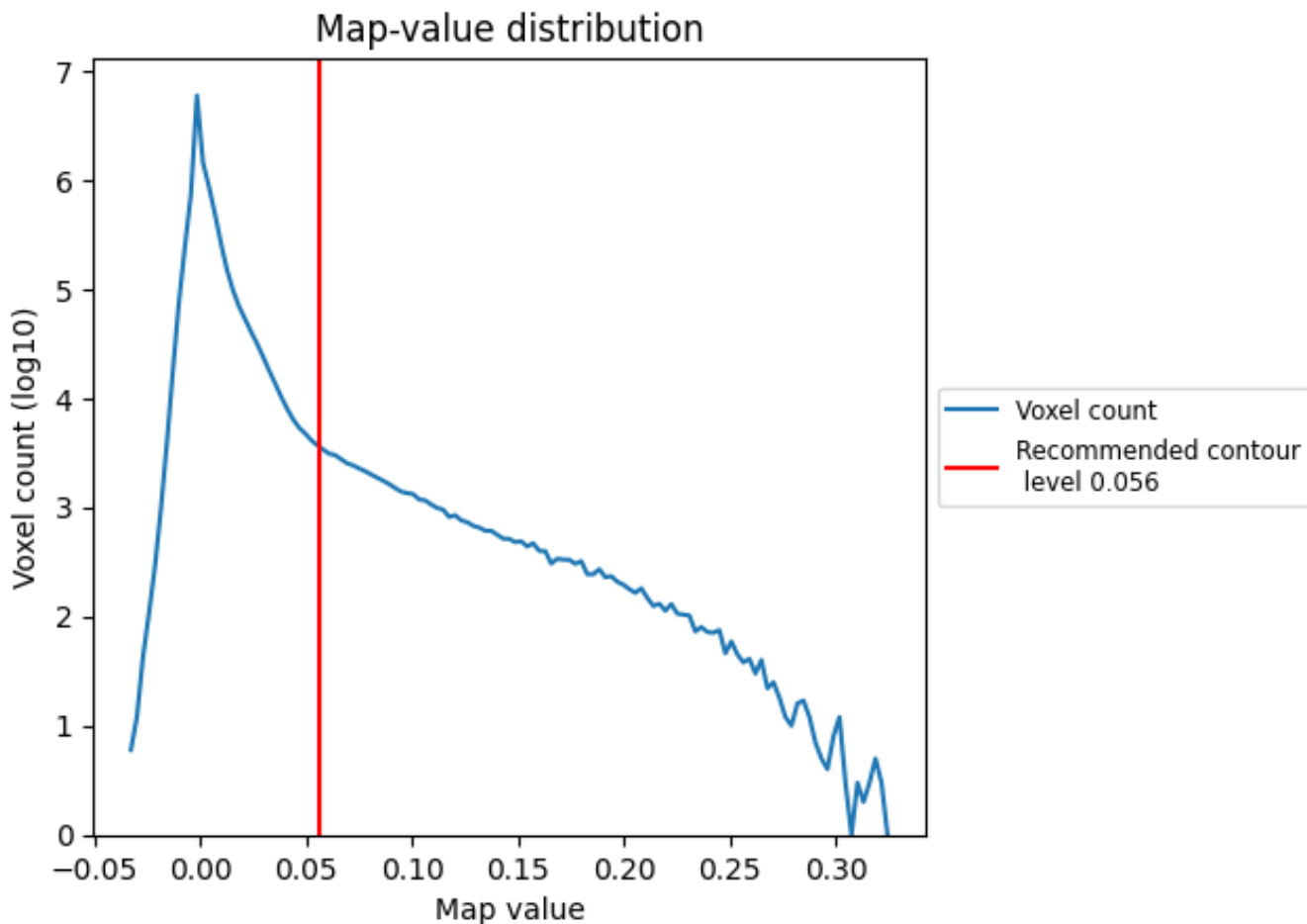
6.6 Mask visualisation [i](#)

This section was not generated. No masks/segmentation were deposited.

7 Map analysis [i](#)

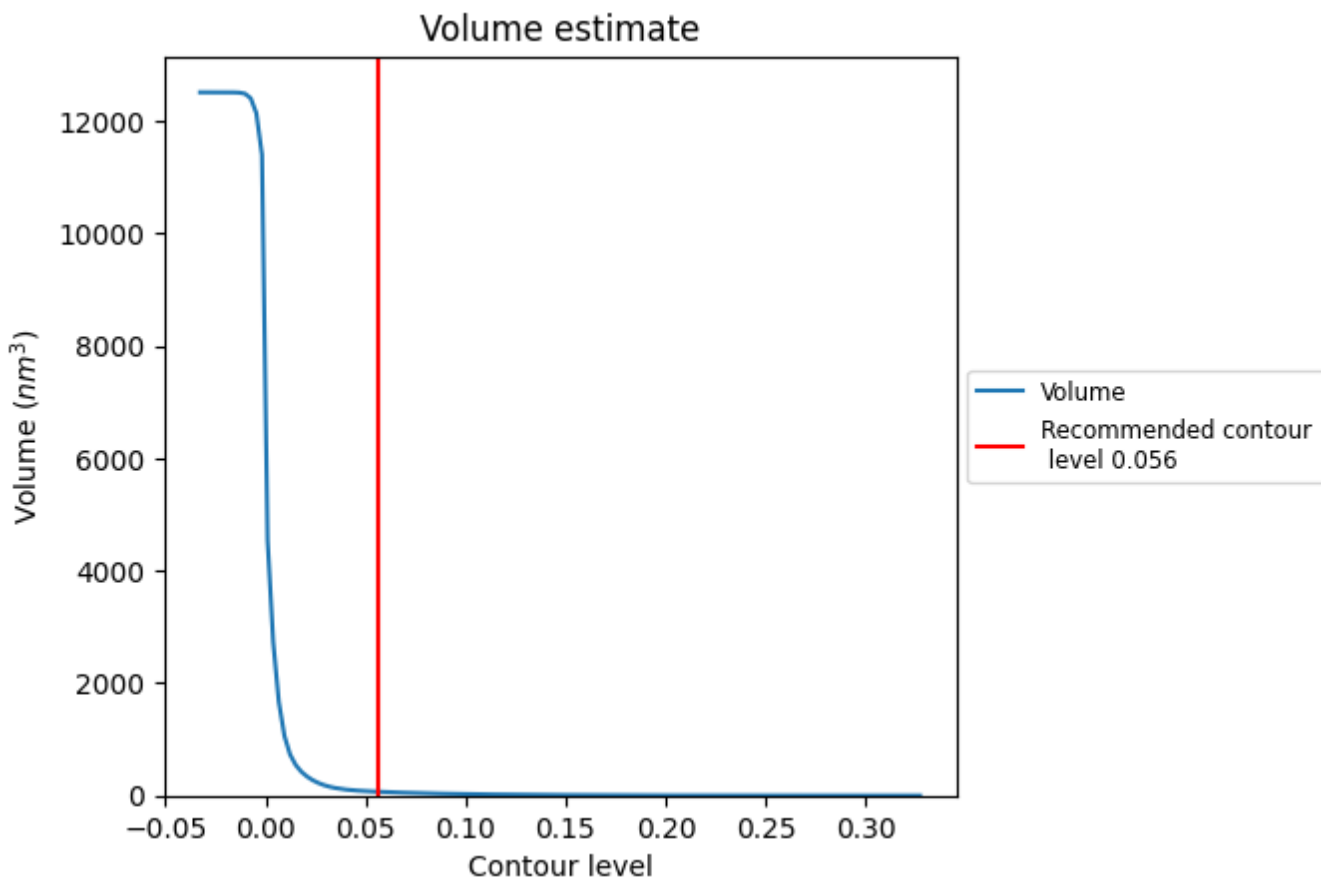
This section contains the results of statistical analysis of the map.

7.1 Map-value distribution [i](#)



The map-value distribution is plotted in 128 intervals along the x-axis. The y-axis is logarithmic. A spike in this graph at zero usually indicates that the volume has been masked.

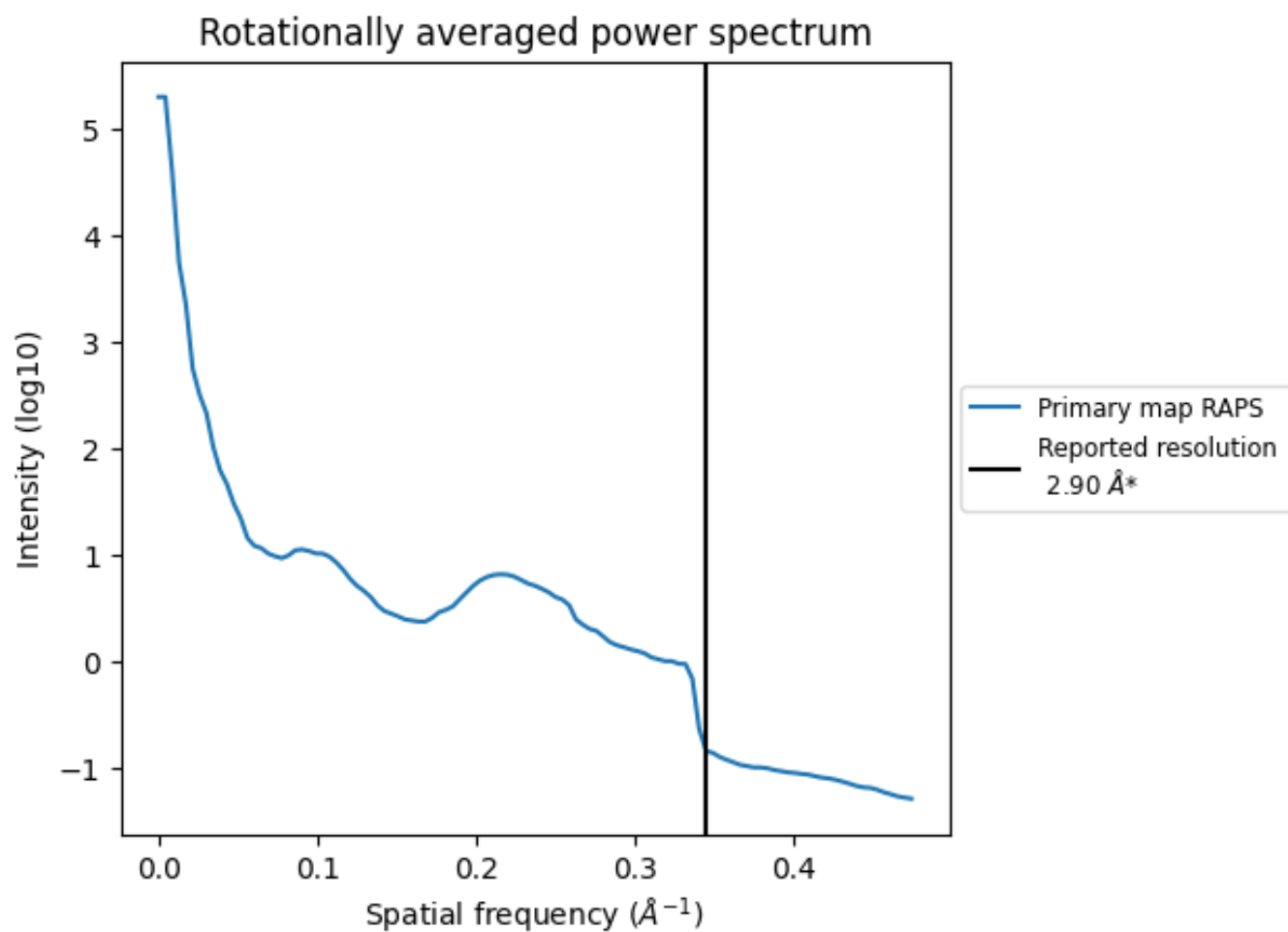
7.2 Volume estimate [i](#)



The volume at the recommended contour level is 68 nm^3 ; this corresponds to an approximate mass of 62 kDa.

The volume estimate graph shows how the enclosed volume varies with the contour level. The recommended contour level is shown as a vertical line and the intersection between the line and the curve gives the volume of the enclosed surface at the given level.

7.3 Rotationally averaged power spectrum [i](#)



*Reported resolution corresponds to spatial frequency of 0.345 Å⁻¹

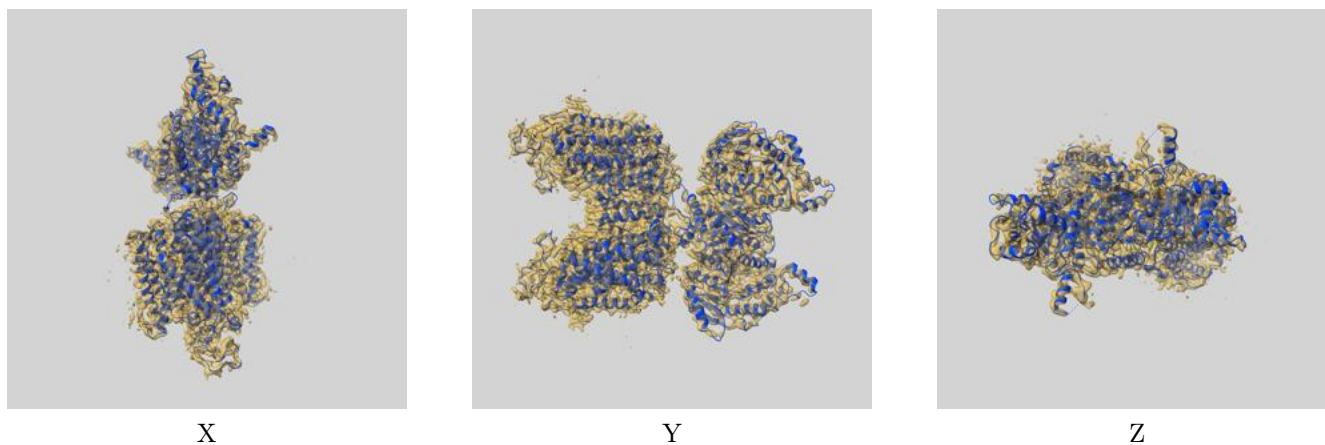
8 Fourier-Shell correlation

This section was not generated. No FSC curve or half-maps provided.

9 Map-model fit [i](#)

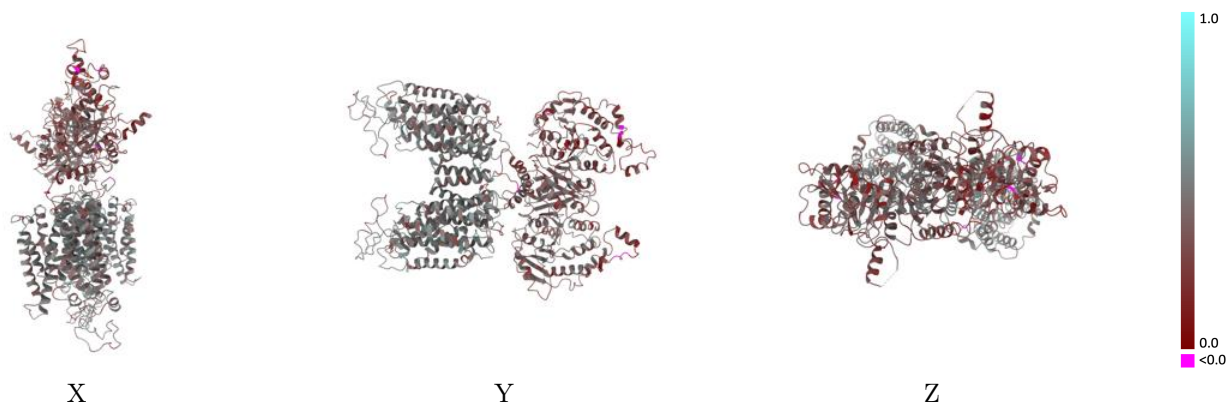
This section contains information regarding the fit between EMDB map EMD-0473 and PDB model 6NPL. Per-residue inclusion information can be found in section 3 on page 5.

9.1 Map-model overlay [i](#)



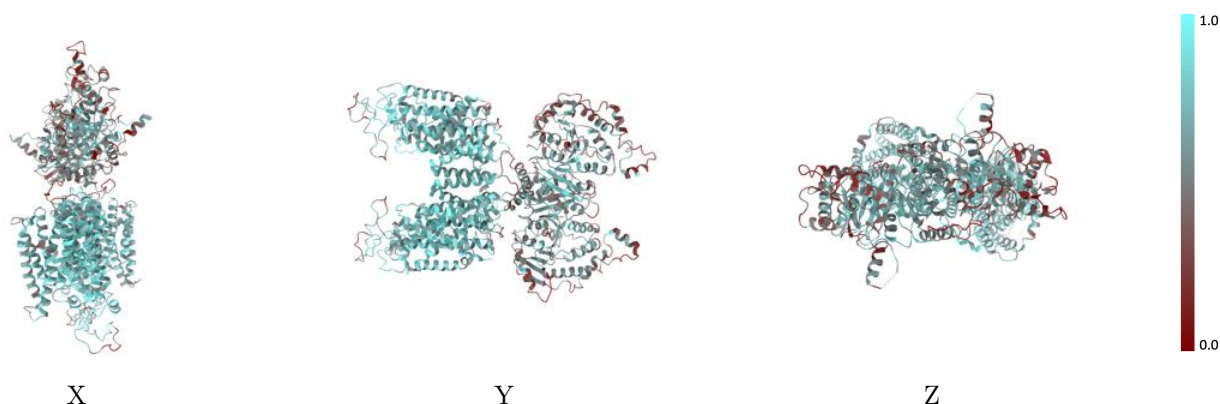
The images above show the 3D surface view of the map at the recommended contour level 0.056 at 50% transparency in yellow overlaid with a ribbon representation of the model coloured in blue. These images allow for the visual assessment of the quality of fit between the atomic model and the map.

9.2 Q-score mapped to coordinate model [i](#)



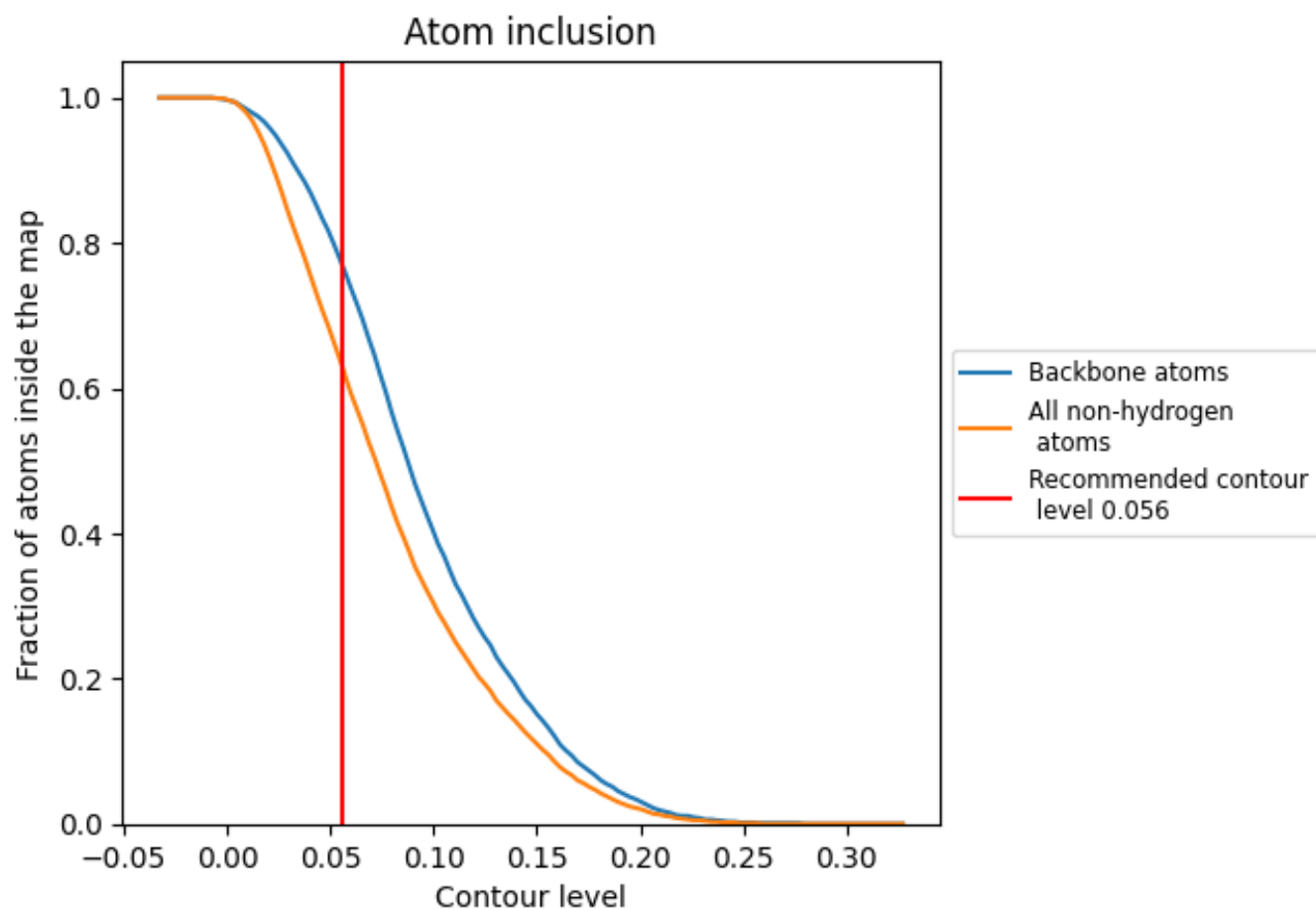
The images above show the model with each residue coloured according to its Q-score. This shows their resolvability in the map with higher Q-score values reflecting better resolvability. Please note: Q-score is calculating the resolvability of atoms, and thus high values are only expected at resolutions at which atoms can be resolved. Low Q-score values may therefore be expected for many entries.

9.3 Atom inclusion mapped to coordinate model [i](#)



The images above show the model with each residue coloured according to its atom inclusion. This shows to what extent they are inside the map at the recommended contour level (0.056).






9.4 Atom inclusion [i](#)



At the recommended contour level, 77% of all backbone atoms, 63% of all non-hydrogen atoms, are inside the map.

9.5 Map-model fit summary [i](#)

The table lists the average atom inclusion at the recommended contour level (0.056) and Q-score for the entire model and for each chain.

Chain	Atom inclusion	Q-score
All	 0.6280	 0.3990
A	 0.6320	 0.3970
B	 0.6240	 0.4020

