



Full wwPDB X-ray Structure Validation Report ⓘ

Jun 11, 2024 – 04:13 PM EDT

PDB ID : 6MO1
Title : Structure of dengue virus protease with an allosteric Inhibitor that blocks replication
Authors : Lin, Y.-L.; Hua, Y.; Nie, S.; Wu, J.; Wu, F.; Huo, T.; Yao, Y.; Song, Y.
Deposited on : 2018-10-03
Resolution : 3.00 Å(reported)

This is a Full wwPDB X-ray Structure Validation Report for a publicly released PDB entry.

We welcome your comments at validation@mail.wwpdb.org

A user guide is available at

<https://www.wwpdb.org/validation/2017/XrayValidationReportHelp>

with specific help available everywhere you see the ⓘ symbol.

The types of validation reports are described at

<http://www.wwpdb.org/validation/2017/FAQs#types>.

The following versions of software and data (see [references ⓘ](#)) were used in the production of this report:

MolProbity : 4.02b-467
Mogul : 1.8.5 (274361), CSD as541be (2020)
Xtriage (Phenix) : 1.13
EDS : 2.36.2
buster-report : 1.1.7 (2018)
Percentile statistics : 20191225.v01 (using entries in the PDB archive December 25th 2019)
Refmac : 5.8.0158
CCP4 : 7.0.044 (Gargrove)
Ideal geometry (proteins) : Engh & Huber (2001)
Ideal geometry (DNA, RNA) : Parkinson et al. (1996)
Validation Pipeline (wwPDB-VP) : 2.36.2

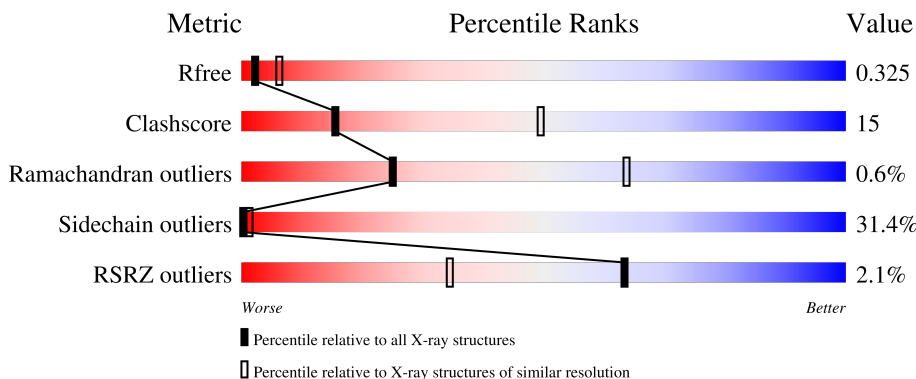
1 Overall quality at a glance

The following experimental techniques were used to determine the structure:

X-RAY DIFFRACTION

The reported resolution of this entry is 3.00 Å.

Percentile scores (ranging between 0-100) for global validation metrics of the entry are shown in the following graphic. The table shows the number of entries on which the scores are based.



Metric	Whole archive (#Entries)	Similar resolution (#Entries, resolution range(Å))
R_{free}	130704	2092 (3.00-3.00)
Clashscore	141614	2416 (3.00-3.00)
Ramachandran outliers	138981	2333 (3.00-3.00)
Sidechain outliers	138945	2336 (3.00-3.00)
RSRZ outliers	127900	1990 (3.00-3.00)

The table below summarises the geometric issues observed across the polymeric chains and their fit to the electron density. The red, orange, yellow and green segments of the lower bar indicate the fraction of residues that contain outliers for ≥ 3 , 2, 1 and 0 types of geometric quality criteria respectively. A grey segment represents the fraction of residues that are not modelled. The numeric value for each fraction is indicated below the corresponding segment, with a dot representing fractions $\leq 5\%$. The upper red bar (where present) indicates the fraction of residues that have poor fit to the electron density. The numeric value is given above the bar.

Mol	Chain	Length	Quality of chain
1	A	247	
1	B	247	

The following table lists non-polymeric compounds, carbohydrate monomers and non-standard residues in protein, DNA, RNA chains that are outliers for geometric or electron-density-fit criteria:

Mol	Type	Chain	Res	Chirality	Geometry	Clashes	Electron density
2	I16	A	1201	-	X	-	-

2 Entry composition i

There are 2 unique types of molecules in this entry. The entry contains 2578 atoms, of which 0 are hydrogens and 0 are deuteriums.

In the tables below, the ZeroOcc column contains the number of atoms modelled with zero occupancy, the AltConf column contains the number of residues with at least one atom in alternate conformation and the Trace column contains the number of residues modelled with at most 2 atoms.

- Molecule 1 is a protein called FLAVIVIRUS_NS2B/Peptidase S7.

Mol	Chain	Residues	Atoms					ZeroOcc	AltConf	Trace
			Total	C	N	O	S			
1	A	164	1256	796	217	240	3	0	0	0
1	B	164	1256	796	217	240	3	0	0	0

There are 32 discrepancies between the modelled and reference sequences:

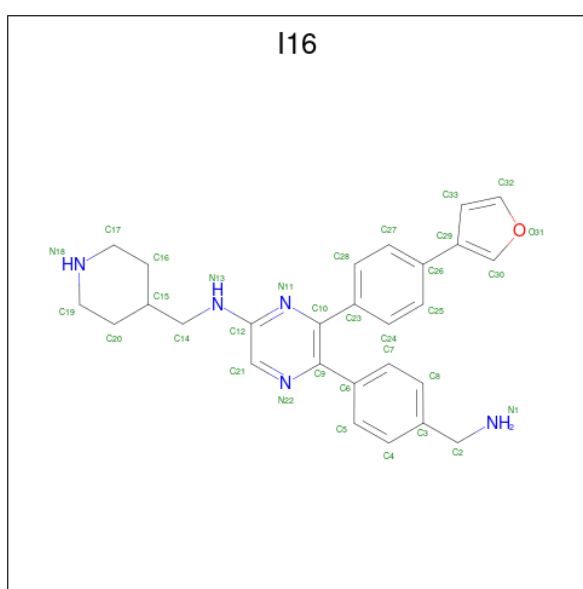
Chain	Residue	Modelled	Actual	Comment	Reference
A	43	GLY	-	expression tag	UNP B3RFT3
A	44	SER	-	expression tag	UNP B3RFT3
A	45	HIS	-	expression tag	UNP B3RFT3
A	46	MET	-	expression tag	UNP B3RFT3
A	47	LEU	-	expression tag	UNP B3RFT3
A	48	MET	-	expression tag	UNP B3RFT3
A	992	GLY	-	linker	UNP B3RFT3
A	993	GLY	-	linker	UNP B3RFT3
A	994	GLY	-	linker	UNP B3RFT3
A	995	GLY	-	linker	UNP B3RFT3
A	996	SER	-	linker	UNP B3RFT3
A	997	GLY	-	linker	UNP B3RFT3
A	998	GLY	-	linker	UNP B3RFT3
A	999	GLY	-	linker	UNP B3RFT3
A	1000	GLY	-	linker	UNP B3RFT3
A	1167	ASN	GLN	conflict	UNP Q91H74
B	43	GLY	-	expression tag	UNP B3RFT3
B	44	SER	-	expression tag	UNP B3RFT3
B	45	HIS	-	expression tag	UNP B3RFT3
B	46	MET	-	expression tag	UNP B3RFT3
B	47	LEU	-	expression tag	UNP B3RFT3
B	48	MET	-	expression tag	UNP B3RFT3
B	992	GLY	-	linker	UNP B3RFT3
B	993	GLY	-	linker	UNP B3RFT3
B	994	GLY	-	linker	UNP B3RFT3

Continued on next page...

Continued from previous page...

Chain	Residue	Modelled	Actual	Comment	Reference
B	995	GLY	-	linker	UNP B3RFT3
B	996	SER	-	linker	UNP B3RFT3
B	997	GLY	-	linker	UNP B3RFT3
B	998	GLY	-	linker	UNP B3RFT3
B	999	GLY	-	linker	UNP B3RFT3
B	1000	GLY	-	linker	UNP B3RFT3
B	1167	ASN	GLN	conflict	UNP Q91H74

- Molecule 2 is 5-[4-(aminomethyl)phenyl]-6-[4-(furan-3-yl)phenyl]-N-[(piperidin-4-yl)methyl] pyrazin-2-amine (three-letter code: I16) (formula: C₂₇H₂₉N₅O).

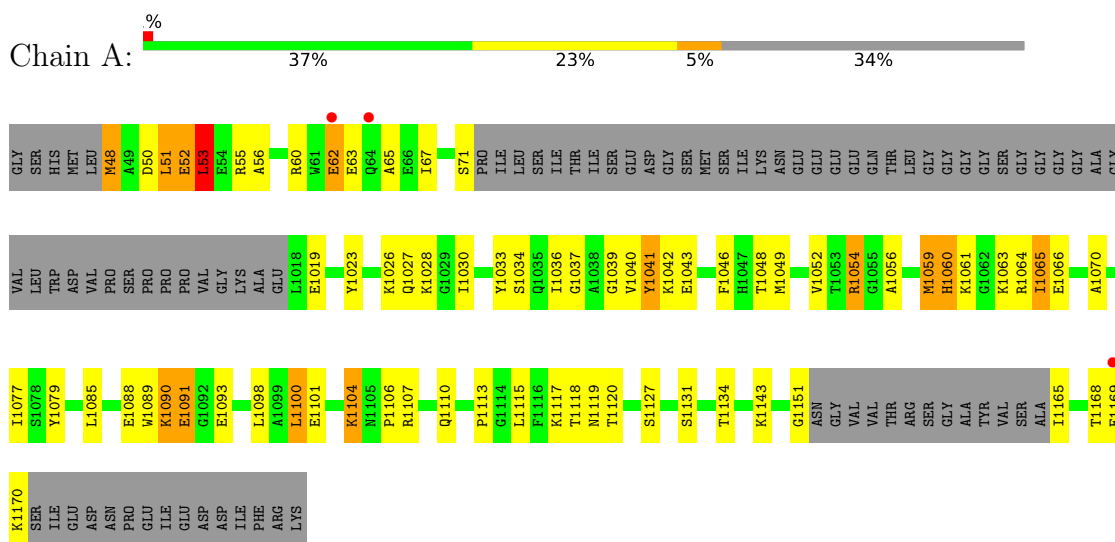


Mol	Chain	Residues	Atoms				ZeroOcc	AltConf
			Total	C	N	O		
2	A	1	33	27	5	1	0	0
2	B	1	33	27	5	1	0	0

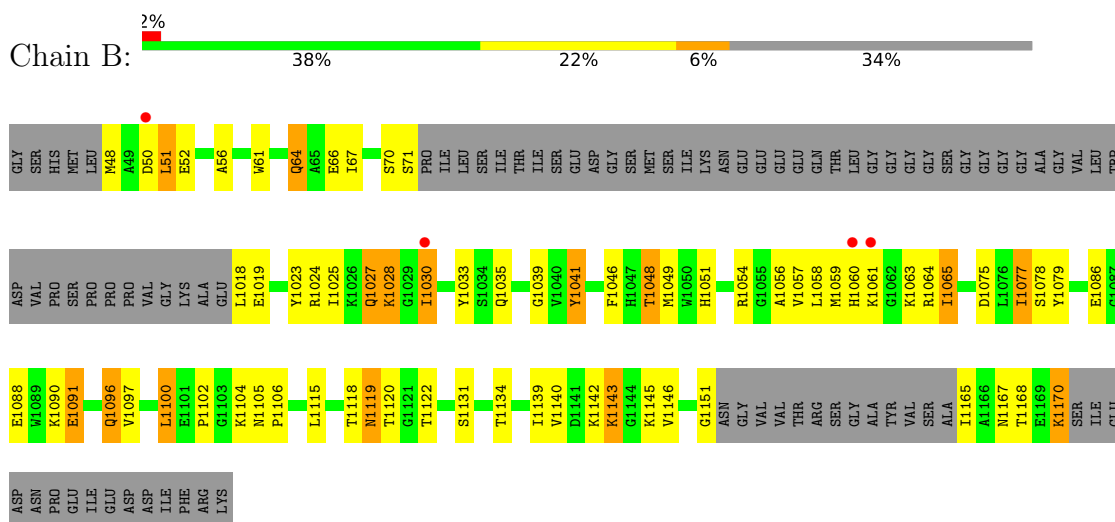
3 Residue-property plots

These plots are drawn for all protein, RNA, DNA and oligosaccharide chains in the entry. The first graphic for a chain summarises the proportions of the various outlier classes displayed in the second graphic. The second graphic shows the sequence view annotated by issues in geometry and electron density. Residues are color-coded according to the number of geometric quality criteria for which they contain at least one outlier: green = 0, yellow = 1, orange = 2 and red = 3 or more. A red dot above a residue indicates a poor fit to the electron density ($RSRZ > 2$). Stretches of 2 or more consecutive residues without any outlier are shown as a green connector. Residues present in the sample, but not in the model, are shown in grey.

• Molecule 1: FLAVIVIRUS_NS2B/Peptidase S7



• Molecule 1: FLAVIVIRUS_NS2B/Peptidase S7



4 Data and refinement statistics i

Property	Value	Source
Space group	P 3 2 1	Depositor
Cell constants a, b, c, α , β , γ	109.33Å 109.33Å 76.25Å 90.00° 90.00° 120.00°	Depositor
Resolution (Å)	47.38 – 3.00 47.34 – 3.00	Depositor EDS
% Data completeness (in resolution range)	99.9 (47.38-3.00) 100.0 (47.34-3.00)	Depositor EDS
R_{merge}	0.45	Depositor
R_{sym}	(Not available)	Depositor
$\langle I/\sigma(I) \rangle$ ¹	3.87 (at 3.01Å)	Xtrriage
Refinement program	REFMAC 5.8.0238	Depositor
R, R_{free}	0.238 , 0.312 0.242 , 0.325	Depositor DCC
R_{free} test set	501 reflections (4.62%)	wwPDB-VP
Wilson B-factor (Å ²)	56.5	Xtrriage
Anisotropy	0.165	Xtrriage
Bulk solvent k_{sol} (e/Å ³), B_{sol} (Å ²)	0.32 , 62.1	EDS
L-test for twinning ²	$\langle L \rangle = 0.48$, $\langle L^2 \rangle = 0.31$	Xtrriage
Estimated twinning fraction	0.037 for -h,-k,l	Xtrriage
F_o, F_c correlation	0.88	EDS
Total number of atoms	2578	wwPDB-VP
Average B, all atoms (Å ²)	63.0	wwPDB-VP

Xtrriage's analysis on translational NCS is as follows: *The largest off-origin peak in the Patterson function is 3.56% of the height of the origin peak. No significant pseudotranslation is detected.*

¹Intensities estimated from amplitudes.

²Theoretical values of $\langle |L| \rangle$, $\langle L^2 \rangle$ for acentric reflections are 0.5, 0.333 respectively for untwinned datasets, and 0.375, 0.2 for perfectly twinned datasets.

5 Model quality [i](#)

5.1 Standard geometry [i](#)

Bond lengths and bond angles in the following residue types are not validated in this section: I16

The Z score for a bond length (or angle) is the number of standard deviations the observed value is removed from the expected value. A bond length (or angle) with $|Z| > 5$ is considered an outlier worth inspection. RMSZ is the root-mean-square of all Z scores of the bond lengths (or angles).

Mol	Chain	Bond lengths		Bond angles	
		RMSZ	# Z >5	RMSZ	# Z >5
1	A	0.76	0/1280	0.83	1/1721 (0.1%)
1	B	0.72	0/1280	0.76	0/1721
All	All	0.74	0/2560	0.79	1/3442 (0.0%)

There are no bond length outliers.

All (1) bond angle outliers are listed below:

Mol	Chain	Res	Type	Atoms	Z	Observed(°)	Ideal(°)
1	A	53	LEU	CB-CA-C	6.54	122.62	110.20

There are no chirality outliers.

There are no planarity outliers.

5.2 Too-close contacts [i](#)

In the following table, the Non-H and H(model) columns list the number of non-hydrogen atoms and hydrogen atoms in the chain respectively. The H(added) column lists the number of hydrogen atoms added and optimized by MolProbity. The Clashes column lists the number of clashes within the asymmetric unit, whereas Symm-Clashes lists symmetry-related clashes.

Mol	Chain	Non-H	H(model)	H(added)	Clashes	Symm-Clashes
1	A	1256	0	1252	36	6
1	B	1256	0	1252	36	5
2	A	33	0	0	7	0
2	B	33	0	0	6	0
All	All	2578	0	2504	75	7

The all-atom clashscore is defined as the number of clashes found per 1000 atoms (including hydrogen atoms). The all-atom clashscore for this structure is 15.

All (75) close contacts within the same asymmetric unit are listed below, sorted by their clash magnitude.

Atom-1	Atom-2	Interatomic distance (Å)	Clash overlap (Å)
1:A:1090:LYS:O	1:A:1091:GLU:HB3	1.80	0.81
1:B:1165:ILE:HD12	2:B:1201:I16:C8	2.20	0.71
1:B:1090:LYS:O	1:B:1091:GLU:HB3	1.91	0.69
1:B:1167:ASN:ND2	1:B:1168:THR:N	2.44	0.66
1:A:53:LEU:HD12	1:A:53:LEU:O	1.97	0.65
1:A:1101:GLU:HB2	1:A:1104:LYS:HB2	1.81	0.63
2:B:1201:I16:C28	2:B:1201:I16:C7	2.76	0.62
1:B:1097:VAL:HG22	1:B:1139:ILE:HG12	1.81	0.62
1:A:1165:ILE:CG1	2:A:1201:I16:C27	2.79	0.60
1:A:67:ILE:HA	1:A:1110:GLN:HB3	1.84	0.59
1:B:1167:ASN:HD22	1:B:1168:THR:N	2.00	0.59
1:A:53:LEU:HD12	1:A:53:LEU:C	2.23	0.58
1:A:1039:GLY:HA3	1:A:1046:PHE:CZ	2.39	0.57
2:A:1201:I16:C7	2:A:1201:I16:C28	2.83	0.56
1:B:1167:ASN:HD22	1:B:1168:THR:H	1.53	0.55
1:B:50:ASP:O	1:B:1027:GLN:HA	2.07	0.54
1:B:1165:ILE:HG13	2:B:1201:I16:C28	2.37	0.54
1:A:1165:ILE:HG13	2:A:1201:I16:C27	2.38	0.53
1:B:56:ALA:HB1	1:B:1100:LEU:HD11	1.91	0.53
1:A:1165:ILE:HD11	2:A:1201:I16:C27	2.38	0.53
1:A:50:ASP:O	1:A:1027:GLN:HA	2.09	0.52
1:B:1065:ILE:HG22	1:B:1079:TYR:HB3	1.92	0.52
1:A:1089:TRP:CZ2	1:A:1113:PRO:HD2	2.44	0.52
1:B:1119:ASN:OD1	1:B:1119:ASN:N	2.42	0.51
1:B:1049:MET:HE1	1:B:1151:GLY:HA3	1.93	0.50
1:B:1165:ILE:CG1	2:B:1201:I16:C27	2.90	0.50
1:B:1090:LYS:O	1:B:1091:GLU:CB	2.58	0.50
1:A:1165:ILE:HG13	2:A:1201:I16:C28	2.42	0.50
1:A:1065:ILE:O	1:A:1065:ILE:HG22	2.12	0.49
1:B:1100:LEU:CD2	1:B:1106:PRO:HB3	2.43	0.49
1:A:53:LEU:HD11	1:A:1060:HIS:HB2	1.93	0.49
1:B:61:TRP:CE3	1:B:1142:LYS:HA	2.47	0.48
1:A:1165:ILE:HD12	2:A:1201:I16:C8	2.44	0.48
1:B:1143:LYS:HD2	1:B:1145:LYS:HE2	1.96	0.48
1:B:1167:ASN:ND2	1:B:1167:ASN:C	2.68	0.47
1:B:1039:GLY:HA3	1:B:1046:PHE:CZ	2.50	0.47
1:A:51:LEU:HD13	1:A:1056:ALA:HB3	1.97	0.47
1:A:1046:PHE:HB3	1:A:1079:TYR:HB2	1.97	0.47
1:A:1042:LYS:HG2	1:A:1043:GLU:HG3	1.96	0.46
1:B:61:TRP:CE2	1:B:1096:GLN:NE2	2.83	0.46

Continued on next page...

Continued from previous page...

Atom-1	Atom-2	Interatomic distance (Å)	Clash overlap (Å)
1:A:1037:GLY:HA3	1:A:1052:VAL:HG21	1.97	0.46
2:A:1201:I16:C28	2:A:1201:I16:C6	2.94	0.46
1:A:53:LEU:C	1:A:53:LEU:CD1	2.85	0.46
1:A:1090:LYS:O	1:A:1091:GLU:CB	2.58	0.45
1:B:1048:THR:HG23	1:B:1077:ILE:HG23	1.98	0.45
1:B:1170:LYS:HE3	1:B:1170:LYS:HB2	1.81	0.44
1:A:1070:ALA:HB2	1:A:1077:ILE:HG13	2.00	0.44
1:B:51:LEU:HD13	1:B:1056:ALA:HB3	2.00	0.43
1:B:1051:HIS:ND1	1:B:1075:ASP:OD2	2.43	0.43
1:B:1100:LEU:HD13	1:B:1100:LEU:HA	1.74	0.43
1:A:1049:MET:CE	1:A:1151:GLY:HA3	2.49	0.43
1:B:1023:TYR:CE1	1:B:1041:TYR:HB2	2.54	0.43
1:A:1088:GLU:HG3	1:A:1169:GLU:HB3	2.00	0.43
1:B:1165:ILE:HG13	2:B:1201:I16:C27	2.49	0.43
2:B:1201:I16:C28	2:B:1201:I16:C6	2.97	0.43
1:B:1060:HIS:CD2	1:B:1065:ILE:HD11	2.54	0.43
1:A:62:GLU:HB3	1:A:65:ALA:HB2	2.01	0.43
1:B:1019:GLU:O	1:B:1023:TYR:OH	2.28	0.42
1:B:1028:LYS:HB3	1:B:1028:LYS:HE3	1.90	0.42
1:A:53:LEU:HD13	1:A:1023:TYR:CD2	2.54	0.42
1:A:52:GLU:HA	1:A:1059:MET:O	2.20	0.42
1:A:1054:ARG:HE	1:A:1054:ARG:HB2	1.52	0.41
1:A:1090:LYS:HE2	1:A:1093:GLU:HB3	2.00	0.41
1:B:1035:GLN:HB3	1:B:1102:PRO:HB3	2.01	0.41
1:B:1143:LYS:CD	1:B:1145:LYS:HE2	2.50	0.41
1:A:56:ALA:O	1:B:64:GLN:HA	2.21	0.41
1:A:1040:VAL:O	1:A:1040:VAL:HG12	2.20	0.41
1:A:1165:ILE:O	1:A:1165:ILE:HG12	2.20	0.41
1:B:1100:LEU:HD22	1:B:1106:PRO:HB3	2.01	0.41
1:A:1023:TYR:CE1	1:A:1041:TYR:HB2	2.56	0.41
1:A:1088:GLU:O	1:A:1088:GLU:HG2	2.21	0.40
1:A:1100:LEU:H	1:A:1134:THR:HG23	1.87	0.40
1:B:1058:LEU:HB3	1:B:1065:ILE:HG13	2.02	0.40
1:A:1100:LEU:CD1	1:A:1106:PRO:HB3	2.51	0.40
1:B:1165:ILE:O	1:B:1165:ILE:HG12	2.22	0.40

All (7) symmetry-related close contacts are listed below. The label for Atom-2 includes the symmetry operator and encoded unit-cell translations to be applied.

Atom-1	Atom-2	Interatomic distance (Å)	Clash overlap (Å)
1:A:48:MET:N	1:A:71:SER:OG[2_565]	1.12	1.08

Continued on next page...

Continued from previous page...

Atom-1	Atom-2	Interatomic distance (Å)	Clash overlap (Å)
1:A:1169:GLU:OE2	1:B:1030:ILE:CD1[6_455]	1.49	0.71
1:A:1169:GLU:CD	1:B:1030:ILE:CG1[6_455]	1.68	0.52
1:A:1169:GLU:CD	1:B:1030:ILE:CD1[6_455]	1.68	0.52
1:A:1169:GLU:OE1	1:B:1030:ILE:CG1[6_455]	1.75	0.45
1:B:48:MET:N	1:B:71:SER:OG[3_445]	1.85	0.35
1:A:1143:LYS:CG	1:A:1143:LYS:CG[5_555]	2.15	0.05

5.3 Torsion angles [i](#)

5.3.1 Protein backbone [i](#)

In the following table, the Percentiles column shows the percent Ramachandran outliers of the chain as a percentile score with respect to all X-ray entries followed by that with respect to entries of similar resolution.

The Analysed column shows the number of residues for which the backbone conformation was analysed, and the total number of residues.

Mol	Chain	Analysed	Favoured	Allowed	Outliers	Percentiles	
1	A	158/247 (64%)	147 (93%)	9 (6%)	2 (1%)	12	45
1	B	158/247 (64%)	147 (93%)	11 (7%)	0	100	100
All	All	316/494 (64%)	294 (93%)	20 (6%)	2 (1%)	25	64

All (2) Ramachandran outliers are listed below:

Mol	Chain	Res	Type
1	A	1091	GLU
1	A	1019	GLU

5.3.2 Protein sidechains [i](#)

In the following table, the Percentiles column shows the percent sidechain outliers of the chain as a percentile score with respect to all X-ray entries followed by that with respect to entries of similar resolution.

The Analysed column shows the number of residues for which the sidechain conformation was analysed, and the total number of residues.

Mol	Chain	Analysed	Rotameric	Outliers	Percentiles	
1	A	129/194 (66%)	90 (70%)	39 (30%)	0	1

Continued on next page...

Continued from previous page...

Mol	Chain	Analysed	Rotameric	Outliers	Percentiles	
1	B	129/194 (66%)	87 (67%)	42 (33%)	0	1
All	All	258/388 (66%)	177 (69%)	81 (31%)	0	1

All (81) residues with a non-rotameric sidechain are listed below:

Mol	Chain	Res	Type
1	A	48	MET
1	A	51	LEU
1	A	52	GLU
1	A	53	LEU
1	A	55	ARG
1	A	60	ARG
1	A	62	GLU
1	A	63	GLU
1	A	1026	LYS
1	A	1028	LYS
1	A	1030	ILE
1	A	1033	TYR
1	A	1034	SER
1	A	1036	ILE
1	A	1041	TYR
1	A	1048	THR
1	A	1054	ARG
1	A	1059	MET
1	A	1060	HIS
1	A	1061	LYS
1	A	1063	LYS
1	A	1064	ARG
1	A	1065	ILE
1	A	1066	GLU
1	A	1085	LEU
1	A	1090	LYS
1	A	1098	LEU
1	A	1100	LEU
1	A	1104	LYS
1	A	1107	ARG
1	A	1115	LEU
1	A	1117	LYS
1	A	1118	THR
1	A	1119	ASN
1	A	1120	THR
1	A	1127	SER

Continued on next page...

Continued from previous page...

Mol	Chain	Res	Type
1	A	1131	SER
1	A	1168	THR
1	A	1170	LYS
1	B	51	LEU
1	B	52	GLU
1	B	64	GLN
1	B	66	GLU
1	B	67	ILE
1	B	70	SER
1	B	1018	LEU
1	B	1024	ARG
1	B	1025	ILE
1	B	1027	GLN
1	B	1028	LYS
1	B	1030	ILE
1	B	1033	TYR
1	B	1041	TYR
1	B	1048	THR
1	B	1054	ARG
1	B	1057	VAL
1	B	1059	MET
1	B	1061	LYS
1	B	1063	LYS
1	B	1064	ARG
1	B	1065	ILE
1	B	1077	ILE
1	B	1078	SER
1	B	1086	GLU
1	B	1088	GLU
1	B	1091	GLU
1	B	1096	GLN
1	B	1100	LEU
1	B	1104	LYS
1	B	1105	ASN
1	B	1115	LEU
1	B	1118	THR
1	B	1119	ASN
1	B	1120	THR
1	B	1122	THR
1	B	1131	SER
1	B	1134	THR
1	B	1140	VAL

Continued on next page...

Continued from previous page...

Mol	Chain	Res	Type
1	B	1143	LYS
1	B	1146	VAL
1	B	1170	LYS

Sometimes sidechains can be flipped to improve hydrogen bonding and reduce clashes. All (5) such sidechains are listed below:

Mol	Chain	Res	Type
1	A	1060	HIS
1	B	64	GLN
1	B	1060	HIS
1	B	1105	ASN
1	B	1167	ASN

5.3.3 RNA [i](#)

There are no RNA molecules in this entry.

5.4 Non-standard residues in protein, DNA, RNA chains [i](#)

There are no non-standard protein/DNA/RNA residues in this entry.

5.5 Carbohydrates [i](#)

There are no monosaccharides in this entry.

5.6 Ligand geometry [i](#)

2 ligands are modelled in this entry.

In the following table, the Counts columns list the number of bonds (or angles) for which Mogul statistics could be retrieved, the number of bonds (or angles) that are observed in the model and the number of bonds (or angles) that are defined in the Chemical Component Dictionary. The Link column lists molecule types, if any, to which the group is linked. The Z score for a bond length (or angle) is the number of standard deviations the observed value is removed from the expected value. A bond length (or angle) with $|Z| > 2$ is considered an outlier worth inspection. RMSZ is the root-mean-square of all Z scores of the bond lengths (or angles).

Mol	Type	Chain	Res	Link	Bond lengths			Bond angles		
					Counts	RMSZ	# Z > 2	Counts	RMSZ	# Z > 2
2	I16	A	1201	-	34,37,37	3.91	24 (70%)	45,50,50	2.37	20 (44%)

Mol	Type	Chain	Res	Link	Bond lengths			Bond angles		
					Counts	RMSZ	# Z > 2	Counts	RMSZ	# Z > 2
2	I16	B	1201	-	34,37,37	3.90	23 (67%)	45,50,50	2.48	18 (40%)

In the following table, the Chirals column lists the number of chiral outliers, the number of chiral centers analysed, the number of these observed in the model and the number defined in the Chemical Component Dictionary. Similar counts are reported in the Torsion and Rings columns. '-' means no outliers of that kind were identified.

Mol	Type	Chain	Res	Link	Chirals	Torsions	Rings
2	I16	A	1201	-	-	5/19/27/27	0/5/5/5
2	I16	B	1201	-	-	6/19/27/27	0/5/5/5

All (47) bond length outliers are listed below:

Mol	Chain	Res	Type	Atoms	Z	Observed(Å)	Ideal(Å)
2	B	1201	I16	C30-C29	13.87	1.53	1.37
2	A	1201	I16	C30-C29	10.41	1.49	1.37
2	A	1201	I16	C10-N11	8.71	1.48	1.34
2	A	1201	I16	C23-C10	7.32	1.57	1.49
2	B	1201	I16	C27-C28	7.08	1.51	1.38
2	A	1201	I16	C27-C28	6.12	1.49	1.38
2	B	1201	I16	C9-N22	5.38	1.44	1.34
2	B	1201	I16	C10-N11	5.25	1.42	1.34
2	B	1201	I16	C6-C9	-5.06	1.43	1.49
2	B	1201	I16	C24-C23	5.05	1.50	1.39
2	A	1201	I16	C24-C23	4.63	1.49	1.39
2	A	1201	I16	C4-C5	4.59	1.47	1.38
2	A	1201	I16	C21-N22	4.43	1.43	1.34
2	A	1201	I16	C9-N22	4.17	1.42	1.34
2	A	1201	I16	C24-C25	4.09	1.46	1.38
2	A	1201	I16	C12-N11	3.97	1.42	1.34
2	B	1201	I16	C14-N13	3.82	1.53	1.45
2	B	1201	I16	C21-N22	3.82	1.42	1.34
2	A	1201	I16	C27-C26	3.74	1.47	1.39
2	A	1201	I16	C33-C29	3.60	1.47	1.42
2	B	1201	I16	C24-C25	3.53	1.45	1.38
2	B	1201	I16	C27-C26	3.49	1.46	1.39
2	B	1201	I16	C14-C15	3.42	1.58	1.51
2	A	1201	I16	C4-C3	3.39	1.46	1.38
2	B	1201	I16	C33-C29	3.38	1.47	1.42
2	A	1201	I16	C8-C3	3.35	1.46	1.38
2	B	1201	I16	C7-C8	3.18	1.44	1.38
2	B	1201	I16	C12-N13	3.13	1.40	1.36

Continued on next page...

Continued from previous page...

Mol	Chain	Res	Type	Atoms	Z	Observed(Å)	Ideal(Å)
2	A	1201	I16	C20-C15	2.92	1.60	1.52
2	A	1201	I16	C28-C23	2.86	1.45	1.39
2	B	1201	I16	C8-C3	2.81	1.44	1.38
2	A	1201	I16	C14-N13	2.78	1.51	1.45
2	A	1201	I16	C19-N18	2.74	1.57	1.47
2	B	1201	I16	C21-C12	2.73	1.47	1.41
2	B	1201	I16	C25-C26	2.63	1.44	1.39
2	A	1201	I16	C25-C26	2.59	1.44	1.39
2	A	1201	I16	C14-C15	2.57	1.56	1.51
2	A	1201	I16	C7-C8	2.56	1.43	1.38
2	B	1201	I16	C5-C6	2.52	1.44	1.39
2	A	1201	I16	C12-N13	2.50	1.40	1.36
2	A	1201	I16	C7-C6	2.46	1.44	1.39
2	B	1201	I16	C4-C5	2.31	1.43	1.38
2	B	1201	I16	C16-C17	2.31	1.60	1.52
2	B	1201	I16	C20-C15	2.26	1.58	1.52
2	B	1201	I16	C19-N18	2.25	1.55	1.47
2	B	1201	I16	C12-N11	2.21	1.38	1.34
2	A	1201	I16	C5-C6	2.01	1.43	1.39

All (38) bond angle outliers are listed below:

Mol	Chain	Res	Type	Atoms	Z	Observed(°)	Ideal(°)
2	B	1201	I16	C8-C7-C6	-6.41	111.91	121.13
2	B	1201	I16	C5-C4-C3	-4.89	114.30	121.03
2	B	1201	I16	C5-C6-C9	-4.80	113.00	120.61
2	A	1201	I16	C14-N13-C12	-4.71	114.76	123.36
2	A	1201	I16	C23-C10-N11	4.67	121.29	115.09
2	A	1201	I16	C5-C4-C3	-4.14	115.33	121.03
2	B	1201	I16	C14-N13-C12	-4.09	115.89	123.36
2	A	1201	I16	C12-C21-N22	-4.06	117.61	122.41
2	B	1201	I16	C6-C9-C10	-4.04	118.23	124.20
2	B	1201	I16	C5-C6-C7	4.02	125.61	117.59
2	A	1201	I16	C27-C26-C29	-3.86	114.66	121.36
2	A	1201	I16	C16-C15-C14	-3.80	103.41	111.47
2	B	1201	I16	C23-C10-C9	3.74	129.73	124.20
2	A	1201	I16	C5-C6-C7	3.71	124.99	117.59
2	A	1201	I16	C8-C7-C6	-3.63	115.91	121.13
2	B	1201	I16	C20-C15-C14	-3.60	103.82	111.47
2	B	1201	I16	C10-C9-N22	3.42	126.41	120.86
2	A	1201	I16	C4-C3-C8	3.34	123.41	118.17
2	A	1201	I16	C15-C14-N13	-3.27	106.88	112.82

Continued on next page...

Continued from previous page...

Mol	Chain	Res	Type	Atoms	Z	Observed(°)	Ideal(°)
2	B	1201	I16	C9-C10-N11	-3.24	115.67	120.05
2	B	1201	I16	C16-C17-N18	3.18	117.08	110.64
2	B	1201	I16	C27-C28-C23	-3.11	116.66	121.13
2	B	1201	I16	C3-C2-N1	-3.07	99.39	115.47
2	A	1201	I16	N13-C12-N11	3.04	121.55	116.43
2	A	1201	I16	C9-C10-N11	-3.00	115.99	120.05
2	A	1201	I16	C19-C20-C15	-2.84	107.74	112.14
2	A	1201	I16	C7-C6-C9	-2.78	116.20	120.61
2	A	1201	I16	C25-C24-C23	2.64	124.93	121.13
2	A	1201	I16	C25-C26-C29	2.64	125.92	121.36
2	B	1201	I16	C4-C3-C8	2.54	122.16	118.17
2	A	1201	I16	C21-N22-C9	2.40	122.29	117.95
2	A	1201	I16	C3-C2-N1	-2.25	103.66	115.47
2	B	1201	I16	C23-C10-N11	-2.22	112.14	115.09
2	B	1201	I16	C16-C15-C20	-2.21	103.93	109.33
2	B	1201	I16	C7-C8-C3	2.18	124.03	121.03
2	A	1201	I16	C24-C25-C26	-2.18	118.00	121.13
2	A	1201	I16	C17-C16-C15	-2.08	108.92	112.14
2	B	1201	I16	C12-C21-N22	-2.08	119.95	122.41

There are no chirality outliers.

All (11) torsion outliers are listed below:

Mol	Chain	Res	Type	Atoms
2	A	1201	I16	N13-C14-C15-C16
2	B	1201	I16	N13-C14-C15-C16
2	A	1201	I16	C9-C10-C23-C24
2	B	1201	I16	C9-C10-C23-C24
2	A	1201	I16	C9-C10-C23-C28
2	A	1201	I16	N11-C10-C23-C24
2	B	1201	I16	C15-C14-N13-C12
2	A	1201	I16	N13-C14-C15-C20
2	B	1201	I16	N13-C14-C15-C20
2	B	1201	I16	C27-C26-C29-C30
2	B	1201	I16	C9-C10-C23-C28

There are no ring outliers.

2 monomers are involved in 13 short contacts:

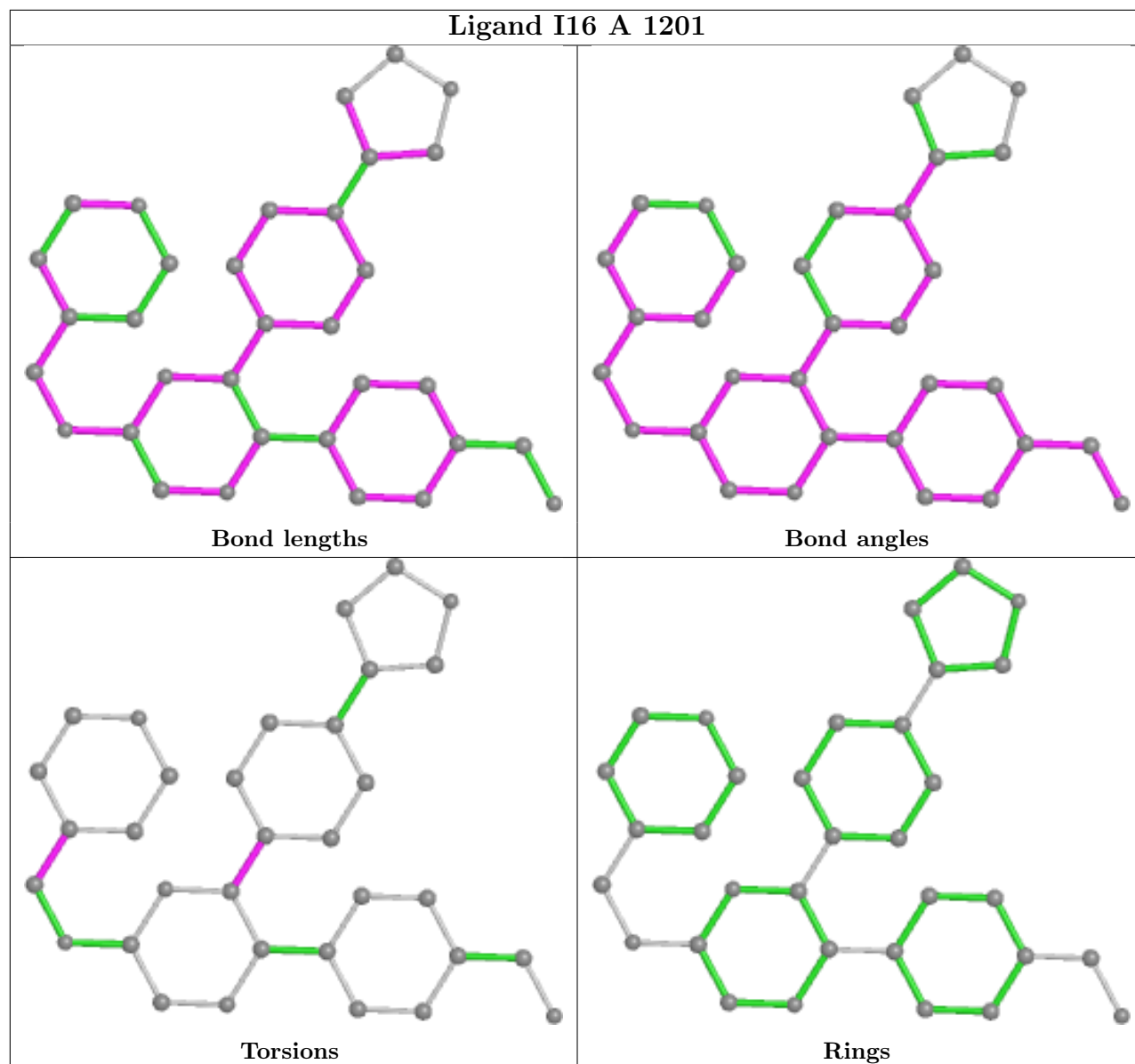
Mol	Chain	Res	Type	Clashes	Symm-Clashes
2	A	1201	I16	7	0

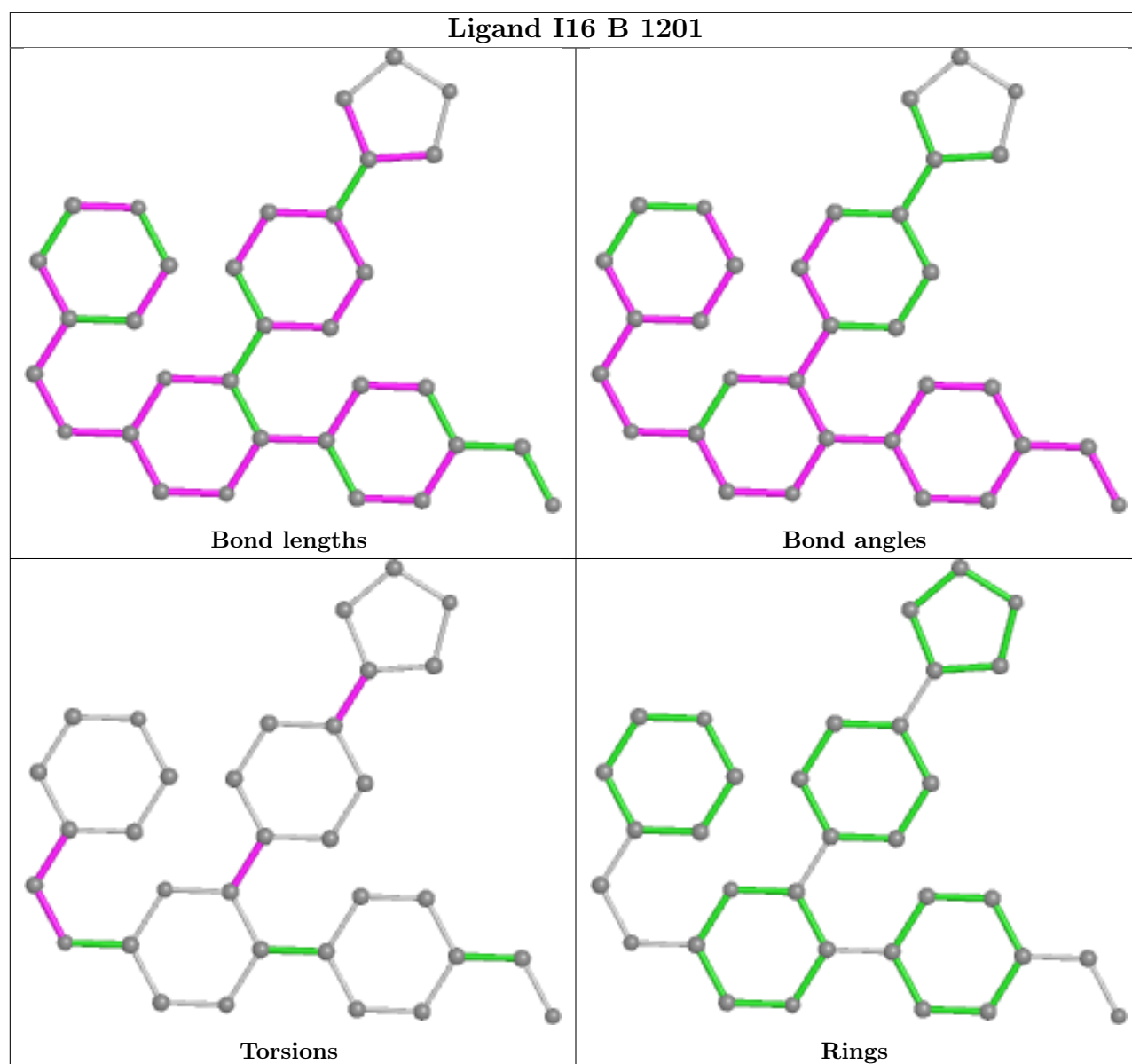
Continued on next page...

Continued from previous page...

Mol	Chain	Res	Type	Clashes	Symm-Clashes
2	B	1201	I16	6	0

The following is a two-dimensional graphical depiction of Mogul quality analysis of bond lengths, bond angles, torsion angles, and ring geometry for all instances of the Ligand of Interest. In addition, ligands with molecular weight > 250 and outliers as shown on the validation Tables will also be included. For torsion angles, if less than 5% of the Mogul distribution of torsion angles is within 10 degrees of the torsion angle in question, then that torsion angle is considered an outlier. Any bond that is central to one or more torsion angles identified as an outlier by Mogul will be highlighted in the graph. For rings, the root-mean-square deviation (RMSD) between the ring in question and similar rings identified by Mogul is calculated over all ring torsion angles. If the average RMSD is greater than 60 degrees and the minimal RMSD between the ring in question and any Mogul-identified rings is also greater than 60 degrees, then that ring is considered an outlier. The outliers are highlighted in purple. The color gray indicates Mogul did not find sufficient equivalents in the CSD to analyse the geometry.





5.7 Other polymers [i](#)

There are no such residues in this entry.

5.8 Polymer linkage issues [i](#)

There are no chain breaks in this entry.

6 Fit of model and data [i](#)

6.1 Protein, DNA and RNA chains [i](#)

In the following table, the column labelled ‘#RSRZ> 2’ contains the number (and percentage) of RSRZ outliers, followed by percent RSRZ outliers for the chain as percentile scores relative to all X-ray entries and entries of similar resolution. The OWAB column contains the minimum, median, 95th percentile and maximum values of the occupancy-weighted average B-factor per residue. The column labelled ‘Q< 0.9’ lists the number of (and percentage) of residues with an average occupancy less than 0.9.

Mol	Chain	Analysed	<RSRZ>	#RSRZ>2	OWAB(Å ²)	Q<0.9
1	A	164/247 (66%)	-0.07	3 (1%) 68 40	41, 58, 99, 113	0
1	B	164/247 (66%)	-0.14	4 (2%) 59 30	41, 59, 99, 123	0
All	All	328/494 (66%)	-0.10	7 (2%) 63 34	41, 59, 101, 123	0

All (7) RSRZ outliers are listed below:

Mol	Chain	Res	Type	RSRZ
1	B	1030	ILE	3.3
1	A	1169	GLU	3.2
1	A	62	GLU	3.1
1	B	1060	HIS	2.5
1	B	1061	LYS	2.5
1	B	50	ASP	2.2
1	A	64	GLN	2.0

6.2 Non-standard residues in protein, DNA, RNA chains [i](#)

There are no non-standard protein/DNA/RNA residues in this entry.

6.3 Carbohydrates [i](#)

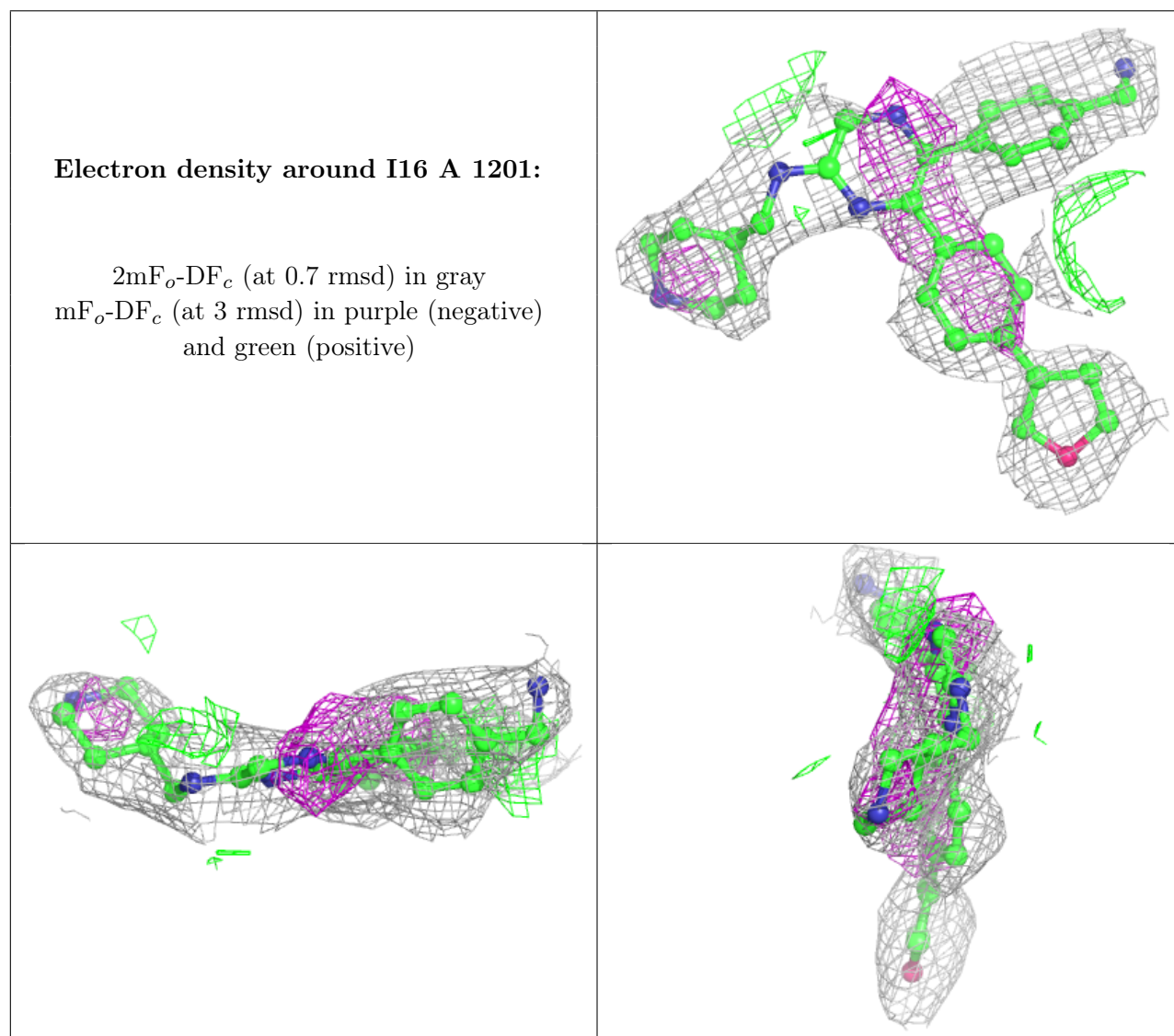
There are no monosaccharides in this entry.

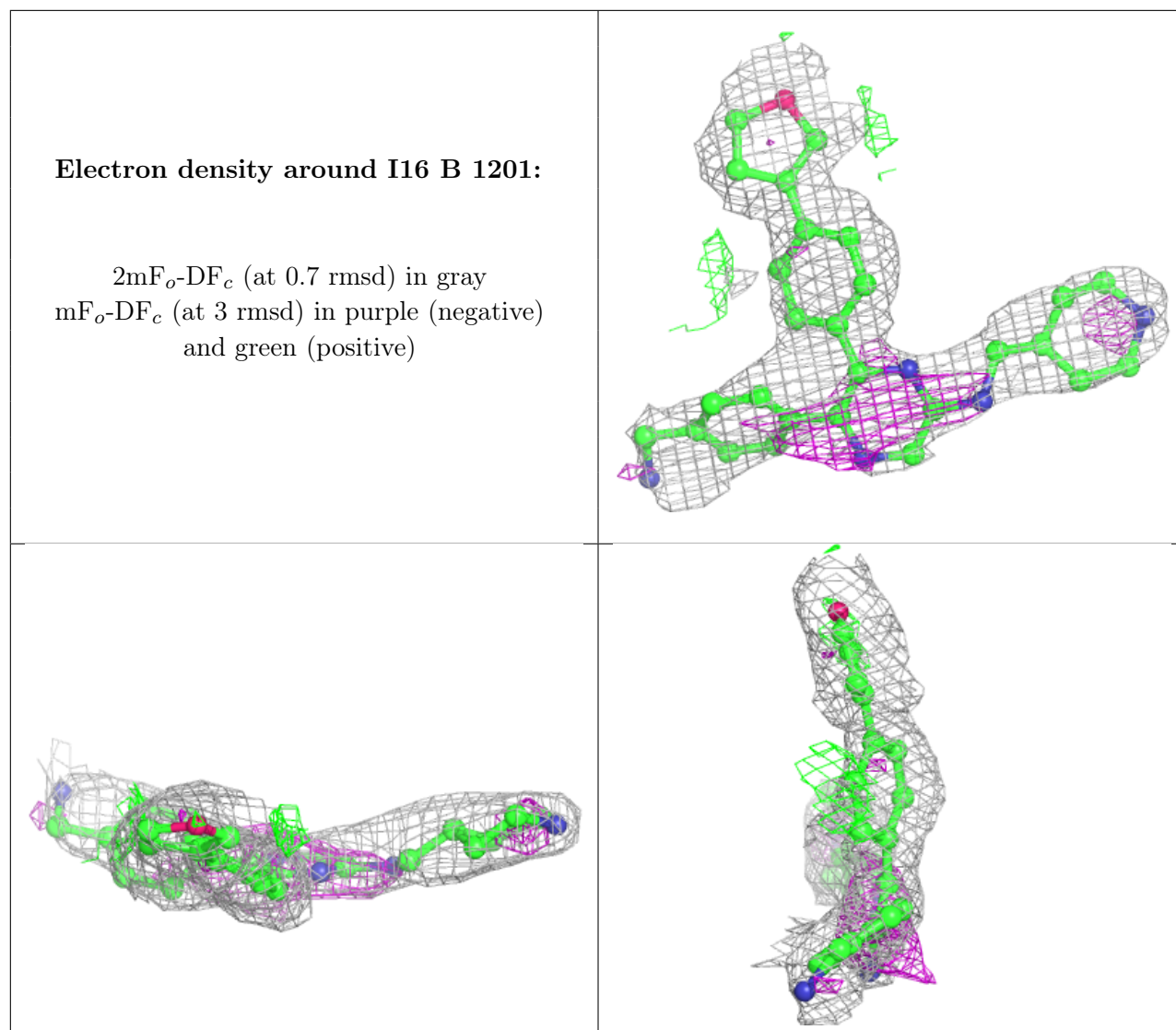
6.4 Ligands [i](#)

In the following table, the Atoms column lists the number of modelled atoms in the group and the number defined in the chemical component dictionary. The B-factors column lists the minimum, median, 95th percentile and maximum values of B factors of atoms in the group. The column labelled ‘Q< 0.9’ lists the number of atoms with occupancy less than 0.9.

Mol	Type	Chain	Res	Atoms	RSCC	RSR	B-factors(\AA^2)	Q<0.9
2	I16	A	1201	33/33	0.78	0.31	18,22,26,27	0
2	I16	B	1201	33/33	0.81	0.32	17,23,28,32	0

The following is a graphical depiction of the model fit to experimental electron density of all instances of the Ligand of Interest. In addition, ligands with molecular weight > 250 and outliers as shown on the geometry validation Tables will also be included. Each fit is shown from different orientation to approximate a three-dimensional view.





6.5 Other polymers [i](#)

There are no such residues in this entry.