



## Full wwPDB EM Validation Report ⓘ

Mar 5, 2024 – 11:04 AM EST

PDB ID : 6MLQ  
EMDB ID : EMD-9140  
Title : Cryo-EM structure of microtubule-bound Kif7 in the ADP state  
Authors : Mani, N.; Jiang, S.; Wilson-Kubalek, E.M.; Ku, P.; Milligan, R.A.; Subramanian, R.  
Deposited on : 2018-09-27  
Resolution : 4.20 Å(reported)  
Based on initial models : 4A14, 3J6G

This is a Full wwPDB EM Validation Report for a publicly released PDB entry.

We welcome your comments at [validation@mail.wwpdb.org](mailto:validation@mail.wwpdb.org)

A user guide is available at

<https://www.wwpdb.org/validation/2017/EMValidationReportHelp>

with specific help available everywhere you see the ⓘ symbol.

The types of validation reports are described at

<http://www.wwpdb.org/validation/2017/FAQs#types>.

---

The following versions of software and data (see [references ⓘ](#)) were used in the production of this report:

EMDB validation analysis : 0.0.1.dev70  
Mogul : 1.8.5 (274361), CSD as541be (2020)  
MolProbity : 4.02b-467  
buster-report : 1.1.7 (2018)  
Percentile statistics : 20191225.v01 (using entries in the PDB archive December 25th 2019)  
MapQ : 1.9.13  
Ideal geometry (proteins) : Engh & Huber (2001)  
Ideal geometry (DNA, RNA) : Parkinson et al. (1996)  
Validation Pipeline (wwPDB-VP) : 2.36

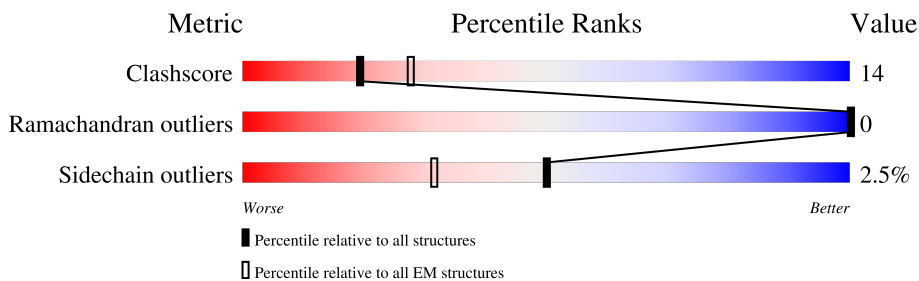
# 1 Overall quality at a glance

The following experimental techniques were used to determine the structure:

*ELECTRON MICROSCOPY*

The reported resolution of this entry is 4.20 Å.

Percentile scores (ranging between 0-100) for global validation metrics of the entry are shown in the following graphic. The table shows the number of entries on which the scores are based.



Metric	Whole archive (#Entries)	EM structures (#Entries)
Clashscore	158937	4297
Ramachandran outliers	154571	4023
Sidechain outliers	154315	3826

The table below summarises the geometric issues observed across the polymeric chains and their fit to the map. The red, orange, yellow and green segments of the bar indicate the fraction of residues that contain outliers for  $\geq 3$ , 2, 1 and 0 types of geometric quality criteria respectively. A grey segment represents the fraction of residues that are not modelled. The numeric value for each fraction is indicated below the corresponding segment, with a dot representing fractions  $\leq 5\%$ . The upper red bar (where present) indicates the fraction of residues that have poor fit to the EM map (all-atom inclusion  $< 40\%$ ). The numeric value is given above the bar.

Mol	Chain	Length	Quality of chain
1	A	451	 75% 16% 9%
2	B	445	 73% 21% ••
3	C	399	 9% 63% 18% • 18%

## 2 Entry composition [i](#)

There are 8 unique types of molecules in this entry. The entry contains 9197 atoms, of which 0 are hydrogens and 0 are deuteriums.

In the tables below, the AltConf column contains the number of residues with at least one atom in alternate conformation and the Trace column contains the number of residues modelled with at most 2 atoms.

- Molecule 1 is a protein called Tubulin alpha-1A chain.

Mol	Chain	Residues	Atoms					AltConf	Trace
			Total	C	N	O	S		
1	A	411	3224	2042	550	612	20	0	0

- Molecule 2 is a protein called Tubulin beta chain.

Mol	Chain	Residues	Atoms					AltConf	Trace
			Total	C	N	O	S		
2	B	426	3351	2105	575	646	25	0	0

- Molecule 3 is a protein called Kinesin-like protein KIF7.

Mol	Chain	Residues	Atoms					AltConf	Trace
			Total	C	N	O	S		
3	C	327	2471	1547	435	480	9	0	0

There is a discrepancy between the modelled and reference sequences:

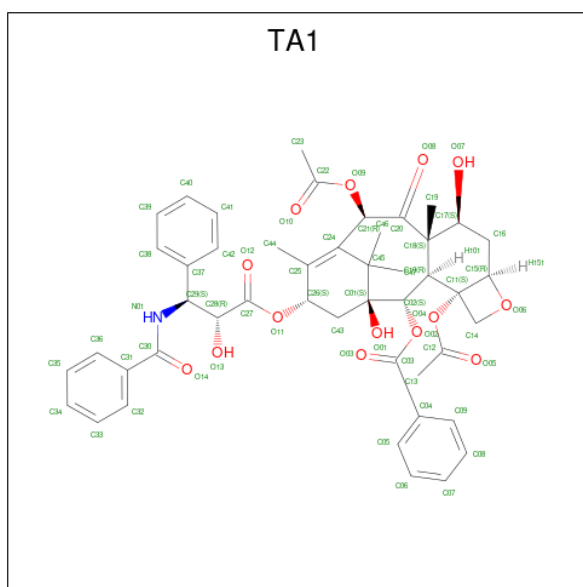
Chain	Residue	Modelled	Actual	Comment	Reference
C	0	GLY	-	expression tag	UNP Q2M1P5

- Molecule 4 is MAGNESIUM ION (three-letter code: MG) (formula: Mg).

Mol	Chain	Residues	Atoms		AltConf
4	A	1	Total	Mg	0
			1	1	
4	C	1	Total	Mg	0
			1	1	

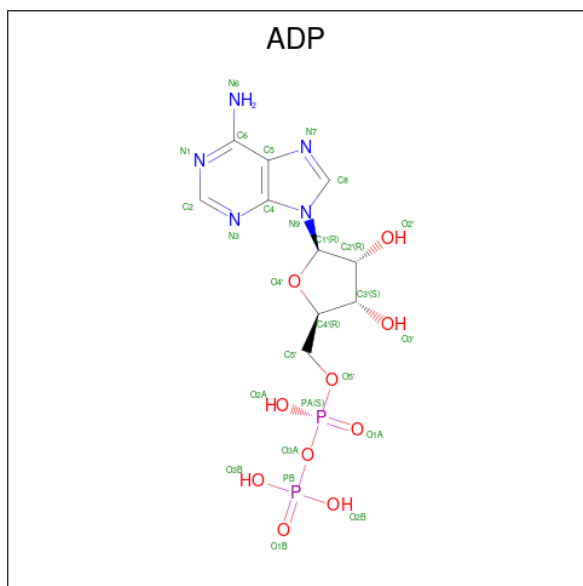
- Molecule 5 is GUANOSINE-5'-TRIPHOSPHATE (three-letter code: GTP) (formula: C<sub>10</sub>H<sub>16</sub>N<sub>5</sub>O<sub>14</sub>P<sub>3</sub>).





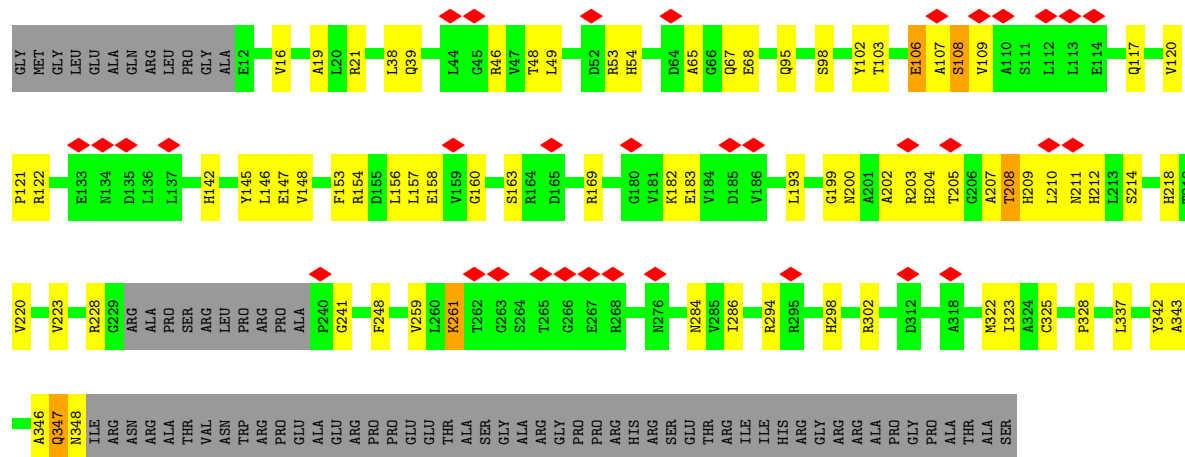
Mol	Chain	Residues	Atoms				AltConf
			Total	C	N	O	
7	B	1	62	47	1	14	0

- Molecule 8 is ADENOSINE-5'-DIPHOSPHATE (three-letter code: ADP) (formula:  $C_{10}H_{15}N_5O_{10}P_2$ ).



Mol	Chain	Residues	Atoms					AltConf
			Total	C	N	O	P	
8	C	1	27	10	5	10	2	0





## 4 Experimental information

Property	Value	Source
EM reconstruction method	HELICAL	Depositor
Imposed symmetry	HELICAL, twist=-23.84°, rise=11.11 Å, axial sym=C1	Depositor
Number of segments used	15919	Depositor
Resolution determination method	FSC 0.143 CUT-OFF	Depositor
CTF correction method	PHASE FLIPPING ONLY	Depositor
Microscope	FEI TITAN KRIOS	Depositor
Voltage (kV)	300	Depositor
Electron dose ( $e^-/\text{Å}^2$ )	37	Depositor
Minimum defocus (nm)	Not provided	
Maximum defocus (nm)	Not provided	
Magnification	Not provided	
Image detector	GATAN K2 SUMMIT (4k x 4k)	Depositor
Maximum map value	0.126	Depositor
Minimum map value	-0.065	Depositor
Average map value	0.003	Depositor
Map value standard deviation	0.012	Depositor
Recommended contour level	0.017	Depositor
Map size (Å)	79.909996, 167.68, 112.659996	wwPDB
Map dimensions	61, 128, 86	wwPDB
Map angles (°)	90.0, 90.0, 90.0	wwPDB
Pixel spacing (Å)	1.31, 1.31, 1.31	Depositor



## 5 Model quality [i](#)

### 5.1 Standard geometry [i](#)

Bond lengths and bond angles in the following residue types are not validated in this section: TA1, ADP, GTP, GDP, MG

The Z score for a bond length (or angle) is the number of standard deviations the observed value is removed from the expected value. A bond length (or angle) with  $|Z| > 5$  is considered an outlier worth inspection. RMSZ is the root-mean-square of all Z scores of the bond lengths (or angles).

Mol	Chain	Bond lengths		Bond angles	
		RMSZ	# Z  >5	RMSZ	# Z  >5
1	A	0.34	0/3297	0.60	0/4479
2	B	0.34	0/3426	0.57	0/4642
3	C	0.27	0/2509	0.54	0/3396
All	All	0.32	0/9232	0.57	0/12517

Chiral center outliers are detected by calculating the chiral volume of a chiral center and verifying if the center is modelled as a planar moiety or with the opposite hand. A planarity outlier is detected by checking planarity of atoms in a peptide group, atoms in a mainchain group or atoms of a sidechain that are expected to be planar.

Mol	Chain	#Chirality outliers	#Planarity outliers
1	A	0	3
2	B	0	4
3	C	0	1
All	All	0	8

There are no bond length outliers.

There are no bond angle outliers.

There are no chirality outliers.

All (8) planarity outliers are listed below:

Mol	Chain	Res	Type	Group
1	A	238	ILE	Peptide
1	A	244	PHE	Peptide
1	A	368	LEU	Peptide
2	B	183	GLU	Peptide
2	B	264	ARG	Peptide
2	B	265	LEU	Peptide
2	B	343	PHE	Peptide

*Continued on next page...*

*Continued from previous page...*

Mol	Chain	Res	Type	Group
3	C	261	LYS	Peptide

## 5.2 Too-close contacts [i](#)

In the following table, the Non-H and H(model) columns list the number of non-hydrogen atoms and hydrogen atoms in the chain respectively. The H(added) column lists the number of hydrogen atoms added and optimized by MolProbity. The Clashes column lists the number of clashes within the asymmetric unit, whereas Symm-Clashes lists symmetry-related clashes.

Mol	Chain	Non-H	H(model)	H(added)	Clashes	Symm-Clashes
1	A	3224	0	3141	47	0
2	B	3351	0	3229	93	0
3	C	2471	0	2420	120	0
4	A	1	0	0	0	0
4	C	1	0	0	0	0
5	A	32	0	12	0	0
6	B	28	0	12	0	0
7	B	62	0	51	4	0
8	C	27	0	12	1	0
All	All	9197	0	8877	255	0

The all-atom clashscore is defined as the number of clashes found per 1000 atoms (including hydrogen atoms). The all-atom clashscore for this structure is 14.

All (255) close contacts within the same asymmetric unit are listed below, sorted by their clash magnitude.

Atom-1	Atom-2	Interatomic distance (Å)	Clash overlap (Å)
3:C:322:MET:CE	3:C:347:GLN:HG3	1.27	1.59
3:C:322:MET:HE1	3:C:347:GLN:CG	1.11	1.58
3:C:322:MET:HE1	3:C:347:GLN:CB	1.43	1.47
3:C:107:ALA:CB	3:C:193:LEU:CD2	1.99	1.36
3:C:107:ALA:HB2	3:C:193:LEU:CD2	1.55	1.35
2:B:288:VAL:HG23	2:B:289:PRO:CD	1.57	1.33
2:B:288:VAL:HG11	2:B:323:MET:CE	1.60	1.30
3:C:322:MET:CE	3:C:347:GLN:CB	2.11	1.28
3:C:107:ALA:CB	3:C:193:LEU:HD22	1.57	1.27
3:C:205:THR:O	3:C:214:SER:HB3	1.22	1.27
3:C:205:THR:O	3:C:214:SER:CB	1.83	1.25
2:B:288:VAL:CG1	2:B:323:MET:CE	2.14	1.24
3:C:322:MET:CE	3:C:347:GLN:CG	1.93	1.21

*Continued on next page...*

*Continued from previous page...*

Atom-1	Atom-2	Interatomic distance (Å)	Clash overlap (Å)
2:B:288:VAL:CG1	2:B:323:MET:HE3	1.70	1.18
3:C:16:VAL:CG2	3:C:348:ASN:HD21	1.56	1.18
3:C:322:MET:CE	3:C:347:GLN:HA	1.72	1.18
3:C:322:MET:CE	3:C:347:GLN:CA	2.26	1.13
3:C:322:MET:HE2	3:C:347:GLN:HA	1.20	1.11
3:C:16:VAL:HB	3:C:348:ASN:ND2	1.66	1.11
3:C:286:ILE:HD12	3:C:346:ALA:HB2	1.27	1.10
3:C:145:TYR:CE2	3:C:203:ARG:NH2	2.18	1.10
2:B:288:VAL:HG13	2:B:323:MET:HE3	1.31	1.09
2:B:287:THR:O	2:B:291:LEU:HD13	1.56	1.06
2:B:288:VAL:HG11	2:B:323:MET:HE1	1.37	1.04
3:C:16:VAL:HB	3:C:348:ASN:O	1.57	1.04
3:C:107:ALA:HB2	3:C:193:LEU:HD23	1.06	1.02
3:C:145:TYR:CE2	3:C:203:ARG:NH1	2.26	1.02
2:B:288:VAL:CG2	2:B:289:PRO:HD3	1.89	1.01
1:A:3:GLU:OE1	1:A:64:ARG:NE	1.93	1.01
2:B:288:VAL:CG1	2:B:323:MET:HE1	1.85	1.00
2:B:287:THR:OG1	2:B:290:GLU:OE1	1.80	0.99
3:C:107:ALA:HB1	3:C:193:LEU:HD22	1.00	0.99
3:C:322:MET:HE1	3:C:347:GLN:CA	1.88	0.99
3:C:107:ALA:HB1	3:C:193:LEU:CD2	1.79	0.99
2:B:288:VAL:CG2	2:B:289:PRO:CD	2.41	0.99
3:C:145:TYR:HE2	3:C:203:ARG:NH1	1.59	0.98
3:C:322:MET:HE3	3:C:347:GLN:HG3	1.40	0.98
2:B:288:VAL:HG23	2:B:289:PRO:HD3	0.96	0.94
3:C:199:GLY:O	3:C:203:ARG:NH1	2.01	0.93
2:B:287:THR:O	2:B:291:LEU:CD1	2.18	0.92
3:C:343:ALA:O	3:C:347:GLN:HB2	1.69	0.92
3:C:16:VAL:HG23	3:C:348:ASN:HD21	1.35	0.91
3:C:211:ASN:HD21	3:C:214:SER:H	1.16	0.91
3:C:16:VAL:CB	3:C:348:ASN:ND2	2.33	0.91
3:C:322:MET:HE2	3:C:347:GLN:CA	1.96	0.90
3:C:343:ALA:O	3:C:347:GLN:CB	2.07	0.90
3:C:145:TYR:CE2	3:C:203:ARG:CZ	2.54	0.90
3:C:16:VAL:CB	3:C:348:ASN:O	2.19	0.90
3:C:16:VAL:CG2	3:C:348:ASN:ND2	2.34	0.90
3:C:343:ALA:O	3:C:347:GLN:N	2.05	0.89
3:C:211:ASN:ND2	3:C:214:SER:H	1.70	0.88
3:C:145:TYR:HE2	3:C:203:ARG:HH12	0.91	0.87
2:B:288:VAL:N	2:B:289:PRO:HD2	1.90	0.86
2:B:288:VAL:HG23	2:B:289:PRO:HD2	1.58	0.84

*Continued on next page...*

*Continued from previous page...*

Atom-1	Atom-2	Interatomic distance (Å)	Clash overlap (Å)
2:B:287:THR:OG1	2:B:290:GLU:CD	2.16	0.83
3:C:16:VAL:CG1	3:C:348:ASN:O	2.29	0.81
1:A:2:ARG:HB2	1:A:132:LEU:HA	1.62	0.80
3:C:286:ILE:CD1	3:C:346:ALA:HB2	2.09	0.80
3:C:202:ALA:O	3:C:203:ARG:HG3	1.84	0.78
3:C:107:ALA:CB	3:C:193:LEU:HD23	1.84	0.78
3:C:106:GLU:HA	3:C:120:VAL:HG21	1.65	0.77
3:C:199:GLY:C	3:C:203:ARG:NH1	2.40	0.75
3:C:16:VAL:CB	3:C:348:ASN:HD21	1.98	0.75
1:A:2:ARG:CB	1:A:132:LEU:HA	2.17	0.75
1:A:3:GLU:OE1	1:A:64:ARG:CZ	2.33	0.74
3:C:205:THR:O	3:C:214:SER:HB2	1.83	0.74
3:C:145:TYR:CZ	3:C:203:ARG:NH2	2.45	0.74
2:B:287:THR:OG1	2:B:290:GLU:OE2	2.07	0.73
2:B:287:THR:N	2:B:290:GLU:OE1	2.22	0.73
2:B:288:VAL:CG2	2:B:289:PRO:HD2	2.16	0.72
3:C:322:MET:CE	3:C:347:GLN:HB3	2.18	0.70
3:C:16:VAL:HG12	3:C:348:ASN:O	1.92	0.69
3:C:210:LEU:O	3:C:212:HIS:CD2	2.47	0.67
3:C:322:MET:SD	3:C:347:GLN:HG3	2.33	0.67
2:B:242:LEU:HD22	2:B:250:ALA:H	1.59	0.67
2:B:288:VAL:H	2:B:289:PRO:HD2	1.59	0.66
3:C:16:VAL:HG21	3:C:348:ASN:HD21	1.59	0.66
2:B:287:THR:HB	2:B:289:PRO:HD2	1.78	0.66
3:C:106:GLU:OE1	3:C:106:GLU:N	2.30	0.65
2:B:288:VAL:N	2:B:289:PRO:CD	2.60	0.64
2:B:54:ASN:HD21	2:B:64:ARG:HD3	1.62	0.64
3:C:158:GLU:HG3	3:C:160:GLY:H	1.63	0.63
3:C:108:SER:OG	3:C:117:GLN:HA	1.98	0.62
3:C:210:LEU:O	3:C:212:HIS:HD2	1.80	0.62
2:B:285:ALA:O	2:B:286:LEU:HD22	1.99	0.62
1:A:76:ASP:HA	1:A:79:ARG:HB2	1.82	0.61
3:C:148:VAL:HB	3:C:218:HIS:HB2	1.82	0.61
3:C:106:GLU:HA	3:C:120:VAL:CG2	2.31	0.61
3:C:202:ALA:C	3:C:203:ARG:HG3	2.20	0.60
2:B:288:VAL:HG13	2:B:323:MET:CE	2.04	0.60
3:C:147:GLU:HB3	3:C:154:ARG:HB3	1.82	0.60
2:B:209:LEU:HB3	2:B:227:LEU:HD22	1.84	0.60
3:C:156:LEU:HB3	3:C:203:ARG:CZ	2.31	0.60
2:B:288:VAL:O	2:B:292:THR:HG23	2.02	0.59
3:C:322:MET:HE2	3:C:347:GLN:CB	2.13	0.58

*Continued on next page...*

*Continued from previous page...*

Atom-1	Atom-2	Interatomic distance (Å)	Clash overlap (Å)
3:C:343:ALA:O	3:C:347:GLN:CA	2.50	0.58
2:B:242:LEU:HD21	2:B:354:ALA:HB1	1.85	0.58
3:C:68:GLU:OE1	3:C:122:ARG:NH1	2.36	0.58
3:C:199:GLY:CA	3:C:203:ARG:NH1	2.67	0.58
3:C:205:THR:C	3:C:214:SER:CB	2.70	0.58
3:C:347:GLN:N	3:C:347:GLN:OE1	2.36	0.58
3:C:106:GLU:HG2	3:C:200:ASN:HD21	1.69	0.57
1:A:2:ARG:HD2	1:A:2:ARG:O	2.04	0.57
2:B:427:ASP:HB2	3:C:298:HIS:HE1	1.68	0.57
1:A:233:GLN:HE22	1:A:360:PRO:HB3	1.70	0.57
1:A:70:LEU:HD12	1:A:145:THR:HG23	1.86	0.57
1:A:68:VAL:HG22	1:A:93:ILE:HB	1.87	0.56
3:C:16:VAL:HB	3:C:348:ASN:CG	2.24	0.56
3:C:223:VAL:HB	3:C:248:PHE:HB3	1.86	0.56
3:C:347:GLN:H	3:C:347:GLN:CD	2.09	0.56
3:C:322:MET:HE1	3:C:347:GLN:HG3	0.85	0.56
1:A:237:SER:HA	1:A:320:ARG:HH11	1.71	0.56
3:C:322:MET:HE3	3:C:347:GLN:CG	2.10	0.55
2:B:288:VAL:O	2:B:292:THR:N	2.36	0.55
3:C:284:ASN:OD1	3:C:294:ARG:NH2	2.40	0.55
3:C:145:TYR:CD2	3:C:203:ARG:NH1	2.73	0.55
2:B:277:SER:HG	2:B:280:SER:HG	1.54	0.54
3:C:154:ARG:NH2	3:C:202:ALA:O	2.39	0.54
3:C:21:ARG:NH1	3:C:67:GLN:OE1	2.40	0.54
3:C:157:LEU:HB3	3:C:182:LYS:HD3	1.89	0.54
2:B:210:TYR:O	2:B:214:PHE:HB3	2.07	0.54
1:A:169:PHE:HE1	1:A:204:VAL:H	1.56	0.54
2:B:287:THR:O	2:B:291:LEU:HD12	2.06	0.53
1:A:134:GLY:HA3	1:A:165:SER:HB2	1.89	0.53
1:A:102:ASN:HB2	1:A:408:TYR:HE1	1.72	0.53
1:A:261:PRO:HB3	1:A:346:TRP:HH2	1.74	0.52
2:B:51:VAL:O	2:B:64:ARG:NH2	2.42	0.52
1:A:186:ASN:O	1:A:190:THR:OG1	2.22	0.52
3:C:107:ALA:CA	3:C:193:LEU:CD2	2.82	0.52
1:A:71:GLU:HG2	1:A:73:THR:H	1.75	0.52
3:C:106:GLU:CA	3:C:120:VAL:HG21	2.39	0.52
2:B:285:ALA:HB1	2:B:290:GLU:HG2	1.91	0.52
1:A:2:ARG:N	1:A:2:ARG:CD	2.73	0.51
2:B:158:ARG:NH1	2:B:197:ASN:O	2.44	0.51
3:C:156:LEU:HB3	3:C:203:ARG:NH1	2.26	0.51
1:A:189:LEU:HD11	1:A:418:PHE:HE1	1.76	0.51

*Continued on next page...*

*Continued from previous page...*

Atom-1	Atom-2	Interatomic distance (Å)	Clash overlap (Å)
1:A:2:ARG:HB3	1:A:132:LEU:HA	1.93	0.51
2:B:276:THR:HB	2:B:281:GLN:HB3	1.91	0.51
2:B:144:GLY:HA2	2:B:148:GLY:H	1.76	0.51
3:C:199:GLY:C	3:C:203:ARG:HH11	2.11	0.50
3:C:203:ARG:HG2	3:C:207:ALA:HA	1.93	0.50
2:B:318:VAL:HB	2:B:376:THR:HB	1.93	0.50
1:A:251:ASP:OD2	1:A:253:THR:OG1	2.29	0.50
1:A:25:CYS:HA	1:A:30:ILE:HD12	1.91	0.50
1:A:102:ASN:OD1	1:A:102:ASN:N	2.45	0.50
1:A:318:LEU:HD23	1:A:354:GLY:HA3	1.94	0.50
7:B:601:TA1:H472	7:B:601:TA1:H193	1.94	0.50
1:A:67:PHE:HB2	1:A:92:LEU:HD22	1.94	0.49
1:A:242:LEU:HD11	1:A:249:ASN:HA	1.93	0.49
3:C:154:ARG:HH22	3:C:208:THR:N	1.99	0.49
1:A:270:ALA:HA	1:A:378:LEU:HA	1.93	0.49
3:C:142:HIS:ND1	3:C:183:GLU:OE1	2.38	0.49
1:A:11:GLN:NE2	2:B:247:GLN:O	2.45	0.49
2:B:288:VAL:HG12	2:B:323:MET:HE1	1.90	0.49
3:C:259:VAL:HG12	3:C:261:LYS:HB2	1.95	0.49
2:B:285:ALA:O	2:B:286:LEU:CD2	2.60	0.49
2:B:318:VAL:HA	2:B:354:ALA:HB3	1.95	0.49
1:A:32:PRO:HA	1:A:86:LEU:HD13	1.94	0.48
1:A:305:CYS:SG	1:A:381:THR:OG1	2.71	0.48
2:B:305:CYS:H	2:B:387:LEU:HD12	1.77	0.48
3:C:21:ARG:NH2	3:C:65:ALA:O	2.46	0.48
2:B:132:LEU:HB3	2:B:164:ARG:HE	1.78	0.48
3:C:205:THR:CG2	3:C:211:ASN:HB2	2.44	0.48
2:B:287:THR:CB	2:B:290:GLU:OE1	2.60	0.48
2:B:36:TYR:OH	2:B:40:SER:O	2.25	0.47
2:B:402:LYS:HD3	2:B:405:LEU:HD13	1.95	0.47
3:C:147:GLU:HB2	3:C:156:LEU:HD11	1.97	0.47
3:C:156:LEU:HA	3:C:203:ARG:HD2	1.94	0.47
2:B:198:THR:OG1	2:B:199:ASP:N	2.46	0.47
2:B:285:ALA:C	2:B:286:LEU:HD23	2.35	0.47
3:C:199:GLY:CA	3:C:203:ARG:HH11	2.28	0.47
2:B:67:LEU:HB2	2:B:92:PHE:HA	1.97	0.47
2:B:287:THR:CA	2:B:290:GLU:OE1	2.63	0.47
1:A:17:GLY:O	1:A:21:TRP:HB2	2.15	0.47
2:B:205:ASP:OD2	2:B:304:ALA:N	2.44	0.47
2:B:264:ARG:HE	3:C:302:ARG:NH1	2.12	0.47
3:C:53:ARG:HD3	3:C:337:LEU:HD13	1.95	0.47

*Continued on next page...*

*Continued from previous page...*

Atom-1	Atom-2	Interatomic distance (Å)	Clash overlap (Å)
1:A:2:ARG:N	1:A:2:ARG:NE	2.62	0.47
1:A:321:GLY:HA3	1:A:373:ARG:HA	1.97	0.47
3:C:153:PHE:O	3:C:163:SER:OG	2.31	0.47
1:A:310:GLY:HA2	1:A:382:THR:HB	1.96	0.47
3:C:156:LEU:CB	3:C:203:ARG:CZ	2.80	0.46
3:C:228:ARG:HG3	3:C:241:GLY:HA2	1.97	0.46
2:B:356:CYS:SG	2:B:357:ASP:N	2.89	0.46
3:C:16:VAL:HG21	3:C:348:ASN:ND2	2.23	0.46
3:C:46:ARG:HD2	3:C:54:HIS:HB3	1.97	0.46
2:B:287:THR:HB	2:B:289:PRO:CD	2.44	0.46
2:B:320:ARG:HH12	2:B:360:PRO:HB3	1.80	0.46
3:C:106:GLU:HA	3:C:120:VAL:CB	2.46	0.46
2:B:167:ASN:ND2	2:B:200:GLU:OE1	2.49	0.45
2:B:213:CYS:HA	2:B:217:LEU:HB2	1.98	0.45
2:B:315:VAL:HG13	2:B:377:PHE:HE1	1.80	0.45
1:A:204:VAL:HG13	1:A:302:MET:HB3	1.99	0.45
1:A:221:ARG:HG2	2:B:324:SER:HB2	1.98	0.45
3:C:39:GLN:HB3	3:C:48:THR:HB	1.99	0.45
2:B:102:ASN:HB3	2:B:105:LYS:HB2	1.99	0.45
3:C:322:MET:SD	3:C:347:GLN:HA	2.57	0.45
2:B:137:LEU:HD22	2:B:154:ILE:HG21	1.99	0.44
2:B:168:THR:HB	2:B:201:THR:HA	1.98	0.44
2:B:141:LEU:HD23	2:B:187:ALA:HA	1.98	0.44
2:B:289:PRO:O	2:B:292:THR:OG1	2.31	0.44
2:B:23:VAL:HG22	7:B:601:TA1:H321	2.00	0.44
3:C:154:ARG:CZ	3:C:203:ARG:HG2	2.48	0.44
1:A:2:ARG:HD2	1:A:2:ARG:N	2.33	0.44
2:B:155:SER:OG	2:B:197:ASN:ND2	2.51	0.44
3:C:146:LEU:HB2	3:C:220:VAL:HB	1.99	0.44
2:B:25:SER:HB2	2:B:30:ILE:HB	2.00	0.44
3:C:19:ALA:HB3	3:C:323:ILE:HG12	2.00	0.43
1:A:288:VAL:HG22	1:A:373:ARG:HG3	2.00	0.43
3:C:103:THR:OG1	3:C:325:CYS:SG	2.72	0.43
1:A:331:ALA:HA	1:A:334:THR:HG22	2.00	0.43
3:C:121:PRO:HG3	3:C:193:LEU:HD21	2.00	0.43
2:B:288:VAL:CB	2:B:289:PRO:CD	2.94	0.43
1:A:101:ASN:HB2	2:B:254:LYS:HG2	2.01	0.43
2:B:315:VAL:O	2:B:352:LYS:N	2.47	0.43
2:B:36:TYR:CZ	2:B:44:LEU:HB2	2.54	0.43
2:B:163:ASP:HB2	2:B:164:ARG:HD2	2.00	0.43
3:C:102:TYR:HB2	8:C:401:ADP:H2'	2.00	0.42

*Continued on next page...*

Continued from previous page...

Atom-1	Atom-2	Interatomic distance (Å)	Clash overlap (Å)
3:C:107:ALA:HA	3:C:121:PRO:HG3	2.01	0.42
1:A:208:ALA:HB3	1:A:302:MET:HA	2.00	0.42
2:B:185:TYR:OH	2:B:398:MET:O	2.32	0.42
2:B:5:VAL:HG12	2:B:64:ARG:HE	1.84	0.42
3:C:49:LEU:HB3	3:C:53:ARG:HB2	2.01	0.42
2:B:311:ARG:HD3	2:B:342:TYR:HA	2.01	0.42
3:C:106:GLU:N	3:C:106:GLU:CD	2.73	0.42
1:A:16:ILE:HG13	1:A:228:ASN:HA	2.01	0.42
2:B:352:LYS:HD2	2:B:352:LYS:HA	1.81	0.42
7:B:601:TA1:H432	7:B:601:TA1:H101	1.78	0.42
1:A:88:HIS:O	1:A:91:GLN:NE2	2.52	0.42
1:A:344:VAL:HG12	1:A:347:CYS:H	1.83	0.42
3:C:38:LEU:HD12	3:C:328:PRO:HA	2.01	0.42
3:C:108:SER:OG	3:C:117:GLN:CB	2.68	0.42
1:A:10:GLY:O	1:A:14:VAL:N	2.42	0.42
2:B:404:PHE:HD1	2:B:404:PHE:HA	1.73	0.42
2:B:371:LEU:HD23	2:B:374:SER:HB3	2.01	0.41
2:B:385:GLN:HG3	2:B:429:VAL:HG13	2.02	0.41
2:B:311:ARG:HD2	2:B:344:VAL:HB	2.02	0.41
3:C:211:ASN:ND2	3:C:214:SER:N	2.52	0.41
1:A:315:CYS:HB2	1:A:351:PHE:CE1	2.56	0.41
2:B:288:VAL:C	2:B:292:THR:HG23	2.40	0.41
3:C:342:TYR:O	3:C:347:GLN:OE1	2.38	0.41
2:B:243:ARG:HD3	2:B:243:ARG:HA	1.85	0.41
2:B:23:VAL:HA	7:B:601:TA1:H331	2.03	0.40
2:B:32:PRO:HG3	2:B:83:PHE:CE1	2.56	0.40
3:C:108:SER:OG	3:C:117:GLN:CA	2.68	0.40
1:A:408:TYR:HD2	1:A:418:PHE:HZ	1.69	0.40
2:B:158:ARG:HD2	2:B:158:ARG:HA	1.89	0.40
2:B:336:GLN:HG2	2:B:343:PHE:HE2	1.85	0.40
2:B:360:PRO:HG2	2:B:371:LEU:HB3	2.02	0.40
2:B:416:MET:HB3	3:C:169:ARG:HB3	2.04	0.40
3:C:95:GLN:HB3	3:C:98:SER:HB3	2.02	0.40
3:C:154:ARG:HD3	3:C:207:ALA:HB2	1.46	0.40
1:A:394:LYS:HG3	2:B:348:PRO:HG3	2.03	0.40
3:C:106:GLU:CD	3:C:106:GLU:O	2.59	0.40
2:B:285:ALA:C	2:B:286:LEU:CD2	2.89	0.40

There are no symmetry-related clashes.



## 5.3 Torsion angles [i](#)

### 5.3.1 Protein backbone [i](#)

In the following table, the Percentiles column shows the percent Ramachandran outliers of the chain as a percentile score with respect to all PDB entries followed by that with respect to all EM entries.

The Analysed column shows the number of residues for which the backbone conformation was analysed, and the total number of residues.

Mol	Chain	Analysed	Favoured	Allowed	Outliers	Percentiles	
1	A	407/451 (90%)	365 (90%)	42 (10%)	0	100	100
2	B	424/445 (95%)	380 (90%)	44 (10%)	0	100	100
3	C	323/399 (81%)	298 (92%)	25 (8%)	0	100	100
All	All	1154/1295 (89%)	1043 (90%)	111 (10%)	0	100	100

There are no Ramachandran outliers to report.

### 5.3.2 Protein sidechains [i](#)

In the following table, the Percentiles column shows the percent sidechain outliers of the chain as a percentile score with respect to all PDB entries followed by that with respect to all EM entries.

The Analysed column shows the number of residues for which the sidechain conformation was analysed, and the total number of residues.

Mol	Chain	Analysed	Rotameric	Outliers	Percentiles	
1	A	347/377 (92%)	342 (99%)	5 (1%)	67	80
2	B	367/381 (96%)	355 (97%)	12 (3%)	38	61
3	C	262/328 (80%)	255 (97%)	7 (3%)	44	66
All	All	976/1086 (90%)	952 (98%)	24 (2%)	50	68

All (24) residues with a non-rotameric sidechain are listed below:

Mol	Chain	Res	Type
1	A	2	ARG
1	A	18	ASN
1	A	300	ASN
1	A	373	ARG
1	A	380	ASN

*Continued on next page...*

*Continued from previous page...*

Mol	Chain	Res	Type
2	B	14	ASN
2	B	101	ASN
2	B	278	ARG
2	B	286	LEU
2	B	287	THR
2	B	288	VAL
2	B	299	LYS
2	B	300	ASN
2	B	349	ASN
2	B	380	ASN
2	B	404	PHE
2	B	424	ASN
3	C	106	GLU
3	C	108	SER
3	C	109	VAL
3	C	204	HIS
3	C	208	THR
3	C	209	HIS
3	C	347	GLN

Sometimes sidechains can be flipped to improve hydrogen bonding and reduce clashes. All (15) such sidechains are listed below:

Mol	Chain	Res	Type
1	A	18	ASN
1	A	61	HIS
1	A	233	GLN
1	A	300	ASN
1	A	380	ASN
2	B	101	ASN
2	B	197	ASN
2	B	337	ASN
2	B	349	ASN
2	B	380	ASN
2	B	424	ASN
3	C	54	HIS
3	C	200	ASN
3	C	211	ASN
3	C	348	ASN

### 5.3.3 RNA [i](#)

There are no RNA molecules in this entry.

## 5.4 Non-standard residues in protein, DNA, RNA chains [i](#)

There are no non-standard protein/DNA/RNA residues in this entry.

## 5.5 Carbohydrates [i](#)

There are no monosaccharides in this entry.

## 5.6 Ligand geometry [i](#)

Of 6 ligands modelled in this entry, 2 are monoatomic - leaving 4 for Mogul analysis.

In the following table, the Counts columns list the number of bonds (or angles) for which Mogul statistics could be retrieved, the number of bonds (or angles) that are observed in the model and the number of bonds (or angles) that are defined in the Chemical Component Dictionary. The Link column lists molecule types, if any, to which the group is linked. The Z score for a bond length (or angle) is the number of standard deviations the observed value is removed from the expected value. A bond length (or angle) with  $|Z| > 2$  is considered an outlier worth inspection. RMSZ is the root-mean-square of all Z scores of the bond lengths (or angles).

Mol	Type	Chain	Res	Link	Bond lengths			Bond angles		
					Counts	RMSZ	# Z  > 2	Counts	RMSZ	# Z  > 2
6	GDP	B	600	-	24,30,30	0.97	1 (4%)	30,47,47	1.40	4 (13%)
5	GTP	A	502	4	26,34,34	1.26	1 (3%)	32,54,54	1.50	7 (21%)
7	TA1	B	601	-	68,68,68	3.01	25 (36%)	105,105,105	2.06	25 (23%)
8	ADP	C	401	4	24,29,29	0.96	1 (4%)	29,45,45	1.46	4 (13%)

In the following table, the Chirals column lists the number of chiral outliers, the number of chiral centers analysed, the number of these observed in the model and the number defined in the Chemical Component Dictionary. Similar counts are reported in the Torsion and Rings columns. '-' means no outliers of that kind were identified.

Mol	Type	Chain	Res	Link	Chirals	Torsions	Rings
6	GDP	B	600	-	-	5/12/32/32	0/3/3/3
5	GTP	A	502	4	-	6/18/38/38	0/3/3/3
7	TA1	B	601	-	-	13/41/127/127	0/7/7/7
8	ADP	C	401	4	-	6/12/32/32	0/3/3/3

All (28) bond length outliers are listed below:

Mol	Chain	Res	Type	Atoms	Z	Observed(Å)	Ideal(Å)
7	B	601	TA1	C25-C24	-10.06	1.19	1.34
7	B	601	TA1	C11-C10	7.17	1.70	1.54
7	B	601	TA1	O06-C15	-7.11	1.32	1.46
7	B	601	TA1	C43-C26	6.74	1.66	1.52
7	B	601	TA1	C14-C11	-6.05	1.36	1.53
7	B	601	TA1	O02-C03	5.49	1.45	1.34
7	B	601	TA1	O11-C27	5.34	1.46	1.34
7	B	601	TA1	O06-C14	5.30	1.57	1.45
7	B	601	TA1	C21-C24	4.96	1.63	1.51
7	B	601	TA1	C30-N01	4.84	1.44	1.34
5	A	502	GTP	C5-C6	-4.60	1.38	1.47
7	B	601	TA1	O04-C12	4.43	1.45	1.35
7	B	601	TA1	C43-C01	4.23	1.63	1.54
7	B	601	TA1	C31-C30	3.98	1.58	1.50
7	B	601	TA1	O09-C21	-3.94	1.35	1.45
7	B	601	TA1	C16-C17	3.90	1.59	1.53
7	B	601	TA1	C44-C25	3.87	1.56	1.50
7	B	601	TA1	O09-C22	3.55	1.43	1.35
7	B	601	TA1	C46-C45	3.41	1.60	1.53
7	B	601	TA1	O11-C26	-3.20	1.39	1.45
6	B	600	GDP	C6-N1	-2.85	1.33	1.37
7	B	601	TA1	C18-C20	2.50	1.62	1.55
7	B	601	TA1	C04-C03	2.49	1.55	1.50
7	B	601	TA1	C18-C17	-2.47	1.48	1.55
8	C	401	ADP	C5-C4	2.46	1.47	1.40
7	B	601	TA1	C01-C02	-2.27	1.49	1.57
7	B	601	TA1	C19-C18	-2.14	1.50	1.54
7	B	601	TA1	C26-C25	-2.11	1.47	1.51

All (40) bond angle outliers are listed below:

Mol	Chain	Res	Type	Atoms	Z	Observed(°)	Ideal(°)
7	B	601	TA1	O11-C27-C28	5.58	120.30	111.15
7	B	601	TA1	C10-C18-C17	5.39	117.03	106.54
7	B	601	TA1	C16-C15-C11	-5.11	112.43	119.61
7	B	601	TA1	O09-C22-C23	4.82	119.95	111.09
7	B	601	TA1	C21-C24-C25	-4.81	113.64	120.40
7	B	601	TA1	C45-C01-C02	4.81	117.17	111.91
7	B	601	TA1	C24-C21-C20	4.60	124.46	113.38
7	B	601	TA1	C14-O06-C15	-4.32	86.44	91.39
7	B	601	TA1	O04-C11-C10	4.32	116.14	109.24
6	B	600	GDP	PA-O3A-PB	-4.32	118.01	132.83

*Continued on next page...*

Continued from previous page...

Mol	Chain	Res	Type	Atoms	Z	Observed(°)	Ideal(°)
7	B	601	TA1	C29-N01-C30	-4.17	115.59	122.28
7	B	601	TA1	C44-C25-C24	-4.14	120.28	125.30
7	B	601	TA1	O06-C14-C11	-3.69	87.78	91.95
7	B	601	TA1	O06-C15-C16	-3.59	106.37	113.21
7	B	601	TA1	C01-C45-C24	3.50	108.67	105.22
7	B	601	TA1	O04-C12-C13	3.48	117.02	110.68
6	B	600	GDP	C3'-C2'-C1'	3.44	106.16	100.98
7	B	601	TA1	C47-C45-C46	-3.36	96.38	106.26
5	A	502	GTP	PA-O3A-PB	-3.34	121.35	132.83
7	B	601	TA1	O02-C02-C01	-3.32	97.73	104.76
8	C	401	ADP	C3'-C2'-C1'	3.30	105.95	100.98
8	C	401	ADP	PA-O3A-PB	-3.28	121.57	132.83
8	C	401	ADP	N3-C2-N1	-3.26	123.58	128.68
5	A	502	GTP	C3'-C2'-C1'	3.19	105.79	100.98
5	A	502	GTP	C2-N1-C6	-3.13	119.34	125.10
5	A	502	GTP	C5-C6-N1	3.09	119.41	113.95
7	B	601	TA1	C31-C30-N01	2.85	122.52	117.06
5	A	502	GTP	C8-N7-C5	2.79	108.30	102.99
7	B	601	TA1	C45-C24-C25	-2.74	115.81	119.61
8	C	401	ADP	C4-C5-N7	-2.67	106.62	109.40
7	B	601	TA1	C10-C11-C15	-2.45	114.95	119.52
5	A	502	GTP	O6-C6-C5	-2.36	119.77	124.37
6	B	600	GDP	C5-C6-N1	2.34	118.08	113.95
5	A	502	GTP	PB-O3B-PG	-2.29	124.96	132.83
7	B	601	TA1	C43-C01-C02	-2.23	107.68	111.70
6	B	600	GDP	C8-N7-C5	2.20	107.18	102.99
7	B	601	TA1	C42-C37-C38	2.18	121.01	118.29
7	B	601	TA1	O14-C30-N01	-2.07	118.64	122.45
7	B	601	TA1	O04-C11-C15	-2.03	107.44	112.28
7	B	601	TA1	O09-C21-C24	-2.00	107.15	109.83

There are no chirality outliers.

All (30) torsion outliers are listed below:

Mol	Chain	Res	Type	Atoms
6	B	600	GDP	C5'-O5'-PA-O1A
6	B	600	GDP	C5'-O5'-PA-O2A
7	B	601	TA1	C28-C27-O11-C26
8	C	401	ADP	PA-O3A-PB-O3B
8	C	401	ADP	C5'-O5'-PA-O1A
8	C	401	ADP	C5'-O5'-PA-O2A
7	B	601	TA1	O02-C03-C04-C05

Continued on next page...

*Continued from previous page...*

Mol	Chain	Res	Type	Atoms
7	B	601	TA1	O02-C03-C04-C09
7	B	601	TA1	O03-C03-C04-C05
7	B	601	TA1	O03-C03-C04-C09
7	B	601	TA1	O12-C27-O11-C26
7	B	601	TA1	O14-C30-C31-C36
7	B	601	TA1	N01-C30-C31-C36
7	B	601	TA1	N01-C30-C31-C32
7	B	601	TA1	O14-C30-C31-C32
7	B	601	TA1	C28-C29-C37-C38
7	B	601	TA1	C28-C29-C37-C42
5	A	502	GTP	PB-O3B-PG-O1G
8	C	401	ADP	PA-O3A-PB-O2B
5	A	502	GTP	O4'-C4'-C5'-O5'
6	B	600	GDP	O4'-C4'-C5'-O5'
5	A	502	GTP	C3'-C4'-C5'-O5'
7	B	601	TA1	C23-C22-O09-C21
8	C	401	ADP	PA-O3A-PB-O1B
5	A	502	GTP	PB-O3B-PG-O2G
5	A	502	GTP	PB-O3B-PG-O3G
6	B	600	GDP	C5'-O5'-PA-O3A
8	C	401	ADP	C5'-O5'-PA-O3A
6	B	600	GDP	C3'-C4'-C5'-O5'
5	A	502	GTP	PB-O3A-PA-O2A

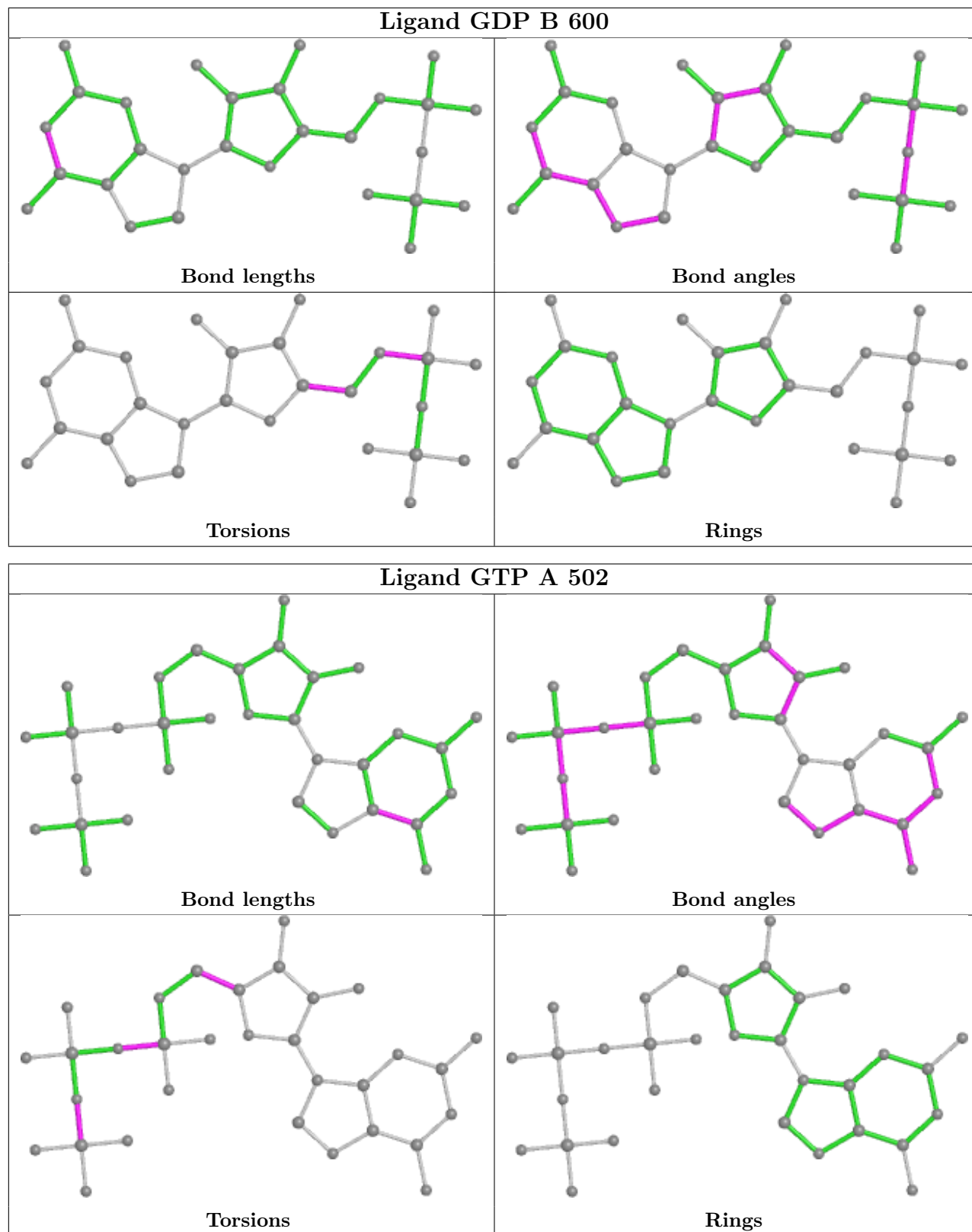
There are no ring outliers.

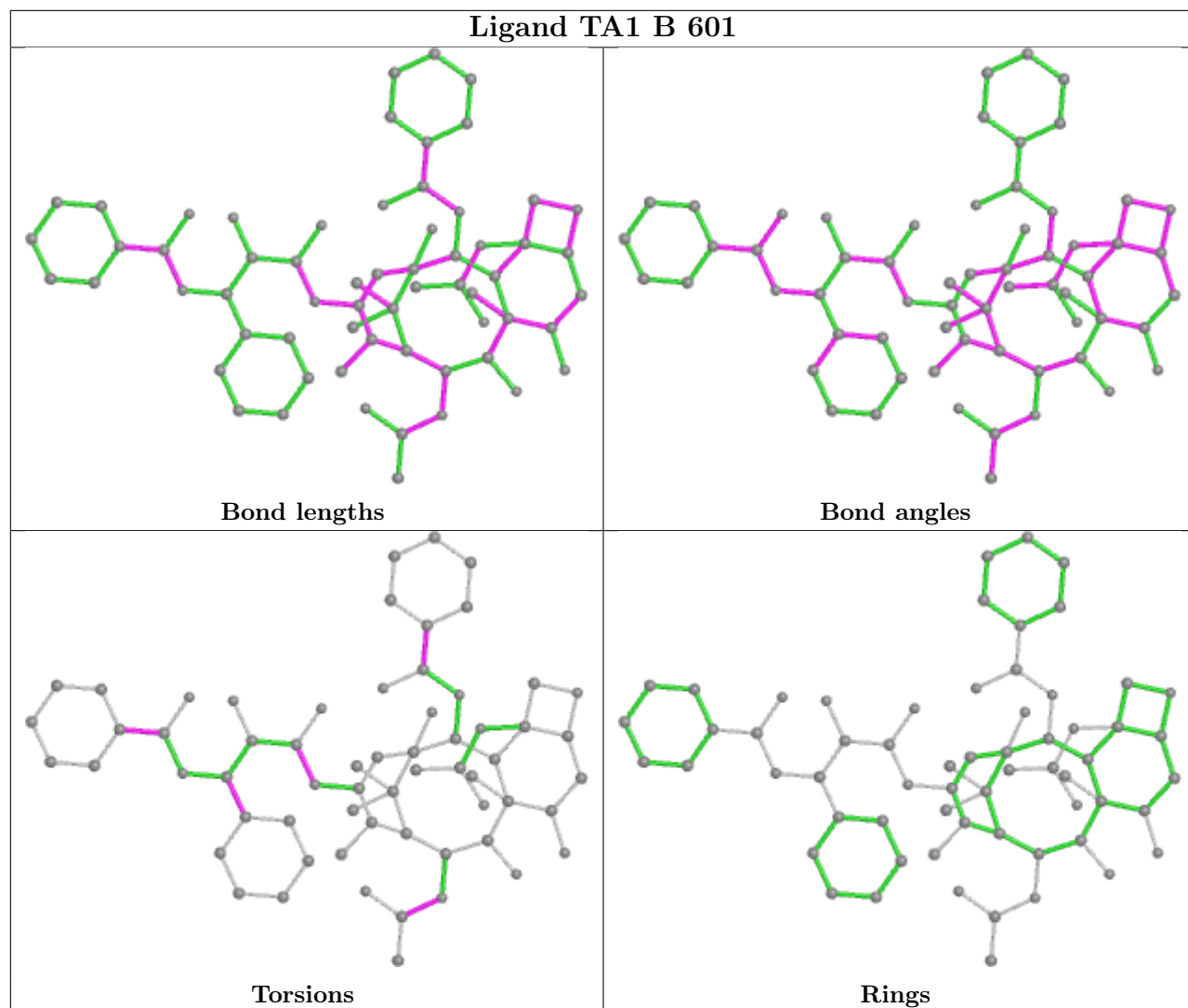
2 monomers are involved in 5 short contacts:

Mol	Chain	Res	Type	Clashes	Symm-Clashes
7	B	601	TA1	4	0
8	C	401	ADP	1	0

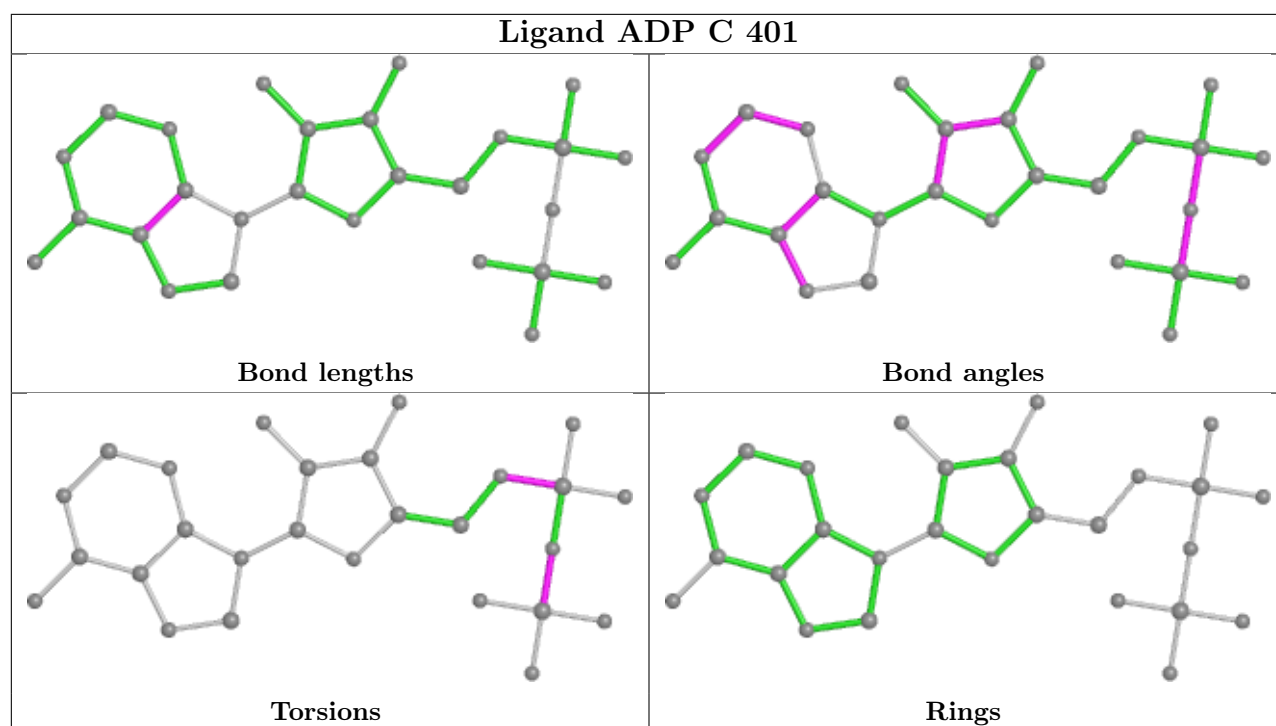
The following is a two-dimensional graphical depiction of Mogul quality analysis of bond lengths, bond angles, torsion angles, and ring geometry for all instances of the Ligand of Interest. In addition, ligands with molecular weight > 250 and outliers as shown on the validation Tables will also be included. For torsion angles, if less than 5% of the Mogul distribution of torsion angles is within 10 degrees of the torsion angle in question, then that torsion angle is considered an outlier. Any bond that is central to one or more torsion angles identified as an outlier by Mogul will be highlighted in the graph. For rings, the root-mean-square deviation (RMSD) between the ring in question and similar rings identified by Mogul is calculated over all ring torsion angles. If the average RMSD is greater than 60 degrees and the minimal RMSD between the ring in question and any Mogul-identified rings is also greater than 60 degrees, then that ring is considered an outlier. The outliers are highlighted in purple. The color gray indicates Mogul did not find sufficient

equivalents in the CSD to analyse the geometry.









## 5.7 Other polymers [i](#)

There are no such residues in this entry.

## 5.8 Polymer linkage issues [i](#)

There are no chain breaks in this entry.

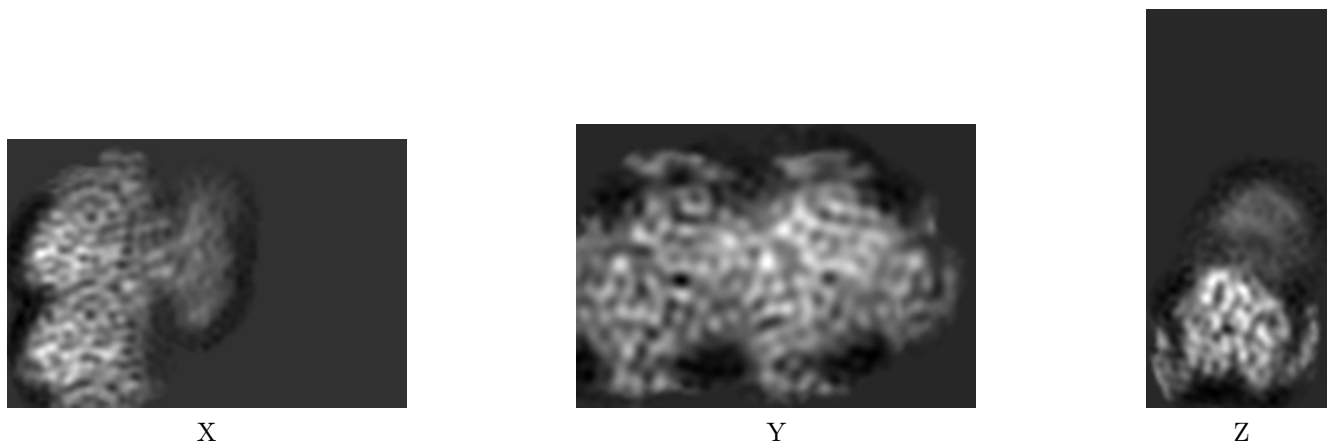
## 6 Map visualisation [i](#)

This section contains visualisations of the EMDB entry EMD-9140. These allow visual inspection of the internal detail of the map and identification of artifacts.

No raw map or half-maps were deposited for this entry and therefore no images, graphs, etc. pertaining to the raw map can be shown.

### 6.1 Orthogonal projections [i](#)

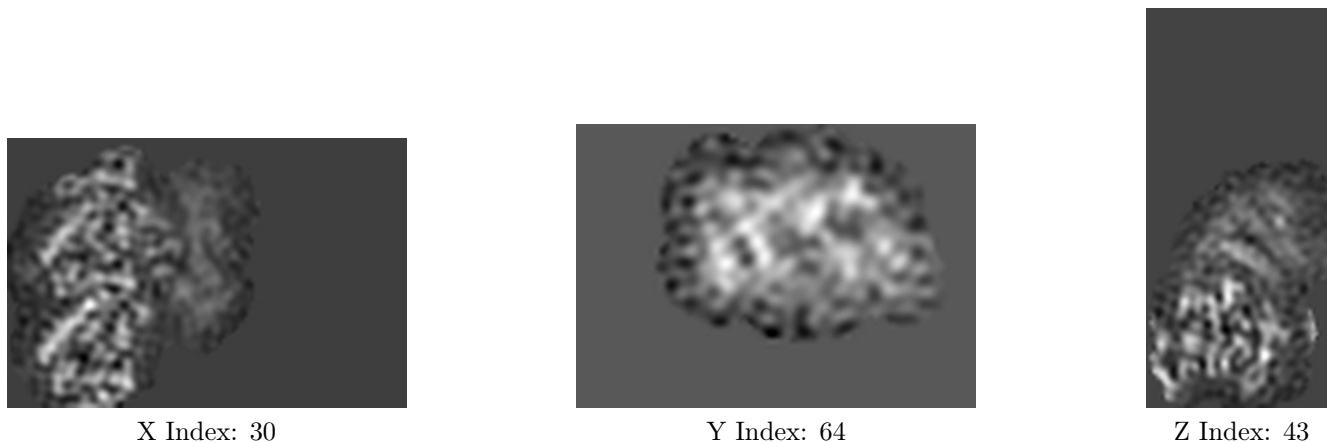
#### 6.1.1 Primary map



The images above show the map projected in three orthogonal directions.

### 6.2 Central slices [i](#)

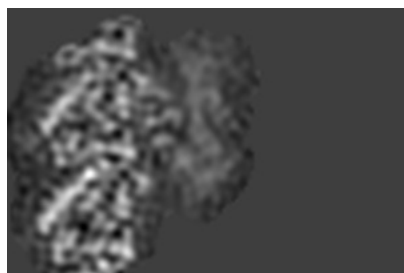
#### 6.2.1 Primary map



The images above show central slices of the map in three orthogonal directions.

## 6.3 Largest variance slices [\(i\)](#)

### 6.3.1 Primary map



X Index: 30



Y Index: 19

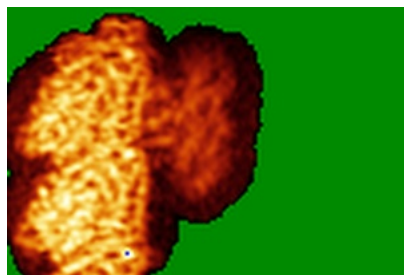


Z Index: 49

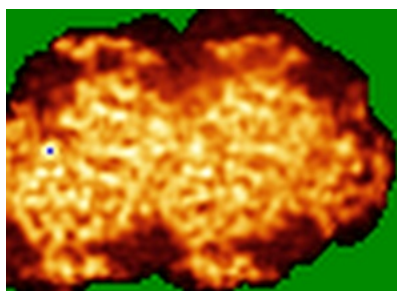
The images above show the largest variance slices of the map in three orthogonal directions.

## 6.4 Orthogonal standard-deviation projections (False-color) [\(i\)](#)

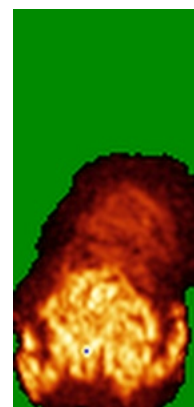
### 6.4.1 Primary map



X



Y

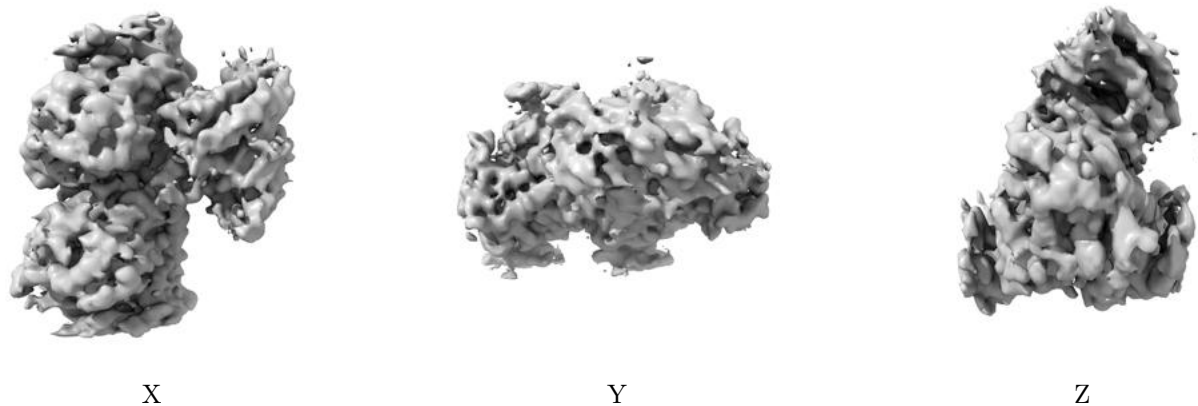


Z

The images above show the map standard deviation projections with false color in three orthogonal directions. Minimum values are shown in green, max in blue, and dark to light orange shades represent small to large values respectively.

## 6.5 Orthogonal surface views [i](#)

### 6.5.1 Primary map



The images above show the 3D surface view of the map at the recommended contour level 0.017. These images, in conjunction with the slice images, may facilitate assessment of whether an appropriate contour level has been provided.

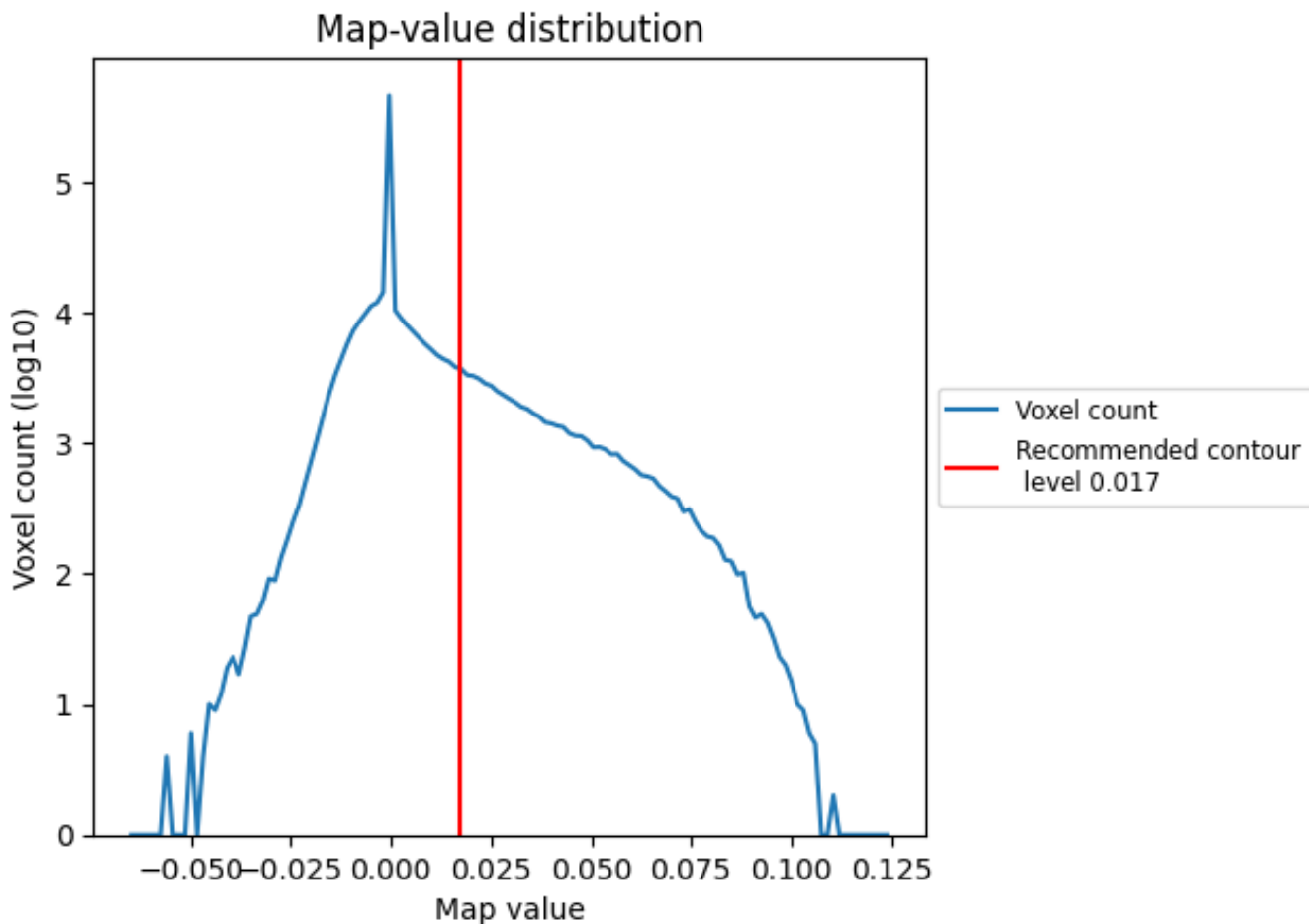
## 6.6 Mask visualisation [i](#)

This section was not generated. No masks/segmentation were deposited.

## 7 Map analysis [i](#)

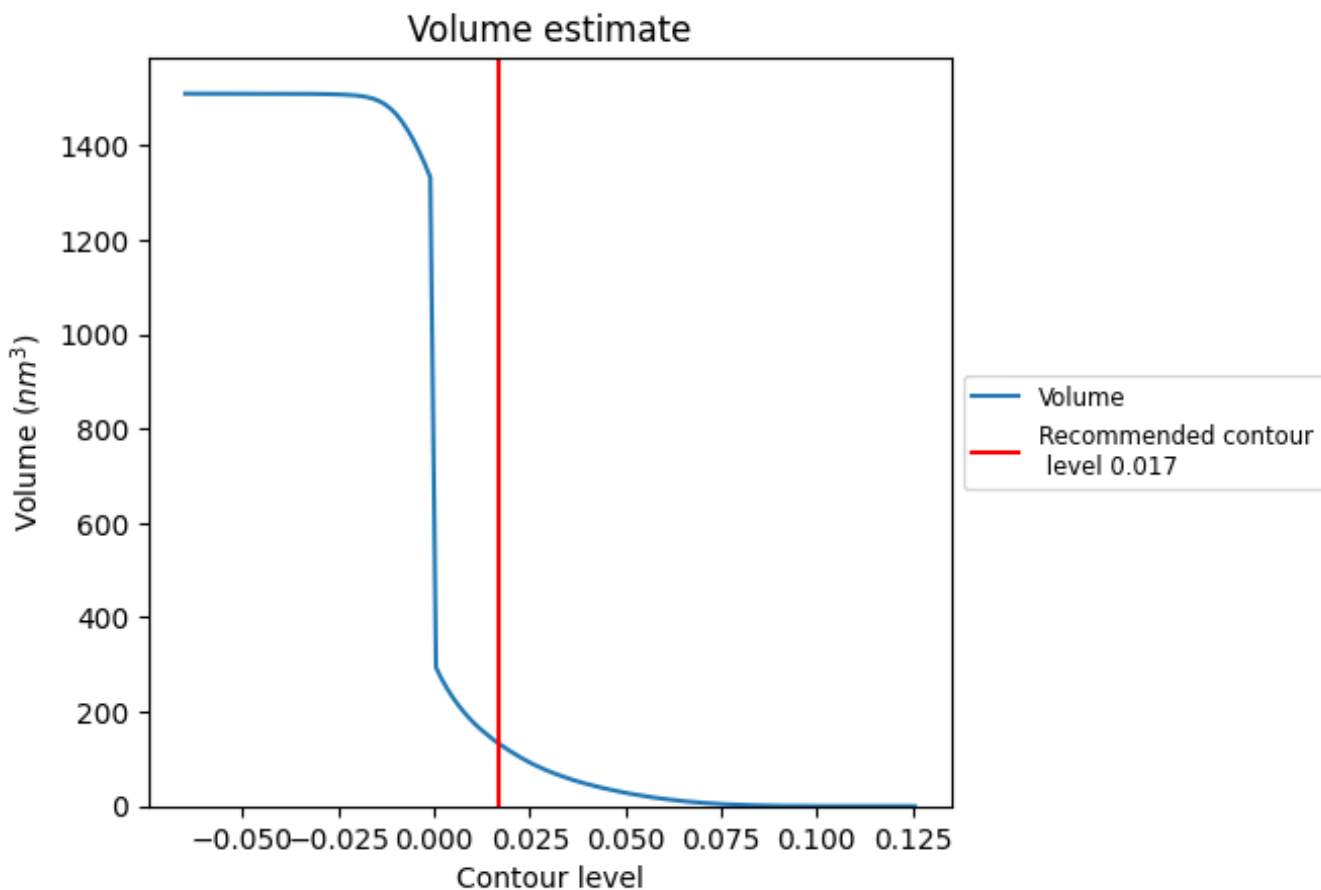
This section contains the results of statistical analysis of the map.

### 7.1 Map-value distribution [i](#)



The map-value distribution is plotted in 128 intervals along the x-axis. The y-axis is logarithmic. A spike in this graph at zero usually indicates that the volume has been masked.

## 7.2 Volume estimate [i](#)



The volume at the recommended contour level is  $132 \text{ nm}^3$ ; this corresponds to an approximate mass of 119 kDa.

The volume estimate graph shows how the enclosed volume varies with the contour level. The recommended contour level is shown as a vertical line and the intersection between the line and the curve gives the volume of the enclosed surface at the given level.

## 7.3 Rotationally averaged power spectrum [i](#)

This section was not generated. The rotationally averaged power spectrum is only generated for cubic maps.

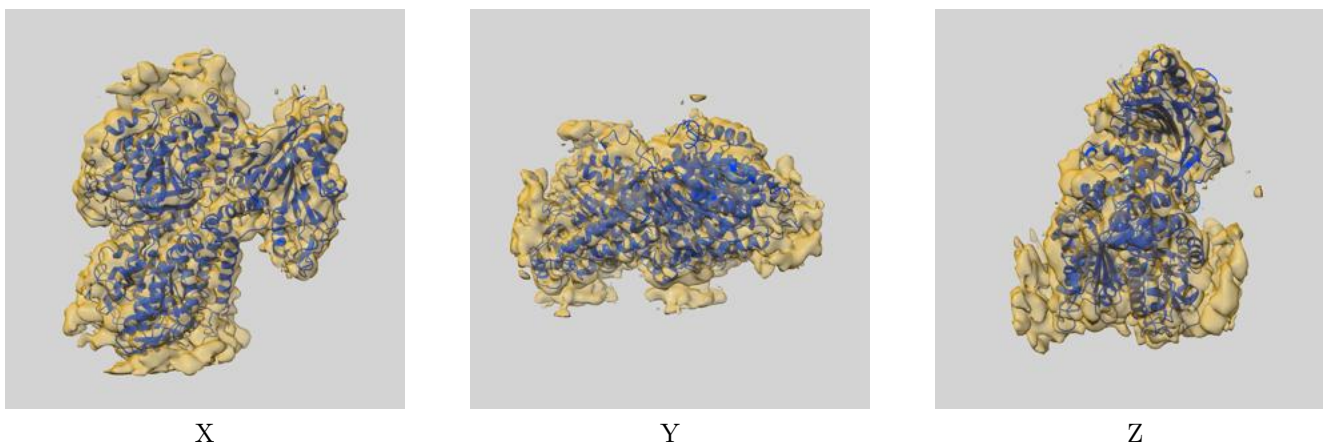
## 8 Fourier-Shell correlation

This section was not generated. No FSC curve or half-maps provided.

## 9 Map-model fit [i](#)

This section contains information regarding the fit between EMDB map EMD-9140 and PDB model 6MLQ. Per-residue inclusion information can be found in section [3](#) on page [6](#).

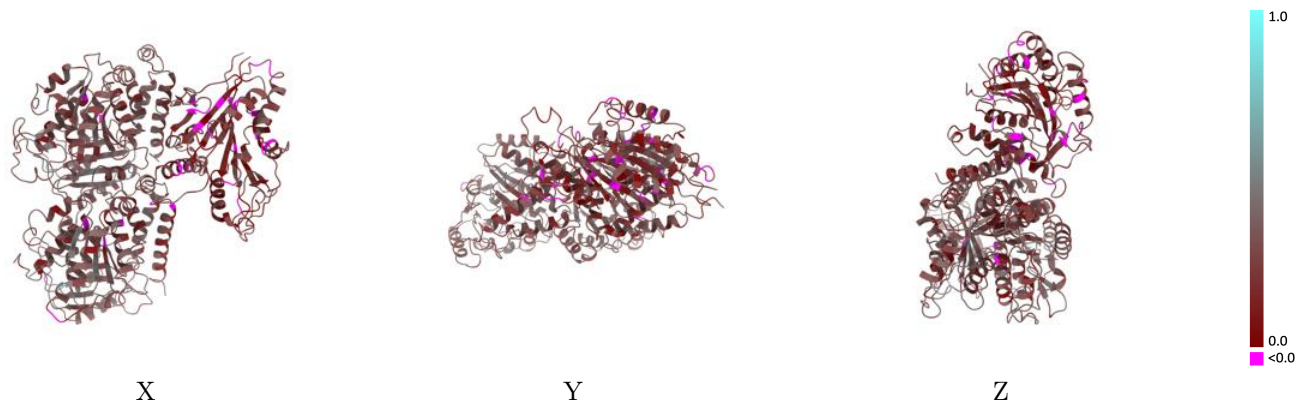
### 9.1 Map-model overlay [i](#)



The images above show the 3D surface view of the map at the recommended contour level 0.017 at 50% transparency in yellow overlaid with a ribbon representation of the model coloured in blue. These images allow for the visual assessment of the quality of fit between the atomic model and the map.

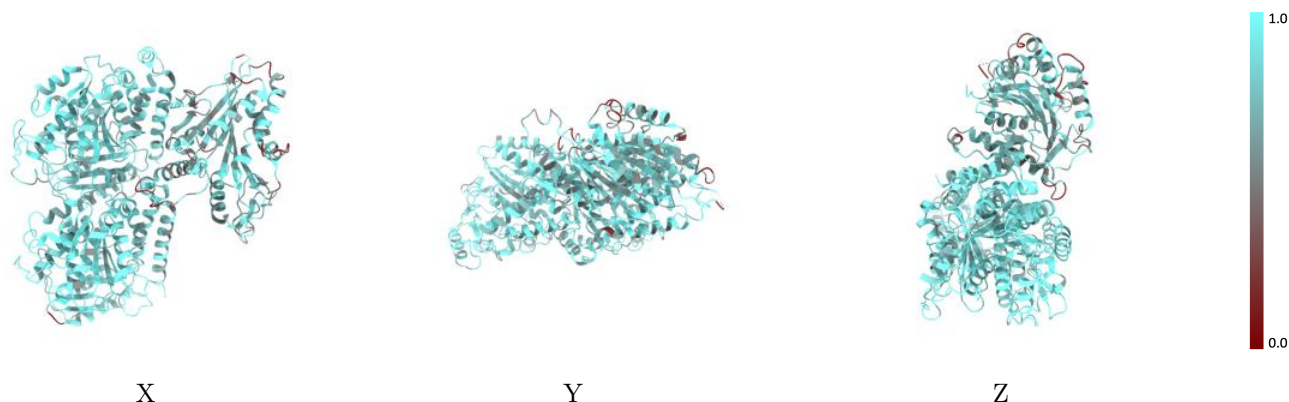


## 9.2 Q-score mapped to coordinate model [i](#)



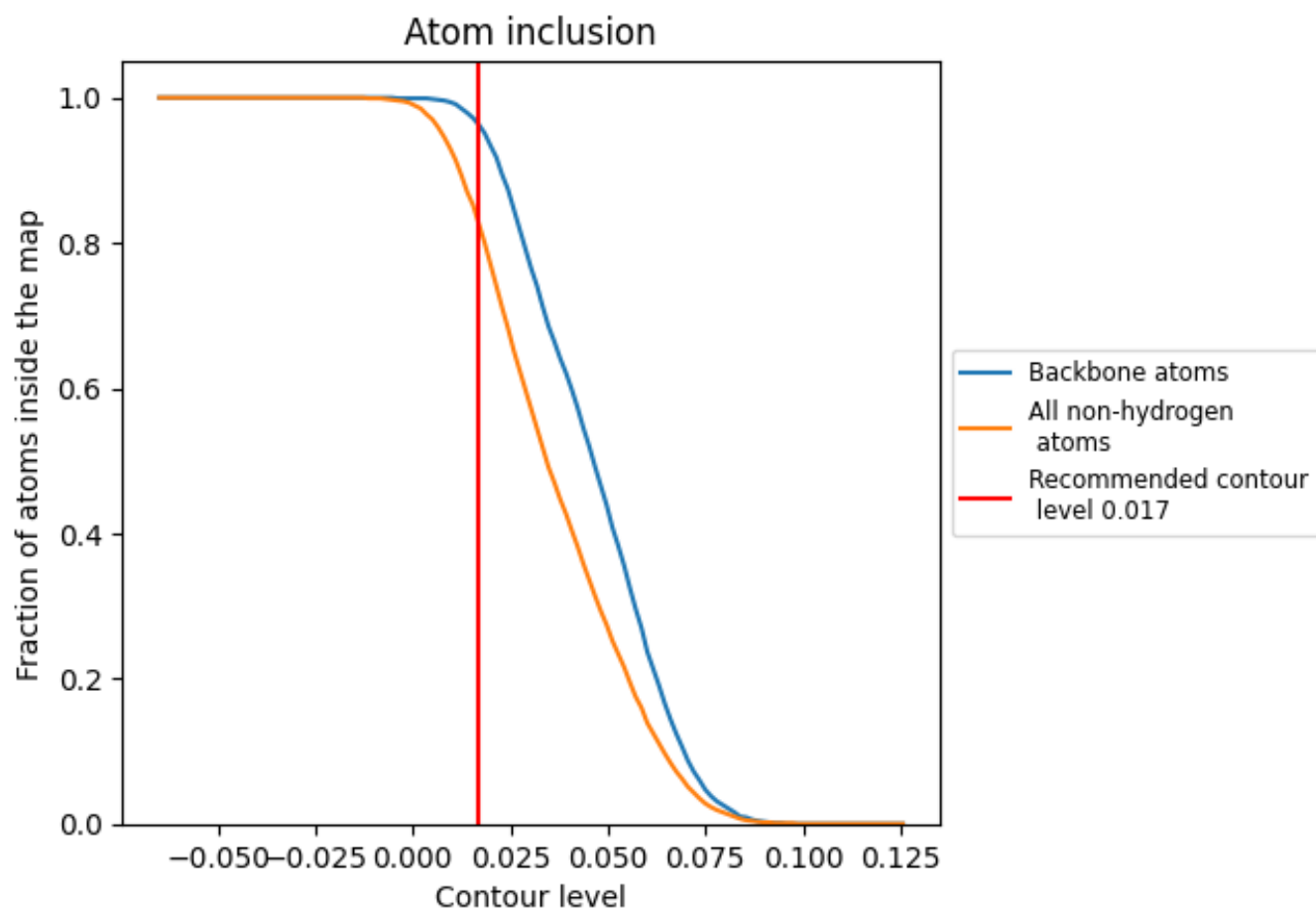
The images above show the model with each residue coloured according to its Q-score. This shows their resolvability in the map with higher Q-score values reflecting better resolvability. Please note: Q-score is calculating the resolvability of atoms, and thus high values are only expected at resolutions at which atoms can be resolved. Low Q-score values may therefore be expected for many entries.

## 9.3 Atom inclusion mapped to coordinate model [i](#)



The images above show the model with each residue coloured according to its atom inclusion. This shows to what extent they are inside the map at the recommended contour level (0.017).

## 9.4 Atom inclusion [i](#)



At the recommended contour level, 96% of all backbone atoms, 82% of all non-hydrogen atoms, are inside the map.

## 9.5 Map-model fit summary

The table lists the average atom inclusion at the recommended contour level (0.017) and Q-score for the entire model and for each chain.

Chain	Atom inclusion	Q-score
All	 0.8250	 0.2830
A	 0.8740	 0.3160
B	 0.8740	 0.3090
C	 0.6950	 0.2050

