



Full wwPDB EM Validation Report ⓘ

Nov 20, 2022 – 08:20 am GMT

PDB ID : 6HMS
EMDB ID : EMD-0244
Title : Cryo-EM map of DNA polymerase D from *Pyrococcus abyssi* in complex with DNA
Authors : Raia, P.; Carroni, M.; Sauguet, L.
Deposited on : 2018-09-12
Resolution : 7.10 Å(reported)

This is a Full wwPDB EM Validation Report for a publicly released PDB entry.

We welcome your comments at validation@mail.wwpdb.org

A user guide is available at

<https://www.wwpdb.org/validation/2017/EMValidationReportHelp>

with specific help available everywhere you see the ⓘ symbol.

The types of validation reports are described at

<http://www.wwpdb.org/validation/2017/FAQs#types>.

The following versions of software and data (see [references ⓘ](#)) were used in the production of this report:

EMDB validation analysis : 0.0.1.dev43
MolProbity : 4.02b-467
Percentile statistics : 20191225.v01 (using entries in the PDB archive December 25th 2019)
MapQ : 1.9.9
Ideal geometry (proteins) : Engh & Huber (2001)
Ideal geometry (DNA, RNA) : Parkinson et al. (1996)
Validation Pipeline (wwPDB-VP) : 2.31.2

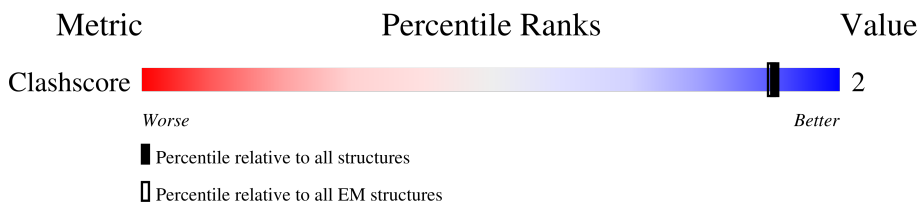
1 Overall quality at a glance i

The following experimental techniques were used to determine the structure:

ELECTRON MICROSCOPY

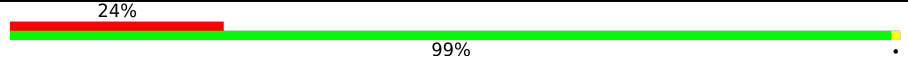
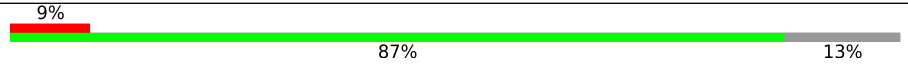
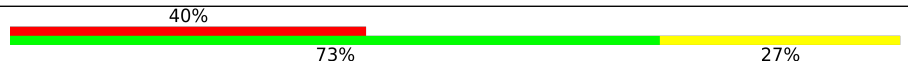

The reported resolution of this entry is 7.10 Å.

Percentile scores (ranging between 0-100) for global validation metrics of the entry are shown in the following graphic. The table shows the number of entries on which the scores are based.



Metric	Whole archive (#Entries)	EM structures (#Entries)
Clashscore	158937	4297

The table below summarises the geometric issues observed across the polymeric chains and their fit to the map. The red, orange, yellow and green segments of the bar indicate the fraction of residues that contain outliers for ≥ 3 , 2, 1 and 0 types of geometric quality criteria respectively. A grey segment represents the fraction of residues that are not modelled. The numeric value for each fraction is indicated below the corresponding segment, with a dot representing fractions $\leq 5\%$. The upper red bar (where present) indicates the fraction of residues that have poor fit to the EM map (all-atom inclusion $< 40\%$). The numeric value is given above the bar.

Mol	Chain	Length	Quality of chain
1	A	400	
2	B	1270	
3	P	15	
4	T	16	

2 Entry composition i

There are 6 unique types of molecules in this entry. The entry contains 2141 atoms, of which 0 are hydrogens and 0 are deuteriums.

In the tables below, the AltConf column contains the number of residues with at least one atom in alternate conformation and the Trace column contains the number of residues modelled with at most 2 atoms.

- Molecule 1 is a protein called DNA polymerase II small subunit.

Mol	Chain	Residues	Atoms		AltConf	Trace
1	A	400	Total	C	0	400
			400	400		

There are 6 discrepancies between the modelled and reference sequences:

Chain	Residue	Modelled	Actual	Comment	Reference
A	197	TYR	-	expression tag	UNP Q9V2F3
A	198	GLU	-	expression tag	UNP Q9V2F3
A	199	VAL	-	expression tag	UNP Q9V2F3
A	200	LYS	-	expression tag	UNP Q9V2F3
A	201	PHE	-	expression tag	UNP Q9V2F3
A	451	ALA	HIS	conflict	UNP Q9V2F3

- Molecule 2 is a protein called DNA polymerase II large subunit, DNA polymerase II large subunit.

Mol	Chain	Residues	Atoms		AltConf	Trace
2	B	1101	Total	C	0	1101
			1101	1101		

- Molecule 3 is a DNA chain called DNA (5'-D(*GP*AP*GP*AP*CP*GP*GP*GP*CP*CP*GP*CP*GP*TP*C)-3').

Mol	Chain	Residues	Atoms					AltConf	Trace
3	P	15	Total	C	N	O	P	0	0
			311	145	62	89	15		

- Molecule 4 is a DNA chain called DNA (5'-D(P*TP*GP*AP*CP*GP*CP*GP*GP*CP*CP*CP*GP*TP*CP*TP*C)-3').

Mol	Chain	Residues	Atoms					AltConf	Trace
4	T	16	Total	C	N	O	P	0	0
			324	153	57	98	16		

- Molecule 5 is FE (III) ION (three-letter code: FE) (formula: Fe).

Mol	Chain	Residues	Atoms		AltConf
5	A	1	Total	Fe	0
			1	1	

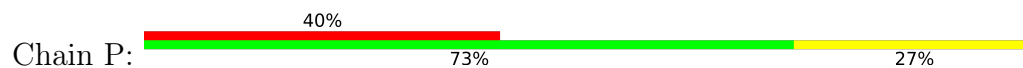
- Molecule 6 is ZINC ION (three-letter code: ZN) (formula: Zn).

Mol	Chain	Residues	Atoms		AltConf
6	A	1	Total	Zn	0
			1	1	
6	B	3	Total	Zn	0
			3	3	

ARG Q1177
 LYS F1194
 PRO
 GLU
 THR
 GLN
 LEU
 ILE
 THR
 LEU
 LEU
 ILE
 VAL
 ASN
 ASN
 PRO
 SER
 ASN
 ASP
 ARG
 LYS
 ILE
 CYS
 GLN
 ARG
 LEU
 VAL
 MET
 VAL
 ALA
 ARG
 THR
 GLY
 GLU
 VAL
 VAL
 ASN
 LYS
 SER
 GLY
 LEU
 LEU
 LEU
 GLU
 ASN
 LEU
 SER
 ASN
 GLY
 SER
 LYS
 LYS
 THR
 GLU
 LYS
 ALA
 GLU
 LYS
 LYS
 ALA
 GLU
 LYS
 PRO
 ARG
 LYS
 LYS
 SER
 ASP

GLU
 LYS
 PRO
 LYS
 LYS
 LYS
 ARG
 VAL
 SER
 LEU
 LEU
 GLU
 PHE
 PHE
 SER
 ARG
 LYS
 SER
 LYS

- Molecule 3: DNA (5'-D(*GP*AP*GP*AP*CP*GP*GP*GP*CP*CP*GP*CP*GP*TP*C)-3')



G1
 A2
 G3
 G6
 G7
 G8
 C9
 C10
 G13
 T14
 C15

- Molecule 4: DNA (5'-D(P*TP*GP*AP*CP*GP*CP*GP*GP*CP*CP*CP*GP*TP*CP*TP*C)-3')



T1
 G7
 G8
 C9
 C10
 C11
 G12
 T13
 C14
 T15
 C16

4 Experimental information

Property	Value	Source
EM reconstruction method	SINGLE PARTICLE	Depositor
Imposed symmetry	POINT, Not provided	
Number of particles used	8774	Depositor
Resolution determination method	FSC 0.143 CUT-OFF	Depositor
CTF correction method	PHASE FLIPPING AND AMPLITUDE CORRECTION	Depositor
Microscope	FEI TITAN KRIOS	Depositor
Voltage (kV)	300	Depositor
Electron dose ($e^-/\text{\AA}^2$)	1	Depositor
Minimum defocus (nm)	Not provided	
Maximum defocus (nm)	Not provided	
Magnification	Not provided	
Image detector	GATAN K2 QUANTUM (4k x 4k)	Depositor
Maximum map value	1.624	Depositor
Minimum map value	-0.658	Depositor
Average map value	0.005	Depositor
Map value standard deviation	0.077	Depositor
Recommended contour level	0.58	Depositor
Map size (Å)	299.2, 299.2, 299.2	wwPDB
Map dimensions	220, 220, 220	wwPDB
Map angles (°)	90.0, 90.0, 90.0	wwPDB
Pixel spacing (Å)	1.36, 1.36, 1.36	Depositor

5 Model quality [i](#)

5.1 Standard geometry [i](#)

Bond lengths and bond angles in the following residue types are not validated in this section: FE, ZN

The Z score for a bond length (or angle) is the number of standard deviations the observed value is removed from the expected value. A bond length (or angle) with $|Z| > 5$ is considered an outlier worth inspection. RMSZ is the root-mean-square of all Z scores of the bond lengths (or angles).

Mol	Chain	Bond lengths		Bond angles	
		RMSZ	# Z >5	RMSZ	# Z >5
3	P	1.22	3/349 (0.9%)	1.21	0/537
4	T	1.29	5/361 (1.4%)	1.20	0/554
All	All	1.25	8/710 (1.1%)	1.21	0/1091

All (8) bond length outliers are listed below:

Mol	Chain	Res	Type	Atoms	Z	Observed(Å)	Ideal(Å)
3	P	9	DC	C3'-O3'	-6.47	1.35	1.44
4	T	8	DG	C3'-O3'	-6.30	1.35	1.44
4	T	10	DC	C3'-O3'	-6.28	1.35	1.44
4	T	9	DC	C3'-O3'	-5.88	1.36	1.44
4	T	7	DG	C3'-O3'	-5.69	1.36	1.44
4	T	11	DC	C3'-O3'	-5.54	1.36	1.44
3	P	8	DG	C3'-O3'	-5.18	1.37	1.44
3	P	10	DC	C3'-O3'	-5.02	1.37	1.44

There are no bond angle outliers.

There are no chirality outliers.

There are no planarity outliers.

5.2 Too-close contacts [i](#)

In the following table, the Non-H and H(model) columns list the number of non-hydrogen atoms and hydrogen atoms in the chain respectively. The H(added) column lists the number of hydrogen atoms added and optimized by MolProbity. The Clashes column lists the number of clashes within the asymmetric unit, whereas Symm-Clashes lists symmetry-related clashes.

Mol	Chain	Non-H	H(model)	H(added)	Clashes	Symm-Clashes
1	A	400	0	0	2	0

Continued on next page...

Continued from previous page...

Mol	Chain	Non-H	H(model)	H(added)	Clashes	Symm-Clashes
2	B	1101	0	0	1	0
3	P	311	0	167	1	0
4	T	324	0	180	1	0
5	A	1	0	0	0	0
6	A	1	0	0	0	0
6	B	3	0	0	0	0
All	All	2141	0	347	4	0

The all-atom clashscore is defined as the number of clashes found per 1000 atoms (including hydrogen atoms). The all-atom clashscore for this structure is 2.

All (4) close contacts within the same asymmetric unit are listed below, sorted by their clash magnitude.

Atom-1	Atom-2	Interatomic distance (Å)	Clash overlap (Å)
3:P:6:DG:O6	4:T:10:DC:N4	2.45	0.49
1:A:458:ILE:CA	1:A:459:PRO:CA	2.94	0.45
1:A:482:ASN:CA	1:A:483:PRO:CA	2.95	0.44
2:B:389:ARG:CA	2:B:390:PRO:CA	2.99	0.41

There are no symmetry-related clashes.

5.3 Torsion angles [i](#)

5.3.1 Protein backbone [i](#)

There are no protein backbone outliers to report in this entry.

5.3.2 Protein sidechains [i](#)

There are no protein residues with a non-rotameric sidechain to report in this entry.

5.3.3 RNA [i](#)

There are no RNA molecules in this entry.

5.4 Non-standard residues in protein, DNA, RNA chains [i](#)

There are no non-standard protein/DNA/RNA residues in this entry.

5.5 Carbohydrates [i](#)

There are no monosaccharides in this entry.

5.6 Ligand geometry [i](#)

Of 5 ligands modelled in this entry, 5 are monoatomic - leaving 0 for Mogul analysis.

There are no bond length outliers.

There are no bond angle outliers.

There are no chirality outliers.

There are no torsion outliers.

There are no ring outliers.

No monomer is involved in short contacts.

5.7 Other polymers [i](#)

There are no such residues in this entry.

5.8 Polymer linkage issues [i](#)

There are no chain breaks in this entry.

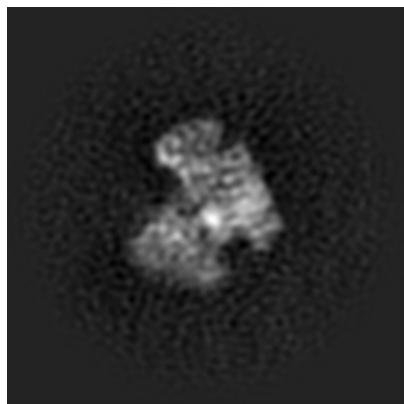
6 Map visualisation [i](#)

This section contains visualisations of the EMDB entry EMD-0244. These allow visual inspection of the internal detail of the map and identification of artifacts.

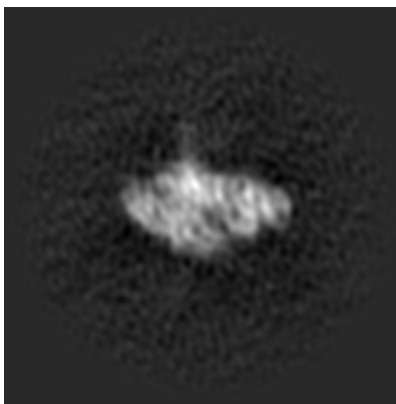
Images derived from a raw map, generated by summing the deposited half-maps, are presented below the corresponding image components of the primary map to allow further visual inspection and comparison with those of the primary map.

6.1 Orthogonal projections [i](#)

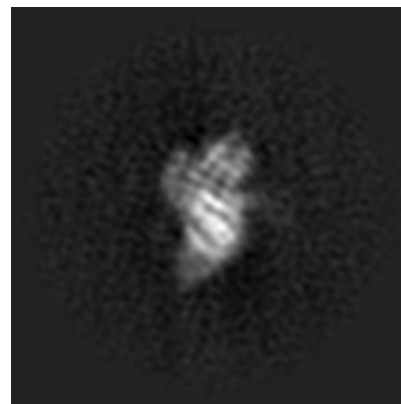
6.1.1 Primary map



X

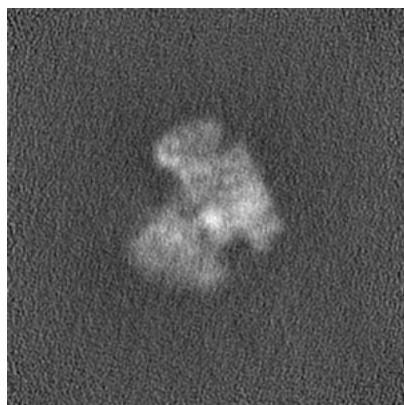


Y

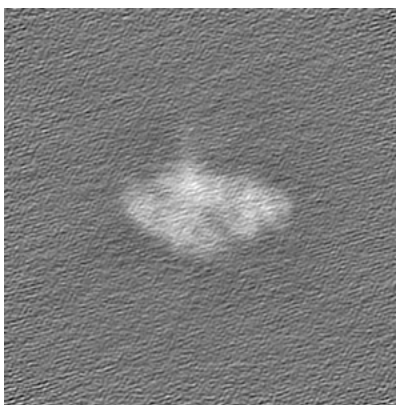


Z

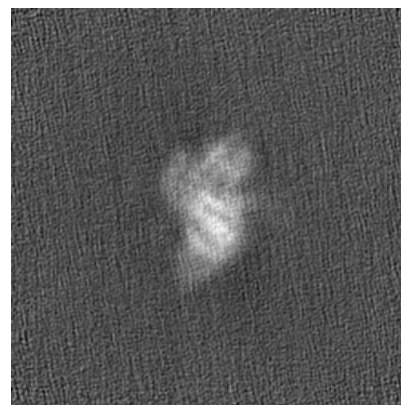
6.1.2 Raw map



X



Y

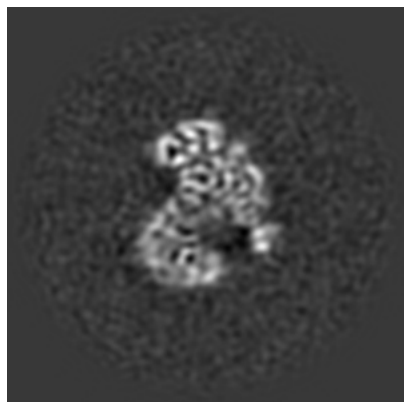


Z

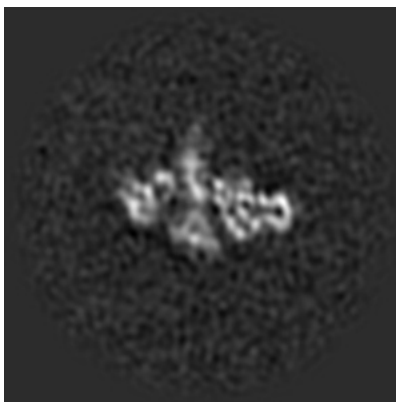
The images above show the map projected in three orthogonal directions.

6.2 Central slices [i](#)

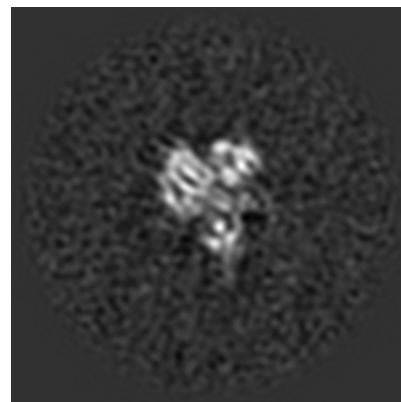
6.2.1 Primary map



X Index: 110

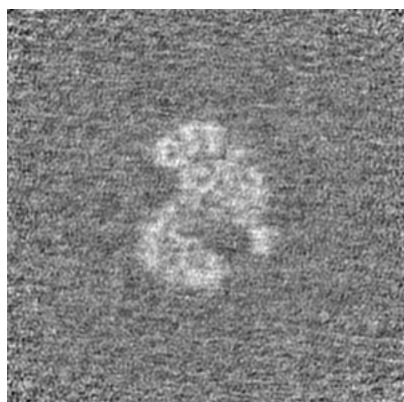


Y Index: 110

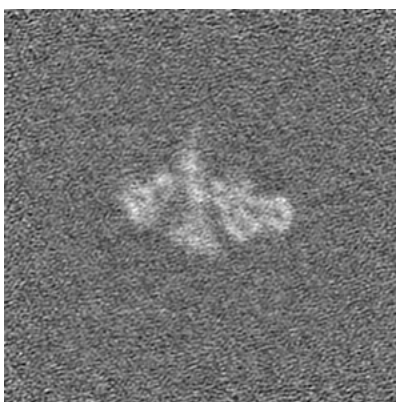


Z Index: 110

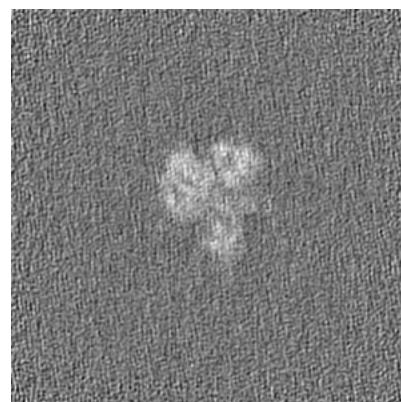
6.2.2 Raw map



X Index: 110



Y Index: 110

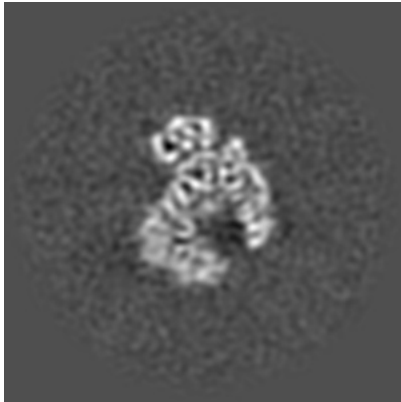


Z Index: 110

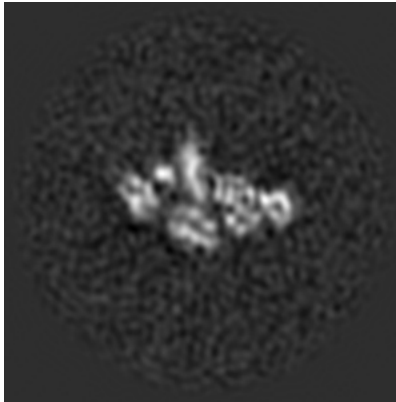
The images above show central slices of the map in three orthogonal directions.

6.3 Largest variance slices [i](#)

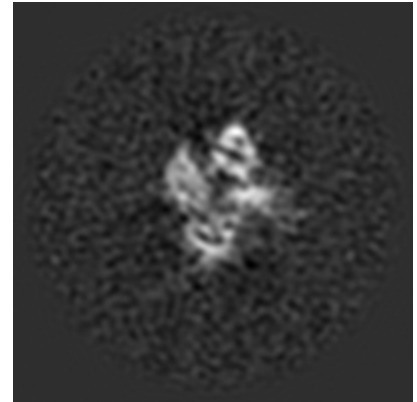
6.3.1 Primary map



X Index: 113

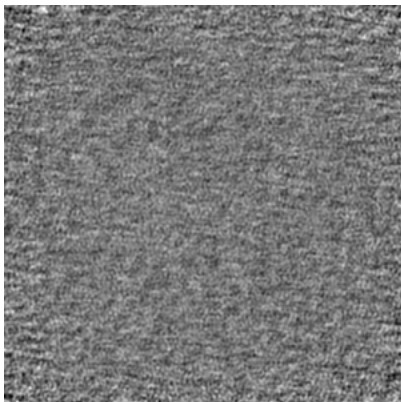


Y Index: 112

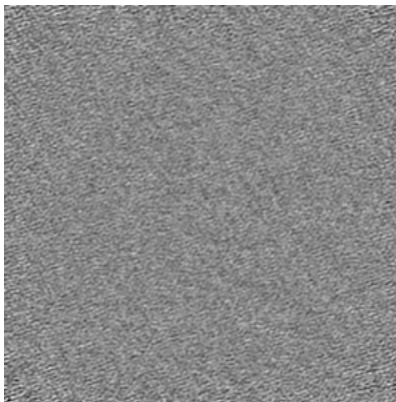


Z Index: 101

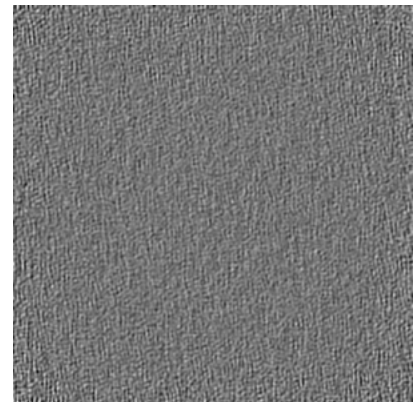
6.3.2 Raw map



X Index: 0



Y Index: 0

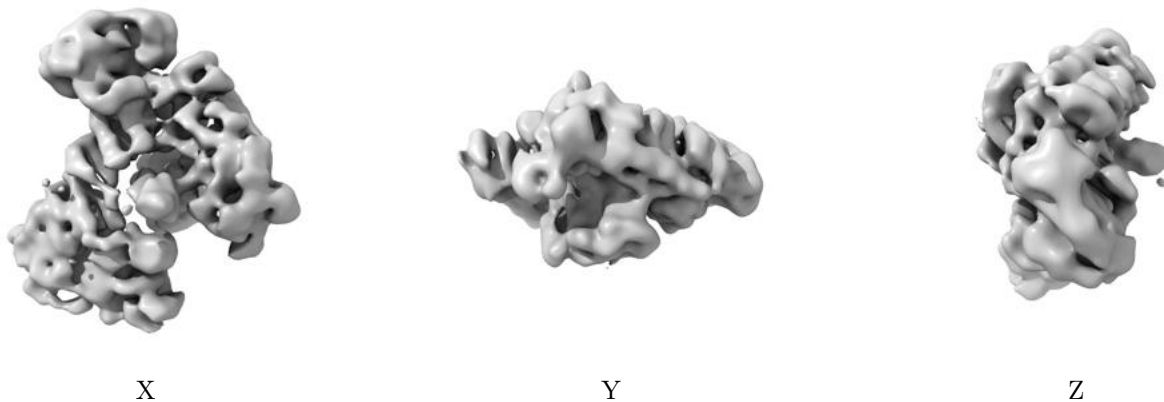


Z Index: 0

The images above show the largest variance slices of the map in three orthogonal directions.

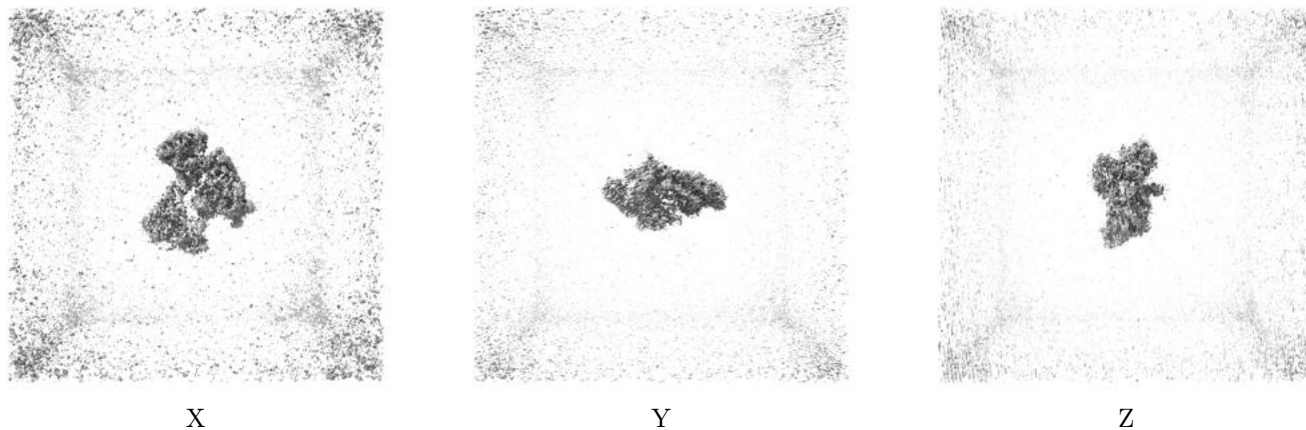
6.4 Orthogonal surface views [i](#)

6.4.1 Primary map



The images above show the 3D surface view of the map at the recommended contour level 0.58. These images, in conjunction with the slice images, may facilitate assessment of whether an appropriate contour level has been provided.

6.4.2 Raw map



These images show the 3D surface of the raw map. The raw map's contour level was selected so that its surface encloses the same volume as the primary map does at its recommended contour level.

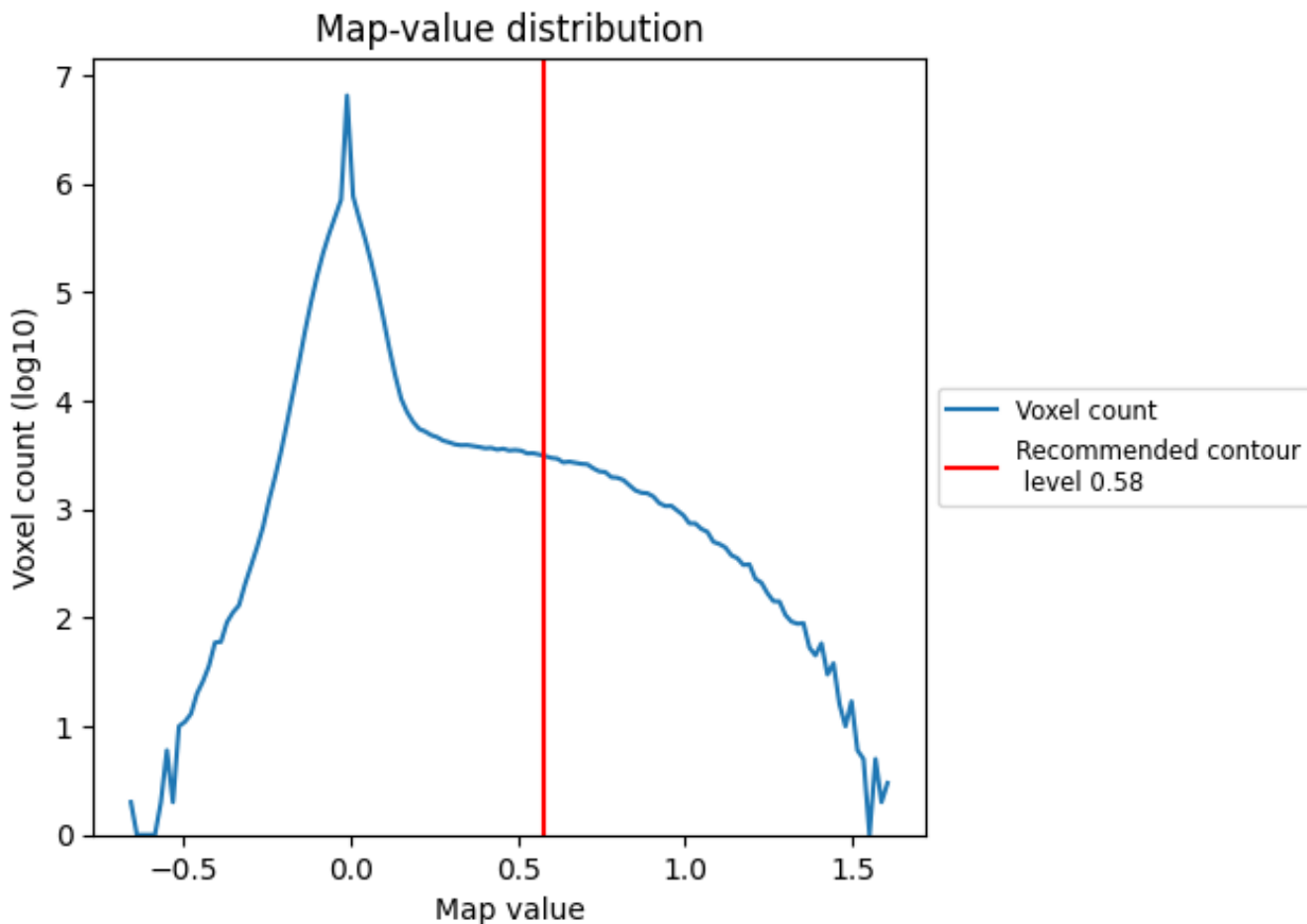
6.5 Mask visualisation [i](#)

This section was not generated. No masks/segmentation were deposited.

7 Map analysis [i](#)

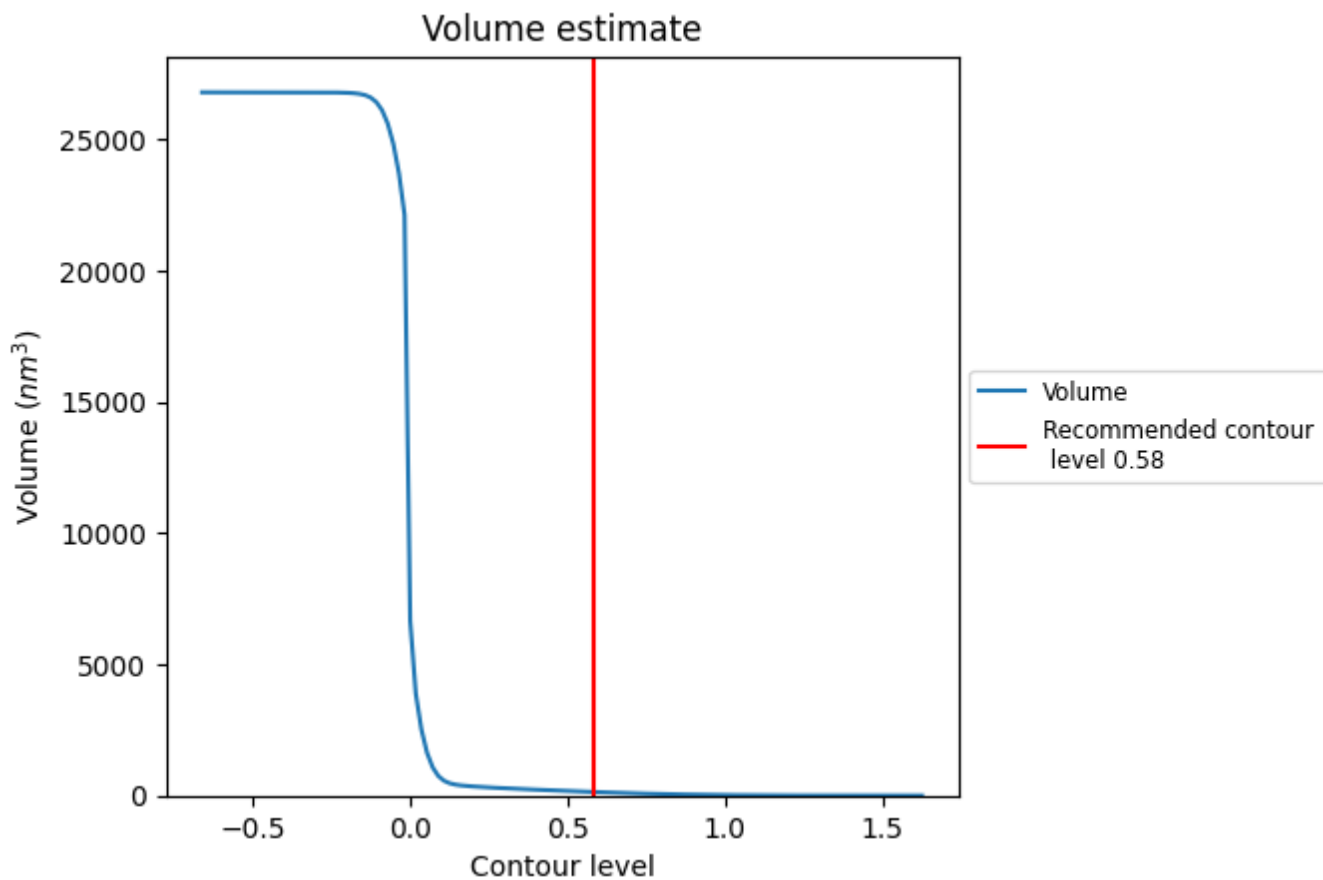
This section contains the results of statistical analysis of the map.

7.1 Map-value distribution [i](#)



The map-value distribution is plotted in 128 intervals along the x-axis. The y-axis is logarithmic. A spike in this graph at zero usually indicates that the volume has been masked.

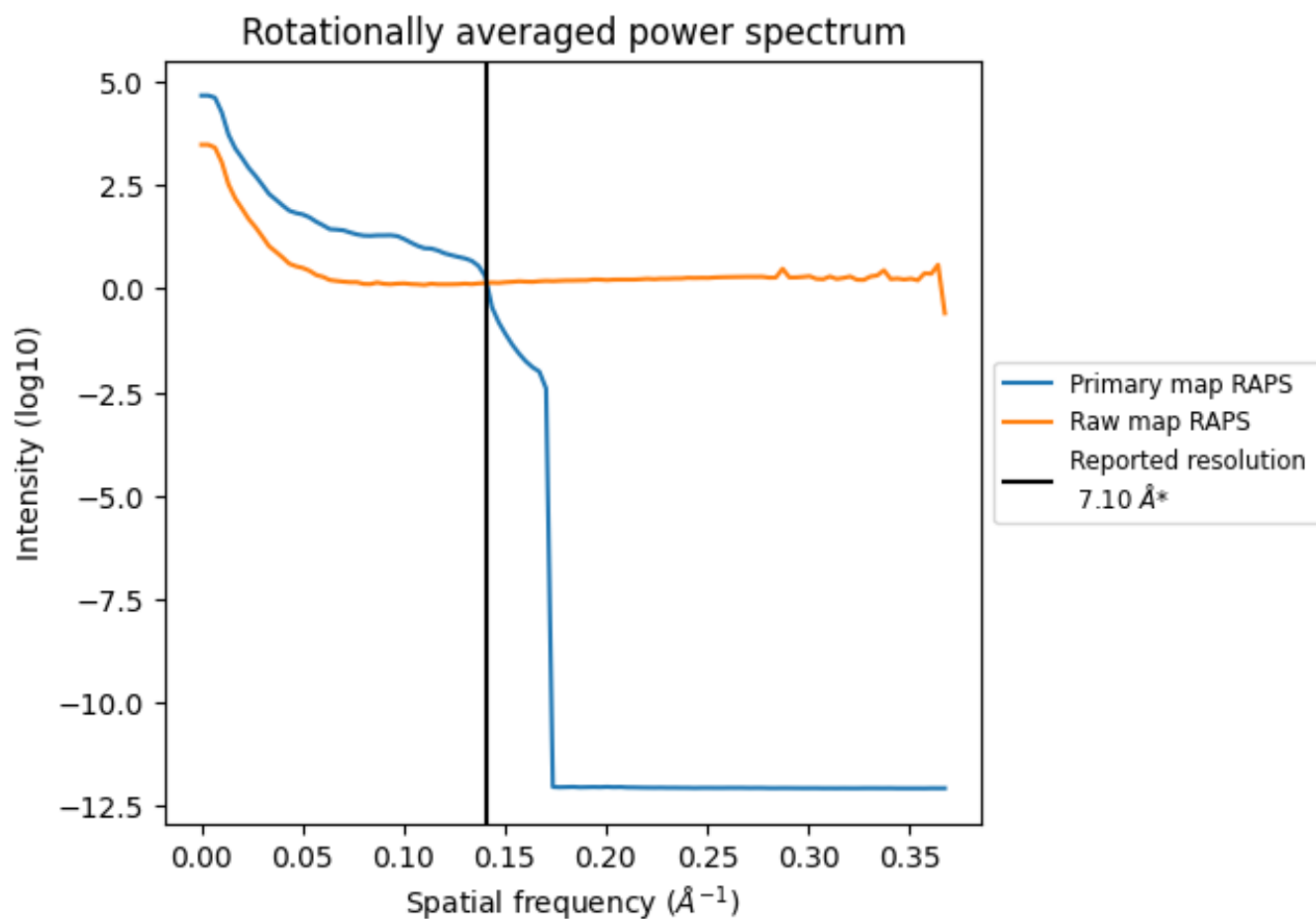
7.2 Volume estimate [i](#)



The volume at the recommended contour level is 137 nm³; this corresponds to an approximate mass of 124 kDa.

The volume estimate graph shows how the enclosed volume varies with the contour level. The recommended contour level is shown as a vertical line and the intersection between the line and the curve gives the volume of the enclosed surface at the given level.

7.3 Rotationally averaged power spectrum [i](#)

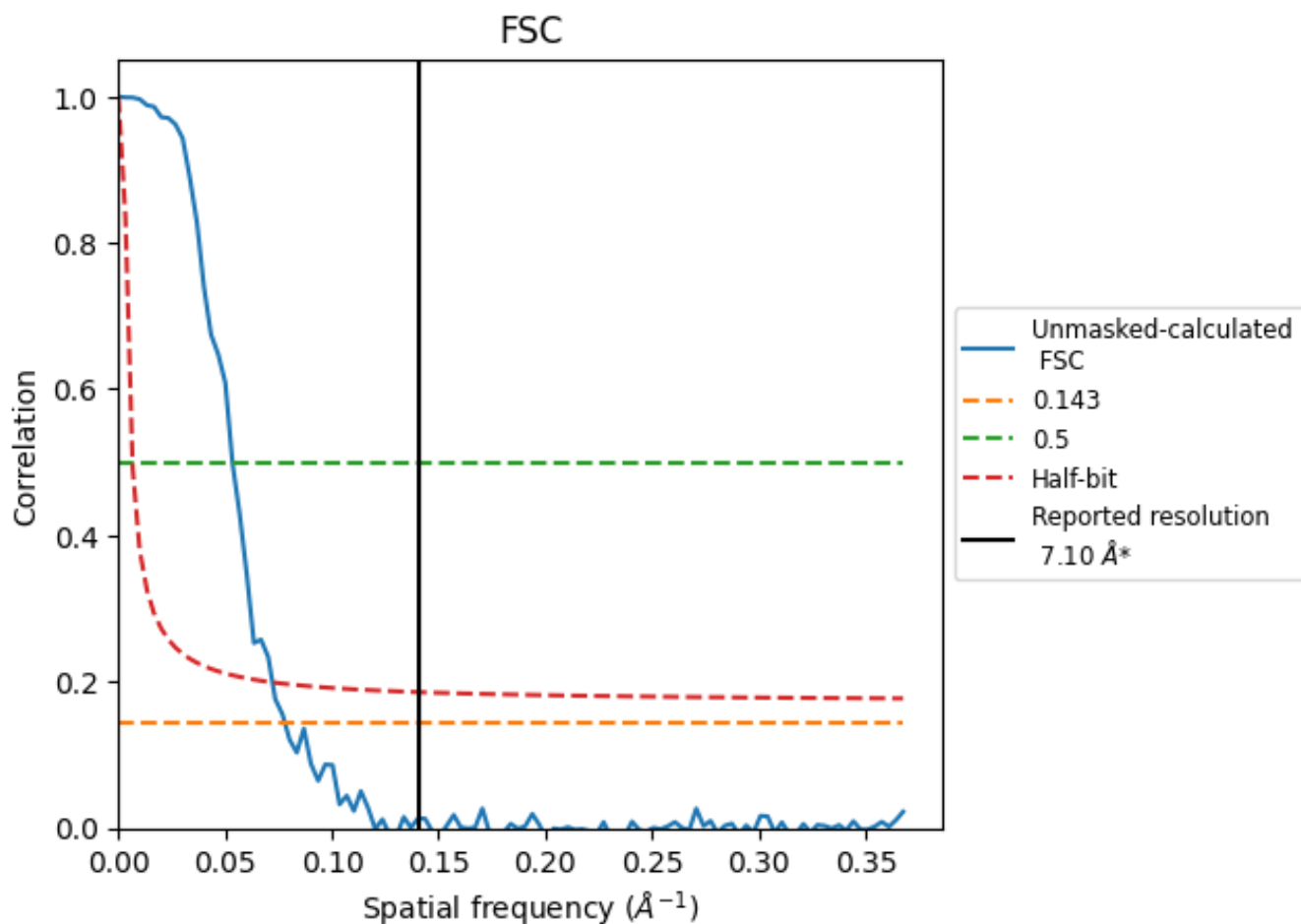


*Reported resolution corresponds to spatial frequency of 0.141 Å⁻¹

8 Fourier-Shell correlation [i](#)

Fourier-Shell Correlation (FSC) is the most commonly used method to estimate the resolution of single-particle and subtomogram-averaged maps. The shape of the curve depends on the imposed symmetry, mask and whether or not the two 3D reconstructions used were processed from a common reference. The reported resolution is shown as a black line. A curve is displayed for the half-bit criterion in addition to lines showing the 0.143 gold standard cut-off and 0.5 cut-off.

8.1 FSC [i](#)



*Reported resolution corresponds to spatial frequency of 0.141 Å⁻¹

8.2 Resolution estimates [i](#)

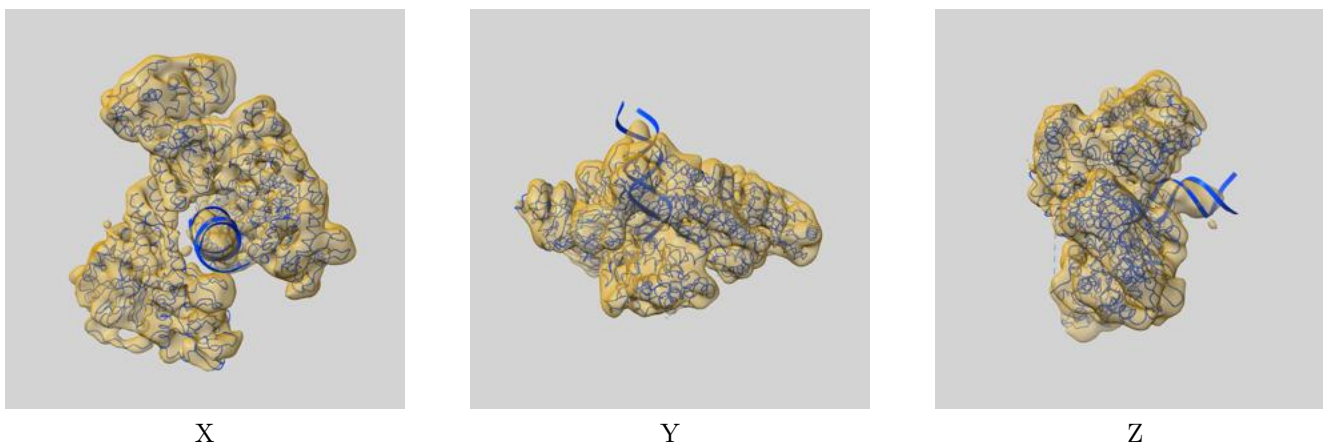
Resolution estimate (Å)	Estimation criterion (FSC cut-off)		
	0.143	0.5	Half-bit
Reported by author	7.10	-	-
Author-provided FSC curve	-	-	-
Unmasked-calculated*	12.82	18.73	13.85

*Resolution estimate based on FSC curve calculated by comparison of deposited half-maps. The value from deposited half-maps intersecting FSC 0.143 CUT-OFF 12.82 differs from the reported value 7.1 by more than 10 %

9 Map-model fit [i](#)

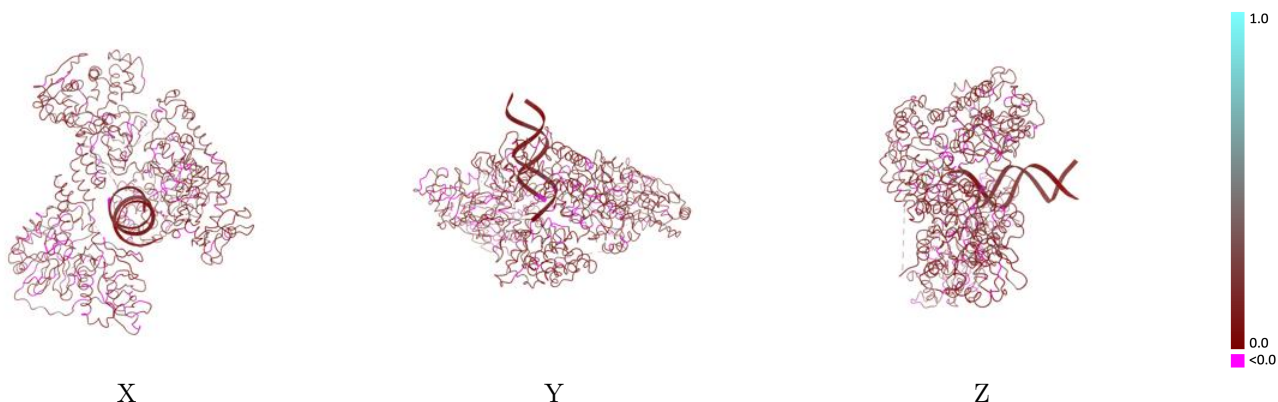
This section contains information regarding the fit between EMDB map EMD-0244 and PDB model 6HMS. Per-residue inclusion information can be found in section 3 on page 5.

9.1 Map-model overlay [i](#)



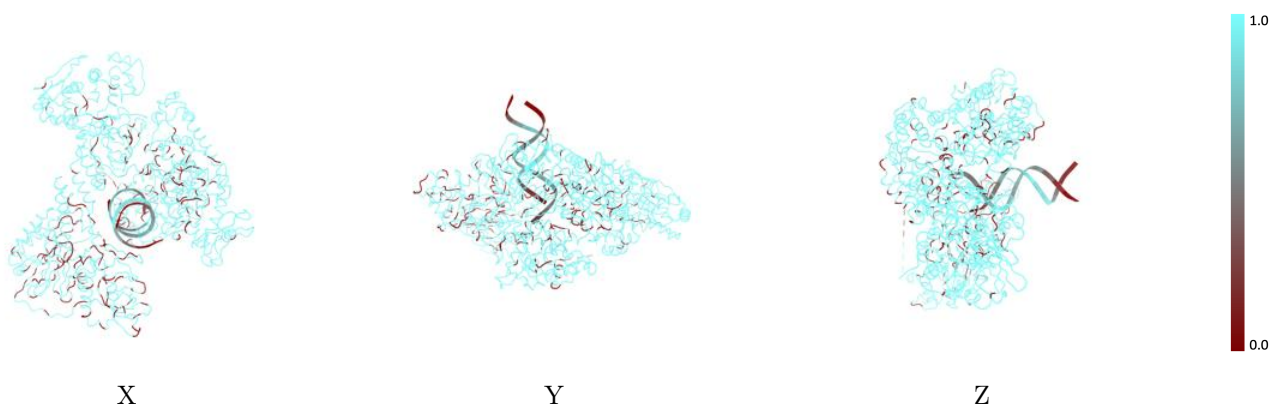
The images above show the 3D surface view of the map at the recommended contour level 0.58 at 50% transparency in yellow overlaid with a ribbon representation of the model coloured in blue. These images allow for the visual assessment of the quality of fit between the atomic model and the map.

9.2 Q-score mapped to coordinate model [i](#)



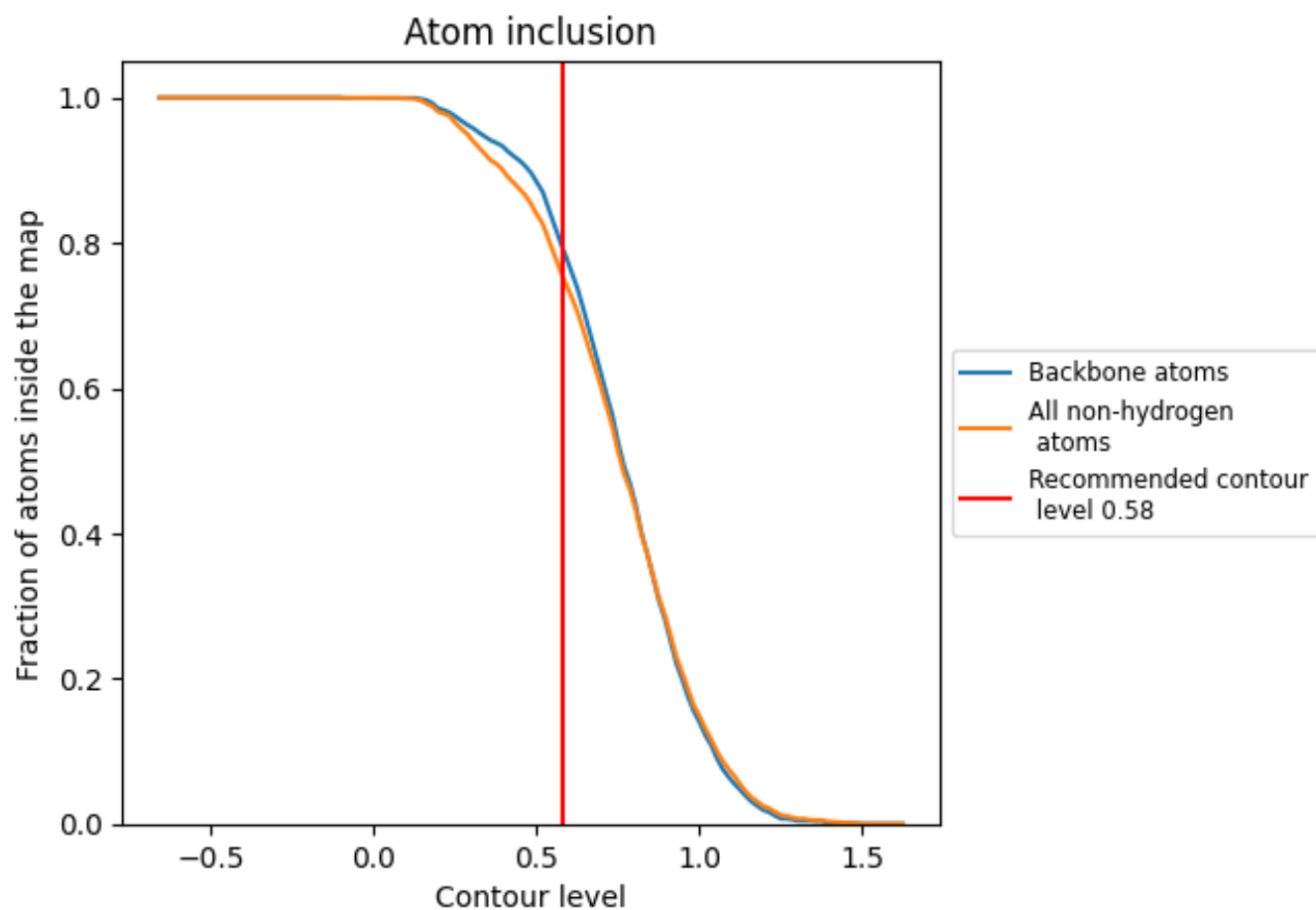
The images above show the model with each residue coloured according to its Q-score. This shows their resolvability in the map with higher Q-score values reflecting better resolvability. Please note: Q-score is calculating the resolvability of atoms, and thus high values are only expected at resolutions at which atoms can be resolved. Low Q-score values may therefore be expected for many entries.

9.3 Atom inclusion mapped to coordinate model [i](#)



The images above show the model with each residue coloured according to its atom inclusion. This shows to what extent they are inside the map at the recommended contour level (0.58).











9.4 Atom inclusion [i](#)



At the recommended contour level, 79% of all backbone atoms, 75% of all non-hydrogen atoms, are inside the map.

9.5 Map-model fit summary [i](#)

The table lists the average atom inclusion at the recommended contour level (0.58) and Q-score for the entire model and for each chain.

Chain	Atom inclusion	Q-score
All	 0.7534	 0.1460
A	 0.7662	 0.1270
B	 0.8976	 0.1570
P	 0.4952	 0.1440
T	 0.4938	 0.1360

