



# Full wwPDB X-ray Structure Validation Report ⓘ

Jun 22, 2024 – 08:47 PM EDT

PDB ID : 6GNK  
Title : Exoenzyme S from *Pseudomonas aeruginosa* in complex with human 14-3-3 protein beta, trimeric crystal form bound to Carba-NAD  
Authors : Karlberg, T.; Pinto, A.F.; Hornyak, P.; Thorsell, A.G.; Nareoja, K.; Schuler, H.  
Deposited on : 2018-05-31  
Resolution : 2.55 Å(reported)

This is a Full wwPDB X-ray Structure Validation Report for a publicly released PDB entry.

We welcome your comments at [validation@mail.wwpdb.org](mailto:validation@mail.wwpdb.org)

A user guide is available at

<https://www.wwpdb.org/validation/2017/XrayValidationReportHelp>

with specific help available everywhere you see the ⓘ symbol.

The types of validation reports are described at

<http://www.wwpdb.org/validation/2017/FAQs#types>.

---

The following versions of software and data (see [references ⓘ](#)) were used in the production of this report:

MolProbity : 4.02b-467  
Mogul : 2022.3.0, CSD as543be (2022)  
Xtriage (Phenix) : 1.20.1  
EDS : 2.37.1  
buster-report : 1.1.7 (2018)  
Percentile statistics : 20191225.v01 (using entries in the PDB archive December 25th 2019)  
Refmac : 5.8.0158  
CCP4 : 7.0.044 (Gargrove)  
Ideal geometry (proteins) : Engh & Huber (2001)  
Ideal geometry (DNA, RNA) : Parkinson et al. (1996)  
Validation Pipeline (wwPDB-VP) : 2.37.1

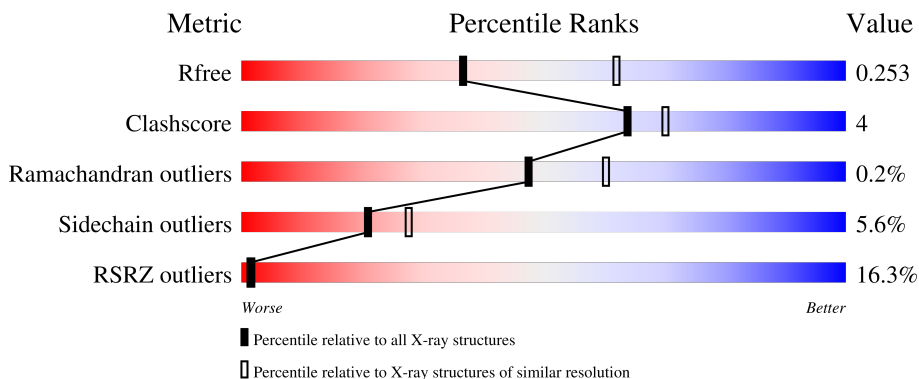
# 1 Overall quality at a glance

The following experimental techniques were used to determine the structure:

*X-RAY DIFFRACTION*

The reported resolution of this entry is 2.55 Å.

Percentile scores (ranging between 0-100) for global validation metrics of the entry are shown in the following graphic. The table shows the number of entries on which the scores are based.



Metric	Whole archive (#Entries)	Similar resolution (#Entries, resolution range(Å))
$R_{free}$	130704	1284 (2.56-2.52)
Clashscore	141614	1332 (2.56-2.52)
Ramachandran outliers	138981	1315 (2.56-2.52)
Sidechain outliers	138945	1315 (2.56-2.52)
RSRZ outliers	127900	1272 (2.56-2.52)

The table below summarises the geometric issues observed across the polymeric chains and their fit to the electron density. The red, orange, yellow and green segments of the lower bar indicate the fraction of residues that contain outliers for  $\geq 3$ , 2, 1 and 0 types of geometric quality criteria respectively. A grey segment represents the fraction of residues that are not modelled. The numeric value for each fraction is indicated below the corresponding segment, with a dot representing fractions  $\leq 5\%$ . The upper red bar (where present) indicates the fraction of residues that have poor fit to the electron density. The numeric value is given above the bar.

Mol	Chain	Length	Quality of chain
1	A	243	
1	B	243	
2	C	244	

## 2 Entry composition

There are 5 unique types of molecules in this entry. The entry contains 5282 atoms, of which 0 are hydrogens and 0 are deuteriums.

In the tables below, the ZeroOcc column contains the number of atoms modelled with zero occupancy, the AltConf column contains the number of residues with at least one atom in alternate conformation and the Trace column contains the number of residues modelled with at most 2 atoms.

- Molecule 1 is a protein called 14-3-3 protein beta/alpha.

Mol	Chain	Residues	Atoms					ZeroOcc	AltConf	Trace
			Total	C	N	O	S			
1	A	232	1872	1170	315	378	9	0	0	0
1	B	230	1849	1158	309	373	9	0	0	0

There are 18 discrepancies between the modelled and reference sequences:

Chain	Residue	Modelled	Actual	Comment	Reference
A	235	GLU	-	expression tag	UNP P31946
A	236	ASN	-	expression tag	UNP P31946
A	237	LEU	-	expression tag	UNP P31946
A	238	TYR	-	expression tag	UNP P31946
A	239	PHE	-	expression tag	UNP P31946
A	240	GLN	-	expression tag	UNP P31946
A	241	SER	-	expression tag	UNP P31946
A	242	LEU	-	expression tag	UNP P31946
A	243	GLU	-	expression tag	UNP P31946
B	235	GLU	-	expression tag	UNP P31946
B	236	ASN	-	expression tag	UNP P31946
B	237	LEU	-	expression tag	UNP P31946
B	238	TYR	-	expression tag	UNP P31946
B	239	PHE	-	expression tag	UNP P31946
B	240	GLN	-	expression tag	UNP P31946
B	241	SER	-	expression tag	UNP P31946
B	242	LEU	-	expression tag	UNP P31946
B	243	GLU	-	expression tag	UNP P31946

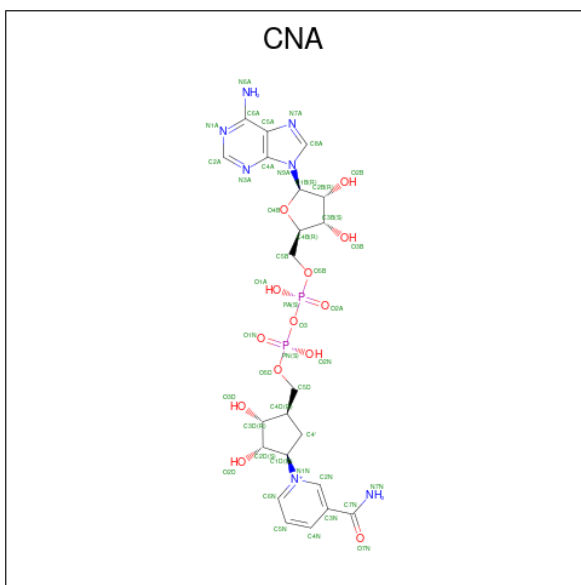
- Molecule 2 is a protein called Exoenzyme S.

Mol	Chain	Residues	Atoms					ZeroOcc	AltConf	Trace
			Total	C	N	O	S			
2	C	200	1483	913	268	299	3	0	0	0

There are 25 discrepancies between the modelled and reference sequences:

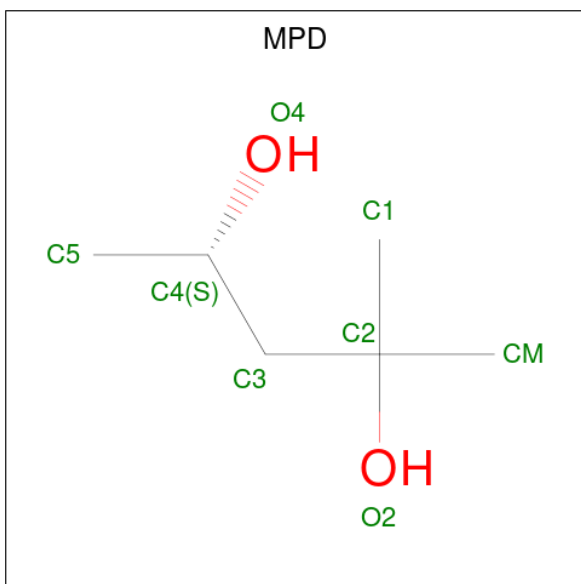
Chain	Residue	Modelled	Actual	Comment	Reference
C	210	MET	-	initiating methionine	UNP Q93SQ1
C	211	GLY	-	expression tag	UNP Q93SQ1
C	212	SER	-	expression tag	UNP Q93SQ1
C	213	SER	-	expression tag	UNP Q93SQ1
C	214	HIS	-	expression tag	UNP Q93SQ1
C	215	HIS	-	expression tag	UNP Q93SQ1
C	216	HIS	-	expression tag	UNP Q93SQ1
C	217	HIS	-	expression tag	UNP Q93SQ1
C	218	HIS	-	expression tag	UNP Q93SQ1
C	219	HIS	-	expression tag	UNP Q93SQ1
C	220	SER	-	expression tag	UNP Q93SQ1
C	221	GLN	-	expression tag	UNP Q93SQ1
C	222	ASP	-	expression tag	UNP Q93SQ1
C	223	PRO	-	expression tag	UNP Q93SQ1
C	224	ASN	-	expression tag	UNP Q93SQ1
C	225	SER	-	expression tag	UNP Q93SQ1
C	226	GLU	-	expression tag	UNP Q93SQ1
C	227	ASN	-	expression tag	UNP Q93SQ1
C	228	LEU	-	expression tag	UNP Q93SQ1
C	229	TYR	-	expression tag	UNP Q93SQ1
C	230	PHE	-	expression tag	UNP Q93SQ1
C	231	GLN	-	expression tag	UNP Q93SQ1
C	232	GLY	-	expression tag	UNP Q93SQ1
C	379	ALA	GLU	engineered mutation	UNP Q93SQ1
C	381	ALA	GLU	engineered mutation	UNP Q93SQ1

- Molecule 3 is CARBA-NICOTINAMIDE-ADENINE-DINUCLEOTIDE (three-letter code: CNA) (formula:  $C_{22}H_{30}N_7O_{13}P_2$ ).



Mol	Chain	Residues	Atoms					ZeroOcc	AltConf
			Total	C	N	O	P		
3	C	1	44	22	7	13	2	0	0

- Molecule 4 is (4S)-2-METHYL-2,4-PENTANEDIOL (three-letter code: MPD) (formula:  $C_6H_{14}O_2$ ).



Mol	Chain	Residues	Atoms			ZeroOcc	AltConf
			Total	C	O		
4	C	1	8	6	2	0	0

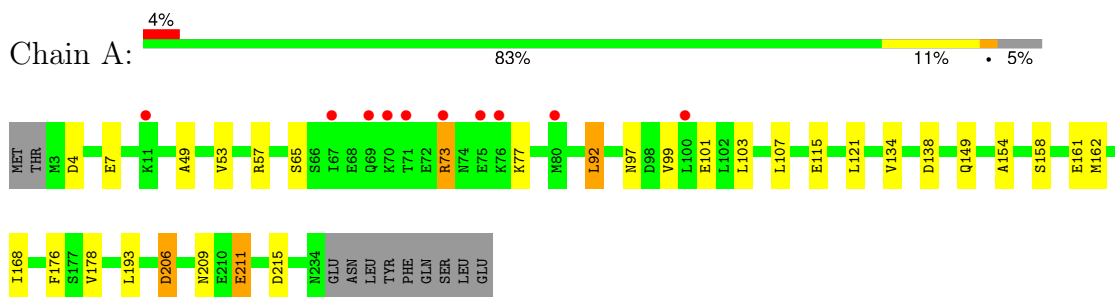
- Molecule 5 is water.

Mol	Chain	Residues	Atoms	ZeroOcc	AltConf
5	A	12	Total O 12 12	0	0
5	C	14	Total O 14 14	0	0

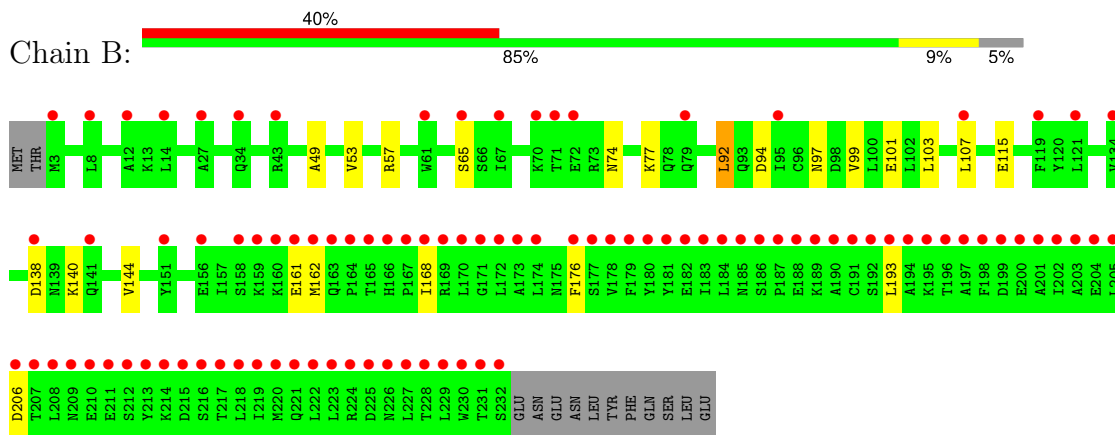
### 3 Residue-property plots [i](#)

These plots are drawn for all protein, RNA, DNA and oligosaccharide chains in the entry. The first graphic for a chain summarises the proportions of the various outlier classes displayed in the second graphic. The second graphic shows the sequence view annotated by issues in geometry and electron density. Residues are color-coded according to the number of geometric quality criteria for which they contain at least one outlier: green = 0, yellow = 1, orange = 2 and red = 3 or more. A red dot above a residue indicates a poor fit to the electron density ( $RSRZ > 2$ ). Stretches of 2 or more consecutive residues without any outlier are shown as a green connector. Residues present in the sample, but not in the model, are shown in grey.

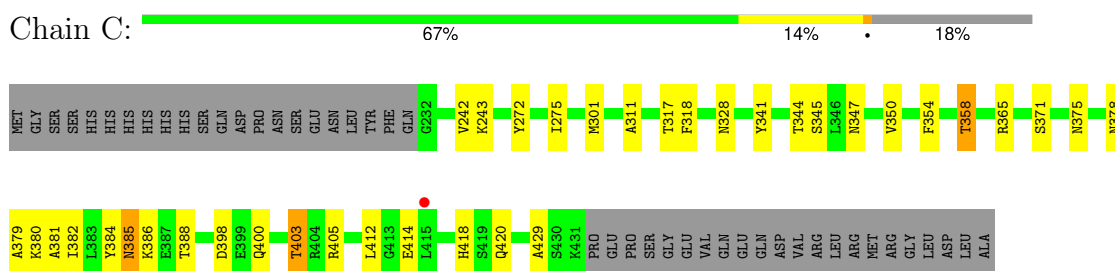
- Molecule 1: 14-3-3 protein beta/alpha



- Molecule 1: 14-3-3 protein beta/alpha



- Molecule 2: Exoenzyme S



## 4 Data and refinement statistics

Property	Value	Source
Space group	C 1 2 1	Depositor
Cell constants a, b, c, $\alpha$ , $\beta$ , $\gamma$	160.92Å 56.77Å 120.35Å 90.00° 126.45° 90.00°	Depositor
Resolution (Å)	48.40 – 2.55 48.40 – 2.55	Depositor EDS
% Data completeness (in resolution range)	99.7 (48.40-2.55) 99.7 (48.40-2.55)	Depositor EDS
$R_{merge}$	0.07	Depositor
$R_{sym}$	(Not available)	Depositor
$\langle I/\sigma(I) \rangle$ <sup>1</sup>	1.07 (at 2.54Å)	Xtrriage
Refinement program	BUSTER 2.10.3	Depositor
R, $R_{free}$	0.215 , 0.239 0.225 , 0.253	Depositor DCC
$R_{free}$ test set	1439 reflections (5.00%)	wwPDB-VP
Wilson B-factor (Å <sup>2</sup> )	75.9	Xtrriage
Anisotropy	0.416	Xtrriage
Bulk solvent $k_{sol}$ (e/Å <sup>3</sup> ), $B_{sol}$ (Å <sup>2</sup> )	0.31 , 83.4	EDS
L-test for twinning <sup>2</sup>	$\langle  L  \rangle = 0.51$ , $\langle L^2 \rangle = 0.35$	Xtrriage
Estimated twinning fraction	No twinning to report.	Xtrriage
$F_o, F_c$ correlation	0.95	EDS
Total number of atoms	5282	wwPDB-VP
Average B, all atoms (Å <sup>2</sup> )	114.0	wwPDB-VP

Xtrriage's analysis on translational NCS is as follows: *The largest off-origin peak in the Patterson function is 5.12% of the height of the origin peak. No significant pseudotranslation is detected.*

<sup>1</sup>Intensities estimated from amplitudes.

<sup>2</sup>Theoretical values of  $\langle |L| \rangle$ ,  $\langle L^2 \rangle$  for acentric reflections are 0.5, 0.333 respectively for untwinned datasets, and 0.375, 0.2 for perfectly twinned datasets.



## 5 Model quality

### 5.1 Standard geometry

Bond lengths and bond angles in the following residue types are not validated in this section: MPD, CNA

The Z score for a bond length (or angle) is the number of standard deviations the observed value is removed from the expected value. A bond length (or angle) with  $|Z| > 5$  is considered an outlier worth inspection. RMSZ is the root-mean-square of all Z scores of the bond lengths (or angles).

Mol	Chain	Bond lengths		Bond angles	
		RMSZ	# Z  >5	RMSZ	# Z  >5
1	A	0.50	0/1899	0.61	0/2556
1	B	0.47	0/1876	0.59	0/2526
2	C	0.53	0/1500	0.75	0/2014
All	All	0.50	0/5275	0.65	0/7096

There are no bond length outliers.

There are no bond angle outliers.

There are no chirality outliers.

There are no planarity outliers.

### 5.2 Too-close contacts

In the following table, the Non-H and H(model) columns list the number of non-hydrogen atoms and hydrogen atoms in the chain respectively. The H(added) column lists the number of hydrogen atoms added and optimized by MolProbity. The Clashes column lists the number of clashes within the asymmetric unit, whereas Symm-Clashes lists symmetry-related clashes.

Mol	Chain	Non-H	H(model)	H(added)	Clashes	Symm-Clashes
1	A	1872	0	1847	15	0
1	B	1849	0	1824	7	0
2	C	1483	0	1456	26	0
3	C	44	0	27	3	0
4	C	8	0	14	0	0
5	A	12	0	0	0	0
5	C	14	0	0	3	0
All	All	5282	0	5168	44	0

The all-atom clashscore is defined as the number of clashes found per 1000 atoms (including hydrogen atoms). The all-atom clashscore for this structure is 4.

All (44) close contacts within the same asymmetric unit are listed below, sorted by their clash magnitude.

Atom-1	Atom-2	Interatomic distance (Å)	Clash overlap (Å)
2:C:375:ASN:HD21	2:C:378:ASN:HD22	1.24	0.84
1:A:215:ASP:OD1	2:C:418:HIS:HD2	1.65	0.80
2:C:384:TYR:HB3	2:C:388:THR:HG21	1.77	0.66
2:C:350:VAL:HG11	2:C:379:ALA:HA	1.79	0.65
2:C:403:THR:HG22	5:C:609:HOH:O	2.02	0.58
1:B:140:LYS:O	1:B:144:VAL:HG23	2.05	0.57
2:C:358:THR:HG23	5:C:604:HOH:O	2.03	0.57
2:C:398:ASP:HB3	2:C:400:GLN:H	1.71	0.56
2:C:385:ASN:O	2:C:388:THR:HG22	2.08	0.54
1:A:215:ASP:OD1	2:C:418:HIS:CD2	2.53	0.54
2:C:358:THR:CG2	5:C:604:HOH:O	2.56	0.53
1:B:74:ASN:HD22	1:B:77:LYS:HG3	1.74	0.53
2:C:328:ASN:HD22	2:C:405:ARG:HH22	1.57	0.52
2:C:347:ASN:HD22	2:C:350:VAL:H	1.59	0.49
1:A:158:SER:HA	1:A:162:MET:HE3	1.95	0.48
2:C:385:ASN:HD22	2:C:386:LYS:H	1.62	0.48
2:C:354:PHE:CE1	3:C:501:CNA:H19	2.50	0.47
1:A:73:ARG:HH21	1:A:77:LYS:HZ3	1.64	0.46
1:A:209:ASN:ND2	1:A:211:GLU:HB2	2.31	0.46
2:C:365:ARG:HG3	2:C:412:LEU:HD21	1.97	0.46
1:B:57:ARG:HB3	1:B:92:LEU:HG	1.96	0.45
1:A:178:VAL:HG11	2:C:429:ALA:HB1	1.98	0.45
1:A:4:ASP:HB3	1:A:7:GLU:CD	2.37	0.45
2:C:317:THR:HG21	2:C:382:ILE:HB	1.99	0.45
1:B:49:ALA:O	1:B:53:VAL:HG23	2.17	0.44
1:A:49:ALA:O	1:A:53:VAL:HG23	2.17	0.44
1:B:103:LEU:HA	1:B:107:LEU:HB2	1.99	0.44
2:C:311:ALA:O	2:C:365:ARG:HD2	2.18	0.43
1:A:115:GLU:HG2	1:A:168:ILE:HD12	2.01	0.43
2:C:371:SER:HB3	2:C:380:LYS:HA	2.01	0.43
1:A:206:ASP:HA	2:C:318:PHE:HE1	1.83	0.43
1:B:162:MET:HE3	1:B:168:ILE:HB	2.00	0.43
3:C:501:CNA:H25	3:C:501:CNA:H18	1.87	0.43
1:A:103:LEU:HA	1:A:107:LEU:HB2	2.00	0.43
1:A:57:ARG:HB3	1:A:92:LEU:HG	2.01	0.43
1:A:92:LEU:HD13	1:A:134:VAL:HG11	2.01	0.42
1:B:115:GLU:HG2	1:B:168:ILE:HD12	2.01	0.42
2:C:345:SER:HB2	3:C:501:CNA:H29	2.01	0.42
1:A:206:ASP:HA	2:C:318:PHE:CE1	2.55	0.42
2:C:272:TYR:OH	2:C:341:TYR:HB2	2.20	0.42

*Continued on next page...*

Continued from previous page...

Atom-1	Atom-2	Interatomic distance (Å)	Clash overlap (Å)
2:C:301:MET:HE3	2:C:341:TYR:CE1	2.56	0.41
2:C:375:ASN:HD21	2:C:378:ASN:ND2	2.05	0.41
1:A:121:LEU:HB3	1:A:154:ALA:HB2	2.02	0.41
2:C:344:THR:O	2:C:381:ALA:HA	2.21	0.40

There are no symmetry-related clashes.

## 5.3 Torsion angles [i](#)

### 5.3.1 Protein backbone [i](#)

In the following table, the Percentiles column shows the percent Ramachandran outliers of the chain as a percentile score with respect to all X-ray entries followed by that with respect to entries of similar resolution.

The Analysed column shows the number of residues for which the backbone conformation was analysed, and the total number of residues.

Mol	Chain	Analysed	Favoured	Allowed	Outliers	Percentiles	
1	A	230/243 (95%)	224 (97%)	6 (3%)	0	100	100
1	B	228/243 (94%)	221 (97%)	7 (3%)	0	100	100
2	C	198/244 (81%)	192 (97%)	5 (2%)	1 (0%)	29	40
All	All	656/730 (90%)	637 (97%)	18 (3%)	1 (0%)	47	60

All (1) Ramachandran outliers are listed below:

Mol	Chain	Res	Type
2	C	275	ILE

### 5.3.2 Protein sidechains [i](#)

In the following table, the Percentiles column shows the percent sidechain outliers of the chain as a percentile score with respect to all X-ray entries followed by that with respect to entries of similar resolution.

The Analysed column shows the number of residues for which the sidechain conformation was analysed, and the total number of residues.

Mol	Chain	Analysed	Rotameric	Outliers	Percentiles	
1	A	206/217 (95%)	193 (94%)	13 (6%)	18	23
1	B	203/217 (94%)	192 (95%)	11 (5%)	22	29
2	C	149/189 (79%)	142 (95%)	7 (5%)	26	35
All	All	558/623 (90%)	527 (94%)	31 (6%)	21	28

All (31) residues with a non-rotameric sidechain are listed below:

Mol	Chain	Res	Type
1	A	65	SER
1	A	73	ARG
1	A	92	LEU
1	A	97	ASN
1	A	99	VAL
1	A	101	GLU
1	A	138	ASP
1	A	149	GLN
1	A	161	GLU
1	A	176	PHE
1	A	193	LEU
1	A	206	ASP
1	A	211	GLU
1	B	65	SER
1	B	92	LEU
1	B	94	ASP
1	B	97	ASN
1	B	99	VAL
1	B	101	GLU
1	B	138	ASP
1	B	161	GLU
1	B	176	PHE
1	B	193	LEU
1	B	206	ASP
2	C	242	VAL
2	C	243	LYS
2	C	358	THR
2	C	385	ASN
2	C	403	THR
2	C	414	GLU
2	C	420	GLN

Sometimes sidechains can be flipped to improve hydrogen bonding and reduce clashes. All (14) such sidechains are listed below:

Mol	Chain	Res	Type
1	A	74	ASN
1	A	209	ASN
1	A	221	GLN
1	B	74	ASN
1	B	78	GLN
1	B	209	ASN
1	B	221	GLN
2	C	310	GLN
2	C	328	ASN
2	C	347	ASN
2	C	378	ASN
2	C	385	ASN
2	C	418	HIS
2	C	420	GLN

### 5.3.3 RNA [i](#)

There are no RNA molecules in this entry.

## 5.4 Non-standard residues in protein, DNA, RNA chains [i](#)

There are no non-standard protein/DNA/RNA residues in this entry.

## 5.5 Carbohydrates [i](#)

There are no monosaccharides in this entry.

## 5.6 Ligand geometry [i](#)

2 ligands are modelled in this entry.

In the following table, the Counts columns list the number of bonds (or angles) for which Mogul statistics could be retrieved, the number of bonds (or angles) that are observed in the model and the number of bonds (or angles) that are defined in the Chemical Component Dictionary. The Link column lists molecule types, if any, to which the group is linked. The Z score for a bond length (or angle) is the number of standard deviations the observed value is removed from the expected value. A bond length (or angle) with  $|Z| > 2$  is considered an outlier worth inspection. RMSZ is the root-mean-square of all Z scores of the bond lengths (or angles).

Mol	Type	Chain	Res	Link	Bond lengths			Bond angles		
					Counts	RMSZ	$\# Z  > 2$	Counts	RMSZ	$\# Z  > 2$
3	CNA	C	501	-	43,48,48	3.07	13 (30%)	51,73,73	2.91	13 (25%)

Mol	Type	Chain	Res	Link	Bond lengths			Bond angles		
					Counts	RMSZ	# Z  > 2	Counts	RMSZ	# Z  > 2
4	MPD	C	502	-	7,7,7	0.64	0	9,10,10	0.74	0

In the following table, the Chirals column lists the number of chiral outliers, the number of chiral centers analysed, the number of these observed in the model and the number defined in the Chemical Component Dictionary. Similar counts are reported in the Torsion and Rings columns. '-' means no outliers of that kind were identified.

Mol	Type	Chain	Res	Link	Chirals	Torsions	Rings
3	CNA	C	501	-	-	2/24/62/62	0/5/5/5
4	MPD	C	502	-	-	5/5/5/5	-

All (13) bond length outliers are listed below:

Mol	Chain	Res	Type	Atoms	Z	Observed(Å)	Ideal(Å)
3	C	501	CNA	C2A-N3A	10.20	1.47	1.32
3	C	501	CNA	C2N-N1N	8.84	1.44	1.35
3	C	501	CNA	C2A-N1A	8.47	1.49	1.33
3	C	501	CNA	C2D-C1D	-5.31	1.46	1.53
3	C	501	CNA	O7N-C7N	-3.91	1.16	1.24
3	C	501	CNA	C3N-C7N	-3.37	1.45	1.50
3	C	501	CNA	O2B-C2B	-3.33	1.34	1.43
3	C	501	CNA	C5D-C4D	3.14	1.57	1.51
3	C	501	CNA	C4'-C4D	-2.94	1.46	1.53
3	C	501	CNA	O3B-C3B	-2.72	1.36	1.43
3	C	501	CNA	C4'-C1D	-2.67	1.44	1.53
3	C	501	CNA	C4N-C3N	2.32	1.42	1.39
3	C	501	CNA	C5A-N7A	-2.18	1.32	1.39

All (13) bond angle outliers are listed below:

Mol	Chain	Res	Type	Atoms	Z	Observed(°)	Ideal(°)
3	C	501	CNA	N3A-C2A-N1A	-12.31	111.96	128.67
3	C	501	CNA	C3N-C7N-N7N	7.06	126.44	117.74
3	C	501	CNA	O7N-C7N-N7N	-6.40	113.37	122.62
3	C	501	CNA	O3D-C3D-C4D	-5.08	99.29	112.56
3	C	501	CNA	O4B-C1B-N9A	4.75	115.04	108.75
3	C	501	CNA	C5N-C4N-C3N	4.70	124.99	120.36
3	C	501	CNA	C4'-C1D-N1N	-4.31	108.09	113.50
3	C	501	CNA	C2N-C3N-C4N	-4.06	113.53	118.26
3	C	501	CNA	C4B-O4B-C1B	3.80	113.40	109.92
3	C	501	CNA	C4'-C1D-C2D	3.16	109.57	104.22
3	C	501	CNA	O2N-PN-O3	2.84	114.95	107.27

*Continued on next page...*

*Continued from previous page...*

Mol	Chain	Res	Type	Atoms	Z	Observed(°)	Ideal(°)
3	C	501	CNA	C2N-C3N-C7N	2.58	126.90	119.46
3	C	501	CNA	O1A-PA-O2A	-2.12	102.59	112.44

There are no chirality outliers.

All (7) torsion outliers are listed below:

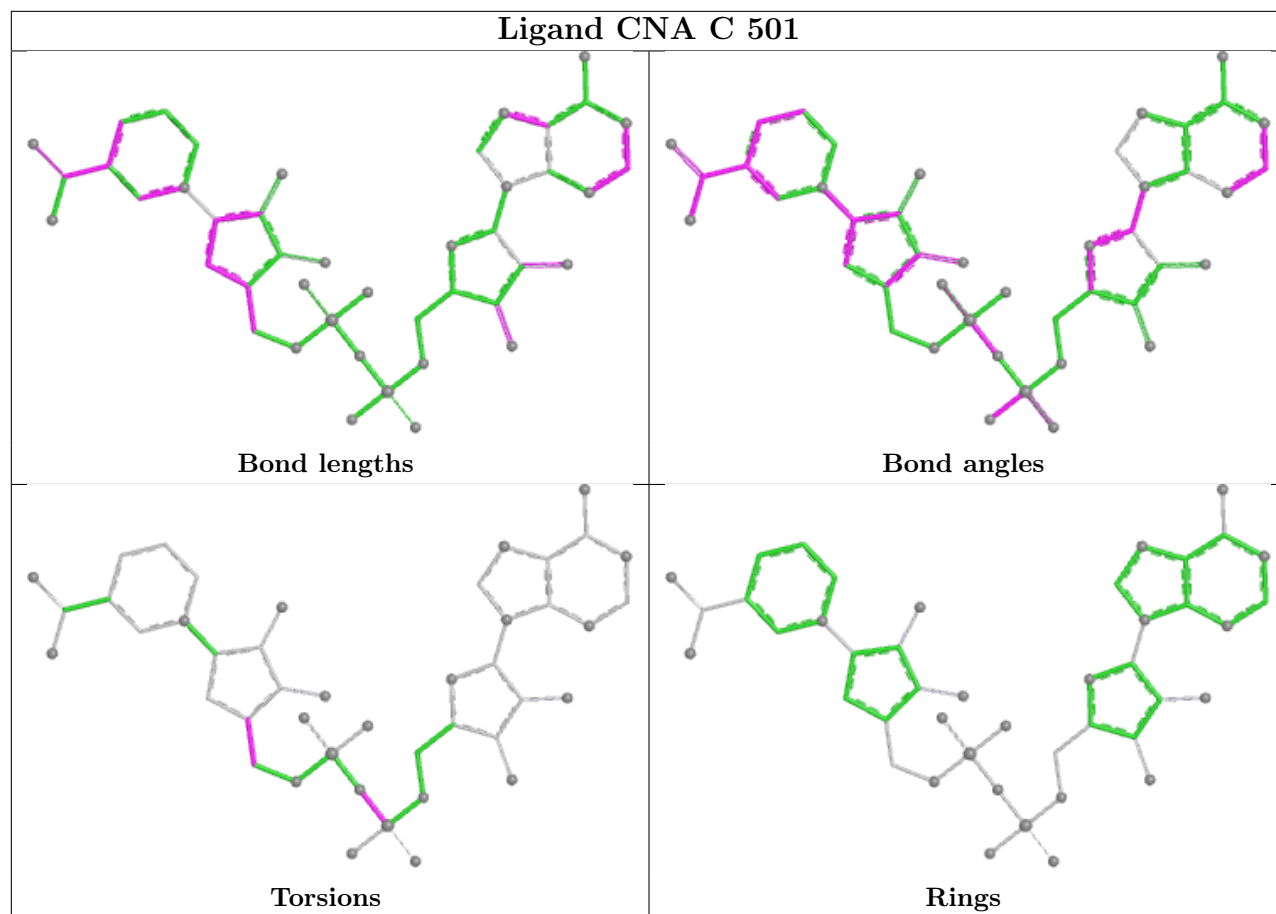
Mol	Chain	Res	Type	Atoms
4	C	502	MPD	C1-C2-C3-C4
4	C	502	MPD	O2-C2-C3-C4
3	C	501	CNA	PN-O3-PA-O5B
4	C	502	MPD	C2-C3-C4-C5
4	C	502	MPD	C2-C3-C4-O4
3	C	501	CNA	C4'-C4D-C5D-O5D
4	C	502	MPD	CM-C2-C3-C4

There are no ring outliers.

1 monomer is involved in 3 short contacts:

Mol	Chain	Res	Type	Clashes	Symm-Clashes
3	C	501	CNA	3	0

The following is a two-dimensional graphical depiction of Mogul quality analysis of bond lengths, bond angles, torsion angles, and ring geometry for all instances of the Ligand of Interest. In addition, ligands with molecular weight > 250 and outliers as shown on the validation Tables will also be included. For torsion angles, if less than 5% of the Mogul distribution of torsion angles is within 10 degrees of the torsion angle in question, then that torsion angle is considered an outlier. Any bond that is central to one or more torsion angles identified as an outlier by Mogul will be highlighted in the graph. For rings, the root-mean-square deviation (RMSD) between the ring in question and similar rings identified by Mogul is calculated over all ring torsion angles. If the average RMSD is greater than 60 degrees and the minimal RMSD between the ring in question and any Mogul-identified rings is also greater than 60 degrees, then that ring is considered an outlier. The outliers are highlighted in purple. The color gray indicates Mogul did not find sufficient equivalents in the CSD to analyse the geometry.



## 5.7 Other polymers [i](#)

There are no such residues in this entry.

## 5.8 Polymer linkage issues [i](#)

There are no chain breaks in this entry.



## 6 Fit of model and data

### 6.1 Protein, DNA and RNA chains

In the following table, the column labelled ‘#RSRZ > 2’ contains the number (and percentage) of RSRZ outliers, followed by percent RSRZ outliers for the chain as percentile scores relative to all X-ray entries and entries of similar resolution. The OWAB column contains the minimum, median, 95<sup>th</sup> percentile and maximum values of the occupancy-weighted average B-factor per residue. The column labelled ‘Q < 0.9’ lists the number of (and percentage) of residues with an average occupancy less than 0.9.

Mol	Chain	Analysed	<RSRZ>	#RSRZ>2	OWAB(Å <sup>2</sup> )	Q<0.9
1	A	232/243 (95%)	0.50	10 (4%) 35 42	59, 82, 139, 170	0
1	B	230/243 (94%)	2.99	97 (42%) 0 0	86, 151, 260, 277	0
2	C	200/244 (81%)	0.23	1 (0%) 91 94	57, 77, 112, 129	0
All	All	662/730 (90%)	1.28	108 (16%) 1 1	57, 92, 253, 277	0

All (108) RSRZ outliers are listed below:

Mol	Chain	Res	Type	RSRZ
1	B	232	SER	18.3
1	B	206	ASP	18.1
1	B	231	THR	15.8
1	B	162	MET	14.9
1	B	211	GLU	14.7
1	B	207	THR	14.0
1	B	172	LEU	12.6
1	B	223	LEU	11.7
1	B	200	GLU	11.6
1	B	227	LEU	11.4
1	B	220	MET	11.2
1	B	203	ALA	11.1
1	B	165	THR	10.5
1	B	209	ASN	10.4
1	B	167	PRO	10.4
1	B	217	THR	10.4
1	B	228	THR	10.3
1	B	161	GLU	10.1
1	B	176	PHE	10.1
1	B	230	TRP	9.9
1	B	222	LEU	9.4
1	B	208	LEU	9.4
1	B	168	ILE	9.0

*Continued on next page...*

*Continued from previous page...*

<b>Mol</b>	<b>Chain</b>	<b>Res</b>	<b>Type</b>	<b>RSRZ</b>
1	B	171	GLY	8.9
1	B	218	LEU	8.8
1	B	210	GLU	8.3
1	B	226	ASN	8.2
1	B	199	ASP	8.1
1	B	202	ILE	8.1
1	B	180	TYR	7.9
1	B	216	SER	7.9
1	B	213	TYR	7.8
1	B	229	LEU	7.6
1	B	181	TYR	7.4
1	B	170	LEU	7.3
1	B	191	CYS	7.0
1	B	159	LYS	7.0
1	B	164	PRO	6.9
1	B	196	THR	6.9
1	B	224	ARG	6.8
1	B	166	HIS	6.6
1	B	215	ASP	6.6
1	B	179	PHE	6.6
1	B	198	PHE	6.3
1	B	178	VAL	6.1
1	B	219	ILE	6.0
1	B	192	SER	6.0
1	B	163	GLN	5.8
1	B	158	SER	5.7
1	B	205	LEU	5.5
1	B	173	ALA	5.4
1	B	214	LYS	5.3
1	B	201	ALA	5.3
1	B	169	ARG	5.1
1	B	204	GLU	5.0
1	B	70	LYS	5.0
1	B	185	ASN	4.9
1	B	183	ILE	4.9
1	B	187	PRO	4.9
1	B	177	SER	4.9
1	B	182	GLU	4.8
1	B	221	GLN	4.7
1	B	160	LYS	4.6
1	B	3	MET	4.5
1	B	225	ASP	4.3

*Continued on next page...*

*Continued from previous page...*

<b>Mol</b>	<b>Chain</b>	<b>Res</b>	<b>Type</b>	<b>RSRZ</b>
2	C	415	LEU	4.3
1	B	107	LEU	3.9
1	B	190	ALA	3.7
1	B	184	LEU	3.5
1	B	186	SER	3.4
1	B	195	LYS	3.3
1	B	212	SER	3.3
1	B	193	LEU	3.3
1	B	27	ALA	3.3
1	B	119	PHE	3.3
1	B	34	GLN	3.1
1	B	79	GLN	3.0
1	B	72	GLU	3.0
1	B	188	GLU	3.0
1	A	70	LYS	3.0
1	B	138	ASP	2.9
1	A	71	THR	2.8
1	B	61	TRP	2.8
1	B	134	VAL	2.7
1	B	189	LYS	2.7
1	A	73	ARG	2.7
1	B	194	ALA	2.7
1	A	75	GLU	2.7
1	B	156	GLU	2.6
1	B	174	LEU	2.6
1	B	71	THR	2.6
1	B	43	ARG	2.6
1	B	14	LEU	2.4
1	A	67	ILE	2.4
1	B	65	SER	2.4
1	B	8	LEU	2.3
1	A	80	MET	2.3
1	B	141	GLN	2.3
1	A	69	GLN	2.3
1	B	67	ILE	2.2
1	B	12	ALA	2.2
1	A	11	LYS	2.2
1	B	197	ALA	2.1
1	B	151	TYR	2.1
1	B	95	ILE	2.1
1	A	76	LYS	2.1
1	B	121	LEU	2.1

*Continued on next page...*

*Continued from previous page...*

Mol	Chain	Res	Type	RSRZ
1	A	100	LEU	2.1

## 6.2 Non-standard residues in protein, DNA, RNA chains [i](#)

There are no non-standard protein/DNA/RNA residues in this entry.

## 6.3 Carbohydrates [i](#)

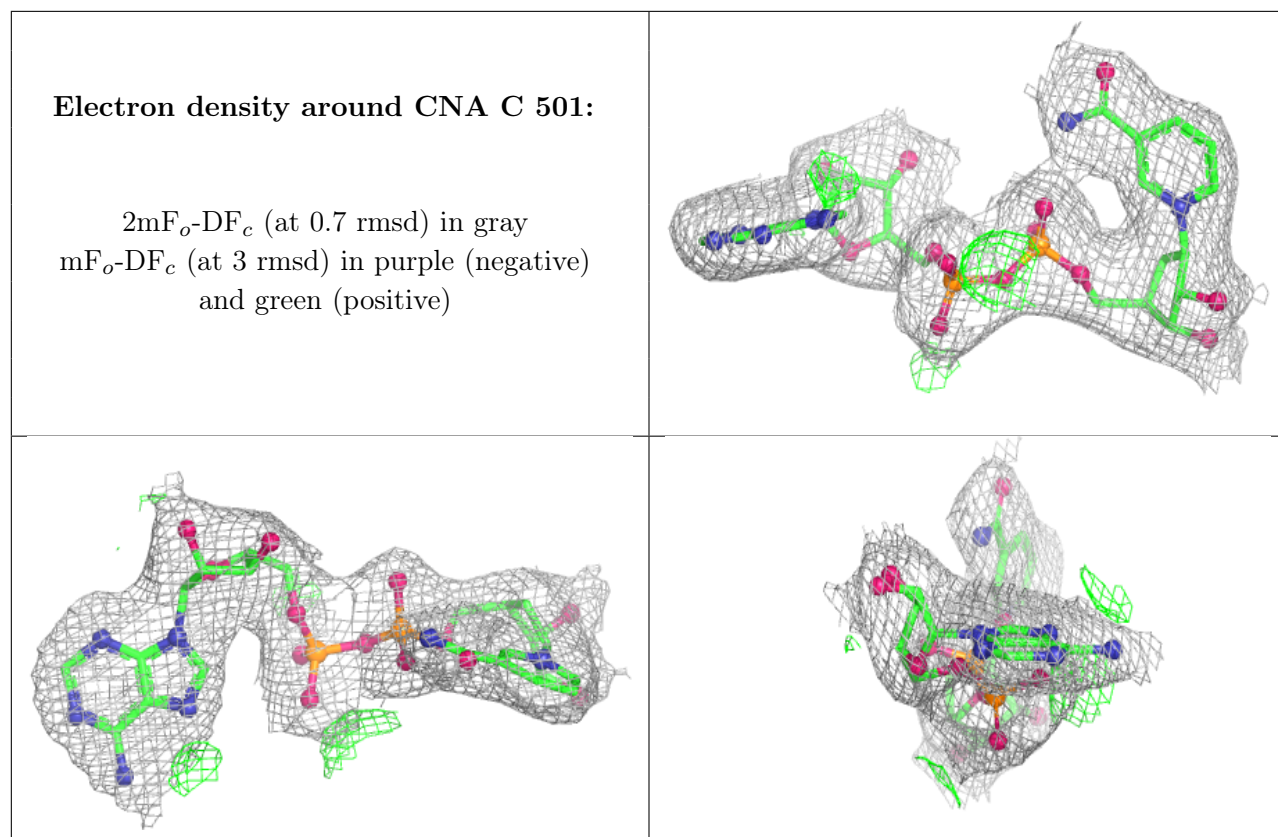
There are no monosaccharides in this entry.

## 6.4 Ligands [i](#)

In the following table, the Atoms column lists the number of modelled atoms in the group and the number defined in the chemical component dictionary. The B-factors column lists the minimum, median, 95<sup>th</sup> percentile and maximum values of B factors of atoms in the group. The column labelled 'Q< 0.9' lists the number of atoms with occupancy less than 0.9.

Mol	Type	Chain	Res	Atoms	RSCC	RSR	B-factors(Å <sup>2</sup> )	Q<0.9
4	MPD	C	502	8/8	0.96	0.26	72,76,82,86	0
3	CNA	C	501	44/44	0.97	0.15	58,68,71,71	0

The following is a graphical depiction of the model fit to experimental electron density of all instances of the Ligand of Interest. In addition, ligands with molecular weight > 250 and outliers as shown on the geometry validation Tables will also be included. Each fit is shown from different orientation to approximate a three-dimensional view.



## 6.5 Other polymers [i](#)

There are no such residues in this entry.