



Full wwPDB X-ray Structure Validation Report ⓘ

Dec 12, 2022 – 12:07 pm GMT

PDB ID : 6G5X
Title : Crystal Structure of KDM4A with compound YP-02-145
Authors : Malecki, P.H.; Carter, D.M.; Gohlke, U.; Specker, E.; Nazare, M.; Weiss, M.S.;
Heinemann, U.
Deposited on : 2018-03-30
Resolution : 1.78 Å(reported)

This is a Full wwPDB X-ray Structure Validation Report for a publicly released PDB entry.

We welcome your comments at validation@mail.wwpdb.org

A user guide is available at

<https://www.wwpdb.org/validation/2017/XrayValidationReportHelp>

with specific help available everywhere you see the ⓘ symbol.

The types of validation reports are described at

<http://www.wwpdb.org/validation/2017/FAQs#types>.

The following versions of software and data (see [references ⓘ](#)) were used in the production of this report:

MolProbity : 4.02b-467
Mogul : 1.8.4, CSD as541be (2020)
Xtrriage (Phenix) : 1.13
EDS : 2.31.3
buster-report : 1.1.7 (2018)
Percentile statistics : 20191225.v01 (using entries in the PDB archive December 25th 2019)
Refmac : 5.8.0267
CCP4 : 7.1.010 (Gargrove)
Ideal geometry (proteins) : Engh & Huber (2001)
Ideal geometry (DNA, RNA) : Parkinson et al. (1996)
Validation Pipeline (wwPDB-VP) : 2.31.3

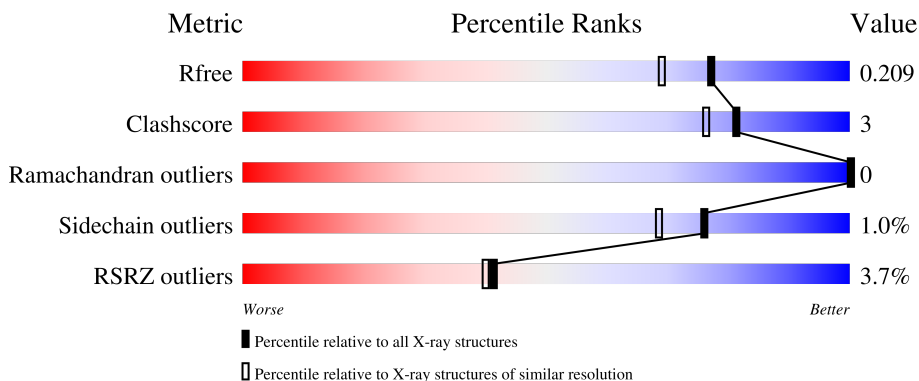
1 Overall quality at a glance

The following experimental techniques were used to determine the structure:

X-RAY DIFFRACTION

The reported resolution of this entry is 1.78 Å.

Percentile scores (ranging between 0-100) for global validation metrics of the entry are shown in the following graphic. The table shows the number of entries on which the scores are based.



Metric	Whole archive (#Entries)	Similar resolution (#Entries, resolution range(Å))
R_{free}	130704	9185 (1.80-1.76)
Clashscore	141614	10184 (1.80-1.76)
Ramachandran outliers	138981	10051 (1.80-1.76)
Sidechain outliers	138945	10050 (1.80-1.76)
RSRZ outliers	127900	9032 (1.80-1.76)

The table below summarises the geometric issues observed across the polymeric chains and their fit to the electron density. The red, orange, yellow and green segments of the lower bar indicate the fraction of residues that contain outliers for ≥ 3 , 2, 1 and 0 types of geometric quality criteria respectively. A grey segment represents the fraction of residues that are not modelled. The numeric value for each fraction is indicated below the corresponding segment, with a dot representing fractions $\leq 5\%$. The upper red bar (where present) indicates the fraction of residues that have poor fit to the electron density. The numeric value is given above the bar.

Mol	Chain	Length	Quality of chain
1	A	359	
1	B	359	

The following table lists non-polymeric compounds, carbohydrate monomers and non-standard residues in protein, DNA, RNA chains that are outliers for geometric or electron-density-fit criteria:

Mol	Type	Chain	Res	Chirality	Geometry	Clashes	Electron density
4	EDO	B	404	-	-	X	-
7	MY7	B	406	X	-	-	-

2 Entry composition [i](#)

There are 8 unique types of molecules in this entry. The entry contains 6389 atoms, of which 0 are hydrogens and 0 are deuteriums.

In the tables below, the ZeroOcc column contains the number of atoms modelled with zero occupancy, the AltConf column contains the number of residues with at least one atom in alternate conformation and the Trace column contains the number of residues modelled with at most 2 atoms.

- Molecule 1 is a protein called Lysine-specific demethylase 4A.

Mol	Chain	Residues	Atoms					ZeroOcc	AltConf	Trace
			Total	C	N	O	S			
1	A	351	2890	1866	484	524	16	0	2	0
1	B	344	2841	1837	478	511	15	0	2	0

- Molecule 2 is ZINC ION (three-letter code: ZN) (formula: Zn).

Mol	Chain	Residues	Atoms		ZeroOcc	AltConf
2	A	1	Total	Zn	0	0
			1	1		
2	B	1	Total	Zn	0	0
			1	1		

- Molecule 3 is NICKEL (II) ION (three-letter code: NI) (formula: Ni).

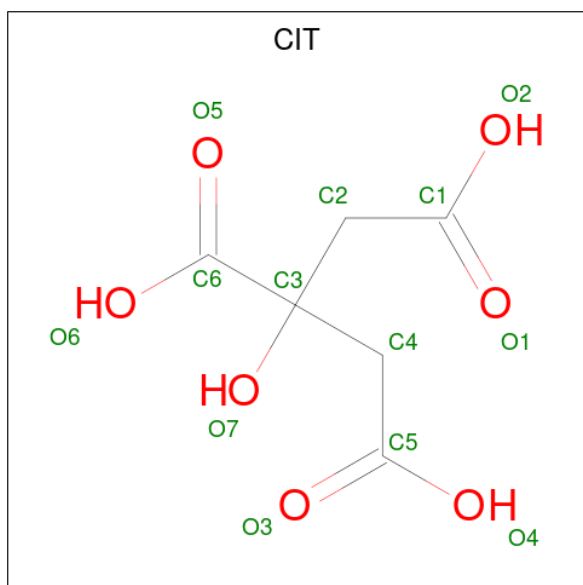
Mol	Chain	Residues	Atoms		ZeroOcc	AltConf
3	A	3	Total	Ni	0	0
			3	3		
3	B	1	Total	Ni	0	0
			1	1		

- Molecule 4 is 1,2-ETHANEDIOL (three-letter code: EDO) (formula: C₂H₆O₂).



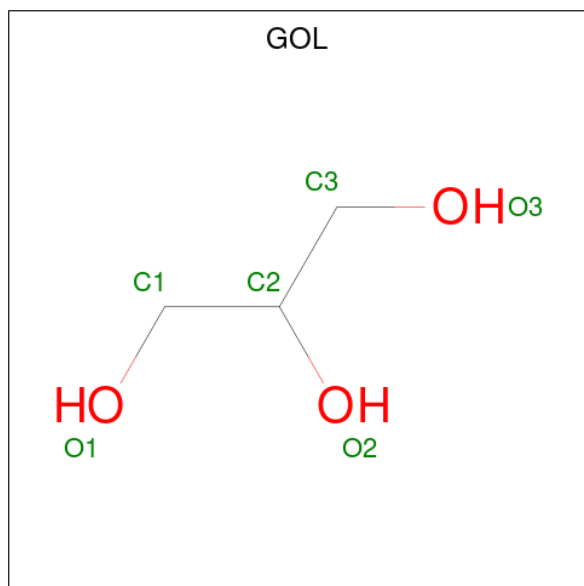
Mol	Chain	Residues	Atoms	ZeroOcc	AltConf
4	A	1	Total C O 4 2 2	0	0
4	A	1	Total C O 4 2 2	0	0
4	B	1	Total C O 4 2 2	0	0
4	B	1	Total C O 4 2 2	0	0

- Molecule 5 is CITRIC ACID (three-letter code: CIT) (formula: C₆H₈O₇).



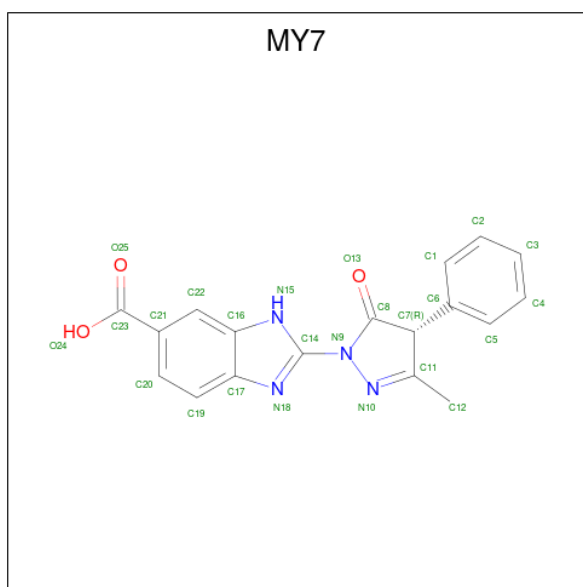
Mol	Chain	Residues	Atoms			ZeroOcc	AltConf
5	A	1	Total	C	O	0	0
			13	6	7		
5	A	1	Total	C	O	0	0
			13	6	7		
5	B	1	Total	C	O	0	0
			13	6	7		

- Molecule 6 is GLYCEROL (three-letter code: GOL) (formula: C₃H₈O₃).



Mol	Chain	Residues	Atoms			ZeroOcc	AltConf
6	A	1	Total	C	O	0	0
			6	3	3		

- Molecule 7 is 2-(3-methyl-5-oxidanylidene-4-phenyl-4 {H}-pyrazol-1-yl)-3 {H}-benzimidazol e-5-carboxylic acid (three-letter code: MY7) (formula: C₁₈H₁₄N₄O₃).



Mol	Chain	Residues	Atoms				ZeroOcc	AltConf
			Total	C	N	O		
7	B	1	25	18	4	3	0	0

- Molecule 8 is water.

Mol	Chain	Residues	Atoms		ZeroOcc	AltConf
			Total	O		
8	A	283	291	291	0	11
8	B	268	275	275	0	10

4 Data and refinement statistics

Property	Value	Source
Space group	P 21 21 2	Depositor
Cell constants a, b, c, α , β , γ	99.14Å 148.62Å 56.91Å 90.00° 90.00° 90.00°	Depositor
Resolution (Å)	46.84 – 1.78 46.84 – 1.78	Depositor EDS
% Data completeness (in resolution range)	99.7 (46.84-1.78) 99.7 (46.84-1.78)	Depositor EDS
R_{merge}	0.05	Depositor
R_{sym}	(Not available)	Depositor
$\langle I/\sigma(I) \rangle$ ¹	1.63 (at 1.78Å)	Xtriage
Refinement program	PHENIX	Depositor
R, R_{free}	0.170 , 0.203 0.177 , 0.209	Depositor DCC
R_{free} test set	2100 reflections (2.59%)	wwPDB-VP
Wilson B-factor (Å ²)	28.7	Xtriage
Anisotropy	0.338	Xtriage
Bulk solvent k_{sol} (e/Å ³), B_{sol} (Å ²)	(Not available) , (Not available)	EDS
L-test for twinning ²	$\langle L \rangle = 0.49$, $\langle L^2 \rangle = 0.33$	Xtriage
Estimated twinning fraction	No twinning to report.	Xtriage
F_o, F_c correlation	0.97	EDS
Total number of atoms	6389	wwPDB-VP
Average B, all atoms (Å ²)	39.0	wwPDB-VP

Xtriage's analysis on translational NCS is as follows: *The largest off-origin peak in the Patterson function is 9.41% of the height of the origin peak. No significant pseudotranslation is detected.*

¹Intensities estimated from amplitudes.

²Theoretical values of $\langle |L| \rangle$, $\langle L^2 \rangle$ for acentric reflections are 0.5, 0.333 respectively for untwinned datasets, and 0.375, 0.2 for perfectly twinned datasets.

5 Model quality [i](#)

5.1 Standard geometry [i](#)

Bond lengths and bond angles in the following residue types are not validated in this section: CIT, NI, GOL, EDO, ZN, MY7

The Z score for a bond length (or angle) is the number of standard deviations the observed value is removed from the expected value. A bond length (or angle) with $|Z| > 5$ is considered an outlier worth inspection. RMSZ is the root-mean-square of all Z scores of the bond lengths (or angles).

Mol	Chain	Bond lengths		Bond angles	
		RMSZ	# Z >5	RMSZ	# Z >5
1	A	0.53	0/2983	0.68	1/4037 (0.0%)
1	B	0.55	0/2930	0.68	0/3966
All	All	0.54	0/5913	0.68	1/8003 (0.0%)

There are no bond length outliers.

All (1) bond angle outliers are listed below:

Mol	Chain	Res	Type	Atoms	Z	Observed(°)	Ideal(°)
1	A	311	ASP	CB-CG-OD1	6.06	123.76	118.30

There are no chirality outliers.

There are no planarity outliers.

5.2 Too-close contacts [i](#)

In the following table, the Non-H and H(model) columns list the number of non-hydrogen atoms and hydrogen atoms in the chain respectively. The H(added) column lists the number of hydrogen atoms added and optimized by MolProbity. The Clashes column lists the number of clashes within the asymmetric unit, whereas Symm-Clashes lists symmetry-related clashes.

Mol	Chain	Non-H	H(model)	H(added)	Clashes	Symm-Clashes
1	A	2890	0	2814	12	0
1	B	2841	0	2768	18	0
2	A	1	0	0	0	0
2	B	1	0	0	0	0
3	A	3	0	0	0	0
3	B	1	0	0	0	0
4	A	8	0	12	1	0
4	B	8	0	12	4	0

Continued on next page...

Continued from previous page...

Mol	Chain	Non-H	H(model)	H(added)	Clashes	Symm-Clashes
5	A	26	0	9	0	0
5	B	13	0	5	0	0
6	A	6	0	7	0	0
7	B	25	0	0	1	0
8	A	291	0	0	0	0
8	B	275	0	0	2	0
All	All	6389	0	5627	30	0

The all-atom clashscore is defined as the number of clashes found per 1000 atoms (including hydrogen atoms). The all-atom clashscore for this structure is 3.

All (30) close contacts within the same asymmetric unit are listed below, sorted by their clash magnitude.

Atom-1	Atom-2	Interatomic distance (Å)	Clash overlap (Å)
1:B:163:GLU:HG3	1:B:319:VAL:HG21	1.57	0.84
1:B:239:ARG:HG2	4:B:404:EDO:H12	1.64	0.78
1:B:189:THR:OG1	4:B:404:EDO:H11	1.85	0.74
1:A:22:GLU:OE1	1:A:25:ARG:NH1	2.26	0.69
1:A:309:ARG:HB3	1:A:312:MET:HE1	1.80	0.63
1:A:309:ARG:CB	1:A:312:MET:HE1	2.29	0.63
1:B:347:THR:HG23	1:B:349:GLU:HG2	1.81	0.62
1:B:150:ILE:HG23	1:B:289:THR:HG22	1.88	0.55
1:B:275:TYR:CZ	4:B:404:EDO:H21	2.44	0.52
1:A:93:THR:OG1	1:A:96:GLU:HG3	2.10	0.51
1:A:98:ARG:HE	4:A:406:EDO:H22	1.77	0.50
1:B:275:TYR:CE1	4:B:404:EDO:H21	2.47	0.49
1:A:222:LEU:HD11	1:A:226:PHE:CE2	2.49	0.47
1:B:163:GLU:CG	1:B:319:VAL:HG21	2.36	0.47
1:B:161:GLU:O	1:B:165:GLY:N	2.49	0.46
1:A:154:ARG:HA	1:A:158:ASP:OD2	2.15	0.46
1:B:163:GLU:HG3	1:B:319:VAL:CG2	2.38	0.46
1:A:327:GLU:OE2	1:A:327:GLU:N	2.44	0.43
1:B:52:GLU:HB3	8:B:667:HOH:O	2.18	0.43
1:B:218:ARG:HG2	1:B:255:ILE:CD1	2.49	0.43
1:A:309:ARG:CA	1:A:312:MET:HE1	2.48	0.43
1:B:214:GLU:HG2	8:B:549:HOH:O	2.19	0.42
1:A:186:ALA:HA	1:A:244:LEU:HD23	2.02	0.42
1:A:309:ARG:HB3	1:A:312:MET:CE	2.48	0.42
1:B:141:TYR:CE2	1:B:149:ASN:HA	2.55	0.42
1:B:298:GLU:OE2	1:B:328:ARG:NH2	2.54	0.41
1:B:159:LEU:O	1:B:163:GLU:HG2	2.21	0.41

Continued on next page...

Continued from previous page...

Atom-1	Atom-2	Interatomic distance (Å)	Clash overlap (Å)
1:B:309:ARG:HG2	1:B:312:MET:SD	2.61	0.41
1:A:222:LEU:HD11	1:A:226:PHE:HE2	1.85	0.41
1:B:259:LYS:HB2	7:B:406:MY7:C4	2.51	0.40

There are no symmetry-related clashes.

5.3 Torsion angles [i](#)

5.3.1 Protein backbone [i](#)

In the following table, the Percentiles column shows the percent Ramachandran outliers of the chain as a percentile score with respect to all X-ray entries followed by that with respect to entries of similar resolution.

The Analysed column shows the number of residues for which the backbone conformation was analysed, and the total number of residues.

Mol	Chain	Analysed	Favoured	Allowed	Outliers	Percentiles	
1	A	351/359 (98%)	346 (99%)	5 (1%)	0	100	100
1	B	344/359 (96%)	341 (99%)	3 (1%)	0	100	100
All	All	695/718 (97%)	687 (99%)	8 (1%)	0	100	100

There are no Ramachandran outliers to report.

5.3.2 Protein sidechains [i](#)

In the following table, the Percentiles column shows the percent sidechain outliers of the chain as a percentile score with respect to all X-ray entries followed by that with respect to entries of similar resolution.

The Analysed column shows the number of residues for which the sidechain conformation was analysed, and the total number of residues.

Mol	Chain	Analysed	Rotameric	Outliers	Percentiles	
1	A	310/315 (98%)	306 (99%)	4 (1%)	69	59
1	B	303/315 (96%)	301 (99%)	2 (1%)	84	79
All	All	613/630 (97%)	607 (99%)	6 (1%)	76	68

All (6) residues with a non-rotameric sidechain are listed below:

Mol	Chain	Res	Type
1	A	58	SER
1	A	74	LEU
1	A	132	TYR
1	A	175	TYR
1	B	113	GLU
1	B	132	TYR

Sometimes sidechains can be flipped to improve hydrogen bonding and reduce clashes. There are no such sidechains identified.

5.3.3 RNA [i](#)

There are no RNA molecules in this entry.

5.4 Non-standard residues in protein, DNA, RNA chains [i](#)

There are no non-standard protein/DNA/RNA residues in this entry.

5.5 Carbohydrates [i](#)

There are no monosaccharides in this entry.

5.6 Ligand geometry [i](#)

Of 15 ligands modelled in this entry, 6 are monoatomic - leaving 9 for Mogul analysis.

In the following table, the Counts columns list the number of bonds (or angles) for which Mogul statistics could be retrieved, the number of bonds (or angles) that are observed in the model and the number of bonds (or angles) that are defined in the Chemical Component Dictionary. The Link column lists molecule types, if any, to which the group is linked. The Z score for a bond length (or angle) is the number of standard deviations the observed value is removed from the expected value. A bond length (or angle) with $|Z| > 2$ is considered an outlier worth inspection. RMSZ is the root-mean-square of all Z scores of the bond lengths (or angles).

Mol	Type	Chain	Res	Link	Bond lengths			Bond angles		
					Counts	RMSZ	$\# Z > 2$	Counts	RMSZ	$\# Z > 2$
5	CIT	A	407	3	12,12,12	1.50	1 (8%)	17,17,17	2.31	7 (41%)
6	GOL	A	409	-	5,5,5	1.60	1 (20%)	5,5,5	0.84	0
7	MY7	B	406	3	26,28,28	3.66	11 (42%)	29,41,41	1.47	3 (10%)
4	EDO	B	403	-	3,3,3	0.59	0	2,2,2	0.12	0
5	CIT	A	408	3	12,12,12	1.13	0	17,17,17	1.72	5 (29%)

Mol	Type	Chain	Res	Link	Bond lengths			Bond angles		
					Counts	RMSZ	# Z > 2	Counts	RMSZ	# Z > 2
4	EDO	A	405	-	3,3,3	0.80	0	2,2,2	0.24	0
5	CIT	B	405	3	12,12,12	1.38	3 (25%)	17,17,17	2.15	6 (35%)
4	EDO	A	406	-	3,3,3	0.64	0	2,2,2	0.22	0
4	EDO	B	404	-	3,3,3	0.46	0	2,2,2	0.40	0

In the following table, the Chirals column lists the number of chiral outliers, the number of chiral centers analysed, the number of these observed in the model and the number defined in the Chemical Component Dictionary. Similar counts are reported in the Torsion and Rings columns. '-' means no outliers of that kind were identified.

Mol	Type	Chain	Res	Link	Chirals	Torsions	Rings
5	CIT	A	407	3	-	3/16/16/16	-
6	GOL	A	409	-	-	2/4/4/4	-
7	MY7	B	406	3	1/1/5/5	3/8/28/28	0/4/4/4
4	EDO	B	403	-	-	0/1/1/1	-
5	CIT	A	408	3	-	2/16/16/16	-
4	EDO	A	405	-	-	0/1/1/1	-
5	CIT	B	405	3	-	2/16/16/16	-
4	EDO	A	406	-	-	1/1/1/1	-
4	EDO	B	404	-	-	0/1/1/1	-

All (16) bond length outliers are listed below:

Mol	Chain	Res	Type	Atoms	Z	Observed(Å)	Ideal(Å)
7	B	406	MY7	C6-C7	-12.22	1.38	1.53
7	B	406	MY7	O13-C8	7.66	1.36	1.22
7	B	406	MY7	C22-C16	-4.95	1.34	1.41
7	B	406	MY7	C19-C17	-4.87	1.33	1.41
7	B	406	MY7	C14-N9	-4.24	1.35	1.40
7	B	406	MY7	C21-C23	-4.01	1.40	1.49
7	B	406	MY7	C7-C11	-3.78	1.34	1.43
5	A	407	CIT	C3-C6	-3.75	1.49	1.53
7	B	406	MY7	C7-C8	-3.48	1.36	1.52
6	A	409	GOL	O2-C2	-3.17	1.33	1.43
7	B	406	MY7	C12-C11	2.49	1.53	1.50
7	B	406	MY7	C17-C16	-2.19	1.35	1.42
7	B	406	MY7	N9-N10	-2.17	1.34	1.39
5	B	405	CIT	O2-C1	-2.09	1.23	1.30
5	B	405	CIT	O4-C5	-2.08	1.23	1.30
5	B	405	CIT	C4-C3	-2.08	1.51	1.53

All (21) bond angle outliers are listed below:

Mol	Chain	Res	Type	Atoms	Z	Observed(°)	Ideal(°)
5	A	407	CIT	C4-C3-C6	-5.10	99.16	110.11
5	B	405	CIT	C4-C3-C6	-4.65	100.10	110.11
5	A	407	CIT	O6-C6-C3	4.37	120.64	113.05
5	B	405	CIT	O6-C6-C3	3.96	119.93	113.05
7	B	406	MY7	C8-N9-N10	-3.67	105.81	112.17
7	B	406	MY7	C14-N9-N10	3.63	122.11	118.47
5	A	407	CIT	O5-C6-C3	-3.22	117.70	122.25
5	A	408	CIT	O6-C6-C3	3.19	118.59	113.05
5	B	405	CIT	O5-C6-C3	-3.04	117.94	122.25
5	A	407	CIT	C3-C4-C5	-3.03	106.47	113.81
5	B	405	CIT	C2-C3-C6	3.03	116.61	110.11
5	B	405	CIT	O2-C1-O1	-2.93	115.98	123.30
5	A	408	CIT	O2-C1-O1	-2.87	116.13	123.30
5	A	408	CIT	O2-C1-C2	2.82	123.40	114.35
5	A	408	CIT	O5-C6-C3	-2.61	118.55	122.25
7	B	406	MY7	O24-C23-C21	2.60	121.59	114.85
5	A	407	CIT	C4-C3-C2	2.57	115.87	109.16
5	A	407	CIT	O2-C1-O1	-2.43	117.25	123.30
5	B	405	CIT	O2-C1-C2	2.37	121.97	114.35
5	A	407	CIT	C2-C3-C6	2.25	114.93	110.11
5	A	408	CIT	C4-C3-C6	-2.07	105.65	110.11

All (1) chirality outliers are listed below:

Mol	Chain	Res	Type	Atom
7	B	406	MY7	C7

All (13) torsion outliers are listed below:

Mol	Chain	Res	Type	Atoms
7	B	406	MY7	C1-C6-C7-C11
6	A	409	GOL	O1-C1-C2-O2
6	A	409	GOL	O1-C1-C2-C3
5	A	408	CIT	O1-C1-C2-C3
5	A	408	CIT	O2-C1-C2-C3
5	A	407	CIT	C4-C3-C6-O6
5	B	405	CIT	C4-C3-C6-O6
5	A	407	CIT	C1-C2-C3-O7
5	B	405	CIT	C1-C2-C3-O7
7	B	406	MY7	C5-C6-C7-C11
7	B	406	MY7	C1-C6-C7-C8

Continued on next page...

Continued from previous page...

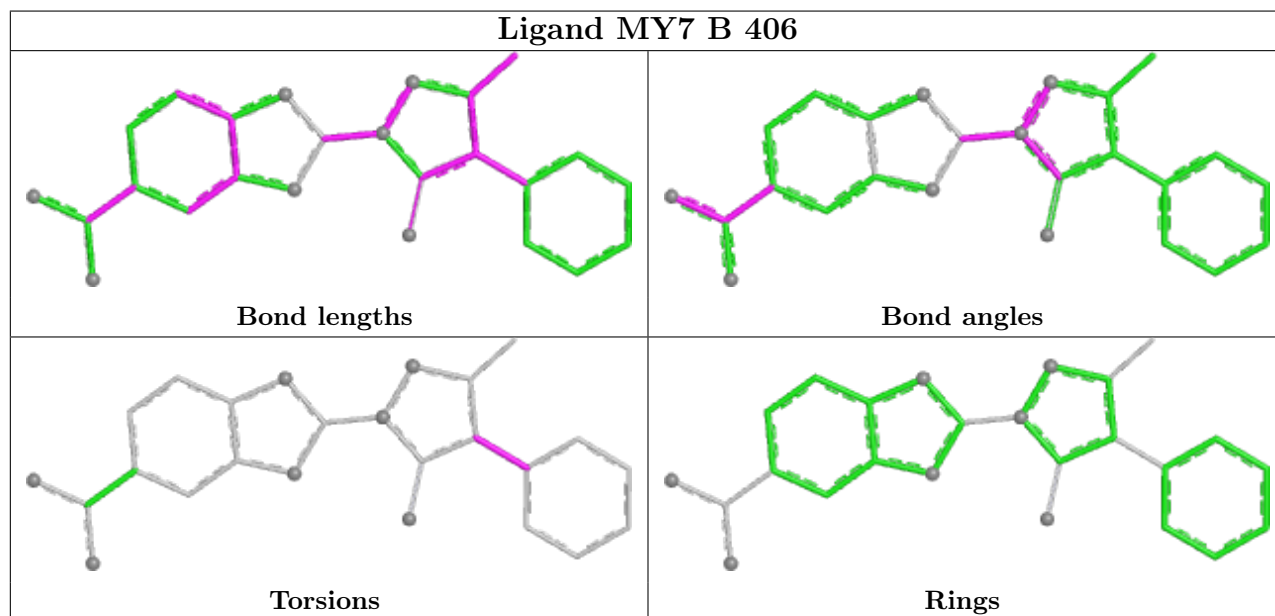
Mol	Chain	Res	Type	Atoms
5	A	407	CIT	C4-C3-C6-O5
4	A	406	EDO	O1-C1-C2-O2

There are no ring outliers.

3 monomers are involved in 6 short contacts:

Mol	Chain	Res	Type	Clashes	Symm-Clashes
7	B	406	MY7	1	0
4	A	406	EDO	1	0
4	B	404	EDO	4	0

The following is a two-dimensional graphical depiction of Mogul quality analysis of bond lengths, bond angles, torsion angles, and ring geometry for all instances of the Ligand of Interest. In addition, ligands with molecular weight > 250 and outliers as shown on the validation Tables will also be included. For torsion angles, if less than 5% of the Mogul distribution of torsion angles is within 10 degrees of the torsion angle in question, then that torsion angle is considered an outlier. Any bond that is central to one or more torsion angles identified as an outlier by Mogul will be highlighted in the graph. For rings, the root-mean-square deviation (RMSD) between the ring in question and similar rings identified by Mogul is calculated over all ring torsion angles. If the average RMSD is greater than 60 degrees and the minimal RMSD between the ring in question and any Mogul-identified rings is also greater than 60 degrees, then that ring is considered an outlier. The outliers are highlighted in purple. The color gray indicates Mogul did not find sufficient equivalents in the CSD to analyse the geometry.



5.7 Other polymers [i](#)

There are no such residues in this entry.

5.8 Polymer linkage issues [i](#)

There are no chain breaks in this entry.

6 Fit of model and data

6.1 Protein, DNA and RNA chains

In the following table, the column labelled ‘#RSRZ > 2’ contains the number (and percentage) of RSRZ outliers, followed by percent RSRZ outliers for the chain as percentile scores relative to all X-ray entries and entries of similar resolution. The OWAB column contains the minimum, median, 95th percentile and maximum values of the occupancy-weighted average B-factor per residue. The column labelled ‘Q < 0.9’ lists the number of (and percentage) of residues with an average occupancy less than 0.9.

Mol	Chain	Analysed	<RSRZ>	#RSRZ>2	OWAB(Å ²)	Q<0.9
1	A	351/359 (97%)	-0.00	12 (3%) 45 44	21, 34, 67, 91	0
1	B	344/359 (95%)	-0.05	14 (4%) 37 35	20, 35, 70, 115	0
All	All	695/718 (96%)	-0.03	26 (3%) 41 40	20, 34, 69, 115	0

All (26) RSRZ outliers are listed below:

Mol	Chain	Res	Type	RSRZ
1	B	354	LEU	5.5
1	A	353	PHE	4.2
1	A	143	LYS	3.9
1	B	309	ARG	3.8
1	B	166	ILE	3.8
1	A	7	THR	3.4
1	B	154	ARG	3.4
1	B	310	LYS	3.3
1	A	350	ALA	3.2
1	B	311	ASP	3.1
1	B	163	GLU	3.1
1	A	309	ARG	3.0
1	A	322	ARG	2.7
1	B	11	SER	2.6
1	A	351	ALA	2.5
1	A	113	GLU	2.5
1	A	144	HIS	2.5
1	B	52	GLU	2.4
1	B	312	MET	2.4
1	B	165	GLY	2.4
1	B	353	PHE	2.4
1	B	351	ALA	2.4
1	A	145	VAL	2.2
1	A	3	SER	2.2

Continued on next page...

Continued from previous page...

Mol	Chain	Res	Type	RSRZ
1	A	110	ARG	2.1
1	B	170	GLY	2.1

6.2 Non-standard residues in protein, DNA, RNA chains [i](#)

There are no non-standard protein/DNA/RNA residues in this entry.

6.3 Carbohydrates [i](#)

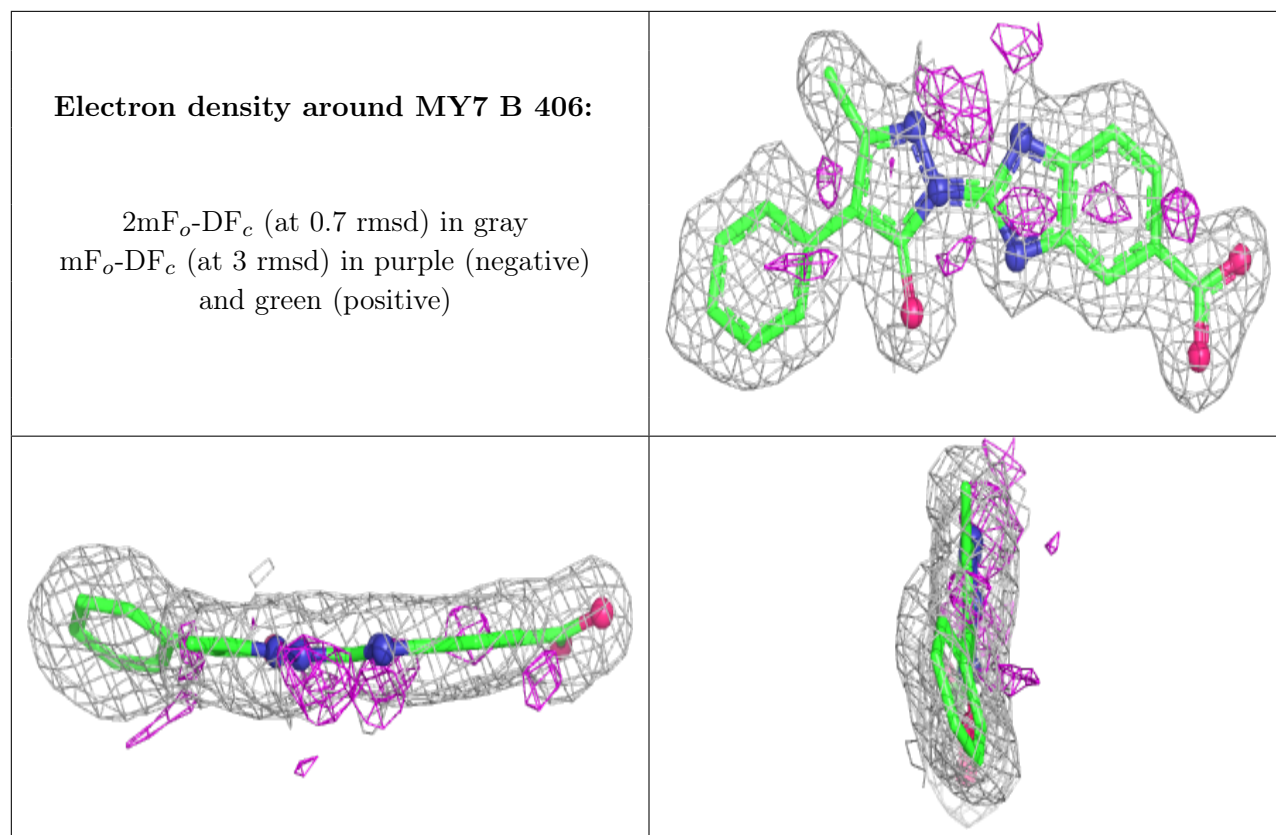
There are no monosaccharides in this entry.

6.4 Ligands [i](#)

In the following table, the Atoms column lists the number of modelled atoms in the group and the number defined in the chemical component dictionary. The B-factors column lists the minimum, median, 95th percentile and maximum values of B factors of atoms in the group. The column labelled 'Q < 0.9' lists the number of atoms with occupancy less than 0.9.

Mol	Type	Chain	Res	Atoms	RSCC	RSR	B-factors(Å ²)	Q < 0.9
4	EDO	A	406	4/4	0.68	0.19	64,64,69,69	0
6	GOL	A	409	6/6	0.85	0.12	33,53,55,59	0
4	EDO	A	405	4/4	0.89	0.14	32,44,52,55	0
4	EDO	B	404	4/4	0.91	0.22	36,42,44,46	0
7	MY7	B	406	25/25	0.92	0.10	25,31,41,46	0
4	EDO	B	403	4/4	0.94	0.10	30,47,62,71	0
3	NI	A	403	1/1	0.94	0.09	50,50,50,50	1
5	CIT	A	408	13/13	0.96	0.09	28,34,48,50	0
5	CIT	B	405	13/13	0.96	0.09	22,32,45,48	0
5	CIT	A	407	13/13	0.97	0.08	24,32,43,53	0
3	NI	A	402	1/1	0.98	0.07	31,31,31,31	0
2	ZN	B	401	1/1	0.99	0.04	36,36,36,36	0
2	ZN	A	401	1/1	0.99	0.06	30,30,30,30	0
3	NI	B	402	1/1	1.00	0.07	26,26,26,26	0
3	NI	A	404	1/1	1.00	0.09	25,25,25,25	0

The following is a graphical depiction of the model fit to experimental electron density of all instances of the Ligand of Interest. In addition, ligands with molecular weight > 250 and outliers as shown on the geometry validation Tables will also be included. Each fit is shown from different orientation to approximate a three-dimensional view.



6.5 Other polymers [i](#)

There are no such residues in this entry.