



Full wwPDB X-ray Structure Validation Report ⓘ

Jun 22, 2024 – 09:31 PM EDT

PDB ID : 6FOZ
Title : The crystal structure of *P.fluorescens* Kynurenine 3-monooxygenase (KMO) in complex with competitive inhibitor No. 13
Authors : Levy, C.W.; Leys, D.
Deposited on : 2018-02-08
Resolution : 2.15 Å (reported)

This is a Full wwPDB X-ray Structure Validation Report for a publicly released PDB entry.

We welcome your comments at validation@mail.wwpdb.org

A user guide is available at

<https://www.wwpdb.org/validation/2017/XrayValidationReportHelp>

with specific help available everywhere you see the ⓘ symbol.

The types of validation reports are described at

<http://www.wwpdb.org/validation/2017/FAQs#types>.

The following versions of software and data (see [references ⓘ](#)) were used in the production of this report:

MolProbity : 4.02b-467
Mogul : 2022.3.0, CSD as543be (2022)
Xtriage (Phenix) : 1.20.1
EDS : 2.37.1
buster-report : 1.1.7 (2018)
Percentile statistics : 20191225.v01 (using entries in the PDB archive December 25th 2019)
Refmac : 5.8.0158
CCP4 : 7.0.044 (Gargrove)
Ideal geometry (proteins) : Engh & Huber (2001)
Ideal geometry (DNA, RNA) : Parkinson et al. (1996)
Validation Pipeline (wwPDB-VP) : 2.37.1

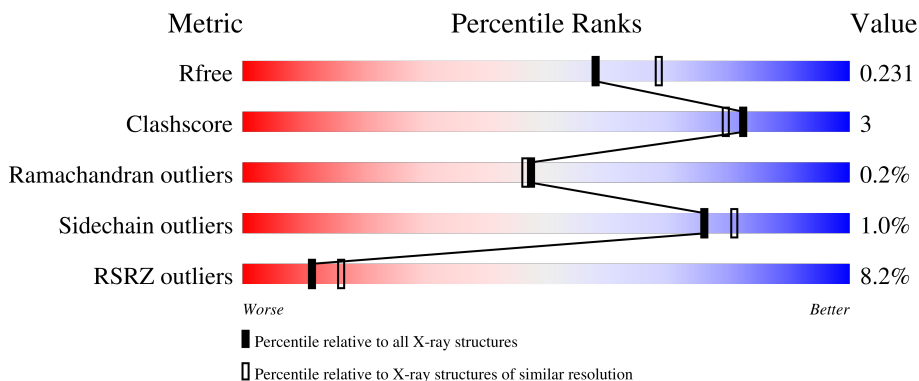
1 Overall quality at a glance

The following experimental techniques were used to determine the structure:

X-RAY DIFFRACTION

The reported resolution of this entry is 2.15 Å.

Percentile scores (ranging between 0-100) for global validation metrics of the entry are shown in the following graphic. The table shows the number of entries on which the scores are based.



Metric	Whole archive (#Entries)	Similar resolution (#Entries, resolution range(Å))
R_{free}	130704	1479 (2.16-2.16)
Clashscore	141614	1585 (2.16-2.16)
Ramachandran outliers	138981	1560 (2.16-2.16)
Sidechain outliers	138945	1559 (2.16-2.16)
RSRZ outliers	127900	1456 (2.16-2.16)

The table below summarises the geometric issues observed across the polymeric chains and their fit to the electron density. The red, orange, yellow and green segments of the lower bar indicate the fraction of residues that contain outliers for ≥ 3 , 2, 1 and 0 types of geometric quality criteria respectively. A grey segment represents the fraction of residues that are not modelled. The numeric value for each fraction is indicated below the corresponding segment, with a dot representing fractions $\leq 5\%$. The upper red bar (where present) indicates the fraction of residues that have poor fit to the electron density. The numeric value is given above the bar.

Mol	Chain	Length	Quality of chain
1	A	460	
1	B	460	

2 Entry composition i

There are 4 unique types of molecules in this entry. The entry contains 13974 atoms, of which 6770 are hydrogens and 0 are deuteriums.

In the tables below, the ZeroOcc column contains the number of atoms modelled with zero occupancy, the AltConf column contains the number of residues with at least one atom in alternate conformation and the Trace column contains the number of residues modelled with at most 2 atoms.

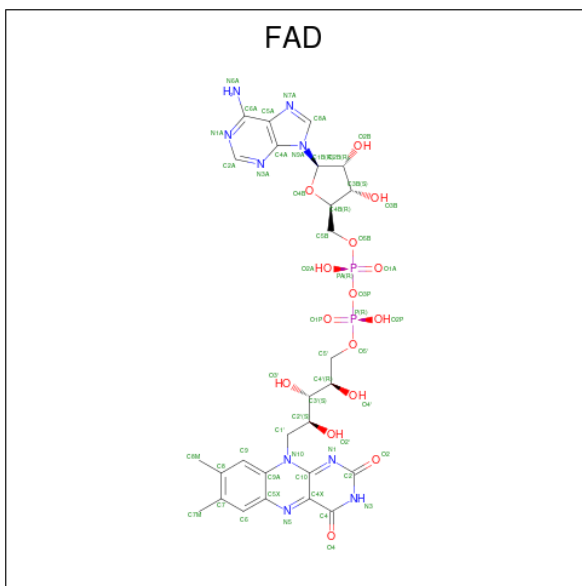
- Molecule 1 is a protein called Kynurenine 3-monooxygenase.

Mol	Chain	Residues	Atoms					ZeroOcc	AltConf	Trace	
			Total	C	H	N	O				S
1	A	441	6821	2161	3369	640	634	17	0	8	0
1	B	436	6755	2143	3327	632	635	18	0	12	0

There are 4 discrepancies between the modelled and reference sequences:

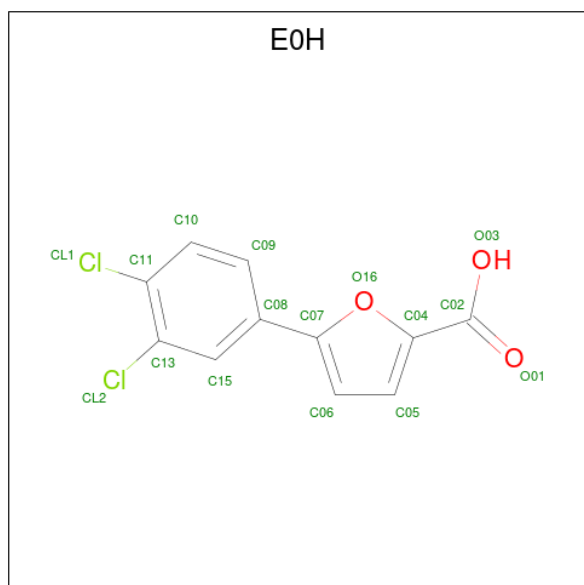
Chain	Residue	Modelled	Actual	Comment	Reference
A	251	SER	CYS	conflict	UNP Q84HF5
A	460	SER	CYS	conflict	UNP Q84HF5
B	251	SER	CYS	conflict	UNP Q84HF5
B	460	SER	CYS	conflict	UNP Q84HF5

- Molecule 2 is FLAVIN-ADENINE DINUCLEOTIDE (three-letter code: FAD) (formula: $C_{27}H_{33}N_9O_{15}P_2$).



Mol	Chain	Residues	Atoms					ZeroOcc	AltConf	
2	A	1	Total	C	H	N	O	P	0	0
			84	27	31	9	15	2		
2	B	1	Total	C	H	N	O	P	0	0
			84	27	31	9	15	2		

- Molecule 3 is 5-(3,4-dichlorophenyl)furan-2-carboxylic acid (three-letter code: EOH) (formula: C₁₁H₆Cl₂O₃) (labeled as "Ligand of Interest" by depositor).



Mol	Chain	Residues	Atoms					ZeroOcc	AltConf
3	A	1	Total	C	Cl	H	O	0	0
			22	11	2	6	3		
3	B	1	Total	C	Cl	H	O	0	0
			22	11	2	6	3		

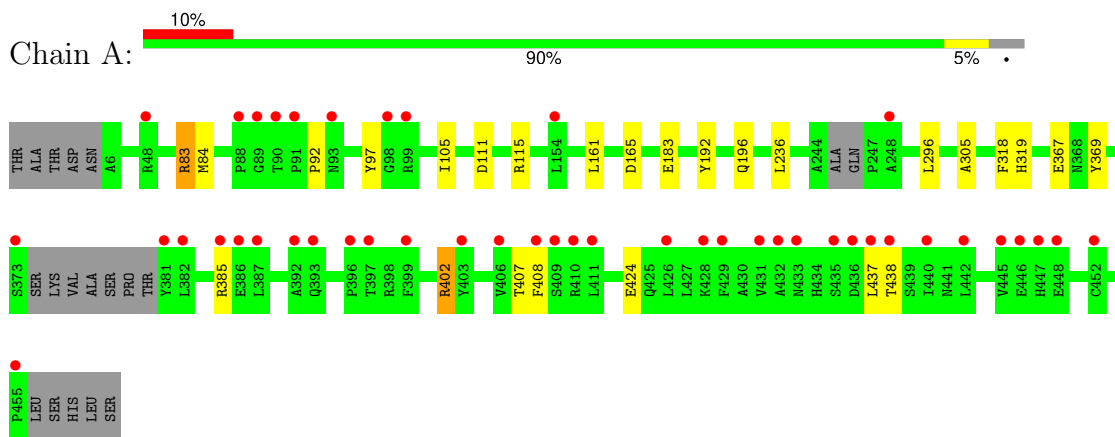
- Molecule 4 is water.

Mol	Chain	Residues	Atoms		ZeroOcc	AltConf
4	A	104	Total	O	0	0
			104	104		
4	B	82	Total	O	0	0
			82	82		

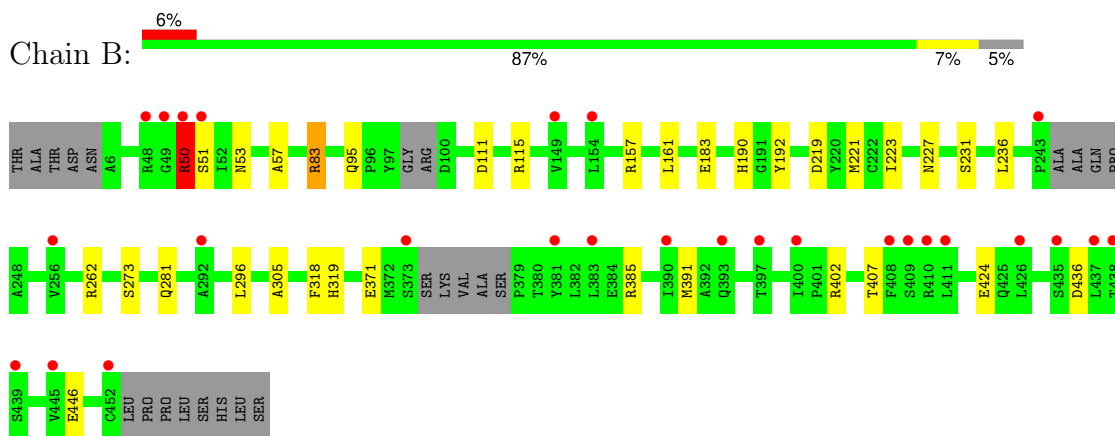
3 Residue-property plots [i](#)

These plots are drawn for all protein, RNA, DNA and oligosaccharide chains in the entry. The first graphic for a chain summarises the proportions of the various outlier classes displayed in the second graphic. The second graphic shows the sequence view annotated by issues in geometry and electron density. Residues are color-coded according to the number of geometric quality criteria for which they contain at least one outlier: green = 0, yellow = 1, orange = 2 and red = 3 or more. A red dot above a residue indicates a poor fit to the electron density ($RSRZ > 2$). Stretches of 2 or more consecutive residues without any outlier are shown as a green connector. Residues present in the sample, but not in the model, are shown in grey.

- Molecule 1: Kynurenine 3-monooxygenase



- Molecule 1: Kynurenine 3-monooxygenase



4 Data and refinement statistics i

Property	Value	Source
Space group	P 1 21 1	Depositor
Cell constants a, b, c, α , β , γ	69.54Å 52.19Å 136.21Å 90.00° 103.53° 90.00°	Depositor
Resolution (Å)	66.89 – 2.15 66.89 – 2.07	Depositor EDS
% Data completeness (in resolution range)	99.2 (66.89-2.15) 91.4 (66.89-2.07)	Depositor EDS
R_{merge}	0.06	Depositor
R_{sym}	(Not available)	Depositor
$\langle I/\sigma(I) \rangle$ ¹	1.75 (at 2.07Å)	Xtrriage
Refinement program	PHENIX 1.13_2998	Depositor
R, R_{free}	0.199 , 0.229 0.202 , 0.231	Depositor DCC
R_{free} test set	2467 reflections (4.25%)	wwPDB-VP
Wilson B-factor (Å ²)	33.4	Xtrriage
Anisotropy	0.167	Xtrriage
Bulk solvent k_{sol} (e/Å ³), B_{sol} (Å ²)	0.42 , 52.9	EDS
L-test for twinning ²	$\langle L \rangle = 0.49$, $\langle L^2 \rangle = 0.32$	Xtrriage
Estimated twinning fraction	0.000 for h,-k,-h-l	Xtrriage
F_o, F_c correlation	0.95	EDS
Total number of atoms	13974	wwPDB-VP
Average B, all atoms (Å ²)	57.0	wwPDB-VP

Xtrriage's analysis on translational NCS is as follows: *The analyses of the Patterson function reveals a significant off-origin peak that is 36.24 % of the origin peak, indicating pseudo-translational symmetry. The chance of finding a peak of this or larger height randomly in a structure without pseudo-translational symmetry is equal to 5.1555e-04. The detected translational NCS is most likely also responsible for the elevated intensity ratio.*

¹Intensities estimated from amplitudes.

²Theoretical values of $\langle |L| \rangle$, $\langle L^2 \rangle$ for acentric reflections are 0.5, 0.333 respectively for untwinned datasets, and 0.375, 0.2 for perfectly twinned datasets.

5 Model quality

5.1 Standard geometry

Bond lengths and bond angles in the following residue types are not validated in this section: FAD, E0H

The Z score for a bond length (or angle) is the number of standard deviations the observed value is removed from the expected value. A bond length (or angle) with $|Z| > 5$ is considered an outlier worth inspection. RMSZ is the root-mean-square of all Z scores of the bond lengths (or angles).

Mol	Chain	Bond lengths		Bond angles	
		RMSZ	# Z >5	RMSZ	# Z >5
1	A	0.26	0/3525	0.46	0/4784
1	B	0.26	0/3498	0.46	0/4746
All	All	0.26	0/7023	0.46	0/9530

There are no bond length outliers.

There are no bond angle outliers.

There are no chirality outliers.

There are no planarity outliers.

5.2 Too-close contacts

In the following table, the Non-H and H(model) columns list the number of non-hydrogen atoms and hydrogen atoms in the chain respectively. The H(added) column lists the number of hydrogen atoms added and optimized by MolProbity. The Clashes column lists the number of clashes within the asymmetric unit, whereas Symm-Clashes lists symmetry-related clashes.

Mol	Chain	Non-H	H(model)	H(added)	Clashes	Symm-Clashes
1	A	3452	3369	3358	15	0
1	B	3428	3327	3299	20	0
2	A	53	31	31	0	0
2	B	53	31	31	0	0
3	A	16	6	0	0	0
3	B	16	6	0	1	0
4	A	104	0	0	0	0
4	B	82	0	0	1	0
All	All	7204	6770	6719	35	0

The all-atom clashscore is defined as the number of clashes found per 1000 atoms (including hydrogen atoms). The all-atom clashscore for this structure is 3.

All (35) close contacts within the same asymmetric unit are listed below, sorted by their clash magnitude.

Atom-1	Atom-2	Interatomic distance (Å)	Clash overlap (Å)
1:B:227[B]:ASN:ND2	1:B:231:SER:OG	2.10	0.81
1:B:57:ALA:HB1	1:B:407:THR:HG23	1.63	0.80
1:B:53:ASN:ND2	1:B:227[B]:ASN:OD1	2.19	0.75
1:B:385:ARG:NH2	1:B:424:GLU:OE1	2.20	0.73
1:B:281:GLN:NE2	4:B:601:HOH:O	2.21	0.73
1:A:385:ARG:NH2	1:A:424:GLU:OE2	2.27	0.67
1:A:367:GLU:OE1	1:A:402:ARG:NH1	2.28	0.66
1:A:111:ASP:OD2	1:A:115[B]:ARG:NH1	2.36	0.58
1:A:97:TYR:HB3	1:A:408:PHE:CZ	2.39	0.57
1:B:221:MET:HE2	1:B:318:PHE:HE1	1.70	0.56
1:A:111:ASP:O	1:A:115[B]:ARG:HG3	2.06	0.55
1:B:318:PHE:O	1:B:319:HIS:HB2	2.07	0.53
1:B:262:ARG:NH2	1:B:273:SER:O	2.45	0.49
1:B:190:HIS:NE2	1:B:219:ASP:O	2.31	0.47
1:A:192:TYR:HA	1:A:236:LEU:O	2.15	0.47
1:B:223:ILE:HD12	3:B:502:E0H:CL2	2.53	0.46
1:B:50:ARG:HD3	1:B:51:SER:N	2.29	0.46
1:B:371:GLU:OE2	1:B:402:ARG:NH2	2.41	0.46
1:A:161:LEU:O	1:A:305:ALA:HA	2.16	0.45
1:B:111[A]:ASP:OD2	1:B:115:ARG:NH2	2.50	0.45
1:A:183:GLU:HG2	1:A:296:LEU:HD22	1.99	0.45
1:A:83:ARG:H	1:A:83:ARG:HG2	1.74	0.43
1:A:437:LEU:HD12	1:A:438:THR:N	2.34	0.43
1:A:165:ASP:OD1	1:A:165:ASP:N	2.47	0.43
1:A:105:ILE:CG2	1:A:407:THR:CG2	2.97	0.42
1:B:192:TYR:HA	1:B:236:LEU:O	2.18	0.42
1:B:50:ARG:O	1:B:51:SER:HB3	2.19	0.42
1:B:183:GLU:HG2	1:B:296:LEU:HD22	2.02	0.42
1:A:84:MET:HG3	1:A:92:PRO:HB3	2.01	0.42
1:A:105:ILE:HG21	1:A:407:THR:CG2	2.50	0.42
1:B:83:ARG:HG2	1:B:95:GLN:HB2	2.01	0.42
1:B:161:LEU:O	1:B:305:ALA:HA	2.19	0.41
1:B:391:MET:CE	1:B:446:GLU:HA	2.51	0.41
1:A:318:PHE:CE2	1:A:369:TYR:HD1	2.39	0.40
1:B:57:ALA:CB	1:B:407:THR:HG23	2.43	0.40

There are no symmetry-related clashes.

5.3 Torsion angles [i](#)

5.3.1 Protein backbone [i](#)

In the following table, the Percentiles column shows the percent Ramachandran outliers of the chain as a percentile score with respect to all X-ray entries followed by that with respect to entries of similar resolution.

The Analysed column shows the number of residues for which the backbone conformation was analysed, and the total number of residues.

Mol	Chain	Analysed	Favoured	Allowed	Outliers	Percentiles	
1	A	439/460 (95%)	432 (98%)	7 (2%)	0	100	100
1	B	434/460 (94%)	423 (98%)	9 (2%)	2 (0%)	29	22
All	All	873/920 (95%)	855 (98%)	16 (2%)	2 (0%)	47	46

All (2) Ramachandran outliers are listed below:

Mol	Chain	Res	Type
1	B	436	ASP
1	B	50	ARG

5.3.2 Protein sidechains [i](#)

In the following table, the Percentiles column shows the percent sidechain outliers of the chain as a percentile score with respect to all X-ray entries followed by that with respect to entries of similar resolution.

The Analysed column shows the number of residues for which the sidechain conformation was analysed, and the total number of residues.

Mol	Chain	Analysed	Rotameric	Outliers	Percentiles	
1	A	358/371 (96%)	353 (99%)	5 (1%)	67	72
1	B	357/371 (96%)	354 (99%)	3 (1%)	81	86
All	All	715/742 (96%)	707 (99%)	8 (1%)	76	78

All (8) residues with a non-rotameric sidechain are listed below:

Mol	Chain	Res	Type
1	A	83	ARG
1	A	196[A]	GLN
1	A	196[B]	GLN
1	A	319	HIS

Continued on next page...

Continued from previous page...

Mol	Chain	Res	Type
1	A	402	ARG
1	B	50	ARG
1	B	83	ARG
1	B	157	ARG

Sometimes sidechains can be flipped to improve hydrogen bonding and reduce clashes. All (1) such sidechains are listed below:

Mol	Chain	Res	Type
1	B	304	GLN

5.3.3 RNA [i](#)

There are no RNA molecules in this entry.

5.4 Non-standard residues in protein, DNA, RNA chains [i](#)

There are no non-standard protein/DNA/RNA residues in this entry.

5.5 Carbohydrates [i](#)

There are no monosaccharides in this entry.

5.6 Ligand geometry [i](#)

4 ligands are modelled in this entry.

In the following table, the Counts columns list the number of bonds (or angles) for which Mogul statistics could be retrieved, the number of bonds (or angles) that are observed in the model and the number of bonds (or angles) that are defined in the Chemical Component Dictionary. The Link column lists molecule types, if any, to which the group is linked. The Z score for a bond length (or angle) is the number of standard deviations the observed value is removed from the expected value. A bond length (or angle) with $|Z| > 2$ is considered an outlier worth inspection. RMSZ is the root-mean-square of all Z scores of the bond lengths (or angles).

Mol	Type	Chain	Res	Link	Bond lengths			Bond angles		
					Counts	RMSZ	# Z > 2	Counts	RMSZ	# Z > 2
3	E0H	A	502	-	15,17,17	2.64	8 (53%)	16,24,24	1.06	1 (6%)
2	FAD	B	501	-	54,58,58	3.61	23 (42%)	71,89,89	1.97	15 (21%)
3	E0H	B	502	-	15,17,17	2.63	8 (53%)	16,24,24	0.95	0

Mol	Type	Chain	Res	Link	Bond lengths			Bond angles		
					Counts	RMSZ	# Z > 2	Counts	RMSZ	# Z > 2
2	FAD	A	501	-	54,58,58	3.57	24 (44%)	71,89,89	1.96	15 (21%)

In the following table, the Chirals column lists the number of chiral outliers, the number of chiral centers analysed, the number of these observed in the model and the number defined in the Chemical Component Dictionary. Similar counts are reported in the Torsion and Rings columns. '-' means no outliers of that kind were identified.

Mol	Type	Chain	Res	Link	Chirals	Torsions	Rings
3	E0H	A	502	-	-	0/2/8/8	0/2/2/2
2	FAD	B	501	-	-	0/30/50/50	0/6/6/6
3	E0H	B	502	-	-	0/2/8/8	0/2/2/2
2	FAD	A	501	-	-	0/30/50/50	0/6/6/6

All (63) bond length outliers are listed below:

Mol	Chain	Res	Type	Atoms	Z	Observed(Å)	Ideal(Å)
2	B	501	FAD	O4B-C1B	16.00	1.61	1.40
2	A	501	FAD	O4B-C1B	15.63	1.61	1.40
2	A	501	FAD	C4X-N5	7.46	1.46	1.30
2	B	501	FAD	C4X-N5	7.37	1.46	1.30
2	A	501	FAD	C10-N1	6.41	1.46	1.33
2	A	501	FAD	O4B-C4B	-6.40	1.30	1.45
2	B	501	FAD	C10-N1	6.31	1.46	1.33
2	B	501	FAD	O4B-C4B	-6.28	1.31	1.45
3	A	502	E0H	C08-C07	-5.99	1.36	1.46
3	B	502	E0H	C08-C07	-5.95	1.36	1.46
2	B	501	FAD	C5X-N5	5.95	1.50	1.39
2	A	501	FAD	C5X-N5	5.93	1.50	1.39
2	B	501	FAD	C9A-N10	5.65	1.50	1.41
2	A	501	FAD	C9A-N10	5.50	1.50	1.41
2	B	501	FAD	C2-N1	5.13	1.48	1.36
2	A	501	FAD	C2-N1	5.09	1.48	1.36
2	B	501	FAD	P-O3P	4.98	1.64	1.59
2	B	501	FAD	PA-O3P	4.94	1.64	1.59
3	A	502	E0H	O03-C02	4.90	1.45	1.30
3	B	502	E0H	O03-C02	4.86	1.44	1.30
2	A	501	FAD	P-O3P	4.84	1.64	1.59
2	A	501	FAD	PA-O3P	4.79	1.64	1.59
2	A	501	FAD	C2-N3	4.72	1.49	1.39
2	B	501	FAD	C2-N3	4.71	1.49	1.39
2	B	501	FAD	C10-N10	3.90	1.45	1.37
2	B	501	FAD	C6A-N6A	3.80	1.47	1.34

Continued on next page...

Continued from previous page...

Mol	Chain	Res	Type	Atoms	Z	Observed(Å)	Ideal(Å)
2	A	501	FAD	C10-N10	3.78	1.45	1.37
2	B	501	FAD	C4-N3	3.75	1.45	1.38
2	A	501	FAD	C6A-N6A	3.73	1.47	1.34
2	A	501	FAD	C4-N3	3.63	1.45	1.38
3	A	502	E0H	C09-C10	3.61	1.44	1.38
3	B	502	E0H	C09-C10	3.50	1.44	1.38
2	A	501	FAD	C8M-C8	3.27	1.57	1.51
2	B	501	FAD	C8M-C8	3.24	1.57	1.51
2	B	501	FAD	C1'-C2'	3.12	1.57	1.52
2	B	501	FAD	C2A-N3A	2.87	1.36	1.32
2	B	501	FAD	O2B-C2B	2.86	1.50	1.43
2	A	501	FAD	C1'-C2'	2.82	1.56	1.52
2	B	501	FAD	O2-C2	-2.76	1.18	1.24
2	A	501	FAD	C2A-N3A	2.72	1.36	1.32
2	A	501	FAD	O2-C2	-2.69	1.19	1.24
2	A	501	FAD	O4-C4	-2.68	1.18	1.23
3	B	502	E0H	C04-C02	2.67	1.58	1.48
2	A	501	FAD	O2B-C2B	2.65	1.49	1.43
3	A	502	E0H	C04-C02	2.55	1.57	1.48
2	B	501	FAD	O2'-C2'	-2.55	1.38	1.43
2	A	501	FAD	O2'-C2'	-2.48	1.38	1.43
2	A	501	FAD	O3B-C3B	-2.47	1.36	1.43
3	B	502	E0H	O01-C02	-2.46	1.15	1.22
3	B	502	E0H	C05-C04	-2.44	1.36	1.38
3	A	502	E0H	C05-C04	-2.44	1.36	1.38
2	B	501	FAD	O4-C4	-2.41	1.19	1.23
3	A	502	E0H	O01-C02	-2.39	1.16	1.22
2	B	501	FAD	O3B-C3B	-2.34	1.37	1.43
3	B	502	E0H	C15-C13	2.23	1.42	1.38
2	B	501	FAD	C4X-C4	2.14	1.52	1.44
3	A	502	E0H	C15-C13	2.09	1.42	1.38
2	A	501	FAD	O4'-C4'	-2.09	1.39	1.43
2	A	501	FAD	C4X-C4	2.08	1.52	1.44
2	A	501	FAD	C5'-C4'	2.08	1.54	1.51
3	A	502	E0H	C09-C08	-2.05	1.35	1.39
3	B	502	E0H	C09-C08	-2.05	1.35	1.39
2	B	501	FAD	O4'-C4'	-2.01	1.39	1.43

All (31) bond angle outliers are listed below:

Mol	Chain	Res	Type	Atoms	Z	Observed(°)	Ideal(°)
2	B	501	FAD	C5A-C6A-N6A	7.68	132.02	120.31

Continued on next page...

Continued from previous page...

Mol	Chain	Res	Type	Atoms	Z	Observed(°)	Ideal(°)
2	A	501	FAD	C5A-C6A-N6A	7.07	131.08	120.31
2	A	501	FAD	N3A-C2A-N1A	-6.45	119.92	128.67
2	B	501	FAD	N3A-C2A-N1A	-6.40	119.98	128.67
2	B	501	FAD	C7M-C7-C6	-5.56	109.77	119.57
2	A	501	FAD	C7M-C7-C6	-5.52	109.84	119.57
2	B	501	FAD	N6A-C6A-N1A	-4.74	108.21	118.33
2	B	501	FAD	C7M-C7-C8	4.70	130.35	120.76
2	A	501	FAD	C7M-C7-C8	4.63	130.22	120.76
2	A	501	FAD	N6A-C6A-N1A	-4.37	108.99	118.33
2	A	501	FAD	C4B-O4B-C1B	-3.51	106.71	109.92
2	A	501	FAD	C4-N3-C2	-3.13	120.08	125.64
2	B	501	FAD	C4-N3-C2	-3.11	120.11	125.64
2	B	501	FAD	C4X-C10-N10	3.08	120.89	116.48
2	A	501	FAD	C4X-C10-N10	2.91	120.65	116.48
2	B	501	FAD	C4B-O4B-C1B	-2.86	107.31	109.92
2	A	501	FAD	C4'-C3'-C2'	-2.81	108.89	113.57
2	A	501	FAD	O4B-C1B-N9A	-2.65	105.24	108.75
2	A	501	FAD	C4X-C4-N3	2.62	119.92	113.25
2	B	501	FAD	C10-C4X-N5	-2.51	119.69	124.81
2	A	501	FAD	C5X-C9A-N10	2.50	120.22	117.97
2	B	501	FAD	C4X-C4-N3	2.48	119.56	113.25
2	A	501	FAD	C10-C4X-N5	-2.42	119.86	124.81
2	B	501	FAD	C5X-C9A-N10	2.35	120.09	117.97
3	A	502	E0H	C15-C08-C07	-2.35	117.52	120.44
2	B	501	FAD	O4B-C1B-N9A	-2.30	105.69	108.75
2	A	501	FAD	C9A-C5X-N5	-2.23	120.09	122.45
2	A	501	FAD	O4-C4-C4X	-2.22	120.67	126.53
2	B	501	FAD	C9A-C5X-N5	-2.20	120.12	122.45
2	B	501	FAD	O4-C4-C4X	-2.11	120.95	126.53
2	B	501	FAD	C4'-C3'-C2'	-2.00	110.24	113.57

There are no chirality outliers.

There are no torsion outliers.

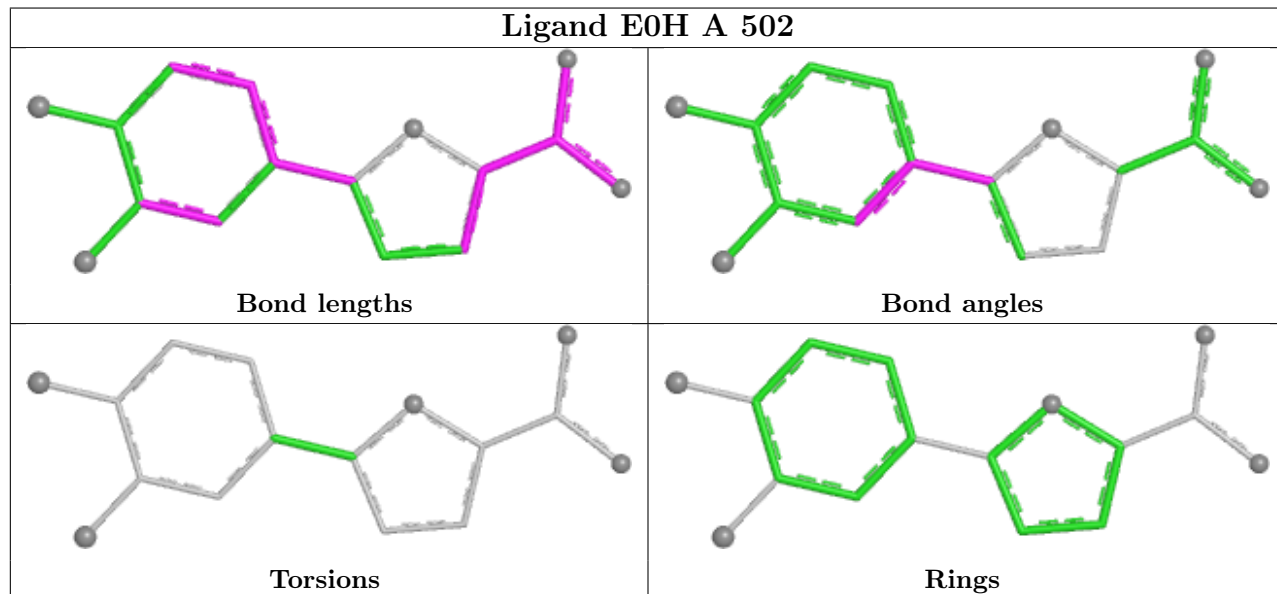
There are no ring outliers.

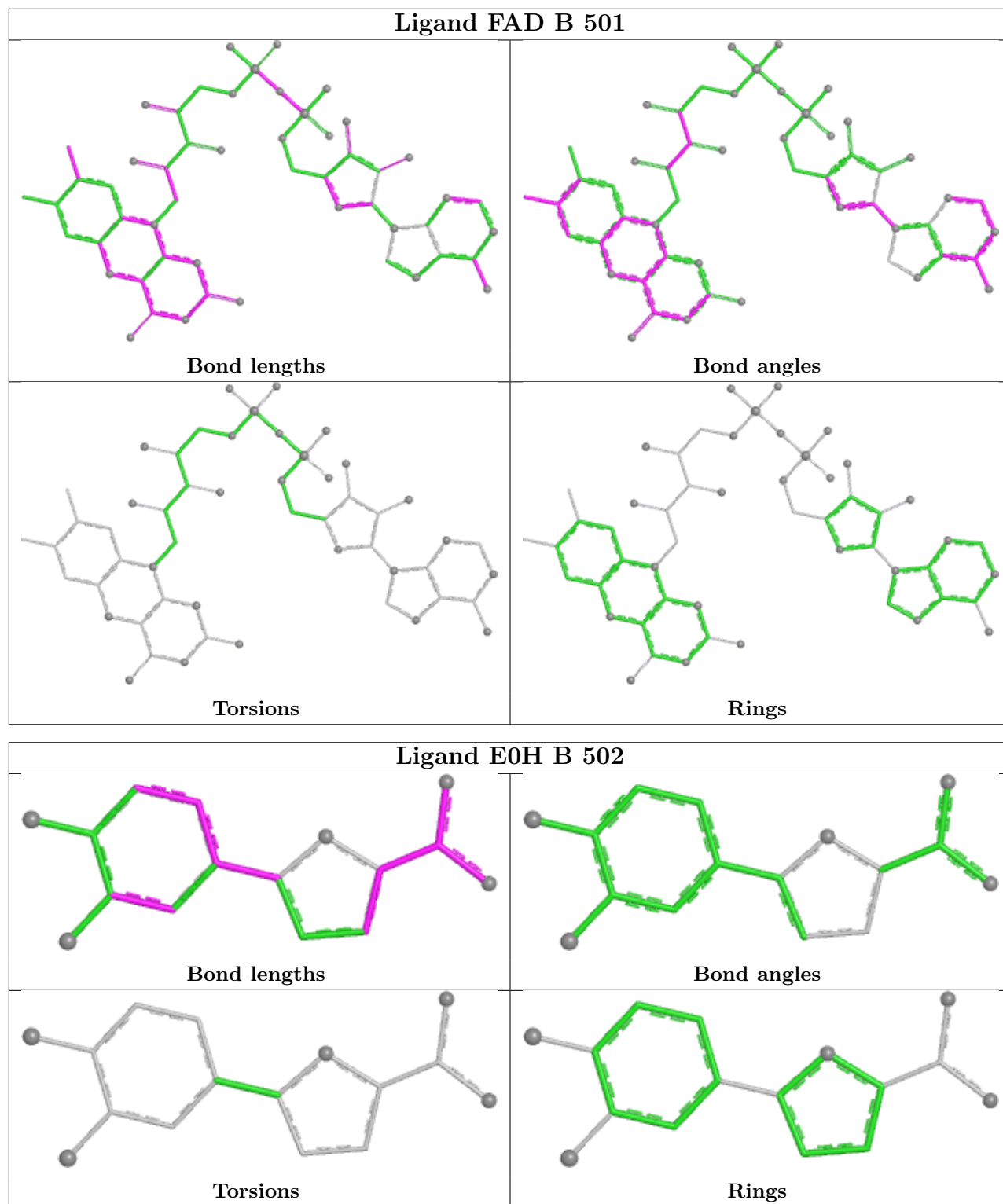
1 monomer is involved in 1 short contact:

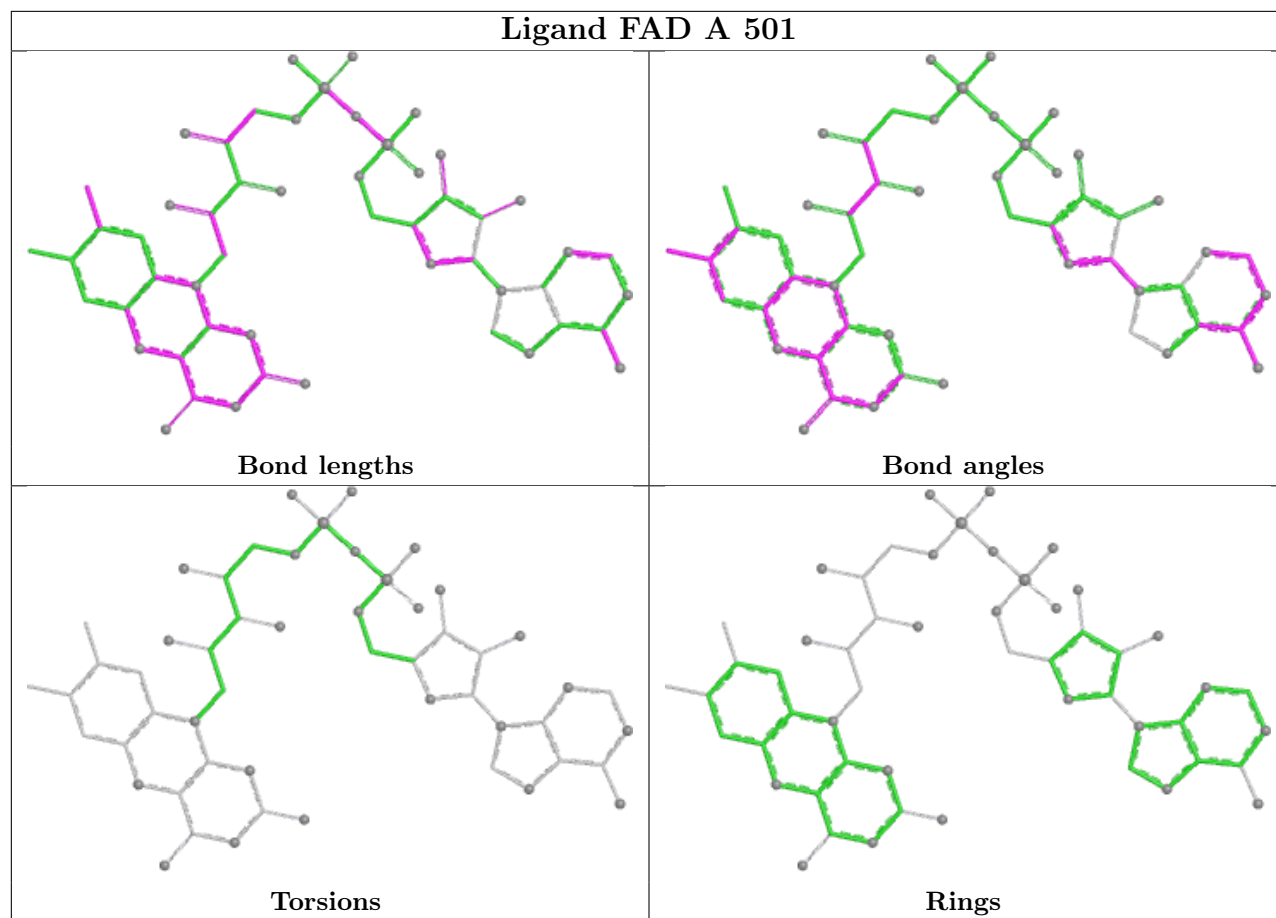
Mol	Chain	Res	Type	Clashes	Symm-Clashes
3	B	502	E0H	1	0

The following is a two-dimensional graphical depiction of Mogul quality analysis of bond lengths, bond angles, torsion angles, and ring geometry for all instances of the Ligand of Interest. In

addition, ligands with molecular weight > 250 and outliers as shown on the validation Tables will also be included. For torsion angles, if less than 5% of the Mogul distribution of torsion angles is within 10 degrees of the torsion angle in question, then that torsion angle is considered an outlier. Any bond that is central to one or more torsion angles identified as an outlier by Mogul will be highlighted in the graph. For rings, the root-mean-square deviation (RMSD) between the ring in question and similar rings identified by Mogul is calculated over all ring torsion angles. If the average RMSD is greater than 60 degrees and the minimal RMSD between the ring in question and any Mogul-identified rings is also greater than 60 degrees, then that ring is considered an outlier. The outliers are highlighted in purple. The color gray indicates Mogul did not find sufficient equivalents in the CSD to analyse the geometry.







5.7 Other polymers [i](#)

There are no such residues in this entry.

5.8 Polymer linkage issues [i](#)

There are no chain breaks in this entry.

6 Fit of model and data

6.1 Protein, DNA and RNA chains

In the following table, the column labelled ‘#RSRZ > 2’ contains the number (and percentage) of RSRZ outliers, followed by percent RSRZ outliers for the chain as percentile scores relative to all X-ray entries and entries of similar resolution. The OWAB column contains the minimum, median, 95th percentile and maximum values of the occupancy-weighted average B-factor per residue. The column labelled ‘Q < 0.9’ lists the number of (and percentage) of residues with an average occupancy less than 0.9.

Mol	Chain	Analysed	<RSRZ>	#RSRZ>2	OWAB(Å ²)	Q<0.9
1	A	441/460 (95%)	0.56	45 (10%) 6 10	25, 43, 107, 140	0
1	B	436/460 (94%)	0.42	27 (6%) 20 27	24, 46, 95, 128	0
All	All	877/920 (95%)	0.49	72 (8%) 11 16	24, 44, 102, 140	0

All (72) RSRZ outliers are listed below:

Mol	Chain	Res	Type	RSRZ
1	A	435	SER	6.3
1	A	442	LEU	6.1
1	A	381	TYR	5.2
1	A	433	ASN	5.1
1	A	437	LEU	5.1
1	A	440	ILE	5.1
1	A	91	PRO	4.9
1	A	438	THR	4.6
1	A	90	THR	4.5
1	A	89	GLY	4.5
1	A	446	GLU	4.2
1	A	392	ALA	4.0
1	A	408	PHE	3.9
1	A	88	PRO	3.9
1	A	382	LEU	3.8
1	B	49	GLY	3.8
1	B	400	ILE	3.8
1	B	48	ARG	3.7
1	A	445	VAL	3.7
1	A	431	VAL	3.7
1	B	390	ILE	3.6
1	A	447	HIS	3.5
1	B	452	CYS	3.4
1	B	437	LEU	3.4

Continued on next page...

Continued from previous page...

Mol	Chain	Res	Type	RSRZ
1	A	426	LEU	3.3
1	B	243	PRO	3.3
1	B	51	SER	3.3
1	A	436	ASP	3.2
1	B	438	THR	3.2
1	B	154	LEU	3.1
1	A	399	PHE	3.1
1	B	381	TYR	3.1
1	A	397	THR	3.0
1	B	149	VAL	3.0
1	B	397	THR	2.9
1	A	455	PRO	2.9
1	A	385	ARG	2.9
1	B	408	PHE	2.9
1	A	99	ARG	2.8
1	A	429	PHE	2.7
1	B	410	ARG	2.7
1	A	48	ARG	2.6
1	A	409	SER	2.6
1	A	248	ALA	2.6
1	A	448	GLU	2.6
1	B	435	SER	2.6
1	A	410	ARG	2.5
1	B	383	LEU	2.5
1	A	154	LEU	2.5
1	B	256	VAL	2.5
1	B	411	LEU	2.4
1	B	426	LEU	2.4
1	B	373	SER	2.4
1	B	409	SER	2.4
1	B	445	VAL	2.4
1	B	50	ARG	2.4
1	A	428	LYS	2.3
1	B	393	GLN	2.3
1	A	387	LEU	2.3
1	A	432	ALA	2.3
1	A	373	SER	2.3
1	A	393	GLN	2.3
1	A	386	GLU	2.2
1	A	406	VAL	2.2
1	A	98	GLY	2.2
1	A	396	PRO	2.2

Continued on next page...

Continued from previous page...

Mol	Chain	Res	Type	RSRZ
1	A	411	LEU	2.2
1	A	452	CYS	2.1
1	B	439	SER	2.1
1	A	93	ASN	2.1
1	A	403	TYR	2.1
1	B	292	ALA	2.0

6.2 Non-standard residues in protein, DNA, RNA chains [i](#)

There are no non-standard protein/DNA/RNA residues in this entry.

6.3 Carbohydrates [i](#)

There are no monosaccharides in this entry.

6.4 Ligands [i](#)

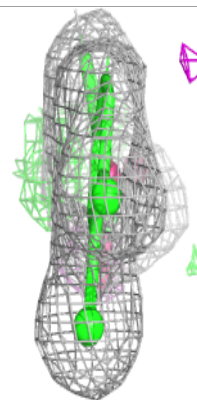
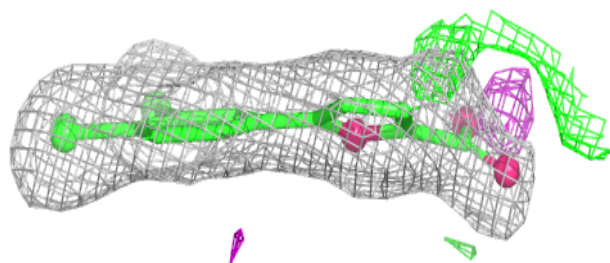
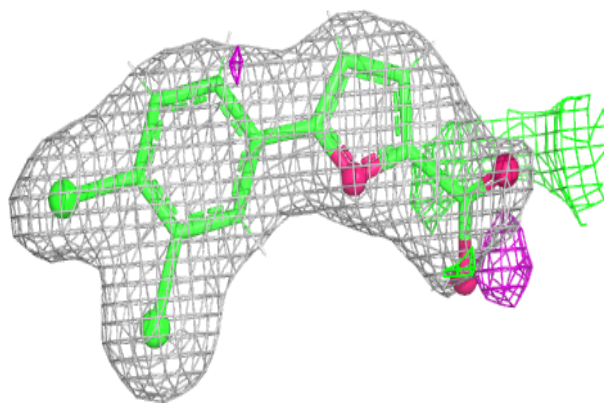
In the following table, the Atoms column lists the number of modelled atoms in the group and the number defined in the chemical component dictionary. The B-factors column lists the minimum, median, 95th percentile and maximum values of B factors of atoms in the group. The column labelled 'Q< 0.9' lists the number of atoms with occupancy less than 0.9.

Mol	Type	Chain	Res	Atoms	RSCC	RSR	B-factors(Å ²)	Q<0.9
3	E0H	A	502	16/16	0.94	0.14	43,50,62,74	0
3	E0H	B	502	16/16	0.95	0.12	41,44,52,60	0
2	FAD	B	501	53/53	0.96	0.13	25,31,43,43	0
2	FAD	A	501	53/53	0.97	0.14	24,29,38,42	0

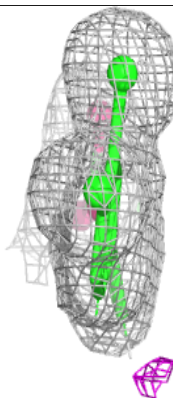
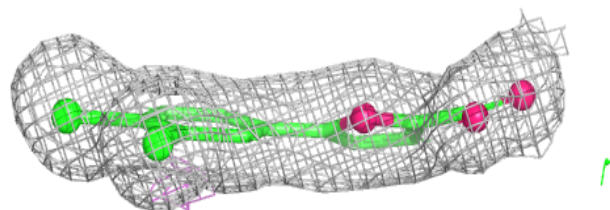
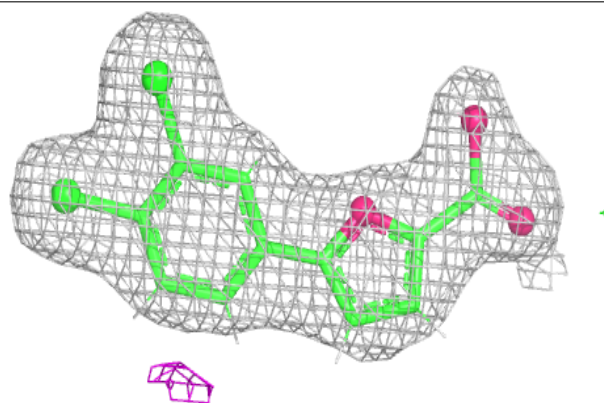
The following is a graphical depiction of the model fit to experimental electron density of all instances of the Ligand of Interest. In addition, ligands with molecular weight > 250 and outliers as shown on the geometry validation Tables will also be included. Each fit is shown from different orientation to approximate a three-dimensional view.

Electron density around E0H A 502:

$2mF_o-DF_c$ (at 0.7 rmsd) in gray
 mF_o-DF_c (at 3 rmsd) in purple (negative)
and green (positive)

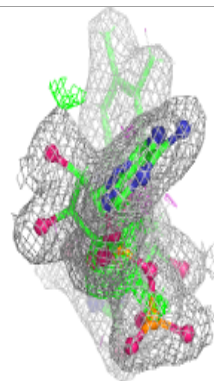
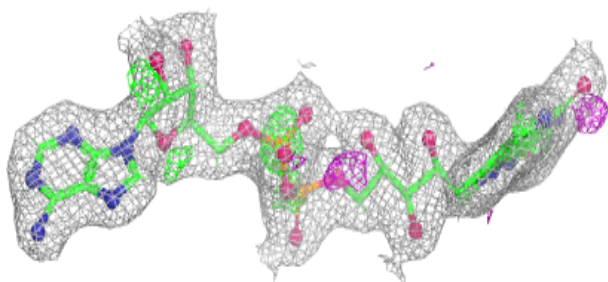
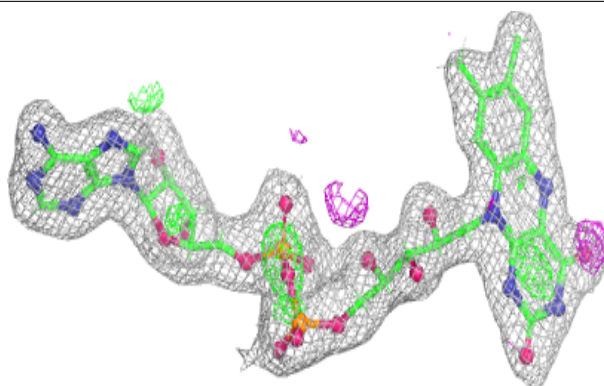
**Electron density around E0H B 502:**

$2mF_o-DF_c$ (at 0.7 rmsd) in gray
 mF_o-DF_c (at 3 rmsd) in purple (negative)
and green (positive)

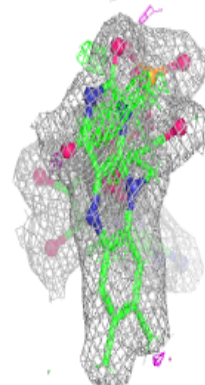
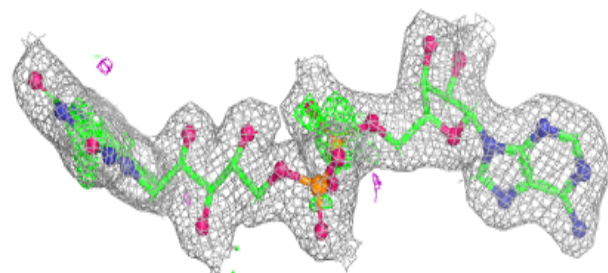
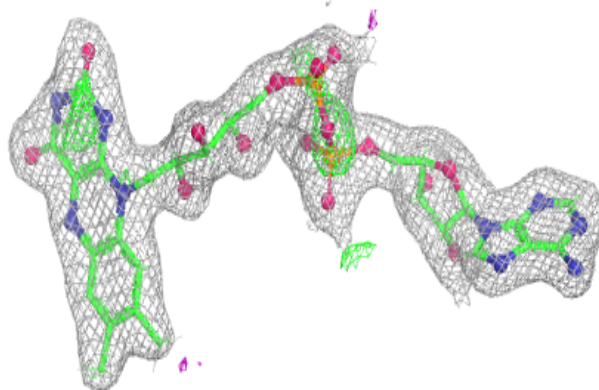


Electron density around FAD B 501:

$2mF_o-DF_c$ (at 0.7 rmsd) in gray
 mF_o-DF_c (at 3 rmsd) in purple (negative)
and green (positive)

**Electron density around FAD A 501:**

$2mF_o-DF_c$ (at 0.7 rmsd) in gray
 mF_o-DF_c (at 3 rmsd) in purple (negative)
and green (positive)



6.5 Other polymers [i](#)

There are no such residues in this entry.