



Full wwPDB X-ray Structure Validation Report ⓘ

Oct 7, 2023 – 04:27 PM EDT

PDB ID : 6DE4
Title : Homo sapiens dihydrofolate reductase complexed with beta-NADPH and 3'-[(2R)-4-(2,4-diamino-6-ethylphenyl)but-3-yn-2-yl]-5'-methoxy-[1,1'-biphenyl]-4-carboxylic acid
Authors : Hajian, B.; Wright, D.
Deposited on : 2018-05-11
Resolution : 2.41 Å(reported)

This is a Full wwPDB X-ray Structure Validation Report for a publicly released PDB entry.

We welcome your comments at validation@mail.wwpdb.org

A user guide is available at

<https://www.wwpdb.org/validation/2017/XrayValidationReportHelp>

with specific help available everywhere you see the ⓘ symbol.

The types of validation reports are described at

<http://www.wwpdb.org/validation/2017/FAQs#types>.

The following versions of software and data (see [references ⓘ](#)) were used in the production of this report:

MolProbity : 4.02b-467
Mogul : 1.8.5 (274361), CSD as541be (2020)
Xtrriage (Phenix) : 1.13
EDS : 2.35.1
buster-report : 1.1.7 (2018)
Percentile statistics : 20191225.v01 (using entries in the PDB archive December 25th 2019)
Refmac : 5.8.0158
CCP4 : 7.0.044 (Gargrove)
Ideal geometry (proteins) : Engh & Huber (2001)
Ideal geometry (DNA, RNA) : Parkinson et al. (1996)
Validation Pipeline (wwPDB-VP) : 2.35.1

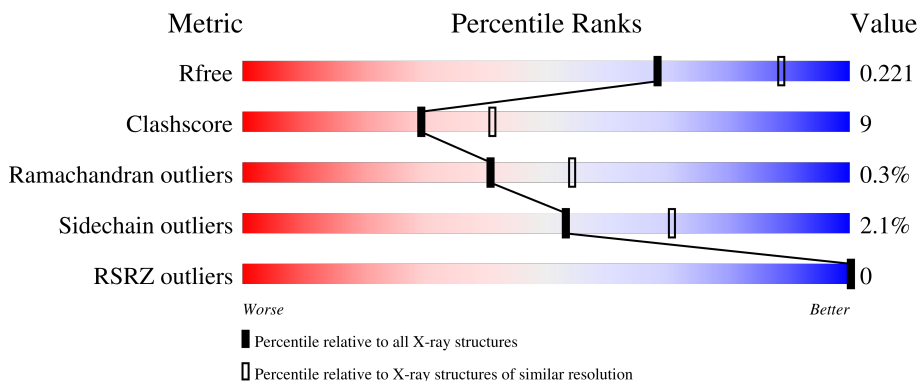
1 Overall quality at a glance

The following experimental techniques were used to determine the structure:

X-RAY DIFFRACTION



The reported resolution of this entry is 2.41 Å.

Percentile scores (ranging between 0-100) for global validation metrics of the entry are shown in the following graphic. The table shows the number of entries on which the scores are based.



Metric	Whole archive (#Entries)	Similar resolution (#Entries, resolution range(Å))
R_{free}	130704	4647 (2.44-2.40)
Clashscore	141614	5161 (2.44-2.40)
Ramachandran outliers	138981	5073 (2.44-2.40)
Sidechain outliers	138945	5074 (2.44-2.40)
RSRZ outliers	127900	4543 (2.44-2.40)

The table below summarises the geometric issues observed across the polymeric chains and their fit to the electron density. The red, orange, yellow and green segments of the lower bar indicate the fraction of residues that contain outliers for ≥ 3 , 2, 1 and 0 types of geometric quality criteria respectively. A grey segment represents the fraction of residues that are not modelled. The numeric value for each fraction is indicated below the corresponding segment, with a dot representing fractions $\leq 5\%$. The upper red bar (where present) indicates the fraction of residues that have poor fit to the electron density. The numeric value is given above the bar.

Mol	Chain	Length	Quality of chain
1	A	186	 83% 17%
1	B	186	 83% 16%

2 Entry composition i

There are 9 unique types of molecules in this entry. The entry contains 3420 atoms, of which 40 are hydrogens and 0 are deuteriums.

In the tables below, the ZeroOcc column contains the number of atoms modelled with zero occupancy, the AltConf column contains the number of residues with at least one atom in alternate conformation and the Trace column contains the number of residues modelled with at most 2 atoms.

- Molecule 1 is a protein called Dihydrofolate reductase.

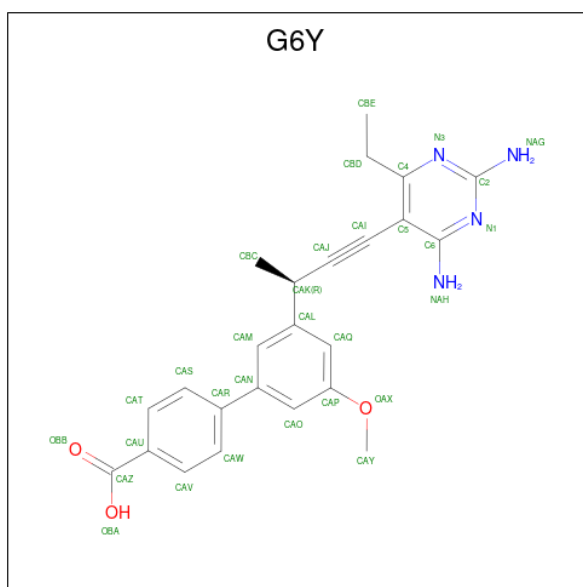
Mol	Chain	Residues	Atoms					ZeroOcc	AltConf	Trace
			Total	C	N	O	S			
1	A	186	Total 1562	1000	265	288	9	0	8	0
1	B	186	Total 1552	992	262	290	8	0	6	0

- Molecule 2 is NADPH DIHYDRO-NICOTINAMIDE-ADENINE-DINUCLEOTIDE PHOSPHATE (three-letter code: NDP) (formula: $C_{21}H_{30}N_7O_{17}P_3$).



Mol	Chain	Residues	Atoms					ZeroOcc	AltConf
			Total	C	N	O	P		
2	A	1	Total 48	21	7	17	3	0	0
2	B	1	Total 48	21	7	17	3	0	0

- Molecule 3 is 3'-[(2R)-4-(2,4-diamino-6-ethylpyrimidin-5-yl)but-3-yn-2-yl]-5'-methoxy[1,1'-biphenyl]-4-carboxylic acid (three-letter code: G6Y) (formula: $C_{24}H_{24}N_4O_3$).



Mol	Chain	Residues	Atoms				ZeroOcc	AltConf
3	A	1	Total	C	N	O	0	0
			31	24	4	3		
3	B	1	Total	C	N	O	0	0
			31	24	4	3		

- Molecule 4 is CHLORIDE ION (three-letter code: CL) (formula: Cl).

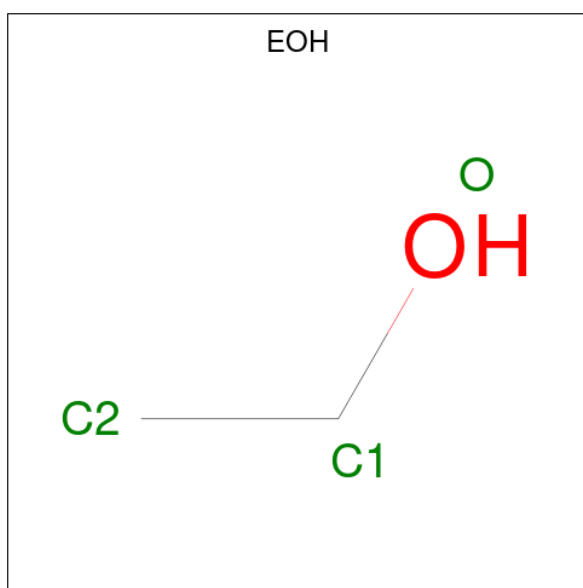
Mol	Chain	Residues	Atoms		ZeroOcc	AltConf
4	A	1	Total	Cl	0	0
			1	1		
4	B	1	Total	Cl	0	0
			1	1		

- Molecule 5 is GLYCEROL (three-letter code: GOL) (formula: C₃H₈O₃).



Mol	Chain	Residues	Atoms				ZeroOcc	AltConf
5	A	1	Total	C	H	O	0	0
			14	3	8	3		
5	A	1	Total	C	H	O	0	0
			14	3	8	3		

- Molecule 6 is ETHANOL (three-letter code: EOH) (formula: C₂H₆O).



Mol	Chain	Residues	Atoms				ZeroOcc	AltConf
6	A	1	Total	C	H	O	0	0
			9	2	6	1		
6	A	1	Total	C	H	O	0	0
			9	2	6	1		

Continued on next page...

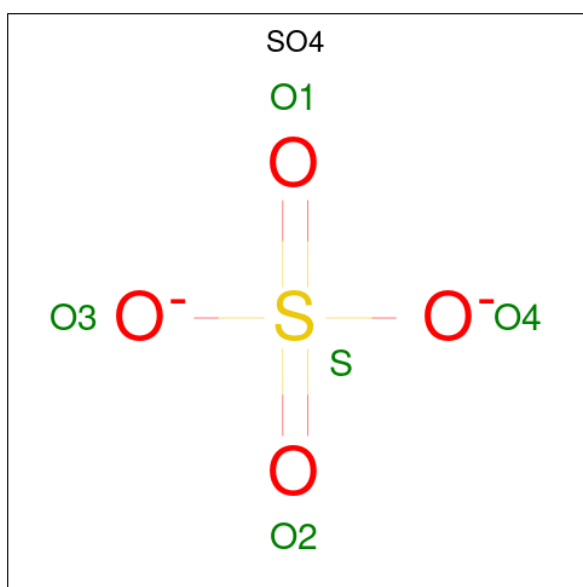
Continued from previous page...

Mol	Chain	Residues	Atoms				ZeroOcc	AltConf
6	B	1	Total	C	H	O	0	0
			9	2	6	1		
6	B	1	Total	C	H	O	0	0
			9	2	6	1		

- Molecule 7 is CALCIUM ION (three-letter code: CA) (formula: Ca).

Mol	Chain	Residues	Atoms		ZeroOcc	AltConf
7	B	2	Total	Ca	0	0
			2	2		

- Molecule 8 is SULFATE ION (three-letter code: SO4) (formula: O₄S).



Mol	Chain	Residues	Atoms			ZeroOcc	AltConf
8	B	1	Total	O	S	0	0
			5	4	1		
8	B	1	Total	O	S	0	0
			5	4	1		


- Molecule 9 is water.

Mol	Chain	Residues	Atoms		ZeroOcc	AltConf
9	A	37	Total	O	0	0
			37	37		
9	B	33	Total	O	0	0
			33	33		

3 Residue-property plots [i](#)


These plots are drawn for all protein, RNA, DNA and oligosaccharide chains in the entry. The first graphic for a chain summarises the proportions of the various outlier classes displayed in the second graphic. The second graphic shows the sequence view annotated by issues in geometry and electron density. Residues are color-coded according to the number of geometric quality criteria for which they contain at least one outlier: green = 0, yellow = 1, orange = 2 and red = 3 or more. A red dot above a residue indicates a poor fit to the electron density ($RSRZ > 2$). Stretches of 2 or more consecutive residues without any outlier are shown as a green connector. Residues present in the sample, but not in the model, are shown in grey.

- Molecule 1: Dihydrofolate reductase

Chain A:  83% 17%



- Molecule 1: Dihydrofolate reductase

Chain B:  83% 16%



4 Data and refinement statistics i

Property	Value	Source
Space group	C 2 2 21	Depositor
Cell constants a, b, c, α , β , γ	104.61Å 104.66Å 144.33Å 90.00° 90.00° 90.00°	Depositor
Resolution (Å)	42.36 – 2.41 42.36 – 2.41	Depositor EDS
% Data completeness (in resolution range)	99.5 (42.36-2.41) 99.4 (42.36-2.41)	Depositor EDS
R_{merge}	(Not available)	Depositor
R_{sym}	0.08	Depositor
$\langle I/\sigma(I) \rangle$ ¹	2.62 (at 2.42Å)	Xtrriage
Refinement program	PHENIX 1.9_1692	Depositor
R, R_{free}	0.181 , 0.221 0.188 , 0.221	Depositor DCC
R_{free} test set	1987 reflections (6.46%)	wwPDB-VP
Wilson B-factor (Å ²)	53.1	Xtrriage
Anisotropy	0.259	Xtrriage
Bulk solvent k_{sol} (e/Å ³), B_{sol} (Å ²)	0.35 , 38.1	EDS
L-test for twinning ²	$\langle L \rangle = 0.50$, $\langle L^2 \rangle = 0.33$	Xtrriage
Estimated twinning fraction	0.487 for -k,-h,-l	Xtrriage
F_o, F_c correlation	0.96	EDS
Total number of atoms	3420	wwPDB-VP
Average B, all atoms (Å ²)	57.0	wwPDB-VP

Xtrriage's analysis on translational NCS is as follows: *The largest off-origin peak in the Patterson function is 5.10% of the height of the origin peak. No significant pseudotranslation is detected.*

¹Intensities estimated from amplitudes.

²Theoretical values of $\langle |L| \rangle$, $\langle L^2 \rangle$ for acentric reflections are 0.5, 0.333 respectively for untwinned datasets, and 0.375, 0.2 for perfectly twinned datasets.

5 Model quality

5.1 Standard geometry

Bond lengths and bond angles in the following residue types are not validated in this section: NDP, G6Y, CL, CA, EOH, SO4, GOL

The Z score for a bond length (or angle) is the number of standard deviations the observed value is removed from the expected value. A bond length (or angle) with $|Z| > 5$ is considered an outlier worth inspection. RMSZ is the root-mean-square of all Z scores of the bond lengths (or angles).

Mol	Chain	Bond lengths		Bond angles	
		RMSZ	# Z >5	RMSZ	# Z >5
1	A	0.39	0/1605	0.54	0/2164
1	B	0.41	0/1588	0.52	0/2142
All	All	0.40	0/3193	0.53	0/4306

There are no bond length outliers.

There are no bond angle outliers.

There are no chirality outliers.

There are no planarity outliers.

5.2 Too-close contacts

In the following table, the Non-H and H(model) columns list the number of non-hydrogen atoms and hydrogen atoms in the chain respectively. The H(added) column lists the number of hydrogen atoms added and optimized by MolProbity. The Clashes column lists the number of clashes within the asymmetric unit, whereas Symm-Clashes lists symmetry-related clashes.

Mol	Chain	Non-H	H(model)	H(added)	Clashes	Symm-Clashes
1	A	1562	0	1574	30	0
1	B	1552	0	1551	24	0
2	A	48	0	26	11	0
2	B	48	0	26	8	0
3	A	31	0	0	0	0
3	B	31	0	0	1	0
4	A	1	0	0	1	0
4	B	1	0	0	0	1
5	A	12	16	16	3	0
6	A	6	12	12	0	1
6	B	6	12	12	0	1

Continued on next page...

Continued from previous page...

Mol	Chain	Non-H	H(model)	H(added)	Clashes	Symm-Clashes
7	B	2	0	0	0	0
8	B	10	0	0	2	0
9	A	37	0	0	8	0
9	B	33	0	0	7	1
All	All	3380	40	3217	62	2

The all-atom clashscore is defined as the number of clashes found per 1000 atoms (including hydrogen atoms). The all-atom clashscore for this structure is 9.

All (62) close contacts within the same asymmetric unit are listed below, sorted by their clash magnitude.

Atom-1	Atom-2	Interatomic distance (Å)	Clash overlap (Å)
4:A:203:CL:CL	9:A:337:HOH:O	2.05	1.11
1:A:123:GLU:OE2	2:A:201:NDP:N6A	1.99	0.95
1:B:111[B]:MET:HE3	1:B:113:TRP:HE1	1.38	0.89
1:B:157:LYS:NZ	9:B:303:HOH:O	2.10	0.84
1:A:91[B]:ARG:NH1	9:A:301:HOH:O	2.01	0.82
1:A:111[B]:MET:HE3	1:A:113:TRP:HE1	1.46	0.81
1:B:116:GLY:HA3	2:B:201:NDP:H5N	1.66	0.78
8:B:206:SO4:O2	9:B:302:HOH:O	2.06	0.73
8:B:207:SO4:O2	9:B:301:HOH:O	2.04	0.73
1:A:116:GLY:HA3	2:A:201:NDP:H5N	1.71	0.72
1:B:3:SER:HB3	1:B:5:ASN:HD21	1.58	0.69
1:B:123:GLU:OE1	9:B:304:HOH:O	2.14	0.66
1:A:111[B]:MET:HE1	9:A:315:HOH:O	1.96	0.65
2:A:201:NDP:O1X	9:A:303:HOH:O	2.14	0.65
1:B:91[A]:ARG:O	2:B:201:NDP:H2A	1.97	0.65
1:A:68:LYS:NZ	9:A:305:HOH:O	2.16	0.64
1:A:30:GLU:HB3	5:A:204:GOL:H31	1.83	0.61
1:B:122:LYS:NZ	9:B:305:HOH:O	2.33	0.61
1:B:87:HIS:N	1:B:87:HIS:ND1	2.49	0.60
1:A:185:ASN:O	1:A:186:ASP:HB2	2.03	0.59
1:A:91[B]:ARG:NH2	9:A:301:HOH:O	2.36	0.59
1:B:111[B]:MET:HE1	9:B:309:HOH:O	2.02	0.59
2:B:201:NDP:H8A	2:B:201:NDP:H52A	1.86	0.58
1:B:87:HIS:HB2	1:B:88:PHE:CD2	2.39	0.57
1:B:91[B]:ARG:O	2:B:201:NDP:H2A	2.03	0.57
1:A:55:LYS:HB2	2:A:201:NDP:O3	2.05	0.57
1:B:55:LYS:HB2	2:B:201:NDP:O3	2.05	0.56
1:A:111[B]:MET:SD	5:A:205:GOL:O2	2.65	0.55
1:A:55:LYS:HD2	2:A:201:NDP:H51A	1.91	0.51

Continued on next page...

Continued from previous page...

Atom-1	Atom-2	Interatomic distance (Å)	Clash overlap (Å)
1:B:148:PHE:CD1	1:B:149:PRO:HD2	2.46	0.51
1:A:111[A]:MET:HE2	1:A:113:TRP:CZ2	2.45	0.50
1:B:10:VAL:CG2	1:B:14:MET:HA	2.42	0.50
1:A:26:PRO:HA	5:A:204:GOL:O2	2.15	0.47
1:A:91[B]:ARG:O	2:A:201:NDP:H2A	2.14	0.47
1:A:91[A]:ARG:O	2:A:201:NDP:H2A	2.14	0.47
1:A:2:GLY:N	1:A:110:ASP:O	2.39	0.45
2:A:201:NDP:N6A	9:A:306:HOH:O	2.31	0.45
1:A:10[B]:VAL:CG1	1:A:14:MET:HA	2.47	0.45
1:A:10[A]:VAL:CG2	1:A:14:MET:HA	2.47	0.44
1:A:87:HIS:HB2	1:A:88:PHE:CD2	2.52	0.44
1:A:105:LEU:HA	1:A:105:LEU:HD23	1.76	0.44
1:B:2:GLY:O	1:B:111[B]:MET:HA	2.18	0.44
1:B:116:GLY:HA3	2:B:201:NDP:C5N	2.43	0.43
1:B:24:TRP:HB2	1:B:25[B]:PRO:HD2	2.01	0.42
1:A:115:VAL:O	2:A:201:NDP:H5N	2.20	0.42
1:A:4:LEU:HD11	1:A:114:ILE:CD1	2.50	0.42
1:B:30:GLU:OE1	3:B:202:G6Y:NAG	2.53	0.42
1:A:116:GLY:HA3	2:A:201:NDP:C5N	2.45	0.41
1:B:156:TYR:CD1	1:B:184:LYS:HB3	2.56	0.41
1:A:139[A]:MET:O	1:A:140:GLN:HB3	2.20	0.41
1:A:122:LYS:HG3	1:A:149:PRO:HG3	2.03	0.41
1:A:148:PHE:HA	1:A:149:PRO:HD3	1.92	0.41
2:B:201:NDP:H8A	2:B:201:NDP:C5B	2.51	0.41
1:A:87:HIS:CD2	9:A:318:HOH:O	2.74	0.41
1:B:105:LEU:HD23	1:B:105:LEU:HA	1.85	0.41
1:A:119:SER:HA	1:A:122:LYS:HE3	2.03	0.40
2:A:201:NDP:H52A	2:A:201:NDP:H8A	2.03	0.40
1:B:119:SER:HB2	2:B:201:NDP:N7A	2.37	0.40
1:A:24:TRP:HB2	1:A:25[B]:PRO:HD2	2.03	0.40
1:B:25[B]:PRO:HA	1:B:26:PRO:HD3	1.96	0.40
1:B:28:ARG:NH2	9:B:306:HOH:O	2.34	0.40
1:B:185:ASN:O	1:B:186:ASP:HB2	2.21	0.40

All (2) symmetry-related close contacts are listed below. The label for Atom-2 includes the symmetry operator and encoded unit-cell translations to be applied.

Atom-1	Atom-2	Interatomic distance (Å)	Clash overlap (Å)
4:B:205:CL:CL	9:B:333:HOH:O[3_657]	1.93	0.27
6:A:207:EOH:O	6:B:209:EOH:O[7_557]	2.00	0.20

5.3 Torsion angles [i](#)

5.3.1 Protein backbone [i](#)

In the following table, the Percentiles column shows the percent Ramachandran outliers of the chain as a percentile score with respect to all X-ray entries followed by that with respect to entries of similar resolution.

The Analysed column shows the number of residues for which the backbone conformation was analysed, and the total number of residues.

Mol	Chain	Analysed	Favoured	Allowed	Outliers	Percentiles	
1	A	192/186 (103%)	188 (98%)	4 (2%)	0	100	100
1	B	190/186 (102%)	186 (98%)	3 (2%)	1 (0%)	29	40
All	All	382/372 (103%)	374 (98%)	7 (2%)	1 (0%)	41	54

All (1) Ramachandran outliers are listed below:

Mol	Chain	Res	Type
1	B	3	SER

5.3.2 Protein sidechains [i](#)

In the following table, the Percentiles column shows the percent sidechain outliers of the chain as a percentile score with respect to all X-ray entries followed by that with respect to entries of similar resolution.

The Analysed column shows the number of residues for which the sidechain conformation was analysed, and the total number of residues.

Mol	Chain	Analysed	Rotameric	Outliers	Percentiles	
1	A	176/168 (105%)	173 (98%)	3 (2%)	60	77
1	B	174/168 (104%)	170 (98%)	4 (2%)	50	68
All	All	350/336 (104%)	343 (98%)	7 (2%)	53	72

All (7) residues with a non-rotameric sidechain are listed below:

Mol	Chain	Res	Type
1	A	21	ASP
1	A	131	LEU
1	A	146	THR
1	B	87	HIS
1	B	98	LYS

Continued on next page...

Continued from previous page...

Mol	Chain	Res	Type
1	B	131	LEU
1	B	146	THR

Sometimes sidechains can be flipped to improve hydrogen bonding and reduce clashes. There are no such sidechains identified.

5.3.3 RNA [i](#)

There are no RNA molecules in this entry.

5.4 Non-standard residues in protein, DNA, RNA chains [i](#)

There are no non-standard protein/DNA/RNA residues in this entry.

5.5 Carbohydrates [i](#)

There are no monosaccharides in this entry.

5.6 Ligand geometry [i](#)

Of 16 ligands modelled in this entry, 4 are monoatomic - leaving 12 for Mogul analysis.

In the following table, the Counts columns list the number of bonds (or angles) for which Mogul statistics could be retrieved, the number of bonds (or angles) that are observed in the model and the number of bonds (or angles) that are defined in the Chemical Component Dictionary. The Link column lists molecule types, if any, to which the group is linked. The Z score for a bond length (or angle) is the number of standard deviations the observed value is removed from the expected value. A bond length (or angle) with $|Z| > 2$ is considered an outlier worth inspection. RMSZ is the root-mean-square of all Z scores of the bond lengths (or angles).

Mol	Type	Chain	Res	Link	Bond lengths			Bond angles		
					Counts	RMSZ	# $ Z > 2$	Counts	RMSZ	# $ Z > 2$
5	GOL	A	205	-	5,5,5	0.35	0	5,5,5	0.33	0
3	G6Y	A	202	-	32,33,33	2.85	6 (18%)	41,46,46	1.80	9 (21%)
8	SO4	B	207	-	4,4,4	0.14	0	6,6,6	0.33	0
5	GOL	A	204	-	5,5,5	0.54	0	5,5,5	0.54	0
6	EOH	B	208	-	2,2,2	0.44	0	1,1,1	0.19	0
6	EOH	A	207	-	2,2,2	0.48	0	1,1,1	0.24	0
6	EOH	B	209	-	2,2,2	0.52	0	1,1,1	0.14	0
6	EOH	A	206	-	2,2,2	0.38	0	1,1,1	0.22	0

Mol	Type	Chain	Res	Link	Bond lengths			Bond angles		
					Counts	RMSZ	# Z > 2	Counts	RMSZ	# Z > 2
2	NDP	A	201	-	45,52,52	2.20	6 (13%)	53,80,80	1.59	11 (20%)
3	G6Y	B	202	-	32,33,33	2.91	6 (18%)	41,46,46	1.89	9 (21%)
8	SO4	B	206	-	4,4,4	0.17	0	6,6,6	0.16	0
2	NDP	B	201	-	45,52,52	2.16	6 (13%)	53,80,80	1.56	10 (18%)

In the following table, the Chirals column lists the number of chiral outliers, the number of chiral centers analysed, the number of these observed in the model and the number defined in the Chemical Component Dictionary. Similar counts are reported in the Torsion and Rings columns. '-' means no outliers of that kind were identified.

Mol	Type	Chain	Res	Link	Chirals	Torsions	Rings
5	GOL	A	205	-	-	0/4/4/4	-
3	G6Y	A	202	-	-	2/18/21/21	0/3/3/3
5	GOL	A	204	-	-	2/4/4/4	-
2	NDP	A	201	-	-	6/30/77/77	0/5/5/5
3	G6Y	B	202	-	-	4/18/21/21	0/3/3/3
2	NDP	B	201	-	-	6/30/77/77	0/5/5/5

All (24) bond length outliers are listed below:

Mol	Chain	Res	Type	Atoms	Z	Observed(Å)	Ideal(Å)
3	A	202	G6Y	CAL-CAK	-13.10	1.40	1.52
3	B	202	G6Y	CAL-CAK	-12.46	1.40	1.52
2	A	201	NDP	P2B-O2B	11.44	1.80	1.59
2	B	201	NDP	P2B-O2B	10.64	1.79	1.59
3	B	202	G6Y	CAI-CAJ	-6.44	1.12	1.19
3	A	202	G6Y	CBD-C4	-5.82	1.41	1.51
3	B	202	G6Y	CBD-C4	-5.67	1.41	1.51
2	B	201	NDP	PN-O5D	4.75	1.78	1.59
2	A	201	NDP	PN-O5D	4.69	1.78	1.59
3	A	202	G6Y	CAU-CAZ	-4.06	1.40	1.49
3	B	202	G6Y	CAU-CAZ	-3.94	1.41	1.49
3	A	202	G6Y	CAI-CAJ	-3.45	1.15	1.19
3	B	202	G6Y	CAR-CAN	-3.35	1.40	1.49
3	A	202	G6Y	CAR-CAN	-3.27	1.40	1.49
2	B	201	NDP	C4A-N3A	3.23	1.40	1.35
2	A	201	NDP	O2B-C2B	-3.22	1.32	1.44
2	B	201	NDP	O2B-C2B	-3.09	1.32	1.44
2	B	201	NDP	C7N-N7N	2.90	1.41	1.33
2	A	201	NDP	C7N-N7N	2.61	1.40	1.33

Continued on next page...

Continued from previous page...

Mol	Chain	Res	Type	Atoms	Z	Observed(Å)	Ideal(Å)
2	B	201	NDP	C2A-N1A	2.54	1.38	1.33
2	A	201	NDP	C4A-N3A	2.32	1.38	1.35
3	B	202	G6Y	C5-C6	-2.30	1.39	1.42
2	A	201	NDP	C2A-N1A	2.19	1.38	1.33
3	A	202	G6Y	C5-C6	-2.01	1.39	1.42

All (39) bond angle outliers are listed below:

Mol	Chain	Res	Type	Atoms	Z	Observed(°)	Ideal(°)
3	B	202	G6Y	C2-N3-C4	6.57	121.72	116.24
3	A	202	G6Y	C2-N3-C4	6.53	121.68	116.24
2	B	201	NDP	PN-O3-PA	-5.10	115.31	132.83
2	A	201	NDP	PN-O3-PA	-5.08	115.38	132.83
3	B	202	G6Y	CBD-C4-C5	-3.66	120.05	122.66
3	A	202	G6Y	CAY-OAX-CAP	-3.56	109.78	117.51
3	B	202	G6Y	NAH-C6-N1	3.46	121.92	117.03
3	B	202	G6Y	C5-C6-NAH	-3.43	117.66	121.62
3	A	202	G6Y	C5-C6-NAH	-3.20	117.93	121.62
3	B	202	G6Y	CAY-OAX-CAP	-3.16	110.65	117.51
3	A	202	G6Y	NAH-C6-N1	3.13	121.46	117.03
3	A	202	G6Y	CBD-C4-C5	-3.02	120.50	122.66
2	B	201	NDP	PA-O5B-C5B	-2.92	104.56	121.68
3	B	202	G6Y	N3-C2-N1	-2.91	120.86	125.42
2	A	201	NDP	PA-O5B-C5B	-2.88	104.81	121.68
2	A	201	NDP	C3N-C2N-N1N	-2.79	119.12	123.10
3	A	202	G6Y	N3-C2-N1	-2.77	121.08	125.42
2	A	201	NDP	PN-O5D-C5D	-2.73	105.65	121.68
2	A	201	NDP	O5D-PN-O1N	-2.72	98.43	109.07
2	B	201	NDP	O5D-PN-O1N	-2.67	98.63	109.07
2	B	201	NDP	PN-O5D-C5D	-2.65	106.13	121.68
3	B	202	G6Y	C2-N1-C6	2.59	119.85	116.99
2	B	201	NDP	O2B-P2B-O1X	-2.58	99.42	109.39
2	B	201	NDP	C3N-C2N-N1N	-2.58	119.41	123.10
2	A	201	NDP	O3X-P2B-O2X	2.58	117.49	107.64
3	A	202	G6Y	C2-N1-C6	2.52	119.77	116.99
2	A	201	NDP	C2A-N1A-C6A	-2.52	114.45	118.75
2	B	201	NDP	O3X-P2B-O2X	2.47	117.06	107.64
2	B	201	NDP	O3X-P2B-O2B	-2.45	95.02	105.99
2	A	201	NDP	O2B-P2B-O1X	-2.44	99.99	109.39
2	A	201	NDP	O3X-P2B-O2B	-2.42	95.13	105.99
2	A	201	NDP	O4B-C4B-C3B	2.39	109.84	105.11
2	B	201	NDP	C3B-C2B-C1B	-2.38	98.41	102.89

Continued on next page...

Continued from previous page...

Mol	Chain	Res	Type	Atoms	Z	Observed(°)	Ideal(°)
3	B	202	G6Y	CBD-C4-N3	2.26	121.60	116.66
3	A	202	G6Y	NAG-C2-N3	2.22	120.71	117.25
3	B	202	G6Y	CBC-CAK-CAJ	-2.19	106.80	111.00
3	A	202	G6Y	CBD-C4-N3	2.08	121.21	116.66
2	B	201	NDP	O4B-C4B-C3B	2.06	109.19	105.11
2	A	201	NDP	O2A-PA-O1A	2.03	122.28	112.24

There are no chirality outliers.

All (20) torsion outliers are listed below:

Mol	Chain	Res	Type	Atoms
5	A	204	GOL	C1-C2-C3-O3
2	A	201	NDP	O4B-C4B-C5B-O5B
2	A	201	NDP	C3B-C4B-C5B-O5B
2	A	201	NDP	C3D-C4D-C5D-O5D
2	B	201	NDP	O4D-C4D-C5D-O5D
2	B	201	NDP	C3D-C4D-C5D-O5D
2	A	201	NDP	O4D-C4D-C5D-O5D
5	A	204	GOL	O2-C2-C3-O3
3	B	202	G6Y	C5-CAI-CAJ-CAK
2	A	201	NDP	O4D-C1D-N1N-C2N
2	B	201	NDP	O4D-C1D-N1N-C2N
2	B	201	NDP	C3B-C4B-C5B-O5B
3	A	202	G6Y	CAJ-CAK-CAL-CAM
3	A	202	G6Y	CAJ-CAK-CAL-CAQ
3	B	202	G6Y	CAJ-CAK-CAL-CAM
3	B	202	G6Y	CAJ-CAK-CAL-CAQ
2	B	201	NDP	O4B-C4B-C5B-O5B
2	A	201	NDP	C2B-O2B-P2B-O1X
2	B	201	NDP	C2B-O2B-P2B-O3X
3	B	202	G6Y	C5-C4-CBD-CBE

There are no ring outliers.

9 monomers are involved in 26 short contacts:

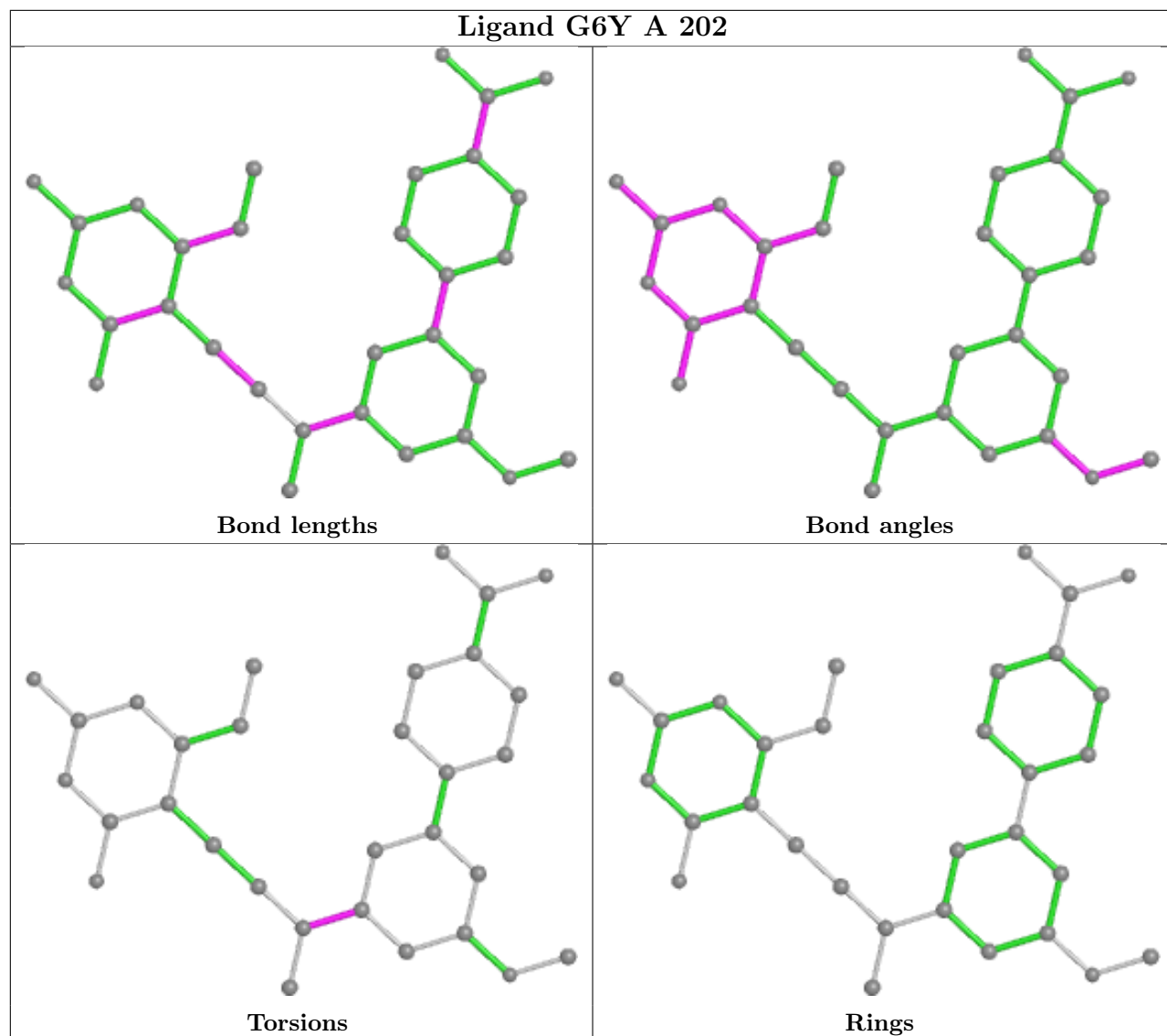
Mol	Chain	Res	Type	Clashes	Symm-Clashes
5	A	205	GOL	1	0
8	B	207	SO4	1	0
5	A	204	GOL	2	0
6	A	207	EOH	0	1
6	B	209	EOH	0	1

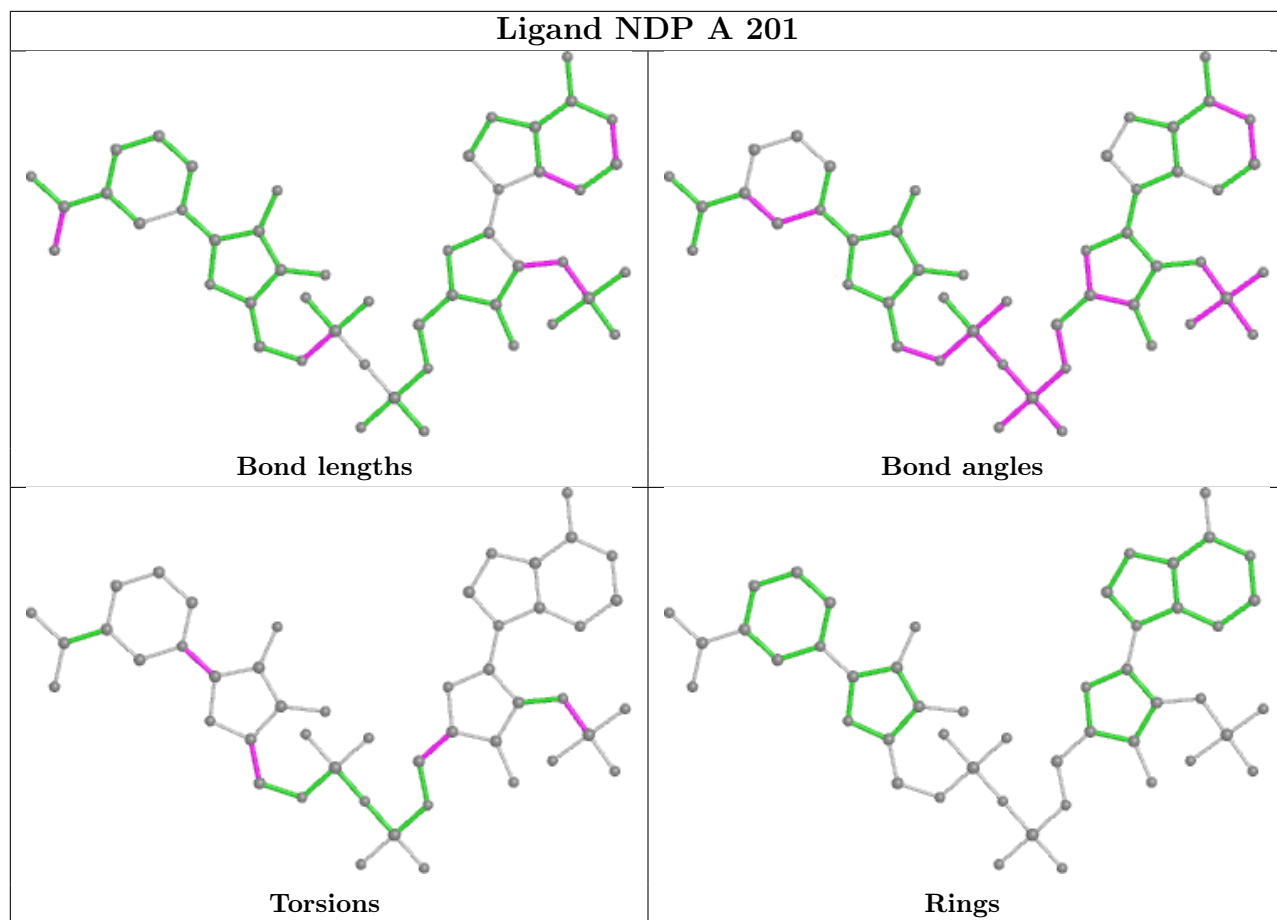
Continued on next page...

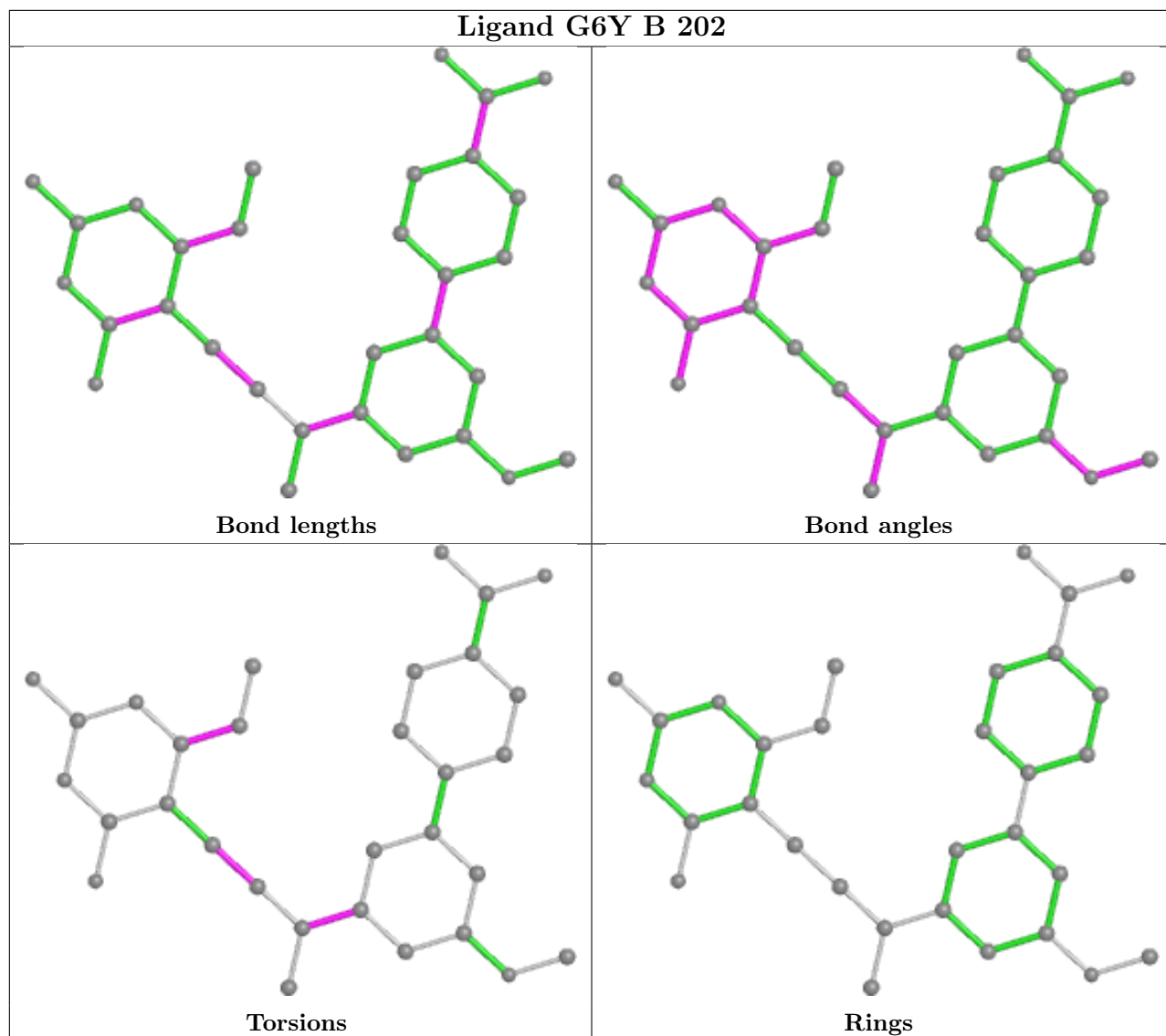
Continued from previous page...

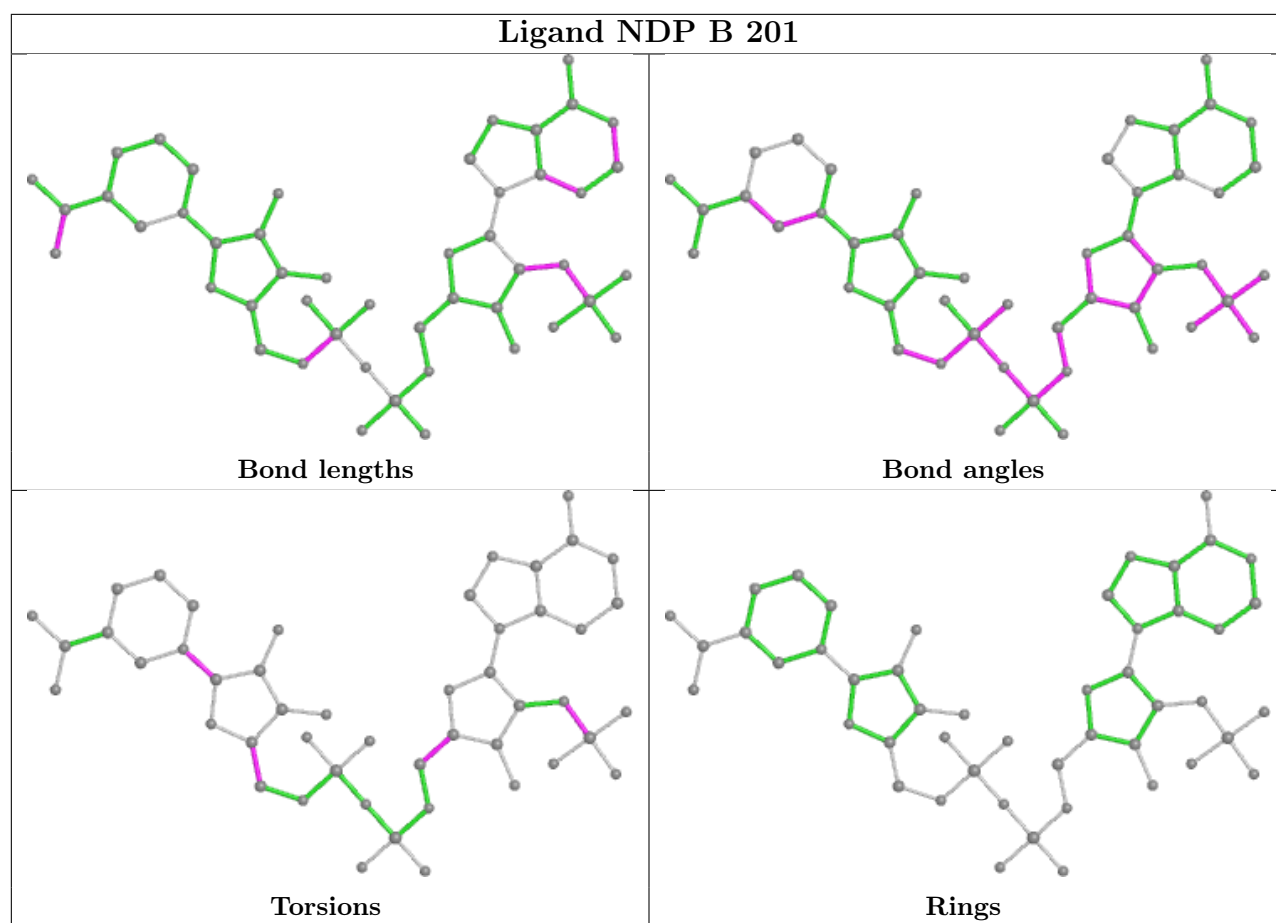
Mol	Chain	Res	Type	Clashes	Symm-Clashes
2	A	201	NDP	11	0
3	B	202	G6Y	1	0
8	B	206	SO4	1	0
2	B	201	NDP	8	0

The following is a two-dimensional graphical depiction of Mogul quality analysis of bond lengths, bond angles, torsion angles, and ring geometry for all instances of the Ligand of Interest. In addition, ligands with molecular weight > 250 and outliers as shown on the validation Tables will also be included. For torsion angles, if less than 5% of the Mogul distribution of torsion angles is within 10 degrees of the torsion angle in question, then that torsion angle is considered an outlier. Any bond that is central to one or more torsion angles identified as an outlier by Mogul will be highlighted in the graph. For rings, the root-mean-square deviation (RMSD) between the ring in question and similar rings identified by Mogul is calculated over all ring torsion angles. If the average RMSD is greater than 60 degrees and the minimal RMSD between the ring in question and any Mogul-identified rings is also greater than 60 degrees, then that ring is considered an outlier. The outliers are highlighted in purple. The color gray indicates Mogul did not find sufficient equivalents in the CSD to analyse the geometry.









5.7 Other polymers [i](#)

There are no such residues in this entry.

5.8 Polymer linkage issues [i](#)

There are no chain breaks in this entry.

6 Fit of model and data [i](#)

6.1 Protein, DNA and RNA chains [i](#)

In the following table, the column labelled '#RSRZ > 2' contains the number (and percentage) of RSRZ outliers, followed by percent RSRZ outliers for the chain as percentile scores relative to all X-ray entries and entries of similar resolution. The OWAB column contains the minimum, median, 95th percentile and maximum values of the occupancy-weighted average B-factor per residue. The column labelled 'Q < 0.9' lists the number of (and percentage) of residues with an average occupancy less than 0.9.

Mol	Chain	Analysed	<RSRZ>	#RSRZ>2	OWAB(Å ²)	Q<0.9
1	A	186/186 (100%)	0.09	0 100 100	38, 54, 82, 102	0
1	B	186/186 (100%)	0.09	0 100 100	38, 53, 80, 105	0
All	All	372/372 (100%)	0.09	0 100 100	38, 53, 81, 105	0

There are no RSRZ outliers to report.

6.2 Non-standard residues in protein, DNA, RNA chains [i](#)

There are no non-standard protein/DNA/RNA residues in this entry.

6.3 Carbohydrates [i](#)

There are no monosaccharides in this entry.

6.4 Ligands [i](#)

In the following table, the Atoms column lists the number of modelled atoms in the group and the number defined in the chemical component dictionary. The B-factors column lists the minimum, median, 95th percentile and maximum values of B factors of atoms in the group. The column labelled 'Q < 0.9' lists the number of atoms with occupancy less than 0.9.

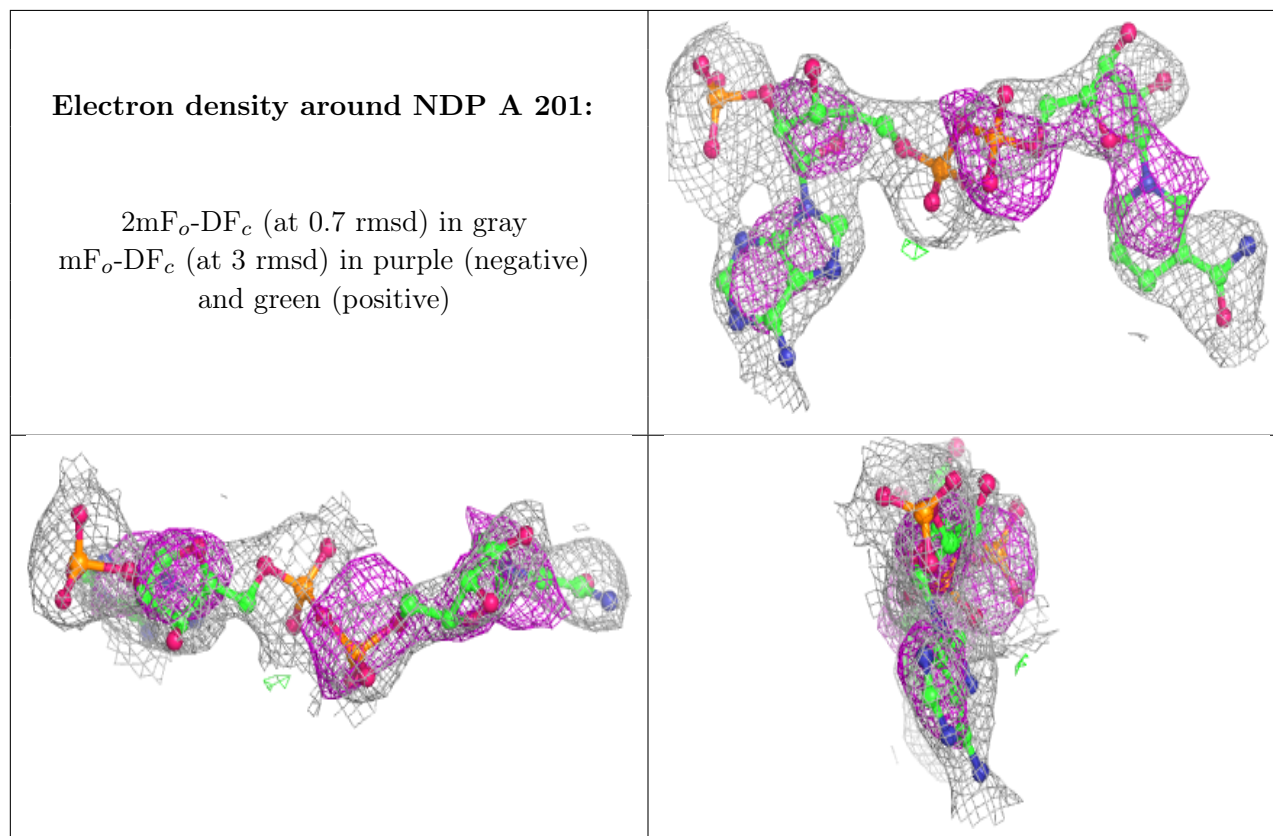
Mol	Type	Chain	Res	Atoms	RSCC	RSR	B-factors(Å ²)	Q<0.9
8	SO4	B	206	5/5	0.77	0.13	69,92,115,127	0
6	EOH	A	206	3/3	0.82	0.17	52,62,94,103	0
8	SO4	B	207	5/5	0.82	0.11	72,88,98,128	0
5	GOL	A	204	6/6	0.85	0.24	53,77,93,95	0
7	CA	B	204	1/1	0.87	0.18	90,90,90,90	0
2	NDP	A	201	48/48	0.90	0.32	48,79,93,112	0
2	NDP	B	201	48/48	0.92	0.33	50,78,94,110	0

Continued on next page...

Continued from previous page...

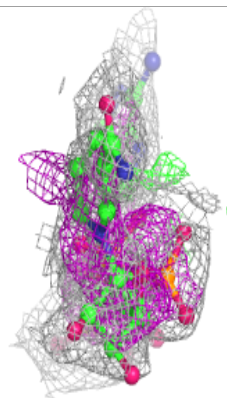
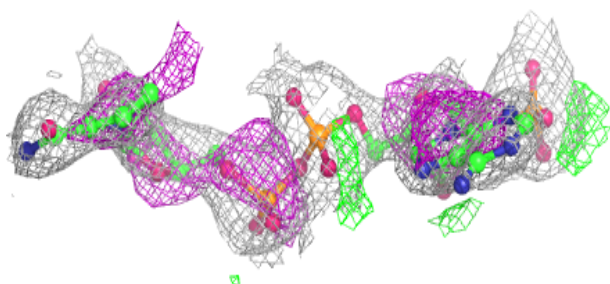
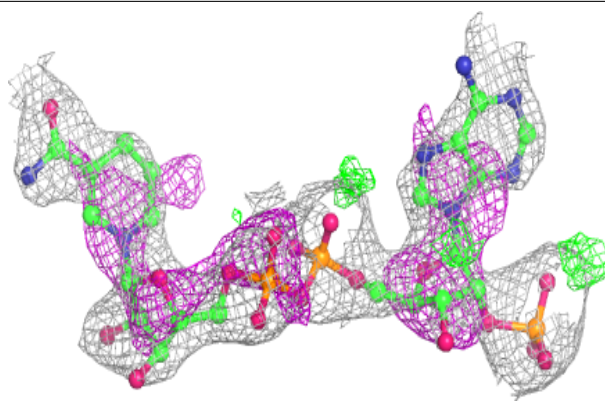
Mol	Type	Chain	Res	Atoms	RSCC	RSR	B-factors(\AA^2)	Q<0.9
6	EOH	B	208	3/3	0.93	0.13	59,71,90,92	0
5	GOL	A	205	6/6	0.93	0.10	80,96,112,113	0
3	G6Y	B	202	31/31	0.95	0.18	36,55,72,90	0
6	EOH	A	207	3/3	0.95	0.17	88,105,115,115	0
3	G6Y	A	202	31/31	0.96	0.21	38,54,73,86	0
6	EOH	B	209	3/3	0.96	0.18	63,94,120,120	0
7	CA	B	203	1/1	0.96	0.35	54,54,54,54	0
4	CL	A	203	1/1	0.99	0.34	53,53,53,53	0
4	CL	B	205	1/1	0.99	0.36	53,53,53,53	0

The following is a graphical depiction of the model fit to experimental electron density of all instances of the Ligand of Interest. In addition, ligands with molecular weight > 250 and outliers as shown on the geometry validation Tables will also be included. Each fit is shown from different orientation to approximate a three-dimensional view.

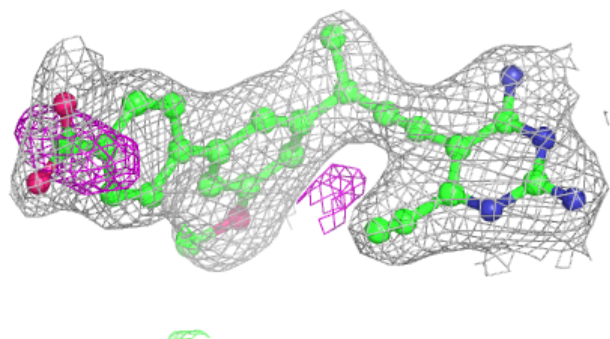
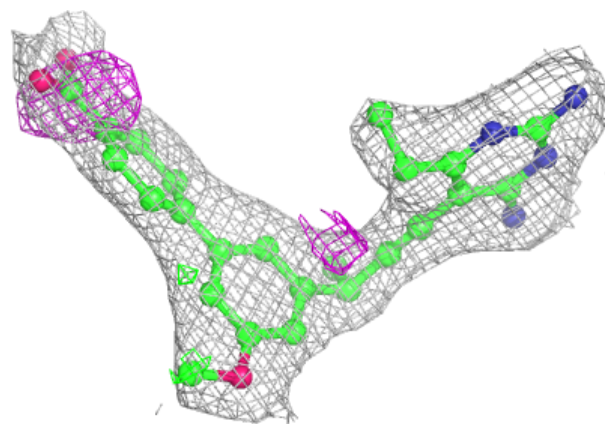


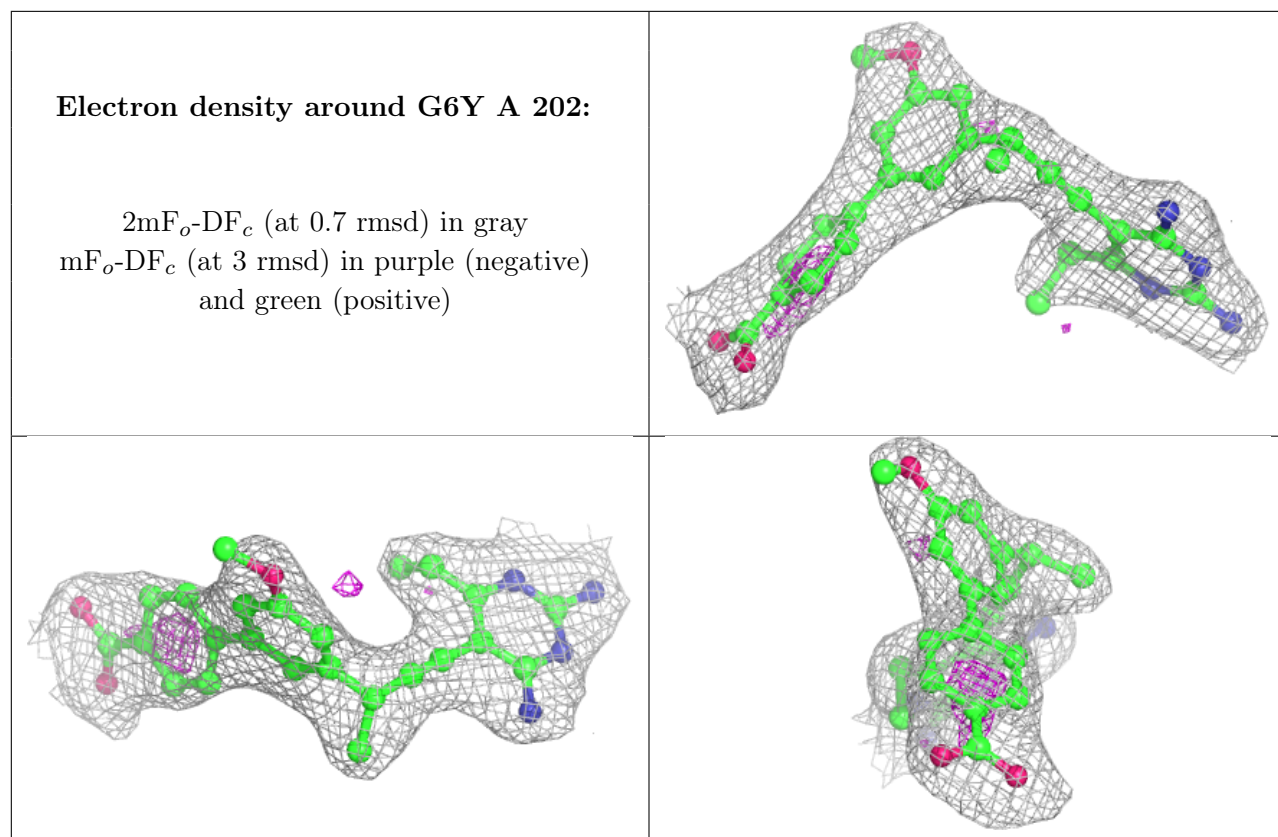
Electron density around NDP B 201:

$2mF_o-DF_c$ (at 0.7 rmsd) in gray
 mF_o-DF_c (at 3 rmsd) in purple (negative)
and green (positive)

**Electron density around G6Y B 202:**

$2mF_o-DF_c$ (at 0.7 rmsd) in gray
 mF_o-DF_c (at 3 rmsd) in purple (negative)
and green (positive)





6.5 Other polymers [i](#)

There are no such residues in this entry.