



Full wwPDB X-ray Structure Validation Report ⓘ

Oct 7, 2023 – 04:17 PM EDT

PDB ID : 6DDT
Title : mouse beta-mannosidase (MANBA)
Authors : Gytz, H.; Liang, J.; Liang, Y.; Gorelik, A.; Illes, K.; Nagar, B.
Deposited on : 2018-05-10
Resolution : 2.10 Å(reported)

This is a Full wwPDB X-ray Structure Validation Report for a publicly released PDB entry.

We welcome your comments at validation@mail.wwpdb.org

A user guide is available at

<https://www.wwpdb.org/validation/2017/XrayValidationReportHelp>

with specific help available everywhere you see the ⓘ symbol.

The types of validation reports are described at

<http://www.wwpdb.org/validation/2017/FAQs#types>.

The following versions of software and data (see [references ⓘ](#)) were used in the production of this report:

MolProbity : 4.02b-467
Mogul : 1.8.5 (274361), CSD as541be (2020)
Xtrriage (Phenix) : 1.13
EDS : 2.35.1
Percentile statistics : 20191225.v01 (using entries in the PDB archive December 25th 2019)
Refmac : 5.8.0158
CCP4 : 7.0.044 (Gargrove)
Ideal geometry (proteins) : Engh & Huber (2001)
Ideal geometry (DNA, RNA) : Parkinson et al. (1996)
Validation Pipeline (wwPDB-VP) : 2.35.1

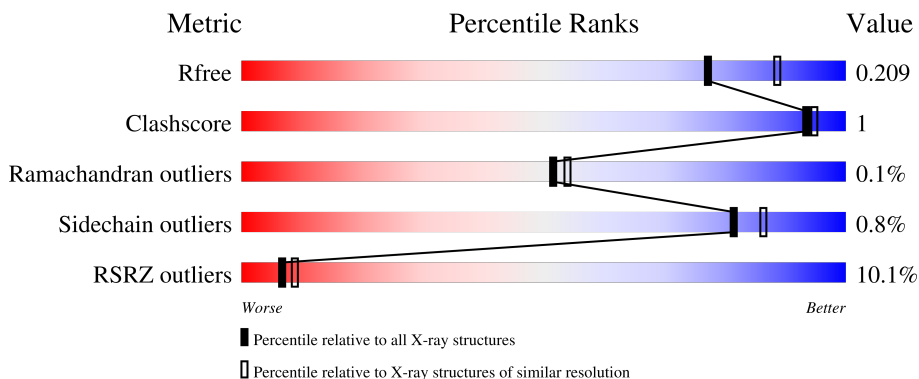
1 Overall quality at a glance

The following experimental techniques were used to determine the structure:

X-RAY DIFFRACTION

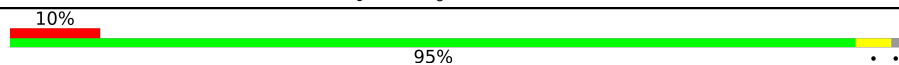
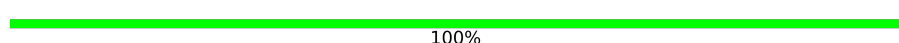


The reported resolution of this entry is 2.10 Å.

Percentile scores (ranging between 0-100) for global validation metrics of the entry are shown in the following graphic. The table shows the number of entries on which the scores are based.



Metric	Whole archive (#Entries)	Similar resolution (#Entries, resolution range(Å))
R_{free}	130704	5197 (2.10-2.10)
Clashscore	141614	5710 (2.10-2.10)
Ramachandran outliers	138981	5647 (2.10-2.10)
Sidechain outliers	138945	5648 (2.10-2.10)
RSRZ outliers	127900	5083 (2.10-2.10)

The table below summarises the geometric issues observed across the polymeric chains and their fit to the electron density. The red, orange, yellow and green segments of the lower bar indicate the fraction of residues that contain outliers for ≥ 3 , 2, 1 and 0 types of geometric quality criteria respectively. A grey segment represents the fraction of residues that are not modelled. The numeric value for each fraction is indicated below the corresponding segment, with a dot representing fractions $\leq 5\%$. The upper red bar (where present) indicates the fraction of residues that have poor fit to the electron density. The numeric value is given above the bar.

Mol	Chain	Length	Quality of chain
1	A	868	
2	B	2	
3	C	2	
4	D	3	

2 Entry composition i

There are 8 unique types of molecules in this entry. The entry contains 14687 atoms, of which 6955 are hydrogens and 0 are deuteriums.

In the tables below, the ZeroOcc column contains the number of atoms modelled with zero occupancy, the AltConf column contains the number of residues with at least one atom in alternate conformation and the Trace column contains the number of residues modelled with at most 2 atoms.

- Molecule 1 is a protein called Beta-mannosidase.

Mol	Chain	Residues	Atoms					ZeroOcc	AltConf	Trace	
			Total	C	H	N	O				S
1	A	862	13817	4530	6802	1175	1284	26	0	0	0

There are 10 discrepancies between the modelled and reference sequences:

Chain	Residue	Modelled	Actual	Comment	Reference
A	12	ASP	-	expression tag	UNP Q8K2I4
A	13	ARG	-	expression tag	UNP Q8K2I4
A	14	HIS	-	expression tag	UNP Q8K2I4
A	15	HIS	-	expression tag	UNP Q8K2I4
A	16	HIS	-	expression tag	UNP Q8K2I4
A	17	HIS	-	expression tag	UNP Q8K2I4
A	18	HIS	-	expression tag	UNP Q8K2I4
A	19	HIS	-	expression tag	UNP Q8K2I4
A	20	LYS	-	expression tag	UNP Q8K2I4
A	21	LEU	-	expression tag	UNP Q8K2I4

- Molecule 2 is an oligosaccharide called alpha-L-fucopyranose-(1-6)-2-acetamido-2-deoxy-beta-D-glucopyranose.



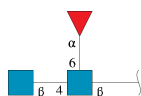
Mol	Chain	Residues	Atoms					ZeroOcc	AltConf	Trace
			Total	C	H	N	O			
2	B	2	48	14	24	1	9	0	0	0

- Molecule 3 is an oligosaccharide called 2-acetamido-2-deoxy-beta-D-glucopyranose-(1-4)-2-acetamido-2-deoxy-beta-D-glucopyranose.



Mol	Chain	Residues	Atoms					ZeroOcc	AltConf	Trace
			Total	C	H	N	O			
3	C	2	54	16	26	2	10	0	0	0

- Molecule 4 is an oligosaccharide called 2-acetamido-2-deoxy-beta-D-glucopyranose-(1-4)-[alpha-L-fucopyranose-(1-6)]2-acetamido-2-deoxy-beta-D-glucopyranose.

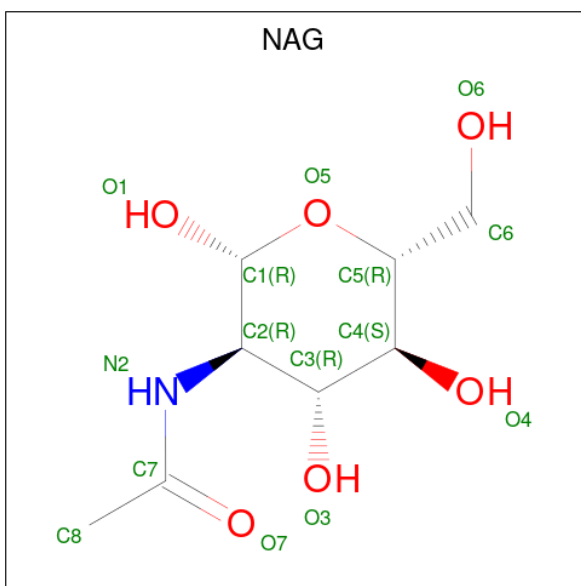


Mol	Chain	Residues	Atoms					ZeroOcc	AltConf	Trace
			Total	C	H	N	O			
4	D	3	75	22	37	2	14	0	0	0

- Molecule 5 is CALCIUM ION (three-letter code: CA) (formula: Ca).

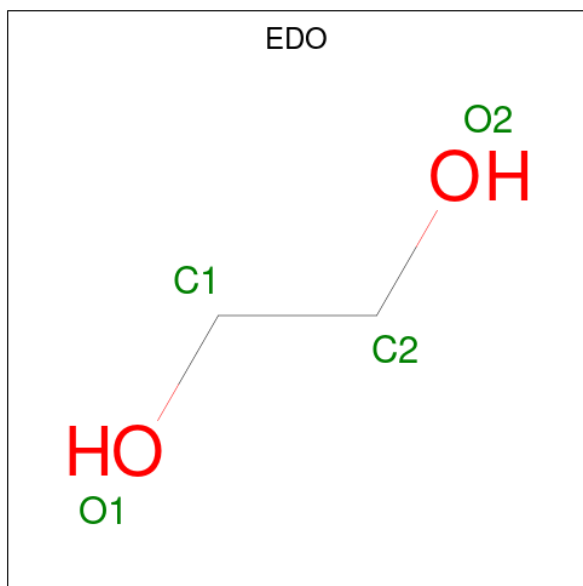
Mol	Chain	Residues	Atoms		ZeroOcc	AltConf
5	A	1	Total	Ca	0	0
			1	1		

- Molecule 6 is 2-acetamido-2-deoxy-beta-D-glucopyranose (three-letter code: NAG) (formula: C₈H₁₅NO₆).



Mol	Chain	Residues	Atoms				ZeroOcc	AltConf	
6	A	1	Total	C	H	N	O	0	0
			28	8	14	1	5		
6	A	1	Total	C	H	N	O	0	0
			28	8	14	1	5		
6	A	1	Total	C	H	N	O	0	0
			28	8	14	1	5		

- Molecule 7 is 1,2-ETHANEDIOL (three-letter code: EDO) (formula: C₂H₆O₂).



Mol	Chain	Residues	Atoms			ZeroOcc	AltConf	
7	A	1	Total	C	H	O	0	0
			10	2	6	2		
7	A	1	Total	C	H	O	0	0
			10	2	6	2		
7	A	1	Total	C	H	O	0	0
			10	2	6	2		
7	A	1	Total	C	H	O	0	0
			10	2	6	2		

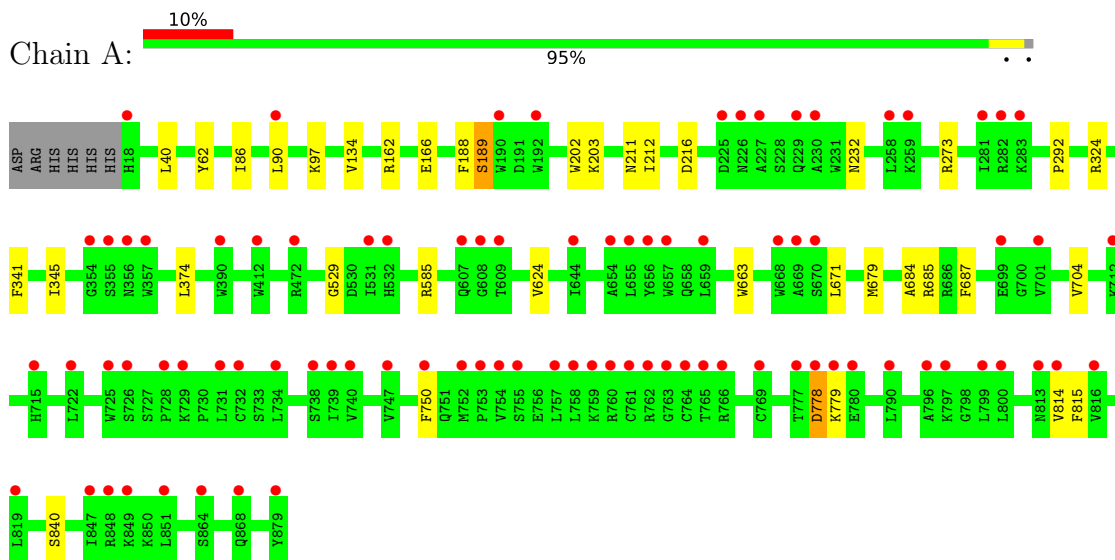
- Molecule 8 is water.

Mol	Chain	Residues	Atoms		ZeroOcc	AltConf
8	A	568	Total	O	0	0
			568	568		

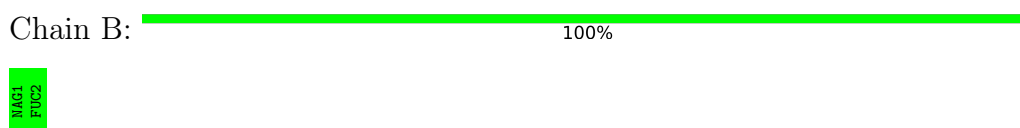
3 Residue-property plots

These plots are drawn for all protein, RNA, DNA and oligosaccharide chains in the entry. The first graphic for a chain summarises the proportions of the various outlier classes displayed in the second graphic. The second graphic shows the sequence view annotated by issues in geometry and electron density. Residues are color-coded according to the number of geometric quality criteria for which they contain at least one outlier: green = 0, yellow = 1, orange = 2 and red = 3 or more. A red dot above a residue indicates a poor fit to the electron density ($RSRZ > 2$). Stretches of 2 or more consecutive residues without any outlier are shown as a green connector. Residues present in the sample, but not in the model, are shown in grey.

- Molecule 1: Beta-mannosidase



- Molecule 2: alpha-L-fucopyranose-(1-6)-2-acetamido-2-deoxy-beta-D-glucopyranose



- Molecule 3: 2-acetamido-2-deoxy-beta-D-glucopyranose-(1-4)-2-acetamido-2-deoxy-beta-D-glucopyranose



- Molecule 4: 2-acetamido-2-deoxy-beta-D-glucopyranose-(1-4)-[alpha-L-fucopyranose-(1-6)]2-acetamido-2-deoxy-beta-D-glucopyranose





4 Data and refinement statistics i

Property	Value	Source
Space group	P 1 21 1	Depositor
Cell constants a, b, c, α , β , γ	80.58Å 65.46Å 104.41Å 90.00° 92.42° 90.00°	Depositor
Resolution (Å)	46.15 – 2.10 46.15 – 2.10	Depositor EDS
% Data completeness (in resolution range)	76.6 (46.15-2.10) 76.2 (46.15-2.10)	Depositor EDS
R_{merge}	(Not available)	Depositor
R_{sym}	(Not available)	Depositor
$\langle I/\sigma(I) \rangle$ ¹	2.69 (at 2.10Å)	Xtrriage
Refinement program	PHENIX (1.10.1_2155: ???)	Depositor
R, R_{free}	0.174 , 0.206 0.176 , 0.209	Depositor DCC
R_{free} test set	1996 reflections (3.87%)	wwPDB-VP
Wilson B-factor (Å ²)	23.7	Xtrriage
Anisotropy	0.134	Xtrriage
Bulk solvent k_{sol} (e/Å ³), B_{sol} (Å ²)	0.38 , 51.2	EDS
L-test for twinning ²	$\langle L \rangle = 0.49$, $\langle L^2 \rangle = 0.32$	Xtrriage
Estimated twinning fraction	0.024 for h,-k,-l	Xtrriage
F_o, F_c correlation	0.95	EDS
Total number of atoms	14687	wwPDB-VP
Average B, all atoms (Å ²)	43.0	wwPDB-VP

Xtrriage's analysis on translational NCS is as follows: *The largest off-origin peak in the Patterson function is 4.70% of the height of the origin peak. No significant pseudotranslation is detected.*

¹Intensities estimated from amplitudes.

²Theoretical values of $\langle |L| \rangle$, $\langle L^2 \rangle$ for acentric reflections are 0.5, 0.333 respectively for untwinned datasets, and 0.375, 0.2 for perfectly twinned datasets.

5 Model quality [i](#)

5.1 Standard geometry [i](#)

Bond lengths and bond angles in the following residue types are not validated in this section: FUC, NAG, CA, EDO

The Z score for a bond length (or angle) is the number of standard deviations the observed value is removed from the expected value. A bond length (or angle) with $|Z| > 5$ is considered an outlier worth inspection. RMSZ is the root-mean-square of all Z scores of the bond lengths (or angles).

Mol	Chain	Bond lengths		Bond angles	
		RMSZ	# Z >5	RMSZ	# Z >5
1	A	0.27	0/7223	0.47	0/9814

There are no bond length outliers.

There are no bond angle outliers.

There are no chirality outliers.

There are no planarity outliers.

5.2 Too-close contacts [i](#)

In the following table, the Non-H and H(model) columns list the number of non-hydrogen atoms and hydrogen atoms in the chain respectively. The H(added) column lists the number of hydrogen atoms added and optimized by MolProbity. The Clashes column lists the number of clashes within the asymmetric unit, whereas Symm-Clashes lists symmetry-related clashes.

Mol	Chain	Non-H	H(model)	H(added)	Clashes	Symm-Clashes
1	A	7015	6802	6801	20	0
2	B	24	24	22	0	0
3	C	28	26	25	0	0
4	D	38	37	34	0	0
5	A	1	0	0	0	0
6	A	42	42	39	0	0
7	A	16	24	24	0	0
8	A	568	0	0	2	0
All	All	7732	6955	6945	20	0

The all-atom clashscore is defined as the number of clashes found per 1000 atoms (including hydrogen atoms). The all-atom clashscore for this structure is 1.

All (20) close contacts within the same asymmetric unit are listed below, sorted by their clash

magnitude.

Atom-1	Atom-2	Interatomic distance (Å)	Clash overlap (Å)
1:A:97:LYS:NZ	8:A:1003:HOH:O	2.28	0.64
1:A:62:TYR:O	1:A:585:ARG:NH2	2.30	0.56
1:A:778:ASP:O	1:A:779:LYS:HB3	2.12	0.49
1:A:216:ASP:OD2	1:A:273:ARG:NH2	2.46	0.48
1:A:778:ASP:O	1:A:779:LYS:CB	2.61	0.47
1:A:685:ARG:NH1	1:A:840:SER:O	2.49	0.46
1:A:684:ALA:HA	1:A:687:PHE:CZ	2.50	0.45
1:A:778:ASP:OD1	1:A:778:ASP:N	2.48	0.45
1:A:341:PHE:CD1	1:A:529:GLY:HA2	2.51	0.45
1:A:162:ARG:NH1	1:A:166:GLU:OE2	2.49	0.45
1:A:202:TRP:CZ3	1:A:203:LYS:HE2	2.52	0.45
1:A:90:LEU:HD11	1:A:134:VAL:HG13	2.00	0.43
1:A:624:VAL:HA	1:A:679:MET:CE	2.48	0.43
1:A:188:PHE:O	1:A:189:SER:CB	2.66	0.43
1:A:86:ILE:HD11	1:A:90:LEU:CD2	2.48	0.43
1:A:232:ASN:ND2	8:A:1031:HOH:O	2.50	0.43
1:A:292:PRO:HD3	1:A:345:ILE:HG21	2.00	0.42
1:A:814:VAL:HG12	1:A:815:PHE:N	2.35	0.42
1:A:704:VAL:HB	1:A:750:PHE:HB3	2.01	0.42
1:A:211:ASN:O	1:A:212:ILE:HB	2.21	0.40

There are no symmetry-related clashes.

5.3 Torsion angles [i](#)

5.3.1 Protein backbone [i](#)

In the following table, the Percentiles column shows the percent Ramachandran outliers of the chain as a percentile score with respect to all X-ray entries followed by that with respect to entries of similar resolution.

The Analysed column shows the number of residues for which the backbone conformation was analysed, and the total number of residues.

Mol	Chain	Analysed	Favoured	Allowed	Outliers	Percentiles
1	A	860/868 (99%)	824 (96%)	35 (4%)	1 (0%)	51 54

All (1) Ramachandran outliers are listed below:

Mol	Chain	Res	Type
1	A	189	SER

5.3.2 Protein sidechains [i](#)

In the following table, the Percentiles column shows the percent sidechain outliers of the chain as a percentile score with respect to all X-ray entries followed by that with respect to entries of similar resolution.

The Analysed column shows the number of residues for which the sidechain conformation was analysed, and the total number of residues.

Mol	Chain	Analysed	Rotameric	Outliers	Percentiles
1	A	770/776 (99%)	764 (99%)	6 (1%)	81 86

All (6) residues with a non-rotameric sidechain are listed below:

Mol	Chain	Res	Type
1	A	40	LEU
1	A	324	ARG
1	A	374	LEU
1	A	663	TRP
1	A	671	LEU
1	A	778	ASP

Sometimes sidechains can be flipped to improve hydrogen bonding and reduce clashes. There are no such sidechains identified.

5.3.3 RNA [i](#)

There are no RNA molecules in this entry.

5.4 Non-standard residues in protein, DNA, RNA chains [i](#)

There are no non-standard protein/DNA/RNA residues in this entry.

5.5 Carbohydrates [i](#)

7 monosaccharides are modelled in this entry.

In the following table, the Counts columns list the number of bonds (or angles) for which Mogul statistics could be retrieved, the number of bonds (or angles) that are observed in the model and

the number of bonds (or angles) that are defined in the Chemical Component Dictionary. The Link column lists molecule types, if any, to which the group is linked. The Z score for a bond length (or angle) is the number of standard deviations the observed value is removed from the expected value. A bond length (or angle) with $|Z| > 2$ is considered an outlier worth inspection. RMSZ is the root-mean-square of all Z scores of the bond lengths (or angles).

Mol	Type	Chain	Res	Link	Bond lengths			Bond angles		
					Counts	RMSZ	# Z > 2	Counts	RMSZ	# Z > 2
2	NAG	B	1	2,1	14,14,15	0.21	0	17,19,21	0.52	0
2	FUC	B	2	2	10,10,11	0.82	0	14,14,16	0.79	0
3	NAG	C	1	3,1	14,14,15	0.24	0	17,19,21	0.98	1 (5%)
3	NAG	C	2	3	14,14,15	0.38	0	17,19,21	0.36	0
4	NAG	D	1	4,1	14,14,15	0.57	0	17,19,21	1.26	2 (11%)
4	NAG	D	2	4	14,14,15	0.33	0	17,19,21	0.35	0
4	FUC	D	3	4	10,10,11	1.18	2 (20%)	14,14,16	1.35	1 (7%)

In the following table, the Chirals column lists the number of chiral outliers, the number of chiral centers analysed, the number of these observed in the model and the number defined in the Chemical Component Dictionary. Similar counts are reported in the Torsion and Rings columns. '-' means no outliers of that kind were identified.

Mol	Type	Chain	Res	Link	Chirals	Torsions	Rings
2	NAG	B	1	2,1	-	0/6/23/26	0/1/1/1
2	FUC	B	2	2	-	-	0/1/1/1
3	NAG	C	1	3,1	-	0/6/23/26	0/1/1/1
3	NAG	C	2	3	-	2/6/23/26	0/1/1/1
4	NAG	D	1	4,1	-	1/6/23/26	0/1/1/1
4	NAG	D	2	4	-	0/6/23/26	0/1/1/1
4	FUC	D	3	4	-	-	0/1/1/1

All (2) bond length outliers are listed below:

Mol	Chain	Res	Type	Atoms	Z	Observed(Å)	Ideal(Å)
4	D	3	FUC	C1-C2	2.98	1.59	1.52
4	D	3	FUC	C2-C3	2.01	1.55	1.52

All (4) bond angle outliers are listed below:

Mol	Chain	Res	Type	Atoms	Z	Observed(°)	Ideal(°)
4	D	3	FUC	C1-C2-C3	4.05	114.64	109.67
4	D	1	NAG	C1-O5-C5	3.60	117.08	112.19
3	C	1	NAG	C1-O5-C5	3.22	116.55	112.19
4	D	1	NAG	C4-C3-C2	-2.14	107.89	111.02

There are no chirality outliers.

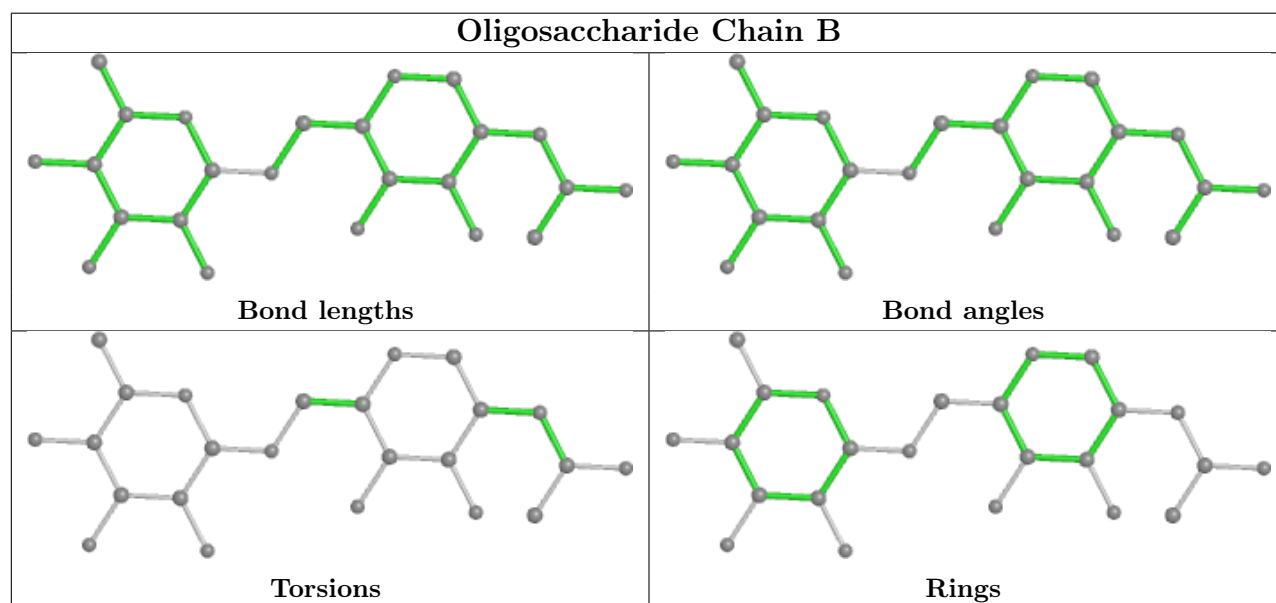
All (3) torsion outliers are listed below:

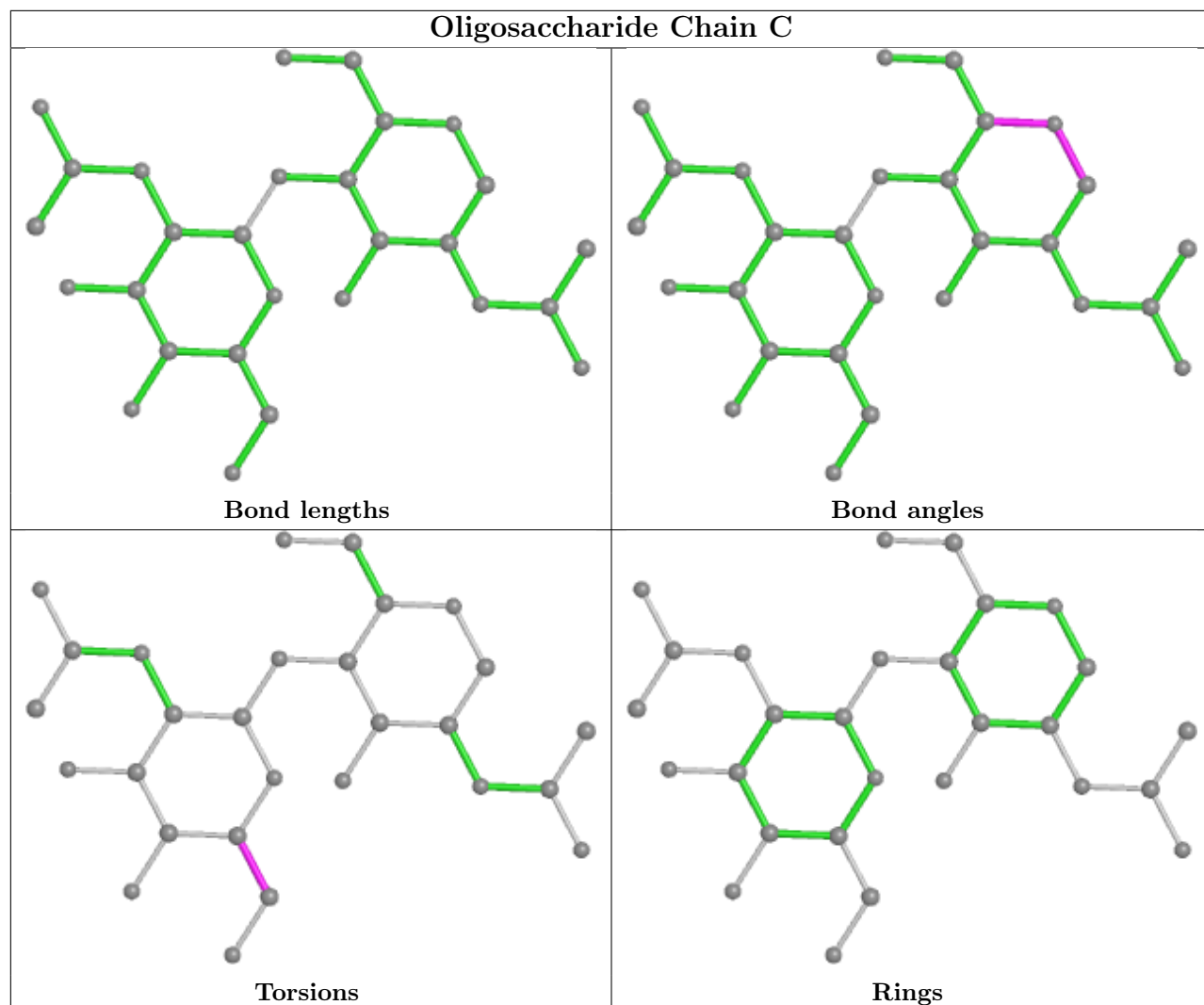
Mol	Chain	Res	Type	Atoms
3	C	2	NAG	O5-C5-C6-O6
3	C	2	NAG	C4-C5-C6-O6
4	D	1	NAG	C3-C2-N2-C7

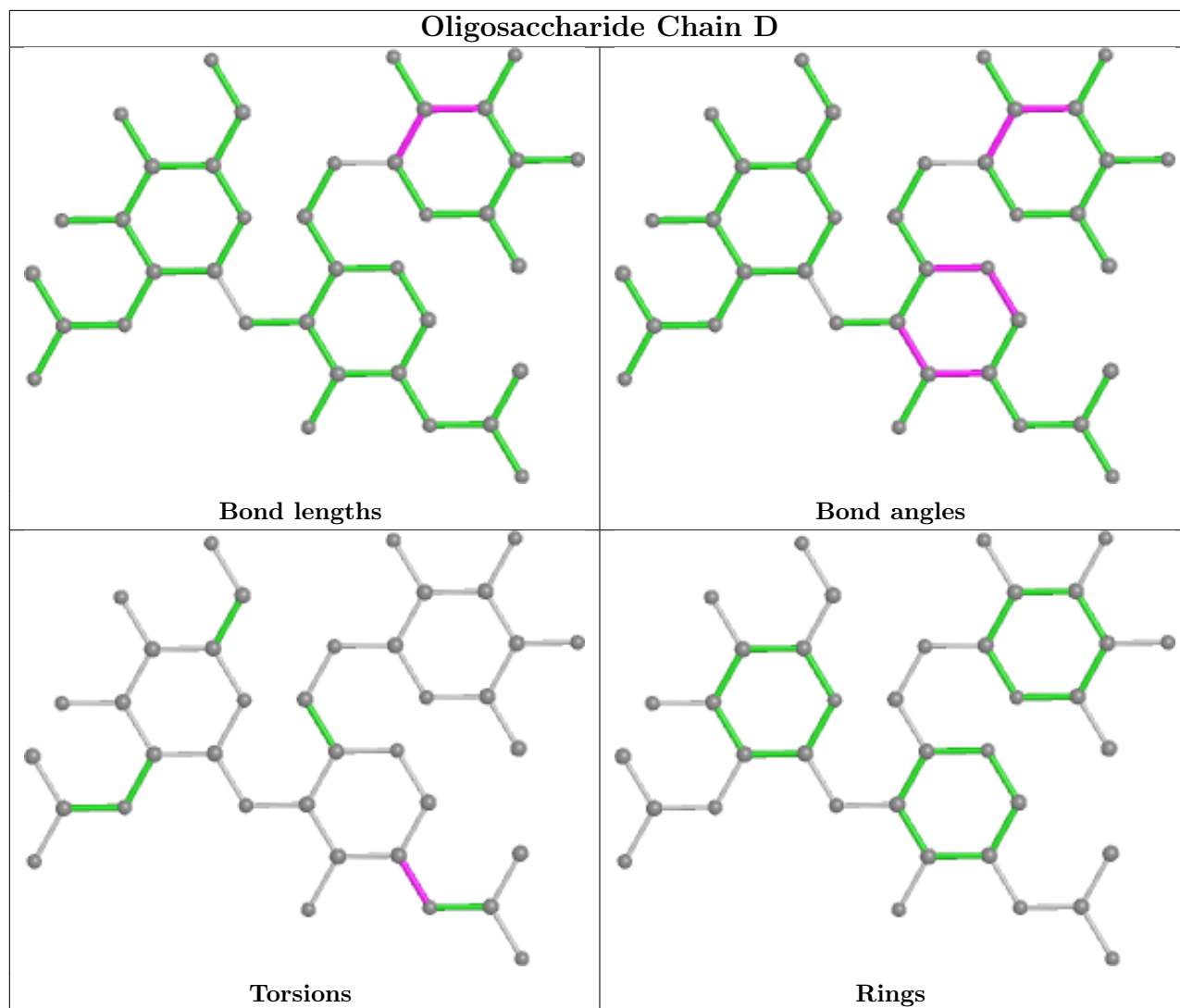
There are no ring outliers.

No monomer is involved in short contacts.

The following is a two-dimensional graphical depiction of Mogul quality analysis of bond lengths, bond angles, torsion angles, and ring geometry for oligosaccharide.







5.6 Ligand geometry [i](#)

Of 8 ligands modelled in this entry, 1 is monoatomic - leaving 7 for Mogul analysis.

In the following table, the Counts columns list the number of bonds (or angles) for which Mogul statistics could be retrieved, the number of bonds (or angles) that are observed in the model and the number of bonds (or angles) that are defined in the Chemical Component Dictionary. The Link column lists molecule types, if any, to which the group is linked. The Z score for a bond length (or angle) is the number of standard deviations the observed value is removed from the expected value. A bond length (or angle) with $|Z| > 2$ is considered an outlier worth inspection. RMSZ is the root-mean-square of all Z scores of the bond lengths (or angles).

Mol	Type	Chain	Res	Link	Bond lengths			Bond angles		
					Counts	RMSZ	# $ Z > 2$	Counts	RMSZ	# $ Z > 2$
7	EDO	A	915	-	3,3,3	0.51	0	2,2,2	0.29	0
7	EDO	A	912	-	3,3,3	0.40	0	2,2,2	0.42	0
6	NAG	A	910	1	14,14,15	0.73	1 (7%)	17,19,21	0.64	0

Mol	Type	Chain	Res	Link	Bond lengths			Bond angles		
					Counts	RMSZ	# Z > 2	Counts	RMSZ	# Z > 2
6	NAG	A	911	1	14,14,15	0.24	0	17,19,21	0.47	0
6	NAG	A	902	1	14,14,15	0.39	0	17,19,21	0.60	0
7	EDO	A	914	-	3,3,3	0.44	0	2,2,2	0.34	0
7	EDO	A	913	-	3,3,3	0.38	0	2,2,2	0.45	0

In the following table, the Chirals column lists the number of chiral outliers, the number of chiral centers analysed, the number of these observed in the model and the number defined in the Chemical Component Dictionary. Similar counts are reported in the Torsion and Rings columns. '-' means no outliers of that kind were identified.

Mol	Type	Chain	Res	Link	Chirals	Torsions	Rings
7	EDO	A	915	-	-	1/1/1/1	-
7	EDO	A	912	-	-	0/1/1/1	-
6	NAG	A	910	1	-	2/6/23/26	0/1/1/1
6	NAG	A	911	1	-	2/6/23/26	0/1/1/1
6	NAG	A	902	1	-	2/6/23/26	0/1/1/1
7	EDO	A	914	-	-	1/1/1/1	-
7	EDO	A	913	-	-	0/1/1/1	-

All (1) bond length outliers are listed below:

Mol	Chain	Res	Type	Atoms	Z	Observed(Å)	Ideal(Å)
6	A	910	NAG	C1-C2	2.42	1.56	1.52

There are no bond angle outliers.

There are no chirality outliers.

All (8) torsion outliers are listed below:

Mol	Chain	Res	Type	Atoms
6	A	911	NAG	O5-C5-C6-O6
6	A	911	NAG	C4-C5-C6-O6
6	A	910	NAG	C4-C5-C6-O6
6	A	902	NAG	O5-C5-C6-O6
6	A	902	NAG	C4-C5-C6-O6
6	A	910	NAG	O5-C5-C6-O6
7	A	914	EDO	O1-C1-C2-O2
7	A	915	EDO	O1-C1-C2-O2

There are no ring outliers.

No monomer is involved in short contacts.

5.7 Other polymers [i](#)

There are no such residues in this entry.

5.8 Polymer linkage issues [i](#)

There are no chain breaks in this entry.

6 Fit of model and data

6.1 Protein, DNA and RNA chains

In the following table, the column labelled ‘#RSRZ> 2’ contains the number (and percentage) of RSRZ outliers, followed by percent RSRZ outliers for the chain as percentile scores relative to all X-ray entries and entries of similar resolution. The OWAB column contains the minimum, median, 95th percentile and maximum values of the occupancy-weighted average B-factor per residue. The column labelled ‘Q< 0.9’ lists the number of (and percentage) of residues with an average occupancy less than 0.9.

Mol	Chain	Analysed	<RSRZ>	#RSRZ>2	OWAB(Å ²)	Q<0.9
1	A	862/868 (99%)	0.48	87 (10%) 7 9	10, 35, 79, 119	0

All (87) RSRZ outliers are listed below:

Mol	Chain	Res	Type	RSRZ
1	A	762	ARG	6.8
1	A	800	LEU	5.6
1	A	754	VAL	5.2
1	A	608	GLY	4.7
1	A	227	ALA	4.5
1	A	729	LYS	4.5
1	A	758	LEU	4.4
1	A	764	CYS	4.2
1	A	609	THR	4.1
1	A	757	LEU	4.0
1	A	18	HIS	4.0
1	A	738	SER	4.0
1	A	847	ILE	4.0
1	A	734	LEU	3.9
1	A	763	GLY	3.9
1	A	472	ARG	3.8
1	A	657	TRP	3.8
1	A	731	LEU	3.7
1	A	722	LEU	3.7
1	A	769	CYS	3.6
1	A	283	LYS	3.5
1	A	849	LYS	3.4
1	A	753	PRO	3.3
1	A	814	VAL	3.3
1	A	796	ALA	3.3
1	A	813	ASN	3.3
1	A	759	LYS	3.3

Continued on next page...

Continued from previous page...

Mol	Chain	Res	Type	RSRZ
1	A	765	THR	3.3
1	A	739	ILE	3.3
1	A	747	VAL	3.2
1	A	740	VAL	3.1
1	A	797	LYS	3.0
1	A	656	TYR	3.0
1	A	879	TYR	2.9
1	A	779	LYS	2.9
1	A	281	ILE	2.9
1	A	732	CYS	2.9
1	A	819	LEU	2.9
1	A	229	GLN	2.9
1	A	725	TRP	2.9
1	A	851	LEU	2.8
1	A	644	ILE	2.8
1	A	655	LEU	2.7
1	A	531	ILE	2.7
1	A	357	TRP	2.7
1	A	728	PRO	2.7
1	A	390	TRP	2.6
1	A	755	SER	2.6
1	A	259	LYS	2.6
1	A	761	CYS	2.6
1	A	752	MET	2.5
1	A	258	LEU	2.5
1	A	355	SER	2.5
1	A	750	PHE	2.4
1	A	790	LEU	2.4
1	A	799	LEU	2.4
1	A	354	GLY	2.4
1	A	760	ARG	2.4
1	A	766	ARG	2.4
1	A	607	GLN	2.4
1	A	192	TRP	2.4
1	A	848	ARG	2.3
1	A	726	SER	2.3
1	A	712	LYS	2.3
1	A	668	TRP	2.3
1	A	225	ASP	2.3
1	A	670	SER	2.3
1	A	699	GLU	2.3
1	A	778	ASP	2.2

Continued on next page...

Continued from previous page...

Mol	Chain	Res	Type	RSRZ
1	A	226	ASN	2.2
1	A	816	VAL	2.2
1	A	701	VAL	2.2
1	A	715	HIS	2.2
1	A	669	ALA	2.2
1	A	868	GLN	2.2
1	A	356	ASN	2.2
1	A	532	HIS	2.2
1	A	90	LEU	2.1
1	A	659	LEU	2.1
1	A	654	ALA	2.1
1	A	777	THR	2.1
1	A	230	ALA	2.1
1	A	282	ARG	2.1
1	A	190	TRP	2.1
1	A	412	TRP	2.0
1	A	864	SER	2.0
1	A	780	GLU	2.0

6.2 Non-standard residues in protein, DNA, RNA chains [i](#)

There are no non-standard protein/DNA/RNA residues in this entry.

6.3 Carbohydrates [i](#)

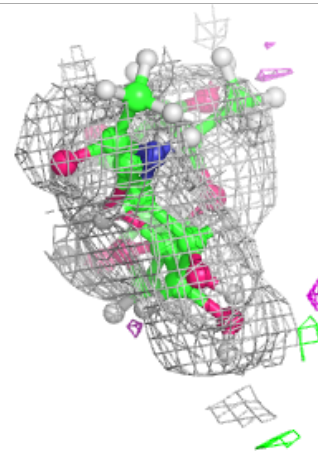
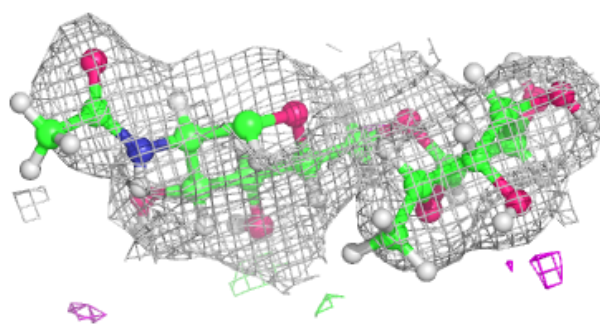
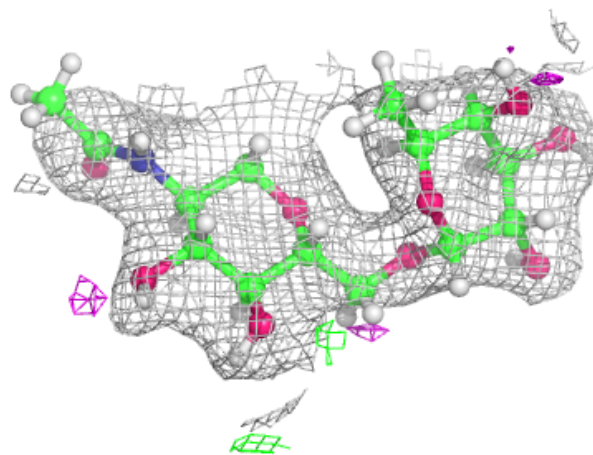
In the following table, the Atoms column lists the number of modelled atoms in the group and the number defined in the chemical component dictionary. The B-factors column lists the minimum, median, 95th percentile and maximum values of B factors of atoms in the group. The column labelled 'Q< 0.9' lists the number of atoms with occupancy less than 0.9.

Mol	Type	Chain	Res	Atoms	RSCC	RSR	B-factors(Å ²)	Q<0.9
4	NAG	D	2	14/15	0.71	0.28	77,91,106,110	0
3	NAG	C	2	14/15	0.77	0.26	71,80,96,97	0
4	FUC	D	3	10/11	0.81	0.41	83,93,112,112	0
4	NAG	D	1	14/15	0.85	0.18	43,69,83,85	0
3	NAG	C	1	14/15	0.91	0.24	50,68,82,85	0
2	FUC	B	2	10/11	0.92	0.20	47,52,60,62	0
2	NAG	B	1	14/15	0.93	0.17	39,54,67,67	0

The following is a graphical depiction of the model fit to experimental electron density for oligosaccharide. Each fit is shown from different orientation to approximate a three-dimensional view.

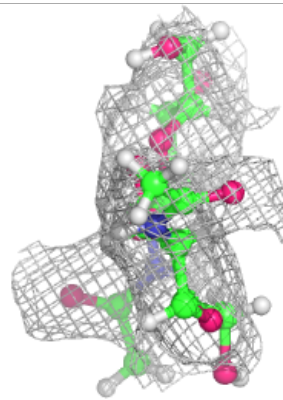
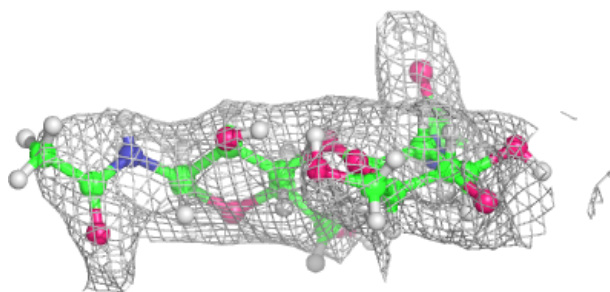
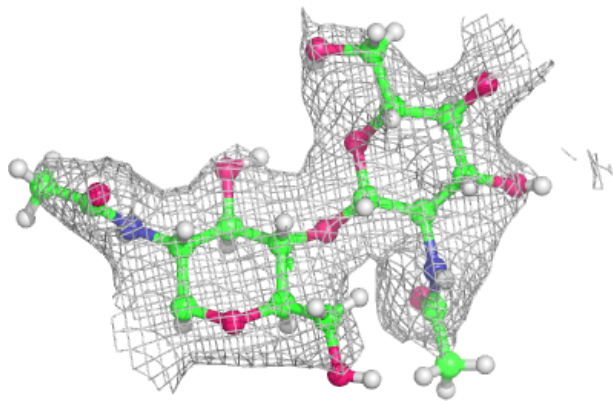
Electron density around Chain B:

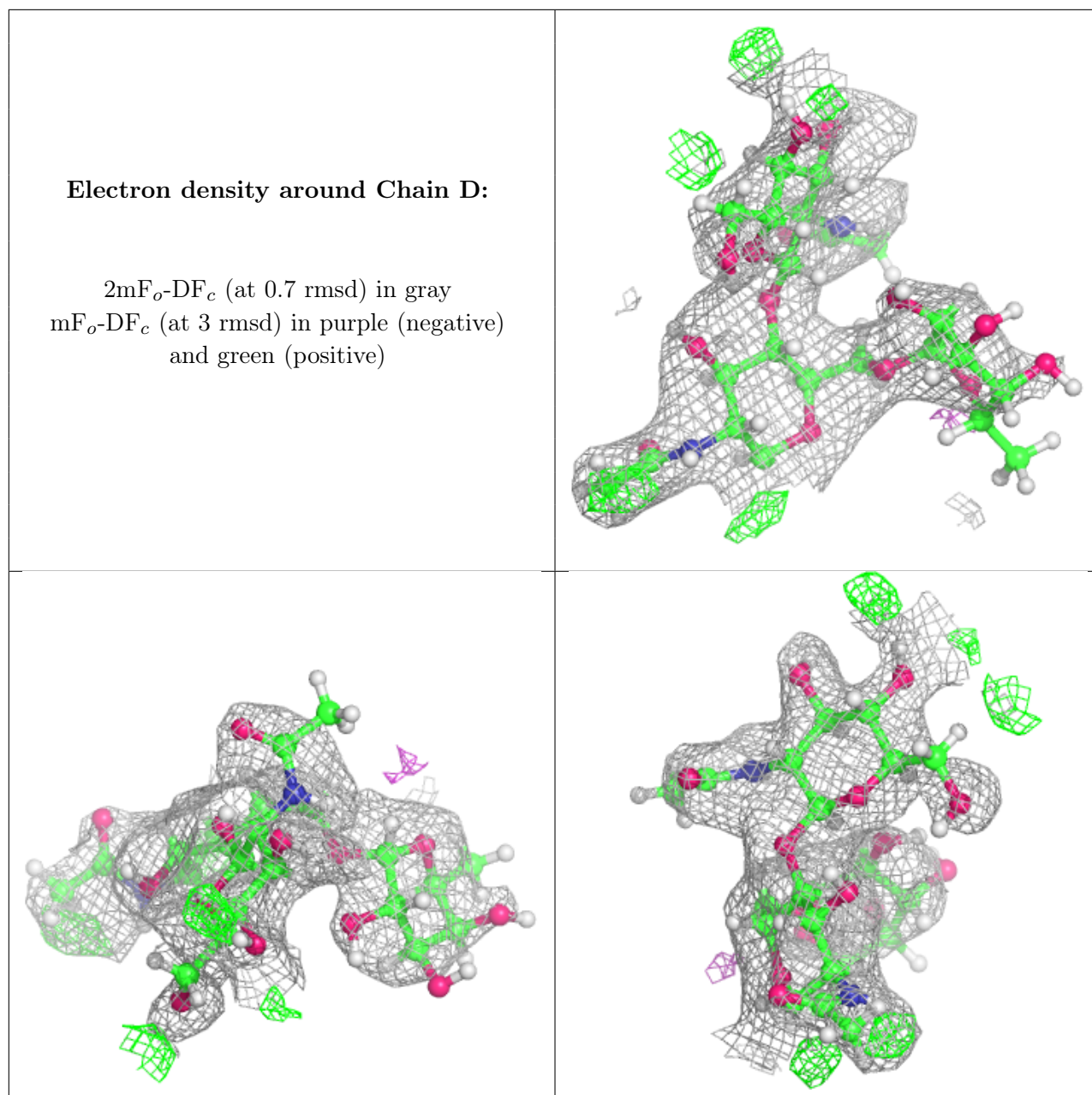
$2mF_o-DF_c$ (at 0.7 rmsd) in gray
 mF_o-DF_c (at 3 rmsd) in purple (negative)
and green (positive)



Electron density around Chain C:

$2mF_o-DF_c$ (at 0.7 rmsd) in gray
 mF_o-DF_c (at 3 rmsd) in purple (negative)
and green (positive)





6.4 Ligands [i](#)

In the following table, the Atoms column lists the number of modelled atoms in the group and the number defined in the chemical component dictionary. The B-factors column lists the minimum, median, 95th percentile and maximum values of B factors of atoms in the group. The column labelled 'Q< 0.9' lists the number of atoms with occupancy less than 0.9.

Mol	Type	Chain	Res	Atoms	RSCC	RSR	B-factors(Å ²)	Q<0.9
6	NAG	A	911	14/15	0.79	0.33	53,75,96,99	0
6	NAG	A	910	14/15	0.84	0.29	55,76,94,96	0
6	NAG	A	902	14/15	0.86	0.19	41,54,71,73	0

Continued on next page...

Continued from previous page...

Mol	Type	Chain	Res	Atoms	RSCC	RSR	B-factors(\AA^2)	Q<0.9
7	EDO	A	914	4/4	0.92	0.15	34,43,48,54	0
7	EDO	A	915	4/4	0.93	0.32	28,34,38,40	0
7	EDO	A	912	4/4	0.95	0.20	22,27,30,32	0
7	EDO	A	913	4/4	0.96	0.23	22,29,32,34	0
5	CA	A	901	1/1	0.99	0.10	30,30,30,30	0

6.5 Other polymers [i](#)

There are no such residues in this entry.