



# Full wwPDB X-ray Structure Validation Report ⓘ

Dec 15, 2024 – 01:20 PM EST

PDB ID : 6D7X  
Title : Crystal Structure of Rat TRPV6\*-Y466A- in complex with brominated 2-Aminoethoxydiphenyl borate (2-APB-Br)  
Authors : Singh, A.K.; Saotome, K.; McGoldrick, L.L.; Sobolevsky, A.I.  
Deposited on : 2018-04-25  
Resolution : 3.60 Å (reported)

This is a Full wwPDB X-ray Structure Validation Report for a publicly released PDB entry.

We welcome your comments at [validation@mail.wwpdb.org](mailto:validation@mail.wwpdb.org)

A user guide is available at

<https://www.wwpdb.org/validation/2017/XrayValidationReportHelp>

with specific help available everywhere you see the ⓘ symbol.

The types of validation reports are described at

<http://www.wwpdb.org/validation/2017/FAQs#types>.

---

The following versions of software and data (see [references ⓘ](#)) were used in the production of this report:

MolProbity : 4.02b-467  
Mogul : 2022.3.0, CSD as543be (2022)  
Xtriage (Phenix) : 1.21  
EDS : 3.0  
buster-report : 1.1.7 (2018)  
Percentile statistics : 20231227.v01 (using entries in the PDB archive December 27th 2023)  
CCP4 : 9.0.004 (Gargrove)  
Density-Fitness : 1.0.11  
Ideal geometry (proteins) : Engh & Huber (2001)  
Ideal geometry (DNA, RNA) : Parkinson et al. (1996)  
Validation Pipeline (wwPDB-VP) : 2.40

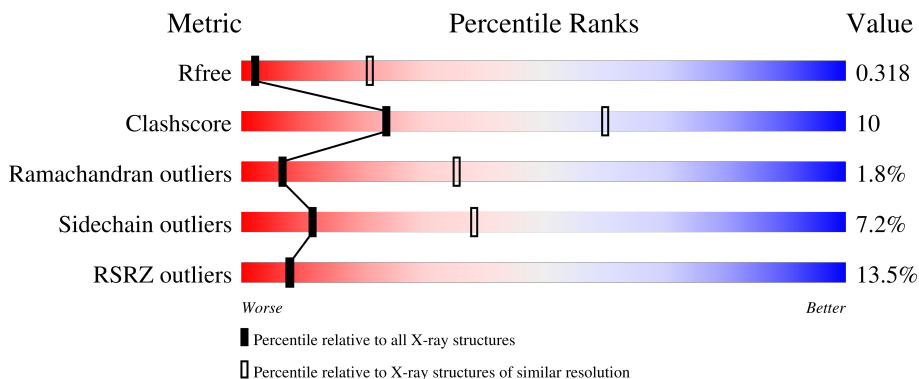
# 1 Overall quality at a glance

The following experimental techniques were used to determine the structure:

*X-RAY DIFFRACTION*

The reported resolution of this entry is 3.60 Å.

Percentile scores (ranging between 0-100) for global validation metrics of the entry are shown in the following graphic. The table shows the number of entries on which the scores are based.



Metric	Whole archive (#Entries)	Similar resolution (#Entries, resolution range(Å))
$R_{free}$	164625	1563 (3.70-3.50)
Clashscore	180529	1665 (3.70-3.50)
Ramachandran outliers	177936	1641 (3.70-3.50)
Sidechain outliers	177891	1640 (3.70-3.50)
RSRZ outliers	164620	1562 (3.70-3.50)

The table below summarises the geometric issues observed across the polymeric chains and their fit to the electron density. The red, orange, yellow and green segments of the lower bar indicate the fraction of residues that contain outliers for  $\geq 3$ , 2, 1 and 0 types of geometric quality criteria respectively. A grey segment represents the fraction of residues that are not modelled. The numeric value for each fraction is indicated below the corresponding segment, with a dot representing fractions  $\leq 5\%$ . The upper red bar (where present) indicates the fraction of residues that have poor fit to the electron density. The numeric value is given above the bar.

Mol	Chain	Length	Quality of chain
1	A	672	

The following table lists non-polymeric compounds, carbohydrate monomers and non-standard residues in protein, DNA, RNA chains that are outliers for geometric or electron-density-fit criteria:

Mol	Type	Chain	Res	Chirality	Geometry	Clashes	Electron density
4	DTB	A	704	X	-	-	-

## 2 Entry composition [i](#)

There are 4 unique types of molecules in this entry. The entry contains 4807 atoms, of which 0 are hydrogens and 0 are deuteriums.

In the tables below, the ZeroOcc column contains the number of atoms modelled with zero occupancy, the AltConf column contains the number of residues with at least one atom in alternate conformation and the Trace column contains the number of residues modelled with at most 2 atoms.

- Molecule 1 is a protein called Transient receptor potential cation channel subfamily V member 6.

Mol	Chain	Residues	Atoms					ZeroOcc	AltConf	Trace
			Total	C	N	O	S			
1	A	600	4772	3087	799	852	34	0	0	0

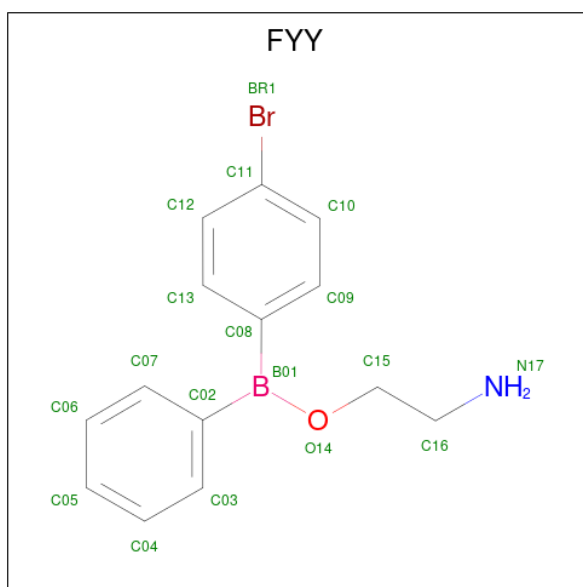
There are 7 discrepancies between the modelled and reference sequences:

Chain	Residue	Modelled	Actual	Comment	Reference
A	62	TYR	ILE	conflict	UNP Q9R186
A	92	ASN	LEU	conflict	UNP Q9R186
A	96	GLN	MET	conflict	UNP Q9R186
A	466	ALA	TYR	engineered mutation	UNP Q9R186
A	670	VAL	-	expression tag	UNP Q9R186
A	671	PRO	-	expression tag	UNP Q9R186
A	672	ARG	-	expression tag	UNP Q9R186

- Molecule 2 is CALCIUM ION (three-letter code: CA) (formula: Ca).

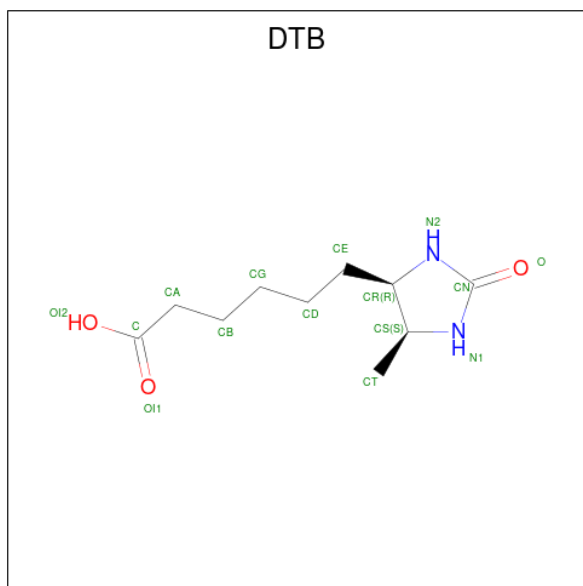
Mol	Chain	Residues	Atoms		ZeroOcc	AltConf
2	A	2	Total	Ca	0	0
			2	2		

- Molecule 3 is 2-aminoethyl (4-bromophenyl)phenylborinate (three-letter code: FYY) (formula: C<sub>14</sub>H<sub>15</sub>BBrNO).



Mol	Chain	Residues	Atoms					ZeroOcc	AltConf	
			Total	B	Br	C	N			O
3	A	1	18	1	1	14	1	1	0	0

- Molecule 4 is 6-(5-METHYL-2-OXO-IMIDAZOLIDIN-4-YL)-HEXANOIC ACID (three-letter code: DTB) (formula:  $C_{10}H_{18}N_2O_3$ ).

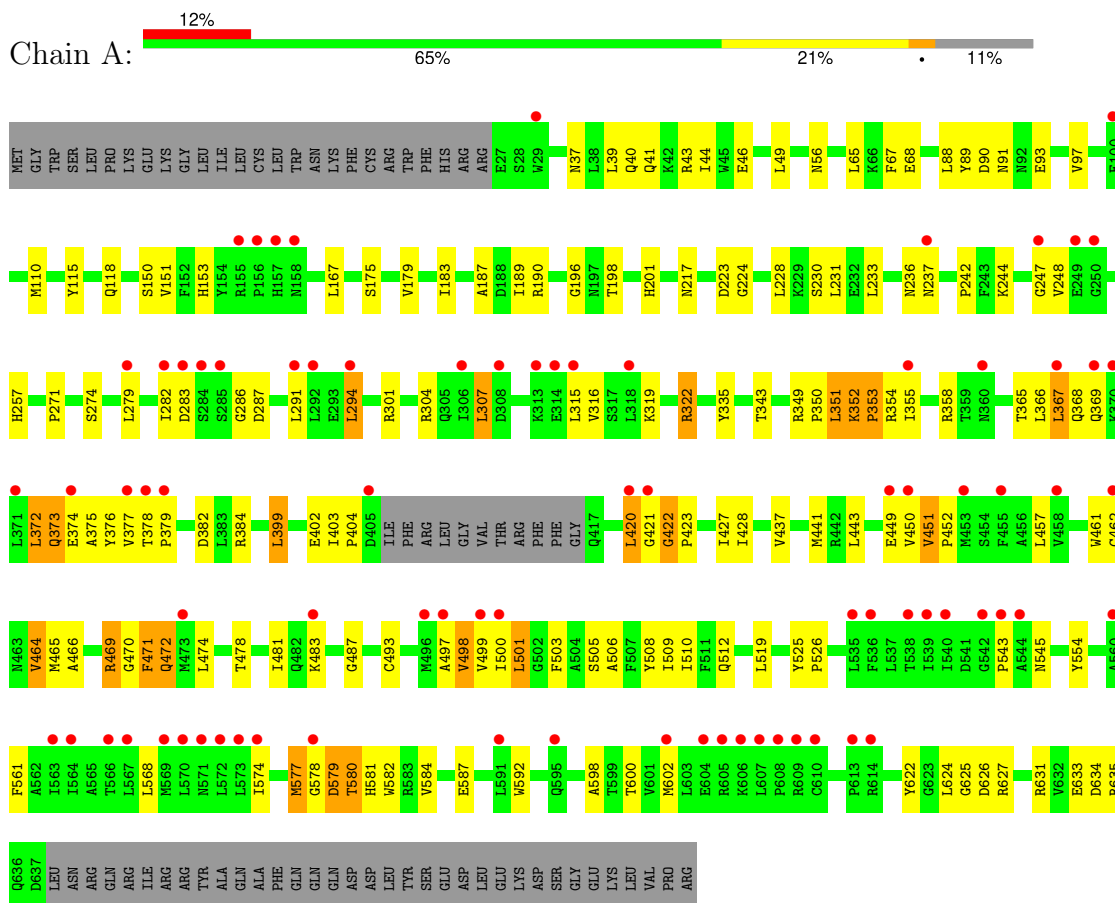


Mol	Chain	Residues	Atoms			ZeroOcc	AltConf	
			Total	C	N			O
4	A	1	15	10	2	3	0	0

### 3 Residue-property plots

These plots are drawn for all protein, RNA, DNA and oligosaccharide chains in the entry. The first graphic for a chain summarises the proportions of the various outlier classes displayed in the second graphic. The second graphic shows the sequence view annotated by issues in geometry and electron density. Residues are color-coded according to the number of geometric quality criteria for which they contain at least one outlier: green = 0, yellow = 1, orange = 2 and red = 3 or more. A red dot above a residue indicates a poor fit to the electron density ( $RSRZ > 2$ ). Stretches of 2 or more consecutive residues without any outlier are shown as a green connector. Residues present in the sample, but not in the model, are shown in grey.

- Molecule 1: Transient receptor potential cation channel subfamily V member 6



## 4 Data and refinement statistics

Property	Value	Source
Space group	P 4 21 2	Depositor
Cell constants a, b, c, $\alpha$ , $\beta$ , $\gamma$	144.35Å 144.35Å 113.37Å 90.00° 90.00° 90.00°	Depositor
Resolution (Å)	46.54 – 3.60 46.54 – 3.60	Depositor EDS
% Data completeness (in resolution range)	97.7 (46.54-3.60) 96.8 (46.54-3.60)	Depositor EDS
$R_{merge}$	(Not available)	Depositor
$R_{sym}$	(Not available)	Depositor
$\langle I/\sigma(I) \rangle$ <sup>1</sup>	2.09 (at 3.57Å)	Xtrriage
Refinement program	PHENIX (1.12_2829: ???)	Depositor
R, $R_{free}$	0.282 , 0.316 0.291 , 0.318	Depositor DCC
$R_{free}$ test set	699 reflections (5.00%)	wwPDB-VP
Wilson B-factor (Å <sup>2</sup> )	119.1	Xtrriage
Anisotropy	0.442	Xtrriage
Bulk solvent $k_{sol}$ (e/Å <sup>3</sup> ), $B_{sol}$ (Å <sup>2</sup> )	0.29 , 58.5	EDS
L-test for twinning <sup>2</sup>	$\langle  L  \rangle = 0.45$ , $\langle L^2 \rangle = 0.28$	Xtrriage
Estimated twinning fraction	No twinning to report.	Xtrriage
$F_o, F_c$ correlation	0.83	EDS
Total number of atoms	4807	wwPDB-VP
Average B, all atoms (Å <sup>2</sup> )	114.0	wwPDB-VP

Xtrriage's analysis on translational NCS is as follows: *The largest off-origin peak in the Patterson function is 3.93% of the height of the origin peak. No significant pseudotranslation is detected.*

<sup>1</sup>Intensities estimated from amplitudes.

<sup>2</sup>Theoretical values of  $\langle |L| \rangle$ ,  $\langle L^2 \rangle$  for acentric reflections are 0.5, 0.333 respectively for untwinned datasets, and 0.375, 0.2 for perfectly twinned datasets.

## 5 Model quality [i](#)

### 5.1 Standard geometry [i](#)

Bond lengths and bond angles in the following residue types are not validated in this section: DTB, CA, FYY

The Z score for a bond length (or angle) is the number of standard deviations the observed value is removed from the expected value. A bond length (or angle) with  $|Z| > 5$  is considered an outlier worth inspection. RMSZ is the root-mean-square of all Z scores of the bond lengths (or angles).

Mol	Chain	Bond lengths		Bond angles	
		RMSZ	# Z  >5	RMSZ	# Z  >5
1	A	0.26	0/4880	0.45	2/6630 (0.0%)

There are no bond length outliers.

All (2) bond angle outliers are listed below:

Mol	Chain	Res	Type	Atoms	Z	Observed(°)	Ideal(°)
1	A	404	PRO	N-CA-CB	6.20	110.74	103.30
1	A	579	ASP	N-CA-C	-5.45	96.29	111.00

There are no chirality outliers.

There are no planarity outliers.

### 5.2 Too-close contacts [i](#)

In the following table, the Non-H and H(model) columns list the number of non-hydrogen atoms and hydrogen atoms in the chain respectively. The H(added) column lists the number of hydrogen atoms added and optimized by MolProbity. The Clashes column lists the number of clashes within the asymmetric unit, whereas Symm-Clashes lists symmetry-related clashes.

Mol	Chain	Non-H	H(model)	H(added)	Clashes	Symm-Clashes
1	A	4772	0	4794	94	0
2	A	2	0	0	0	0
3	A	18	0	0	3	0
4	A	15	0	13	1	0
All	All	4807	0	4807	95	0

The all-atom clashscore is defined as the number of clashes found per 1000 atoms (including hydrogen atoms). The all-atom clashscore for this structure is 10.

All (95) close contacts within the same asymmetric unit are listed below, sorted by their clash magnitude.

Atom-1	Atom-2	Interatomic distance (Å)	Clash overlap (Å)
1:A:577:MET:SD	1:A:577:MET:N	2.59	0.75
1:A:420:LEU:O	1:A:422:GLY:N	2.22	0.72
1:A:354:ARG:HD3	1:A:358:ARG:HB3	1.73	0.71
1:A:493:CYS:O	1:A:497:ALA:N	2.24	0.70
1:A:580:THR:N	1:A:584:VAL:HG21	2.07	0.69
1:A:578:GLY:H	1:A:580:THR:HG22	1.57	0.69
1:A:230:SER:HB3	1:A:233:LEU:HD23	1.77	0.67
1:A:343:THR:HG21	1:A:461:TRP:HE1	1.60	0.66
1:A:279:LEU:HD22	1:A:283:ASP:HB2	1.83	0.60
1:A:196:GLY:HA3	1:A:237:ASN:HB3	1.82	0.60
1:A:351:LEU:HB2	1:A:352:LYS:HB3	1.84	0.60
1:A:115:TYR:CE2	4:A:704:DTB:HCT2	2.37	0.60
1:A:352:LYS:HD2	1:A:355:ILE:HD13	1.84	0.58
1:A:584:VAL:HA	1:A:587:GLU:HB2	1.86	0.58
1:A:335:TYR:HD2	1:A:464:VAL:HG23	1.68	0.58
1:A:354:ARG:HH12	1:A:365:THR:HG22	1.69	0.57
1:A:183:ILE:HD13	1:A:187:ALA:HB3	1.87	0.57
1:A:367:LEU:HG	1:A:369:GLN:HE21	1.69	0.56
1:A:498:VAL:O	1:A:500:ILE:N	2.37	0.56
1:A:437:VAL:O	1:A:441:MET:N	2.31	0.56
1:A:470:GLY:H	1:A:592:TRP:HE1	1.54	0.55
1:A:89:TYR:O	1:A:91:ASN:N	2.39	0.55
1:A:519:LEU:HD21	1:A:543:PRO:HB3	1.89	0.55
1:A:301:ARG:HG3	1:A:304:ARG:HH12	1.71	0.55
1:A:579:ASP:C	1:A:584:VAL:HG21	2.27	0.55
1:A:373:GLN:HA	1:A:374:GLU:HB2	1.88	0.54
1:A:349:ARG:HH22	1:A:450:VAL:HG22	1.73	0.54
1:A:498:VAL:HA	1:A:501:LEU:HD11	1.91	0.52
1:A:279:LEU:HD23	1:A:282:ILE:HB	1.92	0.51
1:A:307:LEU:H	1:A:307:LEU:HD13	1.76	0.51
1:A:498:VAL:HG12	1:A:499:VAL:H	1.75	0.51
1:A:372:LEU:HG	1:A:373:GLN:HB3	1.93	0.50
3:A:703:FYY:C15	3:A:703:FYY:C08	2.89	0.50
1:A:506:ALA:O	1:A:510:ILE:HG12	2.11	0.50
1:A:579:ASP:HA	1:A:584:VAL:HG11	1.94	0.50
1:A:519:LEU:HD13	1:A:545:ASN:HB2	1.93	0.49
1:A:43:ARG:NH1	1:A:46:GLU:OE1	2.47	0.48
1:A:271:PRO:HB2	1:A:635:ARG:HG3	1.95	0.48
1:A:274:SER:HB2	1:A:631:ARG:HH11	1.78	0.48
1:A:478:THR:O	1:A:481:ILE:HG22	2.14	0.47

*Continued on next page...*



*Continued from previous page...*

Atom-1	Atom-2	Interatomic distance (Å)	Clash overlap (Å)
1:A:150:SER:HA	1:A:153:HIS:CE1	2.50	0.47
1:A:402:GLU:OE2	3:A:703:FYY:N17	2.48	0.47
1:A:352:LYS:HE2	1:A:374:GLU:HG2	1.97	0.47
1:A:349:ARG:HH12	1:A:450:VAL:HG22	1.79	0.47
1:A:625:GLY:HA3	1:A:626:ASP:HA	1.61	0.47
1:A:223:ASP:OD1	1:A:224:GLY:N	2.49	0.46
1:A:236:ASN:OD1	1:A:237:ASN:N	2.48	0.46
1:A:217:ASN:OD1	1:A:257:HIS:NE2	2.46	0.46
1:A:378:THR:HB	1:A:382:ASP:N	2.30	0.46
1:A:634:ASP:OD1	1:A:634:ASP:N	2.48	0.45
1:A:274:SER:HA	1:A:633:GLU:HA	1.97	0.45
1:A:110:MET:HB2	1:A:115:TYR:O	2.16	0.45
1:A:167:LEU:HD21	1:A:189:ILE:HG22	1.98	0.45
1:A:399:LEU:O	1:A:403:ILE:HG12	2.17	0.45
1:A:244:LYS:HE3	1:A:244:LYS:HB2	1.79	0.44
1:A:462:CYS:O	1:A:465:MET:HG2	2.17	0.44
1:A:316:VAL:HA	1:A:319:LYS:HB2	1.99	0.44
1:A:354:ARG:HB2	1:A:368:GLN:HA	2.00	0.44
1:A:508:TYR:O	1:A:512:GLN:N	2.50	0.44
1:A:190:ARG:HD2	1:A:231:LEU:HD13	2.00	0.44
1:A:358:ARG:HH12	1:A:367:LEU:HD23	1.82	0.44
1:A:67:PHE:HA	1:A:68:GLU:HA	1.66	0.43
1:A:466:ALA:O	1:A:469:ARG:HB3	2.18	0.43
1:A:505:SER:O	1:A:509:ILE:HG12	2.19	0.43
1:A:198:THR:OG1	1:A:201:HIS:ND1	2.40	0.43
1:A:598:ALA:HB1	3:A:703:FYY:BR1	2.74	0.43
1:A:201:HIS:CE1	1:A:242:PRO:HD3	2.54	0.43
1:A:503:PHE:CD1	1:A:561:PHE:HB2	2.53	0.43
1:A:40:GLN:O	1:A:44:ILE:HG12	2.18	0.43
1:A:93:GLU:O	1:A:97:VAL:HG23	2.19	0.43
1:A:352:LYS:HB2	1:A:353:PRO:HD2	2.00	0.42
1:A:175:SER:O	1:A:179:VAL:HG23	2.19	0.42
1:A:248:VAL:HG22	1:A:294:LEU:HB3	2.00	0.42
1:A:279:LEU:HD23	1:A:279:LEU:HA	1.88	0.42
1:A:350:PRO:HG3	1:A:384:ARG:NH1	2.33	0.42
1:A:247:GLY:HA3	1:A:291:LEU:HD11	2.02	0.42
1:A:422:GLY:H	1:A:423:PRO:HD3	1.85	0.42
1:A:376:TYR:HB3	1:A:378:THR:HG23	2.01	0.42
1:A:375:ALA:HA	1:A:376:TYR:HA	1.68	0.42
1:A:451:VAL:HG13	1:A:452:PRO:HD3	2.02	0.42
1:A:110:MET:HG3	1:A:118:GLN:HB3	2.02	0.41

*Continued on next page...*

Continued from previous page...

Atom-1	Atom-2	Interatomic distance (Å)	Clash overlap (Å)
1:A:574:ILE:O	1:A:577:MET:HB2	2.20	0.41
1:A:335:TYR:CD2	1:A:464:VAL:HG23	2.50	0.41
1:A:322:ARG:HD3	1:A:322:ARG:HA	1.94	0.41
1:A:428:ILE:HD12	1:A:428:ILE:HA	1.82	0.41
1:A:525:TYR:N	1:A:526:PRO:HD2	2.35	0.41
1:A:470:GLY:N	1:A:592:TRP:HE1	2.18	0.41
1:A:422:GLY:HA2	1:A:469:ARG:NH2	2.36	0.41
1:A:510:ILE:HG21	1:A:554:TYR:HB2	2.03	0.41
1:A:470:GLY:O	1:A:472:GLN:N	2.53	0.41
1:A:37:ASN:O	1:A:41:GLN:HG2	2.22	0.40
1:A:56:ASN:HB2	1:A:91:ASN:ND2	2.36	0.40
1:A:286:GLY:HA3	1:A:287:ASP:HA	1.84	0.40
1:A:319:LYS:HB3	1:A:600:THR:HG21	2.02	0.40
1:A:372:LEU:HD12	1:A:372:LEU:HA	1.80	0.40

There are no symmetry-related clashes.

## 5.3 Torsion angles [i](#)

### 5.3.1 Protein backbone [i](#)

In the following table, the Percentiles column shows the percent Ramachandran outliers of the chain as a percentile score with respect to all X-ray entries followed by that with respect to entries of similar resolution.

The Analysed column shows the number of residues for which the backbone conformation was analysed, and the total number of residues.

Mol	Chain	Analysed	Favoured	Allowed	Outliers	Percentiles
1	A	596/672 (89%)	534 (90%)	51 (9%)	11 (2%)	<b>7</b> <b>35</b>

All (11) Ramachandran outliers are listed below:

Mol	Chain	Res	Type
1	A	90	ASP
1	A	379	PRO
1	A	421	GLY
1	A	487	GLY
1	A	581	HIS
1	A	471	PHE
1	A	580	THR

Continued on next page...

*Continued from previous page...*

Mol	Chain	Res	Type
1	A	377	VAL
1	A	353	PRO
1	A	422	GLY
1	A	498	VAL

### 5.3.2 Protein sidechains [i](#)

In the following table, the Percentiles column shows the percent sidechain outliers of the chain as a percentile score with respect to all X-ray entries followed by that with respect to entries of similar resolution.

The Analysed column shows the number of residues for which the sidechain conformation was analysed, and the total number of residues.

Mol	Chain	Analysed	Rotameric	Outliers	Percentiles
1	A	513/583 (88%)	476 (93%)	37 (7%)	12 38

All (37) residues with a non-rotameric sidechain are listed below:

Mol	Chain	Res	Type
1	A	39	LEU
1	A	49	LEU
1	A	65	LEU
1	A	88	LEU
1	A	151	VAL
1	A	228	LEU
1	A	294	LEU
1	A	307	LEU
1	A	315	LEU
1	A	322	ARG
1	A	351	LEU
1	A	352	LYS
1	A	366	LEU
1	A	367	LEU
1	A	372	LEU
1	A	373	GLN
1	A	399	LEU
1	A	420	LEU
1	A	427	ILE
1	A	443	LEU
1	A	449	GLU
1	A	451	VAL

*Continued on next page...*

*Continued from previous page...*

Mol	Chain	Res	Type
1	A	457	LEU
1	A	464	VAL
1	A	469	ARG
1	A	471	PHE
1	A	472	GLN
1	A	474	LEU
1	A	483	LYS
1	A	501	LEU
1	A	568	LEU
1	A	577	MET
1	A	582	TRP
1	A	602	MET
1	A	622	TYR
1	A	624	LEU
1	A	627	ARG

Sometimes sidechains can be flipped to improve hydrogen bonding and reduce clashes. All (2) such sidechains are listed below:

Mol	Chain	Res	Type
1	A	425	HIS
1	A	463	ASN

### 5.3.3 RNA [i](#)

There are no RNA molecules in this entry.

### 5.4 Non-standard residues in protein, DNA, RNA chains [i](#)

There are no non-standard protein/DNA/RNA residues in this entry.

### 5.5 Carbohydrates [i](#)

There are no oligosaccharides in this entry.

### 5.6 Ligand geometry [i](#)

Of 4 ligands modelled in this entry, 2 are monoatomic - leaving 2 for Mogul analysis.

In the following table, the Counts columns list the number of bonds (or angles) for which Mogul statistics could be retrieved, the number of bonds (or angles) that are observed in the model and the number of bonds (or angles) that are defined in the Chemical Component Dictionary. The Link column lists molecule types, if any, to which the group is linked. The Z score for a bond length (or angle) is the number of standard deviations the observed value is removed from the expected value. A bond length (or angle) with  $|Z| > 2$  is considered an outlier worth inspection. RMSZ is the root-mean-square of all Z scores of the bond lengths (or angles).

Mol	Type	Chain	Res	Link	Bond lengths			Bond angles		
					Counts	RMSZ	# Z  > 2	Counts	RMSZ	# Z  > 2
3	FYY	A	703	-	18,19,19	0.74	1 (5%)	20,24,24	1.39	3 (15%)
4	DTB	A	704	-	15,15,15	4.03	4 (26%)	16,19,19	2.56	6 (37%)

In the following table, the Chirals column lists the number of chiral outliers, the number of chiral centers analysed, the number of these observed in the model and the number defined in the Chemical Component Dictionary. Similar counts are reported in the Torsion and Rings columns. '-' means no outliers of that kind were identified.

Mol	Type	Chain	Res	Link	Chirals	Torsions	Rings
3	FYY	A	703	-	-	10/12/12/12	0/2/2/2
4	DTB	A	704	-	2/2/4/6	6/8/20/20	0/1/1/1

All (5) bond length outliers are listed below:

Mol	Chain	Res	Type	Atoms	Z	Observed(Å)	Ideal(Å)
4	A	704	DTB	CR-N2	-9.15	1.32	1.46
4	A	704	DTB	O-CN	8.78	1.42	1.23
4	A	704	DTB	CS-N1	-6.99	1.33	1.46
4	A	704	DTB	CS-CR	-4.76	1.40	1.52
3	A	703	FYY	BR1-C11	2.00	1.94	1.90

All (9) bond angle outliers are listed below:

Mol	Chain	Res	Type	Atoms	Z	Observed(°)	Ideal(°)
4	A	704	DTB	CT-CS-N1	7.02	126.71	111.86
4	A	704	DTB	CR-CS-N1	3.88	107.32	102.46
4	A	704	DTB	CS-CR-N2	3.44	106.57	102.19
4	A	704	DTB	CS-N1-CN	-3.19	108.13	112.39
3	A	703	FYY	C07-C02-C03	2.95	120.24	116.86
3	A	703	FYY	C13-C08-C09	2.89	120.18	116.86
3	A	703	FYY	C12-C13-C08	-2.48	119.41	121.82
4	A	704	DTB	CR-N2-CN	-2.33	108.96	112.38
4	A	704	DTB	CD-CE-CR	-2.10	109.95	113.94

All (2) chirality outliers are listed below:

Mol	Chain	Res	Type	Atom
4	A	704	DTB	CR
4	A	704	DTB	CS

All (16) torsion outliers are listed below:

Mol	Chain	Res	Type	Atoms
3	A	703	FYY	O14-B01-C02-C03
3	A	703	FYY	O14-B01-C02-C07
3	A	703	FYY	O14-B01-C08-C09
3	A	703	FYY	O14-B01-C08-C13
3	A	703	FYY	C02-B01-O14-C15
3	A	703	FYY	O14-C15-C16-N17
4	A	704	DTB	CD-CE-CR-N2
4	A	704	DTB	CE-CD-CG-CB
4	A	704	DTB	CA-CB-CG-CD
4	A	704	DTB	C-CA-CB-CG
3	A	703	FYY	C02-B01-C08-C09
3	A	703	FYY	C02-B01-C08-C13
4	A	704	DTB	OI2-C-CA-CB
4	A	704	DTB	OI1-C-CA-CB
3	A	703	FYY	C08-B01-C02-C03
3	A	703	FYY	C08-B01-C02-C07

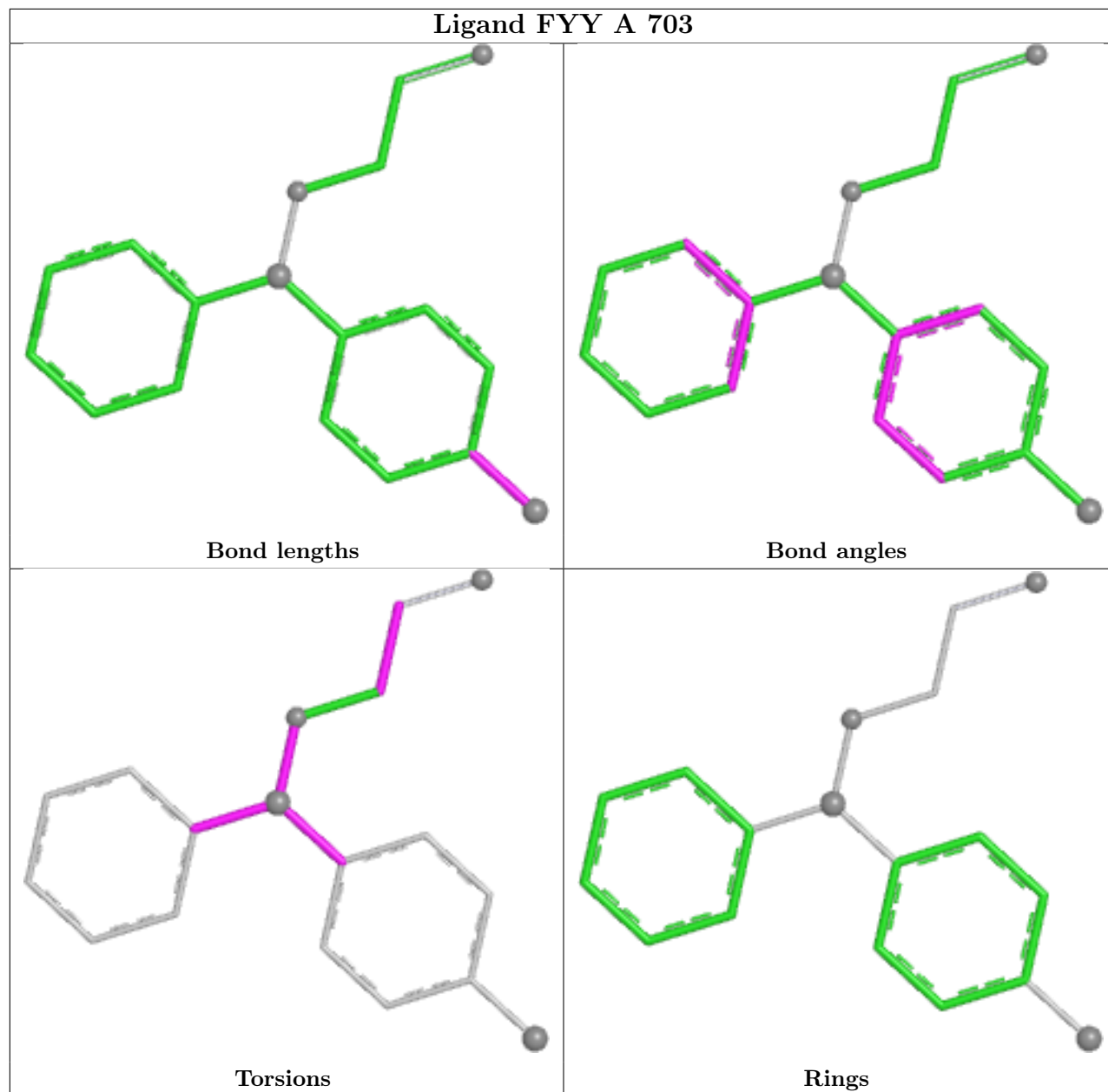
There are no ring outliers.

2 monomers are involved in 4 short contacts:

Mol	Chain	Res	Type	Clashes	Symm-Clashes
3	A	703	FYY	3	0
4	A	704	DTB	1	0

The following is a two-dimensional graphical depiction of Mogul quality analysis of bond lengths, bond angles, torsion angles, and ring geometry for all instances of the Ligand of Interest. In addition, ligands with molecular weight > 250 and outliers as shown on the validation Tables will also be included. For torsion angles, if less than 5% of the Mogul distribution of torsion angles is within 10 degrees of the torsion angle in question, then that torsion angle is considered an outlier. Any bond that is central to one or more torsion angles identified as an outlier by Mogul will be highlighted in the graph. For rings, the root-mean-square deviation (RMSD) between the ring in question and similar rings identified by Mogul is calculated over all ring torsion angles. If the average RMSD is greater than 60 degrees and the minimal RMSD between the ring in question and any Mogul-identified rings is also greater than 60 degrees, then that ring is considered an outlier. The outliers are highlighted in purple. The color gray indicates Mogul did not find sufficient

equivalents in the CSD to analyse the geometry.



## 5.7 Other polymers [i](#)

There are no such residues in this entry.

## 5.8 Polymer linkage issues [i](#)

There are no chain breaks in this entry.

## 6 Fit of model and data

### 6.1 Protein, DNA and RNA chains

In the following table, the column labelled ‘#RSRZ> 2’ contains the number (and percentage) of RSRZ outliers, followed by percent RSRZ outliers for the chain as percentile scores relative to all X-ray entries and entries of similar resolution. The OWAB column contains the minimum, median, 95<sup>th</sup> percentile and maximum values of the occupancy-weighted average B-factor per residue. The column labelled ‘Q< 0.9’ lists the number of (and percentage) of residues with an average occupancy less than 0.9.

Mol	Chain	Analysed	<RSRZ>	#RSRZ>2	OWAB(Å <sup>2</sup> )	Q<0.9
1	A	600/672 (89%)	0.56	81 (13%) <b>8</b>   <b>8</b>	30, 109, 160, 197	0

All (81) RSRZ outliers are listed below:

Mol	Chain	Res	Type	RSRZ
1	A	355	ILE	6.5
1	A	283	ASP	5.8
1	A	284	SER	5.1
1	A	573	LEU	5.1
1	A	540	ILE	5.0
1	A	566	THR	4.8
1	A	29	TRP	4.7
1	A	569	MET	4.6
1	A	462	CYS	4.5
1	A	570	LEU	4.4
1	A	420	LEU	4.4
1	A	608	PRO	4.3
1	A	499	VAL	4.2
1	A	610	CYS	4.1
1	A	155	ARG	3.9
1	A	156	PRO	3.6
1	A	497	ALA	3.5
1	A	602	MET	3.2
1	A	543	PRO	3.1
1	A	542	GLY	3.1
1	A	318	LEU	3.1
1	A	360	ASN	3.1
1	A	563	ILE	3.1
1	A	237	ASN	3.1
1	A	157	HIS	3.0
1	A	539	ILE	3.0
1	A	279	LEU	2.9

*Continued on next page...*



*Continued from previous page...*

<b>Mol</b>	<b>Chain</b>	<b>Res</b>	<b>Type</b>	<b>RSRZ</b>
1	A	607	LEU	2.9
1	A	285	SER	2.9
1	A	247	GLY	2.9
1	A	473	MET	2.8
1	A	606	LYS	2.8
1	A	544	ALA	2.8
1	A	421	GLY	2.8
1	A	572	LEU	2.8
1	A	591	LEU	2.7
1	A	308	ASP	2.7
1	A	369	GLN	2.7
1	A	538	THR	2.7
1	A	614	ARG	2.7
1	A	560	ALA	2.7
1	A	377	VAL	2.6
1	A	595	GLN	2.6
1	A	100	GLU	2.6
1	A	370	LYS	2.6
1	A	578	GLY	2.6
1	A	449	GLU	2.6
1	A	604	GLU	2.6
1	A	450	VAL	2.6
1	A	483	LYS	2.6
1	A	605	ARG	2.6
1	A	613	PRO	2.5
1	A	294	LEU	2.5
1	A	405	ASP	2.5
1	A	282	ILE	2.5
1	A	574	ILE	2.5
1	A	536	PHE	2.4
1	A	496	MET	2.4
1	A	292	LEU	2.4
1	A	371	LEU	2.4
1	A	567	LEU	2.4
1	A	500	ILE	2.2
1	A	378	THR	2.2
1	A	564	ILE	2.2
1	A	458	VAL	2.2
1	A	453	MET	2.2
1	A	249	GLU	2.2
1	A	455	PHE	2.2
1	A	291	LEU	2.2

*Continued on next page...*

*Continued from previous page...*

Mol	Chain	Res	Type	RSRZ
1	A	379	PRO	2.2
1	A	374	GLU	2.1
1	A	313	LYS	2.1
1	A	250	GLY	2.1
1	A	306	ILE	2.1
1	A	609	ARG	2.0
1	A	158	ASN	2.0
1	A	571	ASN	2.0
1	A	315	LEU	2.0
1	A	367	LEU	2.0
1	A	314	GLU	2.0
1	A	535	LEU	2.0

## 6.2 Non-standard residues in protein, DNA, RNA chains [i](#)

There are no non-standard protein/DNA/RNA residues in this entry.

## 6.3 Carbohydrates [i](#)

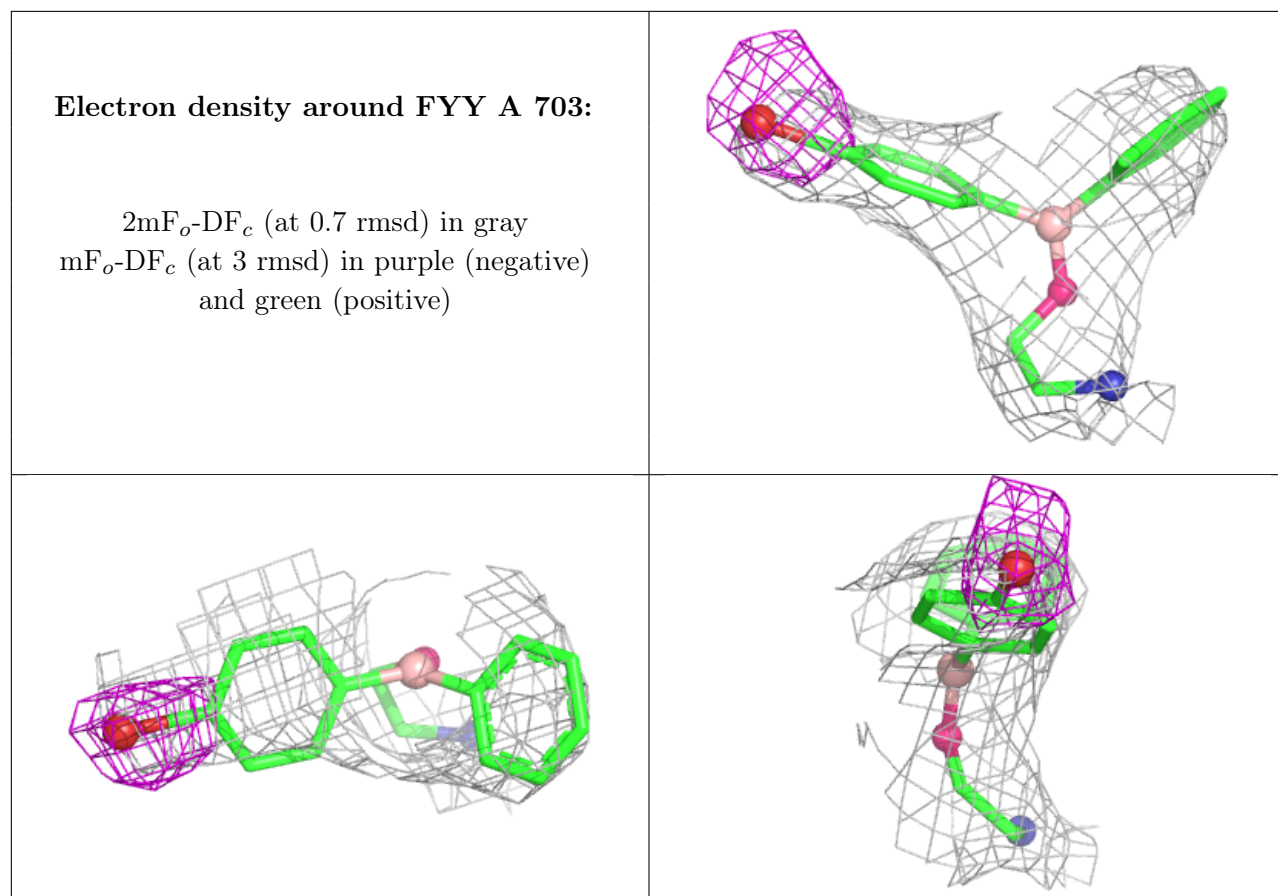
There are no monosaccharides in this entry.

## 6.4 Ligands [i](#)

In the following table, the Atoms column lists the number of modelled atoms in the group and the number defined in the chemical component dictionary. The B-factors column lists the minimum, median, 95<sup>th</sup> percentile and maximum values of B factors of atoms in the group. The column labelled 'Q< 0.9' lists the number of atoms with occupancy less than 0.9.

Mol	Type	Chain	Res	Atoms	RSCC	RSR	B-factors(Å <sup>2</sup> )	Q<0.9
2	CA	A	702	1/1	0.59	0.32	135,135,135,135	1
3	FYY	A	703	18/18	0.66	0.19	107,112,117,117	0
4	DTB	A	704	15/15	0.81	0.23	30,30,30,30	0
2	CA	A	701	1/1	0.95	0.22	134,134,134,134	1

The following is a graphical depiction of the model fit to experimental electron density of all instances of the Ligand of Interest. In addition, ligands with molecular weight > 250 and outliers as shown on the geometry validation Tables will also be included. Each fit is shown from different orientation to approximate a three-dimensional view.



## 6.5 Other polymers [i](#)

There are no such residues in this entry.