



# Full wwPDB X-ray Structure Validation Report ⓘ

Sep 26, 2023 – 01:48 PM EDT

PDB ID : 6CFM  
Title : Crystal Structure of the Human vaccinia-related kinase bound to a propynyl-pteridinone inhibitor  
Authors : Counago, R.M.; dos Reis, C.V.; de Souza, G.P.; Azevedo, A.; Guimaraes, C.; Mascarello, A.; Gama, F.; Ferreira, M.; Massirer, K.B.; Arruda, P.; Edwards, A.M.; Elkins, J.M.; Structural Genomics Consortium (SGC)  
Deposited on : 2018-02-15  
Resolution : 2.45 Å(reported)

This is a Full wwPDB X-ray Structure Validation Report for a publicly released PDB entry.

We welcome your comments at [validation@mail.wwpdb.org](mailto:validation@mail.wwpdb.org)

A user guide is available at

<https://www.wwpdb.org/validation/2017/XrayValidationReportHelp>

with specific help available everywhere you see the ⓘ symbol.

The types of validation reports are described at

<http://www.wwpdb.org/validation/2017/FAQs#types>.

---

The following versions of software and data (see [references](#) ①) were used in the production of this report:

MolProbity : 4.02b-467  
Mogul : 1.8.5 (274361), CSD as541be (2020)  
Xtrriage (Phenix) : 1.13  
EDS : 2.35.1  
buster-report : 1.1.7 (2018)  
Percentile statistics : 20191225.v01 (using entries in the PDB archive December 25th 2019)  
Refmac : 5.8.0158  
CCP4 : 7.0.044 (Gargrove)  
Ideal geometry (proteins) : Engh & Huber (2001)  
Ideal geometry (DNA, RNA) : Parkinson et al. (1996)  
Validation Pipeline (wwPDB-VP) : 2.35.1

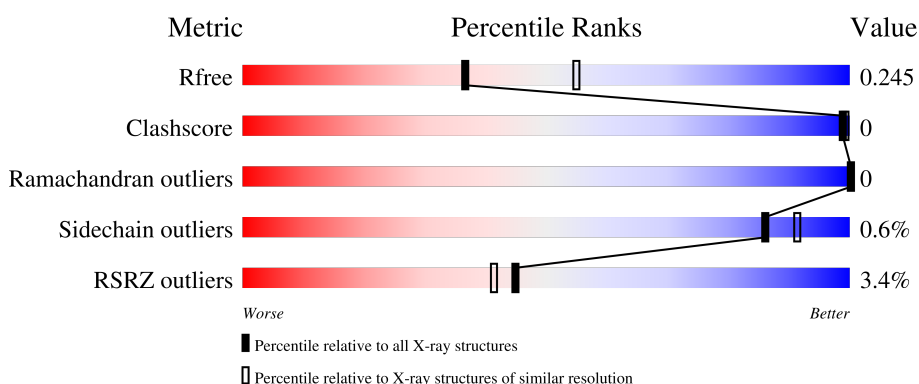
# 1 Overall quality at a glance i

The following experimental techniques were used to determine the structure:

*X-RAY DIFFRACTION*

The reported resolution of this entry is 2.45 Å.

Percentile scores (ranging between 0-100) for global validation metrics of the entry are shown in the following graphic. The table shows the number of entries on which the scores are based.



Metric	Whole archive (#Entries)	Similar resolution (#Entries, resolution range(Å))
$R_{free}$	130704	1544 (2.48-2.44)
Clashscore	141614	1613 (2.48-2.44)
Ramachandran outliers	138981	1598 (2.48-2.44)
Sidechain outliers	138945	1598 (2.48-2.44)
RSRZ outliers	127900	1523 (2.48-2.44)

The table below summarises the geometric issues observed across the polymeric chains and their fit to the electron density. The red, orange, yellow and green segments of the lower bar indicate the fraction of residues that contain outliers for  $\geq 3$ , 2, 1 and 0 types of geometric quality criteria respectively. A grey segment represents the fraction of residues that are not modelled. The numeric value for each fraction is indicated below the corresponding segment, with a dot representing fractions  $\leq 5\%$ . The upper red bar (where present) indicates the fraction of residues that have poor fit to the electron density. The numeric value is given above the bar.

Mol	Chain	Length	Quality of chain
1	A	364	<p>2% 86% 13%</p>
1	B	364	<p>4% 81% 18%</p>
1	C	364	<p>3% 85% 13%</p>
1	D	364	<p>2% 84% 14%</p>

## 2 Entry composition i

There are 5 unique types of molecules in this entry. The entry contains 10019 atoms, of which 0 are hydrogens and 0 are deuteriums.

In the tables below, the ZeroOcc column contains the number of atoms modelled with zero occupancy, the AltConf column contains the number of residues with at least one atom in alternate conformation and the Trace column contains the number of residues modelled with at most 2 atoms.

- Molecule 1 is a protein called Serine/threonine-protein kinase VRK1.

Mol	Chain	Residues	Atoms					ZeroOcc	AltConf	Trace
			Total	C	N	O	S			
1	A	316	2481	1587	418	463	13	0	0	0
1	B	297	2333	1498	402	421	12	0	1	0
1	C	316	2495	1597	424	461	13	0	2	0
1	D	313	2429	1557	413	448	11	0	1	0

There are 52 discrepancies between the modelled and reference sequences:

Chain	Residue	Modelled	Actual	Comment	Reference
A	1	SER	-	expression tag	UNP Q99986
A	2	MET	-	expression tag	UNP Q99986
A	34	ALA	LYS	engineered mutation	UNP Q99986
A	35	ALA	LYS	engineered mutation	UNP Q99986
A	36	ALA	GLU	engineered mutation	UNP Q99986
A	212	ALA	GLU	engineered mutation	UNP Q99986
A	214	ALA	LYS	engineered mutation	UNP Q99986
A	215	ALA	GLU	engineered mutation	UNP Q99986
A	292	ALA	GLU	engineered mutation	UNP Q99986
A	293	ALA	LYS	engineered mutation	UNP Q99986
A	295	ALA	LYS	engineered mutation	UNP Q99986
A	359	ALA	LYS	engineered mutation	UNP Q99986
A	360	ALA	LYS	engineered mutation	UNP Q99986
B	1	SER	-	expression tag	UNP Q99986
B	2	MET	-	expression tag	UNP Q99986
B	34	ALA	LYS	engineered mutation	UNP Q99986
B	35	ALA	LYS	engineered mutation	UNP Q99986
B	36	ALA	GLU	engineered mutation	UNP Q99986
B	212	ALA	GLU	engineered mutation	UNP Q99986
B	214	ALA	LYS	engineered mutation	UNP Q99986
B	215	ALA	GLU	engineered mutation	UNP Q99986

*Continued on next page...*

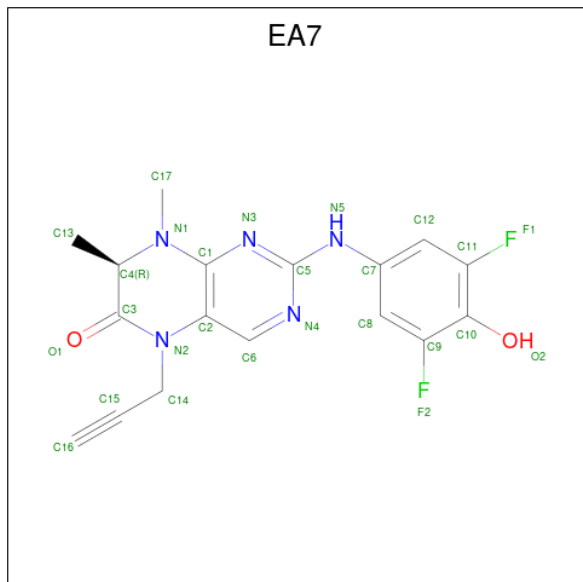
Continued from previous page...

Chain	Residue	Modelled	Actual	Comment	Reference
B	292	ALA	GLU	engineered mutation	UNP Q99986
B	293	ALA	LYS	engineered mutation	UNP Q99986
B	295	ALA	LYS	engineered mutation	UNP Q99986
B	359	ALA	LYS	engineered mutation	UNP Q99986
B	360	ALA	LYS	engineered mutation	UNP Q99986
C	1	SER	-	expression tag	UNP Q99986
C	2	MET	-	expression tag	UNP Q99986
C	34	ALA	LYS	engineered mutation	UNP Q99986
C	35	ALA	LYS	engineered mutation	UNP Q99986
C	36	ALA	GLU	engineered mutation	UNP Q99986
C	212	ALA	GLU	engineered mutation	UNP Q99986
C	214	ALA	LYS	engineered mutation	UNP Q99986
C	215	ALA	GLU	engineered mutation	UNP Q99986
C	292	ALA	GLU	engineered mutation	UNP Q99986
C	293	ALA	LYS	engineered mutation	UNP Q99986
C	295	ALA	LYS	engineered mutation	UNP Q99986
C	359	ALA	LYS	engineered mutation	UNP Q99986
C	360	ALA	LYS	engineered mutation	UNP Q99986
D	1	SER	-	expression tag	UNP Q99986
D	2	MET	-	expression tag	UNP Q99986
D	34	ALA	LYS	engineered mutation	UNP Q99986
D	35	ALA	LYS	engineered mutation	UNP Q99986
D	36	ALA	GLU	engineered mutation	UNP Q99986
D	212	ALA	GLU	engineered mutation	UNP Q99986
D	214	ALA	LYS	engineered mutation	UNP Q99986
D	215	ALA	GLU	engineered mutation	UNP Q99986
D	292	ALA	GLU	engineered mutation	UNP Q99986
D	293	ALA	LYS	engineered mutation	UNP Q99986
D	295	ALA	LYS	engineered mutation	UNP Q99986
D	359	ALA	LYS	engineered mutation	UNP Q99986
D	360	ALA	LYS	engineered mutation	UNP Q99986

- Molecule 2 is CHLORIDE ION (three-letter code: CL) (formula: Cl).

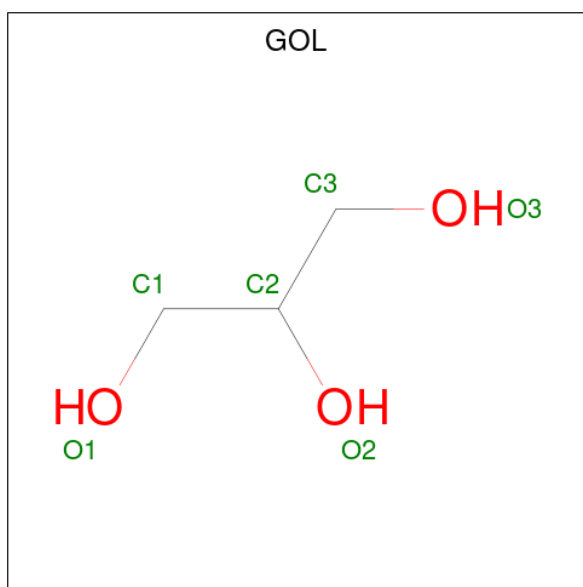
Mol	Chain	Residues	Atoms	ZeroOcc	AltConf
2	A	1	Total Cl 1 1	0	0
2	B	2	Total Cl 2 2	0	0
2	C	1	Total Cl 1 1	0	0
2	D	3	Total Cl 3 3	0	0

- Molecule 3 is (7R)-2-[(3,5-difluoro-4-hydroxyphenyl)amino]-7,8-dimethyl-5-(prop-2-yn-1-yl)-7,8-dihydropteridin-6(5H)-one (three-letter code: EA7) (formula: C<sub>17</sub>H<sub>15</sub>F<sub>2</sub>N<sub>5</sub>O<sub>2</sub>).



Mol	Chain	Residues	Atoms					ZeroOcc	AltConf
			Total	C	F	N	O		
3	A	1	Total	C	F	N	O	0	0
			26	17	2	5	2		
3	B	1	Total	C	F	N	O	0	0
			26	17	2	5	2		
3	D	1	Total	C	F	N	O	0	0
			26	17	2	5	2		

- Molecule 4 is GLYCEROL (three-letter code: GOL) (formula: C<sub>3</sub>H<sub>8</sub>O<sub>3</sub>).



Mol	Chain	Residues	Atoms			ZeroOcc	AltConf
4	B	1	Total	C	O	0	0
			6	3	3		

- Molecule 5 is water.

Mol	Chain	Residues	Atoms		ZeroOcc	AltConf
5	A	53	Total	O	0	0
			53	53		
5	B	34	Total	O	0	0
			34	34		
5	C	52	Total	O	0	0
			52	52		
5	D	51	Total	O	0	0
			51	51		





VAL  
GLU  
ASN  
GLY  
GLY  
LEU  
LYS  
ALA  
LYS  
THR  
ILE  
THR  
LYS  
LYS  
ARG  
ALA  
ALA  
GLU  
ILE  
GLU  
GLU

## 4 Data and refinement statistics

Property	Value	Source
Space group	P 21 21 21	Depositor
Cell constants a, b, c, $\alpha$ , $\beta$ , $\gamma$	91.62Å 96.84Å 192.32Å 90.00° 90.00° 90.00°	Depositor
Resolution (Å)	20.00 – 2.45 20.00 – 2.45	Depositor EDS
% Data completeness (in resolution range)	98.7 (20.00-2.45) 98.9 (20.00-2.45)	Depositor EDS
$R_{merge}$	0.20	Depositor
$R_{sym}$	(Not available)	Depositor
$\langle I/\sigma(I) \rangle$ <sup>1</sup>	1.20 (at 2.44Å)	Xtrriage
Refinement program	REFMAC 5.8.0189	Depositor
R, $R_{free}$	0.201 , 0.245 0.207 , 0.245	Depositor DCC
$R_{free}$ test set	3032 reflections (4.80%)	wwPDB-VP
Wilson B-factor (Å <sup>2</sup> )	34.0	Xtrriage
Anisotropy	0.916	Xtrriage
Bulk solvent $k_{sol}$ (e/Å <sup>3</sup> ), $B_{sol}$ (Å <sup>2</sup> )	0.38 , 41.3	EDS
L-test for twinning <sup>2</sup>	$\langle  L  \rangle = 0.50$ , $\langle L^2 \rangle = 0.33$	Xtrriage
Estimated twinning fraction	No twinning to report.	Xtrriage
$F_o, F_c$ correlation	0.94	EDS
Total number of atoms	10019	wwPDB-VP
Average B, all atoms (Å <sup>2</sup> )	42.0	wwPDB-VP

Xtrriage's analysis on translational NCS is as follows: *The largest off-origin peak in the Patterson function is 3.43% of the height of the origin peak. No significant pseudotranslation is detected.*

<sup>1</sup>Intensities estimated from amplitudes.

<sup>2</sup>Theoretical values of  $\langle |L| \rangle$ ,  $\langle L^2 \rangle$  for acentric reflections are 0.5, 0.333 respectively for untwinned datasets, and 0.375, 0.2 for perfectly twinned datasets.

## 5 Model quality [i](#)

### 5.1 Standard geometry [i](#)

Bond lengths and bond angles in the following residue types are not validated in this section: CL, EA7, GOL

The Z score for a bond length (or angle) is the number of standard deviations the observed value is removed from the expected value. A bond length (or angle) with  $|Z| > 5$  is considered an outlier worth inspection. RMSZ is the root-mean-square of all Z scores of the bond lengths (or angles).

Mol	Chain	Bond lengths		Bond angles	
		RMSZ	# Z  >5	RMSZ	# Z  >5
1	A	0.43	0/2540	0.62	0/3448
1	B	0.44	0/2391	0.63	0/3238
1	C	0.44	0/2560	0.62	0/3471
1	D	0.45	0/2489	0.64	0/3380
All	All	0.44	0/9980	0.63	0/13537

There are no bond length outliers.

There are no bond angle outliers.

There are no chirality outliers.

There are no planarity outliers.

### 5.2 Too-close contacts [i](#)

In the following table, the Non-H and H(model) columns list the number of non-hydrogen atoms and hydrogen atoms in the chain respectively. The H(added) column lists the number of hydrogen atoms added and optimized by MolProbity. The Clashes column lists the number of clashes within the asymmetric unit, whereas Symm-Clashes lists symmetry-related clashes.

Mol	Chain	Non-H	H(model)	H(added)	Clashes	Symm-Clashes
1	A	2481	0	2383	1	0
1	B	2333	0	2245	0	0
1	C	2495	0	2416	3	0
1	D	2429	0	2308	2	0
2	A	1	0	0	0	0
2	B	2	0	0	0	0
2	C	1	0	0	0	0
2	D	3	0	0	0	0
3	A	26	0	0	0	0

*Continued on next page...*

Continued from previous page...

Mol	Chain	Non-H	H(model)	H(added)	Clashes	Symm-Clashes
3	B	26	0	0	0	0
3	D	26	0	0	1	0
4	B	6	0	8	0	0
5	A	53	0	0	0	0
5	B	34	0	0	0	0
5	C	52	0	0	0	0
5	D	51	0	0	0	0
All	All	10019	0	9360	7	0

The all-atom clashscore is defined as the number of clashes found per 1000 atoms (including hydrogen atoms). The all-atom clashscore for this structure is 0.

All (7) close contacts within the same asymmetric unit are listed below, sorted by their clash magnitude.

Atom-1	Atom-2	Interatomic distance (Å)	Clash overlap (Å)
1:C:200:LEU:HD13	1:C:221:HIS:CG	2.42	0.54
1:C:204:TYR:CE2	1:C:205:CYS:HB2	2.50	0.47
1:A:87:TYR:HB3	1:A:113:TYR:HB2	1.97	0.46
3:D:404:EA7:C8	3:D:404:EA7:N3	2.76	0.45
1:C:213:TYR:O	1:C:213:TYR:CD2	2.71	0.44
1:D:204:TYR:CE2	1:D:205:CYS:HB2	2.55	0.41
1:D:156:GLN:HG3	1:D:338:LYS:O	2.20	0.41

There are no symmetry-related clashes.

## 5.3 Torsion angles [\(i\)](#)

### 5.3.1 Protein backbone [\(i\)](#)

In the following table, the Percentiles column shows the percent Ramachandran outliers of the chain as a percentile score with respect to all X-ray entries followed by that with respect to entries of similar resolution.

The Analysed column shows the number of residues for which the backbone conformation was analysed, and the total number of residues.

Mol	Chain	Analysed	Favoured	Allowed	Outliers	Percentiles
1	A	312/364 (86%)	306 (98%)	6 (2%)	0	100 100
1	B	288/364 (79%)	280 (97%)	8 (3%)	0	100 100

Continued on next page...

Continued from previous page...

Mol	Chain	Analysed	Favoured	Allowed	Outliers	Percentiles	
1	C	314/364 (86%)	306 (98%)	8 (2%)	0	100	100
1	D	308/364 (85%)	297 (96%)	11 (4%)	0	100	100
All	All	1222/1456 (84%)	1189 (97%)	33 (3%)	0	100	100

There are no Ramachandran outliers to report.

### 5.3.2 Protein sidechains [i](#)

In the following table, the Percentiles column shows the percent sidechain outliers of the chain as a percentile score with respect to all X-ray entries followed by that with respect to entries of similar resolution.

The Analysed column shows the number of residues for which the sidechain conformation was analysed, and the total number of residues.

Mol	Chain	Analysed	Rotameric	Outliers	Percentiles	
1	A	254/304 (84%)	253 (100%)	1 (0%)	91	94
1	B	233/304 (77%)	232 (100%)	1 (0%)	91	94
1	C	256/304 (84%)	254 (99%)	2 (1%)	81	88
1	D	239/304 (79%)	237 (99%)	2 (1%)	81	88
All	All	982/1216 (81%)	976 (99%)	6 (1%)	86	91

All (6) residues with a non-rotameric sidechain are listed below:

Mol	Chain	Res	Type
1	A	133	ARG
1	B	187	TYR
1	C	133	ARG
1	C	269	LYS
1	D	133	ARG
1	D	340	ASP

Sometimes sidechains can be flipped to improve hydrogen bonding and reduce clashes. There are no such sidechains identified.

### 5.3.3 RNA [i](#)

There are no RNA molecules in this entry.

## 5.4 Non-standard residues in protein, DNA, RNA chains [i](#)

There are no non-standard protein/DNA/RNA residues in this entry.

## 5.5 Carbohydrates [i](#)

There are no monosaccharides in this entry.

## 5.6 Ligand geometry [i](#)

Of 11 ligands modelled in this entry, 7 are monoatomic - leaving 4 for Mogul analysis.

In the following table, the Counts columns list the number of bonds (or angles) for which Mogul statistics could be retrieved, the number of bonds (or angles) that are observed in the model and the number of bonds (or angles) that are defined in the Chemical Component Dictionary. The Link column lists molecule types, if any, to which the group is linked. The Z score for a bond length (or angle) is the number of standard deviations the observed value is removed from the expected value. A bond length (or angle) with  $|Z| > 2$  is considered an outlier worth inspection. RMSZ is the root-mean-square of all Z scores of the bond lengths (or angles).

Mol	Type	Chain	Res	Link	Bond lengths			Bond angles		
					Counts	RMSZ	# Z  > 2	Counts	RMSZ	# Z  > 2
3	EA7	B	404	-	28,28,28	0.78	1 (3%)	34,41,41	1.44	6 (17%)
3	EA7	A	402	-	28,28,28	0.93	2 (7%)	34,41,41	1.49	6 (17%)
3	EA7	D	404	-	28,28,28	0.43	0	34,41,41	1.11	4 (11%)
4	GOL	B	403	-	5,5,5	0.39	0	5,5,5	0.53	0

In the following table, the Chirals column lists the number of chiral outliers, the number of chiral centers analysed, the number of these observed in the model and the number defined in the Chemical Component Dictionary. Similar counts are reported in the Torsion and Rings columns. '2' means no outliers of that kind were identified.

Mol	Type	Chain	Res	Link	Chirals	Torsions	Rings
3	EA7	B	404	-	-	2/6/27/27	0/3/3/3
3	EA7	A	402	-	-	0/6/27/27	0/3/3/3
3	EA7	D	404	-	-	0/6/27/27	0/3/3/3
4	GOL	B	403	-	-	2/4/4/4	-

All (3) bond length outliers are listed below:

Mol	Chain	Res	Type	Atoms	Z	Observed(Å)	Ideal(Å)
3	A	402	EA7	C4-N1	2.66	1.48	1.46

*Continued on next page...*

*Continued from previous page...*

Mol	Chain	Res	Type	Atoms	Z	Observed(Å)	Ideal(Å)
3	B	404	EA7	C6-C2	2.28	1.42	1.39
3	A	402	EA7	C2-C1	2.14	1.43	1.41

All (16) bond angle outliers are listed below:

Mol	Chain	Res	Type	Atoms	Z	Observed(°)	Ideal(°)
3	A	402	EA7	C15-C14-N2	3.82	115.85	112.67
3	B	404	EA7	C15-C14-N2	3.62	115.68	112.67
3	A	402	EA7	F1-C11-C10	3.31	119.58	117.13
3	B	404	EA7	C14-C15-C16	-2.88	172.84	177.67
3	B	404	EA7	C8-C9-C10	-2.75	121.64	123.79
3	D	404	EA7	F1-C11-C10	2.40	118.91	117.13
3	D	404	EA7	C12-C11-C10	-2.39	121.92	123.79
3	D	404	EA7	C8-C9-C10	-2.35	121.95	123.79
3	A	402	EA7	C14-C15-C16	-2.31	173.79	177.67
3	D	404	EA7	F2-C9-C10	2.31	118.84	117.13
3	B	404	EA7	F2-C9-C10	2.25	118.80	117.13
3	A	402	EA7	N4-C5-N3	-2.15	124.51	126.55
3	A	402	EA7	C8-C9-C10	-2.10	122.15	123.79
3	B	404	EA7	C12-C11-C10	-2.10	122.15	123.79
3	A	402	EA7	C13-C4-N1	-2.04	109.22	112.08
3	B	404	EA7	N4-C5-N3	-2.01	124.64	126.55

There are no chirality outliers.

All (4) torsion outliers are listed below:

Mol	Chain	Res	Type	Atoms
4	B	403	GOL	O1-C1-C2-C3
4	B	403	GOL	O1-C1-C2-O2
3	B	404	EA7	N3-C5-N5-C7
3	B	404	EA7	N4-C5-N5-C7

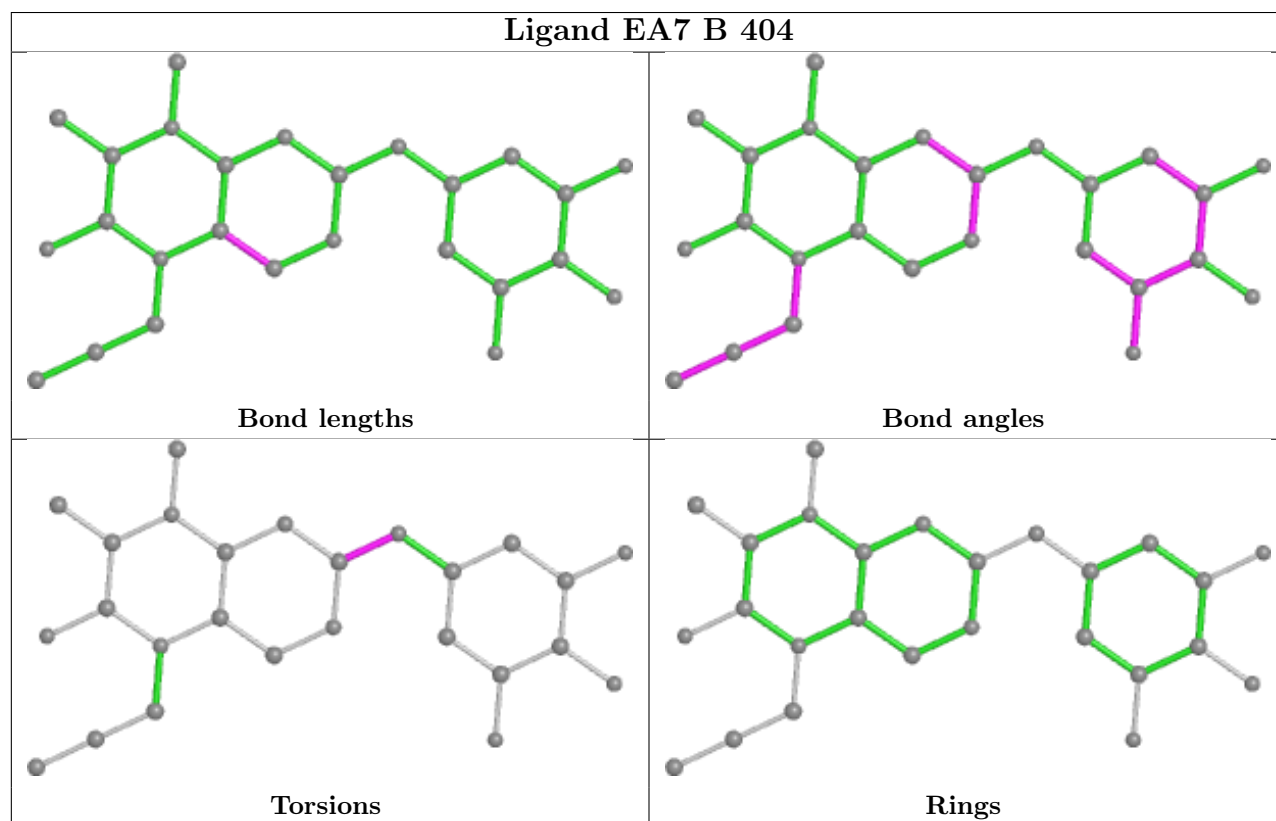
There are no ring outliers.

1 monomer is involved in 1 short contact:

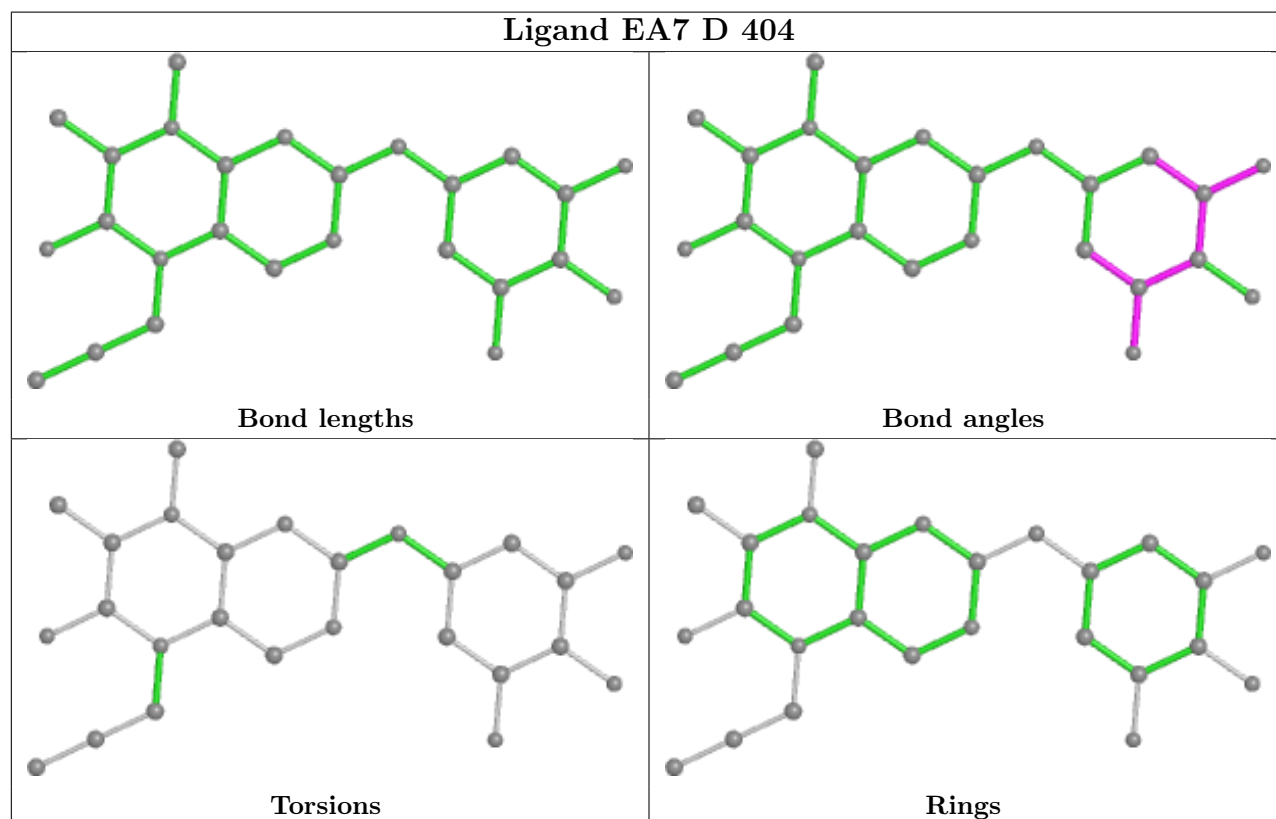
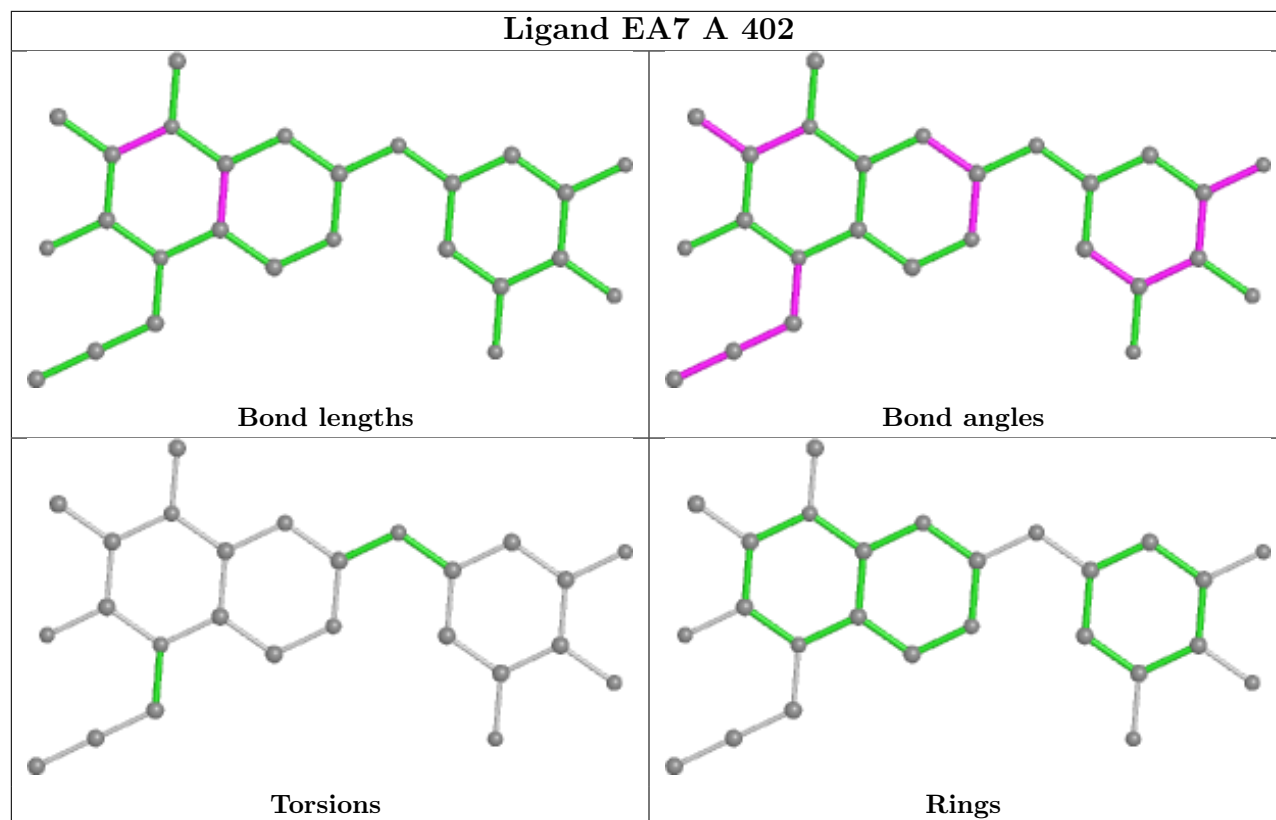
Mol	Chain	Res	Type	Clashes	Symm-Clashes
3	D	404	EA7	1	0

The following is a two-dimensional graphical depiction of Mogul quality analysis of bond lengths, bond angles, torsion angles, and ring geometry for all instances of the Ligand of Interest. In addition, ligands with molecular weight > 250 and outliers as shown on the validation Tables will

also be included. For torsion angles, if less than 5% of the Mogul distribution of torsion angles is within 10 degrees of the torsion angle in question, then that torsion angle is considered an outlier. Any bond that is central to one or more torsion angles identified as an outlier by Mogul will be highlighted in the graph. For rings, the root-mean-square deviation (RMSD) between the ring in question and similar rings identified by Mogul is calculated over all ring torsion angles. If the average RMSD is greater than 60 degrees and the minimal RMSD between the ring in question and any Mogul-identified rings is also greater than 60 degrees, then that ring is considered an outlier. The outliers are highlighted in purple. The color gray indicates Mogul did not find sufficient equivalents in the CSD to analyse the geometry.







## 5.7 Other polymers [i](#)

There are no such residues in this entry.

## 5.8 Polymer linkage issues [i](#)

There are no chain breaks in this entry.

## 6 Fit of model and data

### 6.1 Protein, DNA and RNA chains

In the following table, the column labelled ‘#RSRZ > 2’ contains the number (and percentage) of RSRZ outliers, followed by percent RSRZ outliers for the chain as percentile scores relative to all X-ray entries and entries of similar resolution. The OWAB column contains the minimum, median, 95<sup>th</sup> percentile and maximum values of the occupancy-weighted average B-factor per residue. The column labelled ‘Q < 0.9’ lists the number of (and percentage) of residues with an average occupancy less than 0.9.

Mol	Chain	Analysed	<RSRZ>	#RSRZ>2	OWAB(Å <sup>2</sup> )	Q<0.9
1	A	316/364 (86%)	-0.08	9 (2%) 53 49	25, 38, 61, 90	0
1	B	297/364 (81%)	0.07	14 (4%) 31 29	25, 44, 80, 101	0
1	C	316/364 (86%)	-0.07	10 (3%) 47 44	23, 39, 64, 93	0
1	D	313/364 (85%)	-0.03	9 (2%) 51 47	23, 38, 74, 97	0
All	All	1242/1456 (85%)	-0.03	42 (3%) 45 41	23, 39, 73, 101	0

All (42) RSRZ outliers are listed below:

Mol	Chain	Res	Type	RSRZ
1	D	77	ASN	6.0
1	C	220	CYS	6.0
1	A	217	PRO	5.3
1	D	122	ASN	4.4
1	C	122	ASN	4.1
1	C	217	PRO	4.1
1	C	123	GLY	4.1
1	A	220	CYS	3.5
1	B	24	ALA	3.5
1	A	59	SER	3.5
1	C	218	LYS	3.4
1	A	218	LYS	3.4
1	B	34	ALA	3.3
1	C	215	ALA	3.2
1	B	64	SER	3.2
1	D	49	GLY	3.2
1	B	23	PHE	3.2
1	B	294	ASN	3.1
1	A	293	ALA	3.1
1	A	263	ASP	2.9
1	B	70	VAL	2.9

*Continued on next page...*

*Continued from previous page...*

Mol	Chain	Res	Type	RSRZ
1	C	187	TYR	2.9
1	B	332	GLY	2.9
1	D	294	ASN	2.8
1	D	76	ASP	2.7
1	C	59	SER	2.7
1	A	65	ASP	2.6
1	B	25	VAL	2.6
1	D	60	GLU	2.6
1	B	67	PRO	2.6
1	B	114	TRP	2.4
1	B	63	GLY	2.3
1	B	81	PHE	2.3
1	D	63	GLY	2.3
1	C	65	ASP	2.2
1	B	69	VAL	2.2
1	A	294	ASN	2.2
1	D	57	ASN	2.1
1	B	36	ALA	2.1
1	D	24	ALA	2.1
1	A	287	ASP	2.1
1	C	50	CYS	2.1

## 6.2 Non-standard residues in protein, DNA, RNA chains [i](#)

There are no non-standard protein/DNA/RNA residues in this entry.

## 6.3 Carbohydrates [i](#)

There are no monosaccharides in this entry.

## 6.4 Ligands [i](#)

In the following table, the Atoms column lists the number of modelled atoms in the group and the number defined in the chemical component dictionary. The B-factors column lists the minimum, median, 95<sup>th</sup> percentile and maximum values of B factors of atoms in the group. The column labelled 'Q< 0.9' lists the number of atoms with occupancy less than 0.9.

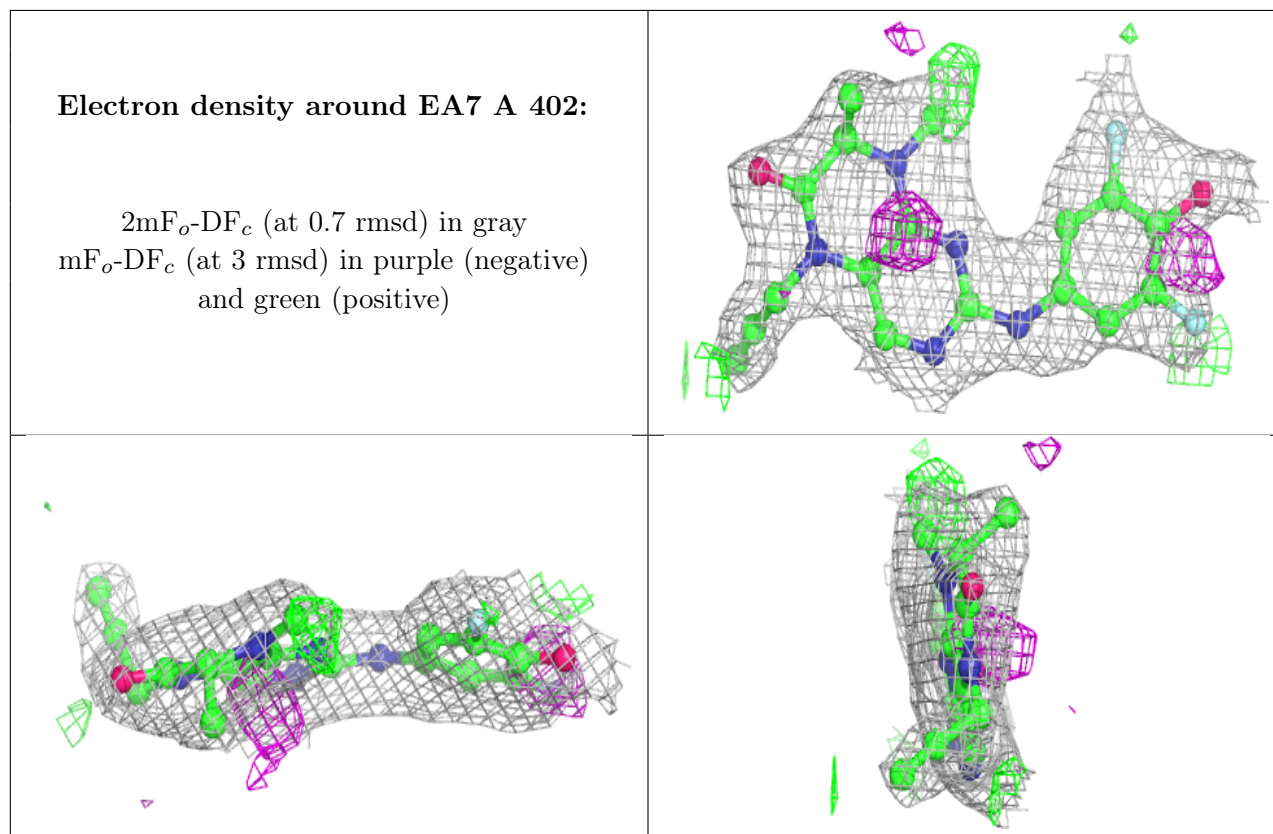
Mol	Type	Chain	Res	Atoms	RSCC	RSR	B-factors(Å <sup>2</sup> )	Q<0.9
2	CL	B	401	1/1	0.79	0.11	59,59,59,59	0
3	EA7	A	402	26/26	0.85	0.20	45,47,52,53	0

*Continued on next page...*

Continued from previous page...

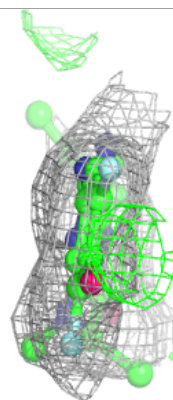
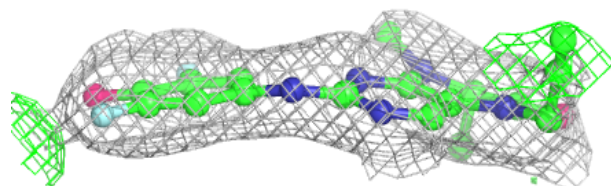
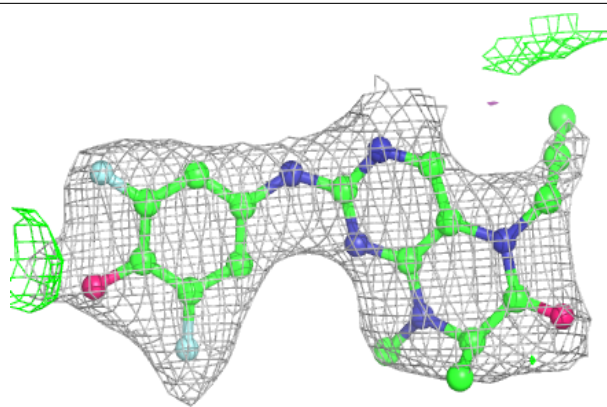
Mol	Type	Chain	Res	Atoms	RSCC	RSR	B-factors( $\text{\AA}^2$ )	Q<0.9
2	CL	C	401	1/1	0.88	0.09	57,57,57,57	0
2	CL	B	402	1/1	0.88	0.13	60,60,60,60	0
2	CL	A	401	1/1	0.90	0.07	64,64,64,64	0
2	CL	D	402	1/1	0.91	0.12	47,47,47,47	0
3	EA7	B	404	26/26	0.91	0.18	43,52,58,63	0
4	GOL	B	403	6/6	0.93	0.16	35,40,41,44	0
3	EA7	D	404	26/26	0.97	0.12	28,32,38,41	0
2	CL	D	403	1/1	0.98	0.11	58,58,58,58	0
2	CL	D	401	1/1	0.99	0.12	41,41,41,41	0

The following is a graphical depiction of the model fit to experimental electron density of all instances of the Ligand of Interest. In addition, ligands with molecular weight > 250 and outliers as shown on the geometry validation Tables will also be included. Each fit is shown from different orientation to approximate a three-dimensional view.

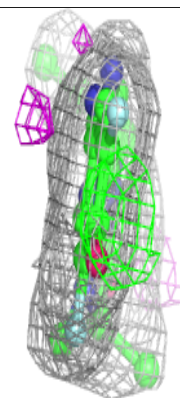
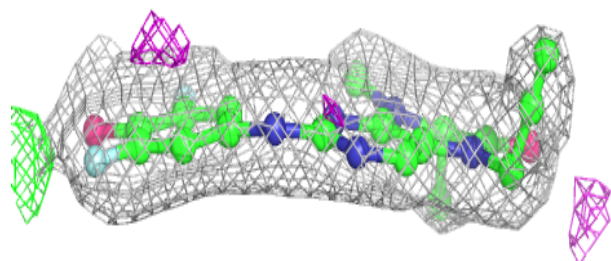
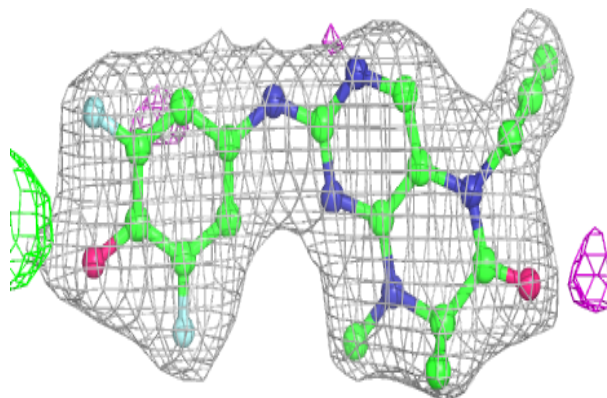


**Electron density around EA7 B 404:**

$2mF_o-DF_c$  (at 0.7 rmsd) in gray  
 $mF_o-DF_c$  (at 3 rmsd) in purple (negative)  
and green (positive)

**Electron density around EA7 D 404:**

$2mF_o-DF_c$  (at 0.7 rmsd) in gray  
 $mF_o-DF_c$  (at 3 rmsd) in purple (negative)  
and green (positive)



## 6.5 Other polymers [i](#)

There are no such residues in this entry.