



Full wwPDB X-ray Structure Validation Report ⓘ

Nov 14, 2023 – 07:25 PM JST

PDB ID : 6A2O
Title : Crystal structure of wild type Plasmodium falciparum DHFR-TS complexed with BT3, NADPH, and dUMP
Authors : Chitnumsub, P.; Jaruwat, A.; Tarnchampoo, B.; Yuthavong, Y.
Deposited on : 2018-06-12
Resolution : 2.35 Å (reported)

This is a Full wwPDB X-ray Structure Validation Report for a publicly released PDB entry.

We welcome your comments at validation@mail.wwpdb.org

A user guide is available at

<https://www.wwpdb.org/validation/2017/XrayValidationReportHelp>

with specific help available everywhere you see the ⓘ symbol.

The types of validation reports are described at

<http://www.wwpdb.org/validation/2017/FAQs#types>.

The following versions of software and data (see [references ⓘ](#)) were used in the production of this report:

MolProbity : 4.02b-467
Mogul : 1.8.5 (274361), CSD as541be (2020)
Xtrriage (Phenix) : 1.13
EDS : 2.36
buster-report : 1.1.7 (2018)
Percentile statistics : 20191225.v01 (using entries in the PDB archive December 25th 2019)
Refmac : 5.8.0158
CCP4 : 7.0.044 (Gargrove)
Ideal geometry (proteins) : Engh & Huber (2001)
Ideal geometry (DNA, RNA) : Parkinson et al. (1996)
Validation Pipeline (wwPDB-VP) : 2.36

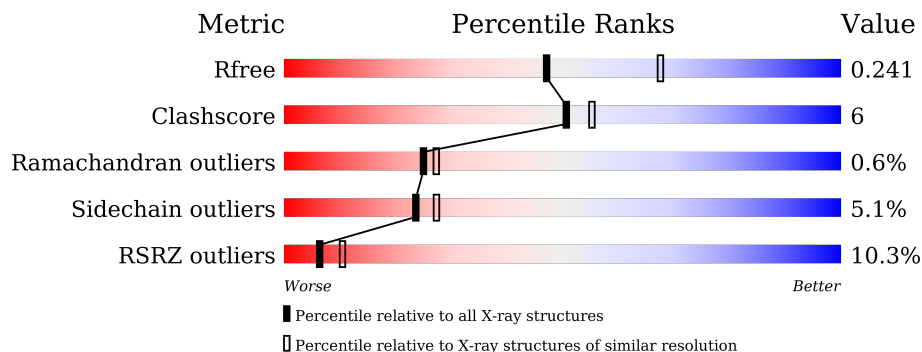
1 Overall quality at a glance i

The following experimental techniques were used to determine the structure:

X-RAY DIFFRACTION

The reported resolution of this entry is 2.35 Å.

Percentile scores (ranging between 0-100) for global validation metrics of the entry are shown in the following graphic. The table shows the number of entries on which the scores are based.



Metric	Whole archive (#Entries)	Similar resolution (#Entries, resolution range(Å))
R_{free}	130704	1164 (2.36-2.36)
Clashscore	141614	1232 (2.36-2.36)
Ramachandran outliers	138981	1211 (2.36-2.36)
Sidechain outliers	138945	1212 (2.36-2.36)
RSRZ outliers	127900	1150 (2.36-2.36)

The table below summarises the geometric issues observed across the polymeric chains and their fit to the electron density. The red, orange, yellow and green segments of the lower bar indicate the fraction of residues that contain outliers for ≥ 3 , 2, 1 and 0 types of geometric quality criteria respectively. A grey segment represents the fraction of residues that are not modelled. The numeric value for each fraction is indicated below the corresponding segment, with a dot representing fractions $\leq 5\%$. The upper red bar (where present) indicates the fraction of residues that have poor fit to the electron density. The numeric value is given above the bar.

Mol	Chain	Length	Quality of chain
1	A	608	 6% 76% 13% • 10%
1	B	608	 12% 73% 15% • 11%

2 Entry composition i

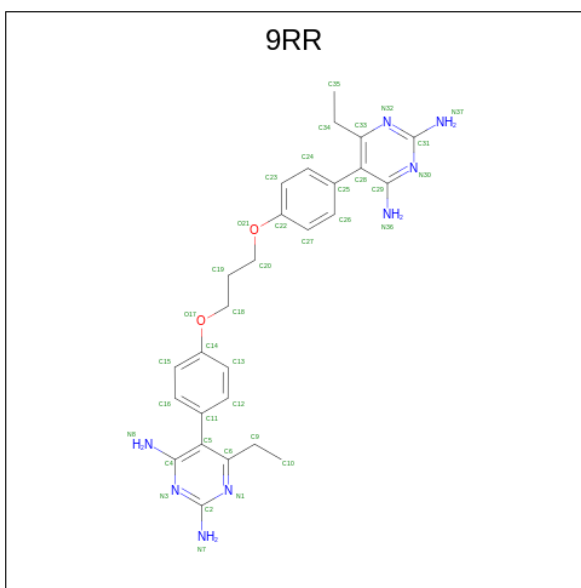
There are 5 unique types of molecules in this entry. The entry contains 9888 atoms, of which 0 are hydrogens and 0 are deuteriums.

In the tables below, the ZeroOcc column contains the number of atoms modelled with zero occupancy, the AltConf column contains the number of residues with at least one atom in alternate conformation and the Trace column contains the number of residues modelled with at most 2 atoms.

- Molecule 1 is a protein called Bifunctional dihydrofolate reductase-thymidylate synthase.

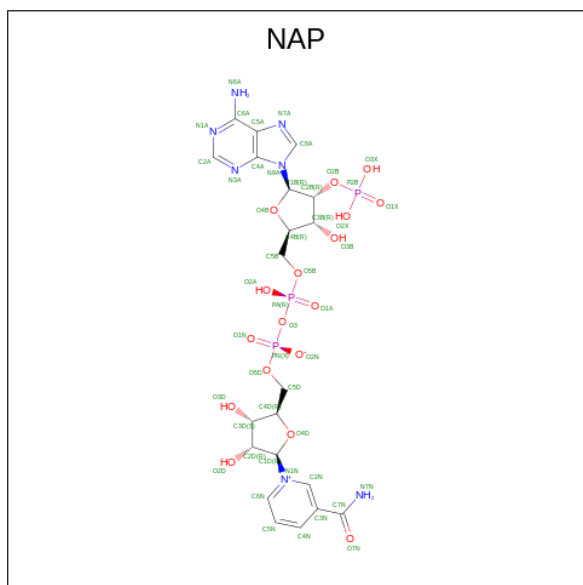
Mol	Chain	Residues	Atoms					ZeroOcc	AltConf	Trace
			Total	C	N	O	S			
1	A	547	Total 4543	C 2931	N 750	O 834	S 28	0	0	0
1	B	542	Total 4501	C 2906	N 742	O 825	S 28	0	0	0

- Molecule 2 is 5,5'-[propane-1,3-diylbis(oxy-4,1-phenylene)]bis(6-ethylpyrimidine-2,4-diamine) (three-letter code: 9RR) (formula: C₂₇H₃₂N₈O₂).



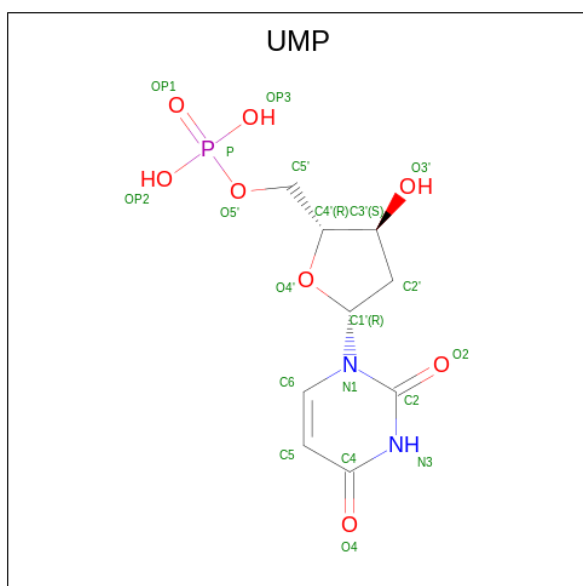
Mol	Chain	Residues	Atoms				ZeroOcc	AltConf
			Total	C	N	O		
2	A	1	Total 37	C 27	N 8	O 2	0	0
2	B	1	Total 37	C 27	N 8	O 2	0	0

- Molecule 3 is NADP NICOTINAMIDE-ADENINE-DINUCLEOTIDE PHOSPHATE (three-letter code: NAP) (formula: C₂₁H₂₈N₇O₁₇P₃).



Mol	Chain	Residues	Atoms				ZeroOcc	AltConf	
			Total	C	N	O			P
3	A	1	48	21	7	17	3	0	0
3	B	1	48	21	7	17	3	0	0

- Molecule 4 is 2'-DEOXYURIDINE 5'-MONOPHOSPHATE (three-letter code: UMP) (formula: $C_9H_{13}N_2O_8P$).



Mol	Chain	Residues	Atoms				ZeroOcc	AltConf	
			Total	C	N	O			P
4	A	1	20	9	2	8	1	0	0

Continued on next page...

Continued from previous page...

Mol	Chain	Residues	Atoms					ZeroOcc	AltConf
			Total	C	N	O	P		
4	B	1	20	9	2	8	1	0	0

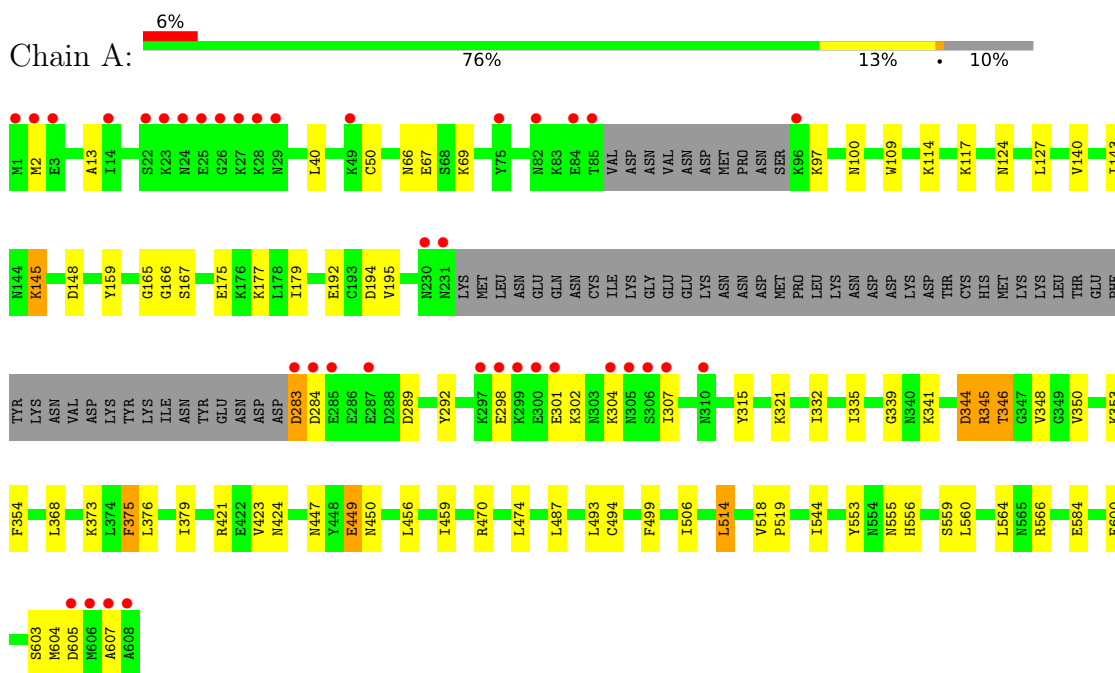
- Molecule 5 is water.

Mol	Chain	Residues	Atoms		ZeroOcc	AltConf
5	A	355	Total	O	0	0
			355	355		
5	B	279	Total	O	0	0
			279	279		

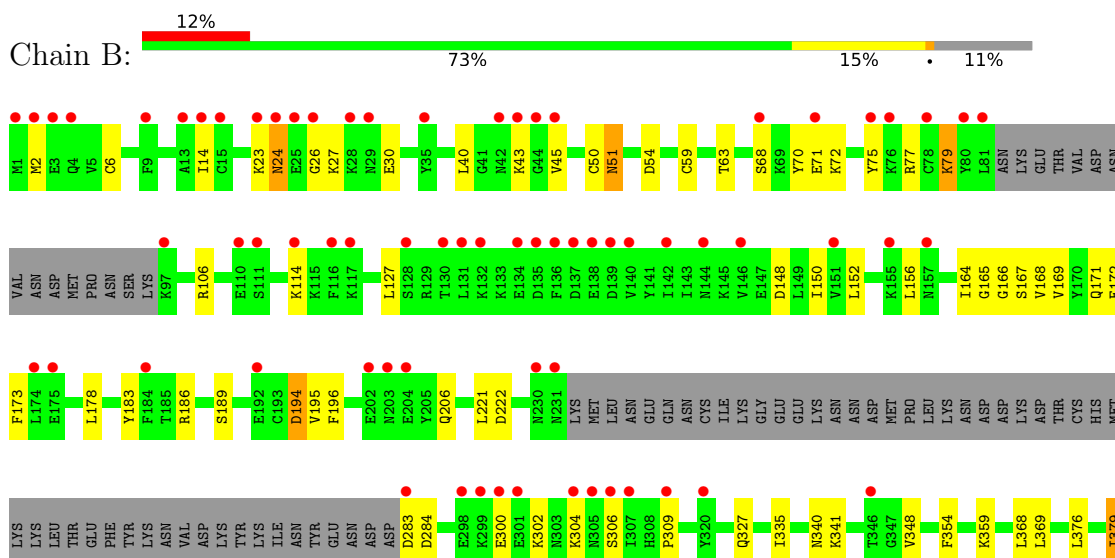
3 Residue-property plots i

These plots are drawn for all protein, RNA, DNA and oligosaccharide chains in the entry. The first graphic for a chain summarises the proportions of the various outlier classes displayed in the second graphic. The second graphic shows the sequence view annotated by issues in geometry and electron density. Residues are color-coded according to the number of geometric quality criteria for which they contain at least one outlier: green = 0, yellow = 1, orange = 2 and red = 3 or more. A red dot above a residue indicates a poor fit to the electron density ($RSRZ > 2$). Stretches of 2 or more consecutive residues without any outlier are shown as a green connector. Residues present in the sample, but not in the model, are shown in grey.

- Molecule 1: Bifunctional dihydrofolate reductase-thymidylate synthase



- Molecule 1: Bifunctional dihydrofolate reductase-thymidylate synthase





4 Data and refinement statistics

Property	Value	Source
Space group	P 21 21 21	Depositor
Cell constants a, b, c, α , β , γ	57.56Å 157.17Å 165.61Å 90.00° 90.00° 90.00°	Depositor
Resolution (Å)	29.41 – 2.35 29.39 – 2.35	Depositor EDS
% Data completeness (in resolution range)	87.0 (29.41-2.35) 87.0 (29.39-2.35)	Depositor EDS
R_{merge}	0.04	Depositor
R_{sym}	(Not available)	Depositor
$\langle I/\sigma(I) \rangle$ ¹	5.24 (at 2.36Å)	Xtrriage
Refinement program	REFMAC 5.8.0222	Depositor
R, R_{free}	0.189 , 0.245 0.188 , 0.241	Depositor DCC
R_{free} test set	5613 reflections (10.15%)	wwPDB-VP
Wilson B-factor (Å ²)	22.5	Xtrriage
Anisotropy	0.307	Xtrriage
Bulk solvent k_{sol} (e/Å ³), B_{sol} (Å ²)	0.33 , 48.5	EDS
L-test for twinning ²	$\langle L \rangle = 0.50$, $\langle L^2 \rangle = 0.33$	Xtrriage
Estimated twinning fraction	0.008 for -h,l,k	Xtrriage
F_o, F_c correlation	0.93	EDS
Total number of atoms	9888	wwPDB-VP
Average B, all atoms (Å ²)	36.0	wwPDB-VP

Xtrriage's analysis on translational NCS is as follows: *The largest off-origin peak in the Patterson function is 3.07% of the height of the origin peak. No significant pseudotranslation is detected.*

¹Intensities estimated from amplitudes.

²Theoretical values of $\langle |L| \rangle$, $\langle L^2 \rangle$ for acentric reflections are 0.5, 0.333 respectively for untwinned datasets, and 0.375, 0.2 for perfectly twinned datasets.

5 Model quality [i](#)

5.1 Standard geometry [i](#)

Bond lengths and bond angles in the following residue types are not validated in this section: UMP, NAP, 9RR

The Z score for a bond length (or angle) is the number of standard deviations the observed value is removed from the expected value. A bond length (or angle) with $|Z| > 5$ is considered an outlier worth inspection. RMSZ is the root-mean-square of all Z scores of the bond lengths (or angles).

Mol	Chain	Bond lengths		Bond angles	
		RMSZ	# Z >5	RMSZ	# Z >5
1	A	0.65	0/4648	0.79	1/6272 (0.0%)
1	B	0.59	0/4606	0.76	2/6217 (0.0%)
All	All	0.62	0/9254	0.78	3/12489 (0.0%)

Chiral center outliers are detected by calculating the chiral volume of a chiral center and verifying if the center is modelled as a planar moiety or with the opposite hand. A planarity outlier is detected by checking planarity of atoms in a peptide group, atoms in a mainchain group or atoms of a sidechain that are expected to be planar.

Mol	Chain	#Chirality outliers	#Planarity outliers
1	A	0	3
1	B	0	3
All	All	0	6

There are no bond length outliers.

All (3) bond angle outliers are listed below:

Mol	Chain	Res	Type	Atoms	Z	Observed($^{\circ}$)	Ideal($^{\circ}$)
1	A	421	ARG	NE-CZ-NH2	-6.01	117.30	120.30
1	B	510	ARG	NE-CZ-NH2	-5.29	117.66	120.30
1	B	388	ARG	NE-CZ-NH1	-5.22	117.69	120.30

There are no chirality outliers.

All (6) planarity outliers are listed below:

Mol	Chain	Res	Type	Group
1	A	165	GLY	Peptide
1	A	345	ARG	Sidechain
1	A	566	ARG	Sidechain

Continued on next page...

Continued from previous page...

Mol	Chain	Res	Type	Group
1	B	164	ILE	Peptide
1	B	402	ARG	Sidechain
1	B	77	ARG	Sidechain

5.2 Too-close contacts [i](#)

In the following table, the Non-H and H(model) columns list the number of non-hydrogen atoms and hydrogen atoms in the chain respectively. The H(added) column lists the number of hydrogen atoms added and optimized by MolProbity. The Clashes column lists the number of clashes within the asymmetric unit, whereas Symm-Clashes lists symmetry-related clashes.

Mol	Chain	Non-H	H(model)	H(added)	Clashes	Symm-Clashes
1	A	4543	0	4497	48	0
1	B	4501	0	4452	55	0
2	A	37	0	0	2	0
2	B	37	0	0	4	0
3	A	48	0	25	4	0
3	B	48	0	25	6	0
4	A	20	0	11	0	0
4	B	20	0	11	1	0
5	A	355	0	0	3	0
5	B	279	0	0	8	0
All	All	9888	0	9021	104	0

The all-atom clashscore is defined as the number of clashes found per 1000 atoms (including hydrogen atoms). The all-atom clashscore for this structure is 6.

All (104) close contacts within the same asymmetric unit are listed below, sorted by their clash magnitude.

Atom-1	Atom-2	Interatomic distance (Å)	Clash overlap (Å)
1:A:344:ASP:OD2	1:A:346:THR:HB	1.77	0.83
1:B:79:LYS:HE2	5:B:854:HOH:O	1.78	0.83
1:A:346:THR:HG22	1:A:348:VAL:H	1.45	0.82
1:B:165:GLY:O	1:B:169:VAL:HB	1.87	0.75
1:A:332:ILE:HD13	1:A:560:LEU:HD22	1.67	0.74
1:B:327:GLN:HE22	1:B:359:LYS:H	1.37	0.71
1:B:493:LEU:HD12	1:B:493:LEU:C	2.12	0.70
1:B:284:ASP:HB2	5:B:946:HOH:O	1.89	0.70
1:B:491:HIS:ND1	5:B:801:HOH:O	2.18	0.69
1:A:166:GLY:HA3	3:A:702:NAP:O1A	1.91	0.69

Continued on next page...

Continued from previous page...

Atom-1	Atom-2	Interatomic distance (Å)	Clash overlap (Å)
1:A:109:TRP:CH2	1:A:117:LYS:HG2	2.28	0.68
1:B:51:ASN:HD22	1:B:54:ASP:H	1.44	0.65
1:A:302:LYS:HE2	1:A:339:GLY:O	1.99	0.62
1:A:373:LYS:HE2	1:A:375:PHE:CZ	2.35	0.62
1:B:152:LEU:HD23	1:B:156:LEU:HD12	1.82	0.62
1:A:584:GLU:HG3	5:A:1031:HOH:O	2.00	0.61
1:A:145:LYS:HD3	1:A:148:ASP:OD2	2.02	0.59
1:A:127:LEU:HD23	1:A:143:ILE:HG13	1.85	0.57
1:A:339:GLY:HA2	1:A:353:LYS:HD3	1.86	0.56
1:A:315:TYR:HB2	1:A:564:LEU:O	2.06	0.56
1:A:100:ASN:OD1	1:A:159:TYR:HB3	2.05	0.56
1:A:555:ASN:ND2	1:A:605:ASP:OD1	2.39	0.55
1:A:607:ALA:HB2	5:A:1116:HOH:O	2.06	0.55
1:A:474:LEU:HB3	1:A:494:CYS:HB2	1.88	0.55
1:B:454:ASP:OD2	1:B:457:LYS:HD3	2.06	0.55
1:B:478:ASN:C	1:B:478:ASN:HD22	2.10	0.55
1:A:493:LEU:C	1:A:493:LEU:HD12	2.27	0.55
1:B:43:LYS:HG3	1:B:194:ASP:OD1	2.08	0.54
1:A:194:ASP:OD1	1:A:195:VAL:HG23	2.08	0.54
1:B:168:VAL:HA	1:B:171:GLN:HB3	1.89	0.54
2:A:701:9RR:C24	3:A:702:NAP:C4N	2.86	0.53
1:A:166:GLY:HA3	3:A:702:NAP:PA	2.47	0.53
1:B:14:ILE:HA	1:B:183:TYR:O	2.08	0.53
1:A:449:GLU:HG3	1:A:450:ASN:HD22	1.75	0.52
1:A:344:ASP:CG	1:A:346:THR:HB	2.30	0.52
1:B:51:ASN:ND2	1:B:54:ASP:H	2.07	0.52
1:B:168:VAL:N	5:B:806:HOH:O	2.43	0.52
1:B:493:LEU:HD12	1:B:493:LEU:O	2.10	0.51
1:A:40:LEU:HD12	1:A:167:SER:HB3	1.93	0.51
1:A:470:ARG:HD3	5:B:932:HOH:O	2.10	0.51
1:B:327:GLN:NE2	1:B:359:LYS:H	2.08	0.51
1:A:283:ASP:N	1:A:283:ASP:OD1	2.44	0.51
1:B:24:ASN:HD22	1:B:24:ASN:N	2.09	0.51
1:B:106:ARG:NH1	3:B:702:NAP:O2X	2.44	0.51
1:B:173:PHE:CD2	1:B:178:LEU:HB2	2.46	0.50
1:B:335:ILE:CD1	1:B:514:LEU:HD13	2.41	0.50
1:A:354:PHE:CE2	1:B:506:ILE:HG13	2.47	0.50
1:A:556:HIS:CD2	1:A:604:MET:HB3	2.48	0.49
1:B:527:ILE:O	1:B:531:MET:HG3	2.14	0.48
1:B:530:HIS:HE1	5:B:827:HOH:O	1.97	0.48
1:B:54:ASP:OD2	2:B:701:9RR:N32	2.47	0.47

Continued on next page...

Continued from previous page...

Atom-1	Atom-2	Interatomic distance (Å)	Clash overlap (Å)
1:B:368:LEU:O	1:B:369:LEU:C	2.50	0.47
1:B:186:ARG:NH2	1:B:222:ASP:OD2	2.30	0.47
1:B:173:PHE:CE2	1:B:178:LEU:HB2	2.50	0.46
2:B:701:9RR:C23	3:B:702:NAP:C5N	2.94	0.46
1:B:474:LEU:HB3	1:B:494:CYS:HB2	1.98	0.46
1:A:449:GLU:OE2	1:A:450:ASN:ND2	2.49	0.46
1:B:75:TYR:HE1	5:B:854:HOH:O	1.99	0.46
1:B:455:GLN:HB3	1:B:474:LEU:HD12	1.97	0.46
1:A:350:VAL:HG12	1:A:553:TYR:CD1	2.52	0.45
1:A:379:ILE:C	1:A:379:ILE:HD12	2.38	0.45
1:B:186:ARG:HB2	1:B:222:ASP:OD1	2.17	0.45
1:B:493:LEU:C	1:B:493:LEU:CD1	2.82	0.44
1:B:24:ASN:HD22	1:B:24:ASN:H	1.65	0.44
1:A:284:ASP:N	1:A:284:ASP:OD1	2.50	0.44
1:A:315:TYR:O	1:A:321:LYS:HE2	2.17	0.44
1:B:569:TYR:CE2	1:B:599:HIS:CD2	3.06	0.43
1:B:59:CYS:O	1:B:63:THR:HG23	2.18	0.43
1:B:172:GLU:OE2	3:B:702:NAP:N6A	2.51	0.43
1:A:499:PHE:CE1	1:B:340:ASN:HB3	2.54	0.43
1:B:127:LEU:O	3:B:702:NAP:H1B	2.18	0.43
2:B:701:9RR:C24	3:B:702:NAP:C4N	2.97	0.43
1:A:335:ILE:CD1	1:A:514:LEU:HD13	2.49	0.43
1:A:506:ILE:HG13	1:B:354:PHE:CE2	2.54	0.43
1:B:167:SER:N	3:B:702:NAP:O2N	2.52	0.43
1:B:302:LYS:HB2	5:B:993:HOH:O	2.17	0.43
1:A:66:ASN:HD22	1:A:69:LYS:HE3	1.84	0.42
1:A:373:LYS:HE2	1:A:375:PHE:CE2	2.54	0.42
1:A:114:LYS:HE2	5:A:978:HOH:O	2.19	0.42
1:B:6:CYS:HB3	1:B:178:LEU:O	2.19	0.42
1:B:70:TYR:O	1:B:71:GLU:C	2.54	0.42
1:A:124:ASN:HB2	1:A:140:VAL:HG12	2.01	0.42
1:A:13:ALA:HB2	1:A:179:ILE:HD12	2.02	0.42
1:A:368:LEU:HD13	1:A:376:LEU:HD11	2.02	0.42
1:A:423:VAL:O	1:A:424:ASN:HB2	2.20	0.42
1:B:514:LEU:HD11	1:B:550:ALA:HB1	2.02	0.42
1:B:40:LEU:HD12	1:B:196:PHE:O	2.20	0.41
2:A:701:9RR:C24	3:A:702:NAP:C3N	2.98	0.41
1:A:289:ASP:HA	1:A:292:TYR:CD2	2.54	0.41
1:B:379:ILE:HD13	1:B:520:PHE:CD1	2.55	0.41
1:B:491:HIS:CE1	4:B:703:UMP:O4	2.73	0.41
1:A:506:ILE:HA	1:A:544:ILE:O	2.21	0.41

Continued on next page...

Continued from previous page...

Atom-1	Atom-2	Interatomic distance (Å)	Clash overlap (Å)
1:A:518:VAL:N	1:A:519:PRO:CD	2.83	0.41
1:B:531:MET:HE3	1:B:586:PHE:CD2	2.56	0.41
1:B:567:ILE:HA	1:B:568:PRO:HD3	1.98	0.41
1:B:368:LEU:HD13	1:B:376:LEU:HD11	2.02	0.41
2:B:701:9RR:C22	2:B:701:9RR:C18	2.99	0.41
1:A:109:TRP:CZ3	1:A:117:LYS:HG2	2.56	0.41
1:A:447:ASN:OD1	1:A:449:GLU:HB3	2.20	0.41
1:B:150:ILE:H	1:B:150:ILE:HG13	1.76	0.41
1:B:186:ARG:O	1:B:221:LEU:HA	2.21	0.41
1:A:456:LEU:O	1:A:459:ILE:HG13	2.20	0.41
1:B:473:LEU:HA	1:B:494:CYS:O	2.21	0.40
1:A:470:ARG:O	1:B:510:ARG:HD2	2.21	0.40

There are no symmetry-related clashes.

5.3 Torsion angles [i](#)

5.3.1 Protein backbone [i](#)

In the following table, the Percentiles column shows the percent Ramachandran outliers of the chain as a percentile score with respect to all X-ray entries followed by that with respect to entries of similar resolution.

The Analysed column shows the number of residues for which the backbone conformation was analysed, and the total number of residues.

Mol	Chain	Analysed	Favoured	Allowed	Outliers	Percentiles	
1	A	541/608 (89%)	513 (95%)	27 (5%)	1 (0%)	47	56
1	B	536/608 (88%)	501 (94%)	29 (5%)	6 (1%)	14	13
All	All	1077/1216 (89%)	1014 (94%)	56 (5%)	7 (1%)	25	27

All (7) Ramachandran outliers are listed below:

Mol	Chain	Res	Type
1	B	166	GLY
1	A	345	ARG
1	B	68	SER
1	B	300	GLU
1	B	26	GLY
1	B	309	PRO

Continued on next page...

Continued from previous page...

Mol	Chain	Res	Type
1	B	429	ILE

5.3.2 Protein sidechains [i](#)

In the following table, the Percentiles column shows the percent sidechain outliers of the chain as a percentile score with respect to all X-ray entries followed by that with respect to entries of similar resolution.

The Analysed column shows the number of residues for which the sidechain conformation was analysed, and the total number of residues.

Mol	Chain	Analysed	Rotameric	Outliers	Percentiles	
1	A	510/570 (90%)	487 (96%)	23 (4%)	27	33
1	B	505/570 (89%)	476 (94%)	29 (6%)	20	22
All	All	1015/1140 (89%)	963 (95%)	52 (5%)	24	27

All (52) residues with a non-rotameric sidechain are listed below:

Mol	Chain	Res	Type
1	A	2	MET
1	A	50	CYS
1	A	67	GLU
1	A	97	LYS
1	A	145	LYS
1	A	175	GLU
1	A	177	LYS
1	A	192	GLU
1	A	283	ASP
1	A	298	GLU
1	A	301	GLU
1	A	304	LYS
1	A	307	ILE
1	A	341	LYS
1	A	344	ASP
1	A	346	THR
1	A	375	PHE
1	A	449	GLU
1	A	487	LEU
1	A	514	LEU
1	A	559	SER
1	A	600	GLU

Continued on next page...

Continued from previous page...

Mol	Chain	Res	Type
1	A	603	SER
1	B	2	MET
1	B	23	LYS
1	B	24	ASN
1	B	27	LYS
1	B	30	GLU
1	B	45	VAL
1	B	50	CYS
1	B	51	ASN
1	B	72	LYS
1	B	79	LYS
1	B	114	LYS
1	B	148	ASP
1	B	189	SER
1	B	194	ASP
1	B	195	VAL
1	B	206	GLN
1	B	283	ASP
1	B	304	LYS
1	B	306	SER
1	B	341	LYS
1	B	348	VAL
1	B	379	ILE
1	B	478	ASN
1	B	487	LEU
1	B	514	LEU
1	B	516	LEU
1	B	582	ASN
1	B	584	GLU
1	B	601	LYS

Sometimes sidechains can be flipped to improve hydrogen bonding and reduce clashes. All (16) such sidechains are listed below:

Mol	Chain	Res	Type
1	A	42	ASN
1	A	201	ASN
1	A	450	ASN
1	B	24	ASN
1	B	51	ASN
1	B	171	GLN
1	B	218	ASN
1	B	294	ASN

Continued on next page...

Continued from previous page...

Mol	Chain	Res	Type
1	B	303	ASN
1	B	308	HIS
1	B	327	GLN
1	B	407	ASN
1	B	478	ASN
1	B	530	HIS
1	B	554	ASN
1	B	582	ASN

5.3.3 RNA [i](#)

There are no RNA molecules in this entry.

5.4 Non-standard residues in protein, DNA, RNA chains [i](#)

There are no non-standard protein/DNA/RNA residues in this entry.

5.5 Carbohydrates [i](#)

There are no monosaccharides in this entry.

5.6 Ligand geometry [i](#)

6 ligands are modelled in this entry.

In the following table, the Counts columns list the number of bonds (or angles) for which Mogul statistics could be retrieved, the number of bonds (or angles) that are observed in the model and the number of bonds (or angles) that are defined in the Chemical Component Dictionary. The Link column lists molecule types, if any, to which the group is linked. The Z score for a bond length (or angle) is the number of standard deviations the observed value is removed from the expected value. A bond length (or angle) with $|Z| > 2$ is considered an outlier worth inspection. RMSZ is the root-mean-square of all Z scores of the bond lengths (or angles).

Mol	Type	Chain	Res	Link	Bond lengths			Bond angles		
					Counts	RMSZ	# Z > 2	Counts	RMSZ	# Z > 2
2	9RR	B	701	-	40,40,40	1.70	9 (22%)	55,55,55	3.03	19 (34%)
2	9RR	A	701	-	40,40,40	1.43	7 (17%)	55,55,55	2.50	16 (29%)
4	UMP	A	703	-	21,21,21	1.59	4 (19%)	31,31,31	1.83	6 (19%)
3	NAP	B	702	-	45,52,52	1.03	3 (6%)	56,80,80	1.23	7 (12%)
4	UMP	B	703	-	21,21,21	1.36	4 (19%)	31,31,31	1.72	7 (22%)

Mol	Type	Chain	Res	Link	Bond lengths			Bond angles		
					Counts	RMSZ	# Z > 2	Counts	RMSZ	# Z > 2
3	NAP	A	702	-	45,52,52	1.37	5 (11%)	56,80,80	1.65	11 (19%)

In the following table, the Chirals column lists the number of chiral outliers, the number of chiral centers analysed, the number of these observed in the model and the number defined in the Chemical Component Dictionary. Similar counts are reported in the Torsion and Rings columns. '-' means no outliers of that kind were identified.

Mol	Type	Chain	Res	Link	Chirals	Torsions	Rings
2	9RR	B	701	-	-	5/20/20/20	0/4/4/4
2	9RR	A	701	-	-	3/20/20/20	0/4/4/4
4	UMP	A	703	-	-	1/10/22/22	0/2/2/2
3	NAP	B	702	-	-	13/31/67/67	0/5/5/5
4	UMP	B	703	-	-	1/10/22/22	0/2/2/2
3	NAP	A	702	-	-	8/31/67/67	0/5/5/5

All (32) bond length outliers are listed below:

Mol	Chain	Res	Type	Atoms	Z	Observed(Å)	Ideal(Å)
3	A	702	NAP	C3N-C7N	5.42	1.58	1.50
2	B	701	9RR	C5-C6	4.82	1.51	1.40
4	A	703	UMP	C2-N3	-4.52	1.29	1.38
2	A	701	9RR	C28-C33	4.38	1.50	1.40
2	B	701	9RR	C5-C4	4.10	1.52	1.43
4	B	703	UMP	C2-N3	-3.02	1.32	1.38
2	B	701	9RR	C28-C29	2.96	1.50	1.43
4	A	703	UMP	C4-N3	-2.88	1.33	1.38
2	A	701	9RR	C5-C6	2.83	1.47	1.40
2	A	701	9RR	C5-C4	2.79	1.49	1.43
3	B	702	NAP	P2B-O2B	2.76	1.64	1.59
3	B	702	NAP	C5A-C4A	2.74	1.48	1.40
2	B	701	9RR	C2-N1	2.73	1.40	1.35
2	B	701	9RR	C28-C33	2.66	1.46	1.40
2	B	701	9RR	C6-N1	2.60	1.38	1.34
3	B	702	NAP	O4D-C1D	2.47	1.44	1.41
2	A	701	9RR	C28-C29	2.45	1.48	1.43
2	A	701	9RR	C33-N32	2.44	1.38	1.34
4	A	703	UMP	C5-C4	-2.42	1.38	1.43
2	A	701	9RR	C29-N30	2.41	1.38	1.35
2	B	701	9RR	C4-N3	2.34	1.38	1.35
4	B	703	UMP	O4'-C4'	-2.27	1.39	1.45
3	A	702	NAP	O4D-C1D	2.23	1.44	1.41

Continued on next page...

Continued from previous page...

Mol	Chain	Res	Type	Atoms	Z	Observed(Å)	Ideal(Å)
4	A	703	UMP	C2-N1	2.18	1.41	1.38
3	A	702	NAP	C5A-C4A	2.18	1.46	1.40
2	A	701	9RR	C13-C14	2.17	1.43	1.38
4	B	703	UMP	C5-C4	-2.14	1.38	1.43
4	B	703	UMP	O4-C4	2.06	1.28	1.24
3	A	702	NAP	C2N-C3N	2.06	1.42	1.39
3	A	702	NAP	C2N-N1N	2.06	1.37	1.35
2	B	701	9RR	C2-N3	2.04	1.39	1.35
2	B	701	9RR	C9-C6	2.01	1.54	1.51

All (66) bond angle outliers are listed below:

Mol	Chain	Res	Type	Atoms	Z	Observed(°)	Ideal(°)
2	B	701	9RR	C5-C4-N3	-9.59	117.13	122.52
2	B	701	9RR	C31-N32-C33	8.84	123.61	116.24
2	A	701	9RR	C31-N32-C33	7.59	122.57	116.24
2	A	701	9RR	C2-N1-C6	7.51	122.50	116.24
2	B	701	9RR	C11-C5-C6	-6.85	117.91	123.46
2	B	701	9RR	C2-N1-C6	6.78	121.89	116.24
2	A	701	9RR	C9-C6-C5	-5.56	118.71	122.57
2	B	701	9RR	C28-C33-N32	-5.54	116.79	123.61
2	B	701	9RR	C5-C6-N1	-5.20	117.21	123.61
2	B	701	9RR	C2-N3-C4	4.77	122.26	116.99
2	A	701	9RR	C5-C6-N1	-4.64	117.89	123.61
2	B	701	9RR	C28-C29-N30	-4.49	120.00	122.52
2	A	701	9RR	C11-C5-C6	-4.36	119.93	123.46
3	A	702	NAP	C3N-C2N-N1N	4.34	124.67	120.43
2	A	701	9RR	C28-C29-N30	-4.27	120.12	122.52
2	A	701	9RR	C28-C33-N32	-4.22	118.41	123.61
4	A	703	UMP	C5-C4-N3	4.16	121.06	114.84
4	A	703	UMP	O4-C4-C5	-4.15	117.86	125.16
4	B	703	UMP	C4-N3-C2	-3.79	121.58	126.58
3	B	702	NAP	N3A-C2A-N1A	-3.77	122.79	128.68
4	B	703	UMP	O4-C4-C5	-3.72	118.61	125.16
2	B	701	9RR	C34-C33-C28	-3.71	120.00	122.57
3	A	702	NAP	C2N-C3N-C4N	-3.69	114.08	118.26
3	A	702	NAP	C4A-C5A-N7A	-3.62	105.62	109.40
2	A	701	9RR	C18-O17-C14	3.58	127.30	117.93
2	B	701	9RR	C4-C5-C6	3.50	118.80	115.91
4	A	703	UMP	N3-C2-N1	3.41	119.41	114.89
4	B	703	UMP	C5-C4-N3	3.39	119.91	114.84
3	A	702	NAP	O3X-P2B-O2X	3.36	120.46	107.64

Continued on next page...

Continued from previous page...

Mol	Chain	Res	Type	Atoms	Z	Observed(°)	Ideal(°)
2	A	701	9RR	C31-N30-C29	3.32	120.65	116.99
2	B	701	9RR	N36-C29-N30	3.31	121.72	117.03
4	B	703	UMP	N3-C2-N1	3.31	119.28	114.89
3	A	702	NAP	C1B-N9A-C4A	-3.20	121.02	126.64
2	A	701	9RR	C9-C6-N1	3.08	123.39	116.66
3	A	702	NAP	O7N-C7N-N7N	-3.03	118.27	122.58
3	B	702	NAP	C3N-C2N-N1N	3.03	123.39	120.43
4	A	703	UMP	OP3-P-OP2	3.02	119.17	107.64
2	B	701	9RR	C34-C33-N32	2.96	123.15	116.66
2	B	701	9RR	C25-C28-C29	-2.94	116.16	120.42
3	A	702	NAP	N3A-C2A-N1A	-2.93	124.10	128.68
3	A	702	NAP	O2A-PA-O1A	2.87	126.41	112.24
4	A	703	UMP	C4-N3-C2	-2.82	122.86	126.58
4	B	703	UMP	C2'-C1'-N1	2.77	120.16	113.77
2	B	701	9RR	C29-C28-C33	2.75	118.18	115.91
2	A	701	9RR	C34-C33-C28	-2.75	120.67	122.57
3	B	702	NAP	C3N-C7N-N7N	2.72	121.02	117.75
2	B	701	9RR	C25-C28-C33	2.72	125.66	123.46
4	B	703	UMP	C1'-N1-C2	2.62	122.81	117.64
2	A	701	9RR	C11-C5-C4	2.54	124.11	120.42
3	B	702	NAP	C6N-N1N-C2N	-2.48	119.71	121.97
2	B	701	9RR	C9-C6-C5	-2.46	120.87	122.57
2	A	701	9RR	C24-C23-C22	2.43	122.71	119.73
2	A	701	9RR	C35-C34-C33	-2.40	108.97	114.88
2	B	701	9RR	C9-C6-N1	2.35	121.80	116.66
2	B	701	9RR	N37-C31-N32	2.34	120.90	117.25
2	A	701	9RR	C25-C28-C33	-2.30	121.60	123.46
3	A	702	NAP	O2B-C2B-C1B	-2.29	101.85	110.10
2	A	701	9RR	C10-C9-C6	-2.26	109.29	114.88
4	B	703	UMP	C1'-N1-C6	-2.23	117.14	121.55
3	B	702	NAP	O2A-PA-O1A	2.22	123.22	112.24
4	A	703	UMP	OP3-P-O5'	-2.18	100.92	106.73
3	A	702	NAP	O7N-C7N-C3N	2.12	122.16	119.63
3	B	702	NAP	C2A-N1A-C6A	2.08	122.31	118.75
3	B	702	NAP	C1B-N9A-C4A	-2.05	123.03	126.64
3	A	702	NAP	C2A-N1A-C6A	2.04	122.24	118.75
2	B	701	9RR	C20-O21-C22	2.01	123.17	117.93

There are no chirality outliers.

All (31) torsion outliers are listed below:

Mol	Chain	Res	Type	Atoms
3	A	702	NAP	C5B-O5B-PA-O1A
3	A	702	NAP	O4D-C1D-N1N-C2N
3	A	702	NAP	O4D-C1D-N1N-C6N
3	A	702	NAP	C2D-C1D-N1N-C2N
3	B	702	NAP	C5B-O5B-PA-O1A
3	B	702	NAP	PN-O3-PA-O5B
3	B	702	NAP	C3B-C4B-C5B-O5B
3	B	702	NAP	O4D-C1D-N1N-C2N
3	B	702	NAP	O4D-C1D-N1N-C6N
3	B	702	NAP	C2D-C1D-N1N-C2N
3	B	702	NAP	C2D-C1D-N1N-C6N
3	A	702	NAP	C3B-C4B-C5B-O5B
2	B	701	9RR	O17-C18-C19-C20
2	B	701	9RR	C23-C22-O21-C20
2	B	701	9RR	C27-C22-O21-C20
2	B	701	9RR	C15-C14-O17-C18
2	B	701	9RR	C13-C14-O17-C18
3	A	702	NAP	O4B-C4B-C5B-O5B
3	B	702	NAP	O4B-C4B-C5B-O5B
2	A	701	9RR	C19-C18-O17-C14
2	A	701	9RR	C19-C20-O21-C22
3	A	702	NAP	C5B-O5B-PA-O3
3	B	702	NAP	C4B-C5B-O5B-PA
3	A	702	NAP	C5B-O5B-PA-O2A
3	B	702	NAP	C5B-O5B-PA-O2A
2	A	701	9RR	C18-C19-C20-O21
3	B	702	NAP	C5B-O5B-PA-O3
3	B	702	NAP	C2B-O2B-P2B-O3X
4	A	703	UMP	O4'-C4'-C5'-O5'
3	B	702	NAP	C5D-O5D-PN-O1N
4	B	703	UMP	O4'-C4'-C5'-O5'

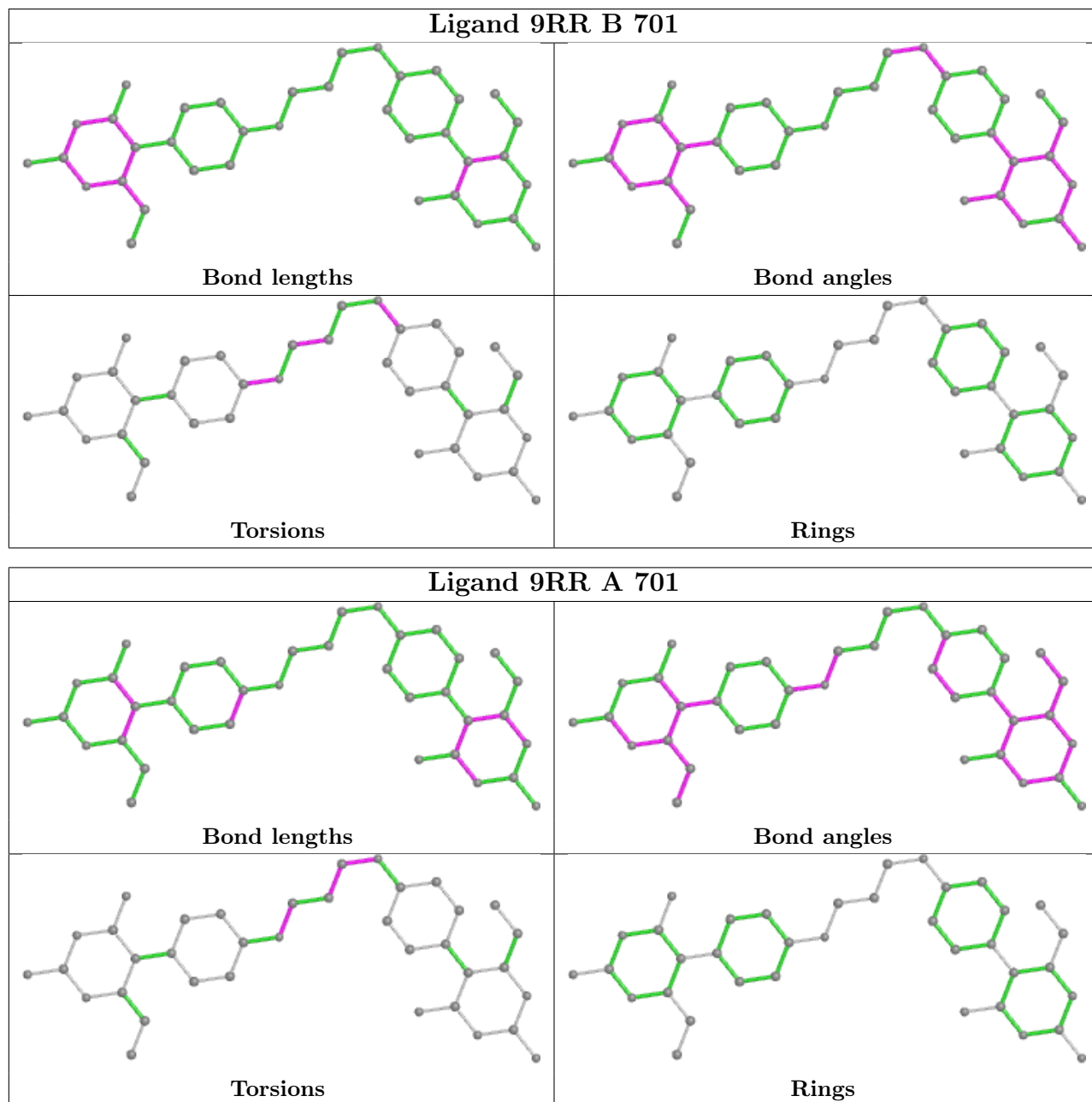
There are no ring outliers.

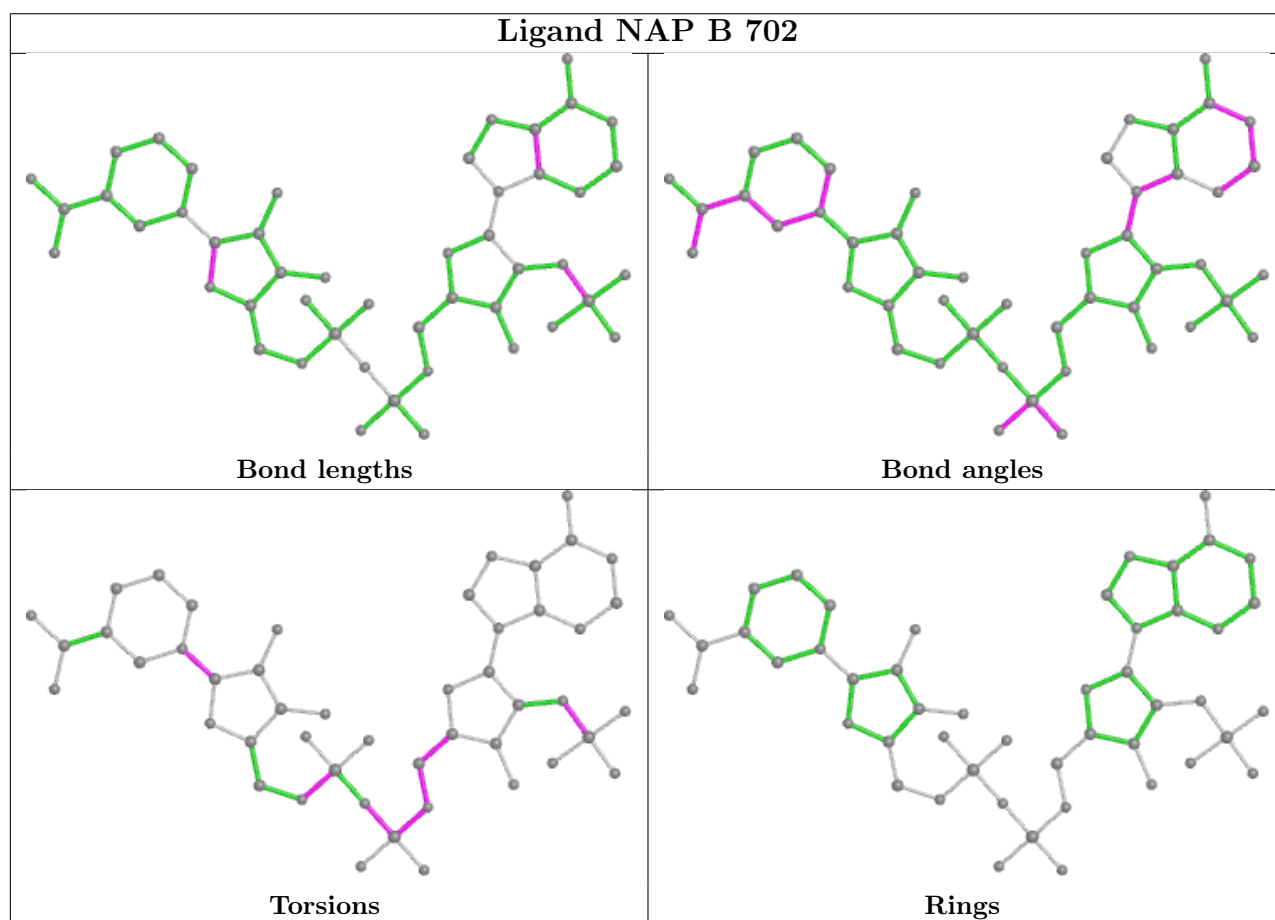
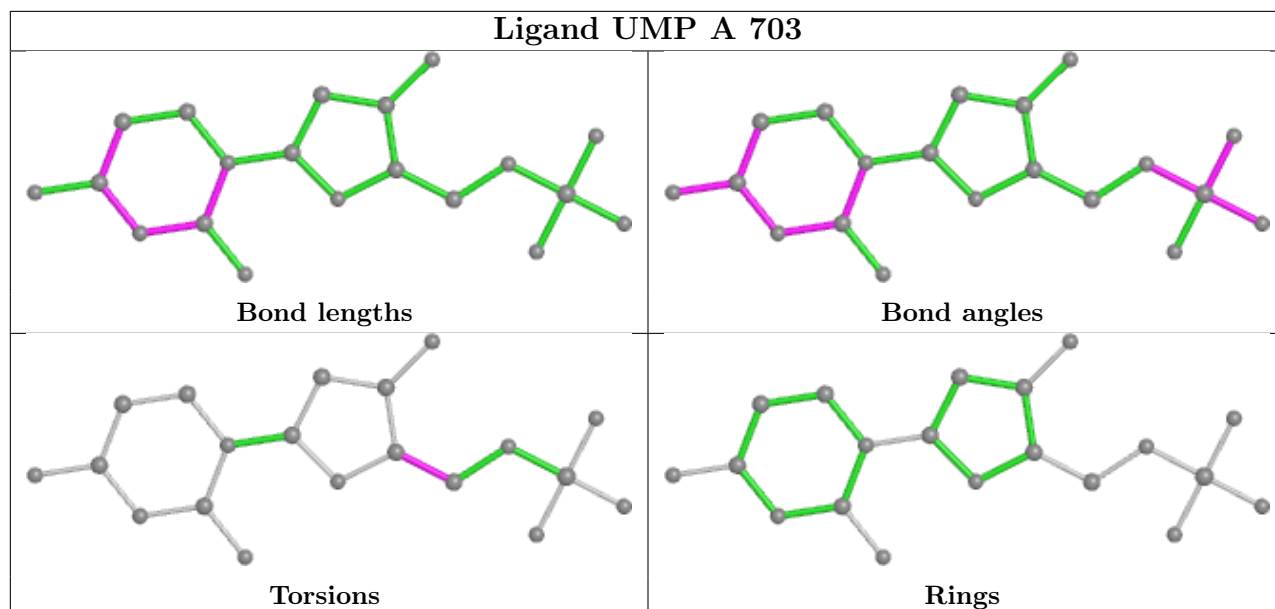
5 monomers are involved in 13 short contacts:

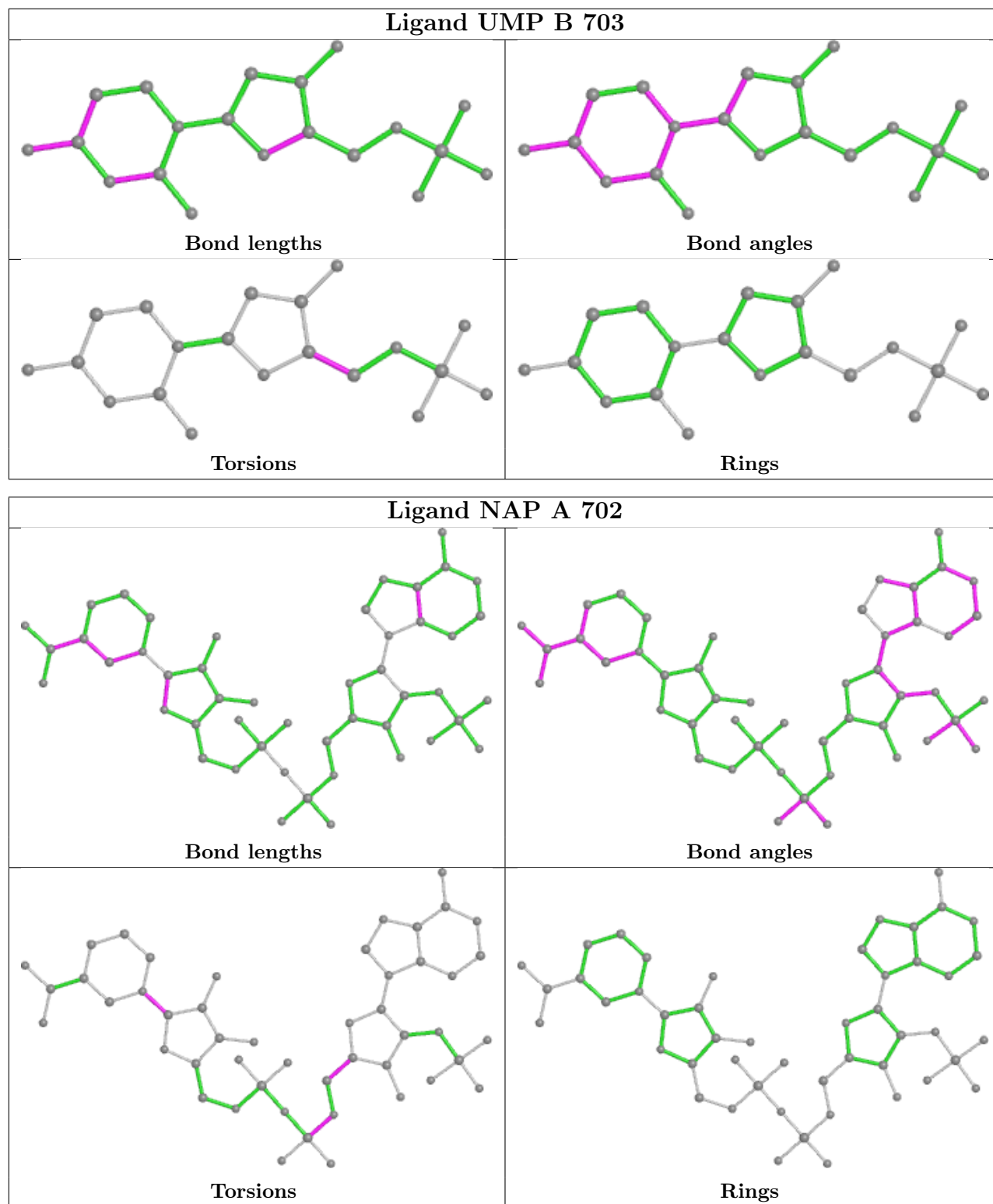
Mol	Chain	Res	Type	Clashes	Symm-Clashes
2	B	701	9RR	4	0
2	A	701	9RR	2	0
3	B	702	NAP	6	0
4	B	703	UMP	1	0
3	A	702	NAP	4	0

The following is a two-dimensional graphical depiction of Mogul quality analysis of bond lengths,

bond angles, torsion angles, and ring geometry for all instances of the Ligand of Interest. In addition, ligands with molecular weight > 250 and outliers as shown on the validation Tables will also be included. For torsion angles, if less than 5% of the Mogul distribution of torsion angles is within 10 degrees of the torsion angle in question, then that torsion angle is considered an outlier. Any bond that is central to one or more torsion angles identified as an outlier by Mogul will be highlighted in the graph. For rings, the root-mean-square deviation (RMSD) between the ring in question and similar rings identified by Mogul is calculated over all ring torsion angles. If the average RMSD is greater than 60 degrees and the minimal RMSD between the ring in question and any Mogul-identified rings is also greater than 60 degrees, then that ring is considered an outlier. The outliers are highlighted in purple. The color gray indicates Mogul did not find sufficient equivalents in the CSD to analyse the geometry.







5.7 Other polymers [\(i\)](#)

There are no such residues in this entry.

5.8 Polymer linkage issues

There are no chain breaks in this entry.

6 Fit of model and data

6.1 Protein, DNA and RNA chains

In the following table, the column labelled ‘#RSRZ > 2’ contains the number (and percentage) of RSRZ outliers, followed by percent RSRZ outliers for the chain as percentile scores relative to all X-ray entries and entries of similar resolution. The OWAB column contains the minimum, median, 95th percentile and maximum values of the occupancy-weighted average B-factor per residue. The column labelled ‘Q < 0.9’ lists the number of (and percentage) of residues with an average occupancy less than 0.9.

Mol	Chain	Analysed	<RSRZ>	#RSRZ>2	OWAB(Å ²)	Q<0.9
1	A	547/608 (89%)	0.10	38 (6%) 16 24	7, 20, 86, 157	0
1	B	542/608 (89%)	0.54	74 (13%) 3 4	6, 32, 112, 169	0
All	All	1089/1216 (89%)	0.32	112 (10%) 6 10	6, 24, 106, 169	0

All (112) RSRZ outliers are listed below:

Mol	Chain	Res	Type	RSRZ
1	B	1	MET	13.4
1	B	2	MET	11.8
1	A	26	GLY	11.1
1	B	607	ALA	11.0
1	B	26	GLY	10.5
1	A	1	MET	10.1
1	A	2	MET	9.8
1	B	608	ALA	9.6
1	A	305	ASN	7.5
1	A	25	GLU	7.3
1	B	25	GLU	7.1
1	B	174	LEU	6.4
1	B	28	LYS	6.2
1	B	75	TYR	5.7
1	A	27	LYS	5.7
1	B	137	ASP	5.6
1	A	299	LYS	5.5
1	A	28	LYS	5.5
1	A	24	ASN	5.3
1	B	24	ASN	5.3
1	B	14	ILE	5.3
1	A	607	ALA	5.2
1	B	130	THR	5.2
1	A	300	GLU	5.2

Continued on next page...

Continued from previous page...

Mol	Chain	Res	Type	RSRZ
1	A	231	ASN	5.1
1	A	608	ALA	4.8
1	B	3	GLU	4.8
1	B	299	LYS	4.7
1	B	175	GLU	4.6
1	B	135	ASP	4.6
1	A	284	ASP	4.5
1	A	230	ASN	4.5
1	B	305	ASN	4.5
1	B	131	LEU	4.4
1	B	136	PHE	4.4
1	B	134	GLU	4.3
1	B	138	GLU	4.2
1	B	231	ASN	4.2
1	B	13	ALA	4.1
1	B	44	GLY	3.9
1	B	230	ASN	3.8
1	A	85	THR	3.8
1	B	116	PHE	3.7
1	B	307	ILE	3.7
1	B	304	LYS	3.6
1	B	603	SER	3.6
1	B	283	ASP	3.6
1	B	301	GLU	3.5
1	B	300	GLU	3.5
1	B	192	GLU	3.5
1	A	23	LYS	3.4
1	A	301	GLU	3.4
1	B	155	LYS	3.4
1	A	306	SER	3.4
1	B	606	MET	3.4
1	A	29	ASN	3.3
1	B	128	SER	3.3
1	A	304	LYS	3.3
1	A	285	GLU	3.3
1	B	309	PRO	3.3
1	B	111	SER	3.2
1	A	605	ASP	3.2
1	A	14	ILE	3.2
1	B	151	VAL	3.2
1	A	82	ASN	3.2
1	B	29	ASN	3.2

Continued on next page...

Continued from previous page...

Mol	Chain	Res	Type	RSRZ
1	B	202	GLU	3.1
1	B	81	LEU	3.1
1	B	43	LYS	3.1
1	A	298	GLU	3.0
1	B	35	TYR	3.0
1	B	346	THR	3.0
1	A	307	ILE	3.0
1	A	75	TYR	2.9
1	B	110	GLU	2.9
1	B	23	LYS	2.9
1	B	80	TYR	2.9
1	B	146	VAL	2.8
1	A	96	LYS	2.8
1	B	203	ASN	2.7
1	B	42	ASN	2.7
1	A	310	ASN	2.7
1	A	287	GLU	2.6
1	B	45	VAL	2.6
1	A	84	GLU	2.6
1	B	132	LYS	2.6
1	B	15	CYS	2.5
1	B	157	ASN	2.5
1	B	139	ASP	2.5
1	B	142	ILE	2.5
1	B	140	VAL	2.5
1	A	283	ASP	2.4
1	B	144	ASN	2.4
1	B	78	CYS	2.4
1	B	184	PHE	2.4
1	B	298	GLU	2.4
1	B	68	SER	2.3
1	B	71	GLU	2.3
1	B	9	PHE	2.3
1	A	606	MET	2.3
1	B	117	LYS	2.3
1	B	76	LYS	2.3
1	B	4	GLN	2.2
1	A	3	GLU	2.2
1	B	204	GLU	2.2
1	B	306	SER	2.2
1	B	114	LYS	2.1
1	B	97	LYS	2.1

Continued on next page...

Continued from previous page...

Mol	Chain	Res	Type	RSRZ
1	A	22	SER	2.1
1	A	297	LYS	2.1
1	A	49	LYS	2.0
1	B	320	TYR	2.0

6.2 Non-standard residues in protein, DNA, RNA chains [i](#)

There are no non-standard protein/DNA/RNA residues in this entry.

6.3 Carbohydrates [i](#)

There are no monosaccharides in this entry.

6.4 Ligands [i](#)

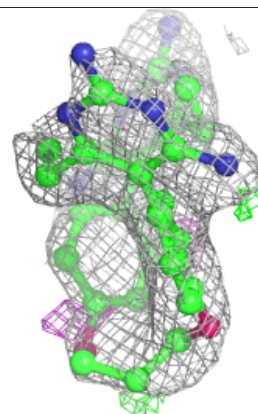
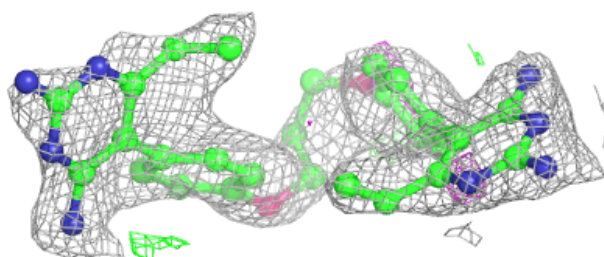
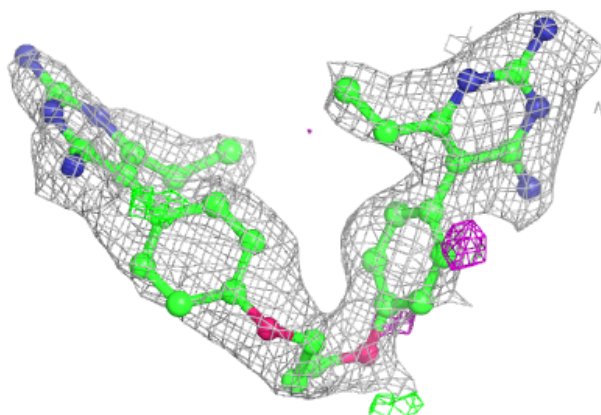
In the following table, the Atoms column lists the number of modelled atoms in the group and the number defined in the chemical component dictionary. The B-factors column lists the minimum, median, 95th percentile and maximum values of B factors of atoms in the group. The column labelled 'Q< 0.9' lists the number of atoms with occupancy less than 0.9.

Mol	Type	Chain	Res	Atoms	RSCC	RSR	B-factors(Å ²)	Q<0.9
2	9RR	B	701	37/37	0.79	0.25	30,47,53,55	0
3	NAP	B	702	48/48	0.86	0.21	58,88,101,108	0
2	9RR	A	701	37/37	0.89	0.18	9,24,32,39	0
3	NAP	A	702	48/48	0.97	0.10	18,33,40,44	0
4	UMP	A	703	20/20	0.98	0.07	11,12,14,14	0
4	UMP	B	703	20/20	0.98	0.09	14,17,19,20	0

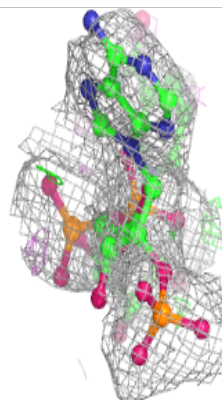
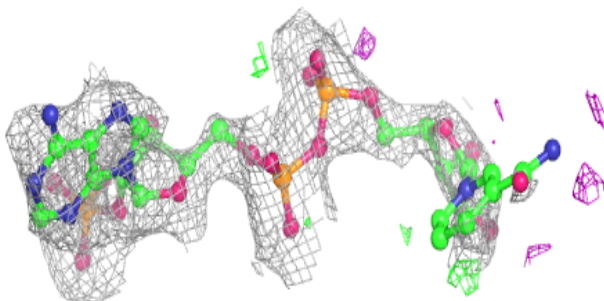
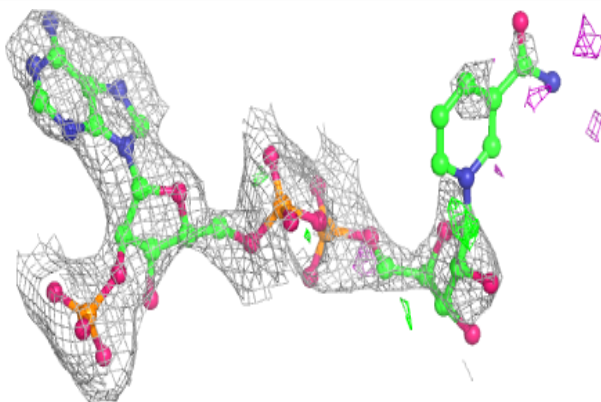
The following is a graphical depiction of the model fit to experimental electron density of all instances of the Ligand of Interest. In addition, ligands with molecular weight > 250 and outliers as shown on the geometry validation Tables will also be included. Each fit is shown from different orientation to approximate a three-dimensional view.

Electron density around 9RR B 701:

$2mF_o-DF_c$ (at 0.7 rmsd) in gray
 mF_o-DF_c (at 3 rmsd) in purple (negative)
and green (positive)

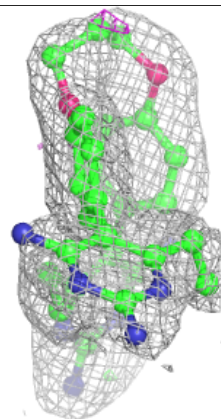
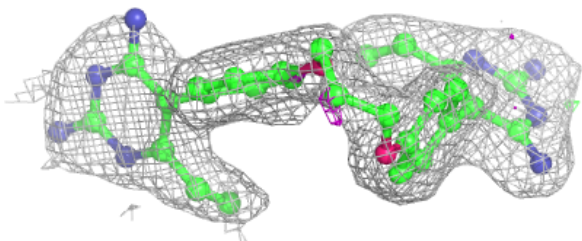
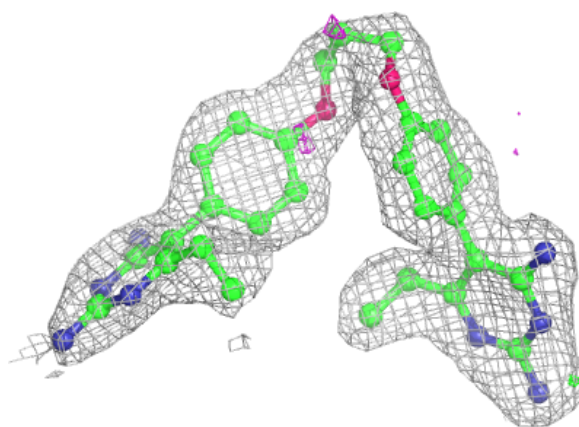
**Electron density around NAP B 702:**

$2mF_o-DF_c$ (at 0.7 rmsd) in gray
 mF_o-DF_c (at 3 rmsd) in purple (negative)
and green (positive)

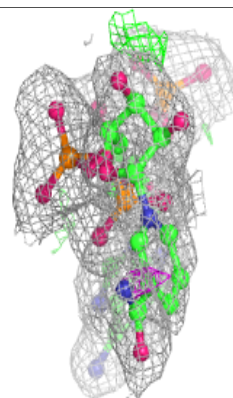
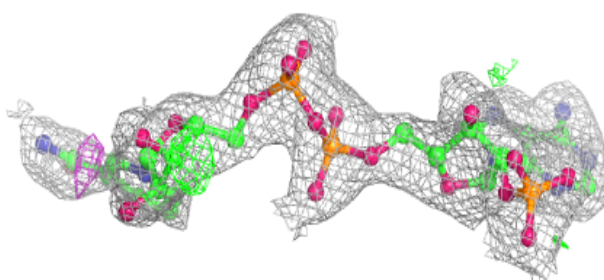
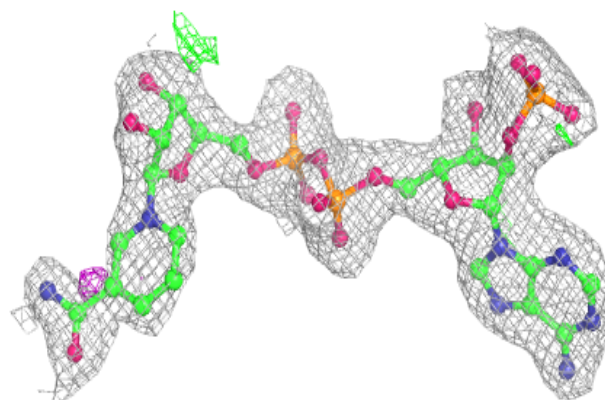


Electron density around 9RR A 701:

$2mF_o-DF_c$ (at 0.7 rmsd) in gray
 mF_o-DF_c (at 3 rmsd) in purple (negative)
and green (positive)

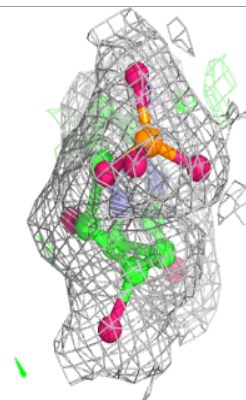
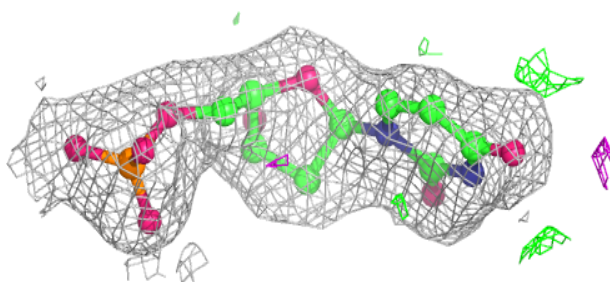
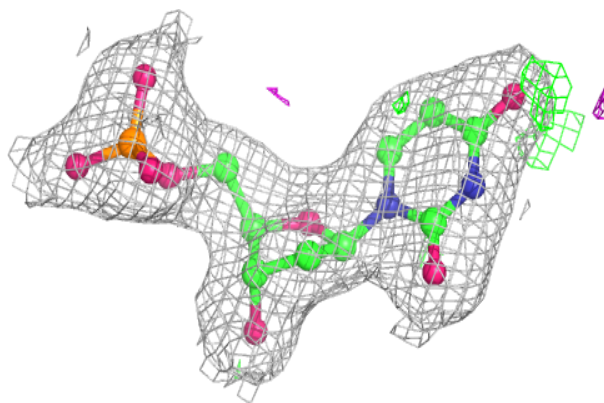
**Electron density around NAP A 702:**

$2mF_o-DF_c$ (at 0.7 rmsd) in gray
 mF_o-DF_c (at 3 rmsd) in purple (negative)
and green (positive)

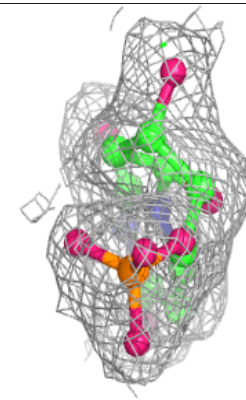
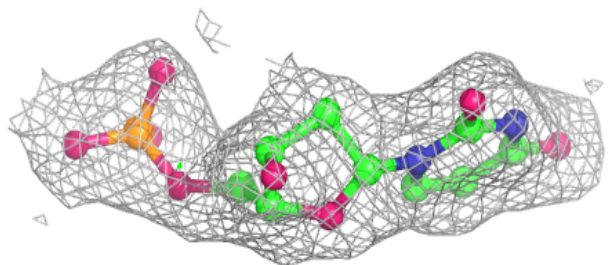
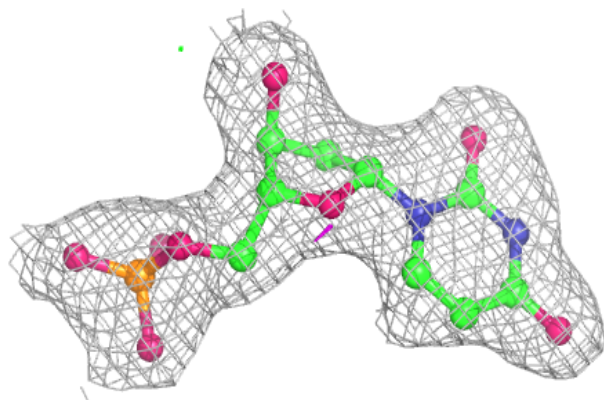


Electron density around UMP A 703:

$2mF_o-DF_c$ (at 0.7 rmsd) in gray
 mF_o-DF_c (at 3 rmsd) in purple (negative)
and green (positive)

**Electron density around UMP B 703:**

$2mF_o-DF_c$ (at 0.7 rmsd) in gray
 mF_o-DF_c (at 3 rmsd) in purple (negative)
and green (positive)



6.5 Other polymers [i](#)

There are no such residues in this entry.