



Full wwPDB X-ray Structure Validation Report ⓘ

Sep 25, 2023 – 07:21 AM EDT

PDB ID : 5WJ1
Title : Crystal structure of Arabidopsis thaliana acetohydroxyacid synthase in complex with a triazolopyrimidine herbicide, penoxsulam
Authors : Garcia, M.D.; Lonhienne, T.; Guddat, L.W.
Deposited on : 2017-07-21
Resolution : 2.52 Å(reported)

This is a Full wwPDB X-ray Structure Validation Report for a publicly released PDB entry.

We welcome your comments at validation@mail.wwpdb.org

A user guide is available at

<https://www.wwpdb.org/validation/2017/XrayValidationReportHelp>

with specific help available everywhere you see the ⓘ symbol.

The types of validation reports are described at

<http://www.wwpdb.org/validation/2017/FAQs#types>.

The following versions of software and data (see [references ⓘ](#)) were used in the production of this report:

MolProbity : 4.02b-467
Mogul : 1.8.5 (274361), CSD as541be (2020)
Xtriage (Phenix) : 1.13
EDS : 2.35.1
buster-report : 1.1.7 (2018)
Percentile statistics : 20191225.v01 (using entries in the PDB archive December 25th 2019)
Refmac : 5.8.0158
CCP4 : 7.0.044 (Gargrove)
Ideal geometry (proteins) : Engh & Huber (2001)
Ideal geometry (DNA, RNA) : Parkinson et al. (1996)
Validation Pipeline (wwPDB-VP) : 2.35.1

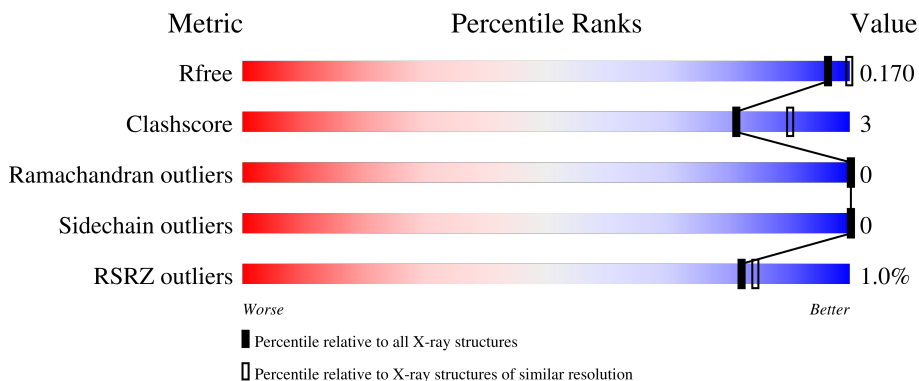
1 Overall quality at a glance

The following experimental techniques were used to determine the structure:

X-RAY DIFFRACTION

The reported resolution of this entry is 2.52 Å.

Percentile scores (ranging between 0-100) for global validation metrics of the entry are shown in the following graphic. The table shows the number of entries on which the scores are based.



Metric	Whole archive (#Entries)	Similar resolution (#Entries, resolution range(Å))
R_{free}	130704	5743 (2.54-2.50)
Clashscore	141614	6463 (2.54-2.50)
Ramachandran outliers	138981	6335 (2.54-2.50)
Sidechain outliers	138945	6337 (2.54-2.50)
RSRZ outliers	127900	5630 (2.54-2.50)

The table below summarises the geometric issues observed across the polymeric chains and their fit to the electron density. The red, orange, yellow and green segments of the lower bar indicate the fraction of residues that contain outliers for ≥ 3 , 2, 1 and 0 types of geometric quality criteria respectively. A grey segment represents the fraction of residues that are not modelled. The numeric value for each fraction is indicated below the corresponding segment, with a dot representing fractions $\leq 5\%$. The upper red bar (where present) indicates the fraction of residues that have poor fit to the electron density. The numeric value is given above the bar.

Mol	Chain	Length	Quality of chain
1	A	590	 % 94% 5%

2 Entry composition

There are 8 unique types of molecules in this entry. The entry contains 5323 atoms, of which 0 are hydrogens and 0 are deuteriums.

In the tables below, the ZeroOcc column contains the number of atoms modelled with zero occupancy, the AltConf column contains the number of residues with at least one atom in alternate conformation and the Trace column contains the number of residues modelled with at most 2 atoms.

- Molecule 1 is a protein called Acetolactate synthase, chloroplastic.

Mol	Chain	Residues	Atoms					ZeroOcc	AltConf	Trace
			Total	C	N	O	S			
1	A	582	4500	2854	777	843	26	0	6	0

There are 8 discrepancies between the modelled and reference sequences:

Chain	Residue	Modelled	Actual	Comment	Reference
A	668	LEU	-	expression tag	UNP P17597
A	669	GLU	-	expression tag	UNP P17597
A	670	HIS	-	expression tag	UNP P17597
A	671	HIS	-	expression tag	UNP P17597
A	672	HIS	-	expression tag	UNP P17597
A	673	HIS	-	expression tag	UNP P17597
A	674	HIS	-	expression tag	UNP P17597
A	675	HIS	-	expression tag	UNP P17597

- Molecule 2 is MAGNESIUM ION (three-letter code: MG) (formula: Mg).

Mol	Chain	Residues	Atoms		ZeroOcc	AltConf
2	A	1	Total	Mg	0	0
			1	1		

- Molecule 3 is FLAVIN-ADENINE DINUCLEOTIDE (three-letter code: FAD) (formula: C₂₇H₃₃N₉O₁₅P₂).

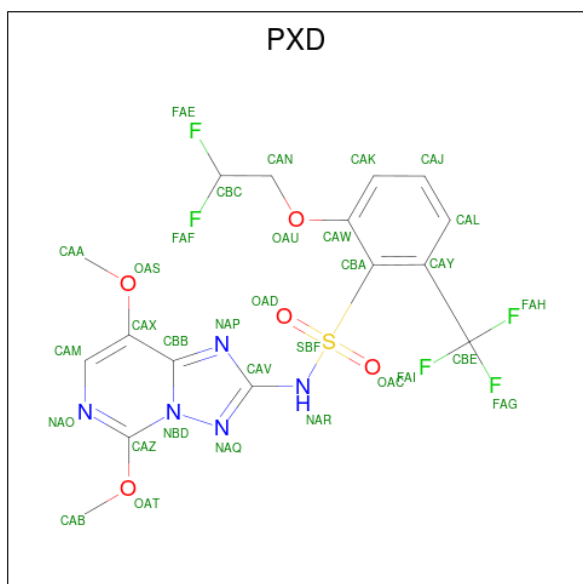


Mol	Chain	Residues	Atoms					ZeroOcc	AltConf
3	A	1	Total	C	N	O	P	0	0
			53	27	9	15	2		

- Molecule 4 is POTASSIUM ION (three-letter code: K) (formula: K).

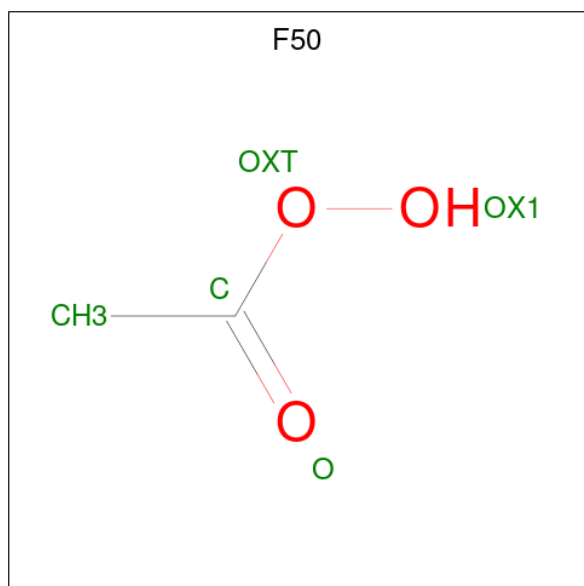
Mol	Chain	Residues	Atoms		ZeroOcc	AltConf
4	A	1	Total	K	0	0
			1	1		

- Molecule 5 is 2-(2,2-difluoroethoxy)-N-(5,8-dimethoxy[1,2,4]triazolo[1,5-c]pyrimidin-2-yl)-6-(trifluoromethyl)benzenesulfonamide (three-letter code: PXD) (formula: C₁₆H₁₄F₅N₅O₅S).



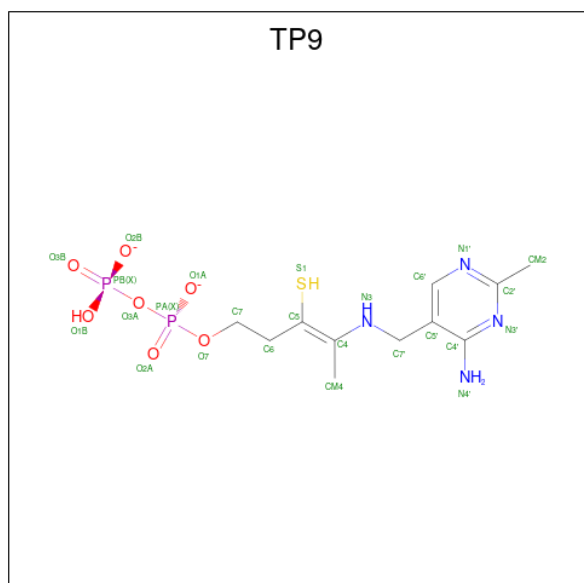
Mol	Chain	Residues	Atoms					ZeroOcc	AltConf	
			Total	C	F	N	O			S
5	A	1	64	32	10	10	10	2	0	1

- Molecule 6 is ETHANEPEROXOIC ACID (three-letter code: F50) (formula: C₂H₄O₃).



Mol	Chain	Residues	Atoms			ZeroOcc	AltConf
			Total	C	O		
6	A	1	5	2	3	0	0

- Molecule 7 is (3Z)-4-[[[(4-AMINO-2-METHYLPYRIMIDIN-5-YL)METHYL]AMINO]-3-MERCAPTOPENT-3-EN-1-YL TRIHYDROGEN DIPHOSPHATE (three-letter code: TP9) (formula: C₁₁H₁₈N₄O₇P₂S) (labeled as "Ligand of Interest" by depositor).



Mol	Chain	Residues	Atoms					ZeroOcc	AltConf	
			Total	C	N	O	P			S
7	A	1	25	11	4	7	2	1	0	0

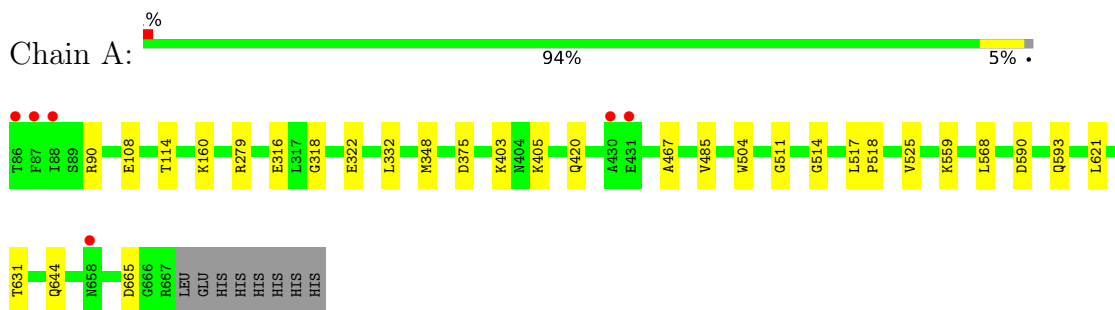
- Molecule 8 is water.

Mol	Chain	Residues	Atoms		ZeroOcc	AltConf
8	A	664	Total 674	O 674	0	10

3 Residue-property plots [i](#)

These plots are drawn for all protein, RNA, DNA and oligosaccharide chains in the entry. The first graphic for a chain summarises the proportions of the various outlier classes displayed in the second graphic. The second graphic shows the sequence view annotated by issues in geometry and electron density. Residues are color-coded according to the number of geometric quality criteria for which they contain at least one outlier: green = 0, yellow = 1, orange = 2 and red = 3 or more. A red dot above a residue indicates a poor fit to the electron density ($RSRZ > 2$). Stretches of 2 or more consecutive residues without any outlier are shown as a green connector. Residues present in the sample, but not in the model, are shown in grey.

- Molecule 1: Acetolactate synthase, chloroplastic



4 Data and refinement statistics

Property	Value	Source
Space group	P 64 2 2	Depositor
Cell constants a, b, c, α , β , γ	179.96Å 179.96Å 185.35Å 90.00° 90.00° 120.00°	Depositor
Resolution (Å)	44.42 – 2.52 44.42 – 2.52	Depositor EDS
% Data completeness (in resolution range)	99.2 (44.42-2.52) 99.2 (44.42-2.52)	Depositor EDS
R_{merge}	0.13	Depositor
R_{sym}	(Not available)	Depositor
$\langle I/\sigma(I) \rangle$ ¹	1.40 (at 2.51Å)	Xtrriage
Refinement program	PHENIX 1.9_1692	Depositor
R, R_{free}	0.140 , 0.165 0.145 , 0.170	Depositor DCC
R_{free} test set	1992 reflections (3.35%)	wwPDB-VP
Wilson B-factor (Å ²)	39.4	Xtrriage
Anisotropy	0.494	Xtrriage
Bulk solvent k_{sol} (e/Å ³), B_{sol} (Å ²)	0.34 , 64.9	EDS
L-test for twinning ²	$\langle L \rangle = 0.51$, $\langle L^2 \rangle = 0.35$	Xtrriage
Estimated twinning fraction	No twinning to report.	Xtrriage
F_o, F_c correlation	0.97	EDS
Total number of atoms	5323	wwPDB-VP
Average B, all atoms (Å ²)	43.0	wwPDB-VP

Xtrriage's analysis on translational NCS is as follows: *The largest off-origin peak in the Patterson function is 2.16% of the height of the origin peak. No significant pseudotranslation is detected.*

¹Intensities estimated from amplitudes.

²Theoretical values of $\langle |L| \rangle$, $\langle L^2 \rangle$ for acentric reflections are 0.5, 0.333 respectively for untwinned datasets, and 0.375, 0.2 for perfectly twinned datasets.

5 Model quality [i](#)

5.1 Standard geometry [i](#)

Bond lengths and bond angles in the following residue types are not validated in this section: MG, FAD, K, F50, PXD, TP9

The Z score for a bond length (or angle) is the number of standard deviations the observed value is removed from the expected value. A bond length (or angle) with $|Z| > 5$ is considered an outlier worth inspection. RMSZ is the root-mean-square of all Z scores of the bond lengths (or angles).

Mol	Chain	Bond lengths		Bond angles	
		RMSZ	# Z >5	RMSZ	# Z >5
1	A	0.22	0/4602	0.40	0/6245

There are no bond length outliers.

There are no bond angle outliers.

There are no chirality outliers.

There are no planarity outliers.

5.2 Too-close contacts [i](#)

In the following table, the Non-H and H(model) columns list the number of non-hydrogen atoms and hydrogen atoms in the chain respectively. The H(added) column lists the number of hydrogen atoms added and optimized by MolProbity. The Clashes column lists the number of clashes within the asymmetric unit, whereas Symm-Clashes lists symmetry-related clashes.

Mol	Chain	Non-H	H(model)	H(added)	Clashes	Symm-Clashes
1	A	4500	0	4495	20	0
2	A	1	0	0	0	0
3	A	53	0	30	2	0
4	A	1	0	0	0	0
5	A	64	0	0	2	0
6	A	5	0	4	0	0
7	A	25	0	17	1	0
8	A	674	0	0	8	0
All	All	5323	0	4546	24	0

The all-atom clashscore is defined as the number of clashes found per 1000 atoms (including hydrogen atoms). The all-atom clashscore for this structure is 3.

All (24) close contacts within the same asymmetric unit are listed below, sorted by their clash

magnitude.

Atom-1	Atom-2	Interatomic distance (Å)	Clash overlap (Å)
1:A:514:GLY:N	8:A:802:HOH:O	2.17	0.74
5:A:704[A]:PXD:FAG	5:A:704[A]:PXD:NAR	2.23	0.61
3:A:702:FAD:O4'	8:A:801:HOH:O	2.16	0.60
1:A:90:ARG:NH2	8:A:817:HOH:O	2.38	0.57
1:A:279:ARG:NH1	8:A:807:HOH:O	2.31	0.53
1:A:90:ARG:NH1	1:A:108:GLU:OE2	2.40	0.53
1:A:332:LEU:HD13	1:A:348:MET:HE1	1.92	0.51
1:A:318:GLY:O	1:A:322:GLU:HG3	2.11	0.50
1:A:467:ALA:HA	1:A:621:LEU:HD21	1.93	0.50
1:A:332:LEU:HD11	1:A:504:TRP:HZ2	1.79	0.48
1:A:375:ASP:HB3	8:A:801:HOH:O	2.15	0.47
1:A:403:LYS:NZ	8:A:828:HOH:O	2.46	0.47
1:A:160:LYS:NZ	8:A:823:HOH:O	2.42	0.47
1:A:568:LEU:HD22	7:A:706:TP9:H61	1.95	0.46
1:A:517:LEU:HB3	1:A:518:PRO:HD3	1.98	0.46
3:A:702:FAD:H1'1	3:A:702:FAD:H9	1.76	0.45
1:A:316:GLU:HG2	1:A:420:GLN:HG3	1.99	0.44
1:A:590:ASP:HB3	1:A:593:GLN:HG3	2.00	0.44
1:A:405:LYS:NZ	8:A:837:HOH:O	2.53	0.42
5:A:704[B]:PXD:FAG	5:A:704[B]:PXD:NAR	2.43	0.42
1:A:485:VAL:HG21	1:A:511:GLY:C	2.39	0.42
1:A:644:GLN:O	1:A:665:ASP:HB2	2.20	0.41
1:A:114:THR:HG21	1:A:525:VAL:HG11	2.01	0.41
1:A:559:LYS:NZ	1:A:631:THR:O	2.54	0.40

There are no symmetry-related clashes.

5.3 Torsion angles [i](#)

5.3.1 Protein backbone [i](#)

In the following table, the Percentiles column shows the percent Ramachandran outliers of the chain as a percentile score with respect to all X-ray entries followed by that with respect to entries of similar resolution.

The Analysed column shows the number of residues for which the backbone conformation was analysed, and the total number of residues.

Mol	Chain	Analysed	Favoured	Allowed	Outliers	Percentiles
1	A	586/590 (99%)	579 (99%)	7 (1%)	0	100 100

There are no Ramachandran outliers to report.

5.3.2 Protein sidechains [i](#)

In the following table, the Percentiles column shows the percent sidechain outliers of the chain as a percentile score with respect to all X-ray entries followed by that with respect to entries of similar resolution.

The Analysed column shows the number of residues for which the sidechain conformation was analysed, and the total number of residues.

Mol	Chain	Analysed	Rotameric	Outliers	Percentiles
1	A	484/487 (99%)	484 (100%)	0	100 100

There are no protein residues with a non-rotameric sidechain to report.

Sometimes sidechains can be flipped to improve hydrogen bonding and reduce clashes. There are no such sidechains identified.

5.3.3 RNA [i](#)

There are no RNA molecules in this entry.

5.4 Non-standard residues in protein, DNA, RNA chains [i](#)

There are no non-standard protein/DNA/RNA residues in this entry.

5.5 Carbohydrates [i](#)

There are no monosaccharides in this entry.

5.6 Ligand geometry [i](#)

Of 7 ligands modelled in this entry, 2 are monoatomic - leaving 5 for Mogul analysis.

In the following table, the Counts columns list the number of bonds (or angles) for which Mogul statistics could be retrieved, the number of bonds (or angles) that are observed in the model and the number of bonds (or angles) that are defined in the Chemical Component Dictionary. The Link column lists molecule types, if any, to which the group is linked. The Z score for a bond length (or angle) is the number of standard deviations the observed value is removed from the expected value. A bond length (or angle) with $|Z| > 2$ is considered an outlier worth inspection. RMSZ is the root-mean-square of all Z scores of the bond lengths (or angles).

Mol	Type	Chain	Res	Link	Bond lengths			Bond angles		
					Counts	RMSZ	# Z > 2	Counts	RMSZ	# Z > 2
5	PXD	A	704[B]	-	30,34,34	3.32	10 (33%)	34,51,51	3.54	13 (38%)
7	TP9	A	706	2	21,25,25	2.23	2 (9%)	28,36,36	1.82	7 (25%)
3	FAD	A	702	-	53,58,58	1.67	11 (20%)	68,89,89	1.33	11 (16%)
6	F50	A	705	-	3,4,4	1.07	0	3,4,4	3.13	2 (66%)
5	PXD	A	704[A]	-	30,34,34	3.36	10 (33%)	34,51,51	3.51	9 (26%)

In the following table, the Chirals column lists the number of chiral outliers, the number of chiral centers analysed, the number of these observed in the model and the number defined in the Chemical Component Dictionary. Similar counts are reported in the Torsion and Rings columns. '-' means no outliers of that kind were identified.

Mol	Type	Chain	Res	Link	Chirals	Torsions	Rings
5	PXD	A	704[B]	-	-	7/24/26/26	0/3/3/3
7	TP9	A	706	2	-	2/17/22/22	0/1/1/1
3	FAD	A	702	-	-	8/30/50/50	0/6/6/6
6	F50	A	705	-	-	0/0/2/2	-
5	PXD	A	704[A]	-	-	9/24/26/26	0/3/3/3

All (33) bond length outliers are listed below:

Mol	Chain	Res	Type	Atoms	Z	Observed(Å)	Ideal(Å)
5	A	704[B]	PXD	CBB-NAP	11.87	1.44	1.33
5	A	704[A]	PXD	CBB-NAP	11.79	1.44	1.33
7	A	706	TP9	C4-N3	8.98	1.44	1.32
5	A	704[A]	PXD	OAC-SBF	7.14	1.51	1.43
5	A	704[B]	PXD	OAC-SBF	6.96	1.51	1.43
5	A	704[A]	PXD	CAZ-NAO	5.58	1.42	1.32
5	A	704[B]	PXD	CAZ-NAO	5.53	1.42	1.32
5	A	704[A]	PXD	OAT-CAZ	5.52	1.42	1.33
5	A	704[B]	PXD	OAT-CAZ	5.39	1.42	1.33
3	A	702	FAD	C10-N1	4.89	1.43	1.33
5	A	704[A]	PXD	OAU-CAW	4.85	1.47	1.37
5	A	704[B]	PXD	OAU-CAW	4.67	1.46	1.37
3	A	702	FAD	C4X-N5	4.64	1.39	1.30
3	A	702	FAD	C2B-C1B	-4.45	1.47	1.53
7	A	706	TP9	C4'-N4'	3.71	1.43	1.34
5	A	704[A]	PXD	SBF-NAR	3.50	1.69	1.63
5	A	704[B]	PXD	CAY-CBA	3.15	1.45	1.41
5	A	704[B]	PXD	SBF-NAR	3.13	1.68	1.63
5	A	704[A]	PXD	CAL-CAY	-3.07	1.35	1.39

Continued on next page...

Continued from previous page...

Mol	Chain	Res	Type	Atoms	Z	Observed(Å)	Ideal(Å)
3	A	702	FAD	O4B-C1B	3.05	1.45	1.41
5	A	704[B]	PXD	CAL-CAY	-2.93	1.35	1.39
5	A	704[A]	PXD	CAY-CBA	2.88	1.45	1.41
5	A	704[A]	PXD	CAJ-CAL	2.82	1.44	1.38
5	A	704[B]	PXD	CAJ-CAL	2.79	1.44	1.38
3	A	702	FAD	O3'-C3'	-2.76	1.36	1.43
3	A	702	FAD	C2-N1	2.48	1.42	1.36
5	A	704[A]	PXD	FAE-CBC	2.41	1.43	1.35
3	A	702	FAD	C1'-N10	-2.37	1.42	1.48
5	A	704[B]	PXD	FAE-CBC	2.34	1.43	1.35
3	A	702	FAD	C2'-C3'	2.34	1.57	1.53
3	A	702	FAD	C4X-C4	2.18	1.52	1.44
3	A	702	FAD	C1'-C2'	2.16	1.55	1.52
3	A	702	FAD	C2B-C3B	-2.05	1.47	1.53

All (42) bond angle outliers are listed below:

Mol	Chain	Res	Type	Atoms	Z	Observed(°)	Ideal(°)
5	A	704[A]	PXD	OAD-SBF-OAC	-15.48	100.53	119.55
5	A	704[B]	PXD	OAD-SBF-OAC	-15.18	100.89	119.55
5	A	704[A]	PXD	CBA-SBF-NAR	6.99	114.57	106.68
5	A	704[B]	PXD	CBA-SBF-NAR	6.83	114.39	106.68
5	A	704[B]	PXD	OAS-CAX-CBB	4.89	120.04	115.03
5	A	704[B]	PXD	CAB-OAT-CAZ	-4.87	113.18	117.49
5	A	704[A]	PXD	CAB-OAT-CAZ	-4.75	113.29	117.49
5	A	704[A]	PXD	OAS-CAX-CBB	4.63	119.78	115.03
7	A	706	TP9	PA-O3A-PB	-4.60	117.04	132.83
5	A	704[B]	PXD	CAV-NAR-SBF	-4.56	119.25	125.71
6	A	705	F50	OXT-C-CH3	4.44	119.25	111.09
3	A	702	FAD	N3A-C2A-N1A	-4.00	122.42	128.68
5	A	704[A]	PXD	CAV-NAR-SBF	-3.63	120.57	125.71
5	A	704[A]	PXD	CAM-NAO-CAZ	3.59	119.33	114.97
5	A	704[B]	PXD	CAM-NAO-CAZ	3.39	119.09	114.97
7	A	706	TP9	C7'-N3-C4	-3.24	121.51	125.97
7	A	706	TP9	C6'-N1'-C2'	3.22	121.44	115.96
7	A	706	TP9	C5'-C6'-N1'	-3.21	118.46	123.82
5	A	704[B]	PXD	CAW-CBA-SBF	-3.17	115.50	120.39
3	A	702	FAD	C4A-C5A-N7A	-3.12	106.15	109.40
3	A	702	FAD	C4-N3-C2	-3.01	120.07	125.64
5	A	704[A]	PXD	CAW-CBA-SBF	-2.94	115.86	120.39
6	A	705	F50	OXT-C-O	-2.84	120.72	124.14
3	A	702	FAD	C4X-C10-N10	2.84	120.63	116.48

Continued on next page...

Continued from previous page...

Mol	Chain	Res	Type	Atoms	Z	Observed(°)	Ideal(°)
3	A	702	FAD	C4X-C4-N3	2.74	120.15	113.19
3	A	702	FAD	C4-C4X-N5	2.71	122.09	118.23
5	A	704[B]	PXD	FAH-CBE-CAY	-2.68	108.03	112.70
3	A	702	FAD	C10-C4X-N5	-2.58	119.38	124.86
3	A	702	FAD	C4X-C10-N1	-2.50	118.93	124.73
7	A	706	TP9	CM4-C4-N3	2.48	120.78	118.00
3	A	702	FAD	O4-C4-C4X	-2.46	120.06	126.60
7	A	706	TP9	C6'-C5'-C4'	2.42	119.01	115.72
3	A	702	FAD	C10-N1-C2	2.36	121.63	116.90
5	A	704[B]	PXD	CAY-CBA-SBF	2.30	126.11	120.30
7	A	706	TP9	N1'-C2'-N3'	-2.29	121.61	125.54
5	A	704[B]	PXD	OAU-CAW-CAK	-2.24	119.12	123.97
5	A	704[B]	PXD	CAN-OAU-CAW	-2.16	113.48	118.27
5	A	704[B]	PXD	CAA-OAS-CAX	-2.09	114.81	117.75
5	A	704[A]	PXD	OAU-CAW-CAK	-2.09	119.44	123.97
5	A	704[A]	PXD	FAH-CBE-CAY	-2.08	109.08	112.70
5	A	704[B]	PXD	OAS-CAX-CAM	-2.04	120.34	125.08
3	A	702	FAD	C9A-N10-C10	-2.02	117.62	120.77

There are no chirality outliers.

All (26) torsion outliers are listed below:

Mol	Chain	Res	Type	Atoms
3	A	702	FAD	C3'-C4'-C5'-O5'
3	A	702	FAD	O4'-C4'-C5'-O5'
3	A	702	FAD	PA-O3P-P-O5'
5	A	704[A]	PXD	OAU-CAN-CBC-FAE
5	A	704[A]	PXD	OAU-CAN-CBC-FAF
5	A	704[A]	PXD	CAW-CBA-SBF-NAR
5	A	704[A]	PXD	CAY-CBA-SBF-NAR
5	A	704[A]	PXD	CAV-NAR-SBF-OAC
5	A	704[B]	PXD	OAU-CAN-CBC-FAE
5	A	704[B]	PXD	OAU-CAN-CBC-FAF
5	A	704[B]	PXD	CAW-CBA-SBF-NAR
5	A	704[B]	PXD	CAY-CBA-SBF-NAR
5	A	704[B]	PXD	CAV-NAR-SBF-OAC
7	A	706	TP9	C4-C5-C6-C7
3	A	702	FAD	O3'-C3'-C4'-C5'
3	A	702	FAD	C2'-C3'-C4'-C5'
3	A	702	FAD	O3'-C3'-C4'-O4'
3	A	702	FAD	C2'-C3'-C4'-O4'
5	A	704[B]	PXD	CBA-CAW-OAU-CAN

Continued on next page...

Continued from previous page...

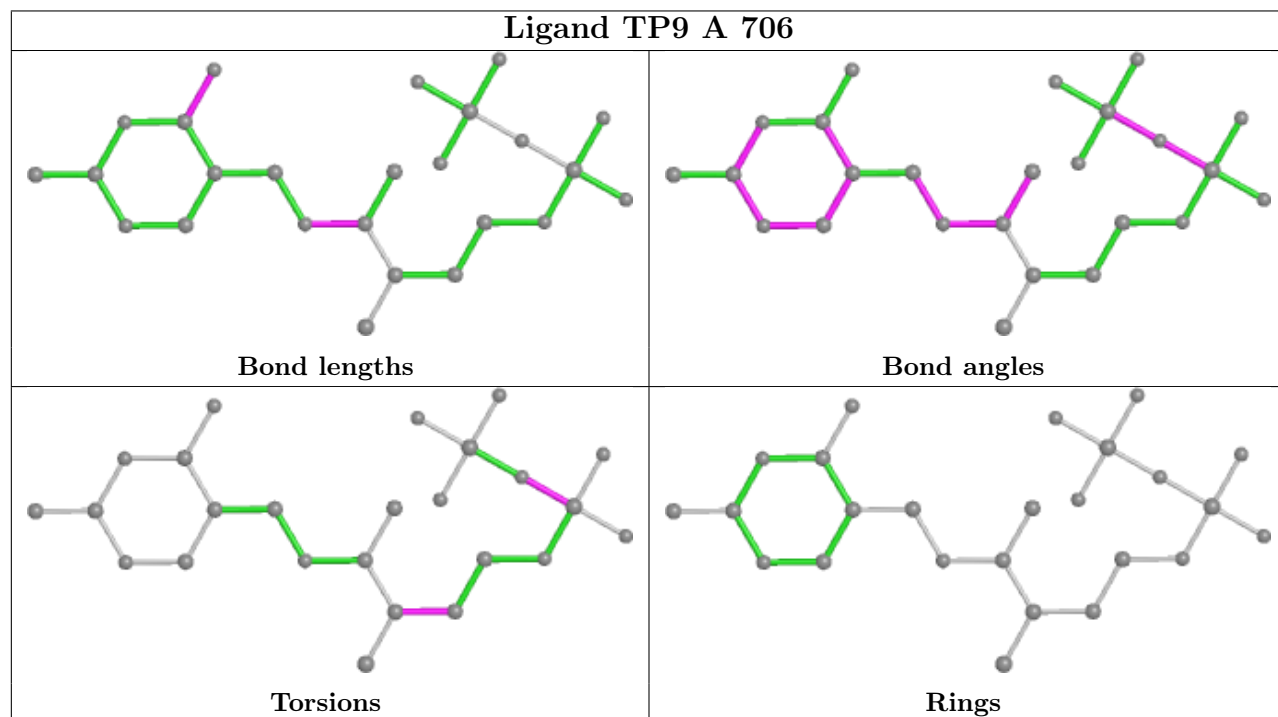
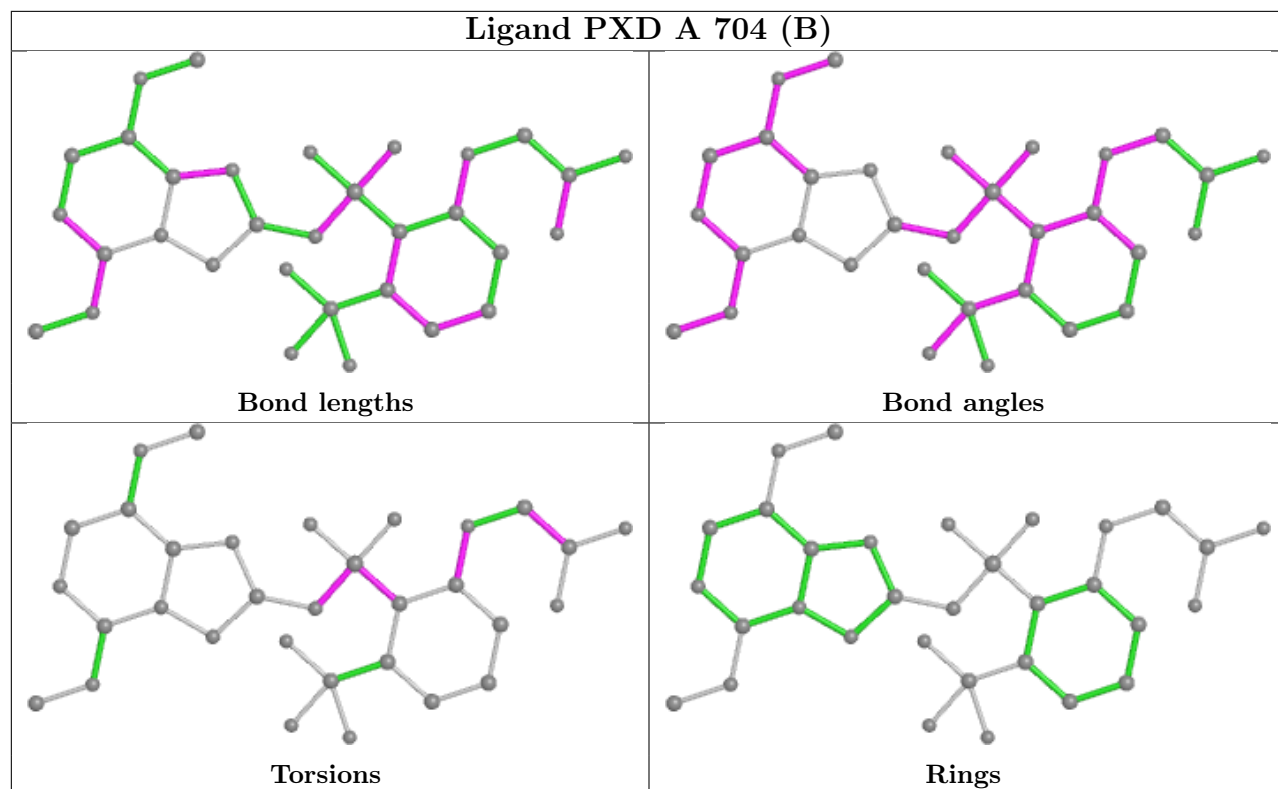
Mol	Chain	Res	Type	Atoms
5	A	704[A]	PXD	CAK-CAW-OAU-CAN
5	A	704[A]	PXD	CBA-CAW-OAU-CAN
5	A	704[B]	PXD	CAK-CAW-OAU-CAN
7	A	706	TP9	PB-O3A-PA-O7
5	A	704[A]	PXD	CBA-CAY-CBE-FAH
5	A	704[A]	PXD	CBA-CAY-CBE-FAG
3	A	702	FAD	O4B-C4B-C5B-O5B

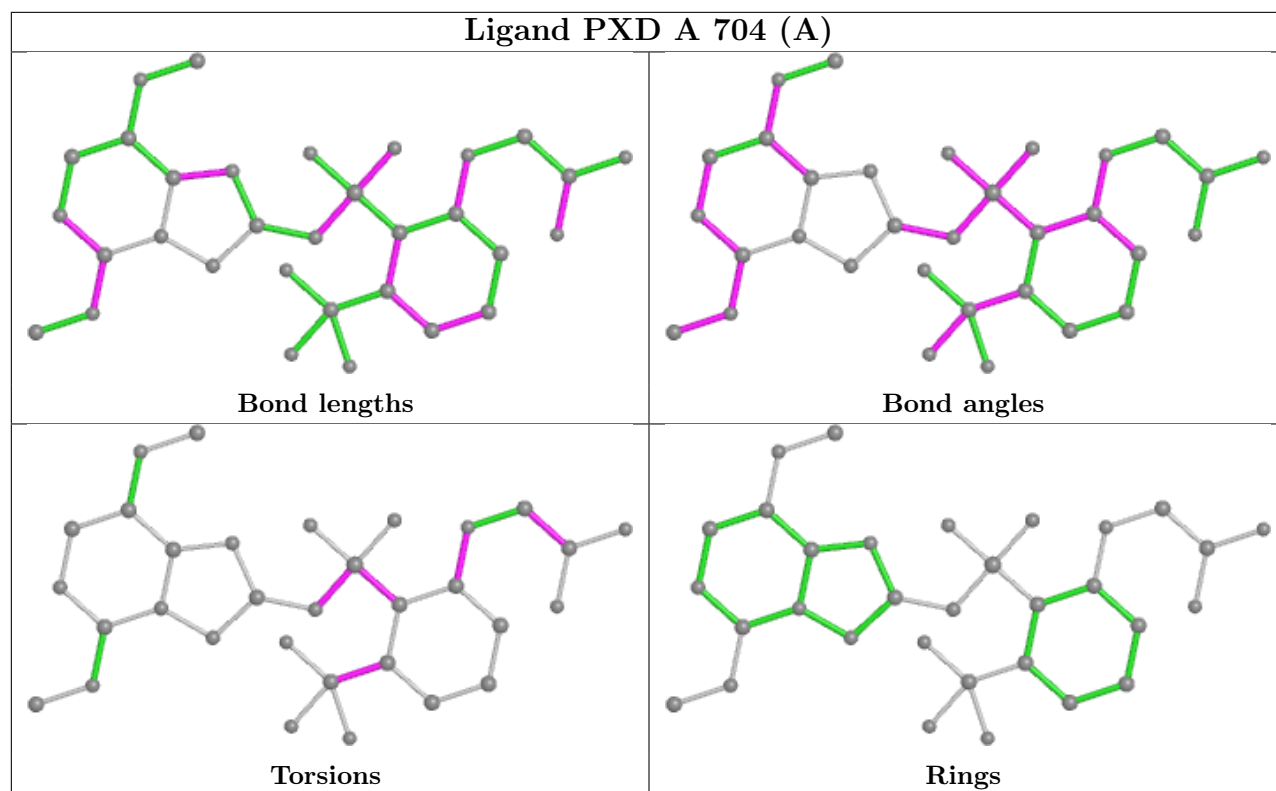
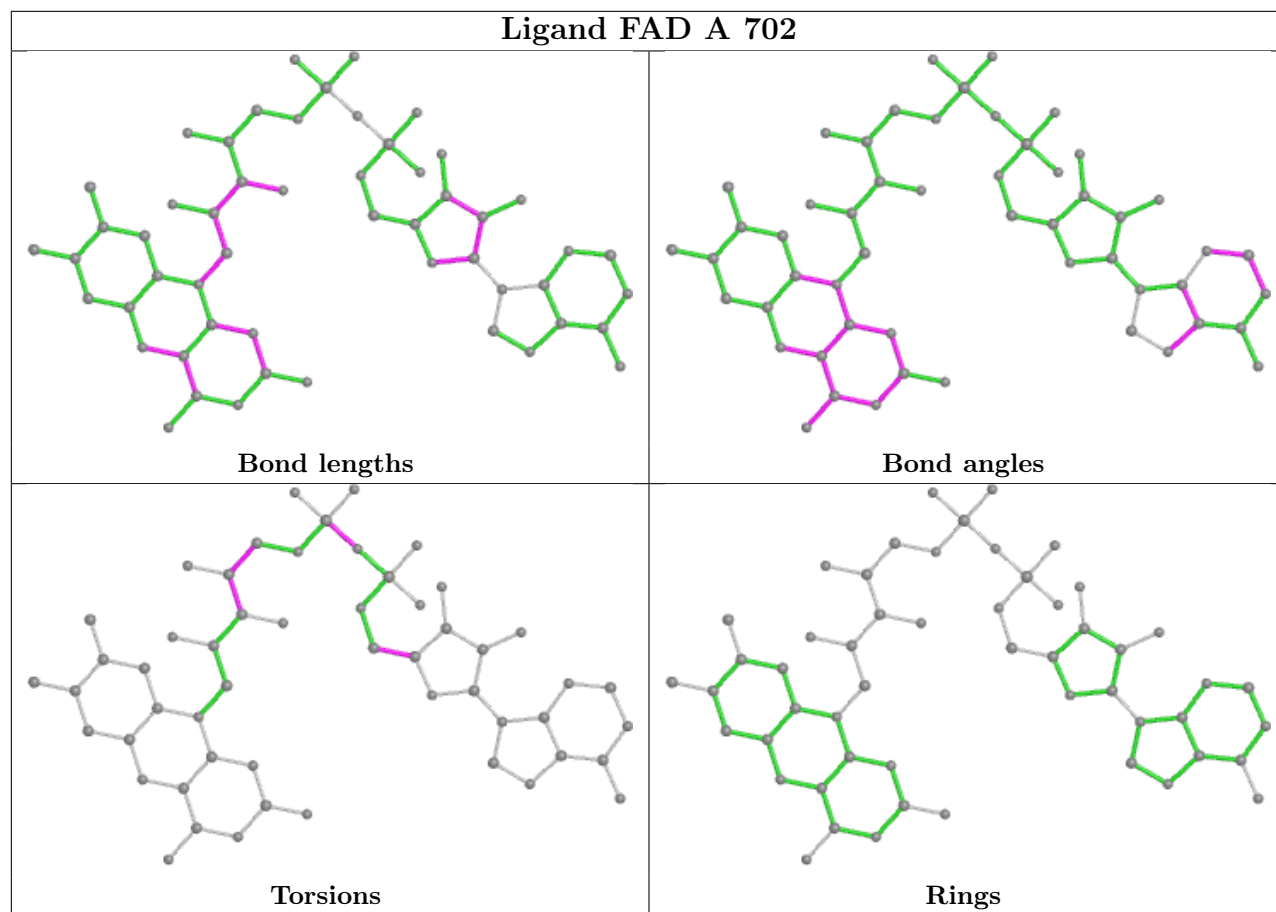
There are no ring outliers.

4 monomers are involved in 5 short contacts:

Mol	Chain	Res	Type	Clashes	Symm-Clashes
5	A	704[B]	PXD	1	0
7	A	706	TP9	1	0
3	A	702	FAD	2	0
5	A	704[A]	PXD	1	0

The following is a two-dimensional graphical depiction of Mogul quality analysis of bond lengths, bond angles, torsion angles, and ring geometry for all instances of the Ligand of Interest. In addition, ligands with molecular weight > 250 and outliers as shown on the validation Tables will also be included. For torsion angles, if less than 5% of the Mogul distribution of torsion angles is within 10 degrees of the torsion angle in question, then that torsion angle is considered an outlier. Any bond that is central to one or more torsion angles identified as an outlier by Mogul will be highlighted in the graph. For rings, the root-mean-square deviation (RMSD) between the ring in question and similar rings identified by Mogul is calculated over all ring torsion angles. If the average RMSD is greater than 60 degrees and the minimal RMSD between the ring in question and any Mogul-identified rings is also greater than 60 degrees, then that ring is considered an outlier. The outliers are highlighted in purple. The color gray indicates Mogul did not find sufficient equivalents in the CSD to analyse the geometry.





5.7 Other polymers [i](#)

There are no such residues in this entry.

5.8 Polymer linkage issues [i](#)

There are no chain breaks in this entry.

6 Fit of model and data [i](#)

6.1 Protein, DNA and RNA chains [i](#)

In the following table, the column labelled ‘#RSRZ> 2’ contains the number (and percentage) of RSRZ outliers, followed by percent RSRZ outliers for the chain as percentile scores relative to all X-ray entries and entries of similar resolution. The OWAB column contains the minimum, median, 95th percentile and maximum values of the occupancy-weighted average B-factor per residue. The column labelled ‘Q< 0.9’ lists the number of (and percentage) of residues with an average occupancy less than 0.9.

Mol	Chain	Analysed	<RSRZ>	#RSRZ>2	OWAB(Å ²)	Q<0.9
1	A	582/590 (98%)	-0.50	6 (1%) 82 84	25, 39, 65, 111	0

All (6) RSRZ outliers are listed below:

Mol	Chain	Res	Type	RSRZ
1	A	86	THR	5.0
1	A	431	GLU	3.4
1	A	430	ALA	2.8
1	A	88	ILE	2.7
1	A	658[A]	ASN	2.2
1	A	87	PHE	2.1

6.2 Non-standard residues in protein, DNA, RNA chains [i](#)

There are no non-standard protein/DNA/RNA residues in this entry.

6.3 Carbohydrates [i](#)

There are no monosaccharides in this entry.

6.4 Ligands [i](#)

In the following table, the Atoms column lists the number of modelled atoms in the group and the number defined in the chemical component dictionary. The B-factors column lists the minimum, median, 95th percentile and maximum values of B factors of atoms in the group. The column labelled ‘Q< 0.9’ lists the number of atoms with occupancy less than 0.9.

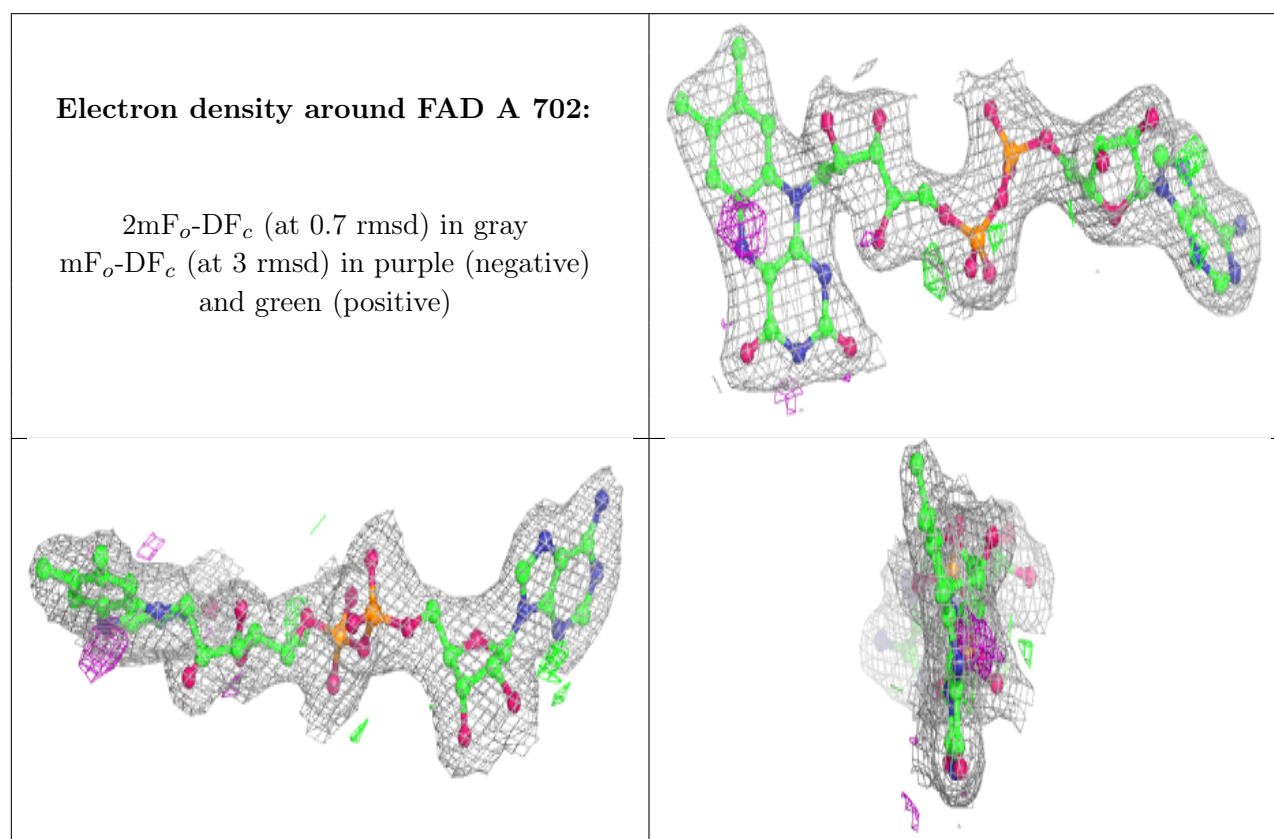
Mol	Type	Chain	Res	Atoms	RSCC	RSR	B-factors(Å ²)	Q<0.9
3	FAD	A	702	53/53	0.98	0.12	21,33,41,50	0

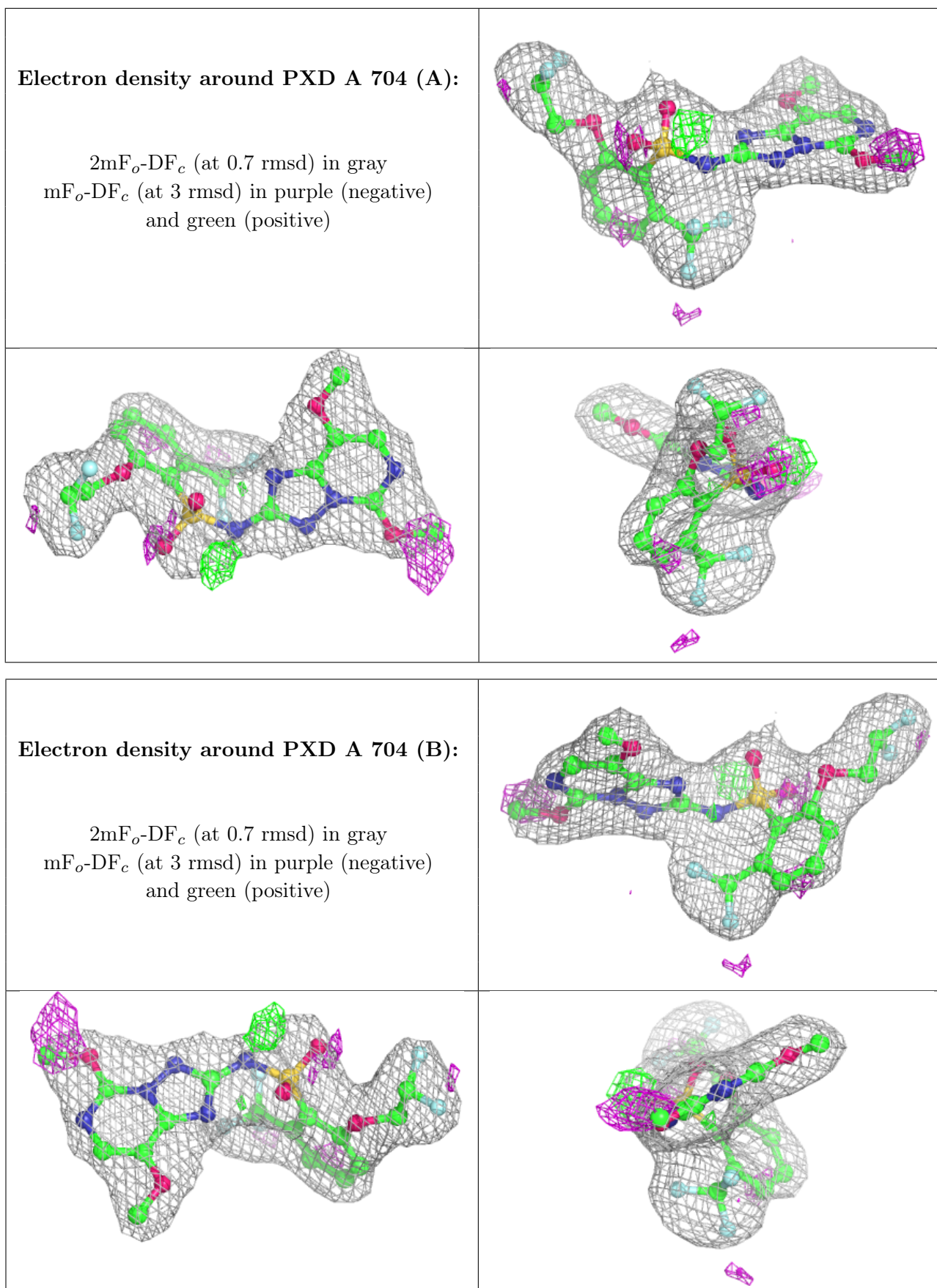
Continued on next page...

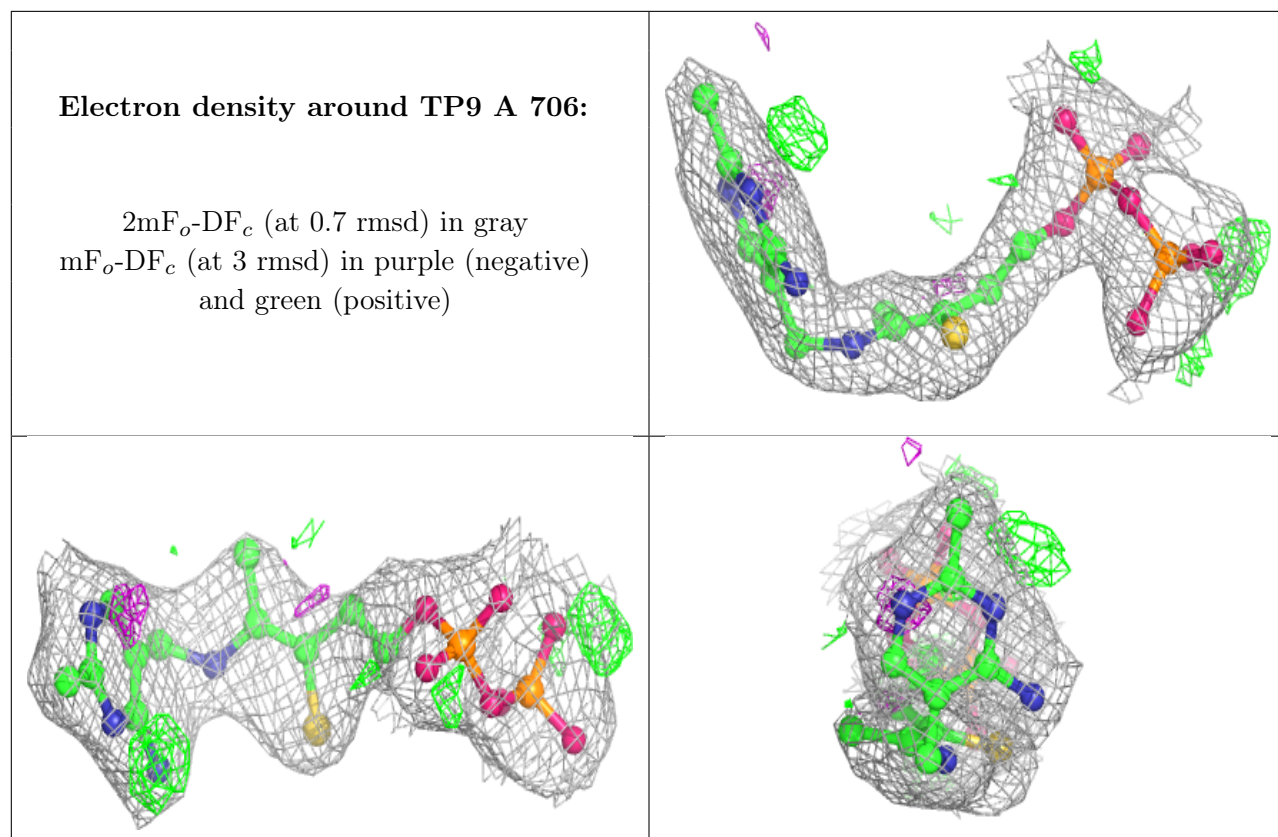
Continued from previous page...

Mol	Type	Chain	Res	Atoms	RSCC	RSR	B-factors(\AA^2)	Q<0.9
5	PXD	A	704[A]	32/32	0.98	0.11	31,34,42,50	32
5	PXD	A	704[B]	32/32	0.98	0.11	28,34,47,58	32
6	F50	A	705	5/5	0.98	0.19	63,65,68,70	0
4	K	A	703	1/1	0.99	0.19	37,37,37,37	1
2	MG	A	701	1/1	0.99	0.11	32,32,32,32	0
7	TP9	A	706	25/25	0.99	0.16	21,28,39,56	0

The following is a graphical depiction of the model fit to experimental electron density of all instances of the Ligand of Interest. In addition, ligands with molecular weight > 250 and outliers as shown on the geometry validation Tables will also be included. Each fit is shown from different orientation to approximate a three-dimensional view.







6.5 Other polymers [i](#)

There are no such residues in this entry.