



Full wwPDB X-ray Structure Validation Report ⓘ

Mar 3, 2024 – 12:45 AM EST

PDB ID : 5WDY
Title : Crystal structure of WNK1 in complex with 1-cyclohexyl-N-({6-fluoro-1-[2-(3-methoxyphenyl)pyridin-4-yl]-1H-indol-3-yl}methyl)methanamine (compound 6)
Authors : Xie, X.; Kohls, D.
Deposited on : 2017-07-06
Resolution : 2.46 Å(reported)

This is a Full wwPDB X-ray Structure Validation Report for a publicly released PDB entry.

We welcome your comments at validation@mail.wwpdb.org

A user guide is available at

<https://www.wwpdb.org/validation/2017/XrayValidationReportHelp>

with specific help available everywhere you see the ⓘ symbol.

The types of validation reports are described at

<http://www.wwpdb.org/validation/2017/FAQs#types>.

The following versions of software and data (see [references ⓘ](#)) were used in the production of this report:

MolProbity : 4.02b-467
Mogul : 1.8.5 (274361), CSD as541be (2020)
Xtrriage (Phenix) : 1.13
EDS : 2.36
buster-report : 1.1.7 (2018)
Percentile statistics : 20191225.v01 (using entries in the PDB archive December 25th 2019)
Refmac : 5.8.0158
CCP4 : 7.0.044 (Gargrove)
Ideal geometry (proteins) : Engh & Huber (2001)
Ideal geometry (DNA, RNA) : Parkinson et al. (1996)
Validation Pipeline (wwPDB-VP) : 2.36

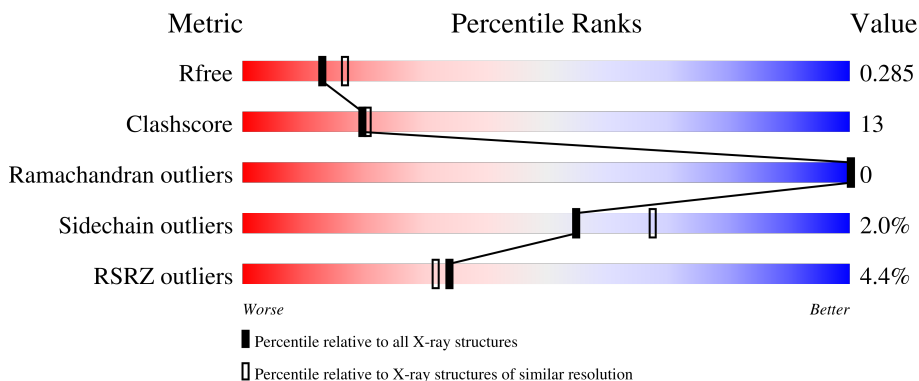
1 Overall quality at a glance

The following experimental techniques were used to determine the structure:

X-RAY DIFFRACTION

The reported resolution of this entry is 2.46 Å.

Percentile scores (ranging between 0-100) for global validation metrics of the entry are shown in the following graphic. The table shows the number of entries on which the scores are based.



Metric	Whole archive (#Entries)	Similar resolution (#Entries, resolution range(Å))
R_{free}	130704	1544 (2.48-2.44)
Clashscore	141614	1613 (2.48-2.44)
Ramachandran outliers	138981	1598 (2.48-2.44)
Sidechain outliers	138945	1598 (2.48-2.44)
RSRZ outliers	127900	1523 (2.48-2.44)

The table below summarises the geometric issues observed across the polymeric chains and their fit to the electron density. The red, orange, yellow and green segments of the lower bar indicate the fraction of residues that contain outliers for ≥ 3 , 2, 1 and 0 types of geometric quality criteria respectively. A grey segment represents the fraction of residues that are not modelled. The numeric value for each fraction is indicated below the corresponding segment, with a dot representing fractions $\leq 5\%$. The upper red bar (where present) indicates the fraction of residues that have poor fit to the electron density. The numeric value is given above the bar.

Mol	Chain	Length	Quality of chain
1	A	279	 4% 72% 20% • 7%
1	B	279	 5% 65% 27% • 7%

2 Entry composition

There are 5 unique types of molecules in this entry. The entry contains 4348 atoms, of which 0 are hydrogens and 0 are deuteriums.

In the tables below, the ZeroOcc column contains the number of atoms modelled with zero occupancy, the AltConf column contains the number of residues with at least one atom in alternate conformation and the Trace column contains the number of residues modelled with at most 2 atoms.

- Molecule 1 is a protein called Serine/threonine-protein kinase WNK1.

Mol	Chain	Residues	Atoms					ZeroOcc	AltConf	Trace
			Total	C	N	O	S			
1	A	260	2099	1338	356	389	16	0	1	0
1	B	259	2085	1331	353	385	16	0	0	0

There are 10 discrepancies between the modelled and reference sequences:

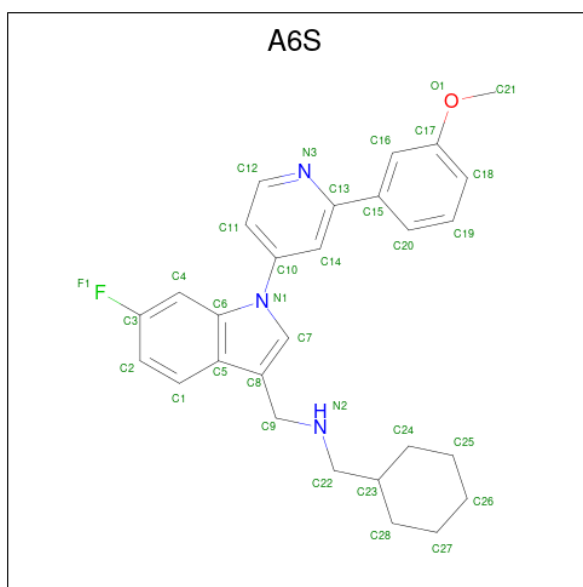
Chain	Residue	Modelled	Actual	Comment	Reference
A	205	GLY	-	expression tag	UNP Q9H4A3
A	378	ASP	SER	engineered mutation	UNP Q9H4A3
A	396	ALA	GLU	engineered mutation	UNP Q9H4A3
A	397	ALA	GLU	engineered mutation	UNP Q9H4A3
A	398	ALA	LYS	engineered mutation	UNP Q9H4A3
B	205	GLY	-	expression tag	UNP Q9H4A3
B	378	ASP	SER	engineered mutation	UNP Q9H4A3
B	396	ALA	GLU	engineered mutation	UNP Q9H4A3
B	397	ALA	GLU	engineered mutation	UNP Q9H4A3
B	398	ALA	LYS	engineered mutation	UNP Q9H4A3

- Molecule 2 is PHOSPHOAMINOPHOSPHONIC ACID-ADENYLATE ESTER (three-letter code: ANP) (formula: C₁₀H₁₇N₆O₁₂P₃).



Mol	Chain	Residues	Atoms					ZeroOcc	AltConf
			Total	C	N	O	P		
2	A	1	Total	C	N	O	P	0	0
			31	10	6	12	3		
2	B	1	Total	C	N	O	P	0	0
			31	10	6	12	3		

- Molecule 3 is 1-cyclohexyl-N-({6-fluoro-1-[2-(3-methoxyphenyl)pyridin-4-yl]-1H-indol-3-yl} methyl)methanamine (three-letter code: A6S) (formula: C₂₈H₃₀FN₃O) (labeled as "Ligand of Interest" by depositor).



Mol	Chain	Residues	Atoms					ZeroOcc	AltConf
			Total	C	F	N	O		
3	A	1	Total	C	F	N	O	0	0
			33	28	1	3	1		

Continued on next page...

Continued from previous page...

Mol	Chain	Residues	Atoms					ZeroOcc	AltConf
			Total	C	F	N	O		
3	B	1	33	28	1	3	1	0	0

- Molecule 4 is MANGANESE (II) ION (three-letter code: MN) (formula: Mn).

Mol	Chain	Residues	Atoms		ZeroOcc	AltConf
4	A	2	Total	Mn	0	0
			2	2		
4	B	1	Total	Mn	0	0
			1	1		

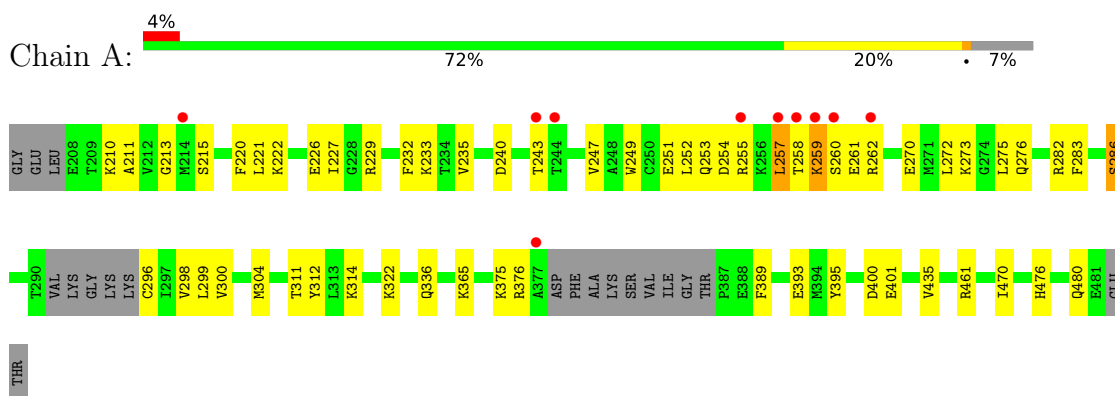
- Molecule 5 is water.

Mol	Chain	Residues	Atoms		ZeroOcc	AltConf
5	A	21	Total	O	0	0
			21	21		
5	B	12	Total	O	0	0
			12	12		

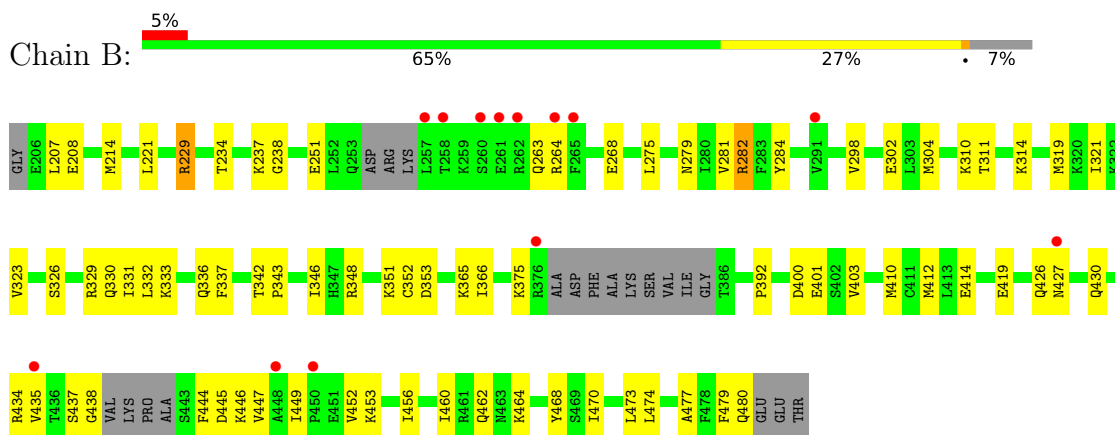
3 Residue-property plots

These plots are drawn for all protein, RNA, DNA and oligosaccharide chains in the entry. The first graphic for a chain summarises the proportions of the various outlier classes displayed in the second graphic. The second graphic shows the sequence view annotated by issues in geometry and electron density. Residues are color-coded according to the number of geometric quality criteria for which they contain at least one outlier: green = 0, yellow = 1, orange = 2 and red = 3 or more. A red dot above a residue indicates a poor fit to the electron density ($RSRZ > 2$). Stretches of 2 or more consecutive residues without any outlier are shown as a green connector. Residues present in the sample, but not in the model, are shown in grey.

- Molecule 1: Serine/threonine-protein kinase WNK1



- Molecule 1: Serine/threonine-protein kinase WNK1



4 Data and refinement statistics i

Property	Value	Source
Space group	P 1	Depositor
Cell constants a, b, c, α , β , γ	34.33Å 62.27Å 70.27Å 67.13° 77.42° 74.74°	Depositor
Resolution (Å)	32.84 – 2.46 32.84 – 2.46	Depositor EDS
% Data completeness (in resolution range)	95.2 (32.84-2.46) 95.2 (32.84-2.46)	Depositor EDS
R_{merge}	0.06	Depositor
R_{sym}	(Not available)	Depositor
$\langle I/\sigma(I) \rangle$ ¹	1.20 (at 2.45Å)	Xtrriage
Refinement program	PHENIX 1.11.1_2575	Depositor
R, R_{free}	0.228 , 0.285 0.228 , 0.285	Depositor DCC
R_{free} test set	907 reflections (5.11%)	wwPDB-VP
Wilson B-factor (Å ²)	56.7	Xtrriage
Anisotropy	0.187	Xtrriage
Bulk solvent k_{sol} (e/Å ³), B_{sol} (Å ²)	0.35 , 48.3	EDS
L-test for twinning ²	$\langle L \rangle = 0.49$, $\langle L^2 \rangle = 0.32$	Xtrriage
Estimated twinning fraction	0.038 for h,h-k,h-l	Xtrriage
F_o, F_c correlation	0.93	EDS
Total number of atoms	4348	wwPDB-VP
Average B, all atoms (Å ²)	62.0	wwPDB-VP

Xtrriage's analysis on translational NCS is as follows: *The largest off-origin peak in the Patterson function is 6.81% of the height of the origin peak. No significant pseudotranslation is detected.*

¹Intensities estimated from amplitudes.

²Theoretical values of $\langle |L| \rangle$, $\langle L^2 \rangle$ for acentric reflections are 0.5, 0.333 respectively for untwinned datasets, and 0.375, 0.2 for perfectly twinned datasets.

5 Model quality [i](#)

5.1 Standard geometry [i](#)

Bond lengths and bond angles in the following residue types are not validated in this section: ANP, A6S, MN

The Z score for a bond length (or angle) is the number of standard deviations the observed value is removed from the expected value. A bond length (or angle) with $|Z| > 5$ is considered an outlier worth inspection. RMSZ is the root-mean-square of all Z scores of the bond lengths (or angles).

Mol	Chain	Bond lengths		Bond angles	
		RMSZ	# Z >5	RMSZ	# Z >5
1	A	0.28	0/2141	0.49	1/2877 (0.0%)
1	B	0.30	0/2122	0.47	0/2849
All	All	0.29	0/4263	0.48	1/5726 (0.0%)

There are no bond length outliers.

All (1) bond angle outliers are listed below:

Mol	Chain	Res	Type	Atoms	Z	Observed(°)	Ideal(°)
1	A	257	LEU	CA-CB-CG	5.42	127.77	115.30

There are no chirality outliers.

There are no planarity outliers.

5.2 Too-close contacts [i](#)

In the following table, the Non-H and H(model) columns list the number of non-hydrogen atoms and hydrogen atoms in the chain respectively. The H(added) column lists the number of hydrogen atoms added and optimized by MolProbity. The Clashes column lists the number of clashes within the asymmetric unit, whereas Symm-Clashes lists symmetry-related clashes.

Mol	Chain	Non-H	H(model)	H(added)	Clashes	Symm-Clashes
1	A	2099	0	2117	56	0
1	B	2085	0	2109	61	0
2	A	31	0	13	3	0
2	B	31	0	13	0	0
3	A	33	0	0	0	0
3	B	33	0	0	0	0
4	A	2	0	0	0	0
4	B	1	0	0	0	0

Continued on next page...

Continued from previous page...

Mol	Chain	Non-H	H(model)	H(added)	Clashes	Symm-Clashes
5	A	21	0	0	1	0
5	B	12	0	0	4	0
All	All	4348	0	4252	109	0

The all-atom clashscore is defined as the number of clashes found per 1000 atoms (including hydrogen atoms). The all-atom clashscore for this structure is 13.

All (109) close contacts within the same asymmetric unit are listed below, sorted by their clash magnitude.

Atom-1	Atom-2	Interatomic distance (Å)	Clash overlap (Å)
1:A:257:LEU:HB2	1:A:261:GLU:HG3	1.22	1.08
1:A:257:LEU:HB2	1:A:261:GLU:CG	2.00	0.91
1:A:233:LYS:NZ	2:A:901:ANP:O1A	2.11	0.81
1:B:346:ILE:HG22	1:B:348:ARG:HG2	1.62	0.81
1:B:336:GLN:HB2	1:B:470:ILE:HG21	1.62	0.79
1:A:257:LEU:CB	1:A:261:GLU:HG3	2.08	0.79
1:B:310:LYS:NZ	5:B:601:HOH:O	2.12	0.79
1:A:259:LYS:HD3	1:A:259:LYS:H	1.48	0.77
1:A:211:ALA:HB2	1:A:221:LEU:HB3	1.66	0.76
1:A:257:LEU:HG	1:A:262:ARG:HG2	1.68	0.76
1:A:251:GLU:HB3	1:A:298:VAL:HG12	1.69	0.74
1:B:351:LYS:HZ2	1:B:352:CYS:H	1.36	0.71
1:A:435:VAL:HG11	1:B:392:PRO:HG3	1.74	0.70
1:B:329:ARG:HG2	1:B:333:LYS:HE3	1.74	0.70
1:B:351:LYS:HD3	1:B:353:ASP:H	1.57	0.70
1:B:427:ASN:HB2	1:B:430:GLN:HG3	1.78	0.66
1:B:319:MET:HE2	1:B:323:VAL:HG12	1.76	0.66
1:A:311:THR:HA	1:A:314:LYS:HD3	1.78	0.65
1:A:272:LEU:HA	1:A:275:LEU:HD13	1.79	0.65
1:B:414:GLU:OE1	5:B:601:HOH:O	2.15	0.64
1:A:286:SER:HB2	1:A:299:LEU:HD13	1.80	0.62
1:A:304:MET:HE1	1:A:365:LYS:HD2	1.82	0.62
1:A:393:GLU:HG2	1:B:464:LYS:HE2	1.81	0.62
1:B:365:LYS:NZ	5:B:602:HOH:O	2.33	0.61
1:B:275:LEU:HD22	1:B:337:PHE:CE2	2.36	0.60
1:B:208:GLU:HG3	1:B:221:LEU:HD21	1.83	0.60
1:A:283:PHE:HE1	1:A:299:LEU:HD12	1.66	0.60
1:B:449:ILE:HG22	1:B:452:VAL:H	1.67	0.59
1:A:257:LEU:CD2	1:A:262:ARG:HG2	2.34	0.57
1:A:240:ASP:OD2	1:A:243:THR:HG22	2.04	0.57
1:A:232:PHE:HA	1:A:253:GLN:NE2	2.19	0.56

Continued on next page...

Continued from previous page...

Atom-1	Atom-2	Interatomic distance (Å)	Clash overlap (Å)
1:A:461:ARG:NH2	5:A:1002:HOH:O	2.36	0.56
1:A:227:ILE:HD11	1:A:235:VAL:HG22	1.88	0.56
1:A:226:GLU:OE1	1:A:229:ARG:HB2	2.05	0.56
1:A:215:SER:HB2	1:A:220:PHE:O	2.06	0.56
1:B:311:THR:HA	1:B:314:LYS:HD3	1.87	0.56
1:A:257:LEU:HD12	1:A:261:GLU:HB2	1.87	0.55
1:A:232:PHE:HA	1:A:253:GLN:HE22	1.72	0.55
1:A:393:GLU:HG2	1:B:464:LYS:HG2	1.89	0.54
1:A:222:LYS:HB2	1:A:249:TRP:CD2	2.44	0.53
1:A:257:LEU:CG	1:A:262:ARG:HG2	2.37	0.53
1:B:452:VAL:HG12	1:B:456:ILE:HD11	1.91	0.52
1:B:351:LYS:HZ2	1:B:352:CYS:N	2.06	0.52
1:B:473:LEU:H	1:B:473:LEU:HD12	1.74	0.52
1:A:210:LYS:O	1:A:210:LYS:HD2	2.10	0.52
1:A:270:GLU:HA	1:A:273:LYS:HD2	1.92	0.52
1:B:438:GLY:HA2	1:B:462:GLN:NE2	2.25	0.52
1:B:251:GLU:HG2	1:B:298:VAL:HG22	1.93	0.51
1:B:282:ARG:HB3	1:B:302:GLU:HB2	1.92	0.51
1:A:375:LYS:HE2	1:A:400:ASP:HB3	1.92	0.51
1:B:468:TYR:HB3	1:B:473:LEU:HD11	1.91	0.51
1:B:477:ALA:O	1:B:480:GLN:HG3	2.11	0.51
1:B:229:ARG:NH2	1:B:234:THR:OG1	2.43	0.50
1:B:447:VAL:HB	1:B:453:LYS:HD3	1.94	0.50
1:A:393:GLU:CD	1:A:393:GLU:H	2.16	0.49
1:B:264:ARG:O	1:B:268:GLU:HG3	2.11	0.49
1:B:445:ASP:HA	1:B:453:LYS:NZ	2.26	0.49
1:A:283:PHE:CE1	1:A:299:LEU:HD12	2.47	0.49
1:A:254:ASP:HA	1:A:296:CYS:HA	1.95	0.49
1:B:282:ARG:HG2	1:B:284:TYR:CZ	2.48	0.49
1:A:389:PHE:CE1	1:B:351:LYS:HG2	2.47	0.49
1:A:260:SER:OG	1:B:263:GLN:HG3	2.12	0.48
1:A:247:VAL:CG1	1:A:300:VAL:HG13	2.43	0.48
1:A:400:ASP:HB2	1:A:401:GLU:OE2	2.13	0.48
1:A:255:ARG:HG2	1:A:255:ARG:HH11	1.79	0.48
1:B:275:LEU:HD22	1:B:337:PHE:HE2	1.76	0.48
1:B:351:LYS:HZ2	1:B:352:CYS:HB2	1.78	0.48
1:A:257:LEU:HB2	1:A:261:GLU:OE2	2.14	0.47
1:A:247:VAL:HG11	1:A:300:VAL:HG13	1.97	0.47
1:A:258:THR:H	1:A:261:GLU:CG	2.27	0.47
1:A:389:PHE:HB3	1:B:410:MET:HG3	1.97	0.47
1:B:237:LYS:HE2	1:B:238:GLY:O	2.15	0.47

Continued on next page...

Continued from previous page...

Atom-1	Atom-2	Interatomic distance (Å)	Clash overlap (Å)
1:B:400:ASP:O	1:B:403:VAL:HG22	2.15	0.46
1:B:400:ASP:HB2	1:B:401:GLU:OE1	2.15	0.46
1:B:426:GLN:HB2	1:B:430:GLN:NE2	2.30	0.46
1:A:232:PHE:O	1:A:252:LEU:HA	2.15	0.46
1:B:351:LYS:HD3	1:B:352:CYS:N	2.31	0.46
1:B:279:ASN:ND2	1:B:330:GLN:HB3	2.31	0.46
1:B:326:SER:O	1:B:330:GLN:HG3	2.16	0.46
1:A:220:PHE:CE1	1:A:240:ASP:HB2	2.51	0.45
1:B:346:ILE:CD1	1:B:375:LYS:HB2	2.45	0.45
1:B:453:LYS:HA	1:B:456:ILE:HD12	1.97	0.45
1:B:437:SER:O	1:B:462:GLN:NE2	2.48	0.45
1:B:456:ILE:O	1:B:460:ILE:HG12	2.17	0.45
1:A:257:LEU:HB2	1:A:261:GLU:CD	2.37	0.44
1:B:412:MET:HE1	1:B:479:PHE:HZ	1.83	0.44
1:A:336:GLN:HB2	1:A:470:ILE:HG21	1.98	0.44
1:B:452:VAL:HG12	1:B:456:ILE:CD1	2.47	0.44
1:B:332:LEU:HB3	1:B:474:LEU:HD11	1.99	0.43
1:A:476:HIS:O	1:A:480:GLN:HG3	2.17	0.43
1:B:419:GLU:OE2	1:B:446:LYS:HD2	2.19	0.43
1:B:207:LEU:HB2	1:B:208:GLU:OE1	2.19	0.42
1:B:444:PHE:O	1:B:453:LYS:HD2	2.17	0.42
1:A:393:GLU:OE2	1:B:464:LYS:HG2	2.19	0.42
1:A:233:LYS:HZ3	2:A:901:ANP:H5'1	1.85	0.42
1:A:233:LYS:NZ	2:A:901:ANP:PA	2.93	0.41
1:A:395:TYR:CE2	1:B:435:VAL:HG21	2.55	0.41
1:A:375:LYS:HE2	1:A:400:ASP:CB	2.50	0.41
1:B:321:ILE:HD12	1:B:321:ILE:H	1.84	0.41
1:B:426:GLN:HB2	1:B:430:GLN:HE22	1.85	0.41
1:B:464:LYS:NZ	5:B:604:HOH:O	2.50	0.41
1:B:281:VAL:HG22	1:B:304:MET:HE3	2.01	0.41
1:A:213:GLY:HA3	1:A:222:LYS:HB3	2.03	0.41
1:B:470:ILE:O	1:B:474:LEU:HD13	2.20	0.41
1:B:331:ILE:HG23	1:B:366:ILE:HD11	2.03	0.40
1:A:401:GLU:H	1:A:401:GLU:CD	2.25	0.40
1:B:342:THR:HA	1:B:343:PRO:HA	1.94	0.40
1:A:222:LYS:HB2	1:A:249:TRP:CE2	2.56	0.40
1:A:276:GLN:HE21	1:A:282:ARG:NH2	2.19	0.40

There are no symmetry-related clashes.

5.3 Torsion angles [i](#)

5.3.1 Protein backbone [i](#)

In the following table, the Percentiles column shows the percent Ramachandran outliers of the chain as a percentile score with respect to all X-ray entries followed by that with respect to entries of similar resolution.

The Analysed column shows the number of residues for which the backbone conformation was analysed, and the total number of residues.

Mol	Chain	Analysed	Favoured	Allowed	Outliers	Percentiles	
1	A	255/279 (91%)	241 (94%)	14 (6%)	0	100	100
1	B	251/279 (90%)	234 (93%)	17 (7%)	0	100	100
All	All	506/558 (91%)	475 (94%)	31 (6%)	0	100	100

There are no Ramachandran outliers to report.

5.3.2 Protein sidechains [i](#)

In the following table, the Percentiles column shows the percent sidechain outliers of the chain as a percentile score with respect to all X-ray entries followed by that with respect to entries of similar resolution.

The Analysed column shows the number of residues for which the sidechain conformation was analysed, and the total number of residues.

Mol	Chain	Analysed	Rotameric	Outliers	Percentiles	
1	A	230/244 (94%)	225 (98%)	5 (2%)	52	64
1	B	229/244 (94%)	225 (98%)	4 (2%)	60	73
All	All	459/488 (94%)	450 (98%)	9 (2%)	55	67

All (9) residues with a non-rotameric sidechain are listed below:

Mol	Chain	Res	Type
1	A	259	LYS
1	A	286	SER
1	A	312	TYR
1	A	322	LYS
1	A	376	ARG
1	B	214	MET
1	B	229	ARG
1	B	282	ARG

Continued on next page...

Continued from previous page...

Mol	Chain	Res	Type
1	B	434	ARG

Sometimes sidechains can be flipped to improve hydrogen bonding and reduce clashes. All (3) such sidechains are listed below:

Mol	Chain	Res	Type
1	A	253	GLN
1	A	480	GLN
1	B	354	ASN

5.3.3 RNA [i](#)

There are no RNA molecules in this entry.

5.4 Non-standard residues in protein, DNA, RNA chains [i](#)

There are no non-standard protein/DNA/RNA residues in this entry.

5.5 Carbohydrates [i](#)

There are no monosaccharides in this entry.

5.6 Ligand geometry [i](#)

Of 7 ligands modelled in this entry, 3 are monoatomic - leaving 4 for Mogul analysis.

In the following table, the Counts columns list the number of bonds (or angles) for which Mogul statistics could be retrieved, the number of bonds (or angles) that are observed in the model and the number of bonds (or angles) that are defined in the Chemical Component Dictionary. The Link column lists molecule types, if any, to which the group is linked. The Z score for a bond length (or angle) is the number of standard deviations the observed value is removed from the expected value. A bond length (or angle) with $|Z| > 2$ is considered an outlier worth inspection. RMSZ is the root-mean-square of all Z scores of the bond lengths (or angles).

Mol	Type	Chain	Res	Link	Bond lengths			Bond angles		
					Counts	RMSZ	$\# Z > 2$	Counts	RMSZ	$\# Z > 2$
2	ANP	B	502	4	29,33,33	1.87	6 (20%)	31,52,52	1.91	8 (25%)
3	A6S	A	902	-	34,37,37	1.16	4 (11%)	42,51,51	0.94	2 (4%)
2	ANP	A	901	4	29,33,33	1.90	8 (27%)	31,52,52	1.86	7 (22%)
3	A6S	B	503	-	34,37,37	1.16	4 (11%)	42,51,51	0.95	2 (4%)

In the following table, the Chirals column lists the number of chiral outliers, the number of chiral centers analysed, the number of these observed in the model and the number defined in the Chemical Component Dictionary. Similar counts are reported in the Torsion and Rings columns. '-' means no outliers of that kind were identified.

Mol	Type	Chain	Res	Link	Chirals	Torsions	Rings
2	ANP	B	502	4	-	3/14/38/38	0/3/3/3
3	A6S	A	902	-	-	1/14/24/24	0/5/5/5
2	ANP	A	901	4	-	4/14/38/38	0/3/3/3
3	A6S	B	503	-	-	2/14/24/24	0/5/5/5

All (22) bond length outliers are listed below:

Mol	Chain	Res	Type	Atoms	Z	Observed(Å)	Ideal(Å)
2	A	901	ANP	PG-N3B	4.73	1.75	1.63
2	A	901	ANP	PB-N3B	4.71	1.75	1.63
2	B	502	ANP	PG-N3B	4.69	1.75	1.63
2	B	502	ANP	PB-N3B	4.65	1.75	1.63
2	A	901	ANP	PB-O1B	3.35	1.51	1.46
2	B	502	ANP	PB-O1B	3.33	1.51	1.46
2	B	502	ANP	PG-O1G	3.25	1.51	1.46
2	A	901	ANP	PG-O1G	3.15	1.51	1.46
3	B	503	A6S	C4-C3	3.07	1.41	1.36
3	A	902	A6S	C4-C3	2.93	1.41	1.36
2	B	502	ANP	C5-C4	2.53	1.47	1.40
2	A	901	ANP	C5-C4	2.52	1.47	1.40
3	A	902	A6S	C10-N1	-2.47	1.41	1.44
2	A	901	ANP	O4'-C1'	2.38	1.44	1.41
3	A	902	A6S	C1-C2	2.32	1.41	1.36
3	B	503	A6S	C1-C2	2.31	1.41	1.36
3	B	503	A6S	C10-N1	-2.26	1.41	1.44
2	A	901	ANP	PB-O2B	-2.09	1.51	1.56
2	B	502	ANP	PB-O3A	2.05	1.61	1.59
3	A	902	A6S	C2-C3	2.04	1.41	1.37
3	B	503	A6S	C2-C3	2.02	1.41	1.37
2	A	901	ANP	PG-O3G	-2.01	1.51	1.56

All (19) bond angle outliers are listed below:

Mol	Chain	Res	Type	Atoms	Z	Observed(°)	Ideal(°)
2	B	502	ANP	O1G-PG-N3B	-6.00	102.93	111.77
2	A	901	ANP	O1G-PG-N3B	-4.90	104.56	111.77
2	B	502	ANP	O2B-PB-O1B	4.11	118.53	109.92
2	A	901	ANP	PB-O3A-PA	-4.05	118.36	132.62

Continued on next page...

Continued from previous page...

Mol	Chain	Res	Type	Atoms	Z	Observed(°)	Ideal(°)
2	A	901	ANP	O2B-PB-O1B	3.73	117.75	109.92
2	A	901	ANP	N3-C2-N1	-3.21	123.67	128.68
2	B	502	ANP	N3-C2-N1	-3.12	123.80	128.68
2	B	502	ANP	PB-O3A-PA	-3.12	121.64	132.62
3	A	902	A6S	C2-C3-C4	-2.99	119.92	123.23
2	B	502	ANP	C4-C5-N7	-2.83	106.45	109.40
2	A	901	ANP	C4-C5-N7	-2.80	106.48	109.40
3	B	503	A6S	C2-C3-C4	-2.77	120.17	123.23
2	A	901	ANP	O1B-PB-N3B	-2.77	107.69	111.77
3	B	503	A6S	C11-C10-C14	-2.58	118.69	121.74
2	B	502	ANP	O2G-PG-O3G	2.39	114.00	107.64
2	B	502	ANP	O1B-PB-N3B	-2.33	108.33	111.77
2	A	901	ANP	O2G-PG-O3G	2.25	113.64	107.64
2	B	502	ANP	C3'-C2'-C1'	2.21	104.30	100.98
3	A	902	A6S	C11-C10-C14	-2.17	119.17	121.74

There are no chirality outliers.

All (10) torsion outliers are listed below:

Mol	Chain	Res	Type	Atoms
2	A	901	ANP	PB-N3B-PG-O1G
2	A	901	ANP	PG-N3B-PB-O1B
2	A	901	ANP	O4'-C4'-C5'-O5'
2	B	502	ANP	PB-N3B-PG-O1G
2	B	502	ANP	PA-O3A-PB-O1B
3	B	503	A6S	N2-C22-C23-C24
3	B	503	A6S	N2-C22-C23-C28
2	A	901	ANP	C3'-C4'-C5'-O5'
3	A	902	A6S	C23-C22-N2-C9
2	B	502	ANP	PG-N3B-PB-O3A

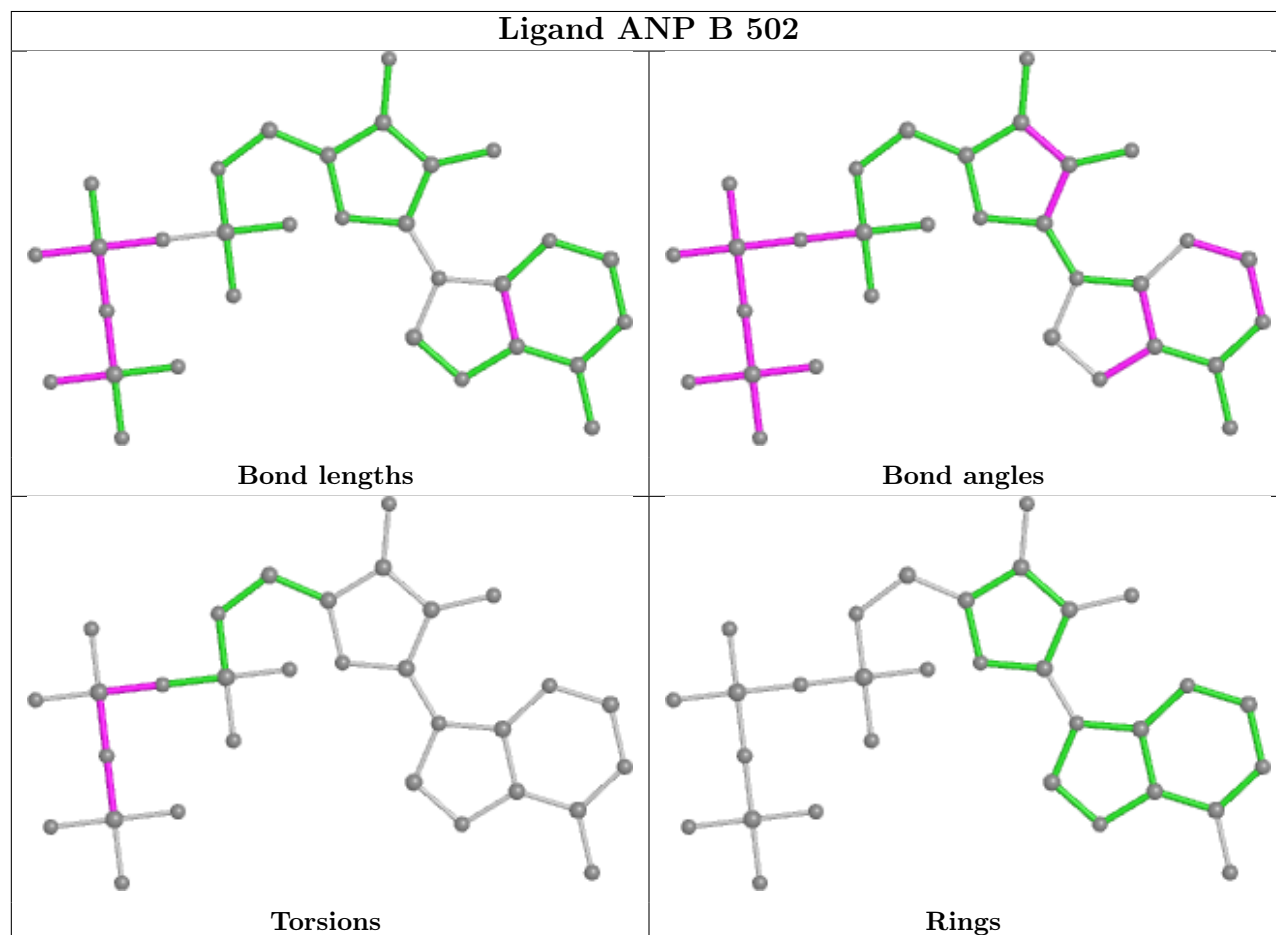
There are no ring outliers.

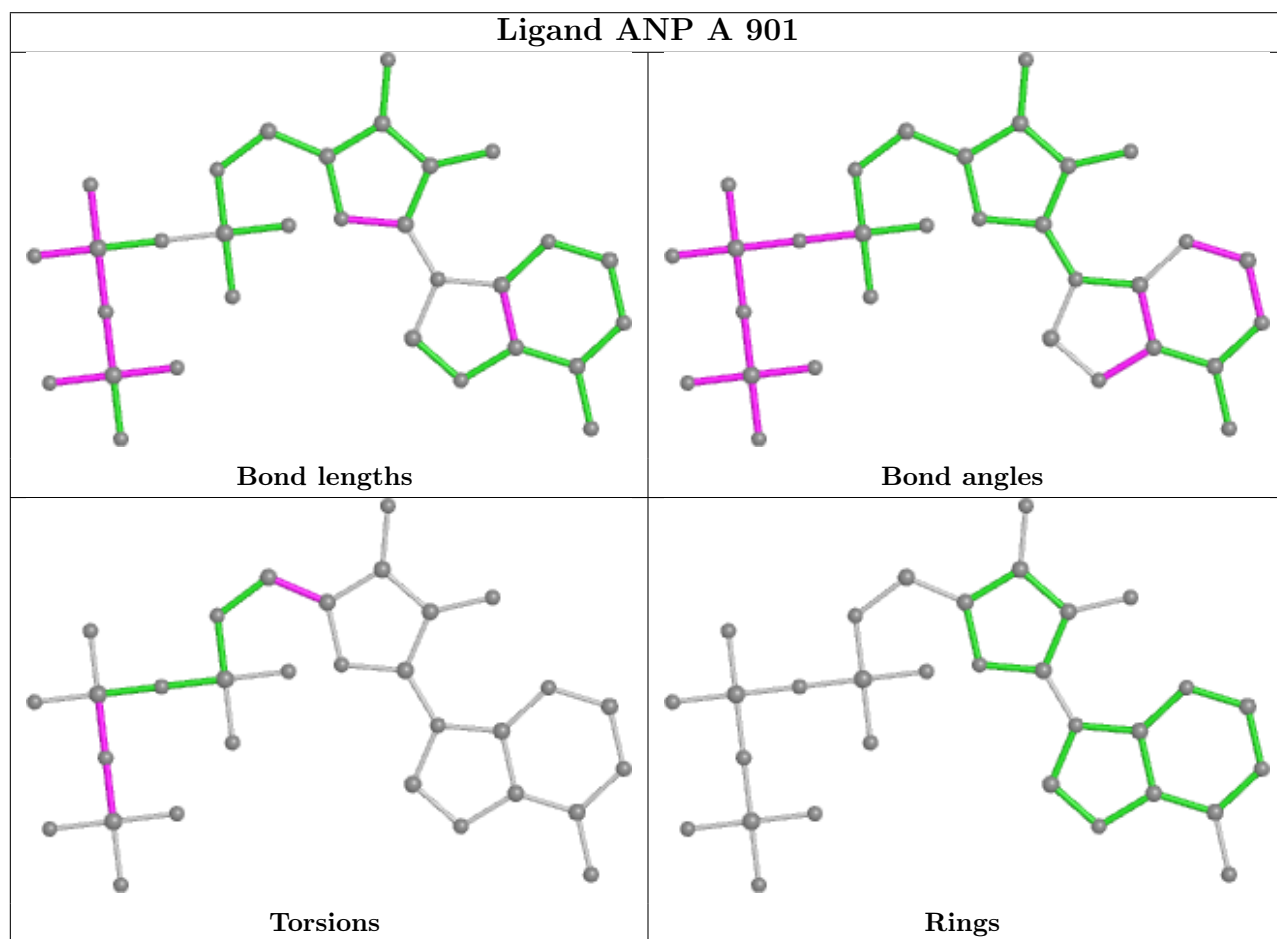
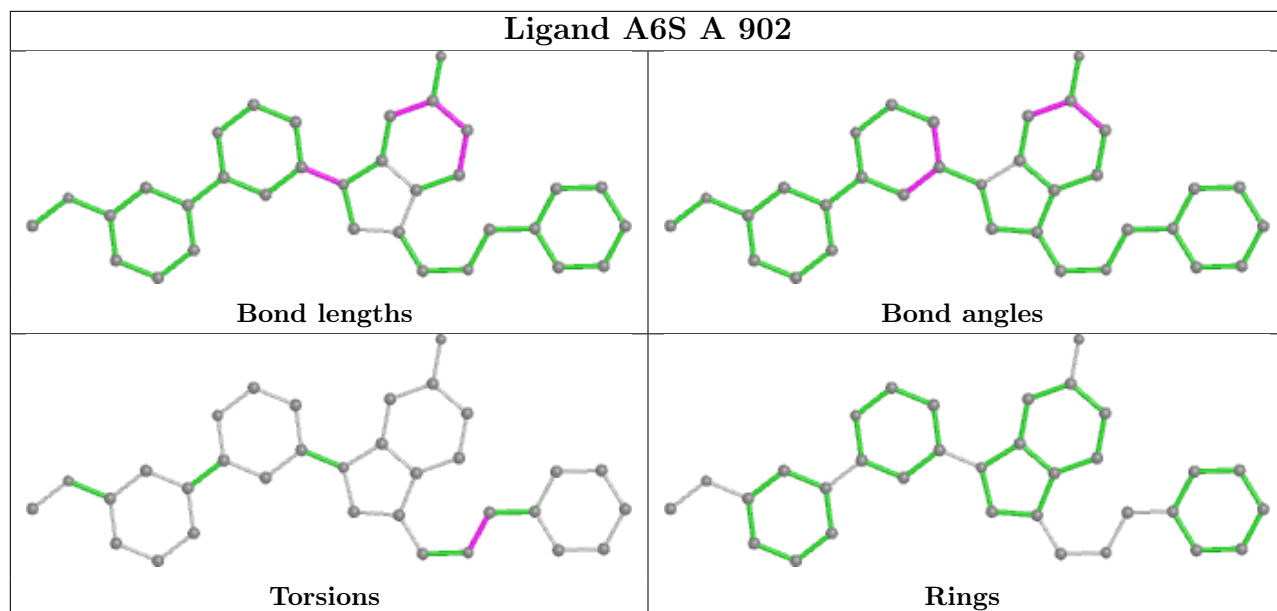
1 monomer is involved in 3 short contacts:

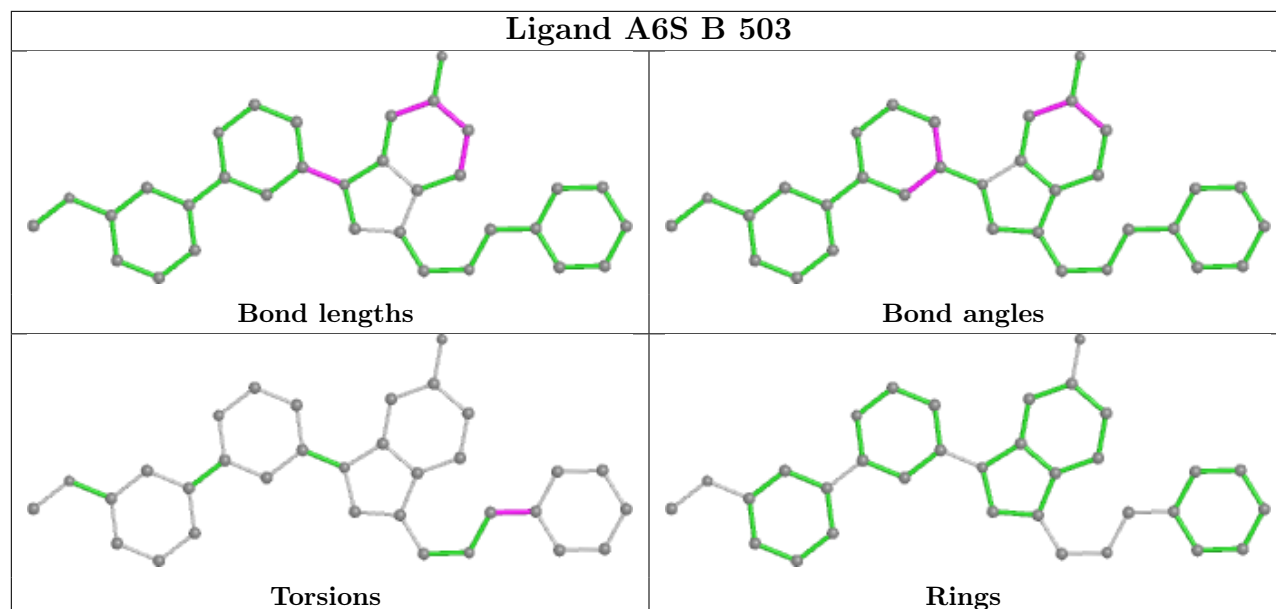
Mol	Chain	Res	Type	Clashes	Symm-Clashes
2	A	901	ANP	3	0

The following is a two-dimensional graphical depiction of Mogul quality analysis of bond lengths, bond angles, torsion angles, and ring geometry for all instances of the Ligand of Interest. In addition, ligands with molecular weight > 250 and outliers as shown on the validation Tables will also be included. For torsion angles, if less than 5% of the Mogul distribution of torsion angles is within 10 degrees of the torsion angle in question, then that torsion angle is considered an outlier.

Any bond that is central to one or more torsion angles identified as an outlier by Mogul will be highlighted in the graph. For rings, the root-mean-square deviation (RMSD) between the ring in question and similar rings identified by Mogul is calculated over all ring torsion angles. If the average RMSD is greater than 60 degrees and the minimal RMSD between the ring in question and any Mogul-identified rings is also greater than 60 degrees, then that ring is considered an outlier. The outliers are highlighted in purple. The color gray indicates Mogul did not find sufficient equivalents in the CSD to analyse the geometry.







5.7 Other polymers [i](#)

There are no such residues in this entry.

5.8 Polymer linkage issues [i](#)

There are no chain breaks in this entry.

6 Fit of model and data

6.1 Protein, DNA and RNA chains

In the following table, the column labelled ‘#RSRZ > 2’ contains the number (and percentage) of RSRZ outliers, followed by percent RSRZ outliers for the chain as percentile scores relative to all X-ray entries and entries of similar resolution. The OWAB column contains the minimum, median, 95th percentile and maximum values of the occupancy-weighted average B-factor per residue. The column labelled ‘Q < 0.9’ lists the number of (and percentage) of residues with an average occupancy less than 0.9.

Mol	Chain	Analysed	<RSRZ>	#RSRZ>2	OWAB(Å ²)	Q<0.9
1	A	260/279 (93%)	0.20	10 (3%) 40 37	37, 55, 90, 108	0
1	B	259/279 (92%)	0.35	13 (5%) 28 26	42, 62, 86, 96	0
All	All	519/558 (93%)	0.27	23 (4%) 34 32	37, 58, 88, 108	0

All (23) RSRZ outliers are listed below:

Mol	Chain	Res	Type	RSRZ
1	B	448	ALA	4.7
1	B	450	PRO	4.6
1	B	435	VAL	4.0
1	A	214	MET	3.8
1	B	427	ASN	3.2
1	B	376	ARG	3.1
1	B	262	ARG	3.0
1	B	260	SER	2.9
1	B	258	THR	2.9
1	A	255	ARG	2.9
1	A	259	LYS	2.7
1	A	243	THR	2.7
1	B	261	GLU	2.7
1	A	258	THR	2.6
1	A	260	SER	2.5
1	A	244	THR	2.4
1	A	377	ALA	2.3
1	B	264	ARG	2.3
1	B	291	VAL	2.2
1	A	262	ARG	2.2
1	B	265	PHE	2.2
1	A	257	LEU	2.1
1	B	257	LEU	2.1

6.2 Non-standard residues in protein, DNA, RNA chains [i](#)

There are no non-standard protein/DNA/RNA residues in this entry.

6.3 Carbohydrates [i](#)

There are no monosaccharides in this entry.

6.4 Ligands [i](#)

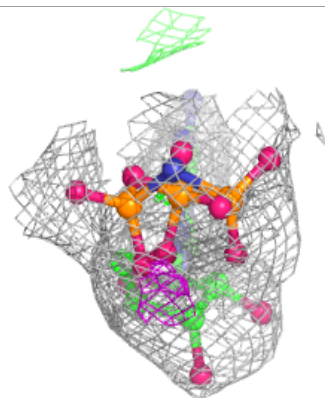
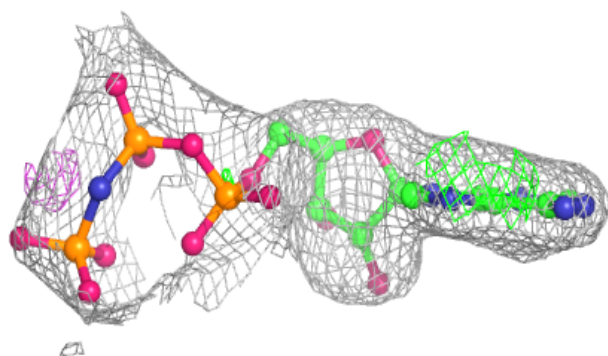
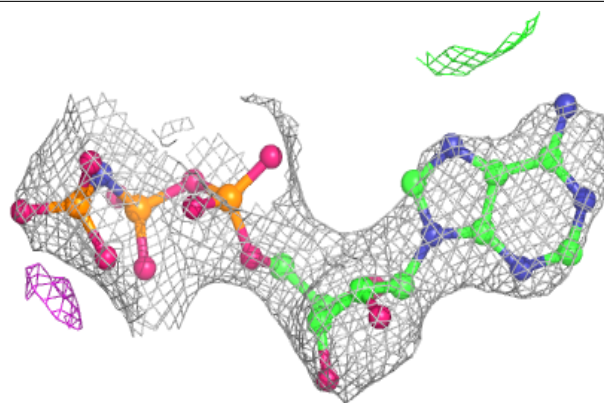
In the following table, the Atoms column lists the number of modelled atoms in the group and the number defined in the chemical component dictionary. The B-factors column lists the minimum, median, 95th percentile and maximum values of B factors of atoms in the group. The column labelled 'Q< 0.9' lists the number of atoms with occupancy less than 0.9.

Mol	Type	Chain	Res	Atoms	RSCC	RSR	B-factors(Å ²)	Q<0.9
4	MN	A	904	1/1	0.44	0.30	197,197,197,197	0
2	ANP	A	901	31/31	0.77	0.21	59,90,175,190	0
2	ANP	B	502	31/31	0.82	0.18	79,93,124,204	0
3	A6S	B	503	33/33	0.93	0.20	44,60,67,71	0
3	A6S	A	902	33/33	0.93	0.17	38,53,67,71	0
4	MN	B	501	1/1	0.93	0.06	121,121,121,121	0
4	MN	A	903	1/1	0.97	0.07	86,86,86,86	0

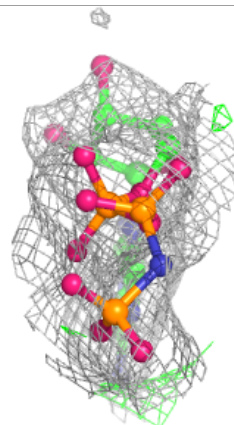
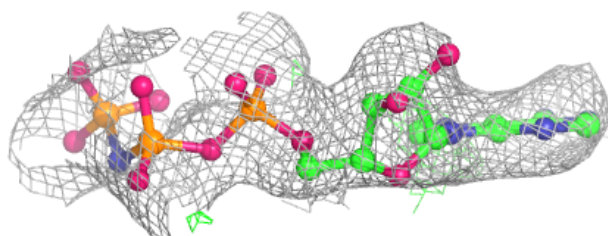
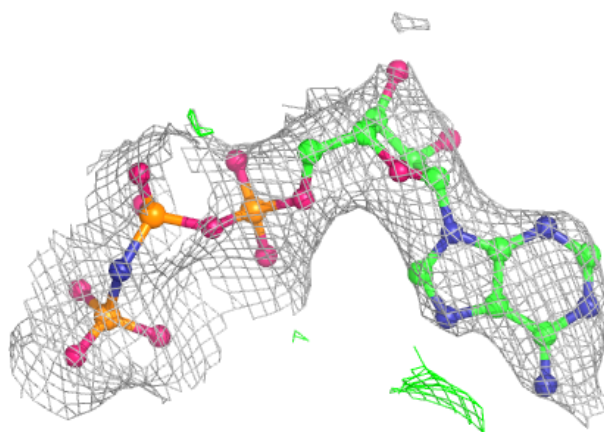
The following is a graphical depiction of the model fit to experimental electron density of all instances of the Ligand of Interest. In addition, ligands with molecular weight > 250 and outliers as shown on the geometry validation Tables will also be included. Each fit is shown from different orientation to approximate a three-dimensional view.

Electron density around ANP A 901:

$2mF_o-DF_c$ (at 0.7 rmsd) in gray
 mF_o-DF_c (at 3 rmsd) in purple (negative)
and green (positive)

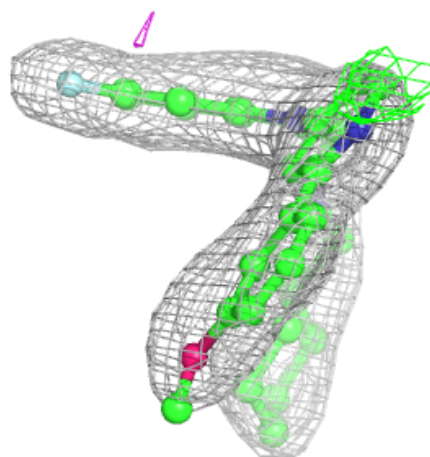
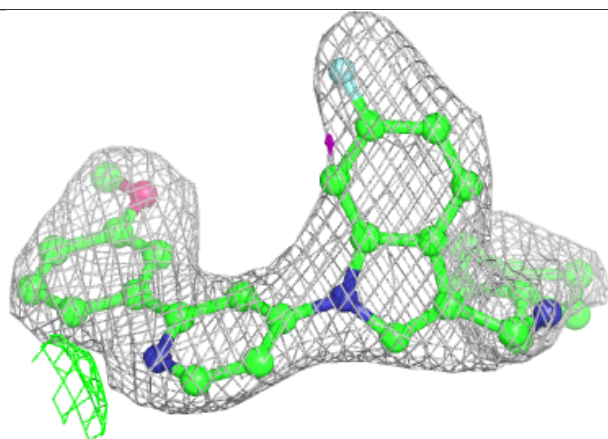
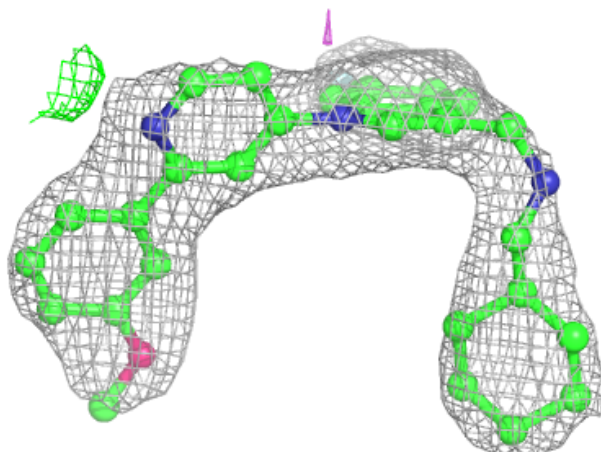
**Electron density around ANP B 502:**

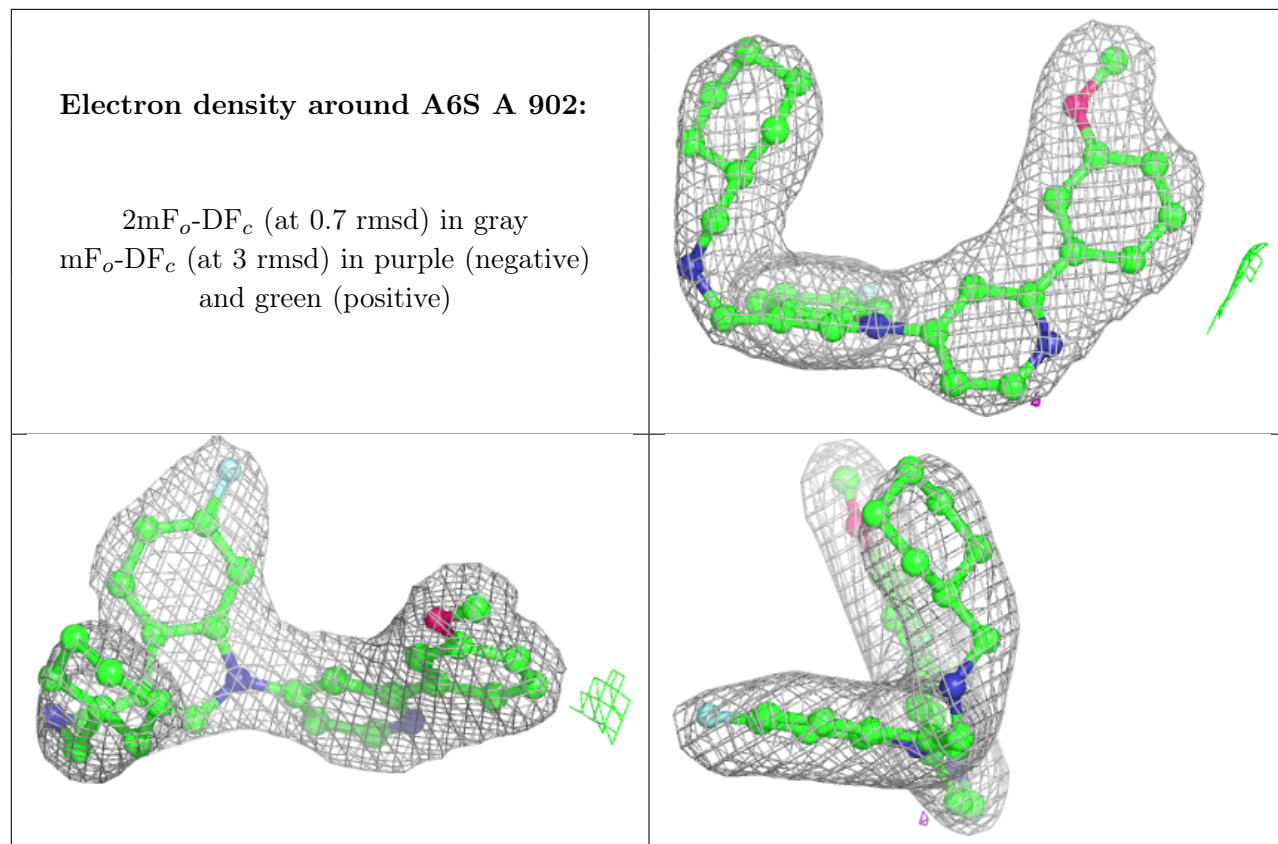
$2mF_o-DF_c$ (at 0.7 rmsd) in gray
 mF_o-DF_c (at 3 rmsd) in purple (negative)
and green (positive)



Electron density around A6S B 503:

$2mF_o-DF_c$ (at 0.7 rmsd) in gray
 mF_o-DF_c (at 3 rmsd) in purple (negative)
and green (positive)





6.5 Other polymers [i](#)

There are no such residues in this entry.