



Full wwPDB X-ray Structure Validation Report ⓘ

Oct 12, 2024 – 09:55 AM EDT

PDB ID : 5UNA
Title : Fragment of 7SK snRNA methylphosphate capping enzyme
Authors : Wu, H.; Tempel, W.; Dombrowski, L.; McCarthy, A.A.; Loppnau, P.; Bountra, C.; Arrowsmith, C.H.; Edwards, A.M.; Park, H.; Structural Genomics Consortium (SGC)
Deposited on : 2017-01-30
Resolution : 2.55 Å(reported)

This is a Full wwPDB X-ray Structure Validation Report for a publicly released PDB entry.

We welcome your comments at validation@mail.wwpdb.org

A user guide is available at

<https://www.wwpdb.org/validation/2017/XrayValidationReportHelp>

with specific help available everywhere you see the ⓘ symbol.

The types of validation reports are described at

<http://www.wwpdb.org/validation/2017/FAQs#types>.

The following versions of software and data (see [references ⓘ](#)) were used in the production of this report:

MolProbity : 4.02b-467
Mogul : 2022.3.0, CSD as543be (2022)
Xtriage (Phenix) : 1.20.1
EDS : 3.0
buster-report : 1.1.7 (2018)
Percentile statistics : 20231227.v01 (using entries in the PDB archive December 27th 2023)
CCP4 : 9.0.003 (Gargrove)
Density-Fitness : 1.0.11
Ideal geometry (proteins) : Engh & Huber (2001)
Ideal geometry (DNA, RNA) : Parkinson et al. (1996)
Validation Pipeline (wwPDB-VP) : 2.39

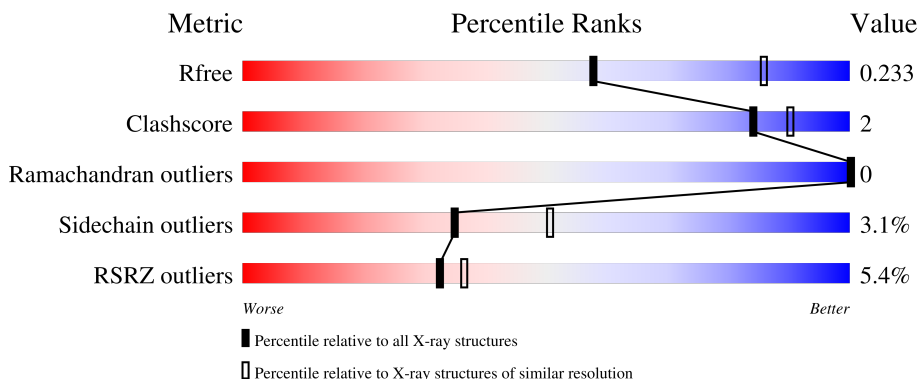
1 Overall quality at a glance

The following experimental techniques were used to determine the structure:

X-RAY DIFFRACTION

The reported resolution of this entry is 2.55 Å.

Percentile scores (ranging between 0-100) for global validation metrics of the entry are shown in the following graphic. The table shows the number of entries on which the scores are based.



Metric	Whole archive (#Entries)	Similar resolution (#Entries, resolution range(Å))
R_{free}	164625	1004 (2.54-2.54)
Clashscore	180529	1055 (2.54-2.54)
Ramachandran outliers	177936	1048 (2.54-2.54)
Sidechain outliers	177891	1048 (2.54-2.54)
RSRZ outliers	164620	1004 (2.54-2.54)

The table below summarises the geometric issues observed across the polymeric chains and their fit to the electron density. The red, orange, yellow and green segments of the lower bar indicate the fraction of residues that contain outliers for ≥ 3 , 2, 1 and 0 types of geometric quality criteria respectively. A grey segment represents the fraction of residues that are not modelled. The numeric value for each fraction is indicated below the corresponding segment, with a dot representing fractions $\leq 5\%$. The upper red bar (where present) indicates the fraction of residues that have poor fit to the electron density. The numeric value is given above the bar.

Mol	Chain	Length	Quality of chain
1	A	292	 3% 64% 7% 29%
1	B	292	 4% 64% 8% 29%
1	C	292	 6% 68% 28%
1	D	292	 3% 66% 6% 28%

Continued on next page...

Continued from previous page...

Mol	Chain	Length	Quality of chain
1	E	292	
1	F	292	
2	M	6	
2	N	6	
2	O	6	
2	Q	6	
2	R	6	

2 Entry composition [i](#)

There are 3 unique types of molecules in this entry. The entry contains 9632 atoms, of which 0 are hydrogens and 0 are deuteriums.

In the tables below, the ZeroOcc column contains the number of atoms modelled with zero occupancy, the AltConf column contains the number of residues with at least one atom in alternate conformation and the Trace column contains the number of residues modelled with at most 2 atoms.

- Molecule 1 is a protein called 7SK snRNA methylphosphate capping enzyme.

Mol	Chain	Residues	Atoms						ZeroOcc	AltConf	Trace
			Total	C	N	O	S	Se			
1	A	208	1567	1013	271	277	4	2	0	0	1
1	B	208	1573	1014	274	279	4	2	0	0	3
1	C	210	1555	1007	273	269	4	2	0	0	3
1	D	210	1578	1019	271	282	4	2	0	0	3
1	E	211	1590	1030	272	282	4	2	0	0	2
1	F	209	1521	973	270	272	4	2	0	0	2

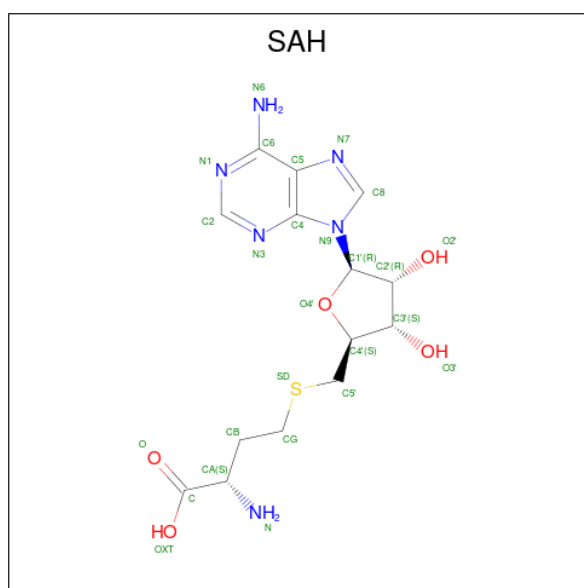
There are 12 discrepancies between the modelled and reference sequences:

Chain	Residue	Modelled	Actual	Comment	Reference
A	398	GLY	-	expression tag	UNP Q7L2J0
A	399	SER	-	expression tag	UNP Q7L2J0
B	398	GLY	-	expression tag	UNP Q7L2J0
B	399	SER	-	expression tag	UNP Q7L2J0
C	398	GLY	-	expression tag	UNP Q7L2J0
C	399	SER	-	expression tag	UNP Q7L2J0
D	398	GLY	-	expression tag	UNP Q7L2J0
D	399	SER	-	expression tag	UNP Q7L2J0
E	398	GLY	-	expression tag	UNP Q7L2J0
E	399	SER	-	expression tag	UNP Q7L2J0
F	398	GLY	-	expression tag	UNP Q7L2J0
F	399	SER	-	expression tag	UNP Q7L2J0

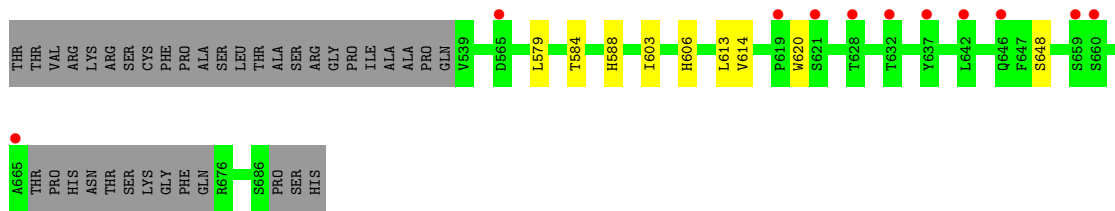
- Molecule 2 is a protein called unidentified peptide section/fragment.

Mol	Chain	Residues	Atoms				ZeroOcc	AltConf	Trace
2	M	4	Total	C	N	O	0	4	1
			17	10	4	3			
2	N	5	Total	C	N	O	0	5	1
			22	13	5	4			
2	O	6	Total	C	N	O	0	0	0
			30	18	6	6			
2	Q	4	Total	C	N	O	0	2	1
			16	9	4	3			
2	R	2	Total	C	N	O	0	0	1
			7	4	2	1			

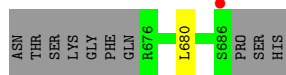
- Molecule 3 is S-ADENOSYL-L-HOMOCYSTEINE (three-letter code: SAH) (formula: $C_{14}H_{20}N_6O_5S$).



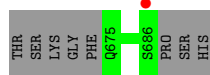
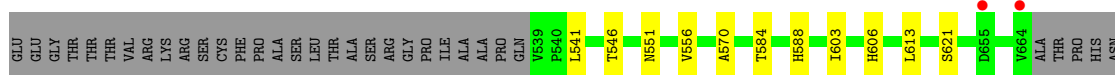
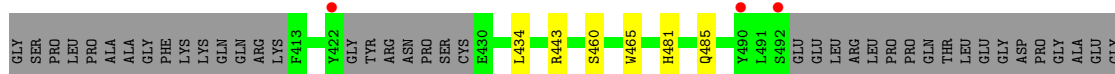
Mol	Chain	Residues	Atoms					ZeroOcc	AltConf
3	A	1	Total	C	N	O	S	0	0
			26	14	6	5	1		
3	B	1	Total	C	N	O	S	0	0
			26	14	6	5	1		
3	C	1	Total	C	N	O	S	0	0
			26	14	6	5	1		
3	D	1	Total	C	N	O	S	0	0
			26	14	6	5	1		
3	E	1	Total	C	N	O	S	0	0
			26	14	6	5	1		
3	F	1	Total	C	N	O	S	0	0
			26	14	6	5	1		



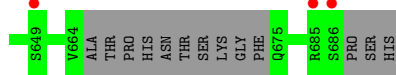
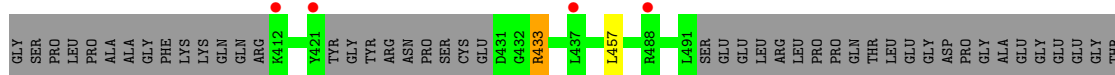
• Molecule 1: 7SK snRNA methylphosphate capping enzyme



• Molecule 1: 7SK snRNA methylphosphate capping enzyme

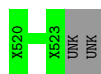


• Molecule 1: 7SK snRNA methylphosphate capping enzyme




- Molecule 2: unidentified peptide section/fragment

Chain M:  67% 33%




- Molecule 2: unidentified peptide section/fragment

Chain N:  83% 17%



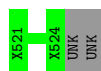
- Molecule 2: unidentified peptide section/fragment

Chain O:  83% 17%



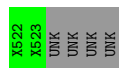
- Molecule 2: unidentified peptide section/fragment

Chain Q:  67% 33%



- Molecule 2: unidentified peptide section/fragment

Chain R:  33% 67%



4 Data and refinement statistics i

Property	Value	Source
Space group	H 3	Depositor
Cell constants a, b, c, α , β , γ	183.24Å 183.24Å 151.39Å 90.00° 90.00° 120.00°	Depositor
Resolution (Å)	25.70 – 2.55 25.70 – 2.55	Depositor EDS
% Data completeness (in resolution range)	99.6 (25.70-2.55) 99.5 (25.70-2.55)	Depositor EDS
R_{merge}	0.06	Depositor
R_{sym}	(Not available)	Depositor
$\langle I/\sigma(I) \rangle$ ¹	1.73 (at 2.51Å)	Xtrriage
Refinement program	BUSTER 2.10.2	Depositor
R, R_{free}	0.204 , 0.217 0.218 , 0.233	Depositor DCC
R_{free} test set	1917 reflections (3.10%)	wwPDB-VP
Wilson B-factor (Å ²)	67.8	Xtrriage
Anisotropy	0.144	Xtrriage
Bulk solvent k_{sol} (e/Å ³), B_{sol} (Å ²)	0.32 , 87.8	EDS
L-test for twinning ²	$\langle L \rangle = 0.49$, $\langle L^2 \rangle = 0.32$	Xtrriage
Estimated twinning fraction	0.023 for h,-h-k,-l	Xtrriage
F_o, F_c correlation	0.94	EDS
Total number of atoms	9632	wwPDB-VP
Average B, all atoms (Å ²)	90.0	wwPDB-VP

Xtrriage's analysis on translational NCS is as follows: *The largest off-origin peak in the Patterson function is 2.82% of the height of the origin peak. No significant pseudotranslation is detected.*

¹Intensities estimated from amplitudes.

²Theoretical values of $\langle |L| \rangle$, $\langle L^2 \rangle$ for acentric reflections are 0.5, 0.333 respectively for untwinned datasets, and 0.375, 0.2 for perfectly twinned datasets.

5 Model quality [i](#)

5.1 Standard geometry [i](#)

Bond lengths and bond angles in the following residue types are not validated in this section: SAH

The Z score for a bond length (or angle) is the number of standard deviations the observed value is removed from the expected value. A bond length (or angle) with $|Z| > 5$ is considered an outlier worth inspection. RMSZ is the root-mean-square of all Z scores of the bond lengths (or angles).

Mol	Chain	Bond lengths		Bond angles	
		RMSZ	# Z >5	RMSZ	# Z >5
1	A	0.50	0/1605	0.67	0/2188
1	B	0.52	0/1611	0.68	0/2195
1	C	0.52	0/1593	0.66	0/2172
1	D	0.50	0/1618	0.67	0/2206
1	E	0.60	0/1630	0.71	0/2223
1	F	0.50	0/1556	0.68	0/2122
All	All	0.52	0/9613	0.68	0/13106

There are no bond length outliers.

There are no bond angle outliers.

There are no chirality outliers.

There are no planarity outliers.

5.2 Too-close contacts [i](#)

In the following table, the Non-H and H(model) columns list the number of non-hydrogen atoms and hydrogen atoms in the chain respectively. The H(added) column lists the number of hydrogen atoms added and optimized by MolProbity. The Clashes column lists the number of clashes within the asymmetric unit, whereas Symm-Clashes lists symmetry-related clashes.

Mol	Chain	Non-H	H(model)	H(added)	Clashes	Symm-Clashes
1	A	1567	0	1424	9	0
1	B	1573	0	1443	8	0
1	C	1555	0	1386	4	0
1	D	1578	0	1420	6	0
1	E	1590	0	1451	8	0
1	F	1521	0	1324	6	0
2	M	17	0	5	0	0

Continued on next page...

Continued from previous page...

Mol	Chain	Non-H	H(model)	H(added)	Clashes	Symm-Clashes
2	N	22	0	6	0	0
2	O	30	0	9	1	0
2	Q	16	0	5	0	0
2	R	7	0	3	0	0
3	A	26	0	19	0	0
3	B	26	0	19	0	0
3	C	26	0	19	0	0
3	D	26	0	19	0	0
3	E	26	0	19	1	0
3	F	26	0	19	0	0
All	All	9632	0	8590	40	0

The all-atom clashscore is defined as the number of clashes found per 1000 atoms (including hydrogen atoms). The all-atom clashscore for this structure is 2.

All (40) close contacts within the same asymmetric unit are listed below, sorted by their clash magnitude.

Atom-1	Atom-2	Interatomic distance (Å)	Clash overlap (Å)
1:F:433:ARG:NH1	1:F:457:LEU:HD11	1.97	0.80
1:B:434:LEU:HD11	1:B:460:SER:HB3	1.82	0.61
1:D:441:TRP:CZ2	1:D:680:LEU:HD11	2.36	0.60
1:A:441:TRP:CZ2	1:A:680:LEU:HD11	2.39	0.57
1:A:434:LEU:HD11	1:A:460:SER:HB3	1.87	0.56
1:E:434:LEU:HD11	1:E:460:SER:HB3	1.89	0.55
1:E:481:HIS:O	1:E:485:GLN:HG2	2.10	0.52
1:D:434:LEU:HD11	1:D:460:SER:HB3	1.92	0.51
1:E:603:ILE:HG21	1:E:613:LEU:HD13	1.93	0.49
1:B:584:THR:O	1:B:588:HIS:HB2	2.13	0.48
1:B:645:GLU:H	1:B:645:GLU:CD	2.17	0.47
1:F:645:GLU:H	1:F:645:GLU:CD	2.17	0.47
1:A:578:VAL:HG23	1:A:607:LEU:HD21	1.98	0.45
1:E:584:THR:O	1:E:588:HIS:HB2	2.16	0.45
1:A:584:THR:O	1:A:588:HIS:HB2	2.17	0.45
1:A:603:ILE:HG21	1:A:613:LEU:HD13	1.99	0.44
1:D:603:ILE:HG21	1:D:613:LEU:HD13	1.99	0.44
1:F:603:ILE:HG21	1:F:613:LEU:HD13	1.99	0.44
1:A:570:ALA:HB3	1:E:541:LEU:HD21	1.99	0.44
1:D:546:THR:HA	1:D:551:ASN:HB3	2.00	0.44
1:C:579:LEU:HD23	1:C:614:VAL:HB	2.00	0.43
3:E:701:SAH:H4'	3:E:701:SAH:HB1	2.01	0.43
1:D:579:LEU:HD23	1:D:614:VAL:HB	2.00	0.43

Continued on next page...

Continued from previous page...

Atom-1	Atom-2	Interatomic distance (Å)	Clash overlap (Å)
1:B:579:LEU:HD23	1:B:614:VAL:HB	2.00	0.43
1:A:541:LEU:HD21	1:E:570:ALA:HB3	2.01	0.42
1:D:584:THR:O	1:D:588:HIS:HB2	2.19	0.42
1:B:474:ASP:O	1:B:557:THR:HA	2.19	0.42
1:F:546:THR:HA	1:F:551:ASN:HB3	2.02	0.42
1:B:603:ILE:HG21	1:B:613:LEU:HD13	2.01	0.42
1:C:603:ILE:HG21	1:C:613:LEU:HD13	2.01	0.42
1:B:573:PRO:HB2	1:B:608:ARG:HG2	2.02	0.41
1:A:546:THR:HA	1:A:551:ASN:HB3	2.03	0.41
1:F:579:LEU:HD23	1:F:614:VAL:HB	2.02	0.41
1:F:584:THR:O	1:F:588:HIS:HB2	2.20	0.41
1:E:546:THR:HA	1:E:551:ASN:HB3	2.03	0.41
1:C:584:THR:O	1:C:588:HIS:HB2	2.21	0.40
1:B:546:THR:HA	1:B:551:ASN:HB3	2.03	0.40
1:A:477:SER:HB3	1:A:557:THR:HG21	2.04	0.40
1:C:443:ARG:HD3	2:O:525:UNK:CB	2.51	0.40
1:E:443:ARG:HG2	1:E:465:TRP:O	2.22	0.40

There are no symmetry-related clashes.

5.3 Torsion angles [i](#)

5.3.1 Protein backbone [i](#)

In the following table, the Percentiles column shows the percent Ramachandran outliers of the chain as a percentile score with respect to all X-ray entries followed by that with respect to entries of similar resolution.

The Analysed column shows the number of residues for which the backbone conformation was analysed, and the total number of residues.

Mol	Chain	Analysed	Favoured	Allowed	Outliers	Percentiles	
1	A	200/292 (68%)	194 (97%)	6 (3%)	0	100	100
1	B	200/292 (68%)	193 (96%)	7 (4%)	0	100	100
1	C	202/292 (69%)	193 (96%)	9 (4%)	0	100	100
1	D	202/292 (69%)	194 (96%)	8 (4%)	0	100	100
1	E	203/292 (70%)	195 (96%)	8 (4%)	0	100	100
1	F	201/292 (69%)	193 (96%)	8 (4%)	0	100	100
All	All	1208/1752 (69%)	1162 (96%)	46 (4%)	0	100	100

There are no Ramachandran outliers to report.

5.3.2 Protein sidechains [i](#)

In the following table, the Percentiles column shows the percent sidechain outliers of the chain as a percentile score with respect to all X-ray entries followed by that with respect to entries of similar resolution.

The Analysed column shows the number of residues for which the sidechain conformation was analysed, and the total number of residues.

Mol	Chain	Analysed	Rotameric	Outliers	Percentiles	
1	A	150/253 (59%)	146 (97%)	4 (3%)	40	57
1	B	152/253 (60%)	145 (95%)	7 (5%)	23	33
1	C	143/253 (56%)	139 (97%)	4 (3%)	38	55
1	D	150/253 (59%)	145 (97%)	5 (3%)	33	48
1	E	153/253 (60%)	150 (98%)	3 (2%)	50	69
1	F	137/253 (54%)	133 (97%)	4 (3%)	37	54
All	All	885/1518 (58%)	858 (97%)	27 (3%)	35	50

All (27) residues with a non-rotameric sidechain are listed below:

Mol	Chain	Res	Type
1	A	433	ARG
1	A	606	HIS
1	A	621	SER
1	A	648	SER
1	B	433	ARG
1	B	490	TYR
1	B	606	HIS
1	B	621	SER
1	B	639	ARG
1	B	648	SER
1	B	655	ASP
1	C	433	ARG
1	C	606	HIS
1	C	620	TRP
1	C	648	SER
1	D	433	ARG
1	D	556	VAL
1	D	606	HIS
1	D	621	SER

Continued on next page...

Continued from previous page...

Mol	Chain	Res	Type
1	D	648	SER
1	E	556	VAL
1	E	606	HIS
1	E	621	SER
1	F	433	ARG
1	F	556	VAL
1	F	606	HIS
1	F	621	SER

Sometimes sidechains can be flipped to improve hydrogen bonding and reduce clashes. There are no such sidechains identified.

5.3.3 RNA [i](#)

There are no RNA molecules in this entry.

5.4 Non-standard residues in protein, DNA, RNA chains [i](#)

There are no non-standard protein/DNA/RNA residues in this entry.

5.5 Carbohydrates [i](#)

There are no oligosaccharides in this entry.

5.6 Ligand geometry [i](#)

6 ligands are modelled in this entry.

In the following table, the Counts columns list the number of bonds (or angles) for which Mogul statistics could be retrieved, the number of bonds (or angles) that are observed in the model and the number of bonds (or angles) that are defined in the Chemical Component Dictionary. The Link column lists molecule types, if any, to which the group is linked. The Z score for a bond length (or angle) is the number of standard deviations the observed value is removed from the expected value. A bond length (or angle) with $|Z| > 2$ is considered an outlier worth inspection. RMSZ is the root-mean-square of all Z scores of the bond lengths (or angles).

Mol	Type	Chain	Res	Link	Bond lengths			Bond angles		
					Counts	RMSZ	# Z > 2	Counts	RMSZ	# Z > 2
3	SAH	B	701	-	23,28,28	0.74	1 (4%)	22,40,40	1.30	3 (13%)
3	SAH	C	701	-	23,28,28	0.73	1 (4%)	22,40,40	1.13	3 (13%)

Mol	Type	Chain	Res	Link	Bond lengths			Bond angles		
					Counts	RMSZ	# Z > 2	Counts	RMSZ	# Z > 2
3	SAH	D	701	-	23,28,28	1.04	2 (8%)	22,40,40	1.21	2 (9%)
3	SAH	E	701	-	23,28,28	1.10	2 (8%)	22,40,40	1.52	2 (9%)
3	SAH	A	701	-	23,28,28	1.06	2 (8%)	22,40,40	1.29	3 (13%)
3	SAH	F	701	-	23,28,28	0.74	1 (4%)	22,40,40	1.17	3 (13%)

In the following table, the Chirals column lists the number of chiral outliers, the number of chiral centers analysed, the number of these observed in the model and the number defined in the Chemical Component Dictionary. Similar counts are reported in the Torsion and Rings columns. '-' means no outliers of that kind were identified.

Mol	Type	Chain	Res	Link	Chirals	Torsions	Rings
3	SAH	B	701	-	-	2/11/31/31	0/3/3/3
3	SAH	C	701	-	-	1/11/31/31	0/3/3/3
3	SAH	D	701	-	-	2/11/31/31	0/3/3/3
3	SAH	E	701	-	-	0/11/31/31	0/3/3/3
3	SAH	A	701	-	-	1/11/31/31	0/3/3/3
3	SAH	F	701	-	-	0/11/31/31	0/3/3/3

All (9) bond length outliers are listed below:

Mol	Chain	Res	Type	Atoms	Z	Observed(Å)	Ideal(Å)
3	E	701	SAH	O-C	3.34	1.32	1.22
3	D	701	SAH	OXT-C	-2.85	1.21	1.30
3	A	701	SAH	O-C	2.72	1.30	1.22
3	A	701	SAH	OXT-C	-2.71	1.22	1.30
3	D	701	SAH	O-C	2.50	1.29	1.22
3	E	701	SAH	OXT-C	-2.50	1.22	1.30
3	F	701	SAH	CB-CA	2.28	1.58	1.53
3	B	701	SAH	CB-CA	2.16	1.57	1.53
3	C	701	SAH	CB-CA	2.02	1.57	1.53

All (16) bond angle outliers are listed below:

Mol	Chain	Res	Type	Atoms	Z	Observed(°)	Ideal(°)
3	E	701	SAH	CB-CG-SD	-4.54	103.32	113.45
3	B	701	SAH	CB-CG-SD	-3.67	105.25	113.45
3	E	701	SAH	CB-CA-N	3.66	119.65	110.12
3	A	701	SAH	CB-CG-SD	-3.65	105.31	113.45
3	D	701	SAH	CB-CG-SD	-3.29	106.11	113.45
3	F	701	SAH	CB-CG-SD	-3.10	106.54	113.45
3	A	701	SAH	CB-CA-N	2.88	117.62	110.12

Continued on next page...

Continued from previous page...

Mol	Chain	Res	Type	Atoms	Z	Observed(°)	Ideal(°)
3	C	701	SAH	CB-CA-N	2.77	117.33	110.12
3	B	701	SAH	CB-CA-N	2.76	117.32	110.12
3	F	701	SAH	CB-CA-N	2.75	117.29	110.12
3	C	701	SAH	CB-CG-SD	-2.64	107.56	113.45
3	D	701	SAH	CB-CA-N	2.45	116.52	110.12
3	B	701	SAH	C5-C6-N6	2.31	123.83	120.31
3	A	701	SAH	C5-C6-N6	2.20	123.66	120.31
3	F	701	SAH	C5-C6-N6	2.18	123.63	120.31
3	C	701	SAH	C5-C6-N6	2.07	123.46	120.31

There are no chirality outliers.

All (6) torsion outliers are listed below:

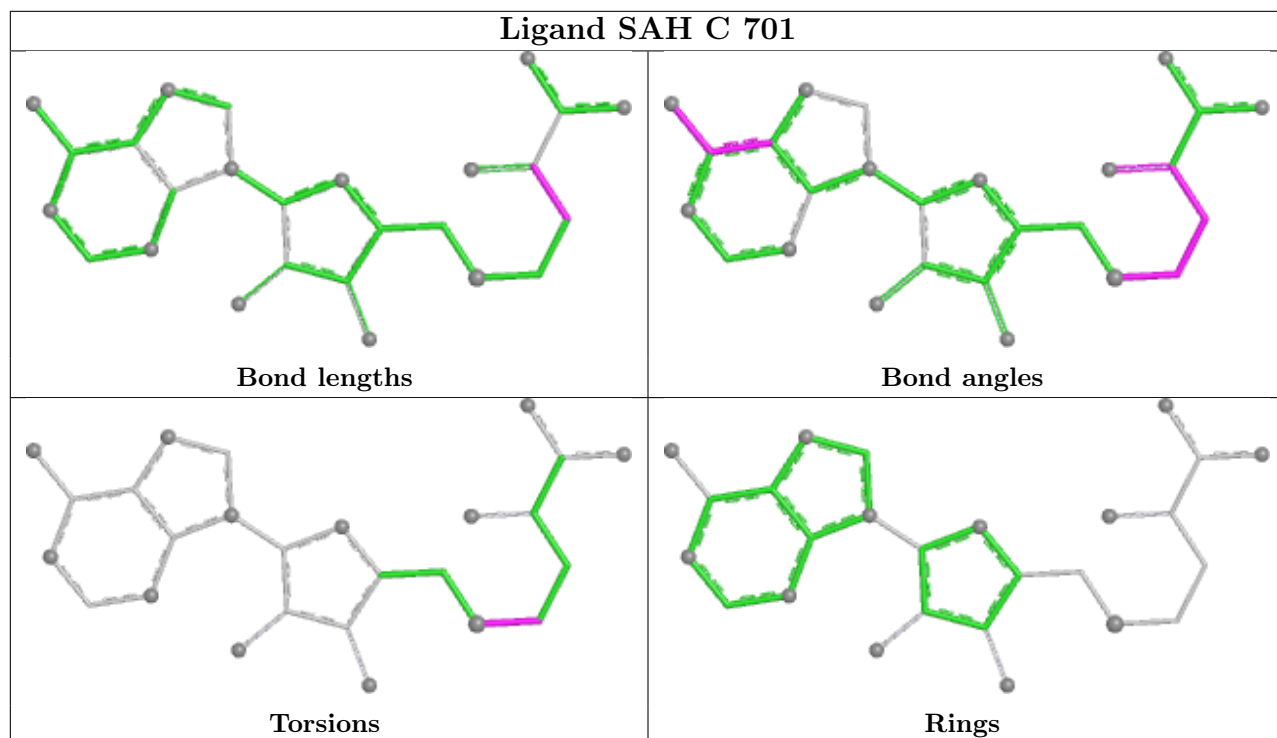
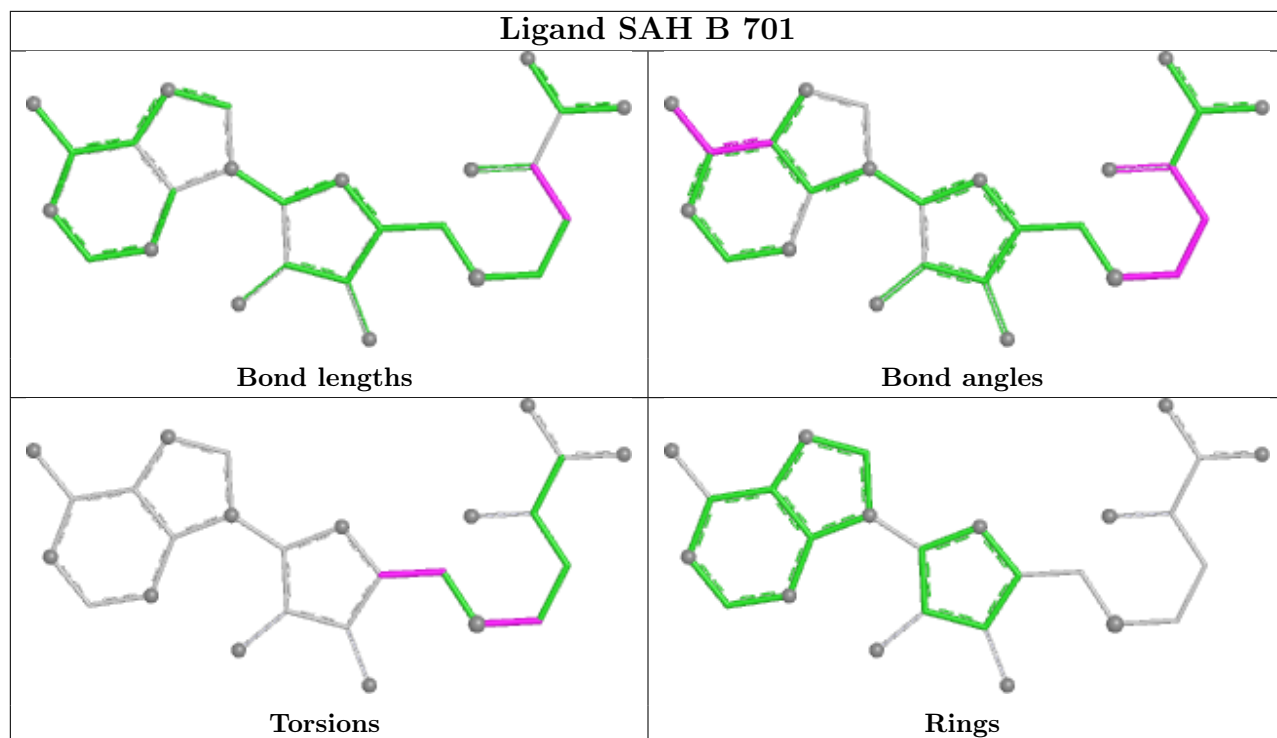
Mol	Chain	Res	Type	Atoms
3	B	701	SAH	O4'-C4'-C5'-SD
3	D	701	SAH	O4'-C4'-C5'-SD
3	D	701	SAH	CB-CG-SD-C5'
3	A	701	SAH	CB-CG-SD-C5'
3	B	701	SAH	CB-CG-SD-C5'
3	C	701	SAH	CB-CG-SD-C5'

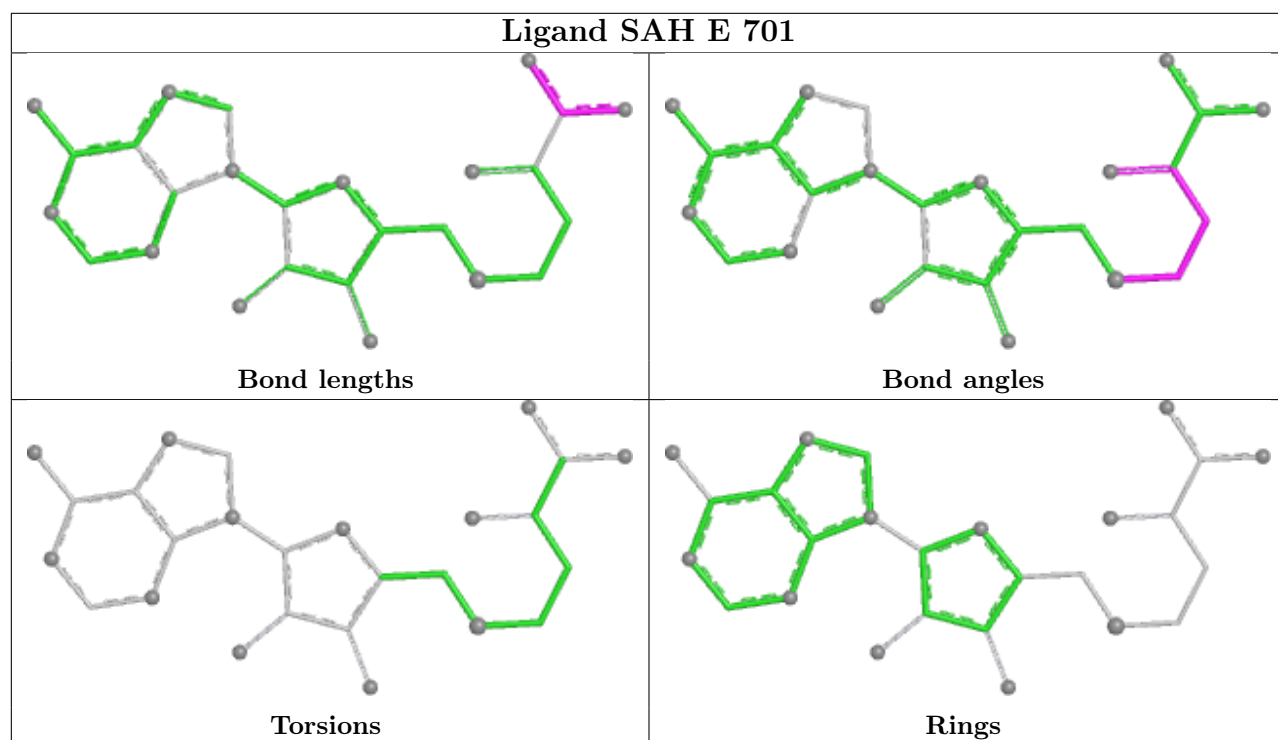
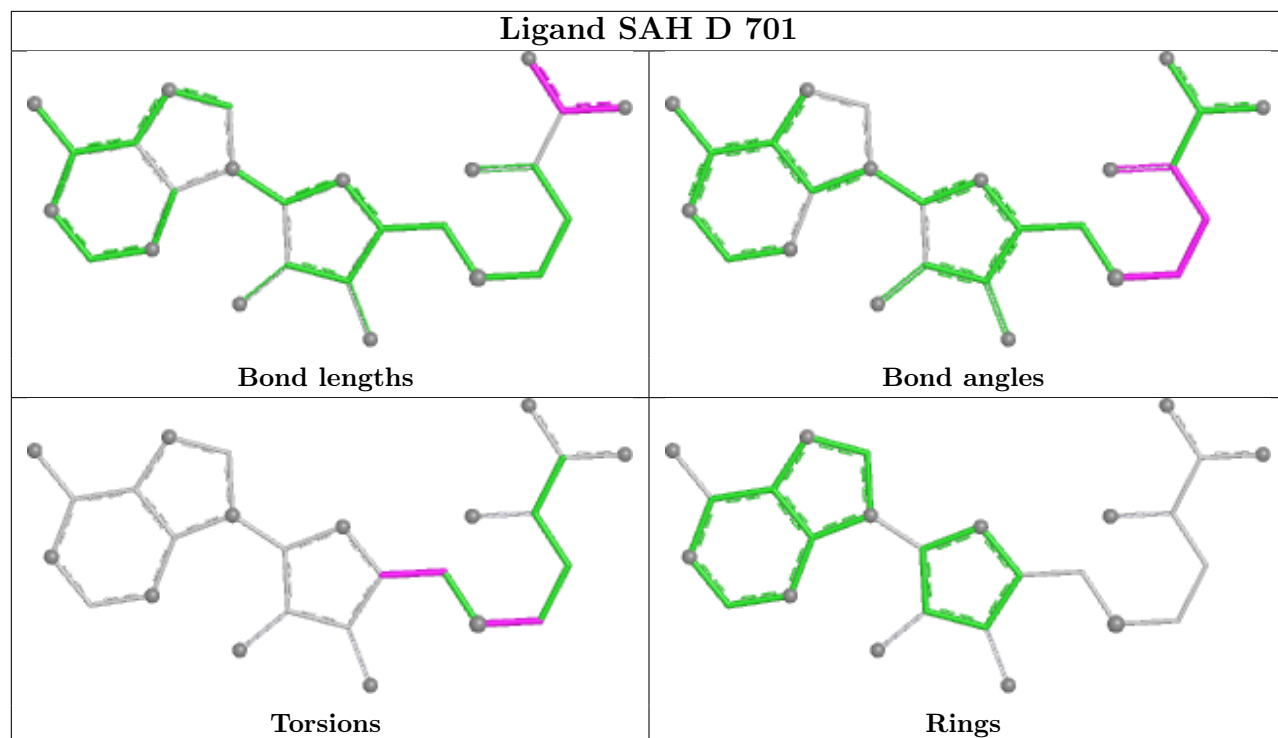
There are no ring outliers.

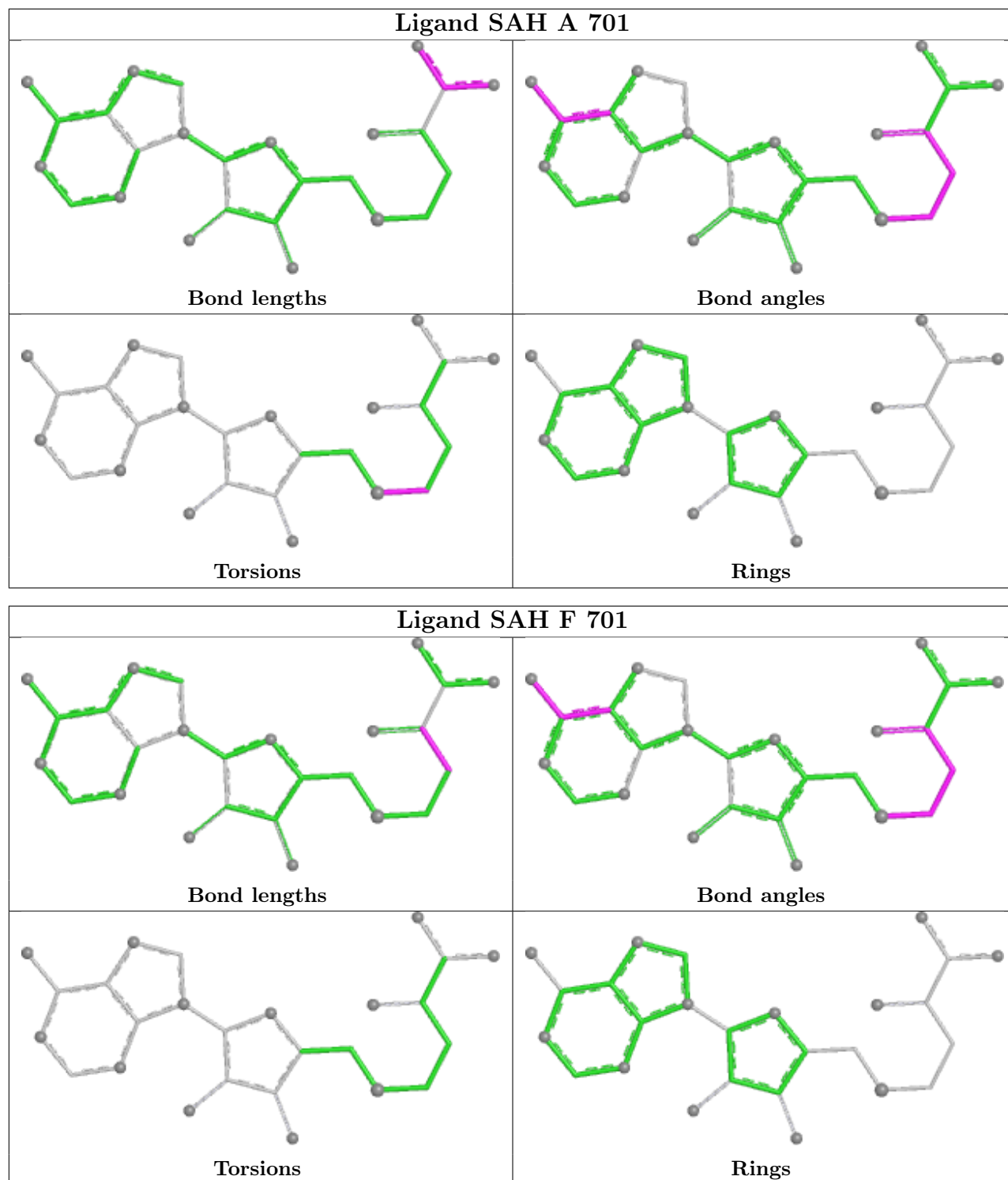
1 monomer is involved in 1 short contact:

Mol	Chain	Res	Type	Clashes	Symm-Clashes
3	E	701	SAH	1	0

The following is a two-dimensional graphical depiction of Mogul quality analysis of bond lengths, bond angles, torsion angles, and ring geometry for all instances of the Ligand of Interest. In addition, ligands with molecular weight > 250 and outliers as shown on the validation Tables will also be included. For torsion angles, if less than 5% of the Mogul distribution of torsion angles is within 10 degrees of the torsion angle in question, then that torsion angle is considered an outlier. Any bond that is central to one or more torsion angles identified as an outlier by Mogul will be highlighted in the graph. For rings, the root-mean-square deviation (RMSD) between the ring in question and similar rings identified by Mogul is calculated over all ring torsion angles. If the average RMSD is greater than 60 degrees and the minimal RMSD between the ring in question and any Mogul-identified rings is also greater than 60 degrees, then that ring is considered an outlier. The outliers are highlighted in purple. The color gray indicates Mogul did not find sufficient equivalents in the CSD to analyse the geometry.







5.7 Other polymers [\(i\)](#)

There are no such residues in this entry.

5.8 Polymer linkage issues

There are no chain breaks in this entry.

6 Fit of model and data [i](#)

6.1 Protein, DNA and RNA chains [i](#)

In the following table, the column labelled ‘#RSRZ > 2’ contains the number (and percentage) of RSRZ outliers, followed by percent RSRZ outliers for the chain as percentile scores relative to all X-ray entries and entries of similar resolution. The OWAB column contains the minimum, median, 95th percentile and maximum values of the occupancy-weighted average B-factor per residue. The column labelled ‘Q < 0.9’ lists the number of (and percentage) of residues with an average occupancy less than 0.9.

Mol	Chain	Analysed	<RSRZ>	#RSRZ>2	OWAB(Å ²)	Q<0.9
1	A	206/292 (70%)	0.39	9 (4%) 39 45	56, 91, 128, 138	0
1	B	206/292 (70%)	0.23	12 (5%) 30 34	51, 79, 118, 133	0
1	C	208/292 (71%)	0.54	17 (8%) 19 22	58, 95, 129, 140	0
1	D	208/292 (71%)	0.39	8 (3%) 44 50	59, 88, 126, 134	0
1	E	209/292 (71%)	0.38	6 (2%) 54 58	51, 81, 112, 120	0
1	F	207/292 (70%)	0.62	15 (7%) 23 26	65, 103, 141, 156	0
2	M	0/6	-	-	-	-
2	N	0/6	-	-	-	-
2	O	0/6	-	-	-	-
2	Q	0/6	-	-	-	-
2	R	0/6	-	-	-	-
All	All	1244/1782 (69%)	0.43	67 (5%) 32 36	51, 89, 130, 156	0

All (67) RSRZ outliers are listed below:

Mol	Chain	Res	Type	RSRZ
1	B	665	ALA	8.6
1	F	421	TYR	8.3
1	D	665	ALA	6.6
1	D	421	TYR	5.4
1	A	421	TYR	5.0
1	B	421	TYR	4.8
1	B	686	SER	4.4
1	E	686	SER	4.3
1	F	686	SER	4.3
1	A	422	TYR	4.3
1	B	431	ASP	4.1
1	D	633	ILE	3.6
1	C	492	SER	3.5
1	F	637	TYR	3.4

Continued on next page...

Continued from previous page...

Mol	Chain	Res	Type	RSRZ
1	D	628	THR	3.4
1	A	431	ASP	3.2
1	C	431	ASP	3.2
1	D	686	SER	3.1
1	C	422	TYR	3.0
1	B	633	ILE	3.0
1	F	620	TRP	3.0
1	F	617	PRO	2.9
1	E	490	TYR	2.9
1	F	649	SER	2.9
1	E	492	SER	2.9
1	B	628	THR	2.8
1	C	628	THR	2.8
1	A	656	VAL	2.7
1	F	628	THR	2.7
1	C	665	ALA	2.6
1	C	659	SER	2.6
1	F	412	LYS	2.6
1	B	649	SER	2.6
1	C	632	THR	2.6
1	F	640	ILE	2.5
1	A	646	GLN	2.5
1	D	663	LEU	2.5
1	F	629	LEU	2.5
1	C	490	TYR	2.5
1	C	489	HIS	2.5
1	C	619	PRO	2.5
1	C	440	GLU	2.4
1	D	622	SER	2.4
1	A	649	SER	2.4
1	C	646	GLN	2.4
1	F	437	LEU	2.4
1	C	637	TYR	2.4
1	A	642	LEU	2.4
1	F	488	ARG	2.4
1	D	489	HIS	2.3
1	B	637	TYR	2.3
1	E	664	VAL	2.3
1	C	565	ASP	2.3
1	E	422	TYR	2.3
1	E	655	ASP	2.3
1	A	637	TYR	2.2

Continued on next page...

Continued from previous page...

Mol	Chain	Res	Type	RSRZ
1	B	489	HIS	2.2
1	B	626	ARG	2.2
1	F	619	PRO	2.2
1	C	642	LEU	2.1
1	C	621	SER	2.1
1	C	660	SER	2.1
1	B	638	TYR	2.1
1	F	685	ARG	2.1
1	B	456	HIS	2.1
1	A	490	TYR	2.0
1	F	612	ILE	2.0

6.2 Non-standard residues in protein, DNA, RNA chains [i](#)

There are no non-standard protein/DNA/RNA residues in this entry.

6.3 Carbohydrates [i](#)

There are no monosaccharides in this entry.

6.4 Ligands [i](#)

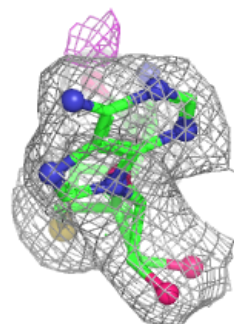
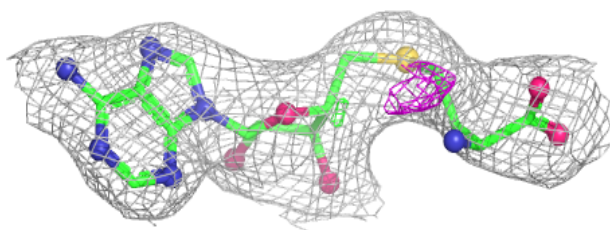
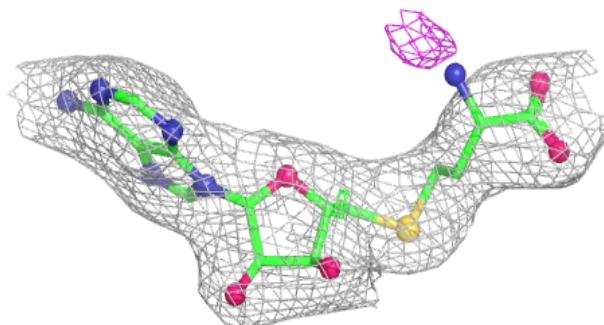
In the following table, the Atoms column lists the number of modelled atoms in the group and the number defined in the chemical component dictionary. The B-factors column lists the minimum, median, 95th percentile and maximum values of B factors of atoms in the group. The column labelled 'Q<0.9' lists the number of atoms with occupancy less than 0.9.

Mol	Type	Chain	Res	Atoms	RSCC	RSR	B-factors(Å ²)	Q<0.9
3	SAH	A	701	26/26	0.95	0.09	63,71,104,107	0
3	SAH	D	701	26/26	0.95	0.09	66,78,94,100	0
3	SAH	E	701	26/26	0.95	0.08	53,63,89,92	0
3	SAH	C	701	26/26	0.96	0.08	70,76,104,109	0
3	SAH	B	701	26/26	0.97	0.08	53,65,86,89	0
3	SAH	F	701	26/26	0.97	0.08	79,86,109,114	0

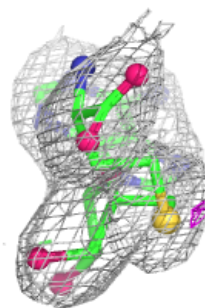
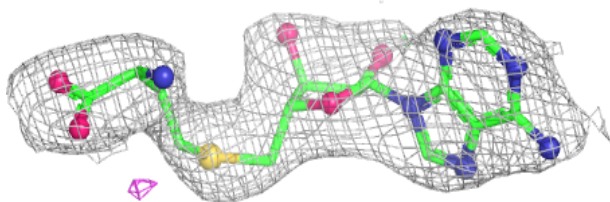
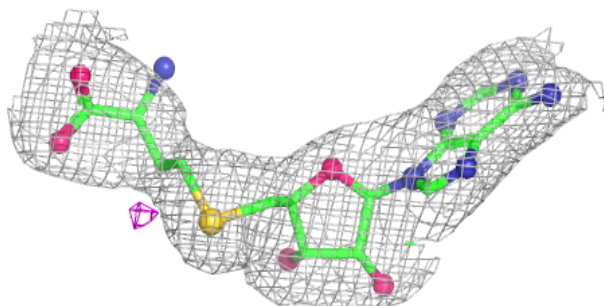
The following is a graphical depiction of the model fit to experimental electron density of all instances of the Ligand of Interest. In addition, ligands with molecular weight > 250 and outliers as shown on the geometry validation Tables will also be included. Each fit is shown from different orientation to approximate a three-dimensional view.

Electron density around SAH A 701:

$2mF_o-DF_c$ (at 0.7 rmsd) in gray
 mF_o-DF_c (at 3 rmsd) in purple (negative)
and green (positive)

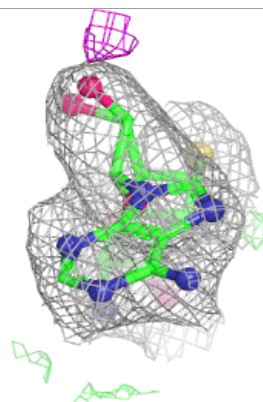
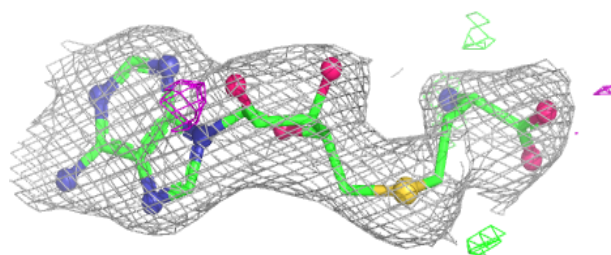
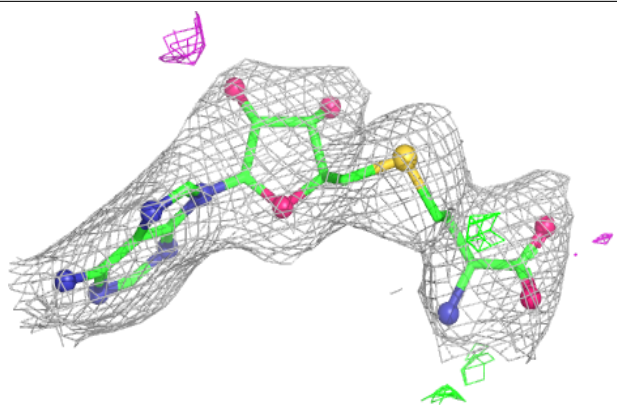
**Electron density around SAH D 701:**

$2mF_o-DF_c$ (at 0.7 rmsd) in gray
 mF_o-DF_c (at 3 rmsd) in purple (negative)
and green (positive)

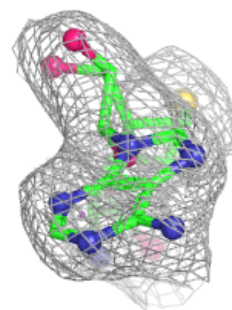
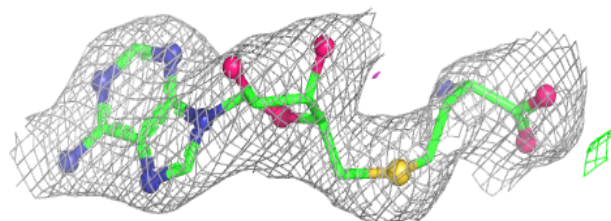
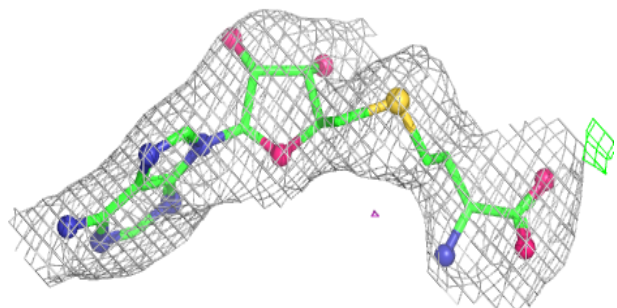


Electron density around SAH E 701:

$2mF_o-DF_c$ (at 0.7 rmsd) in gray
 mF_o-DF_c (at 3 rmsd) in purple (negative)
and green (positive)

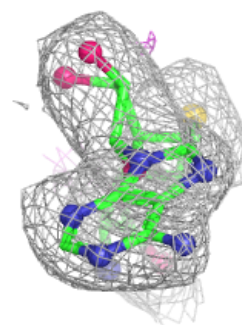
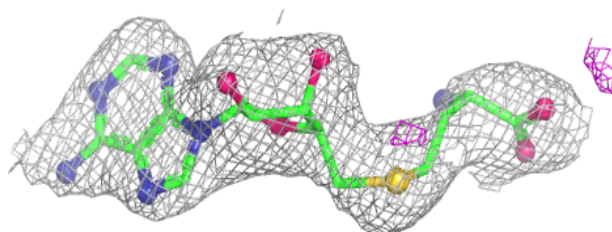
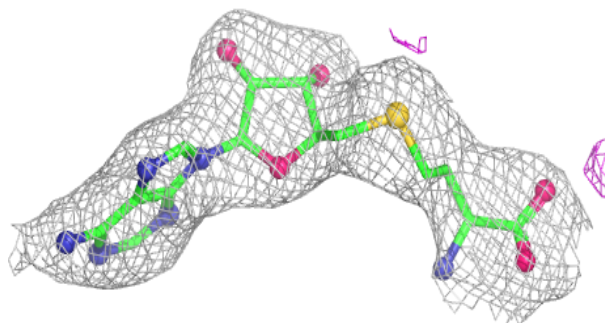
**Electron density around SAH C 701:**

$2mF_o-DF_c$ (at 0.7 rmsd) in gray
 mF_o-DF_c (at 3 rmsd) in purple (negative)
and green (positive)

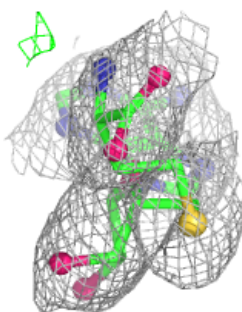
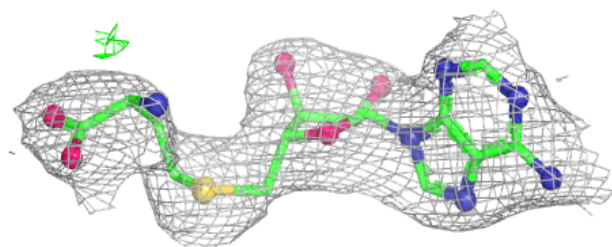
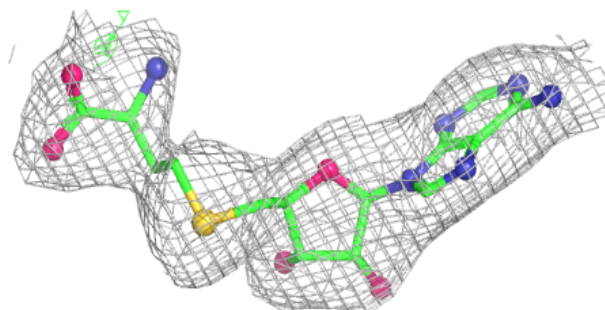


Electron density around SAH B 701:

$2mF_o-DF_c$ (at 0.7 rmsd) in gray
 mF_o-DF_c (at 3 rmsd) in purple (negative)
and green (positive)

**Electron density around SAH F 701:**

$2mF_o-DF_c$ (at 0.7 rmsd) in gray
 mF_o-DF_c (at 3 rmsd) in purple (negative)
and green (positive)



6.5 Other polymers [i](#)

There are no such residues in this entry.