



Full wwPDB X-ray Structure Validation Report ⓘ

Nov 2, 2024 – 11:30 AM EDT

PDB ID : 5SVK
Title : Crystal structure of the ATP-gated human P2X3 ion channel in the ATP-bound, open state
Authors : Mansoor, S.E.; Lu, W.; Oosterheert, W.; Shekhar, M.; Tajkhorshid, E.; Gouaux, E.
Deposited on : 2016-08-06
Resolution : 2.77 Å(reported)

This is a Full wwPDB X-ray Structure Validation Report for a publicly released PDB entry.

We welcome your comments at validation@mail.wwpdb.org

A user guide is available at

<https://www.wwpdb.org/validation/2017/XrayValidationReportHelp>

with specific help available everywhere you see the ⓘ symbol.

The types of validation reports are described at

<http://www.wwpdb.org/validation/2017/FAQs#types>.

The following versions of software and data (see [references ⓘ](#)) were used in the production of this report:

MolProbity : 4.02b-467
Mogul : 2022.3.0, CSD as543be (2022)
Xtriage (Phenix) : 1.20.1
EDS : 3.0
buster-report : 1.1.7 (2018)
Percentile statistics : 20231227.v01 (using entries in the PDB archive December 27th 2023)
CCP4 : 9.0.003 (Gargrove)
Density-Fitness : 1.0.11
Ideal geometry (proteins) : Engh & Huber (2001)
Ideal geometry (DNA, RNA) : Parkinson et al. (1996)
Validation Pipeline (wwPDB-VP) : 2.39

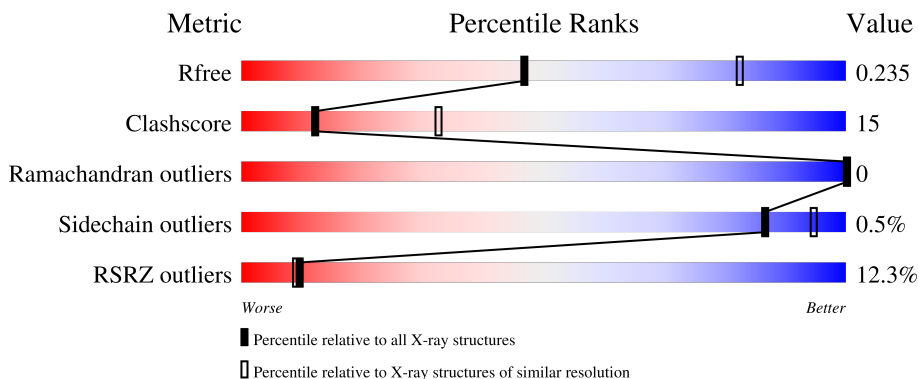
1 Overall quality at a glance

The following experimental techniques were used to determine the structure:

X-RAY DIFFRACTION

The reported resolution of this entry is 2.77 Å.

Percentile scores (ranging between 0-100) for global validation metrics of the entry are shown in the following graphic. The table shows the number of entries on which the scores are based.



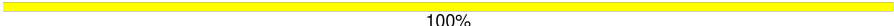

Metric	Whole archive (#Entries)	Similar resolution (#Entries, resolution range(Å))
R_{free}	164625	4924 (2.80-2.76)
Clashscore	180529	5458 (2.80-2.76)
Ramachandran outliers	177936	5386 (2.80-2.76)
Sidechain outliers	177891	5388 (2.80-2.76)
RSRZ outliers	164620	4926 (2.80-2.76)

The table below summarises the geometric issues observed across the polymeric chains and their fit to the electron density. The red, orange, yellow and green segments of the lower bar indicate the fraction of residues that contain outliers for ≥ 3 , 2, 1 and 0 types of geometric quality criteria respectively. A grey segment represents the fraction of residues that are not modelled. The numeric value for each fraction is indicated below the corresponding segment, with a dot representing fractions $\leq 5\%$. The upper red bar (where present) indicates the fraction of residues that have poor fit to the electron density. The numeric value is given above the bar.

Mol	Chain	Length	Quality of chain
1	A	363	 11% 72% 26% ..
1	B	363	 13% 75% 23% .
2	C	2	 100%
2	D	2	 50% 50%

Continued on next page...

Continued from previous page...

Mol	Chain	Length	Quality of chain
2	E	2	 100%
2	F	2	 50% 50%

2 Entry composition [i](#)

There are 7 unique types of molecules in this entry. The entry contains 5967 atoms, of which 130 are hydrogens and 0 are deuteriums.

In the tables below, the ZeroOcc column contains the number of atoms modelled with zero occupancy, the AltConf column contains the number of residues with at least one atom in alternate conformation and the Trace column contains the number of residues modelled with at most 2 atoms.

- Molecule 1 is a protein called P2X purinoceptor 3.

Mol	Chain	Residues	Atoms					ZeroOcc	AltConf	Trace
			Total	C	N	O	S			
1	A	357	2766	1786	456	506	18	0	0	0
1	B	357	2737	1772	450	497	18	0	0	0

There are 14 discrepancies between the modelled and reference sequences:

Chain	Residue	Modelled	Actual	Comment	Reference
A	2	GLY	-	expression tag	UNP P56373
A	3	SER	-	expression tag	UNP P56373
A	4	ARG	-	expression tag	UNP P56373
A	5	ALA	-	expression tag	UNP P56373
A	13	PRO	THR	engineered mutation	UNP P56373
A	15	VAL	SER	engineered mutation	UNP P56373
A	16	ILE	VAL	engineered mutation	UNP P56373
B	2	GLY	-	expression tag	UNP P56373
B	3	SER	-	expression tag	UNP P56373
B	4	ARG	-	expression tag	UNP P56373
B	5	ALA	-	expression tag	UNP P56373
B	13	PRO	THR	engineered mutation	UNP P56373
B	15	VAL	SER	engineered mutation	UNP P56373
B	16	ILE	VAL	engineered mutation	UNP P56373

- Molecule 2 is an oligosaccharide called alpha-D-glucopyranose-(1-4)-alpha-D-glucopyranose.



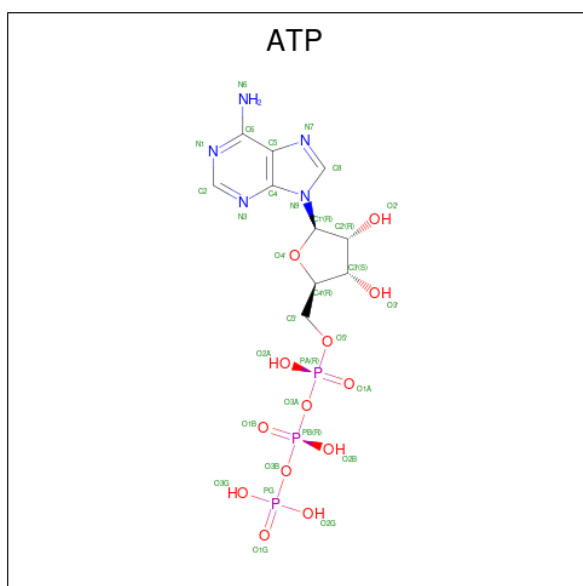
Mol	Chain	Residues	Atoms			ZeroOcc	AltConf	Trace
			Total	C	O			
2	C	2	23	12	11	0	0	0

Continued on next page...

Continued from previous page...

Mol	Chain	Residues	Atoms			ZeroOcc	AltConf	Trace
			Total	C	O			
2	D	2	23	12	11	0	0	0
2	E	2	23	12	11	0	0	0
2	F	2	23	12	11	0	0	0

- Molecule 3 is ADENOSINE-5'-TRIPHOSPHATE (three-letter code: ATP) (formula: $C_{10}H_{16}N_5O_{13}P_3$).



Mol	Chain	Residues	Atoms					ZeroOcc	AltConf	
			Total	C	H	N	O			P
3	A	1	43	10	12	5	13	3	0	0
3	B	1	43	10	12	5	13	3	0	0

- Molecule 4 is 2-acetamido-2-deoxy-beta-D-glucopyranose (three-letter code: NAG) (formula: $C_8H_{15}NO_6$).



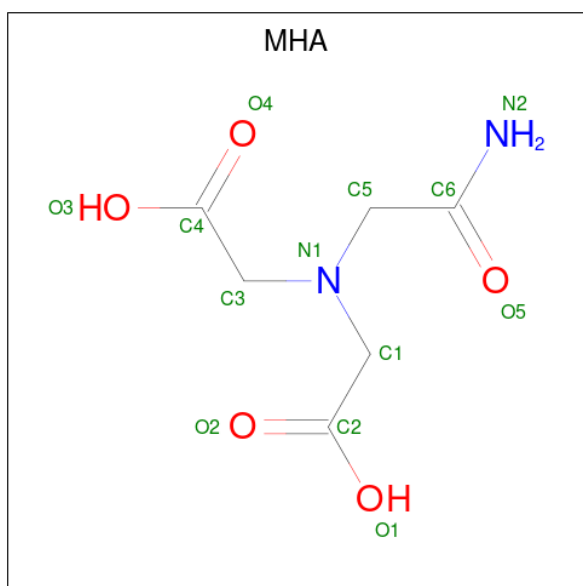
Mol	Chain	Residues	Atoms				ZeroOcc	AltConf	
			Total	C	H	N			O
4	A	1	Total	C	H	N	O	0	0
			28	8	14	1	5		
4	A	1	Total	C	H	N	O	0	0
			28	8	14	1	5		
4	A	1	Total	C	H	N	O	0	0
			28	8	14	1	5		
4	A	1	Total	C	H	N	O	0	0
			28	8	14	1	5		
4	B	1	Total	C	H	N	O	0	0
			28	8	14	1	5		
4	B	1	Total	C	H	N	O	0	0
			28	8	14	1	5		
4	B	1	Total	C	H	N	O	0	0
			28	8	14	1	5		

- Molecule 5 is 1,2-ETHANEDIOL (three-letter code: EDO) (formula: C₂H₆O₂).



Mol	Chain	Residues	Atoms			ZeroOcc	AltConf
5	A	1	Total	C	O	0	0
			4	2	2		
5	B	1	Total	C	O	0	0
			4	2	2		

- Molecule 6 is (CARBAMOYLMETHYL-CARBOXYMETHYL-AMINO)-ACETIC ACID (three-letter code: MHA) (formula: C₆H₁₀N₂O₅).



Mol	Chain	Residues	Atoms					ZeroOcc	AltConf
6	A	1	Total	C	H	N	O	0	0
			21	6	8	2	5		

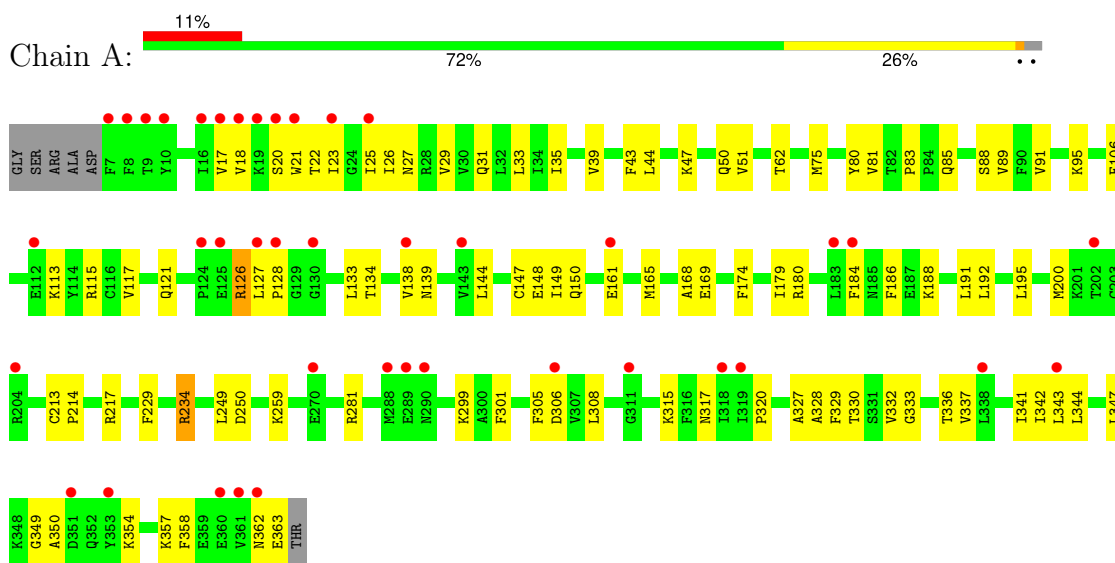
- Molecule 7 is water.

Mol	Chain	Residues	Atoms		ZeroOcc	AltConf
7	A	39	Total 39	O 39	0	0
7	B	22	Total 22	O 22	0	0

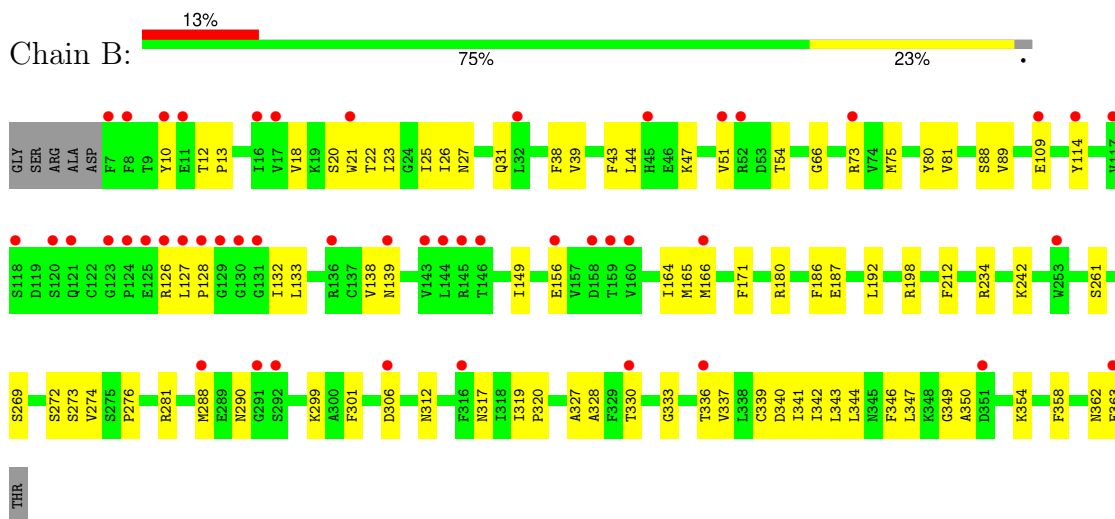
3 Residue-property plots

These plots are drawn for all protein, RNA, DNA and oligosaccharide chains in the entry. The first graphic for a chain summarises the proportions of the various outlier classes displayed in the second graphic. The second graphic shows the sequence view annotated by issues in geometry and electron density. Residues are color-coded according to the number of geometric quality criteria for which they contain at least one outlier: green = 0, yellow = 1, orange = 2 and red = 3 or more. A red dot above a residue indicates a poor fit to the electron density ($RSRZ > 2$). Stretches of 2 or more consecutive residues without any outlier are shown as a green connector. Residues present in the sample, but not in the model, are shown in grey.

- Molecule 1: P2X purinoceptor 3



- Molecule 1: P2X purinoceptor 3



- Molecule 2: alpha-D-glucopyranose-(1-4)-alpha-D-glucopyranose



GLC1
GLC2

- Molecule 2: alpha-D-glucopyranose-(1-4)-alpha-D-glucopyranose

Chain D:  50% 50%

GLC1
GLC2

- Molecule 2: alpha-D-glucopyranose-(1-4)-alpha-D-glucopyranose

Chain E:  100%

GLC1
GLC2

- Molecule 2: alpha-D-glucopyranose-(1-4)-alpha-D-glucopyranose

Chain F:  50% 50%

GLC1
GLC2

4 Data and refinement statistics i

Property	Value	Source
Space group	P 21 3	Depositor
Cell constants a, b, c, α , β , γ	173.15Å 173.15Å 173.15Å 90.00° 90.00° 90.00°	Depositor
Resolution (Å)	43.29 – 2.77 43.29 – 2.77	Depositor EDS
% Data completeness (in resolution range)	93.9 (43.29-2.77) 99.2 (43.29-2.77)	Depositor EDS
R_{merge}	(Not available)	Depositor
R_{sym}	(Not available)	Depositor
$\langle I/\sigma(I) \rangle$ ¹	1.53 (at 2.77Å)	Xtrriage
Refinement program	PHENIX (1.10_2142: ???)	Depositor
R, R_{free}	0.201 , 0.228 0.208 , 0.235	Depositor DCC
R_{free} test set	2185 reflections (5.00%)	wwPDB-VP
Wilson B-factor (Å ²)	78.0	Xtrriage
Anisotropy	0.000	Xtrriage
Bulk solvent k_{sol} (e/Å ³), B_{sol} (Å ²)	0.30 , 55.1	EDS
L-test for twinning ²	$\langle L \rangle = 0.51$, $\langle L^2 \rangle = 0.34$	Xtrriage
Estimated twinning fraction	0.024 for l,-k,h	Xtrriage
F_o, F_c correlation	0.94	EDS
Total number of atoms	5967	wwPDB-VP
Average B, all atoms (Å ²)	90.0	wwPDB-VP

Xtrriage's analysis on translational NCS is as follows: *The largest off-origin peak in the Patterson function is 2.59% of the height of the origin peak. No significant pseudotranslation is detected.*

¹Intensities estimated from amplitudes.

²Theoretical values of $\langle |L| \rangle$, $\langle L^2 \rangle$ for acentric reflections are 0.5, 0.333 respectively for untwinned datasets, and 0.375, 0.2 for perfectly twinned datasets.

5 Model quality

5.1 Standard geometry

Bond lengths and bond angles in the following residue types are not validated in this section: GLC, ATP, NAG, EDO, MHA

The Z score for a bond length (or angle) is the number of standard deviations the observed value is removed from the expected value. A bond length (or angle) with $|Z| > 5$ is considered an outlier worth inspection. RMSZ is the root-mean-square of all Z scores of the bond lengths (or angles).

Mol	Chain	Bond lengths		Bond angles	
		RMSZ	# Z >5	RMSZ	# Z >5
1	A	0.27	0/2828	0.49	0/3838
1	B	0.27	0/2800	0.49	0/3804
All	All	0.27	0/5628	0.49	0/7642

There are no bond length outliers.

There are no bond angle outliers.

There are no chirality outliers.

There are no planarity outliers.

5.2 Too-close contacts

In the following table, the Non-H and H(model) columns list the number of non-hydrogen atoms and hydrogen atoms in the chain respectively. The H(added) column lists the number of hydrogen atoms added and optimized by MolProbity. The Clashes column lists the number of clashes within the asymmetric unit, whereas Symm-Clashes lists symmetry-related clashes.

Mol	Chain	Non-H	H(model)	H(added)	Clashes	Symm-Clashes
1	A	2766	0	2735	93	1
1	B	2737	0	2670	79	2
2	C	23	0	21	0	0
2	D	23	0	21	2	0
2	E	23	0	21	1	0
2	F	23	0	21	0	0
3	A	31	12	12	1	0
3	B	31	12	12	0	0
4	A	56	56	52	2	0
4	B	42	42	39	1	0
5	A	4	0	6	0	0

Continued on next page...

Continued from previous page...

Mol	Chain	Non-H	H(model)	H(added)	Clashes	Symm-Clashes
5	B	4	0	6	2	0
6	A	13	8	8	0	0
7	A	39	0	0	1	0
7	B	22	0	0	0	0
All	All	5837	130	5624	174	2

The all-atom clashscore is defined as the number of clashes found per 1000 atoms (including hydrogen atoms). The all-atom clashscore for this structure is 15.

All (174) close contacts within the same asymmetric unit are listed below, sorted by their clash magnitude.

Atom-1	Atom-2	Interatomic distance (Å)	Clash overlap (Å)
1:B:343:LEU:HD12	1:B:344:LEU:HD12	1.49	0.93
1:A:127:LEU:HD23	1:A:128:PRO:HD3	1.51	0.93
1:A:343:LEU:HD12	1:A:344:LEU:HD12	1.47	0.92
1:A:23:ILE:HA	1:A:26:ILE:HG22	1.56	0.85
1:B:23:ILE:HA	1:B:26:ILE:HG22	1.58	0.85
1:A:89:VAL:HG22	1:A:306:ASP:HB3	1.60	0.80
1:B:75:MET:HB2	1:B:165:MET:HE1	1.63	0.80
1:B:26:ILE:CD1	1:B:342:ILE:HD13	2.13	0.79
1:A:343:LEU:HA	1:A:347:LEU:HD22	1.64	0.78
1:A:26:ILE:HD11	1:A:342:ILE:HD13	1.68	0.75
1:B:23:ILE:HG12	1:B:347:LEU:HD21	1.66	0.75
1:B:133:LEU:HD13	1:B:149:ILE:HG22	1.66	0.75
1:A:343:LEU:CD1	1:A:344:LEU:HD12	2.16	0.74
1:A:23:ILE:HA	1:A:26:ILE:CG2	2.18	0.74
1:B:26:ILE:HD11	1:B:342:ILE:HD13	1.69	0.74
1:A:89:VAL:HG22	1:A:306:ASP:CB	2.16	0.73
1:A:337:VAL:O	1:A:341:ILE:HG12	1.91	0.71
1:B:337:VAL:O	1:B:341:ILE:HG12	1.91	0.70
1:A:75:MET:HG3	1:A:165:MET:HE3	1.73	0.70
1:B:343:LEU:CD1	1:B:344:LEU:HD12	2.19	0.70
1:A:23:ILE:CG1	1:A:347:LEU:HD21	2.22	0.69
1:A:138:VAL:HG12	1:A:139:ASN:H	1.59	0.67
1:B:288:MET:CE	5:B:407:EDO:H22	2.24	0.67
1:B:23:ILE:CG1	1:B:347:LEU:HD21	2.23	0.67
2:E:1:GLC:O3	2:E:2:GLC:O2	2.06	0.66
1:A:26:ILE:CD1	1:A:342:ILE:HD13	2.25	0.66
1:A:88:SER:O	1:A:306:ASP:HA	1.95	0.66
1:B:89:VAL:HG22	1:B:306:ASP:HB3	1.78	0.65
1:A:23:ILE:HD11	1:A:347:LEU:HD21	1.77	0.65

Continued on next page...

Continued from previous page...

Atom-1	Atom-2	Interatomic distance (Å)	Clash overlap (Å)
1:B:23:ILE:HA	1:B:26:ILE:CG2	2.25	0.65
1:A:23:ILE:HG13	1:A:343:LEU:HD23	1.79	0.64
1:B:288:MET:HE3	5:B:407:EDO:H22	1.78	0.64
1:A:51:VAL:HG23	1:A:317:ASN:HB3	1.81	0.63
1:A:350:ALA:O	1:A:354:LYS:HG3	1.98	0.63
1:A:51:VAL:HG23	1:A:317:ASN:CB	2.30	0.62
1:A:281:ARG:NH2	3:A:401:ATP:O3G	2.32	0.62
1:A:117:VAL:HG12	1:A:121:GLN:OE1	2.00	0.62
1:A:23:ILE:CA	1:A:26:ILE:HG22	2.29	0.61
1:B:23:ILE:HG13	1:B:343:LEU:HD23	1.81	0.61
1:A:327:ALA:O	1:A:330:THR:HG22	2.00	0.61
1:B:75:MET:HG3	1:B:165:MET:HE3	1.82	0.61
1:B:343:LEU:HD22	1:B:347:LEU:HD22	1.82	0.61
1:B:127:LEU:N	1:B:128:PRO:HD2	2.16	0.61
1:A:27:ASN:O	1:A:31:GLN:HG3	2.00	0.60
1:B:26:ILE:HD13	1:B:342:ILE:HD13	1.82	0.60
1:A:127:LEU:N	1:A:128:PRO:HD2	2.16	0.60
1:A:113:LYS:O	1:A:126:ARG:NH1	2.35	0.60
1:A:342:ILE:O	1:A:347:LEU:HD13	2.02	0.60
1:B:18:VAL:HG12	1:B:20:SER:H	1.65	0.60
1:A:50:GLN:HB2	1:A:315:LYS:O	2.02	0.59
1:A:138:VAL:HG12	1:A:139:ASN:N	2.15	0.59
1:B:242:LYS:HE3	1:B:261:SER:HB2	1.83	0.59
1:B:75:MET:HB2	1:B:165:MET:CE	2.31	0.59
1:A:299:LYS:HE2	1:A:301:PHE:CZ	2.38	0.59
1:A:362:ASN:O	1:A:363:GLU:HB2	2.03	0.59
1:A:191:LEU:HD23	1:A:214:PRO:HG3	1.83	0.58
1:A:343:LEU:HD12	1:A:344:LEU:CD1	2.26	0.58
1:B:88:SER:O	1:B:306:ASP:HA	2.03	0.58
1:A:18:VAL:HG12	1:A:20:SER:H	1.69	0.58
1:B:272:SER:OG	1:B:274:VAL:HG12	2.03	0.58
1:A:328:ALA:O	1:A:332:VAL:HG13	2.03	0.57
1:B:327:ALA:O	1:B:330:THR:HG22	2.04	0.57
1:B:164:ILE:CG2	1:B:234:ARG:HG2	2.35	0.57
1:B:180:ARG:HB2	1:B:187:GLU:HG2	1.87	0.56
1:B:51:VAL:HG23	1:B:317:ASN:HB3	1.88	0.56
1:A:357:LYS:HD3	1:A:358:PHE:CE1	2.41	0.56
1:A:329:PHE:O	1:A:332:VAL:HG22	2.05	0.56
1:A:127:LEU:HD23	1:A:128:PRO:CD	2.31	0.56
1:A:21:TRP:O	1:A:25:ILE:HG23	2.05	0.56
1:A:35:ILE:HD11	1:A:332:VAL:HG11	1.87	0.56

Continued on next page...

Continued from previous page...

Atom-1	Atom-2	Interatomic distance (Å)	Clash overlap (Å)
1:A:23:ILE:CD1	1:A:347:LEU:HD21	2.35	0.55
1:A:50:GLN:HB2	1:A:315:LYS:C	2.27	0.55
1:A:327:ALA:HA	1:A:330:THR:HG22	1.89	0.54
1:B:22:THR:O	1:B:25:ILE:HG13	2.07	0.54
1:B:43:PHE:O	1:B:47:LYS:HA	2.06	0.54
1:A:342:ILE:HG22	1:A:347:LEU:HD11	1.88	0.54
1:B:138:VAL:HG12	1:B:139:ASN:N	2.23	0.54
1:A:127:LEU:N	1:A:128:PRO:CD	2.71	0.54
1:B:127:LEU:N	1:B:128:PRO:CD	2.71	0.54
1:B:138:VAL:HG12	1:B:139:ASN:H	1.73	0.54
1:A:75:MET:HB2	1:A:165:MET:HE1	1.89	0.54
1:B:327:ALA:HA	1:B:330:THR:HG22	1.89	0.54
1:B:109:GLU:HG2	1:B:114:TYR:CD1	2.43	0.54
1:B:343:LEU:HD12	1:B:344:LEU:CD1	2.31	0.53
1:B:39:VAL:O	1:B:44:LEU:HG	2.08	0.53
1:B:299:LYS:HE2	1:B:301:PHE:CZ	2.43	0.53
1:B:344:LEU:HD21	1:B:358:PHE:HE1	1.74	0.53
1:A:179:ILE:HG13	1:A:188:LYS:O	2.08	0.53
1:B:73:ARG:NH1	1:B:75:MET:SD	2.82	0.52
1:B:23:ILE:CA	1:B:26:ILE:HG22	2.37	0.52
1:B:180:ARG:HA	1:B:186:PHE:O	2.09	0.52
1:A:250:ASP:HB3	2:D:1:GLC:H3	1.91	0.52
1:A:343:LEU:HD22	1:A:347:LEU:HD22	1.92	0.52
1:B:290:ASN:ND2	4:B:404:NAG:O7	2.43	0.52
1:A:22:THR:O	1:A:25:ILE:HG13	2.09	0.52
1:B:156:GLU:OE2	1:B:281:ARG:NH1	2.42	0.52
1:B:350:ALA:O	1:B:354:LYS:HG3	2.09	0.51
1:A:39:VAL:O	1:A:44:LEU:HG	2.10	0.50
1:A:133:LEU:HD23	1:A:149:ILE:HG22	1.93	0.50
1:A:191:LEU:HD23	1:A:214:PRO:CG	2.41	0.50
1:B:89:VAL:HG22	1:B:306:ASP:CB	2.41	0.50
1:B:12:THR:OG1	1:B:13:PRO:HD2	2.11	0.50
1:B:27:ASN:O	1:B:31:GLN:HG3	2.12	0.49
1:A:184:PHE:CD2	1:A:249:LEU:HD12	2.47	0.49
1:A:192:LEU:HD13	4:A:403:NAG:H5	1.94	0.49
4:A:402:NAG:H61	1:B:273:SER:HB2	1.93	0.49
1:A:347:LEU:C	1:A:349:GLY:H	2.16	0.49
1:B:126:ARG:C	1:B:128:PRO:HD2	2.33	0.49
1:A:43:PHE:O	1:A:47:LYS:HA	2.13	0.49
1:A:317:ASN:OD1	1:A:320:PRO:HD2	2.12	0.49
1:B:66:GLY:HA3	1:B:171:PHE:CD1	2.48	0.48

Continued on next page...

Continued from previous page...

Atom-1	Atom-2	Interatomic distance (Å)	Clash overlap (Å)
1:B:281:ARG:NH1	1:B:299:LYS:HD2	2.29	0.48
1:B:333:GLY:O	1:B:336:THR:HG23	2.14	0.48
1:B:336:THR:O	1:B:340:ASP:HB2	2.13	0.48
1:B:80:TYR:CE1	1:B:81:VAL:HG23	2.49	0.48
1:B:132:ILE:HD12	1:B:132:ILE:N	2.29	0.48
1:A:75:MET:HG3	1:A:165:MET:CE	2.42	0.47
1:B:21:TRP:O	1:B:25:ILE:HG23	2.14	0.47
1:A:174:PHE:CE1	1:A:214:PRO:HB2	2.50	0.47
1:B:269:SER:HB3	1:B:276:PRO:O	2.15	0.47
1:B:343:LEU:C	1:B:343:LEU:HD13	2.35	0.47
1:A:127:LEU:CD2	1:A:128:PRO:HD3	2.34	0.46
1:B:180:ARG:HD2	1:B:187:GLU:OE2	2.16	0.46
1:A:138:VAL:CG1	1:A:139:ASN:H	2.26	0.46
1:A:115:ARG:HG3	1:A:144:LEU:CD1	2.46	0.46
1:A:343:LEU:HA	1:A:347:LEU:CD2	2.39	0.46
1:A:195:LEU:HD21	1:A:200:MET:SD	2.56	0.45
1:A:134:THR:OG1	1:A:148:GLU:HB3	2.15	0.45
1:B:347:LEU:C	1:B:349:GLY:H	2.19	0.45
1:A:95:LYS:HB3	1:A:301:PHE:HB2	1.98	0.45
1:A:80:TYR:CE1	1:A:81:VAL:HG23	2.52	0.45
1:A:161:GLU:OE2	1:A:234:ARG:HG2	2.17	0.45
1:B:75:MET:HG3	1:B:165:MET:CE	2.46	0.45
1:B:344:LEU:HD21	1:B:358:PHE:CE1	2.52	0.45
1:B:344:LEU:O	1:B:350:ALA:HB1	2.17	0.44
1:B:51:VAL:HG23	1:B:317:ASN:CB	2.47	0.44
1:A:29:VAL:O	1:A:33:LEU:HG	2.18	0.44
1:B:346:PHE:C	1:B:347:LEU:HD12	2.37	0.44
1:B:133:LEU:HD13	1:B:149:ILE:CG2	2.43	0.44
1:B:339:CYS:HA	1:B:342:ILE:HD12	2.00	0.44
1:A:169:GLU:HG2	1:A:217:ARG:NH2	2.33	0.44
1:A:327:ALA:C	1:A:330:THR:HG22	2.39	0.43
1:B:54:THR:HG22	1:B:312:ASN:CB	2.48	0.43
1:B:80:TYR:CD1	1:B:81:VAL:HG23	2.53	0.43
1:B:164:ILE:HG21	1:B:234:ARG:HG2	2.00	0.43
1:A:62:THR:HA	1:A:174:PHE:O	2.18	0.43
1:A:83:PRO:HB2	1:A:85:GLN:OE1	2.18	0.43
1:A:259:LYS:HG3	7:A:525:HOH:O	2.18	0.43
1:B:164:ILE:HD11	1:B:166:MET:SD	2.59	0.43
1:A:106:PHE:CE1	1:A:150:GLN:HB2	2.54	0.42
1:B:27:ASN:HA	1:B:339:CYS:SG	2.59	0.42
1:B:327:ALA:HA	1:B:330:THR:CG2	2.48	0.42

Continued on next page...

Continued from previous page...

Atom-1	Atom-2	Interatomic distance (Å)	Clash overlap (Å)
1:B:327:ALA:C	1:B:330:THR:HG22	2.39	0.42
1:A:23:ILE:HG12	1:A:347:LEU:HD21	2.00	0.42
1:A:133:LEU:HD22	1:A:147:CYS:HB3	2.00	0.42
1:A:80:TYR:CD1	1:A:81:VAL:HG23	2.54	0.42
1:A:333:GLY:O	1:A:336:THR:HG23	2.19	0.42
1:B:319:ILE:HB	1:B:320:PRO:CD	2.50	0.42
1:A:180:ARG:HA	1:A:186:PHE:O	2.18	0.42
1:A:89:VAL:HA	1:A:305:PHE:O	2.19	0.42
1:A:191:LEU:CD2	1:A:214:PRO:CG	2.98	0.42
1:A:17:VAL:O	1:A:17:VAL:HG12	2.19	0.42
1:A:81:VAL:HA	1:A:91:VAL:O	2.20	0.42
2:D:1:GLC:H1	2:D:1:GLC:H61	1.77	0.42
1:A:115:ARG:HG3	1:A:144:LEU:HD11	2.02	0.41
1:A:213:CYS:HA	1:A:214:PRO:HD3	1.92	0.41
1:B:362:ASN:O	1:B:363:GLU:CB	2.68	0.41
1:A:89:VAL:HG22	1:A:306:ASP:HB2	2.00	0.41
1:A:149:ILE:C	1:A:149:ILE:HD12	2.41	0.41
1:A:75:MET:HB2	1:A:165:MET:CE	2.50	0.40
1:B:38:PHE:CE2	1:B:328:ALA:HA	2.55	0.40
1:A:138:VAL:CG1	1:A:139:ASN:N	2.82	0.40
1:A:168:ALA:HB3	1:A:229:PHE:HZ	1.86	0.40
1:B:192:LEU:HD11	1:B:212:PHE:CD1	2.57	0.40

All (2) symmetry-related close contacts are listed below. The label for Atom-2 includes the symmetry operator and encoded unit-cell translations to be applied.

Atom-1	Atom-2	Interatomic distance (Å)	Clash overlap (Å)
1:A:200:MET:O	1:B:198:ARG:NH2[6_577]	2.08	0.12
1:B:10:TYR:OH	1:B:340:ASP:OD1[12_774]	2.17	0.03

5.3 Torsion angles [i](#)

5.3.1 Protein backbone [i](#)

In the following table, the Percentiles column shows the percent Ramachandran outliers of the chain as a percentile score with respect to all X-ray entries followed by that with respect to entries of similar resolution.

The Analysed column shows the number of residues for which the backbone conformation was analysed, and the total number of residues.

Mol	Chain	Analysed	Favoured	Allowed	Outliers	Percentiles	
1	A	355/363 (98%)	346 (98%)	9 (2%)	0	100	100
1	B	355/363 (98%)	346 (98%)	9 (2%)	0	100	100
All	All	710/726 (98%)	692 (98%)	18 (2%)	0	100	100

There are no Ramachandran outliers to report.

5.3.2 Protein sidechains [i](#)

In the following table, the Percentiles column shows the percent sidechain outliers of the chain as a percentile score with respect to all X-ray entries followed by that with respect to entries of similar resolution.

The Analysed column shows the number of residues for which the sidechain conformation was analysed, and the total number of residues.

Mol	Chain	Analysed	Rotameric	Outliers	Percentiles	
1	A	302/318 (95%)	299 (99%)	3 (1%)	73	89
1	B	291/318 (92%)	291 (100%)	0	100	100
All	All	593/636 (93%)	590 (100%)	3 (0%)	86	95

All (3) residues with a non-rotameric sidechain are listed below:

Mol	Chain	Res	Type
1	A	126	ARG
1	A	234	ARG
1	A	308	LEU

Sometimes sidechains can be flipped to improve hydrogen bonding and reduce clashes. There are no such sidechains identified.

5.3.3 RNA [i](#)

There are no RNA molecules in this entry.

5.4 Non-standard residues in protein, DNA, RNA chains [i](#)

There are no non-standard protein/DNA/RNA residues in this entry.

5.5 Carbohydrates i

8 monosaccharides are modelled in this entry.

In the following table, the Counts columns list the number of bonds (or angles) for which Mogul statistics could be retrieved, the number of bonds (or angles) that are observed in the model and the number of bonds (or angles) that are defined in the Chemical Component Dictionary. The Link column lists molecule types, if any, to which the group is linked. The Z score for a bond length (or angle) is the number of standard deviations the observed value is removed from the expected value. A bond length (or angle) with $|Z| > 2$ is considered an outlier worth inspection. RMSZ is the root-mean-square of all Z scores of the bond lengths (or angles).

Mol	Type	Chain	Res	Link	Bond lengths			Bond angles		
					Counts	RMSZ	# Z > 2	Counts	RMSZ	# Z > 2
2	GLC	C	1	2	12,12,12	0.50	0	17,17,17	0.48	0
2	GLC	C	2	2	11,11,12	0.62	0	15,15,17	0.59	0
2	GLC	D	1	2	12,12,12	0.51	0	17,17,17	0.56	0
2	GLC	D	2	2	11,11,12	0.58	0	15,15,17	0.77	0
2	GLC	E	1	2	12,12,12	0.50	0	17,17,17	0.48	0
2	GLC	E	2	2	11,11,12	0.58	0	15,15,17	0.58	0
2	GLC	F	1	2	12,12,12	0.50	0	17,17,17	0.48	0
2	GLC	F	2	2	11,11,12	0.64	0	15,15,17	1.47	1 (6%)

In the following table, the Chirals column lists the number of chiral outliers, the number of chiral centers analysed, the number of these observed in the model and the number defined in the Chemical Component Dictionary. Similar counts are reported in the Torsion and Rings columns. '-' means no outliers of that kind were identified.

Mol	Type	Chain	Res	Link	Chirals	Torsions	Rings
2	GLC	C	1	2	-	1/2/22/22	0/1/1/1
2	GLC	C	2	2	-	2/2/19/22	0/1/1/1
2	GLC	D	1	2	-	0/2/22/22	0/1/1/1
2	GLC	D	2	2	-	0/2/19/22	0/1/1/1
2	GLC	E	1	2	-	1/2/22/22	0/1/1/1
2	GLC	E	2	2	-	1/2/19/22	0/1/1/1
2	GLC	F	1	2	-	0/2/22/22	0/1/1/1
2	GLC	F	2	2	-	0/2/19/22	0/1/1/1

There are no bond length outliers.

All (1) bond angle outliers are listed below:

Mol	Chain	Res	Type	Atoms	Z	Observed(°)	Ideal(°)
2	F	2	GLC	C1-C2-C3	4.50	116.19	109.64

There are no chirality outliers.

All (5) torsion outliers are listed below:

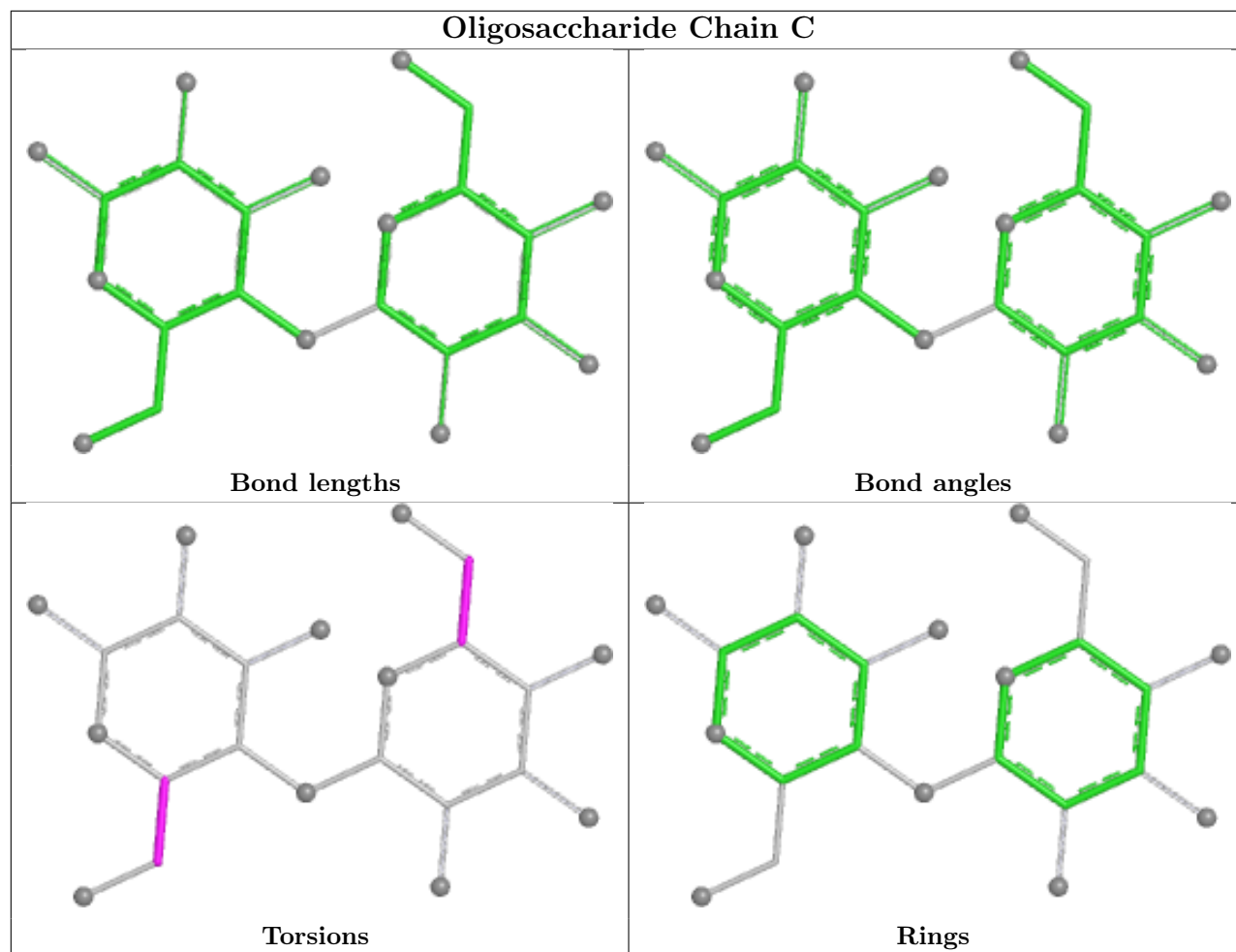
Mol	Chain	Res	Type	Atoms
2	C	2	GLC	O5-C5-C6-O6
2	C	2	GLC	C4-C5-C6-O6
2	E	2	GLC	O5-C5-C6-O6
2	C	1	GLC	O5-C5-C6-O6
2	E	1	GLC	O5-C5-C6-O6

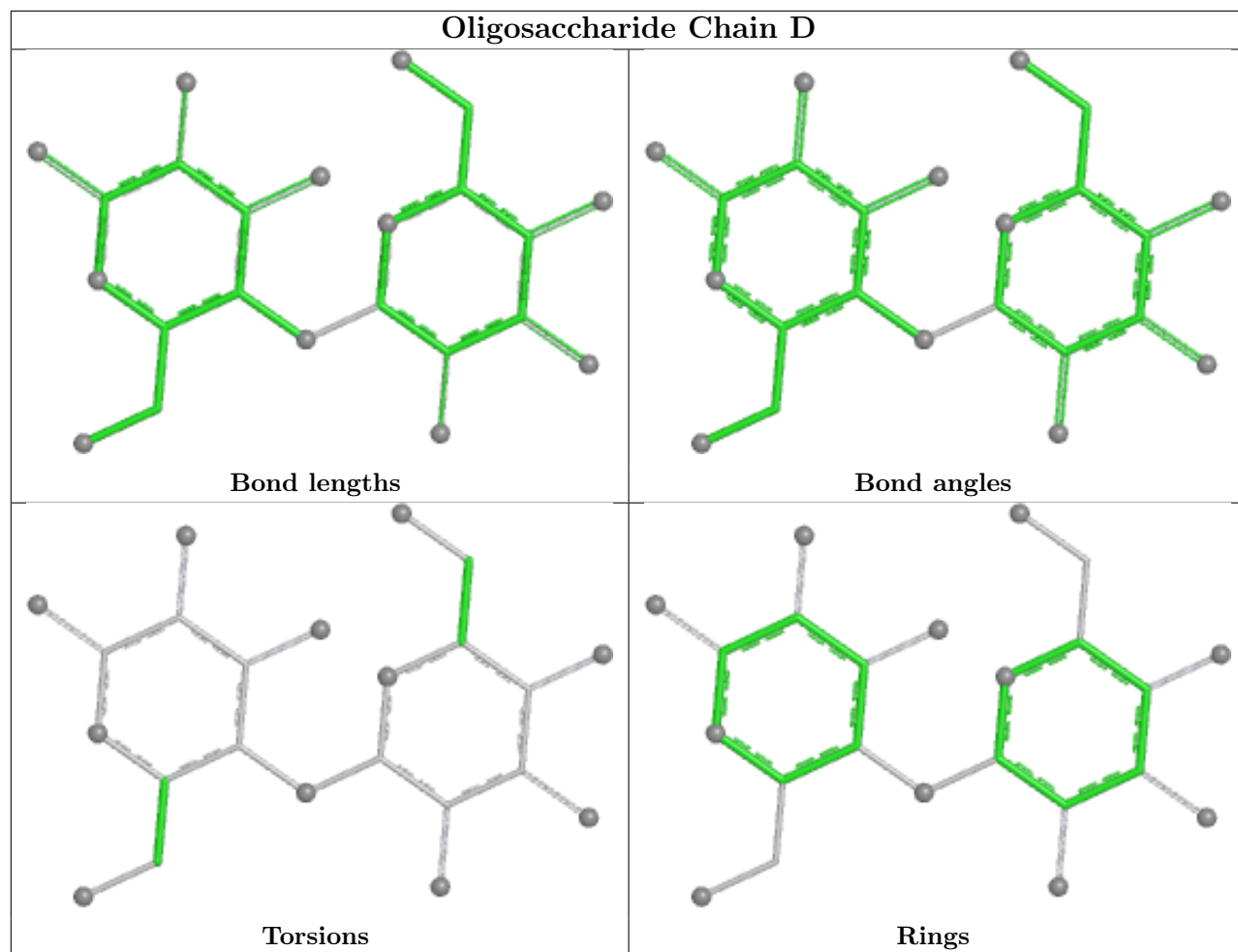
There are no ring outliers.

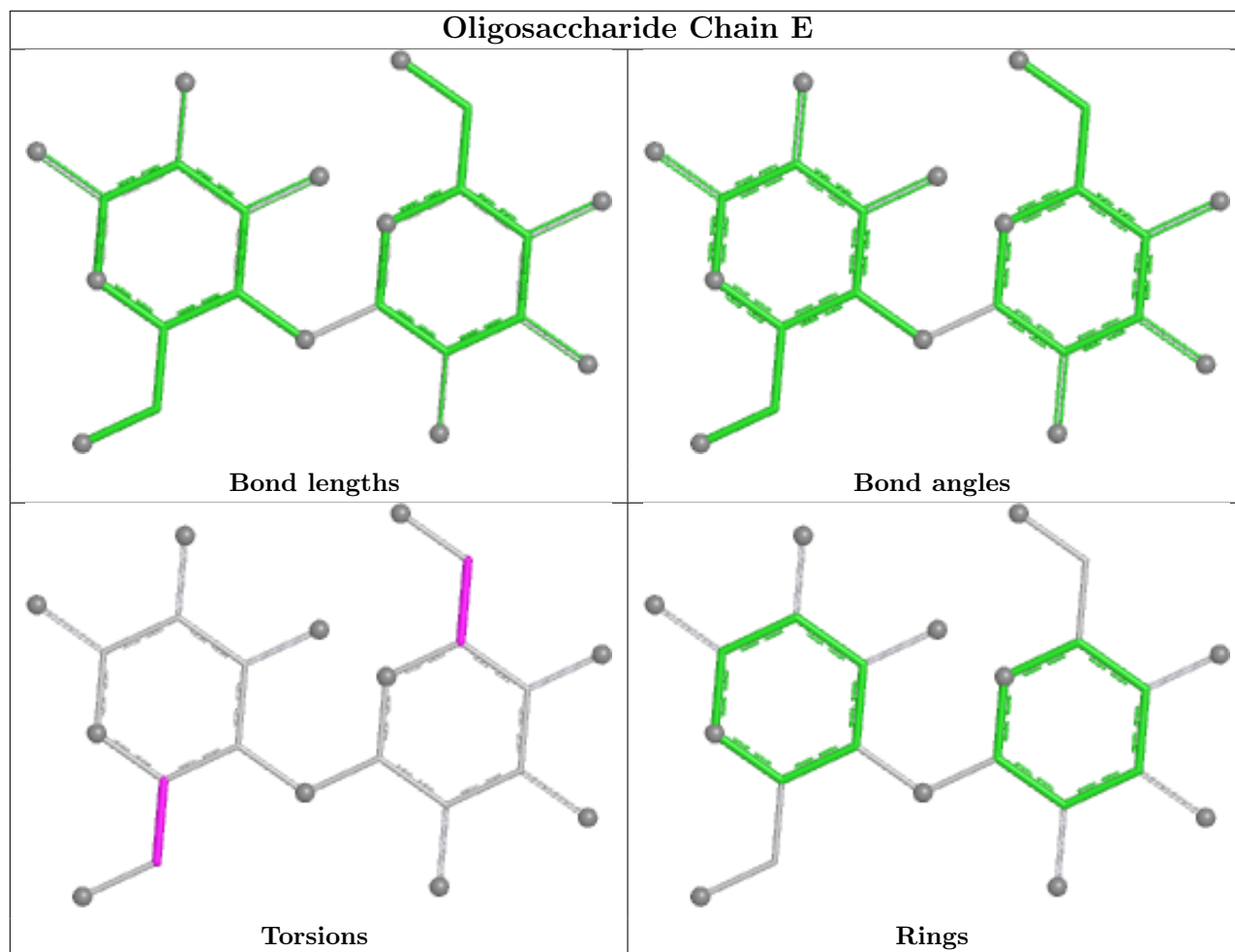
3 monomers are involved in 3 short contacts:

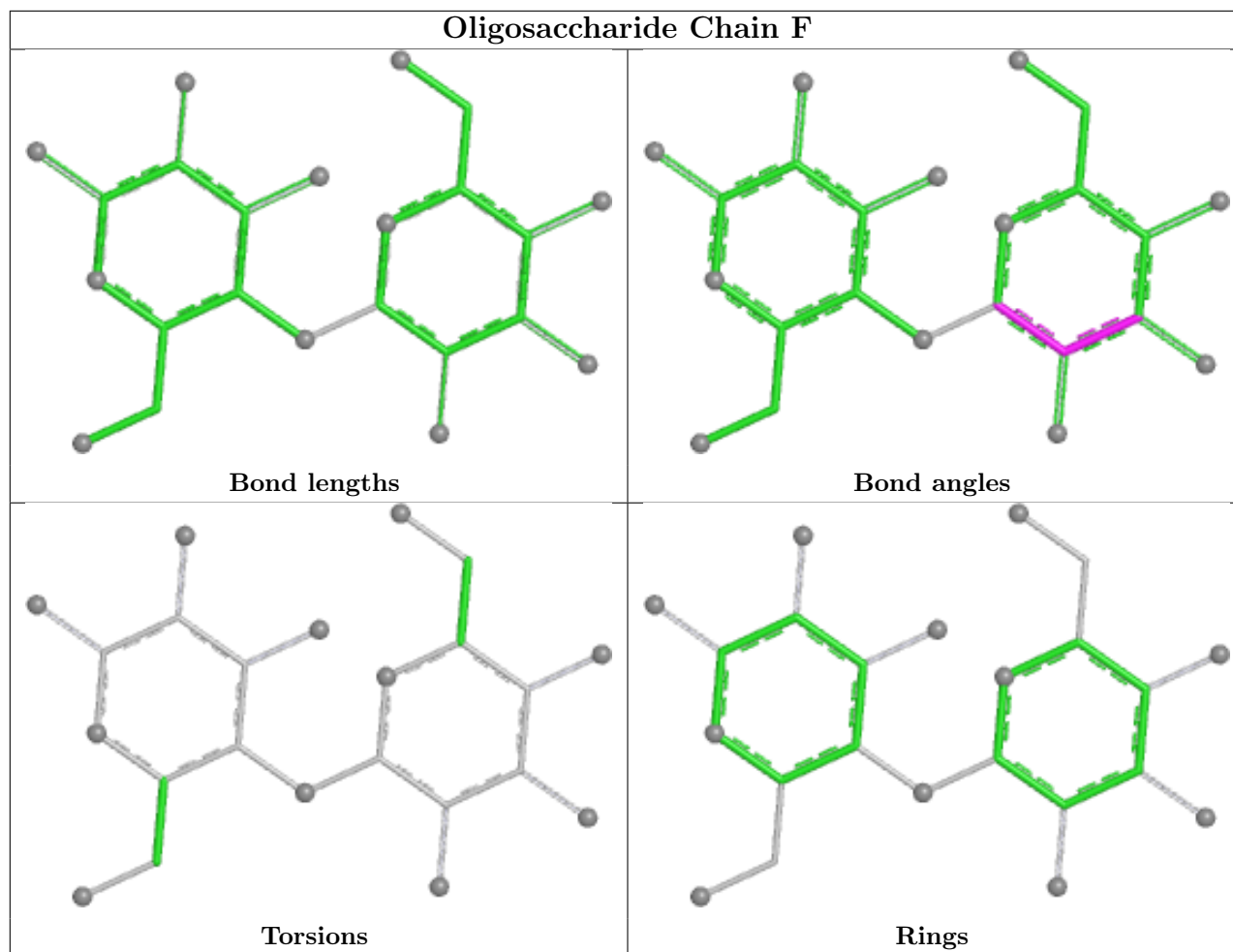
Mol	Chain	Res	Type	Clashes	Symm-Clashes
2	E	1	GLC	1	0
2	E	2	GLC	1	0
2	D	1	GLC	2	0

The following is a two-dimensional graphical depiction of Mogul quality analysis of bond lengths, bond angles, torsion angles, and ring geometry for oligosaccharide.









5.6 Ligand geometry [i](#)

12 ligands are modelled in this entry.

In the following table, the Counts columns list the number of bonds (or angles) for which Mogul statistics could be retrieved, the number of bonds (or angles) that are observed in the model and the number of bonds (or angles) that are defined in the Chemical Component Dictionary. The Link column lists molecule types, if any, to which the group is linked. The Z score for a bond length (or angle) is the number of standard deviations the observed value is removed from the expected value. A bond length (or angle) with $|Z| > 2$ is considered an outlier worth inspection. RMSZ is the root-mean-square of all Z scores of the bond lengths (or angles).

Mol	Type	Chain	Res	Link	Bond lengths			Bond angles		
					Counts	RMSZ	$\# Z > 2$	Counts	RMSZ	$\# Z > 2$
4	NAG	A	403	1	14,14,15	0.24	0	17,19,21	0.44	0
4	NAG	A	404	1	14,14,15	0.17	0	17,19,21	0.55	0
4	NAG	A	402	1	14,14,15	0.15	0	17,19,21	0.72	1 (5%)
5	EDO	B	407	-	3,3,3	0.44	0	2,2,2	0.35	0
6	MHA	A	409	-	12,12,12	1.59	1 (8%)	15,15,15	1.28	2 (13%)

Mol	Type	Chain	Res	Link	Bond lengths			Bond angles		
					Counts	RMSZ	# Z > 2	Counts	RMSZ	# Z > 2
4	NAG	B	404	1	14,14,15	0.58	0	17,19,21	1.26	1 (5%)
4	NAG	A	405	1	14,14,15	1.15	1 (7%)	17,19,21	0.98	2 (11%)
3	ATP	A	401	-	28,33,33	1.12	3 (10%)	34,52,52	1.12	2 (5%)
4	NAG	B	402	1	14,14,15	0.27	0	17,19,21	0.52	0
4	NAG	B	403	1	14,14,15	0.35	0	17,19,21	0.50	0
5	EDO	A	408	-	3,3,3	0.44	0	2,2,2	0.39	0
3	ATP	B	401	-	28,33,33	1.13	3 (10%)	34,52,52	1.19	3 (8%)

In the following table, the Chirals column lists the number of chiral outliers, the number of chiral centers analysed, the number of these observed in the model and the number defined in the Chemical Component Dictionary. Similar counts are reported in the Torsion and Rings columns. '-' means no outliers of that kind were identified.

Mol	Type	Chain	Res	Link	Chirals	Torsions	Rings
4	NAG	A	403	1	-	2/6/23/26	0/1/1/1
4	NAG	A	404	1	-	0/6/23/26	0/1/1/1
4	NAG	A	402	1	-	1/6/23/26	0/1/1/1
5	EDO	B	407	-	-	0/1/1/1	-
6	MHA	A	409	-	-	6/12/12/12	-
4	NAG	B	404	1	-	2/6/23/26	0/1/1/1
4	NAG	A	405	1	-	2/6/23/26	0/1/1/1
3	ATP	A	401	-	-	2/18/38/38	0/3/3/3
4	NAG	B	402	1	-	3/6/23/26	0/1/1/1
4	NAG	B	403	1	-	2/6/23/26	0/1/1/1
5	EDO	A	408	-	-	0/1/1/1	-
3	ATP	B	401	-	-	1/18/38/38	0/3/3/3

All (8) bond length outliers are listed below:

Mol	Chain	Res	Type	Atoms	Z	Observed(Å)	Ideal(Å)
6	A	409	MHA	C6-N2	4.09	1.46	1.32
4	A	405	NAG	O5-C1	-3.97	1.37	1.43
3	B	401	ATP	PA-O3A	2.81	1.62	1.59
3	A	401	ATP	PB-O3A	2.64	1.62	1.59
3	A	401	ATP	PA-O3A	2.64	1.62	1.59
3	B	401	ATP	PB-O3A	2.51	1.62	1.59
3	B	401	ATP	PB-O3B	2.26	1.61	1.59
3	A	401	ATP	PB-O3B	2.26	1.61	1.59

All (11) bond angle outliers are listed below:

Mol	Chain	Res	Type	Atoms	Z	Observed(°)	Ideal(°)
3	A	401	ATP	N3-C2-N1	-4.12	123.08	128.67
3	B	401	ATP	N3-C2-N1	-4.04	123.18	128.67
4	B	404	NAG	C8-C7-N2	3.30	121.59	116.12
3	B	401	ATP	O4'-C1'-N9	2.64	112.25	108.75
6	A	409	MHA	C6-C5-N1	-2.58	109.69	114.42
4	A	402	NAG	C1-O5-C5	2.56	115.61	112.19
4	A	405	NAG	C4-C3-C2	2.49	114.66	111.02
3	B	401	ATP	C4-C5-N7	-2.31	106.90	109.34
4	A	405	NAG	C3-C4-C5	2.30	114.41	110.23
6	A	409	MHA	C5-C6-N2	2.24	120.13	115.61
3	A	401	ATP	C4-C5-N7	-2.10	107.12	109.34

There are no chirality outliers.

All (21) torsion outliers are listed below:

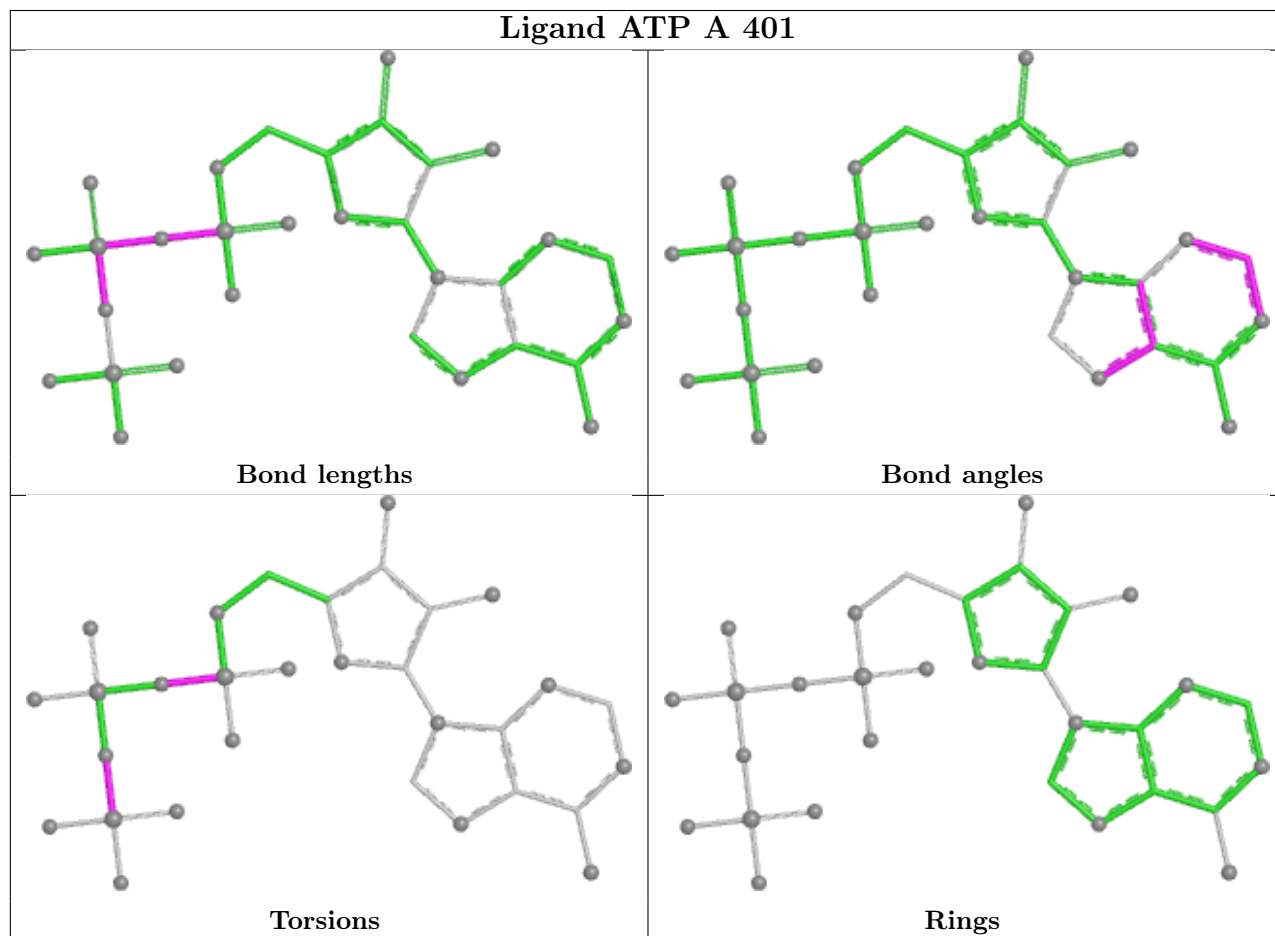
Mol	Chain	Res	Type	Atoms
6	A	409	MHA	N1-C1-C2-O1
6	A	409	MHA	N1-C3-C4-O3
6	A	409	MHA	N1-C3-C4-O4
4	A	403	NAG	C4-C5-C6-O6
4	A	405	NAG	O5-C5-C6-O6
4	B	403	NAG	C4-C5-C6-O6
6	A	409	MHA	N1-C1-C2-O2
4	A	403	NAG	O5-C5-C6-O6
4	B	403	NAG	O5-C5-C6-O6
4	A	405	NAG	C4-C5-C6-O6
4	B	402	NAG	O5-C5-C6-O6
4	B	404	NAG	C3-C2-N2-C7
4	B	402	NAG	C4-C5-C6-O6
4	A	402	NAG	O5-C5-C6-O6
4	B	404	NAG	C1-C2-N2-C7
6	A	409	MHA	N1-C5-C6-N2
4	B	402	NAG	C1-C2-N2-C7
6	A	409	MHA	N1-C5-C6-O5
3	A	401	ATP	PB-O3B-PG-O2G
3	B	401	ATP	PB-O3B-PG-O2G
3	A	401	ATP	PB-O3A-PA-O2A

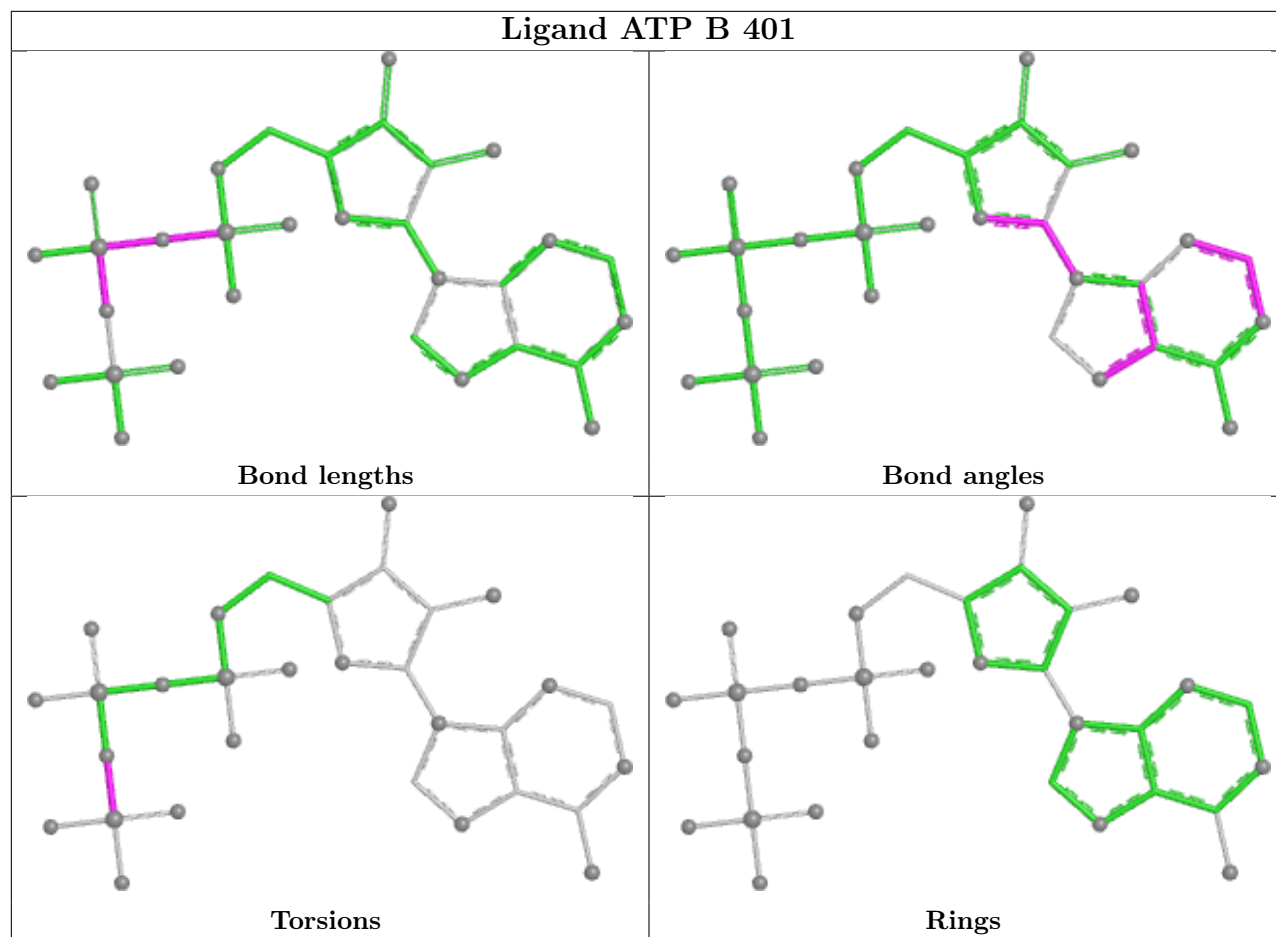
There are no ring outliers.

5 monomers are involved in 6 short contacts:

Mol	Chain	Res	Type	Clashes	Symm-Clashes
4	A	403	NAG	1	0
4	A	402	NAG	1	0
5	B	407	EDO	2	0
4	B	404	NAG	1	0
3	A	401	ATP	1	0

The following is a two-dimensional graphical depiction of Mogul quality analysis of bond lengths, bond angles, torsion angles, and ring geometry for all instances of the Ligand of Interest. In addition, ligands with molecular weight > 250 and outliers as shown on the validation Tables will also be included. For torsion angles, if less than 5% of the Mogul distribution of torsion angles is within 10 degrees of the torsion angle in question, then that torsion angle is considered an outlier. Any bond that is central to one or more torsion angles identified as an outlier by Mogul will be highlighted in the graph. For rings, the root-mean-square deviation (RMSD) between the ring in question and similar rings identified by Mogul is calculated over all ring torsion angles. If the average RMSD is greater than 60 degrees and the minimal RMSD between the ring in question and any Mogul-identified rings is also greater than 60 degrees, then that ring is considered an outlier. The outliers are highlighted in purple. The color gray indicates Mogul did not find sufficient equivalents in the CSD to analyse the geometry.





5.7 Other polymers [i](#)

There are no such residues in this entry.

5.8 Polymer linkage issues [i](#)

There are no chain breaks in this entry.

6 Fit of model and data

6.1 Protein, DNA and RNA chains

In the following table, the column labelled ‘#RSRZ > 2’ contains the number (and percentage) of RSRZ outliers, followed by percent RSRZ outliers for the chain as percentile scores relative to all X-ray entries and entries of similar resolution. The OWAB column contains the minimum, median, 95th percentile and maximum values of the occupancy-weighted average B-factor per residue. The column labelled ‘Q < 0.9’ lists the number of (and percentage) of residues with an average occupancy less than 0.9.

Mol	Chain	Analysed	<RSRZ>	#RSRZ>2	OWAB(Å ²)	Q<0.9
1	A	357/363 (98%)	0.47	40 (11%) 11 10	46, 82, 134, 168	0
1	B	357/363 (98%)	0.68	48 (13%) 8 8	48, 88, 153, 181	0
All	All	714/726 (98%)	0.58	88 (12%) 9 9	46, 86, 141, 181	0

All (88) RSRZ outliers are listed below:

Mol	Chain	Res	Type	RSRZ
1	B	130	GLY	11.1
1	A	7	PHE	6.5
1	B	128	PRO	6.2
1	A	362	ASN	5.9
1	A	19	LYS	5.5
1	B	114	TYR	4.7
1	B	118	SER	4.7
1	B	131	GLY	4.7
1	A	361	VAL	4.7
1	B	126	ARG	4.6
1	A	128	PRO	4.4
1	B	127	LEU	4.2
1	A	21	TRP	4.2
1	B	145	ARG	4.1
1	A	8	PHE	4.0
1	B	129	GLY	3.9
1	B	121	GLN	3.9
1	B	291	GLY	3.8
1	B	336	THR	3.7
1	B	124	PRO	3.6
1	A	143	VAL	3.6
1	B	306	ASP	3.6
1	A	20	SER	3.5
1	A	9	THR	3.5

Continued on next page...

Continued from previous page...

Mol	Chain	Res	Type	RSRZ
1	B	109	GLU	3.5
1	A	184	PHE	3.4
1	B	351	ASP	3.3
1	A	17	VAL	3.3
1	B	125	GLU	3.3
1	B	158	ASP	3.3
1	B	17	VAL	3.3
1	B	144	LEU	3.2
1	A	125	GLU	3.1
1	B	363	GLU	3.1
1	B	143	VAL	3.1
1	B	139	ASN	3.1
1	A	306	ASP	3.0
1	A	127	LEU	2.9
1	B	123	GLY	2.9
1	A	183	LEU	2.9
1	A	288	MET	2.8
1	A	10	TYR	2.8
1	B	292	SER	2.8
1	A	318	ILE	2.7
1	A	289	GLU	2.7
1	A	18	VAL	2.7
1	B	117	VAL	2.7
1	B	160	VAL	2.7
1	B	8	PHE	2.7
1	A	290	ASN	2.6
1	B	146	THR	2.6
1	A	130	GLY	2.6
1	B	32	LEU	2.6
1	A	202	THR	2.6
1	B	52	ARG	2.6
1	A	124	PRO	2.5
1	A	360	GLU	2.5
1	A	16	ILE	2.5
1	A	204	ARG	2.5
1	B	136	ARG	2.5
1	A	25	ILE	2.4
1	B	288	MET	2.4
1	A	311	GLY	2.3
1	A	351	ASP	2.3
1	A	343	LEU	2.3
1	A	112	GLU	2.3

Continued on next page...

Continued from previous page...

Mol	Chain	Res	Type	RSRZ
1	A	23	ILE	2.3
1	B	11	GLU	2.3
1	B	21	TRP	2.3
1	B	45	HIS	2.2
1	A	319	ILE	2.2
1	B	7	PHE	2.2
1	B	156	GLU	2.2
1	B	51	VAL	2.2
1	B	159	THR	2.2
1	B	166	MET	2.2
1	B	16	ILE	2.2
1	B	316	PHE	2.1
1	B	330	THR	2.1
1	A	353	TYR	2.1
1	B	10	TYR	2.1
1	A	338	LEU	2.1
1	B	120	SER	2.1
1	A	138	VAL	2.1
1	A	270	GLU	2.0
1	B	253	TRP	2.0
1	A	161	GLU	2.0
1	B	73	ARG	2.0

6.2 Non-standard residues in protein, DNA, RNA chains [\(i\)](#)

There are no non-standard protein/DNA/RNA residues in this entry.

6.3 Carbohydrates [\(i\)](#)

In the following table, the Atoms column lists the number of modelled atoms in the group and the number defined in the chemical component dictionary. The B-factors column lists the minimum, median, 95th percentile and maximum values of B factors of atoms in the group. The column labelled 'Q< 0.9' lists the number of atoms with occupancy less than 0.9.

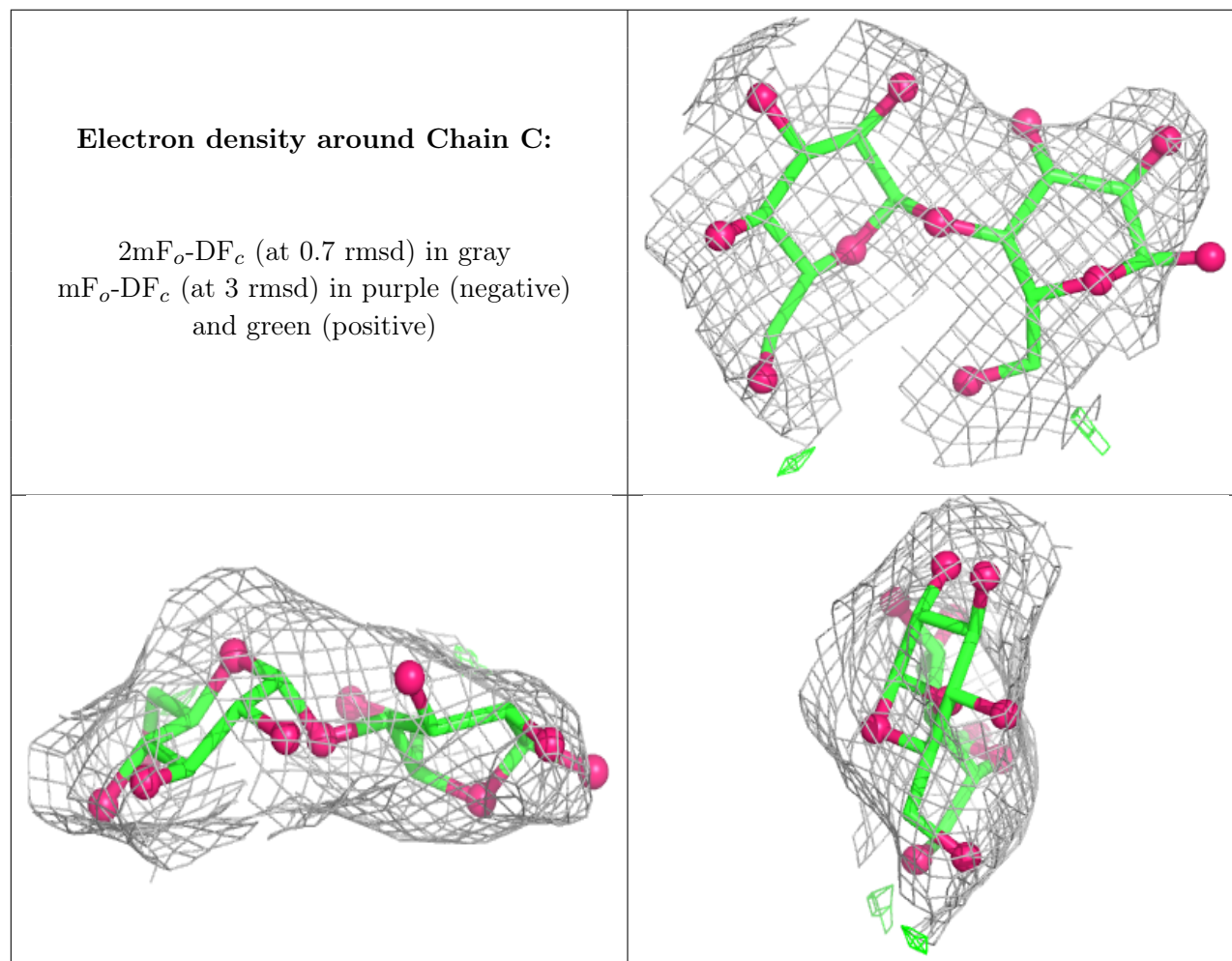
Mol	Type	Chain	Res	Atoms	RSCC	RSR	B-factors(Å ²)	Q<0.9
2	GLC	F	2	11/12	0.29	0.20	120,144,152,154	0
2	GLC	C	1	12/12	0.47	0.17	130,155,167,168	0
2	GLC	D	1	12/12	0.48	0.17	104,145,150,152	0
2	GLC	D	2	11/12	0.49	0.15	123,150,156,157	0
2	GLC	E	1	12/12	0.68	0.13	123,138,151,151	0
2	GLC	F	1	12/12	0.70	0.20	125,132,152,157	0

Continued on next page...

Continued from previous page...

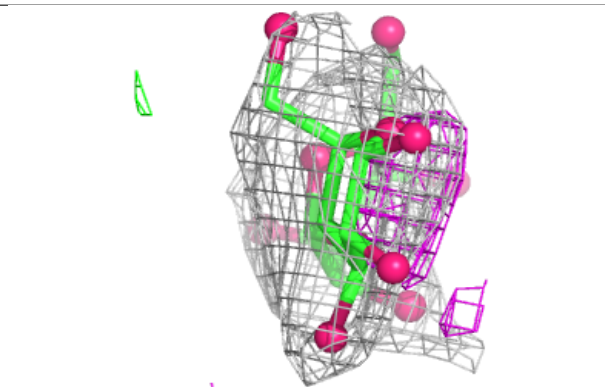
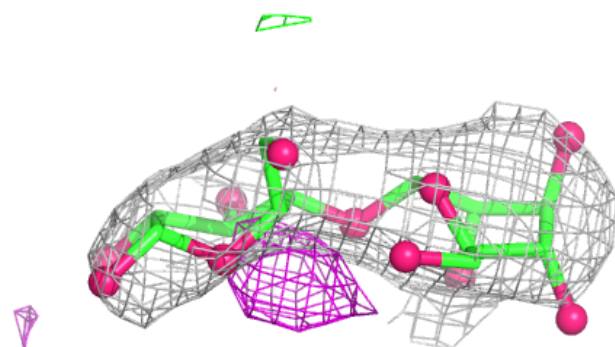
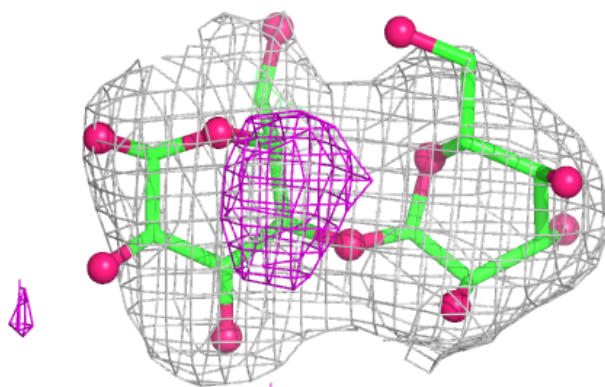
Mol	Type	Chain	Res	Atoms	RSCC	RSR	B-factors(\AA^2)	Q<0.9
2	GLC	C	2	11/12	0.79	0.11	121,149,159,166	0
2	GLC	E	2	11/12	0.89	0.12	120,130,135,139	0

The following is a graphical depiction of the model fit to experimental electron density for oligosaccharide. Each fit is shown from different orientation to approximate a three-dimensional view.

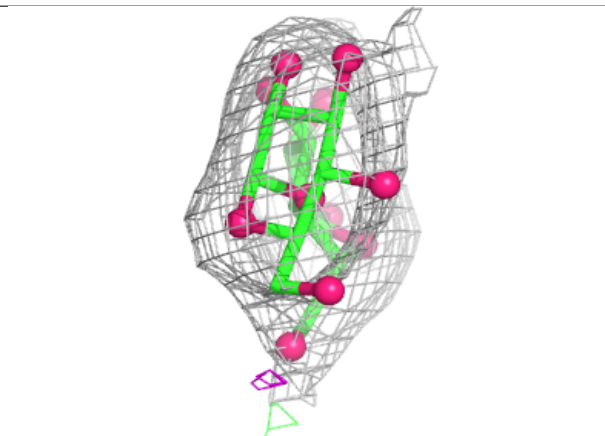
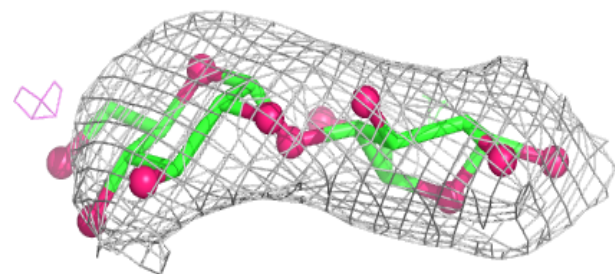
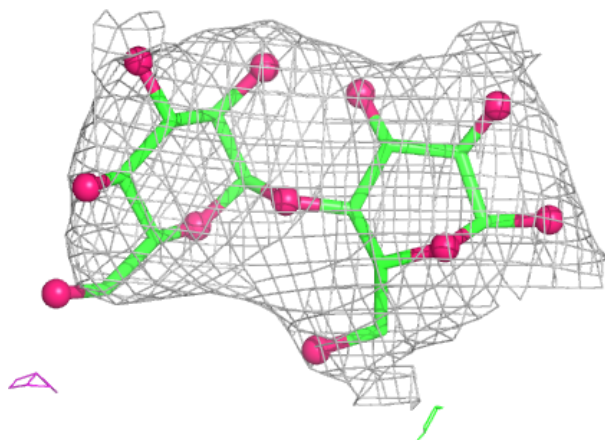


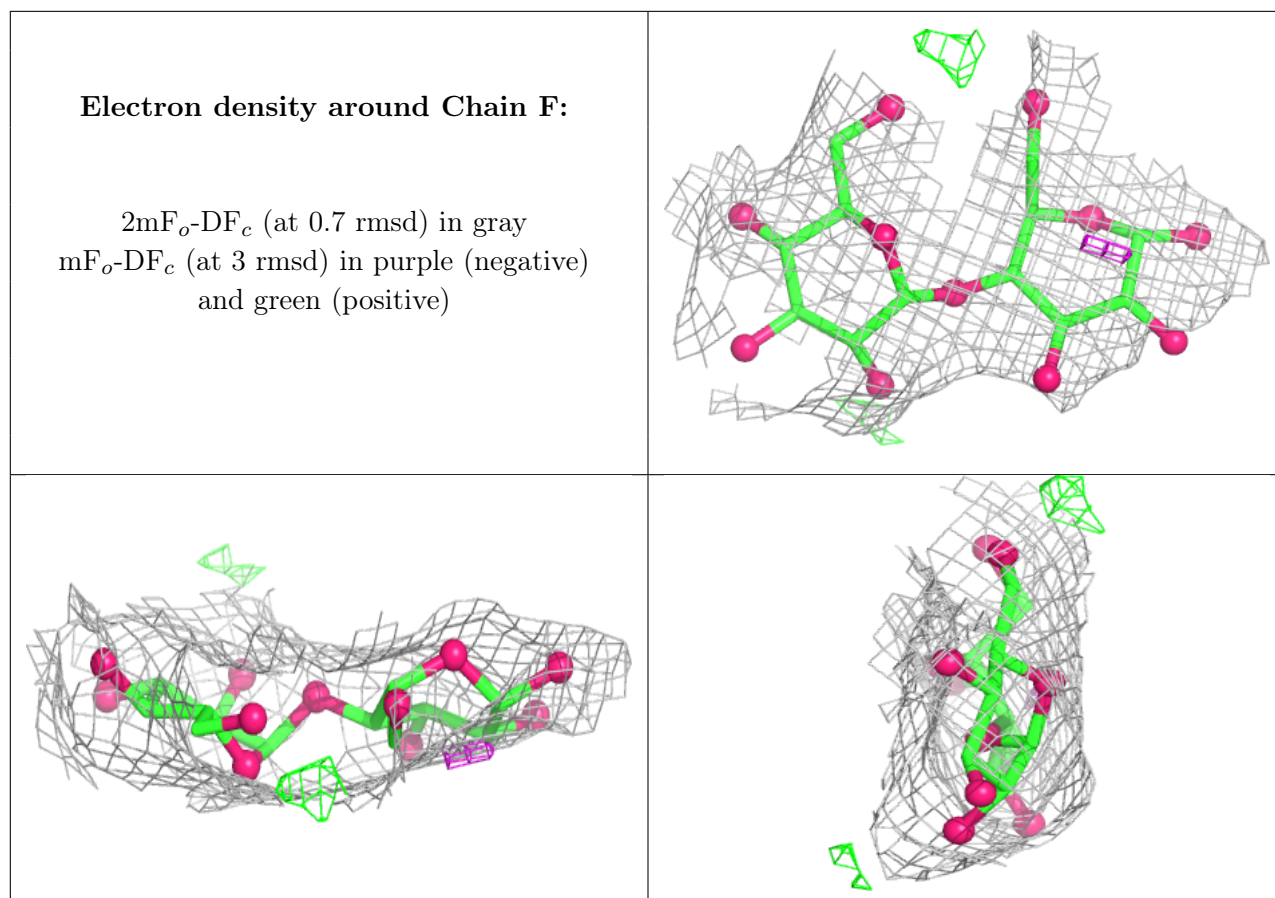
Electron density around Chain D:

$2mF_o-DF_c$ (at 0.7 rmsd) in gray
 mF_o-DF_c (at 3 rmsd) in purple (negative)
and green (positive)

**Electron density around Chain E:**

$2mF_o-DF_c$ (at 0.7 rmsd) in gray
 mF_o-DF_c (at 3 rmsd) in purple (negative)
and green (positive)



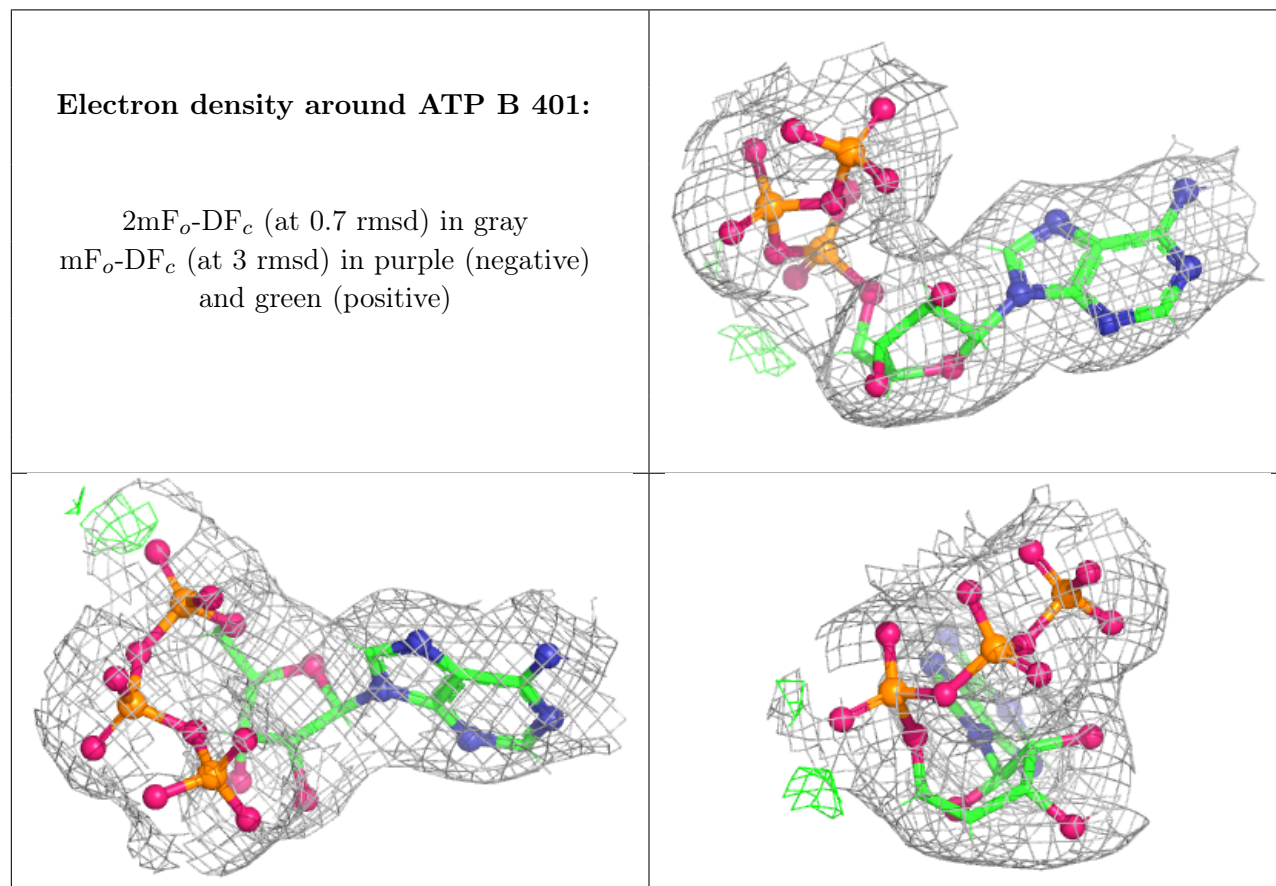


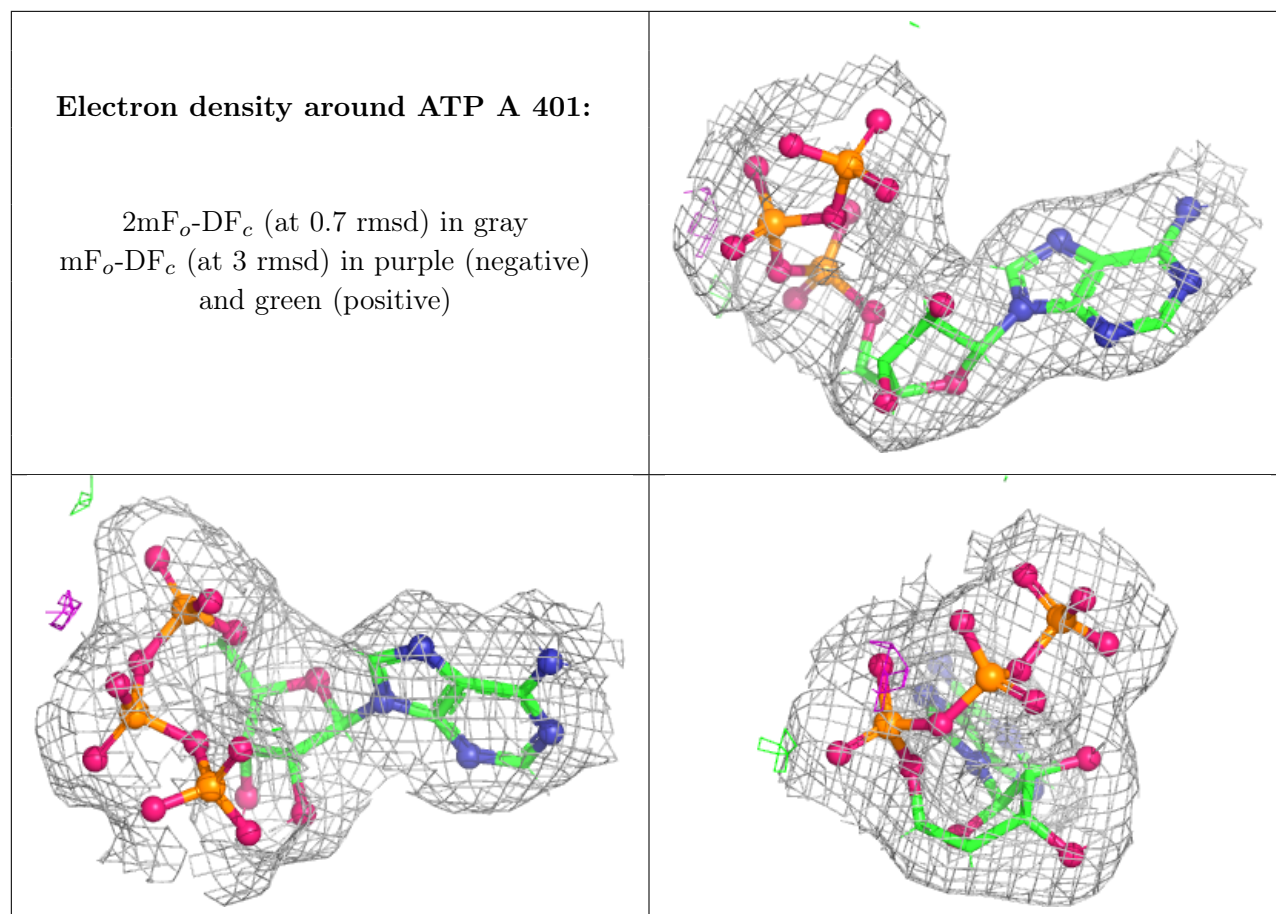
6.4 Ligands [i](#)

In the following table, the Atoms column lists the number of modelled atoms in the group and the number defined in the chemical component dictionary. The B-factors column lists the minimum, median, 95th percentile and maximum values of B factors of atoms in the group. The column labelled 'Q< 0.9' lists the number of atoms with occupancy less than 0.9.

Mol	Type	Chain	Res	Atoms	RSCC	RSR	B-factors(Å ²)	Q<0.9
4	NAG	B	404	14/15	0.29	0.20	117,147,171,174	0
4	NAG	A	405	14/15	0.50	0.14	123,172,212,213	0
6	MHA	A	409	13/13	0.66	0.20	104,110,129,129	21
5	EDO	B	407	4/4	0.74	0.25	95,97,100,100	0
4	NAG	B	402	14/15	0.82	0.11	88,132,167,179	0
4	NAG	A	404	14/15	0.82	0.10	117,147,171,174	0
5	EDO	A	408	4/4	0.83	0.30	95,99,110,112	0
4	NAG	A	403	14/15	0.88	0.10	99,123,156,166	0
4	NAG	B	403	14/15	0.91	0.13	68,92,156,156	0
4	NAG	A	402	14/15	0.93	0.08	53,75,105,109	0
3	ATP	B	401	31/31	0.97	0.06	53,64,80,86	0
3	ATP	A	401	31/31	0.98	0.05	52,63,79,84	0

The following is a graphical depiction of the model fit to experimental electron density of all instances of the Ligand of Interest. In addition, ligands with molecular weight > 250 and outliers as shown on the geometry validation Tables will also be included. Each fit is shown from different orientation to approximate a three-dimensional view.





6.5 Other polymers [i](#)

There are no such residues in this entry.