



Full wwPDB X-ray Structure Validation Report ⓘ

Jun 18, 2024 – 01:36 AM EDT

PDB ID : 5R5A
Title : PanDDA analysis group deposition – Crystal Structure of human NUDT22 in complex with N13663a
Authors : Diaz-Saez, L.; Talon, R.; Krojer, T.; Burgess-Brown, N.A.; Arrowsmith, C.H.; Edwards, A.M.; Bountra, C.; von Delft, F.; Huber, K.V.M.
Deposited on : 2020-02-28
Resolution : 1.44 Å(reported)

This is a Full wwPDB X-ray Structure Validation Report for a publicly released PDB entry.

We welcome your comments at validation@mail.wwpdb.org

A user guide is available at

<https://www.wwpdb.org/validation/2017/XrayValidationReportHelp>

with specific help available everywhere you see the ⓘ symbol.

The types of validation reports are described at

<http://www.wwpdb.org/validation/2017/FAQs#types>.

The following versions of software and data (see [references ⓘ](#)) were used in the production of this report:

MolProbity : 4.02b-467
Mogul : 1.8.5 (274361), CSD as541be (2020)
Xtriage (Phenix) : 1.13
EDS : 2.37.1
Percentile statistics : 20191225.v01 (using entries in the PDB archive December 25th 2019)
Refmac : 5.8.0158
CCP4 : 7.0.044 (Gargrove)
Ideal geometry (proteins) : Engh & Huber (2001)
Ideal geometry (DNA, RNA) : Parkinson et al. (1996)
Validation Pipeline (wwPDB-VP) : 2.37.1

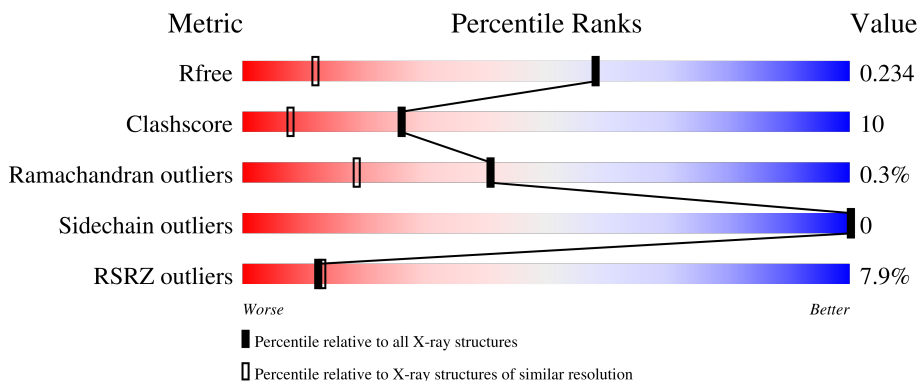
1 Overall quality at a glance

The following experimental techniques were used to determine the structure:

X-RAY DIFFRACTION

The reported resolution of this entry is 1.44 Å.

Percentile scores (ranging between 0-100) for global validation metrics of the entry are shown in the following graphic. The table shows the number of entries on which the scores are based.



Metric	Whole archive (#Entries)	Similar resolution (#Entries, resolution range(Å))
R_{free}	130704	2021 (1.46-1.42)
Clashscore	141614	2086 (1.46-1.42)
Ramachandran outliers	138981	2047 (1.46-1.42)
Sidechain outliers	138945	2047 (1.46-1.42)
RSRZ outliers	127900	1993 (1.46-1.42)

The table below summarises the geometric issues observed across the polymeric chains and their fit to the electron density. The red, orange, yellow and green segments of the lower bar indicate the fraction of residues that contain outliers for ≥ 3 , 2, 1 and 0 types of geometric quality criteria respectively. A grey segment represents the fraction of residues that are not modelled. The numeric value for each fraction is indicated below the corresponding segment, with a dot representing fractions $\leq 5\%$. The upper red bar (where present) indicates the fraction of residues that have poor fit to the electron density. The numeric value is given above the bar.

Mol	Chain	Length	Quality of chain
1	A	304	

The following table lists non-polymeric compounds, carbohydrate monomers and non-standard residues in protein, DNA, RNA chains that are outliers for geometric or electron-density-fit criteria:

Mol	Type	Chain	Res	Chirality	Geometry	Clashes	Electron density
3	DMS	A	402	-	-	X	-

Continued on next page...

Continued from previous page...

Mol	Type	Chain	Res	Chirality	Geometry	Clashes	Electron density
3	DMS	A	403	-	-	X	-

2 Entry composition [i](#)

There are 4 unique types of molecules in this entry. The entry contains 2443 atoms, of which 0 are hydrogens and 0 are deuteriums.

In the tables below, the ZeroOcc column contains the number of atoms modelled with zero occupancy, the AltConf column contains the number of residues with at least one atom in alternate conformation and the Trace column contains the number of residues modelled with at most 2 atoms.

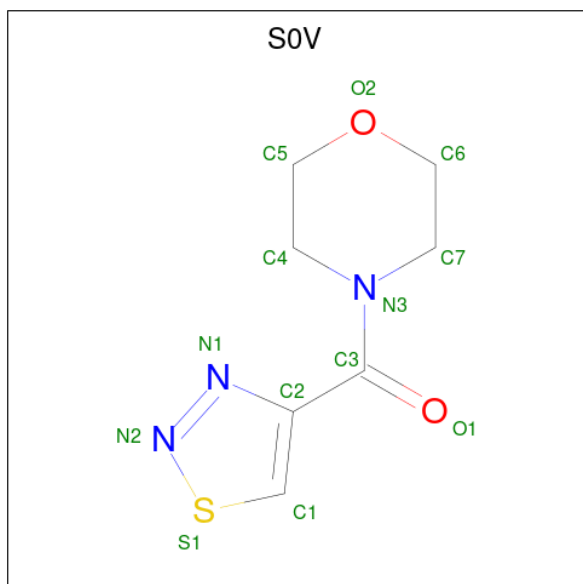
- Molecule 1 is a protein called Uridine diphosphate glucose pyrophosphatase NUdT22.

Mol	Chain	Residues	Atoms					ZeroOcc	AltConf	Trace
			Total	C	N	O	S			
1	A	291	2253	1425	391	432	5	0	7	0

There are 3 discrepancies between the modelled and reference sequences:

Chain	Residue	Modelled	Actual	Comment	Reference
A	0	SER	-	expression tag	UNP Q9BRQ3
A	260	ARG	GLN	conflict	UNP Q9BRQ3
A	263	PRO	LEU	conflict	UNP Q9BRQ3

- Molecule 2 is morpholin-4-yl(1,2,3-thiadiazol-4-yl)methanone (three-letter code: S0V) (formula: C₇H₉N₃O₂S).



Mol	Chain	Residues	Atoms					ZeroOcc	AltConf
			Total	C	N	O	S		
2	A	1	13	7	3	2	1	0	0

- Molecule 3 is DIMETHYL SULFOXIDE (three-letter code: DMS) (formula: C₂H₆OS).



Mol	Chain	Residues	Atoms			ZeroOcc	AltConf	
3	A	1	Total	C	O	S	0	0
			4	2	1	1		
3	A	1	Total	C	O	S	0	0
			4	2	1	1		
3	A	1	Total	C	O	S	0	0
			4	2	1	1		
3	A	1	Total	C	O	S	0	0
			4	2	1	1		

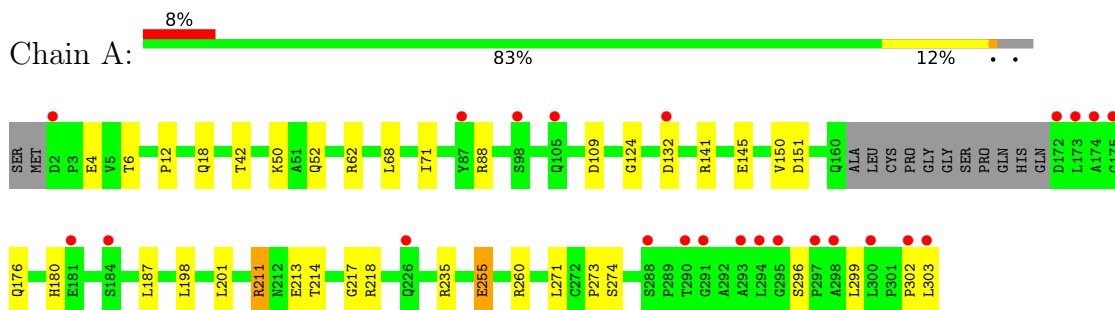
- Molecule 4 is water.

Mol	Chain	Residues	Atoms		ZeroOcc	AltConf
4	A	161	Total	O	0	0
			161	161		

3 Residue-property plots [i](#)

These plots are drawn for all protein, RNA, DNA and oligosaccharide chains in the entry. The first graphic for a chain summarises the proportions of the various outlier classes displayed in the second graphic. The second graphic shows the sequence view annotated by issues in geometry and electron density. Residues are color-coded according to the number of geometric quality criteria for which they contain at least one outlier: green = 0, yellow = 1, orange = 2 and red = 3 or more. A red dot above a residue indicates a poor fit to the electron density ($RSRZ > 2$). Stretches of 2 or more consecutive residues without any outlier are shown as a green connector. Residues present in the sample, but not in the model, are shown in grey.

- Molecule 1: Uridine diphosphate glucose pyrophosphatase NUDT22



4 Data and refinement statistics

Property	Value	Source
Space group	P 21 21 21	Depositor
Cell constants a, b, c, α , β , γ	49.60Å 52.30Å 101.70Å 90.00° 90.00° 90.00°	Depositor
Resolution (Å)	50.85 – 1.44 50.85 – 1.44	Depositor EDS
% Data completeness (in resolution range)	99.9 (50.85-1.44) 99.9 (50.85-1.44)	Depositor EDS
R_{merge}	0.06	Depositor
R_{sym}	(Not available)	Depositor
$\langle I/\sigma(I) \rangle$ ¹	1.43 (at 1.44Å)	Xtrriage
Refinement program	REFMAC 5.8.0238	Depositor
R, R_{free}	0.189 , 0.221 0.201 , 0.234	Depositor DCC
R_{free} test set	2613 reflections (5.37%)	wwPDB-VP
Wilson B-factor (Å ²)	19.7	Xtrriage
Anisotropy	0.138	Xtrriage
Bulk solvent k_{sol} (e/Å ³), B_{sol} (Å ²)	0.35 , 43.2	EDS
L-test for twinning ²	$\langle L \rangle = 0.48$, $\langle L^2 \rangle = 0.32$	Xtrriage
Estimated twinning fraction	No twinning to report.	Xtrriage
F_o, F_c correlation	0.96	EDS
Total number of atoms	2443	wwPDB-VP
Average B, all atoms (Å ²)	24.0	wwPDB-VP

Xtrriage's analysis on translational NCS is as follows: *The largest off-origin peak in the Patterson function is 6.42% of the height of the origin peak. No significant pseudotranslation is detected.*

¹Intensities estimated from amplitudes.

²Theoretical values of $\langle |L| \rangle$, $\langle L^2 \rangle$ for acentric reflections are 0.5, 0.333 respectively for untwinned datasets, and 0.375, 0.2 for perfectly twinned datasets.

5 Model quality [i](#)

5.1 Standard geometry [i](#)

Bond lengths and bond angles in the following residue types are not validated in this section: S0V, DMS

The Z score for a bond length (or angle) is the number of standard deviations the observed value is removed from the expected value. A bond length (or angle) with $|Z| > 5$ is considered an outlier worth inspection. RMSZ is the root-mean-square of all Z scores of the bond lengths (or angles).

Mol	Chain	Bond lengths		Bond angles	
		RMSZ	# $ Z > 5$	RMSZ	# $ Z > 5$
1	A	0.88	1/2307 (0.0%)	0.88	3/3152 (0.1%)

All (1) bond length outliers are listed below:

Mol	Chain	Res	Type	Atoms	Z	Observed(Å)	Ideal(Å)
1	A	255	GLU	CD-OE1	7.36	1.33	1.25

All (3) bond angle outliers are listed below:

Mol	Chain	Res	Type	Atoms	Z	Observed(°)	Ideal(°)
1	A	235	ARG	NE-CZ-NH2	-5.87	117.36	120.30
1	A	62	ARG	NE-CZ-NH1	5.46	123.03	120.30
1	A	211	ARG	NE-CZ-NH1	-5.43	117.58	120.30

There are no chirality outliers.

There are no planarity outliers.

5.2 Too-close contacts [i](#)

In the following table, the Non-H and H(model) columns list the number of non-hydrogen atoms and hydrogen atoms in the chain respectively. The H(added) column lists the number of hydrogen atoms added and optimized by MolProbity. The Clashes column lists the number of clashes within the asymmetric unit, whereas Symm-Clashes lists symmetry-related clashes.

Mol	Chain	Non-H	H(model)	H(added)	Clashes	Symm-Clashes
1	A	2253	0	2193	44	0
2	A	13	0	0	0	0
3	A	16	0	24	19	0
4	A	161	0	0	16	3

Continued on next page...

Continued from previous page...

Mol	Chain	Non-H	H(model)	H(added)	Clashes	Symm-Clashes
All	All	2443	0	2217	47	3

The all-atom clashscore is defined as the number of clashes found per 1000 atoms (including hydrogen atoms). The all-atom clashscore for this structure is 10.

All (47) close contacts within the same asymmetric unit are listed below, sorted by their clash magnitude.

Atom-1	Atom-2	Interatomic distance (Å)	Clash overlap (Å)
1:A:88:ARG:CD	4:A:501:HOH:O	1.68	1.07
1:A:88:ARG:HD3	4:A:501:HOH:O	1.42	0.94
1:A:211:ARG:HD3	1:A:213:GLU:OE2	1.74	0.88
1:A:260:ARG:HB2	4:A:520:HOH:O	1.78	0.83
1:A:255:GLU:OE1	4:A:502:HOH:O	1.98	0.80
1:A:211:ARG:CD	1:A:213:GLU:OE2	2.33	0.77
1:A:4:GLU:HB2	1:A:214:THR:HG23	1.72	0.71
1:A:42:THR:OG1	1:A:88:ARG:NH2	2.23	0.71
1:A:145:GLU:OE2	1:A:218:ARG:NH2	2.24	0.70
1:A:274:SER:OG	3:A:405:DMS:O	2.09	0.68
1:A:187:LEU:HD13	3:A:403:DMS:H13	1.78	0.65
1:A:198:LEU:O	3:A:403:DMS:H11	1.96	0.64
1:A:88:ARG:CG	4:A:501:HOH:O	2.20	0.64
1:A:302:PRO:O	1:A:303:LEU:CB	2.46	0.63
3:A:404:DMS:H12	4:A:537:HOH:O	2.00	0.61
1:A:141:ARG:H	3:A:402:DMS:C1	2.13	0.61
1:A:141:ARG:HB2	3:A:402:DMS:H13	1.83	0.59
1:A:71:ILE:HG23	4:A:503:HOH:O	2.02	0.58
1:A:299:LEU:HB2	4:A:511:HOH:O	2.05	0.55
3:A:402:DMS:H12	4:A:526:HOH:O	2.06	0.55
1:A:124:GLY:HA3	3:A:405:DMS:H13	1.86	0.55
1:A:88:ARG:HG2	4:A:501:HOH:O	1.98	0.55
1:A:52:GLN:NE2	4:A:510:HOH:O	2.41	0.54
1:A:211:ARG:HG3	1:A:217:GLY:HA2	1.88	0.53
1:A:141:ARG:HE	3:A:402:DMS:H13	1.74	0.53
1:A:18:GLN:HE22	1:A:180:HIS:HD2	1.57	0.52
1:A:71:ILE:N	4:A:503:HOH:O	2.43	0.50
1:A:141:ARG:HE	3:A:402:DMS:C1	2.25	0.50
1:A:4:GLU:HB2	1:A:214:THR:CG2	2.41	0.48
1:A:198:LEU:CD1	3:A:403:DMS:H13	2.43	0.48
1:A:4:GLU:HG3	1:A:273:PRO:HG3	1.95	0.48
1:A:141:ARG:H	3:A:402:DMS:H12	1.79	0.47
1:A:151:ASP:OD1	3:A:405:DMS:S	2.72	0.47

Continued on next page...

Continued from previous page...

Atom-1	Atom-2	Interatomic distance (Å)	Clash overlap (Å)
1:A:141:ARG:H	3:A:402:DMS:H13	1.81	0.46
3:A:402:DMS:C1	4:A:526:HOH:O	2.60	0.46
1:A:296:SER:HB2	4:A:511:HOH:O	2.15	0.46
1:A:198:LEU:HD11	3:A:403:DMS:H13	1.99	0.45
1:A:201:LEU:HB2	3:A:403:DMS:H12	1.99	0.45
1:A:18:GLN:HE22	1:A:180:HIS:CD2	2.35	0.43
1:A:211:ARG:HD3	1:A:213:GLU:CD	2.37	0.43
1:A:109:ASP:O	3:A:404:DMS:C1	2.67	0.42
1:A:176:GLN:NE2	4:A:514:HOH:O	2.53	0.42
1:A:6:THR:OG1	1:A:211:ARG:HD2	2.19	0.42
1:A:50:LYS:NZ	4:A:516:HOH:O	2.54	0.41
1:A:12:PRO:HD3	1:A:68:LEU:HD21	2.02	0.40
1:A:141:ARG:CB	3:A:402:DMS:H13	2.51	0.40
1:A:150:VAL:HB	1:A:271:LEU:HD23	2.03	0.40

All (3) symmetry-related close contacts are listed below. The label for Atom-2 includes the symmetry operator and encoded unit-cell translations to be applied.

Atom-1	Atom-2	Interatomic distance (Å)	Clash overlap (Å)
4:A:511:HOH:O	4:A:576:HOH:O[3_645]	2.09	0.11
4:A:532:HOH:O	4:A:647:HOH:O[4_565]	2.15	0.05
4:A:510:HOH:O	4:A:604:HOH:O[2_564]	2.17	0.03

5.3 Torsion angles [i](#)

5.3.1 Protein backbone [i](#)

In the following table, the Percentiles column shows the percent Ramachandran outliers of the chain as a percentile score with respect to all X-ray entries followed by that with respect to entries of similar resolution.

The Analysed column shows the number of residues for which the backbone conformation was analysed, and the total number of residues.

Mol	Chain	Analysed	Favoured	Allowed	Outliers	Percentiles
1	A	293/304 (96%)	288 (98%)	3 (1%)	2 (1%)	22 4

All (2) Ramachandran outliers are listed below:

Mol	Chain	Res	Type
1	A	132[A]	ASP
1	A	132[B]	ASP

5.3.2 Protein sidechains [i](#)

In the following table, the Percentiles column shows the percent sidechain outliers of the chain as a percentile score with respect to all X-ray entries followed by that with respect to entries of similar resolution.

The Analysed column shows the number of residues for which the sidechain conformation was analysed, and the total number of residues.

Mol	Chain	Analysed	Rotameric	Outliers	Percentiles
1	A	236/244 (97%)	236 (100%)	0	100 100

There are no protein residues with a non-rotameric sidechain to report.

Sometimes sidechains can be flipped to improve hydrogen bonding and reduce clashes. All (3) such sidechains are listed below:

Mol	Chain	Res	Type
1	A	77	GLN
1	A	176	GLN
1	A	180	HIS

5.3.3 RNA [i](#)

There are no RNA molecules in this entry.

5.4 Non-standard residues in protein, DNA, RNA chains [i](#)

There are no non-standard protein/DNA/RNA residues in this entry.

5.5 Carbohydrates [i](#)

There are no monosaccharides in this entry.

5.6 Ligand geometry [i](#)

5 ligands are modelled in this entry.

In the following table, the Counts columns list the number of bonds (or angles) for which Mogul statistics could be retrieved, the number of bonds (or angles) that are observed in the model and the number of bonds (or angles) that are defined in the Chemical Component Dictionary. The Link column lists molecule types, if any, to which the group is linked. The Z score for a bond length (or angle) is the number of standard deviations the observed value is removed from the expected value. A bond length (or angle) with $|Z| > 2$ is considered an outlier worth inspection. RMSZ is the root-mean-square of all Z scores of the bond lengths (or angles).

Mol	Type	Chain	Res	Link	Bond lengths			Bond angles		
					Counts	RMSZ	# Z > 2	Counts	RMSZ	# Z > 2
2	S0V	A	401	-	9,14,14	1.93	1 (11%)	12,18,18	0.55	0
3	DMS	A	402	-	3,3,3	0.29	0	3,3,3	0.29	0
3	DMS	A	403	-	3,3,3	0.31	0	3,3,3	0.40	0
3	DMS	A	405	-	3,3,3	0.32	0	3,3,3	0.20	0
3	DMS	A	404	-	3,3,3	0.29	0	3,3,3	0.28	0

In the following table, the Chirals column lists the number of chiral outliers, the number of chiral centers analysed, the number of these observed in the model and the number defined in the Chemical Component Dictionary. Similar counts are reported in the Torsion and Rings columns. '-' means no outliers of that kind were identified.

Mol	Type	Chain	Res	Link	Chirals	Torsions	Rings
2	S0V	A	401	-	-	0/4/16/16	0/2/2/2

All (1) bond length outliers are listed below:

Mol	Chain	Res	Type	Atoms	Z	Observed(Å)	Ideal(Å)
2	A	401	S0V	C2-C3	-5.65	1.41	1.50

There are no bond angle outliers.

There are no chirality outliers.

There are no torsion outliers.

There are no ring outliers.

4 monomers are involved in 19 short contacts:

Mol	Chain	Res	Type	Clashes	Symm-Clashes
3	A	402	DMS	9	0
3	A	403	DMS	5	0
3	A	405	DMS	3	0
3	A	404	DMS	2	0

5.7 Other polymers [i](#)

There are no such residues in this entry.

5.8 Polymer linkage issues [i](#)

There are no chain breaks in this entry.

6 Fit of model and data [i](#)

6.1 Protein, DNA and RNA chains [i](#)

In the following table, the column labelled ‘#RSRZ> 2’ contains the number (and percentage) of RSRZ outliers, followed by percent RSRZ outliers for the chain as percentile scores relative to all X-ray entries and entries of similar resolution. The OWAB column contains the minimum, median, 95th percentile and maximum values of the occupancy-weighted average B-factor per residue. The column labelled ‘Q< 0.9’ lists the number of (and percentage) of residues with an average occupancy less than 0.9.

Mol	Chain	Analysed	<RSRZ>	#RSRZ>2	OWAB(Å ²)	Q<0.9
1	A	291/304 (95%)	0.08	23 (7%) 12 13	15, 22, 36, 52	8 (2%)

All (23) RSRZ outliers are listed below:

Mol	Chain	Res	Type	RSRZ
1	A	87	TYR	11.3
1	A	2[A]	ASP	7.1
1	A	226[A]	GLN	6.5
1	A	174	ALA	6.3
1	A	98[A]	SER	6.3
1	A	184[A]	SER	6.3
1	A	105[A]	GLN	6.1
1	A	132[A]	ASP	5.9
1	A	181[A]	GLU	5.3
1	A	290	THR	4.7
1	A	293	ALA	3.9
1	A	300	LEU	3.9
1	A	172	ASP	3.8
1	A	175	GLY	3.2
1	A	291	GLY	3.1
1	A	302	PRO	2.9
1	A	173	LEU	2.8
1	A	288	SER	2.8
1	A	303	LEU	2.6
1	A	294	LEU	2.4
1	A	298	ALA	2.3
1	A	295	GLY	2.1
1	A	297	PRO	2.1

6.2 Non-standard residues in protein, DNA, RNA chains [i](#)

There are no non-standard protein/DNA/RNA residues in this entry.

6.3 Carbohydrates [i](#)

There are no monosaccharides in this entry.

6.4 Ligands [i](#)

In the following table, the Atoms column lists the number of modelled atoms in the group and the number defined in the chemical component dictionary. The B-factors column lists the minimum, median, 95th percentile and maximum values of B factors of atoms in the group. The column labelled 'Q< 0.9' lists the number of atoms with occupancy less than 0.9.

Mol	Type	Chain	Res	Atoms	RSCC	RSR	B-factors(Å ²)	Q<0.9
3	DMS	A	405	4/4	0.76	0.26	46,52,53,54	0
2	S0V	A	401	13/13	0.82	0.24	28,31,34,34	13
3	DMS	A	404	4/4	0.89	0.39	59,65,67,68	0
3	DMS	A	402	4/4	0.91	0.12	38,46,48,50	0
3	DMS	A	403	4/4	0.92	0.18	41,50,50,53	0

6.5 Other polymers [i](#)

There are no such residues in this entry.