



Full wwPDB X-ray Structure Validation Report ⓘ

Jun 21, 2024 – 07:43 AM EDT

PDB ID : 5QF1
Title : PanDDA analysis group deposition – Crystal structure of PTP1B in complex with compound_FMSOA000272b
Authors : Keedy, D.A.; Hill, Z.B.; Biel, J.T.; Kang, E.; Rettenmaier, T.J.; Brandao-Neto, J.; von Delft, F.; Wells, J.A.; Fraser, J.S.
Deposited on : 2018-08-30
Resolution : 1.84 Å(reported)

This is a Full wwPDB X-ray Structure Validation Report for a publicly released PDB entry.

We welcome your comments at validation@mail.wwpdb.org

A user guide is available at

<https://www.wwpdb.org/validation/2017/XrayValidationReportHelp>

with specific help available everywhere you see the ⓘ symbol.

The types of validation reports are described at

<http://www.wwpdb.org/validation/2017/FAQs#types>.

The following versions of software and data (see [references ⓘ](#)) were used in the production of this report:

MolProbity : 4.02b-467
Mogul : 1.8.5 (274361), CSD as541be (2020)
Xtriage (Phenix) : 1.13
EDS : 2.37.1
Percentile statistics : 20191225.v01 (using entries in the PDB archive December 25th 2019)
Refmac : 5.8.0158
CCP4 : 7.0.044 (Gargrove)
Ideal geometry (proteins) : Engh & Huber (2001)
Ideal geometry (DNA, RNA) : Parkinson et al. (1996)
Validation Pipeline (wwPDB-VP) : 2.37.1

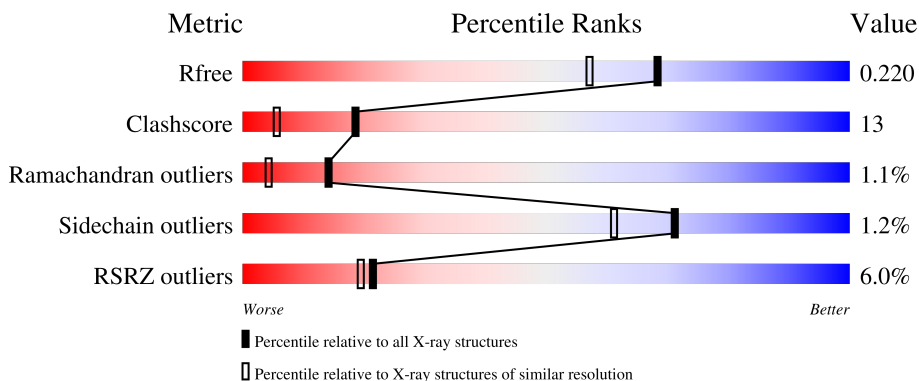
1 Overall quality at a glance

The following experimental techniques were used to determine the structure:

X-RAY DIFFRACTION

The reported resolution of this entry is 1.84 Å.

Percentile scores (ranging between 0-100) for global validation metrics of the entry are shown in the following graphic. The table shows the number of entries on which the scores are based.



Metric	Whole archive (#Entries)	Similar resolution (#Entries, resolution range(Å))
R_{free}	130704	4003 (1.86-1.82)
Clashscore	141614	4233 (1.86-1.82)
Ramachandran outliers	138981	4185 (1.86-1.82)
Sidechain outliers	138945	4186 (1.86-1.82)
RSRZ outliers	127900	3957 (1.86-1.82)

The table below summarises the geometric issues observed across the polymeric chains and their fit to the electron density. The red, orange, yellow and green segments of the lower bar indicate the fraction of residues that contain outliers for ≥ 3 , 2, 1 and 0 types of geometric quality criteria respectively. A grey segment represents the fraction of residues that are not modelled. The numeric value for each fraction is indicated below the corresponding segment, with a dot representing fractions $\leq 5\%$. The upper red bar (where present) indicates the fraction of residues that have poor fit to the electron density. The numeric value is given above the bar.

Mol	Chain	Length	Quality of chain
1	A	321	

2 Entry composition [i](#)

There are 4 unique types of molecules in this entry. The entry contains 17846 atoms, of which 8798 are hydrogens and 0 are deuteriums.

In the tables below, the ZeroOcc column contains the number of atoms modelled with zero occupancy, the AltConf column contains the number of residues with at least one atom in alternate conformation and the Trace column contains the number of residues modelled with at most 2 atoms.

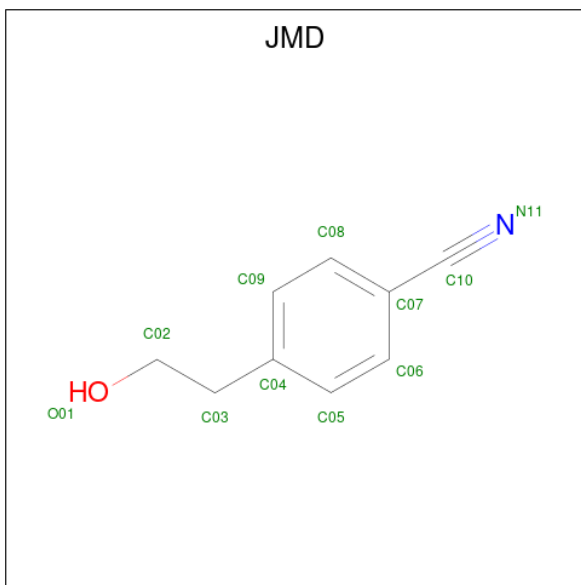
- Molecule 1 is a protein called Tyrosine-protein phosphatase non-receptor type 1.

Mol	Chain	Residues	Atoms					ZeroOcc	AltConf	Trace	
			Total	C	H	N	O				S
1	A	282	17550	5587	8756	1516	1631	60	0	261	0

There are 2 discrepancies between the modelled and reference sequences:

Chain	Residue	Modelled	Actual	Comment	Reference
A	32	SER	CYS	engineered mutation	UNP P18031
A	92	VAL	CYS	engineered mutation	UNP P18031

- Molecule 2 is 4-(2-hydroxyethyl)benzonitrile (three-letter code: JMD) (formula: C₉H₉NO).



Mol	Chain	Residues	Atoms					ZeroOcc	AltConf
			Total	C	H	N	O		
2	A	1	40	18	18	2	2	0	1

- Molecule 3 is 2-AMINO-2-HYDROXYMETHYL-PROPANE-1,3-DIOL (three-letter code: TRS) (formula: C₄H₁₂NO₃).



Mol	Chain	Residues	Atoms					ZeroOcc	AltConf
			Total	C	H	N	O		
3	A	1	40	8	24	2	6	0	1

- Molecule 4 is water.

Mol	Chain	Residues	Atoms		ZeroOcc	AltConf
4	A	216	Total	O	0	0
			216	216		

4 Data and refinement statistics i

Property	Value	Source
Space group	P 31 2 1	Depositor
Cell constants a, b, c, α , β , γ	90.32Å 90.32Å 106.74Å 90.00° 90.00° 120.00°	Depositor
Resolution (Å)	63.09 – 1.84 63.09 – 1.84	Depositor EDS
% Data completeness (in resolution range)	99.8 (63.09-1.84) 99.8 (63.09-1.84)	Depositor EDS
R_{merge}	0.07	Depositor
R_{sym}	(Not available)	Depositor
$\langle I/\sigma(I) \rangle$ ¹	1.24 (at 1.84Å)	Xtrriage
Refinement program	PHENIX 1.10.1_2155	Depositor
R, R_{free}	0.188 , 0.218 0.188 , 0.220	Depositor DCC
R_{free} test set	1725 reflections (3.94%)	wwPDB-VP
Wilson B-factor (Å ²)	36.1	Xtrriage
Anisotropy	0.202	Xtrriage
Bulk solvent k_{sol} (e/Å ³), B_{sol} (Å ²)	0.33 , 50.5	EDS
L-test for twinning ²	$\langle L \rangle = 0.49$, $\langle L^2 \rangle = 0.33$	Xtrriage
Estimated twinning fraction	0.020 for -h,-k,l	Xtrriage
F_o, F_c correlation	0.96	EDS
Total number of atoms	17846	wwPDB-VP
Average B, all atoms (Å ²)	47.0	wwPDB-VP

Xtrriage's analysis on translational NCS is as follows: *The largest off-origin peak in the Patterson function is 4.13% of the height of the origin peak. No significant pseudotranslation is detected.*

¹Intensities estimated from amplitudes.

²Theoretical values of $\langle |L| \rangle$, $\langle L^2 \rangle$ for acentric reflections are 0.5, 0.333 respectively for untwinned datasets, and 0.375, 0.2 for perfectly twinned datasets.

5 Model quality [i](#)

5.1 Standard geometry [i](#)

Bond lengths and bond angles in the following residue types are not validated in this section: JMD, TRS

The Z score for a bond length (or angle) is the number of standard deviations the observed value is removed from the expected value. A bond length (or angle) with $|Z| > 5$ is considered an outlier worth inspection. RMSZ is the root-mean-square of all Z scores of the bond lengths (or angles).

Mol	Chain	Bond lengths		Bond angles	
		RMSZ	# Z >5	RMSZ	# Z >5
1	A	0.52	4/8993 (0.0%)	0.67	8/12101 (0.1%)

Chiral center outliers are detected by calculating the chiral volume of a chiral center and verifying if the center is modelled as a planar moiety or with the opposite hand. A planarity outlier is detected by checking planarity of atoms in a peptide group, atoms in a mainchain group or atoms of a sidechain that are expected to be planar.

Mol	Chain	#Chirality outliers	#Planarity outliers
1	A	0	2

All (4) bond length outliers are listed below:

Mol	Chain	Res	Type	Atoms	Z	Observed(Å)	Ideal(Å)
1	A	155[A]	VAL	CB-CG2	-5.50	1.41	1.52
1	A	155[B]	VAL	CB-CG2	-5.50	1.41	1.52
1	A	155[C]	VAL	CB-CG2	-5.50	1.41	1.52
1	A	155[D]	VAL	CB-CG2	-5.50	1.41	1.52

All (8) bond angle outliers are listed below:

Mol	Chain	Res	Type	Atoms	Z	Observed(°)	Ideal(°)
1	A	79[A]	ARG	NE-CZ-NH2	-5.41	117.59	120.30
1	A	79[B]	ARG	NE-CZ-NH2	-5.41	117.59	120.30
1	A	79[C]	ARG	NE-CZ-NH2	-5.41	117.59	120.30
1	A	79[D]	ARG	NE-CZ-NH2	-5.41	117.59	120.30
1	A	79[A]	ARG	NE-CZ-NH1	5.16	122.88	120.30
1	A	79[B]	ARG	NE-CZ-NH1	5.16	122.88	120.30
1	A	79[C]	ARG	NE-CZ-NH1	5.16	122.88	120.30
1	A	79[D]	ARG	NE-CZ-NH1	5.16	122.88	120.30

There are no chirality outliers.

All (2) planarity outliers are listed below:

Mol	Chain	Res	Type	Group
1	A	192[C]	LEU	Mainchain
1	A	192[D]	LEU	Mainchain

5.2 Too-close contacts [i](#)

In the following table, the Non-H and H(model) columns list the number of non-hydrogen atoms and hydrogen atoms in the chain respectively. The H(added) column lists the number of hydrogen atoms added and optimized by MolProbity. The Clashes column lists the number of clashes within the asymmetric unit, whereas Symm-Clashes lists symmetry-related clashes.

Mol	Chain	Non-H	H(model)	H(added)	Clashes	Symm-Clashes
1	A	8794	8756	8711	232	2
2	A	22	18	0	0	0
3	A	16	24	22	0	0
4	A	216	0	0	62	2
All	All	9048	8798	8733	232	2

The all-atom clashscore is defined as the number of clashes found per 1000 atoms (including hydrogen atoms). The all-atom clashscore for this structure is 13.

All (232) close contacts within the same asymmetric unit are listed below, sorted by their clash magnitude.

Atom-1	Atom-2	Interatomic distance (Å)	Clash overlap (Å)
1:A:61[C]:GLN:NE2	4:A:502:HOH:O	1.56	1.27
1:A:61[D]:GLN:NE2	4:A:502:HOH:O	1.56	1.27
1:A:200[A]:GLU:OE2	4:A:503:HOH:O	1.75	1.01
1:A:200[B]:GLU:OE2	4:A:503:HOH:O	1.75	1.01
1:A:9[C]:GLN:HA	1:A:12[C]:LYS:HE3	1.47	0.96
1:A:9[D]:GLN:HA	1:A:12[D]:LYS:HE3	1.47	0.96
1:A:73[C]:LYS:HD2	4:A:506:HOH:O	1.71	0.91
1:A:73[D]:LYS:HD2	4:A:506:HOH:O	1.71	0.91
1:A:16[C]:TRP:CE2	1:A:268[C]:ARG:HG3	2.07	0.90
1:A:16[D]:TRP:CE2	1:A:268[D]:ARG:HG3	2.07	0.90
1:A:46[C]:TYR:HB2	1:A:49[C]:VAL:HG23	1.58	0.85
1:A:46[D]:TYR:HB2	1:A:49[D]:VAL:HG23	1.58	0.85
1:A:3[D]:MET:HE1	1:A:274:VAL:HG11	1.59	0.85
1:A:38[C]:PRO:HD2	4:A:626:HOH:O	1.78	0.83
1:A:38[D]:PRO:HD2	4:A:626:HOH:O	1.78	0.83

Continued on next page...

Continued from previous page...

Atom-1	Atom-2	Interatomic distance (Å)	Clash overlap (Å)
1:A:3[C]:MET:HE1	1:A:274:VAL:HG11	1.59	0.83
1:A:247[C]:LYS:HE3	4:A:505:HOH:O	1.78	0.82
1:A:247[D]:LYS:HE3	4:A:505:HOH:O	1.78	0.82
1:A:155[C]:VAL:HG22	1:A:174[C]:PHE:CD1	2.15	0.82
1:A:155[D]:VAL:HG22	1:A:174[D]:PHE:CD1	2.15	0.82
1:A:200[C]:GLU:OE2	4:A:503:HOH:O	2.01	0.79
1:A:200[D]:GLU:OE2	4:A:503:HOH:O	2.01	0.79
1:A:245[A]:ASP:OD1	4:A:505:HOH:O	2.00	0.78
1:A:245[B]:ASP:OD1	4:A:505:HOH:O	2.00	0.78
1:A:282[C]:MET:O	4:A:504:HOH:O	2.00	0.78
1:A:282[D]:MET:O	4:A:504:HOH:O	2.00	0.78
1:A:34[C]:VAL:HG23	1:A:53[C]:ASP:OD1	1.84	0.77
1:A:34[D]:VAL:HG23	1:A:53[D]:ASP:OD1	1.84	0.77
1:A:282[A]:MET:O	4:A:504:HOH:O	2.02	0.77
1:A:282[B]:MET:O	4:A:504:HOH:O	2.02	0.77
1:A:247[C]:LYS:HE2	1:A:271[C]:TYR:OH	1.88	0.74
1:A:247[D]:LYS:HE2	1:A:271[D]:TYR:OH	1.88	0.74
1:A:197[C]:LYS:HE2	4:A:524:HOH:O	1.86	0.74
1:A:197[D]:LYS:HE2	4:A:524:HOH:O	1.86	0.74
1:A:245[C]:ASP:OD1	4:A:505:HOH:O	2.08	0.72
1:A:245[D]:ASP:OD1	4:A:505:HOH:O	2.08	0.72
1:A:73[C]:LYS:NZ	4:A:506:HOH:O	2.14	0.71
1:A:73[D]:LYS:NZ	4:A:506:HOH:O	2.14	0.71
1:A:9[C]:GLN:HA	1:A:12[C]:LYS:CE	2.19	0.71
1:A:9[D]:GLN:HA	1:A:12[D]:LYS:CE	2.19	0.71
1:A:124[A]:TYR:HH	1:A:214[A]:HIS:HE1	1.37	0.70
1:A:124[B]:TYR:HH	1:A:214[B]:HIS:HE1	1.37	0.70
1:A:73[C]:LYS:CD	4:A:506:HOH:O	2.35	0.69
1:A:73[D]:LYS:CD	4:A:506:HOH:O	2.35	0.69
1:A:247[C]:LYS:CE	4:A:505:HOH:O	2.38	0.68
1:A:247[D]:LYS:CE	4:A:505:HOH:O	2.38	0.68
1:A:194[C]:PHE:O	1:A:198[C]:VAL:HG23	1.94	0.68
1:A:194[D]:PHE:O	1:A:198[D]:VAL:HG23	1.94	0.68
1:A:3[D]:MET:CE	1:A:274:VAL:HG11	2.24	0.67
1:A:16[C]:TRP:NE1	1:A:268[C]:ARG:HG3	2.10	0.67
1:A:16[D]:TRP:NE1	1:A:268[D]:ARG:HG3	2.10	0.67
1:A:2[C]:GLU:CD	1:A:4[C]:GLU:HB2	2.16	0.66
1:A:2[D]:GLU:CD	1:A:4[D]:GLU:HB2	2.16	0.66
1:A:153[B]:TYR:HE1	1:A:155[B]:VAL:CG2	2.09	0.65
1:A:2[A]:GLU:HG2	1:A:3[A]:MET:N	2.12	0.65
1:A:2[B]:GLU:HG2	1:A:3[B]:MET:N	2.12	0.65

Continued on next page...

Continued from previous page...

Atom-1	Atom-2	Interatomic distance (Å)	Clash overlap (Å)
1:A:2[C]:GLU:OE1	1:A:4[C]:GLU:HB2	1.97	0.65
1:A:2[D]:GLU:OE1	1:A:4[D]:GLU:HB2	1.97	0.65
1:A:245[C]:ASP:O	1:A:249[C]:VAL:HG23	2.00	0.61
1:A:245[D]:ASP:O	1:A:249[D]:VAL:HG23	2.00	0.61
1:A:3[C]:MET:CE	1:A:274:VAL:HG11	2.24	0.61
1:A:83[B]:LEU:HD11	1:A:226[B]:CYS:SG	2.41	0.61
1:A:112[C]:ARG:NH2	1:A:181[C]:ASP:OD1	2.34	0.61
1:A:112[D]:ARG:NH2	1:A:181[D]:ASP:OD1	2.34	0.61
1:A:155[C]:VAL:CG2	1:A:174[C]:PHE:CD1	2.83	0.60
1:A:155[D]:VAL:CG2	1:A:174[D]:PHE:CD1	2.83	0.60
1:A:132[C]:GLU:HG3	1:A:141[C]:LYS:HE3	1.83	0.60
1:A:132[D]:GLU:HG3	1:A:141[D]:LYS:HE3	1.83	0.60
1:A:124[A]:TYR:OH	1:A:214[A]:HIS:HE1	1.83	0.60
1:A:124[B]:TYR:OH	1:A:214[B]:HIS:HE1	1.83	0.60
1:A:281[A]:ILE:HD13	4:A:657:HOH:O	2.00	0.59
1:A:281[B]:ILE:HD13	4:A:657:HOH:O	2.00	0.59
1:A:97:GLU:O	1:A:101[C]:GLU:HG3	2.01	0.59
1:A:97:GLU:O	1:A:101[D]:GLU:HG3	2.01	0.59
1:A:92[C]:VAL:HG13	1:A:135[C]:PHE:CE1	2.38	0.59
1:A:92[D]:VAL:HG13	1:A:135[D]:PHE:CE1	2.38	0.59
1:A:3[C]:MET:CE	1:A:274:VAL:CG1	2.81	0.59
1:A:3[D]:MET:CE	1:A:274:VAL:CG1	2.81	0.59
1:A:46[C]:TYR:CB	1:A:49[C]:VAL:HG23	2.32	0.58
1:A:46[D]:TYR:CB	1:A:49[D]:VAL:HG23	2.32	0.58
1:A:281[C]:ILE:HG23	1:A:281[C]:ILE:O	2.04	0.58
1:A:281[D]:ILE:O	1:A:281[D]:ILE:HG23	2.04	0.58
1:A:1[C]:MET:N	4:A:517:HOH:O	2.37	0.58
1:A:1[D]:MET:N	4:A:517:HOH:O	2.37	0.58
1:A:45[C]:ARG:NH2	1:A:88[C]:LEU:HD23	2.19	0.58
1:A:45[D]:ARG:NH2	1:A:88[D]:LEU:HD23	2.19	0.58
1:A:17:ALA:O	1:A:21[D]:GLN:HB2	2.04	0.57
1:A:153[B]:TYR:HE1	1:A:155[B]:VAL:HG23	1.69	0.57
1:A:2[A]:GLU:HG2	1:A:3[A]:MET:H	1.69	0.57
1:A:2[B]:GLU:HG2	1:A:3[B]:MET:H	1.69	0.57
1:A:17:ALA:O	1:A:21[C]:GLN:HB2	2.04	0.57
1:A:32[C]:SER:O	1:A:36[C]:LYS:HD2	2.05	0.57
1:A:32[D]:SER:O	1:A:36[D]:LYS:HD2	2.05	0.57
1:A:280[C]:PHE:C	1:A:280[C]:PHE:CD1	2.78	0.57
1:A:280[D]:PHE:C	1:A:280[D]:PHE:CD1	2.78	0.57
1:A:30[C]:PHE:HB3	1:A:31[C]:PRO:HD2	1.86	0.56
1:A:30[D]:PHE:HB3	1:A:31[D]:PRO:HD2	1.86	0.56

Continued on next page...

Continued from previous page...

Atom-1	Atom-2	Interatomic distance (Å)	Clash overlap (Å)
1:A:124[C]:TYR:HH	1:A:214[C]:HIS:HE1	1.53	0.55
1:A:124[D]:TYR:HH	1:A:214[D]:HIS:HE1	1.53	0.55
1:A:21[C]:GLN:O	1:A:24[C]:ARG:HB2	2.05	0.55
1:A:21[D]:GLN:O	1:A:24[D]:ARG:HB2	2.05	0.55
1:A:112[C]:ARG:HH11	1:A:112[C]:ARG:HG3	1.72	0.55
1:A:112[D]:ARG:HH11	1:A:112[D]:ARG:HG3	1.72	0.55
1:A:155[C]:VAL:CG2	1:A:174[C]:PHE:CE1	2.90	0.55
1:A:155[D]:VAL:CG2	1:A:174[D]:PHE:CE1	2.90	0.55
1:A:156[A]:ARG:HH11	1:A:173[A]:HIS:HD2	1.54	0.55
1:A:156[B]:ARG:HH11	1:A:173[B]:HIS:HD2	1.54	0.55
1:A:211[C]:VAL:HB	4:A:621:HOH:O	2.06	0.54
1:A:211[D]:VAL:HB	4:A:621:HOH:O	2.06	0.54
1:A:92[C]:VAL:HG13	1:A:135[C]:PHE:HE1	1.72	0.54
1:A:92[D]:VAL:HG13	1:A:135[D]:PHE:HE1	1.72	0.54
1:A:34[C]:VAL:CG2	1:A:53[C]:ASP:OD1	2.55	0.54
1:A:34[D]:VAL:CG2	1:A:53[D]:ASP:OD1	2.55	0.54
1:A:132[C]:GLU:HG3	1:A:141[C]:LYS:CE	2.38	0.54
1:A:132[D]:GLU:HG3	1:A:141[D]:LYS:CE	2.38	0.54
1:A:6[C]:GLU:O	1:A:9[C]:GLN:HB3	2.08	0.53
1:A:6[D]:GLU:O	1:A:9[D]:GLN:HB3	2.08	0.53
1:A:153[B]:TYR:CE1	1:A:155[B]:VAL:HG23	2.44	0.53
1:A:247[C]:LYS:HE2	1:A:271[C]:TYR:HH	1.73	0.53
1:A:247[D]:LYS:HE2	1:A:271[D]:TYR:HH	1.73	0.53
1:A:60[C]:HIS:HB2	1:A:101[C]:GLU:OE2	2.09	0.53
1:A:60[D]:HIS:HB2	1:A:101[D]:GLU:OE2	2.09	0.53
1:A:70[C]:SER:OG	1:A:257[C]:ARG:HD2	2.09	0.52
1:A:70[D]:SER:OG	1:A:257[D]:ARG:HD2	2.09	0.52
1:A:73[C]:LYS:CE	4:A:506:HOH:O	2.50	0.52
1:A:73[D]:LYS:CE	4:A:506:HOH:O	2.50	0.52
1:A:252[C]:GLU:OE2	4:A:507:HOH:O	2.18	0.52
1:A:252[D]:GLU:OE2	4:A:507:HOH:O	2.18	0.52
1:A:124[A]:TYR:OH	1:A:173[A]:HIS:HE1	1.93	0.51
1:A:124[B]:TYR:OH	1:A:173[B]:HIS:HE1	1.93	0.51
1:A:92[A]:VAL:HG12	1:A:135[A]:PHE:CE1	2.45	0.51
1:A:92[B]:VAL:HG12	1:A:135[B]:PHE:CE1	2.45	0.51
1:A:46[C]:TYR:HB2	1:A:49[C]:VAL:CG2	2.37	0.51
1:A:46[D]:TYR:HB2	1:A:49[D]:VAL:CG2	2.37	0.51
1:A:155[C]:VAL:HG21	1:A:174[C]:PHE:CE1	2.46	0.51
1:A:155[D]:VAL:HG21	1:A:174[D]:PHE:CE1	2.46	0.51
1:A:245[C]:ASP:OD2	1:A:248[C]:LYS:HD2	2.10	0.51
1:A:245[D]:ASP:OD2	1:A:248[D]:LYS:HD2	2.10	0.51

Continued on next page...

Continued from previous page...

Atom-1	Atom-2	Interatomic distance (Å)	Clash overlap (Å)
1:A:116[A]:LYS:NZ	4:A:508:HOH:O	2.23	0.51
1:A:116[B]:LYS:NZ	4:A:508:HOH:O	2.23	0.51
1:A:258[C]:MET:HG2	4:A:540:HOH:O	2.10	0.51
1:A:258[D]:MET:HG2	4:A:540:HOH:O	2.10	0.51
1:A:161[C]:GLU:HG3	1:A:168[C]:THR:HG23	1.93	0.50
1:A:161[D]:GLU:HG3	1:A:168[D]:THR:HG23	1.93	0.50
1:A:16[C]:TRP:CZ2	1:A:268[C]:ARG:HG3	2.46	0.50
1:A:16[D]:TRP:CZ2	1:A:268[D]:ARG:HG3	2.46	0.50
1:A:164[C]:THR:HG22	1:A:165[C]:THR:HG23	1.92	0.50
1:A:164[D]:THR:HG22	1:A:165[D]:THR:HG23	1.92	0.50
1:A:2[C]:GLU:OE1	1:A:4[C]:GLU:N	2.33	0.49
1:A:2[D]:GLU:OE1	1:A:4[D]:GLU:N	2.33	0.49
1:A:3[A]:MET:HE1	1:A:274:VAL:HG12	1.93	0.49
1:A:3[B]:MET:HE1	1:A:274:VAL:HG12	1.93	0.49
1:A:197[C]:LYS:CE	4:A:524:HOH:O	2.53	0.49
1:A:197[D]:LYS:CE	4:A:524:HOH:O	2.53	0.49
1:A:112[C]:ARG:HG3	1:A:112[C]:ARG:NH1	2.27	0.49
1:A:112[D]:ARG:HG3	1:A:112[D]:ARG:NH1	2.27	0.49
1:A:3[D]:MET:HE3	1:A:274:VAL:HG12	1.94	0.49
1:A:3[C]:MET:HE3	1:A:274:VAL:HG12	1.94	0.49
1:A:155[C]:VAL:HG22	1:A:174[C]:PHE:CE1	2.48	0.49
1:A:155[D]:VAL:HG22	1:A:174[D]:PHE:CE1	2.48	0.49
1:A:145[C]:ILE:HD11	1:A:159[C]:GLU:HB3	1.97	0.47
1:A:145[D]:ILE:HD11	1:A:159[D]:GLU:HB3	1.97	0.47
1:A:156[A]:ARG:HH11	1:A:173[A]:HIS:CD2	2.33	0.46
1:A:156[B]:ARG:HH11	1:A:173[B]:HIS:CD2	2.33	0.46
1:A:83[C]:LEU:HD22	1:A:260[C]:LEU:HD21	1.97	0.46
1:A:83[D]:LEU:HD22	1:A:260[D]:LEU:HD21	1.97	0.46
1:A:60[C]:HIS:HB2	1:A:101[C]:GLU:CD	2.36	0.46
1:A:60[D]:HIS:HB2	1:A:101[D]:GLU:CD	2.36	0.46
1:A:6[A]:GLU:OE2	1:A:247[A]:LYS:HE3	2.15	0.46
1:A:6[B]:GLU:OE2	1:A:247[B]:LYS:HE3	2.15	0.46
1:A:88[C]:LEU:HB2	1:A:91[C]:THR:OG1	2.14	0.46
1:A:88[D]:LEU:HB2	1:A:91[D]:THR:OG1	2.14	0.46
1:A:19[C]:ILE:O	1:A:22[C]:ASP:HB2	2.16	0.45
1:A:19[D]:ILE:O	1:A:22[D]:ASP:HB2	2.16	0.45
1:A:26[A]:GLU:HG3	4:A:601:HOH:O	2.15	0.45
1:A:26[B]:GLU:HG3	4:A:601:HOH:O	2.15	0.45
1:A:251[C]:LEU:HA	1:A:251[C]:LEU:HD23	1.66	0.45
1:A:251[D]:LEU:HD23	1:A:251[D]:LEU:HA	1.66	0.45
1:A:96[C]:TRP:CZ2	1:A:142[C]:LEU:HD21	2.51	0.45

Continued on next page...

Continued from previous page...

Atom-1	Atom-2	Interatomic distance (Å)	Clash overlap (Å)
1:A:96[D]:TRP:CZ2	1:A:142[D]:LEU:HD21	2.51	0.45
1:A:33[A]:ARG:NH1	4:A:528:HOH:O	2.50	0.44
1:A:33[B]:ARG:NH1	4:A:528:HOH:O	2.50	0.44
1:A:56[C]:ARG:NH1	1:A:65[C]:ASP:OD1	2.43	0.44
1:A:56[D]:ARG:NH1	1:A:65[D]:ASP:OD1	2.43	0.44
1:A:10[C]:ILE:HG21	1:A:16[C]:TRP:CD2	2.53	0.44
1:A:10[D]:ILE:HG21	1:A:16[D]:TRP:CD2	2.53	0.44
1:A:280[C]:PHE:CD1	1:A:280[C]:PHE:O	2.71	0.43
1:A:280[D]:PHE:CD1	1:A:280[D]:PHE:O	2.71	0.43
1:A:79[C]:ARG:HA	4:A:555:HOH:O	2.18	0.43
1:A:79[D]:ARG:HA	4:A:555:HOH:O	2.18	0.43
1:A:141[C]:LYS:HE2	4:A:618:HOH:O	2.19	0.43
1:A:141[D]:LYS:HE2	4:A:618:HOH:O	2.19	0.43
1:A:102[C]:GLN:NE2	4:A:514:HOH:O	2.32	0.43
1:A:102[D]:GLN:NE2	4:A:514:HOH:O	2.32	0.43
1:A:157[C]:GLN:NE2	1:A:170[C]:GLU:OE2	2.52	0.42
1:A:157[D]:GLN:NE2	1:A:170[D]:GLU:OE2	2.52	0.42
1:A:246[C]:ILE:HG22	4:A:658:HOH:O	2.19	0.42
1:A:246[D]:ILE:HG22	4:A:658:HOH:O	2.19	0.42
1:A:10[C]:ILE:O	1:A:10[C]:ILE:CG2	2.67	0.42
1:A:10[D]:ILE:O	1:A:10[D]:ILE:CG2	2.67	0.42
1:A:247[C]:LYS:HE3	1:A:247[C]:LYS:HB2	1.35	0.42
1:A:247[D]:LYS:HE3	1:A:247[D]:LYS:HB2	1.35	0.42
1:A:2[C]:GLU:OE2	1:A:4[C]:GLU:HB2	2.19	0.41
1:A:2[D]:GLU:OE2	1:A:4[D]:GLU:HB2	2.19	0.41
1:A:113:VAL:HG21	1:A:123[D]:GLN:OE1	2.19	0.41
1:A:120[C]:LYS:HA	1:A:120[C]:LYS:HD3	1.81	0.41
1:A:120[D]:LYS:HA	1:A:120[D]:LYS:HD3	1.81	0.41
1:A:6[C]:GLU:O	1:A:9[C]:GLN:CB	2.69	0.41
1:A:6[D]:GLU:O	1:A:9[D]:GLN:CB	2.69	0.41
1:A:37[C]:LEU:HA	1:A:38[C]:PRO:HD3	1.87	0.41
1:A:37[D]:LEU:HA	1:A:38[D]:PRO:HD3	1.87	0.41
1:A:153[A]:TYR:OH	1:A:197[A]:LYS:HG3	2.20	0.41
1:A:153[D]:TYR:HE1	1:A:155[D]:VAL:HG23	1.86	0.41
1:A:6[C]:GLU:O	1:A:6[C]:GLU:HG2	2.21	0.41
1:A:6[D]:GLU:O	1:A:6[D]:GLU:HG2	2.21	0.41
1:A:216[C]:SER:HB3	4:A:665:HOH:O	2.21	0.41
1:A:216[D]:SER:HB3	4:A:665:HOH:O	2.21	0.41
1:A:45[A]:ARG:NH2	1:A:121[A]:CYS:HA	2.35	0.41
1:A:45[B]:ARG:NH2	1:A:121[B]:CYS:HA	2.35	0.41
1:A:113:VAL:HG21	1:A:123[C]:GLN:OE1	2.19	0.41

Continued on next page...

Continued from previous page...

Atom-1	Atom-2	Interatomic distance (Å)	Clash overlap (Å)
1:A:196[C]:PHE:N	1:A:196[C]:PHE:CD1	2.84	0.41
1:A:196[D]:PHE:N	1:A:196[D]:PHE:CD1	2.84	0.41
1:A:271[C]:TYR:O	1:A:275[C]:ILE:HG13	2.21	0.41
1:A:271[D]:TYR:O	1:A:275[D]:ILE:HG13	2.21	0.41
1:A:206[C]:PRO:HD3	4:A:549:HOH:O	2.21	0.41
1:A:206[D]:PRO:HD3	4:A:549:HOH:O	2.21	0.41
1:A:100[C]:TRP:CD1	1:A:100[C]:TRP:C	2.92	0.40
1:A:100[D]:TRP:CD1	1:A:100[D]:TRP:C	2.92	0.40
1:A:32[C]:SER:HB3	1:A:51[C]:PRO:O	2.22	0.40
1:A:32[D]:SER:HB3	1:A:51[D]:PRO:O	2.22	0.40
1:A:57[C]:ILE:HD13	4:A:697:HOH:O	2.22	0.40
1:A:57[D]:ILE:HD13	4:A:697:HOH:O	2.22	0.40

All (2) symmetry-related close contacts are listed below. The label for Atom-2 includes the symmetry operator and encoded unit-cell translations to be applied.

Atom-1	Atom-2	Interatomic distance (Å)	Clash overlap (Å)
1:A:130[C]:GLU:OE2	4:A:506:HOH:O[5_544]	2.15	0.05
1:A:130[D]:GLU:OE2	4:A:506:HOH:O[5_544]	2.15	0.05

5.3 Torsion angles [i](#)

5.3.1 Protein backbone [i](#)

In the following table, the Percentiles column shows the percent Ramachandran outliers of the chain as a percentile score with respect to all X-ray entries followed by that with respect to entries of similar resolution.

The Analysed column shows the number of residues for which the backbone conformation was analysed, and the total number of residues.

Mol	Chain	Analysed	Favoured	Allowed	Outliers	Percentiles
1	A	1057/321 (329%)	985 (93%)	60 (6%)	12 (1%)	14 4

All (12) Ramachandran outliers are listed below:

Mol	Chain	Res	Type
1	A	63[A]	ASP
1	A	63[B]	ASP
1	A	63[C]	ASP

Continued on next page...

Continued from previous page...

Mol	Chain	Res	Type
1	A	63[D]	ASP
1	A	261[A]	ILE
1	A	261[B]	ILE
1	A	261[C]	ILE
1	A	261[D]	ILE
1	A	75[A]	GLU
1	A	75[B]	GLU
1	A	75[C]	GLU
1	A	75[D]	GLU

5.3.2 Protein sidechains [i](#)

In the following table, the Percentiles column shows the percent sidechain outliers of the chain as a percentile score with respect to all X-ray entries followed by that with respect to entries of similar resolution.

The Analysed column shows the number of residues for which the sidechain conformation was analysed, and the total number of residues.

Mol	Chain	Analysed	Rotameric	Outliers	Percentiles
1	A	982/294 (334%)	970 (99%)	12 (1%)	71 61

All (12) residues with a non-rotameric sidechain are listed below:

Mol	Chain	Res	Type
1	A	61[A]	GLN
1	A	61[B]	GLN
1	A	61[C]	GLN
1	A	61[D]	GLN
1	A	72[A]	ILE
1	A	72[B]	ILE
1	A	72[C]	ILE
1	A	72[D]	ILE
1	A	281[A]	ILE
1	A	281[B]	ILE
1	A	281[C]	ILE
1	A	281[D]	ILE

Sometimes sidechains can be flipped to improve hydrogen bonding and reduce clashes. All (1) such sidechains are listed below:

Mol	Chain	Res	Type
1	A	68	ASN

5.3.3 RNA [i](#)

There are no RNA molecules in this entry.

5.4 Non-standard residues in protein, DNA, RNA chains [i](#)

There are no non-standard protein/DNA/RNA residues in this entry.

5.5 Carbohydrates [i](#)

There are no monosaccharides in this entry.

5.6 Ligand geometry [i](#)

4 ligands are modelled in this entry.

In the following table, the Counts columns list the number of bonds (or angles) for which Mogul statistics could be retrieved, the number of bonds (or angles) that are observed in the model and the number of bonds (or angles) that are defined in the Chemical Component Dictionary. The Link column lists molecule types, if any, to which the group is linked. The Z score for a bond length (or angle) is the number of standard deviations the observed value is removed from the expected value. A bond length (or angle) with $|Z| > 2$ is considered an outlier worth inspection. RMSZ is the root-mean-square of all Z scores of the bond lengths (or angles).

Mol	Type	Chain	Res	Link	Bond lengths			Bond angles		
					Counts	RMSZ	# $ Z > 2$	Counts	RMSZ	# $ Z > 2$
3	TRS	A	402[B]	-	7,7,7	0.78	0	9,9,9	0.78	0
2	JMD	A	401[C]	-	11,11,11	3.49	6 (54%)	13,13,13	0.98	1 (7%)
2	JMD	A	401[D]	-	11,11,11	3.49	6 (54%)	13,13,13	0.98	1 (7%)
3	TRS	A	402[A]	-	7,7,7	0.78	0	9,9,9	0.78	0

In the following table, the Chirals column lists the number of chiral outliers, the number of chiral centers analysed, the number of these observed in the model and the number defined in the Chemical Component Dictionary. Similar counts are reported in the Torsion and Rings columns. '-' means no outliers of that kind were identified.

Mol	Type	Chain	Res	Link	Chirals	Torsions	Rings
3	TRS	A	402[B]	-	-	3/9/9/9	-
2	JMD	A	401[C]	-	-	0/5/5/5	0/1/1/1

Continued on next page...

Continued from previous page...

Mol	Type	Chain	Res	Link	Chirals	Torsions	Rings
2	JMD	A	401[D]	-	-	0/5/5/5	0/1/1/1
3	TRS	A	402[A]	-	-	3/9/9/9	-

All (12) bond length outliers are listed below:

Mol	Chain	Res	Type	Atoms	Z	Observed(Å)	Ideal(Å)
2	A	401[C]	JMD	C06-C05	-7.02	1.26	1.38
2	A	401[D]	JMD	C06-C05	-7.02	1.26	1.38
2	A	401[C]	JMD	C07-C10	-5.80	1.31	1.44
2	A	401[D]	JMD	C07-C10	-5.80	1.31	1.44
2	A	401[C]	JMD	C09-C08	-4.42	1.30	1.38
2	A	401[D]	JMD	C09-C08	-4.42	1.30	1.38
2	A	401[C]	JMD	C05-C04	-3.14	1.32	1.38
2	A	401[D]	JMD	C05-C04	-3.14	1.32	1.38
2	A	401[C]	JMD	O01-C02	-2.47	1.29	1.42
2	A	401[D]	JMD	O01-C02	-2.47	1.29	1.42
2	A	401[C]	JMD	C06-C07	2.20	1.44	1.39
2	A	401[D]	JMD	C06-C07	2.20	1.44	1.39

All (2) bond angle outliers are listed below:

Mol	Chain	Res	Type	Atoms	Z	Observed(°)	Ideal(°)
2	A	401[C]	JMD	C06-C05-C04	2.03	123.82	121.03
2	A	401[D]	JMD	C06-C05-C04	2.03	123.82	121.03

There are no chirality outliers.

All (6) torsion outliers are listed below:

Mol	Chain	Res	Type	Atoms
3	A	402[A]	TRS	C2-C-C1-O1
3	A	402[A]	TRS	C3-C-C1-O1
3	A	402[A]	TRS	N-C-C1-O1
3	A	402[B]	TRS	C2-C-C1-O1
3	A	402[B]	TRS	C3-C-C1-O1
3	A	402[B]	TRS	N-C-C1-O1

There are no ring outliers.

No monomer is involved in short contacts.

5.7 Other polymers [i](#)

There are no such residues in this entry.

5.8 Polymer linkage issues [i](#)

The following chains have linkage breaks:

Mol	Chain	Number of breaks
1	A	10

All chain breaks are listed below:

Model	Chain	Residue-1	Atom-1	Residue-2	Atom-2	Distance (Å)
1	A	192[D]:LEU	C	193[D]:ASN	N	1.64
1	A	192[C]:LEU	C	193[C]:ASN	N	1.63
1	A	272[C]:LEU	C	273:ALA	N	1.16
1	A	272[D]:LEU	C	273:ALA	N	1.16
1	A	96[C]:TRP	C	97:GLU	N	1.15
1	A	96[D]:TRP	C	97:GLU	N	1.15
1	A	189:ALA	C	190[C]:SER	N	1.15
1	A	189:ALA	C	190[D]:SER	N	1.15
1	A	151[C]:SER	C	152[C]:TYR	N	1.11
1	A	151[D]:SER	C	152[D]:TYR	N	1.10

6 Fit of model and data [i](#)

6.1 Protein, DNA and RNA chains [i](#)

In the following table, the column labelled ‘#RSRZ> 2’ contains the number (and percentage) of RSRZ outliers, followed by percent RSRZ outliers for the chain as percentile scores relative to all X-ray entries and entries of similar resolution. The OWAB column contains the minimum, median, 95th percentile and maximum values of the occupancy-weighted average B-factor per residue. The column labelled ‘Q< 0.9’ lists the number of (and percentage) of residues with an average occupancy less than 0.9.

Mol	Chain	Analysed	<RSRZ>	#RSRZ>2	OWAB(Å ²)	Q<0.9
1	A	282/321 (87%)	0.70	17 (6%) 21 19	26, 38, 68, 94	0

All (17) RSRZ outliers are listed below:

Mol	Chain	Res	Type	RSRZ
1	A	1[A]	MET	8.0
1	A	280[A]	PHE	5.9
1	A	282[A]	MET	5.2
1	A	12[A]	LYS	4.7
1	A	10[A]	ILE	4.1
1	A	63[A]	ASP	3.6
1	A	9[A]	GLN	3.5
1	A	5[A]	LYS	3.4
1	A	7[A]	PHE	3.4
1	A	62[A]	GLU	3.4
1	A	242[A]	SER	2.9
1	A	281[A]	ILE	2.9
1	A	3[A]	MET	2.8
1	A	2[A]	GLU	2.7
1	A	152[A]	TYR	2.5
1	A	8[A]	GLU	2.3
1	A	22[A]	ASP	2.3

6.2 Non-standard residues in protein, DNA, RNA chains [i](#)

There are no non-standard protein/DNA/RNA residues in this entry.

6.3 Carbohydrates [i](#)

There are no monosaccharides in this entry.

6.4 Ligands

In the following table, the Atoms column lists the number of modelled atoms in the group and the number defined in the chemical component dictionary. The B-factors column lists the minimum, median, 95th percentile and maximum values of B factors of atoms in the group. The column labelled 'Q< 0.9' lists the number of atoms with occupancy less than 0.9.

Mol	Type	Chain	Res	Atoms	RSCC	RSR	B-factors(Å ²)	Q<0.9
2	JMD	A	401[C]	11/11	0.68	0.38	20,34,63,76	20
2	JMD	A	401[D]	11/11	0.68	0.38	20,34,63,76	20
3	TRS	A	402[A]	8/8	0.83	0.28	21,49,84,84	20
3	TRS	A	402[B]	8/8	0.83	0.28	21,49,84,84	20

6.5 Other polymers

There are no such residues in this entry.