



# Full wwPDB X-ray Structure Validation Report ⓘ

Jun 25, 2024 – 08:42 PM EDT

PDB ID : 5QE0  
Title : PanDDA analysis group deposition – Crystal structure of PTP1B in complex with compound\_FMOPL000648a  
Authors : Keedy, D.A.; Hill, Z.B.; Biel, J.T.; Kang, E.; Rettenmaier, T.J.; Brandao-Neto, J.; von Delft, F.; Wells, J.A.; Fraser, J.S.  
Deposited on : 2018-08-30  
Resolution : 1.98 Å(reported)

This is a Full wwPDB X-ray Structure Validation Report for a publicly released PDB entry.

We welcome your comments at [validation@mail.wwpdb.org](mailto:validation@mail.wwpdb.org)

A user guide is available at

<https://www.wwpdb.org/validation/2017/XrayValidationReportHelp>

with specific help available everywhere you see the ⓘ symbol.

The types of validation reports are described at

<http://www.wwpdb.org/validation/2017/FAQs#types>.

---

The following versions of software and data (see [references ⓘ](#)) were used in the production of this report:

MolProbity : 4.02b-467  
Mogul : 1.8.5 (274361), CSD as541be (2020)  
Xtriage (Phenix) : 1.13  
EDS : 2.37.1  
Percentile statistics : 20191225.v01 (using entries in the PDB archive December 25th 2019)  
Refmac : 5.8.0158  
CCP4 : 7.0.044 (Gargrove)  
Ideal geometry (proteins) : Engh & Huber (2001)  
Ideal geometry (DNA, RNA) : Parkinson et al. (1996)  
Validation Pipeline (wwPDB-VP) : 2.37.1

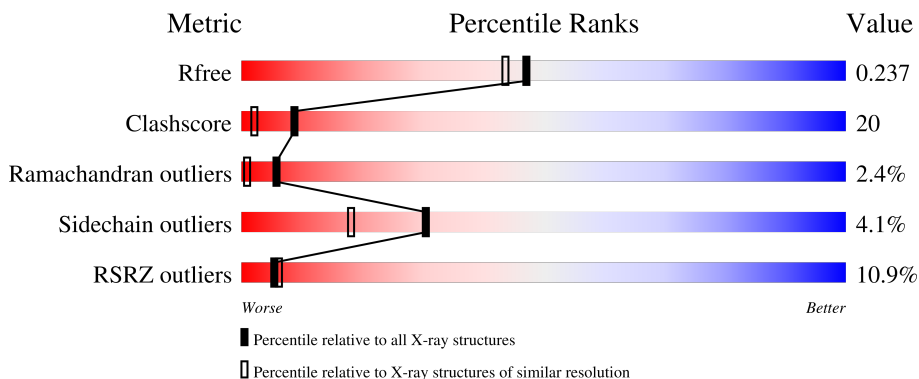
# 1 Overall quality at a glance

The following experimental techniques were used to determine the structure:

*X-RAY DIFFRACTION*

The reported resolution of this entry is 1.98 Å.

Percentile scores (ranging between 0-100) for global validation metrics of the entry are shown in the following graphic. The table shows the number of entries on which the scores are based.



Metric	Whole archive (#Entries)	Similar resolution (#Entries, resolution range(Å))
$R_{free}$	130704	11647 (2.00-1.96)
Clashscore	141614	1014 (1.98-1.98)
Ramachandran outliers	138981	1006 (1.98-1.98)
Sidechain outliers	138945	1006 (1.98-1.98)
RSRZ outliers	127900	11410 (2.00-1.96)

The table below summarises the geometric issues observed across the polymeric chains and their fit to the electron density. The red, orange, yellow and green segments of the lower bar indicate the fraction of residues that contain outliers for  $\geq 3$ , 2, 1 and 0 types of geometric quality criteria respectively. A grey segment represents the fraction of residues that are not modelled. The numeric value for each fraction is indicated below the corresponding segment, with a dot representing fractions  $\leq 5\%$ . The upper red bar (where present) indicates the fraction of residues that have poor fit to the electron density. The numeric value is given above the bar.

Mol	Chain	Length	Quality of chain
1	A	321	

The following table lists non-polymeric compounds, carbohydrate monomers and non-standard residues in protein, DNA, RNA chains that are outliers for geometric or electron-density-fit criteria:

Mol	Type	Chain	Res	Chirality	Geometry	Clashes	Electron density
2	JGS	A	401[C]	-	-	-	X

*Continued on next page...*

*Continued from previous page...*

<b>Mol</b>	<b>Type</b>	<b>Chain</b>	<b>Res</b>	<b>Chirality</b>	<b>Geometry</b>	<b>Clashes</b>	<b>Electron density</b>
2	JGS	A	401[D]	-	-	-	X
2	JGS	A	402[C]	-	-	-	X
2	JGS	A	402[D]	-	-	-	X

## 2 Entry composition [i](#)

There are 4 unique types of molecules in this entry. The entry contains 17941 atoms, of which 8839 are hydrogens and 0 are deuteriums.

In the tables below, the ZeroOcc column contains the number of atoms modelled with zero occupancy, the AltConf column contains the number of residues with at least one atom in alternate conformation and the Trace column contains the number of residues modelled with at most 2 atoms.

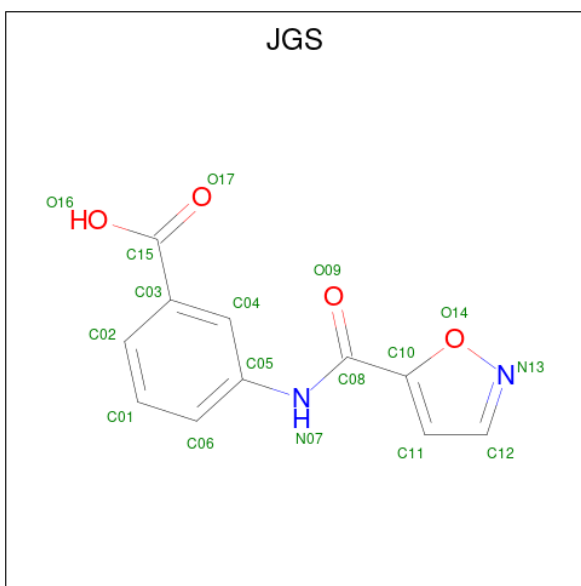
- Molecule 1 is a protein called Tyrosine-protein phosphatase non-receptor type 1.

Mol	Chain	Residues	Atoms					ZeroOcc	AltConf	Trace	
			Total	C	H	N	O				S
1	A	294	17649	5606	8799	1521	1666	57	0	270	0

There are 2 discrepancies between the modelled and reference sequences:

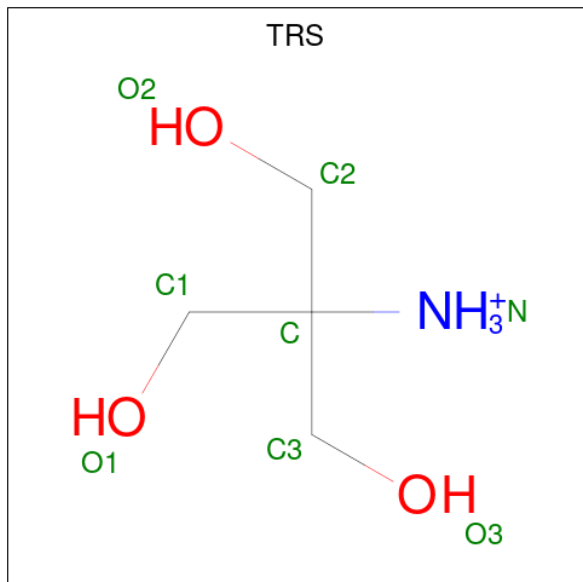
Chain	Residue	Modelled	Actual	Comment	Reference
A	32	SER	CYS	engineered mutation	UNP P18031
A	92	VAL	CYS	engineered mutation	UNP P18031

- Molecule 2 is 3-[(1,2-oxazole-5-carbonyl)amino]benzoic acid (three-letter code: JGS) (formula: C<sub>11</sub>H<sub>8</sub>N<sub>2</sub>O<sub>4</sub>).



Mol	Chain	Residues	Atoms					ZeroOcc	AltConf
			Total	C	H	N	O		
2	A	1	48	22	14	4	8	0	1
2	A	1	48	22	14	4	8	0	1

- Molecule 3 is 2-AMINO-2-HYDROXYMETHYL-PROPANE-1,3-DIOL (three-letter code: TRS) (formula: C<sub>4</sub>H<sub>12</sub>NO<sub>3</sub>).



Mol	Chain	Residues	Atoms					ZeroOcc	AltConf
			Total	C	H	N	O		
3	A	1	20	4	12	1	3	0	0

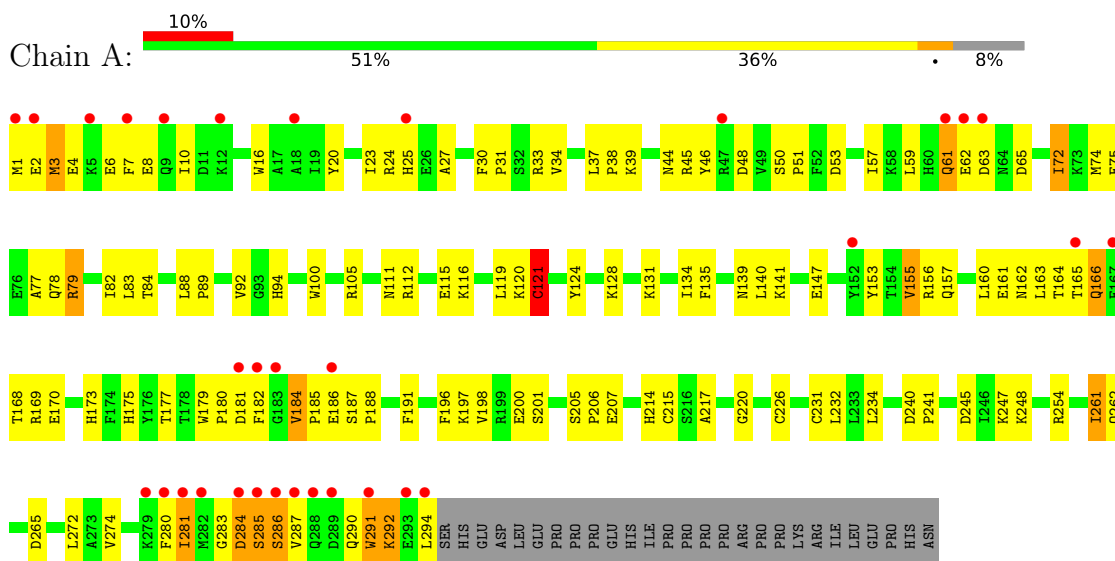
- Molecule 4 is water.

Mol	Chain	Residues	Atoms		ZeroOcc	AltConf
4	A	176	Total	O	0	0
			176	176		

### 3 Residue-property plots [i](#)

These plots are drawn for all protein, RNA, DNA and oligosaccharide chains in the entry. The first graphic for a chain summarises the proportions of the various outlier classes displayed in the second graphic. The second graphic shows the sequence view annotated by issues in geometry and electron density. Residues are color-coded according to the number of geometric quality criteria for which they contain at least one outlier: green = 0, yellow = 1, orange = 2 and red = 3 or more. A red dot above a residue indicates a poor fit to the electron density ( $RSRZ > 2$ ). Stretches of 2 or more consecutive residues without any outlier are shown as a green connector. Residues present in the sample, but not in the model, are shown in grey.

- Molecule 1: Tyrosine-protein phosphatase non-receptor type 1



## 4 Data and refinement statistics i

Property	Value	Source
Space group	P 31 2 1	Depositor
Cell constants a, b, c, $\alpha$ , $\beta$ , $\gamma$	89.50Å 89.50Å 106.17Å 90.00° 90.00° 120.00°	Depositor
Resolution (Å)	44.75 – 1.98 44.75 – 1.98	Depositor EDS
% Data completeness (in resolution range)	100.0 (44.75-1.98) 99.9 (44.75-1.98)	Depositor EDS
$R_{merge}$	0.12	Depositor
$R_{sym}$	(Not available)	Depositor
$\langle I/\sigma(I) \rangle$ <sup>1</sup>	1.46 (at 1.98Å)	Xtrriage
Refinement program	PHENIX 1.10.1_2155	Depositor
R, $R_{free}$	0.198 , 0.234 0.199 , 0.237	Depositor DCC
$R_{free}$ test set	1369 reflections (3.94%)	wwPDB-VP
Wilson B-factor (Å <sup>2</sup> )	32.7	Xtrriage
Anisotropy	0.034	Xtrriage
Bulk solvent $k_{sol}$ (e/Å <sup>3</sup> ), $B_{sol}$ (Å <sup>2</sup> )	0.35 , 64.9	EDS
L-test for twinning <sup>2</sup>	$\langle  L  \rangle = 0.49$ , $\langle L^2 \rangle = 0.32$	Xtrriage
Estimated twinning fraction	0.032 for -h,-k,l	Xtrriage
$F_o, F_c$ correlation	0.95	EDS
Total number of atoms	17941	wwPDB-VP
Average B, all atoms (Å <sup>2</sup> )	44.0	wwPDB-VP

Xtrriage's analysis on translational NCS is as follows: *The largest off-origin peak in the Patterson function is 4.28% of the height of the origin peak. No significant pseudotranslation is detected.*

<sup>1</sup>Intensities estimated from amplitudes.

<sup>2</sup>Theoretical values of  $\langle |L| \rangle$ ,  $\langle L^2 \rangle$  for acentric reflections are 0.5, 0.333 respectively for untwinned datasets, and 0.375, 0.2 for perfectly twinned datasets.

## 5 Model quality [i](#)

### 5.1 Standard geometry [i](#)

Bond lengths and bond angles in the following residue types are not validated in this section: JGS, TRS

The Z score for a bond length (or angle) is the number of standard deviations the observed value is removed from the expected value. A bond length (or angle) with  $|Z| > 5$  is considered an outlier worth inspection. RMSZ is the root-mean-square of all Z scores of the bond lengths (or angles).

Mol	Chain	Bond lengths		Bond angles	
		RMSZ	# $ Z  > 5$	RMSZ	# $ Z  > 5$
1	A	0.55	4/9039 (0.0%)	0.67	6/12159 (0.0%)

Chiral center outliers are detected by calculating the chiral volume of a chiral center and verifying if the center is modelled as a planar moiety or with the opposite hand. A planarity outlier is detected by checking planarity of atoms in a peptide group, atoms in a mainchain group or atoms of a sidechain that are expected to be planar.

Mol	Chain	#Chirality outliers	#Planarity outliers
1	A	0	2

All (4) bond length outliers are listed below:

Mol	Chain	Res	Type	Atoms	Z	Observed(Å)	Ideal(Å)
1	A	155[A]	VAL	CB-CG2	-5.83	1.40	1.52
1	A	155[B]	VAL	CB-CG2	-5.83	1.40	1.52
1	A	155[C]	VAL	CB-CG2	-5.83	1.40	1.52
1	A	155[D]	VAL	CB-CG2	-5.83	1.40	1.52

All (6) bond angle outliers are listed below:

Mol	Chain	Res	Type	Atoms	Z	Observed(°)	Ideal(°)
1	A	121[A]	CYS	CA-CB-SG	5.09	123.16	114.00
1	A	121[B]	CYS	CA-CB-SG	5.09	123.16	114.00
1	A	121[C]	CYS	CA-CB-SG	5.09	123.16	114.00
1	A	121[D]	CYS	CA-CB-SG	5.09	123.16	114.00
1	A	283[C]	GLY	N-CA-C	5.01	125.63	113.10
1	A	283[D]	GLY	N-CA-C	5.01	125.63	113.10

There are no chirality outliers.

All (2) planarity outliers are listed below:



Mol	Chain	Res	Type	Group
1	A	291[C]	TRP	Mainchain
1	A	291[D]	TRP	Mainchain

## 5.2 Too-close contacts [i](#)

In the following table, the Non-H and H(model) columns list the number of non-hydrogen atoms and hydrogen atoms in the chain respectively. The H(added) column lists the number of hydrogen atoms added and optimized by MolProbity. The Clashes column lists the number of clashes within the asymmetric unit, whereas Symm-Clashes lists symmetry-related clashes.

Mol	Chain	Non-H	H(model)	H(added)	Clashes	Symm-Clashes
1	A	8850	8799	8741	363	0
2	A	68	28	0	12	0
3	A	8	12	12	0	0
4	A	176	0	0	44	2
All	All	9102	8839	8753	363	2

The all-atom clashscore is defined as the number of clashes found per 1000 atoms (including hydrogen atoms). The all-atom clashscore for this structure is 20.

All (363) close contacts within the same asymmetric unit are listed below, sorted by their clash magnitude.

Atom-1	Atom-2	Interatomic distance (Å)	Clash overlap (Å)
1:A:168[C]:THR:HB	4:A:519:HOH:O	1.34	1.28
1:A:168[D]:THR:HB	4:A:519:HOH:O	1.34	1.28
1:A:182[C]:PHE:N	4:A:502:HOH:O	1.74	1.17
1:A:182[D]:PHE:N	4:A:502:HOH:O	1.74	1.17
1:A:168[C]:THR:CB	4:A:519:HOH:O	1.88	1.16
1:A:168[D]:THR:CB	4:A:519:HOH:O	1.88	1.16
1:A:220[C]:GLY:HA3	1:A:262[C]:GLN:HG2	1.28	1.14
1:A:220[D]:GLY:HA3	1:A:262[D]:GLN:HG2	1.28	1.14
1:A:168[C]:THR:CG2	4:A:519:HOH:O	1.94	1.13
1:A:168[D]:THR:CG2	4:A:519:HOH:O	1.94	1.13
1:A:75[C]:GLU:HG3	4:A:526:HOH:O	1.51	1.11
1:A:75[D]:GLU:HG3	4:A:526:HOH:O	1.51	1.11
1:A:100[C]:TRP:CZ3	1:A:169[C]:ARG:HD2	1.86	1.10
1:A:100[D]:TRP:CZ3	1:A:169[D]:ARG:HD2	1.86	1.10
1:A:220[C]:GLY:CA	1:A:262[C]:GLN:HG2	1.81	1.10
1:A:220[D]:GLY:CA	1:A:262[D]:GLN:HG2	1.81	1.10
1:A:100[C]:TRP:CZ3	1:A:169[C]:ARG:NE	2.20	1.09
1:A:100[D]:TRP:CZ3	1:A:169[D]:ARG:NE	2.20	1.09

*Continued on next page...*

*Continued from previous page...*

Atom-1	Atom-2	Interatomic distance (Å)	Clash overlap (Å)
1:A:100[C]:TRP:CZ3	1:A:169[C]:ARG:CD	2.35	1.09
1:A:100[D]:TRP:CZ3	1:A:169[D]:ARG:CD	2.35	1.09
1:A:141[C]:LYS:HE2	1:A:161[C]:GLU:OE1	1.49	1.08
1:A:141[D]:LYS:HE2	1:A:161[D]:GLU:OE1	1.49	1.08
1:A:100[C]:TRP:HZ3	1:A:169[C]:ARG:CD	1.68	1.07
1:A:100[D]:TRP:HZ3	1:A:169[D]:ARG:CD	1.68	1.07
1:A:128[C]:LYS:HG3	1:A:131[C]:LYS:HZ1	1.20	1.07
1:A:128[D]:LYS:HG3	1:A:131[D]:LYS:HZ1	1.20	1.07
1:A:50[C]:SER:HB2	1:A:51[C]:PRO:HD2	1.33	1.07
1:A:50[D]:SER:HB2	1:A:51[D]:PRO:HD2	1.33	1.07
1:A:116[C]:LYS:CE	1:A:181[C]:ASP:OD1	2.09	1.01
1:A:116[D]:LYS:CE	1:A:181[D]:ASP:OD1	2.09	1.01
1:A:141[C]:LYS:CE	1:A:161[C]:GLU:OE1	2.08	0.99
1:A:141[D]:LYS:CE	1:A:161[D]:GLU:OE1	2.08	0.99
1:A:100[C]:TRP:HZ3	1:A:169[C]:ARG:HD2	1.20	0.94
1:A:100[D]:TRP:HZ3	1:A:169[D]:ARG:HD2	1.20	0.94
1:A:100[C]:TRP:CH2	1:A:169[C]:ARG:NE	2.38	0.92
1:A:100[D]:TRP:CH2	1:A:169[D]:ARG:NE	2.38	0.92
1:A:157[C]:GLN:HE21	1:A:170[C]:GLU:CD	1.75	0.90
1:A:157[D]:GLN:HE21	1:A:170[D]:GLU:CD	1.75	0.90
1:A:72[C]:ILE:HD12	1:A:83:LEU:HD13	1.54	0.90
1:A:72[D]:ILE:HD12	1:A:83:LEU:HD13	1.54	0.90
1:A:287[C]:VAL:CG1	1:A:291[C]:TRP:CZ2	2.54	0.89
1:A:287[D]:VAL:CG1	1:A:291[D]:TRP:CZ2	2.54	0.89
1:A:181[C]:ASP:CA	4:A:502:HOH:O	2.20	0.88
1:A:181[D]:ASP:CA	4:A:502:HOH:O	2.20	0.88
1:A:207[C]:GLU:N	1:A:207[C]:GLU:OE1	2.06	0.87
1:A:207[D]:GLU:OE1	1:A:207[D]:GLU:N	2.06	0.87
1:A:181[C]:ASP:HA	4:A:502:HOH:O	1.75	0.86
1:A:181[D]:ASP:HA	4:A:502:HOH:O	1.75	0.86
1:A:284[C]:ASP:HB3	1:A:287[C]:VAL:HG23	1.55	0.86
1:A:284[D]:ASP:HB3	1:A:287[D]:VAL:HG23	1.55	0.86
1:A:50[C]:SER:HB2	1:A:51[C]:PRO:CD	2.06	0.85
1:A:50[D]:SER:HB2	1:A:51[D]:PRO:CD	2.06	0.85
1:A:128[C]:LYS:HG3	1:A:131[C]:LYS:NZ	1.92	0.85
1:A:128[D]:LYS:HG3	1:A:131[D]:LYS:NZ	1.92	0.85
1:A:220[C]:GLY:HA3	1:A:262[C]:GLN:CG	2.07	0.84
1:A:220[D]:GLY:HA3	1:A:262[D]:GLN:CG	2.07	0.84
1:A:128[C]:LYS:HD2	1:A:131[C]:LYS:NZ	1.93	0.83
1:A:128[D]:LYS:HD2	1:A:131[D]:LYS:NZ	1.93	0.83
1:A:198[C]:VAL:O	1:A:201[C]:SER:OG	1.96	0.82

*Continued on next page...*

*Continued from previous page...*

Atom-1	Atom-2	Interatomic distance (Å)	Clash overlap (Å)
1:A:198[D]:VAL:O	1:A:201[D]:SER:OG	1.96	0.82
1:A:131[C]:LYS:HB2	1:A:131[C]:LYS:HZ3	1.43	0.82
1:A:131[D]:LYS:HZ3	1:A:131[D]:LYS:HB2	1.43	0.82
1:A:4[C]:GLU:O	1:A:8[C]:GLU:CG	2.30	0.80
1:A:4[D]:GLU:O	1:A:8[D]:GLU:CG	2.30	0.80
1:A:24[C]:ARG:NH1	4:A:505:HOH:O	2.12	0.80
1:A:24[D]:ARG:NH1	4:A:505:HOH:O	2.12	0.80
1:A:100[C]:TRP:CZ3	1:A:169[C]:ARG:CZ	2.65	0.79
1:A:100[D]:TRP:CZ3	1:A:169[D]:ARG:CZ	2.65	0.79
1:A:128[C]:LYS:CG	1:A:131[C]:LYS:HZ1	1.94	0.79
1:A:128[D]:LYS:CG	1:A:131[D]:LYS:HZ1	1.94	0.79
1:A:287[C]:VAL:HG11	1:A:291[C]:TRP:CZ2	2.18	0.78
1:A:287[D]:VAL:HG11	1:A:291[D]:TRP:CZ2	2.18	0.78
1:A:124[A]:TYR:HH	1:A:214[A]:HIS:HE1	1.28	0.78
1:A:124[B]:TYR:HH	1:A:214[B]:HIS:HE1	1.28	0.78
1:A:116[C]:LYS:HE3	1:A:181[C]:ASP:OD1	1.82	0.78
1:A:116[D]:LYS:HE3	1:A:181[D]:ASP:OD1	1.82	0.78
1:A:116[C]:LYS:HD2	1:A:181[C]:ASP:OD1	1.84	0.78
1:A:116[D]:LYS:HD2	1:A:181[D]:ASP:OD1	1.84	0.78
1:A:92[C]:VAL:HG12	1:A:135[C]:PHE:CE1	2.21	0.76
1:A:92[D]:VAL:HG12	1:A:135[D]:PHE:CE1	2.21	0.76
1:A:34[C]:VAL:HG23	1:A:53[C]:ASP:OD1	1.85	0.76
1:A:34[D]:VAL:HG23	1:A:53[D]:ASP:OD1	1.85	0.76
1:A:116[C]:LYS:CD	1:A:181[C]:ASP:OD1	2.34	0.75
1:A:116[D]:LYS:CD	1:A:181[D]:ASP:OD1	2.34	0.75
1:A:128[C]:LYS:HD2	1:A:131[C]:LYS:HZ2	1.50	0.75
1:A:128[D]:LYS:HD2	1:A:131[D]:LYS:HZ2	1.50	0.75
1:A:157[C]:GLN:NE2	1:A:170[C]:GLU:OE1	2.19	0.75
1:A:157[D]:GLN:NE2	1:A:170[D]:GLU:OE1	2.19	0.75
1:A:116[C]:LYS:NZ	1:A:181[C]:ASP:OD1	2.19	0.74
1:A:116[D]:LYS:NZ	1:A:181[D]:ASP:OD1	2.19	0.74
1:A:37[C]:LEU:HB3	1:A:38[C]:PRO:CD	2.17	0.74
1:A:37[D]:LEU:HB3	1:A:38[D]:PRO:CD	2.17	0.74
1:A:45[C]:ARG:HB2	1:A:88[C]:LEU:HD21	1.69	0.74
1:A:45[D]:ARG:HB2	1:A:88[D]:LEU:HD21	1.69	0.74
1:A:220[C]:GLY:HA2	1:A:262[C]:GLN:HG2	1.70	0.74
1:A:220[D]:GLY:HA2	1:A:262[D]:GLN:HG2	1.70	0.74
1:A:57[C]:ILE:HD11	1:A:82[C]:ILE:HG12	1.67	0.73
1:A:57[D]:ILE:HD11	1:A:82[D]:ILE:HG12	1.67	0.73
1:A:37[C]:LEU:HB3	1:A:38[C]:PRO:HD2	1.71	0.73
1:A:37[D]:LEU:HB3	1:A:38[D]:PRO:HD2	1.71	0.73

*Continued on next page...*

*Continued from previous page...*

Atom-1	Atom-2	Interatomic distance (Å)	Clash overlap (Å)
1:A:1[C]:MET:CE	1:A:6[C]:GLU:HA	2.18	0.72
1:A:1[D]:MET:CE	1:A:6[D]:GLU:HA	2.18	0.72
1:A:245[C]:ASP:OD2	1:A:248[C]:LYS:HG3	1.89	0.72
1:A:245[D]:ASP:OD2	1:A:248[D]:LYS:HG3	1.89	0.72
1:A:4[C]:GLU:O	1:A:8[C]:GLU:HG2	1.88	0.72
1:A:4[D]:GLU:O	1:A:8[D]:GLU:HG2	1.88	0.72
1:A:46[C]:TYR:CD2	1:A:217[C]:ALA:HB2	2.25	0.71
1:A:46[D]:TYR:CD2	1:A:217[D]:ALA:HB2	2.25	0.71
1:A:100[C]:TRP:CH2	1:A:169[C]:ARG:CZ	2.73	0.71
1:A:100[D]:TRP:CH2	1:A:169[D]:ARG:CZ	2.73	0.71
1:A:128[C]:LYS:CD	1:A:131[C]:LYS:NZ	2.53	0.71
1:A:128[D]:LYS:CD	1:A:131[D]:LYS:NZ	2.53	0.71
1:A:141[C]:LYS:HE3	1:A:161[C]:GLU:OE1	1.91	0.70
1:A:141[D]:LYS:HE3	1:A:161[D]:GLU:OE1	1.91	0.70
1:A:128[C]:LYS:CG	1:A:131[C]:LYS:NZ	2.53	0.70
1:A:128[C]:LYS:CD	1:A:131[C]:LYS:HZ2	2.05	0.70
1:A:128[D]:LYS:CG	1:A:131[D]:LYS:NZ	2.53	0.70
1:A:128[D]:LYS:CD	1:A:131[D]:LYS:HZ2	2.05	0.70
1:A:4[C]:GLU:O	1:A:8[C]:GLU:HG3	1.90	0.70
1:A:4[D]:GLU:O	1:A:8[D]:GLU:HG3	1.90	0.70
1:A:2[A]:GLU:HG2	1:A:3[A]:MET:N	2.07	0.69
1:A:2[B]:GLU:HG2	1:A:3[B]:MET:N	2.07	0.69
1:A:1[C]:MET:HE1	1:A:6[C]:GLU:HA	1.73	0.69
1:A:1[D]:MET:HE1	1:A:6[D]:GLU:HA	1.73	0.69
1:A:124[A]:TYR:OH	1:A:214[A]:HIS:HE1	1.74	0.69
1:A:124[B]:TYR:OH	1:A:214[B]:HIS:HE1	1.74	0.69
1:A:119[C]:LEU:O	4:A:504:HOH:O	2.09	0.69
1:A:119[D]:LEU:O	4:A:504:HOH:O	2.09	0.69
1:A:196[C]:PHE:O	1:A:200[C]:GLU:HG3	1.94	0.67
1:A:196[D]:PHE:O	1:A:200[D]:GLU:HG3	1.94	0.67
1:A:24[A]:ARG:NH1	4:A:505:HOH:O	2.27	0.67
1:A:24[B]:ARG:NH1	4:A:505:HOH:O	2.27	0.67
1:A:92[C]:VAL:CG1	1:A:135[C]:PHE:CE1	2.77	0.67
1:A:92[D]:VAL:CG1	1:A:135[D]:PHE:CE1	2.77	0.67
1:A:2[C]:GLU:O	1:A:2[C]:GLU:HG3	1.94	0.66
1:A:2[D]:GLU:O	1:A:2[D]:GLU:HG3	1.94	0.66
1:A:112[C]:ARG:HH11	1:A:112[C]:ARG:CG	2.09	0.66
1:A:112[D]:ARG:HH11	1:A:112[D]:ARG:CG	2.09	0.66
1:A:187[C]:SER:HB2	1:A:188[C]:PRO:HD2	1.79	0.65
1:A:187[D]:SER:HB2	1:A:188[D]:PRO:HD2	1.79	0.65
1:A:115[C]:GLU:HG2	1:A:181[C]:ASP:OD2	1.95	0.65

*Continued on next page...*

*Continued from previous page...*

Atom-1	Atom-2	Interatomic distance (Å)	Clash overlap (Å)
1:A:115[D]:GLU:HG2	1:A:181[D]:ASP:OD2	1.95	0.65
1:A:2[A]:GLU:HG2	1:A:3[A]:MET:H	1.62	0.65
1:A:2[B]:GLU:HG2	1:A:3[B]:MET:H	1.62	0.65
1:A:88[C]:LEU:HB3	1:A:89[C]:PRO:HD2	1.77	0.65
1:A:88[D]:LEU:HB3	1:A:89[D]:PRO:HD2	1.77	0.65
1:A:153[B]:TYR:HE1	1:A:155[B]:VAL:CG2	2.09	0.65
1:A:61[C]:GLN:O	1:A:63[C]:ASP:N	2.31	0.63
1:A:61[D]:GLN:O	1:A:63[D]:ASP:N	2.31	0.63
1:A:45[C]:ARG:NH2	1:A:88[C]:LEU:HD23	2.15	0.61
1:A:45[D]:ARG:NH2	1:A:88[D]:LEU:HD23	2.15	0.61
1:A:112[C]:ARG:HH11	1:A:112[C]:ARG:HG3	1.66	0.60
1:A:112[D]:ARG:HH11	1:A:112[D]:ARG:HG3	1.66	0.60
1:A:168[C]:THR:HG22	4:A:519:HOH:O	1.71	0.60
1:A:168[D]:THR:HG22	4:A:519:HOH:O	1.71	0.60
1:A:287[C]:VAL:CG1	1:A:291[C]:TRP:CE2	2.84	0.60
1:A:287[D]:VAL:CG1	1:A:291[D]:TRP:CE2	2.84	0.60
1:A:105[C]:ARG:HH11	1:A:105[C]:ARG:HG2	1.67	0.60
1:A:105[D]:ARG:HG2	1:A:105[D]:ARG:HH11	1.67	0.60
1:A:30[C]:PHE:HB3	1:A:31[C]:PRO:HD2	1.82	0.60
1:A:30[D]:PHE:HB3	1:A:31[D]:PRO:HD2	1.82	0.60
1:A:124[C]:TYR:OH	1:A:173[C]:HIS:HE1	1.85	0.59
1:A:124[D]:TYR:OH	1:A:173[D]:HIS:HE1	1.85	0.59
1:A:112[C]:ARG:HG3	1:A:112[C]:ARG:NH1	2.17	0.59
1:A:112[D]:ARG:HG3	1:A:112[D]:ARG:NH1	2.17	0.59
1:A:241[C]:PRO:HG3	4:A:543:HOH:O	2.02	0.59
1:A:241[D]:PRO:HG3	4:A:543:HOH:O	2.02	0.59
1:A:31[C]:PRO:HD2	4:A:588:HOH:O	2.02	0.58
1:A:31[D]:PRO:HD2	4:A:588:HOH:O	2.02	0.58
1:A:45[C]:ARG:NH1	1:A:120[C]:LYS:O	2.37	0.58
1:A:45[D]:ARG:NH1	1:A:120[D]:LYS:O	2.37	0.58
1:A:83:LEU:HD11	1:A:226[B]:CYS:SG	2.44	0.57
1:A:30[C]:PHE:HB3	1:A:31[C]:PRO:CD	2.35	0.56
1:A:30[D]:PHE:HB3	1:A:31[D]:PRO:CD	2.35	0.56
1:A:111[C]:ASN:OD1	1:A:215[C]:CYS:HA	2.05	0.56
1:A:111[D]:ASN:OD1	1:A:215[D]:CYS:HA	2.05	0.56
1:A:48[C]:ASP:CB	2:A:401[C]:JGS:C01	2.84	0.56
1:A:48[D]:ASP:CB	2:A:401[D]:JGS:C01	2.84	0.56
1:A:112[C]:ARG:NE	1:A:115[C]:GLU:OE2	2.39	0.56
1:A:112[D]:ARG:NE	1:A:115[D]:GLU:OE2	2.39	0.56
1:A:153[B]:TYR:HE1	1:A:155[B]:VAL:HG23	1.69	0.56
1:A:240[C]:ASP:N	4:A:503:HOH:O	1.95	0.56

*Continued on next page...*

*Continued from previous page...*

Atom-1	Atom-2	Interatomic distance (Å)	Clash overlap (Å)
1:A:240[D]:ASP:N	4:A:503:HOH:O	1.95	0.56
1:A:139[C]:ASN:O	1:A:140[C]:LEU:HD12	2.06	0.55
1:A:139[D]:ASN:O	1:A:140[D]:LEU:HD12	2.06	0.55
1:A:197[C]:LYS:NZ	1:A:292[C]:LYS:NZ	2.55	0.55
1:A:197[D]:LYS:NZ	1:A:292[D]:LYS:NZ	2.55	0.55
1:A:182[C]:PHE:CZ	1:A:262[C]:GLN:OE1	2.60	0.54
1:A:182[D]:PHE:CZ	1:A:262[D]:GLN:OE1	2.60	0.54
1:A:163[A]:LEU:O	4:A:506:HOH:O	2.17	0.54
1:A:163[B]:LEU:O	4:A:506:HOH:O	2.17	0.54
1:A:180[C]:PRO:O	4:A:502:HOH:O	2.18	0.54
1:A:180[D]:PRO:O	4:A:502:HOH:O	2.18	0.54
1:A:2[C]:GLU:O	1:A:4[C]:GLU:N	2.40	0.54
1:A:2[D]:GLU:O	1:A:4[D]:GLU:N	2.40	0.54
1:A:92[C]:VAL:HG11	1:A:135[C]:PHE:HE1	1.72	0.54
1:A:92[D]:VAL:HG11	1:A:135[D]:PHE:HE1	1.72	0.54
1:A:48[C]:ASP:HB2	2:A:401[C]:JGS:C01	2.39	0.53
1:A:48[D]:ASP:HB2	2:A:401[D]:JGS:C01	2.39	0.53
1:A:100[C]:TRP:CE3	1:A:169[C]:ARG:HD2	2.41	0.53
1:A:100[D]:TRP:CE3	1:A:169[D]:ARG:HD2	2.41	0.53
1:A:157[C]:GLN:NE2	1:A:170[C]:GLU:OE2	2.40	0.53
1:A:157[D]:GLN:NE2	1:A:170[D]:GLU:OE2	2.40	0.53
1:A:141[C]:LYS:HE2	1:A:161[C]:GLU:CD	2.26	0.53
1:A:141[D]:LYS:HE2	1:A:161[D]:GLU:CD	2.26	0.53
1:A:280[C]:PHE:HD2	1:A:281[C]:ILE:HD12	1.74	0.53
1:A:280[D]:PHE:HD2	1:A:281[D]:ILE:HD12	1.74	0.53
1:A:140[C]:LEU:HA	1:A:161[C]:GLU:O	2.09	0.53
1:A:140[D]:LEU:HA	1:A:161[D]:GLU:O	2.09	0.53
1:A:59[C]:LEU:HD11	1:A:94[C]:HIS:HB3	1.92	0.52
1:A:59[D]:LEU:HD11	1:A:94[D]:HIS:HB3	1.92	0.52
1:A:169[C]:ARG:HB3	2:A:402[C]:JGS:N13	2.24	0.52
1:A:169[D]:ARG:HB3	2:A:402[D]:JGS:N13	2.24	0.52
1:A:92[C]:VAL:CG1	1:A:135[C]:PHE:HE1	2.19	0.51
1:A:92[D]:VAL:CG1	1:A:135[D]:PHE:HE1	2.19	0.51
1:A:48[C]:ASP:HB3	2:A:401[C]:JGS:C01	2.40	0.51
1:A:48[D]:ASP:HB3	2:A:401[D]:JGS:C01	2.40	0.51
1:A:153[B]:TYR:CE1	1:A:155[B]:VAL:HG23	2.44	0.51
1:A:280[C]:PHE:C	1:A:280[C]:PHE:CD2	2.84	0.51
1:A:280[D]:PHE:C	1:A:280[D]:PHE:CD2	2.84	0.51
1:A:287[C]:VAL:HG12	1:A:291[C]:TRP:CZ2	2.45	0.50
1:A:287[D]:VAL:HG12	1:A:291[D]:TRP:CZ2	2.45	0.50
1:A:92[A]:VAL:HG12	1:A:135[A]:PHE:CE1	2.47	0.50

*Continued on next page...*

*Continued from previous page...*

Atom-1	Atom-2	Interatomic distance (Å)	Clash overlap (Å)
1:A:92[B]:VAL:HG12	1:A:135[B]:PHE:CE1	2.47	0.50
1:A:175[C]:HIS:CD2	1:A:177[C]:THR:HG22	2.47	0.49
1:A:175[D]:HIS:CD2	1:A:177[D]:THR:HG22	2.47	0.49
1:A:124[A]:TYR:OH	1:A:173[A]:HIS:HE1	1.96	0.49
1:A:124[B]:TYR:OH	1:A:173[B]:HIS:HE1	1.96	0.49
1:A:147[C]:GLU:HG3	1:A:156[C]:ARG:HG2	1.95	0.48
1:A:147[D]:GLU:HG3	1:A:156[D]:ARG:HG2	1.95	0.48
1:A:6[A]:GLU:OE2	1:A:247[A]:LYS:HE3	2.14	0.48
1:A:6[B]:GLU:OE2	1:A:247[B]:LYS:HE3	2.14	0.48
1:A:7[C]:PHE:CZ	1:A:272[C]:LEU:HD21	2.47	0.48
1:A:7[D]:PHE:CZ	1:A:272[D]:LEU:HD21	2.47	0.48
1:A:45[C]:ARG:HH21	1:A:88[C]:LEU:HD23	1.77	0.48
1:A:45[D]:ARG:HH21	1:A:88[D]:LEU:HD23	1.77	0.48
1:A:286[C]:SER:C	1:A:290[C]:GLN:HE21	2.16	0.48
1:A:286[D]:SER:C	1:A:290[D]:GLN:HE21	2.16	0.48
1:A:131[C]:LYS:NZ	1:A:131[C]:LYS:HB2	2.22	0.48
1:A:131[D]:LYS:NZ	1:A:131[D]:LYS:HB2	2.22	0.48
1:A:139[C]:ASN:HB3	1:A:164[C]:THR:OG1	2.12	0.48
1:A:139[D]:ASN:HB3	1:A:164[D]:THR:OG1	2.12	0.48
1:A:156[A]:ARG:HH11	1:A:173[A]:HIS:HD2	1.62	0.48
1:A:156[B]:ARG:HH11	1:A:173[B]:HIS:HD2	1.62	0.48
1:A:284[C]:ASP:O	1:A:287[C]:VAL:HB	2.14	0.48
1:A:284[D]:ASP:O	1:A:287[D]:VAL:HB	2.14	0.48
1:A:3[A]:MET:HE1	1:A:274[A]:VAL:HG12	1.96	0.48
1:A:3[B]:MET:HE1	1:A:274[B]:VAL:HG12	1.96	0.48
1:A:162[C]:ASN:OD1	1:A:164[C]:THR:HB	2.14	0.47
1:A:162[D]:ASN:OD1	1:A:164[D]:THR:HB	2.14	0.47
1:A:179[C]:TRP:HE1	1:A:184[C]:VAL:HA	1.79	0.47
1:A:179[D]:TRP:HE1	1:A:184[D]:VAL:HA	1.79	0.47
1:A:27[C]:ALA:CB	1:A:254[C]:ARG:HD3	2.45	0.47
1:A:27[D]:ALA:CB	1:A:254[D]:ARG:HD3	2.45	0.47
1:A:105[C]:ARG:HH11	1:A:105[C]:ARG:CG	2.26	0.47
1:A:105[D]:ARG:HH11	1:A:105[D]:ARG:CG	2.26	0.47
1:A:168[C]:THR:C	4:A:519:HOH:O	2.50	0.47
1:A:168[D]:THR:C	4:A:519:HOH:O	2.50	0.47
1:A:44[C]:ASN:ND2	4:A:513:HOH:O	2.43	0.46
1:A:44[D]:ASN:ND2	4:A:513:HOH:O	2.43	0.46
1:A:25[C]:HIS:O	1:A:25[C]:HIS:CD2	2.69	0.46
1:A:25[D]:HIS:O	1:A:25[D]:HIS:CD2	2.69	0.46
1:A:50[C]:SER:CB	1:A:51[C]:PRO:CD	2.74	0.46
1:A:50[D]:SER:CB	1:A:51[D]:PRO:CD	2.74	0.46

*Continued on next page...*



*Continued from previous page...*

Atom-1	Atom-2	Interatomic distance (Å)	Clash overlap (Å)
1:A:245[C]:ASP:OD2	1:A:248[C]:LYS:CG	2.62	0.46
1:A:245[D]:ASP:OD2	1:A:248[D]:LYS:CG	2.62	0.46
1:A:284[C]:ASP:HB3	1:A:287[C]:VAL:CG2	2.38	0.46
1:A:284[D]:ASP:HB3	1:A:287[D]:VAL:CG2	2.38	0.46
1:A:1[C]:MET:HE2	1:A:6[C]:GLU:HA	1.96	0.45
1:A:1[D]:MET:HE2	1:A:6[D]:GLU:HA	1.96	0.45
1:A:179[C]:TRP:HZ3	1:A:191[C]:PHE:CE1	2.34	0.45
1:A:179[D]:TRP:HZ3	1:A:191[D]:PHE:CE1	2.34	0.45
1:A:72[C]:ILE:CD1	1:A:83:LEU:HD22	2.46	0.45
1:A:72[D]:ILE:CD1	1:A:83:LEU:HD22	2.46	0.45
1:A:57[C]:ILE:CD1	1:A:82[C]:ILE:HG12	2.40	0.45
1:A:57[D]:ILE:CD1	1:A:82[D]:ILE:HG12	2.40	0.45
1:A:124[A]:TYR:OH	1:A:214[A]:HIS:CE1	2.63	0.45
1:A:124[B]:TYR:OH	1:A:214[B]:HIS:CE1	2.63	0.45
1:A:232[C]:LEU:HA	1:A:232[C]:LEU:HD23	1.73	0.45
1:A:232[D]:LEU:HA	1:A:232[D]:LEU:HD23	1.73	0.45
1:A:112[C]:ARG:CD	1:A:115[C]:GLU:OE2	2.65	0.45
1:A:112[D]:ARG:CD	1:A:115[D]:GLU:OE2	2.65	0.45
1:A:128[C]:LYS:CD	1:A:131[C]:LYS:HZ1	2.25	0.45
1:A:128[D]:LYS:CD	1:A:131[D]:LYS:HZ1	2.25	0.45
1:A:205[C]:SER:HA	1:A:206[C]:PRO:HD3	1.72	0.45
1:A:205[D]:SER:HA	1:A:206[D]:PRO:HD3	1.72	0.45
1:A:23[C]:ILE:HD11	1:A:247[C]:LYS:HG2	1.99	0.45
1:A:23[D]:ILE:HD11	1:A:247[D]:LYS:HG2	1.99	0.45
1:A:280[C]:PHE:CD2	1:A:280[C]:PHE:O	2.70	0.45
1:A:280[D]:PHE:CD2	1:A:280[D]:PHE:O	2.70	0.45
1:A:169[C]:ARG:HA	2:A:402[C]:JGS:N13	2.31	0.44
1:A:169[D]:ARG:HA	2:A:402[D]:JGS:N13	2.31	0.44
1:A:84[C]:THR:HG22	1:A:214[C]:HIS:HB3	1.99	0.44
1:A:84[D]:THR:HG22	1:A:214[D]:HIS:HB3	1.99	0.44
1:A:169[C]:ARG:CB	2:A:402[C]:JGS:N13	2.81	0.44
1:A:169[D]:ARG:CB	2:A:402[D]:JGS:N13	2.81	0.44
1:A:75[C]:GLU:CG	4:A:526:HOH:O	2.31	0.44
1:A:75[D]:GLU:CG	4:A:526:HOH:O	2.31	0.44
1:A:165[C]:THR:O	1:A:166[C]:GLN:HB2	2.18	0.44
1:A:165[D]:THR:O	1:A:166[D]:GLN:HB2	2.18	0.44
1:A:25[C]:HIS:CD2	1:A:25[C]:HIS:C	2.91	0.44
1:A:25[D]:HIS:CD2	1:A:25[D]:HIS:C	2.91	0.44
1:A:74[C]:MET:HB2	1:A:79[C]:ARG:O	2.18	0.44
1:A:74[D]:MET:HB2	1:A:79[D]:ARG:O	2.18	0.44
1:A:45[A]:ARG:NH2	1:A:121[A]:CYS:HA	2.32	0.43

*Continued on next page...*



Continued from previous page...

Atom-1	Atom-2	Interatomic distance (Å)	Clash overlap (Å)
1:A:45[B]:ARG:NH2	1:A:121[B]:CYS:HA	2.32	0.43
1:A:134[C]:ILE:HG12	1:A:141[C]:LYS:HB2	2.00	0.43
1:A:134[D]:ILE:HG12	1:A:141[D]:LYS:HB2	2.00	0.43
1:A:46[C]:TYR:CE2	1:A:217[C]:ALA:HB2	2.54	0.43
1:A:46[D]:TYR:CE2	1:A:217[D]:ALA:HB2	2.54	0.43
1:A:83:LEU:HD11	1:A:226[C]:CYS:SG	2.58	0.43
1:A:83:LEU:HD11	1:A:226[D]:CYS:SG	2.58	0.43
1:A:197[C]:LYS:HZ1	1:A:292[C]:LYS:HZ3	1.65	0.43
1:A:197[D]:LYS:HZ1	1:A:292[D]:LYS:HZ3	1.65	0.43
1:A:77[C]:ALA:O	1:A:78[C]:GLN:HB2	2.19	0.43
1:A:77[D]:ALA:O	1:A:78[D]:GLN:HB2	2.19	0.43
1:A:280[C]:PHE:CE1	1:A:285[C]:SER:HA	2.54	0.43
1:A:280[D]:PHE:CE1	1:A:285[D]:SER:HA	2.54	0.43
1:A:287[C]:VAL:HG12	1:A:291[C]:TRP:CE2	2.54	0.43
1:A:287[D]:VAL:HG12	1:A:291[D]:TRP:CE2	2.54	0.43
1:A:10[C]:ILE:CG2	1:A:16[C]:TRP:CE2	3.02	0.42
1:A:10[C]:ILE:HG22	1:A:16[C]:TRP:CE2	2.55	0.42
1:A:10[D]:ILE:CG2	1:A:16[D]:TRP:CE2	3.02	0.42
1:A:10[D]:ILE:HG22	1:A:16[D]:TRP:CE2	2.55	0.42
1:A:179[C]:TRP:NE1	1:A:184[C]:VAL:HA	2.34	0.42
1:A:179[D]:TRP:NE1	1:A:184[D]:VAL:HA	2.34	0.42
1:A:112[C]:ARG:CZ	1:A:115[C]:GLU:OE1	2.68	0.42
1:A:112[D]:ARG:CZ	1:A:115[D]:GLU:OE1	2.68	0.42
1:A:181[C]:ASP:C	4:A:502:HOH:O	2.18	0.42
1:A:181[D]:ASP:C	4:A:502:HOH:O	2.18	0.42
1:A:33[C]:ARG:NH1	4:A:525:HOH:O	2.51	0.42
1:A:33[D]:ARG:NH1	4:A:525:HOH:O	2.51	0.42
1:A:160[C]:LEU:HA	1:A:160[C]:LEU:HD12	1.72	0.42
1:A:160[D]:LEU:HA	1:A:160[D]:LEU:HD12	1.72	0.42
1:A:197[C]:LYS:NZ	1:A:292[C]:LYS:HZ2	2.17	0.42
1:A:197[D]:LYS:NZ	1:A:292[D]:LYS:HZ2	2.17	0.42
1:A:2[A]:GLU:CG	1:A:3[A]:MET:N	2.80	0.42
1:A:2[B]:GLU:CG	1:A:3[B]:MET:N	2.80	0.42
1:A:120[C]:LYS:HD3	1:A:120[C]:LYS:HA	1.79	0.42
1:A:120[D]:LYS:HD3	1:A:120[D]:LYS:HA	1.79	0.42
1:A:124[C]:TYR:HH	1:A:214[C]:HIS:HE1	1.68	0.42
1:A:124[D]:TYR:HH	1:A:214[D]:HIS:HE1	1.68	0.42
1:A:59[C]:LEU:HB2	1:A:65[C]:ASP:HA	2.02	0.41
1:A:59[D]:LEU:HB2	1:A:65[D]:ASP:HA	2.02	0.41
1:A:163[C]:LEU:HA	1:A:163[C]:LEU:HD23	1.67	0.41
1:A:163[D]:LEU:HA	1:A:163[D]:LEU:HD23	1.67	0.41

Continued on next page...

Continued from previous page...

Atom-1	Atom-2	Interatomic distance (Å)	Clash overlap (Å)
1:A:231[C]:CYS:HA	1:A:234[C]:LEU:HD12	2.01	0.41
1:A:231[D]:CYS:HA	1:A:234[D]:LEU:HD12	2.01	0.41
1:A:153[B]:TYR:CE1	1:A:155[B]:VAL:CG2	2.98	0.41
1:A:10[C]:ILE:HG22	1:A:16[C]:TRP:NE1	2.36	0.41
1:A:10[D]:ILE:HG22	1:A:16[D]:TRP:NE1	2.36	0.41
1:A:39[C]:LYS:NZ	4:A:514:HOH:O	2.44	0.41
1:A:39[D]:LYS:NZ	4:A:514:HOH:O	2.44	0.41
1:A:84[C]:THR:O	1:A:214[C]:HIS:HB2	2.21	0.40
1:A:84[D]:THR:O	1:A:214[D]:HIS:HB2	2.21	0.40
1:A:2[A]:GLU:CG	1:A:3[A]:MET:H	2.32	0.40
1:A:2[B]:GLU:CG	1:A:3[B]:MET:H	2.32	0.40
1:A:45[C]:ARG:CZ	1:A:88[C]:LEU:HD23	2.50	0.40
1:A:45[D]:ARG:CZ	1:A:88[D]:LEU:HD23	2.50	0.40
1:A:187[C]:SER:HB2	1:A:188[C]:PRO:CD	2.49	0.40
1:A:187[D]:SER:HB2	1:A:188[D]:PRO:CD	2.49	0.40
1:A:20[C]:TYR:OH	1:A:261[C]:ILE:O	2.23	0.40
1:A:20[D]:TYR:OH	1:A:261[D]:ILE:O	2.23	0.40

All (2) symmetry-related close contacts are listed below. The label for Atom-2 includes the symmetry operator and encoded unit-cell translations to be applied.

Atom-1	Atom-2	Interatomic distance (Å)	Clash overlap (Å)
4:A:606:HOH:O	4:A:639:HOH:O[2_565]	1.82	0.38
4:A:568:HOH:O	4:A:645:HOH:O[2_565]	1.97	0.23

## 5.3 Torsion angles [i](#)

### 5.3.1 Protein backbone [i](#)

In the following table, the Percentiles column shows the percent Ramachandran outliers of the chain as a percentile score with respect to all X-ray entries followed by that with respect to entries of similar resolution.

The Analysed column shows the number of residues for which the backbone conformation was analysed, and the total number of residues.

Mol	Chain	Analysed	Favoured	Allowed	Outliers	Percentiles
1	A	1074/321 (335%)	966 (90%)	80 (7%)	28 (3%)	<b>5</b> <b>1</b>

All (28) Ramachandran outliers are listed below:

Mol	Chain	Res	Type
1	A	3[A]	MET
1	A	3[B]	MET
1	A	3[C]	MET
1	A	3[D]	MET
1	A	62[A]	GLU
1	A	62[B]	GLU
1	A	62[C]	GLU
1	A	62[D]	GLU
1	A	166[A]	GLN
1	A	166[B]	GLN
1	A	166[C]	GLN
1	A	166[D]	GLN
1	A	184[A]	VAL
1	A	184[B]	VAL
1	A	184[C]	VAL
1	A	184[D]	VAL
1	A	185[A]	PRO
1	A	185[B]	PRO
1	A	185[C]	PRO
1	A	185[D]	PRO
1	A	186[A]	GLU
1	A	186[B]	GLU
1	A	186[C]	GLU
1	A	186[D]	GLU
1	A	261[A]	ILE
1	A	261[B]	ILE
1	A	261[C]	ILE
1	A	261[D]	ILE

### 5.3.2 Protein sidechains [i](#)

In the following table, the Percentiles column shows the percent sidechain outliers of the chain as a percentile score with respect to all X-ray entries followed by that with respect to entries of similar resolution.

The Analysed column shows the number of residues for which the sidechain conformation was analysed, and the total number of residues.

Mol	Chain	Analysed	Rotameric	Outliers	Percentiles
1	A	995/294 (338%)	961 (97%)	34 (3%)	37 25

All (34) residues with a non-rotameric sidechain are listed below:

Mol	Chain	Res	Type
1	A	61[A]	GLN
1	A	61[B]	GLN
1	A	61[C]	GLN
1	A	61[D]	GLN
1	A	72[A]	ILE
1	A	72[B]	ILE
1	A	72[C]	ILE
1	A	72[D]	ILE
1	A	79[A]	ARG
1	A	79[B]	ARG
1	A	79[C]	ARG
1	A	79[D]	ARG
1	A	121[A]	CYS
1	A	121[B]	CYS
1	A	121[C]	CYS
1	A	121[D]	CYS
1	A	265[A]	ASP
1	A	265[B]	ASP
1	A	265[C]	ASP
1	A	265[D]	ASP
1	A	281[A]	ILE
1	A	281[B]	ILE
1	A	281[C]	ILE
1	A	281[D]	ILE
1	A	284[C]	ASP
1	A	284[D]	ASP
1	A	285[C]	SER
1	A	285[D]	SER
1	A	286[C]	SER
1	A	286[D]	SER
1	A	292[C]	LYS
1	A	292[D]	LYS
1	A	294[C]	LEU
1	A	294[D]	LEU

Sometimes sidechains can be flipped to improve hydrogen bonding and reduce clashes. There are no such sidechains identified.

### 5.3.3 RNA ⓘ

There are no RNA molecules in this entry.

## 5.4 Non-standard residues in protein, DNA, RNA chains [i](#)

There are no non-standard protein/DNA/RNA residues in this entry.

## 5.5 Carbohydrates [i](#)

There are no monosaccharides in this entry.

## 5.6 Ligand geometry [i](#)

5 ligands are modelled in this entry.

In the following table, the Counts columns list the number of bonds (or angles) for which Mogul statistics could be retrieved, the number of bonds (or angles) that are observed in the model and the number of bonds (or angles) that are defined in the Chemical Component Dictionary. The Link column lists molecule types, if any, to which the group is linked. The Z score for a bond length (or angle) is the number of standard deviations the observed value is removed from the expected value. A bond length (or angle) with  $|Z| > 2$  is considered an outlier worth inspection. RMSZ is the root-mean-square of all Z scores of the bond lengths (or angles).

Mol	Type	Chain	Res	Link	Bond lengths			Bond angles		
					Counts	RMSZ	# Z  > 2	Counts	RMSZ	# Z  > 2
2	JGS	A	401[C]	-	15,18,18	2.47	6 (40%)	17,24,24	1.55	4 (23%)
3	TRS	A	403	-	7,7,7	0.59	0	9,9,9	0.80	1 (11%)
2	JGS	A	402[C]	-	15,18,18	1.72	2 (13%)	17,24,24	1.58	2 (11%)
2	JGS	A	402[D]	-	15,18,18	1.72	2 (13%)	17,24,24	1.58	2 (11%)
2	JGS	A	401[D]	-	15,18,18	2.47	6 (40%)	17,24,24	1.55	4 (23%)

In the following table, the Chirals column lists the number of chiral outliers, the number of chiral centers analysed, the number of these observed in the model and the number defined in the Chemical Component Dictionary. Similar counts are reported in the Torsion and Rings columns. '-' means no outliers of that kind were identified.

Mol	Type	Chain	Res	Link	Chirals	Torsions	Rings
2	JGS	A	401[C]	-	-	0/9/12/12	0/2/2/2
3	TRS	A	403	-	-	3/9/9/9	-
2	JGS	A	402[C]	-	-	5/9/12/12	0/2/2/2
2	JGS	A	402[D]	-	-	5/9/12/12	0/2/2/2
2	JGS	A	401[D]	-	-	0/9/12/12	0/2/2/2

All (16) bond length outliers are listed below:

Mol	Chain	Res	Type	Atoms	Z	Observed(Å)	Ideal(Å)
2	A	401[C]	JGS	C10-C08	5.36	1.57	1.49
2	A	401[D]	JGS	C10-C08	5.36	1.57	1.49
2	A	402[C]	JGS	C11-C12	5.34	1.45	1.38
2	A	402[D]	JGS	C11-C12	5.34	1.45	1.38
2	A	401[C]	JGS	C04-C03	-4.49	1.32	1.39
2	A	401[D]	JGS	C04-C03	-4.49	1.32	1.39
2	A	401[C]	JGS	O16-C15	-3.53	1.19	1.30
2	A	401[D]	JGS	O16-C15	-3.53	1.19	1.30
2	A	401[C]	JGS	C11-C12	3.30	1.42	1.38
2	A	401[D]	JGS	C11-C12	3.30	1.42	1.38
2	A	401[C]	JGS	C05-N07	2.43	1.46	1.41
2	A	401[D]	JGS	C05-N07	2.43	1.46	1.41
2	A	402[C]	JGS	C03-C15	2.20	1.54	1.49
2	A	402[D]	JGS	C03-C15	2.20	1.54	1.49
2	A	401[C]	JGS	C12-N13	-2.13	1.26	1.32
2	A	401[D]	JGS	C12-N13	-2.13	1.26	1.32

All (13) bond angle outliers are listed below:

Mol	Chain	Res	Type	Atoms	Z	Observed(°)	Ideal(°)
2	A	402[C]	JGS	C10-C08-N07	4.84	121.33	113.89
2	A	402[D]	JGS	C10-C08-N07	4.84	121.33	113.89
2	A	401[C]	JGS	C10-C08-N07	3.14	118.72	113.89
2	A	401[D]	JGS	C10-C08-N07	3.14	118.72	113.89
2	A	402[C]	JGS	O09-C08-C10	-2.92	114.72	121.08
2	A	402[D]	JGS	O09-C08-C10	-2.92	114.72	121.08
2	A	401[C]	JGS	C03-C04-C05	2.84	124.27	120.44
2	A	401[D]	JGS	C03-C04-C05	2.84	124.27	120.44
2	A	401[C]	JGS	C05-N07-C08	2.81	133.88	126.58
2	A	401[D]	JGS	C05-N07-C08	2.81	133.88	126.58
2	A	401[C]	JGS	C06-C05-C04	-2.22	117.02	119.65
2	A	401[D]	JGS	C06-C05-C04	-2.22	117.02	119.65
3	A	403	TRS	O3-C3-C	-2.04	104.52	111.00

There are no chirality outliers.

All (13) torsion outliers are listed below:

Mol	Chain	Res	Type	Atoms
2	A	402[C]	JGS	O09-C08-C10-C11
2	A	402[D]	JGS	O09-C08-C10-C11
3	A	403	TRS	C2-C-C1-O1
3	A	403	TRS	C3-C-C1-O1

*Continued on next page...*

Continued from previous page...

Mol	Chain	Res	Type	Atoms
3	A	403	TRS	N-C-C1-O1
2	A	402[C]	JGS	C04-C03-C15-O16
2	A	402[C]	JGS	C02-C03-C15-O17
2	A	402[C]	JGS	C04-C03-C15-O17
2	A	402[D]	JGS	C04-C03-C15-O16
2	A	402[D]	JGS	C02-C03-C15-O17
2	A	402[D]	JGS	C04-C03-C15-O17
2	A	402[C]	JGS	C02-C03-C15-O16
2	A	402[D]	JGS	C02-C03-C15-O16

There are no ring outliers.

4 monomers are involved in 12 short contacts:

Mol	Chain	Res	Type	Clashes	Symm-Clashes
2	A	401[C]	JGS	3	0
2	A	402[C]	JGS	3	0
2	A	402[D]	JGS	3	0
2	A	401[D]	JGS	3	0

## 5.7 Other polymers [i](#)

There are no such residues in this entry.

## 5.8 Polymer linkage issues [i](#)

The following chains have linkage breaks:

Mol	Chain	Number of breaks
1	A	10

All chain breaks are listed below:

Model	Chain	Residue-1	Atom-1	Residue-2	Atom-2	Distance (Å)
1	A	86:GLY	C	87[C]:PRO	N	1.18
1	A	86:GLY	C	87[D]:PRO	N	1.18
1	A	108[C]:VAL	C	109:MET	N	1.17
1	A	108[D]:VAL	C	109:MET	N	1.17
1	A	95[C]:PHE	C	96:TRP	N	1.16
1	A	95[D]:PHE	C	96:TRP	N	1.16
1	A	227[C]:LEU	C	228:ALA	N	1.16

Continued on next page...

*Continued from previous page...*

Model	Chain	Residue-1	Atom-1	Residue-2	Atom-2	Distance (Å)
1	A	227[D]:LEU	C	228:ALA	N	1.16
1	A	256[C]:PHE	C	257:ARG	N	1.15
1	A	256[D]:PHE	C	257:ARG	N	1.15



## 6 Fit of model and data

### 6.1 Protein, DNA and RNA chains

In the following table, the column labelled ‘#RSRZ> 2’ contains the number (and percentage) of RSRZ outliers, followed by percent RSRZ outliers for the chain as percentile scores relative to all X-ray entries and entries of similar resolution. The OWAB column contains the minimum, median, 95<sup>th</sup> percentile and maximum values of the occupancy-weighted average B-factor per residue. The column labelled ‘Q< 0.9’ lists the number of (and percentage) of residues with an average occupancy less than 0.9.

Mol	Chain	Analysed	<RSRZ>	#RSRZ>2	OWAB(Å <sup>2</sup> )	Q<0.9
1	A	294/321 (91%)	0.75	32 (10%) <b>5</b> <b>6</b>	22, 37, 65, 88	12 (4%)

All (32) RSRZ outliers are listed below:

Mol	Chain	Res	Type	RSRZ
1	A	287[C]	VAL	11.2
1	A	1[A]	MET	9.6
1	A	286[C]	SER	6.8
1	A	291[C]	TRP	6.6
1	A	284[C]	ASP	6.0
1	A	280[A]	PHE	5.8
1	A	282[A]	MET	5.3
1	A	288[C]	GLN	4.8
1	A	182[A]	PHE	4.4
1	A	63[A]	ASP	4.2
1	A	289[C]	ASP	4.2
1	A	62[A]	GLU	4.0
1	A	285[C]	SER	3.9
1	A	152[A]	TYR	3.8
1	A	12[A]	LYS	3.7
1	A	294[C]	LEU	3.7
1	A	293[C]	GLU	3.7
1	A	281[A]	ILE	3.7
1	A	181[A]	ASP	3.5
1	A	165[A]	THR	3.1
1	A	2[A]	GLU	2.9
1	A	5[A]	LYS	2.7
1	A	9[A]	GLN	2.7
1	A	183[A]	GLY	2.7
1	A	18[A]	ALA	2.5
1	A	167[A]	GLU	2.5
1	A	47[A]	ARG	2.3

*Continued on next page...*

*Continued from previous page...*

Mol	Chain	Res	Type	RSRZ
1	A	279[A]	LYS	2.2
1	A	25[A]	HIS	2.1
1	A	7[A]	PHE	2.1
1	A	61[A]	GLN	2.0
1	A	186[A]	GLU	2.0

## 6.2 Non-standard residues in protein, DNA, RNA chains [i](#)

There are no non-standard protein/DNA/RNA residues in this entry.

## 6.3 Carbohydrates [i](#)

There are no monosaccharides in this entry.

## 6.4 Ligands [i](#)

In the following table, the Atoms column lists the number of modelled atoms in the group and the number defined in the chemical component dictionary. The B-factors column lists the minimum, median, 95<sup>th</sup> percentile and maximum values of B factors of atoms in the group. The column labelled 'Q< 0.9' lists the number of atoms with occupancy less than 0.9.

Mol	Type	Chain	Res	Atoms	RSCC	RSR	B-factors(Å <sup>2</sup> )	Q<0.9
2	JGS	A	402[C]	17/17	0.28	0.76	33,72,97,104	24
2	JGS	A	402[D]	17/17	0.28	0.76	33,72,97,104	24
2	JGS	A	401[C]	17/17	0.55	0.48	25,61,88,105	24
2	JGS	A	401[D]	17/17	0.55	0.48	25,61,88,105	24
3	TRS	A	403	8/8	0.86	0.14	31,73,120,120	0

## 6.5 Other polymers [i](#)

There are no such residues in this entry.