



# Full wwPDB X-ray Structure Validation Report ⓘ

Jun 17, 2024 – 12:58 AM EDT

PDB ID : 5PX8  
Title : PanDDA analysis group deposition – Crystal Structure of SP100 after initial refinement with no ligand modelled (structure 32)  
Authors : Pearce, N.M.; Krojer, T.; Talon, R.; Bradley, A.R.; Fairhead, M.; Sethi, R.; Wright, N.; MacLean, E.; Collins, P.; Brandao-Neto, J.; Douangamath, A.; Renjie, Z.; Dias, A.; Ng, J.; Brennan, P.E.; Cox, O.; Bountra, C.; Arrowsmith, C.H.; Edwards, A.; von Delft, F.  
Deposited on : 2017-02-08  
Resolution : 1.71 Å(reported)

This is a Full wwPDB X-ray Structure Validation Report for a publicly released PDB entry.

We welcome your comments at [validation@mail.wwpdb.org](mailto:validation@mail.wwpdb.org)

A user guide is available at

<https://www.wwpdb.org/validation/2017/XrayValidationReportHelp>

with specific help available everywhere you see the ⓘ symbol.

The types of validation reports are described at

<http://www.wwpdb.org/validation/2017/FAQs#types>.

---

The following versions of software and data (see [references ⓘ](#)) were used in the production of this report:

MolProbity : 4.02b-467  
Mogul : 1.8.5 (274361), CSD as541be (2020)  
Xtriage (Phenix) : 1.13  
EDS : 2.37.1  
Percentile statistics : 20191225.v01 (using entries in the PDB archive December 25th 2019)  
Refmac : 5.8.0158  
CCP4 : 7.0.044 (Gargrove)  
Ideal geometry (proteins) : Engh & Huber (2001)  
Ideal geometry (DNA, RNA) : Parkinson et al. (1996)

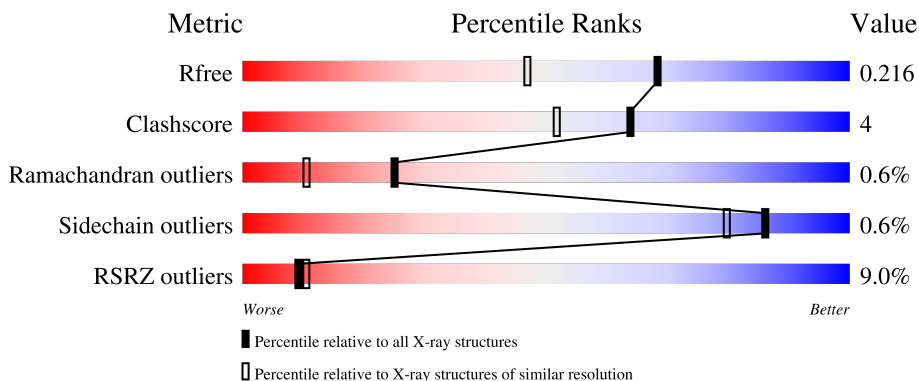
# 1 Overall quality at a glance

The following experimental techniques were used to determine the structure:

*X-RAY DIFFRACTION*

The reported resolution of this entry is 1.71 Å.

Percentile scores (ranging between 0-100) for global validation metrics of the entry are shown in the following graphic. The table shows the number of entries on which the scores are based.



Metric	Whole archive (#Entries)	Similar resolution (#Entries, resolution range(Å))
$R_{free}$	130704	5722 (1.74-1.70)
Clashscore	141614	6152 (1.74-1.70)
Ramachandran outliers	138981	6051 (1.74-1.70)
Sidechain outliers	138945	6051 (1.74-1.70)
RSRZ outliers	127900	5629 (1.74-1.70)

The table below summarises the geometric issues observed across the polymeric chains and their fit to the electron density. The red, orange, yellow and green segments of the lower bar indicate the fraction of residues that contain outliers for  $\geq 3$ , 2, 1 and 0 types of geometric quality criteria respectively. A grey segment represents the fraction of residues that are not modelled. The numeric value for each fraction is indicated below the corresponding segment, with a dot representing fractions  $\leq 5\%$ . The upper red bar (where present) indicates the fraction of residues that have poor fit to the electron density. The numeric value is given above the bar.

Mol	Chain	Length	Quality of chain
1	A	180	 6% 93% 6% .
1	B	180	 12% 88% 9% ..

## 2 Entry composition [i](#)

There are 5 unique types of molecules in this entry. The entry contains 3620 atoms, of which 0 are hydrogens and 0 are deuteriums.

In the tables below, the ZeroOcc column contains the number of atoms modelled with zero occupancy, the AltConf column contains the number of residues with at least one atom in alternate conformation and the Trace column contains the number of residues modelled with at most 2 atoms.

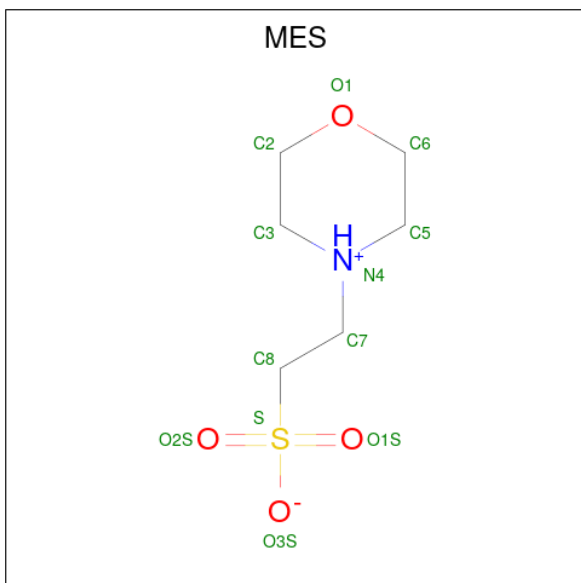
- Molecule 1 is a protein called Nuclear autoantigen Sp-100.

Mol	Chain	Residues	Atoms					ZeroOcc	AltConf	Trace
			Total	C	N	O	S			
1	A	178	Total 1536	C 971	N 268	O 278	S 19	0	10	0
1	B	177	Total 1480	C 940	N 258	O 263	S 19	0	7	0

- Molecule 2 is ZINC ION (three-letter code: ZN) (formula: Zn).

Mol	Chain	Residues	Atoms		ZeroOcc	AltConf
			Total	Zn		
2	A	3	Total 3	Zn 3	0	0
2	B	2	Total 2	Zn 2	0	0

- Molecule 3 is 2-(N-MORPHOLINO)-ETHANESULFONIC ACID (three-letter code: MES) (formula: C<sub>6</sub>H<sub>13</sub>NO<sub>4</sub>S).



Mol	Chain	Residues	Atoms					ZeroOcc	AltConf
			Total	C	N	O	S		
3	A	1	12	6	1	4	1	0	0

- Molecule 4 is 1,2-ETHANEDIOL (three-letter code: EDO) (formula: C<sub>2</sub>H<sub>6</sub>O<sub>2</sub>).



Mol	Chain	Residues	Atoms			ZeroOcc	AltConf
			Total	C	O		
4	A	1	4	2	2	0	0
4	B	1	4	2	2	0	0

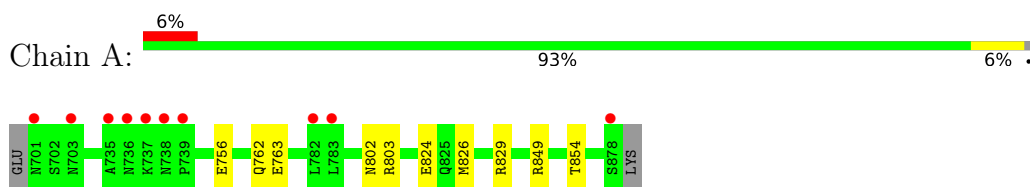
- Molecule 5 is water.

Mol	Chain	Residues	Atoms		ZeroOcc	AltConf
			Total	O		
5	A	314	314	314	0	3
5	B	265	265	265	0	0

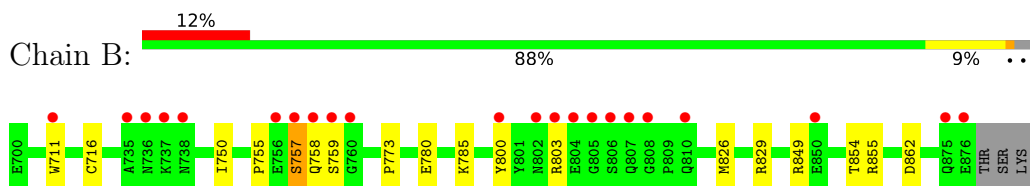
### 3 Residue-property plots [i](#)

These plots are drawn for all protein, RNA, DNA and oligosaccharide chains in the entry. The first graphic for a chain summarises the proportions of the various outlier classes displayed in the second graphic. The second graphic shows the sequence view annotated by issues in geometry and electron density. Residues are color-coded according to the number of geometric quality criteria for which they contain at least one outlier: green = 0, yellow = 1, orange = 2 and red = 3 or more. A red dot above a residue indicates a poor fit to the electron density ( $RSRZ > 2$ ). Stretches of 2 or more consecutive residues without any outlier are shown as a green connector. Residues present in the sample, but not in the model, are shown in grey.

- Molecule 1: Nuclear autoantigen Sp-100



- Molecule 1: Nuclear autoantigen Sp-100



## 4 Data and refinement statistics

Property	Value	Source
Space group	C 1 2 1	Depositor
Cell constants a, b, c, $\alpha$ , $\beta$ , $\gamma$	127.56Å 45.27Å 83.20Å 90.00° 102.48° 90.00°	Depositor
Resolution (Å)	28.35 – 1.71 28.35 – 1.71	Depositor EDS
% Data completeness (in resolution range)	98.2 (28.35-1.71) 98.3 (28.35-1.71)	Depositor EDS
$R_{merge}$	0.07	Depositor
$R_{sym}$	(Not available)	Depositor
$\langle I/\sigma(I) \rangle$ <sup>1</sup>	1.65 (at 1.71Å)	Xtrriage
Refinement program	REFMAC 5.8.0135	Depositor
R, $R_{free}$	0.169 , 0.208 0.179 , 0.216	Depositor DCC
$R_{free}$ test set	2470 reflections (4.96%)	wwPDB-VP
Wilson B-factor (Å <sup>2</sup> )	20.9	Xtrriage
Anisotropy	0.046	Xtrriage
Bulk solvent $k_{sol}$ (e/Å <sup>3</sup> ), $B_{sol}$ (Å <sup>2</sup> )	0.32 , 52.7	EDS
L-test for twinning <sup>2</sup>	$\langle  L  \rangle = 0.49$ , $\langle L^2 \rangle = 0.32$	Xtrriage
Estimated twinning fraction	No twinning to report.	Xtrriage
$F_o, F_c$ correlation	0.96	EDS
Total number of atoms	3620	wwPDB-VP
Average B, all atoms (Å <sup>2</sup> )	30.0	wwPDB-VP

Xtrriage's analysis on translational NCS is as follows: *The largest off-origin peak in the Patterson function is 6.52% of the height of the origin peak. No significant pseudotranslation is detected.*

<sup>1</sup>Intensities estimated from amplitudes.

<sup>2</sup>Theoretical values of  $\langle |L| \rangle$ ,  $\langle L^2 \rangle$  for acentric reflections are 0.5, 0.333 respectively for untwinned datasets, and 0.375, 0.2 for perfectly twinned datasets.

## 5 Model quality [i](#)

### 5.1 Standard geometry [i](#)

Bond lengths and bond angles in the following residue types are not validated in this section: MES, ZN, EDO

The Z score for a bond length (or angle) is the number of standard deviations the observed value is removed from the expected value. A bond length (or angle) with  $|Z| > 5$  is considered an outlier worth inspection. RMSZ is the root-mean-square of all Z scores of the bond lengths (or angles).

Mol	Chain	Bond lengths		Bond angles	
		RMSZ	# $ Z  > 5$	RMSZ	# $ Z  > 5$
1	A	1.02	1/1603 (0.1%)	0.91	0/2154
1	B	1.03	1/1538 (0.1%)	0.94	4/2071 (0.2%)
All	All	1.03	2/3141 (0.1%)	0.92	4/4225 (0.1%)

Chiral center outliers are detected by calculating the chiral volume of a chiral center and verifying if the center is modelled as a planar moiety or with the opposite hand. A planarity outlier is detected by checking planarity of atoms in a peptide group, atoms in a mainchain group or atoms of a sidechain that are expected to be planar.

Mol	Chain	#Chirality outliers	#Planarity outliers
1	B	0	1

All (2) bond length outliers are listed below:

Mol	Chain	Res	Type	Atoms	Z	Observed(Å)	Ideal(Å)
1	A	763	GLU	CD-OE1	-7.35	1.17	1.25
1	B	780	GLU	CD-OE2	5.04	1.31	1.25

All (4) bond angle outliers are listed below:

Mol	Chain	Res	Type	Atoms	Z	Observed(°)	Ideal(°)
1	B	855	ARG	NE-CZ-NH1	6.43	123.52	120.30
1	B	855	ARG	NE-CZ-NH2	-5.60	117.50	120.30
1	B	829[A]	ARG	NE-CZ-NH2	-5.41	117.59	120.30
1	B	829[B]	ARG	NE-CZ-NH2	-5.41	117.59	120.30

There are no chirality outliers.

All (1) planarity outliers are listed below:

Mol	Chain	Res	Type	Group
1	B	755	PRO	Peptide

## 5.2 Too-close contacts [i](#)

In the following table, the Non-H and H(model) columns list the number of non-hydrogen atoms and hydrogen atoms in the chain respectively. The H(added) column lists the number of hydrogen atoms added and optimized by MolProbity. The Clashes column lists the number of clashes within the asymmetric unit, whereas Symm-Clashes lists symmetry-related clashes.

Mol	Chain	Non-H	H(model)	H(added)	Clashes	Symm-Clashes
1	A	1536	0	1497	9	0
1	B	1480	0	1414	12	0
2	A	3	0	0	0	0
2	B	2	0	0	0	0
3	A	12	0	12	2	0
4	A	4	0	6	2	0
4	B	4	0	6	1	0
5	A	314	0	0	9	2
5	B	265	0	0	6	4
All	All	3620	0	2935	25	5

The all-atom clashscore is defined as the number of clashes found per 1000 atoms (including hydrogen atoms). The all-atom clashscore for this structure is 4.

All (25) close contacts within the same asymmetric unit are listed below, sorted by their clash magnitude.

Atom-1	Atom-2	Interatomic distance (Å)	Clash overlap (Å)
4:B:903:EDO:O2	5:B:1001:HOH:O	1.53	1.25
1:A:803[A]:ARG:NH2	5:A:1001:HOH:O	1.88	1.06
1:A:829[A]:ARG:NH1	5:A:1002:HOH:O	1.95	0.98
1:A:803[B]:ARG:NH1	5:A:1003:HOH:O	2.07	0.87
3:A:904:MES:H81	5:A:1229:HOH:O	1.75	0.84
1:B:826[B]:MET:SD	5:B:1046:HOH:O	2.48	0.71
1:A:756:GLU:HG3	5:A:1090:HOH:O	1.94	0.67
1:B:826[B]:MET:HE2	5:B:1195:HOH:O	1.95	0.65
1:B:716[A]:CYS:SG	5:B:1129:HOH:O	2.55	0.64
1:B:750:ILE:HD11	5:B:1001:HOH:O	1.98	0.63
1:B:849:ARG:O	1:B:854[B]:THR:HG21	2.00	0.61
1:A:802:ASN:O	3:A:904:MES:H32	2.04	0.58
4:A:905:EDO:C2	5:A:1062:HOH:O	2.54	0.56
5:A:1001:HOH:O	1:B:773:PRO:HG2	2.07	0.55

*Continued on next page...*



Continued from previous page...

Atom-1	Atom-2	Interatomic distance (Å)	Clash overlap (Å)
1:A:762:GLN:NE2	5:A:1011:HOH:O	2.40	0.54
1:B:800:TYR:HE1	1:B:803:ARG:CB	2.22	0.52
1:A:824:GLU:HB2	1:A:826[B]:MET:HE2	1.90	0.52
4:A:905:EDO:H21	5:A:1062:HOH:O	2.09	0.50
1:A:849:ARG:O	1:A:854[B]:THR:HG21	2.13	0.49
1:B:800:TYR:CE1	1:B:803:ARG:CB	2.95	0.49
1:B:785:LYS:HE3	5:B:1225:HOH:O	2.15	0.47
1:B:757:SER:O	1:B:759:SER:N	2.44	0.46
1:B:757:SER:C	1:B:759:SER:H	2.20	0.44
1:A:824:GLU:OE1	1:A:826[B]:MET:CE	2.66	0.44
1:B:757:SER:C	1:B:759:SER:N	2.71	0.43

All (5) symmetry-related close contacts are listed below. The label for Atom-2 includes the symmetry operator and encoded unit-cell translations to be applied.

Atom-1	Atom-2	Interatomic distance (Å)	Clash overlap (Å)
5:B:1061:HOH:O	5:B:1061:HOH:O[2_556]	1.04	1.16
5:B:1178:HOH:O	5:B:1178:HOH:O[2_555]	1.77	0.43
5:A:1113:HOH:O	5:A:1252:HOH:O[1_545]	1.89	0.31
5:B:1054:HOH:O	5:B:1129:HOH:O[2_556]	2.06	0.14
5:A:1216:HOH:O	5:B:1115:HOH:O[3_545]	2.18	0.02

## 5.3 Torsion angles [i](#)

### 5.3.1 Protein backbone [i](#)

In the following table, the Percentiles column shows the percent Ramachandran outliers of the chain as a percentile score with respect to all X-ray entries followed by that with respect to entries of similar resolution.

The Analysed column shows the number of residues for which the backbone conformation was analysed, and the total number of residues.

Mol	Chain	Analysed	Favoured	Allowed	Outliers	Percentiles
1	A	186/180 (103%)	181 (97%)	5 (3%)	0	100 100
1	B	182/180 (101%)	172 (94%)	8 (4%)	2 (1%)	14 3
All	All	368/360 (102%)	353 (96%)	13 (4%)	2 (0%)	25 13

All (2) Ramachandran outliers are listed below:

Mol	Chain	Res	Type
1	B	757	SER
1	B	758	GLN

### 5.3.2 Protein sidechains [i](#)

In the following table, the Percentiles column shows the percent sidechain outliers of the chain as a percentile score with respect to all X-ray entries followed by that with respect to entries of similar resolution.

The Analysed column shows the number of residues for which the sidechain conformation was analysed, and the total number of residues.

Mol	Chain	Analysed	Rotameric	Outliers	Percentiles	
1	A	178/171 (104%)	178 (100%)	0	100	100
1	B	165/171 (96%)	162 (98%)	3 (2%)	59	41
All	All	343/342 (100%)	340 (99%)	3 (1%)	86	69

All (3) residues with a non-rotameric sidechain are listed below:

Mol	Chain	Res	Type
1	B	711	TRP
1	B	862[A]	ASP
1	B	862[B]	ASP

Sometimes sidechains can be flipped to improve hydrogen bonding and reduce clashes. There are no such sidechains identified.

### 5.3.3 RNA [i](#)

There are no RNA molecules in this entry.

## 5.4 Non-standard residues in protein, DNA, RNA chains [i](#)

There are no non-standard protein/DNA/RNA residues in this entry.

## 5.5 Carbohydrates [i](#)

There are no monosaccharides in this entry.

## 5.6 Ligand geometry

Of 8 ligands modelled in this entry, 5 are monoatomic - leaving 3 for Mogul analysis.

In the following table, the Counts columns list the number of bonds (or angles) for which Mogul statistics could be retrieved, the number of bonds (or angles) that are observed in the model and the number of bonds (or angles) that are defined in the Chemical Component Dictionary. The Link column lists molecule types, if any, to which the group is linked. The Z score for a bond length (or angle) is the number of standard deviations the observed value is removed from the expected value. A bond length (or angle) with  $|Z| > 2$  is considered an outlier worth inspection. RMSZ is the root-mean-square of all Z scores of the bond lengths (or angles).

Mol	Type	Chain	Res	Link	Bond lengths			Bond angles		
					Counts	RMSZ	# Z  > 2	Counts	RMSZ	# Z  > 2
4	EDO	A	905	-	3,3,3	0.51	0	2,2,2	0.07	0
3	MES	A	904	-	12,12,12	1.32	1 (8%)	14,16,16	1.89	4 (28%)
4	EDO	B	903	-	3,3,3	0.33	0	2,2,2	0.55	0

In the following table, the Chirals column lists the number of chiral outliers, the number of chiral centers analysed, the number of these observed in the model and the number defined in the Chemical Component Dictionary. Similar counts are reported in the Torsion and Rings columns. '-' means no outliers of that kind were identified.

Mol	Type	Chain	Res	Link	Chirals	Torsions	Rings
4	EDO	A	905	-	-	1/1/1/1	-
3	MES	A	904	-	-	1/6/14/14	0/1/1/1
4	EDO	B	903	-	-	0/1/1/1	-

All (1) bond length outliers are listed below:

Mol	Chain	Res	Type	Atoms	Z	Observed(Å)	Ideal(Å)
3	A	904	MES	C8-S	-3.91	1.72	1.77

All (4) bond angle outliers are listed below:

Mol	Chain	Res	Type	Atoms	Z	Observed(°)	Ideal(°)
3	A	904	MES	C6-C5-N4	4.13	116.36	110.10
3	A	904	MES	C6-O1-C2	3.65	122.08	109.89
3	A	904	MES	C7-N4-C3	2.70	118.14	111.23
3	A	904	MES	C5-N4-C3	2.62	114.73	108.83

There are no chirality outliers.

All (2) torsion outliers are listed below:

Mol	Chain	Res	Type	Atoms
3	A	904	MES	C8-C7-N4-C3
4	A	905	EDO	O1-C1-C2-O2

There are no ring outliers.

3 monomers are involved in 5 short contacts:

Mol	Chain	Res	Type	Clashes	Symm-Clashes
4	A	905	EDO	2	0
3	A	904	MES	2	0
4	B	903	EDO	1	0

## 5.7 Other polymers [i](#)

There are no such residues in this entry.

## 5.8 Polymer linkage issues [i](#)

There are no chain breaks in this entry.

## 6 Fit of model and data [i](#)

### 6.1 Protein, DNA and RNA chains [i](#)

In the following table, the column labelled ‘#RSRZ> 2’ contains the number (and percentage) of RSRZ outliers, followed by percent RSRZ outliers for the chain as percentile scores relative to all X-ray entries and entries of similar resolution. The OWAB column contains the minimum, median, 95<sup>th</sup> percentile and maximum values of the occupancy-weighted average B-factor per residue. The column labelled ‘Q< 0.9’ lists the number of (and percentage) of residues with an average occupancy less than 0.9.

Mol	Chain	Analysed	<RSRZ>	#RSRZ>2	OWAB(Å <sup>2</sup> )	Q<0.9
1	A	178/180 (98%)	0.09	10 (5%) 24 27	13, 22, 53, 95	0
1	B	177/180 (98%)	0.47	22 (12%) 4 4	15, 24, 82, 126	0
All	All	355/360 (98%)	0.28	32 (9%) 9 10	13, 23, 70, 126	0

All (32) RSRZ outliers are listed below:

Mol	Chain	Res	Type	RSRZ
1	A	735	ALA	9.0
1	B	806	SER	7.9
1	B	757	SER	7.4
1	B	758	GLN	7.1
1	B	759	SER	6.4
1	B	804	GLU	6.3
1	B	805	GLY	5.9
1	B	800	TYR	5.8
1	A	736	ASN	5.1
1	B	803	ARG	5.0
1	B	756	GLU	4.1
1	B	876	GLU	4.0
1	B	735	ALA	4.0
1	B	875	GLN	3.9
1	A	737	LYS	3.5
1	B	760	GLY	3.5
1	B	736	ASN	3.1
1	A	878	SER	2.9
1	A	738	ASN	2.8
1	B	802	ASN	2.8
1	B	711	TRP	2.7
1	B	810	GLN	2.5
1	B	738	ASN	2.3
1	A	782	LEU	2.3

*Continued on next page...*

*Continued from previous page...*

Mol	Chain	Res	Type	RSRZ
1	B	737	LYS	2.2
1	B	807	GLN	2.2
1	A	701	ASN	2.2
1	A	703	ASN	2.2
1	B	808	GLY	2.2
1	A	739	PRO	2.2
1	A	783	LEU	2.1
1	B	850[A]	GLU	2.1

## 6.2 Non-standard residues in protein, DNA, RNA chains [i](#)

There are no non-standard protein/DNA/RNA residues in this entry.

## 6.3 Carbohydrates [i](#)

There are no monosaccharides in this entry.

## 6.4 Ligands [i](#)

In the following table, the Atoms column lists the number of modelled atoms in the group and the number defined in the chemical component dictionary. The B-factors column lists the minimum, median, 95<sup>th</sup> percentile and maximum values of B factors of atoms in the group. The column labelled 'Q< 0.9' lists the number of atoms with occupancy less than 0.9.

Mol	Type	Chain	Res	Atoms	RSCC	RSR	B-factors(Å <sup>2</sup> )	Q<0.9
2	ZN	A	903	1/1	0.20	0.34	102,102,102,102	1
4	EDO	A	905	4/4	0.87	0.38	45,53,61,69	0
4	EDO	B	903	4/4	0.96	0.09	32,40,41,43	0
2	ZN	A	902	1/1	0.97	0.05	28,28,28,28	0
3	MES	A	904	12/12	0.97	0.19	15,19,22,23	12
2	ZN	A	901	1/1	0.98	0.06	22,22,22,22	0
2	ZN	B	902	1/1	0.99	0.04	22,22,22,22	0
2	ZN	B	901	1/1	0.99	0.06	19,19,19,19	0

## 6.5 Other polymers [i](#)

There are no such residues in this entry.