



Full wwPDB X-ray Structure Validation Report ⓘ

Jun 17, 2024 – 05:24 AM EDT

PDB ID : 5OQ7
Title : Structure of CHK1 8-pt. mutant complex with arylbenzamide LRRK2 inhibitor
Authors : Dokurno, P.; Williamson, D.S.; Acheson-Dossang, P.; Chen, I.; Murray, J.B.; Shaw, T.; Surgenor, A.E.
Deposited on : 2017-08-10
Resolution : 2.10 Å(reported)

This is a Full wwPDB X-ray Structure Validation Report for a publicly released PDB entry.

We welcome your comments at validation@mail.wwpdb.org

A user guide is available at

<https://www.wwpdb.org/validation/2017/XrayValidationReportHelp>

with specific help available everywhere you see the ⓘ symbol.

The types of validation reports are described at

<http://www.wwpdb.org/validation/2017/FAQs#types>.

The following versions of software and data (see [references ⓘ](#)) were used in the production of this report:

MolProbity : 4.02b-467
Mogul : 1.8.5 (274361), CSD as541be (2020)
Xtriage (Phenix) : 1.13
EDS : 2.37.1
buster-report : 1.1.7 (2018)
Percentile statistics : 20191225.v01 (using entries in the PDB archive December 25th 2019)
Refmac : 5.8.0158
CCP4 : 7.0.044 (Gargrove)
Ideal geometry (proteins) : Engh & Huber (2001)
Ideal geometry (DNA, RNA) : Parkinson et al. (1996)
Validation Pipeline (wwPDB-VP) : 2.37.1

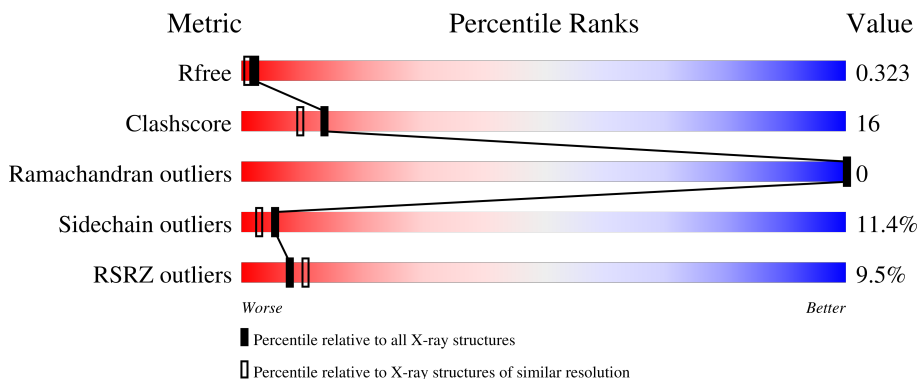
1 Overall quality at a glance

The following experimental techniques were used to determine the structure:

X-RAY DIFFRACTION

The reported resolution of this entry is 2.10 Å.

Percentile scores (ranging between 0-100) for global validation metrics of the entry are shown in the following graphic. The table shows the number of entries on which the scores are based.



Metric	Whole archive (#Entries)	Similar resolution (#Entries, resolution range(Å))
R_{free}	130704	5197 (2.10-2.10)
Clashscore	141614	5710 (2.10-2.10)
Ramachandran outliers	138981	5647 (2.10-2.10)
Sidechain outliers	138945	5648 (2.10-2.10)
RSRZ outliers	127900	5083 (2.10-2.10)

The table below summarises the geometric issues observed across the polymeric chains and their fit to the electron density. The red, orange, yellow and green segments of the lower bar indicate the fraction of residues that contain outliers for ≥ 3 , 2, 1 and 0 types of geometric quality criteria respectively. A grey segment represents the fraction of residues that are not modelled. The numeric value for each fraction is indicated below the corresponding segment, with a dot representing fractions $\leq 5\%$. The upper red bar (where present) indicates the fraction of residues that have poor fit to the electron density. The numeric value is given above the bar.

Mol	Chain	Length	Quality of chain
1	A	297	 6% 64% 19% 13%
1	B	297	 10% 55% 28% 14%

2 Entry composition [i](#)

There are 3 unique types of molecules in this entry. The entry contains 4374 atoms, of which 0 are hydrogens and 0 are deuteriums.

In the tables below, the ZeroOcc column contains the number of atoms modelled with zero occupancy, the AltConf column contains the number of residues with at least one atom in alternate conformation and the Trace column contains the number of residues modelled with at most 2 atoms.

- Molecule 1 is a protein called Serine/threonine-protein kinase Chk1.

Mol	Chain	Residues	Atoms					ZeroOcc	AltConf	Trace
			Total	C	N	O	S			
1	A	259	2076	1332	356	375	13	0	1	0
1	B	256	2061	1323	353	372	13	0	1	0

There are 32 discrepancies between the modelled and reference sequences:

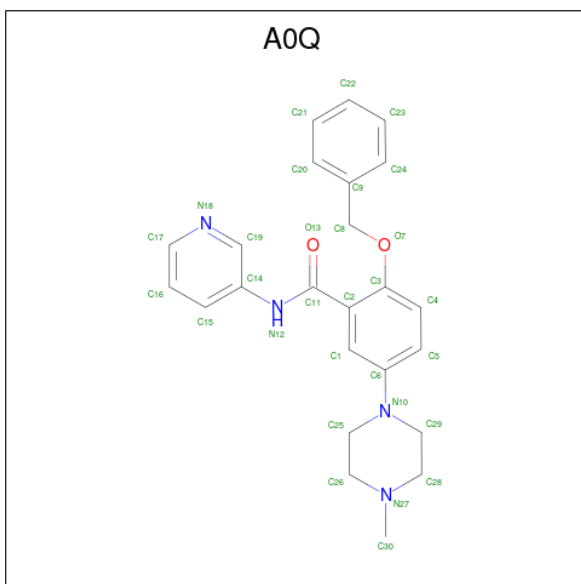
Chain	Residue	Modelled	Actual	Comment	Reference
A	59	LEU	ASN	engineered mutation	UNP O14757
A	68	ILE	VAL	engineered mutation	UNP O14757
A	84	MET	LEU	engineered mutation	UNP O14757
A	86	LEU	TYR	engineered mutation	UNP O14757
A	87	ALA	CYS	engineered mutation	UNP O14757
A	91	SER	GLU	engineered mutation	UNP O14757
A	134	HIS	GLU	engineered mutation	UNP O14757
A	147	ALA	SER	engineered mutation	UNP O14757
A	290	HIS	-	expression tag	UNP O14757
A	291	HIS	-	expression tag	UNP O14757
A	292	HIS	-	expression tag	UNP O14757
A	293	HIS	-	expression tag	UNP O14757
A	294	HIS	-	expression tag	UNP O14757
A	295	HIS	-	expression tag	UNP O14757
A	296	HIS	-	expression tag	UNP O14757
A	297	HIS	-	expression tag	UNP O14757
B	59	LEU	ASN	engineered mutation	UNP O14757
B	68	ILE	VAL	engineered mutation	UNP O14757
B	84	MET	LEU	engineered mutation	UNP O14757
B	86	LEU	TYR	engineered mutation	UNP O14757
B	87	ALA	CYS	engineered mutation	UNP O14757
B	91	SER	GLU	engineered mutation	UNP O14757
B	134	HIS	GLU	engineered mutation	UNP O14757
B	147	ALA	SER	engineered mutation	UNP O14757
B	290	HIS	-	expression tag	UNP O14757

Continued on next page...

Continued from previous page...

Chain	Residue	Modelled	Actual	Comment	Reference
B	291	HIS	-	expression tag	UNP O14757
B	292	HIS	-	expression tag	UNP O14757
B	293	HIS	-	expression tag	UNP O14757
B	294	HIS	-	expression tag	UNP O14757
B	295	HIS	-	expression tag	UNP O14757
B	296	HIS	-	expression tag	UNP O14757
B	297	HIS	-	expression tag	UNP O14757

- Molecule 2 is 5-(4-methylpiperazin-1-yl)-2-phenylmethoxy- {N}-pyridin-3-yl-benzamide (three-letter code: A0Q) (formula: C₂₄H₂₆N₄O₂) (labeled as "Ligand of Interest" by depositor).



Mol	Chain	Residues	Atoms				ZeroOcc	AltConf
			Total	C	N	O		
2	A	1	Total	C	N	O	0	0
			30	24	4	2		
2	B	1	Total	C	N	O	0	0
			30	24	4	2		

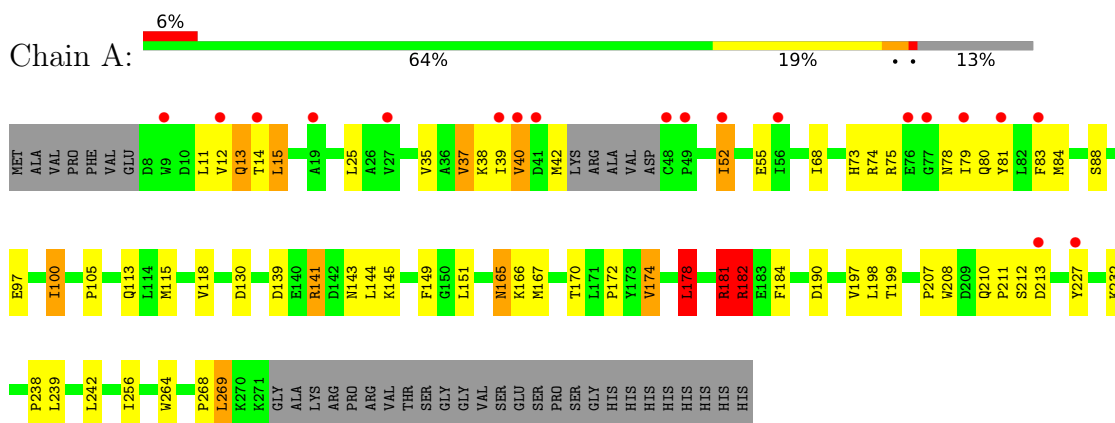
- Molecule 3 is water.

Mol	Chain	Residues	Atoms		ZeroOcc	AltConf
			Total	O		
3	A	91	Total	O	0	0
			91	91		
3	B	86	Total	O	0	0
			86	86		

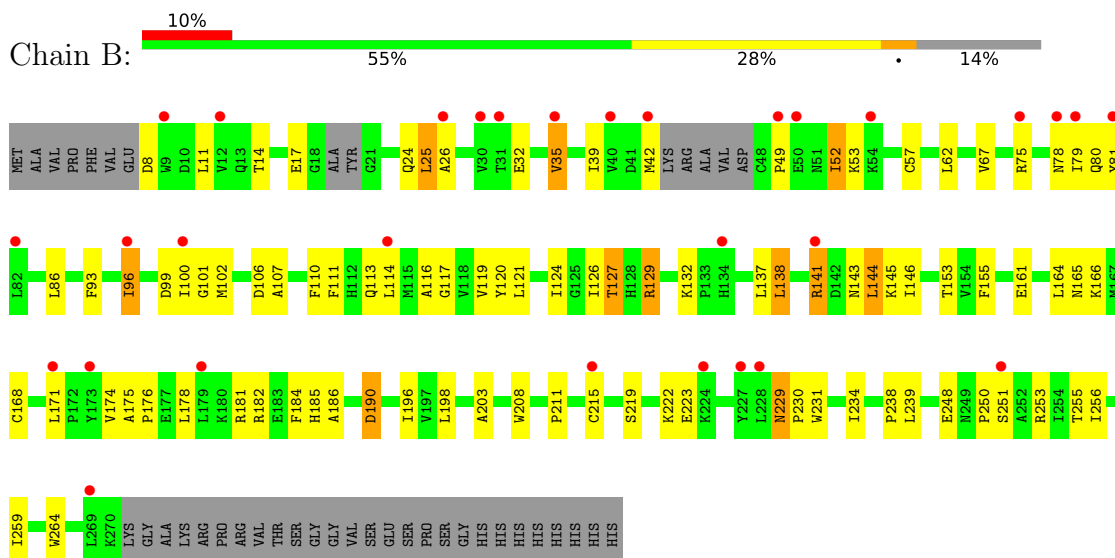
3 Residue-property plots [i](#)

These plots are drawn for all protein, RNA, DNA and oligosaccharide chains in the entry. The first graphic for a chain summarises the proportions of the various outlier classes displayed in the second graphic. The second graphic shows the sequence view annotated by issues in geometry and electron density. Residues are color-coded according to the number of geometric quality criteria for which they contain at least one outlier: green = 0, yellow = 1, orange = 2 and red = 3 or more. A red dot above a residue indicates a poor fit to the electron density ($RSRZ > 2$). Stretches of 2 or more consecutive residues without any outlier are shown as a green connector. Residues present in the sample, but not in the model, are shown in grey.

- Molecule 1: Serine/threonine-protein kinase Chk1



- Molecule 1: Serine/threonine-protein kinase Chk1



4 Data and refinement statistics i

Property	Value	Source
Space group	P 1 21 1	Depositor
Cell constants a, b, c, α , β , γ	45.21Å 66.25Å 109.32Å 90.00° 100.76° 90.00°	Depositor
Resolution (Å)	40.00 – 2.10 38.58 – 2.10	Depositor EDS
% Data completeness (in resolution range)	98.8 (40.00-2.10) 98.8 (38.58-2.10)	Depositor EDS
R_{merge}	(Not available)	Depositor
R_{sym}	0.06	Depositor
$\langle I/\sigma(I) \rangle$ ¹	2.55 (at 2.10Å)	Xtrriage
Refinement program	REFMAC 5.8.0158	Depositor
R, R_{free}	0.255 , 0.324 0.260 , 0.323	Depositor DCC
R_{free} test set	1836 reflections (4.99%)	wwPDB-VP
Wilson B-factor (Å ²)	32.0	Xtrriage
Anisotropy	0.132	Xtrriage
Bulk solvent k_{sol} (e/Å ³), B_{sol} (Å ²)	0.34 , 56.4	EDS
L-test for twinning ²	$\langle L \rangle = 0.47$, $\langle L^2 \rangle = 0.30$	Xtrriage
Estimated twinning fraction	0.002 for h,-k,-h-l	Xtrriage
F_o, F_c correlation	0.91	EDS
Total number of atoms	4374	wwPDB-VP
Average B, all atoms (Å ²)	39.0	wwPDB-VP

Xtrriage's analysis on translational NCS is as follows: *The analyses of the Patterson function reveals a significant off-origin peak that is 28.24 % of the origin peak, indicating pseudo-translational symmetry. The chance of finding a peak of this or larger height randomly in a structure without pseudo-translational symmetry is equal to 1.9077e-03. The detected translational NCS is most likely also responsible for the elevated intensity ratio.*

¹Intensities estimated from amplitudes.

²Theoretical values of $\langle |L| \rangle$, $\langle L^2 \rangle$ for acentric reflections are 0.5, 0.333 respectively for untwinned datasets, and 0.375, 0.2 for perfectly twinned datasets.

5 Model quality [i](#)

5.1 Standard geometry [i](#)

Bond lengths and bond angles in the following residue types are not validated in this section: A0Q

The Z score for a bond length (or angle) is the number of standard deviations the observed value is removed from the expected value. A bond length (or angle) with $|Z| > 5$ is considered an outlier worth inspection. RMSZ is the root-mean-square of all Z scores of the bond lengths (or angles).

Mol	Chain	Bond lengths		Bond angles	
		RMSZ	# Z >5	RMSZ	# Z >5
1	A	0.85	0/2128	0.99	8/2884 (0.3%)
1	B	0.80	0/2112	0.94	4/2860 (0.1%)
All	All	0.83	0/4240	0.97	12/5744 (0.2%)

There are no bond length outliers.

All (12) bond angle outliers are listed below:

Mol	Chain	Res	Type	Atoms	Z	Observed(°)	Ideal(°)
1	A	182	ARG	NE-CZ-NH1	10.19	125.40	120.30
1	B	190	ASP	CB-CG-OD1	7.41	124.97	118.30
1	A	182	ARG	NE-CZ-NH2	-6.79	116.90	120.30
1	A	178	LEU	CA-CB-CG	6.08	129.28	115.30
1	A	181	ARG	NE-CZ-NH2	-6.01	117.30	120.30
1	A	141	ARG	NE-CZ-NH2	5.87	123.23	120.30
1	A	182	ARG	CG-CD-NE	5.58	123.53	111.80
1	A	182	ARG	CD-NE-CZ	5.53	131.34	123.60
1	B	190	ASP	CB-CG-OD2	-5.42	113.42	118.30
1	A	269	LEU	CA-CB-CG	5.35	127.60	115.30
1	B	129	ARG	NE-CZ-NH2	-5.28	117.66	120.30
1	B	181	ARG	NE-CZ-NH1	5.07	122.83	120.30

There are no chirality outliers.

There are no planarity outliers.

5.2 Too-close contacts [i](#)

In the following table, the Non-H and H(model) columns list the number of non-hydrogen atoms and hydrogen atoms in the chain respectively. The H(added) column lists the number of hydrogen

atoms added and optimized by MolProbity. The Clashes column lists the number of clashes within the asymmetric unit, whereas Symm-Clashes lists symmetry-related clashes.

Mol	Chain	Non-H	H(model)	H(added)	Clashes	Symm-Clashes
1	A	2076	0	2067	47	1
1	B	2061	0	2057	85	1
2	A	30	0	0	0	0
2	B	30	0	0	0	0
3	A	91	0	0	17	1
3	B	86	0	0	58	0
All	All	4374	0	4124	132	2

The all-atom clashscore is defined as the number of clashes found per 1000 atoms (including hydrogen atoms). The all-atom clashscore for this structure is 16.

All (132) close contacts within the same asymmetric unit are listed below, sorted by their clash magnitude.

Atom-1	Atom-2	Interatomic distance (Å)	Clash overlap (Å)
1:B:110:PHE:HB2	3:B:416:HOH:O	1.29	1.27
1:B:178:LEU:HA	3:B:415:HOH:O	1.49	1.13
1:B:153:THR:HG22	3:B:427:HOH:O	1.48	1.11
1:B:255:THR:O	3:B:401:HOH:O	1.65	1.11
1:B:117:GLY:N	3:B:403:HOH:O	1.96	0.99
1:B:256:ILE:HA	3:B:401:HOH:O	1.64	0.98
1:B:190:ASP:HA	3:B:409:HOH:O	1.62	0.97
1:B:208:TRP:CD1	3:B:408:HOH:O	2.16	0.96
1:B:129:ARG:NH1	3:B:404:HOH:O	1.96	0.95
1:B:62:LEU:HA	3:B:405:HOH:O	1.73	0.88
1:B:114:LEU:HD12	3:B:410:HOH:O	1.71	0.88
1:B:93:PHE:O	3:B:402:HOH:O	1.94	0.85
1:B:106:ASP:HB3	3:B:456:HOH:O	1.78	0.82
1:B:102:MET:SD	3:B:456:HOH:O	2.38	0.80
1:A:139:ASP:O	3:A:401:HOH:O	1.99	0.80
1:A:73:HIS:HA	1:A:81:TYR:O	1.81	0.80
1:A:42:MET:N	1:A:78:ASN:O	2.15	0.79
1:A:118:VAL:HB	3:A:404:HOH:O	1.84	0.78
1:B:255:THR:C	3:B:401:HOH:O	2.16	0.77
1:B:107:ALA:HA	3:B:416:HOH:O	1.84	0.77
1:B:184:PHE:CD1	3:B:415:HOH:O	2.38	0.75
1:A:55:GLU:HG3	3:A:476:HOH:O	1.87	0.75
1:A:38:LYS:NZ	1:A:55:GLU:OE2	2.19	0.75
1:A:268:PRO:HB2	3:A:408:HOH:O	1.85	0.75
1:B:110:PHE:CE2	3:B:456:HOH:O	2.40	0.74

Continued on next page...

Continued from previous page...

Atom-1	Atom-2	Interatomic distance (Å)	Clash overlap (Å)
1:A:15:LEU:HD11	1:A:25:LEU:HB2	1.69	0.74
1:B:256:ILE:CA	3:B:401:HOH:O	2.26	0.72
1:B:120:TYR:OH	3:B:405:HOH:O	2.06	0.71
1:B:259:ILE:CG1	3:B:401:HOH:O	2.39	0.71
1:A:149:PHE:HB2	3:A:476:HOH:O	1.91	0.70
1:B:161:GLU:OE1	1:B:185:HIS:ND1	2.18	0.70
1:B:111:PHE:HA	3:B:476:HOH:O	1.92	0.70
1:B:113:GLN:O	3:B:403:HOH:O	2.11	0.68
1:B:110:PHE:HA	3:B:414:HOH:O	1.94	0.68
1:B:208:TRP:HD1	3:B:408:HOH:O	1.67	0.67
1:B:132:LYS:HB2	3:B:467:HOH:O	1.95	0.66
1:B:146:ILE:HD11	3:B:410:HOH:O	1.97	0.65
1:A:105:PRO:HD3	3:A:482:HOH:O	1.98	0.64
1:A:170:THR:HG22	1:A:172:PRO:HD2	1.81	0.63
1:A:269:LEU:O	3:A:402:HOH:O	2.15	0.62
1:B:175:ALA:N	3:B:407:HOH:O	2.30	0.62
1:B:186:ALA:HB3	3:B:442:HOH:O	1.99	0.61
1:B:62:LEU:HD23	3:B:405:HOH:O	1.99	0.61
1:B:259:ILE:HG13	3:B:401:HOH:O	1.98	0.61
1:B:144:LEU:C	1:B:144:LEU:HD23	2.21	0.61
1:B:144:LEU:HD13	3:B:414:HOH:O	2.00	0.60
1:B:121:LEU:HA	3:B:450:HOH:O	2.00	0.60
1:B:259:ILE:HD12	3:B:401:HOH:O	2.01	0.60
1:B:124:ILE:CG1	3:B:450:HOH:O	2.49	0.60
1:A:182:ARG:HH11	1:A:182:ARG:HG2	1.67	0.60
1:A:12:VAL:HG13	1:A:13:GLN:HG2	1.83	0.60
1:B:49:PRO:HA	1:B:52:ILE:HG22	1.84	0.59
1:B:248:GLU:HA	3:B:411:HOH:O	2.02	0.59
1:A:165:ASN:HD22	1:A:165:ASN:C	2.06	0.58
1:A:40:VAL:HG23	1:A:80:GLN:HB2	1.85	0.58
1:B:253:ARG:NH1	3:B:411:HOH:O	2.37	0.57
1:B:138:LEU:HD12	1:B:144:LEU:HA	1.86	0.57
1:B:75:ARG:CB	1:B:80:GLN:NE2	2.68	0.56
1:B:176:PRO:HG2	3:B:411:HOH:O	2.06	0.56
1:B:127:THR:HG21	1:B:186:ALA:HB1	1.87	0.55
1:A:37:VAL:HG13	1:A:83:PHE:CD2	2.42	0.55
1:B:208:TRP:NE1	3:B:408:HOH:O	2.32	0.54
1:B:259:ILE:CD1	3:B:401:HOH:O	2.56	0.54
1:A:115:MET:HA	3:A:404:HOH:O	2.06	0.54
1:B:184:PHE:CG	3:B:415:HOH:O	2.61	0.54
1:A:207:PRO:HB2	1:A:208:TRP:CE3	2.43	0.53

Continued on next page...

Continued from previous page...

Atom-1	Atom-2	Interatomic distance (Å)	Clash overlap (Å)
1:B:164:LEU:HD11	1:B:186:ALA:CB	2.38	0.53
1:A:213:ASP:HA	3:A:443:HOH:O	2.09	0.53
1:B:116:ALA:HB3	3:B:403:HOH:O	2.09	0.52
1:B:256:ILE:HA	1:B:259:ILE:HD12	1.91	0.52
1:A:238:PRO:HD3	1:A:264:TRP:CD1	2.45	0.52
1:B:248:GLU:O	1:B:250:PRO:HD3	2.10	0.52
1:A:167:MET:HG2	1:A:178:LEU:HD13	1.91	0.51
1:B:96:ILE:CG2	1:B:101:GLY:HA2	2.41	0.51
1:A:79:ILE:HG22	1:A:81:TYR:CE1	2.47	0.50
1:B:124:ILE:CD1	3:B:405:HOH:O	2.60	0.49
1:B:196:ILE:HA	3:B:455:HOH:O	2.12	0.49
1:B:110:PHE:CA	3:B:414:HOH:O	2.57	0.49
1:B:124:ILE:HD11	3:B:405:HOH:O	2.13	0.48
1:B:126:ILE:HB	3:B:450:HOH:O	2.13	0.48
1:A:198:LEU:C	3:A:403:HOH:O	2.51	0.48
1:A:144:LEU:C	1:A:144:LEU:HD23	2.34	0.48
1:B:166:LYS:NZ	1:B:168:CYS:HB3	2.29	0.48
1:B:168:CYS:HA	3:B:474:HOH:O	2.14	0.48
1:A:199:THR:HA	3:A:403:HOH:O	2.14	0.47
1:B:79:ILE:HG21	1:B:81:TYR:CZ	2.49	0.47
1:A:190:ASP:HB2	3:A:433:HOH:O	2.14	0.47
1:B:164:LEU:HD11	1:B:186:ALA:HB2	1.96	0.47
1:B:96:ILE:HG23	1:B:101:GLY:HA2	1.97	0.47
1:B:26:ALA:HB3	1:B:35:VAL:HG12	1.97	0.46
1:B:42:MET:HE2	1:B:49:PRO:HB3	1.97	0.46
1:A:12:VAL:CG1	1:A:25:LEU:HD22	2.45	0.46
1:B:110:PHE:CD2	3:B:456:HOH:O	2.66	0.46
1:B:186:ALA:CB	3:B:442:HOH:O	2.62	0.46
1:A:130:ASP:HB2	1:A:151:LEU:HD12	1.97	0.45
1:B:222:LYS:HD3	1:B:248:GLU:OE2	2.16	0.45
1:A:52:ILE:HD13	1:A:52:ILE:HA	1.79	0.45
1:A:97:GLU:HB3	1:A:100:ILE:HG13	1.98	0.45
1:B:67:VAL:HB	3:B:460:HOH:O	2.17	0.45
1:B:230:PRO:HD2	1:B:231:TRP:NE1	2.32	0.45
1:B:238:PRO:HD3	1:B:264:TRP:CD1	2.52	0.45
1:A:74:ARG:O	1:A:81:TYR:HD1	1.99	0.44
1:A:190:ASP:CB	3:A:433:HOH:O	2.65	0.44
1:B:137:LEU:O	1:B:145:LYS:N	2.49	0.44
1:A:73:HIS:CA	1:A:81:TYR:O	2.60	0.44
1:A:178:LEU:HD22	1:A:184:PHE:CZ	2.52	0.44
1:A:42:MET:CE	1:A:78:ASN:OD1	2.66	0.43

Continued on next page...

Continued from previous page...

Atom-1	Atom-2	Interatomic distance (Å)	Clash overlap (Å)
1:A:242:LEU:HD11	3:A:403:HOH:O	2.18	0.43
1:A:227:TYR:N	3:A:415:HOH:O	2.48	0.43
1:A:12:VAL:HG13	1:A:13:GLN:HE21	1.84	0.43
1:B:229:ASN:OD1	3:B:406:HOH:O	2.21	0.43
1:A:75:ARG:HA	1:A:79:ILE:O	2.19	0.43
1:A:197:VAL:HG12	3:A:421:HOH:O	2.18	0.42
1:A:210:GLN:HE21	1:A:212:SER:HB3	1.84	0.42
1:A:256:ILE:HD13	3:A:404:HOH:O	2.18	0.42
1:A:42:MET:C	1:A:78:ASN:HB3	2.40	0.42
1:B:25:LEU:HD23	1:B:86:LEU:HD13	2.01	0.42
1:B:203:ALA:HB2	1:B:234:ILE:HD11	2.01	0.42
1:B:124:ILE:HG13	3:B:450:HOH:O	2.18	0.42
1:B:211:PRO:HD3	3:B:408:HOH:O	2.20	0.42
1:B:164:LEU:HD23	3:B:434:HOH:O	2.20	0.41
1:B:53:LYS:O	1:B:57[A]:CYS:SG	2.75	0.41
1:B:141:ARG:HG3	1:B:143:ASN:OD1	2.20	0.41
1:A:174:VAL:O	1:A:211:PRO:HG3	2.20	0.41
1:B:178:LEU:HD23	1:B:184:PHE:CE2	2.55	0.41
1:A:113:GLN:HE22	1:A:143:ASN:HD22	1.67	0.41
1:B:119:VAL:CG2	1:B:256:ILE:HG21	2.51	0.41
1:B:124:ILE:HG12	3:B:450:HOH:O	2.17	0.41
1:B:166:LYS:HZ2	1:B:168:CYS:HB3	1.84	0.41
1:A:174:VAL:HG22	1:A:178:LEU:HG	2.03	0.41
1:B:107:ALA:CA	3:B:416:HOH:O	2.57	0.41
1:B:155:PHE:HB3	3:B:434:HOH:O	2.20	0.40

All (2) symmetry-related close contacts are listed below. The label for Atom-2 includes the symmetry operator and encoded unit-cell translations to be applied.

Atom-1	Atom-2	Interatomic distance (Å)	Clash overlap (Å)
1:A:181:ARG:NH2	1:B:32:GLU:OE2[1_554]	1.69	0.51
3:A:426:HOH:O	3:A:480:HOH:O[2_555]	2.19	0.01

5.3 Torsion angles

5.3.1 Protein backbone

In the following table, the Percentiles column shows the percent Ramachandran outliers of the chain as a percentile score with respect to all X-ray entries followed by that with respect to entries of similar resolution.

The Analysed column shows the number of residues for which the backbone conformation was analysed, and the total number of residues.

Mol	Chain	Analysed	Favoured	Allowed	Outliers	Percentiles	
1	A	256/297 (86%)	249 (97%)	7 (3%)	0	100	100
1	B	251/297 (84%)	243 (97%)	8 (3%)	0	100	100
All	All	507/594 (85%)	492 (97%)	15 (3%)	0	100	100

There are no Ramachandran outliers to report.

5.3.2 Protein sidechains [i](#)

In the following table, the Percentiles column shows the percent sidechain outliers of the chain as a percentile score with respect to all X-ray entries followed by that with respect to entries of similar resolution.

The Analysed column shows the number of residues for which the sidechain conformation was analysed, and the total number of residues.

Mol	Chain	Analysed	Rotameric	Outliers	Percentiles	
1	A	224/259 (86%)	201 (90%)	23 (10%)	7	4
1	B	224/259 (86%)	196 (88%)	28 (12%)	4	2
All	All	448/518 (86%)	397 (89%)	51 (11%)	5	3

All (51) residues with a non-rotameric sidechain are listed below:

Mol	Chain	Res	Type
1	A	11	LEU
1	A	13	GLN
1	A	14	THR
1	A	15	LEU
1	A	35	VAL
1	A	37	VAL
1	A	39	ILE
1	A	40	VAL
1	A	52	ILE
1	A	68	ILE
1	A	84	MET
1	A	88	SER
1	A	100	ILE
1	A	141	ARG
1	A	145	LYS

Continued on next page...

Continued from previous page...

Mol	Chain	Res	Type
1	A	165	ASN
1	A	166	LYS
1	A	174	VAL
1	A	178	LEU
1	A	181	ARG
1	A	182	ARG
1	A	232	LYS
1	A	239	LEU
1	B	8	ASP
1	B	11	LEU
1	B	14	THR
1	B	17	GLU
1	B	24	GLN
1	B	25	LEU
1	B	35	VAL
1	B	39	ILE
1	B	52	ILE
1	B	78	ASN
1	B	96	ILE
1	B	99	ASP
1	B	100	ILE
1	B	127	THR
1	B	138	LEU
1	B	141	ARG
1	B	144	LEU
1	B	165	ASN
1	B	171	LEU
1	B	174	VAL
1	B	182	ARG
1	B	198	LEU
1	B	215	CYS
1	B	219	SER
1	B	223	GLU
1	B	229	ASN
1	B	239	LEU
1	B	251	SER

Sometimes sidechains can be flipped to improve hydrogen bonding and reduce clashes. All (11) such sidechains are listed below:

Mol	Chain	Res	Type
1	A	13	GLN
1	A	143	ASN

Continued on next page...

Continued from previous page...

Mol	Chain	Res	Type
1	A	165	ASN
1	A	210	GLN
1	B	24	GLN
1	B	51	ASN
1	B	78	ASN
1	B	80	GLN
1	B	158	ASN
1	B	165	ASN
1	B	229	ASN

5.3.3 RNA [i](#)

There are no RNA molecules in this entry.

5.4 Non-standard residues in protein, DNA, RNA chains [i](#)

There are no non-standard protein/DNA/RNA residues in this entry.

5.5 Carbohydrates [i](#)

There are no monosaccharides in this entry.

5.6 Ligand geometry [i](#)

2 ligands are modelled in this entry.

In the following table, the Counts columns list the number of bonds (or angles) for which Mogul statistics could be retrieved, the number of bonds (or angles) that are observed in the model and the number of bonds (or angles) that are defined in the Chemical Component Dictionary. The Link column lists molecule types, if any, to which the group is linked. The Z score for a bond length (or angle) is the number of standard deviations the observed value is removed from the expected value. A bond length (or angle) with $|Z| > 2$ is considered an outlier worth inspection. RMSZ is the root-mean-square of all Z scores of the bond lengths (or angles).

Mol	Type	Chain	Res	Link	Bond lengths			Bond angles		
					Counts	RMSZ	# Z > 2	Counts	RMSZ	# Z > 2
2	A0Q	A	301	-	33,33,33	1.16	3 (9%)	44,44,44	1.23	4 (9%)
2	A0Q	B	301	-	33,33,33	0.92	1 (3%)	44,44,44	2.00	13 (29%)

In the following table, the Chirals column lists the number of chiral outliers, the number of chiral

centers analysed, the number of these observed in the model and the number defined in the Chemical Component Dictionary. Similar counts are reported in the Torsion and Rings columns. '-' means no outliers of that kind were identified.

Mol	Type	Chain	Res	Link	Chirals	Torsions	Rings
2	A0Q	A	301	-	-	0/17/27/27	0/4/4/4
2	A0Q	B	301	-	-	0/17/27/27	0/4/4/4

All (4) bond length outliers are listed below:

Mol	Chain	Res	Type	Atoms	Z	Observed(Å)	Ideal(Å)
2	A	301	A0Q	C2-C11	3.56	1.57	1.50
2	A	301	A0Q	C29-N10	3.46	1.52	1.46
2	A	301	A0Q	C6-N10	2.62	1.46	1.38
2	B	301	A0Q	C25-N10	2.25	1.50	1.46

All (17) bond angle outliers are listed below:

Mol	Chain	Res	Type	Atoms	Z	Observed(°)	Ideal(°)
2	B	301	A0Q	C1-C6-N10	-6.18	114.68	121.33
2	B	301	A0Q	C25-C26-N27	-4.10	106.17	110.80
2	A	301	A0Q	C29-N10-C25	3.63	119.53	111.52
2	B	301	A0Q	C29-N10-C25	3.45	119.13	111.52
2	B	301	A0Q	C2-C11-N12	3.38	122.52	116.06
2	B	301	A0Q	C29-C28-N27	-3.24	107.15	110.80
2	B	301	A0Q	C4-C5-C6	-3.07	116.29	120.32
2	B	301	A0Q	C30-N27-C26	3.04	115.21	110.66
2	B	301	A0Q	C28-N27-C26	2.96	113.67	109.52
2	A	301	A0Q	C3-C2-C11	-2.88	120.91	126.16
2	A	301	A0Q	C17-N18-C19	2.82	121.72	116.85
2	B	301	A0Q	O13-C11-C2	-2.79	115.92	121.01
2	B	301	A0Q	C8-O7-C3	2.76	123.20	117.76
2	B	301	A0Q	C17-N18-C19	2.66	121.46	116.85
2	B	301	A0Q	C30-N27-C28	2.53	114.45	110.66
2	A	301	A0Q	C2-C11-N12	2.16	120.20	116.06
2	B	301	A0Q	C28-C29-N10	-2.11	106.60	110.70

There are no chirality outliers.

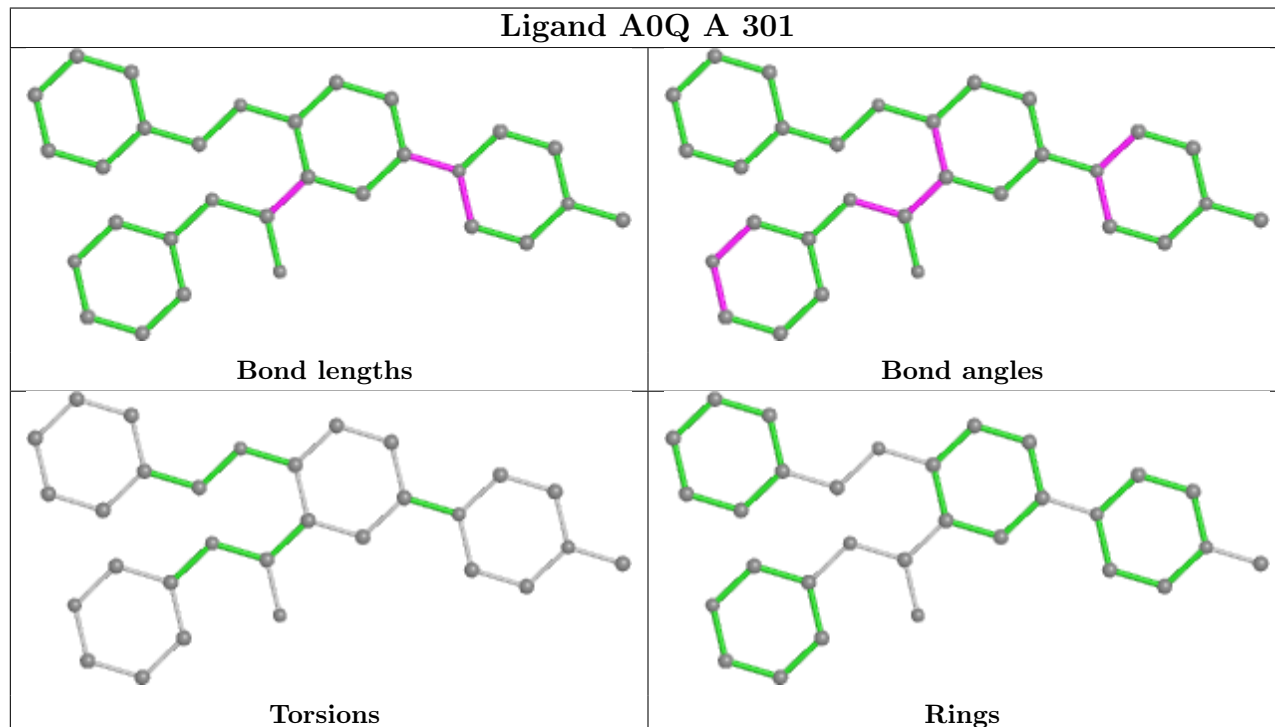
There are no torsion outliers.

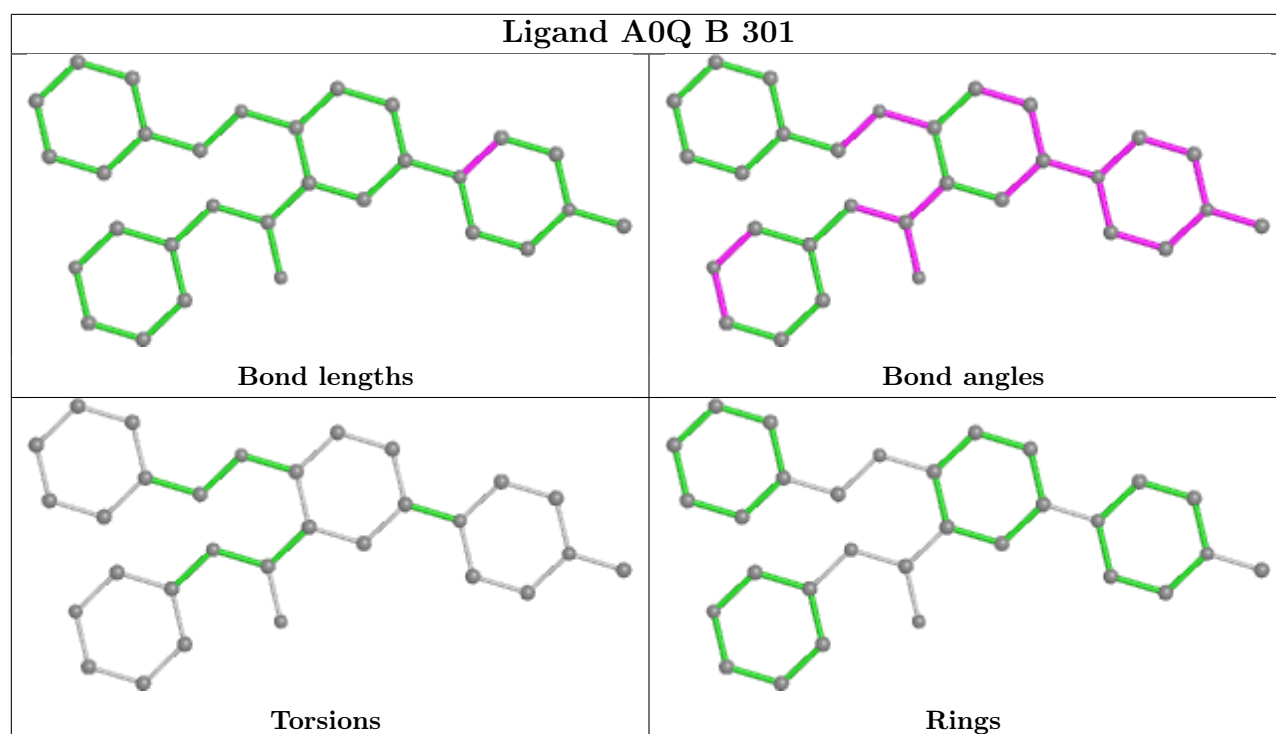
There are no ring outliers.

No monomer is involved in short contacts.

The following is a two-dimensional graphical depiction of Mogul quality analysis of bond lengths, bond angles, torsion angles, and ring geometry for all instances of the Ligand of Interest. In

addition, ligands with molecular weight > 250 and outliers as shown on the validation Tables will also be included. For torsion angles, if less than 5% of the Mogul distribution of torsion angles is within 10 degrees of the torsion angle in question, then that torsion angle is considered an outlier. Any bond that is central to one or more torsion angles identified as an outlier by Mogul will be highlighted in the graph. For rings, the root-mean-square deviation (RMSD) between the ring in question and similar rings identified by Mogul is calculated over all ring torsion angles. If the average RMSD is greater than 60 degrees and the minimal RMSD between the ring in question and any Mogul-identified rings is also greater than 60 degrees, then that ring is considered an outlier. The outliers are highlighted in purple. The color gray indicates Mogul did not find sufficient equivalents in the CSD to analyse the geometry.





5.7 Other polymers [i](#)

There are no such residues in this entry.

5.8 Polymer linkage issues [i](#)

There are no chain breaks in this entry.

6 Fit of model and data

6.1 Protein, DNA and RNA chains

In the following table, the column labelled ‘#RSRZ > 2’ contains the number (and percentage) of RSRZ outliers, followed by percent RSRZ outliers for the chain as percentile scores relative to all X-ray entries and entries of similar resolution. The OWAB column contains the minimum, median, 95th percentile and maximum values of the occupancy-weighted average B-factor per residue. The column labelled ‘Q < 0.9’ lists the number of (and percentage) of residues with an average occupancy less than 0.9.

Mol	Chain	Analysed	<RSRZ>	#RSRZ>2	OWAB(Å ²)	Q<0.9
1	A	259/297 (87%)	0.58	19 (7%) 15 19	14, 31, 71, 82	0
1	B	256/297 (86%)	1.00	30 (11%) 4 6	24, 41, 66, 84	0
All	All	515/594 (86%)	0.79	49 (9%) 8 10	14, 37, 69, 84	0

All (49) RSRZ outliers are listed below:

Mol	Chain	Res	Type	RSRZ
1	B	40	VAL	7.2
1	B	42	MET	5.3
1	A	41	ASP	4.4
1	A	83	PHE	4.3
1	A	79	ILE	4.0
1	A	81	TYR	4.0
1	B	81	TYR	4.0
1	A	9	TRP	3.9
1	B	49	PRO	3.6
1	B	96	ILE	3.5
1	A	27	VAL	3.4
1	B	179	LEU	3.4
1	B	227	TYR	3.3
1	B	9	TRP	3.2
1	A	213	ASP	3.1
1	B	141	ARG	2.9
1	B	31	THR	2.9
1	B	30	VAL	2.9
1	A	19	ALA	2.9
1	A	77	GLY	2.9
1	B	54	LYS	2.8
1	B	12	VAL	2.8
1	B	100	ILE	2.7
1	A	40	VAL	2.7

Continued on next page...

Continued from previous page...

Mol	Chain	Res	Type	RSRZ
1	A	49	PRO	2.6
1	B	251	SER	2.6
1	B	269	LEU	2.5
1	A	12	VAL	2.5
1	A	52	ILE	2.5
1	B	224	LYS	2.5
1	B	26	ALA	2.5
1	A	14	THR	2.4
1	B	173	TYR	2.4
1	B	82	LEU	2.4
1	A	39	ILE	2.4
1	A	76	GLU	2.3
1	B	75	ARG	2.3
1	B	215	CYS	2.3
1	B	78	ASN	2.3
1	A	56	ILE	2.3
1	A	227	TYR	2.3
1	B	228	LEU	2.2
1	B	134	HIS	2.2
1	B	79	ILE	2.2
1	B	50	GLU	2.2
1	A	48	CYS	2.1
1	B	114	LEU	2.1
1	B	171	LEU	2.0
1	B	35	VAL	2.0

6.2 Non-standard residues in protein, DNA, RNA chains [i](#)

There are no non-standard protein/DNA/RNA residues in this entry.

6.3 Carbohydrates [i](#)

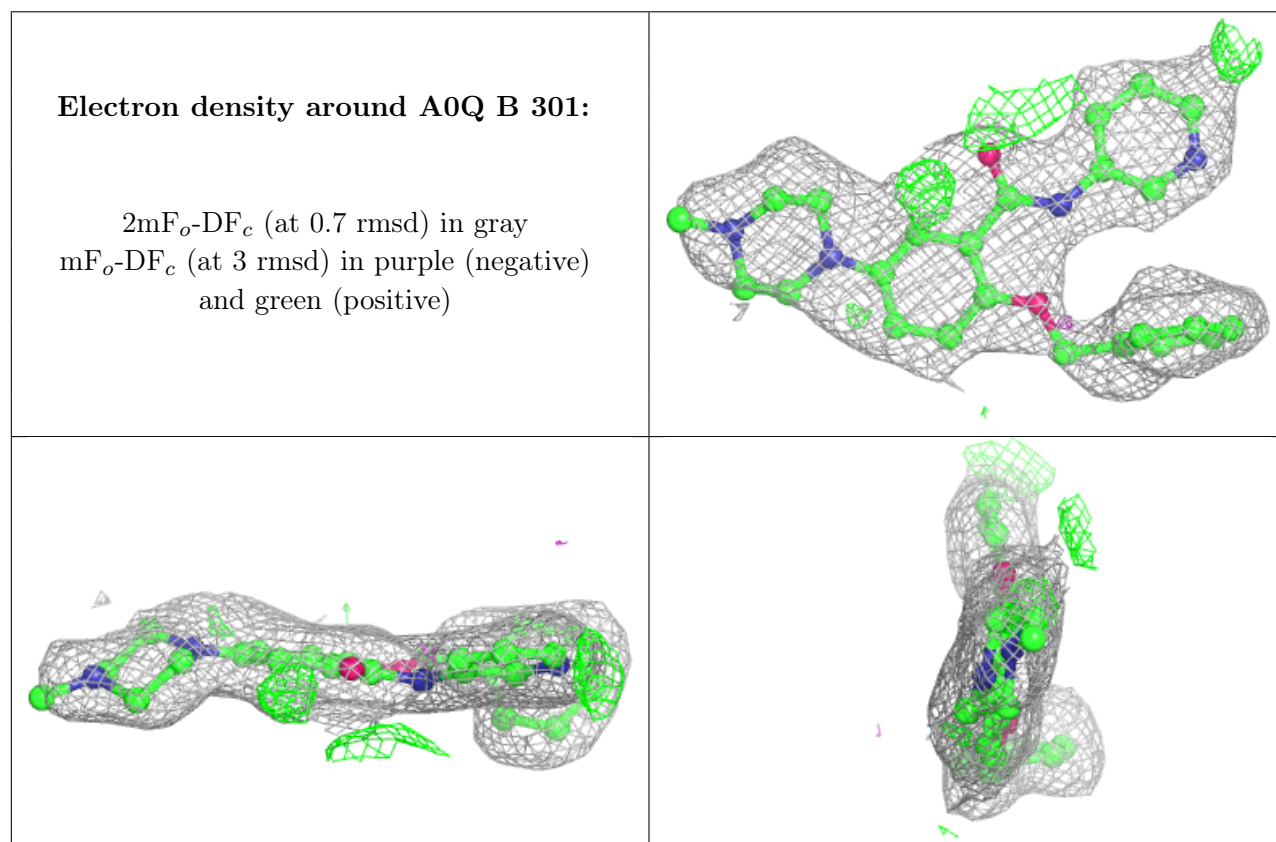
There are no monosaccharides in this entry.

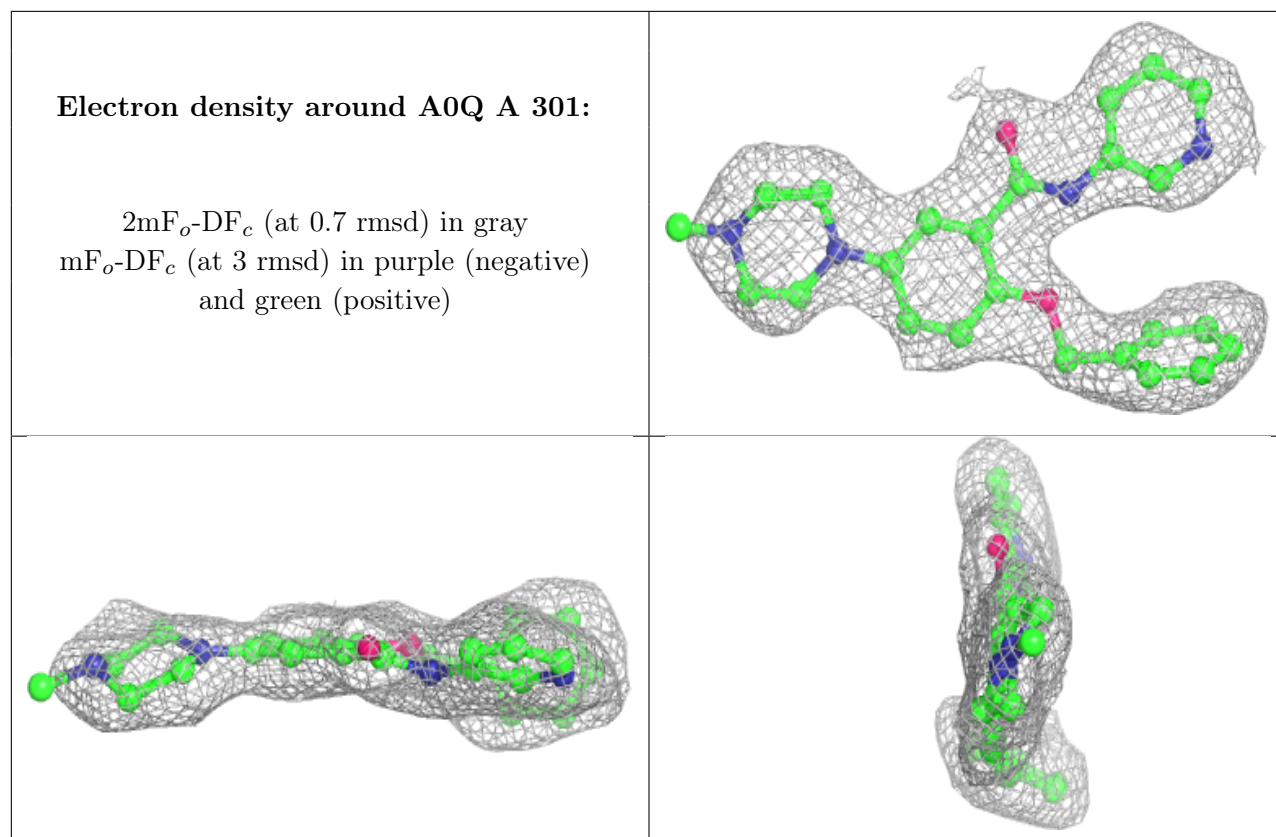
6.4 Ligands [i](#)

In the following table, the Atoms column lists the number of modelled atoms in the group and the number defined in the chemical component dictionary. The B-factors column lists the minimum, median, 95th percentile and maximum values of B factors of atoms in the group. The column labelled 'Q< 0.9' lists the number of atoms with occupancy less than 0.9.

Mol	Type	Chain	Res	Atoms	RSCC	RSR	B-factors(\AA^2)	Q<0.9
2	A0Q	B	301	30/30	0.85	0.19	31,46,56,57	0
2	A0Q	A	301	30/30	0.90	0.16	23,41,51,53	0

The following is a graphical depiction of the model fit to experimental electron density of all instances of the Ligand of Interest. In addition, ligands with molecular weight > 250 and outliers as shown on the geometry validation Tables will also be included. Each fit is shown from different orientation to approximate a three-dimensional view.





6.5 Other polymers [i](#)

There are no such residues in this entry.