



Full wwPDB X-ray Structure Validation Report ⓘ

Jan 3, 2024 – 07:49 pm GMT

PDB ID : 5L3Q
Title : Structure of the GTPase heterodimer of human SRP54 and SRalpha
Authors : Wild, K.; Segnitz, B.; Sinning, I.
Deposited on : 2016-05-24
Resolution : 3.20 Å(reported)

This is a Full wwPDB X-ray Structure Validation Report for a publicly released PDB entry.

We welcome your comments at validation@mail.wwpdb.org

A user guide is available at

<https://www.wwpdb.org/validation/2017/XrayValidationReportHelp>

with specific help available everywhere you see the ⓘ symbol.

The types of validation reports are described at

<http://www.wwpdb.org/validation/2017/FAQs#types>.

The following versions of software and data (see [references ⓘ](#)) were used in the production of this report:

MolProbity : 4.02b-467
Mogul : 1.8.4, CSD as541be (2020)
Xtriage (Phenix) : 1.13
EDS : 2.36
buster-report : 1.1.7 (2018)
Percentile statistics : 20191225.v01 (using entries in the PDB archive December 25th 2019)
Refmac : 5.8.0158
CCP4 : 7.0.044 (Gargrove)
Ideal geometry (proteins) : Engh & Huber (2001)
Ideal geometry (DNA, RNA) : Parkinson et al. (1996)
Validation Pipeline (wwPDB-VP) : 2.36

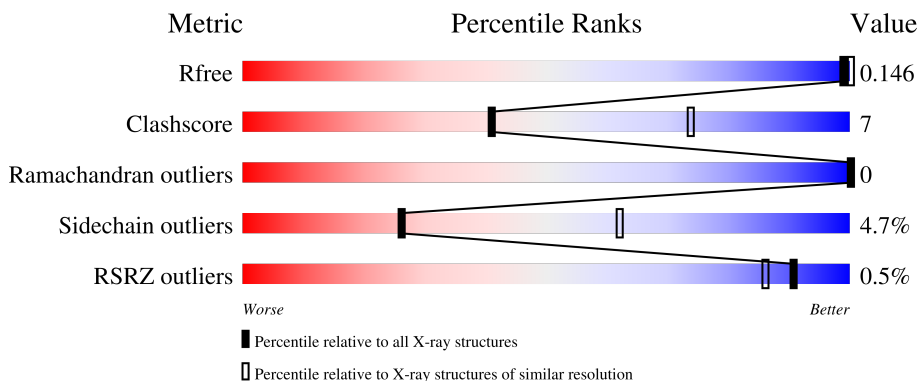
1 Overall quality at a glance i

The following experimental techniques were used to determine the structure:

X-RAY DIFFRACTION

The reported resolution of this entry is 3.20 Å.

Percentile scores (ranging between 0-100) for global validation metrics of the entry are shown in the following graphic. The table shows the number of entries on which the scores are based.



Metric	Whole archive (#Entries)	Similar resolution (#Entries, resolution range(Å))
R_{free}	130704	1133 (3.20-3.20)
Clashscore	141614	1253 (3.20-3.20)
Ramachandran outliers	138981	1234 (3.20-3.20)
Sidechain outliers	138945	1233 (3.20-3.20)
RSRZ outliers	127900	1095 (3.20-3.20)

The table below summarises the geometric issues observed across the polymeric chains and their fit to the electron density. The red, orange, yellow and green segments of the lower bar indicate the fraction of residues that contain outliers for ≥ 3 , 2, 1 and 0 types of geometric quality criteria respectively. A grey segment represents the fraction of residues that are not modelled. The numeric value for each fraction is indicated below the corresponding segment, with a dot representing fractions $\leq 5\%$. The upper red bar (where present) indicates the fraction of residues that have poor fit to the electron density. The numeric value is given above the bar.

Mol	Chain	Length	Quality of chain
1	A	442	
1	C	442	
2	B	638	
2	D	638	

The following table lists non-polymeric compounds, carbohydrate monomers and non-standard

residues in protein, DNA, RNA chains that are outliers for geometric or electron-density-fit criteria:

Mol	Type	Chain	Res	Chirality	Geometry	Clashes	Electron density
3	SO4	B	704	-	-	-	X
6	GOL	B	707	-	-	-	X
7	AMP	A	505	-	-	-	X
7	AMP	C	506	-	-	-	X

2 Entry composition

There are 8 unique types of molecules in this entry. The entry contains 9156 atoms, of which 0 are hydrogens and 0 are deuteriums.

In the tables below, the ZeroOcc column contains the number of atoms modelled with zero occupancy, the AltConf column contains the number of residues with at least one atom in alternate conformation and the Trace column contains the number of residues modelled with at most 2 atoms.

- Molecule 1 is a protein called Signal recognition particle 54 kDa protein.

Mol	Chain	Residues	Atoms					ZeroOcc	AltConf	Trace
			Total	C	N	O	S			
1	A	265	2050	1308	345	386	11	0	0	0
1	C	265	2050	1308	345	386	11	0	0	0

There are 12 discrepancies between the modelled and reference sequences:

Chain	Residue	Modelled	Actual	Comment	Reference
A	-5	HIS	-	expression tag	UNP P61011
A	-4	HIS	-	expression tag	UNP P61011
A	-3	HIS	-	expression tag	UNP P61011
A	-2	HIS	-	expression tag	UNP P61011
A	-1	HIS	-	expression tag	UNP P61011
A	0	HIS	-	expression tag	UNP P61011
C	-5	HIS	-	expression tag	UNP P61011
C	-4	HIS	-	expression tag	UNP P61011
C	-3	HIS	-	expression tag	UNP P61011
C	-2	HIS	-	expression tag	UNP P61011
C	-1	HIS	-	expression tag	UNP P61011
C	0	HIS	-	expression tag	UNP P61011

- Molecule 2 is a protein called Signal recognition particle receptor subunit alpha.

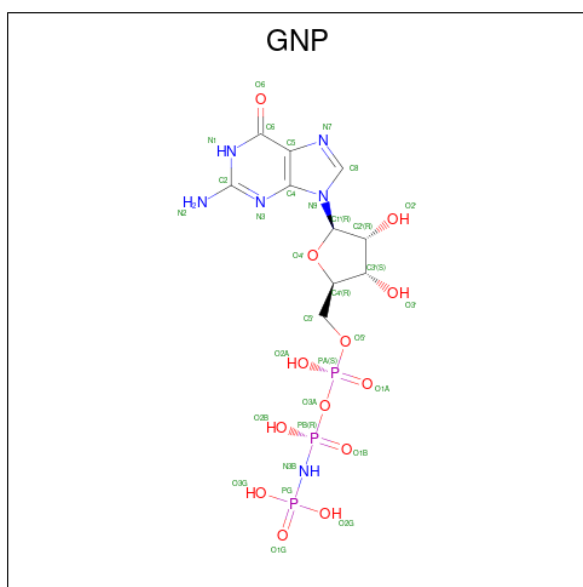
Mol	Chain	Residues	Atoms					ZeroOcc	AltConf	Trace
			Total	C	N	O	S			
2	B	307	2340	1471	415	438	16	0	0	0
2	D	307	2340	1471	415	438	16	0	0	0

- Molecule 3 is SULFATE ION (three-letter code: SO4) (formula: O₄S).



Mol	Chain	Residues	Atoms			ZeroOcc	AltConf
3	A	1	Total	O	S	0	0
			5	4	1		
3	B	1	Total	O	S	0	0
			5	4	1		
3	B	1	Total	O	S	0	0
			5	4	1		
3	B	1	Total	O	S	0	0
			5	4	1		
3	B	1	Total	O	S	0	0
			5	4	1		
3	C	1	Total	O	S	0	0
			5	4	1		
3	C	1	Total	O	S	0	0
			5	4	1		
3	D	1	Total	O	S	0	0
			5	4	1		
3	D	1	Total	O	S	0	0
			5	4	1		

- Molecule 4 is PHOSPHOAMINOPHOSPHONIC ACID-GUANYLATE ESTER (three-letter code: GNP) (formula: C₁₀H₁₇N₆O₁₃P₃).



Mol	Chain	Residues	Atoms					ZeroOcc	AltConf
			Total	C	N	O	P		
4	A	1	32	10	6	13	3	0	0
4	B	1	32	10	6	13	3	0	0
4	C	1	32	10	6	13	3	0	0
4	D	1	32	10	6	13	3	0	0

- Molecule 5 is MAGNESIUM ION (three-letter code: MG) (formula: Mg).

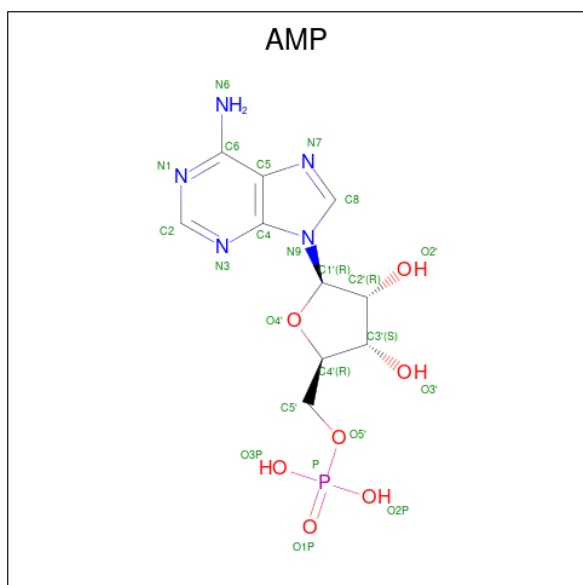
Mol	Chain	Residues	Atoms		ZeroOcc	AltConf
			Total	Mg		
5	A	1	1	1	0	0
5	B	1	1	1	0	0
5	C	1	1	1	0	0
5	D	1	1	1	0	0

- Molecule 6 is GLYCEROL (three-letter code: GOL) (formula: C₃H₈O₃).



Mol	Chain	Residues	Atoms			ZeroOcc	AltConf
6	A	1	Total	C	O	0	0
			6	3	3		
6	B	1	Total	C	O	0	0
			6	3	3		
6	C	1	Total	C	O	0	0
			6	3	3		
6	D	1	Total	C	O	0	0
			6	3	3		

- Molecule 7 is ADENOSINE MONOPHOSPHATE (three-letter code: AMP) (formula: C₁₀H₁₄N₅O₇P).



Mol	Chain	Residues	Atoms					ZeroOcc	AltConf
7	A	1	Total	C	N	O	P	0	0
			23	10	5	7	1		
7	C	1	Total	C	N	O	P	0	0
			23	10	5	7	1		

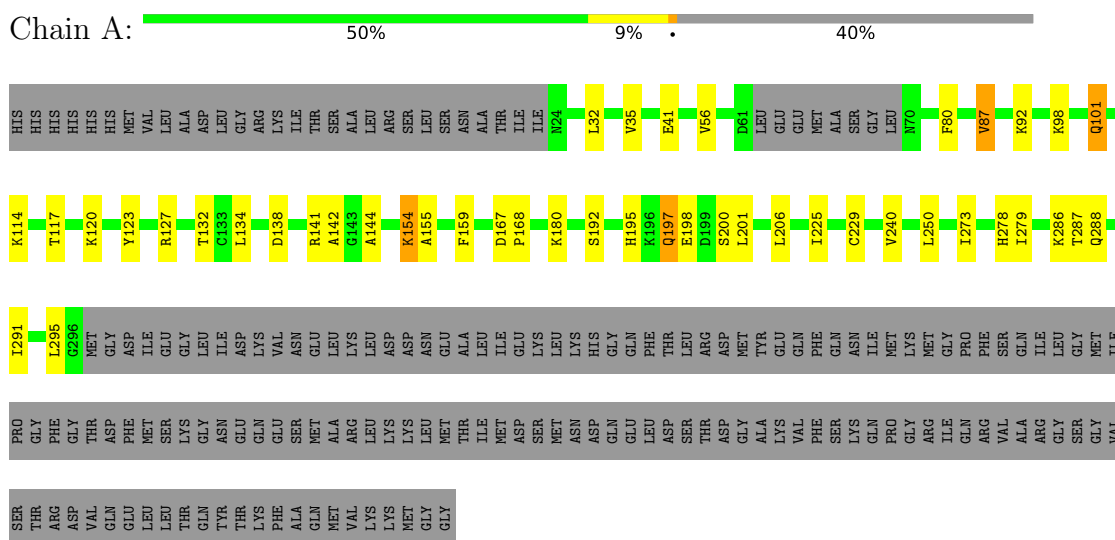
- Molecule 8 is water.

Mol	Chain	Residues	Atoms		ZeroOcc	AltConf
8	A	31	Total	O	0	0
			31	31		
8	B	42	Total	O	0	0
			42	42		
8	C	20	Total	O	0	0
			20	20		
8	D	36	Total	O	0	0
			36	36		

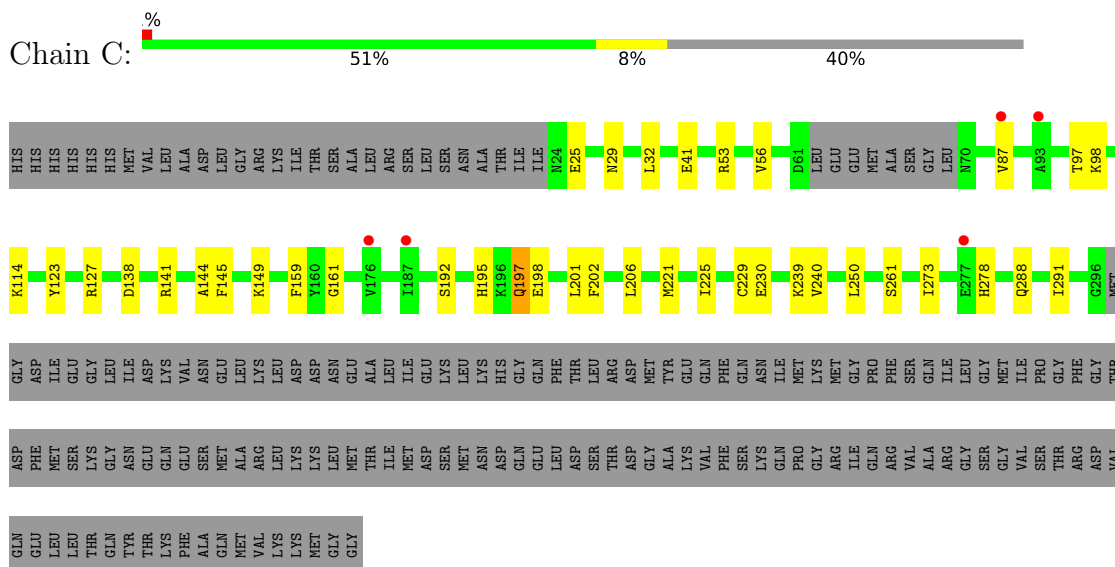
3 Residue-property plots [i](#)

These plots are drawn for all protein, RNA, DNA and oligosaccharide chains in the entry. The first graphic for a chain summarises the proportions of the various outlier classes displayed in the second graphic. The second graphic shows the sequence view annotated by issues in geometry and electron density. Residues are color-coded according to the number of geometric quality criteria for which they contain at least one outlier: green = 0, yellow = 1, orange = 2 and red = 3 or more. A red dot above a residue indicates a poor fit to the electron density ($RSRZ > 2$). Stretches of 2 or more consecutive residues without any outlier are shown as a green connector. Residues present in the sample, but not in the model, are shown in grey.

- Molecule 1: Signal recognition particle 54 kDa protein



- Molecule 1: Signal recognition particle 54 kDa protein



- Molecule 2: Signal recognition particle receptor subunit alpha

4 Data and refinement statistics i

Property	Value	Source
Space group	I 2 3	Depositor
Cell constants a, b, c, α , β , γ	241.39Å 241.39Å 241.39Å 90.00° 90.00° 90.00°	Depositor
Resolution (Å)	76.33 – 3.20 98.55 – 3.20	Depositor EDS
% Data completeness (in resolution range)	99.7 (76.33-3.20) 95.9 (98.55-3.20)	Depositor EDS
R_{merge}	(Not available)	Depositor
R_{sym}	0.11	Depositor
$\langle I/\sigma(I) \rangle$ ¹	2.05 (at 3.19Å)	Xtrriage
Refinement program	PHENIX 1.8.1_1168	Depositor
R, R_{free}	0.145 , 0.191 0.151 , 0.146	Depositor DCC
R_{free} test set	1931 reflections (5.00%)	wwPDB-VP
Wilson B-factor (Å ²)	56.9	Xtrriage
Anisotropy	0.000	Xtrriage
Bulk solvent k_{sol} (e/Å ³), B_{sol} (Å ²)	0.31 , 47.9	EDS
L-test for twinning ²	$\langle L \rangle = 0.48$, $\langle L^2 \rangle = 0.31$	Xtrriage
Estimated twinning fraction	0.029 for -l,-k,-h	Xtrriage
F_o, F_c correlation	0.91	EDS
Total number of atoms	9156	wwPDB-VP
Average B, all atoms (Å ²)	62.0	wwPDB-VP

Xtrriage's analysis on translational NCS is as follows: *The largest off-origin peak in the Patterson function is 2.16% of the height of the origin peak. No significant pseudotranslation is detected.*

¹Intensities estimated from amplitudes.

²Theoretical values of $\langle |L| \rangle$, $\langle L^2 \rangle$ for acentric reflections are 0.5, 0.333 respectively for untwinned datasets, and 0.375, 0.2 for perfectly twinned datasets.

5 Model quality [i](#)

5.1 Standard geometry [i](#)

Bond lengths and bond angles in the following residue types are not validated in this section: MG, AMP, GNP, SO4, GOL

The Z score for a bond length (or angle) is the number of standard deviations the observed value is removed from the expected value. A bond length (or angle) with $|Z| > 5$ is considered an outlier worth inspection. RMSZ is the root-mean-square of all Z scores of the bond lengths (or angles).

Mol	Chain	Bond lengths		Bond angles	
		RMSZ	# Z >5	RMSZ	# Z >5
1	A	0.46	0/2083	0.58	0/2806
1	C	0.40	0/2083	0.56	0/2806
2	B	0.51	0/2370	0.64	0/3202
2	D	0.49	0/2370	0.65	0/3202
All	All	0.47	0/8906	0.61	0/12016

There are no bond length outliers.

There are no bond angle outliers.

There are no chirality outliers.

There are no planarity outliers.

5.2 Too-close contacts [i](#)

In the following table, the Non-H and H(model) columns list the number of non-hydrogen atoms and hydrogen atoms in the chain respectively. The H(added) column lists the number of hydrogen atoms added and optimized by MolProbity. The Clashes column lists the number of clashes within the asymmetric unit, whereas Symm-Clashes lists symmetry-related clashes.

Mol	Chain	Non-H	H(model)	H(added)	Clashes	Symm-Clashes
1	A	2050	0	2090	30	0
1	C	2050	0	2090	21	0
2	B	2340	0	2406	42	0
2	D	2340	0	2406	37	0
3	A	5	0	0	1	0
3	B	20	0	0	1	0
3	C	10	0	0	0	0
3	D	10	0	0	0	0
4	A	32	0	13	1	0

Continued on next page...

Continued from previous page...

Mol	Chain	Non-H	H(model)	H(added)	Clashes	Symm-Clashes
4	B	32	0	13	0	0
4	C	32	0	13	1	0
4	D	32	0	13	0	0
5	A	1	0	0	0	0
5	B	1	0	0	0	0
5	C	1	0	0	0	0
5	D	1	0	0	0	0
6	A	6	0	8	2	0
6	B	6	0	8	0	0
6	C	6	0	8	0	0
6	D	6	0	8	2	0
7	A	23	0	12	2	0
7	C	23	0	12	2	0
8	A	31	0	0	0	0
8	B	42	0	0	3	0
8	C	20	0	0	1	0
8	D	36	0	0	3	0
All	All	9156	0	9100	128	0

The all-atom clashscore is defined as the number of clashes found per 1000 atoms (including hydrogen atoms). The all-atom clashscore for this structure is 7.

All (128) close contacts within the same asymmetric unit are listed below, sorted by their clash magnitude.

Atom-1	Atom-2	Interatomic distance (Å)	Clash overlap (Å)
2:B:491:GLU:HG2	2:B:493:GLY:H	1.43	0.83
1:C:198:GLU:HG2	1:C:201:LEU:HG	1.67	0.76
1:A:278:HIS:CE1	7:A:505:AMP:H2'	2.28	0.69
2:D:459:ALA:H	6:D:705:GOL:H12	1.59	0.68
2:D:491:GLU:HG2	2:D:493:GLY:H	1.60	0.67
2:B:473:SER:HB3	2:B:487:VAL:HG23	1.77	0.67
2:B:411:ASP:OD1	2:B:414:ARG:NH1	2.29	0.65
1:A:287:THR:H	6:A:504:GOL:H32	1.63	0.63
1:A:278:HIS:NE2	7:A:505:AMP:H2'	2.12	0.63
1:C:29:ASN:OD1	1:C:53:ARG:NH2	2.32	0.62
1:A:155:ALA:HB2	1:A:279:ILE:HD13	1.82	0.62
1:C:195:HIS:HD2	1:C:197:GLN:HG2	1.62	0.62
1:C:195:HIS:CD2	1:C:197:GLN:HG2	2.35	0.61
2:D:580:ARG:NH2	2:D:583:ASP:OD2	2.33	0.61
2:D:560:VAL:HG13	2:D:606:ILE:HD12	1.83	0.59
2:B:397:LEU:HD22	2:B:626:LEU:HD21	1.83	0.59

Continued on next page...

Continued from previous page...

Atom-1	Atom-2	Interatomic distance (Å)	Clash overlap (Å)
1:C:87:VAL:HG21	1:C:291:ILE:HD11	1.86	0.57
2:B:549:PHE:HB2	2:B:582:ILE:HD13	1.87	0.57
2:B:497:ASP:N	3:B:702:SO4:O1	2.26	0.57
1:A:225:ILE:HG12	1:A:229:CYS:HB2	1.86	0.56
1:A:195:HIS:CD2	1:A:197:GLN:HG2	2.41	0.56
1:C:123:TYR:CZ	1:C:127:ARG:HD2	2.41	0.56
1:A:198:GLU:HG2	1:A:201:LEU:HG	1.89	0.55
1:C:230:GLU:HB2	1:C:261:SER:HB3	1.88	0.55
2:D:397:LEU:HD12	2:D:632:VAL:HG23	1.89	0.54
2:B:338:MET:HB3	2:B:342:LEU:HD22	1.88	0.54
1:C:145:PHE:CE1	1:C:161:GLY:HA3	2.43	0.54
1:C:225:ILE:HG12	1:C:229:CYS:HB2	1.89	0.54
2:D:358:ILE:HD12	2:D:605:TYR:CD2	2.43	0.54
1:A:142:ALA:O	2:B:464:GLN:HG3	2.08	0.54
1:C:250:LEU:HD12	1:C:273:ILE:HB	1.89	0.53
2:D:335:ARG:NH2	2:D:368:ASN:OD1	2.41	0.53
2:D:396:ILE:HD13	2:D:605:TYR:HD1	1.74	0.53
2:B:381:VAL:O	2:B:385:VAL:HG13	2.09	0.53
2:B:593:ILE:HD13	2:B:597:VAL:HA	1.90	0.52
2:B:423:PHE:CD1	2:B:435:LEU:HD12	2.44	0.52
2:D:596:LYS:HE2	8:D:834:HOH:O	2.11	0.51
2:B:595:ASP:OD2	2:B:595:ASP:N	2.43	0.51
2:B:508:PHE:CZ	2:B:512:GLN:HG3	2.46	0.51
1:A:32:LEU:HD11	1:A:56:VAL:HG11	1.92	0.50
1:A:123:TYR:CZ	1:A:127:ARG:HD2	2.46	0.50
1:A:154:LYS:HE2	3:A:501:SO4:O4	2.10	0.50
1:A:250:LEU:HD12	1:A:273:ILE:HB	1.94	0.50
2:B:418:PRO:HD3	2:B:510:ARG:HG3	1.94	0.49
2:B:396:ILE:HD13	2:B:605:TYR:HD1	1.77	0.49
2:B:338:MET:O	2:B:342:LEU:HB2	2.12	0.49
1:C:138:ASP:OD2	8:C:601:HOH:O	2.20	0.49
2:B:563:LEU:HD13	2:B:607:THR:HG23	1.95	0.49
2:D:590:PHE:CZ	2:D:597:VAL:HG23	2.48	0.49
2:D:393:LEU:HD22	2:D:601:ILE:HG12	1.95	0.48
2:B:335:ARG:NH2	2:B:368:ASN:OD1	2.46	0.47
1:A:195:HIS:HD2	1:A:197:GLN:HG2	1.76	0.47
1:C:278:HIS:CE1	7:C:506:AMP:H2'	2.49	0.47
1:C:141:ARG:HB3	1:C:144:ALA:HB2	1.96	0.47
2:D:381:VAL:O	2:D:385:VAL:HG13	2.14	0.47
2:D:411:ASP:OD1	2:D:414:ARG:NH1	2.48	0.47
2:D:471:ARG:HH11	2:D:471:ARG:HG3	1.80	0.47

Continued on next page...

Continued from previous page...

Atom-1	Atom-2	Interatomic distance (Å)	Clash overlap (Å)
1:A:198:GLU:HG2	1:A:201:LEU:CG	2.45	0.47
1:C:202:PHE:HB3	1:C:239:LYS:HE3	1.96	0.47
2:D:580:ARG:CZ	2:D:580:ARG:HB3	2.45	0.46
1:A:286:LYS:HA	6:A:504:GOL:H32	1.96	0.46
2:D:563:LEU:HD22	2:D:607:THR:HG21	1.98	0.46
2:B:496:LYS:HB2	2:B:501:ILE:HD11	1.97	0.45
2:D:529:ALA:HB3	2:D:530:PRO:HD3	1.97	0.45
2:D:459:ALA:N	6:D:705:GOL:H12	2.29	0.45
1:A:87:VAL:HG21	1:A:291:ILE:HD11	1.97	0.45
2:D:637:LYS:HG3	2:D:638:ALA:N	2.31	0.45
2:B:401:ARG:H	2:B:401:ARG:HG2	1.62	0.45
2:D:348:HIS:NE2	2:D:638:ALA:HB2	2.32	0.45
2:D:577:GLN:HG2	8:D:827:HOH:O	2.17	0.45
2:B:529:ALA:HB3	2:B:530:PRO:HD3	1.98	0.45
1:A:134:LEU:O	1:A:159:PHE:HA	2.17	0.45
2:B:358:ILE:HG22	2:B:362:LEU:HD22	1.99	0.45
2:D:394:VAL:O	2:D:398:GLN:HG2	2.17	0.45
1:A:197:GLN:HE21	1:A:197:GLN:HB3	1.64	0.44
2:B:406:LEU:HD22	2:B:447:PHE:HE1	1.82	0.44
1:A:138:ASP:OD1	1:A:192:SER:HB3	2.18	0.44
2:B:426:VAL:HG22	8:B:818:HOH:O	2.17	0.44
1:C:32:LEU:HD11	1:C:56:VAL:HG11	1.99	0.44
1:A:198:GLU:HG3	1:A:201:LEU:H	1.83	0.44
2:B:500:GLY:O	2:B:504:GLU:HG3	2.17	0.44
2:D:619:THR:HG22	2:D:620:TYR:N	2.33	0.44
2:B:341:VAL:HG21	2:B:382:THR:HA	2.00	0.43
2:B:394:VAL:O	2:B:398:GLN:HG2	2.18	0.43
1:A:295:LEU:HD12	1:A:295:LEU:HA	1.85	0.43
2:B:358:ILE:O	2:B:362:LEU:HB2	2.18	0.43
2:B:585:ILE:HD13	2:B:603:MET:HB3	2.01	0.43
1:C:149:LYS:HG3	1:C:159:PHE:CZ	2.53	0.43
1:A:114:LYS:NZ	4:A:502:GNP:O2B	2.51	0.42
1:A:141:ARG:HB3	1:A:144:ALA:HB2	2.00	0.42
2:B:456:THR:HG21	2:B:501:ILE:HD12	2.01	0.42
1:A:138:ASP:CG	1:A:192:SER:HB3	2.39	0.42
2:B:349:LEU:HD11	2:B:389:LEU:HD21	2.00	0.42
2:B:466:ARG:NH1	8:B:801:HOH:O	2.34	0.42
2:D:471:ARG:NH1	8:D:806:HOH:O	2.52	0.42
1:A:117:THR:HA	1:A:120:LYS:HB2	2.01	0.42
2:D:454:CYS:HB2	2:D:520:ASP:O	2.19	0.42
2:D:397:LEU:HD23	2:D:397:LEU:HA	1.92	0.42

Continued on next page...

Continued from previous page...

Atom-1	Atom-2	Interatomic distance (Å)	Clash overlap (Å)
2:D:619:THR:HG22	2:D:621:CYS:H	1.84	0.42
2:B:393:LEU:HD22	2:B:601:ILE:HG12	2.01	0.42
2:B:426:VAL:HA	2:B:524:ARG:O	2.20	0.42
2:B:431:LYS:HE2	8:B:805:HOH:O	2.19	0.42
1:A:114:LYS:HE2	1:A:114:LYS:HB2	1.93	0.42
2:B:563:LEU:HD22	2:B:607:THR:HG21	2.01	0.42
2:D:342:LEU:HD21	2:D:367:ALA:HB2	2.02	0.42
2:D:585:ILE:HD13	2:D:603:MET:HB3	2.02	0.42
2:B:368:ASN:O	2:D:414:ARG:NH2	2.53	0.42
2:D:336:GLU:H	2:D:336:GLU:HG3	1.66	0.42
1:A:123:TYR:OH	1:A:127:ARG:HD2	2.20	0.41
1:C:25:GLU:O	1:C:29:ASN:ND2	2.43	0.41
2:B:336:GLU:H	2:B:336:GLU:HG3	1.63	0.41
2:D:443:LEU:HD23	2:D:447:PHE:O	2.20	0.41
2:D:595:ASP:OD2	2:D:637:LYS:HE2	2.20	0.41
1:A:101:GLN:OE1	1:A:180:LYS:HB2	2.20	0.41
1:C:138:ASP:OD1	1:C:192:SER:HB3	2.21	0.41
1:C:278:HIS:NE2	7:C:506:AMP:H2'	2.36	0.41
1:A:167:ASP:HA	1:A:168:PRO:HD2	1.89	0.41
2:D:423:PHE:CD1	2:D:435:LEU:HD12	2.56	0.41
2:B:358:ILE:HD12	2:B:605:TYR:CD2	2.56	0.41
2:B:397:LEU:HD12	2:B:632:VAL:HG23	2.02	0.41
2:B:570:LEU:HD23	2:B:570:LEU:HA	1.89	0.41
1:C:114:LYS:NZ	4:C:503:GNP:O2B	2.40	0.41
2:D:481:HIS:CG	2:D:486:MET:HG3	2.56	0.41
2:D:593:ILE:H	2:D:593:ILE:HG13	1.78	0.40
2:B:352:LYS:NZ	2:B:638:ALA:HB2	2.36	0.40
2:D:491:GLU:HG2	2:D:492:LYS:N	2.31	0.40
1:A:80:PHE:HE2	1:A:288:GLN:HE21	1.69	0.40
1:C:149:LYS:HG3	1:C:159:PHE:CE2	2.56	0.40

There are no symmetry-related clashes.

5.3 Torsion angles [i](#)

5.3.1 Protein backbone [i](#)

In the following table, the Percentiles column shows the percent Ramachandran outliers of the chain as a percentile score with respect to all X-ray entries followed by that with respect to entries of similar resolution.

The Analysed column shows the number of residues for which the backbone conformation was analysed, and the total number of residues.

Mol	Chain	Analysed	Favoured	Allowed	Outliers	Percentiles	
1	A	261/442 (59%)	259 (99%)	2 (1%)	0	100	100
1	C	261/442 (59%)	260 (100%)	1 (0%)	0	100	100
2	B	305/638 (48%)	293 (96%)	12 (4%)	0	100	100
2	D	305/638 (48%)	293 (96%)	12 (4%)	0	100	100
All	All	1132/2160 (52%)	1105 (98%)	27 (2%)	0	100	100

There are no Ramachandran outliers to report.

5.3.2 Protein sidechains [i](#)

In the following table, the Percentiles column shows the percent sidechain outliers of the chain as a percentile score with respect to all X-ray entries followed by that with respect to entries of similar resolution.

The Analysed column shows the number of residues for which the sidechain conformation was analysed, and the total number of residues.

Mol	Chain	Analysed	Rotameric	Outliers	Percentiles	
1	A	221/373 (59%)	209 (95%)	12 (5%)	22	58
1	C	221/373 (59%)	213 (96%)	8 (4%)	35	69
2	B	252/533 (47%)	240 (95%)	12 (5%)	25	61
2	D	252/533 (47%)	240 (95%)	12 (5%)	25	61
All	All	946/1812 (52%)	902 (95%)	44 (5%)	26	62

All (44) residues with a non-rotameric sidechain are listed below:

Mol	Chain	Res	Type
1	A	35	VAL
1	A	41	GLU
1	A	87	VAL
1	A	92	LYS
1	A	98	LYS
1	A	101	GLN
1	A	132	THR
1	A	154	LYS
1	A	197	GLN
1	A	200	SER

Continued on next page...

Continued from previous page...

Mol	Chain	Res	Type
1	A	206	LEU
1	A	240	VAL
2	B	341	VAL
2	B	342	LEU
2	B	362	LEU
2	B	401	ARG
2	B	402	ARG
2	B	449	VAL
2	B	487	VAL
2	B	491	GLU
2	B	510	ARG
2	B	555	VAL
2	B	595	ASP
2	B	606	ILE
1	C	41	GLU
1	C	97	THR
1	C	98	LYS
1	C	197	GLN
1	C	206	LEU
1	C	221	MET
1	C	240	VAL
1	C	288	GLN
2	D	341	VAL
2	D	342	LEU
2	D	362	LEU
2	D	385	VAL
2	D	449	VAL
2	D	466	ARG
2	D	487	VAL
2	D	491	GLU
2	D	575	MET
2	D	580	ARG
2	D	606	ILE
2	D	637	LYS

Sometimes sidechains can be flipped to improve hydrogen bonding and reduce clashes. There are no such sidechains identified.

5.3.3 RNA

There are no RNA molecules in this entry.

5.4 Non-standard residues in protein, DNA, RNA chains [i](#)

There are no non-standard protein/DNA/RNA residues in this entry.

5.5 Carbohydrates [i](#)

There are no monosaccharides in this entry.

5.6 Ligand geometry [i](#)

Of 23 ligands modelled in this entry, 4 are monoatomic - leaving 19 for Mogul analysis.

In the following table, the Counts columns list the number of bonds (or angles) for which Mogul statistics could be retrieved, the number of bonds (or angles) that are observed in the model and the number of bonds (or angles) that are defined in the Chemical Component Dictionary. The Link column lists molecule types, if any, to which the group is linked. The Z score for a bond length (or angle) is the number of standard deviations the observed value is removed from the expected value. A bond length (or angle) with $|Z| > 2$ is considered an outlier worth inspection. RMSZ is the root-mean-square of all Z scores of the bond lengths (or angles).

Mol	Type	Chain	Res	Link	Bond lengths			Bond angles		
					Counts	RMSZ	# Z > 2	Counts	RMSZ	# Z > 2
3	SO4	B	702	-	4,4,4	0.13	0	6,6,6	0.17	0
4	GNP	D	703	5	29,34,34	1.73	7 (24%)	33,54,54	2.30	10 (30%)
3	SO4	B	701	-	4,4,4	0.12	0	6,6,6	0.17	0
4	GNP	A	502	5	29,34,34	1.65	6 (20%)	33,54,54	2.63	11 (33%)
3	SO4	B	704	-	4,4,4	0.14	0	6,6,6	0.15	0
7	AMP	A	505	-	22,25,25	0.93	1 (4%)	25,38,38	1.26	3 (12%)
4	GNP	C	503	5	29,34,34	1.78	6 (20%)	33,54,54	2.48	9 (27%)
3	SO4	B	703	-	4,4,4	0.18	0	6,6,6	0.17	0
3	SO4	D	702	-	4,4,4	0.14	0	6,6,6	0.11	0
6	GOL	C	505	-	5,5,5	0.39	0	5,5,5	0.23	0
3	SO4	D	701	-	4,4,4	0.12	0	6,6,6	0.19	0
6	GOL	A	504	-	5,5,5	0.42	0	5,5,5	0.59	0
3	SO4	A	501	-	4,4,4	0.13	0	6,6,6	0.22	0
6	GOL	B	707	-	5,5,5	0.31	0	5,5,5	0.76	0
3	SO4	C	502	-	4,4,4	0.13	0	6,6,6	0.20	0
6	GOL	D	705	-	5,5,5	0.35	0	5,5,5	0.41	0
7	AMP	C	506	-	22,25,25	0.98	1 (4%)	25,38,38	1.41	3 (12%)
3	SO4	C	501	-	4,4,4	0.15	0	6,6,6	0.15	0
4	GNP	B	705	5	29,34,34	1.60	5 (17%)	33,54,54	2.37	9 (27%)

In the following table, the Chirals column lists the number of chiral outliers, the number of chiral

centers analysed, the number of these observed in the model and the number defined in the Chemical Component Dictionary. Similar counts are reported in the Torsion and Rings columns. '2' means no outliers of that kind were identified.

Mol	Type	Chain	Res	Link	Chirals	Torsions	Rings
6	GOL	B	707	-	-	2/4/4/4	-
4	GNP	A	502	5	-	1/14/38/38	0/3/3/3
6	GOL	D	705	-	-	3/4/4/4	-
4	GNP	C	503	5	-	5/14/38/38	0/3/3/3
7	AMP	C	506	-	-	2/6/26/26	0/3/3/3
4	GNP	D	703	5	-	2/14/38/38	0/3/3/3
6	GOL	C	505	-	-	0/4/4/4	-
7	AMP	A	505	-	-	2/6/26/26	0/3/3/3
4	GNP	B	705	5	-	7/14/38/38	0/3/3/3
6	GOL	A	504	-	-	3/4/4/4	-

All (26) bond length outliers are listed below:

Mol	Chain	Res	Type	Atoms	Z	Observed(Å)	Ideal(Å)
4	C	503	GNP	PB-O3A	-5.18	1.52	1.59
4	D	703	GNP	PB-O3A	-4.57	1.53	1.59
4	A	502	GNP	C6-N1	4.15	1.40	1.33
4	A	502	GNP	PB-O3A	-3.95	1.54	1.59
4	B	705	GNP	PB-O3A	-3.89	1.54	1.59
4	C	503	GNP	C6-N1	3.78	1.39	1.33
4	D	703	GNP	C6-N1	3.56	1.39	1.33
4	C	503	GNP	PG-O1G	3.54	1.51	1.46
4	B	705	GNP	C6-N1	3.53	1.39	1.33
4	A	502	GNP	PG-O1G	3.46	1.51	1.46
4	D	703	GNP	PB-O2B	-3.33	1.47	1.56
4	C	503	GNP	PB-O2B	-3.32	1.47	1.56
4	D	703	GNP	PG-O1G	3.32	1.51	1.46
4	B	705	GNP	PB-O2B	-3.09	1.48	1.56
4	A	502	GNP	PB-O2B	-3.09	1.48	1.56
4	B	705	GNP	PG-O1G	3.03	1.51	1.46
7	C	506	AMP	C5-C4	2.85	1.48	1.40
7	A	505	AMP	C5-C4	2.61	1.47	1.40
4	B	705	GNP	PG-O3G	-2.29	1.50	1.56
4	A	502	GNP	C8-N7	-2.19	1.30	1.34
4	D	703	GNP	PG-O3G	-2.13	1.51	1.56
4	C	503	GNP	PG-O2G	-2.09	1.51	1.56
4	C	503	GNP	C8-N7	-2.09	1.31	1.34
4	A	502	GNP	PG-O3G	-2.04	1.51	1.56

Continued on next page...

Continued from previous page...

Mol	Chain	Res	Type	Atoms	Z	Observed(Å)	Ideal(Å)
4	D	703	GNP	PG-O2G	-2.03	1.51	1.56
4	D	703	GNP	PG-N3B	-2.03	1.58	1.63

All (45) bond angle outliers are listed below:

Mol	Chain	Res	Type	Atoms	Z	Observed(°)	Ideal(°)
4	D	703	GNP	C5-C6-N1	-8.34	112.03	123.43
4	C	503	GNP	C5-C6-N1	-8.24	112.17	123.43
4	B	705	GNP	C5-C6-N1	-8.23	112.18	123.43
4	A	502	GNP	C5-C6-N1	-7.86	112.68	123.43
4	A	502	GNP	O1B-PB-N3B	-7.48	100.75	111.77
4	C	503	GNP	C2-N1-C6	6.12	125.66	115.93
4	B	705	GNP	C2-N1-C6	5.52	124.69	115.93
4	D	703	GNP	C2-N1-C6	5.43	124.55	115.93
4	A	502	GNP	C2-N1-C6	5.09	124.02	115.93
4	C	503	GNP	O1B-PB-N3B	-4.71	104.84	111.77
4	B	705	GNP	C2-N3-C4	-4.10	110.67	115.36
7	C	506	AMP	N3-C2-N1	-3.64	122.98	128.68
4	D	703	GNP	C2-N3-C4	-3.56	111.29	115.36
7	A	505	AMP	N3-C2-N1	-3.40	123.37	128.68
4	C	503	GNP	C4-C5-C6	-3.39	117.56	120.80
4	C	503	GNP	O2B-PB-O1B	3.35	116.95	109.92
4	A	502	GNP	O3G-PG-O1G	-3.32	105.11	113.45
4	B	705	GNP	O3G-PG-O1G	-3.28	105.20	113.45
4	A	502	GNP	C3'-C2'-C1'	-3.20	96.16	100.98
4	C	503	GNP	N3-C2-N1	-3.14	123.04	127.22
4	D	703	GNP	O1B-PB-N3B	-3.13	107.17	111.77
4	B	705	GNP	O2B-PB-O1B	3.08	116.39	109.92
4	C	503	GNP	C2-N3-C4	-3.02	111.91	115.36
4	C	503	GNP	PB-O3A-PA	-3.02	122.00	132.62
4	A	502	GNP	O2G-PG-O3G	2.99	115.59	107.64
4	A	502	GNP	C2-N3-C4	-2.94	111.99	115.36
7	C	506	AMP	C4-C5-N7	-2.92	106.35	109.40
4	A	502	GNP	O3A-PB-N3B	2.89	114.62	106.59
7	A	505	AMP	C4-C5-N7	-2.83	106.45	109.40
4	B	705	GNP	O2G-PG-O3G	2.79	115.07	107.64
4	D	703	GNP	O1G-PG-N3B	-2.72	107.77	111.77
4	A	502	GNP	O2B-PB-O1B	2.67	115.53	109.92
4	D	703	GNP	PB-O3A-PA	-2.62	123.38	132.62
4	D	703	GNP	O2B-PB-O1B	2.61	115.40	109.92
4	D	703	GNP	C4-C5-C6	-2.51	118.40	120.80
4	D	703	GNP	O4'-C1'-C2'	-2.49	103.29	106.93

Continued on next page...

Continued from previous page...

Mol	Chain	Res	Type	Atoms	Z	Observed(°)	Ideal(°)
4	C	503	GNP	O1G-PG-N3B	-2.44	108.17	111.77
4	A	502	GNP	N3-C2-N1	-2.40	124.02	127.22
4	A	502	GNP	O4'-C1'-C2'	-2.36	103.48	106.93
7	C	506	AMP	C2-N1-C6	2.36	122.78	118.75
4	B	705	GNP	C4-C5-C6	-2.35	118.56	120.80
4	B	705	GNP	C4-C5-N7	2.18	111.67	109.40
4	D	703	GNP	N3-C2-N1	-2.12	124.39	127.22
4	B	705	GNP	PB-O3A-PA	-2.05	125.40	132.62
7	A	505	AMP	C2-N1-C6	2.01	122.19	118.75

There are no chirality outliers.

All (27) torsion outliers are listed below:

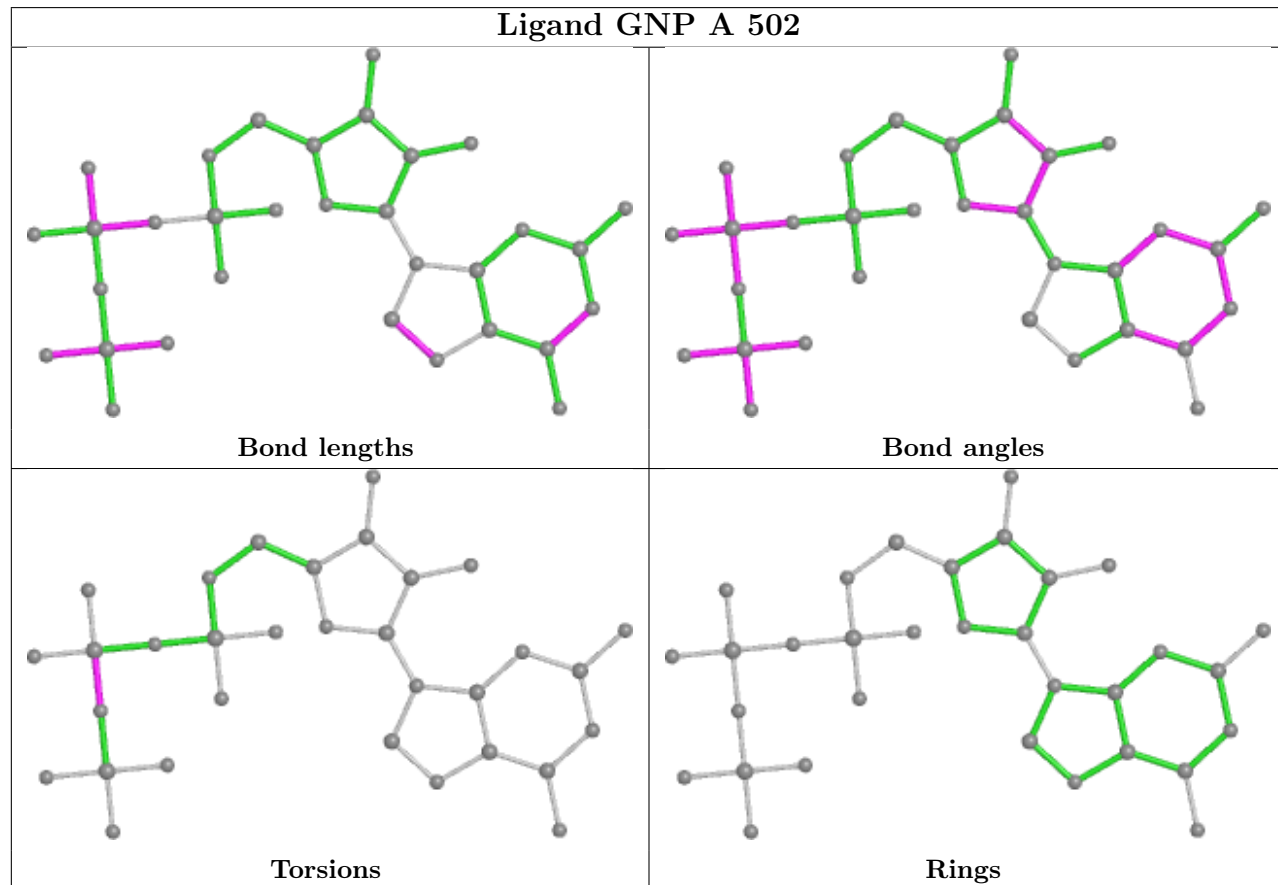
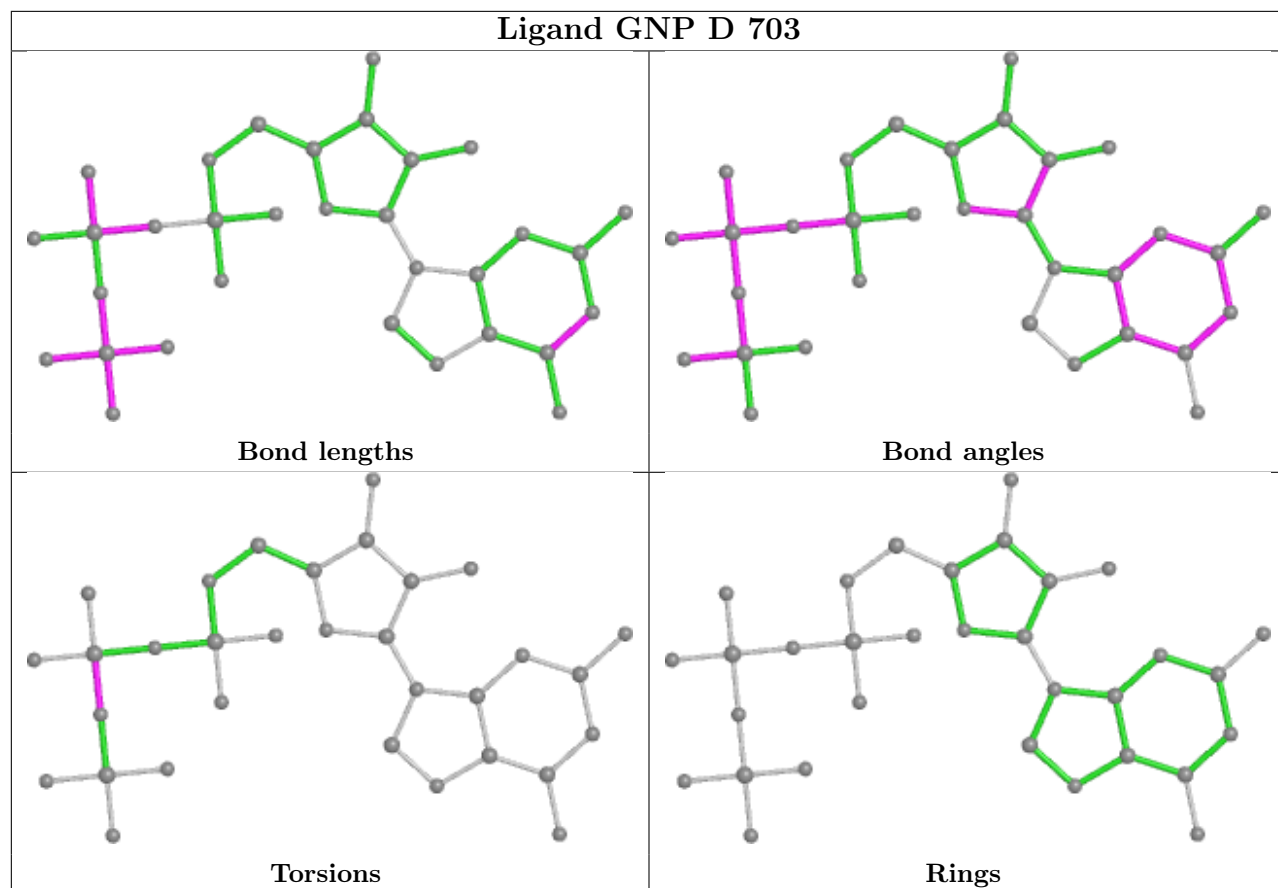
Mol	Chain	Res	Type	Atoms
4	A	502	GNP	PG-N3B-PB-O1B
4	B	705	GNP	PG-N3B-PB-O1B
4	B	705	GNP	PG-N3B-PB-O3A
4	B	705	GNP	C5'-O5'-PA-O3A
4	B	705	GNP	C5'-O5'-PA-O1A
4	B	705	GNP	C5'-O5'-PA-O2A
4	C	503	GNP	PB-N3B-PG-O1G
4	C	503	GNP	PG-N3B-PB-O1B
4	C	503	GNP	PG-N3B-PB-O3A
4	D	703	GNP	PG-N3B-PB-O1B
4	D	703	GNP	PG-N3B-PB-O3A
6	B	707	GOL	O1-C1-C2-C3
6	D	705	GOL	O1-C1-C2-C3
4	B	705	GNP	C3'-C4'-C5'-O5'
7	A	505	AMP	O4'-C4'-C5'-O5'
7	C	506	AMP	O4'-C4'-C5'-O5'
6	D	705	GOL	O1-C1-C2-O2
4	B	705	GNP	O4'-C4'-C5'-O5'
7	A	505	AMP	C3'-C4'-C5'-O5'
6	A	504	GOL	O1-C1-C2-C3
6	B	707	GOL	O1-C1-C2-O2
6	A	504	GOL	O1-C1-C2-O2
6	D	705	GOL	O2-C2-C3-O3
7	C	506	AMP	C3'-C4'-C5'-O5'
4	C	503	GNP	C3'-C4'-C5'-O5'
4	C	503	GNP	O4'-C4'-C5'-O5'
6	A	504	GOL	O2-C2-C3-O3

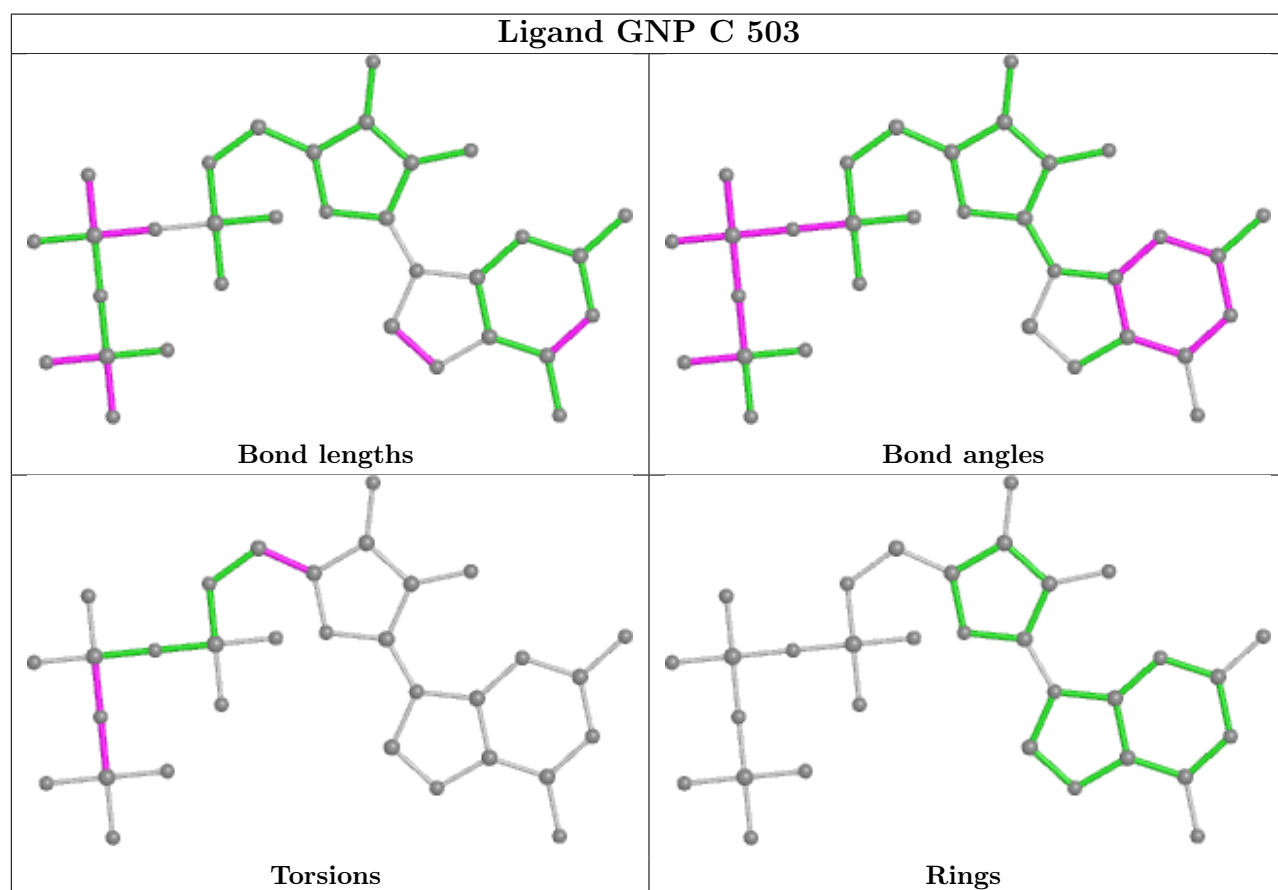
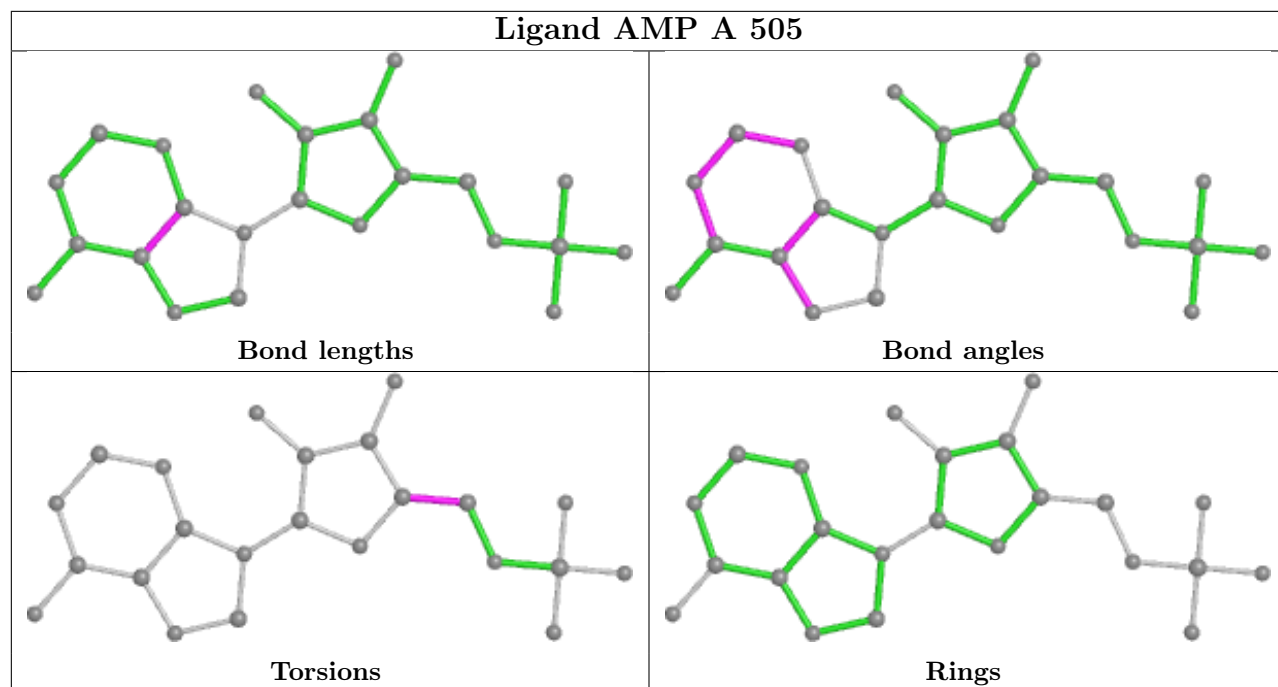
There are no ring outliers.

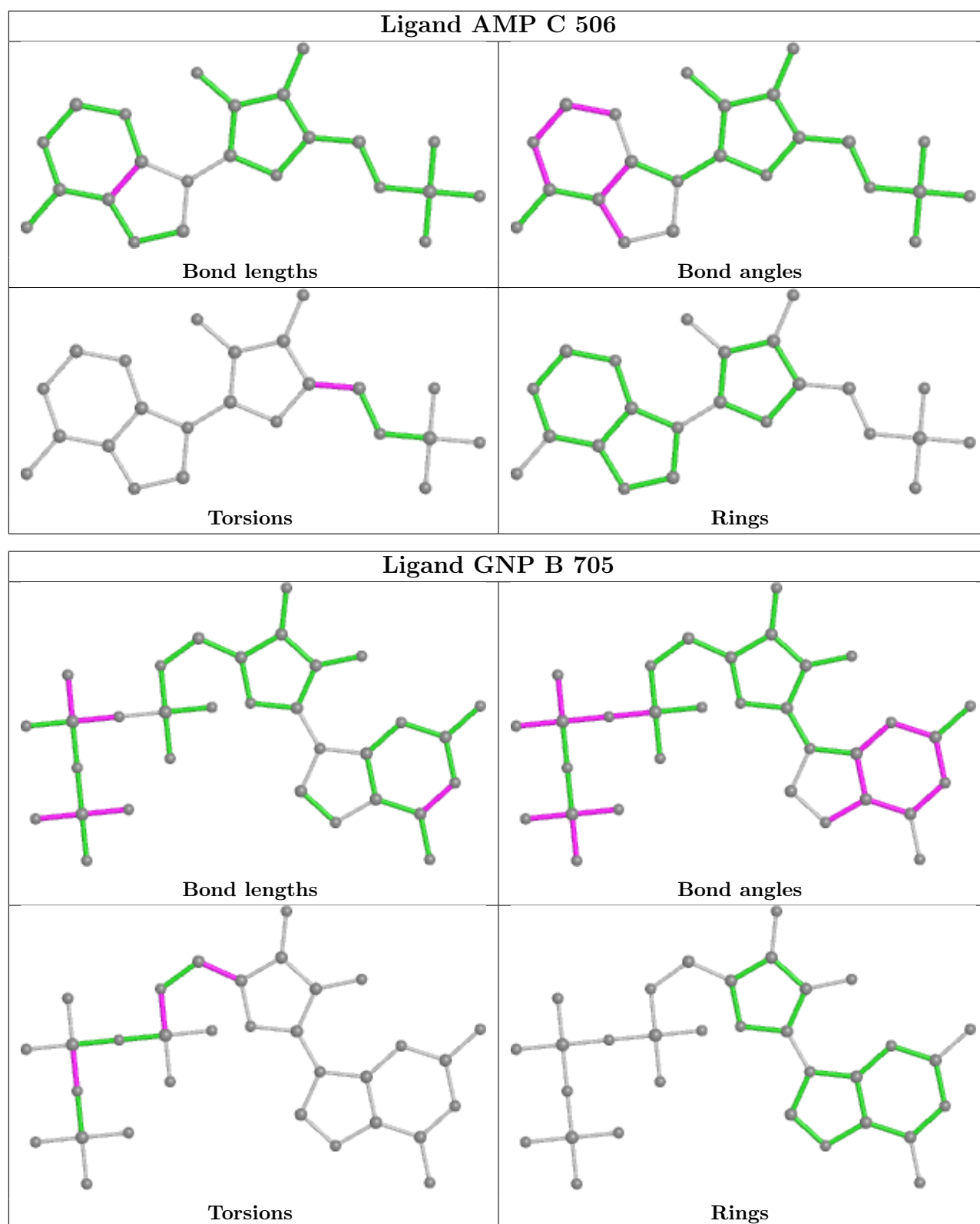
8 monomers are involved in 12 short contacts:

Mol	Chain	Res	Type	Clashes	Symm-Clashes
3	B	702	SO4	1	0
4	A	502	GNP	1	0
7	A	505	AMP	2	0
4	C	503	GNP	1	0
6	A	504	GOL	2	0
3	A	501	SO4	1	0
6	D	705	GOL	2	0
7	C	506	AMP	2	0

The following is a two-dimensional graphical depiction of Mogul quality analysis of bond lengths, bond angles, torsion angles, and ring geometry for all instances of the Ligand of Interest. In addition, ligands with molecular weight > 250 and outliers as shown on the validation Tables will also be included. For torsion angles, if less than 5% of the Mogul distribution of torsion angles is within 10 degrees of the torsion angle in question, then that torsion angle is considered an outlier. Any bond that is central to one or more torsion angles identified as an outlier by Mogul will be highlighted in the graph. For rings, the root-mean-square deviation (RMSD) between the ring in question and similar rings identified by Mogul is calculated over all ring torsion angles. If the average RMSD is greater than 60 degrees and the minimal RMSD between the ring in question and any Mogul-identified rings is also greater than 60 degrees, then that ring is considered an outlier. The outliers are highlighted in purple. The color gray indicates Mogul did not find sufficient equivalents in the CSD to analyse the geometry.







5.7 Other polymers [\(i\)](#)

There are no such residues in this entry.

5.8 Polymer linkage issues

There are no chain breaks in this entry.

6 Fit of model and data [i](#)

6.1 Protein, DNA and RNA chains [i](#)

In the following table, the column labelled ‘#RSRZ> 2’ contains the number (and percentage) of RSRZ outliers, followed by percent RSRZ outliers for the chain as percentile scores relative to all X-ray entries and entries of similar resolution. The OWAB column contains the minimum, median, 95th percentile and maximum values of the occupancy-weighted average B-factor per residue. The column labelled ‘Q< 0.9’ lists the number of (and percentage) of residues with an average occupancy less than 0.9.

Mol	Chain	Analysed	<RSRZ>	#RSRZ>2	OWAB(Å ²)	Q<0.9
1	A	265/442 (59%)	0.14	0 100 100	35, 54, 115, 151	0
1	C	265/442 (59%)	0.58	5 (1%) 66 53	49, 72, 123, 163	0
2	B	307/638 (48%)	-0.00	0 100 100	31, 49, 86, 126	0
2	D	307/638 (48%)	0.05	1 (0%) 94 92	31, 49, 91, 122	0
All	All	1144/2160 (52%)	0.18	6 (0%) 91 86	31, 55, 106, 163	0

All (6) RSRZ outliers are listed below:

Mol	Chain	Res	Type	RSRZ
1	C	176	VAL	3.1
1	C	93	ALA	2.4
2	D	332	SER	2.4
1	C	277	GLU	2.3
1	C	187	ILE	2.2
1	C	87	VAL	2.0

6.2 Non-standard residues in protein, DNA, RNA chains [i](#)

There are no non-standard protein/DNA/RNA residues in this entry.

6.3 Carbohydrates [i](#)

There are no monosaccharides in this entry.

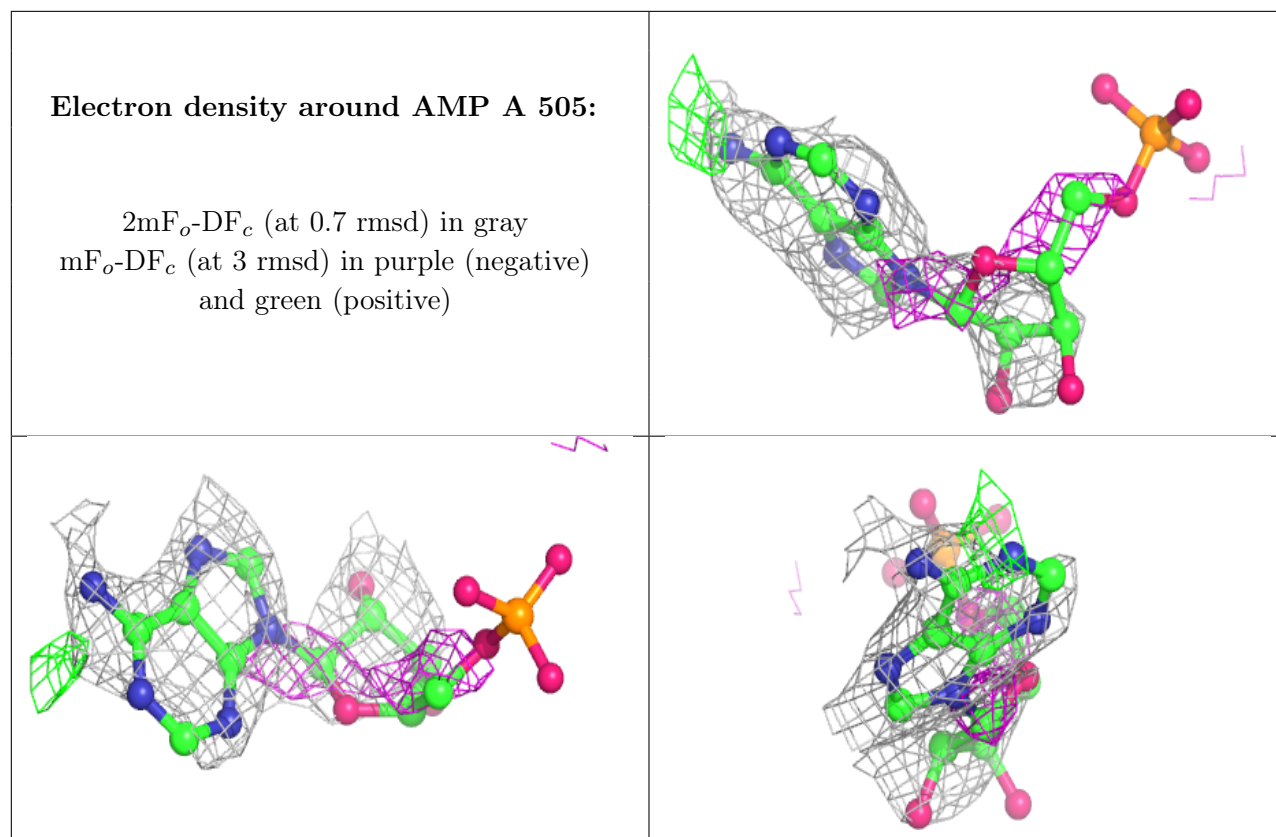
6.4 Ligands [i](#)

In the following table, the Atoms column lists the number of modelled atoms in the group and the number defined in the chemical component dictionary. The B-factors column lists the minimum,

median, 95th percentile and maximum values of B factors of atoms in the group. The column labelled 'Q<0.9' lists the number of atoms with occupancy less than 0.9.

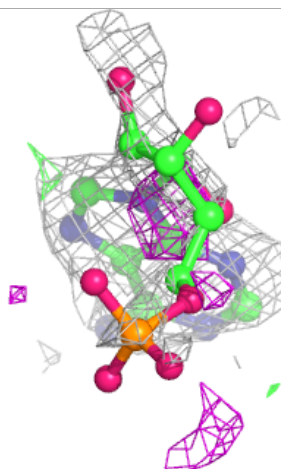
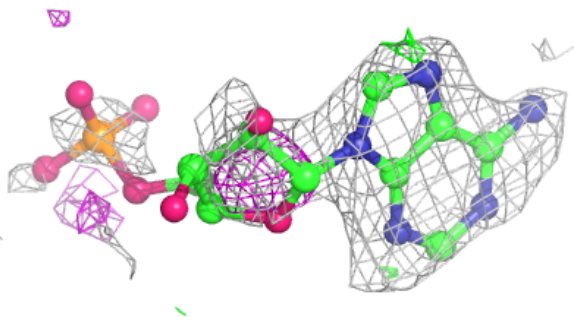
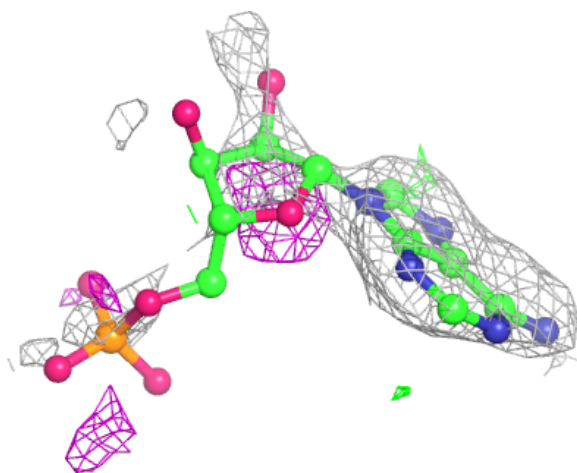
Mol	Type	Chain	Res	Atoms	RSCC	RSR	B-factors(Å ²)	Q<0.9
7	AMP	A	505	23/23	0.71	0.70	55,78,192,192	23
6	GOL	C	505	6/6	0.73	0.25	107,108,110,110	0
7	AMP	C	506	23/23	0.73	0.61	55,90,168,169	23
6	GOL	B	707	6/6	0.77	1.07	99,101,101,102	0
6	GOL	A	504	6/6	0.77	0.29	95,98,99,99	0
3	SO4	B	704	5/5	0.78	0.63	180,180,181,181	0
3	SO4	D	702	5/5	0.81	0.34	147,148,148,149	0
3	SO4	C	501	5/5	0.81	0.21	151,152,152,152	0
3	SO4	A	501	5/5	0.85	0.81	165,165,165,166	0
3	SO4	B	702	5/5	0.85	0.40	155,156,156,156	0
3	SO4	C	502	5/5	0.86	0.50	155,155,156,156	0
3	SO4	B	701	5/5	0.89	0.31	157,157,157,157	0
3	SO4	B	703	5/5	0.91	0.33	131,133,133,134	0
3	SO4	D	701	5/5	0.92	0.29	135,135,136,137	0
6	GOL	D	705	6/6	0.94	1.11	110,111,112,113	0
5	MG	D	704	1/1	0.99	0.08	24,24,24,24	0
4	GNP	A	502	32/32	0.99	0.23	27,37,43,47	0
4	GNP	B	705	32/32	0.99	0.23	26,36,42,55	0
4	GNP	C	503	32/32	0.99	0.24	33,45,49,53	0
4	GNP	D	703	32/32	0.99	0.23	22,36,42,57	0
5	MG	B	706	1/1	0.99	0.10	28,28,28,28	0
5	MG	C	504	1/1	0.99	0.08	40,40,40,40	0
5	MG	A	503	1/1	1.00	0.10	30,30,30,30	0

The following is a graphical depiction of the model fit to experimental electron density of all instances of the Ligand of Interest. In addition, ligands with molecular weight > 250 and outliers as shown on the geometry validation Tables will also be included. Each fit is shown from different orientation to approximate a three-dimensional view.



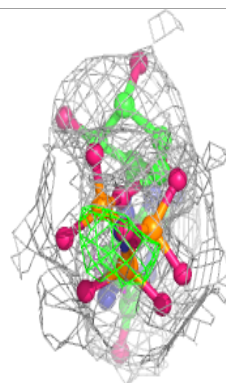
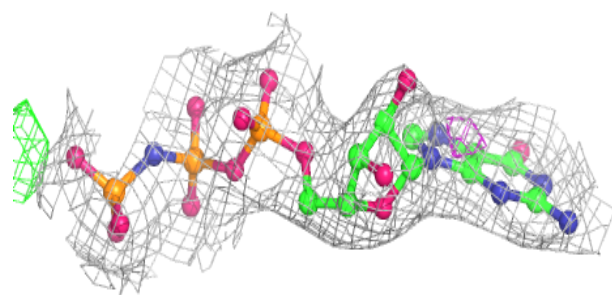
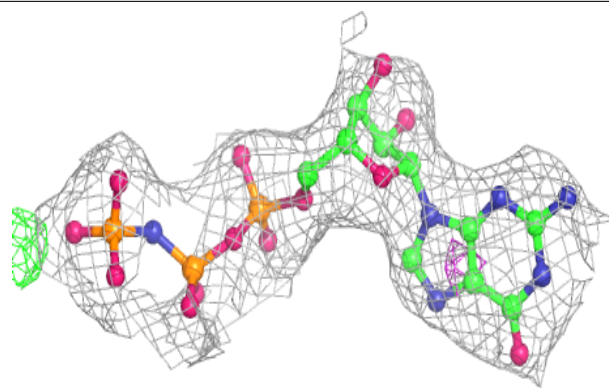
Electron density around AMP C 506:

$2mF_o-DF_c$ (at 0.7 rmsd) in gray
 mF_o-DF_c (at 3 rmsd) in purple (negative)
and green (positive)

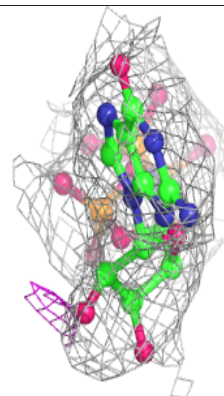
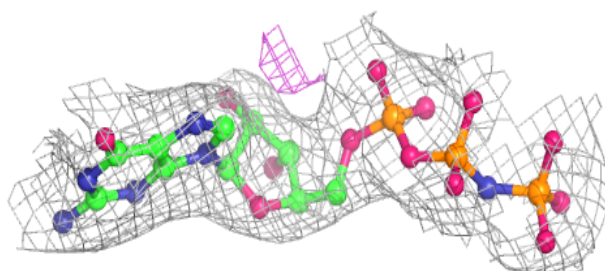
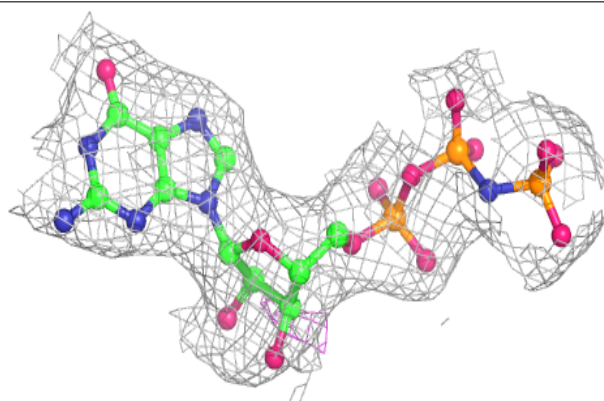


Electron density around GNP A 502:

$2mF_o-DF_c$ (at 0.7 rmsd) in gray
 mF_o-DF_c (at 3 rmsd) in purple (negative)
and green (positive)

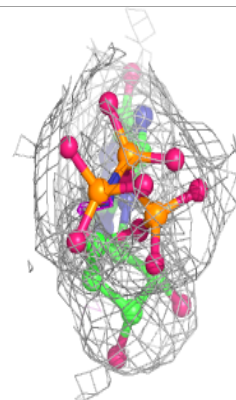
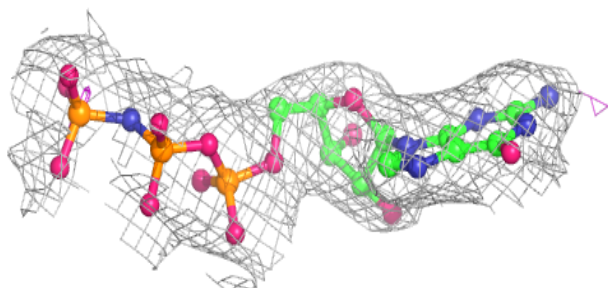
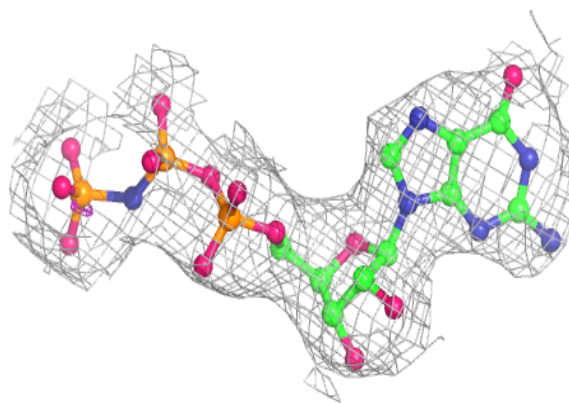
**Electron density around GNP B 705:**

$2mF_o-DF_c$ (at 0.7 rmsd) in gray
 mF_o-DF_c (at 3 rmsd) in purple (negative)
and green (positive)

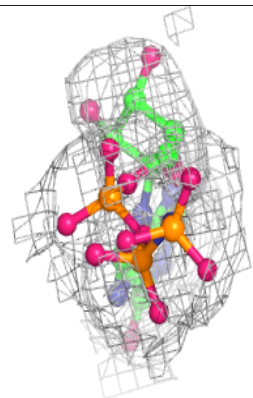
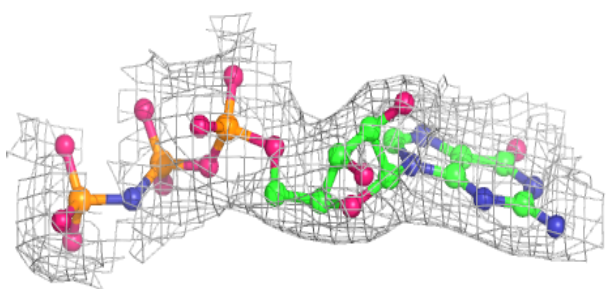
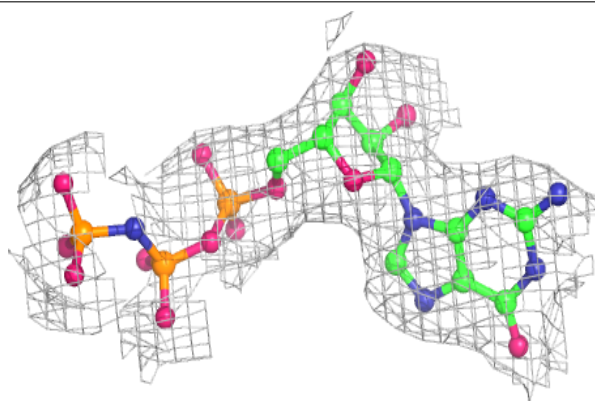


Electron density around GNP C 503:

$2mF_o-DF_c$ (at 0.7 rmsd) in gray
 mF_o-DF_c (at 3 rmsd) in purple (negative)
and green (positive)

**Electron density around GNP D 703:**

$2mF_o-DF_c$ (at 0.7 rmsd) in gray
 mF_o-DF_c (at 3 rmsd) in purple (negative)
and green (positive)



6.5 Other polymers [i](#)

There are no such residues in this entry.