



Full wwPDB X-ray Structure Validation Report ⓘ

Sep 20, 2023 – 12:49 AM EDT

PDB ID : 5KN1
Title : Recombinant bovine skeletal calsequestrin, high-Ca²⁺ form
Authors : Lewis, K.M.; Byrd, S.; Kang, C.
Deposited on : 2016-06-27
Resolution : 2.14 Å(reported)

This is a Full wwPDB X-ray Structure Validation Report for a publicly released PDB entry.

We welcome your comments at validation@mail.wwpdb.org

A user guide is available at

<https://www.wwpdb.org/validation/2017/XrayValidationReportHelp>

with specific help available everywhere you see the ⓘ symbol.

The types of validation reports are described at

<http://www.wwpdb.org/validation/2017/FAQs#types>.

The following versions of software and data (see [references ⓘ](#)) were used in the production of this report:

MolProbity : 4.02b-467
Mogul : 1.8.5 (274361), CSD as541be (2020)
Xtriage (Phenix) : 1.13
EDS : 2.35.1
Percentile statistics : 20191225.v01 (using entries in the PDB archive December 25th 2019)
Refmac : 5.8.0158
CCP4 : 7.0.044 (Gargrove)
Ideal geometry (proteins) : Engh & Huber (2001)
Ideal geometry (DNA, RNA) : Parkinson et al. (1996)
Validation Pipeline (wwPDB-VP) : 2.35.1

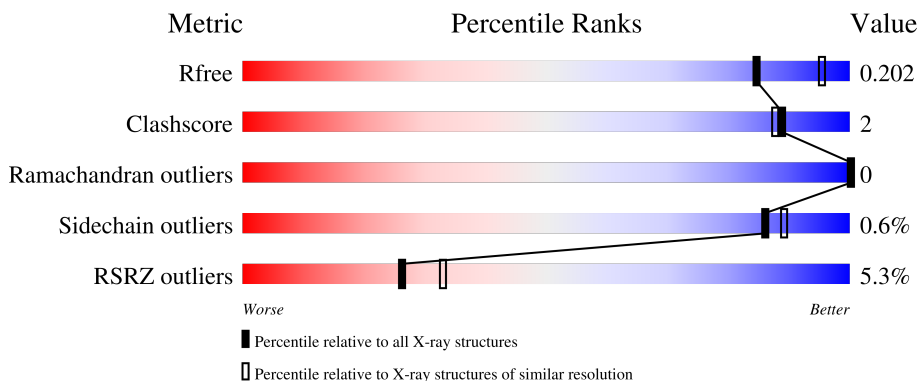
1 Overall quality at a glance

The following experimental techniques were used to determine the structure:

X-RAY DIFFRACTION

The reported resolution of this entry is 2.14 Å.

Percentile scores (ranging between 0-100) for global validation metrics of the entry are shown in the following graphic. The table shows the number of entries on which the scores are based.



Metric	Whole archive (#Entries)	Similar resolution (#Entries, resolution range(Å))
R_{free}	130704	2523 (2.16-2.12)
Clashscore	141614	2653 (2.16-2.12)
Ramachandran outliers	138981	2618 (2.16-2.12)
Sidechain outliers	138945	2617 (2.16-2.12)
RSRZ outliers	127900	2485 (2.16-2.12)

The table below summarises the geometric issues observed across the polymeric chains and their fit to the electron density. The red, orange, yellow and green segments of the lower bar indicate the fraction of residues that contain outliers for ≥ 3 , 2, 1 and 0 types of geometric quality criteria respectively. A grey segment represents the fraction of residues that are not modelled. The numeric value for each fraction is indicated below the corresponding segment, with a dot representing fractions $\leq 5\%$. The upper red bar (where present) indicates the fraction of residues that have poor fit to the electron density. The numeric value is given above the bar.

Mol	Chain	Length	Quality of chain
1	A	361	 93%
1	B	361	 91% 5%
1	C	361	 94%

The following table lists non-polymeric compounds, carbohydrate monomers and non-standard residues in protein, DNA, RNA chains that are outliers for geometric or electron-density-fit criteria:

Mol	Type	Chain	Res	Chirality	Geometry	Clashes	Electron density
4	CL	B	416	-	-	X	-

2 Entry composition

There are 5 unique types of molecules in this entry. The entry contains 16979 atoms, of which 7979 are hydrogens and 0 are deuteriums.

In the tables below, the ZeroOcc column contains the number of atoms modelled with zero occupancy, the AltConf column contains the number of residues with at least one atom in alternate conformation and the Trace column contains the number of residues modelled with at most 2 atoms.

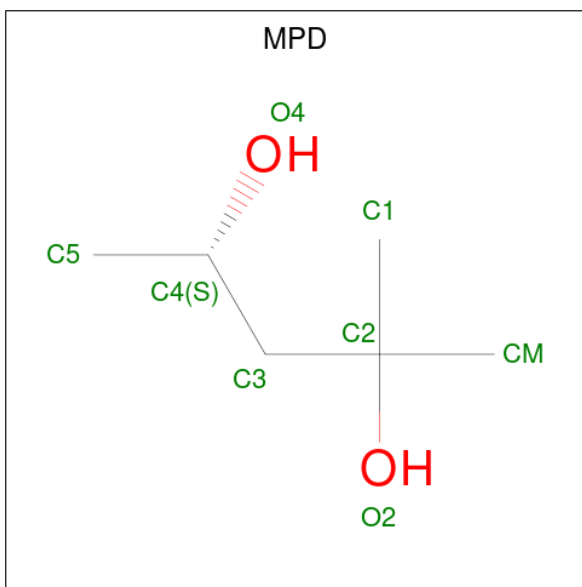
- Molecule 1 is a protein called Calsequestrin.

Mol	Chain	Residues	Atoms						ZeroOcc	AltConf	Trace
			Total	C	H	N	O	S			
1	A	346	5432	1795	2625	419	587	6	0	0	0
1	B	348	5479	1810	2647	422	594	6	0	2	0
1	C	348	5478	1809	2651	421	591	6	0	0	0

- Molecule 2 is CALCIUM ION (three-letter code: CA) (formula: Ca).

Mol	Chain	Residues	Atoms		ZeroOcc	AltConf
2	A	13	Total	Ca	0	0
			13	13		
2	B	15	Total	Ca	0	0
			15	15		
2	C	12	Total	Ca	0	0
			12	12		

- Molecule 3 is (4S)-2-METHYL-2,4-PENTANEDIOL (three-letter code: MPD) (formula: C₆H₁₄O₂).



Mol	Chain	Residues	Atoms			ZeroOcc	AltConf	
3	A	1	Total	C	H	O	0	0
			22	6	14	2		
3	A	1	Total	C	H	O	0	0
			22	6	14	2		
3	B	1	Total	C	H	O	0	0
			22	6	14	2		
3	B	1	Total	C	H	O	0	0
			22	6	14	2		

- Molecule 4 is CHLORIDE ION (three-letter code: CL) (formula: Cl).

Mol	Chain	Residues	Atoms		ZeroOcc	AltConf
4	B	1	Total	Cl	0	0
			1	1		

- Molecule 5 is water.

Mol	Chain	Residues	Atoms		ZeroOcc	AltConf
5	A	222	Total	O	0	0
			222	222		
5	B	101	Total	O	0	0
			101	101		
5	C	138	Total	O	0	0
			138	138		

3 Residue-property plots [i](#)

These plots are drawn for all protein, RNA, DNA and oligosaccharide chains in the entry. The first graphic for a chain summarises the proportions of the various outlier classes displayed in the second graphic. The second graphic shows the sequence view annotated by issues in geometry and electron density. Residues are color-coded according to the number of geometric quality criteria for which they contain at least one outlier: green = 0, yellow = 1, orange = 2 and red = 3 or more. A red dot above a residue indicates a poor fit to the electron density ($RSRZ > 2$). Stretches of 2 or more consecutive residues without any outlier are shown as a green connector. Residues present in the sample, but not in the model, are shown in grey.

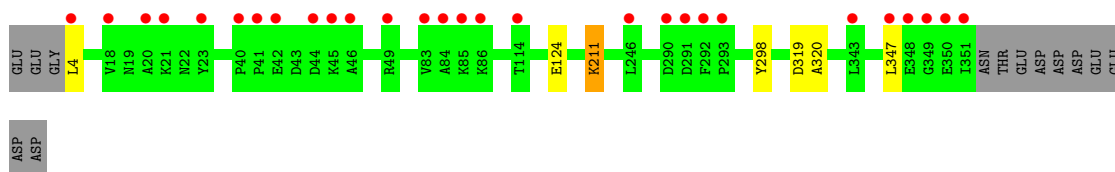
- Molecule 1: Calsequestrin



- Molecule 1: Calsequestrin



- Molecule 1: Calsequestrin



4 Data and refinement statistics

Property	Value	Source
Space group	C 2 2 21	Depositor
Cell constants a, b, c, α , β , γ	135.67Å 165.60Å 156.63Å 90.00° 90.00° 90.00°	Depositor
Resolution (Å)	43.63 – 2.14 43.63 – 2.14	Depositor EDS
% Data completeness (in resolution range)	99.2 (43.63-2.14) 90.5 (43.63-2.14)	Depositor EDS
R_{merge}	0.09	Depositor
R_{sym}	(Not available)	Depositor
$\langle I/\sigma(I) \rangle$ ¹	2.26 (at 2.14Å)	Xtrriage
Refinement program	PHENIX 1.10_2155	Depositor
R, R_{free}	0.184 , 0.201 0.184 , 0.202	Depositor DCC
R_{free} test set	2000 reflections (2.07%)	wwPDB-VP
Wilson B-factor (Å ²)	37.6	Xtrriage
Anisotropy	0.244	Xtrriage
Bulk solvent k_{sol} (e/Å ³), B_{sol} (Å ²)	0.37 , 48.5	EDS
L-test for twinning ²	$\langle L \rangle = 0.49$, $\langle L^2 \rangle = 0.32$	Xtrriage
Estimated twinning fraction	No twinning to report.	Xtrriage
F_o, F_c correlation	0.96	EDS
Total number of atoms	16979	wwPDB-VP
Average B, all atoms (Å ²)	65.0	wwPDB-VP

Xtrriage's analysis on translational NCS is as follows: *The largest off-origin peak in the Patterson function is 3.59% of the height of the origin peak. No significant pseudotranslation is detected.*

¹Intensities estimated from amplitudes.

²Theoretical values of $\langle |L| \rangle$, $\langle L^2 \rangle$ for acentric reflections are 0.5, 0.333 respectively for untwinned datasets, and 0.375, 0.2 for perfectly twinned datasets.

5 Model quality

5.1 Standard geometry

Bond lengths and bond angles in the following residue types are not validated in this section: MPD, CL, CA

The Z score for a bond length (or angle) is the number of standard deviations the observed value is removed from the expected value. A bond length (or angle) with $|Z| > 5$ is considered an outlier worth inspection. RMSZ is the root-mean-square of all Z scores of the bond lengths (or angles).

Mol	Chain	Bond lengths		Bond angles	
		RMSZ	# Z >5	RMSZ	# Z >5
1	A	0.35	0/2872	0.50	0/3903
1	B	0.30	0/2905	0.45	0/3948
1	C	0.31	0/2892	0.47	0/3930
All	All	0.32	0/8669	0.47	0/11781

There are no bond length outliers.

There are no bond angle outliers.

There are no chirality outliers.

There are no planarity outliers.

5.2 Too-close contacts

In the following table, the Non-H and H(model) columns list the number of non-hydrogen atoms and hydrogen atoms in the chain respectively. The H(added) column lists the number of hydrogen atoms added and optimized by MolProbity. The Clashes column lists the number of clashes within the asymmetric unit, whereas Symm-Clashes lists symmetry-related clashes.

Mol	Chain	Non-H	H(model)	H(added)	Clashes	Symm-Clashes
1	A	2807	2625	2622	8	0
1	B	2832	2647	2639	14	0
1	C	2827	2651	2648	8	0
2	A	13	0	0	0	0
2	B	15	0	0	0	0
2	C	12	0	0	0	0
3	A	16	28	28	1	0
3	B	16	28	28	0	0
4	B	1	0	0	2	0
5	A	222	0	0	6	1

Continued on next page...

Continued from previous page...

Mol	Chain	Non-H	H(model)	H(added)	Clashes	Symm-Clashes
5	B	101	0	0	7	0
5	C	138	0	0	3	0
All	All	9000	7979	7965	31	1

The all-atom clashscore is defined as the number of clashes found per 1000 atoms (including hydrogen atoms). The all-atom clashscore for this structure is 2.

All (31) close contacts within the same asymmetric unit are listed below, sorted by their clash magnitude.

Atom-1	Atom-2	Interatomic distance (Å)	Clash overlap (Å)
4:B:416:CL:CL	5:B:567:HOH:O	2.08	1.05
4:B:416:CL:CL	5:B:592:HOH:O	2.13	1.03
1:A:330:GLU:OE1	5:A:501:HOH:O	1.95	0.83
1:B:24:LYS:O	5:B:501:HOH:O	1.98	0.82
1:C:320:ALA:O	5:C:501:HOH:O	1.98	0.81
1:A:283:SER:OG	5:A:502:HOH:O	2.03	0.75
1:B:319:ASP:N	1:B:319:ASP:OD1	2.21	0.72
1:B:250:HIS:ND1	5:B:505:HOH:O	2.22	0.72
1:A:23:TYR:OH	1:A:86:LYS:NZ	2.22	0.71
1:A:124:GLU:OE1	5:A:503:HOH:O	2.11	0.68
1:B:144[B]:ASP:OD2	5:B:503:HOH:O	2.13	0.66
1:C:124:GLU:OE1	5:C:502:HOH:O	2.14	0.65
1:B:231:ARG:NE	5:B:504:HOH:O	2.27	0.65
1:C:4:LEU:O	1:C:4:LEU:HD13	2.01	0.60
1:B:283:SER:OG	5:B:504:HOH:O	2.16	0.60
1:A:211:LYS:NZ	5:A:506:HOH:O	2.34	0.55
1:A:85:LYS:NZ	5:A:510:HOH:O	2.41	0.54
3:A:414:MPD:O4	3:A:414:MPD:H12	2.10	0.51
1:B:80:ASP:HB3	1:B:83:VAL:CG1	2.41	0.51
1:B:42:GLU:O	1:B:48:GLN:NE2	2.45	0.49
1:A:24:LYS:NZ	5:A:504:HOH:O	2.16	0.47
1:C:211:LYS:NZ	5:C:509:HOH:O	2.41	0.46
1:C:4:LEU:O	1:C:4:LEU:CD1	2.64	0.46
1:B:298:TYR:HH	1:C:4:LEU:N	2.15	0.45
1:B:249:ILE:HD11	1:B:316:ASN:ND2	2.32	0.44
1:B:316:ASN:OD1	1:B:318:THR:HB	2.17	0.44
1:A:312:ILE:HD13	1:A:339:LEU:HD11	2.01	0.42
1:C:319:ASP:OD1	1:C:319:ASP:N	2.45	0.42
1:B:4:LEU:HA	1:C:298:TYR:OH	2.20	0.41
1:B:248:GLY:O	1:B:317:VAL:N	2.36	0.41

All (1) symmetry-related close contacts are listed below. The label for Atom-2 includes the symmetry operator and encoded unit-cell translations to be applied.

Atom-1	Atom-2	Interatomic distance (Å)	Clash overlap (Å)
5:A:637:HOH:O	5:A:656:HOH:O[4_555]	2.01	0.19

5.3 Torsion angles [i](#)

5.3.1 Protein backbone [i](#)

In the following table, the Percentiles column shows the percent Ramachandran outliers of the chain as a percentile score with respect to all X-ray entries followed by that with respect to entries of similar resolution.

The Analysed column shows the number of residues for which the backbone conformation was analysed, and the total number of residues.

Mol	Chain	Analysed	Favoured	Allowed	Outliers	Percentiles	
1	A	344/361 (95%)	337 (98%)	7 (2%)	0	100	100
1	B	348/361 (96%)	339 (97%)	9 (3%)	0	100	100
1	C	346/361 (96%)	341 (99%)	5 (1%)	0	100	100
All	All	1038/1083 (96%)	1017 (98%)	21 (2%)	0	100	100

There are no Ramachandran outliers to report.

5.3.2 Protein sidechains [i](#)

In the following table, the Percentiles column shows the percent sidechain outliers of the chain as a percentile score with respect to all X-ray entries followed by that with respect to entries of similar resolution.

The Analysed column shows the number of residues for which the sidechain conformation was analysed, and the total number of residues.

Mol	Chain	Analysed	Rotameric	Outliers	Percentiles	
1	A	308/323 (95%)	307 (100%)	1 (0%)	92	94
1	B	312/323 (97%)	309 (99%)	3 (1%)	76	79
1	C	311/323 (96%)	309 (99%)	2 (1%)	86	89
All	All	931/969 (96%)	925 (99%)	6 (1%)	86	89

All (6) residues with a non-rotameric sidechain are listed below:

Mol	Chain	Res	Type
1	A	211	LYS
1	B	158	GLU
1	B	211	LYS
1	B	319	ASP
1	C	211	LYS
1	C	347	LEU

Sometimes sidechains can be flipped to improve hydrogen bonding and reduce clashes. There are no such sidechains identified.

5.3.3 RNA [i](#)

There are no RNA molecules in this entry.

5.4 Non-standard residues in protein, DNA, RNA chains [i](#)

There are no non-standard protein/DNA/RNA residues in this entry.

5.5 Carbohydrates [i](#)

There are no monosaccharides in this entry.

5.6 Ligand geometry [i](#)

Of 45 ligands modelled in this entry, 41 are monoatomic - leaving 4 for Mogul analysis.

In the following table, the Counts columns list the number of bonds (or angles) for which Mogul statistics could be retrieved, the number of bonds (or angles) that are observed in the model and the number of bonds (or angles) that are defined in the Chemical Component Dictionary. The Link column lists molecule types, if any, to which the group is linked. The Z score for a bond length (or angle) is the number of standard deviations the observed value is removed from the expected value. A bond length (or angle) with $|Z| > 2$ is considered an outlier worth inspection. RMSZ is the root-mean-square of all Z scores of the bond lengths (or angles).

Mol	Type	Chain	Res	Link	Bond lengths			Bond angles		
					Counts	RMSZ	$\# Z > 2$	Counts	RMSZ	$\# Z > 2$
3	MPD	B	417	-	7,7,7	0.37	0	9,10,10	0.30	0
3	MPD	A	415	-	7,7,7	0.32	0	9,10,10	0.38	0
3	MPD	B	418	-	7,7,7	0.35	0	9,10,10	0.34	0
3	MPD	A	414	-	7,7,7	0.27	0	9,10,10	0.35	0

In the following table, the Chirals column lists the number of chiral outliers, the number of chiral centers analysed, the number of these observed in the model and the number defined in the Chemical Component Dictionary. Similar counts are reported in the Torsion and Rings columns. '-' means no outliers of that kind were identified.

Mol	Type	Chain	Res	Link	Chirals	Torsions	Rings
3	MPD	B	417	-	-	1/5/5/5	-
3	MPD	A	415	-	-	0/5/5/5	-
3	MPD	B	418	-	-	0/5/5/5	-
3	MPD	A	414	-	-	2/5/5/5	-

There are no bond length outliers.

There are no bond angle outliers.

There are no chirality outliers.

All (3) torsion outliers are listed below:

Mol	Chain	Res	Type	Atoms
3	A	414	MPD	C2-C3-C4-O4
3	A	414	MPD	C2-C3-C4-C5
3	B	417	MPD	O2-C2-C3-C4

There are no ring outliers.

1 monomer is involved in 1 short contact:

Mol	Chain	Res	Type	Clashes	Symm-Clashes
3	A	414	MPD	1	0

5.7 Other polymers [i](#)

There are no such residues in this entry.

5.8 Polymer linkage issues [i](#)

There are no chain breaks in this entry.

6 Fit of model and data

6.1 Protein, DNA and RNA chains

In the following table, the column labelled ‘#RSRZ > 2’ contains the number (and percentage) of RSRZ outliers, followed by percent RSRZ outliers for the chain as percentile scores relative to all X-ray entries and entries of similar resolution. The OWAB column contains the minimum, median, 95th percentile and maximum values of the occupancy-weighted average B-factor per residue. The column labelled ‘Q < 0.9’ lists the number of (and percentage) of residues with an average occupancy less than 0.9.

Mol	Chain	Analysed	<RSRZ>	#RSRZ>2	OWAB(Å ²)	Q<0.9
1	A	346/361 (95%)	-0.05	3 (0%) 84 87	29, 44, 73, 113	0
1	B	348/361 (96%)	0.31	24 (6%) 16 21	44, 64, 102, 134	0
1	C	348/361 (96%)	0.26	28 (8%) 12 15	35, 57, 103, 136	0
All	All	1042/1083 (96%)	0.18	55 (5%) 26 33	29, 55, 99, 136	0

All (55) RSRZ outliers are listed below:

Mol	Chain	Res	Type	RSRZ
1	C	351	ILE	6.6
1	B	343	LEU	4.9
1	B	347	LEU	4.8
1	C	347	LEU	4.6
1	A	349	GLY	4.5
1	B	350	GLU	4.2
1	B	351	ILE	4.1
1	C	350	GLU	4.1
1	C	83	VAL	3.9
1	C	42	GLU	3.7
1	B	320	ALA	3.7
1	C	4	LEU	3.5
1	C	45	LYS	3.5
1	B	4	LEU	3.5
1	B	46	ALA	3.4
1	C	348	GLU	3.3
1	B	319	ASP	3.3
1	B	248	GLY	3.2
1	C	21	LYS	3.1
1	C	40	PRO	3.0
1	C	23	TYR	3.0
1	B	45	LYS	2.9
1	B	318	THR	2.9

Continued on next page...

Continued from previous page...

Mol	Chain	Res	Type	RSRZ
1	B	114	THR	2.9
1	A	45	LYS	2.8
1	C	49	ARG	2.8
1	B	346	VAL	2.7
1	C	86	LYS	2.6
1	B	315	VAL	2.6
1	C	20	ALA	2.6
1	C	343	LEU	2.6
1	B	43	ASP	2.6
1	B	191	LYS	2.6
1	B	326	GLU	2.5
1	C	349	GLY	2.5
1	B	328	ASP	2.5
1	C	246	LEU	2.4
1	C	292	PHE	2.4
1	B	49	ARG	2.4
1	C	290	ASP	2.4
1	C	18	VAL	2.3
1	C	84	ALA	2.3
1	B	317	VAL	2.2
1	B	323	VAL	2.2
1	C	85	LYS	2.2
1	C	114	THR	2.2
1	C	46	ALA	2.2
1	A	49	ARG	2.1
1	C	291	ASP	2.1
1	B	339	LEU	2.1
1	C	293	PRO	2.1
1	C	44	ASP	2.1
1	C	41	PRO	2.1
1	B	192	LEU	2.0
1	B	249	ILE	2.0

6.2 Non-standard residues in protein, DNA, RNA chains [i](#)

There are no non-standard protein/DNA/RNA residues in this entry.

6.3 Carbohydrates [i](#)

There are no monosaccharides in this entry.

6.4 Ligands i

In the following table, the Atoms column lists the number of modelled atoms in the group and the number defined in the chemical component dictionary. The B-factors column lists the minimum, median, 95th percentile and maximum values of B factors of atoms in the group. The column labelled 'Q< 0.9' lists the number of atoms with occupancy less than 0.9.

Mol	Type	Chain	Res	Atoms	RSCC	RSR	B-factors(Å ²)	Q<0.9
2	CA	A	413	1/1	0.72	0.08	121,121,121,121	0
2	CA	C	412	1/1	0.75	0.10	117,117,117,117	0
2	CA	B	405	1/1	0.77	0.38	74,74,74,74	0
2	CA	B	415	1/1	0.79	0.08	116,116,116,116	0
3	MPD	A	415	8/8	0.83	0.29	73,93,99,119	0
2	CA	B	409	1/1	0.84	0.05	72,72,72,72	0
2	CA	A	406	1/1	0.85	0.26	63,63,63,63	0
2	CA	B	408	1/1	0.85	0.11	112,112,112,112	0
2	CA	A	404	1/1	0.85	0.21	74,74,74,74	0
3	MPD	B	418	8/8	0.85	0.49	87,105,112,125	0
2	CA	C	401	1/1	0.87	0.18	93,93,93,93	0
2	CA	A	412	1/1	0.88	0.10	79,79,79,79	0
2	CA	B	404	1/1	0.89	0.40	79,79,79,79	0
3	MPD	A	414	8/8	0.89	0.24	70,85,102,102	0
2	CA	C	408	1/1	0.92	0.28	80,80,80,80	0
2	CA	B	403	1/1	0.93	0.18	53,53,53,53	0
2	CA	B	411	1/1	0.93	0.13	71,71,71,71	0
2	CA	A	405	1/1	0.93	0.14	58,58,58,58	0
2	CA	C	405	1/1	0.94	0.04	88,88,88,88	0
3	MPD	B	417	8/8	0.94	0.18	65,84,107,107	0
2	CA	B	406	1/1	0.94	0.06	77,77,77,77	0
2	CA	B	402	1/1	0.95	0.12	51,51,51,51	0
2	CA	A	409	1/1	0.95	0.04	59,59,59,59	0
2	CA	B	412	1/1	0.95	0.10	57,57,57,57	0
2	CA	B	414	1/1	0.95	0.05	85,85,85,85	0
2	CA	C	411	1/1	0.95	0.06	88,88,88,88	0
2	CA	B	407	1/1	0.96	0.05	77,77,77,77	0
2	CA	C	404	1/1	0.96	0.14	70,70,70,70	0
4	CL	B	416	1/1	0.96	0.06	91,91,91,91	0
2	CA	A	407	1/1	0.97	0.10	43,43,43,43	0
2	CA	C	406	1/1	0.97	0.12	51,51,51,51	0
2	CA	B	410	1/1	0.97	0.06	78,78,78,78	0
2	CA	A	402	1/1	0.97	0.11	35,35,35,35	0
2	CA	A	410	1/1	0.97	0.08	46,46,46,46	0
2	CA	C	407	1/1	0.98	0.14	56,56,56,56	0
2	CA	B	413	1/1	0.98	0.07	50,50,50,50	0
2	CA	C	410	1/1	0.98	0.05	58,58,58,58	0

Continued on next page...

Continued from previous page...

Mol	Type	Chain	Res	Atoms	RSCC	RSR	B-factors(\AA^2)	Q<0.9
2	CA	C	402	1/1	0.98	0.08	58,58,58,58	0
2	CA	C	403	1/1	0.98	0.15	52,52,52,52	0
2	CA	B	401	1/1	0.99	0.04	59,59,59,59	0
2	CA	A	403	1/1	0.99	0.15	36,36,36,36	0
2	CA	A	411	1/1	0.99	0.06	46,46,46,46	0
2	CA	C	409	1/1	0.99	0.05	42,42,42,42	0
2	CA	A	408	1/1	0.99	0.13	38,38,38,38	0
2	CA	A	401	1/1	0.99	0.09	51,51,51,51	0

6.5 Other polymers [i](#)

There are no such residues in this entry.