



Full wwPDB X-ray Structure Validation Report ⓘ

Sep 20, 2023 – 08:40 AM EDT

PDB ID : 5K0X
Title : Crystal structure of the catalytic domain of the proto-oncogene tyrosine-protein kinase MER in complex with inhibitor UNC2541
Authors : McIver, A.L.; Zhang, W.; Liu, Q.; Jiang, X.; Stashko, M.A.; Nichols, J.; Miley, M.J.; Norris-Drouin, J.; Machius, M.; DeRyckere, D.; Wood, E.; Graham, D.K.; Earp, H.S.; Kireev, D.; Frye, S.V.; Wang, X.
Deposited on : 2016-05-17
Resolution : 2.23 Å(reported)

This is a Full wwPDB X-ray Structure Validation Report for a publicly released PDB entry.

We welcome your comments at validation@mail.wwpdb.org

A user guide is available at

<https://www.wwpdb.org/validation/2017/XrayValidationReportHelp>

with specific help available everywhere you see the ⓘ symbol.

The types of validation reports are described at

<http://www.wwpdb.org/validation/2017/FAQs#types>.

The following versions of software and data (see [references](#) ①) were used in the production of this report:

MolProbity : 4.02b-467
Mogul : 1.8.5 (274361), CSD as541be (2020)
Xtrriage (Phenix) : 1.13
EDS : 2.35.1
buster-report : 1.1.7 (2018)
Percentile statistics : 20191225.v01 (using entries in the PDB archive December 25th 2019)
Refmac : 5.8.0158
CCP4 : 7.0.044 (Gargrove)
Ideal geometry (proteins) : Engh & Huber (2001)
Ideal geometry (DNA, RNA) : Parkinson et al. (1996)
Validation Pipeline (wwPDB-VP) : 2.35.1

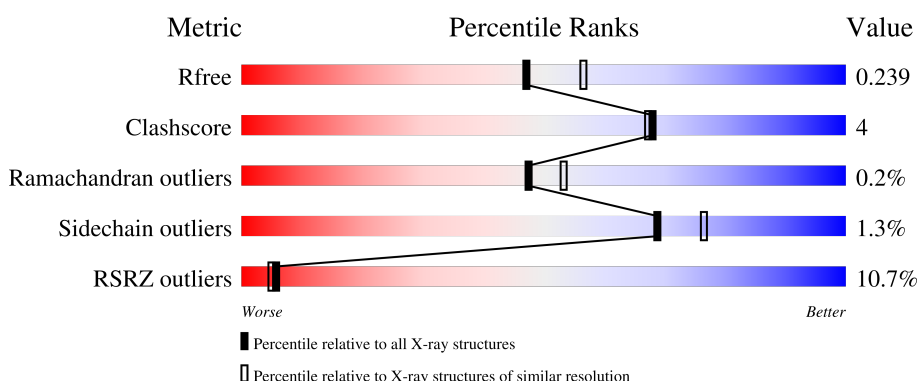
1 Overall quality at a glance

The following experimental techniques were used to determine the structure:

X-RAY DIFFRACTION

The reported resolution of this entry is 2.23 Å.

Percentile scores (ranging between 0-100) for global validation metrics of the entry are shown in the following graphic. The table shows the number of entries on which the scores are based.



Metric	Whole archive (#Entries)	Similar resolution (#Entries, resolution range(Å))
R_{free}	130704	2391 (2.26-2.22)
Clashscore	141614	2539 (2.26-2.22)
Ramachandran outliers	138981	2489 (2.26-2.22)
Sidechain outliers	138945	2490 (2.26-2.22)
RSRZ outliers	127900	2353 (2.26-2.22)

The table below summarises the geometric issues observed across the polymeric chains and their fit to the electron density. The red, orange, yellow and green segments of the lower bar indicate the fraction of residues that contain outliers for ≥ 3 , 2, 1 and 0 types of geometric quality criteria respectively. A grey segment represents the fraction of residues that are not modelled. The numeric value for each fraction is indicated below the corresponding segment, with a dot representing fractions $\leq 5\%$. The upper red bar (where present) indicates the fraction of residues that have poor fit to the electron density. The numeric value is given above the bar.

Mol	Chain	Length	Quality of chain
1	A	313	 10% 72% 10% • 18%
1	B	313	 8% 74% 6% • 19%

2 Entry composition i

There are 4 unique types of molecules in this entry. The entry contains 8547 atoms, of which 4234 are hydrogens and 0 are deuteriums.

In the tables below, the ZeroOcc column contains the number of atoms modelled with zero occupancy, the AltConf column contains the number of residues with at least one atom in alternate conformation and the Trace column contains the number of residues modelled with at most 2 atoms.

- Molecule 1 is a protein called Tyrosine-protein kinase Mer.

Mol	Chain	Residues	Atoms						ZeroOcc	AltConf	Trace
			Total	C	H	N	O	S			
1	A	258	4197	1339	2102	349	388	19	0	4	0
1	B	254	4114	1313	2064	343	375	19	0	2	0

There are 36 discrepancies between the modelled and reference sequences:

Chain	Residue	Modelled	Actual	Comment	Reference
A	552	MET	-	initiating methionine	UNP Q12866
A	553	GLY	-	expression tag	UNP Q12866
A	554	SER	-	expression tag	UNP Q12866
A	555	SER	-	expression tag	UNP Q12866
A	556	HIS	-	expression tag	UNP Q12866
A	557	HIS	-	expression tag	UNP Q12866
A	558	HIS	-	expression tag	UNP Q12866
A	559	HIS	-	expression tag	UNP Q12866
A	560	HIS	-	expression tag	UNP Q12866
A	561	HIS	-	expression tag	UNP Q12866
A	562	SER	-	expression tag	UNP Q12866
A	563	SER	-	expression tag	UNP Q12866
A	564	GLY	-	expression tag	UNP Q12866
A	565	LEU	-	expression tag	UNP Q12866
A	566	VAL	-	expression tag	UNP Q12866
A	567	PRO	-	expression tag	UNP Q12866
A	568	ARG	-	expression tag	UNP Q12866
A	569	GLY	-	expression tag	UNP Q12866
B	552	MET	-	initiating methionine	UNP Q12866
B	553	GLY	-	expression tag	UNP Q12866
B	554	SER	-	expression tag	UNP Q12866
B	555	SER	-	expression tag	UNP Q12866
B	556	HIS	-	expression tag	UNP Q12866
B	557	HIS	-	expression tag	UNP Q12866
B	558	HIS	-	expression tag	UNP Q12866

Continued on next page...

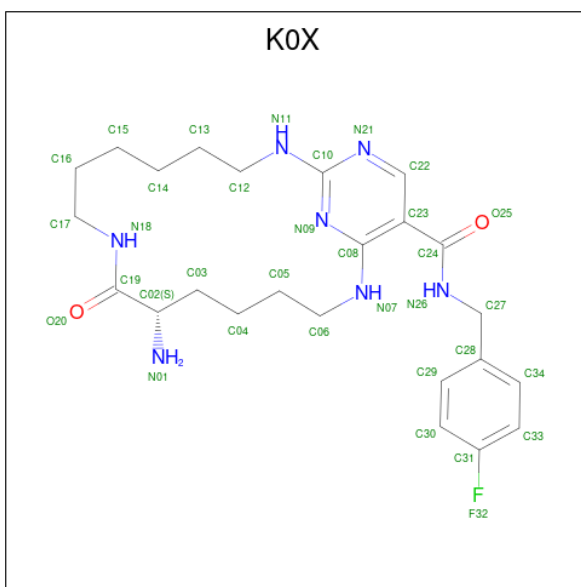
Continued from previous page...

Chain	Residue	Modelled	Actual	Comment	Reference
B	559	HIS	-	expression tag	UNP Q12866
B	560	HIS	-	expression tag	UNP Q12866
B	561	HIS	-	expression tag	UNP Q12866
B	562	SER	-	expression tag	UNP Q12866
B	563	SER	-	expression tag	UNP Q12866
B	564	GLY	-	expression tag	UNP Q12866
B	565	LEU	-	expression tag	UNP Q12866
B	566	VAL	-	expression tag	UNP Q12866
B	567	PRO	-	expression tag	UNP Q12866
B	568	ARG	-	expression tag	UNP Q12866
B	569	GLY	-	expression tag	UNP Q12866

- Molecule 2 is CHLORIDE ION (three-letter code: CL) (formula: Cl).

Mol	Chain	Residues	Atoms	ZeroOcc	AltConf
2	A	3	Total Cl 3 3	0	0
2	B	2	Total Cl 2 2	0	0

- Molecule 3 is (7S)-7-amino-N-[(4-fluorophenyl)methyl]-8-oxo-2,9,16,18,21-pentaazabicyclo[15.3.1]henicosa-1(21),17,19-triene-20-carboxamide (three-letter code: K0X) (formula: C₂₄H₃₄FN₇O₂).



Mol	Chain	Residues	Atoms					ZeroOcc	AltConf	
			Total	C	F	H	N			O
3	A	1	68	24	1	34	7	2	0	0
3	B	1	68	24	1	34	7	2	0	0

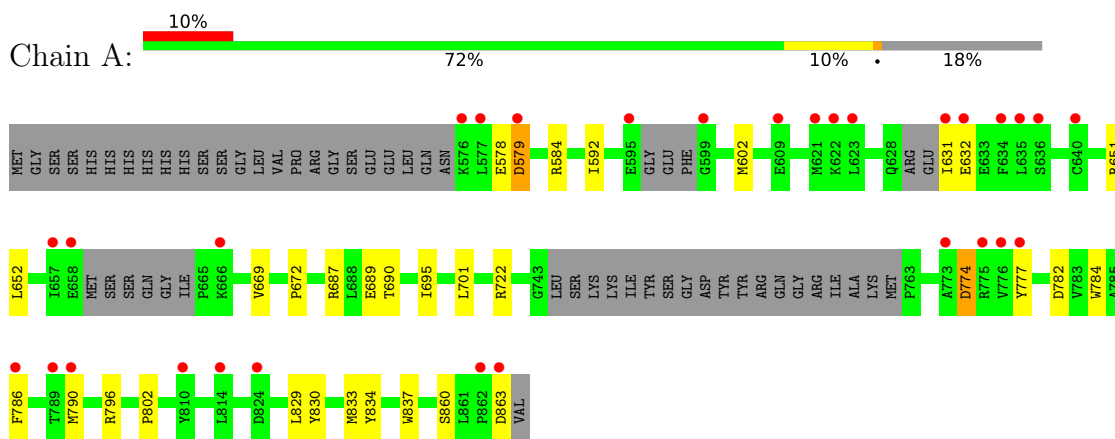
- Molecule 4 is water.

Mol	Chain	Residues	Atoms		ZeroOcc	AltConf
4	A	50	Total	O	0	0
			50	50		
4	B	45	Total	O	0	0
			45	45		

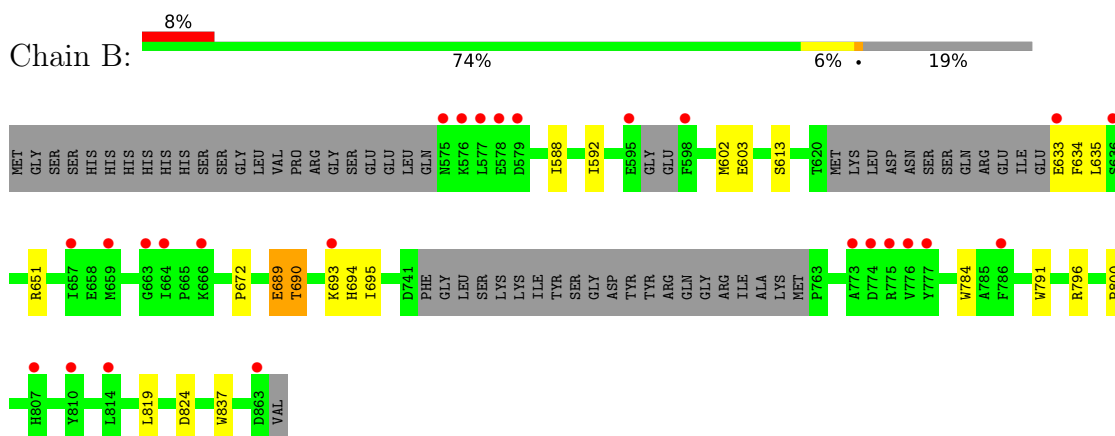
3 Residue-property plots [i](#)

These plots are drawn for all protein, RNA, DNA and oligosaccharide chains in the entry. The first graphic for a chain summarises the proportions of the various outlier classes displayed in the second graphic. The second graphic shows the sequence view annotated by issues in geometry and electron density. Residues are color-coded according to the number of geometric quality criteria for which they contain at least one outlier: green = 0, yellow = 1, orange = 2 and red = 3 or more. A red dot above a residue indicates a poor fit to the electron density ($RSRZ > 2$). Stretches of 2 or more consecutive residues without any outlier are shown as a green connector. Residues present in the sample, but not in the model, are shown in grey.

- Molecule 1: Tyrosine-protein kinase Mer



- Molecule 1: Tyrosine-protein kinase Mer



4 Data and refinement statistics

Property	Value	Source
Space group	P 1 21 1	Depositor
Cell constants a, b, c, α , β , γ	51.67Å 91.60Å 69.77Å 90.00° 102.37° 90.00°	Depositor
Resolution (Å)	27.86 – 2.23 27.86 – 2.23	Depositor EDS
% Data completeness (in resolution range)	85.0 (27.86-2.23) 80.8 (27.86-2.23)	Depositor EDS
R_{merge}	0.08	Depositor
R_{sym}	(Not available)	Depositor
$\langle I/\sigma(I) \rangle$ ¹	3.96 (at 2.24Å)	Xtrriage
Refinement program	PHENIX 1.10.1_2155	Depositor
R, R_{free}	0.185 , 0.239 0.185 , 0.239	Depositor DCC
R_{free} test set	2000 reflections (7.60%)	wwPDB-VP
Wilson B-factor (Å ²)	27.1	Xtrriage
Anisotropy	0.316	Xtrriage
Bulk solvent k_{sol} (e/Å ³), B_{sol} (Å ²)	0.41 , 60.1	EDS
L-test for twinning ²	$\langle L \rangle = 0.50$, $\langle L^2 \rangle = 0.33$	Xtrriage
Estimated twinning fraction	No twinning to report.	Xtrriage
F_o, F_c correlation	0.94	EDS
Total number of atoms	8547	wwPDB-VP
Average B, all atoms (Å ²)	48.0	wwPDB-VP

Xtrriage's analysis on translational NCS is as follows: *The largest off-origin peak in the Patterson function is 6.18% of the height of the origin peak. No significant pseudotranslation is detected.*

¹Intensities estimated from amplitudes.

²Theoretical values of $\langle |L| \rangle$, $\langle L^2 \rangle$ for acentric reflections are 0.5, 0.333 respectively for untwinned datasets, and 0.375, 0.2 for perfectly twinned datasets.

5 Model quality [i](#)

5.1 Standard geometry [i](#)

Bond lengths and bond angles in the following residue types are not validated in this section: CL, K0X

The Z score for a bond length (or angle) is the number of standard deviations the observed value is removed from the expected value. A bond length (or angle) with $|Z| > 5$ is considered an outlier worth inspection. RMSZ is the root-mean-square of all Z scores of the bond lengths (or angles).

Mol	Chain	Bond lengths		Bond angles	
		RMSZ	# Z >5	RMSZ	# Z >5
1	A	0.67	1/2144 (0.0%)	0.75	2/2894 (0.1%)
1	B	0.62	0/2100	0.69	0/2837
All	All	0.65	1/4244 (0.0%)	0.72	2/5731 (0.0%)

All (1) bond length outliers are listed below:

Mol	Chain	Res	Type	Atoms	Z	Observed(Å)	Ideal(Å)
1	A	578	GLU	CA-CB	-5.29	1.42	1.53

All (2) bond angle outliers are listed below:

Mol	Chain	Res	Type	Atoms	Z	Observed(°)	Ideal(°)
1	A	687	ARG	NE-CZ-NH1	-9.80	115.40	120.30
1	A	782	ASP	CB-CG-OD1	5.91	123.62	118.30

There are no chirality outliers.

There are no planarity outliers.

5.2 Too-close contacts [i](#)

In the following table, the Non-H and H(model) columns list the number of non-hydrogen atoms and hydrogen atoms in the chain respectively. The H(added) column lists the number of hydrogen atoms added and optimized by MolProbity. The Clashes column lists the number of clashes within the asymmetric unit, whereas Symm-Clashes lists symmetry-related clashes.

Mol	Chain	Non-H	H(model)	H(added)	Clashes	Symm-Clashes
1	A	2095	2102	2088	17	0
1	B	2050	2064	2052	15	0
2	A	3	0	0	2	0

Continued on next page...

Continued from previous page...

Mol	Chain	Non-H	H(model)	H(added)	Clashes	Symm-Clashes
2	B	2	0	0	0	0
3	A	34	34	0	0	0
3	B	34	34	0	0	0
4	A	50	0	0	1	0
4	B	45	0	0	1	0
All	All	4313	4234	4140	32	0

The all-atom clashscore is defined as the number of clashes found per 1000 atoms (including hydrogen atoms). The all-atom clashscore for this structure is 4.

All (32) close contacts within the same asymmetric unit are listed below, sorted by their clash magnitude.

Atom-1	Atom-2	Interatomic distance (Å)	Clash overlap (Å)
1:A:584:ARG:NH2	2:A:901:CL:CL	2.55	0.71
1:A:774:ASP:OD1	1:A:774:ASP:N	2.24	0.69
1:B:695:ILE:O	1:B:796:ARG:NH2	2.32	0.57
1:B:592:ILE:HD13	1:B:602:MET:SD	2.48	0.54
1:B:824:ASP:OD1	1:B:824:ASP:N	2.41	0.52
1:A:631:ILE:HG23	1:A:632:GLU:H	1.76	0.50
1:A:592:ILE:CD1	1:A:602:MET:HG2	2.42	0.49
1:A:701:LEU:HD21	1:A:829:LEU:HD13	1.94	0.48
1:A:786:PHE:CE2	1:A:790:MET:SD	3.06	0.48
1:B:651:ARG:O	1:B:672:PRO:HD3	2.14	0.48
1:A:652:LEU:HD11	1:A:669:VAL:HG13	1.99	0.45
1:A:579:ASP:OD1	1:A:579:ASP:N	2.50	0.45
1:B:588:ILE:CD1	4:B:1041:HOH:O	2.64	0.45
1:B:784:TRP:CE3	1:B:837:TRP:HA	2.53	0.44
1:A:651:ARG:O	1:A:672:PRO:HD3	2.17	0.44
1:B:635:LEU:N	1:B:635:LEU:HD12	2.33	0.44
1:B:633:GLU:HG2	1:B:634:PHE:H	1.83	0.44
1:A:802:PRO:HD2	2:A:902:CL:CL	2.56	0.43
1:B:603:GLU:O	1:B:603:GLU:HG3	2.18	0.43
1:B:592:ILE:CD1	1:B:602:MET:SD	3.07	0.42
1:B:689:GLU:O	1:B:690:THR:HG23	2.19	0.42
1:B:693:LYS:O	1:B:694:HIS:C	2.57	0.42
1:A:834:TYR:HA	1:A:837:TRP:CE3	2.54	0.41
1:A:784:TRP:CE3	1:A:837:TRP:HA	2.56	0.41
1:A:830:TYR:HA	1:A:833:MET:HG2	2.03	0.41
1:A:722:ARG:NH2	1:A:777:TYR:CD2	2.89	0.41
1:B:791:TRP:CZ3	1:B:800:PRO:HA	2.55	0.41
1:A:777:TYR:HD1	4:A:1015:HOH:O	2.03	0.41

Continued on next page...

Continued from previous page...

Atom-1	Atom-2	Interatomic distance (Å)	Clash overlap (Å)
1:B:689:GLU:O	1:B:690:THR:CB	2.68	0.41
1:A:689:GLU:O	1:A:690:THR:CB	2.69	0.40
1:A:695:ILE:O	1:A:796:ARG:NH2	2.46	0.40
1:B:800:PRO:HB3	1:B:819:LEU:HD21	2.02	0.40

There are no symmetry-related clashes.

5.3 Torsion angles [i](#)

5.3.1 Protein backbone [i](#)

In the following table, the Percentiles column shows the percent Ramachandran outliers of the chain as a percentile score with respect to all X-ray entries followed by that with respect to entries of similar resolution.

The Analysed column shows the number of residues for which the backbone conformation was analysed, and the total number of residues.

Mol	Chain	Analysed	Favoured	Allowed	Outliers	Percentiles	
1	A	252/313 (80%)	236 (94%)	16 (6%)	0	100	100
1	B	248/313 (79%)	240 (97%)	7 (3%)	1 (0%)	34	35
All	All	500/626 (80%)	476 (95%)	23 (5%)	1 (0%)	47	53

All (1) Ramachandran outliers are listed below:

Mol	Chain	Res	Type
1	B	690	THR

5.3.2 Protein sidechains [i](#)

In the following table, the Percentiles column shows the percent sidechain outliers of the chain as a percentile score with respect to all X-ray entries followed by that with respect to entries of similar resolution.

The Analysed column shows the number of residues for which the sidechain conformation was analysed, and the total number of residues.

Mol	Chain	Analysed	Rotameric	Outliers	Percentiles	
1	A	237/280 (85%)	233 (98%)	4 (2%)	60	68

Continued on next page...

Continued from previous page...

Mol	Chain	Analysed	Rotameric	Outliers	Percentiles	
1	B	231/280 (82%)	229 (99%)	2 (1%)	78	84
All	All	468/560 (84%)	462 (99%)	6 (1%)	69	76

All (6) residues with a non-rotameric sidechain are listed below:

Mol	Chain	Res	Type
1	A	579	ASP
1	A	774	ASP
1	A	860	SER
1	A	863	ASP
1	B	613	SER
1	B	689	GLU

Sometimes sidechains can be flipped to improve hydrogen bonding and reduce clashes. There are no such sidechains identified.

5.3.3 RNA [i](#)

There are no RNA molecules in this entry.

5.4 Non-standard residues in protein, DNA, RNA chains [i](#)

There are no non-standard protein/DNA/RNA residues in this entry.

5.5 Carbohydrates [i](#)

There are no monosaccharides in this entry.

5.6 Ligand geometry [i](#)

Of 7 ligands modelled in this entry, 5 are monoatomic - leaving 2 for Mogul analysis.

In the following table, the Counts columns list the number of bonds (or angles) for which Mogul statistics could be retrieved, the number of bonds (or angles) that are observed in the model and the number of bonds (or angles) that are defined in the Chemical Component Dictionary. The Link column lists molecule types, if any, to which the group is linked. The Z score for a bond length (or angle) is the number of standard deviations the observed value is removed from the expected value. A bond length (or angle) with $|Z| > 2$ is considered an outlier worth inspection. RMSZ is the root-mean-square of all Z scores of the bond lengths (or angles).

Mol	Type	Chain	Res	Link	Bond lengths			Bond angles		
					Counts	RMSZ	# Z > 2	Counts	RMSZ	# Z > 2
3	K0X	B	903	-	36,36,36	3.02	10 (27%)	44,46,46	3.31	10 (22%)
3	K0X	A	904	-	36,36,36	3.08	13 (36%)	44,46,46	3.98	11 (25%)

In the following table, the Chirals column lists the number of chiral outliers, the number of chiral centers analysed, the number of these observed in the model and the number defined in the Chemical Component Dictionary. Similar counts are reported in the Torsion and Rings columns. '-' means no outliers of that kind were identified.

Mol	Type	Chain	Res	Link	Chirals	Torsions	Rings
3	K0X	B	903	-	-	13/32/32/32	0/2/3/3
3	K0X	A	904	-	-	13/32/32/32	0/2/3/3

All (23) bond length outliers are listed below:

Mol	Chain	Res	Type	Atoms	Z	Observed(Å)	Ideal(Å)
3	A	904	K0X	C10-N11	9.45	1.48	1.34
3	A	904	K0X	C08-N07	9.36	1.49	1.34
3	B	903	K0X	C08-N07	9.27	1.49	1.34
3	B	903	K0X	C10-N11	7.63	1.46	1.34
3	B	903	K0X	C24-N26	6.48	1.48	1.33
3	A	904	K0X	C24-N26	6.33	1.47	1.33
3	B	903	K0X	C19-N18	6.12	1.47	1.33
3	A	904	K0X	C19-N18	5.78	1.46	1.33
3	B	903	K0X	C22-N21	4.24	1.43	1.34
3	B	903	K0X	C08-N09	-3.61	1.27	1.34
3	B	903	K0X	C23-C08	-3.52	1.38	1.42
3	B	903	K0X	C27-C28	3.33	1.58	1.51
3	A	904	K0X	C22-N21	3.07	1.40	1.34
3	B	903	K0X	C23-C24	3.03	1.56	1.50
3	A	904	K0X	C08-N09	-3.00	1.29	1.34
3	A	904	K0X	C23-C24	2.97	1.56	1.50
3	A	904	K0X	C27-C28	2.96	1.57	1.51
3	A	904	K0X	C10-N21	2.37	1.38	1.34
3	B	903	K0X	O25-C24	-2.19	1.18	1.23
3	A	904	K0X	C22-C23	2.13	1.44	1.40
3	A	904	K0X	C06-N07	2.13	1.50	1.45
3	A	904	K0X	O25-C24	-2.03	1.19	1.23
3	A	904	K0X	C23-C08	-2.02	1.40	1.42

All (21) bond angle outliers are listed below:

Mol	Chain	Res	Type	Atoms	Z	Observed(°)	Ideal(°)
3	A	904	K0X	N21-C10-N09	-18.20	109.31	126.55
3	B	903	K0X	N21-C10-N09	-13.80	113.48	126.55
3	A	904	K0X	C23-C22-N21	-12.35	105.65	124.28
3	B	903	K0X	C23-C22-N21	-10.54	108.39	124.28
3	A	904	K0X	C22-C23-C08	9.99	124.33	114.55
3	B	903	K0X	C22-C23-C08	8.86	123.23	114.55
3	B	903	K0X	C22-N21-C10	5.13	123.62	115.88
3	A	904	K0X	C23-C08-N07	3.87	123.70	121.84
3	A	904	K0X	C22-N21-C10	3.64	121.38	115.88
3	B	903	K0X	C23-C08-N07	-3.40	120.20	121.84
3	A	904	K0X	C08-C23-C24	-3.20	119.62	120.69
3	B	903	K0X	C08-C23-C24	3.03	121.70	120.69
3	A	904	K0X	C33-C31-C30	-3.02	118.82	122.83
3	A	904	K0X	O20-C19-N18	-2.88	116.80	122.99
3	A	904	K0X	C29-C30-C31	2.84	121.30	118.36
3	B	903	K0X	N11-C10-N09	2.65	121.78	117.19
3	B	903	K0X	C33-C31-C30	-2.42	119.61	122.83
3	A	904	K0X	C17-N18-C19	-2.40	118.30	122.59
3	B	903	K0X	C04-C03-C02	-2.28	106.00	113.35
3	A	904	K0X	O25-C24-N26	-2.26	118.10	122.61
3	B	903	K0X	O25-C24-N26	-2.01	118.60	122.61

There are no chirality outliers.

All (26) torsion outliers are listed below:

Mol	Chain	Res	Type	Atoms
3	A	904	K0X	C03-C02-C19-N18
3	A	904	K0X	C03-C02-C19-O20
3	B	903	K0X	N09-C10-N11-C12
3	B	903	K0X	C03-C02-C19-N18
3	B	903	K0X	C03-C02-C19-O20
3	A	904	K0X	C14-C15-C16-C17
3	B	903	K0X	C14-C15-C16-C17
3	B	903	K0X	C12-C13-C14-C15
3	A	904	K0X	C12-C13-C14-C15
3	B	903	K0X	C16-C17-N18-C19
3	B	903	K0X	C22-C23-C24-O25
3	A	904	K0X	C15-C16-C17-N18
3	B	903	K0X	C15-C16-C17-N18
3	A	904	K0X	C22-C23-C24-O25
3	A	904	K0X	N09-C10-N11-C12
3	B	903	K0X	C13-C12-N11-C10
3	B	903	K0X	C04-C05-C06-N07

Continued on next page...

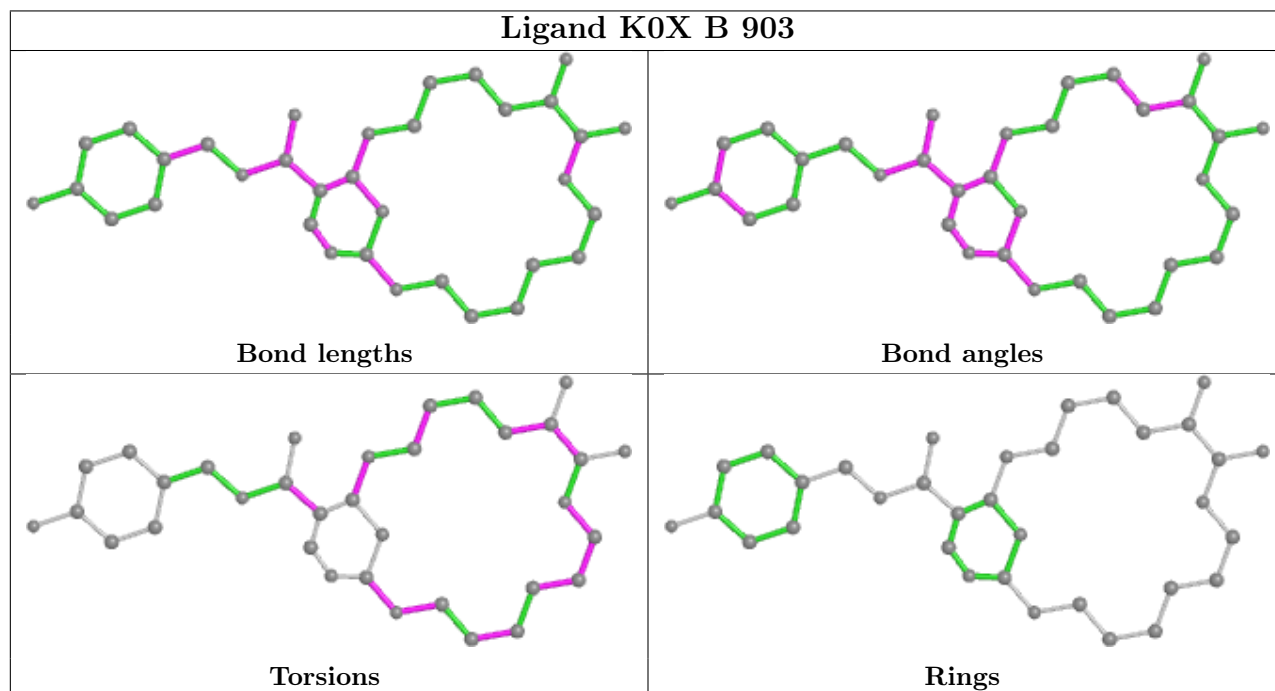
Continued from previous page...

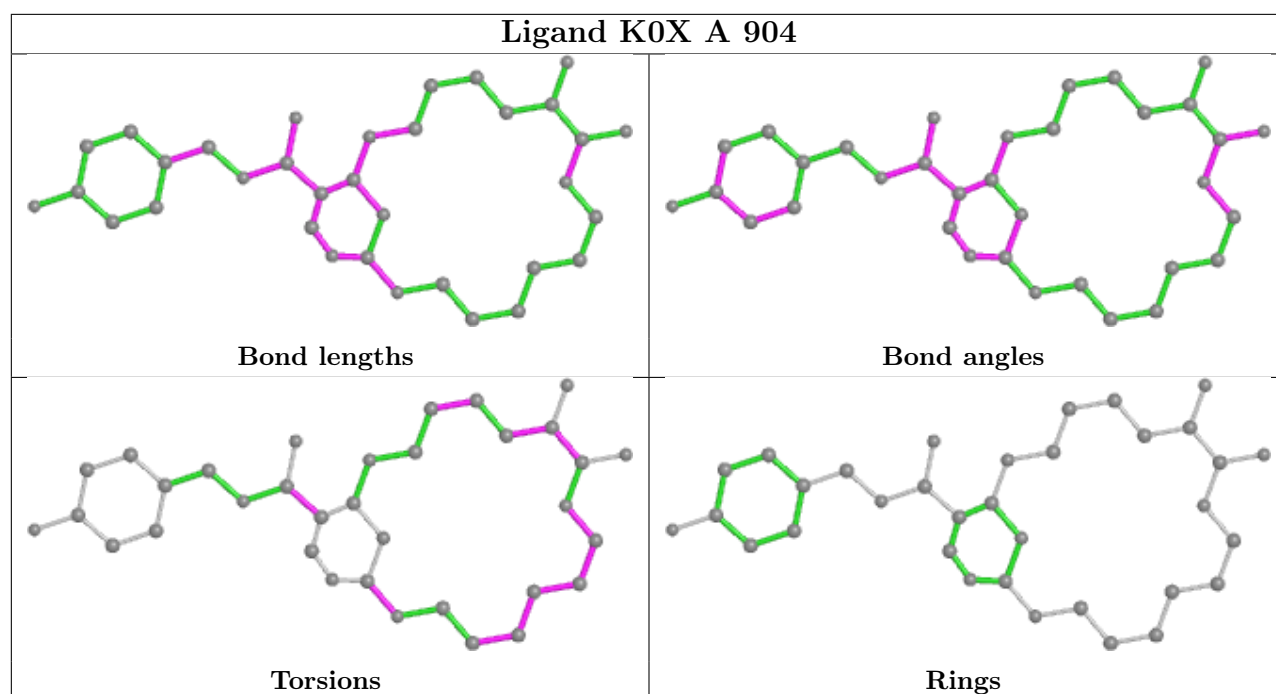
Mol	Chain	Res	Type	Atoms
3	A	904	K0X	C16-C17-N18-C19
3	A	904	K0X	C13-C14-C15-C16
3	A	904	K0X	C22-C23-C24-N26
3	B	903	K0X	C22-C23-C24-N26
3	B	903	K0X	N09-C08-N07-C06
3	A	904	K0X	C03-C04-C05-C06
3	A	904	K0X	C19-C02-C03-C04
3	A	904	K0X	N01-C02-C03-C04
3	B	903	K0X	N01-C02-C03-C04

There are no ring outliers.

No monomer is involved in short contacts.

The following is a two-dimensional graphical depiction of Mogul quality analysis of bond lengths, bond angles, torsion angles, and ring geometry for all instances of the Ligand of Interest. In addition, ligands with molecular weight > 250 and outliers as shown on the validation Tables will also be included. For torsion angles, if less than 5% of the Mogul distribution of torsion angles is within 10 degrees of the torsion angle in question, then that torsion angle is considered an outlier. Any bond that is central to one or more torsion angles identified as an outlier by Mogul will be highlighted in the graph. For rings, the root-mean-square deviation (RMSD) between the ring in question and similar rings identified by Mogul is calculated over all ring torsion angles. If the average RMSD is greater than 60 degrees and the minimal RMSD between the ring in question and any Mogul-identified rings is also greater than 60 degrees, then that ring is considered an outlier. The outliers are highlighted in purple. The color gray indicates Mogul did not find sufficient equivalents in the CSD to analyse the geometry.





5.7 Other polymers [i](#)

There are no such residues in this entry.

5.8 Polymer linkage issues [i](#)

There are no chain breaks in this entry.

6 Fit of model and data

6.1 Protein, DNA and RNA chains

In the following table, the column labelled ‘#RSRZ > 2’ contains the number (and percentage) of RSRZ outliers, followed by percent RSRZ outliers for the chain as percentile scores relative to all X-ray entries and entries of similar resolution. The OWAB column contains the minimum, median, 95th percentile and maximum values of the occupancy-weighted average B-factor per residue. The column labelled ‘Q < 0.9’ lists the number of (and percentage) of residues with an average occupancy less than 0.9.

Mol	Chain	Analysed	<RSRZ>	#RSRZ>2	OWAB(Å ²)	Q<0.9
1	A	258/313 (82%)	0.56	30 (11%) 4 3	18, 39, 91, 129	0
1	B	254/313 (81%)	0.52	25 (9%) 7 7	17, 39, 85, 101	0
All	All	512/626 (81%)	0.54	55 (10%) 6 5	17, 39, 89, 129	0

All (55) RSRZ outliers are listed below:

Mol	Chain	Res	Type	RSRZ
1	A	631	ILE	8.3
1	A	775	ARG	7.0
1	B	598	PHE	5.8
1	B	577	LEU	5.5
1	A	595	GLU	4.8
1	B	657	ILE	4.6
1	B	863	ASP	4.6
1	B	777	TYR	4.4
1	A	814	LEU	4.2
1	B	664	ILE	4.1
1	B	814	LEU	3.9
1	A	632	GLU	3.9
1	B	776	VAL	3.8
1	A	863	ASP	3.8
1	B	636	SER	3.6
1	B	659	MET	3.4
1	B	663	GLY	3.3
1	B	773	ALA	3.2
1	A	636	SER	3.1
1	A	776	VAL	3.1
1	B	595	GLU	3.0
1	B	666	LYS	3.0
1	A	862	PRO	2.9
1	A	824	ASP	2.9

Continued on next page...

Continued from previous page...

Mol	Chain	Res	Type	RSRZ
1	B	575	ASN	2.9
1	B	774	ASP	2.9
1	A	657	ILE	2.8
1	B	775	ARG	2.8
1	A	577	LEU	2.7
1	A	773	ALA	2.7
1	A	789	THR	2.7
1	B	810	TYR	2.7
1	A	622	LYS	2.7
1	A	609	GLU	2.7
1	A	658	GLU	2.6
1	A	810	TYR	2.6
1	A	666	LYS	2.4
1	B	786	PHE	2.4
1	B	807	HIS	2.4
1	A	599	GLY	2.4
1	A	786	PHE	2.4
1	B	693	LYS	2.3
1	A	579	ASP	2.3
1	A	623	LEU	2.3
1	B	633	GLU	2.2
1	A	621	MET	2.2
1	A	640	CYS	2.2
1	B	578	GLU	2.2
1	A	777	TYR	2.2
1	A	635	LEU	2.2
1	A	576	LYS	2.2
1	B	576	LYS	2.1
1	A	790	MET	2.1
1	A	634	PHE	2.1
1	B	579	ASP	2.0

6.2 Non-standard residues in protein, DNA, RNA chains [i](#)

There are no non-standard protein/DNA/RNA residues in this entry.

6.3 Carbohydrates [i](#)

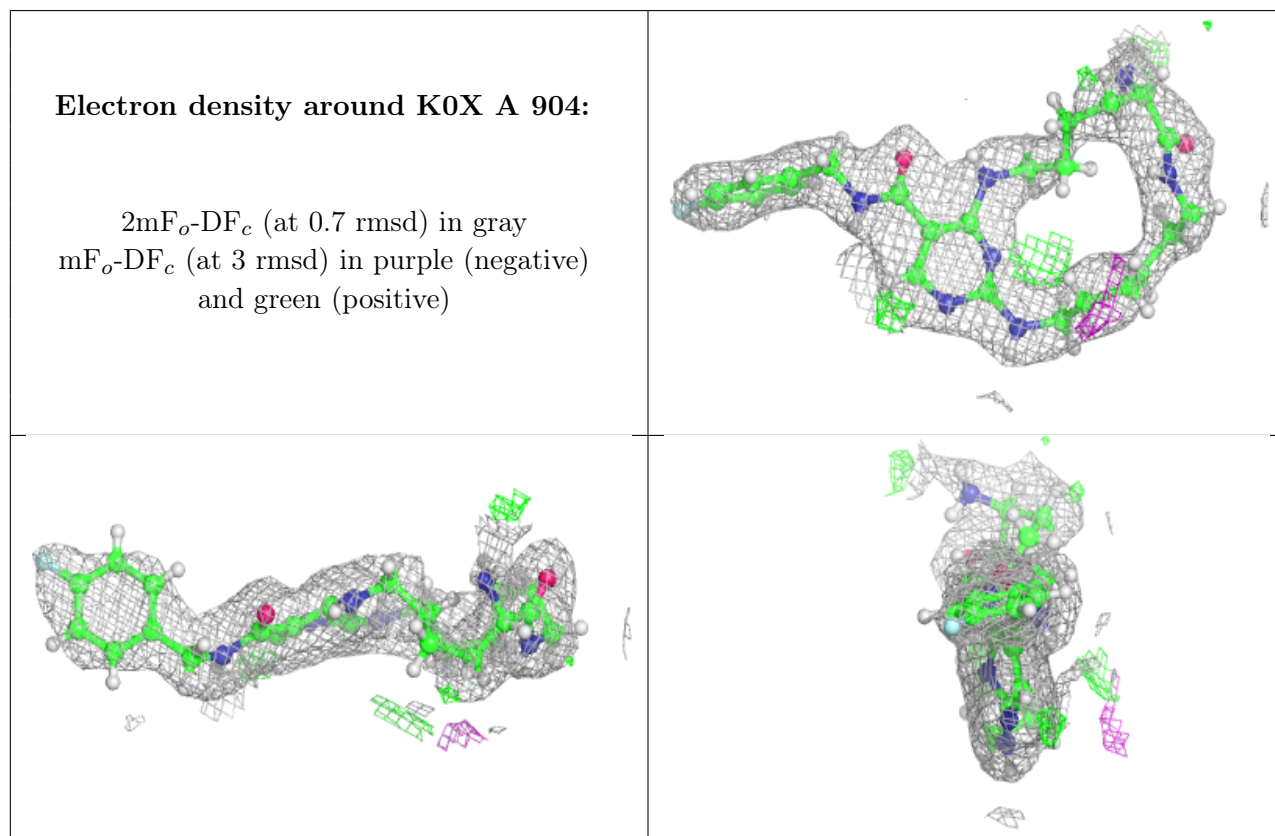
There are no monosaccharides in this entry.

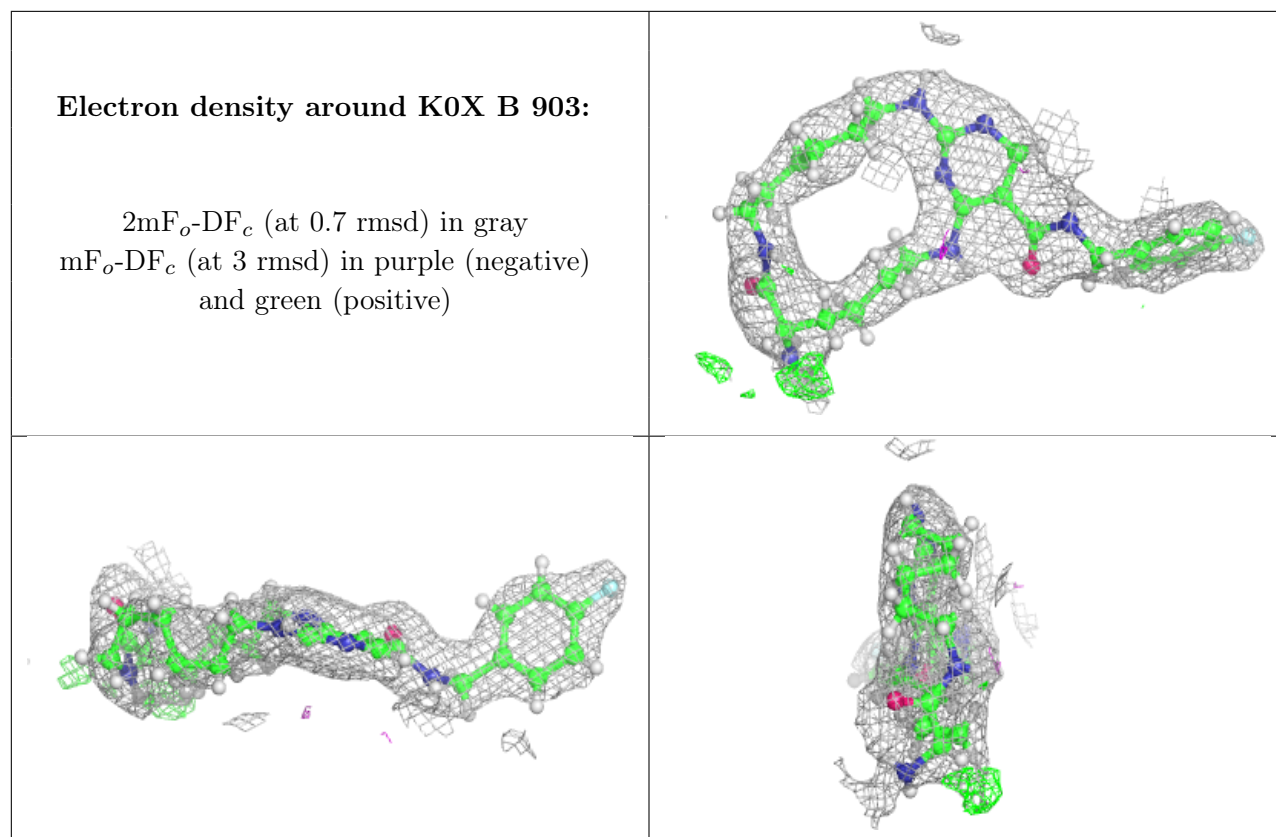
6.4 Ligands [i](#)

In the following table, the Atoms column lists the number of modelled atoms in the group and the number defined in the chemical component dictionary. The B-factors column lists the minimum, median, 95th percentile and maximum values of B factors of atoms in the group. The column labelled 'Q< 0.9' lists the number of atoms with occupancy less than 0.9.

Mol	Type	Chain	Res	Atoms	RSCC	RSR	B-factors(Å ²)	Q<0.9
2	CL	A	901	1/1	0.94	0.07	51,51,51,51	0
3	K0X	A	904	34/34	0.94	0.16	19,49,72,83	0
3	K0X	B	903	34/34	0.94	0.14	23,50,72,86	0
2	CL	B	902	1/1	0.96	0.07	51,51,51,51	0
2	CL	A	902	1/1	0.99	0.11	25,25,25,25	0
2	CL	A	903	1/1	0.99	0.15	33,33,33,33	0
2	CL	B	901	1/1	0.99	0.07	24,24,24,24	0

The following is a graphical depiction of the model fit to experimental electron density of all instances of the Ligand of Interest. In addition, ligands with molecular weight > 250 and outliers as shown on the geometry validation Tables will also be included. Each fit is shown from different orientation to approximate a three-dimensional view.





6.5 Other polymers [i](#)

There are no such residues in this entry.