



Full wwPDB X-ray Structure Validation Report ⓘ

Jun 22, 2024 – 11:12 AM EDT

PDB ID : 5JDC
Title : Trypanosoma brucei PTR1 in complex with inhibitor NP-13 (Hesperetin)
Authors : Mangani, S.; Pozzi, C.; Di Pisa, F.; Landi, G.; Dello Iacono, L.
Deposited on : 2016-04-16
Resolution : 1.78 Å(reported)

This is a Full wwPDB X-ray Structure Validation Report for a publicly released PDB entry.

We welcome your comments at validation@mail.wwpdb.org

A user guide is available at

<https://www.wwpdb.org/validation/2017/XrayValidationReportHelp>

with specific help available everywhere you see the ⓘ symbol.

The types of validation reports are described at

<http://www.wwpdb.org/validation/2017/FAQs#types>.

The following versions of software and data (see [references ⓘ](#)) were used in the production of this report:

MolProbity : 4.02b-467
Mogul : 1.8.5 (274361), CSD as541be (2020)
Xtriage (Phenix) : 1.13
EDS : 2.37.1
buster-report : 1.1.7 (2018)
Percentile statistics : 20191225.v01 (using entries in the PDB archive December 25th 2019)
Refmac : 5.8.0158
CCP4 : 7.0.044 (Gargrove)
Ideal geometry (proteins) : Engh & Huber (2001)
Ideal geometry (DNA, RNA) : Parkinson et al. (1996)
Validation Pipeline (wwPDB-VP) : 2.37.1

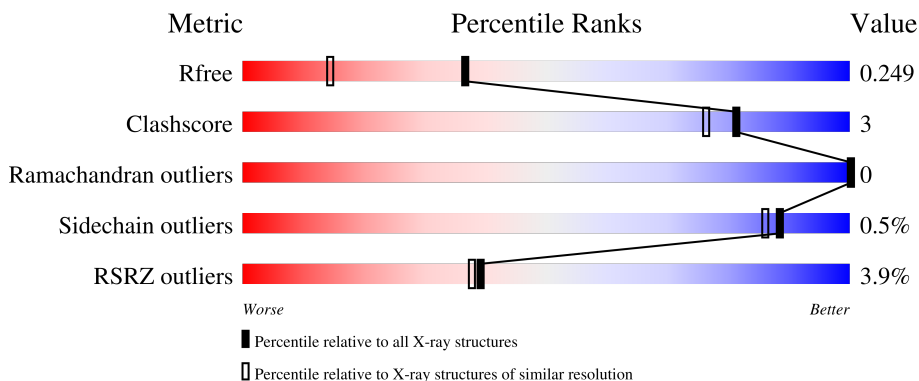
1 Overall quality at a glance

The following experimental techniques were used to determine the structure:

X-RAY DIFFRACTION

The reported resolution of this entry is 1.78 Å.

Percentile scores (ranging between 0-100) for global validation metrics of the entry are shown in the following graphic. The table shows the number of entries on which the scores are based.



Metric	Whole archive (#Entries)	Similar resolution (#Entries, resolution range(Å))
R_{free}	130704	9185 (1.80-1.76)
Clashscore	141614	10184 (1.80-1.76)
Ramachandran outliers	138981	10051 (1.80-1.76)
Sidechain outliers	138945	10050 (1.80-1.76)
RSRZ outliers	127900	9032 (1.80-1.76)

The table below summarises the geometric issues observed across the polymeric chains and their fit to the electron density. The red, orange, yellow and green segments of the lower bar indicate the fraction of residues that contain outliers for ≥ 3 , 2, 1 and 0 types of geometric quality criteria respectively. A grey segment represents the fraction of residues that are not modelled. The numeric value for each fraction is indicated below the corresponding segment, with a dot representing fractions $\leq 5\%$. The upper red bar (where present) indicates the fraction of residues that have poor fit to the electron density. The numeric value is given above the bar.

Mol	Chain	Length	Quality of chain
1	A	288	 3% 81% 5% 14%
1	B	288	 % 82% • 15%
1	D	288	 4% 81% 6% 14%
2	C	288	 6% 77% 6% 17%

2 Entry composition

There are 7 unique types of molecules in this entry. The entry contains 7836 atoms, of which 0 are hydrogens and 0 are deuteriums.

In the tables below, the ZeroOcc column contains the number of atoms modelled with zero occupancy, the AltConf column contains the number of residues with at least one atom in alternate conformation and the Trace column contains the number of residues modelled with at most 2 atoms.

- Molecule 1 is a protein called Pteridine reductase.

Mol	Chain	Residues	Atoms					ZeroOcc	AltConf	Trace
			Total	C	N	O	S			
1	A	249	Total 1845	C 1161	N 326	O 347	S 11	0	0	0
1	B	246	Total 1838	C 1156	N 320	O 350	S 12	0	3	0
1	D	248	Total 1831	C 1152	N 325	O 343	S 11	0	2	0

There are 60 discrepancies between the modelled and reference sequences:

Chain	Residue	Modelled	Actual	Comment	Reference
A	-19	MET	-	initiating methionine	UNP O76290
A	-18	GLY	-	expression tag	UNP O76290
A	-17	SER	-	expression tag	UNP O76290
A	-16	SER	-	expression tag	UNP O76290
A	-15	HIS	-	expression tag	UNP O76290
A	-14	HIS	-	expression tag	UNP O76290
A	-13	HIS	-	expression tag	UNP O76290
A	-12	HIS	-	expression tag	UNP O76290
A	-11	HIS	-	expression tag	UNP O76290
A	-10	HIS	-	expression tag	UNP O76290
A	-9	SER	-	expression tag	UNP O76290
A	-8	SER	-	expression tag	UNP O76290
A	-7	GLY	-	expression tag	UNP O76290
A	-6	LEU	-	expression tag	UNP O76290
A	-5	VAL	-	expression tag	UNP O76290
A	-4	PRO	-	expression tag	UNP O76290
A	-3	ARG	-	expression tag	UNP O76290
A	-2	GLY	-	expression tag	UNP O76290
A	-1	SER	-	expression tag	UNP O76290
A	0	HIS	-	expression tag	UNP O76290
B	-19	MET	-	initiating methionine	UNP O76290
B	-18	GLY	-	expression tag	UNP O76290
B	-17	SER	-	expression tag	UNP O76290

Continued on next page...

Continued from previous page...

Chain	Residue	Modelled	Actual	Comment	Reference
B	-16	SER	-	expression tag	UNP O76290
B	-15	HIS	-	expression tag	UNP O76290
B	-14	HIS	-	expression tag	UNP O76290
B	-13	HIS	-	expression tag	UNP O76290
B	-12	HIS	-	expression tag	UNP O76290
B	-11	HIS	-	expression tag	UNP O76290
B	-10	HIS	-	expression tag	UNP O76290
B	-9	SER	-	expression tag	UNP O76290
B	-8	SER	-	expression tag	UNP O76290
B	-7	GLY	-	expression tag	UNP O76290
B	-6	LEU	-	expression tag	UNP O76290
B	-5	VAL	-	expression tag	UNP O76290
B	-4	PRO	-	expression tag	UNP O76290
B	-3	ARG	-	expression tag	UNP O76290
B	-2	GLY	-	expression tag	UNP O76290
B	-1	SER	-	expression tag	UNP O76290
B	0	HIS	-	expression tag	UNP O76290
D	-19	MET	-	initiating methionine	UNP O76290
D	-18	GLY	-	expression tag	UNP O76290
D	-17	SER	-	expression tag	UNP O76290
D	-16	SER	-	expression tag	UNP O76290
D	-15	HIS	-	expression tag	UNP O76290
D	-14	HIS	-	expression tag	UNP O76290
D	-13	HIS	-	expression tag	UNP O76290
D	-12	HIS	-	expression tag	UNP O76290
D	-11	HIS	-	expression tag	UNP O76290
D	-10	HIS	-	expression tag	UNP O76290
D	-9	SER	-	expression tag	UNP O76290
D	-8	SER	-	expression tag	UNP O76290
D	-7	GLY	-	expression tag	UNP O76290
D	-6	LEU	-	expression tag	UNP O76290
D	-5	VAL	-	expression tag	UNP O76290
D	-4	PRO	-	expression tag	UNP O76290
D	-3	ARG	-	expression tag	UNP O76290
D	-2	GLY	-	expression tag	UNP O76290
D	-1	SER	-	expression tag	UNP O76290
D	0	HIS	-	expression tag	UNP O76290

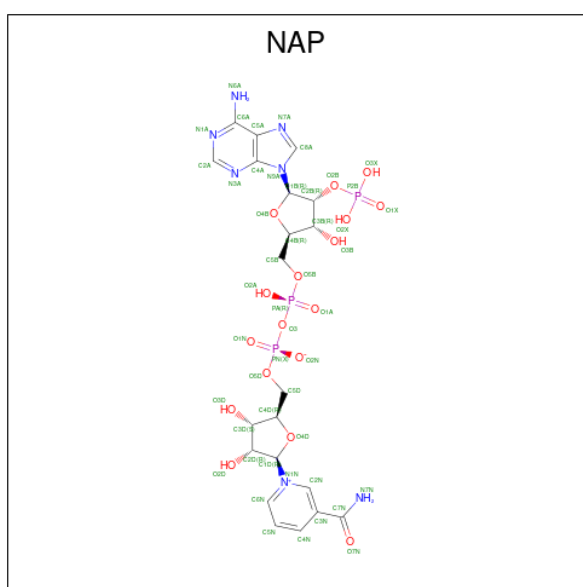
- Molecule 2 is a protein called Pteridine reductase.

Mol	Chain	Residues	Atoms					ZeroOcc	AltConf	Trace
			Total	C	N	O	S			
2	C	239	1771	1114	313	334	10	0	0	0

There are 20 discrepancies between the modelled and reference sequences:

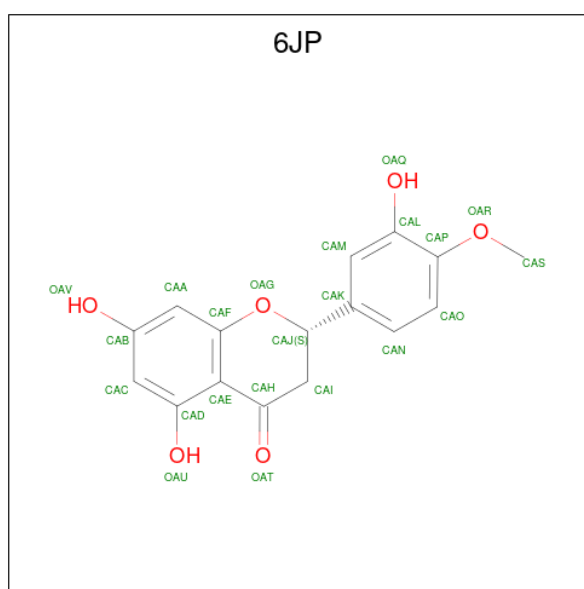
Chain	Residue	Modelled	Actual	Comment	Reference
C	-19	MET	-	initiating methionine	UNP O76290
C	-18	GLY	-	expression tag	UNP O76290
C	-17	SER	-	expression tag	UNP O76290
C	-16	SER	-	expression tag	UNP O76290
C	-15	HIS	-	expression tag	UNP O76290
C	-14	HIS	-	expression tag	UNP O76290
C	-13	HIS	-	expression tag	UNP O76290
C	-12	HIS	-	expression tag	UNP O76290
C	-11	HIS	-	expression tag	UNP O76290
C	-10	HIS	-	expression tag	UNP O76290
C	-9	SER	-	expression tag	UNP O76290
C	-8	SER	-	expression tag	UNP O76290
C	-7	GLY	-	expression tag	UNP O76290
C	-6	LEU	-	expression tag	UNP O76290
C	-5	VAL	-	expression tag	UNP O76290
C	-4	PRO	-	expression tag	UNP O76290
C	-3	ARG	-	expression tag	UNP O76290
C	-2	GLY	-	expression tag	UNP O76290
C	-1	SER	-	expression tag	UNP O76290
C	0	HIS	-	expression tag	UNP O76290

- Molecule 3 is NADP NICOTINAMIDE-ADENINE-DINUCLEOTIDE PHOSPHATE (three-letter code: NAP) (formula: C₂₁H₂₈N₇O₁₇P₃).



Mol	Chain	Residues	Atoms				ZeroOcc	AltConf	
3	A	1	Total	C	N	O	P	0	0
			48	21	7	17	3		
3	B	1	Total	C	N	O	P	0	0
			48	21	7	17	3		
3	C	1	Total	C	N	O	P	0	0
			48	21	7	17	3		
3	D	1	Total	C	N	O	P	0	0
			48	21	7	17	3		

- Molecule 4 is (2S)-5,7-dihydroxy-2-(3-hydroxy-4-methoxyphenyl)-2,3-dihydro-4H-1-benzopyran-4-one (three-letter code: 6JP) (formula: C₁₆H₁₄O₆).



Mol	Chain	Residues	Atoms		ZeroOcc	AltConf
4	A	1	Total	C O	0	0
			22	16 6		
4	B	1	Total	C O	0	0
			22	16 6		
4	C	1	Total	C O	0	0
			22	16 6		
4	D	1	Total	C O	0	0
			22	16 6		

- Molecule 5 is ACETATE ION (three-letter code: ACT) (formula: C₂H₃O₂).



Mol	Chain	Residues	Atoms			ZeroOcc	AltConf
5	A	1	Total	C	O	0	0
			4	2	2		
5	C	1	Total	C	O	0	0
			4	2	2		

- Molecule 6 is GLYCEROL (three-letter code: GOL) (formula: $C_3H_8O_3$).



Mol	Chain	Residues	Atoms			ZeroOcc	AltConf
6	C	1	Total	C	O	0	0
			6	3	3		

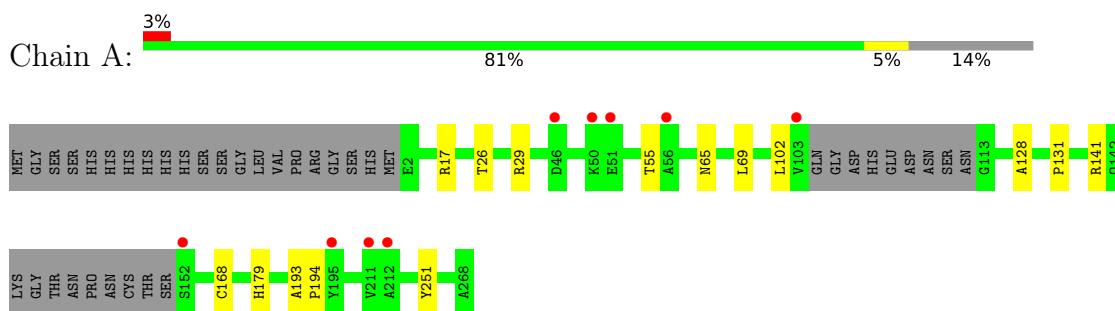
- Molecule 7 is water.

Mol	Chain	Residues	Atoms	ZeroOcc	AltConf
7	A	66	Total O 66 66	0	0
7	B	86	Total O 86 86	0	0
7	C	54	Total O 54 54	0	0
7	D	51	Total O 51 51	0	0

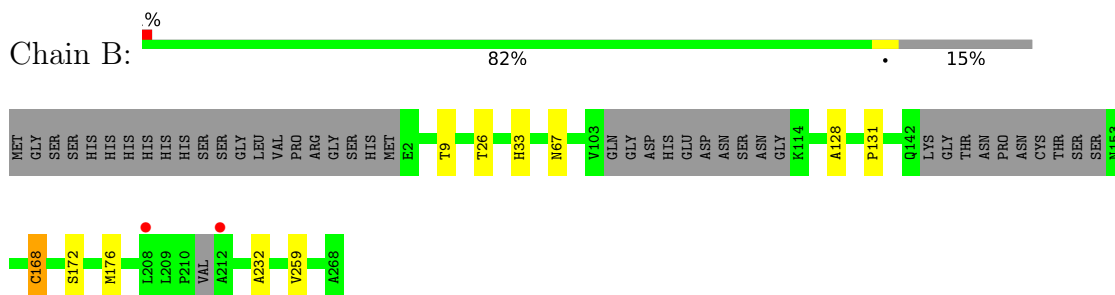
3 Residue-property plots [i](#)

These plots are drawn for all protein, RNA, DNA and oligosaccharide chains in the entry. The first graphic for a chain summarises the proportions of the various outlier classes displayed in the second graphic. The second graphic shows the sequence view annotated by issues in geometry and electron density. Residues are color-coded according to the number of geometric quality criteria for which they contain at least one outlier: green = 0, yellow = 1, orange = 2 and red = 3 or more. A red dot above a residue indicates a poor fit to the electron density ($RSRZ > 2$). Stretches of 2 or more consecutive residues without any outlier are shown as a green connector. Residues present in the sample, but not in the model, are shown in grey.

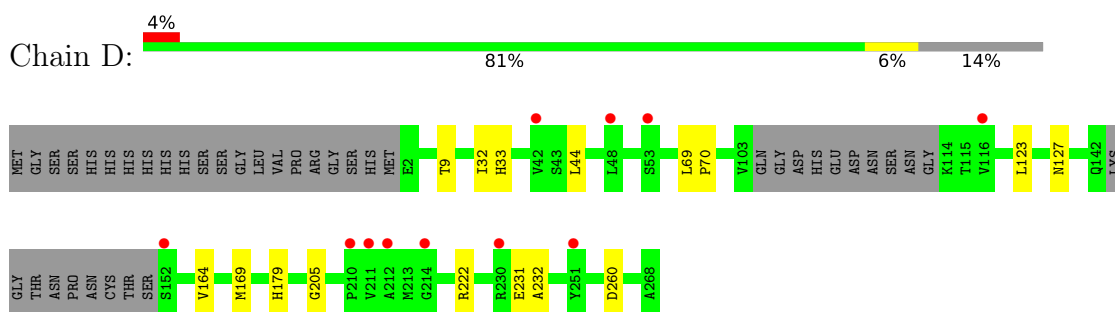
- Molecule 1: Pteridine reductase



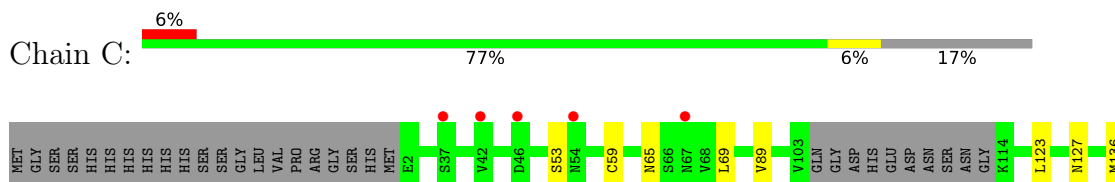
- Molecule 1: Pteridine reductase

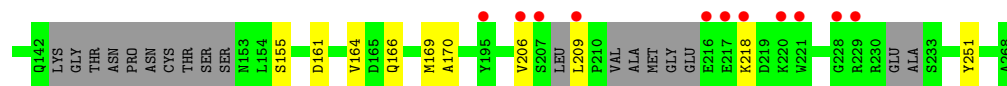


- Molecule 1: Pteridine reductase



- Molecule 2: Pteridine reductase





4 Data and refinement statistics i

Property	Value	Source
Space group	P 1 21 1	Depositor
Cell constants a, b, c, α , β , γ	74.84Å 90.04Å 82.94Å 90.00° 115.78° 90.00°	Depositor
Resolution (Å)	53.68 – 1.78 53.95 – 1.78	Depositor EDS
% Data completeness (in resolution range)	99.1 (53.68-1.78) 99.1 (53.95-1.78)	Depositor EDS
R_{merge}	0.09	Depositor
R_{sym}	(Not available)	Depositor
$\langle I/\sigma(I) \rangle$ ¹	3.45 (at 1.78Å)	Xtrriage
Refinement program	REFMAC 5.8.0135	Depositor
R, R_{free}	0.208 , 0.241 0.222 , 0.249	Depositor DCC
R_{free} test set	4615 reflections (4.91%)	wwPDB-VP
Wilson B-factor (Å ²)	14.5	Xtrriage
Anisotropy	0.507	Xtrriage
Bulk solvent k_{sol} (e/Å ³), B_{sol} (Å ²)	0.38 , 41.5	EDS
L-test for twinning ²	$\langle L \rangle = 0.49$, $\langle L^2 \rangle = 0.33$	Xtrriage
Estimated twinning fraction	0.008 for h,-k,-h-l	Xtrriage
F_o, F_c correlation	0.87	EDS
Total number of atoms	7836	wwPDB-VP
Average B, all atoms (Å ²)	21.0	wwPDB-VP

Xtrriage's analysis on translational NCS is as follows: *The analyses of the Patterson function reveals a significant off-origin peak that is 38.38 % of the origin peak, indicating pseudo-translational symmetry. The chance of finding a peak of this or larger height randomly in a structure without pseudo-translational symmetry is equal to 3.7194e-04. The detected translational NCS is most likely also responsible for the elevated intensity ratio.*

¹Intensities estimated from amplitudes.

²Theoretical values of $\langle |L| \rangle$, $\langle L^2 \rangle$ for acentric reflections are 0.5, 0.333 respectively for untwinned datasets, and 0.375, 0.2 for perfectly twinned datasets.

5 Model quality [i](#)

5.1 Standard geometry [i](#)

Bond lengths and bond angles in the following residue types are not validated in this section: NAP, ACT, 6JP, GOL, CSX, OCS

The Z score for a bond length (or angle) is the number of standard deviations the observed value is removed from the expected value. A bond length (or angle) with $|Z| > 5$ is considered an outlier worth inspection. RMSZ is the root-mean-square of all Z scores of the bond lengths (or angles).

Mol	Chain	Bond lengths		Bond angles	
		RMSZ	# Z >5	RMSZ	# Z >5
1	A	0.84	0/1864	0.86	0/2528
1	B	0.95	1/1855 (0.1%)	0.90	0/2516
1	D	0.86	0/1856	0.91	0/2520
2	C	0.87	0/1777	0.86	0/2408
All	All	0.88	1/7352 (0.0%)	0.88	0/9972

All (1) bond length outliers are listed below:

Mol	Chain	Res	Type	Atoms	Z	Observed(Å)	Ideal(Å)
1	B	259	VAL	C-N	13.19	1.64	1.34

There are no bond angle outliers.

There are no chirality outliers.

There are no planarity outliers.

5.2 Too-close contacts [i](#)

In the following table, the Non-H and H(model) columns list the number of non-hydrogen atoms and hydrogen atoms in the chain respectively. The H(added) column lists the number of hydrogen atoms added and optimized by MolProbity. The Clashes column lists the number of clashes within the asymmetric unit, whereas Symm-Clashes lists symmetry-related clashes.

Mol	Chain	Non-H	H(model)	H(added)	Clashes	Symm-Clashes
1	A	1845	0	1867	13	0
1	B	1838	0	1846	9	0
1	D	1831	0	1846	10	0
2	C	1771	0	1776	10	0
3	A	48	0	25	0	0
3	B	48	0	25	0	0

Continued on next page...

Continued from previous page...

Mol	Chain	Non-H	H(model)	H(added)	Clashes	Symm-Clashes
3	C	48	0	25	0	0
3	D	48	0	25	1	0
4	A	22	0	0	1	0
4	B	22	0	0	3	0
4	C	22	0	0	0	0
4	D	22	0	0	0	0
5	A	4	0	3	1	0
5	C	4	0	3	0	0
6	C	6	0	8	0	0
7	A	66	0	0	1	0
7	B	86	0	0	1	0
7	C	54	0	0	0	0
7	D	51	0	0	0	0
All	All	7836	0	7449	39	0

The all-atom clashscore is defined as the number of clashes found per 1000 atoms (including hydrogen atoms). The all-atom clashscore for this structure is 3.

All (39) close contacts within the same asymmetric unit are listed below, sorted by their clash magnitude.

Atom-1	Atom-2	Interatomic distance (Å)	Clash overlap (Å)
1:B:168[A]:CSX:HG	4:B:302:6JP:CAS	1.81	0.94
2:C:161:ASP:HB3	2:C:164:VAL:HG13	1.76	0.67
1:A:141:ARG:HG2	7:A:465:HOH:O	1.95	0.66
1:A:193:ALA:HB3	1:A:194:PRO:HD3	1.82	0.60
1:A:251:TYR:CE2	1:B:232:ALA:HB2	2.37	0.59
1:A:65:ASN:HA	1:A:69:LEU:HD22	1.88	0.56
2:C:209:LEU:HD13	2:C:218:LYS:HG3	1.88	0.56
1:A:168:CSX:HG	4:A:302:6JP:CAP	2.19	0.55
2:C:209:LEU:HD13	2:C:218:LYS:CG	2.38	0.54
2:C:65:ASN:HA	2:C:69:LEU:HD22	1.91	0.52
1:D:205:GLY:HA3	1:D:260:ASP:HB2	1.92	0.51
1:B:168[A]:CSX:SG	4:B:302:6JP:CAS	2.94	0.51
1:A:17:ARG:HD3	5:A:303:ACT:H3	1.93	0.50
1:B:128:ALA:C	1:B:131:PRO:HD2	2.32	0.50
2:C:251:TYR:CE2	1:D:232:ALA:HB2	2.47	0.49
1:D:69:LEU:N	1:D:70:PRO:HD2	2.27	0.49
1:A:128:ALA:C	1:A:131:PRO:HD2	2.33	0.49
1:A:251:TYR:CD2	1:B:232:ALA:HB2	2.48	0.48
1:A:193:ALA:N	1:A:194:PRO:CD	2.76	0.48
1:D:69:LEU:N	1:D:70:PRO:CD	2.77	0.47

Continued on next page...

Continued from previous page...

Atom-1	Atom-2	Interatomic distance (Å)	Clash overlap (Å)
1:B:172:SER:O	1:B:176:MET:HG3	2.15	0.46
1:D:164:VAL:HG22	1:D:179:HIS:CD2	2.52	0.44
2:C:123:LEU:O	2:C:127:ASN:HB2	2.17	0.44
1:D:205:GLY:O	3:D:301:NAP:H4N	2.16	0.44
1:A:102:LEU:O	2:C:136:MET:HG3	2.17	0.44
2:C:169:MET:O	2:C:170:ALA:HB3	2.19	0.43
4:B:302:6JP:OAT	4:B:302:6JP:OAU	2.37	0.42
2:C:89:VAL:HA	2:C:155:SER:O	2.19	0.42
1:A:29:ARG:HG2	1:A:55:THR:HG22	2.01	0.42
1:B:9:THR:HA	1:B:33:HIS:HB3	2.02	0.42
2:C:206:VAL:O	2:C:206:VAL:HG23	2.19	0.41
1:D:9:THR:HA	1:D:33:HIS:HB3	2.02	0.41
1:D:123:LEU:O	1:D:127:ASN:HB2	2.19	0.41
1:B:26:THR:HG22	1:B:26:THR:O	2.21	0.41
1:A:26:THR:O	1:A:26:THR:HG22	2.21	0.41
1:D:32:ILE:HD13	1:D:44:LEU:HD23	2.03	0.41
1:B:67:ASN:HB2	7:B:461:HOH:O	2.20	0.41
1:A:193:ALA:N	1:A:194:PRO:HD2	2.36	0.40
1:D:222:ARG:HD3	1:D:231:GLU:OE2	2.21	0.40

There are no symmetry-related clashes.

5.3 Torsion angles [i](#)

5.3.1 Protein backbone [i](#)

In the following table, the Percentiles column shows the percent Ramachandran outliers of the chain as a percentile score with respect to all X-ray entries followed by that with respect to entries of similar resolution.

The Analysed column shows the number of residues for which the backbone conformation was analysed, and the total number of residues.

Mol	Chain	Analysed	Favoured	Allowed	Outliers	Percentiles	
1	A	242/288 (84%)	234 (97%)	8 (3%)	0	100	100
1	B	239/288 (83%)	233 (98%)	6 (2%)	0	100	100
1	D	243/288 (84%)	234 (96%)	9 (4%)	0	100	100
2	C	225/288 (78%)	218 (97%)	7 (3%)	0	100	100
All	All	949/1152 (82%)	919 (97%)	30 (3%)	0	100	100

There are no Ramachandran outliers to report.

5.3.2 Protein sidechains [i](#)

In the following table, the Percentiles column shows the percent sidechain outliers of the chain as a percentile score with respect to all X-ray entries followed by that with respect to entries of similar resolution.

The Analysed column shows the number of residues for which the sidechain conformation was analysed, and the total number of residues.

Mol	Chain	Analysed	Rotameric	Outliers	Percentiles	
1	A	193/230 (84%)	192 (100%)	1 (0%)	88	86
1	B	192/230 (84%)	192 (100%)	0	100	100
1	D	191/230 (83%)	190 (100%)	1 (0%)	88	86
2	C	184/229 (80%)	182 (99%)	2 (1%)	73	65
All	All	760/919 (83%)	756 (100%)	4 (0%)	88	86

All (4) residues with a non-rotameric sidechain are listed below:

Mol	Chain	Res	Type
1	A	179	HIS
2	C	53	SER
2	C	166	GLN
1	D	169	MET

Sometimes sidechains can be flipped to improve hydrogen bonding and reduce clashes. There are no such sidechains identified.

5.3.3 RNA [i](#)

There are no RNA molecules in this entry.

5.4 Non-standard residues in protein, DNA, RNA chains [i](#)

6 non-standard protein/DNA/RNA residues are modelled in this entry.

In the following table, the Counts columns list the number of bonds (or angles) for which Mogul statistics could be retrieved, the number of bonds (or angles) that are observed in the model and the number of bonds (or angles) that are defined in the Chemical Component Dictionary. The Link column lists molecule types, if any, to which the group is linked. The Z score for a bond length (or angle) is the number of standard deviations the observed value is removed from the

expected value. A bond length (or angle) with $|Z| > 2$ is considered an outlier worth inspection. RMSZ is the root-mean-square of all Z scores of the bond lengths (or angles).

Mol	Type	Chain	Res	Link	Bond lengths			Bond angles		
					Counts	RMSZ	# $ Z > 2$	Counts	RMSZ	# $ Z > 2$
2	OCS	C	59	2	7,8,9	2.23	2 (28%)	6,11,13	1.81	1 (16%)
2	CSX	C	168	2	3,6,7	0.48	0	1,6,8	1.17	0
1	CSX	A	168	1	3,6,7	0.53	0	1,6,8	1.27	0
1	CSX	D	168	1	3,6,7	0.57	0	1,6,8	1.06	0
1	CSX	B	168[A]	1	3,6,7	0.83	0	1,6,8	0.10	0
1	CSX	B	168[B]	1	3,6,7	1.34	0	1,6,8	3.55	1 (100%)

In the following table, the Chirals column lists the number of chiral outliers, the number of chiral centers analysed, the number of these observed in the model and the number defined in the Chemical Component Dictionary. Similar counts are reported in the Torsion and Rings columns. '-' means no outliers of that kind were identified.

Mol	Type	Chain	Res	Link	Chirals	Torsions	Rings
2	OCS	C	59	2	-	1/4/7/9	-
2	CSX	C	168	2	-	0/1/5/7	-
1	CSX	A	168	1	-	0/1/5/7	-
1	CSX	D	168	1	-	0/1/5/7	-
1	CSX	B	168[A]	1	-	0/1/5/7	-
1	CSX	B	168[B]	1	-	1/1/5/7	-

All (2) bond length outliers are listed below:

Mol	Chain	Res	Type	Atoms	Z	Observed(Å)	Ideal(Å)
2	C	59	OCS	OD3-SG	4.80	1.59	1.45
2	C	59	OCS	CB-CA	-2.36	1.51	1.53

All (2) bond angle outliers are listed below:

Mol	Chain	Res	Type	Atoms	Z	Observed(°)	Ideal(°)
2	C	59	OCS	OD3-SG-CB	3.73	111.38	106.94
1	B	168[B]	CSX	CA-CB-SG	3.55	121.10	113.36

There are no chirality outliers.

All (2) torsion outliers are listed below:

Mol	Chain	Res	Type	Atoms
1	B	168[B]	CSX	N-CA-CB-SG
2	C	59	OCS	N-CA-CB-SG

There are no ring outliers.

2 monomers are involved in 3 short contacts:

Mol	Chain	Res	Type	Clashes	Symm-Clashes
1	A	168	CSX	1	0
1	B	168[A]	CSX	2	0

5.5 Carbohydrates [i](#)

There are no monosaccharides in this entry.

5.6 Ligand geometry [i](#)

11 ligands are modelled in this entry.

In the following table, the Counts columns list the number of bonds (or angles) for which Mogul statistics could be retrieved, the number of bonds (or angles) that are observed in the model and the number of bonds (or angles) that are defined in the Chemical Component Dictionary. The Link column lists molecule types, if any, to which the group is linked. The Z score for a bond length (or angle) is the number of standard deviations the observed value is removed from the expected value. A bond length (or angle) with $|Z| > 2$ is considered an outlier worth inspection. RMSZ is the root-mean-square of all Z scores of the bond lengths (or angles).

Mol	Type	Chain	Res	Link	Bond lengths			Bond angles		
					Counts	RMSZ	# Z > 2	Counts	RMSZ	# Z > 2
4	6JP	A	302	-	24,24,24	1.89	4 (16%)	35,35,35	1.63	6 (17%)
3	NAP	C	301	-	45,52,52	1.03	2 (4%)	56,80,80	1.50	7 (12%)
3	NAP	D	301	-	45,52,52	1.16	4 (8%)	56,80,80	1.52	8 (14%)
3	NAP	A	301	-	45,52,52	1.12	5 (11%)	56,80,80	1.22	5 (8%)
3	NAP	B	301	-	45,52,52	1.12	5 (11%)	56,80,80	1.50	9 (16%)
5	ACT	A	303	-	3,3,3	1.20	0	3,3,3	1.11	0
6	GOL	C	304	-	5,5,5	0.77	0	5,5,5	0.75	0
4	6JP	B	302	-	24,24,24	1.91	6 (25%)	35,35,35	2.18	9 (25%)
5	ACT	C	303	-	3,3,3	0.83	0	3,3,3	0.25	0
4	6JP	D	302	-	24,24,24	2.02	5 (20%)	35,35,35	1.51	6 (17%)
4	6JP	C	302	-	24,24,24	1.73	3 (12%)	35,35,35	1.72	7 (20%)

In the following table, the Chirals column lists the number of chiral outliers, the number of chiral centers analysed, the number of these observed in the model and the number defined in the Chemical Component Dictionary. Similar counts are reported in the Torsion and Rings columns. '-' means no outliers of that kind were identified.

Mol	Type	Chain	Res	Link	Chirals	Torsions	Rings
4	6JP	A	302	-	-	2/6/18/18	0/3/3/3
3	NAP	C	301	-	-	1/31/67/67	0/5/5/5
3	NAP	D	301	-	-	0/31/67/67	0/5/5/5
3	NAP	A	301	-	-	0/31/67/67	0/5/5/5
3	NAP	B	301	-	-	0/31/67/67	0/5/5/5
6	GOL	C	304	-	-	0/4/4/4	-
4	6JP	B	302	-	-	3/6/18/18	0/3/3/3
4	6JP	D	302	-	-	2/6/18/18	0/3/3/3
4	6JP	C	302	-	-	2/6/18/18	0/3/3/3

All (34) bond length outliers are listed below:

Mol	Chain	Res	Type	Atoms	Z	Observed(Å)	Ideal(Å)
4	D	302	6JP	CAI-CAH	-5.49	1.41	1.50
4	A	302	6JP	CAK-CAJ	-5.44	1.42	1.51
4	B	302	6JP	CAI-CAH	-5.31	1.41	1.50
4	A	302	6JP	CAI-CAH	-4.79	1.42	1.50
4	B	302	6JP	CAK-CAJ	-4.59	1.43	1.51
4	D	302	6JP	CAK-CAJ	-4.59	1.43	1.51
4	C	302	6JP	CAI-CAH	-4.57	1.43	1.50
4	C	302	6JP	CAK-CAJ	-4.54	1.43	1.51
3	D	301	NAP	P2B-O2B	3.71	1.66	1.59
3	A	301	NAP	P2B-O2B	3.68	1.66	1.59
3	D	301	NAP	O4D-C1D	3.45	1.45	1.41
3	B	301	NAP	P2B-O2B	3.36	1.65	1.59
3	D	301	NAP	C7N-N7N	2.95	1.38	1.33
3	C	301	NAP	C5A-C4A	2.86	1.48	1.40
3	C	301	NAP	P2B-O2B	2.74	1.64	1.59
4	D	302	6JP	CAM-CAK	2.73	1.43	1.39
4	C	302	6JP	CAN-CAK	2.72	1.43	1.39
4	B	302	6JP	OAG-CAF	-2.61	1.34	1.38
3	B	301	NAP	C2N-N1N	2.48	1.38	1.35
3	B	301	NAP	C2A-N3A	2.37	1.35	1.32
3	B	301	NAP	C5A-C4A	2.31	1.47	1.40
3	A	301	NAP	C2N-N1N	2.28	1.37	1.35
4	D	302	6JP	CAC-CAD	2.28	1.42	1.38
4	B	302	6JP	CAE-CAH	-2.24	1.41	1.46
3	A	301	NAP	C5A-C4A	2.23	1.46	1.40
3	A	301	NAP	PA-O2A	-2.21	1.44	1.55
4	D	302	6JP	CAE-CAH	-2.14	1.41	1.46
3	A	301	NAP	O7N-C7N	2.10	1.28	1.24
3	B	301	NAP	C6A-C5A	2.05	1.50	1.43

Continued on next page...

Continued from previous page...

Mol	Chain	Res	Type	Atoms	Z	Observed(Å)	Ideal(Å)
4	A	302	6JP	CAM-CAK	2.05	1.42	1.39
4	A	302	6JP	OAR-CAP	2.04	1.40	1.37
3	D	301	NAP	O2D-C2D	2.04	1.47	1.43
4	B	302	6JP	CAM-CAK	2.04	1.42	1.39
4	B	302	6JP	CAL-CAP	2.03	1.44	1.40

All (57) bond angle outliers are listed below:

Mol	Chain	Res	Type	Atoms	Z	Observed(°)	Ideal(°)
4	B	302	6JP	OAR-CAP-CAL	6.36	123.78	114.57
3	D	301	NAP	C1B-N9A-C4A	-5.81	116.44	126.64
4	C	302	6JP	CAS-OAR-CAP	5.51	125.84	117.53
3	B	301	NAP	C3N-C7N-N7N	5.12	123.89	117.75
3	C	301	NAP	C3N-C7N-N7N	4.79	123.50	117.75
3	A	301	NAP	C1B-N9A-C4A	-4.63	118.50	126.64
3	D	301	NAP	N3A-C2A-N1A	-4.57	121.53	128.68
4	B	302	6JP	CAS-OAR-CAP	4.54	124.38	117.53
4	B	302	6JP	OAR-CAP-CAO	-4.37	116.89	124.37
4	D	302	6JP	CAS-OAR-CAP	4.23	123.91	117.53
4	C	302	6JP	OAR-CAP-CAL	4.09	120.49	114.57
3	C	301	NAP	N3A-C2A-N1A	-4.06	122.33	128.68
4	A	302	6JP	OAG-CAF-CAE	-4.04	117.39	121.56
4	B	302	6JP	OAG-CAF-CAE	-3.81	117.63	121.56
4	A	302	6JP	CAS-OAR-CAP	3.67	123.08	117.53
3	B	301	NAP	N3A-C2A-N1A	-3.59	123.06	128.68
3	C	301	NAP	C2A-N1A-C6A	3.59	124.89	118.75
3	A	301	NAP	N3A-C2A-N1A	-3.44	123.31	128.68
4	D	302	6JP	OAG-CAF-CAE	-3.43	118.03	121.56
4	A	302	6JP	CAF-OAG-CAJ	3.40	121.22	115.50
4	B	302	6JP	OAU-CAD-CAE	-3.36	114.86	121.14
3	B	301	NAP	C1B-N9A-C4A	-3.30	120.84	126.64
3	B	301	NAP	O7N-C7N-C3N	-3.21	115.80	119.63
3	C	301	NAP	C1B-N9A-C4A	-3.20	121.02	126.64
4	D	302	6JP	CAD-CAC-CAB	3.03	122.44	119.70
3	D	301	NAP	C2A-N1A-C6A	2.95	123.80	118.75
3	B	301	NAP	C4A-C5A-N7A	-2.92	106.36	109.40
3	B	301	NAP	O2A-PA-O1A	2.86	126.39	112.24
4	B	302	6JP	CAF-CAE-CAH	2.82	122.89	120.33
3	B	301	NAP	O2B-P2B-O1X	-2.77	98.70	109.39
3	D	301	NAP	PN-O3-PA	-2.73	123.46	132.83
4	D	302	6JP	CAI-CAH-CAE	2.64	121.75	117.12
3	A	301	NAP	O7N-C7N-C3N	-2.59	116.53	119.63

Continued on next page...

Continued from previous page...

Mol	Chain	Res	Type	Atoms	Z	Observed(°)	Ideal(°)
4	C	302	6JP	OAR-CAP-CAO	-2.55	120.00	124.37
3	B	301	NAP	O3X-P2B-O2X	2.55	117.37	107.64
4	C	302	6JP	CAJ-CAI-CAH	-2.54	105.47	112.64
4	B	302	6JP	CAF-OAG-CAJ	2.53	119.75	115.50
4	A	302	6JP	CAJ-CAI-CAH	-2.51	105.55	112.64
4	B	302	6JP	CAJ-CAI-CAH	-2.48	105.64	112.64
3	C	301	NAP	C4A-C5A-N7A	-2.44	106.86	109.40
4	A	302	6JP	CAI-CAH-CAE	2.42	121.35	117.12
3	D	301	NAP	C4A-C5A-N7A	-2.40	106.89	109.40
4	C	302	6JP	OAG-CAF-CAE	-2.39	119.10	121.56
4	D	302	6JP	CAF-OAG-CAJ	2.38	119.50	115.50
3	D	301	NAP	O4B-C1B-C2B	2.38	110.71	106.59
4	C	302	6JP	CAD-CAC-CAB	2.35	121.82	119.70
4	A	302	6JP	OAU-CAD-CAE	-2.24	116.94	121.14
3	C	301	NAP	O7N-C7N-N7N	-2.24	119.39	122.58
4	B	302	6JP	CAD-CAC-CAB	2.18	121.67	119.70
3	C	301	NAP	O7N-C7N-C3N	-2.17	117.04	119.63
3	A	301	NAP	O4D-C1D-C2D	-2.16	103.76	106.93
3	A	301	NAP	O3X-P2B-O2X	2.15	115.86	107.64
3	D	301	NAP	O2X-P2B-O1X	2.14	119.06	110.68
3	D	301	NAP	O7N-C7N-C3N	-2.13	117.08	119.63
3	B	301	NAP	O5B-PA-O1A	2.13	117.37	109.07
4	D	302	6JP	OAT-CAH-CAE	-2.12	119.02	122.38
4	C	302	6JP	CAD-CAE-CAH	2.01	123.64	120.81

There are no chirality outliers.

All (10) torsion outliers are listed below:

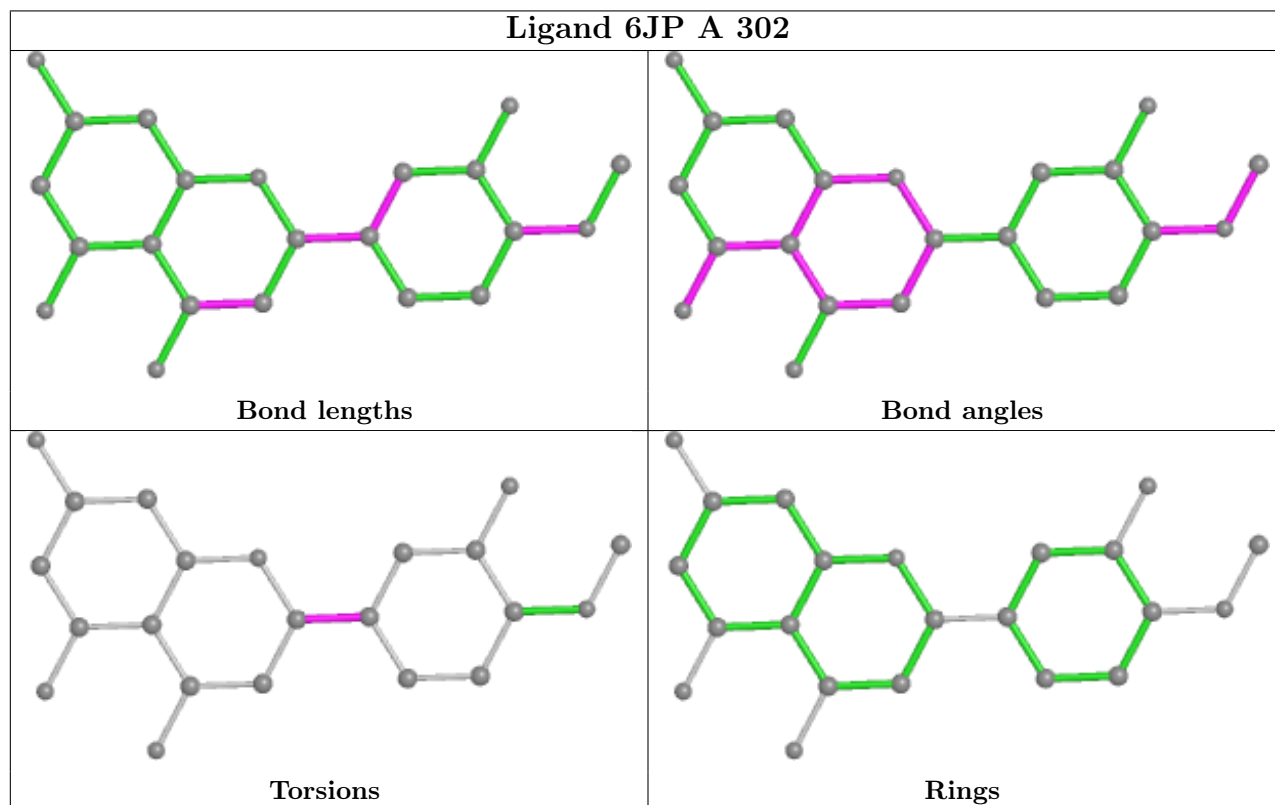
Mol	Chain	Res	Type	Atoms
3	C	301	NAP	C2B-O2B-P2B-O2X
4	B	302	6JP	CAO-CAP-OAR-CAS
4	B	302	6JP	CAL-CAP-OAR-CAS
4	C	302	6JP	CAI-CAJ-CAK-CAN
4	C	302	6JP	CAI-CAJ-CAK-CAM
4	A	302	6JP	CAI-CAJ-CAK-CAM
4	A	302	6JP	CAI-CAJ-CAK-CAN
4	D	302	6JP	CAI-CAJ-CAK-CAM
4	B	302	6JP	CAI-CAJ-CAK-CAM
4	D	302	6JP	CAI-CAJ-CAK-CAN

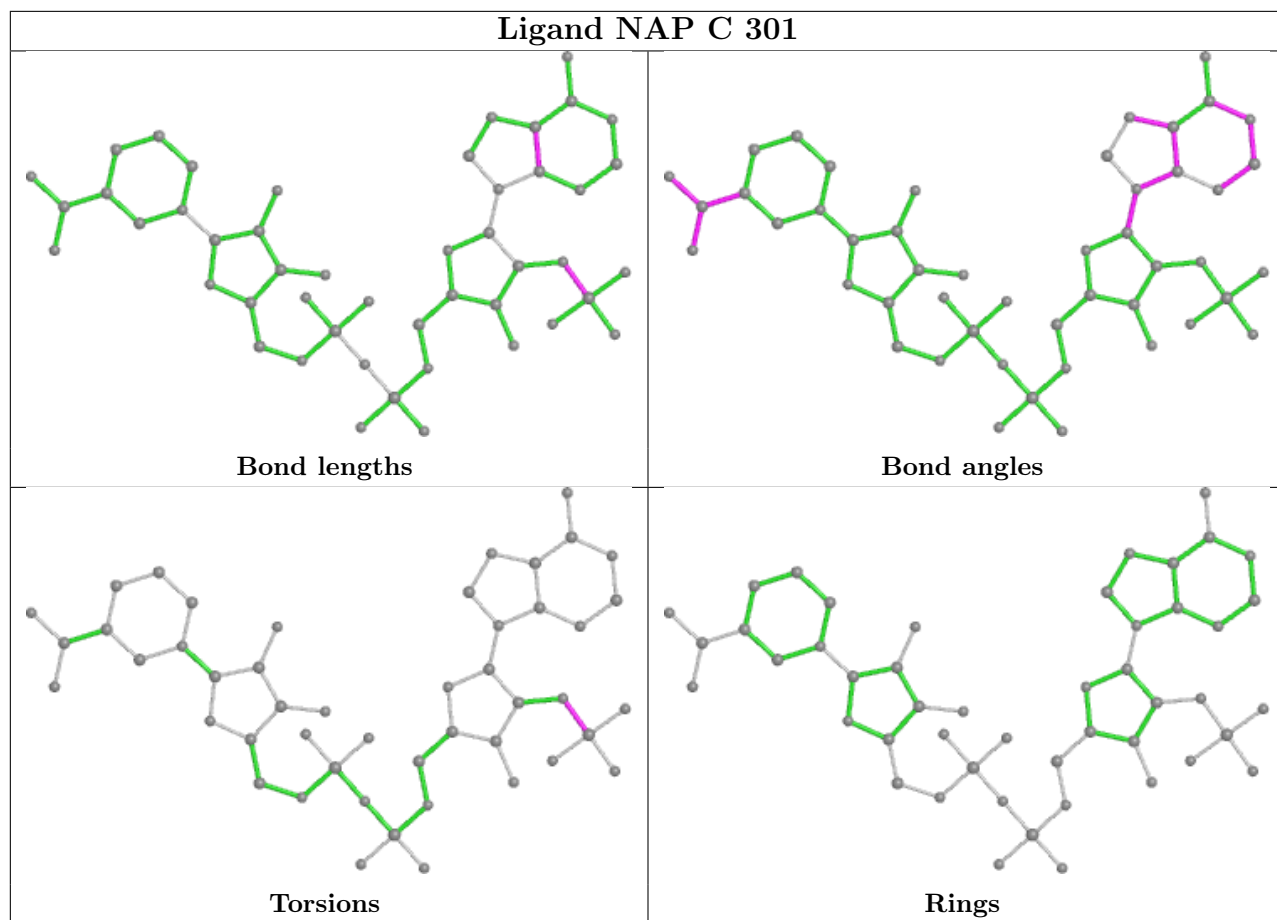
There are no ring outliers.

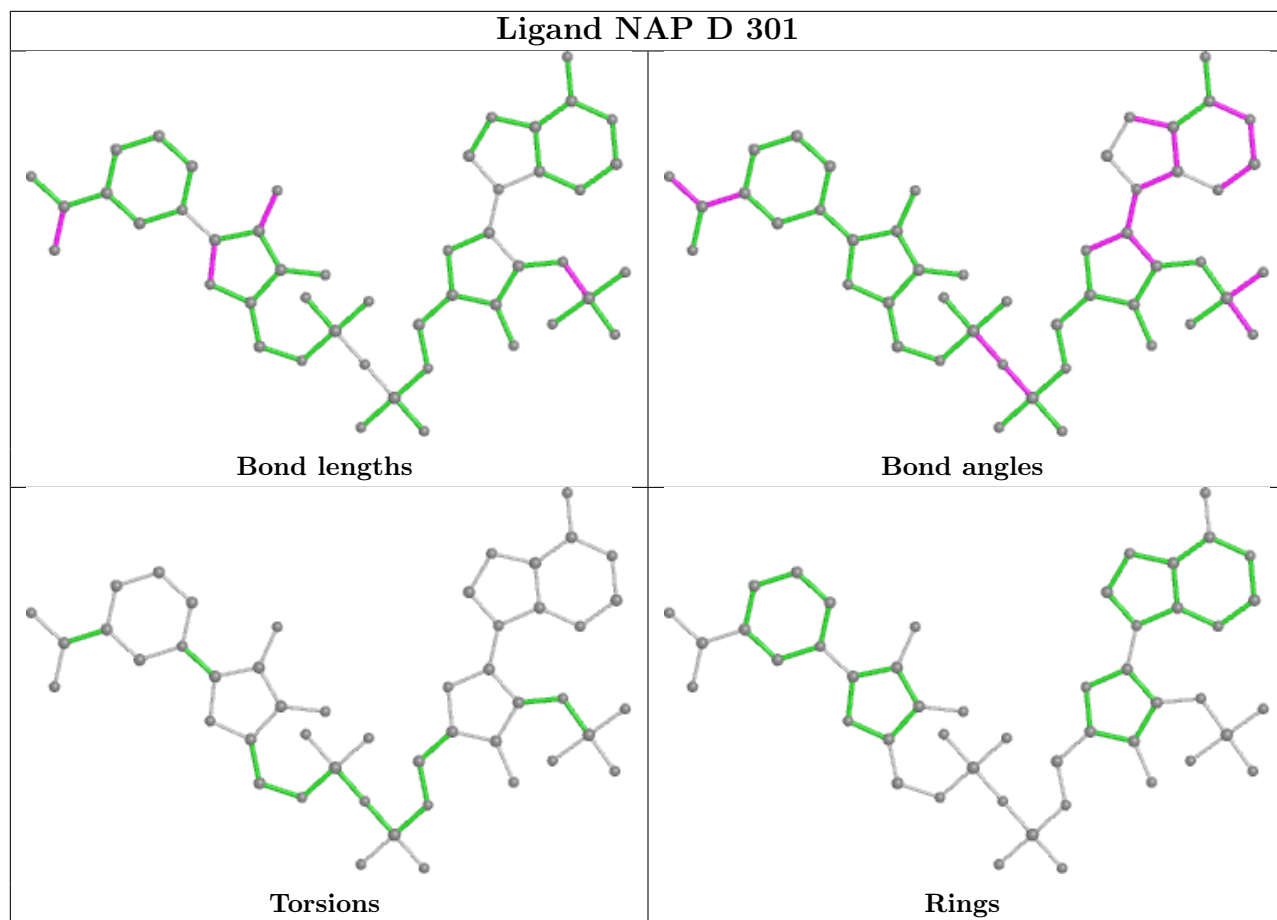
4 monomers are involved in 6 short contacts:

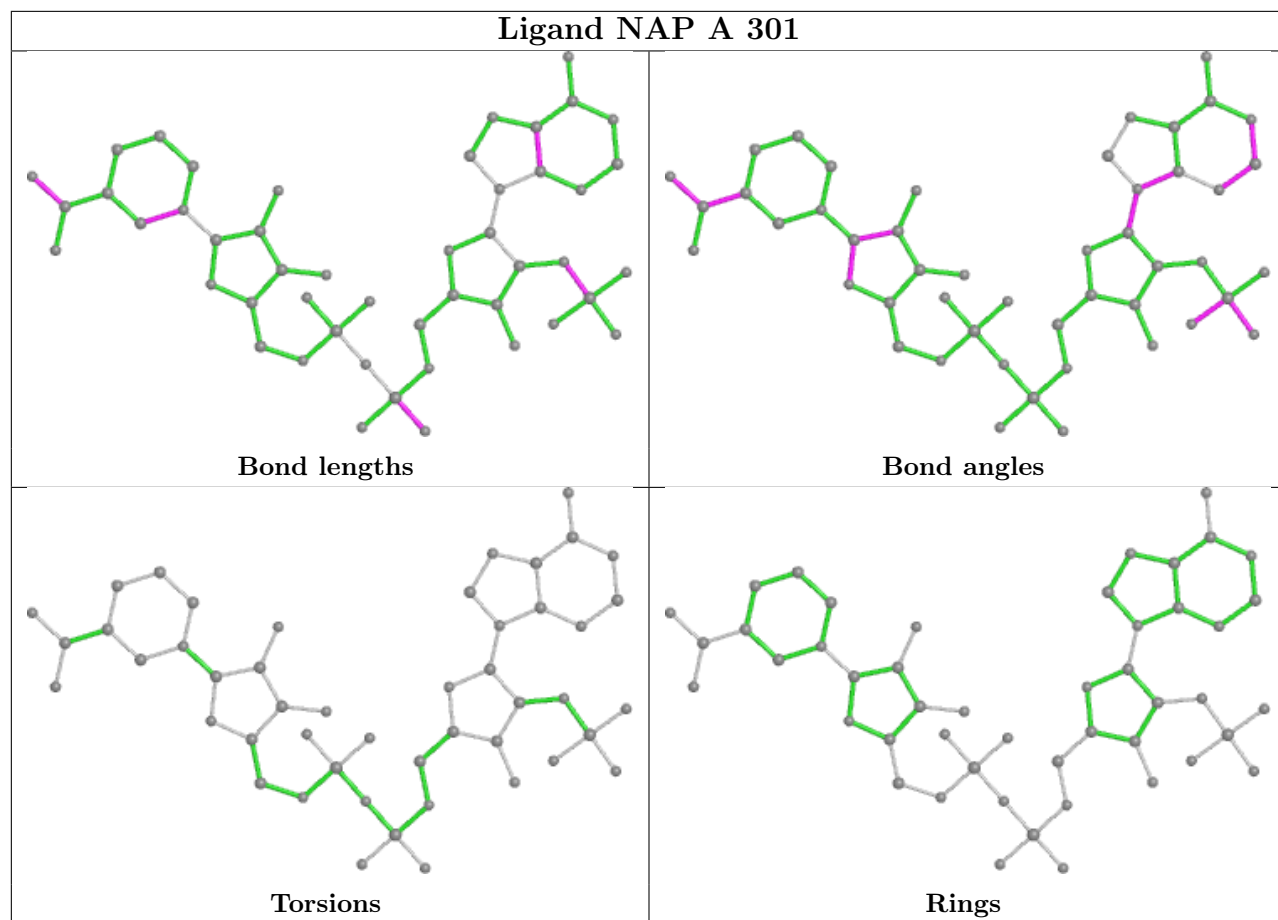
Mol	Chain	Res	Type	Clashes	Symm-Clashes
4	A	302	6JP	1	0
3	D	301	NAP	1	0
5	A	303	ACT	1	0
4	B	302	6JP	3	0

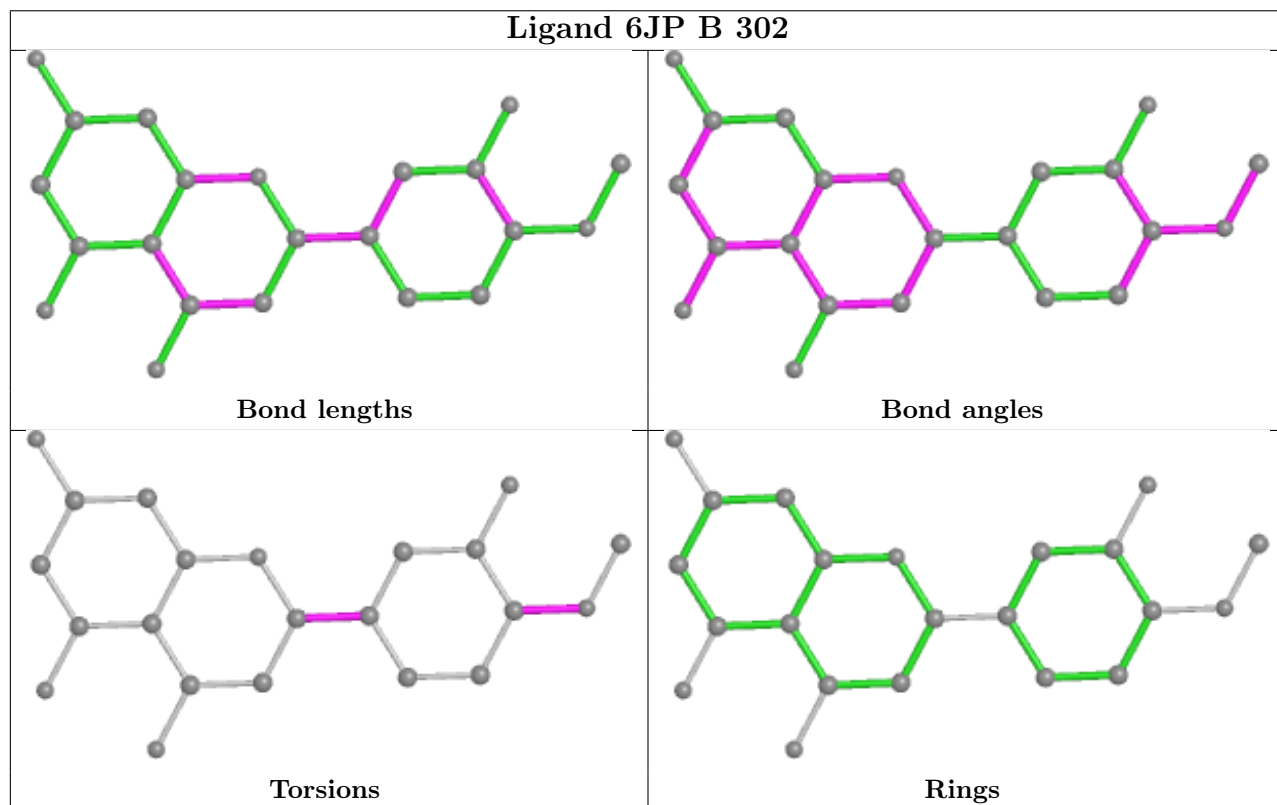
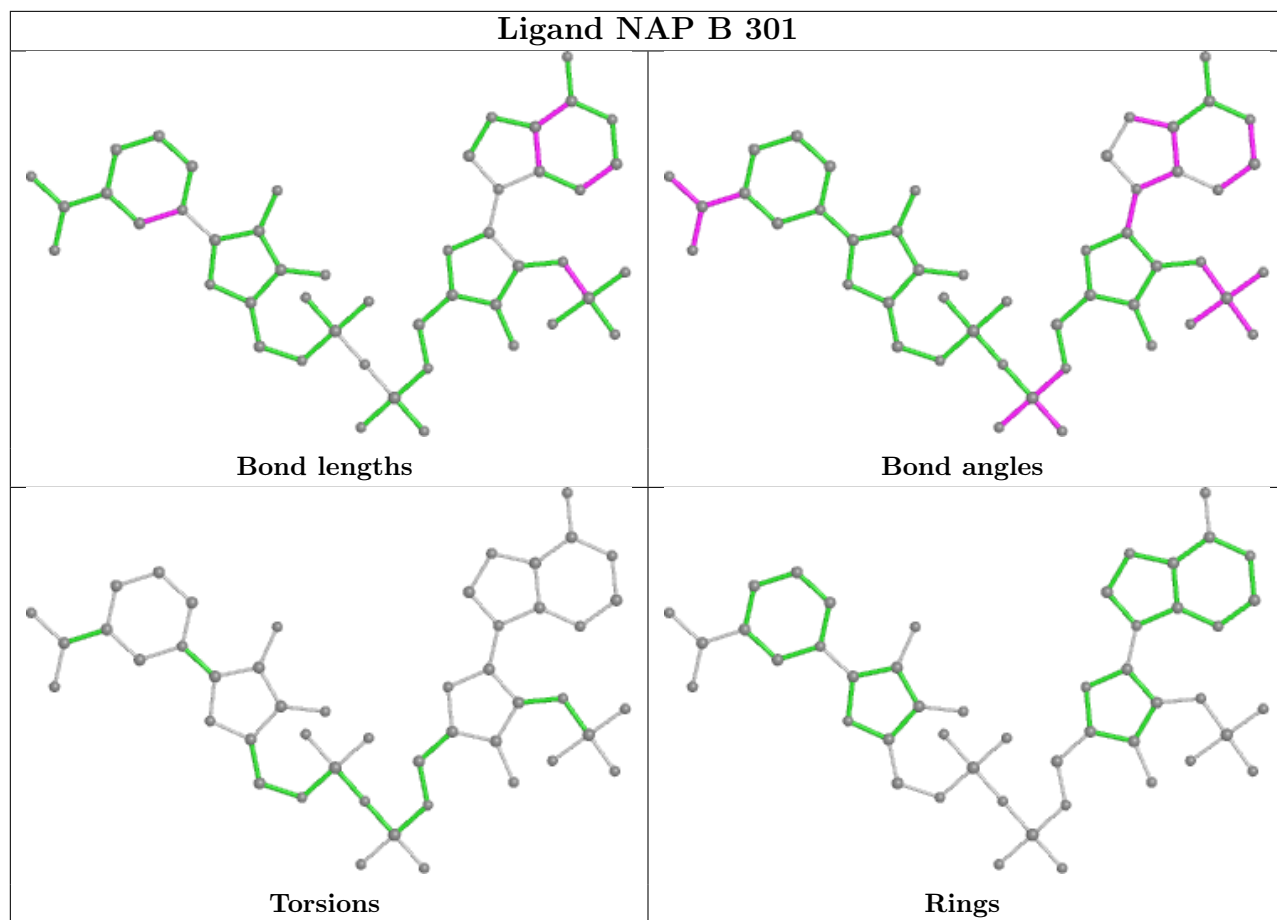
The following is a two-dimensional graphical depiction of Mogul quality analysis of bond lengths, bond angles, torsion angles, and ring geometry for all instances of the Ligand of Interest. In addition, ligands with molecular weight > 250 and outliers as shown on the validation Tables will also be included. For torsion angles, if less than 5% of the Mogul distribution of torsion angles is within 10 degrees of the torsion angle in question, then that torsion angle is considered an outlier. Any bond that is central to one or more torsion angles identified as an outlier by Mogul will be highlighted in the graph. For rings, the root-mean-square deviation (RMSD) between the ring in question and similar rings identified by Mogul is calculated over all ring torsion angles. If the average RMSD is greater than 60 degrees and the minimal RMSD between the ring in question and any Mogul-identified rings is also greater than 60 degrees, then that ring is considered an outlier. The outliers are highlighted in purple. The color gray indicates Mogul did not find sufficient equivalents in the CSD to analyse the geometry.

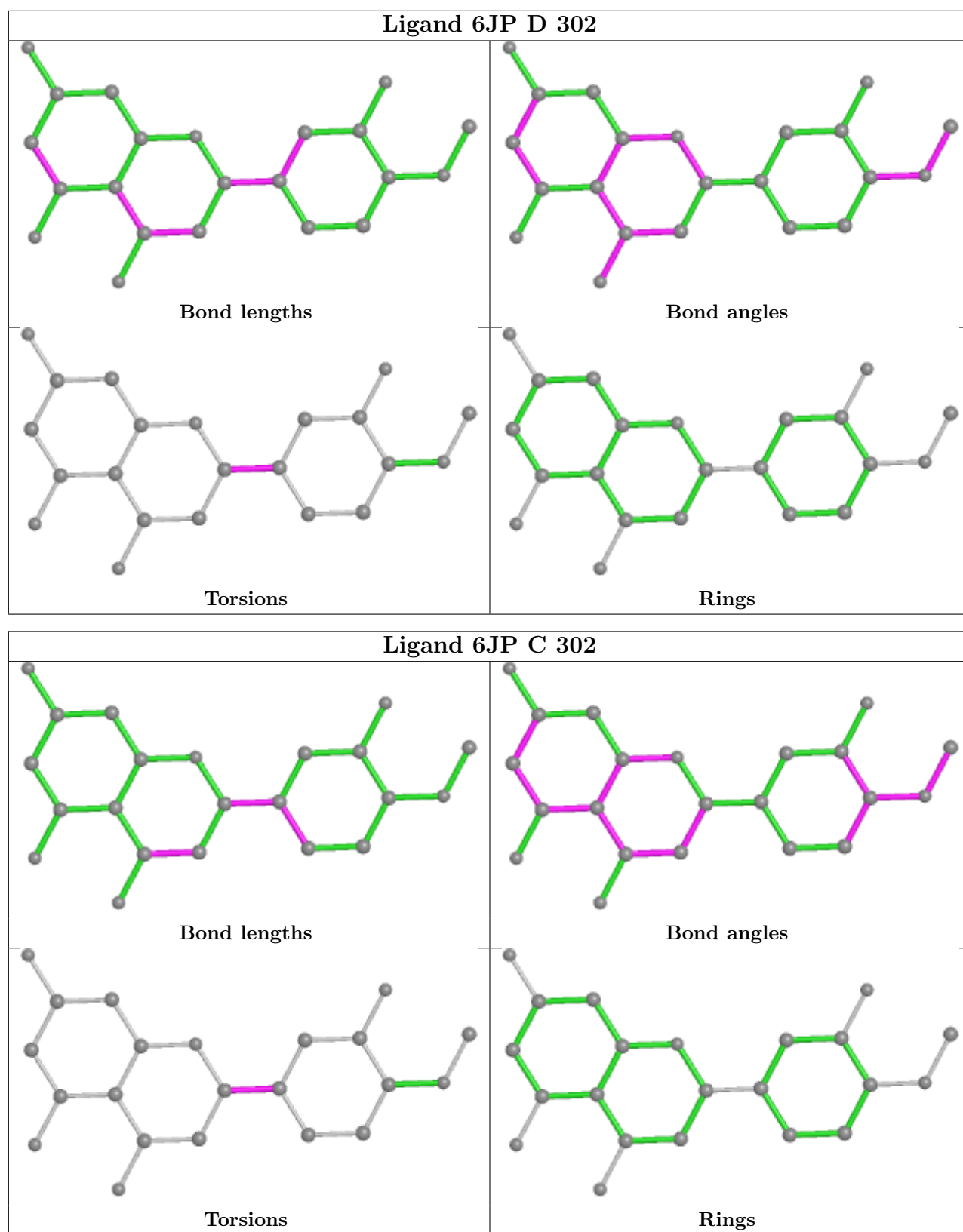












5.7 Other polymers [i](#)

There are no such residues in this entry.

5.8 Polymer linkage issues

The following chains have linkage breaks:

Mol	Chain	Number of breaks
1	B	1

All chain breaks are listed below:

Model	Chain	Residue-1	Atom-1	Residue-2	Atom-2	Distance (Å)
1	B	259:VAL	C	260:ASP	N	1.64

6 Fit of model and data [i](#)

6.1 Protein, DNA and RNA chains [i](#)

In the following table, the column labelled ‘#RSRZ > 2’ contains the number (and percentage) of RSRZ outliers, followed by percent RSRZ outliers for the chain as percentile scores relative to all X-ray entries and entries of similar resolution. The OWAB column contains the minimum, median, 95th percentile and maximum values of the occupancy-weighted average B-factor per residue. The column labelled ‘Q < 0.9’ lists the number of (and percentage) of residues with an average occupancy less than 0.9.

Mol	Chain	Analysed	<RSRZ>	#RSRZ>2	OWAB(Å ²)	Q<0.9
1	A	248/288 (86%)	0.58	9 (3%) 42 41	10, 19, 38, 51	0
1	B	245/288 (85%)	0.30	2 (0%) 86 86	9, 16, 33, 43	0
1	D	247/288 (85%)	0.57	11 (4%) 33 31	10, 20, 40, 55	0
2	C	237/288 (82%)	0.62	16 (6%) 17 17	10, 19, 42, 63	0
All	All	977/1152 (84%)	0.52	38 (3%) 39 38	9, 19, 38, 63	0

All (38) RSRZ outliers are listed below:

Mol	Chain	Res	Type	RSRZ
2	C	206	VAL	5.1
2	C	220	LYS	4.9
1	B	212	ALA	4.6
2	C	221	TRP	4.5
1	A	212	ALA	4.2
1	D	211	VAL	4.1
2	C	216	GLU	3.9
2	C	209	LEU	3.7
1	D	212	ALA	3.5
1	D	152	SER	3.4
2	C	228	GLY	3.0
1	A	211	VAL	2.8
1	B	208	LEU	2.8
2	C	217	GLU	2.7
2	C	195	TYR	2.7
1	A	56	ALA	2.6
2	C	67	ASN	2.6
2	C	218	LYS	2.6
1	A	50	LYS	2.5
2	C	46	ASP	2.5
2	C	54	ASN	2.4

Continued on next page...

Continued from previous page...

Mol	Chain	Res	Type	RSRZ
2	C	42	VAL	2.4
1	A	152	SER	2.4
1	A	195	TYR	2.4
1	D	251	TYR	2.2
1	A	46	ASP	2.2
1	D	53[A]	SER	2.2
1	D	214	GLY	2.1
2	C	229	ARG	2.1
1	A	103	VAL	2.1
2	C	207	SER	2.1
1	D	210	PRO	2.1
1	D	230	ARG	2.1
2	C	37	SER	2.1
1	D	116	VAL	2.1
1	D	48	LEU	2.1
1	A	51	GLU	2.0
1	D	42	VAL	2.0

6.2 Non-standard residues in protein, DNA, RNA chains [i](#)

In the following table, the Atoms column lists the number of modelled atoms in the group and the number defined in the chemical component dictionary. The B-factors column lists the minimum, median, 95th percentile and maximum values of B factors of atoms in the group. The column labelled 'Q< 0.9' lists the number of atoms with occupancy less than 0.9.

Mol	Type	Chain	Res	Atoms	RSCC	RSR	B-factors(Å ²)	Q<0.9
1	CSX	D	168	7/8	0.85	0.11	23,28,50,54	0
1	CSX	A	168	7/8	0.86	0.12	23,28,54,55	0
1	CSX	B	168[B]	7/8	0.87	0.14	20,23,27,30	7
1	CSX	B	168[A]	7/8	0.87	0.14	18,21,22,25	7
2	CSX	C	168	7/8	0.89	0.12	22,26,41,50	0
2	OCS	C	59	9/10	0.95	0.08	16,19,24,24	0

6.3 Carbohydrates [i](#)

There are no monosaccharides in this entry.

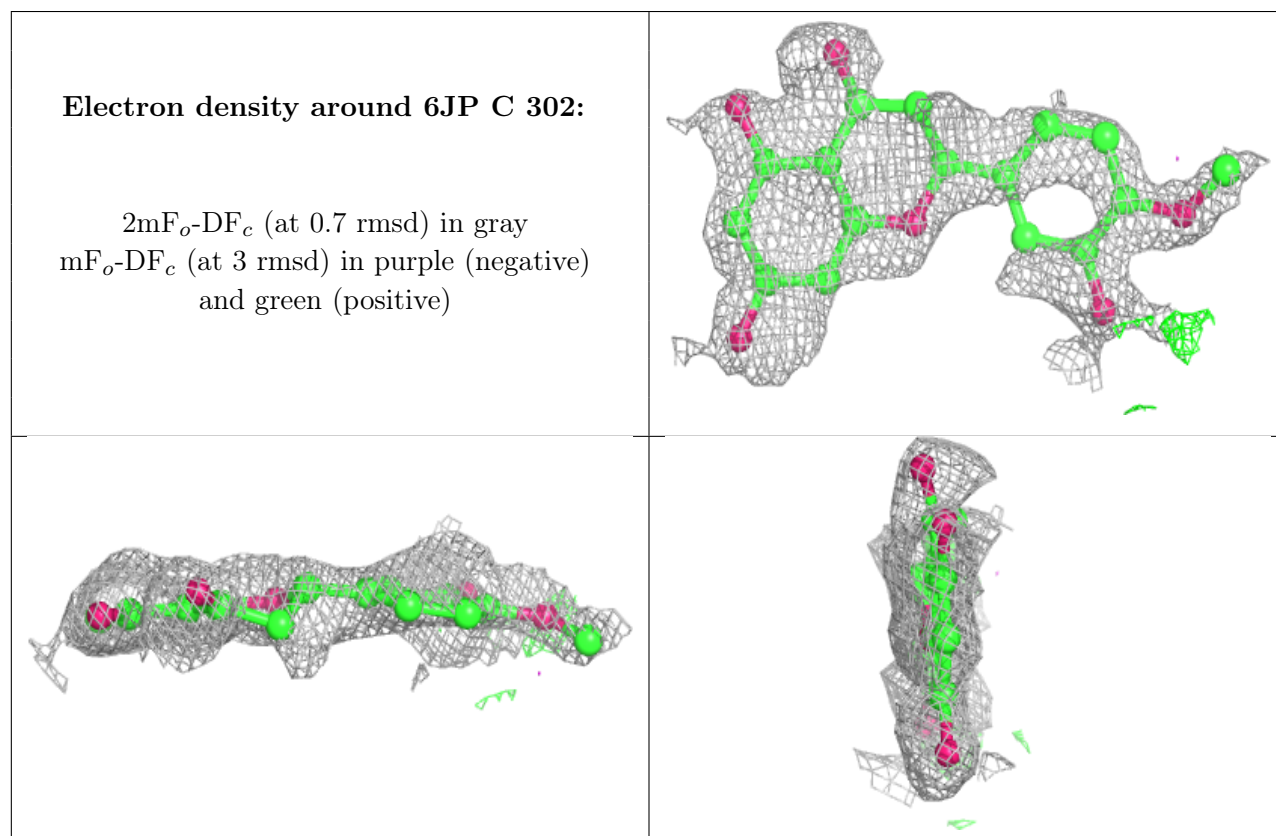
6.4 Ligands [i](#)

In the following table, the Atoms column lists the number of modelled atoms in the group and the number defined in the chemical component dictionary. The B-factors column lists the minimum,

median, 95th percentile and maximum values of B factors of atoms in the group. The column labelled 'Q< 0.9' lists the number of atoms with occupancy less than 0.9.

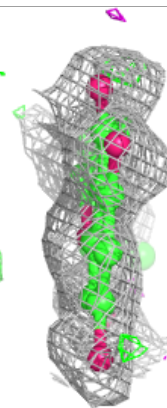
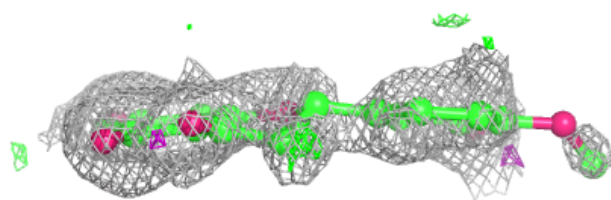
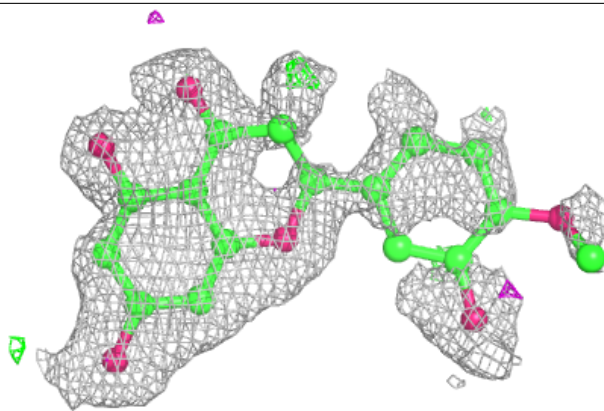
Mol	Type	Chain	Res	Atoms	RSCC	RSR	B-factors(Å ²)	Q<0.9
4	6JP	C	302	22/22	0.64	0.26	47,55,64,81	0
4	6JP	B	302	22/22	0.71	0.24	36,42,58,64	0
4	6JP	D	302	22/22	0.71	0.26	37,44,48,49	0
6	GOL	C	304	6/6	0.74	0.22	29,39,40,44	0
4	6JP	A	302	22/22	0.78	0.17	27,35,44,50	0
3	NAP	C	301	48/48	0.83	0.22	21,33,45,55	0
5	ACT	A	303	4/4	0.85	0.16	22,23,24,34	0
3	NAP	D	301	48/48	0.90	0.14	17,26,36,41	0
5	ACT	C	303	4/4	0.91	0.17	26,27,30,31	0
3	NAP	B	301	48/48	0.91	0.14	15,20,31,33	0
3	NAP	A	301	48/48	0.94	0.11	16,21,33,37	0

The following is a graphical depiction of the model fit to experimental electron density of all instances of the Ligand of Interest. In addition, ligands with molecular weight > 250 and outliers as shown on the geometry validation Tables will also be included. Each fit is shown from different orientation to approximate a three-dimensional view.

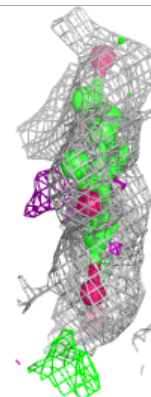
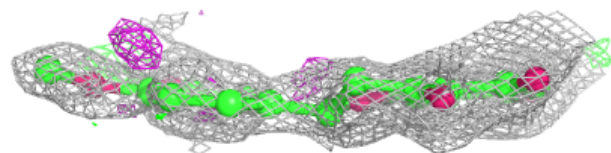
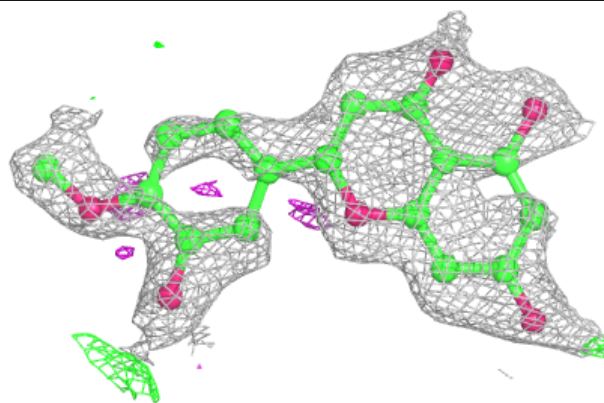


Electron density around 6JP B 302:

$2mF_o-DF_c$ (at 0.7 rmsd) in gray
 mF_o-DF_c (at 3 rmsd) in purple (negative)
and green (positive)

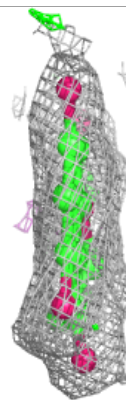
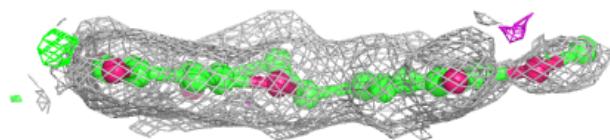
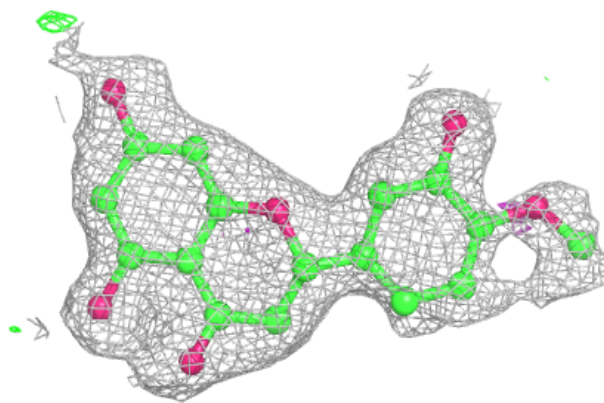
**Electron density around 6JP D 302:**

$2mF_o-DF_c$ (at 0.7 rmsd) in gray
 mF_o-DF_c (at 3 rmsd) in purple (negative)
and green (positive)

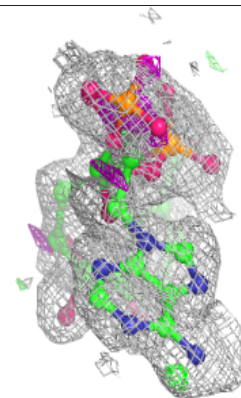
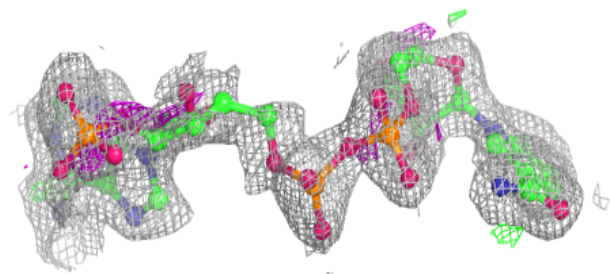
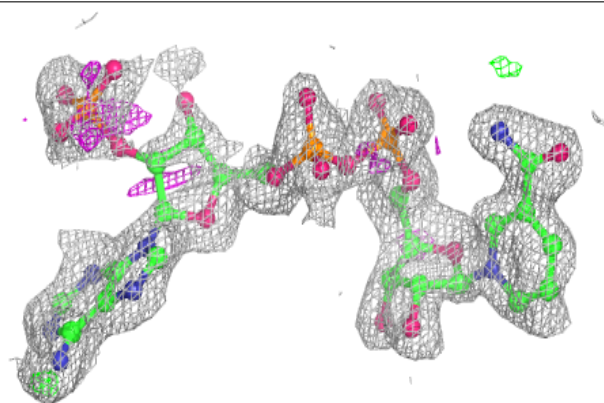


Electron density around 6JP A 302:

$2mF_o-DF_c$ (at 0.7 rmsd) in gray
 mF_o-DF_c (at 3 rmsd) in purple (negative)
and green (positive)

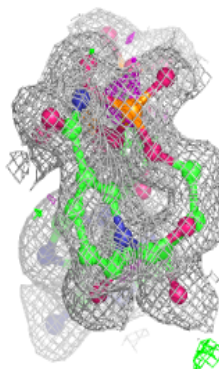
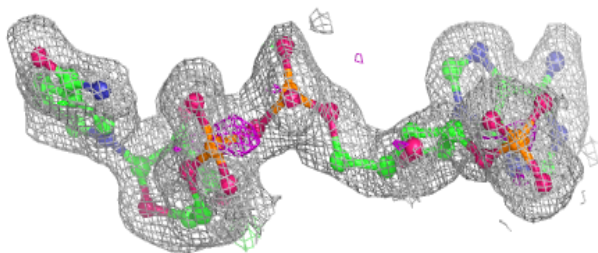
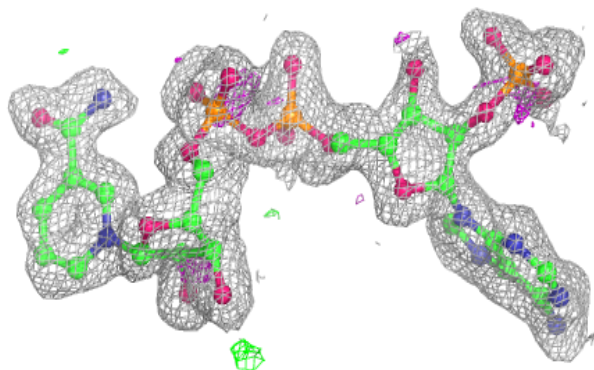
**Electron density around NAP C 301:**

$2mF_o-DF_c$ (at 0.7 rmsd) in gray
 mF_o-DF_c (at 3 rmsd) in purple (negative)
and green (positive)

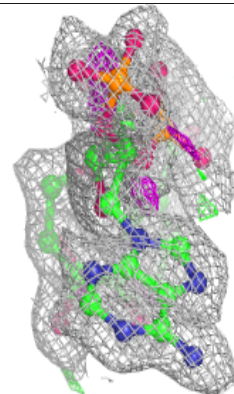
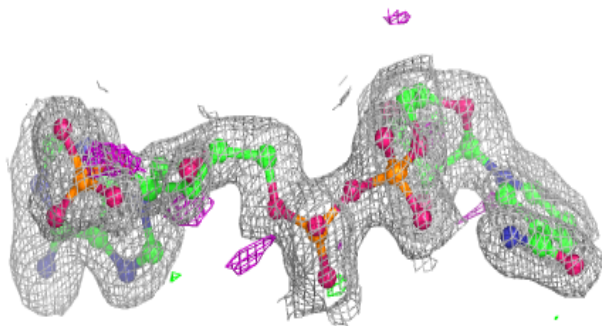
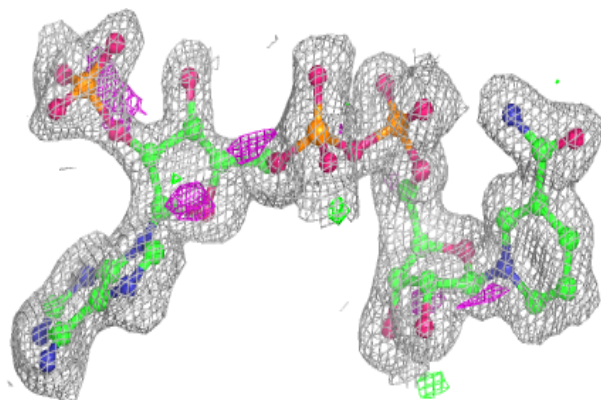


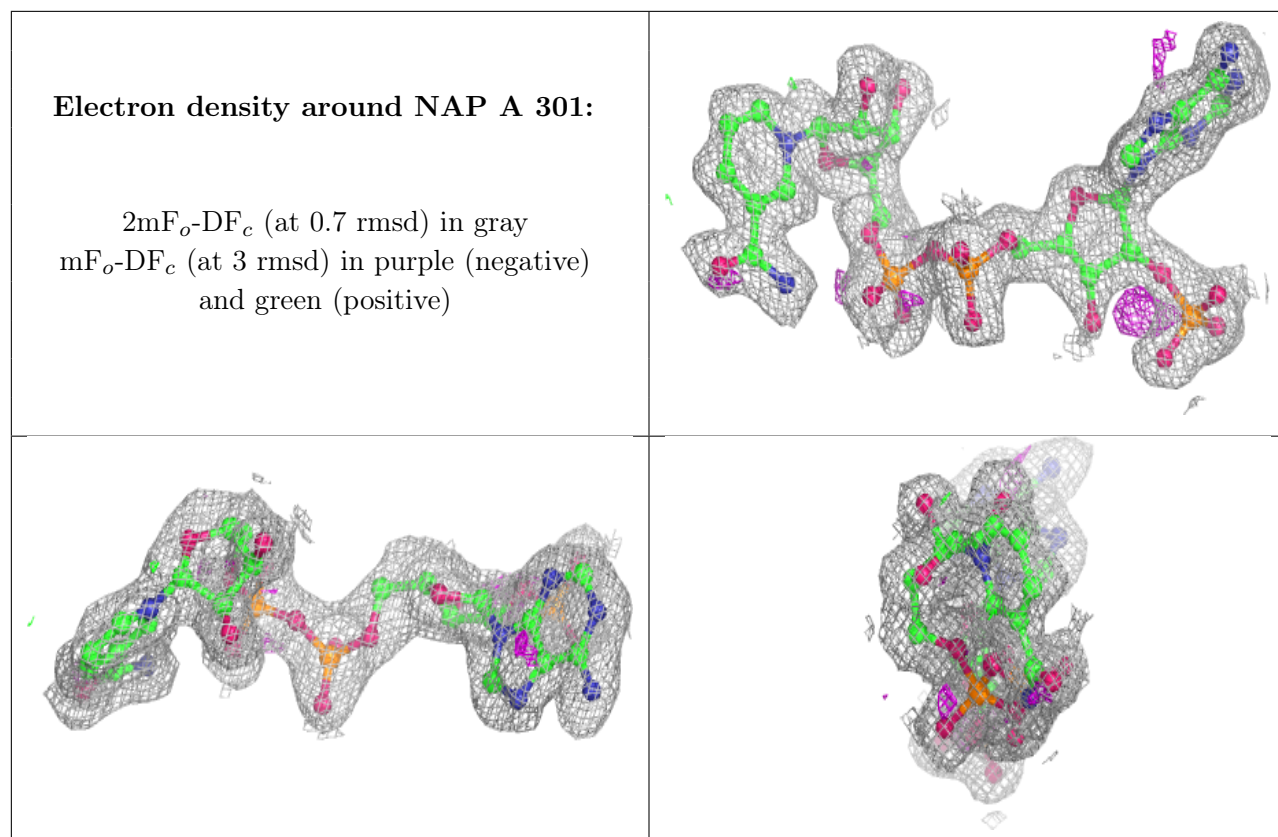
Electron density around NAP D 301:

$2mF_o-DF_c$ (at 0.7 rmsd) in gray
 mF_o-DF_c (at 3 rmsd) in purple (negative)
and green (positive)

**Electron density around NAP B 301:**

$2mF_o-DF_c$ (at 0.7 rmsd) in gray
 mF_o-DF_c (at 3 rmsd) in purple (negative)
and green (positive)





6.5 Other polymers [i](#)

There are no such residues in this entry.