



Full wwPDB X-ray Structure Validation Report ⓘ

Jan 4, 2024 – 09:42 pm GMT

PDB ID : 5HVG
Title : Crystal Structure of Thrombin-activatable Fibrinolysis Inhibitor in Complex with an Inhibitory Nanobody (VHH-a204)
Authors : Zhou, X.; Weeks, S.D.; Strelkov, S.V.; Declerck, P.J.
Deposited on : 2016-01-28
Resolution : 3.05 Å (reported)

This is a Full wwPDB X-ray Structure Validation Report for a publicly released PDB entry.

We welcome your comments at validation@mail.wwpdb.org

A user guide is available at

<https://www.wwpdb.org/validation/2017/XrayValidationReportHelp>

with specific help available everywhere you see the ⓘ symbol.

The types of validation reports are described at

<http://www.wwpdb.org/validation/2017/FAQs#types>.

The following versions of software and data (see [references ⓘ](#)) were used in the production of this report:

MolProbity : 4.02b-467
Mogul : 1.8.4, CSD as541be (2020)
Xtriage (Phenix) : 1.13
EDS : 2.36
Percentile statistics : 20191225.v01 (using entries in the PDB archive December 25th 2019)
Refmac : 5.8.0158
CCP4 : 7.0.044 (Gargrove)
Ideal geometry (proteins) : Engh & Huber (2001)
Ideal geometry (DNA, RNA) : Parkinson et al. (1996)
Validation Pipeline (wwPDB-VP) : 2.36

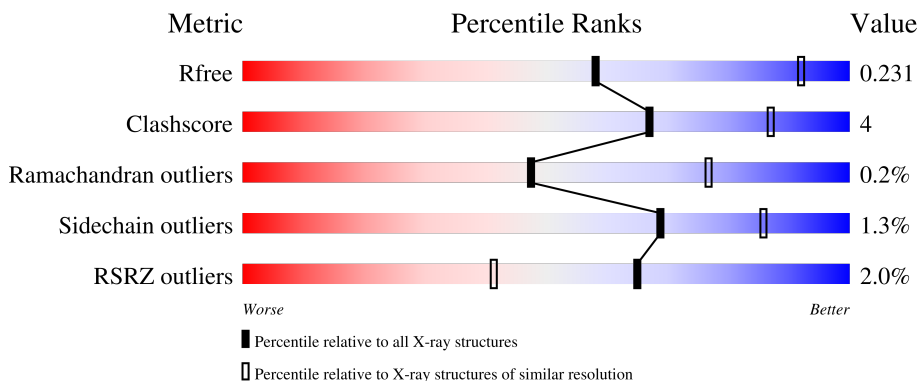
1 Overall quality at a glance

The following experimental techniques were used to determine the structure:

X-RAY DIFFRACTION

The reported resolution of this entry is 3.05 Å.

Percentile scores (ranging between 0-100) for global validation metrics of the entry are shown in the following graphic. The table shows the number of entries on which the scores are based.




Metric	Whole archive (#Entries)	Similar resolution (#Entries, resolution range(Å))
R_{free}	130704	1754 (3.10-3.02)
Clashscore	141614	1864 (3.10-3.02)
Ramachandran outliers	138981	1794 (3.10-3.02)
Sidechain outliers	138945	1793 (3.10-3.02)
RSRZ outliers	127900	1713 (3.10-3.02)

The table below summarises the geometric issues observed across the polymeric chains and their fit to the electron density. The red, orange, yellow and green segments of the lower bar indicate the fraction of residues that contain outliers for ≥ 3 , 2, 1 and 0 types of geometric quality criteria respectively. A grey segment represents the fraction of residues that are not modelled. The numeric value for each fraction is indicated below the corresponding segment, with a dot representing fractions $\leq 5\%$. The upper red bar (where present) indicates the fraction of residues that have poor fit to the electron density. The numeric value is given above the bar.

Mol	Chain	Length	Quality of chain
1	A	401	93% (green), 7% (yellow)
1	C	401	93% (green), 7% (yellow)
2	B	128	80% (green), 13% (yellow), 5% (grey)
2	D	128	15% (red), 81% (green), 11% (yellow), 7% (grey)
3	E	5	40% (green), 60% (yellow)

Continued on next page...

Continued from previous page...

Mol	Chain	Length	Quality of chain
4	F	2	 50% 50%

The following table lists non-polymeric compounds, carbohydrate monomers and non-standard residues in protein, DNA, RNA chains that are outliers for geometric or electron-density-fit criteria:

Mol	Type	Chain	Res	Chirality	Geometry	Clashes	Electron density
5	NAG	A	507	-	-	-	X

2 Entry composition i

There are 7 unique types of molecules in this entry. The entry contains 8485 atoms, of which 0 are hydrogens and 0 are deuteriums.

In the tables below, the ZeroOcc column contains the number of atoms modelled with zero occupancy, the AltConf column contains the number of residues with at least one atom in alternate conformation and the Trace column contains the number of residues modelled with at most 2 atoms.

- Molecule 1 is a protein called Carboxypeptidase B2.

Mol	Chain	Residues	Atoms					ZeroOcc	AltConf	Trace
			Total	C	N	O	S			
1	A	401	Total	C	N	O	S	0	0	0
			3253	2089	552	599	13			
1	C	400	Total	C	N	O	S	0	0	0
			3242	2080	551	598	13			

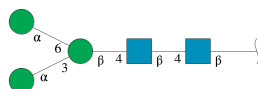
There are 8 discrepancies between the modelled and reference sequences:

Chain	Residue	Modelled	Actual	Comment	Reference
A	305	CYS	SER	engineered mutation	UNP Q96IY4
A	329	ILE	THR	engineered mutation	UNP Q96IY4
A	333	TYR	HIS	engineered mutation	UNP Q96IY4
A	335	GLN	HIS	engineered mutation	UNP Q96IY4
C	305	CYS	SER	engineered mutation	UNP Q96IY4
C	329	ILE	THR	engineered mutation	UNP Q96IY4
C	333	TYR	HIS	engineered mutation	UNP Q96IY4
C	335	GLN	HIS	engineered mutation	UNP Q96IY4

- Molecule 2 is a protein called VHH-a204.

Mol	Chain	Residues	Atoms					ZeroOcc	AltConf	Trace
			Total	C	N	O	S			
2	B	122	Total	C	N	O	S	0	0	0
			928	576	162	186	4			
2	D	119	Total	C	N	O	S	0	0	0
			907	565	158	180	4			

- Molecule 3 is an oligosaccharide called alpha-D-mannopyranose-(1-3)-[alpha-D-mannopyranose-(1-6)]beta-D-mannopyranose-(1-4)-2-acetamido-2-deoxy-beta-D-glucopyranose-(1-4)-2-acetamido-2-deoxy-beta-D-glucopyranose.



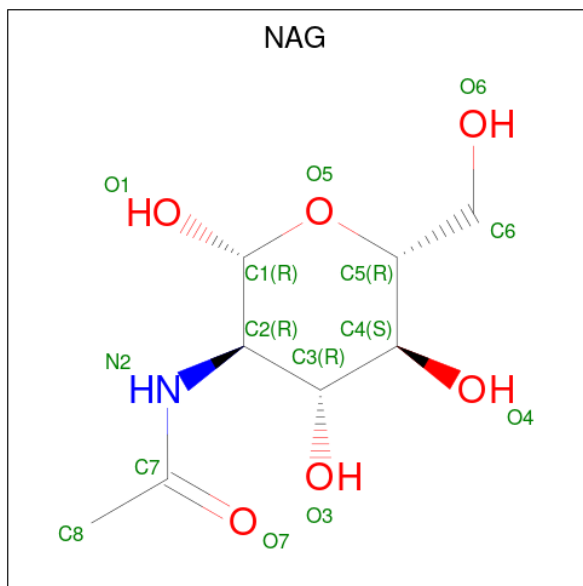
Mol	Chain	Residues	Atoms				ZeroOcc	AltConf	Trace
			Total	C	N	O			
3	E	5	61	34	2	25	0	0	0

- Molecule 4 is an oligosaccharide called 2-acetamido-2-deoxy-beta-D-glucopyranose-(1-4)-2-acetamido-2-deoxy-beta-D-glucopyranose.



Mol	Chain	Residues	Atoms				ZeroOcc	AltConf	Trace
			Total	C	N	O			
4	F	2	28	16	2	10	0	0	0

- Molecule 5 is 2-acetamido-2-deoxy-beta-D-glucopyranose (three-letter code: NAG) (formula: $C_8H_{15}NO_6$).

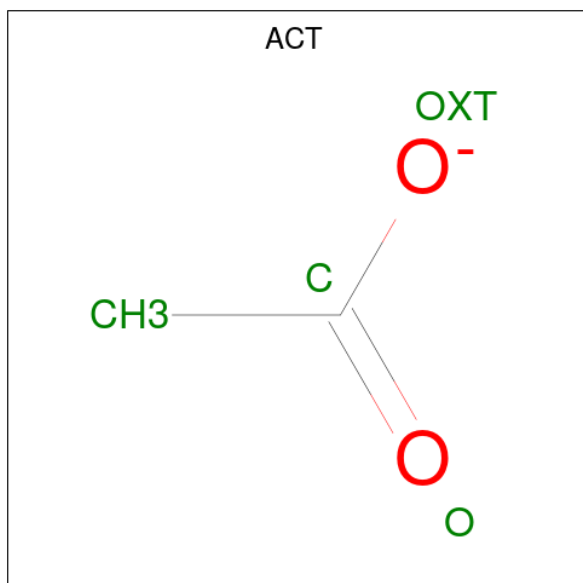


Mol	Chain	Residues	Atoms				ZeroOcc	AltConf
			Total	C	N	O		
5	A	1	14	8	1	5	0	0
5	A	1	14	8	1	5	0	0
5	A	1	14	8	1	5	0	0
5	C	1	14	8	1	5	0	0

- Molecule 6 is ZINC ION (three-letter code: ZN) (formula: Zn).

Mol	Chain	Residues	Atoms		ZeroOcc	AltConf
6	A	1	Total	Zn	0	0
			1	1		
6	C	1	Total	Zn	0	0
			1	1		

- Molecule 7 is ACETATE ION (three-letter code: ACT) (formula: C₂H₃O₂).



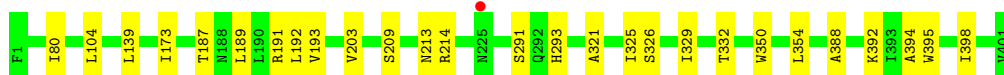
Mol	Chain	Residues	Atoms			ZeroOcc	AltConf
7	A	1	Total	C	O	0	0
			4	2	2		
7	C	1	Total	C	O	0	0
			4	2	2		

3 Residue-property plots [i](#)

These plots are drawn for all protein, RNA, DNA and oligosaccharide chains in the entry. The first graphic for a chain summarises the proportions of the various outlier classes displayed in the second graphic. The second graphic shows the sequence view annotated by issues in geometry and electron density. Residues are color-coded according to the number of geometric quality criteria for which they contain at least one outlier: green = 0, yellow = 1, orange = 2 and red = 3 or more. A red dot above a residue indicates a poor fit to the electron density ($RSRZ > 2$). Stretches of 2 or more consecutive residues without any outlier are shown as a green connector. Residues present in the sample, but not in the model, are shown in grey.

- Molecule 1: Carboxypeptidase B2

Chain A:  93% 7%




- Molecule 1: Carboxypeptidase B2

Chain C:  93% 7%




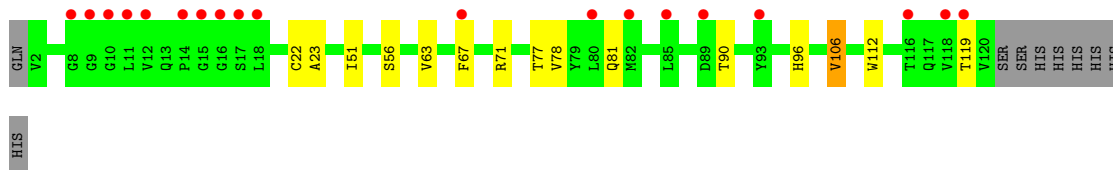
- Molecule 2: VHH-a204

Chain B:  80% 13% 5%



- Molecule 2: VHH-a204

Chain D:  15% 81% 11% 7%



- Molecule 3: alpha-D-mannopyranose-(1-3)-[alpha-D-mannopyranose-(1-6)]beta-D-mannopyranose-(1-4)-2-acetamido-2-deoxy-beta-D-glucopyranose-(1-4)-2-acetamido-2-deoxy-beta-D-glucopyranose

Chain E:  40% 60%



- Molecule 4: 2-acetamido-2-deoxy-beta-D-glucopyranose-(1-4)-2-acetamido-2-deoxy-beta-D-glucopyranose

Chain F:  50% 50%



4 Data and refinement statistics

Property	Value	Source
Space group	P 61	Depositor
Cell constants a, b, c, α , β , γ	193.27Å 193.27Å 111.77Å 90.00° 90.00° 120.00°	Depositor
Resolution (Å)	48.38 – 3.05 48.38 – 3.05	Depositor EDS
% Data completeness (in resolution range)	100.0 (48.38-3.05) 100.0 (48.38-3.05)	Depositor EDS
R_{merge}	0.24	Depositor
R_{sym}	(Not available)	Depositor
$\langle I/\sigma(I) \rangle$ ¹	1.39 (at 3.07Å)	Xtrriage
Refinement program	BUSTER-TNT 2.10.2	Depositor
R, R_{free}	0.179 , 0.212 0.203 , 0.231	Depositor DCC
R_{free} test set	2006 reflections (4.42%)	wwPDB-VP
Wilson B-factor (Å ²)	66.7	Xtrriage
Anisotropy	0.484	Xtrriage
Bulk solvent k_{sol} (e/Å ³), B_{sol} (Å ²)	0.30 , 55.5	EDS
L-test for twinning ²	$\langle L \rangle = 0.46$, $\langle L^2 \rangle = 0.29$	Xtrriage
Estimated twinning fraction	0.046 for h,-h-k,-l	Xtrriage
F_o, F_c correlation	0.94	EDS
Total number of atoms	8485	wwPDB-VP
Average B, all atoms (Å ²)	85.0	wwPDB-VP

Xtrriage's analysis on translational NCS is as follows: *The largest off-origin peak in the Patterson function is 2.13% of the height of the origin peak. No significant pseudotranslation is detected.*

¹Intensities estimated from amplitudes.

²Theoretical values of $\langle |L| \rangle$, $\langle L^2 \rangle$ for acentric reflections are 0.5, 0.333 respectively for untwinned datasets, and 0.375, 0.2 for perfectly twinned datasets.

5 Model quality [i](#)

5.1 Standard geometry [i](#)

Bond lengths and bond angles in the following residue types are not validated in this section: NAG, BMA, ZN, ACT, MAN

The Z score for a bond length (or angle) is the number of standard deviations the observed value is removed from the expected value. A bond length (or angle) with $|Z| > 5$ is considered an outlier worth inspection. RMSZ is the root-mean-square of all Z scores of the bond lengths (or angles).

Mol	Chain	Bond lengths		Bond angles	
		RMSZ	# Z >5	RMSZ	# Z >5
1	A	0.50	0/3341	0.68	0/4538
1	C	0.53	0/3329	0.69	0/4522
2	B	0.51	0/949	0.72	0/1289
2	D	0.49	0/928	0.70	0/1261
All	All	0.51	0/8547	0.69	0/11610

There are no bond length outliers.

There are no bond angle outliers.

There are no chirality outliers.

There are no planarity outliers.

5.2 Too-close contacts [i](#)

In the following table, the Non-H and H(model) columns list the number of non-hydrogen atoms and hydrogen atoms in the chain respectively. The H(added) column lists the number of hydrogen atoms added and optimized by MolProbity. The Clashes column lists the number of clashes within the asymmetric unit, whereas Symm-Clashes lists symmetry-related clashes.

Mol	Chain	Non-H	H(model)	H(added)	Clashes	Symm-Clashes
1	A	3253	0	3169	33	0
1	C	3242	0	3159	19	0
2	B	928	0	877	11	0
2	D	907	0	856	8	0
3	E	61	0	52	0	0
4	F	28	0	25	0	0
5	A	42	0	39	0	0
5	C	14	0	13	0	0
6	A	1	0	0	0	0

Continued on next page...

Continued from previous page...

Mol	Chain	Non-H	H(model)	H(added)	Clashes	Symm-Clashes
6	C	1	0	0	0	0
7	A	4	0	3	0	0
7	C	4	0	3	0	0
All	All	8485	0	8196	65	0

The all-atom clashscore is defined as the number of clashes found per 1000 atoms (including hydrogen atoms). The all-atom clashscore for this structure is 4.

All (65) close contacts within the same asymmetric unit are listed below, sorted by their clash magnitude.

Atom-1	Atom-2	Interatomic distance (Å)	Clash overlap (Å)
1:A:192:LEU:HD23	1:C:133:LYS:HG3	1.19	1.15
1:A:192:LEU:HD13	1:A:398:ILE:CD1	1.92	1.00
1:A:192:LEU:HD23	1:C:133:LYS:CG	1.97	0.93
1:A:192:LEU:HD22	1:A:398:ILE:HD13	1.55	0.88
1:A:192:LEU:HD13	1:A:398:ILE:HD11	1.58	0.85
1:A:192:LEU:CD2	1:C:133:LYS:HG3	2.11	0.76
2:B:52:THR:HG22	2:B:54:GLY:H	1.50	0.75
1:A:192:LEU:HD12	1:A:193:VAL:HG22	1.71	0.72
1:A:192:LEU:CD2	1:A:398:ILE:HD13	2.20	0.71
1:A:192:LEU:HD13	1:A:398:ILE:HD13	1.70	0.71
2:B:1:GLN:HG2	2:B:2:VAL:H	1.53	0.71
1:A:104:LEU:HD21	1:A:203:VAL:HG13	1.74	0.69
1:A:192:LEU:CD1	1:A:398:ILE:CD1	2.73	0.66
1:A:187:THR:HG22	1:A:191:ARG:NH2	2.14	0.63
1:A:139:LEU:HD12	1:A:173:ILE:HD13	1.82	0.62
1:A:192:LEU:CD1	1:A:398:ILE:HD13	2.32	0.59
1:A:192:LEU:CD1	1:A:193:VAL:HG22	2.34	0.58
2:D:63:VAL:HG11	2:D:67:PHE:CG	2.39	0.57
1:C:139:LEU:HD12	1:C:173:ILE:HD13	1.85	0.57
1:A:187:THR:HG22	1:A:191:ARG:HH22	1.68	0.56
1:A:192:LEU:CD1	1:A:398:ILE:HD11	2.34	0.56
1:A:350:TRP:O	1:A:354:LEU:HD23	2.06	0.55
1:A:104:LEU:CD2	1:A:203:VAL:HG13	2.35	0.55
1:A:394:ALA:O	1:A:398:ILE:HD12	2.08	0.53
2:B:90:THR:HG23	2:B:119:THR:HA	1.91	0.52
1:A:321:ALA:HB2	1:A:392:LYS:HG3	1.91	0.51
1:C:290:TYR:O	1:C:291:SER:HB3	2.10	0.51
1:C:326:SER:HB3	1:C:329:ILE:HD13	1.92	0.51
2:B:114:GLN:HG3	1:C:92:ARG:HB2	1.92	0.50
1:A:293:HIS:CE1	1:A:332:THR:HG1	2.30	0.49

Continued on next page...

Continued from previous page...

Atom-1	Atom-2	Interatomic distance (Å)	Clash overlap (Å)
1:A:395:TRP:CZ3	1:C:133:LYS:HG2	2.47	0.49
2:D:90:THR:HG23	2:D:119:THR:HA	1.94	0.49
1:C:159:HIS:HB2	1:C:162:GLU:CD	2.33	0.49
1:A:192:LEU:HD12	1:A:193:VAL:N	2.28	0.49
1:A:326:SER:HB3	1:A:329:ILE:HD13	1.94	0.49
2:D:63:VAL:HG11	2:D:67:PHE:CD2	2.48	0.48
1:A:209:SER:HA	1:A:213:ASN:O	2.15	0.46
1:C:209:SER:HA	1:C:213:ASN:O	2.14	0.46
1:C:141:VAL:HB	1:C:195:PHE:HB2	1.98	0.46
1:A:80:ILE:HG12	1:A:214:ARG:HG2	1.98	0.46
1:C:186:TYR:N	1:C:186:TYR:CD2	2.83	0.46
1:C:186:TYR:N	1:C:186:TYR:HD2	2.13	0.46
1:A:191:ARG:CZ	1:C:135:PRO:HD3	2.45	0.46
2:B:52:THR:HB	2:B:56:SER:H	1.80	0.46
1:A:325:ILE:HG13	1:A:388:ALA:HB2	1.99	0.45
2:B:1:GLN:HG2	2:B:2:VAL:N	2.28	0.45
2:D:23:ALA:HA	2:D:77:THR:HG22	1.98	0.45
2:B:34:MET:HB2	2:B:78:VAL:HG11	1.98	0.45
2:D:106:VAL:HG12	2:D:112:TRP:HZ2	1.82	0.45
1:C:294:ILE:HG12	1:C:362:ILE:HG12	1.99	0.44
1:A:192:LEU:HD22	1:A:398:ILE:HG21	1.99	0.44
1:A:189:LEU:HD12	1:A:192:LEU:HD11	2.01	0.43
2:D:67:PHE:HA	2:D:81:GLN:O	2.18	0.43
2:B:106:VAL:HG12	2:B:112:TRP:HZ2	1.81	0.43
1:C:321:ALA:HB2	1:C:392:LYS:HG3	2.00	0.43
2:D:51:ILE:HD12	2:D:71:ARG:HG2	2.02	0.42
1:C:322:ILE:HG21	1:C:331:TYR:CD1	2.54	0.41
1:A:293:HIS:CE1	1:A:332:THR:OG1	2.73	0.41
2:B:51:ILE:HD12	2:B:71:ARG:HG2	2.02	0.41
2:B:35:GLY:O	2:B:95:CYS:HA	2.21	0.41
2:B:106:VAL:HG12	2:B:112:TRP:CZ2	2.56	0.41
1:C:283:ALA:HB2	1:C:397:VAL:HG21	2.02	0.40
1:A:187:THR:CG2	1:A:191:ARG:HH22	2.31	0.40
2:D:71:ARG:HB3	2:D:78:VAL:HG12	2.02	0.40
1:C:20:LEU:HD23	1:C:20:LEU:HA	1.97	0.40

There are no symmetry-related clashes.

5.3 Torsion angles [i](#)

5.3.1 Protein backbone [i](#)

In the following table, the Percentiles column shows the percent Ramachandran outliers of the chain as a percentile score with respect to all X-ray entries followed by that with respect to entries of similar resolution.

The Analysed column shows the number of residues for which the backbone conformation was analysed, and the total number of residues.

Mol	Chain	Analysed	Favoured	Allowed	Outliers	Percentiles	
1	A	399/401 (100%)	386 (97%)	12 (3%)	1 (0%)	41	70
1	C	398/401 (99%)	383 (96%)	14 (4%)	1 (0%)	41	70
2	B	120/128 (94%)	114 (95%)	6 (5%)	0	100	100
2	D	117/128 (91%)	110 (94%)	7 (6%)	0	100	100
All	All	1034/1058 (98%)	993 (96%)	39 (4%)	2 (0%)	47	77

All (2) Ramachandran outliers are listed below:

Mol	Chain	Res	Type
1	A	291	SER
1	C	291	SER

5.3.2 Protein sidechains [i](#)

In the following table, the Percentiles column shows the percent sidechain outliers of the chain as a percentile score with respect to all X-ray entries followed by that with respect to entries of similar resolution.

The Analysed column shows the number of residues for which the sidechain conformation was analysed, and the total number of residues.

Mol	Chain	Analysed	Rotameric	Outliers	Percentiles	
1	A	354/354 (100%)	354 (100%)	0	100	100
1	C	353/354 (100%)	350 (99%)	3 (1%)	81	91
2	B	98/104 (94%)	93 (95%)	5 (5%)	24	53
2	D	95/104 (91%)	91 (96%)	4 (4%)	30	60
All	All	900/916 (98%)	888 (99%)	12 (1%)	69	86

All (12) residues with a non-rotameric sidechain are listed below:

Mol	Chain	Res	Type
2	B	22	CYS
2	B	44	GLN
2	B	56	SER
2	B	67	PHE
2	B	106	VAL
1	C	251	SER
1	C	332	THR
1	C	338	GLU
2	D	22	CYS
2	D	56	SER
2	D	96	HIS
2	D	106	VAL

Sometimes sidechains can be flipped to improve hydrogen bonding and reduce clashes. All (2) such sidechains are listed below:

Mol	Chain	Res	Type
1	A	57	ASN
1	C	82	GLN

5.3.3 RNA [i](#)

There are no RNA molecules in this entry.

5.4 Non-standard residues in protein, DNA, RNA chains [i](#)

There are no non-standard protein/DNA/RNA residues in this entry.

5.5 Carbohydrates [i](#)

7 monosaccharides are modelled in this entry.

In the following table, the Counts columns list the number of bonds (or angles) for which Mogul statistics could be retrieved, the number of bonds (or angles) that are observed in the model and the number of bonds (or angles) that are defined in the Chemical Component Dictionary. The Link column lists molecule types, if any, to which the group is linked. The Z score for a bond length (or angle) is the number of standard deviations the observed value is removed from the expected value. A bond length (or angle) with $|Z| > 2$ is considered an outlier worth inspection. RMSZ is the root-mean-square of all Z scores of the bond lengths (or angles).

Mol	Type	Chain	Res	Link	Bond lengths			Bond angles		
					Counts	RMSZ	$\# Z > 2$	Counts	RMSZ	$\# Z > 2$
3	NAG	E	1	1,3	14,14,15	0.31	0	17,19,21	0.45	0

Mol	Type	Chain	Res	Link	Bond lengths			Bond angles		
					Counts	RMSZ	# Z > 2	Counts	RMSZ	# Z > 2
3	NAG	E	2	3	14,14,15	0.46	0	17,19,21	1.69	3 (17%)
3	BMA	E	3	3	11,11,12	0.37	0	15,15,17	0.74	0
3	MAN	E	4	3	11,11,12	0.43	0	15,15,17	1.27	1 (6%)
3	MAN	E	5	3	11,11,12	0.58	0	15,15,17	1.55	2 (13%)
4	NAG	F	1	1,4	14,14,15	0.38	0	17,19,21	1.23	2 (11%)
4	NAG	F	2	4	14,14,15	0.31	0	17,19,21	0.57	0

In the following table, the Chirals column lists the number of chiral outliers, the number of chiral centers analysed, the number of these observed in the model and the number defined in the Chemical Component Dictionary. Similar counts are reported in the Torsion and Rings columns. '-' means no outliers of that kind were identified.

Mol	Type	Chain	Res	Link	Chirals	Torsions	Rings
3	NAG	E	1	1,3	-	1/6/23/26	0/1/1/1
3	NAG	E	2	3	-	1/6/23/26	0/1/1/1
3	BMA	E	3	3	-	0/2/19/22	0/1/1/1
3	MAN	E	4	3	-	0/2/19/22	1/1/1/1
3	MAN	E	5	3	-	2/2/19/22	1/1/1/1
4	NAG	F	1	1,4	-	2/6/23/26	0/1/1/1
4	NAG	F	2	4	-	1/6/23/26	0/1/1/1

There are no bond length outliers.

All (8) bond angle outliers are listed below:

Mol	Chain	Res	Type	Atoms	Z	Observed(°)	Ideal(°)
3	E	5	MAN	C1-O5-C5	5.31	119.39	112.19
3	E	2	NAG	C1-C2-N2	4.75	118.60	110.49
3	E	4	MAN	C1-O5-C5	4.49	118.27	112.19
3	E	2	NAG	C2-N2-C7	4.08	128.71	122.90
4	F	1	NAG	O5-C1-C2	-3.72	105.41	111.29
3	E	5	MAN	C1-C2-C3	2.35	112.56	109.67
3	E	2	NAG	C1-O5-C5	2.09	115.02	112.19
4	F	1	NAG	O4-C4-C3	-2.04	105.63	110.35

There are no chirality outliers.

All (7) torsion outliers are listed below:

Mol	Chain	Res	Type	Atoms
3	E	5	MAN	O5-C5-C6-O6
3	E	5	MAN	C4-C5-C6-O6

Continued on next page...

Continued from previous page...

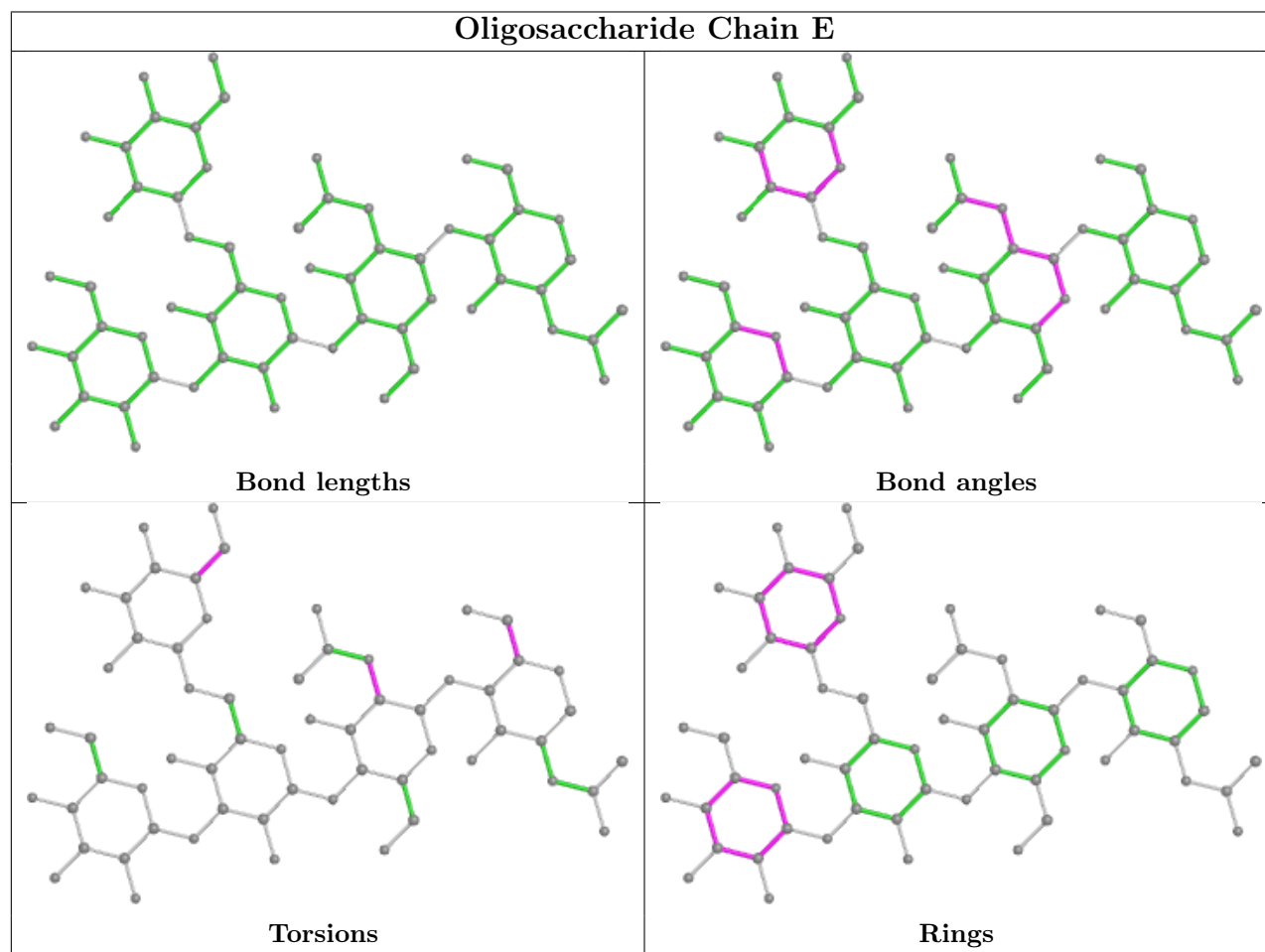
Mol	Chain	Res	Type	Atoms
3	E	2	NAG	C1-C2-N2-C7
4	F	2	NAG	O5-C5-C6-O6
4	F	1	NAG	C4-C5-C6-O6
4	F	1	NAG	O5-C5-C6-O6
3	E	1	NAG	O5-C5-C6-O6

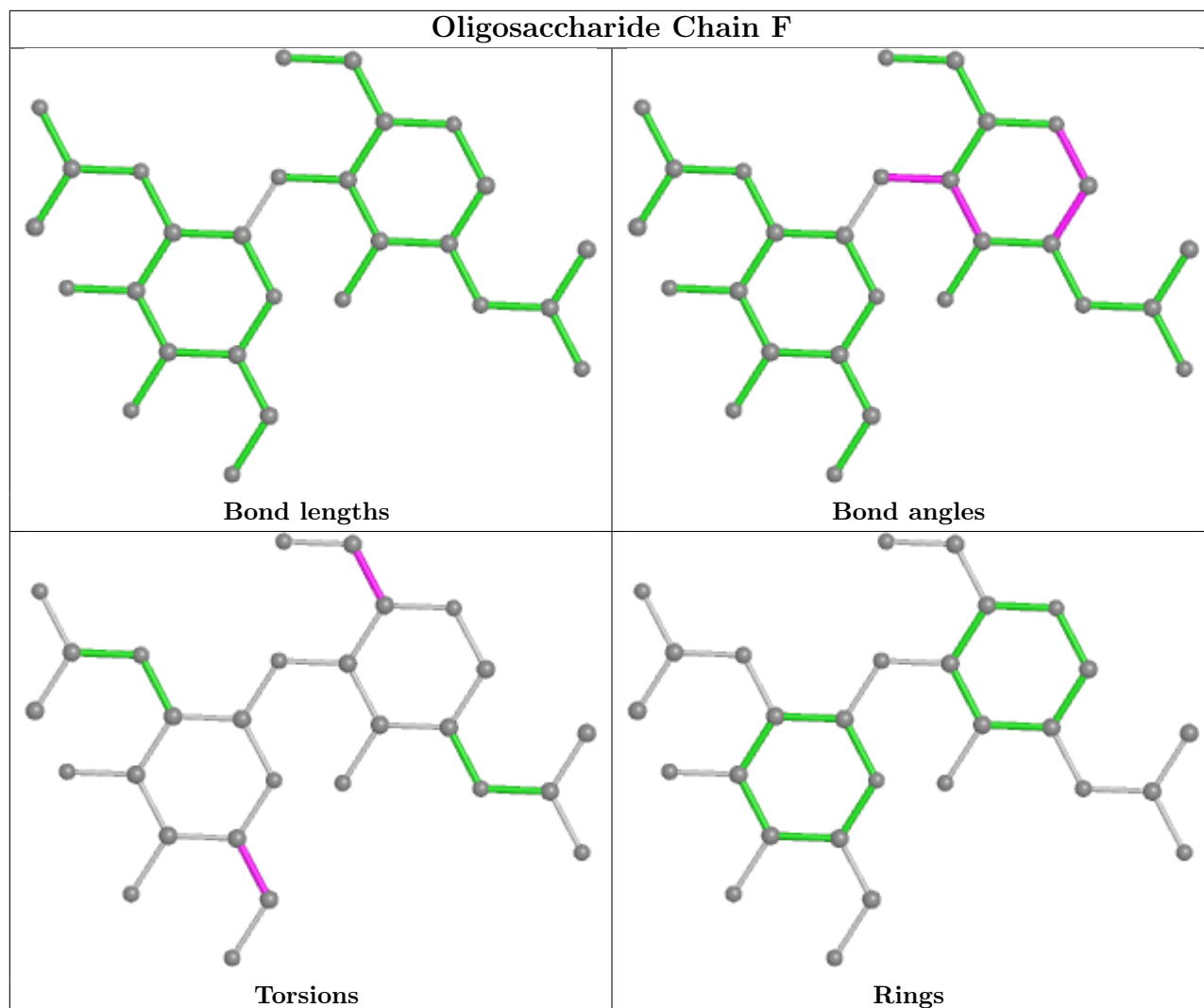
All (2) ring outliers are listed below:

Mol	Chain	Res	Type	Atoms
3	E	4	MAN	C1-C2-C3-C4-C5-O5
3	E	5	MAN	C1-C2-C3-C4-C5-O5

No monomer is involved in short contacts.

The following is a two-dimensional graphical depiction of Mogul quality analysis of bond lengths, bond angles, torsion angles, and ring geometry for oligosaccharide.





5.6 Ligand geometry [i](#)

Of 8 ligands modelled in this entry, 2 are monoatomic - leaving 6 for Mogul analysis.

In the following table, the Counts columns list the number of bonds (or angles) for which Mogul statistics could be retrieved, the number of bonds (or angles) that are observed in the model and the number of bonds (or angles) that are defined in the Chemical Component Dictionary. The Link column lists molecule types, if any, to which the group is linked. The Z score for a bond length (or angle) is the number of standard deviations the observed value is removed from the expected value. A bond length (or angle) with $|Z| > 2$ is considered an outlier worth inspection. RMSZ is the root-mean-square of all Z scores of the bond lengths (or angles).

Mol	Type	Chain	Res	Link	Bond lengths			Bond angles		
					Counts	RMSZ	$\# Z > 2$	Counts	RMSZ	$\# Z > 2$
5	NAG	A	507	1	14,14,15	0.44	0	17,19,21	0.77	1 (5%)
5	NAG	A	508	1	14,14,15	0.36	0	17,19,21	0.72	0
7	ACT	A	510	6	3,3,3	1.44	0	3,3,3	0.67	0

Mol	Type	Chain	Res	Link	Bond lengths			Bond angles		
					Counts	RMSZ	# Z > 2	Counts	RMSZ	# Z > 2
5	NAG	C	503	1	14,14,15	0.40	0	17,19,21	1.37	2 (11%)
5	NAG	A	506	1	14,14,15	0.40	0	17,19,21	0.86	1 (5%)
7	ACT	C	505	-	3,3,3	0.88	0	3,3,3	1.23	0

In the following table, the Chirals column lists the number of chiral outliers, the number of chiral centers analysed, the number of these observed in the model and the number defined in the Chemical Component Dictionary. Similar counts are reported in the Torsion and Rings columns. '-' means no outliers of that kind were identified.

Mol	Type	Chain	Res	Link	Chirals	Torsions	Rings
5	NAG	C	503	1	-	2/6/23/26	0/1/1/1
5	NAG	A	506	1	-	0/6/23/26	0/1/1/1
5	NAG	A	508	1	-	2/6/23/26	0/1/1/1
5	NAG	A	507	1	-	0/6/23/26	0/1/1/1

There are no bond length outliers.

All (4) bond angle outliers are listed below:

Mol	Chain	Res	Type	Atoms	Z	Observed(°)	Ideal(°)
5	C	503	NAG	O5-C1-C2	-3.88	105.16	111.29
5	C	503	NAG	C1-O5-C5	3.15	116.47	112.19
5	A	507	NAG	C1-O5-C5	2.27	115.27	112.19
5	A	506	NAG	C3-C4-C5	2.03	113.85	110.24

There are no chirality outliers.

All (4) torsion outliers are listed below:

Mol	Chain	Res	Type	Atoms
5	A	508	NAG	C8-C7-N2-C2
5	C	503	NAG	O5-C5-C6-O6
5	C	503	NAG	C4-C5-C6-O6
5	A	508	NAG	O7-C7-N2-C2

There are no ring outliers.

No monomer is involved in short contacts.

5.7 Other polymers [i](#)

There are no such residues in this entry.

5.8 Polymer linkage issues

There are no chain breaks in this entry.

6 Fit of model and data [i](#)

6.1 Protein, DNA and RNA chains [i](#)

In the following table, the column labelled ‘#RSRZ > 2’ contains the number (and percentage) of RSRZ outliers, followed by percent RSRZ outliers for the chain as percentile scores relative to all X-ray entries and entries of similar resolution. The OWAB column contains the minimum, median, 95th percentile and maximum values of the occupancy-weighted average B-factor per residue. The column labelled ‘Q < 0.9’ lists the number of (and percentage) of residues with an average occupancy less than 0.9.

Mol	Chain	Analysed	<RSRZ>	#RSRZ>2	OWAB(Å ²)	Q<0.9
1	A	401/401 (100%)	-0.29	1 (0%) 95 89	57, 83, 120, 162	0
1	C	400/401 (99%)	-0.33	1 (0%) 94 85	44, 69, 111, 137	0
2	B	122/128 (95%)	-0.19	0 100 100	59, 79, 120, 141	0
2	D	119/128 (92%)	0.66	19 (15%) 1 0	66, 108, 146, 161	0
All	All	1042/1058 (98%)	-0.18	21 (2%) 65 41	44, 81, 124, 162	0

All (21) RSRZ outliers are listed below:

Mol	Chain	Res	Type	RSRZ
2	D	8	GLY	4.1
2	D	15	GLY	3.8
2	D	10	GLY	3.2
2	D	17	SER	3.2
2	D	11	LEU	3.1
2	D	18	LEU	3.1
2	D	85	LEU	2.9
2	D	118	VAL	2.6
2	D	93	TYR	2.6
2	D	82	MET	2.6
2	D	9	GLY	2.4
2	D	119	THR	2.4
2	D	89	ASP	2.2
2	D	67	PHE	2.2
1	A	225	ASN	2.2
2	D	16	GLY	2.1
2	D	12	VAL	2.1
2	D	80	LEU	2.1
2	D	14	PRO	2.1
1	C	76	VAL	2.0
2	D	116	THR	2.0

6.2 Non-standard residues in protein, DNA, RNA chains [i](#)

There are no non-standard protein/DNA/RNA residues in this entry.

6.3 Carbohydrates [i](#)

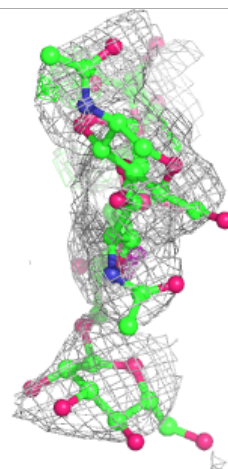
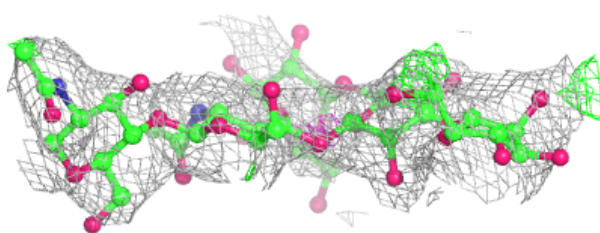
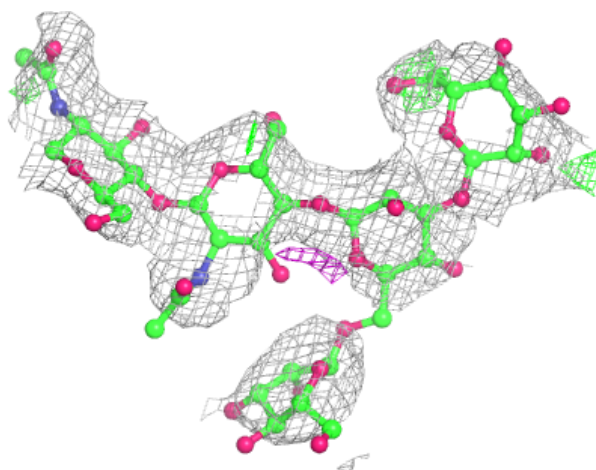
In the following table, the Atoms column lists the number of modelled atoms in the group and the number defined in the chemical component dictionary. The B-factors column lists the minimum, median, 95th percentile and maximum values of B factors of atoms in the group. The column labelled 'Q< 0.9' lists the number of atoms with occupancy less than 0.9.

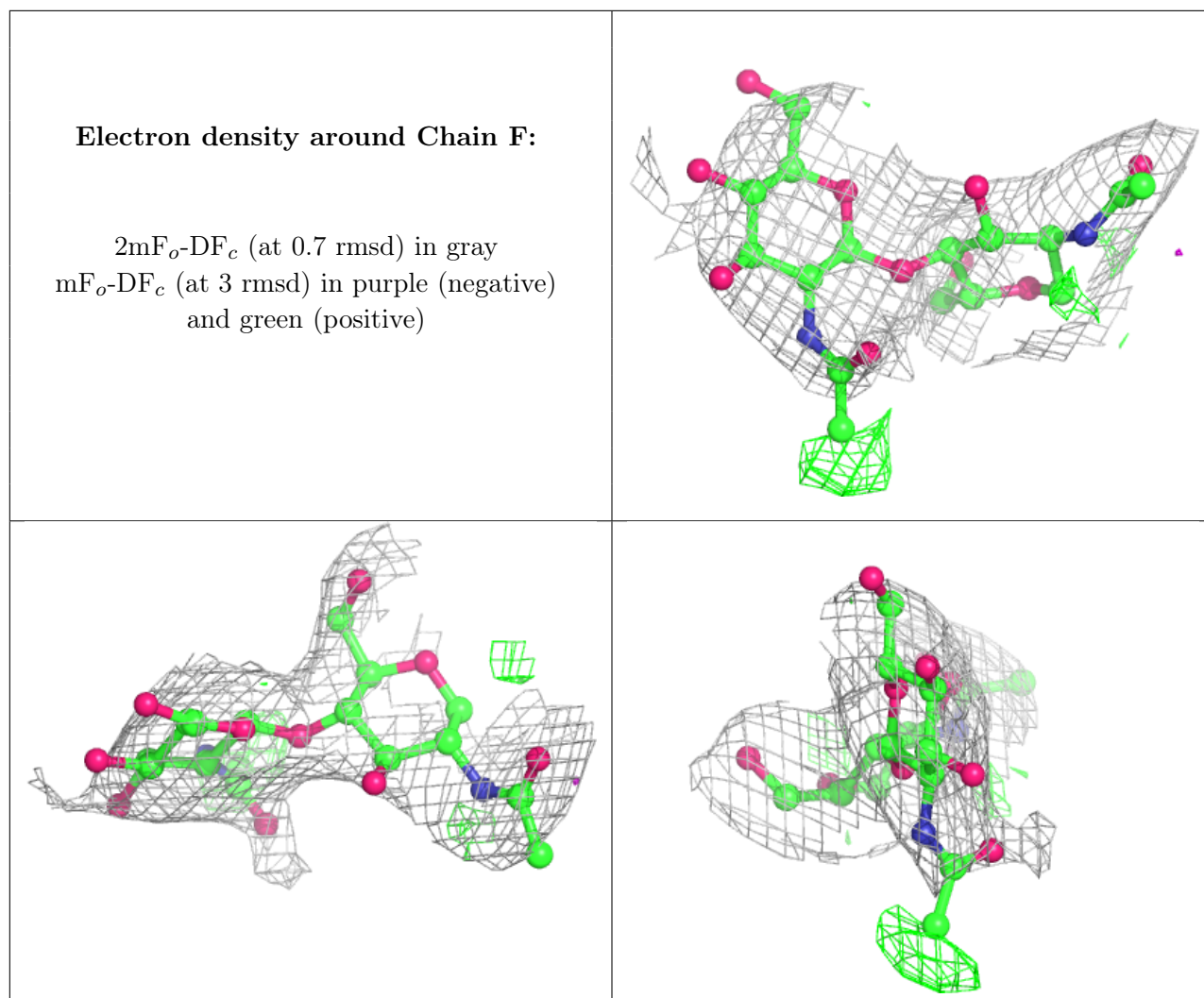
Mol	Type	Chain	Res	Atoms	RSCC	RSR	B-factors(Å ²)	Q<0.9
3	MAN	E	4	11/12	0.72	0.25	159,165,166,166	0
3	MAN	E	5	11/12	0.77	0.34	158,164,164,164	0
4	NAG	F	2	14/15	0.80	0.37	147,150,153,154	0
3	BMA	E	3	11/12	0.82	0.34	161,162,164,166	0
4	NAG	F	1	14/15	0.83	0.19	115,131,139,146	0
3	NAG	E	2	14/15	0.84	0.23	134,146,153,158	0
3	NAG	E	1	14/15	0.85	0.21	116,122,129,137	0

The following is a graphical depiction of the model fit to experimental electron density for oligosaccharide. Each fit is shown from different orientation to approximate a three-dimensional view.

Electron density around Chain E:

$2mF_o-DF_c$ (at 0.7 rmsd) in gray
 mF_o-DF_c (at 3 rmsd) in purple (negative)
and green (positive)





6.4 Ligands [i](#)

In the following table, the Atoms column lists the number of modelled atoms in the group and the number defined in the chemical component dictionary. The B-factors column lists the minimum, median, 95th percentile and maximum values of B factors of atoms in the group. The column labelled 'Q< 0.9' lists the number of atoms with occupancy less than 0.9.

Mol	Type	Chain	Res	Atoms	RSCC	RSR	B-factors(Å ²)	Q<0.9
5	NAG	A	506	14/15	0.77	0.21	103,113,116,117	0
5	NAG	A	507	14/15	0.80	0.42	130,131,132,134	0
5	NAG	A	508	14/15	0.80	0.34	146,151,154,155	0
5	NAG	C	503	14/15	0.83	0.31	126,129,132,132	0
7	ACT	C	505	4/4	0.93	0.26	79,81,83,87	0
7	ACT	A	510	4/4	0.97	0.15	89,90,91,93	0
6	ZN	A	509	1/1	0.99	0.14	71,71,71,71	0
6	ZN	C	504	1/1	0.99	0.18	61,61,61,61	0

6.5 Other polymers [i](#)

There are no such residues in this entry.