



Full wwPDB X-ray Structure Validation Report ⓘ

Jan 2, 2024 – 08:52 am GMT

PDB ID : 5FY8
Title : Crystal structure of human JMJD2A in complex with D-threo-isocitrate
Authors : Nowak, R.; Kopec, J.; Johansson, C.; Szykowska, A.; von Delft, F.; Arrow-smith, C.H.; Bountra, C.; Edwards, A.; Oppermann, U.
Deposited on : 2016-03-04
Resolution : 2.34 Å(reported)

This is a Full wwPDB X-ray Structure Validation Report for a publicly released PDB entry.

We welcome your comments at validation@mail.wwpdb.org

A user guide is available at

<https://www.wwpdb.org/validation/2017/XrayValidationReportHelp>

with specific help available everywhere you see the ⓘ symbol.

The types of validation reports are described at

<http://www.wwpdb.org/validation/2017/FAQs#types>.

The following versions of software and data (see [references ⓘ](#)) were used in the production of this report:

MolProbity : 4.02b-467
Mogul : 1.8.4, CSD as541be (2020)
Xtriage (Phenix) : 1.13
EDS : 2.36
Percentile statistics : 20191225.v01 (using entries in the PDB archive December 25th 2019)
Refmac : 5.8.0158
CCP4 : 7.0.044 (Gargrove)
Ideal geometry (proteins) : Engh & Huber (2001)
Ideal geometry (DNA, RNA) : Parkinson et al. (1996)
Validation Pipeline (wwPDB-VP) : 2.36

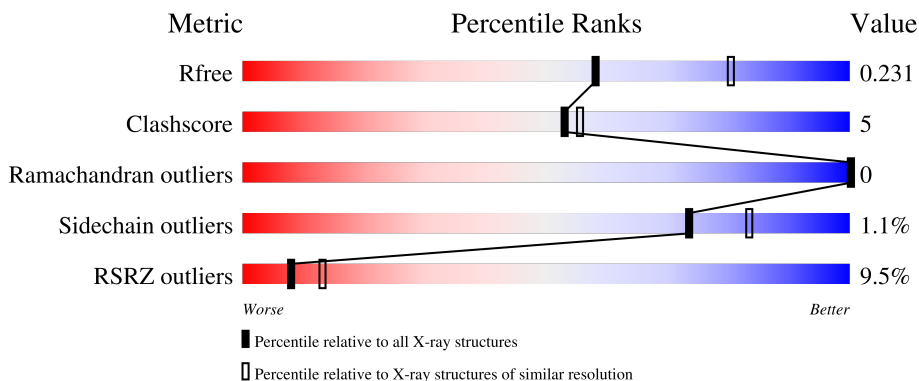
1 Overall quality at a glance

The following experimental techniques were used to determine the structure:

X-RAY DIFFRACTION

The reported resolution of this entry is 2.34 Å.

Percentile scores (ranging between 0-100) for global validation metrics of the entry are shown in the following graphic. The table shows the number of entries on which the scores are based.



Metric	Whole archive (#Entries)	Similar resolution (#Entries, resolution range(Å))
R_{free}	130704	2096 (2.36-2.32)
Clashscore	141614	2193 (2.36-2.32)
Ramachandran outliers	138981	2159 (2.36-2.32)
Sidechain outliers	138945	2160 (2.36-2.32)
RSRZ outliers	127900	2067 (2.36-2.32)

The table below summarises the geometric issues observed across the polymeric chains and their fit to the electron density. The red, orange, yellow and green segments of the lower bar indicate the fraction of residues that contain outliers for ≥ 3 , 2, 1 and 0 types of geometric quality criteria respectively. A grey segment represents the fraction of residues that are not modelled. The numeric value for each fraction is indicated below the corresponding segment, with a dot representing fractions $\leq 5\%$. The upper red bar (where present) indicates the fraction of residues that have poor fit to the electron density. The numeric value is given above the bar.

Mol	Chain	Length	Quality of chain
1	A	381	
1	B	381	

The following table lists non-polymeric compounds, carbohydrate monomers and non-standard residues in protein, DNA, RNA chains that are outliers for geometric or electron-density-fit criteria:

Mol	Type	Chain	Res	Chirality	Geometry	Clashes	Electron density
4	N81	B	1354	X	-	-	-
5	DMS	A	1355	-	-	X	-

2 Entry composition [i](#)

There are 7 unique types of molecules in this entry. The entry contains 5864 atoms, of which 0 are hydrogens and 0 are deuteriums.

In the tables below, the ZeroOcc column contains the number of atoms modelled with zero occupancy, the AltConf column contains the number of residues with at least one atom in alternate conformation and the Trace column contains the number of residues modelled with at most 2 atoms.

- Molecule 1 is a protein called LYSINE-SPECIFIC DEMETHYLASE 4A.

Mol	Chain	Residues	Atoms					ZeroOcc	AltConf	Trace
			Total	C	N	O	S			
1	A	350	2796	1816	453	512	15	0	2	0
1	B	347	2806	1818	467	506	15	0	3	0

There are 44 discrepancies between the modelled and reference sequences:

Chain	Residue	Modelled	Actual	Comment	Reference
A	-21	MET	-	expression tag	UNP O75164
A	-20	HIS	-	expression tag	UNP O75164
A	-19	HIS	-	expression tag	UNP O75164
A	-18	HIS	-	expression tag	UNP O75164
A	-17	HIS	-	expression tag	UNP O75164
A	-16	HIS	-	expression tag	UNP O75164
A	-15	HIS	-	expression tag	UNP O75164
A	-14	SER	-	expression tag	UNP O75164
A	-13	SER	-	expression tag	UNP O75164
A	-12	GLY	-	expression tag	UNP O75164
A	-11	VAL	-	expression tag	UNP O75164
A	-10	ASP	-	expression tag	UNP O75164
A	-9	LEU	-	expression tag	UNP O75164
A	-8	GLY	-	expression tag	UNP O75164
A	-7	THR	-	expression tag	UNP O75164
A	-6	GLU	-	expression tag	UNP O75164
A	-5	ASN	-	expression tag	UNP O75164
A	-4	LEU	-	expression tag	UNP O75164
A	-3	TYR	-	expression tag	UNP O75164
A	-2	PHE	-	expression tag	UNP O75164
A	-1	GLN	-	expression tag	UNP O75164
A	0	SER	-	expression tag	UNP O75164
B	-21	MET	-	expression tag	UNP O75164
B	-20	HIS	-	expression tag	UNP O75164
B	-19	HIS	-	expression tag	UNP O75164

Continued on next page...

Continued from previous page...

Chain	Residue	Modelled	Actual	Comment	Reference
B	-18	HIS	-	expression tag	UNP O75164
B	-17	HIS	-	expression tag	UNP O75164
B	-16	HIS	-	expression tag	UNP O75164
B	-15	HIS	-	expression tag	UNP O75164
B	-14	SER	-	expression tag	UNP O75164
B	-13	SER	-	expression tag	UNP O75164
B	-12	GLY	-	expression tag	UNP O75164
B	-11	VAL	-	expression tag	UNP O75164
B	-10	ASP	-	expression tag	UNP O75164
B	-9	LEU	-	expression tag	UNP O75164
B	-8	GLY	-	expression tag	UNP O75164
B	-7	THR	-	expression tag	UNP O75164
B	-6	GLU	-	expression tag	UNP O75164
B	-5	ASN	-	expression tag	UNP O75164
B	-4	LEU	-	expression tag	UNP O75164
B	-3	TYR	-	expression tag	UNP O75164
B	-2	PHE	-	expression tag	UNP O75164
B	-1	GLN	-	expression tag	UNP O75164
B	0	SER	-	expression tag	UNP O75164

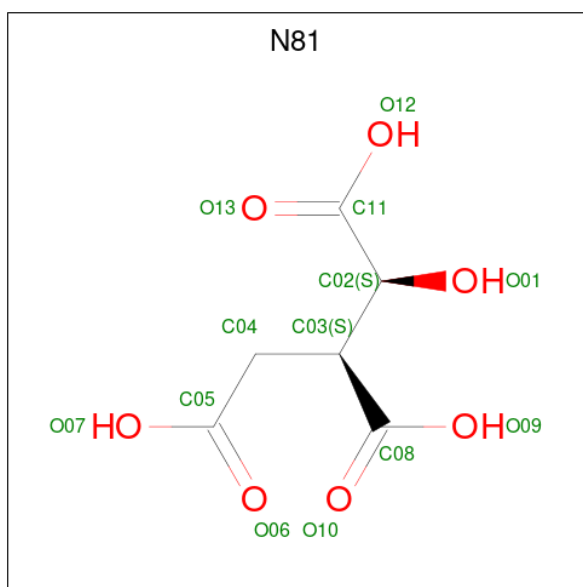
- Molecule 2 is NICKEL (II) ION (three-letter code: NI) (formula: Ni).

Mol	Chain	Residues	Atoms	ZeroOcc	AltConf
2	A	1	Total Ni 1 1	0	0
2	B	1	Total Ni 1 1	0	0

- Molecule 3 is ZINC ION (three-letter code: ZN) (formula: Zn).

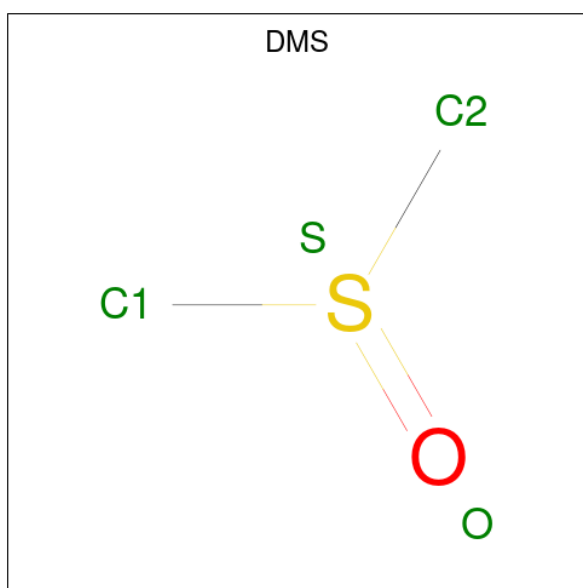
Mol	Chain	Residues	Atoms	ZeroOcc	AltConf
3	A	1	Total Zn 1 1	0	0
3	B	1	Total Zn 1 1	0	0

- Molecule 4 is 3-carboxy-2,3-dideoxy-D-erythro-pentanic acid (three-letter code: N81) (formula: C₆H₈O₇).



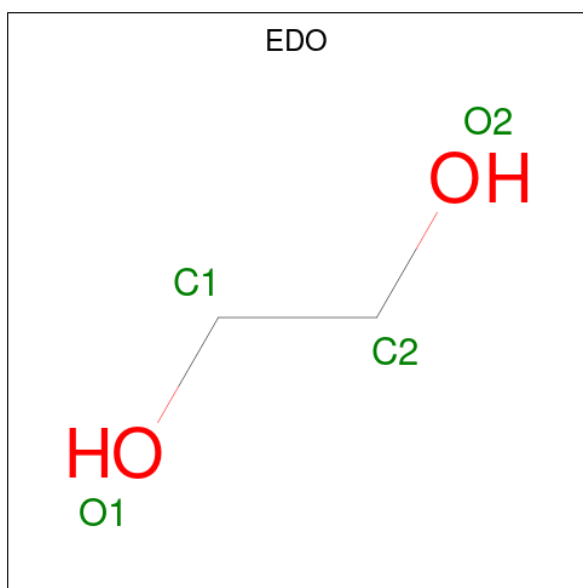
Mol	Chain	Residues	Atoms			ZeroOcc	AltConf
4	A	1	Total	C	O	0	0
			13	6	7		
4	B	1	Total	C	O	0	0
			13	6	7		

- Molecule 5 is DIMETHYL SULFOXIDE (three-letter code: DMS) (formula: C_2H_6OS).



Mol	Chain	Residues	Atoms				ZeroOcc	AltConf
5	A	1	Total	C	O	S	0	0
			4	2	1	1		
5	B	1	Total	C	O	S	0	0
			4	2	1	1		

- Molecule 6 is 1,2-ETHANEDIOL (three-letter code: EDO) (formula: C₂H₆O₂).



Mol	Chain	Residues	Atoms	ZeroOcc	AltConf
6	A	1	Total C O 4 2 2	0	0
6	A	1	Total C O 4 2 2	0	0
6	A	1	Total C O 4 2 2	0	0
6	B	1	Total C O 4 2 2	0	0
6	B	1	Total C O 4 2 2	0	0
6	B	1	Total C O 4 2 2	0	0
6	B	1	Total C O 4 2 2	0	0

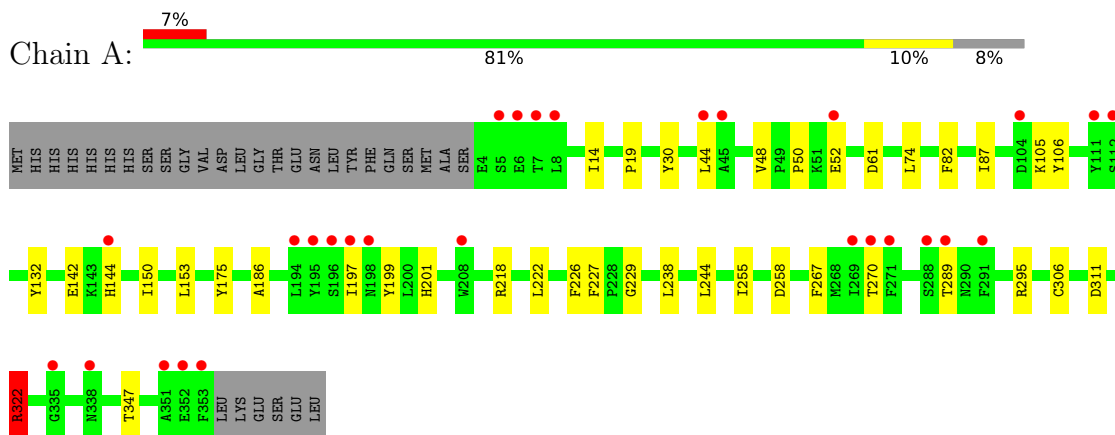
- Molecule 7 is water.

Mol	Chain	Residues	Atoms	ZeroOcc	AltConf
7	A	108	Total O 108 108	0	0
7	B	88	Total O 88 88	0	0

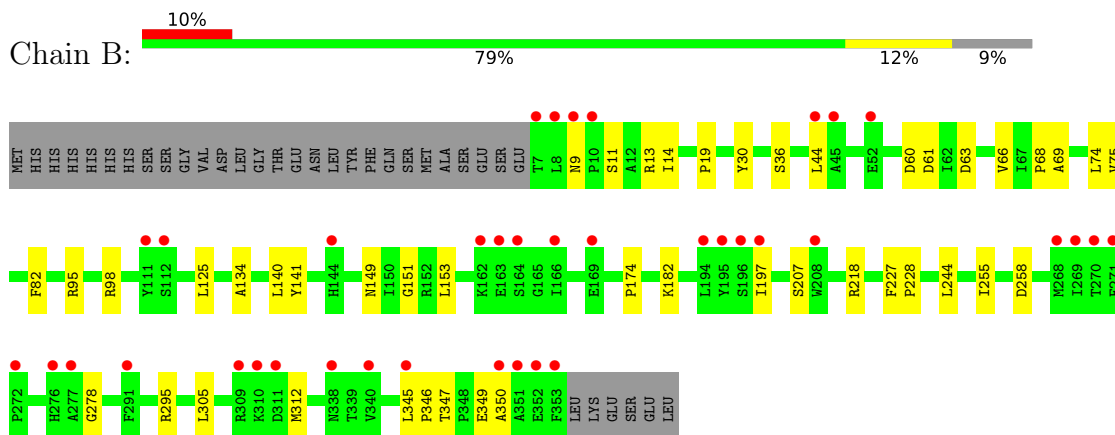
3 Residue-property plots [i](#)

These plots are drawn for all protein, RNA, DNA and oligosaccharide chains in the entry. The first graphic for a chain summarises the proportions of the various outlier classes displayed in the second graphic. The second graphic shows the sequence view annotated by issues in geometry and electron density. Residues are color-coded according to the number of geometric quality criteria for which they contain at least one outlier: green = 0, yellow = 1, orange = 2 and red = 3 or more. A red dot above a residue indicates a poor fit to the electron density ($RSRZ > 2$). Stretches of 2 or more consecutive residues without any outlier are shown as a green connector. Residues present in the sample, but not in the model, are shown in grey.

- Molecule 1: LYSINE-SPECIFIC DEMETHYLASE 4A



- Molecule 1: LYSINE-SPECIFIC DEMETHYLASE 4A



4 Data and refinement statistics

Property	Value	Source
Space group	P 21 21 2	Depositor
Cell constants a, b, c, α , β , γ	100.93Å 148.91Å 57.05Å 90.00° 90.00° 90.00°	Depositor
Resolution (Å)	28.98 – 2.34 28.98 – 2.34	Depositor EDS
% Data completeness (in resolution range)	99.7 (28.98-2.34) 94.8 (28.98-2.34)	Depositor EDS
R_{merge}	0.06	Depositor
R_{sym}	(Not available)	Depositor
$\langle I/\sigma(I) \rangle$ ¹	1.35 (at 2.34Å)	Xtrriage
Refinement program	PHENIX (PHENIX.REFINE)	Depositor
R, R_{free}	0.185 , 0.229 0.188 , 0.231	Depositor DCC
R_{free} test set	1758 reflections (4.77%)	wwPDB-VP
Wilson B-factor (Å ²)	44.9	Xtrriage
Anisotropy	0.173	Xtrriage
Bulk solvent k_{sol} (e/Å ³), B_{sol} (Å ²)	0.29 , 35.5	EDS
L-test for twinning ²	$\langle L \rangle = 0.48$, $\langle L^2 \rangle = 0.31$	Xtrriage
Estimated twinning fraction	No twinning to report.	Xtrriage
F_o, F_c correlation	0.95	EDS
Total number of atoms	5864	wwPDB-VP
Average B, all atoms (Å ²)	52.0	wwPDB-VP

Xtrriage's analysis on translational NCS is as follows: *The largest off-origin peak in the Patterson function is 7.05% of the height of the origin peak. No significant pseudotranslation is detected.*

¹Intensities estimated from amplitudes.

²Theoretical values of $\langle |L| \rangle$, $\langle L^2 \rangle$ for acentric reflections are 0.5, 0.333 respectively for untwinned datasets, and 0.375, 0.2 for perfectly twinned datasets.

5 Model quality [i](#)

5.1 Standard geometry [i](#)

Bond lengths and bond angles in the following residue types are not validated in this section: DMS, ZN, NI, EDO, N81

The Z score for a bond length (or angle) is the number of standard deviations the observed value is removed from the expected value. A bond length (or angle) with $|Z| > 5$ is considered an outlier worth inspection. RMSZ is the root-mean-square of all Z scores of the bond lengths (or angles).

Mol	Chain	Bond lengths		Bond angles	
		RMSZ	# Z >5	RMSZ	# Z >5
1	A	0.43	0/2889	0.80	2/3929 (0.1%)
1	B	0.44	0/2893	0.56	0/3930
All	All	0.44	0/5782	0.69	2/7859 (0.0%)

Chiral center outliers are detected by calculating the chiral volume of a chiral center and verifying if the center is modelled as a planar moiety or with the opposite hand. A planarity outlier is detected by checking planarity of atoms in a peptide group, atoms in a mainchain group or atoms of a sidechain that are expected to be planar.

Mol	Chain	#Chirality outliers	#Planarity outliers
1	A	0	1

There are no bond length outliers.

All (2) bond angle outliers are listed below:

Mol	Chain	Res	Type	Atoms	Z	Observed($^{\circ}$)	Ideal($^{\circ}$)
1	A	322	ARG	NH1-CZ-NH2	-25.61	91.22	119.40
1	A	322	ARG	NE-CZ-NH2	-24.21	108.19	120.30

There are no chirality outliers.

All (1) planarity outliers are listed below:

Mol	Chain	Res	Type	Group
1	A	322	ARG	Sidechain

5.2 Too-close contacts [i](#)

In the following table, the Non-H and H(model) columns list the number of non-hydrogen atoms and hydrogen atoms in the chain respectively. The H(added) column lists the number of hydrogen

atoms added and optimized by MolProbity. The Clashes column lists the number of clashes within the asymmetric unit, whereas Symm-Clashes lists symmetry-related clashes.

Mol	Chain	Non-H	H(model)	H(added)	Clashes	Symm-Clashes
1	A	2796	0	2629	26	3
1	B	2806	0	2654	30	0
2	A	1	0	0	0	0
2	B	1	0	0	0	0
3	A	1	0	0	0	0
3	B	1	0	0	0	0
4	A	13	0	0	0	0
4	B	13	0	0	0	0
5	A	4	0	6	6	0
5	B	4	0	6	2	0
6	A	12	0	18	1	0
6	B	16	0	24	7	0
7	A	108	0	0	4	0
7	B	88	0	0	6	0
All	All	5864	0	5337	59	3

The all-atom clashscore is defined as the number of clashes found per 1000 atoms (including hydrogen atoms). The all-atom clashscore for this structure is 5.

All (59) close contacts within the same asymmetric unit are listed below, sorted by their clash magnitude.

Atom-1	Atom-2	Interatomic distance (Å)	Clash overlap (Å)
1:B:349:GLU:OE2	7:B:2087:HOH:O	2.06	0.73
1:B:69:ALA:HB3	6:B:1359:EDO:H12	1.71	0.73
5:A:1355:DMS:O	7:A:2068:HOH:O	2.09	0.71
1:B:66:VAL:O	7:B:2013:HOH:O	2.11	0.68
1:B:305:LEU:HD22	6:B:1358:EDO:H21	1.75	0.67
1:A:142:GLU:OE1	7:A:2037:HOH:O	2.12	0.67
1:A:227:PHE:HD1	5:A:1355:DMS:H13	1.59	0.66
1:B:60:ASP:O	7:B:2011:HOH:O	2.13	0.66
1:B:151:GLY:HA2	1:B:174:PRO:HG3	1.81	0.62
1:B:19:PRO:HB3	1:B:30:TYR:CZ	2.37	0.59
6:B:1357:EDO:H22	7:B:2073:HOH:O	2.04	0.58
1:A:19:PRO:HB3	1:A:30:TYR:CZ	2.40	0.56
1:B:295:ARG:HB2	1:B:347:THR:HA	1.88	0.55
1:A:19:PRO:HD2	1:A:48:VAL:O	2.08	0.54
1:A:227:PHE:HB3	5:A:1355:DMS:H12	1.90	0.53
1:B:141:TYR:CE2	1:B:149:ASN:HA	2.45	0.52
1:B:68:PRO:HD2	6:B:1359:EDO:H21	1.91	0.52

Continued on next page...

Continued from previous page...

Atom-1	Atom-2	Interatomic distance (Å)	Clash overlap (Å)
1:B:182:LYS:HG2	7:B:2041:HOH:O	2.10	0.52
1:B:82:PHE:HB2	1:B:244:LEU:HB2	1.92	0.52
1:A:295:ARG:HB2	1:A:347:THR:HA	1.93	0.50
1:B:75:VAL:HG11	1:B:125:LEU:HG	1.95	0.48
1:A:74:LEU:HD13	1:A:87:ILE:HD12	1.95	0.47
1:B:63:ASP:HB3	1:B:95:ARG:HB2	1.96	0.47
1:B:63:ASP:CG	1:B:98[A]:ARG:HH22	2.17	0.47
1:B:134:ALA:O	6:B:1359:EDO:H22	2.15	0.47
1:A:186:ALA:HA	1:A:244:LEU:HD23	1.97	0.46
1:B:218:ARG:HG2	1:B:255:ILE:HD13	1.97	0.46
1:A:50:PRO:HB2	1:A:52:GLU:HG3	1.97	0.46
1:A:144:HIS:HB2	7:A:2037:HOH:O	2.16	0.46
1:A:153:LEU:HD11	1:A:197:ILE:HG21	1.96	0.46
1:A:295:ARG:HD2	7:A:2089:HOH:O	2.16	0.45
1:A:82:PHE:HB2	1:A:244:LEU:HB2	1.99	0.45
1:A:199:TYR:HB2	1:A:267:PHE:CE1	2.52	0.45
1:A:218[A]:ARG:HD2	1:A:255:ILE:HD13	1.99	0.44
1:B:14:ILE:HD13	1:B:44:LEU:HD23	1.99	0.44
1:A:229:GLY:H	5:A:1355:DMS:H21	1.83	0.44
1:A:44:LEU:HD13	1:A:270:THR:HG22	1.99	0.44
1:A:222:LEU:HD11	1:A:226:PHE:CE2	2.53	0.44
1:B:153:LEU:HD11	1:B:197:ILE:HG21	2.00	0.44
1:A:105:LYS:HD3	1:A:106:TYR:CE2	2.53	0.44
1:A:199:TYR:CE2	1:A:201:HIS:HA	2.53	0.43
1:B:228:PRO:HD2	5:B:1355:DMS:H22	2.00	0.43
1:B:305:LEU:HB3	6:B:1358:EDO:H21	2.02	0.42
1:A:14:ILE:HG13	1:A:258:ASP:HB3	2.00	0.42
1:A:227:PHE:HD1	5:A:1355:DMS:C1	2.30	0.42
1:A:229:GLY:H	5:A:1355:DMS:C2	2.33	0.42
1:B:9:ASN:HD21	1:B:13:ARG:N	2.18	0.42
1:B:345:LEU:HA	1:B:346:PRO:HD3	1.93	0.41
1:B:227:PHE:HA	5:B:1355:DMS:H21	2.01	0.41
1:B:36:SER:HB3	1:B:350:ALA:HB1	2.01	0.41
1:B:61:ASP:N	1:B:61:ASP:OD1	2.54	0.41
1:B:140:LEU:HD23	1:B:140:LEU:HA	1.74	0.41
1:B:347:THR:OG1	1:B:349:GLU:OE1	2.24	0.41
1:A:150:ILE:HG23	1:A:289:THR:HG22	2.03	0.41
1:A:238:LEU:H	6:A:1356:EDO:H22	1.85	0.41
1:B:14:ILE:HG13	1:B:258:ASP:HB3	2.02	0.40
1:A:306:CYS:HB3	1:A:311:ASP:HB3	2.03	0.40
1:B:207:SER:O	1:B:278:GLY:HA3	2.21	0.40

Continued on next page...

Continued from previous page...

Atom-1	Atom-2	Interatomic distance (Å)	Clash overlap (Å)
6:B:1358:EDO:H22	7:B:2076:HOH:O	2.20	0.40

All (3) symmetry-related close contacts are listed below. The label for Atom-2 includes the symmetry operator and encoded unit-cell translations to be applied.

Atom-1	Atom-2	Interatomic distance (Å)	Clash overlap (Å)
1:A:322:ARG:CZ	1:A:322:ARG:NH2[2_455]	1.33	0.87
1:A:322:ARG:NH1	1:A:322:ARG:NH2[2_455]	1.91	0.29
1:A:322:ARG:NE	1:A:322:ARG:NH2[2_455]	2.16	0.04

5.3 Torsion angles [i](#)

5.3.1 Protein backbone [i](#)

In the following table, the Percentiles column shows the percent Ramachandran outliers of the chain as a percentile score with respect to all X-ray entries followed by that with respect to entries of similar resolution.

The Analysed column shows the number of residues for which the backbone conformation was analysed, and the total number of residues.

Mol	Chain	Analysed	Favoured	Allowed	Outliers	Percentiles	
1	A	350/381 (92%)	342 (98%)	8 (2%)	0	100	100
1	B	348/381 (91%)	340 (98%)	8 (2%)	0	100	100
All	All	698/762 (92%)	682 (98%)	16 (2%)	0	100	100

There are no Ramachandran outliers to report.

5.3.2 Protein sidechains [i](#)

In the following table, the Percentiles column shows the percent sidechain outliers of the chain as a percentile score with respect to all X-ray entries followed by that with respect to entries of similar resolution.

The Analysed column shows the number of residues for which the sidechain conformation was analysed, and the total number of residues.

Mol	Chain	Analysed	Rotameric	Outliers	Percentiles	
1	A	286/335 (85%)	283 (99%)	3 (1%)	76	85

Continued on next page...

Continued from previous page...

Mol	Chain	Analysed	Rotameric	Outliers	Percentiles	
1	B	287/335 (86%)	283 (99%)	4 (1%)	67	78
All	All	573/670 (86%)	566 (99%)	7 (1%)	73	82

All (7) residues with a non-rotameric sidechain are listed below:

Mol	Chain	Res	Type
1	A	61	ASP
1	A	132	TYR
1	A	175	TYR
1	B	11[A]	SER
1	B	11[B]	SER
1	B	74	LEU
1	B	312	MET

Sometimes sidechains can be flipped to improve hydrogen bonding and reduce clashes. All (1) such sidechains are listed below:

Mol	Chain	Res	Type
1	B	215	HIS

5.3.3 RNA [i](#)

There are no RNA molecules in this entry.

5.4 Non-standard residues in protein, DNA, RNA chains [i](#)

There are no non-standard protein/DNA/RNA residues in this entry.

5.5 Carbohydrates [i](#)

There are no monosaccharides in this entry.

5.6 Ligand geometry [i](#)

Of 15 ligands modelled in this entry, 4 are monoatomic - leaving 11 for Mogul analysis.

In the following table, the Counts columns list the number of bonds (or angles) for which Mogul statistics could be retrieved, the number of bonds (or angles) that are observed in the model and the number of bonds (or angles) that are defined in the Chemical Component Dictionary. The

Link column lists molecule types, if any, to which the group is linked. The Z score for a bond length (or angle) is the number of standard deviations the observed value is removed from the expected value. A bond length (or angle) with $|Z| > 2$ is considered an outlier worth inspection. RMSZ is the root-mean-square of all Z scores of the bond lengths (or angles).

Mol	Type	Chain	Res	Link	Bond lengths			Bond angles		
					Counts	RMSZ	# Z > 2	Counts	RMSZ	# Z > 2
6	EDO	A	1358	-	3,3,3	0.50	0	2,2,2	0.27	0
6	EDO	A	1357	-	3,3,3	0.50	0	2,2,2	0.27	0
6	EDO	B	1357	-	3,3,3	0.49	0	2,2,2	0.27	0
5	DMS	A	1355	-	3,3,3	0.37	0	3,3,3	0.66	0
4	N81	A	1354	2	12,12,12	1.20	0	13,16,16	1.56	2 (15%)
6	EDO	B	1359	-	3,3,3	0.50	0	2,2,2	0.49	0
6	EDO	B	1356	-	3,3,3	0.42	0	2,2,2	0.54	0
6	EDO	A	1356	-	3,3,3	0.68	0	2,2,2	0.35	0
4	N81	B	1354	2	12,12,12	1.43	2 (16%)	13,16,16	1.18	1 (7%)
5	DMS	B	1355	-	3,3,3	0.65	0	3,3,3	0.47	0
6	EDO	B	1358	-	3,3,3	0.44	0	2,2,2	0.28	0

In the following table, the Chirals column lists the number of chiral outliers, the number of chiral centers analysed, the number of these observed in the model and the number defined in the Chemical Component Dictionary. Similar counts are reported in the Torsion and Rings columns. '-' means no outliers of that kind were identified.

Mol	Type	Chain	Res	Link	Chirals	Torsions	Rings
6	EDO	A	1358	-	-	1/1/1/1	-
6	EDO	A	1357	-	-	0/1/1/1	-
6	EDO	B	1357	-	-	1/1/1/1	-
6	EDO	B	1359	-	-	1/1/1/1	-
4	N81	A	1354	2	-	8/16/16/16	-
6	EDO	B	1356	-	-	0/1/1/1	-
6	EDO	A	1356	-	-	1/1/1/1	-
4	N81	B	1354	2	1/1/5/5	11/16/16/16	-
6	EDO	B	1358	-	-	1/1/1/1	-

All (2) bond length outliers are listed below:

Mol	Chain	Res	Type	Atoms	Z	Observed(Å)	Ideal(Å)
4	B	1354	N81	C03-C02	-2.52	1.51	1.54
4	B	1354	N81	O10-C08	2.00	1.28	1.22

All (3) bond angle outliers are listed below:

Mol	Chain	Res	Type	Atoms	Z	Observed(°)	Ideal(°)
4	A	1354	N81	O01-C02-C03	-2.86	103.62	110.58
4	A	1354	N81	O12-C11-O13	-2.64	118.08	124.09
4	B	1354	N81	O12-C11-C02	2.57	120.22	113.27

All (1) chirality outliers are listed below:

Mol	Chain	Res	Type	Atom
4	B	1354	N81	C02

All (24) torsion outliers are listed below:

Mol	Chain	Res	Type	Atoms
4	A	1354	N81	O01-C02-C03-C04
4	A	1354	N81	O01-C02-C03-C08
4	A	1354	N81	C11-C02-C03-C04
4	A	1354	N81	C11-C02-C03-C08
4	B	1354	N81	O01-C02-C03-C04
4	B	1354	N81	C11-C02-C03-C04
4	A	1354	N81	O01-C02-C11-O12
4	A	1354	N81	O01-C02-C11-O13
6	B	1359	EDO	O1-C1-C2-O2
4	A	1354	N81	C03-C02-C11-O13
4	B	1354	N81	C03-C02-C11-O13
4	A	1354	N81	C03-C02-C11-O12
4	B	1354	N81	C03-C02-C11-O12
4	B	1354	N81	O01-C02-C11-O13
6	A	1356	EDO	O1-C1-C2-O2
6	A	1358	EDO	O1-C1-C2-O2
4	B	1354	N81	O01-C02-C11-O12
4	B	1354	N81	C11-C02-C03-C08
4	B	1354	N81	C03-C04-C05-O06
4	B	1354	N81	C03-C04-C05-O07
4	B	1354	N81	O01-C02-C03-C08
6	B	1357	EDO	O1-C1-C2-O2
6	B	1358	EDO	O1-C1-C2-O2
4	B	1354	N81	C04-C03-C08-O09

There are no ring outliers.

6 monomers are involved in 16 short contacts:

Mol	Chain	Res	Type	Clashes	Symm-Clashes
6	B	1357	EDO	1	0

Continued on next page...

Continued from previous page...

Mol	Chain	Res	Type	Clashes	Symm-Clashes
5	A	1355	DMS	6	0
6	B	1359	EDO	3	0
6	A	1356	EDO	1	0
5	B	1355	DMS	2	0
6	B	1358	EDO	3	0

5.7 Other polymers [i](#)

There are no such residues in this entry.

5.8 Polymer linkage issues [i](#)

There are no chain breaks in this entry.

6 Fit of model and data

6.1 Protein, DNA and RNA chains

In the following table, the column labelled ‘#RSRZ > 2’ contains the number (and percentage) of RSRZ outliers, followed by percent RSRZ outliers for the chain as percentile scores relative to all X-ray entries and entries of similar resolution. The OWAB column contains the minimum, median, 95th percentile and maximum values of the occupancy-weighted average B-factor per residue. The column labelled ‘Q < 0.9’ lists the number of (and percentage) of residues with an average occupancy less than 0.9.

Mol	Chain	Analysed	<RSRZ>	#RSRZ>2	OWAB(Å ²)	Q<0.9
1	A	350/381 (91%)	0.30	28 (8%) 12 18	32, 50, 76, 102	0
1	B	347/381 (91%)	0.44	38 (10%) 5 9	32, 50, 79, 98	0
All	All	697/762 (91%)	0.37	66 (9%) 8 13	32, 50, 78, 102	0

All (66) RSRZ outliers are listed below:

Mol	Chain	Res	Type	RSRZ
1	A	7	THR	7.6
1	B	311	ASP	6.6
1	B	7	THR	6.0
1	B	351	ALA	5.6
1	B	166	ILE	5.5
1	A	353	PHE	5.1
1	B	10	PRO	4.7
1	A	8	LEU	4.5
1	B	162	LYS	4.5
1	B	353	PHE	4.2
1	B	269	ILE	4.2
1	A	270	THR	4.2
1	A	351	ALA	4.1
1	A	5	SER	4.1
1	B	310	LYS	3.8
1	A	6	GLU	3.8
1	B	8	LEU	3.6
1	B	9	ASN	3.5
1	A	269	ILE	3.5
1	A	338	ASN	3.5
1	B	163	GLU	3.5
1	B	270	THR	3.4
1	A	196	SER	3.3
1	B	195	TYR	3.3

Continued on next page...

Continued from previous page...

Mol	Chain	Res	Type	RSRZ
1	A	195	TYR	3.3
1	A	111	TYR	3.2
1	A	197	ILE	3.2
1	B	340	VAL	3.1
1	A	291	PHE	3.0
1	B	352	GLU	2.9
1	B	338	ASN	2.9
1	B	44	LEU	2.8
1	B	112	SER	2.8
1	B	111	TYR	2.8
1	A	112	SER	2.8
1	B	45	ALA	2.7
1	B	164	SER	2.7
1	B	291	PHE	2.7
1	A	144	HIS	2.6
1	A	271	PHE	2.6
1	B	196	SER	2.5
1	B	194	LEU	2.5
1	B	271	PHE	2.5
1	A	198	ASN	2.5
1	B	350	ALA	2.5
1	A	288	SER	2.5
1	A	104	ASP	2.5
1	B	208	TRP	2.5
1	A	45	ALA	2.4
1	A	194	LEU	2.4
1	B	197	ILE	2.4
1	B	345	LEU	2.3
1	B	144	HIS	2.3
1	B	169	GLU	2.3
1	B	272	PRO	2.3
1	B	52	GLU	2.3
1	A	208	TRP	2.2
1	A	44	LEU	2.2
1	A	52	GLU	2.2
1	A	352	GLU	2.1
1	B	268	MET	2.1
1	B	276	HIS	2.1
1	A	335	GLY	2.1
1	A	289	THR	2.1
1	B	277	ALA	2.0
1	B	309	ARG	2.0

6.2 Non-standard residues in protein, DNA, RNA chains [i](#)

There are no non-standard protein/DNA/RNA residues in this entry.

6.3 Carbohydrates [i](#)

There are no monosaccharides in this entry.

6.4 Ligands [i](#)

In the following table, the Atoms column lists the number of modelled atoms in the group and the number defined in the chemical component dictionary. The B-factors column lists the minimum, median, 95th percentile and maximum values of B factors of atoms in the group. The column labelled 'Q< 0.9' lists the number of atoms with occupancy less than 0.9.

Mol	Type	Chain	Res	Atoms	RSCC	RSR	B-factors(\AA^2)	Q<0.9
6	EDO	A	1356	4/4	0.88	0.16	40,44,50,51	0
4	N81	B	1354	13/13	0.89	0.20	40,50,63,64	0
6	EDO	A	1357	4/4	0.89	0.36	61,69,71,74	0
6	EDO	A	1358	4/4	0.89	0.26	42,47,49,64	0
6	EDO	B	1356	4/4	0.89	0.26	43,43,56,59	0
6	EDO	B	1357	4/4	0.89	0.26	56,58,63,72	0
6	EDO	B	1359	4/4	0.90	0.43	47,49,51,65	0
6	EDO	B	1358	4/4	0.91	0.40	51,53,56,57	0
4	N81	A	1354	13/13	0.91	0.22	47,59,66,69	0
5	DMS	A	1355	4/4	0.94	0.19	54,63,70,73	0
5	DMS	B	1355	4/4	0.95	0.10	53,61,63,74	0
3	ZN	A	502	1/1	0.99	0.04	40,40,40,40	0
2	NI	A	501	1/1	0.99	0.10	56,56,56,56	0
2	NI	B	501	1/1	0.99	0.12	57,57,57,57	0
3	ZN	B	502	1/1	1.00	0.05	45,45,45,45	0

6.5 Other polymers [i](#)

There are no such residues in this entry.