



Full wwPDB EM Validation Report ⓘ

Nov 10, 2024 – 03:10 am GMT

PDB ID : 5FWP
EMDB ID : EMD-3340
Title : Atomic cryoEM structure of Hsp90-Cdc37-Cdk4 complex
Authors : Verba, K.A.; Wang, R.Y.R.; Arakawa, A.; Liu, Y.; Yokoyama, S.; Agard, D.A.
Deposited on : 2016-02-18
Resolution : 7.20 Å (reported)
Based on initial model : ?

This is a Full wwPDB EM Validation Report for a publicly released PDB entry.

We welcome your comments at validation@mail.wwpdb.org

A user guide is available at

<https://www.wwpdb.org/validation/2017/EMValidationReportHelp>

with specific help available everywhere you see the ⓘ symbol.

The types of validation reports are described at

<http://www.wwpdb.org/validation/2017/FAQs#types>.

The following versions of software and data (see [references ⓘ](#)) were used in the production of this report:

EMDB validation analysis : 0.0.1.dev113
Mogul : 1.8.4, CSD as541be (2020)
MolProbity : 4.02b-467
buster-report : 1.1.7 (2018)
Percentile statistics : 20231227.v01 (using entries in the PDB archive December 27th 2023)
MapQ : 1.9.13
Ideal geometry (proteins) : Engh & Huber (2001)
Ideal geometry (DNA, RNA) : Parkinson et al. (1996)
Validation Pipeline (wwPDB-VP) : 2.39

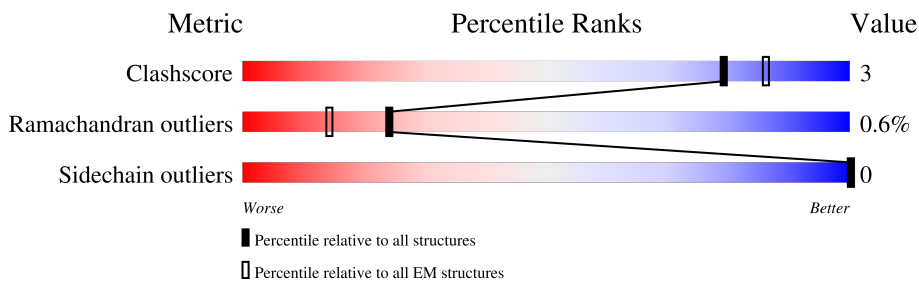
1 Overall quality at a glance

The following experimental techniques were used to determine the structure:

ELECTRON MICROSCOPY

The reported resolution of this entry is 7.20 Å.

Percentile scores (ranging between 0-100) for global validation metrics of the entry are shown in the following graphic. The table shows the number of entries on which the scores are based.



Metric	Whole archive (#Entries)	EM structures (#Entries)
Clashscore	210492	15764
Ramachandran outliers	207382	16835
Sidechain outliers	206894	16415

The table below summarises the geometric issues observed across the polymeric chains and their fit to the map. The red, orange, yellow and green segments of the bar indicate the fraction of residues that contain outliers for ≥ 3 , 2, 1 and 0 types of geometric quality criteria respectively. A grey segment represents the fraction of residues that are not modelled. The numeric value for each fraction is indicated below the corresponding segment, with a dot representing fractions $\leq 5\%$. The upper red bar (where present) indicates the fraction of residues that have poor fit to the EM map (all-atom inclusion $< 40\%$). The numeric value is given above the bar.

Mol	Chain	Length	Quality of chain
1	A	727	
1	B	727	
2	E	378	
3	K	310	

2 Entry composition

There are 5 unique types of molecules in this entry. The entry contains 28355 atoms, of which 14168 are hydrogens and 0 are deuteriums.

In the tables below, the AltConf column contains the number of residues with at least one atom in alternate conformation and the Trace column contains the number of residues modelled with at most 2 atoms.

- Molecule 1 is a protein called HEAT SHOCK PROTEIN HSP 90 BETA.

Mol	Chain	Residues	Atoms							AltConf	Trace
			Total	C	H	N	O	S			
1	A	638	Total	C	H	N	O	S	0	0	
			10399	3280	5226	870	1000	23			
1	B	630	Total	C	H	N	O	S	0	0	
			10242	3235	5139	856	989	23			

There are 6 discrepancies between the modelled and reference sequences:

Chain	Residue	Modelled	Actual	Comment	Reference
A	-2	GLY	-	expression tag	UNP P08238
A	-1	GLY	-	expression tag	UNP P08238
A	0	PHE	-	expression tag	UNP P08238
B	-2	GLY	-	expression tag	UNP P08238
B	-1	GLY	-	expression tag	UNP P08238
B	0	PHE	-	expression tag	UNP P08238

- Molecule 2 is a protein called HSP90 CO-CHAPERONE CDC37.

Mol	Chain	Residues	Atoms							AltConf	Trace
			Total	C	H	N	O	P	S		
2	E	259	Total	C	H	N	O	P	S	0	0
			4307	1358	2125	383	425	1	15		

- Molecule 3 is a protein called CYCLIN-DEPENDENT KINASE 4.

Mol	Chain	Residues	Atoms						AltConf	Trace
			Total	C	H	N	O	S		
3	K	209	Total	C	H	N	O	S	0	0
			3343	1077	1678	284	295	9		

There are 7 discrepancies between the modelled and reference sequences:

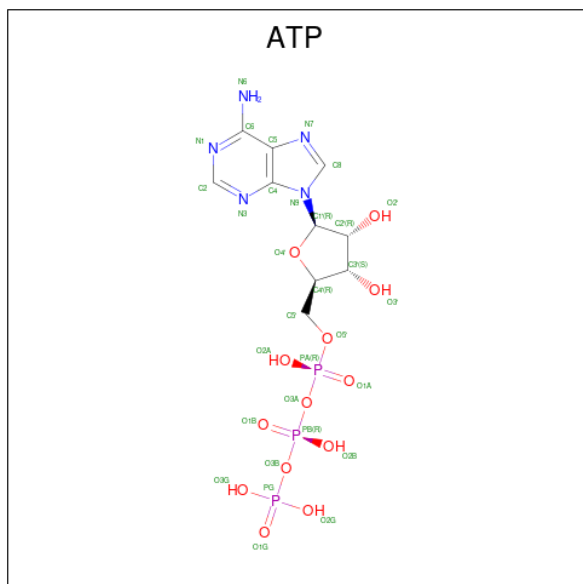
Chain	Residue	Modelled	Actual	Comment	Reference
K	-6	GLY	-	expression tag	UNP P11802
K	-5	ALA	-	expression tag	UNP P11802
K	-4	MET	-	expression tag	UNP P11802

Continued on next page...

Continued from previous page...

Chain	Residue	Modelled	Actual	Comment	Reference
K	-3	ASP	-	expression tag	UNP P11802
K	-2	PRO	-	expression tag	UNP P11802
K	-1	GLU	-	expression tag	UNP P11802
K	0	PHE	-	expression tag	UNP P11802

- Molecule 4 is ADENOSINE-5'-TRIPHOSPHATE (three-letter code: ATP) (formula: $C_{10}H_{16}N_5O_{13}P_3$).



Mol	Chain	Residues	Atoms				AltConf	
			Total	C	N	O		P
4	A	1	Total	C	N	O	P	0
			31	10	5	13	3	
4	B	1	Total	C	N	O	P	0
			31	10	5	13	3	


- Molecule 5 is MAGNESIUM ION (three-letter code: MG) (formula: Mg).

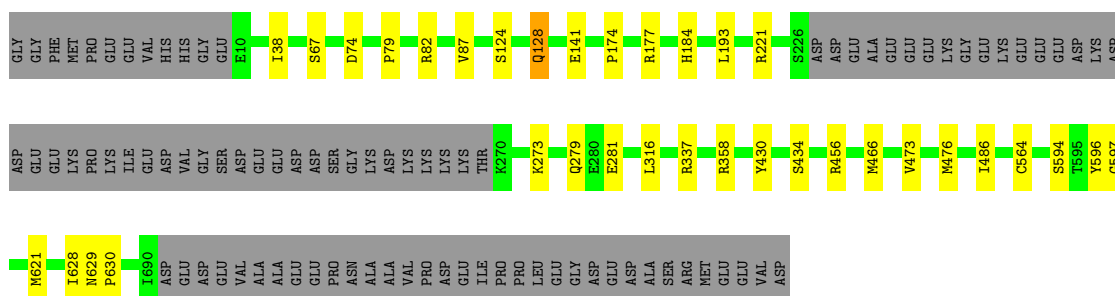
Mol	Chain	Residues	Atoms		AltConf
5	A	1	Total	Mg	0
			1	1	
5	B	1	Total	Mg	0
			1	1	

3 Residue-property plots [i](#)


These plots are drawn for all protein, RNA, DNA and oligosaccharide chains in the entry. The first graphic for a chain summarises the proportions of the various outlier classes displayed in the second graphic. The second graphic shows the sequence view annotated by issues in geometry and atom inclusion in map density. Residues are color-coded according to the number of geometric quality criteria for which they contain at least one outlier: green = 0, yellow = 1, orange = 2 and red = 3 or more. A red diamond above a residue indicates a poor fit to the EM map for this residue (all-atom inclusion < 40%). Stretches of 2 or more consecutive residues without any outlier are shown as a green connector. Residues present in the sample, but not in the model, are shown in grey.

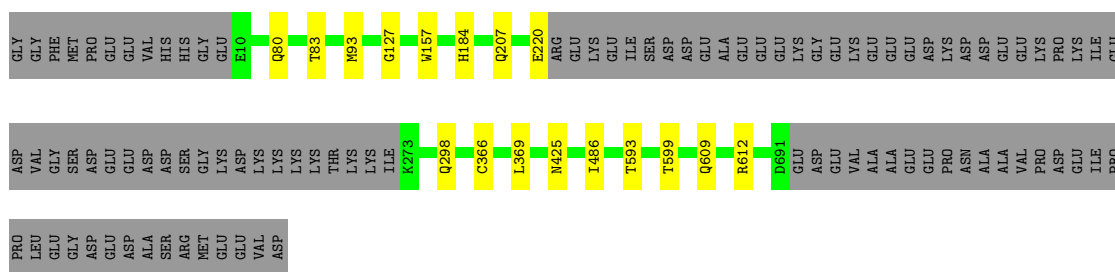
- Molecule 1: HEAT SHOCK PROTEIN HSP 90 BETA

Chain A:  83% 5% 12%



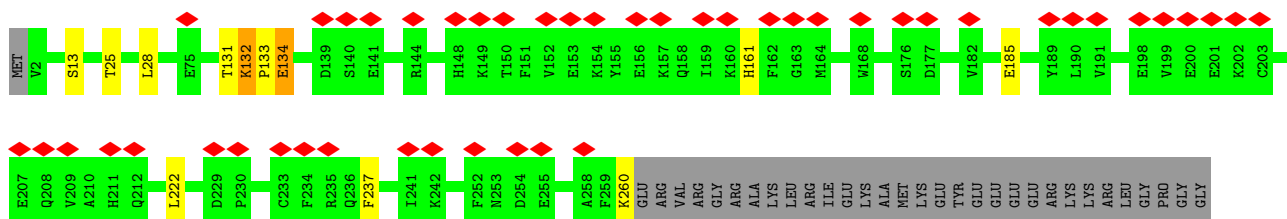
- Molecule 1: HEAT SHOCK PROTEIN HSP 90 BETA

Chain B:  84% 13%



- Molecule 2: HSP90 CO-CHAPERONE CDC37

Chain E:  12% 65% 31%



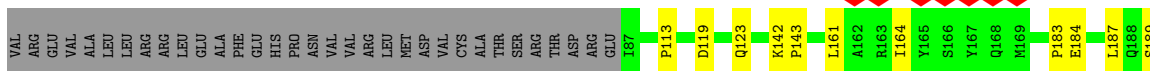
LEU ASP
GLU PRO VAL
GLU VAL
GLU TYR
GLY SER
PRO PRO
GLU LEU
LEU LEU
GLN VAL
LYS CYS
PHE ASP
GLY VAL
LYS ASP
GLU VAL
GLN ASP
MET LEU
LEU GLN
ASP ASP
ALA ILE
LYS SER
LYS MET
ASP PRO
THR ASP
ALA ASP
LYS TYR
HIS MET
GLN ARG
CYS ILE
ASP ASP
SER GLY
LEU TRP

LYS
GLU
GLY
GLU
ALA
GLY
PRO
ASP
ASP
LEU
LEU
GLU
ALA
VAL
PRO
LYS
THR
THR
GLY
ASP
GLU
LYS
ASP
VAL
SER
VAL

● Molecule 3: CYCLIN-DEPENDENT KINASE 4



GLY
ALA
MET
PRO
GLU
PHE
MET
ALA
THR
SER
GLU
ARG
TVR
GLU
PRO
VAL
VAL
ALA
GLU
ILE
GLY
VAL
GLY
ALA
TVR
GLY
THR
VAL
TYR
LYS
ALA
ARG
ASP
PRO
HIS
SER
GLY
HIS
PHE
VAL
ALA
LEU
LYS
SER
VAL
ARG
VAL
VAL
PRO
ASN
GLY
GLY
GLY
GLY
LEU
LEU
PRO
ILE
SER
THR



4 Experimental information

Property	Value	Source
EM reconstruction method	SINGLE PARTICLE	Depositor
Imposed symmetry	POINT, C1	Depositor
Number of particles used	114683	Depositor
Resolution determination method	Not provided	
CTF correction method	Not provided	
Microscope	FEI TITAN KRIOS	Depositor
Voltage (kV)	300	Depositor
Electron dose ($e^-/\text{\AA}^2$)	44	Depositor
Minimum defocus (nm)	1400	Depositor
Maximum defocus (nm)	3800	Depositor
Magnification	22500	Depositor
Image detector	GATAN K2 SUMMIT (4k x 4k)	Depositor
Maximum map value	0.035	Depositor
Minimum map value	-0.007	Depositor
Average map value	0.000	Depositor
Map value standard deviation	0.001	Depositor
Recommended contour level	0.0068	Depositor
Map size (\AA)	336.64, 336.64, 336.64	wwPDB
Map dimensions	256, 256, 256	wwPDB
Map angles ($^\circ$)	90.0, 90.0, 90.0	wwPDB
Pixel spacing (\AA)	1.315, 1.315, 1.315	Depositor

5 Model quality [i](#)

5.1 Standard geometry [i](#)

Bond lengths and bond angles in the following residue types are not validated in this section: SEP, ATP, MG

The Z score for a bond length (or angle) is the number of standard deviations the observed value is removed from the expected value. A bond length (or angle) with $|Z| > 5$ is considered an outlier worth inspection. RMSZ is the root-mean-square of all Z scores of the bond lengths (or angles).

Mol	Chain	Bond lengths		Bond angles	
		RMSZ	# Z >5	RMSZ	# Z >5
1	A	0.92	0/5257	0.56	0/7062
1	B	0.91	0/5187	0.56	0/6972
2	E	0.98	1/2209 (0.0%)	0.50	0/2955
3	K	0.81	1/1711 (0.1%)	0.60	0/2330
All	All	0.92	2/14364 (0.0%)	0.55	0/19319

All (2) bond length outliers are listed below:

Mol	Chain	Res	Type	Atoms	Z	Observed(Å)	Ideal(Å)
2	E	134	GLU	CD-OE2	-5.07	1.20	1.25
3	K	184	GLU	CD-OE2	-5.06	1.20	1.25

There are no bond angle outliers.

There are no chirality outliers.

There are no planarity outliers.

5.2 Too-close contacts [i](#)

In the following table, the Non-H and H(model) columns list the number of non-hydrogen atoms and hydrogen atoms in the chain respectively. The H(added) column lists the number of hydrogen atoms added and optimized by MolProbity. The Clashes column lists the number of clashes within the asymmetric unit, whereas Symm-Clashes lists symmetry-related clashes.

Mol	Chain	Non-H	H(model)	H(added)	Clashes	Symm-Clashes
1	A	5173	5226	5224	20	0
1	B	5103	5139	5137	22	0
2	E	2182	2125	2124	13	0
3	K	1665	1678	1677	14	0
4	A	31	0	12	3	0

Continued on next page...

Continued from previous page...

Mol	Chain	Non-H	H(model)	H(added)	Clashes	Symm-Clashes
4	B	31	0	12	2	0
5	A	1	0	0	0	0
5	B	1	0	0	0	0
All	All	14187	14168	14186	72	0

The all-atom clashscore is defined as the number of clashes found per 1000 atoms (including hydrogen atoms). The all-atom clashscore for this structure is 3.

All (72) close contacts within the same asymmetric unit are listed below, sorted by their clash magnitude.

Atom-1	Atom-2	Interatomic distance (Å)	Clash overlap (Å)
1:B:609:GLN:HB3	1:B:612:ARG:CG	1.78	1.14
1:B:609:GLN:HB3	1:B:612:ARG:HG2	1.47	0.94
1:B:609:GLN:CG	1:B:612:ARG:HG2	1.96	0.94
1:B:609:GLN:CB	1:B:612:ARG:HG2	1.99	0.92
1:B:609:GLN:HB3	1:B:612:ARG:HG3	1.51	0.89
1:B:609:GLN:CB	1:B:612:ARG:CG	2.58	0.80
4:A:1691:ATP:O2G	4:A:1691:ATP:O2A	2.00	0.79
2:E:132:LYS:HB3	2:E:133:PRO:HA	1.70	0.72
4:B:1692:ATP:O2G	4:B:1692:ATP:O2B	2.03	0.72
1:B:80:GLN:N	1:B:80:GLN:OE1	2.33	0.61
1:B:609:GLN:HG3	1:B:612:ARG:HG2	1.81	0.61
1:A:279:GLN:O	1:A:279:GLN:HG3	2.02	0.60
1:B:298:GLN:O	1:B:298:GLN:NE2	2.35	0.59
2:E:132:LYS:HB3	2:E:133:PRO:CA	2.33	0.57
1:A:221:ARG:HB2	1:A:273:LYS:HB2	1.86	0.57
2:E:131:THR:O	2:E:132:LYS:HB2	2.04	0.56
1:B:425:ASN:ND2	2:E:131:THR:OG1	2.39	0.56
1:B:609:GLN:HG2	1:B:612:ARG:CD	2.36	0.56
1:B:609:GLN:CG	1:B:612:ARG:CG	2.78	0.55
1:B:93:MET:SD	4:B:1692:ATP:H1'	2.48	0.54
2:E:132:LYS:CB	2:E:133:PRO:HA	2.38	0.53
1:A:124:SER:OG	1:A:358:ARG:NH1	2.42	0.53
3:K:189:SER:OG	3:K:190:THR:N	2.42	0.52
1:A:128:GLN:O	1:A:128:GLN:CD	2.48	0.52
1:A:128:GLN:O	1:A:128:GLN:OE1	2.27	0.52
4:A:1691:ATP:N3	4:A:1691:ATP:H2'	2.24	0.51
1:A:486:ILE:O	1:A:486:ILE:HG23	2.10	0.51
3:K:206:GLU:O	3:K:210:ARG:N	2.44	0.50
4:A:1691:ATP:O1G	4:A:1691:ATP:O3A	2.30	0.50
2:E:131:THR:O	2:E:132:LYS:CB	2.59	0.49

Continued on next page...

Continued from previous page...

Atom-1	Atom-2	Interatomic distance (Å)	Clash overlap (Å)
1:B:157:TRP:O	1:B:157:TRP:HE3	1.96	0.49
1:B:609:GLN:HG2	1:B:612:ARG:HD3	1.94	0.49
2:E:260:LYS:HG2	2:E:260:LYS:O	2.13	0.48
2:E:222:LEU:HB2	2:E:237:PHE:CE2	2.48	0.48
1:A:38:ILE:HD12	1:A:38:ILE:C	2.34	0.48
2:E:161:HIS:O	2:E:161:HIS:HD2	1.97	0.48
3:K:142:LYS:HB2	3:K:143:PRO:CD	2.43	0.48
3:K:255:ARG:O	3:K:256:PRO:C	2.53	0.48
3:K:142:LYS:HB2	3:K:143:PRO:HD2	1.96	0.47
1:A:473:VAL:HA	1:A:476:MET:SD	2.54	0.47
1:B:366:CYS:HA	1:B:369:LEU:HB3	1.98	0.46
2:E:185:GLU:OE1	2:E:185:GLU:N	2.38	0.46
3:K:161:LEU:HA	3:K:164:ILE:HG12	1.98	0.46
1:A:141:GLU:N	1:A:184:HIS:O	2.48	0.46
1:B:220:GLU:HG2	1:B:220:GLU:O	2.17	0.45
1:A:594:SER:OG	1:A:596:TYR:O	2.34	0.45
3:K:244:LEU:HB3	3:K:245:PRO:HD2	1.98	0.45
1:A:79:PRO:HA	1:A:193:LEU:HD13	1.97	0.45
1:A:597:GLY:HA2	1:A:621:MET:SD	2.57	0.45
1:A:430:TYR:O	1:A:434:SER:N	2.50	0.45
1:A:456:ARG:HB3	1:A:466:MET:HG2	1.99	0.45
3:K:183:PRO:O	3:K:187:LEU:N	2.49	0.45
3:K:210:ARG:HG2	3:K:210:ARG:O	2.17	0.45
2:E:25:THR:HA	2:E:28:LEU:HB3	1.99	0.44
3:K:223:LEU:HB3	3:K:227:PHE:CE2	2.53	0.44
1:A:67:SER:OG	1:A:177:ARG:NH2	2.50	0.44
1:B:207:GLN:OE1	1:B:207:GLN:N	2.33	0.44
3:K:183:PRO:O	3:K:187:LEU:HG	2.18	0.43
2:E:161:HIS:CD2	2:E:161:HIS:C	2.91	0.43
3:K:187:LEU:HD22	3:K:242:VAL:HG13	2.00	0.43
1:B:486:ILE:HG23	1:B:486:ILE:O	2.18	0.43
1:B:593:THR:HG21	1:B:599:THR:HA	2.00	0.43
1:B:157:TRP:O	1:B:157:TRP:CE3	2.72	0.42
2:E:133:PRO:O	2:E:134:GLU:HB2	2.20	0.42
1:A:316:LEU:HB2	1:A:337:ARG:HA	2.02	0.41
1:A:82:ARG:HG2	1:A:82:ARG:O	2.19	0.41
1:A:629:ASN:HA	1:A:630:PRO:HD2	1.87	0.41
3:K:198:TRP:CH2	3:K:202:CYS:SG	3.10	0.41
1:B:83:THR:HG22	1:B:184:HIS:HA	2.03	0.41
1:A:564:CYS:SG	1:A:628:ILE:HD12	2.62	0.40
3:K:119:ASP:O	3:K:123:GLN:HG2	2.21	0.40

Continued on next page...

Continued from previous page...

Atom-1	Atom-2	Interatomic distance (Å)	Clash overlap (Å)
1:A:74:ASP:HB2	1:A:87:VAL:HB	2.02	0.40

There are no symmetry-related clashes.

5.3 Torsion angles [i](#)

5.3.1 Protein backbone [i](#)

In the following table, the Percentiles column shows the percent Ramachandran outliers of the chain as a percentile score with respect to all PDB entries followed by that with respect to all EM entries.

The Analysed column shows the number of residues for which the backbone conformation was analysed, and the total number of residues.

Mol	Chain	Analysed	Favoured	Allowed	Outliers	Percentiles	
1	A	634/727 (87%)	607 (96%)	24 (4%)	3 (0%)	25	64
1	B	626/727 (86%)	612 (98%)	13 (2%)	1 (0%)	44	78
2	E	256/378 (68%)	242 (94%)	13 (5%)	1 (0%)	30	68
3	K	207/310 (67%)	185 (89%)	17 (8%)	5 (2%)	5	27
All	All	1723/2142 (80%)	1646 (96%)	67 (4%)	10 (1%)	24	60

All (10) Ramachandran outliers are listed below:

Mol	Chain	Res	Type
2	E	132	LYS
3	K	256	PRO
1	A	174	PRO
1	A	281	GLU
3	K	113	PRO
3	K	212	PRO
3	K	233	PRO
1	A	128	GLN
3	K	245	PRO
1	B	127	GLY

5.3.2 Protein sidechains [i](#)

In the following table, the Percentiles column shows the percent sidechain outliers of the chain as a percentile score with respect to all PDB entries followed by that with respect to all EM entries.

The Analysed column shows the number of residues for which the sidechain conformation was analysed, and the total number of residues.

Mol	Chain	Analysed	Rotameric	Outliers	Percentiles	
1	A	577/653 (88%)	577 (100%)	0	100	100
1	B	569/653 (87%)	569 (100%)	0	100	100
2	E	238/340 (70%)	238 (100%)	0	100	100
3	K	183/262 (70%)	183 (100%)	0	100	100
All	All	1567/1908 (82%)	1567 (100%)	0	100	100

There are no protein residues with a non-rotameric sidechain to report.

Sometimes sidechains can be flipped to improve hydrogen bonding and reduce clashes. All (3) such sidechains are listed below:

Mol	Chain	Res	Type
1	B	425	ASN
2	E	161	HIS
3	K	98	GLN

5.3.3 RNA [i](#)

There are no RNA molecules in this entry.

5.4 Non-standard residues in protein, DNA, RNA chains [i](#)

1 non-standard protein/DNA/RNA residue is modelled in this entry.

In the following table, the Counts columns list the number of bonds (or angles) for which Mogul statistics could be retrieved, the number of bonds (or angles) that are observed in the model and the number of bonds (or angles) that are defined in the Chemical Component Dictionary. The Link column lists molecule types, if any, to which the group is linked. The Z score for a bond length (or angle) is the number of standard deviations the observed value is removed from the expected value. A bond length (or angle) with $|Z| > 2$ is considered an outlier worth inspection. RMSZ is the root-mean-square of all Z scores of the bond lengths (or angles).

Mol	Type	Chain	Res	Link	Bond lengths			Bond angles		
					Counts	RMSZ	# Z > 2	Counts	RMSZ	# Z > 2
2	SEP	E	13	2	8,9,10	1.41	1 (12%)	8,12,14	1.20	1 (12%)

In the following table, the Chirals column lists the number of chiral outliers, the number of chiral centers analysed, the number of these observed in the model and the number defined in the Chemical Component Dictionary. Similar counts are reported in the Torsion and Rings columns. '-' means no outliers of that kind were identified.

Mol	Type	Chain	Res	Link	Chirals	Torsions	Rings
2	SEP	E	13	2	-	0/5/8/10	-

All (1) bond length outliers are listed below:

Mol	Chain	Res	Type	Atoms	Z	Observed(Å)	Ideal(Å)
2	E	13	SEP	P-O1P	3.18	1.60	1.50

All (1) bond angle outliers are listed below:

Mol	Chain	Res	Type	Atoms	Z	Observed(°)	Ideal(°)
2	E	13	SEP	OG-CB-CA	2.88	110.95	108.14

There are no chirality outliers.

There are no torsion outliers.

There are no ring outliers.

No monomer is involved in short contacts.

5.5 Carbohydrates [i](#)

There are no oligosaccharides in this entry.

5.6 Ligand geometry [i](#)

Of 4 ligands modelled in this entry, 2 are monoatomic - leaving 2 for Mogul analysis.

In the following table, the Counts columns list the number of bonds (or angles) for which Mogul statistics could be retrieved, the number of bonds (or angles) that are observed in the model and the number of bonds (or angles) that are defined in the Chemical Component Dictionary. The Link column lists molecule types, if any, to which the group is linked. The Z score for a bond length (or angle) is the number of standard deviations the observed value is removed from the expected value. A bond length (or angle) with $|Z| > 2$ is considered an outlier worth inspection. RMSZ is the root-mean-square of all Z scores of the bond lengths (or angles).

Mol	Type	Chain	Res	Link	Bond lengths			Bond angles		
					Counts	RMSZ	# Z > 2	Counts	RMSZ	# Z > 2
4	ATP	A	1691	5	26,33,33	1.11	3 (11%)	31,52,52	1.95	6 (19%)
4	ATP	B	1692	5	26,33,33	1.03	2 (7%)	31,52,52	2.03	6 (19%)

In the following table, the Chirals column lists the number of chiral outliers, the number of chiral centers analysed, the number of these observed in the model and the number defined in the Chemical Component Dictionary. Similar counts are reported in the Torsion and Rings columns. '-' means no outliers of that kind were identified.

Mol	Type	Chain	Res	Link	Chirals	Torsions	Rings
4	ATP	A	1691	5	-	6/18/38/38	0/3/3/3
4	ATP	B	1692	5	-	7/18/38/38	0/3/3/3

All (5) bond length outliers are listed below:

Mol	Chain	Res	Type	Atoms	Z	Observed(Å)	Ideal(Å)
4	B	1692	ATP	C5-C4	2.59	1.47	1.40
4	A	1691	ATP	C5-C4	2.49	1.47	1.40
4	A	1691	ATP	O4'-C1'	2.29	1.44	1.41
4	B	1692	ATP	C2'-C1'	-2.20	1.50	1.53
4	A	1691	ATP	C2'-C1'	-2.04	1.50	1.53

All (12) bond angle outliers are listed below:

Mol	Chain	Res	Type	Atoms	Z	Observed(°)	Ideal(°)
4	A	1691	ATP	PB-O3B-PG	-6.06	112.03	132.83
4	B	1692	ATP	PA-O3A-PB	-6.03	112.15	132.83
4	B	1692	ATP	PB-O3B-PG	-5.37	114.39	132.83
4	A	1691	ATP	PA-O3A-PB	-5.29	114.67	132.83
4	B	1692	ATP	C3'-C2'-C1'	3.33	106.00	100.98
4	A	1691	ATP	N3-C2-N1	-3.27	123.56	128.68
4	B	1692	ATP	N3-C2-N1	-3.26	123.58	128.68
4	B	1692	ATP	C4-C5-N7	-2.36	106.94	109.40
4	A	1691	ATP	C3'-C2'-C1'	2.34	104.50	100.98
4	B	1692	ATP	O4'-C1'-C2'	-2.27	103.61	106.93
4	A	1691	ATP	C4-C5-N7	-2.24	107.06	109.40
4	A	1691	ATP	O2B-PB-O1B	2.09	122.58	112.24

There are no chirality outliers.

All (13) torsion outliers are listed below:

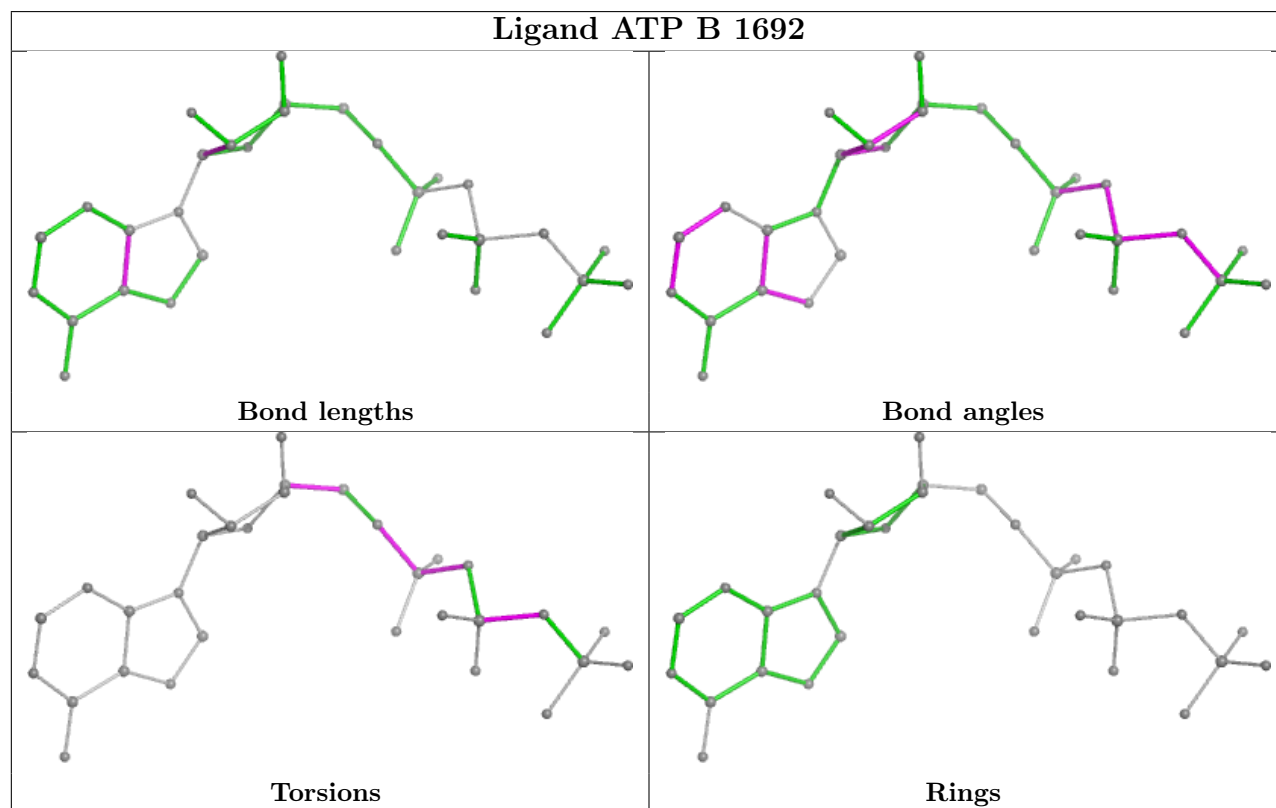
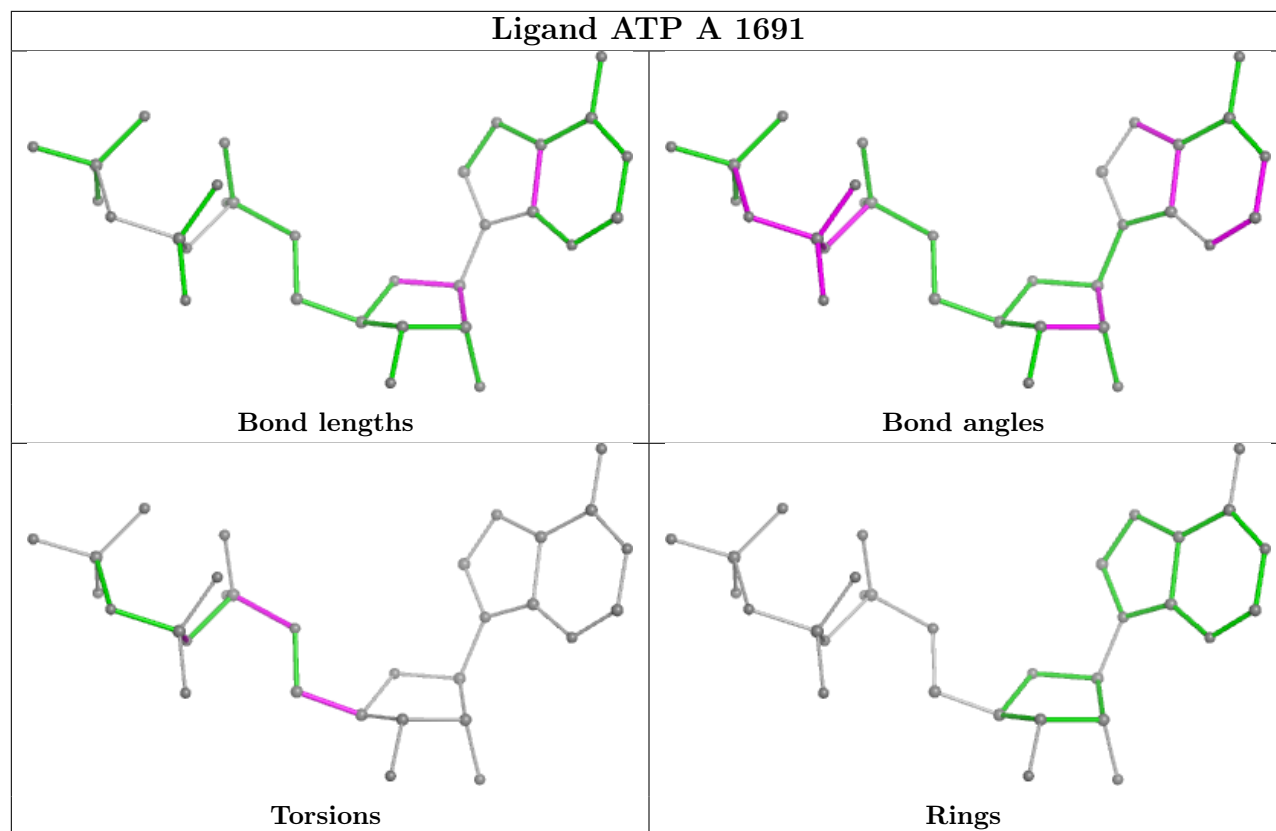
Mol	Chain	Res	Type	Atoms
4	A	1691	ATP	C5'-O5'-PA-O3A
4	A	1691	ATP	O4'-C4'-C5'-O5'
4	B	1692	ATP	C5'-O5'-PA-O2A
4	B	1692	ATP	C5'-O5'-PA-O3A
4	A	1691	ATP	C3'-C4'-C5'-O5'
4	B	1692	ATP	O4'-C4'-C5'-O5'
4	B	1692	ATP	C3'-C4'-C5'-O5'
4	A	1691	ATP	PA-O3A-PB-O2B
4	B	1692	ATP	PG-O3B-PB-O2B
4	B	1692	ATP	PB-O3A-PA-O2A
4	A	1691	ATP	C5'-O5'-PA-O1A
4	A	1691	ATP	C5'-O5'-PA-O2A
4	B	1692	ATP	PB-O3A-PA-O1A

There are no ring outliers.

2 monomers are involved in 5 short contacts:

Mol	Chain	Res	Type	Clashes	Symm-Clashes
4	A	1691	ATP	3	0
4	B	1692	ATP	2	0

The following is a two-dimensional graphical depiction of Mogul quality analysis of bond lengths, bond angles, torsion angles, and ring geometry for all instances of the Ligand of Interest. In addition, ligands with molecular weight > 250 and outliers as shown on the validation Tables will also be included. For torsion angles, if less than 5% of the Mogul distribution of torsion angles is within 10 degrees of the torsion angle in question, then that torsion angle is considered an outlier. Any bond that is central to one or more torsion angles identified as an outlier by Mogul will be highlighted in the graph. For rings, the root-mean-square deviation (RMSD) between the ring in question and similar rings identified by Mogul is calculated over all ring torsion angles. If the average RMSD is greater than 60 degrees and the minimal RMSD between the ring in question and any Mogul-identified rings is also greater than 60 degrees, then that ring is considered an outlier. The outliers are highlighted in purple. The color gray indicates Mogul did not find sufficient equivalents in the CSD to analyse the geometry.



5.7 Other polymers

There are no such residues in this entry.

5.8 Polymer linkage issues

There are no chain breaks in this entry.

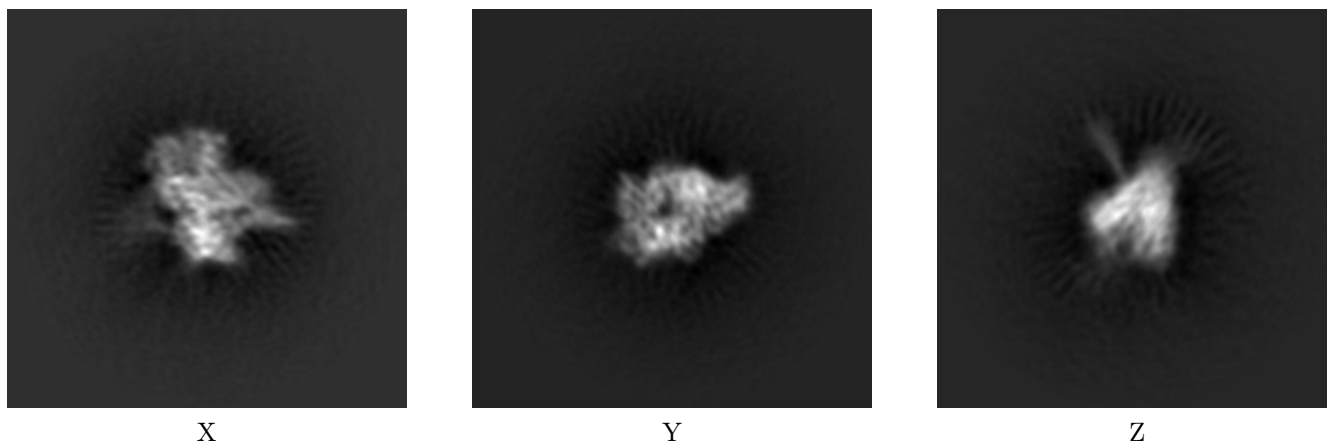
6 Map visualisation [i](#)

This section contains visualisations of the EMDB entry EMD-3340. These allow visual inspection of the internal detail of the map and identification of artifacts.

No raw map or half-maps were deposited for this entry and therefore no images, graphs, etc. pertaining to the raw map can be shown.

6.1 Orthogonal projections [i](#)

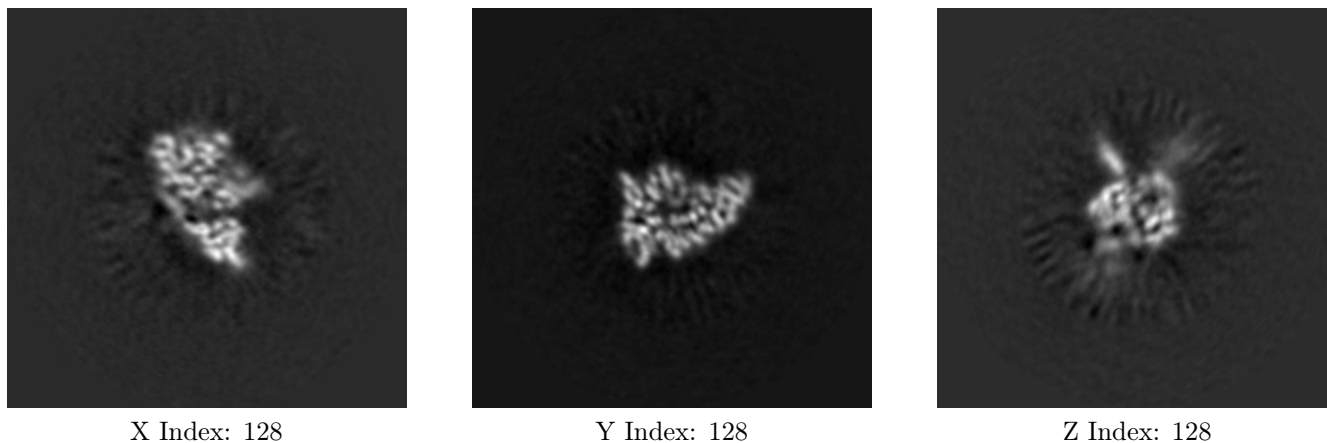
6.1.1 Primary map



The images above show the map projected in three orthogonal directions.

6.2 Central slices [i](#)

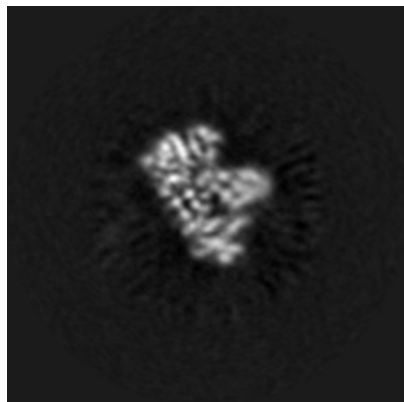
6.2.1 Primary map



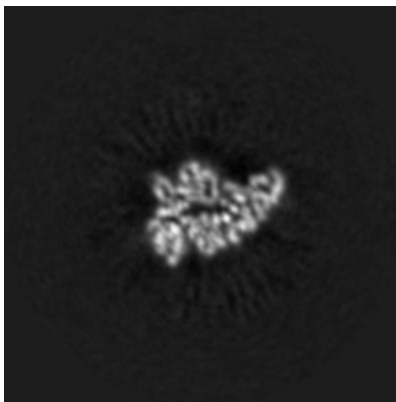
The images above show central slices of the map in three orthogonal directions.

6.3 Largest variance slices [i](#)

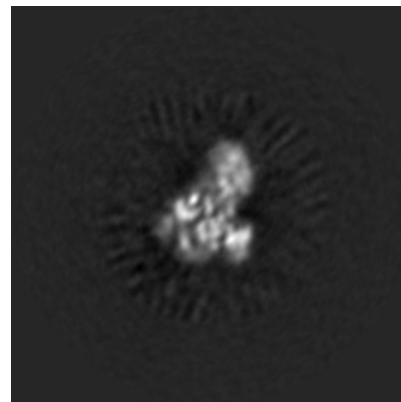
6.3.1 Primary map



X Index: 140



Y Index: 125

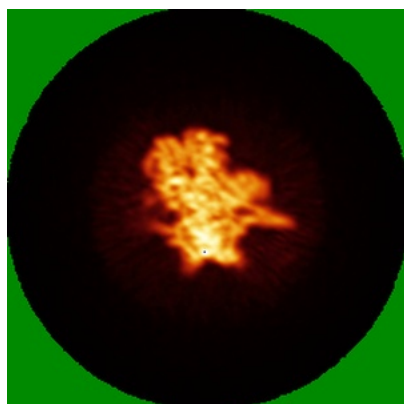


Z Index: 145

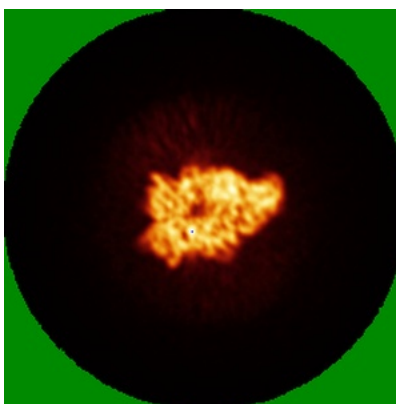
The images above show the largest variance slices of the map in three orthogonal directions.

6.4 Orthogonal standard-deviation projections (False-color) [i](#)

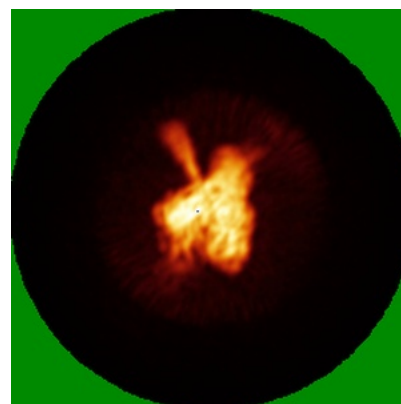
6.4.1 Primary map



X



Y

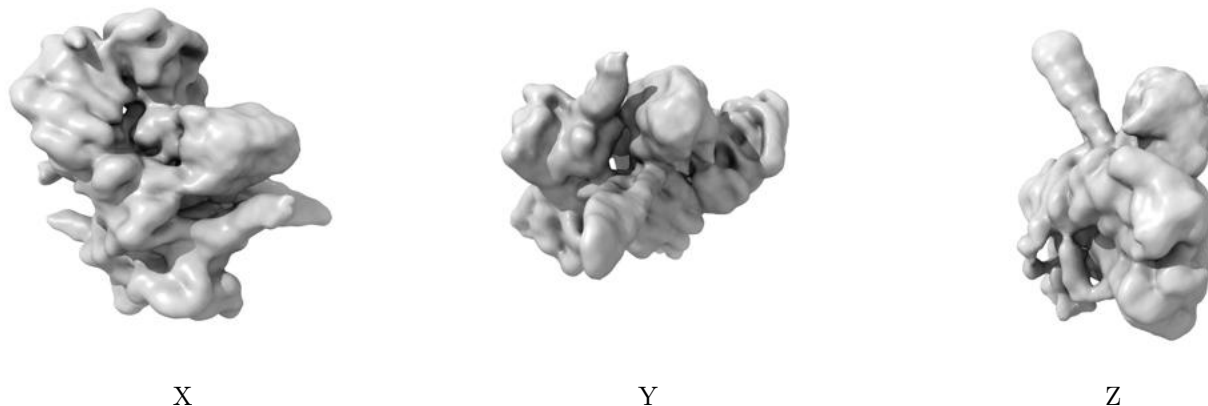


Z

The images above show the map standard deviation projections with false color in three orthogonal directions. Minimum values are shown in green, max in blue, and dark to light orange shades represent small to large values respectively.

6.5 Orthogonal surface views [i](#)

6.5.1 Primary map



The images above show the 3D surface view of the map at the recommended contour level 0.0068. These images, in conjunction with the slice images, may facilitate assessment of whether an appropriate contour level has been provided.

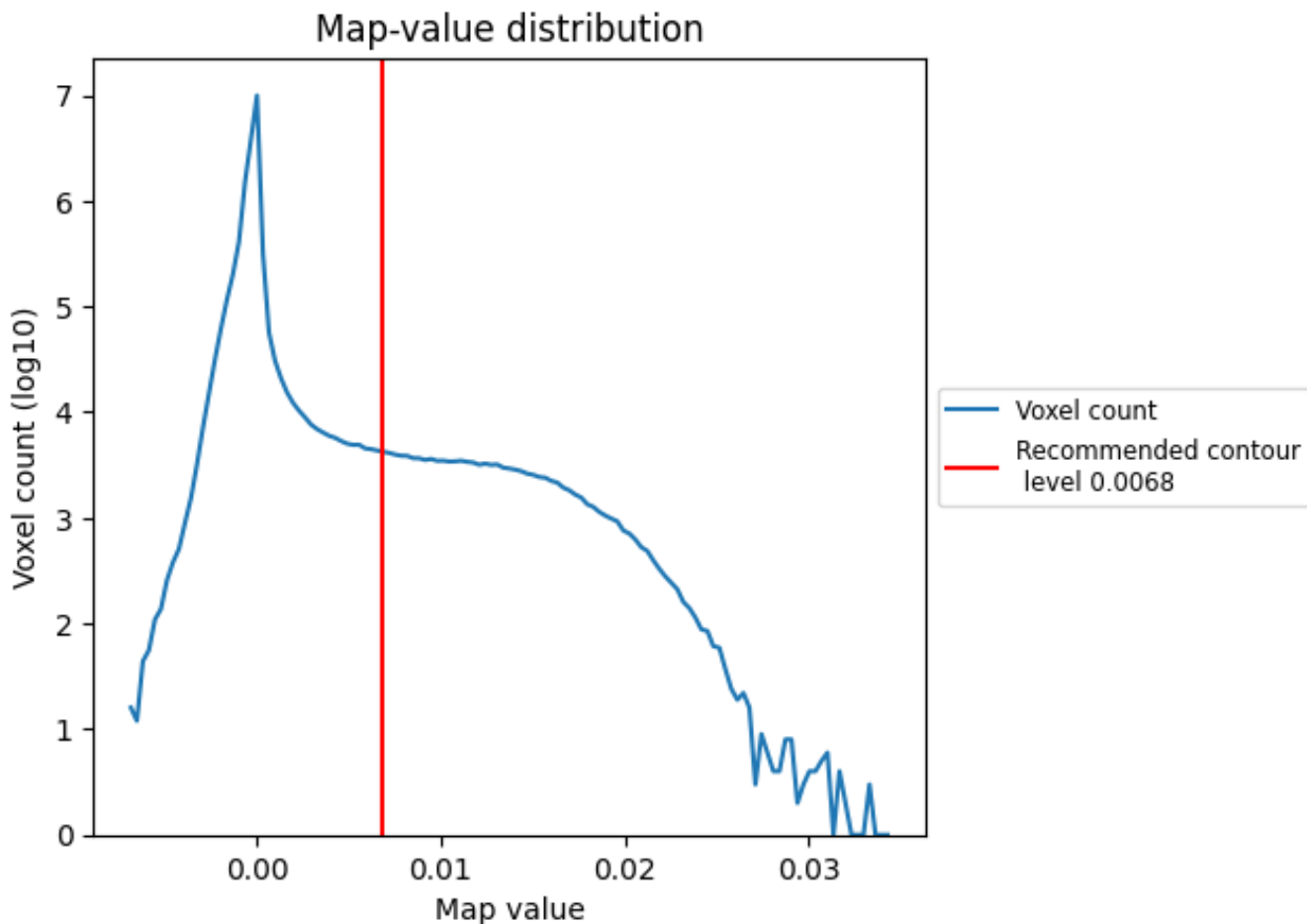
6.6 Mask visualisation [i](#)

This section was not generated. No masks/segmentation were deposited.

7 Map analysis [i](#)

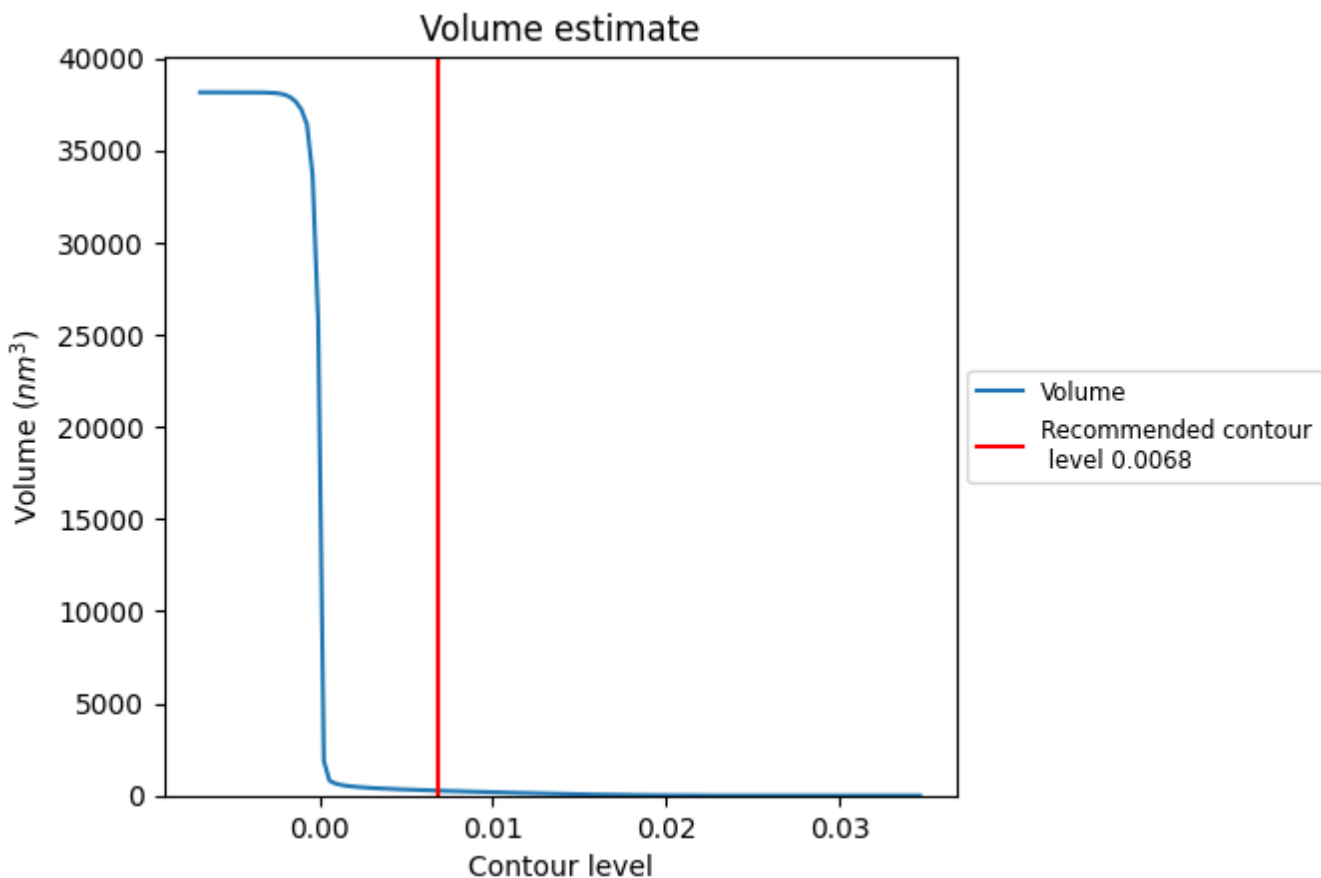
This section contains the results of statistical analysis of the map.

7.1 Map-value distribution [i](#)



The map-value distribution is plotted in 128 intervals along the x-axis. The y-axis is logarithmic. A spike in this graph at zero usually indicates that the volume has been masked.

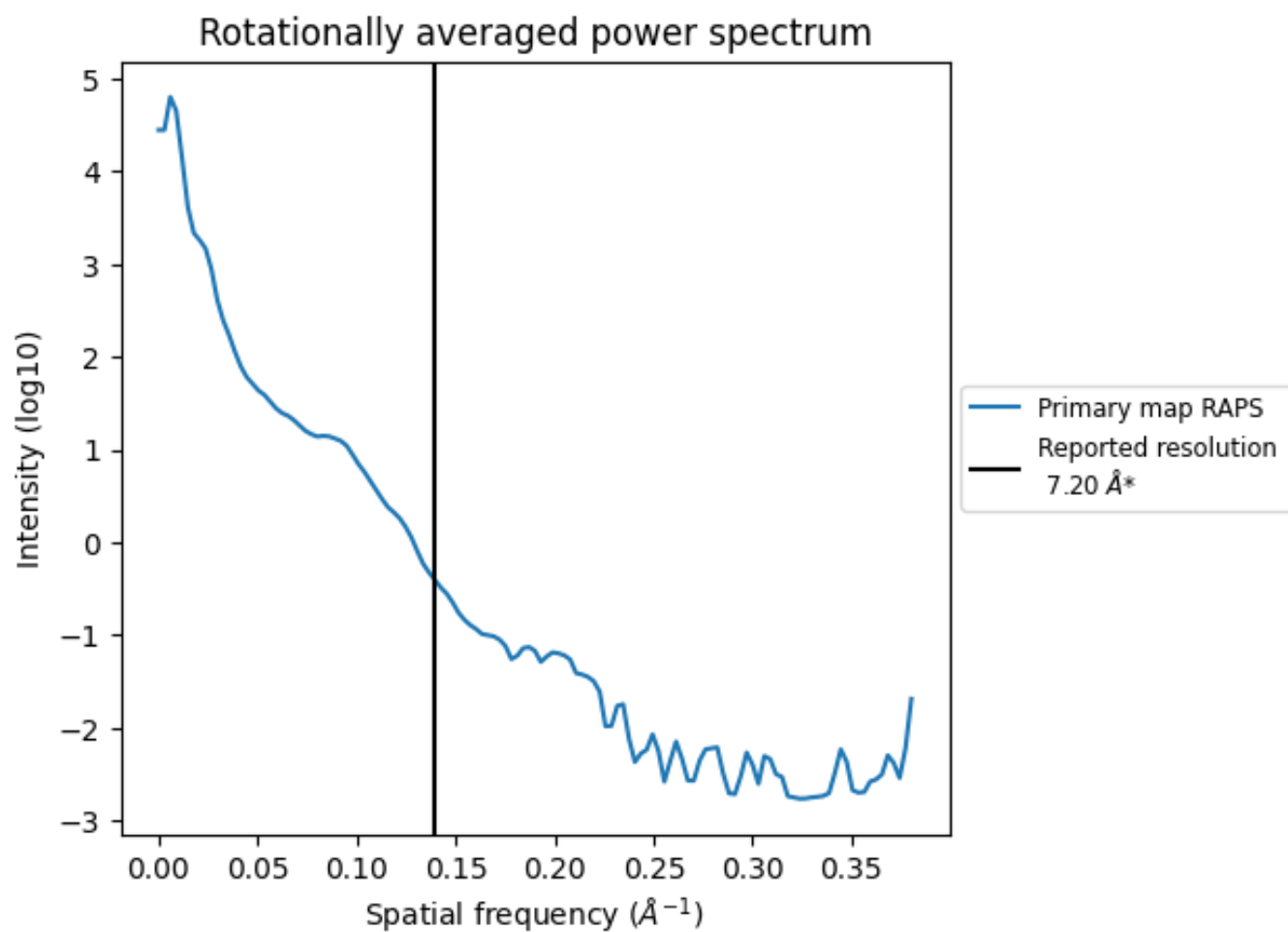
7.2 Volume estimate [i](#)



The volume at the recommended contour level is 266 nm³; this corresponds to an approximate mass of 241 kDa.

The volume estimate graph shows how the enclosed volume varies with the contour level. The recommended contour level is shown as a vertical line and the intersection between the line and the curve gives the volume of the enclosed surface at the given level.

7.3 Rotationally averaged power spectrum [i](#)

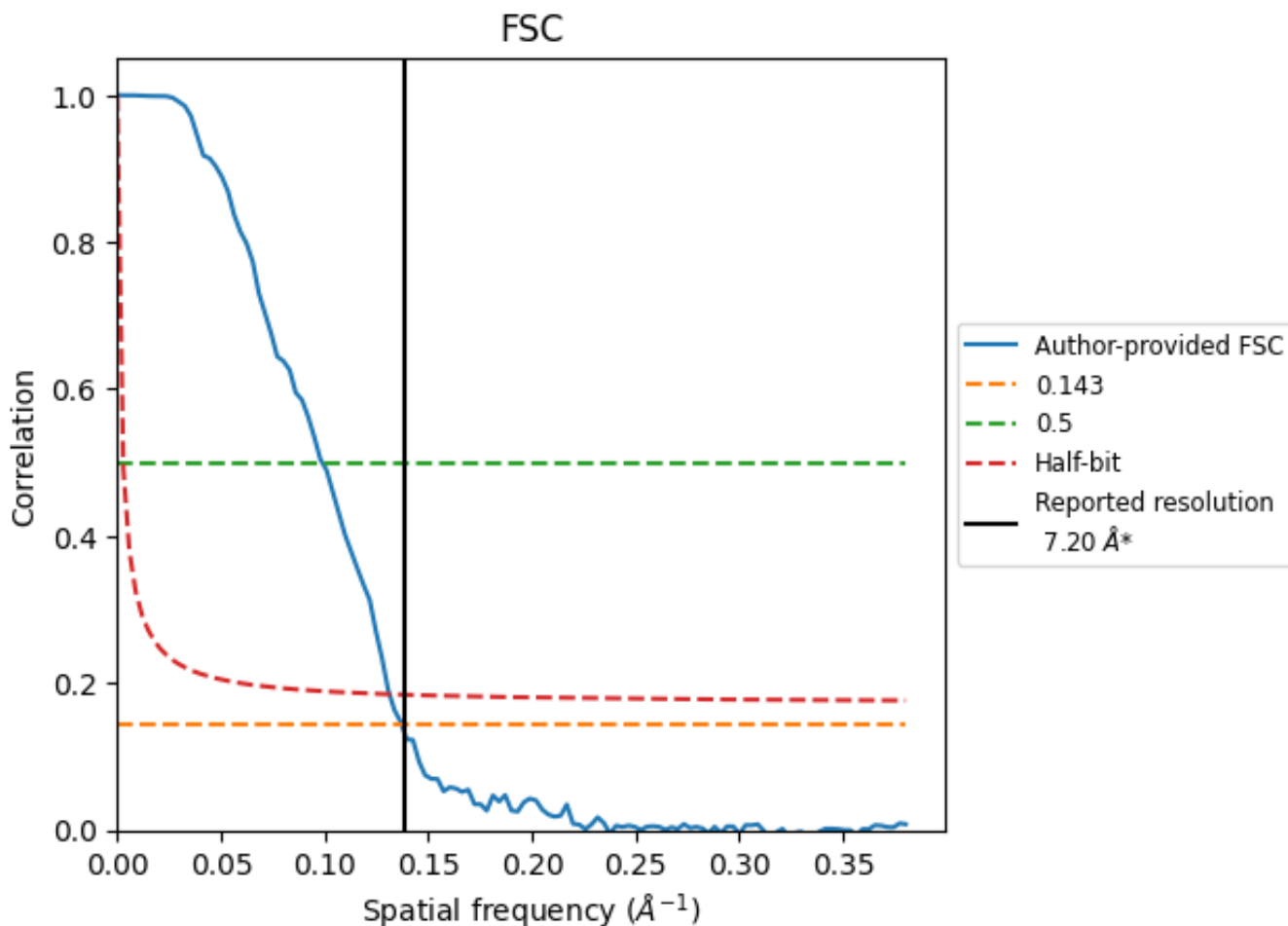


*Reported resolution corresponds to spatial frequency of 0.139\AA^{-1}

8 Fourier-Shell correlation [i](#)

Fourier-Shell Correlation (FSC) is the most commonly used method to estimate the resolution of single-particle and subtomogram-averaged maps. The shape of the curve depends on the imposed symmetry, mask and whether or not the two 3D reconstructions used were processed from a common reference. The reported resolution is shown as a black line. A curve is displayed for the half-bit criterion in addition to lines showing the 0.143 gold standard cut-off and 0.5 cut-off.

8.1 FSC [i](#)



*Reported resolution corresponds to spatial frequency of 0.139 Å⁻¹

8.2 Resolution estimates [i](#)

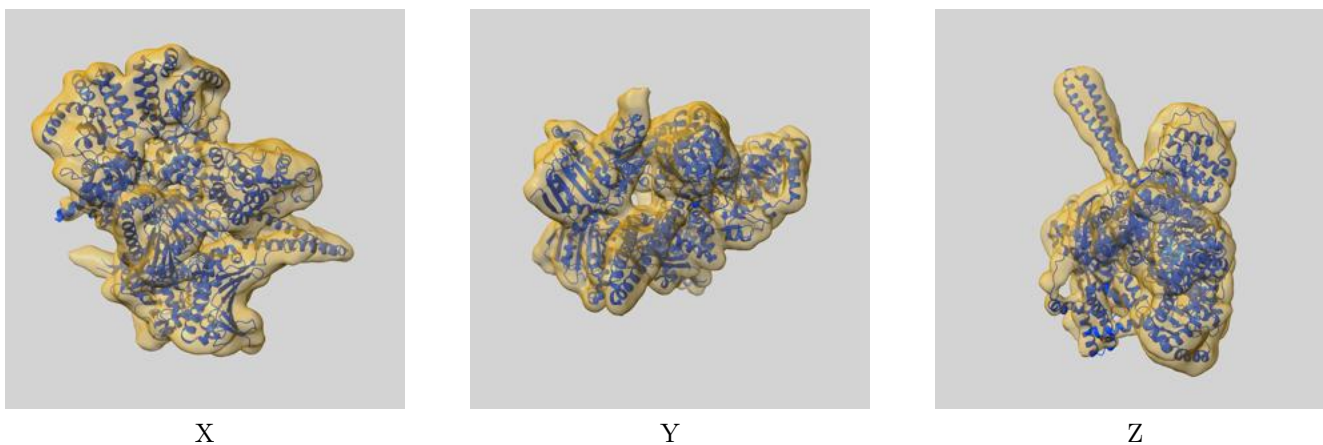
Resolution estimate (Å)	Estimation criterion (FSC cut-off)		
	0.143	0.5	Half-bit
Reported by author	-	-	-
Author-provided FSC curve	7.29	10.11	7.62
Unmasked-calculated*	-	-	-

*Resolution estimate based on FSC curve calculated by comparison of deposited half-maps.

9 Map-model fit [i](#)

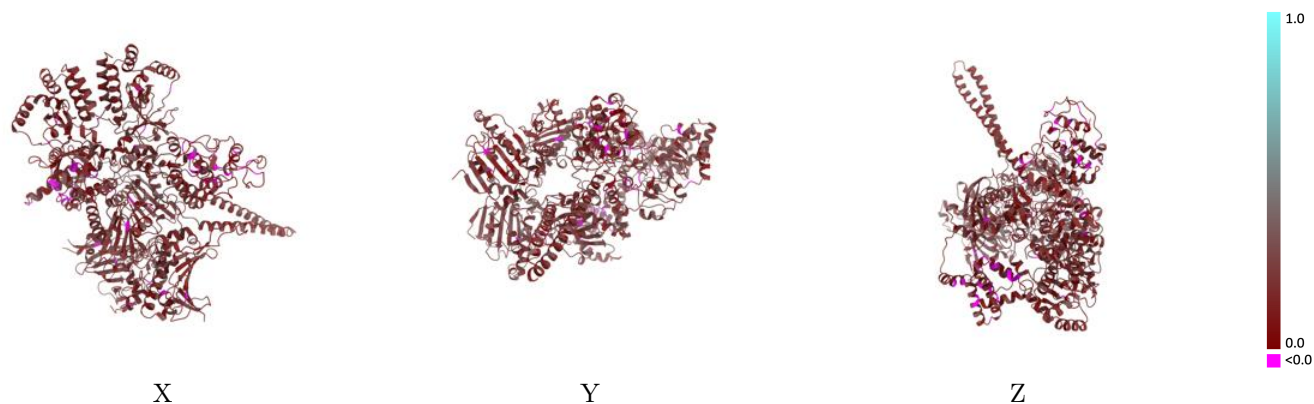
This section contains information regarding the fit between EMDB map EMD-3340 and PDB model 5FWP. Per-residue inclusion information can be found in section [3](#) on page [5](#).

9.1 Map-model overlay [i](#)



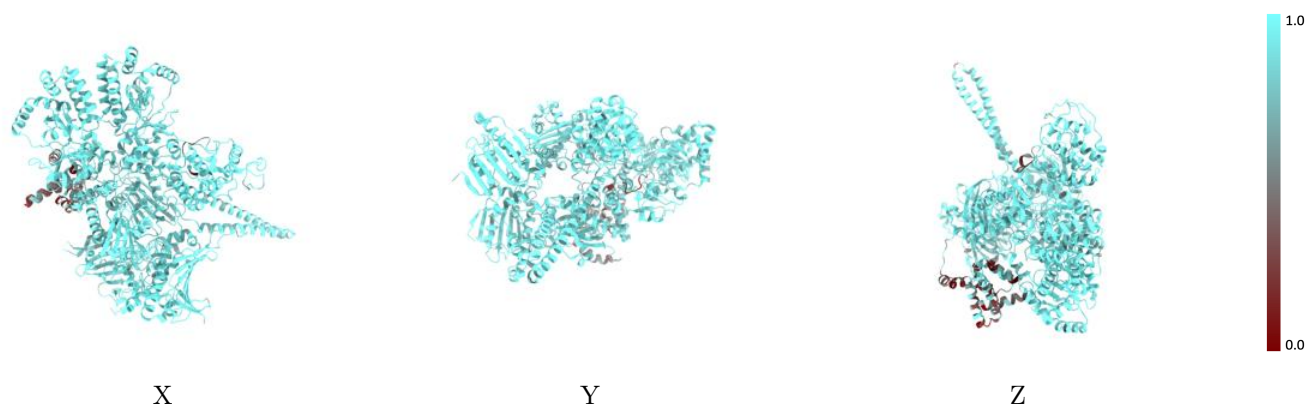
The images above show the 3D surface view of the map at the recommended contour level 0.0068 at 50% transparency in yellow overlaid with a ribbon representation of the model coloured in blue. These images allow for the visual assessment of the quality of fit between the atomic model and the map.

9.2 Q-score mapped to coordinate model [i](#)



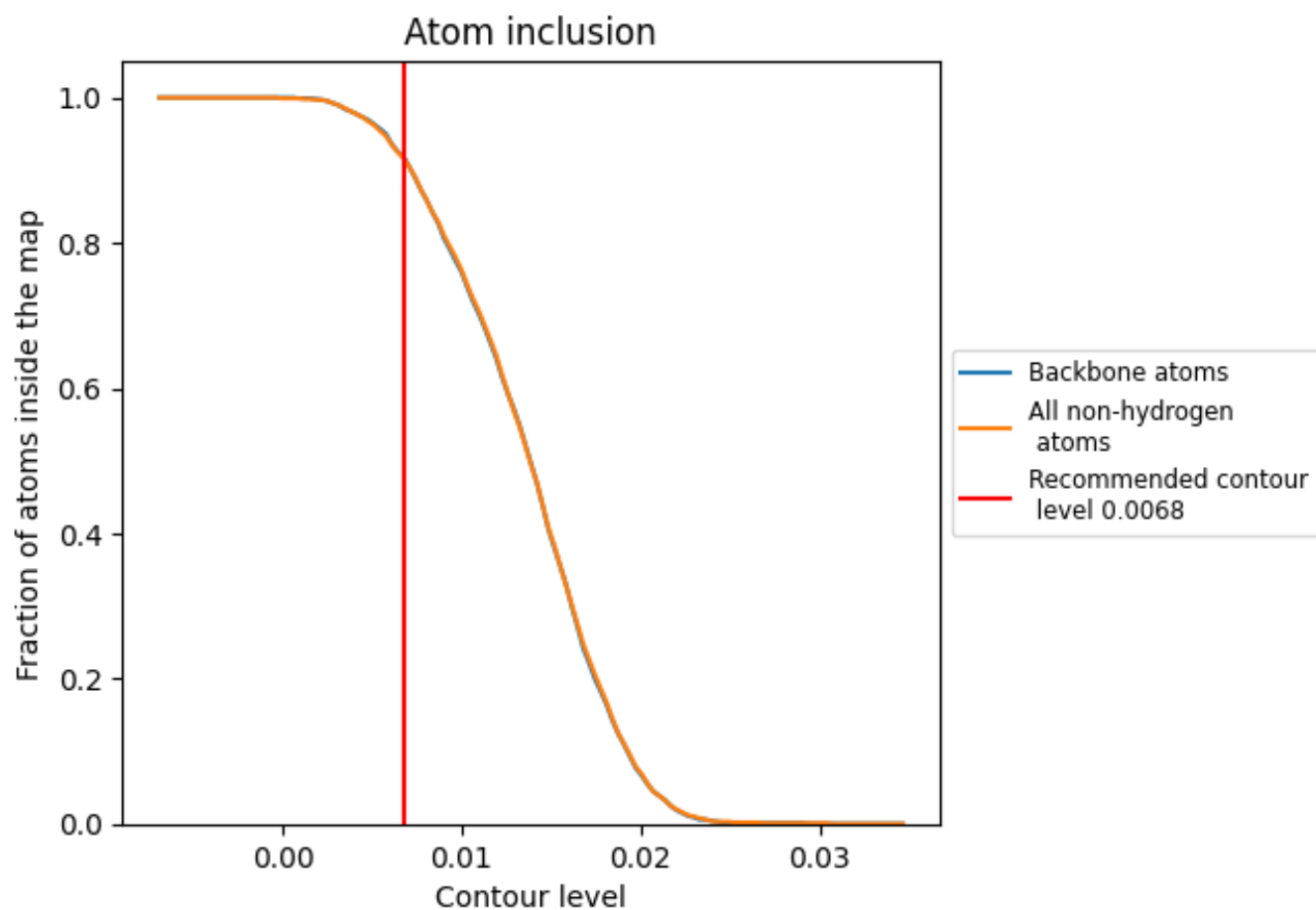
The images above show the model with each residue coloured according to its Q-score. This shows their resolvability in the map with higher Q-score values reflecting better resolvability. Please note: Q-score is calculating the resolvability of atoms, and thus high values are only expected at resolutions at which atoms can be resolved. Low Q-score values may therefore be expected for many entries.

9.3 Atom inclusion mapped to coordinate model [i](#)



The images above show the model with each residue coloured according to its atom inclusion. This shows to what extent they are inside the map at the recommended contour level (0.0068).











9.4 Atom inclusion [i](#)



At the recommended contour level, 92% of all backbone atoms, 92% of all non-hydrogen atoms, are inside the map.

9.5 Map-model fit summary [i](#)

The table lists the average atom inclusion at the recommended contour level (0.0068) and Q-score for the entire model and for each chain.

Chain	Atom inclusion	Q-score
All	 0.9150	 0.1890
A	 0.9450	 0.2000
B	 0.9460	 0.2020
E	 0.7430	 0.1580
K	 0.9440	 0.1560

