



Full wwPDB X-ray Structure Validation Report ⓘ

Apr 28, 2024 – 08:42 pm BST

PDB ID : 5FL0
Title : Structure of a hydrolase with an inhibitor
Authors : Cekic, N.; Heinonen, J.E.; Stubbs, K.A.; Roth, C.; McEachern, E.J.; Davies, G.J.; Voadlo, D.J.
Deposited on : 2015-10-20
Resolution : 1.95 Å(reported)

This is a Full wwPDB X-ray Structure Validation Report for a publicly released PDB entry.

We welcome your comments at validation@mail.wwpdb.org

A user guide is available at

<https://www.wwpdb.org/validation/2017/XrayValidationReportHelp>

with specific help available everywhere you see the ⓘ symbol.

The types of validation reports are described at

<http://www.wwpdb.org/validation/2017/FAQs#types>.

The following versions of software and data (see [references ⓘ](#)) were used in the production of this report:

MolProbity : 4.02b-467
Mogul : 1.8.4, CSD as541be (2020)
Xtriage (Phenix) : 1.13
EDS : 2.36.2
buster-report : 1.1.7 (2018)
Percentile statistics : 20191225.v01 (using entries in the PDB archive December 25th 2019)
Refmac : 5.8.0158
CCP4 : 7.0.044 (Gargrove)
Ideal geometry (proteins) : Engh & Huber (2001)
Ideal geometry (DNA, RNA) : Parkinson et al. (1996)
Validation Pipeline (wwPDB-VP) : 2.36.2

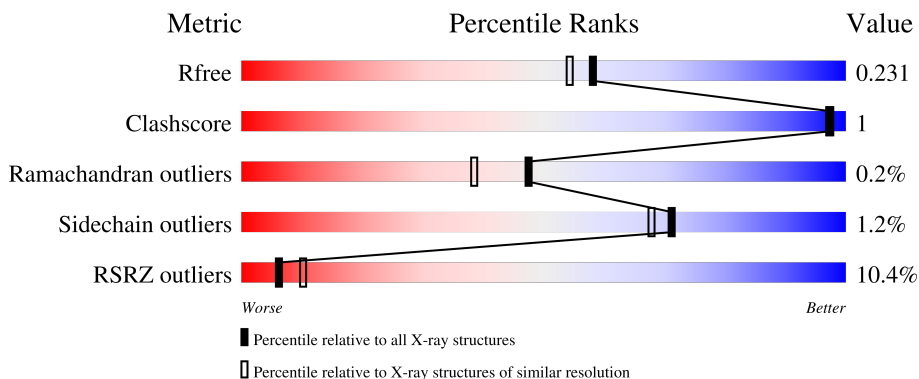
1 Overall quality at a glance

The following experimental techniques were used to determine the structure:

X-RAY DIFFRACTION

The reported resolution of this entry is 1.95 Å.

Percentile scores (ranging between 0-100) for global validation metrics of the entry are shown in the following graphic. The table shows the number of entries on which the scores are based.



Metric	Whole archive (#Entries)	Similar resolution (#Entries, resolution range(Å))
R_{free}	130704	2580 (1.96-1.96)
Clashscore	141614	2705 (1.96-1.96)
Ramachandran outliers	138981	2678 (1.96-1.96)
Sidechain outliers	138945	2678 (1.96-1.96)
RSRZ outliers	127900	2539 (1.96-1.96)

The table below summarises the geometric issues observed across the polymeric chains and their fit to the electron density. The red, orange, yellow and green segments of the lower bar indicate the fraction of residues that contain outliers for ≥ 3 , 2, 1 and 0 types of geometric quality criteria respectively. A grey segment represents the fraction of residues that are not modelled. The numeric value for each fraction is indicated below the corresponding segment, with a dot representing fractions $\leq 5\%$. The upper red bar (where present) indicates the fraction of residues that have poor fit to the electron density. The numeric value is given above the bar.

Mol	Chain	Length	Quality of chain
1	A	716	 9% 90% 7%
1	B	716	 10% 92% 5%

2 Entry composition [i](#)

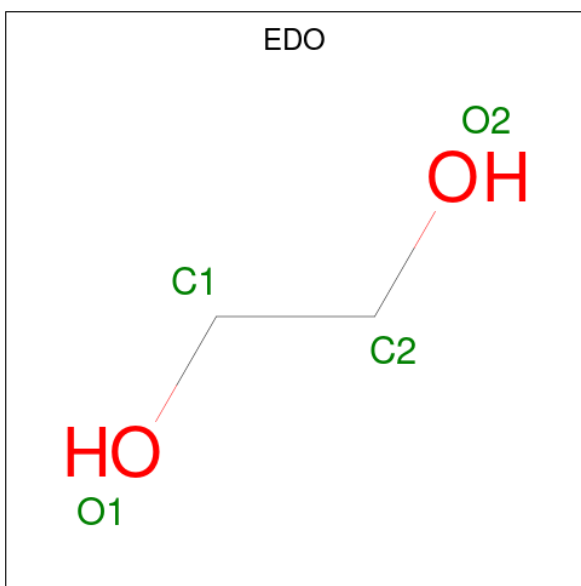
There are 5 unique types of molecules in this entry. The entry contains 22515 atoms, of which 10909 are hydrogens and 0 are deuteriums.

In the tables below, the ZeroOcc column contains the number of atoms modelled with zero occupancy, the AltConf column contains the number of residues with at least one atom in alternate conformation and the Trace column contains the number of residues modelled with at most 2 atoms.

- Molecule 1 is a protein called O-GLCNACASE BT_4395.

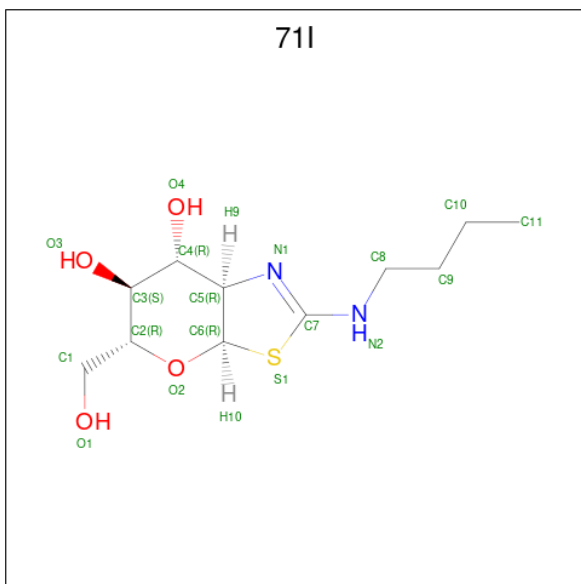
Mol	Chain	Residues	Atoms						ZeroOcc	AltConf	Trace
			Total	C	H	N	O	S			
1	A	668	10816	3487	5368	918	1023	20	0	6	0
1	B	682	11025	3546	5477	942	1041	19	0	3	0

- Molecule 2 is 1,2-ETHANEDIOL (three-letter code: EDO) (formula: C₂H₆O₂).



Mol	Chain	Residues	Atoms				ZeroOcc	AltConf
			Total	C	H	O		
2	A	1	10	2	6	2	0	0
2	A	1	10	2	6	2	0	0
2	B	1	10	2	6	2	0	0
2	B	1	10	2	6	2	0	0

- Molecule 3 is (3 {a} {R},5 {R},6 {S},7 {R},7 {a} {R})-2-(butylamino)-5-(hydroxymethyl)-5,6,7,7 {a}-tetrahydro-3 {a} {H}-pyrano[3,2-d] [1,3]thiazole-6,7-diol (three-letter code: 71I) (formula: C₁₁H₂₀N₂O₄S).



Mol	Chain	Residues	Atoms					ZeroOcc	AltConf	
			Total	C	H	N	O			S
3	A	1	Total	C	H	N	O	S	0	0
			38	11	20	2	4	1		
3	B	1	Total	C	H	N	O	S	0	0
			38	11	20	2	4	1		

- Molecule 4 is CALCIUM ION (three-letter code: CA) (formula: Ca).

Mol	Chain	Residues	Atoms		ZeroOcc	AltConf
			Total	Ca		
4	B	1	Total	Ca	0	0
			1	1		

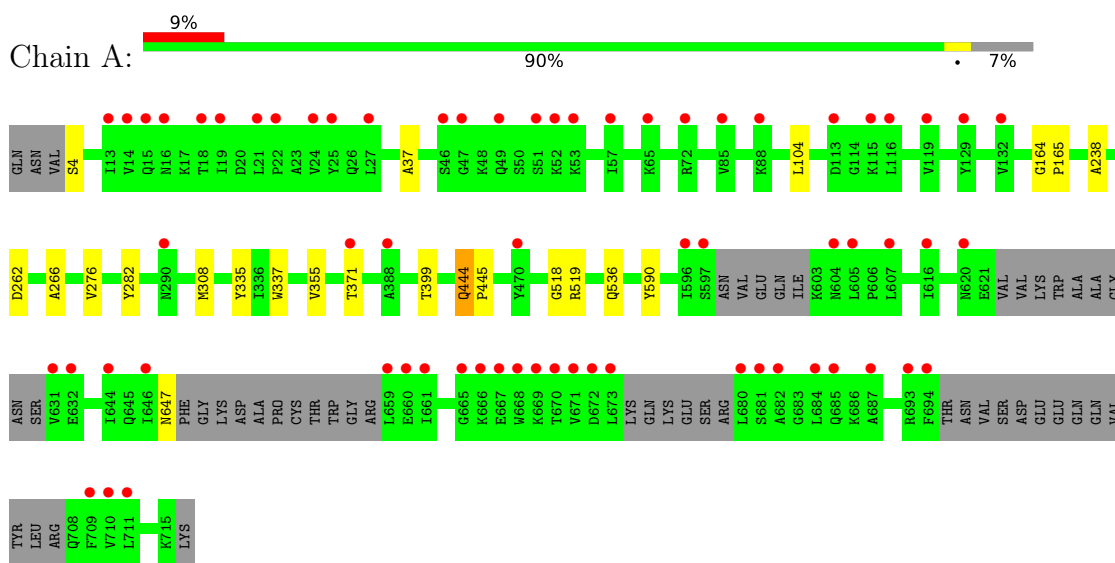
- Molecule 5 is water.

Mol	Chain	Residues	Atoms		ZeroOcc	AltConf
			Total	O		
5	A	294	Total	O	0	0
			294	294		
5	B	263	Total	O	0	0
			263	263		

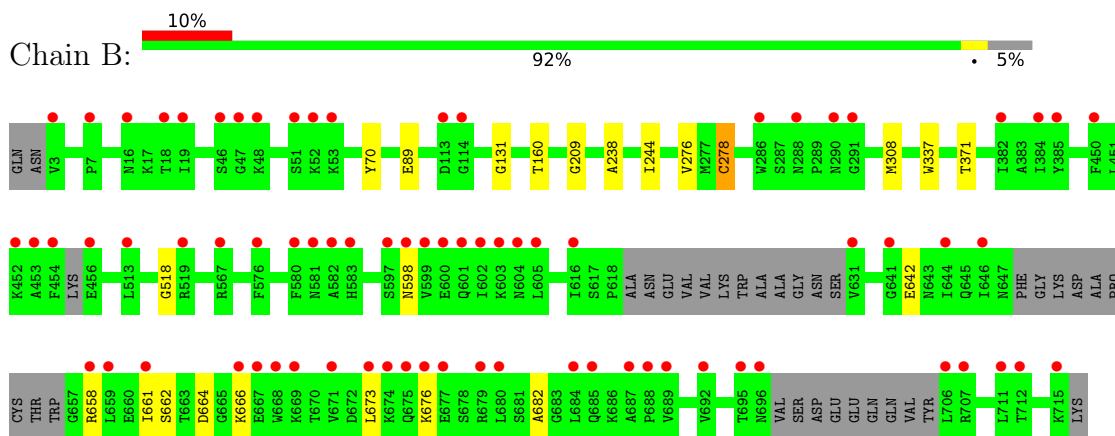
3 Residue-property plots [i](#)

These plots are drawn for all protein, RNA, DNA and oligosaccharide chains in the entry. The first graphic for a chain summarises the proportions of the various outlier classes displayed in the second graphic. The second graphic shows the sequence view annotated by issues in geometry and electron density. Residues are color-coded according to the number of geometric quality criteria for which they contain at least one outlier: green = 0, yellow = 1, orange = 2 and red = 3 or more. A red dot above a residue indicates a poor fit to the electron density ($RSRZ > 2$). Stretches of 2 or more consecutive residues without any outlier are shown as a green connector. Residues present in the sample, but not in the model, are shown in grey.

- Molecule 1: O-GLCNACASE BT_4395



- Molecule 1: O-GLCNACASE BT_4395



4 Data and refinement statistics

Property	Value	Source
Space group	P 2 21 21	Depositor
Cell constants a, b, c, α , β , γ	51.53Å 162.13Å 223.64Å 90.00° 90.00° 90.00°	Depositor
Resolution (Å)	44.96 – 1.95 44.96 – 1.95	Depositor EDS
% Data completeness (in resolution range)	99.6 (44.96-1.95) 99.9 (44.96-1.95)	Depositor EDS
R_{merge}	0.10	Depositor
R_{sym}	(Not available)	Depositor
$\langle I/\sigma(I) \rangle$ ¹	1.92 (at 1.95Å)	Xtrriage
Refinement program	PHENIX (PHENIX.REFINE)	Depositor
R, R_{free}	0.200 , 0.227 0.203 , 0.231	Depositor DCC
R_{free} test set	6877 reflections (5.00%)	wwPDB-VP
Wilson B-factor (Å ²)	32.2	Xtrriage
Anisotropy	0.721	Xtrriage
Bulk solvent k_{sol} (e/Å ³), B_{sol} (Å ²)	0.39 , 44.1	EDS
L-test for twinning ²	$\langle L \rangle = 0.49$, $\langle L^2 \rangle = 0.32$	Xtrriage
Estimated twinning fraction	No twinning to report.	Xtrriage
F_o, F_c correlation	0.96	EDS
Total number of atoms	22515	wwPDB-VP
Average B, all atoms (Å ²)	57.0	wwPDB-VP

Xtrriage's analysis on translational NCS is as follows: *The largest off-origin peak in the Patterson function is 19.63% of the height of the origin peak. No significant pseudotranslation is detected.*

¹Intensities estimated from amplitudes.

²Theoretical values of $\langle |L| \rangle$, $\langle L^2 \rangle$ for acentric reflections are 0.5, 0.333 respectively for untwinned datasets, and 0.375, 0.2 for perfectly twinned datasets.

5 Model quality

5.1 Standard geometry

Bond lengths and bond angles in the following residue types are not validated in this section: CA, EDO, 71I

The Z score for a bond length (or angle) is the number of standard deviations the observed value is removed from the expected value. A bond length (or angle) with $|Z| > 5$ is considered an outlier worth inspection. RMSZ is the root-mean-square of all Z scores of the bond lengths (or angles).

Mol	Chain	Bond lengths		Bond angles	
		RMSZ	# Z >5	RMSZ	# Z >5
1	A	0.39	0/5597	0.53	0/7580
1	B	0.39	0/5698	0.52	0/7720
All	All	0.39	0/11295	0.52	0/15300

There are no bond length outliers.

There are no bond angle outliers.

There are no chirality outliers.

There are no planarity outliers.

5.2 Too-close contacts

In the following table, the Non-H and H(model) columns list the number of non-hydrogen atoms and hydrogen atoms in the chain respectively. The H(added) column lists the number of hydrogen atoms added and optimized by MolProbity. The Clashes column lists the number of clashes within the asymmetric unit, whereas Symm-Clashes lists symmetry-related clashes.

Mol	Chain	Non-H	H(model)	H(added)	Clashes	Symm-Clashes
1	A	5448	5368	5348	11	0
1	B	5548	5477	5466	7	0
2	A	8	12	12	0	0
2	B	8	12	12	0	0
3	A	18	20	0	1	0
3	B	18	20	0	0	0
4	B	1	0	0	0	0
5	A	294	0	0	1	0
5	B	263	0	0	0	0
All	All	11606	10909	10838	18	0

The all-atom clashscore is defined as the number of clashes found per 1000 atoms (including

hydrogen atoms). The all-atom clashscore for this structure is 1.

All (18) close contacts within the same asymmetric unit are listed below, sorted by their clash magnitude.

Atom-1	Atom-2	Interatomic distance (Å)	Clash overlap (Å)
1:A:4:SER:N	5:A:2001:HOH:O	2.38	0.57
1:B:673:LEU:HD23	1:B:682:ALA:HB2	1.91	0.52
1:A:444:GLN:HG3	1:A:445:PRO:HD3	1.92	0.52
1:B:70:TYR:OH	1:B:89:GLU:OE2	2.24	0.51
1:A:238:ALA:HA	1:A:276:VAL:O	2.15	0.46
1:A:282:TYR:HB2	3:A:1718:71I:C11	2.47	0.45
1:B:238:ALA:HA	1:B:276:VAL:O	2.18	0.43
1:A:164:GLY:N	1:A:165:PRO:HD3	2.34	0.42
1:A:37:ALA:HB1	1:A:104:LEU:HD12	2.01	0.41
1:A:355:VAL:O	1:A:399:THR:HG23	2.20	0.41
1:B:278[B]:CYS:SG	1:B:308:MET:SD	3.18	0.41
1:A:37:ALA:O	1:A:104:LEU:HD13	2.21	0.41
1:A:262:ASP:HA	1:A:266:ALA:HB3	2.03	0.41
1:B:131:GLY:HA3	1:B:160:THR:O	2.21	0.41
1:B:209:GLY:HA3	1:B:244:ILE:HD13	2.03	0.41
1:A:536:GLN:HG2	1:A:590:TYR:CD1	2.55	0.40
1:B:662:SER:OG	1:B:664:ASP:O	2.23	0.40
1:A:308:MET:HA	1:A:335:TYR:O	2.21	0.40

There are no symmetry-related clashes.

5.3 Torsion angles [i](#)

5.3.1 Protein backbone [i](#)

In the following table, the Percentiles column shows the percent Ramachandran outliers of the chain as a percentile score with respect to all X-ray entries followed by that with respect to entries of similar resolution.

The Analysed column shows the number of residues for which the backbone conformation was analysed, and the total number of residues.

Mol	Chain	Analysed	Favoured	Allowed	Outliers	Percentiles
1	A	662/716 (92%)	645 (97%)	16 (2%)	1 (0%)	47 38
1	B	677/716 (95%)	651 (96%)	25 (4%)	1 (0%)	51 43
All	All	1339/1432 (94%)	1296 (97%)	41 (3%)	2 (0%)	47 43

All (2) Ramachandran outliers are listed below:

Mol	Chain	Res	Type
1	A	518	GLY
1	B	518	GLY

5.3.2 Protein sidechains [i](#)

In the following table, the Percentiles column shows the percent sidechain outliers of the chain as a percentile score with respect to all X-ray entries followed by that with respect to entries of similar resolution.

The Analysed column shows the number of residues for which the sidechain conformation was analysed, and the total number of residues.

Mol	Chain	Analysed	Rotameric	Outliers	Percentiles	
1	A	594/630 (94%)	589 (99%)	5 (1%)	81	80
1	B	605/630 (96%)	595 (98%)	10 (2%)	60	55
All	All	1199/1260 (95%)	1184 (99%)	15 (1%)	71	65

All (15) residues with a non-rotameric sidechain are listed below:

Mol	Chain	Res	Type
1	A	337	TRP
1	A	371	THR
1	A	444	GLN
1	A	519	ARG
1	A	647	ASN
1	B	278[A]	CYS
1	B	278[B]	CYS
1	B	337	TRP
1	B	371	THR
1	B	598	ASN
1	B	642	GLU
1	B	658	ARG
1	B	661	ILE
1	B	666	LYS
1	B	676	LYS

Sometimes sidechains can be flipped to improve hydrogen bonding and reduce clashes. All (2) such sidechains are listed below:

Mol	Chain	Res	Type
1	A	372	ASN
1	B	372	ASN

5.3.3 RNA [i](#)

There are no RNA molecules in this entry.

5.4 Non-standard residues in protein, DNA, RNA chains [i](#)

There are no non-standard protein/DNA/RNA residues in this entry.

5.5 Carbohydrates [i](#)

There are no monosaccharides in this entry.

5.6 Ligand geometry [i](#)

Of 7 ligands modelled in this entry, 1 is monoatomic - leaving 6 for Mogul analysis.

In the following table, the Counts columns list the number of bonds (or angles) for which Mogul statistics could be retrieved, the number of bonds (or angles) that are observed in the model and the number of bonds (or angles) that are defined in the Chemical Component Dictionary. The Link column lists molecule types, if any, to which the group is linked. The Z score for a bond length (or angle) is the number of standard deviations the observed value is removed from the expected value. A bond length (or angle) with $|Z| > 2$ is considered an outlier worth inspection. RMSZ is the root-mean-square of all Z scores of the bond lengths (or angles).

Mol	Type	Chain	Res	Link	Bond lengths			Bond angles		
					Counts	RMSZ	# $ Z > 2$	Counts	RMSZ	# $ Z > 2$
2	EDO	B	1717	-	3,3,3	0.43	0	2,2,2	0.19	0
2	EDO	A	1716	-	3,3,3	0.49	0	2,2,2	0.24	0
3	71I	B	1719	-	17,19,19	1.00	1 (5%)	16,26,26	0.95	0
2	EDO	A	1717	-	3,3,3	0.60	0	2,2,2	0.20	0
3	71I	A	1718	-	17,19,19	0.99	1 (5%)	16,26,26	1.38	2 (12%)
2	EDO	B	1718	-	3,3,3	0.45	0	2,2,2	0.39	0

In the following table, the Chirals column lists the number of chiral outliers, the number of chiral centers analysed, the number of these observed in the model and the number defined in the Chemical Component Dictionary. Similar counts are reported in the Torsion and Rings columns. '-' means no outliers of that kind were identified.

Mol	Type	Chain	Res	Link	Chirals	Torsions	Rings
2	EDO	B	1717	-	-	0/1/1/1	-
2	EDO	A	1716	-	-	0/1/1/1	-
3	71I	B	1719	-	-	2/7/35/35	0/2/2/2
2	EDO	A	1717	-	-	0/1/1/1	-
3	71I	A	1718	-	-	0/7/35/35	0/2/2/2
2	EDO	B	1718	-	-	0/1/1/1	-

All (2) bond length outliers are listed below:

Mol	Chain	Res	Type	Atoms	Z	Observed(Å)	Ideal(Å)
3	B	1719	71I	C7-S1	-3.34	1.67	1.76
3	A	1718	71I	C7-S1	-3.03	1.68	1.76

All (2) bond angle outliers are listed below:

Mol	Chain	Res	Type	Atoms	Z	Observed(°)	Ideal(°)
3	A	1718	71I	N2-C7-N1	-3.12	120.19	124.26
3	A	1718	71I	C9-C8-N2	-2.29	105.67	112.21

There are no chirality outliers.

All (2) torsion outliers are listed below:

Mol	Chain	Res	Type	Atoms
3	B	1719	71I	N2-C8-C9-C10
3	B	1719	71I	C11-C10-C9-C8

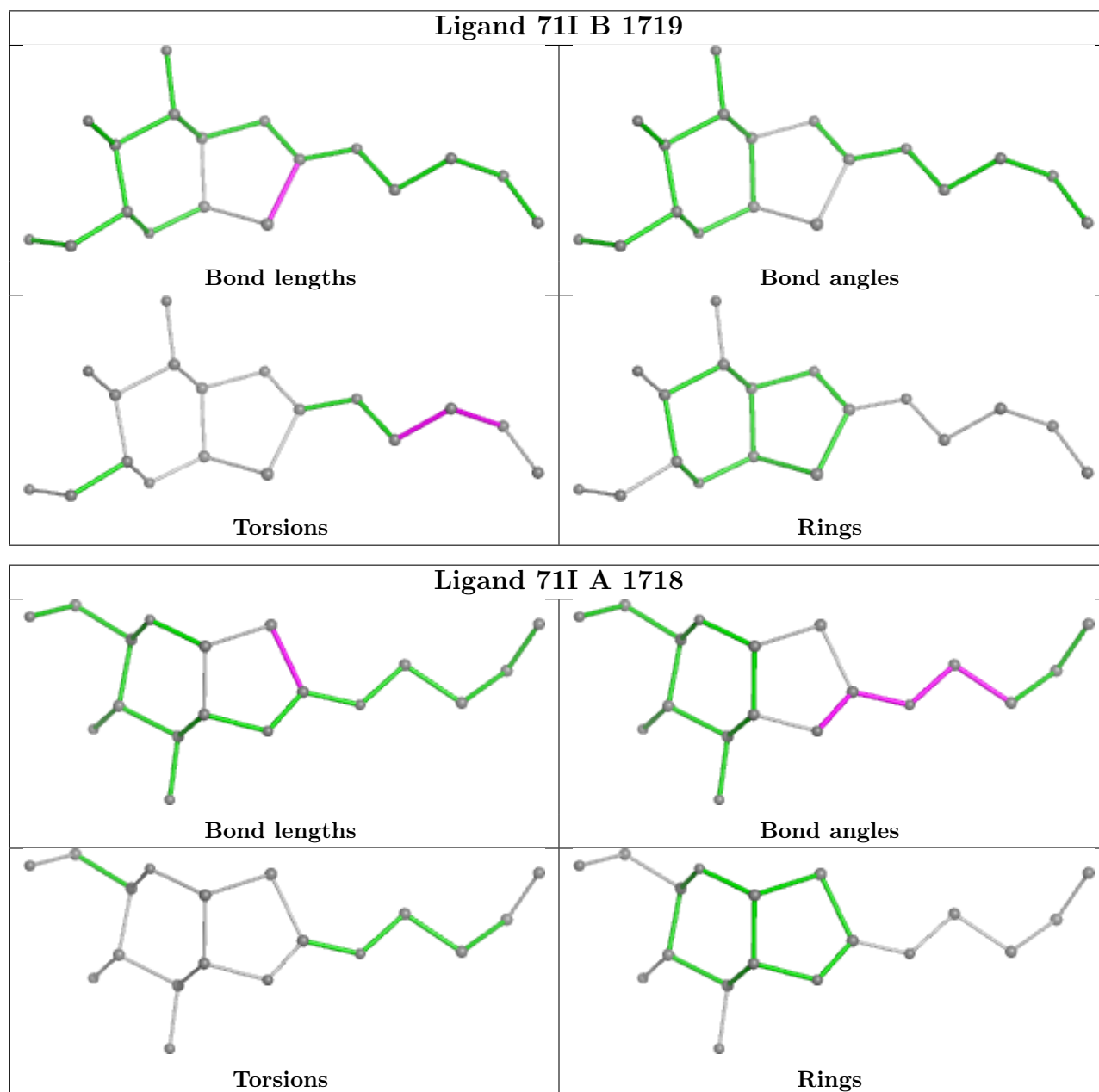
There are no ring outliers.

1 monomer is involved in 1 short contact:

Mol	Chain	Res	Type	Clashes	Symm-Clashes
3	A	1718	71I	1	0

The following is a two-dimensional graphical depiction of Mogul quality analysis of bond lengths, bond angles, torsion angles, and ring geometry for all instances of the Ligand of Interest. In addition, ligands with molecular weight > 250 and outliers as shown on the validation Tables will also be included. For torsion angles, if less than 5% of the Mogul distribution of torsion angles is within 10 degrees of the torsion angle in question, then that torsion angle is considered an outlier. Any bond that is central to one or more torsion angles identified as an outlier by Mogul will be highlighted in the graph. For rings, the root-mean-square deviation (RMSD) between the ring in question and similar rings identified by Mogul is calculated over all ring torsion angles. If the average RMSD is greater than 60 degrees and the minimal RMSD between the ring in question and any Mogul-identified rings is also greater than 60 degrees, then that ring is considered an outlier.

The outliers are highlighted in purple. The color gray indicates Mogul did not find sufficient equivalents in the CSD to analyse the geometry.



5.7 Other polymers [i](#)

There are no such residues in this entry.

5.8 Polymer linkage issues [i](#)

There are no chain breaks in this entry.

6 Fit of model and data

6.1 Protein, DNA and RNA chains

In the following table, the column labelled ‘#RSRZ > 2’ contains the number (and percentage) of RSRZ outliers, followed by percent RSRZ outliers for the chain as percentile scores relative to all X-ray entries and entries of similar resolution. The OWAB column contains the minimum, median, 95th percentile and maximum values of the occupancy-weighted average B-factor per residue. The column labelled ‘Q < 0.9’ lists the number of (and percentage) of residues with an average occupancy less than 0.9.

Mol	Chain	Analysed	<RSRZ>	#RSRZ>2	OWAB(Å ²)	Q<0.9
1	A	668/716 (93%)	0.64	66 (9%) 7 12	30, 46, 94, 136	0
1	B	682/716 (95%)	0.66	75 (10%) 5 9	27, 45, 99, 131	0
All	All	1350/1432 (94%)	0.65	141 (10%) 6 10	27, 46, 96, 136	0

All (141) RSRZ outliers are listed below:

Mol	Chain	Res	Type	RSRZ
1	B	706	LEU	7.6
1	A	646	ILE	7.3
1	B	290	ASN	6.5
1	A	673	LEU	6.5
1	B	673	LEU	6.4
1	A	709	PHE	6.1
1	B	661	ILE	5.9
1	A	680	LEU	5.9
1	B	48	LYS	5.5
1	A	661	ILE	5.4
1	A	671	VAL	5.2
1	A	14	VAL	5.1
1	A	659	LEU	5.0
1	B	688	PRO	4.9
1	A	616	ILE	4.8
1	A	47	GLY	4.8
1	B	666	LYS	4.7
1	B	601	GLN	4.7
1	B	674	LYS	4.4
1	A	88	LYS	4.2
1	B	679	ARG	4.2
1	A	644	ILE	4.1
1	A	53	LYS	4.1
1	A	604	ASN	4.0

Continued on next page...

Continued from previous page...

Mol	Chain	Res	Type	RSRZ
1	B	599	VAL	4.0
1	B	602	ILE	4.0
1	A	668	TRP	4.0
1	A	51	SER	3.9
1	A	115	LYS	3.9
1	B	685	GLN	3.9
1	A	52	LYS	3.9
1	A	666	LYS	3.9
1	A	16	ASN	3.8
1	A	21	LEU	3.8
1	B	47	GLY	3.8
1	A	65	LYS	3.8
1	B	687	ALA	3.7
1	A	24	VAL	3.7
1	B	631	VAL	3.7
1	B	680	LEU	3.6
1	B	659	LEU	3.5
1	A	669	LYS	3.5
1	B	695	THR	3.3
1	B	668	TRP	3.3
1	B	583	HIS	3.3
1	B	715	LYS	3.3
1	A	672	ASP	3.2
1	A	85	VAL	3.2
1	A	116	LEU	3.2
1	A	667	GLU	3.2
1	B	291	GLY	3.2
1	A	596	ILE	3.2
1	A	19	ILE	3.1
1	B	16	ASN	3.1
1	A	694	PHE	3.1
1	B	707	ARG	3.1
1	B	52	LYS	3.0
1	B	604	ASN	3.0
1	B	676	LYS	3.0
1	B	671	VAL	3.0
1	A	113	ASP	2.9
1	B	667	GLU	2.9
1	B	689	VAL	2.9
1	B	580	PHE	2.9
1	A	49	GLN	2.8
1	A	119	VAL	2.8

Continued on next page...

Continued from previous page...

Mol	Chain	Res	Type	RSRZ
1	B	18	THR	2.8
1	B	114	GLY	2.8
1	B	452	LYS	2.8
1	A	693	ARG	2.8
1	A	15	GLN	2.8
1	B	696	ASN	2.8
1	A	388	ALA	2.7
1	A	620	ASN	2.7
1	B	453	ALA	2.7
1	A	27	LEU	2.7
1	A	13	ILE	2.6
1	A	72	ARG	2.6
1	B	600	GLU	2.6
1	A	22	PRO	2.6
1	A	597	SER	2.6
1	B	692	VAL	2.6
1	B	644	ILE	2.6
1	A	132	VAL	2.6
1	A	607	LEU	2.5
1	A	711	LEU	2.5
1	B	53	LYS	2.5
1	B	605	LEU	2.5
1	A	631	VAL	2.5
1	A	129	TYR	2.5
1	B	450	PHE	2.5
1	A	46	SER	2.5
1	B	51	SER	2.5
1	B	519	ARG	2.5
1	B	658	ARG	2.5
1	B	641	GLY	2.4
1	B	669	LYS	2.4
1	B	603	LYS	2.4
1	A	684	LEU	2.4
1	B	513	LEU	2.4
1	B	288	ASN	2.4
1	A	18	THR	2.4
1	B	3	VAL	2.4
1	B	677	GLU	2.4
1	B	384	ILE	2.4
1	B	385	TYR	2.3
1	B	19	ILE	2.3
1	B	582	ALA	2.3

Continued on next page...

Continued from previous page...

Mol	Chain	Res	Type	RSRZ
1	B	711	LEU	2.3
1	B	712	THR	2.3
1	B	581	ASN	2.3
1	B	567	ARG	2.3
1	A	57	ILE	2.3
1	A	665	GLY	2.2
1	B	576	PHE	2.2
1	B	598	ASN	2.2
1	B	46	SER	2.2
1	B	646	ILE	2.2
1	B	454	PHE	2.2
1	A	682	ALA	2.2
1	B	597	SER	2.2
1	A	290	ASN	2.2
1	A	25	TYR	2.2
1	B	113	ASP	2.2
1	A	660	GLU	2.2
1	B	7	PRO	2.2
1	A	470	TYR	2.2
1	B	456	GLU	2.2
1	A	605	LEU	2.2
1	A	687	ALA	2.2
1	A	371	THR	2.1
1	A	670	THR	2.1
1	B	684	LEU	2.1
1	B	286	TRP	2.1
1	A	710	VAL	2.1
1	B	675	GLN	2.1
1	B	382	ILE	2.0
1	A	632	GLU	2.0
1	A	681	SER	2.0
1	A	685	GLN	2.0
1	B	616	ILE	2.0

6.2 Non-standard residues in protein, DNA, RNA chains [i](#)

There are no non-standard protein/DNA/RNA residues in this entry.

6.3 Carbohydrates [i](#)

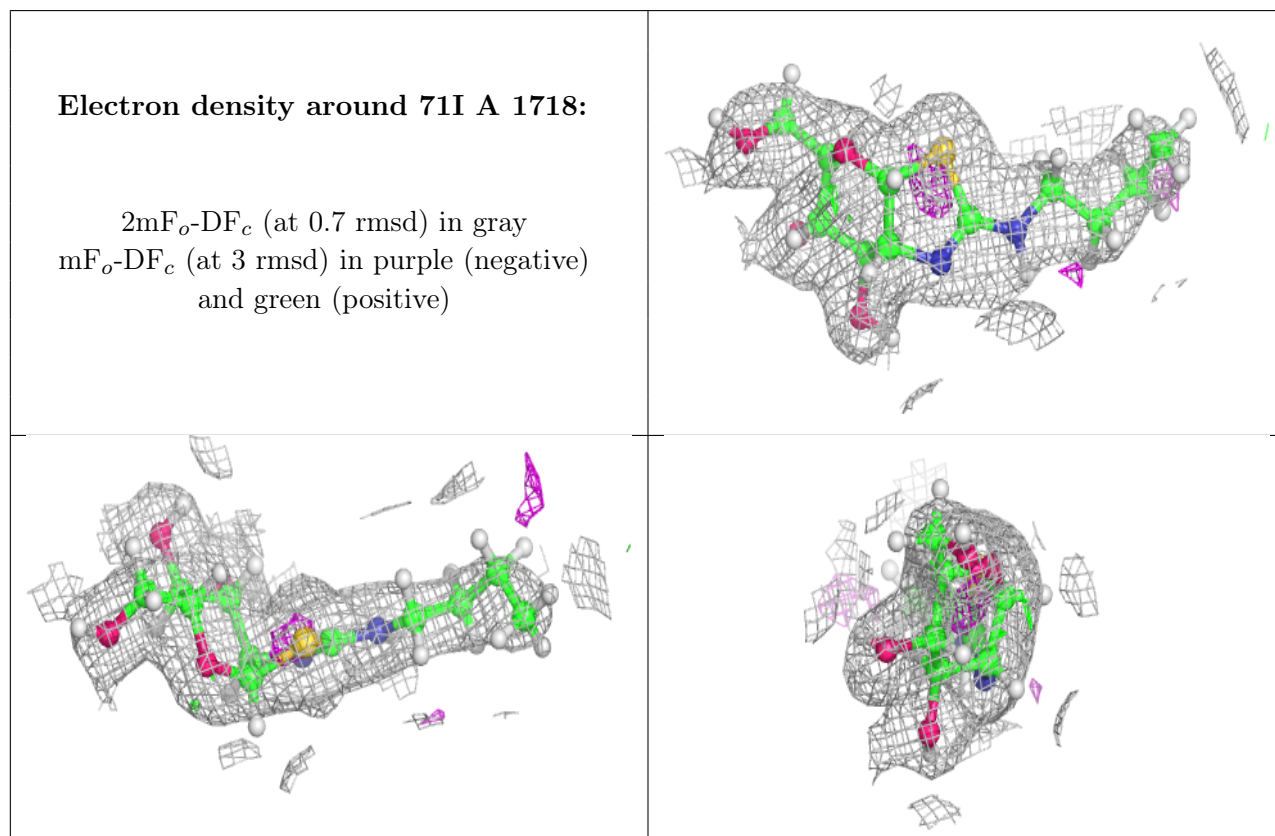
There are no monosaccharides in this entry.

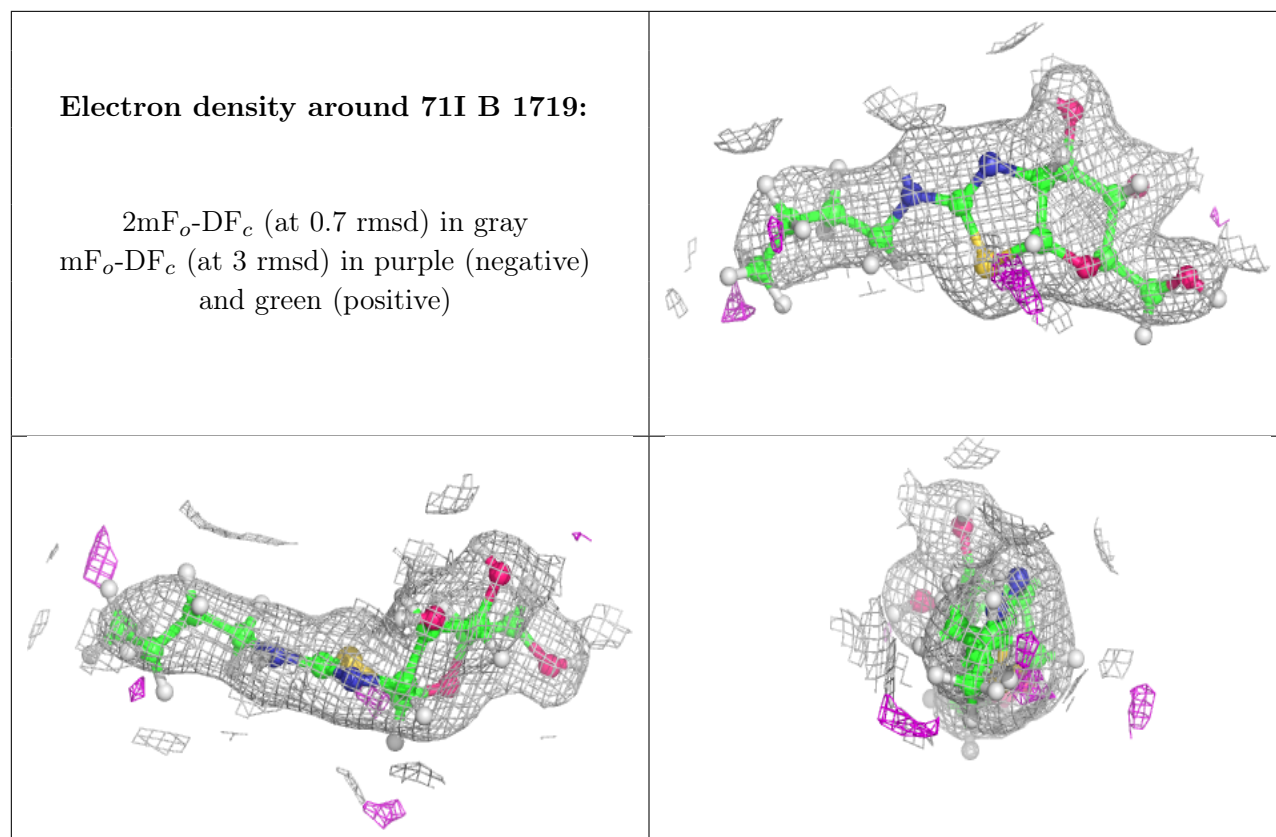
6.4 Ligands [i](#)

In the following table, the Atoms column lists the number of modelled atoms in the group and the number defined in the chemical component dictionary. The B-factors column lists the minimum, median, 95th percentile and maximum values of B factors of atoms in the group. The column labelled 'Q< 0.9' lists the number of atoms with occupancy less than 0.9.

Mol	Type	Chain	Res	Atoms	RSCC	RSR	B-factors(Å ²)	Q<0.9
2	EDO	B	1718	4/4	0.86	0.15	63,76,77,78	0
2	EDO	B	1717	4/4	0.91	0.13	50,60,65,65	0
2	EDO	A	1717	4/4	0.92	0.15	36,43,49,49	0
3	71I	A	1718	18/18	0.95	0.12	31,42,61,61	0
2	EDO	A	1716	4/4	0.96	0.11	41,49,52,52	0
3	71I	B	1719	18/18	0.96	0.10	32,41,52,55	0
4	CA	B	1716	1/1	0.99	0.07	40,40,40,40	0

The following is a graphical depiction of the model fit to experimental electron density of all instances of the Ligand of Interest. In addition, ligands with molecular weight > 250 and outliers as shown on the geometry validation Tables will also be included. Each fit is shown from different orientation to approximate a three-dimensional view.





6.5 Other polymers [i](#)

There are no such residues in this entry.