



# Full wwPDB X-ray Structure Validation Report ⓘ

Jun 22, 2024 – 09:54 AM EDT

PDB ID : 5FAC  
Title : Alanine Racemase from Streptomyces coelicolor A3(2)  
Authors : Tassoni, R.; Pannu, N.S.  
Deposited on : 2015-12-11  
Resolution : 2.80 Å(reported)

This is a Full wwPDB X-ray Structure Validation Report for a publicly released PDB entry.

We welcome your comments at [validation@mail.wwpdb.org](mailto:validation@mail.wwpdb.org)

A user guide is available at

<https://www.wwpdb.org/validation/2017/XrayValidationReportHelp>

with specific help available everywhere you see the ⓘ symbol.

The types of validation reports are described at

<http://www.wwpdb.org/validation/2017/FAQs#types>.

---

The following versions of software and data (see [references ⓘ](#)) were used in the production of this report:

MolProbity : 4.02b-467  
Mogul : 1.8.5 (274361), CSD as541be (2020)  
Xtriage (Phenix) : 1.13  
EDS : 2.37.1  
Percentile statistics : 20191225.v01 (using entries in the PDB archive December 25th 2019)  
Refmac : 5.8.0158  
CCP4 : 7.0.044 (Gargrove)  
Ideal geometry (proteins) : Engh & Huber (2001)  
Ideal geometry (DNA, RNA) : Parkinson et al. (1996)  
Validation Pipeline (wwPDB-VP) : 2.37.1

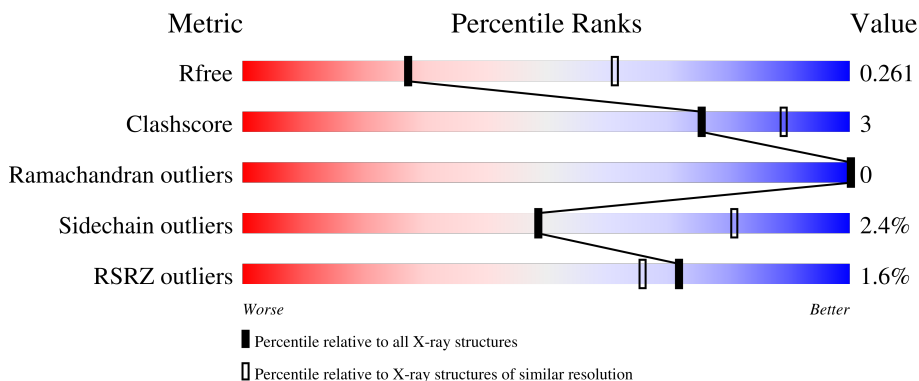
# 1 Overall quality at a glance

The following experimental techniques were used to determine the structure:

*X-RAY DIFFRACTION*

The reported resolution of this entry is 2.80 Å.

Percentile scores (ranging between 0-100) for global validation metrics of the entry are shown in the following graphic. The table shows the number of entries on which the scores are based.



Metric	Whole archive (#Entries)	Similar resolution (#Entries, resolution range(Å))
$R_{free}$	130704	3140 (2.80-2.80)
Clashscore	141614	3569 (2.80-2.80)
Ramachandran outliers	138981	3498 (2.80-2.80)
Sidechain outliers	138945	3500 (2.80-2.80)
RSRZ outliers	127900	3078 (2.80-2.80)

The table below summarises the geometric issues observed across the polymeric chains and their fit to the electron density. The red, orange, yellow and green segments of the lower bar indicate the fraction of residues that contain outliers for  $\geq 3$ , 2, 1 and 0 types of geometric quality criteria respectively. A grey segment represents the fraction of residues that are not modelled. The numeric value for each fraction is indicated below the corresponding segment, with a dot representing fractions  $\leq 5\%$ . The upper red bar (where present) indicates the fraction of residues that have poor fit to the electron density. The numeric value is given above the bar.

Mol	Chain	Length	Quality of chain
1	A	410	 85% 8% • 6%
1	B	410	 84% 9% 7%
1	C	410	 85% 7% • 7%
1	D	410	 83% 9% • 7%

The following table lists non-polymeric compounds, carbohydrate monomers and non-standard

residues in protein, DNA, RNA chains that are outliers for geometric or electron-density-fit criteria:

Mol	Type	Chain	Res	Chirality	Geometry	Clashes	Electron density
3	CL	B	402	-	-	X	-
3	CL	D	402	-	-	X	-

## 2 Entry composition [i](#)

There are 4 unique types of molecules in this entry. The entry contains 11596 atoms, of which 0 are hydrogens and 0 are deuteriums.

In the tables below, the ZeroOcc column contains the number of atoms modelled with zero occupancy, the AltConf column contains the number of residues with at least one atom in alternate conformation and the Trace column contains the number of residues modelled with at most 2 atoms.

- Molecule 1 is a protein called Alanine racemase.

Mol	Chain	Residues	Atoms					ZeroOcc	AltConf	Trace
			Total	C	N	O	S			
1	A	384	2857	1790	528	527	12	0	1	0
1	B	381	2833	1777	522	522	12	0	1	0
1	C	383	2838	1779	521	526	12	0	0	0
1	D	381	2833	1777	522	522	12	0	1	0

There are 76 discrepancies between the modelled and reference sequences:

Chain	Residue	Modelled	Actual	Comment	Reference
A	-18	MET	-	initiating methionine	UNP O86786
A	-17	GLY	-	expression tag	UNP O86786
A	-16	SER	-	expression tag	UNP O86786
A	-15	HIS	-	expression tag	UNP O86786
A	-14	HIS	-	expression tag	UNP O86786
A	-13	HIS	-	expression tag	UNP O86786
A	-12	HIS	-	expression tag	UNP O86786
A	-11	HIS	-	expression tag	UNP O86786
A	-10	HIS	-	expression tag	UNP O86786
A	-9	SER	-	expression tag	UNP O86786
A	-8	SER	-	expression tag	UNP O86786
A	-7	GLY	-	expression tag	UNP O86786
A	-6	LEU	-	expression tag	UNP O86786
A	-5	VAL	-	expression tag	UNP O86786
A	-4	PRO	-	expression tag	UNP O86786
A	-3	ARG	-	expression tag	UNP O86786
A	-2	GLY	-	expression tag	UNP O86786
A	-1	SER	-	expression tag	UNP O86786
A	0	HIS	-	expression tag	UNP O86786
B	-18	MET	-	initiating methionine	UNP O86786
B	-17	GLY	-	expression tag	UNP O86786

*Continued on next page...*

*Continued from previous page...*

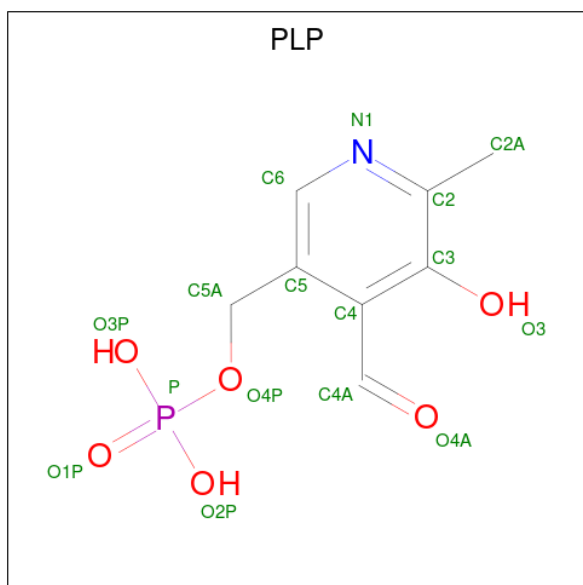
Chain	Residue	Modelled	Actual	Comment	Reference
B	-16	SER	-	expression tag	UNP O86786
B	-15	HIS	-	expression tag	UNP O86786
B	-14	HIS	-	expression tag	UNP O86786
B	-13	HIS	-	expression tag	UNP O86786
B	-12	HIS	-	expression tag	UNP O86786
B	-11	HIS	-	expression tag	UNP O86786
B	-10	HIS	-	expression tag	UNP O86786
B	-9	SER	-	expression tag	UNP O86786
B	-8	SER	-	expression tag	UNP O86786
B	-7	GLY	-	expression tag	UNP O86786
B	-6	LEU	-	expression tag	UNP O86786
B	-5	VAL	-	expression tag	UNP O86786
B	-4	PRO	-	expression tag	UNP O86786
B	-3	ARG	-	expression tag	UNP O86786
B	-2	GLY	-	expression tag	UNP O86786
B	-1	SER	-	expression tag	UNP O86786
B	0	HIS	-	expression tag	UNP O86786
C	-18	MET	-	initiating methionine	UNP O86786
C	-17	GLY	-	expression tag	UNP O86786
C	-16	SER	-	expression tag	UNP O86786
C	-15	HIS	-	expression tag	UNP O86786
C	-14	HIS	-	expression tag	UNP O86786
C	-13	HIS	-	expression tag	UNP O86786
C	-12	HIS	-	expression tag	UNP O86786
C	-11	HIS	-	expression tag	UNP O86786
C	-10	HIS	-	expression tag	UNP O86786
C	-9	SER	-	expression tag	UNP O86786
C	-8	SER	-	expression tag	UNP O86786
C	-7	GLY	-	expression tag	UNP O86786
C	-6	LEU	-	expression tag	UNP O86786
C	-5	VAL	-	expression tag	UNP O86786
C	-4	PRO	-	expression tag	UNP O86786
C	-3	ARG	-	expression tag	UNP O86786
C	-2	GLY	-	expression tag	UNP O86786
C	-1	SER	-	expression tag	UNP O86786
C	0	HIS	-	expression tag	UNP O86786
D	-18	MET	-	initiating methionine	UNP O86786
D	-17	GLY	-	expression tag	UNP O86786
D	-16	SER	-	expression tag	UNP O86786
D	-15	HIS	-	expression tag	UNP O86786
D	-14	HIS	-	expression tag	UNP O86786
D	-13	HIS	-	expression tag	UNP O86786

*Continued on next page...*

Continued from previous page...

Chain	Residue	Modelled	Actual	Comment	Reference
D	-12	HIS	-	expression tag	UNP O86786
D	-11	HIS	-	expression tag	UNP O86786
D	-10	HIS	-	expression tag	UNP O86786
D	-9	SER	-	expression tag	UNP O86786
D	-8	SER	-	expression tag	UNP O86786
D	-7	GLY	-	expression tag	UNP O86786
D	-6	LEU	-	expression tag	UNP O86786
D	-5	VAL	-	expression tag	UNP O86786
D	-4	PRO	-	expression tag	UNP O86786
D	-3	ARG	-	expression tag	UNP O86786
D	-2	GLY	-	expression tag	UNP O86786
D	-1	SER	-	expression tag	UNP O86786
D	0	HIS	-	expression tag	UNP O86786

- Molecule 2 is PYRIDOXAL-5'-PHOSPHATE (three-letter code: PLP) (formula: C<sub>8</sub>H<sub>10</sub>NO<sub>6</sub>P).



Mol	Chain	Residues	Atoms					ZeroOcc	AltConf
			Total	C	N	O	P		
2	A	1	Total	C	N	O	P	0	0
			15	8	1	5	1		
2	B	1	Total	C	N	O	P	0	0
			15	8	1	5	1		
2	C	1	Total	C	N	O	P	0	0
			15	8	1	5	1		
2	D	1	Total	C	N	O	P	0	0
			15	8	1	5	1		

- Molecule 3 is CHLORIDE ION (three-letter code: CL) (formula: Cl).

Mol	Chain	Residues	Atoms	ZeroOcc	AltConf
3	A	1	Total Cl 1 1	0	0
3	B	1	Total Cl 1 1	0	0
3	C	1	Total Cl 1 1	0	0
3	D	1	Total Cl 1 1	0	0

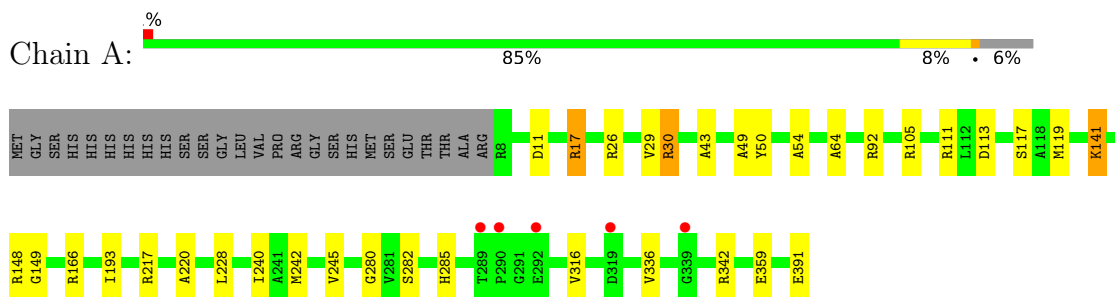
- Molecule 4 is water.

Mol	Chain	Residues	Atoms	ZeroOcc	AltConf
4	A	53	Total O 53 53	0	0
4	B	43	Total O 43 43	0	0
4	C	32	Total O 32 32	0	0
4	D	43	Total O 43 43	0	0

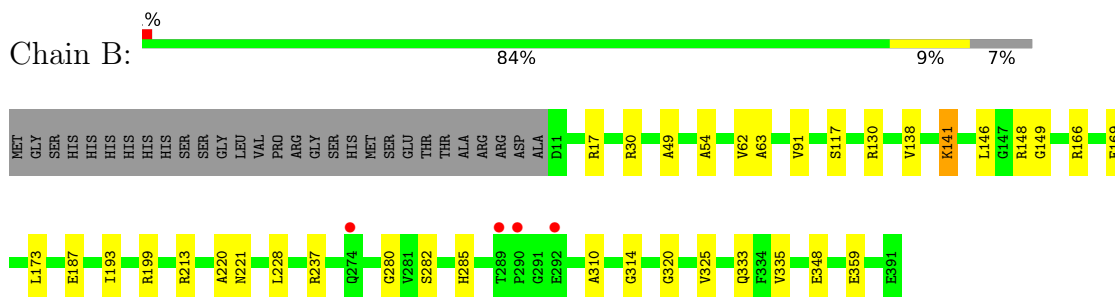
### 3 Residue-property plots [i](#)

These plots are drawn for all protein, RNA, DNA and oligosaccharide chains in the entry. The first graphic for a chain summarises the proportions of the various outlier classes displayed in the second graphic. The second graphic shows the sequence view annotated by issues in geometry and electron density. Residues are color-coded according to the number of geometric quality criteria for which they contain at least one outlier: green = 0, yellow = 1, orange = 2 and red = 3 or more. A red dot above a residue indicates a poor fit to the electron density ( $RSRZ > 2$ ). Stretches of 2 or more consecutive residues without any outlier are shown as a green connector. Residues present in the sample, but not in the model, are shown in grey.

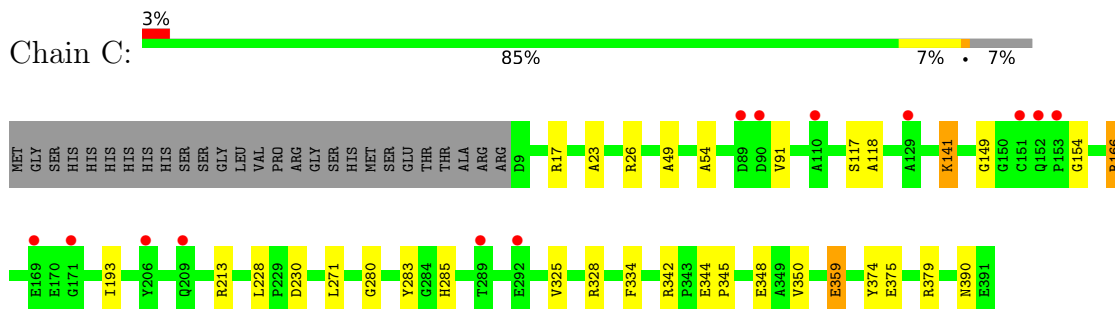
- Molecule 1: Alanine racemase



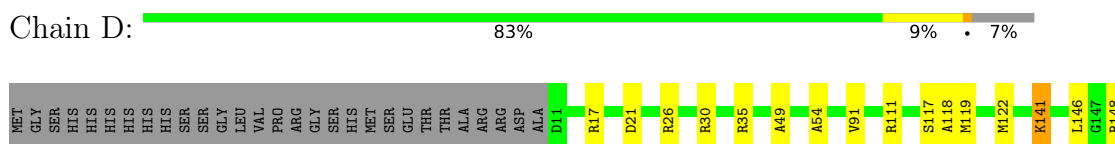
- Molecule 1: Alanine racemase



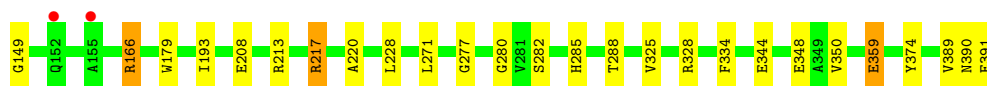
- Molecule 1: Alanine racemase



- Molecule 1: Alanine racemase







## 4 Data and refinement statistics

Property	Value	Source
Space group	P 1 21 1	Depositor
Cell constants a, b, c, $\alpha$ , $\beta$ , $\gamma$	78.96Å 87.17Å 109.63Å 90.00° 102.26° 90.00°	Depositor
Resolution (Å)	47.78 – 2.80 47.78 – 2.80	Depositor EDS
% Data completeness (in resolution range)	96.0 (47.78-2.80) 96.0 (47.78-2.80)	Depositor EDS
$R_{merge}$	0.25	Depositor
$R_{sym}$	(Not available)	Depositor
$\langle I/\sigma(I) \rangle$ <sup>1</sup>	1.72 (at 2.81Å)	Xtrriage
Refinement program	REFMAC 5.8.0135	Depositor
R, $R_{free}$	0.208 , 0.259 0.213 , 0.261	Depositor DCC
$R_{free}$ test set	1693 reflections (4.90%)	wwPDB-VP
Wilson B-factor (Å <sup>2</sup> )	38.9	Xtrriage
Anisotropy	0.177	Xtrriage
Bulk solvent $k_{sol}$ (e/Å <sup>3</sup> ), $B_{sol}$ (Å <sup>2</sup> )	0.36 , 45.7	EDS
L-test for twinning <sup>2</sup>	$\langle  L  \rangle = 0.48$ , $\langle L^2 \rangle = 0.31$	Xtrriage
Estimated twinning fraction	No twinning to report.	Xtrriage
$F_o, F_c$ correlation	0.92	EDS
Total number of atoms	11596	wwPDB-VP
Average B, all atoms (Å <sup>2</sup> )	45.0	wwPDB-VP

Xtrriage's analysis on translational NCS is as follows: *The analyses of the Patterson function reveals a significant off-origin peak that is 37.56 % of the origin peak, indicating pseudo-translational symmetry. The chance of finding a peak of this or larger height randomly in a structure without pseudo-translational symmetry is equal to 4.2081e-04. The detected translational NCS is most likely also responsible for the elevated intensity ratio.*

<sup>1</sup>Intensities estimated from amplitudes.

<sup>2</sup>Theoretical values of  $\langle |L| \rangle$ ,  $\langle L^2 \rangle$  for acentric reflections are 0.5, 0.333 respectively for untwinned datasets, and 0.375, 0.2 for perfectly twinned datasets.

## 5 Model quality [i](#)

### 5.1 Standard geometry [i](#)

Bond lengths and bond angles in the following residue types are not validated in this section: KCX, PLP, CL

The Z score for a bond length (or angle) is the number of standard deviations the observed value is removed from the expected value. A bond length (or angle) with  $|Z| > 5$  is considered an outlier worth inspection. RMSZ is the root-mean-square of all Z scores of the bond lengths (or angles).

Mol	Chain	Bond lengths		Bond angles	
		RMSZ	# Z  >5	RMSZ	# Z  >5
1	A	0.62	0/2916	0.88	12/3981 (0.3%)
1	B	0.62	0/2892	0.83	5/3949 (0.1%)
1	C	0.61	0/2894	0.81	3/3953 (0.1%)
1	D	0.63	1/2892 (0.0%)	0.83	5/3949 (0.1%)
All	All	0.62	1/11594 (0.0%)	0.84	25/15832 (0.2%)

All (1) bond length outliers are listed below:

Mol	Chain	Res	Type	Atoms	Z	Observed(Å)	Ideal(Å)
1	D	344	GLU	CB-CG	5.57	1.62	1.52

All (25) bond angle outliers are listed below:

Mol	Chain	Res	Type	Atoms	Z	Observed(°)	Ideal(°)
1	B	199	ARG	NE-CZ-NH1	9.43	125.02	120.30
1	A	105	ARG	NE-CZ-NH1	7.59	124.10	120.30
1	A	17	ARG	NE-CZ-NH1	7.28	123.94	120.30
1	D	328	ARG	NE-CZ-NH1	7.28	123.94	120.30
1	A	111	ARG	CG-CD-NE	7.26	127.05	111.80
1	D	111	ARG	NE-CZ-NH1	7.04	123.82	120.30
1	A	217	ARG	NE-CZ-NH1	-6.86	116.87	120.30
1	D	166	ARG	NE-CZ-NH1	6.63	123.61	120.30
1	A	342	ARG	NE-CZ-NH1	6.62	123.61	120.30
1	A	17	ARG	NE-CZ-NH2	-6.20	117.20	120.30
1	A	105	ARG	NE-CZ-NH2	-6.14	117.23	120.30
1	A	217	ARG	NE-CZ-NH2	6.14	123.37	120.30
1	C	342	ARG	NE-CZ-NH1	5.78	123.19	120.30
1	A	149	GLY	N-CA-C	5.77	127.53	113.10
1	A	119	MET	CG-SD-CE	-5.59	91.26	100.20
1	A	220	ALA	N-CA-C	5.56	126.02	111.00

*Continued on next page...*

Continued from previous page...

Mol	Chain	Res	Type	Atoms	Z	Observed(°)	Ideal(°)
1	B	130	ARG	NE-CZ-NH1	5.41	123.01	120.30
1	D	220	ALA	N-CA-C	5.33	125.39	111.00
1	B	220	ALA	N-CA-C	5.23	125.12	111.00
1	C	166	ARG	NE-CZ-NH1	5.11	122.86	120.30
1	A	30	ARG	NE-CZ-NH2	-5.08	117.76	120.30
1	B	237	ARG	NE-CZ-NH1	5.07	122.83	120.30
1	C	328	ARG	NE-CZ-NH2	5.07	122.83	120.30
1	B	148	ARG	NE-CZ-NH1	5.06	122.83	120.30
1	D	30	ARG	NE-CZ-NH2	-5.06	117.77	120.30

There are no chirality outliers.

There are no planarity outliers.

## 5.2 Too-close contacts

In the following table, the Non-H and H(model) columns list the number of non-hydrogen atoms and hydrogen atoms in the chain respectively. The H(added) column lists the number of hydrogen atoms added and optimized by MolProbity. The Clashes column lists the number of clashes within the asymmetric unit, whereas Symm-Clashes lists symmetry-related clashes.

Mol	Chain	Non-H	H(model)	H(added)	Clashes	Symm-Clashes
1	A	2857	0	2816	19	0
1	B	2833	0	2794	17	0
1	C	2838	0	2790	17	0
1	D	2833	0	2794	23	0
2	A	15	0	6	1	0
2	B	15	0	6	1	0
2	C	15	0	6	1	0
2	D	15	0	6	1	0
3	A	1	0	0	0	0
3	B	1	0	0	2	0
3	C	1	0	0	1	0
3	D	1	0	0	2	0
4	A	53	0	0	1	0
4	B	43	0	0	2	0
4	C	32	0	0	1	0
4	D	43	0	0	3	0
All	All	11596	0	11218	70	0

The all-atom clashscore is defined as the number of clashes found per 1000 atoms (including hydrogen atoms). The all-atom clashscore for this structure is 3.

All (70) close contacts within the same asymmetric unit are listed below, sorted by their clash magnitude.

Atom-1	Atom-2	Interatomic distance (Å)	Clash overlap (Å)
1:C:149:GLY:O	3:C:402:CL:CL	2.22	0.95
1:A:92:ARG:NH1	1:A:113:ASP:OD1	2.22	0.72
1:A:29:VAL:HG21	1:A:64:ALA:HB3	1.73	0.70
1:D:141:KCX:HG2	1:D:179:TRP:CE2	2.26	0.70
1:B:149:GLY:O	3:B:402:CL:CL	2.47	0.69
1:D:149:GLY:O	3:D:402:CL:CL	2.49	0.67
1:A:29:VAL:CG2	1:A:64:ALA:HB3	2.31	0.60
1:D:217:ARG:NH1	4:D:501:HOH:O	2.12	0.60
1:D:141:KCX:HG2	1:D:179:TRP:CZ2	2.37	0.59
1:D:119:MET:HE2	1:D:122:MET:HB3	1.88	0.55
1:C:26:ARG:NH2	1:C:390:ASN:O	2.40	0.55
1:A:43:ALA:HA	1:A:242:MET:HE3	1.87	0.55
1:B:310:ALA:O	1:B:325:VAL:HG11	2.07	0.55
1:D:17:ARG:NH2	1:D:348:GLU:OE2	2.40	0.55
1:B:17:ARG:NH2	1:B:348:GLU:OE2	2.41	0.54
1:D:21:ASP:HA	1:D:389:VAL:HG22	1.90	0.53
1:D:208:GLU:OE2	1:D:217:ARG:NH2	2.42	0.53
1:D:277:GLY:O	4:D:502:HOH:O	2.18	0.53
1:B:30:ARG:NH1	4:B:502:HOH:O	2.43	0.52
1:C:23:ALA:HA	1:C:26:ARG:NH1	2.24	0.52
1:D:17:ARG:NH1	4:D:503:HOH:O	2.43	0.51
1:D:325:VAL:HG22	1:D:334:PHE:CD2	2.46	0.50
1:D:374:TYR:OH	2:D:401:PLP:O3P	2.27	0.50
1:C:17:ARG:NH2	1:C:348:GLU:OE2	2.42	0.49
1:A:29:VAL:HG12	1:A:242:MET:HE2	1.94	0.49
1:B:146:LEU:HB3	3:B:402:CL:CL	2.50	0.49
1:D:26:ARG:HH12	1:D:391:GLU:HB3	1.78	0.49
1:B:320:GLY:N	4:B:501:HOH:O	2.38	0.49
1:C:325:VAL:HG22	1:C:334:PHE:CD2	2.48	0.48
1:D:146:LEU:HB3	3:D:402:CL:CL	2.50	0.48
1:D:49:ALA:HB2	1:D:54:ALA:HA	1.96	0.47
1:A:148:ARG:NH1	1:B:333:GLN:OE1	2.41	0.47
1:C:271:LEU:HD11	1:D:118:ALA:HB2	1.96	0.47
1:C:49:ALA:HB2	1:C:54:ALA:HA	1.98	0.46
1:B:49:ALA:HB2	1:B:54:ALA:HA	1.98	0.46
1:D:117:SER:HB3	1:D:141:KCX:HB2	1.98	0.46
1:A:29:VAL:CG2	1:A:64:ALA:CB	2.94	0.45
1:D:35[B]:ARG:HA	1:D:35[B]:ARG:HD2	1.68	0.45
1:A:30:ARG:NH1	4:A:503:HOH:O	2.49	0.45
1:D:280:GLY:HA3	1:D:285:HIS:CD2	2.52	0.45

*Continued on next page...*

Continued from previous page...

Atom-1	Atom-2	Interatomic distance (Å)	Clash overlap (Å)
1:B:62:VAL:HG23	1:B:63:ALA:N	2.32	0.44
1:A:49:ALA:HB2	1:A:54:ALA:HA	1.98	0.44
1:B:221:ASN:HB2	2:B:401:PLP:O3P	2.16	0.44
1:C:118:ALA:HB2	1:D:271:LEU:HD11	2.00	0.44
1:C:280:GLY:HA3	1:C:285:HIS:CD2	2.52	0.44
1:C:283:TYR:CZ	1:D:148:ARG:NH2	2.86	0.44
1:B:280:GLY:HA3	1:B:285:HIS:CD2	2.53	0.43
1:A:50:TYR:OH	2:A:401:PLP:H5A1	2.18	0.43
1:A:280:GLY:HA3	1:A:285:HIS:CD2	2.54	0.43
1:B:314:GLY:N	1:B:325:VAL:HG12	2.34	0.43
1:C:117:SER:HB3	1:C:141:KCX:HB2	2.01	0.43
1:A:117:SER:HB3	1:A:141:KCX:HB2	2.00	0.42
1:A:193:ILE:HG21	1:A:228:LEU:HD11	2.01	0.42
1:B:117:SER:HB3	1:B:141:KCX:HB2	2.01	0.42
1:C:154:GLY:HA2	4:C:530:HOH:O	2.18	0.42
1:D:193:ILE:HG21	1:D:228:LEU:HD11	2.01	0.42
1:A:148:ARG:HG2	1:B:335:VAL:CG2	2.49	0.42
1:B:138:VAL:HG22	1:B:173:LEU:HD13	2.02	0.42
1:C:193:ILE:HG21	1:C:228:LEU:HD11	2.02	0.42
1:C:374:TYR:OH	2:C:401:PLP:O1P	2.26	0.42
1:D:350:VAL:HG11	1:D:359:GLU:HG2	2.02	0.42
1:A:240:ILE:HG13	1:A:245:VAL:HG23	2.02	0.41
1:C:344:GLU:HG2	1:C:345:PRO:O	2.19	0.41
1:C:350:VAL:HG11	1:C:359:GLU:HG2	2.02	0.41
1:A:316:VAL:CG1	1:A:336:VAL:HG11	2.51	0.41
1:B:193:ILE:HG21	1:B:228:LEU:HD11	2.03	0.41
1:C:375:GLU:HG2	1:C:379:ARG:HD3	2.02	0.41
1:A:26:ARG:HA	1:A:29:VAL:HG22	2.03	0.40
1:A:29:VAL:HG12	1:A:242:MET:CE	2.51	0.40
1:A:148:ARG:HG2	1:B:335:VAL:HG23	2.04	0.40

There are no symmetry-related clashes.

## 5.3 Torsion angles [i](#)

### 5.3.1 Protein backbone [i](#)

In the following table, the Percentiles column shows the percent Ramachandran outliers of the chain as a percentile score with respect to all X-ray entries followed by that with respect to entries of similar resolution.

The Analysed column shows the number of residues for which the backbone conformation was analysed, and the total number of residues.

Mol	Chain	Analysed	Favoured	Allowed	Outliers	Percentiles	
1	A	382/410 (93%)	366 (96%)	16 (4%)	0	100	100
1	B	379/410 (92%)	364 (96%)	15 (4%)	0	100	100
1	C	380/410 (93%)	364 (96%)	16 (4%)	0	100	100
1	D	379/410 (92%)	364 (96%)	15 (4%)	0	100	100
All	All	1520/1640 (93%)	1458 (96%)	62 (4%)	0	100	100

There are no Ramachandran outliers to report.

### 5.3.2 Protein sidechains [i](#)

In the following table, the Percentiles column shows the percent sidechain outliers of the chain as a percentile score with respect to all X-ray entries followed by that with respect to entries of similar resolution.

The Analysed column shows the number of residues for which the sidechain conformation was analysed, and the total number of residues.

Mol	Chain	Analysed	Rotameric	Outliers	Percentiles	
1	A	276/297 (93%)	270 (98%)	6 (2%)	52	83
1	B	274/297 (92%)	267 (97%)	7 (3%)	46	79
1	C	274/297 (92%)	269 (98%)	5 (2%)	59	86
1	D	274/297 (92%)	266 (97%)	8 (3%)	42	76
All	All	1098/1188 (92%)	1072 (98%)	26 (2%)	49	81

All (26) residues with a non-rotameric sidechain are listed below:

Mol	Chain	Res	Type
1	A	11	ASP
1	A	17	ARG
1	A	166	ARG
1	A	282	SER
1	A	359	GLU
1	A	391	GLU
1	B	91	VAL
1	B	166	ARG
1	B	169	GLU
1	B	187	GLU

*Continued on next page...*

*Continued from previous page...*

Mol	Chain	Res	Type
1	B	213	ARG
1	B	282	SER
1	B	359	GLU
1	C	91	VAL
1	C	166	ARG
1	C	213	ARG
1	C	230	ASP
1	C	359	GLU
1	D	91	VAL
1	D	166	ARG
1	D	213	ARG
1	D	217	ARG
1	D	282	SER
1	D	288	THR
1	D	359	GLU
1	D	390	ASN

Sometimes sidechains can be flipped to improve hydrogen bonding and reduce clashes. All (3) such sidechains are listed below:

Mol	Chain	Res	Type
1	A	181	HIS
1	A	190	HIS
1	B	190	HIS

### 5.3.3 RNA [i](#)

There are no RNA molecules in this entry.

## 5.4 Non-standard residues in protein, DNA, RNA chains [i](#)

4 non-standard protein/DNA/RNA residues are modelled in this entry.

In the following table, the Counts columns list the number of bonds (or angles) for which Mogul statistics could be retrieved, the number of bonds (or angles) that are observed in the model and the number of bonds (or angles) that are defined in the Chemical Component Dictionary. The Link column lists molecule types, if any, to which the group is linked. The Z score for a bond length (or angle) is the number of standard deviations the observed value is removed from the expected value. A bond length (or angle) with  $|Z| > 2$  is considered an outlier worth inspection. RMSZ is the root-mean-square of all Z scores of the bond lengths (or angles).



Mol	Type	Chain	Res	Link	Bond lengths			Bond angles		
					Counts	RMSZ	# Z  > 2	Counts	RMSZ	# Z  > 2
1	KCX	B	141	1	9,11,12	2.44	1 (11%)	5,12,14	1.79	3 (60%)
1	KCX	A	141	1	9,11,12	0.62	0	5,12,14	2.21	3 (60%)
1	KCX	D	141	1	9,11,12	2.31	1 (11%)	5,12,14	2.04	2 (40%)
1	KCX	C	141	1	9,11,12	0.85	0	5,12,14	1.77	1 (20%)

In the following table, the Chirals column lists the number of chiral outliers, the number of chiral centers analysed, the number of these observed in the model and the number defined in the Chemical Component Dictionary. Similar counts are reported in the Torsion and Rings columns. '-' means no outliers of that kind were identified.

Mol	Type	Chain	Res	Link	Chirals	Torsions	Rings
1	KCX	B	141	1	-	1/9/10/12	-
1	KCX	A	141	1	-	1/9/10/12	-
1	KCX	D	141	1	-	5/9/10/12	-
1	KCX	C	141	1	-	2/9/10/12	-

All (2) bond length outliers are listed below:

Mol	Chain	Res	Type	Atoms	Z	Observed(Å)	Ideal(Å)
1	B	141	KCX	OQ1-CX	7.16	1.34	1.21
1	D	141	KCX	OQ1-CX	6.44	1.33	1.21

All (9) bond angle outliers are listed below:

Mol	Chain	Res	Type	Atoms	Z	Observed(°)	Ideal(°)
1	C	141	KCX	CE-NZ-CX	3.59	127.65	121.89
1	D	141	KCX	CE-NZ-CX	3.57	127.61	121.89
1	A	141	KCX	OQ1-CX-NZ	-3.31	119.83	124.96
1	A	141	KCX	CE-NZ-CX	2.98	126.67	121.89
1	D	141	KCX	OQ1-CX-NZ	-2.79	120.64	124.96
1	B	141	KCX	CE-NZ-CX	2.71	126.24	121.89
1	A	141	KCX	CD-CE-NZ	2.12	118.28	112.21
1	B	141	KCX	OQ1-CX-NZ	2.12	128.24	124.96
1	B	141	KCX	CD-CE-NZ	2.01	117.95	112.21

There are no chirality outliers.

All (9) torsion outliers are listed below:

Mol	Chain	Res	Type	Atoms
1	C	141	KCX	CD-CE-NZ-CX

*Continued on next page...*

Continued from previous page...

Mol	Chain	Res	Type	Atoms
1	D	141	KCX	C-CA-CB-CG
1	A	141	KCX	CG-CD-CE-NZ
1	B	141	KCX	CG-CD-CE-NZ
1	C	141	KCX	CG-CD-CE-NZ
1	D	141	KCX	CG-CD-CE-NZ
1	D	141	KCX	N-CA-CB-CG
1	D	141	KCX	CE-CD-CG-CB
1	D	141	KCX	CA-CB-CG-CD

There are no ring outliers.

4 monomers are involved in 6 short contacts:

Mol	Chain	Res	Type	Clashes	Symm-Clashes
1	B	141	KCX	1	0
1	A	141	KCX	1	0
1	D	141	KCX	3	0
1	C	141	KCX	1	0

## 5.5 Carbohydrates [i](#)

There are no monosaccharides in this entry.

## 5.6 Ligand geometry [i](#)

Of 8 ligands modelled in this entry, 4 are monoatomic - leaving 4 for Mogul analysis.

In the following table, the Counts columns list the number of bonds (or angles) for which Mogul statistics could be retrieved, the number of bonds (or angles) that are observed in the model and the number of bonds (or angles) that are defined in the Chemical Component Dictionary. The Link column lists molecule types, if any, to which the group is linked. The Z score for a bond length (or angle) is the number of standard deviations the observed value is removed from the expected value. A bond length (or angle) with  $|Z| > 2$  is considered an outlier worth inspection. RMSZ is the root-mean-square of all Z scores of the bond lengths (or angles).

Mol	Type	Chain	Res	Link	Bond lengths			Bond angles		
					Counts	RMSZ	# Z  > 2	Counts	RMSZ	# Z  > 2
2	PLP	C	401	1	15,15,16	3.84	4 (26%)	20,22,23	2.07	6 (30%)
2	PLP	D	401	1	15,15,16	3.76	3 (20%)	20,22,23	1.74	5 (25%)
2	PLP	B	401	1	15,15,16	3.40	3 (20%)	20,22,23	1.72	6 (30%)
2	PLP	A	401	1	15,15,16	3.76	4 (26%)	20,22,23	1.85	4 (20%)

In the following table, the Chirals column lists the number of chiral outliers, the number of chiral centers analysed, the number of these observed in the model and the number defined in the Chemical Component Dictionary. Similar counts are reported in the Torsion and Rings columns. '-' means no outliers of that kind were identified.

Mol	Type	Chain	Res	Link	Chirals	Torsions	Rings
2	PLP	C	401	1	-	0/6/6/8	0/1/1/1
2	PLP	D	401	1	-	0/6/6/8	0/1/1/1
2	PLP	B	401	1	-	5/6/6/8	0/1/1/1
2	PLP	A	401	1	-	0/6/6/8	0/1/1/1

All (14) bond length outliers are listed below:

Mol	Chain	Res	Type	Atoms	Z	Observed(Å)	Ideal(Å)
2	C	401	PLP	C5-C4	10.93	1.52	1.40
2	B	401	PLP	C5-C4	10.51	1.52	1.40
2	D	401	PLP	C5-C4	10.27	1.51	1.40
2	A	401	PLP	C5-C4	9.87	1.51	1.40
2	A	401	PLP	C3-C2	9.09	1.50	1.40
2	C	401	PLP	C3-C2	8.47	1.49	1.40
2	D	401	PLP	C3-C2	8.46	1.49	1.40
2	B	401	PLP	C3-C2	5.87	1.46	1.40
2	D	401	PLP	C3-C4	4.94	1.50	1.40
2	A	401	PLP	C3-C4	4.83	1.50	1.40
2	B	401	PLP	C3-C4	4.56	1.49	1.40
2	C	401	PLP	C3-C4	4.47	1.49	1.40
2	C	401	PLP	C6-C5	2.05	1.42	1.37
2	A	401	PLP	C6-C5	2.01	1.41	1.37

All (21) bond angle outliers are listed below:

Mol	Chain	Res	Type	Atoms	Z	Observed(°)	Ideal(°)
2	C	401	PLP	C4A-C4-C5	5.51	126.61	120.94
2	A	401	PLP	C3-C4-C5	-5.07	113.26	118.74
2	C	401	PLP	C3-C4-C5	-4.56	113.82	118.74
2	D	401	PLP	C4A-C4-C5	4.28	125.34	120.94
2	A	401	PLP	C6-C5-C4	3.62	121.01	118.16
2	B	401	PLP	C4A-C4-C5	3.25	124.28	120.94
2	A	401	PLP	C4A-C4-C5	3.21	124.24	120.94
2	D	401	PLP	C3-C4-C5	-3.08	115.41	118.74
2	B	401	PLP	O4P-C5A-C5	3.03	115.12	109.35
2	B	401	PLP	C6-N1-C2	2.70	124.16	119.17
2	B	401	PLP	C3-C4-C5	-2.66	115.86	118.74
2	A	401	PLP	O4P-C5A-C5	2.59	114.28	109.35

*Continued on next page...*

Continued from previous page...

Mol	Chain	Res	Type	Atoms	Z	Observed(°)	Ideal(°)
2	C	401	PLP	O4P-C5A-C5	2.58	114.26	109.35
2	C	401	PLP	O3P-P-O2P	2.38	116.74	107.64
2	D	401	PLP	C6-N1-C2	2.32	123.47	119.17
2	C	401	PLP	O3P-P-O4P	-2.31	100.59	106.73
2	B	401	PLP	O2P-P-O4P	-2.29	100.64	106.73
2	D	401	PLP	O4P-C5A-C5	2.26	113.66	109.35
2	B	401	PLP	O3-C3-C4	2.21	123.92	118.10
2	C	401	PLP	C6-C5-C4	2.14	119.84	118.16
2	D	401	PLP	O3P-P-O2P	2.12	115.75	107.64

There are no chirality outliers.

All (5) torsion outliers are listed below:

Mol	Chain	Res	Type	Atoms
2	B	401	PLP	C5A-O4P-P-O2P
2	B	401	PLP	C5A-O4P-P-O3P
2	B	401	PLP	C5A-O4P-P-O1P
2	B	401	PLP	C6-C5-C5A-O4P
2	B	401	PLP	C4-C5-C5A-O4P

There are no ring outliers.

4 monomers are involved in 4 short contacts:

Mol	Chain	Res	Type	Clashes	Symm-Clashes
2	C	401	PLP	1	0
2	D	401	PLP	1	0
2	B	401	PLP	1	0
2	A	401	PLP	1	0

## 5.7 Other polymers [i](#)

There are no such residues in this entry.

## 5.8 Polymer linkage issues [i](#)

There are no chain breaks in this entry.

## 6 Fit of model and data [i](#)

### 6.1 Protein, DNA and RNA chains [i](#)

In the following table, the column labelled ‘#RSRZ > 2’ contains the number (and percentage) of RSRZ outliers, followed by percent RSRZ outliers for the chain as percentile scores relative to all X-ray entries and entries of similar resolution. The OWAB column contains the minimum, median, 95<sup>th</sup> percentile and maximum values of the occupancy-weighted average B-factor per residue. The column labelled ‘Q < 0.9’ lists the number of (and percentage) of residues with an average occupancy less than 0.9.

Mol	Chain	Analysed	<RSRZ>	#RSRZ>2	OWAB(Å <sup>2</sup> )	Q<0.9
1	A	383/410 (93%)	-0.06	5 (1%) 77 72	21, 39, 77, 110	0
1	B	380/410 (92%)	-0.12	4 (1%) 80 75	19, 40, 73, 110	0
1	C	382/410 (93%)	0.06	13 (3%) 45 35	18, 46, 83, 100	0
1	D	380/410 (92%)	-0.09	2 (0%) 91 88	18, 41, 72, 83	0
All	All	1525/1640 (92%)	-0.05	24 (1%) 72 66	18, 42, 78, 110	0

All (24) RSRZ outliers are listed below:

Mol	Chain	Res	Type	RSRZ
1	C	209	GLN	3.0
1	C	151	CYS	2.9
1	A	339	GLY	2.9
1	B	292	GLU	2.9
1	B	290	PRO	2.6
1	A	289	THR	2.5
1	C	289	THR	2.5
1	D	155	ALA	2.5
1	C	292	GLU	2.5
1	C	89	ASP	2.4
1	A	319	ASP	2.4
1	C	110	ALA	2.4
1	C	129	ALA	2.4
1	D	152	GLN	2.4
1	A	290	PRO	2.3
1	C	206	TYR	2.3
1	C	171	GLY	2.2
1	C	152	GLN	2.2
1	C	153	PRO	2.2
1	C	169	GLU	2.2
1	C	90	ASP	2.1

*Continued on next page...*

Continued from previous page...

Mol	Chain	Res	Type	RSRZ
1	A	292	GLU	2.1
1	B	274	GLN	2.1
1	B	289	THR	2.0

## 6.2 Non-standard residues in protein, DNA, RNA chains [i](#)

In the following table, the Atoms column lists the number of modelled atoms in the group and the number defined in the chemical component dictionary. The B-factors column lists the minimum, median, 95<sup>th</sup> percentile and maximum values of B factors of atoms in the group. The column labelled 'Q< 0.9' lists the number of atoms with occupancy less than 0.9.

Mol	Type	Chain	Res	Atoms	RSCC	RSR	B-factors(Å <sup>2</sup> )	Q<0.9
1	KCX	C	141	12/13	0.89	0.23	36,57,86,88	0
1	KCX	D	141	12/13	0.90	0.32	38,54,95,95	0
1	KCX	B	141	12/13	0.93	0.34	38,53,108,113	0
1	KCX	A	141	12/13	0.94	0.21	33,46,85,88	0

## 6.3 Carbohydrates [i](#)

There are no monosaccharides in this entry.

## 6.4 Ligands [i](#)

In the following table, the Atoms column lists the number of modelled atoms in the group and the number defined in the chemical component dictionary. The B-factors column lists the minimum, median, 95<sup>th</sup> percentile and maximum values of B factors of atoms in the group. The column labelled 'Q< 0.9' lists the number of atoms with occupancy less than 0.9.

Mol	Type	Chain	Res	Atoms	RSCC	RSR	B-factors(Å <sup>2</sup> )	Q<0.9
2	PLP	A	401	15/16	0.94	0.21	36,44,52,52	0
3	CL	A	402	1/1	0.94	0.11	40,40,40,40	0
2	PLP	B	401	15/16	0.95	0.22	35,59,65,65	0
2	PLP	D	401	15/16	0.96	0.19	39,59,63,63	0
2	PLP	C	401	15/16	0.96	0.20	34,55,63,71	0
3	CL	B	402	1/1	0.97	0.11	24,24,24,24	0
3	CL	D	402	1/1	0.97	0.13	39,39,39,39	0
3	CL	C	402	1/1	0.98	0.15	19,19,19,19	0

## 6.5 Other polymers [i](#)

There are no such residues in this entry.