



# Full wwPDB X-ray Structure Validation Report ⓘ

Sep 18, 2023 – 07:24 PM EDT

PDB ID : 5D8P  
Title : 2.35Å resolution structure of iron bound BfrB (wild-type, C2221 form) from *Pseudomonas aeruginosa*  
Authors : Lovell, S.; Battaile, K.P.; Wang, Y.; Yao, H.; Rivera, M.  
Deposited on : 2015-08-17  
Resolution : 2.35 Å (reported)

This is a Full wwPDB X-ray Structure Validation Report for a publicly released PDB entry.

We welcome your comments at [validation@mail.wwpdb.org](mailto:validation@mail.wwpdb.org)

A user guide is available at

<https://www.wwpdb.org/validation/2017/XrayValidationReportHelp>

with specific help available everywhere you see the ⓘ symbol.

The types of validation reports are described at

<http://www.wwpdb.org/validation/2017/FAQs#types>.

---

The following versions of software and data (see [references ⓘ](#)) were used in the production of this report:

MolProbity : 4.02b-467  
Mogul : 1.8.5 (274361), CSD as541be (2020)  
Xtriage (Phenix) : 1.13  
EDS : 2.35.1  
buster-report : 1.1.7 (2018)  
Percentile statistics : 20191225.v01 (using entries in the PDB archive December 25th 2019)  
Refmac : 5.8.0158  
CCP4 : 7.0.044 (Gargrove)  
Ideal geometry (proteins) : Engh & Huber (2001)  
Ideal geometry (DNA, RNA) : Parkinson et al. (1996)  
Validation Pipeline (wwPDB-VP) : 2.35.1

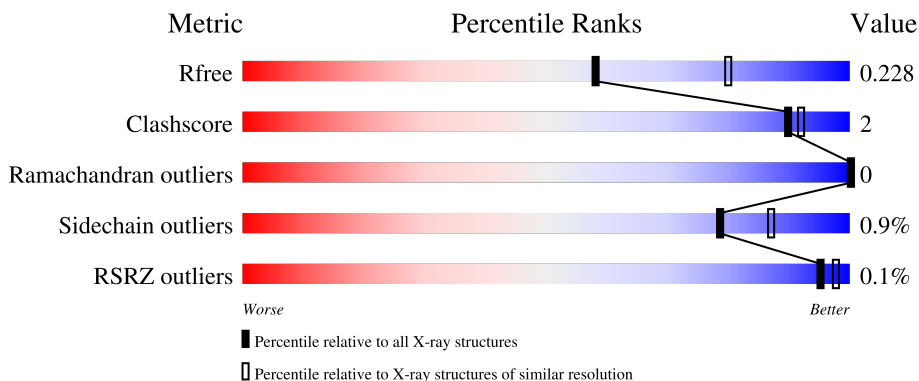
# 1 Overall quality at a glance

The following experimental techniques were used to determine the structure:

*X-RAY DIFFRACTION*

The reported resolution of this entry is 2.35 Å.

Percentile scores (ranging between 0-100) for global validation metrics of the entry are shown in the following graphic. The table shows the number of entries on which the scores are based.



Metric	Whole archive (#Entries)	Similar resolution (#Entries, resolution range(Å))
$R_{free}$	130704	1164 (2.36-2.36)
Clashscore	141614	1232 (2.36-2.36)
Ramachandran outliers	138981	1211 (2.36-2.36)
Sidechain outliers	138945	1212 (2.36-2.36)
RSRZ outliers	127900	1150 (2.36-2.36)

The table below summarises the geometric issues observed across the polymeric chains and their fit to the electron density. The red, orange, yellow and green segments of the lower bar indicate the fraction of residues that contain outliers for  $\geq 3$ , 2, 1 and 0 types of geometric quality criteria respectively. A grey segment represents the fraction of residues that are not modelled. The numeric value for each fraction is indicated below the corresponding segment, with a dot representing fractions  $\leq 5\%$ . The upper red bar (where present) indicates the fraction of residues that have poor fit to the electron density. The numeric value is given above the bar.

Mol	Chain	Length	Quality of chain
1	A	158	96%
1	B	158	94%
1	C	158	96%
1	D	158	93%  6%
1	E	158	96%

Continued on next page...

Continued from previous page...

Mol	Chain	Length	Quality of chain
1	F	158	 96% ..
1	G	158	 95% ..
1	H	158	 94% 5% ..
1	I	158	 95% ..
1	J	158	 94% ..
1	K	158	 97% ..
1	L	158	 96% ..

The following table lists non-polymeric compounds, carbohydrate monomers and non-standard residues in protein, DNA, RNA chains that are outliers for geometric or electron-density-fit criteria:

Mol	Type	Chain	Res	Chirality	Geometry	Clashes	Electron density
5	ACT	F	208	-	-	X	-
5	ACT	H	209	-	-	X	-

## 2 Entry composition [i](#)

There are 6 unique types of molecules in this entry. The entry contains 16034 atoms, of which 0 are hydrogens and 0 are deuteriums.

In the tables below, the ZeroOcc column contains the number of atoms modelled with zero occupancy, the AltConf column contains the number of residues with at least one atom in alternate conformation and the Trace column contains the number of residues modelled with at most 2 atoms.

- Molecule 1 is a protein called Ferroxidase.

Mol	Chain	Residues	Atoms					ZeroOcc	AltConf	Trace
			Total	C	N	O	S			
1	A	156	1258	795	214	242	7	0	1	0
1	B	156	1253	794	214	238	7	0	1	0
1	C	156	1260	799	214	240	7	0	1	0
1	D	156	1260	796	214	243	7	0	1	0
1	E	156	1263	800	215	241	7	0	1	0
1	F	156	1261	798	215	241	7	0	1	0
1	G	156	1257	797	213	240	7	0	1	0
1	H	156	1256	795	213	241	7	0	1	0
1	I	156	1247	790	213	237	7	0	1	0
1	J	156	1260	797	214	242	7	0	1	0
1	K	156	1250	793	213	237	7	0	1	0
1	L	156	1260	799	214	240	7	0	1	0

- Molecule 2 is POTASSIUM ION (three-letter code: K) (formula: K).

Mol	Chain	Residues	Atoms	ZeroOcc	AltConf
2	A	1	Total 1 K 1	0	0
2	B	1	Total 1 K 1	0	0

*Continued on next page...*

*Continued from previous page...*

Mol	Chain	Residues	Atoms	ZeroOcc	AltConf
2	D	1	Total K 1 1	0	0

- Molecule 3 is FE (II) ION (three-letter code: FE2) (formula: Fe).

Mol	Chain	Residues	Atoms	ZeroOcc	AltConf
3	A	6	Total Fe 6 6	0	0
3	B	7	Total Fe 7 7	0	0
3	C	5	Total Fe 5 5	0	0
3	D	8	Total Fe 8 8	0	0
3	E	5	Total Fe 5 5	0	0
3	F	7	Total Fe 7 7	0	0
3	G	7	Total Fe 7 7	0	0
3	H	8	Total Fe 8 8	0	0
3	I	7	Total Fe 7 7	0	0
3	J	6	Total Fe 6 6	0	0
3	K	5	Total Fe 5 5	0	0
3	L	6	Total Fe 6 6	0	0

- Molecule 4 is PROTOPORPHYRIN IX CONTAINING FE (three-letter code: HEM) (formula: C<sub>34</sub>H<sub>32</sub>FeN<sub>4</sub>O<sub>4</sub>).



Mol	Chain	Residues	Atoms				ZeroOcc	AltConf	
4	A	1	Total	C	Fe	N	O	0	0
			43	34	1	4	4		
4	C	1	Total	C	Fe	N	O	0	0
			43	34	1	4	4		
4	D	1	Total	C	Fe	N	O	0	0
			43	34	1	4	4		
4	E	1	Total	C	Fe	N	O	0	0
			43	34	1	4	4		
4	J	1	Total	C	Fe	N	O	0	0
			43	34	1	4	4		
4	K	1	Total	C	Fe	N	O	0	0
			43	34	1	4	4		
4	L	1	Total	C	Fe	N	O	0	0
			43	34	1	4	4		

- Molecule 5 is ACETATE ION (three-letter code: ACT) (formula: C<sub>2</sub>H<sub>3</sub>O<sub>2</sub>).



Mol	Chain	Residues	Atoms	ZeroOcc	AltConf
5	A	1	Total C O 4 2 2	0	0
5	B	1	Total C O 4 2 2	0	0
5	C	1	Total C O 4 2 2	0	0
5	D	1	Total C O 4 2 2	0	0
5	E	1	Total C O 4 2 2	0	0
5	F	1	Total C O 4 2 2	0	0
5	F	1	Total C O 4 2 2	0	0
5	F	1	Total C O 4 2 2	0	0
5	F	1	Total C O 4 2 2	0	0
5	F	1	Total C O 4 2 2	0	0
5	G	1	Total C O 4 2 2	0	0
5	H	1	Total C O 4 2 2	0	0
5	H	1	Total C O 4 2 2	0	0
5	H	1	Total C O 4 2 2	0	0

*Continued on next page...*

*Continued from previous page...*

Mol	Chain	Residues	Atoms			ZeroOcc	AltConf
5	I	1	Total	C	O	0	0
			4	2	2		
5	J	1	Total	C	O	0	0
			4	2	2		
5	K	1	Total	C	O	0	0
			4	2	2		
5	L	1	Total	C	O	0	0
			4	2	2		

- Molecule 6 is water.

Mol	Chain	Residues	Atoms		ZeroOcc	AltConf
6	A	35	Total	O	0	0
			35	35		
6	B	45	Total	O	0	0
			45	45		
6	C	44	Total	O	0	0
			44	44		
6	D	39	Total	O	0	0
			39	39		
6	E	46	Total	O	0	0
			46	46		
6	F	48	Total	O	0	0
			48	48		
6	G	33	Total	O	0	0
			33	33		
6	H	41	Total	O	0	0
			41	41		
6	I	45	Total	O	0	0
			45	45		
6	J	41	Total	O	0	0
			41	41		
6	K	34	Total	O	0	0
			34	34		
6	L	45	Total	O	0	0
			45	45		



### 3 Residue-property plots [i](#)

These plots are drawn for all protein, RNA, DNA and oligosaccharide chains in the entry. The first graphic for a chain summarises the proportions of the various outlier classes displayed in the second graphic. The second graphic shows the sequence view annotated by issues in geometry and electron density. Residues are color-coded according to the number of geometric quality criteria for which they contain at least one outlier: green = 0, yellow = 1, orange = 2 and red = 3 or more. A red dot above a residue indicates a poor fit to the electron density ( $RSRZ > 2$ ). Stretches of 2 or more consecutive residues without any outlier are shown as a green connector. Residues present in the sample, but not in the model, are shown in grey.

- Molecule 1: Ferroxidase

Chain A:  96%



- Molecule 1: Ferroxidase

Chain B:  94%



- Molecule 1: Ferroxidase

Chain C:  96%



- Molecule 1: Ferroxidase

Chain D:  93% 6%



- Molecule 1: Ferroxidase

Chain E:  96%



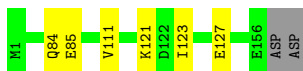
- Molecule 1: Ferroxidase

Chain F:  96%



- Molecule 1: Ferroxidase

Chain G: 95%



- Molecule 1: Ferroxidase

Chain H: 94% 5%



- Molecule 1: Ferroxidase

Chain I: 95%



- Molecule 1: Ferroxidase

Chain J: 94%



- Molecule 1: Ferroxidase

Chain K: 97%



- Molecule 1: Ferroxidase

Chain L: 96%



## 4 Data and refinement statistics

Property	Value	Source
Space group	C 2 2 21	Depositor
Cell constants a, b, c, $\alpha$ , $\beta$ , $\gamma$	131.30Å 196.08Å 202.51Å 90.00° 90.00° 90.00°	Depositor
Resolution (Å)	49.02 – 2.35 49.02 – 2.35	Depositor EDS
% Data completeness (in resolution range)	99.6 (49.02-2.35) 100.0 (49.02-2.35)	Depositor EDS
$R_{merge}$	0.15	Depositor
$R_{sym}$	(Not available)	Depositor
$\langle I/\sigma(I) \rangle$ <sup>1</sup>	2.23 (at 2.34Å)	Xtrriage
Refinement program	PHENIX	Depositor
R, $R_{free}$	0.170 , 0.227 0.173 , 0.228	Depositor DCC
$R_{free}$ test set	5309 reflections (4.90%)	wwPDB-VP
Wilson B-factor (Å <sup>2</sup> )	33.7	Xtrriage
Anisotropy	0.448	Xtrriage
Bulk solvent $k_{sol}$ (e/Å <sup>3</sup> ), $B_{sol}$ (Å <sup>2</sup> )	0.35 , 40.3	EDS
L-test for twinning <sup>2</sup>	$\langle  L  \rangle = 0.49$ , $\langle L^2 \rangle = 0.33$	Xtrriage
Estimated twinning fraction	No twinning to report.	Xtrriage
$F_o, F_c$ correlation	0.95	EDS
Total number of atoms	16034	wwPDB-VP
Average B, all atoms (Å <sup>2</sup> )	39.0	wwPDB-VP

Xtrriage's analysis on translational NCS is as follows: *The largest off-origin peak in the Patterson function is 3.35% of the height of the origin peak. No significant pseudotranslation is detected.*

<sup>1</sup>Intensities estimated from amplitudes.

<sup>2</sup>Theoretical values of  $\langle |L| \rangle$ ,  $\langle L^2 \rangle$  for acentric reflections are 0.5, 0.333 respectively for untwinned datasets, and 0.375, 0.2 for perfectly twinned datasets.

## 5 Model quality [i](#)

### 5.1 Standard geometry [i](#)

Bond lengths and bond angles in the following residue types are not validated in this section: FE2, K, ACT, HEM

The Z score for a bond length (or angle) is the number of standard deviations the observed value is removed from the expected value. A bond length (or angle) with  $|Z| > 5$  is considered an outlier worth inspection. RMSZ is the root-mean-square of all Z scores of the bond lengths (or angles).

Mol	Chain	Bond lengths		Bond angles	
		RMSZ	# Z  >5	RMSZ	# Z  >5
1	A	0.53	0/1282	0.64	0/1731
1	B	0.56	0/1277	0.64	0/1724
1	C	0.53	0/1284	0.65	1/1733 (0.1%)
1	D	0.57	0/1284	0.64	0/1734
1	E	0.56	0/1287	0.64	0/1737
1	F	0.54	0/1285	0.61	0/1735
1	G	0.55	0/1281	0.65	0/1730
1	H	0.58	0/1280	0.66	0/1729
1	I	0.54	0/1271	0.60	0/1717
1	J	0.55	0/1284	0.64	0/1733
1	K	0.55	0/1274	0.62	0/1720
1	L	0.52	0/1284	0.61	0/1733
All	All	0.55	0/15373	0.63	1/20756 (0.0%)

There are no bond length outliers.

All (1) bond angle outliers are listed below:

Mol	Chain	Res	Type	Atoms	Z	Observed(°)	Ideal(°)
1	C	30	ARG	NE-CZ-NH2	-5.29	117.66	120.30

There are no chirality outliers.

There are no planarity outliers.

### 5.2 Too-close contacts [i](#)

In the following table, the Non-H and H(model) columns list the number of non-hydrogen atoms and hydrogen atoms in the chain respectively. The H(added) column lists the number of hydrogen atoms added and optimized by MolProbity. The Clashes column lists the number of clashes within the asymmetric unit, whereas Symm-Clashes lists symmetry-related clashes.

Mol	Chain	Non-H	H(model)	H(added)	Clashes	Symm-Clashes
1	A	1258	0	1207	3	0
1	B	1253	0	1205	4	0
1	C	1260	0	1218	2	0
1	D	1260	0	1206	3	0
1	E	1263	0	1222	4	0
1	F	1261	0	1218	5	0
1	G	1257	0	1209	3	0
1	H	1256	0	1208	7	0
1	I	1247	0	1195	2	0
1	J	1260	0	1211	6	0
1	K	1250	0	1201	2	0
1	L	1260	0	1218	3	0
2	A	1	0	0	0	0
2	B	1	0	0	0	0
2	D	1	0	0	0	0
3	A	6	0	0	0	0
3	B	7	0	0	0	0
3	C	5	0	0	0	0
3	D	8	0	0	0	0
3	E	5	0	0	0	0
3	F	7	0	0	0	0
3	G	7	0	0	0	0
3	H	8	0	0	0	0
3	I	7	0	0	0	0
3	J	6	0	0	0	0
3	K	5	0	0	0	0
3	L	6	0	0	0	0
4	A	43	0	30	3	0
4	C	43	0	30	2	0
4	D	43	0	30	2	0
4	E	43	0	30	3	0
4	J	43	0	30	3	0
4	K	43	0	30	3	0
4	L	43	0	30	1	0
5	A	4	0	3	1	0
5	B	4	0	3	1	0
5	C	4	0	3	0	0
5	D	4	0	3	0	0
5	E	4	0	3	0	0
5	F	20	0	15	2	0
5	G	4	0	3	0	0
5	H	12	0	9	2	0
5	I	4	0	3	0	0

*Continued on next page...*

*Continued from previous page...*

Mol	Chain	Non-H	H(model)	H(added)	Clashes	Symm-Clashes
5	J	4	0	3	1	0
5	K	4	0	3	0	0
5	L	4	0	3	0	0
6	A	35	0	0	0	0
6	B	45	0	0	0	0
6	C	44	0	0	1	0
6	D	39	0	0	1	0
6	E	46	0	0	0	0
6	F	48	0	0	1	0
6	G	33	0	0	1	0
6	H	41	0	0	1	0
6	I	45	0	0	0	0
6	J	41	0	0	1	0
6	K	34	0	0	1	0
6	L	45	0	0	1	0
All	All	16034	0	14782	55	0

The all-atom clashscore is defined as the number of clashes found per 1000 atoms (including hydrogen atoms). The all-atom clashscore for this structure is 2.

All (55) close contacts within the same asymmetric unit are listed below, sorted by their clash magnitude.

Atom-1	Atom-2	Interatomic distance (Å)	Clash overlap (Å)
1:K:73:ASP:O	6:K:301:HOH:O	2.05	0.72
1:B:97:ALA:CB	5:B:209:ACT:H3	2.19	0.71
1:G:84:GLN:NE2	6:G:301:HOH:O	2.26	0.67
1:F:97:ALA:HB2	5:F:208:ACT:H3	1.78	0.65
1:H:97:ALA:CB	5:H:209:ACT:H3	2.29	0.63
1:F:97:ALA:CB	5:F:208:ACT:H3	2.31	0.61
1:E:109:GLU:HG2	1:E:117:ARG:HH21	1.67	0.59
1:F:84:GLN:NE2	6:F:301:HOH:O	2.35	0.59
1:H:97:ALA:HB2	5:H:209:ACT:H3	1.86	0.57
1:J:38:LYS:CG	6:J:339:HOH:O	2.54	0.55
1:A:123:ILE:O	1:A:127:GLU:HG2	2.08	0.54
4:E:206:HEM:HBC2	4:E:206:HEM:HMC2	1.90	0.54
1:H:51:GLU:HA	1:H:51:GLU:OE1	2.09	0.52
1:C:123:ILE:O	1:C:127:GLU:HG2	2.12	0.49
4:K:206:HEM:HMC2	4:K:206:HEM:HBC2	1.94	0.49
4:E:206:HEM:CMB	4:E:206:HEM:HBB2	2.43	0.49
1:D:10:HIS:O	1:D:14:ILE:HG12	2.13	0.49
1:H:52:MET:HB3	4:J:207:HEM:CHD	2.42	0.49

*Continued on next page...*

*Continued from previous page...*

Atom-1	Atom-2	Interatomic distance (Å)	Clash overlap (Å)
1:J:52:MET:HB3	4:J:207:HEM:CHB	2.43	0.49
1:E:109:GLU:CG	1:E:117:ARG:HH21	2.26	0.49
1:A:52:MET:HB3	4:A:208:HEM:CHD	2.43	0.48
1:E:20:ILE:HD11	1:E:75:GLY:HA3	1.95	0.48
1:K:123:ILE:O	1:K:127:GLU:HG2	2.14	0.47
4:A:208:HEM:HBC2	4:A:208:HEM:HMC2	1.97	0.47
1:F:119:LEU:HD12	1:F:119:LEU:O	2.14	0.47
1:C:34:ASP:O	6:C:301:HOH:O	2.21	0.47
1:L:96:LYS:CG	6:L:329:HOH:O	2.62	0.47
1:L:52:MET:HB3	4:L:207:HEM:CHD	2.45	0.47
1:F:20:ILE:HG23	1:F:77:LEU:HD12	1.97	0.46
1:I:123:ILE:O	1:I:127:GLU:HG2	2.15	0.46
4:C:206:HEM:CHB	1:I:52:MET:HB3	2.46	0.46
4:C:206:HEM:HMC2	4:C:206:HEM:HBC2	1.97	0.46
4:D:210:HEM:HBC2	4:D:210:HEM:HMC1	1.99	0.45
1:J:27:LEU:HD23	1:J:79:ILE:HD12	2.00	0.44
1:D:94:GLU:O	1:D:98:THR:HG23	2.17	0.44
1:G:111:VAL:CG1	1:G:111:VAL:O	2.65	0.44
1:D:105:ILE:HG23	1:D:117:ARG:HG3	2.00	0.44
1:L:123:ILE:O	1:L:127:GLU:HG2	2.18	0.44
1:B:94:GLU:O	1:B:98:THR:HG23	2.18	0.43
1:J:123:ILE:O	1:J:127:GLU:HG2	2.18	0.43
4:D:210:HEM:O1A	6:D:301:HOH:O	2.21	0.43
1:E:52:MET:HB3	4:E:206:HEM:CHB	2.48	0.43
1:A:93:LEU:HG	5:A:209:ACT:H1	2.01	0.43
4:A:208:HEM:HBC2	4:A:208:HEM:CMC	2.49	0.43
1:H:127:GLU:HA	1:H:127:GLU:OE2	2.19	0.42
4:J:207:HEM:CMB	4:J:207:HEM:HBB2	2.50	0.42
1:B:51:GLU:HA	1:B:51:GLU:OE1	2.20	0.42
4:K:206:HEM:CMB	4:K:206:HEM:HBB2	2.49	0.42
1:G:123:ILE:O	1:G:127:GLU:HG2	2.20	0.42
1:J:127:GLU:OE2	1:J:127:GLU:HA	2.20	0.41
1:H:46:HIS:HD2	6:H:340:HOH:O	2.03	0.41
1:J:97:ALA:CB	5:J:208:ACT:H2	2.51	0.41
1:B:140:LEU:O	1:B:144:VAL:HG22	2.21	0.40
4:K:206:HEM:HBB2	4:K:206:HEM:HMB1	2.02	0.40

There are no symmetry-related clashes.

## 5.3 Torsion angles [i](#)

### 5.3.1 Protein backbone [i](#)

In the following table, the Percentiles column shows the percent Ramachandran outliers of the chain as a percentile score with respect to all X-ray entries followed by that with respect to entries of similar resolution.

The Analysed column shows the number of residues for which the backbone conformation was analysed, and the total number of residues.

Mol	Chain	Analysed	Favoured	Allowed	Outliers	Percentiles	
1	A	155/158 (98%)	151 (97%)	4 (3%)	0	100	100
1	B	155/158 (98%)	155 (100%)	0	0	100	100
1	C	155/158 (98%)	154 (99%)	1 (1%)	0	100	100
1	D	155/158 (98%)	154 (99%)	1 (1%)	0	100	100
1	E	155/158 (98%)	155 (100%)	0	0	100	100
1	F	155/158 (98%)	153 (99%)	2 (1%)	0	100	100
1	G	155/158 (98%)	152 (98%)	3 (2%)	0	100	100
1	H	155/158 (98%)	154 (99%)	1 (1%)	0	100	100
1	I	155/158 (98%)	154 (99%)	1 (1%)	0	100	100
1	J	155/158 (98%)	152 (98%)	3 (2%)	0	100	100
1	K	155/158 (98%)	152 (98%)	3 (2%)	0	100	100
1	L	155/158 (98%)	154 (99%)	1 (1%)	0	100	100
All	All	1860/1896 (98%)	1840 (99%)	20 (1%)	0	100	100

There are no Ramachandran outliers to report.

### 5.3.2 Protein sidechains [i](#)

In the following table, the Percentiles column shows the percent sidechain outliers of the chain as a percentile score with respect to all X-ray entries followed by that with respect to entries of similar resolution.

The Analysed column shows the number of residues for which the sidechain conformation was analysed, and the total number of residues.

Mol	Chain	Analysed	Rotameric	Outliers	Percentiles	
1	A	133/144 (92%)	132 (99%)	1 (1%)	81	89
1	B	131/144 (91%)	130 (99%)	1 (1%)	81	89

*Continued on next page...*



Continued from previous page...

Mol	Chain	Analysed	Rotameric	Outliers	Percentiles	
1	C	133/144 (92%)	133 (100%)	0	100	100
1	D	133/144 (92%)	130 (98%)	3 (2%)	50	61
1	E	134/144 (93%)	134 (100%)	0	100	100
1	F	134/144 (93%)	133 (99%)	1 (1%)	84	91
1	G	132/144 (92%)	130 (98%)	2 (2%)	65	76
1	H	133/144 (92%)	130 (98%)	3 (2%)	50	61
1	I	130/144 (90%)	127 (98%)	3 (2%)	50	61
1	J	133/144 (92%)	133 (100%)	0	100	100
1	K	130/144 (90%)	130 (100%)	0	100	100
1	L	133/144 (92%)	133 (100%)	0	100	100
All	All	1589/1728 (92%)	1575 (99%)	14 (1%)	78	87

All (14) residues with a non-rotameric sidechain are listed below:

Mol	Chain	Res	Type
1	A	121	LYS
1	B	121	LYS
1	D	39	ARG
1	D	77	LEU
1	D	121	LYS
1	F	77	LEU
1	G	85	GLU
1	G	121	LYS
1	H	77	LEU
1	H	121	LYS
1	H	125	GLU
1	I	29	SER
1	I	30	ARG
1	I	77	LEU

Sometimes sidechains can be flipped to improve hydrogen bonding and reduce clashes. There are no such sidechains identified.

### 5.3.3 RNA ⓘ

There are no RNA molecules in this entry.

## 5.4 Non-standard residues in protein, DNA, RNA chains [i](#)

There are no non-standard protein/DNA/RNA residues in this entry.

## 5.5 Carbohydrates [i](#)

There are no monosaccharides in this entry.

## 5.6 Ligand geometry [i](#)

Of 105 ligands modelled in this entry, 80 are monoatomic - leaving 25 for Mogul analysis.

In the following table, the Counts columns list the number of bonds (or angles) for which Mogul statistics could be retrieved, the number of bonds (or angles) that are observed in the model and the number of bonds (or angles) that are defined in the Chemical Component Dictionary. The Link column lists molecule types, if any, to which the group is linked. The Z score for a bond length (or angle) is the number of standard deviations the observed value is removed from the expected value. A bond length (or angle) with  $|Z| > 2$  is considered an outlier worth inspection. RMSZ is the root-mean-square of all Z scores of the bond lengths (or angles).

Mol	Type	Chain	Res	Link	Bond lengths			Bond angles		
					Counts	RMSZ	# Z  > 2	Counts	RMSZ	# Z  > 2
5	ACT	H	209	3	3,3,3	0.80	0	3,3,3	1.15	0
5	ACT	A	209	3	3,3,3	0.86	0	3,3,3	0.92	0
5	ACT	F	211	3	3,3,3	0.79	0	3,3,3	1.41	0
4	HEM	K	206	1	41,50,50	1.35	5 (12%)	45,82,82	1.73	12 (26%)
5	ACT	H	211	3	3,3,3	0.77	0	3,3,3	1.81	2 (66%)
5	ACT	I	208	3	3,3,3	0.87	0	3,3,3	1.57	0
5	ACT	K	207	3	3,3,3	0.88	0	3,3,3	2.16	2 (66%)
4	HEM	A	208	1	41,50,50	1.52	5 (12%)	45,82,82	1.99	15 (33%)
5	ACT	F	210	3	3,3,3	0.76	0	3,3,3	2.28	2 (66%)
5	ACT	D	211	3	3,3,3	0.71	0	3,3,3	1.62	0
5	ACT	B	209	3	3,3,3	0.92	0	3,3,3	1.74	1 (33%)
5	ACT	F	208	3	3,3,3	0.76	0	3,3,3	1.65	1 (33%)
4	HEM	C	206	1	41,50,50	1.44	5 (12%)	45,82,82	2.03	14 (31%)
5	ACT	C	207	3	3,3,3	0.82	0	3,3,3	1.54	0
5	ACT	F	209	3	3,3,3	0.77	0	3,3,3	1.56	0
5	ACT	J	208	3	3,3,3	0.72	0	3,3,3	1.65	1 (33%)
5	ACT	H	210	3	3,3,3	0.80	0	3,3,3	1.61	0
4	HEM	D	210	1	41,50,50	1.41	3 (7%)	45,82,82	1.86	11 (24%)
5	ACT	L	208	3	3,3,3	0.73	0	3,3,3	1.52	1 (33%)
5	ACT	E	207	3	3,3,3	0.76	0	3,3,3	1.36	0

Mol	Type	Chain	Res	Link	Bond lengths			Bond angles		
					Counts	RMSZ	# Z  > 2	Counts	RMSZ	# Z  > 2
5	ACT	F	212	3	3,3,3	0.78	0	3,3,3	1.04	0
4	HEM	J	207	1	41,50,50	1.42	5 (12%)	45,82,82	2.01	17 (37%)
4	HEM	L	207	1	41,50,50	1.44	5 (12%)	45,82,82	1.71	11 (24%)
5	ACT	G	208	3	3,3,3	0.88	0	3,3,3	2.06	2 (66%)
4	HEM	E	206	1	41,50,50	1.40	5 (12%)	45,82,82	2.04	14 (31%)

In the following table, the Chirals column lists the number of chiral outliers, the number of chiral centers analysed, the number of these observed in the model and the number defined in the Chemical Component Dictionary. Similar counts are reported in the Torsion and Rings columns. '-' means no outliers of that kind were identified.

Mol	Type	Chain	Res	Link	Chirals	Torsions	Rings
4	HEM	K	206	1	-	4/12/54/54	-
4	HEM	C	206	1	-	4/12/54/54	-
4	HEM	A	208	1	-	4/12/54/54	-
4	HEM	J	207	1	-	4/12/54/54	-
4	HEM	L	207	1	-	6/12/54/54	-
4	HEM	D	210	1	-	5/12/54/54	-
4	HEM	E	206	1	-	4/12/54/54	-

All (33) bond length outliers are listed below:

Mol	Chain	Res	Type	Atoms	Z	Observed(Å)	Ideal(Å)
4	A	208	HEM	C3C-C2C	-4.65	1.33	1.40
4	K	206	HEM	C3C-C2C	-4.32	1.34	1.40
4	E	206	HEM	C3C-C2C	-4.03	1.34	1.40
4	J	207	HEM	C3C-C2C	-3.94	1.34	1.40
4	D	210	HEM	C3C-C2C	-3.93	1.34	1.40
4	C	206	HEM	C3C-C2C	-3.88	1.35	1.40
4	L	207	HEM	C3C-CAC	3.82	1.55	1.47
4	L	207	HEM	FE-ND	3.43	2.13	1.96
4	A	208	HEM	C3C-CAC	3.22	1.54	1.47
4	J	207	HEM	C3C-CAC	3.16	1.54	1.47
4	C	206	HEM	C3C-CAC	3.05	1.54	1.47
4	D	210	HEM	C3C-CAC	2.93	1.53	1.47
4	L	207	HEM	C3C-C2C	-2.93	1.36	1.40
4	K	206	HEM	C3C-CAC	2.89	1.53	1.47
4	C	206	HEM	FE-NB	2.77	2.10	1.96
4	A	208	HEM	FE-NB	2.77	2.10	1.96
4	L	207	HEM	CAB-C3B	2.71	1.54	1.47

*Continued on next page...*

*Continued from previous page...*

Mol	Chain	Res	Type	Atoms	Z	Observed(Å)	Ideal(Å)
4	D	210	HEM	CAB-C3B	2.58	1.54	1.47
4	E	206	HEM	CMB-C2B	2.52	1.56	1.50
4	C	206	HEM	CAB-C3B	2.49	1.54	1.47
4	K	206	HEM	FE-NB	2.42	2.08	1.96
4	J	207	HEM	FE-ND	2.40	2.08	1.96
4	E	206	HEM	FE-ND	2.35	2.08	1.96
4	K	206	HEM	CAB-C3B	2.34	1.53	1.47
4	E	206	HEM	C3C-CAC	2.33	1.52	1.47
4	A	208	HEM	CAB-C3B	2.28	1.53	1.47
4	J	207	HEM	FE-NB	2.26	2.08	1.96
4	J	207	HEM	C3D-C2D	-2.23	1.31	1.36
4	L	207	HEM	CMD-C2D	2.18	1.55	1.50
4	A	208	HEM	CMB-C2B	2.16	1.55	1.50
4	C	206	HEM	CHA-C4D	2.11	1.40	1.35
4	E	206	HEM	CAB-C3B	2.03	1.53	1.47
4	K	206	HEM	CMB-C2B	2.02	1.55	1.50

All (106) bond angle outliers are listed below:

Mol	Chain	Res	Type	Atoms	Z	Observed(°)	Ideal(°)
4	C	206	HEM	C4D-ND-C1D	5.47	110.72	105.07
4	A	208	HEM	C4D-ND-C1D	4.90	110.14	105.07
4	E	206	HEM	C4D-ND-C1D	4.59	109.81	105.07
4	J	207	HEM	C4D-ND-C1D	4.47	109.69	105.07
4	C	206	HEM	C4B-CHC-C1C	4.33	128.27	122.56
4	D	210	HEM	C4D-ND-C1D	4.33	109.54	105.07
4	C	206	HEM	CMC-C2C-C3C	4.09	132.34	124.68
4	C	206	HEM	C3D-C4D-ND	-4.03	105.68	110.17
4	E	206	HEM	C2C-C3C-C4C	3.99	109.68	106.90
4	E	206	HEM	CBA-CAA-C2A	-3.98	105.83	112.62
4	J	207	HEM	C1B-NB-C4B	3.97	109.17	105.07
4	A	208	HEM	C1B-NB-C4B	3.96	109.17	105.07
4	D	210	HEM	CMC-C2C-C3C	3.94	132.05	124.68
4	L	207	HEM	CMC-C2C-C3C	3.90	131.97	124.68
4	K	206	HEM	C4B-CHC-C1C	3.82	127.60	122.56
4	E	206	HEM	CMC-C2C-C3C	3.82	131.83	124.68
4	L	207	HEM	C4D-ND-C1D	3.76	108.95	105.07
4	K	206	HEM	CMC-C2C-C3C	3.75	131.70	124.68
4	E	206	HEM	C4C-CHD-C1D	3.75	127.50	122.56
4	J	207	HEM	C3D-C4D-ND	-3.74	106.00	110.17
4	D	210	HEM	C4B-CHC-C1C	3.71	127.45	122.56
4	A	208	HEM	C4B-CHC-C1C	3.68	127.41	122.56

*Continued on next page...*

*Continued from previous page...*

Mol	Chain	Res	Type	Atoms	Z	Observed(°)	Ideal(°)
4	A	208	HEM	C4A-C3A-C2A	3.65	109.54	107.00
4	L	207	HEM	C4B-CHC-C1C	3.63	127.34	122.56
4	A	208	HEM	CHC-C4B-NB	3.60	128.34	124.43
4	L	207	HEM	C1B-NB-C4B	3.57	108.76	105.07
4	E	206	HEM	C3D-C4D-ND	-3.57	106.19	110.17
4	A	208	HEM	C3D-C4D-ND	-3.56	106.20	110.17
4	K	206	HEM	C4D-ND-C1D	3.54	108.73	105.07
4	D	210	HEM	CBA-CAA-C2A	-3.41	106.80	112.62
4	J	207	HEM	CMC-C2C-C3C	3.32	130.89	124.68
4	C	206	HEM	C2D-C1D-ND	-3.19	106.06	109.88
4	J	207	HEM	C2C-C3C-C4C	3.16	109.10	106.90
4	D	210	HEM	C3B-C2B-C1B	3.14	108.81	106.49
4	D	210	HEM	C3D-C4D-ND	-3.13	106.69	110.17
4	J	207	HEM	C4B-C3B-C2B	3.11	109.58	107.11
4	A	208	HEM	C4C-CHD-C1D	3.05	126.58	122.56
4	A	208	HEM	CMC-C2C-C3C	3.02	130.34	124.68
4	C	206	HEM	CAD-CBD-CGD	-3.02	107.11	113.60
4	J	207	HEM	C4B-CHC-C1C	2.94	126.44	122.56
4	C	206	HEM	CHA-C4D-ND	2.92	127.99	124.38
4	E	206	HEM	C2D-C1D-ND	-2.92	106.39	109.88
4	J	207	HEM	CHC-C4B-NB	2.91	127.59	124.43
4	E	206	HEM	C1B-NB-C4B	2.90	108.06	105.07
4	A	208	HEM	C4B-C3B-C2B	2.89	109.41	107.11
4	E	206	HEM	CMA-C3A-C4A	-2.89	124.03	128.46
4	C	206	HEM	C2C-C3C-C4C	2.89	108.91	106.90
4	C	206	HEM	CMA-C3A-C4A	-2.88	124.04	128.46
4	K	206	HEM	C2C-C3C-C4C	2.87	108.90	106.90
5	F	210	ACT	OXT-C-CH3	2.87	127.02	115.18
4	A	208	HEM	C2D-C1D-ND	-2.83	106.49	109.88
4	J	207	HEM	C4C-CHD-C1D	2.80	126.26	122.56
4	J	207	HEM	C2D-C1D-ND	-2.76	106.58	109.88
5	G	208	ACT	OXT-C-O	-2.76	111.90	122.05
4	K	206	HEM	C2D-C1D-ND	-2.74	106.61	109.88
5	F	210	ACT	OXT-C-O	-2.70	112.11	122.05
5	K	207	ACT	OXT-C-CH3	2.69	126.30	115.18
4	E	206	HEM	CAD-CBD-CGD	-2.66	107.88	113.60
4	J	207	HEM	O1A-CGA-CBA	-2.66	114.54	123.08
4	K	206	HEM	C4C-CHD-C1D	2.61	126.00	122.56
5	K	207	ACT	OXT-C-O	-2.60	112.49	122.05
4	L	207	HEM	C2D-C1D-ND	-2.52	106.87	109.88
4	L	207	HEM	CHC-C4B-NB	2.49	127.14	124.43
4	D	210	HEM	C2D-C1D-ND	-2.49	106.90	109.88

*Continued on next page...*

*Continued from previous page...*

Mol	Chain	Res	Type	Atoms	Z	Observed(°)	Ideal(°)
4	D	210	HEM	C1B-NB-C4B	2.45	107.61	105.07
4	D	210	HEM	CMA-C3A-C4A	-2.44	124.71	128.46
4	K	206	HEM	C1B-NB-C4B	2.43	107.59	105.07
4	J	207	HEM	CBA-CAA-C2A	-2.42	108.49	112.62
4	K	206	HEM	C4A-C3A-C2A	2.40	108.66	107.00
4	K	206	HEM	C3D-C4D-ND	-2.38	107.52	110.17
4	D	210	HEM	CHC-C4B-NB	2.34	126.98	124.43
5	B	209	ACT	OXT-C-O	-2.32	113.50	122.05
4	C	206	HEM	C4A-C3A-C2A	2.29	108.59	107.00
4	L	207	HEM	C3B-C2B-C1B	2.29	108.19	106.49
4	D	210	HEM	C2C-C3C-C4C	2.28	108.49	106.90
4	C	206	HEM	C1B-NB-C4B	2.28	107.43	105.07
4	C	206	HEM	CHD-C1D-ND	2.27	126.89	124.43
4	A	208	HEM	CAD-CBD-CGD	-2.26	108.73	113.60
4	L	207	HEM	C4C-CHD-C1D	2.26	125.54	122.56
4	J	207	HEM	CAD-CBD-CGD	-2.25	108.77	113.60
5	G	208	ACT	OXT-C-CH3	2.25	124.46	115.18
4	E	206	HEM	CBD-CAD-C3D	-2.23	106.42	112.63
5	H	211	ACT	OXT-C-CH3	2.23	124.38	115.18
4	E	206	HEM	C4B-C3B-C2B	2.20	108.86	107.11
5	H	211	ACT	OXT-C-O	-2.20	113.93	122.05
4	K	206	HEM	C4B-C3B-C2B	2.20	108.86	107.11
4	J	207	HEM	C4A-C3A-C2A	2.19	108.52	107.00
4	A	208	HEM	CHA-C4D-ND	2.18	127.08	124.38
4	E	206	HEM	C3C-C4C-NC	-2.16	106.87	110.94
4	A	208	HEM	CMA-C3A-C4A	-2.15	125.16	128.46
5	F	208	ACT	OXT-C-O	-2.15	114.13	122.05
4	K	206	HEM	C1D-C2D-C3D	2.15	109.21	106.96
4	J	207	HEM	C3C-C4C-NC	-2.15	106.89	110.94
4	J	207	HEM	CMA-C3A-C4A	-2.14	125.17	128.46
5	J	208	ACT	OXT-C-CH3	2.14	124.03	115.18
4	A	208	HEM	CHD-C1D-ND	2.14	126.75	124.43
4	C	206	HEM	C3C-C4C-NC	-2.13	106.92	110.94
4	K	206	HEM	C3C-C4C-NC	-2.10	106.98	110.94
4	J	207	HEM	O2A-CGA-CBA	2.09	120.73	114.03
4	C	206	HEM	CBA-CAA-C2A	-2.09	109.06	112.62
4	L	207	HEM	CAA-CBA-CGA	-2.08	107.93	113.76
4	L	207	HEM	CMA-C3A-C4A	-2.03	125.34	128.46
5	L	208	ACT	OXT-C-CH3	2.03	123.57	115.18
4	L	207	HEM	C3D-C4D-ND	-2.02	107.92	110.17
4	E	206	HEM	CBB-CAB-C3B	-2.01	117.62	127.62
4	A	208	HEM	C2B-C1B-NB	-2.01	107.46	109.84

There are no chirality outliers.

All (31) torsion outliers are listed below:

Mol	Chain	Res	Type	Atoms
4	D	210	HEM	CAA-CBA-CGA-O2A
4	D	210	HEM	CAA-CBA-CGA-O1A
4	L	207	HEM	C3D-CAD-CBD-CGD
4	L	207	HEM	CAD-CBD-CGD-O1D
4	D	210	HEM	CAD-CBD-CGD-O2D
4	L	207	HEM	CAD-CBD-CGD-O2D
4	C	206	HEM	CAA-CBA-CGA-O1A
4	J	207	HEM	CAA-CBA-CGA-O1A
4	E	206	HEM	CAA-CBA-CGA-O2A
4	D	210	HEM	CAD-CBD-CGD-O1D
4	C	206	HEM	CAA-CBA-CGA-O2A
4	J	207	HEM	CAA-CBA-CGA-O2A
4	E	206	HEM	CAA-CBA-CGA-O1A
4	L	207	HEM	CAA-CBA-CGA-O1A
4	C	206	HEM	CAD-CBD-CGD-O2D
4	L	207	HEM	CAA-CBA-CGA-O2A
4	K	206	HEM	CAA-CBA-CGA-O2A
4	A	208	HEM	CAD-CBD-CGD-O2D
4	E	206	HEM	CAD-CBD-CGD-O1D
4	E	206	HEM	CAD-CBD-CGD-O2D
4	J	207	HEM	CAD-CBD-CGD-O2D
4	K	206	HEM	CAD-CBD-CGD-O2D
4	K	206	HEM	CAA-CBA-CGA-O1A
4	A	208	HEM	CAA-CBA-CGA-O2A
4	C	206	HEM	CAD-CBD-CGD-O1D
4	J	207	HEM	CAD-CBD-CGD-O1D
4	A	208	HEM	CAD-CBD-CGD-O1D
4	K	206	HEM	CAD-CBD-CGD-O1D
4	L	207	HEM	C4D-C3D-CAD-CBD
4	A	208	HEM	CAA-CBA-CGA-O1A
4	D	210	HEM	C4D-C3D-CAD-CBD

There are no ring outliers.

12 monomers are involved in 24 short contacts:

Mol	Chain	Res	Type	Clashes	Symm-Clashes
5	H	209	ACT	2	0
5	A	209	ACT	1	0
4	K	206	HEM	3	0
4	A	208	HEM	3	0

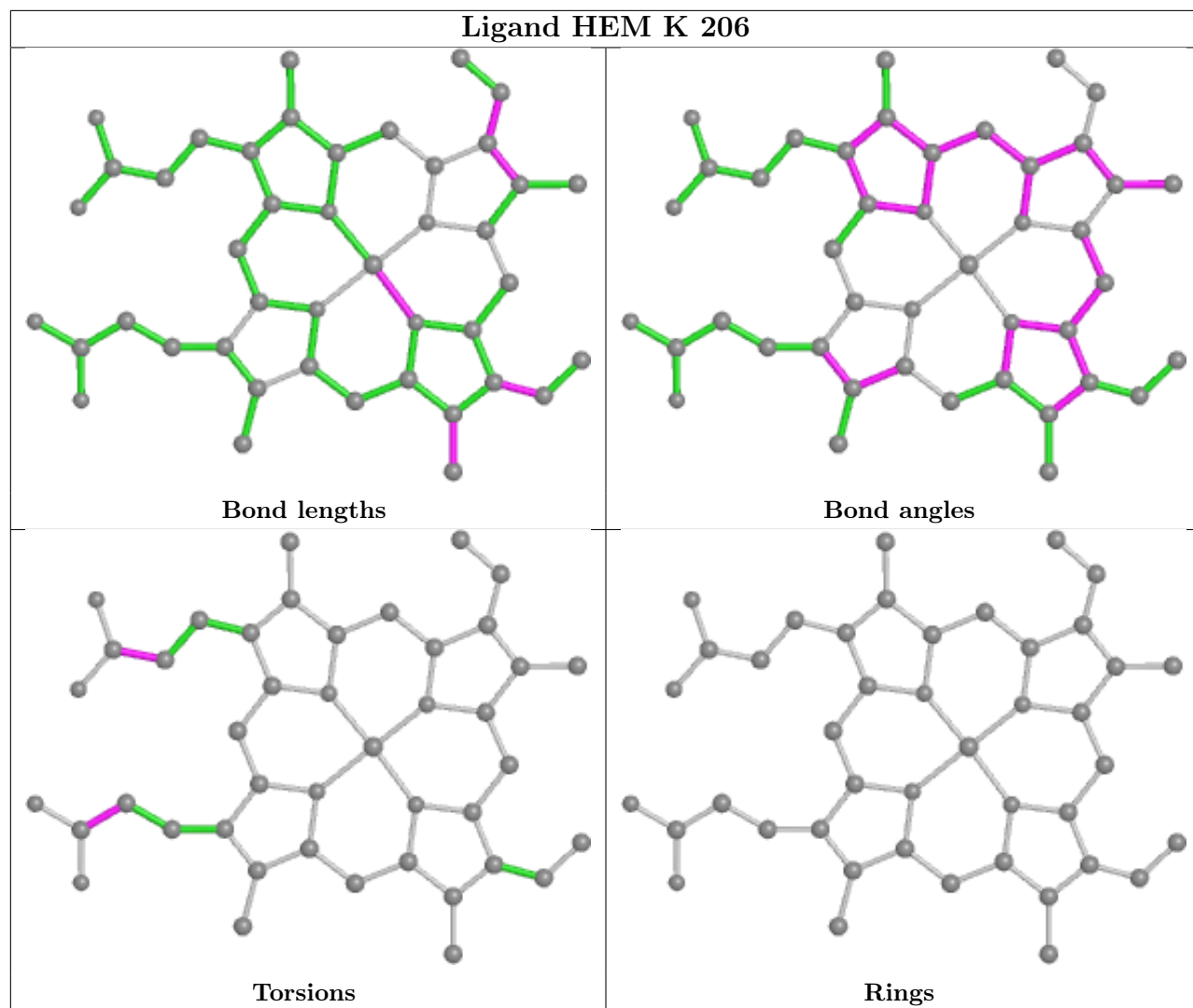
*Continued on next page...*

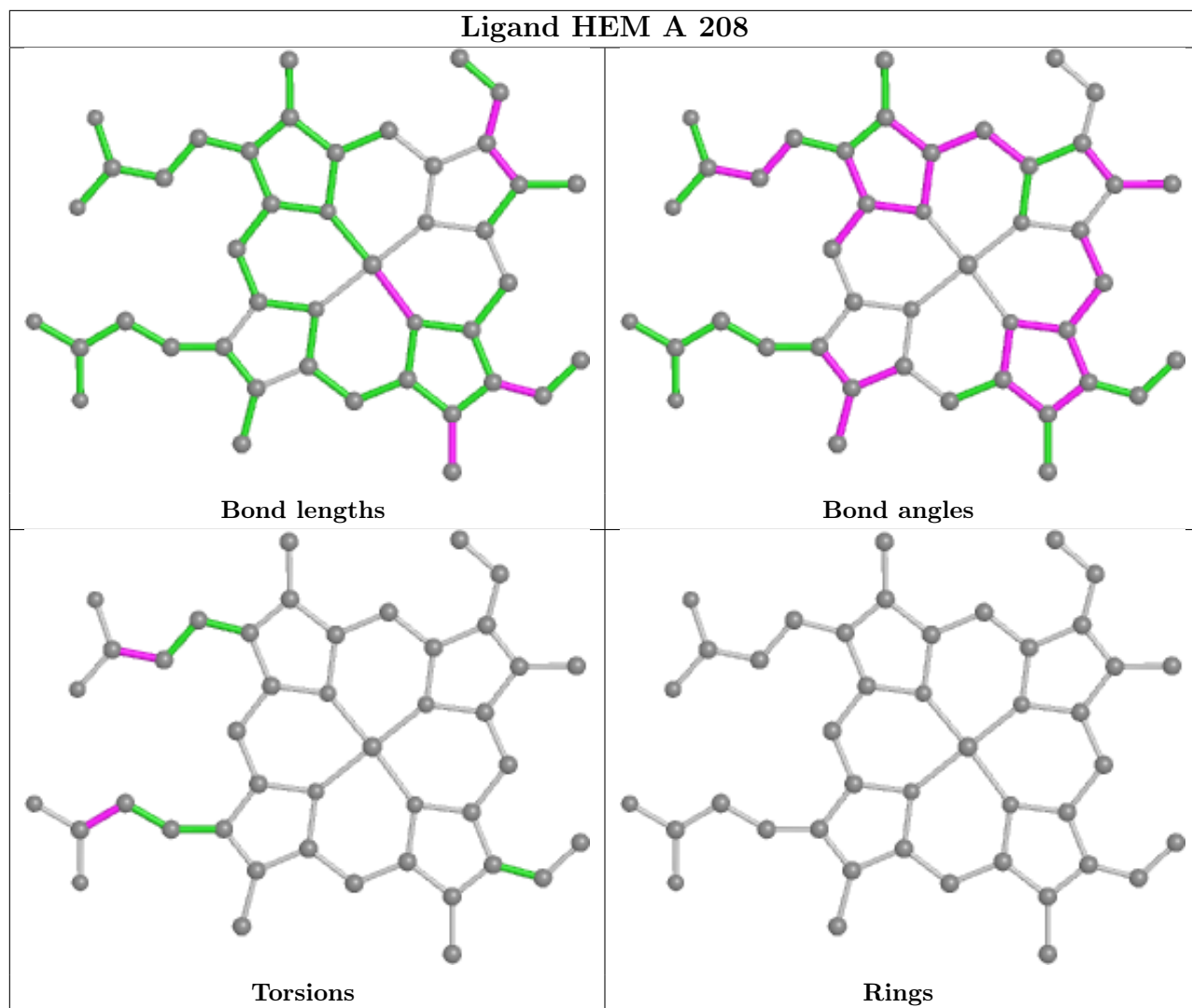
*Continued from previous page...*

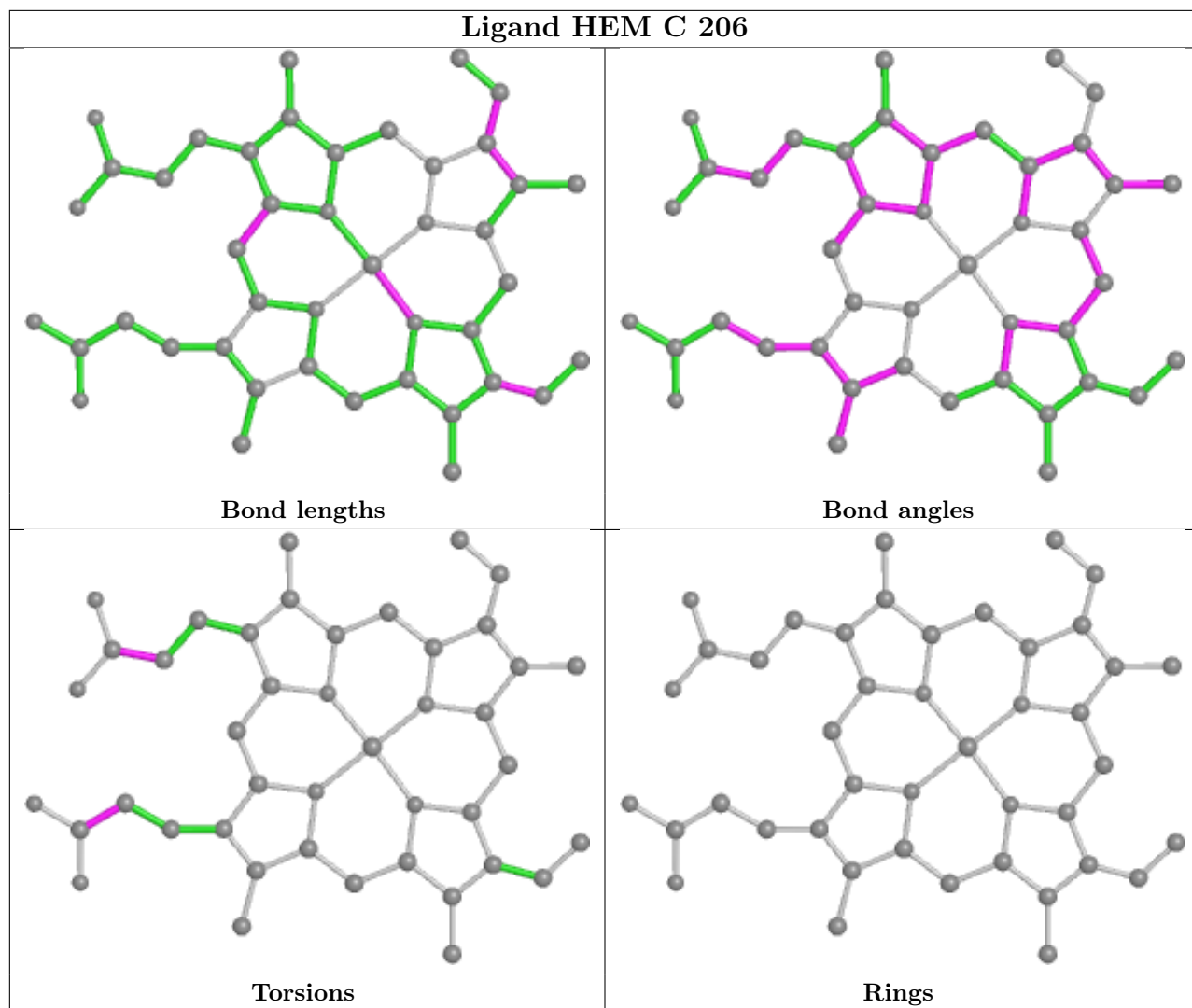
Mol	Chain	Res	Type	Clashes	Symm-Clashes
5	B	209	ACT	1	0
5	F	208	ACT	2	0
4	C	206	HEM	2	0
5	J	208	ACT	1	0
4	D	210	HEM	2	0
4	J	207	HEM	3	0
4	L	207	HEM	1	0
4	E	206	HEM	3	0

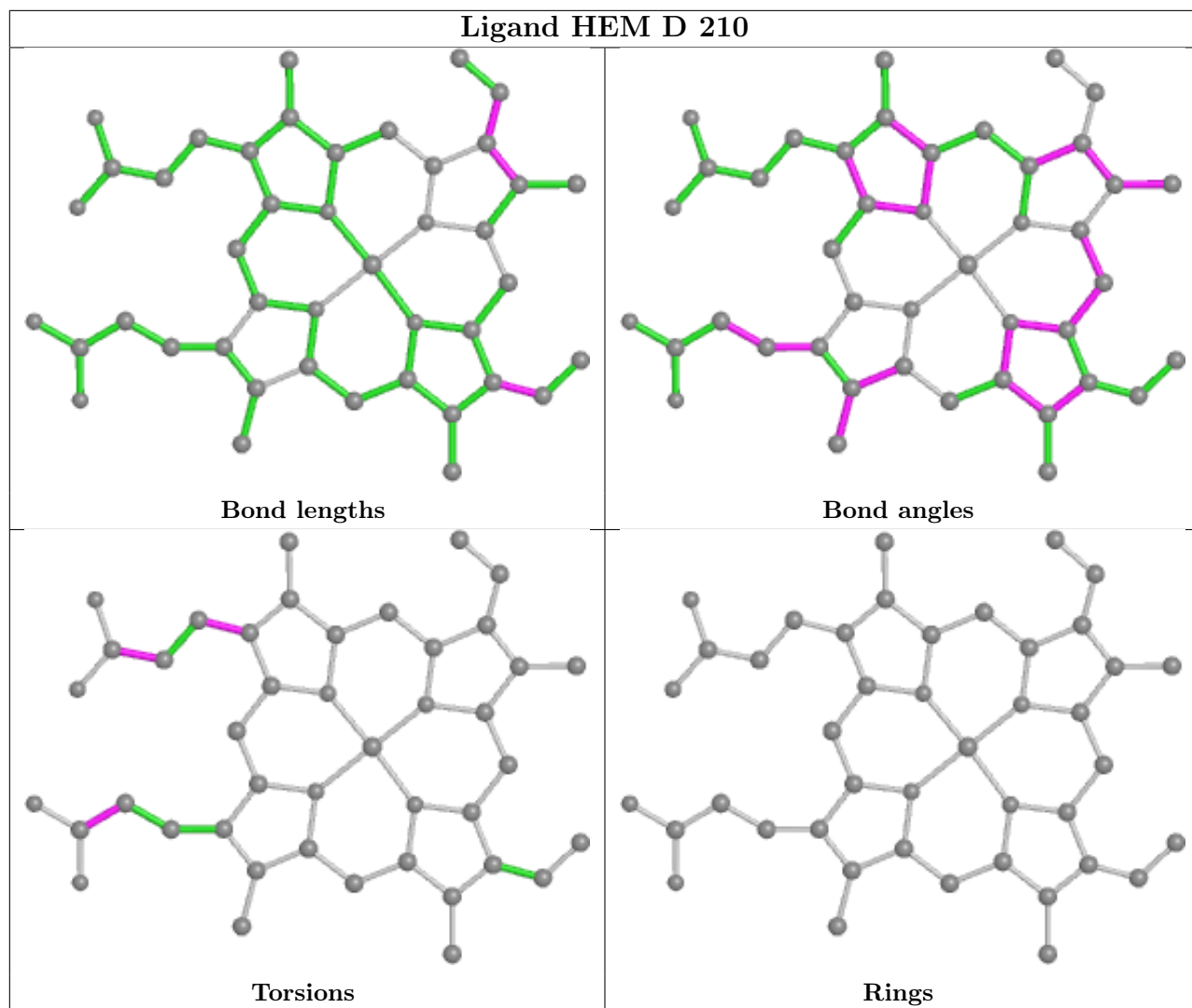
The following is a two-dimensional graphical depiction of Mogul quality analysis of bond lengths, bond angles, torsion angles, and ring geometry for all instances of the Ligand of Interest. In addition, ligands with molecular weight > 250 and outliers as shown on the validation Tables will also be included. For torsion angles, if less than 5% of the Mogul distribution of torsion angles is within 10 degrees of the torsion angle in question, then that torsion angle is considered an outlier. Any bond that is central to one or more torsion angles identified as an outlier by Mogul will be highlighted in the graph. For rings, the root-mean-square deviation (RMSD) between the ring in question and similar rings identified by Mogul is calculated over all ring torsion angles. If the average RMSD is greater than 60 degrees and the minimal RMSD between the ring in question and any Mogul-identified rings is also greater than 60 degrees, then that ring is considered an outlier. The outliers are highlighted in purple. The color gray indicates Mogul did not find sufficient equivalents in the CSD to analyse the geometry.

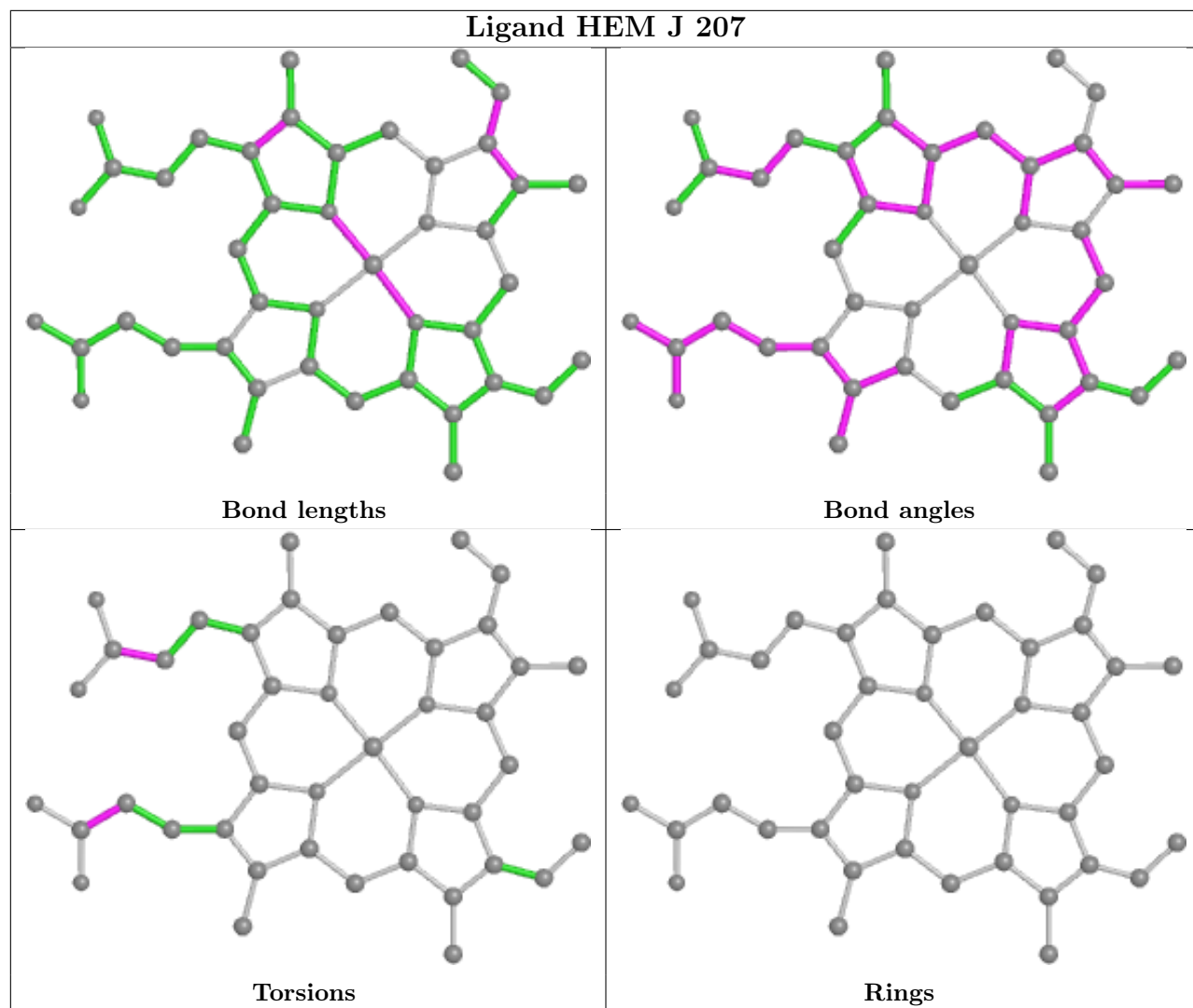


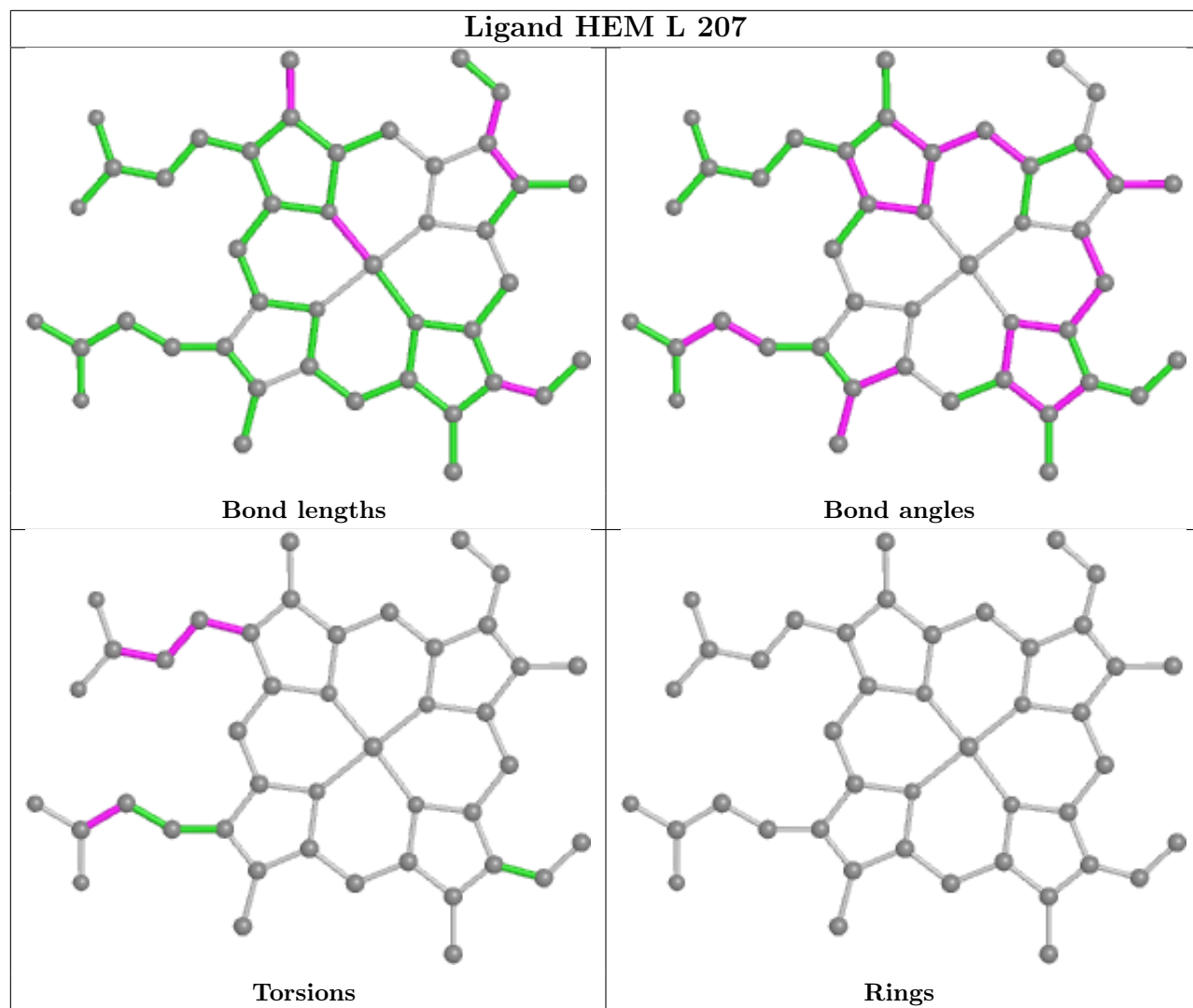


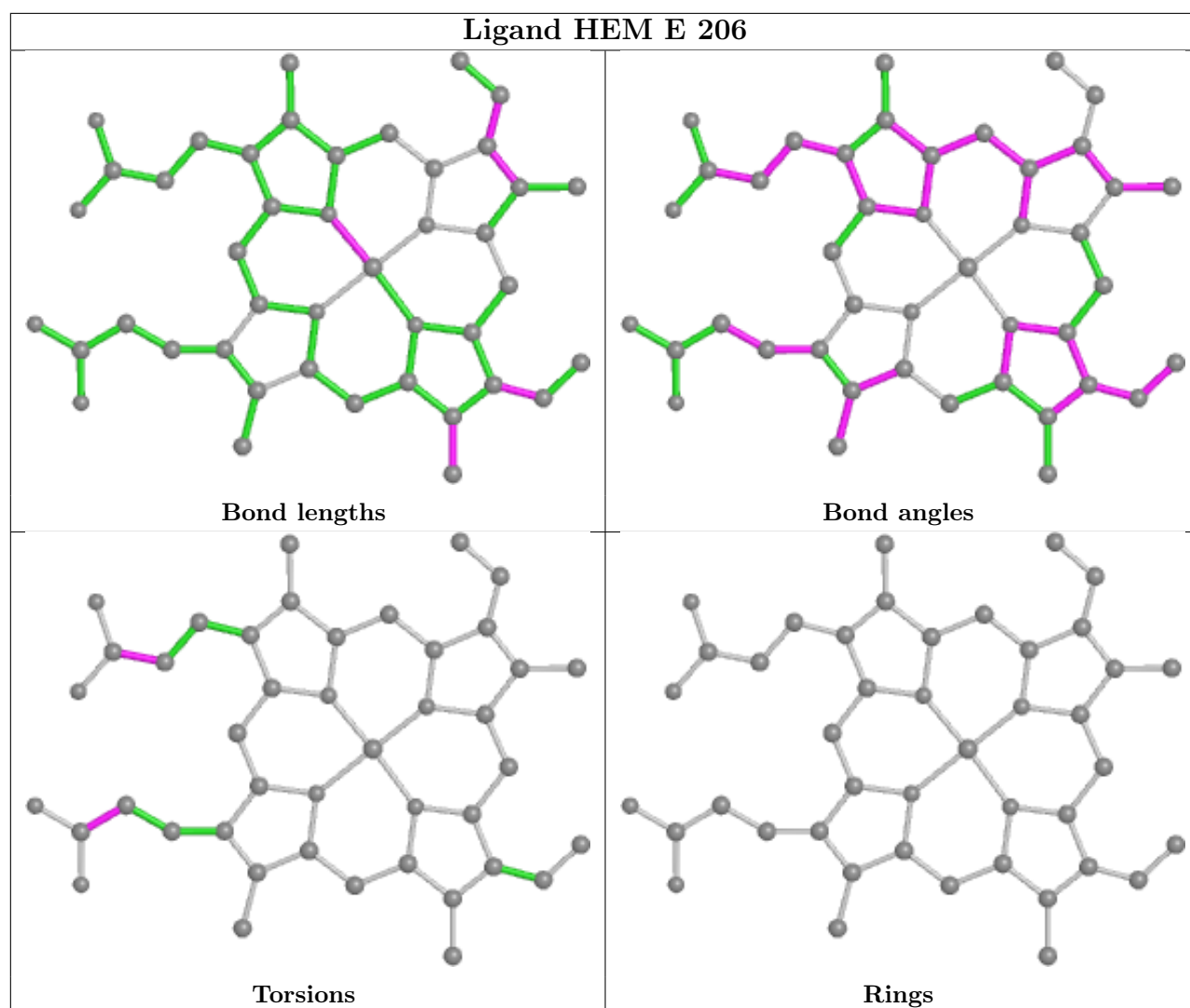












## 5.7 Other polymers [i](#)

There are no such residues in this entry.

## 5.8 Polymer linkage issues [i](#)

There are no chain breaks in this entry.

## 6 Fit of model and data [i](#)

### 6.1 Protein, DNA and RNA chains [i](#)

In the following table, the column labelled ‘#RSRZ> 2’ contains the number (and percentage) of RSRZ outliers, followed by percent RSRZ outliers for the chain as percentile scores relative to all X-ray entries and entries of similar resolution. The OWAB column contains the minimum, median, 95<sup>th</sup> percentile and maximum values of the occupancy-weighted average B-factor per residue. The column labelled ‘Q< 0.9’ lists the number of (and percentage) of residues with an average occupancy less than 0.9.

Mol	Chain	Analysed	<RSRZ>	#RSRZ>2	OWAB(Å <sup>2</sup> )	Q<0.9
1	A	156/158 (98%)	-0.44	0 100 100	32, 39, 51, 64	0
1	B	156/158 (98%)	-0.48	0 100 100	29, 37, 50, 55	0
1	C	156/158 (98%)	-0.42	0 100 100	28, 38, 51, 60	0
1	D	156/158 (98%)	-0.51	0 100 100	27, 37, 48, 59	0
1	E	156/158 (98%)	-0.49	0 100 100	29, 37, 49, 60	0
1	F	156/158 (98%)	-0.47	0 100 100	30, 37, 49, 60	0
1	G	156/158 (98%)	-0.44	0 100 100	32, 39, 50, 60	0
1	H	156/158 (98%)	-0.43	1 (0%) 89 93	30, 36, 48, 66	0
1	I	156/158 (98%)	-0.49	0 100 100	29, 37, 49, 59	0
1	J	156/158 (98%)	-0.44	0 100 100	29, 37, 49, 61	0
1	K	156/158 (98%)	-0.49	0 100 100	30, 38, 50, 67	0
1	L	156/158 (98%)	-0.40	0 100 100	29, 37, 49, 55	0
All	All	1872/1896 (98%)	-0.46	1 (0%) 95 98	27, 37, 50, 67	0

All (1) RSRZ outliers are listed below:

Mol	Chain	Res	Type	RSRZ
1	H	107	HIS	2.2

### 6.2 Non-standard residues in protein, DNA, RNA chains [i](#)

There are no non-standard protein/DNA/RNA residues in this entry.

### 6.3 Carbohydrates [i](#)

There are no monosaccharides in this entry.



## 6.4 Ligands i

In the following table, the Atoms column lists the number of modelled atoms in the group and the number defined in the chemical component dictionary. The B-factors column lists the minimum, median, 95<sup>th</sup> percentile and maximum values of B factors of atoms in the group. The column labelled 'Q< 0.9' lists the number of atoms with occupancy less than 0.9.

Mol	Type	Chain	Res	Atoms	RSCC	RSR	B-factors(Å <sup>2</sup> )	Q<0.9
3	FE2	D	209	1/1	0.44	0.13	103,103,103,103	0
3	FE2	D	208	1/1	0.49	0.15	101,101,101,101	0
3	FE2	L	204	1/1	0.57	0.10	98,98,98,98	0
3	FE2	I	207	1/1	0.59	0.20	102,102,102,102	0
3	FE2	I	206	1/1	0.59	0.17	104,104,104,104	0
3	FE2	G	207	1/1	0.68	0.13	96,96,96,96	0
3	FE2	D	206	1/1	0.69	0.19	79,79,79,79	0
3	FE2	C	205	1/1	0.70	0.21	99,99,99,99	0
3	FE2	D	207	1/1	0.71	0.08	84,84,84,84	0
3	FE2	L	206	1/1	0.74	0.16	110,110,110,110	0
3	FE2	D	202	1/1	0.79	0.07	83,83,83,83	0
3	FE2	H	201	1/1	0.81	0.16	90,90,90,90	0
3	FE2	J	201	1/1	0.84	0.07	81,81,81,81	0
3	FE2	F	204	1/1	0.85	0.17	103,103,103,103	0
3	FE2	L	201	1/1	0.87	0.15	86,86,86,86	0
3	FE2	I	205	1/1	0.88	0.09	82,82,82,82	0
3	FE2	G	206	1/1	0.88	0.14	84,84,84,84	0
3	FE2	K	205	1/1	0.88	0.21	98,98,98,98	0
3	FE2	G	205	1/1	0.89	0.07	80,80,80,80	0
3	FE2	C	201	1/1	0.89	0.08	81,81,81,81	0
3	FE2	E	205	1/1	0.89	0.09	87,87,87,87	0
3	FE2	B	208	1/1	0.89	0.12	81,81,81,81	0
3	FE2	A	202	1/1	0.90	0.08	82,82,82,82	0
3	FE2	I	201	1/1	0.90	0.08	85,85,85,85	0
3	FE2	L	205	1/1	0.92	0.15	97,97,97,97	0
5	ACT	G	208	4/4	0.92	0.18	40,40,43,47	0
5	ACT	H	210	4/4	0.92	0.17	47,48,51,60	0
3	FE2	K	201	1/1	0.93	0.17	81,81,81,81	0
5	ACT	H	211	4/4	0.93	0.12	48,50,53,58	0
3	FE2	G	201	1/1	0.94	0.10	75,75,75,75	0
3	FE2	H	208	1/1	0.94	0.10	95,95,95,95	0
3	FE2	B	202	1/1	0.94	0.12	89,89,89,89	0
3	FE2	K	204	1/1	0.94	0.09	69,69,69,69	0
3	FE2	B	207	1/1	0.94	0.08	75,75,75,75	0
3	FE2	A	207	1/1	0.94	0.14	80,80,80,80	0
5	ACT	F	208	4/4	0.95	0.17	37,41,42,49	0
5	ACT	F	210	4/4	0.95	0.12	41,42,55,56	0

*Continued on next page...*

*Continued from previous page...*

Mol	Type	Chain	Res	Atoms	RSCC	RSR	B-factors( $\text{\AA}^2$ )	Q<0.9
3	FE2	H	205	1/1	0.95	0.12	53,53,53,53	0
3	FE2	E	203	1/1	0.95	0.10	50,50,50,50	0
4	HEM	L	207	43/43	0.95	0.13	30,34,39,45	43
4	HEM	D	210	43/43	0.96	0.11	33,37,46,49	43
4	HEM	J	207	43/43	0.96	0.10	32,40,51,64	0
4	HEM	K	206	43/43	0.96	0.11	29,40,59,62	0
3	FE2	I	204	1/1	0.96	0.10	52,52,52,52	0
5	ACT	A	209	4/4	0.96	0.19	41,45,48,49	0
5	ACT	B	209	4/4	0.96	0.16	38,42,43,45	0
5	ACT	E	207	4/4	0.96	0.12	43,45,49,51	0
3	FE2	H	207	1/1	0.96	0.12	58,58,58,58	0
3	FE2	E	204	1/1	0.96	0.08	84,84,84,84	0
3	FE2	F	206	1/1	0.96	0.06	63,63,63,63	0
4	HEM	A	208	43/43	0.96	0.12	30,41,57,80	0
4	HEM	C	206	43/43	0.96	0.10	33,41,56,63	0
5	ACT	K	207	4/4	0.96	0.17	31,40,46,51	0
3	FE2	B	205	1/1	0.97	0.09	50,50,50,50	0
5	ACT	D	211	4/4	0.97	0.21	37,40,43,49	0
3	FE2	H	206	1/1	0.97	0.10	52,52,52,52	0
3	FE2	F	203	1/1	0.97	0.12	52,52,52,52	0
4	HEM	E	206	43/43	0.97	0.11	34,41,59,63	0
5	ACT	F	212	4/4	0.97	0.19	55,62,65,67	0
3	FE2	A	206	1/1	0.97	0.09	54,54,54,54	0
5	ACT	H	209	4/4	0.97	0.16	42,47,49,51	0
3	FE2	H	203	1/1	0.97	0.08	46,46,46,46	0
3	FE2	J	203	1/1	0.97	0.07	48,48,48,48	0
5	ACT	I	208	4/4	0.97	0.24	34,44,53,58	0
5	ACT	J	208	4/4	0.97	0.14	41,52,54,59	0
3	FE2	J	205	1/1	0.97	0.15	72,72,72,72	0
3	FE2	B	203	1/1	0.98	0.08	45,45,45,45	0
5	ACT	F	211	4/4	0.98	0.13	46,49,54,56	0
3	FE2	H	202	1/1	0.98	0.07	46,46,46,46	0
3	FE2	J	204	1/1	0.98	0.09	52,52,52,52	0
3	FE2	G	204	1/1	0.98	0.11	53,53,53,53	0
3	FE2	J	206	1/1	0.98	0.14	69,69,69,69	0
3	FE2	D	205	1/1	0.98	0.12	51,51,51,51	0
3	FE2	F	205	1/1	0.98	0.08	56,56,56,56	0
3	FE2	E	202	1/1	0.98	0.08	48,48,48,48	0
5	ACT	F	209	4/4	0.98	0.07	50,59,62,67	0
5	ACT	L	208	4/4	0.98	0.15	41,48,48,54	0
2	K	A	201	1/1	0.99	0.15	21,21,21,21	0
3	FE2	J	202	1/1	0.99	0.05	46,46,46,46	0

*Continued on next page...*

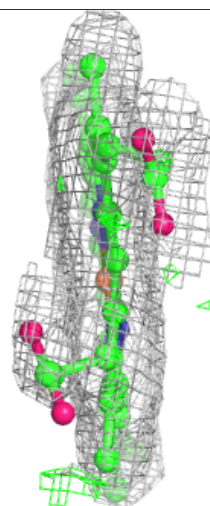
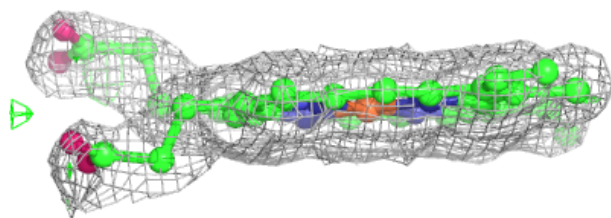
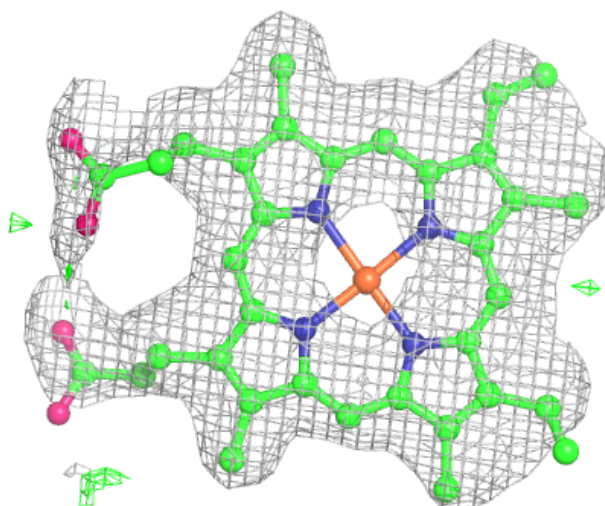
*Continued from previous page...*

Mol	Type	Chain	Res	Atoms	RSCC	RSR	B-factors( $\text{\AA}^2$ )	Q<0.9
3	FE2	B	206	1/1	0.99	0.09	51,51,51,51	0
3	FE2	D	203	1/1	0.99	0.07	43,43,43,43	0
3	FE2	F	201	1/1	0.99	0.07	44,44,44,44	0
5	ACT	C	207	4/4	0.99	0.12	43,46,50,55	0
3	FE2	H	204	1/1	0.99	0.07	47,47,47,47	0
3	FE2	D	204	1/1	0.99	0.08	44,44,44,44	0
3	FE2	K	202	1/1	0.99	0.07	45,45,45,45	0
3	FE2	A	204	1/1	0.99	0.05	47,47,47,47	0
2	K	D	201	1/1	0.99	0.19	18,18,18,18	0
3	FE2	B	204	1/1	0.99	0.07	45,45,45,45	0
3	FE2	L	202	1/1	0.99	0.06	47,47,47,47	0
3	FE2	L	203	1/1	0.99	0.07	44,44,44,44	0
3	FE2	C	202	1/1	0.99	0.10	48,48,48,48	0
3	FE2	I	202	1/1	0.99	0.07	46,46,46,46	0
3	FE2	I	203	1/1	0.99	0.08	48,48,48,48	0
3	FE2	G	202	1/1	0.99	0.04	47,47,47,47	0
3	FE2	C	203	1/1	0.99	0.07	45,45,45,45	0
3	FE2	E	201	1/1	0.99	0.07	45,45,45,45	0
3	FE2	C	204	1/1	0.99	0.13	52,52,52,52	0
3	FE2	F	207	1/1	1.00	0.04	60,60,60,60	0
3	FE2	K	203	1/1	1.00	0.07	47,47,47,47	0
2	K	B	201	1/1	1.00	0.17	19,19,19,19	0
3	FE2	A	205	1/1	1.00	0.09	50,50,50,50	0
3	FE2	G	203	1/1	1.00	0.06	47,47,47,47	0
3	FE2	A	203	1/1	1.00	0.09	48,48,48,48	0
3	FE2	F	202	1/1	1.00	0.07	44,44,44,44	0

The following is a graphical depiction of the model fit to experimental electron density of all instances of the Ligand of Interest. In addition, ligands with molecular weight > 250 and outliers as shown on the geometry validation Tables will also be included. Each fit is shown from different orientation to approximate a three-dimensional view.

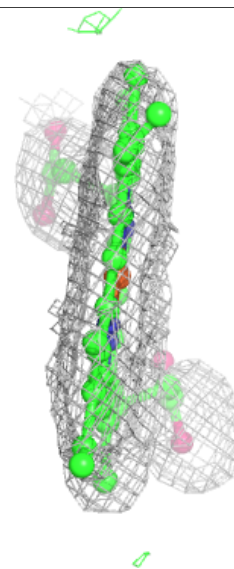
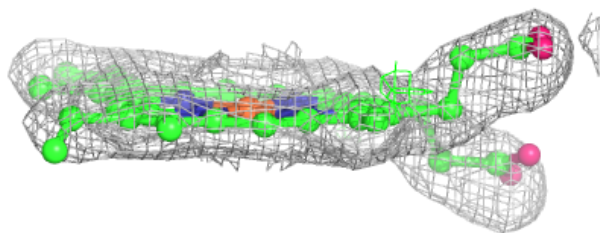
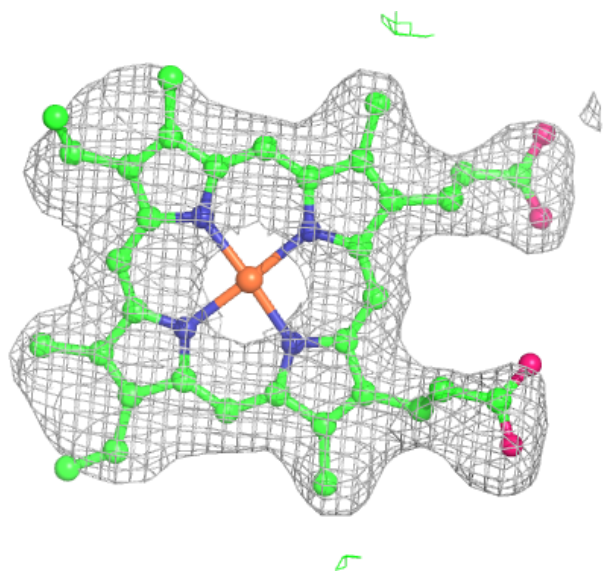
**Electron density around HEM L 207:**

$2mF_o-DF_c$  (at 0.7 rmsd) in gray  
 $mF_o-DF_c$  (at 3 rmsd) in purple (negative)  
and green (positive)



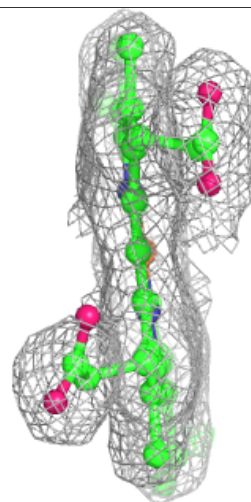
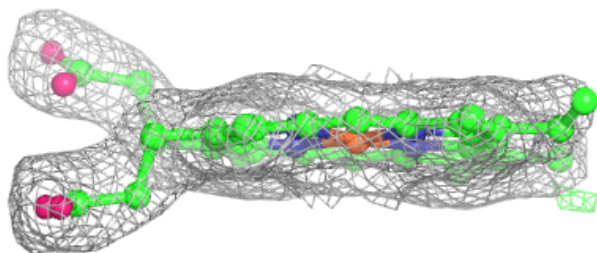
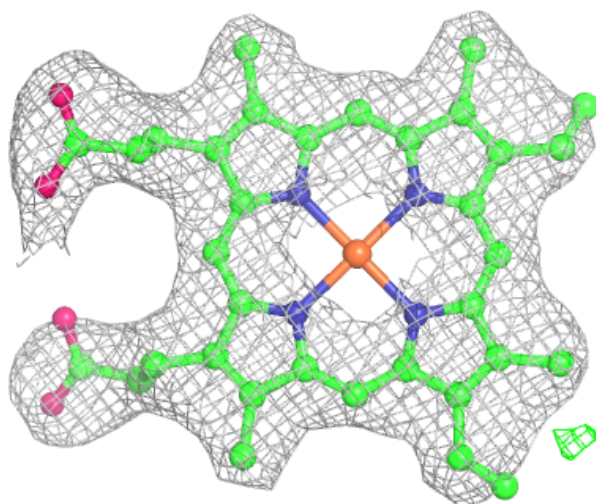
**Electron density around HEM D 210:**

$2mF_o-DF_c$  (at 0.7 rmsd) in gray  
 $mF_o-DF_c$  (at 3 rmsd) in purple (negative)  
and green (positive)



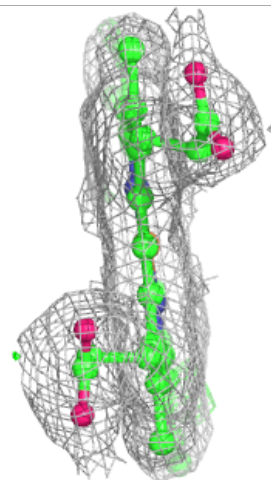
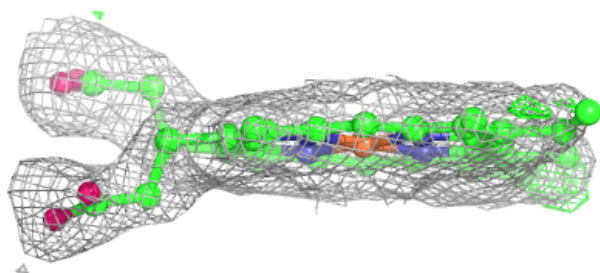
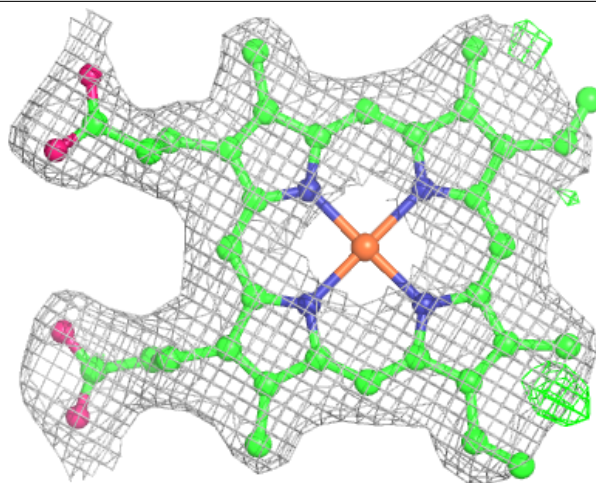
**Electron density around HEM J 207:**

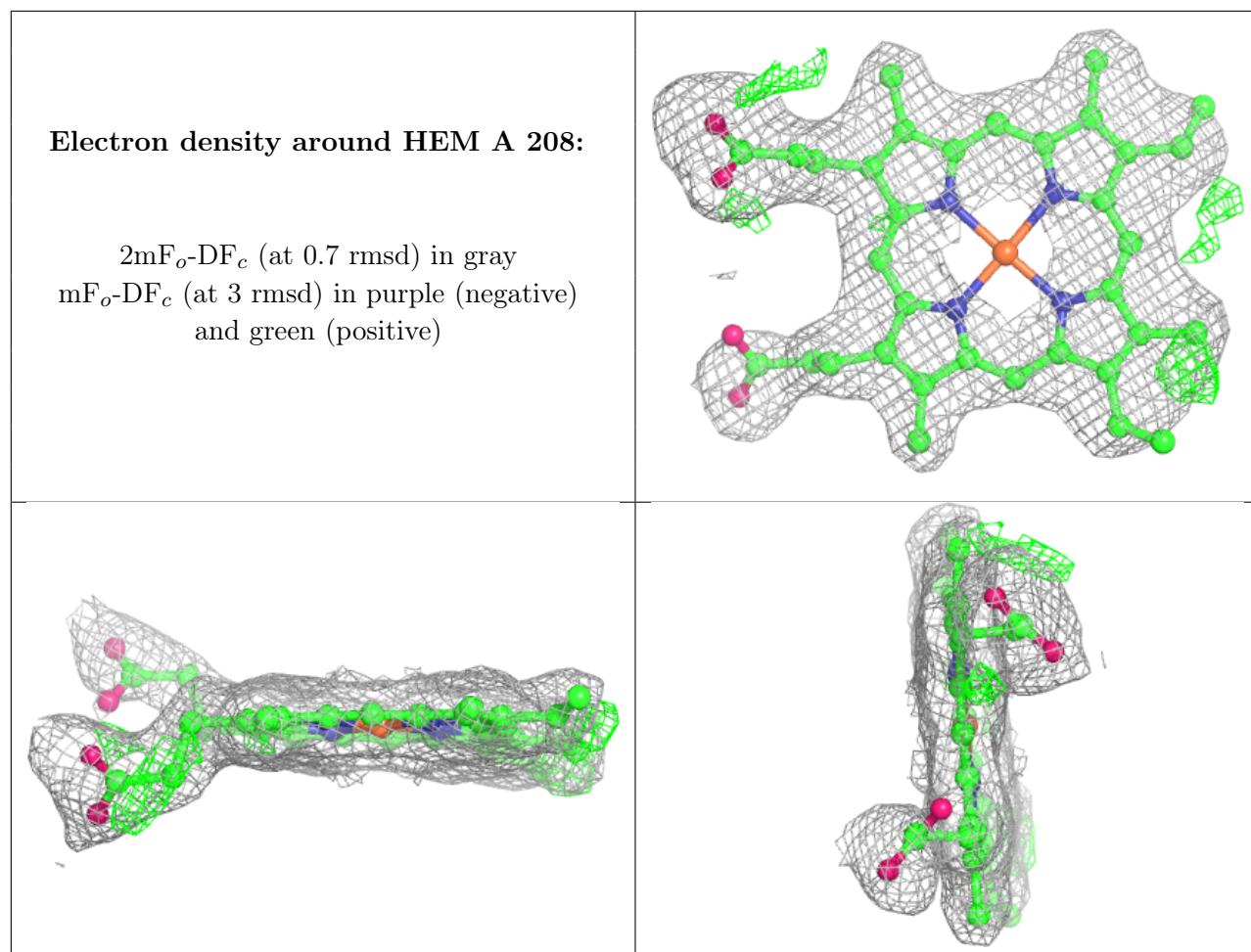
$2mF_o-DF_c$  (at 0.7 rmsd) in gray  
 $mF_o-DF_c$  (at 3 rmsd) in purple (negative)  
and green (positive)



**Electron density around HEM K 206:**

$2mF_o-DF_c$  (at 0.7 rmsd) in gray  
 $mF_o-DF_c$  (at 3 rmsd) in purple (negative)  
and green (positive)

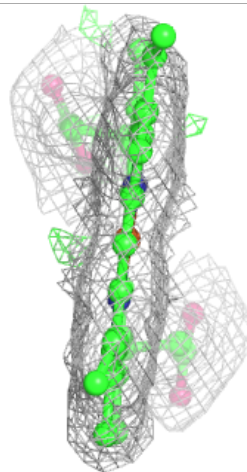
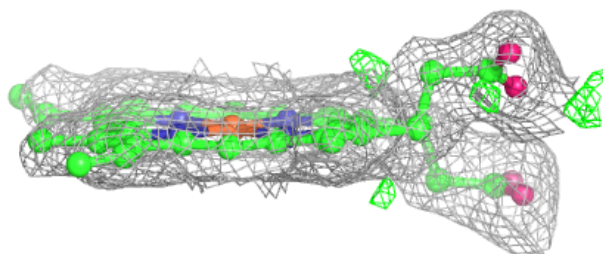
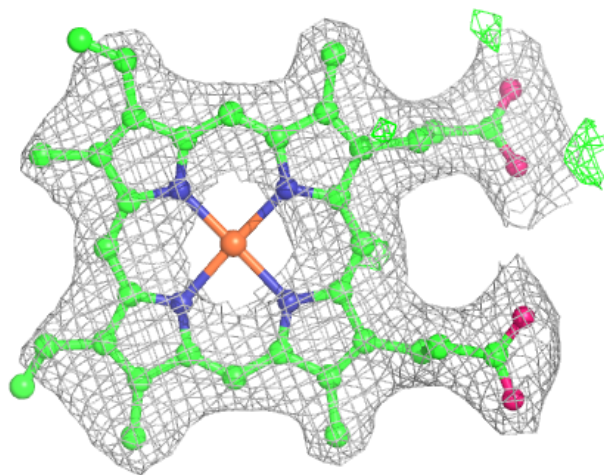


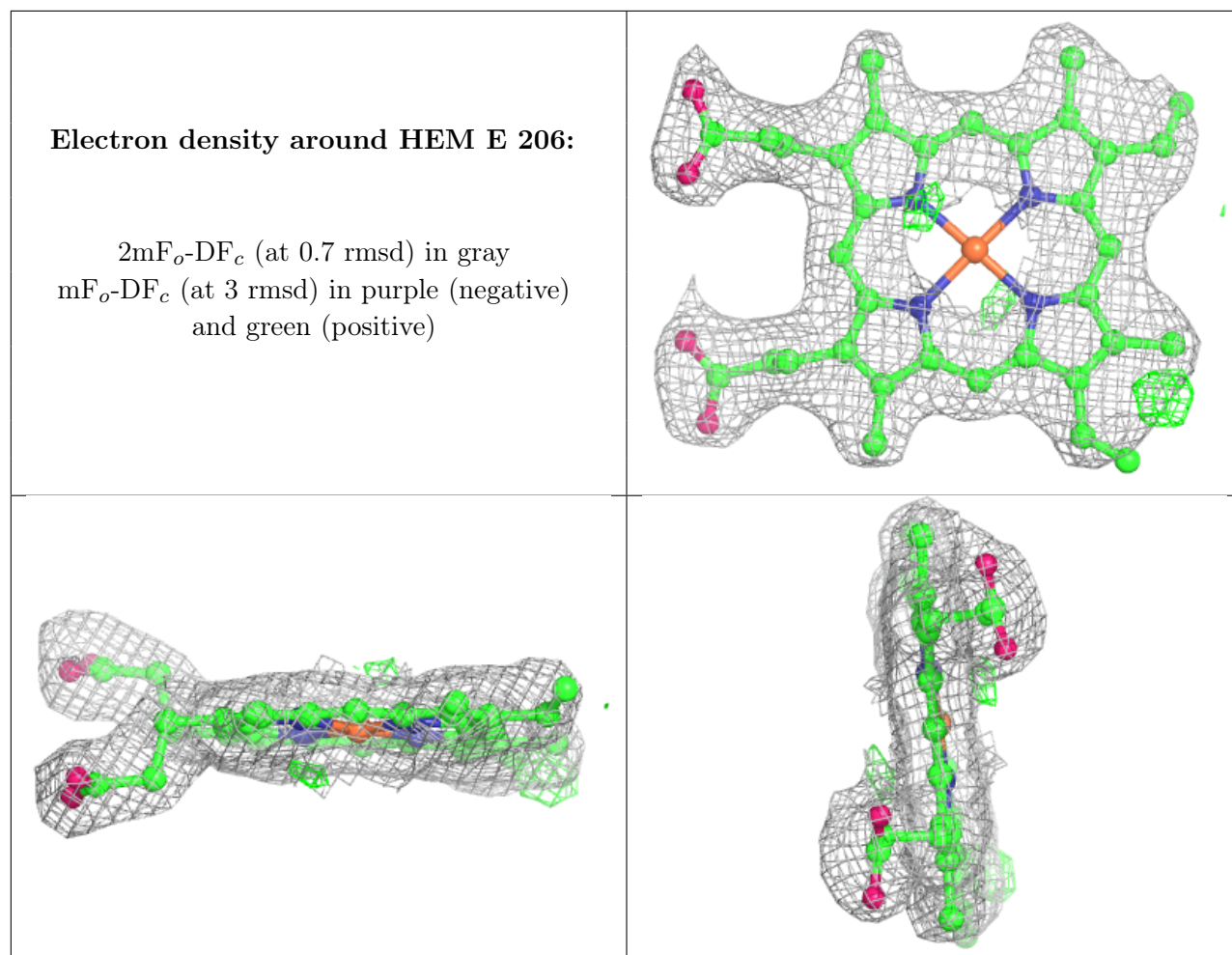




**Electron density around HEM C 206:**

$2mF_o-DF_c$  (at 0.7 rmsd) in gray  
 $mF_o-DF_c$  (at 3 rmsd) in purple (negative)  
and green (positive)





## 6.5 Other polymers [\(i\)](#)

There are no such residues in this entry.