



Full wwPDB X-ray Structure Validation Report ⓘ

Sep 18, 2023 – 10:12 PM EDT

PDB ID : 5D41
Title : EGFR kinase domain in complex with mutant selective allosteric inhibitor
Authors : Yun, C.-H.; Park, E.; Eck, M.J.
Deposited on : 2015-08-07
Resolution : 2.31 Å(reported)

This is a Full wwPDB X-ray Structure Validation Report for a publicly released PDB entry.

We welcome your comments at validation@mail.wwpdb.org

A user guide is available at

<https://www.wwpdb.org/validation/2017/XrayValidationReportHelp>

with specific help available everywhere you see the ⓘ symbol.

The types of validation reports are described at

<http://www.wwpdb.org/validation/2017/FAQs#types>.

The following versions of software and data (see [references ⓘ](#)) were used in the production of this report:

MolProbity : 4.02b-467
Mogul : 1.8.5 (274361), CSD as541be (2020)
Xtriage (Phenix) : 1.13
EDS : 2.35.1
buster-report : 1.1.7 (2018)
Percentile statistics : 20191225.v01 (using entries in the PDB archive December 25th 2019)
Refmac : 5.8.0158
CCP4 : 7.0.044 (Gargrove)
Ideal geometry (proteins) : Engh & Huber (2001)
Ideal geometry (DNA, RNA) : Parkinson et al. (1996)
Validation Pipeline (wwPDB-VP) : 2.35.1

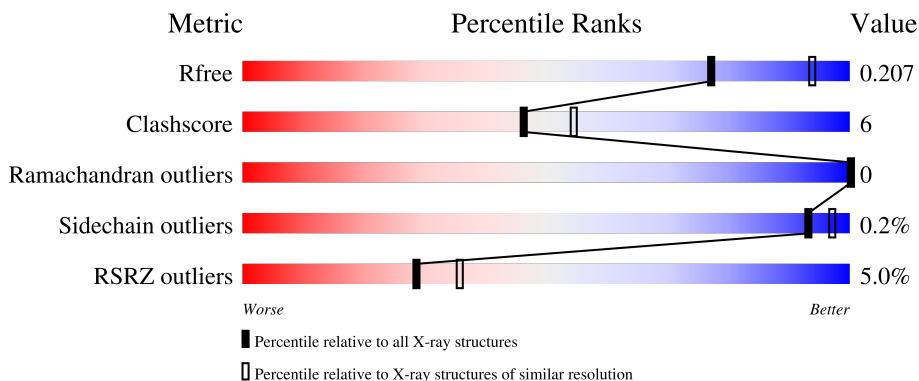
1 Overall quality at a glance i

The following experimental techniques were used to determine the structure:

X-RAY DIFFRACTION

The reported resolution of this entry is 2.31 Å.

Percentile scores (ranging between 0-100) for global validation metrics of the entry are shown in the following graphic. The table shows the number of entries on which the scores are based.



Metric	Whole archive (#Entries)	Similar resolution (#Entries, resolution range(Å))
R_{free}	130704	5974 (2.34-2.30)
Clashscore	141614	6604 (2.34-2.30)
Ramachandran outliers	138981	6523 (2.34-2.30)
Sidechain outliers	138945	6523 (2.34-2.30)
RSRZ outliers	127900	5855 (2.34-2.30)

The table below summarises the geometric issues observed across the polymeric chains and their fit to the electron density. The red, orange, yellow and green segments of the lower bar indicate the fraction of residues that contain outliers for ≥ 3 , 2, 1 and 0 types of geometric quality criteria respectively. A grey segment represents the fraction of residues that are not modelled. The numeric value for each fraction is indicated below the corresponding segment, with a dot representing fractions $\leq 5\%$. The upper red bar (where present) indicates the fraction of residues that have poor fit to the electron density. The numeric value is given above the bar.

Mol	Chain	Length	Quality of chain
1	A	331	<div style="display: flex; align-items: center;"> <div style="width: 5%; height: 10px; background-color: red; margin-right: 5px;"></div> <div style="width: 79%; height: 10px; background-color: green; margin-right: 5px;"></div> <div style="width: 12%; height: 10px; background-color: yellow; margin-right: 5px;"></div> <div style="width: 9%; height: 10px; background-color: grey;"></div> </div>
1	B	331	<div style="display: flex; align-items: center;"> <div style="width: 4%; height: 10px; background-color: red; margin-right: 5px;"></div> <div style="width: 78%; height: 10px; background-color: green; margin-right: 5px;"></div> <div style="width: 13%; height: 10px; background-color: yellow; margin-right: 5px;"></div> <div style="width: 9%; height: 10px; background-color: grey;"></div> </div>

2 Entry composition [i](#)

There are 5 unique types of molecules in this entry. The entry contains 5313 atoms, of which 0 are hydrogens and 0 are deuteriums.

In the tables below, the ZeroOcc column contains the number of atoms modelled with zero occupancy, the AltConf column contains the number of residues with at least one atom in alternate conformation and the Trace column contains the number of residues modelled with at most 2 atoms.

- Molecule 1 is a protein called Epidermal growth factor receptor.

Mol	Chain	Residues	Atoms					ZeroOcc	AltConf	Trace
			Total	C	N	O	S			
1	A	300	2408	1543	408	437	20	0	1	0
1	B	302	2418	1549	408	442	19	0	1	0

There are 10 discrepancies between the modelled and reference sequences:

Chain	Residue	Modelled	Actual	Comment	Reference
A	692	GLY	-	expression tag	UNP P00533
A	693	SER	THR	expression tag	UNP P00533
A	694	THR	PRO	expression tag	UNP P00533
A	790	MET	THR	engineered mutation	UNP P00533
A	948	ARG	VAL	engineered mutation	UNP P00533
B	692	GLY	-	expression tag	UNP P00533
B	693	SER	THR	expression tag	UNP P00533
B	694	THR	PRO	expression tag	UNP P00533
B	790	MET	THR	engineered mutation	UNP P00533
B	948	ARG	VAL	engineered mutation	UNP P00533

- Molecule 2 is MAGNESIUM ION (three-letter code: MG) (formula: Mg).

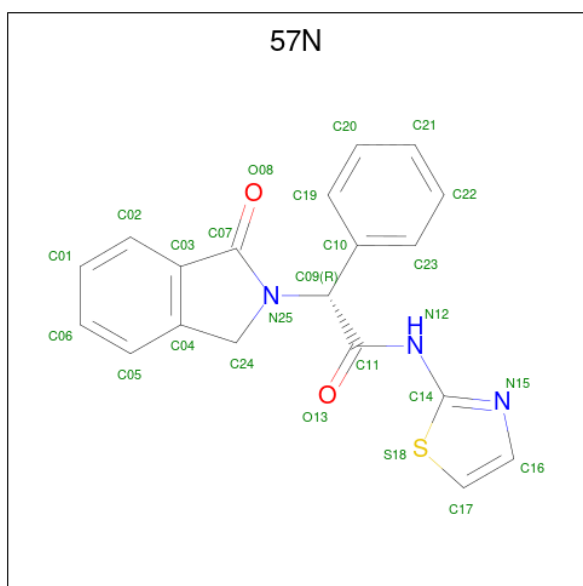
Mol	Chain	Residues	Atoms		ZeroOcc	AltConf
			Total	Mg		
2	A	1	1	1	0	0
2	B	1	1	1	0	0

- Molecule 3 is PHOSPHOAMINOPHOSPHONIC ACID-ADENYLATE ESTER (three-letter code: ANP) (formula: C₁₀H₁₇N₆O₁₂P₃).



Mol	Chain	Residues	Atoms					ZeroOcc	AltConf
			Total	C	N	O	P		
3	A	1	31	10	6	12	3	0	0
3	B	1	31	10	6	12	3	0	0

- Molecule 4 is (2R)-2-(1-oxo-1,3-dihydro-2H-isoindol-2-yl)-2-phenyl-N-(1,3-thiazol-2-yl)acetamide (three-letter code: 57N) (formula: C₁₉H₁₅N₃O₂S).



Mol	Chain	Residues	Atoms					ZeroOcc	AltConf
			Total	C	N	O	S		
4	A	1	25	19	3	2	1	0	0

- Molecule 5 is water.

Mol	Chain	Residues	Atoms		ZeroOcc	AltConf
5	A	215	Total 215	O 215	0	0
5	B	183	Total 183	O 183	0	0

4 Data and refinement statistics

Property	Value	Source
Space group	C 1 2 1	Depositor
Cell constants a, b, c, α , β , γ	155.13Å 72.50Å 76.00Å 90.00° 113.24° 90.00°	Depositor
Resolution (Å)	42.24 – 2.31 43.69 – 2.31	Depositor EDS
% Data completeness (in resolution range)	97.7 (42.24-2.31) 97.6 (43.69-2.31)	Depositor EDS
R_{merge}	0.11	Depositor
R_{sym}	(Not available)	Depositor
$\langle I/\sigma(I) \rangle$ ¹	2.36 (at 2.32Å)	Xtrriage
Refinement program	PHENIX 1.9_1692	Depositor
R, R_{free}	0.174 , 0.207 0.182 , 0.207	Depositor DCC
R_{free} test set	1687 reflections (5.05%)	wwPDB-VP
Wilson B-factor (Å ²)	29.0	Xtrriage
Anisotropy	0.249	Xtrriage
Bulk solvent k_{sol} (e/Å ³), B_{sol} (Å ²)	0.36 , 51.7	EDS
L-test for twinning ²	$\langle L \rangle = 0.49$, $\langle L^2 \rangle = 0.32$	Xtrriage
Estimated twinning fraction	No twinning to report.	Xtrriage
F_o, F_c correlation	0.95	EDS
Total number of atoms	5313	wwPDB-VP
Average B, all atoms (Å ²)	33.0	wwPDB-VP

Xtrriage's analysis on translational NCS is as follows: *The analyses of the Patterson function reveals a significant off-origin peak that is 42.99 % of the origin peak, indicating pseudo-translational symmetry. The chance of finding a peak of this or larger height randomly in a structure without pseudo-translational symmetry is equal to 1.8822e-04. The detected translational NCS is most likely also responsible for the elevated intensity ratio.*

¹Intensities estimated from amplitudes.

²Theoretical values of $\langle |L| \rangle$, $\langle L^2 \rangle$ for acentric reflections are 0.5, 0.333 respectively for untwinned datasets, and 0.375, 0.2 for perfectly twinned datasets.

5 Model quality [i](#)

5.1 Standard geometry [i](#)

Bond lengths and bond angles in the following residue types are not validated in this section: 57N, MG, ANP

The Z score for a bond length (or angle) is the number of standard deviations the observed value is removed from the expected value. A bond length (or angle) with $|Z| > 5$ is considered an outlier worth inspection. RMSZ is the root-mean-square of all Z scores of the bond lengths (or angles).

Mol	Chain	Bond lengths		Bond angles	
		RMSZ	# Z >5	RMSZ	# Z >5
1	A	0.40	0/2464	0.55	0/3336
1	B	0.44	0/2472	0.54	0/3345
All	All	0.42	0/4936	0.54	0/6681

There are no bond length outliers.

There are no bond angle outliers.

There are no chirality outliers.

There are no planarity outliers.

5.2 Too-close contacts [i](#)

In the following table, the Non-H and H(model) columns list the number of non-hydrogen atoms and hydrogen atoms in the chain respectively. The H(added) column lists the number of hydrogen atoms added and optimized by MolProbity. The Clashes column lists the number of clashes within the asymmetric unit, whereas Symm-Clashes lists symmetry-related clashes.

Mol	Chain	Non-H	H(model)	H(added)	Clashes	Symm-Clashes
1	A	2408	0	2430	31	0
1	B	2418	0	2435	32	0
2	A	1	0	0	0	0
2	B	1	0	0	0	0
3	A	31	0	12	0	0
3	B	31	0	12	2	0
4	A	25	0	0	1	0
5	A	215	0	0	10	2
5	B	183	0	0	14	2
All	All	5313	0	4889	62	2

The all-atom clashscore is defined as the number of clashes found per 1000 atoms (including

hydrogen atoms). The all-atom clashscore for this structure is 6.

All (62) close contacts within the same asymmetric unit are listed below, sorted by their clash magnitude.

Atom-1	Atom-2	Interatomic distance (Å)	Clash overlap (Å)
1:A:806:LYS:HG3	1:A:807:ASP:OD1	1.59	1.01
1:A:986:ARG:NH1	5:A:1201:HOH:O	1.95	0.99
3:B:2001:ANP:O1B	5:B:2101:HOH:O	1.85	0.92
1:B:766:MET:SD	5:B:2278:HOH:O	2.35	0.83
1:A:962:ARG:NH2	5:A:1203:HOH:O	2.14	0.80
1:B:733:PRO:O	5:B:2102:HOH:O	2.00	0.79
1:A:922:GLU:OE1	5:A:1202:HOH:O	2.02	0.78
1:B:715:ILE:HD11	1:B:730:LEU:HG	1.67	0.77
1:B:985:GLU:OE2	5:B:2103:HOH:O	2.06	0.72
1:A:876:VAL:N	5:A:1207:HOH:O	2.23	0.71
1:B:759:ILE:HD13	1:B:786:VAL:HG21	1.72	0.70
1:B:1006:ASP:OD2	5:B:2104:HOH:O	2.11	0.69
1:A:962:ARG:NH1	5:A:1208:HOH:O	2.26	0.68
1:B:1004:GLU:OE1	5:B:2106:HOH:O	2.14	0.66
1:A:701:GLN:OE1	5:A:1204:HOH:O	2.14	0.66
1:B:749:GLU:OE2	5:B:2107:HOH:O	2.14	0.65
1:B:999:ARG:NH2	1:B:1005:GLU:O	2.29	0.63
1:A:806:LYS:CG	1:A:807:ASP:OD1	2.45	0.60
1:B:719:GLY:HA3	3:B:2001:ANP:H4'	1.83	0.59
1:B:804:GLU:HB3	5:B:2155:HOH:O	2.03	0.58
1:A:783:THR:O	5:A:1205:HOH:O	2.18	0.57
1:A:715:ILE:HD11	1:A:728:LYS:HE2	1.87	0.56
1:B:949:LYS:HA	1:B:952:MET:HE1	1.87	0.56
1:A:905:TRP:HD1	1:A:947:MET:HE1	1.69	0.55
1:A:882:ALA:HA	1:A:898:TRP:CD2	2.42	0.54
1:B:882:ALA:HA	1:B:898:TRP:CD2	2.43	0.54
1:A:1012:ASP:OD1	1:A:1013:ALA:N	2.41	0.54
1:B:949:LYS:HG2	1:B:959:PRO:HD3	1.92	0.52
1:B:832:ARG:NH2	5:B:2123:HOH:O	2.42	0.52
1:B:986:ARG:NH2	5:B:2116:HOH:O	2.36	0.52
1:B:760:LEU:HD13	1:B:782:LEU:HD11	1.92	0.52
1:A:835:HIS:CD2	1:A:856:PHE:HB3	2.46	0.50
1:A:1004:GLU:OE1	1:B:1005:GLU:HG3	2.11	0.50
1:B:982:GLN:NE2	5:B:2125:HOH:O	2.47	0.47
1:B:769:VAL:HG21	1:B:856:PHE:CZ	2.50	0.47
1:B:905:TRP:HB2	1:B:947:MET:HE1	1.97	0.47
1:B:809:ILE:O	5:B:2108:HOH:O	2.20	0.47
1:A:804:GLU:OE1	1:B:737:LYS:HD2	2.15	0.46

Continued on next page...

Continued from previous page...

Atom-1	Atom-2	Interatomic distance (Å)	Clash overlap (Å)
1:B:707:LEU:HD13	1:B:789:ILE:HD13	1.97	0.46
1:B:724:GLY:HA2	1:B:748:ARG:HG2	1.97	0.46
1:B:943:VAL:O	1:B:947:MET:HG3	2.17	0.45
1:A:802:VAL:HA	1:A:809:ILE:HD11	1.99	0.45
1:A:824:GLY:HA3	1:A:853:ILE:HD12	1.97	0.45
1:A:707:LEU:HD12	1:A:789:ILE:HD13	1.98	0.44
1:B:985:GLU:CD	5:B:2103:HOH:O	2.51	0.44
1:A:1001:LEU:HD12	1:A:1001:LEU:HA	1.68	0.43
1:A:698:ALA:HA	1:A:699:PRO:HD3	1.87	0.43
1:A:1007:MET:HG2	1:A:1008:ASP:H	1.83	0.43
1:A:1007:MET:C	5:A:1209:HOH:O	2.56	0.43
1:A:806:LYS:HB2	1:A:910:PHE:HB3	2.00	0.43
1:A:835:HIS:O	1:A:836:ARG:HB2	2.19	0.43
1:B:800:ASP:O	1:B:804:GLU:HG3	2.19	0.42
1:B:709:GLU:CD	1:B:783:THR:HG21	2.39	0.42
1:A:740:ILE:HG21	1:B:1002:MET:HE2	2.01	0.41
1:A:808:ASN:HA	1:A:987:MET:HE2	2.02	0.41
4:A:1103:57N:O13	4:A:1103:57N:S18	2.79	0.41
1:B:991:SER:HB2	5:B:2167:HOH:O	2.21	0.41
1:B:793:MET:HA	1:B:794:PRO:HD2	1.94	0.40
1:A:811:SER:OG	1:A:975:PRO:HB2	2.21	0.40
1:A:999:ARG:HA	1:A:1003:ASP:HB3	2.03	0.40
1:A:698:ALA:N	5:A:1233:HOH:O	2.54	0.40
1:A:962:ARG:NH1	5:A:1228:HOH:O	2.52	0.40

All (2) symmetry-related close contacts are listed below. The label for Atom-2 includes the symmetry operator and encoded unit-cell translations to be applied.

Atom-1	Atom-2	Interatomic distance (Å)	Clash overlap (Å)
5:A:1378:HOH:O	5:B:2190:HOH:O[4_455]	1.85	0.35
5:A:1355:HOH:O	5:B:2203:HOH:O[4_445]	2.14	0.06

5.3 Torsion angles [i](#)

5.3.1 Protein backbone [i](#)

In the following table, the Percentiles column shows the percent Ramachandran outliers of the chain as a percentile score with respect to all X-ray entries followed by that with respect to entries of similar resolution.

The Analysed column shows the number of residues for which the backbone conformation was analysed, and the total number of residues.

Mol	Chain	Analysed	Favoured	Allowed	Outliers	Percentiles	
1	A	297/331 (90%)	288 (97%)	9 (3%)	0	100	100
1	B	299/331 (90%)	290 (97%)	9 (3%)	0	100	100
All	All	596/662 (90%)	578 (97%)	18 (3%)	0	100	100

There are no Ramachandran outliers to report.

5.3.2 Protein sidechains [i](#)

In the following table, the Percentiles column shows the percent sidechain outliers of the chain as a percentile score with respect to all X-ray entries followed by that with respect to entries of similar resolution.

The Analysed column shows the number of residues for which the sidechain conformation was analysed, and the total number of residues.

Mol	Chain	Analysed	Rotameric	Outliers	Percentiles	
1	A	266/290 (92%)	266 (100%)	0	100	100
1	B	265/290 (91%)	264 (100%)	1 (0%)	91	96
All	All	531/580 (92%)	530 (100%)	1 (0%)	93	97

All (1) residues with a non-rotameric sidechain are listed below:

Mol	Chain	Res	Type
1	B	998	TYR

Sometimes sidechains can be flipped to improve hydrogen bonding and reduce clashes. There are no such sidechains identified.

5.3.3 RNA [i](#)

There are no RNA molecules in this entry.

5.4 Non-standard residues in protein, DNA, RNA chains [i](#)

There are no non-standard protein/DNA/RNA residues in this entry.

5.5 Carbohydrates [i](#)

There are no monosaccharides in this entry.

5.6 Ligand geometry [i](#)

Of 5 ligands modelled in this entry, 2 are monoatomic - leaving 3 for Mogul analysis.

In the following table, the Counts columns list the number of bonds (or angles) for which Mogul statistics could be retrieved, the number of bonds (or angles) that are observed in the model and the number of bonds (or angles) that are defined in the Chemical Component Dictionary. The Link column lists molecule types, if any, to which the group is linked. The Z score for a bond length (or angle) is the number of standard deviations the observed value is removed from the expected value. A bond length (or angle) with $|Z| > 2$ is considered an outlier worth inspection. RMSZ is the root-mean-square of all Z scores of the bond lengths (or angles).

Mol	Type	Chain	Res	Link	Bond lengths			Bond angles		
					Counts	RMSZ	# Z > 2	Counts	RMSZ	# Z > 2
3	ANP	A	1102	2	29,33,33	4.86	16 (55%)	31,52,52	2.53	7 (22%)
3	ANP	B	2001	2	29,33,33	5.10	15 (51%)	31,52,52	2.58	5 (16%)
4	57N	A	1103	-	26,28,28	5.43	21 (80%)	30,39,39	3.71	9 (30%)

In the following table, the Chirals column lists the number of chiral outliers, the number of chiral centers analysed, the number of these observed in the model and the number defined in the Chemical Component Dictionary. Similar counts are reported in the Torsion and Rings columns. '-' means no outliers of that kind were identified.

Mol	Type	Chain	Res	Link	Chirals	Torsions	Rings
3	ANP	A	1102	2	-	1/14/38/38	0/3/3/3
3	ANP	B	2001	2	-	1/14/38/38	0/3/3/3
4	57N	A	1103	-	-	0/14/28/28	0/4/4/4

All (52) bond length outliers are listed below:

Mol	Chain	Res	Type	Atoms	Z	Observed(Å)	Ideal(Å)
3	B	2001	ANP	C2'-C1'	-14.79	1.31	1.53
3	B	2001	ANP	O4'-C1'	14.32	1.61	1.41
3	A	1102	ANP	C2'-C1'	-13.64	1.33	1.53
3	A	1102	ANP	O4'-C1'	13.24	1.59	1.41
3	A	1102	ANP	PB-O3A	10.45	1.72	1.59
3	B	2001	ANP	PB-O3A	10.35	1.72	1.59
4	A	1103	57N	C07-N25	9.90	1.45	1.36
4	A	1103	57N	C02-C03	9.40	1.54	1.39
4	A	1103	57N	C05-C04	8.84	1.54	1.39

Continued on next page...

Continued from previous page...

Mol	Chain	Res	Type	Atoms	Z	Observed(Å)	Ideal(Å)
4	A	1103	57N	C23-C10	8.60	1.53	1.39
4	A	1103	57N	C19-C10	8.32	1.52	1.39
4	A	1103	57N	C22-C23	6.44	1.52	1.38
4	A	1103	57N	C20-C19	6.33	1.52	1.38
3	B	2001	ANP	PB-O1B	6.25	1.56	1.46
4	A	1103	57N	C01-C02	6.25	1.52	1.38
3	A	1102	ANP	C2-N3	6.00	1.41	1.32
4	A	1103	57N	C06-C05	5.75	1.51	1.38
4	A	1103	57N	C22-C21	5.65	1.53	1.38
3	A	1102	ANP	PG-N3B	5.59	1.78	1.63
3	B	2001	ANP	PG-N3B	5.42	1.77	1.63
4	A	1103	57N	C21-C20	5.32	1.52	1.38
3	B	2001	ANP	C2-N3	5.25	1.40	1.32
3	A	1102	ANP	O3'-C3'	-5.12	1.30	1.43
3	B	2001	ANP	O3'-C3'	-5.09	1.31	1.43
3	B	2001	ANP	O4'-C4'	-4.97	1.33	1.45
4	A	1103	57N	C06-C01	4.84	1.50	1.38
3	A	1102	ANP	PB-O1B	4.80	1.53	1.46
4	A	1103	57N	C03-C04	4.68	1.45	1.39
3	A	1102	ANP	O4'-C4'	-4.66	1.34	1.45
4	A	1103	57N	C16-N15	4.07	1.56	1.37
4	A	1103	57N	C17-S18	-4.06	1.51	1.71
4	A	1103	57N	C14-N12	4.01	1.43	1.36
4	A	1103	57N	C11-N12	3.85	1.44	1.35
3	B	2001	ANP	PG-O3G	-3.75	1.46	1.56
3	B	2001	ANP	O5'-C5'	-3.56	1.31	1.44
3	A	1102	ANP	O5'-C5'	-3.52	1.31	1.44
3	B	2001	ANP	C5-C4	-3.42	1.31	1.40
3	A	1102	ANP	C5-C4	-3.13	1.32	1.40
3	A	1102	ANP	PG-O3G	-3.05	1.48	1.56
4	A	1103	57N	C09-N25	-2.99	1.43	1.46
3	B	2001	ANP	PB-N3B	2.91	1.71	1.63
3	A	1102	ANP	C4-N3	2.86	1.39	1.35
3	B	2001	ANP	C6-N6	2.80	1.44	1.34
3	A	1102	ANP	C6-N6	2.78	1.44	1.34
3	B	2001	ANP	O2'-C2'	2.66	1.49	1.43
3	A	1102	ANP	PB-N3B	2.66	1.70	1.63
3	A	1102	ANP	O2'-C2'	2.64	1.49	1.43
4	A	1103	57N	O13-C11	-2.53	1.18	1.23
3	A	1102	ANP	PA-O5'	2.42	1.69	1.59
3	B	2001	ANP	PA-O5'	2.42	1.69	1.59
4	A	1103	57N	C09-C11	-2.41	1.51	1.54

Continued on next page...

Continued from previous page...

Mol	Chain	Res	Type	Atoms	Z	Observed(Å)	Ideal(Å)
4	A	1103	57N	C03-C07	2.17	1.52	1.48

All (21) bond angle outliers are listed below:

Mol	Chain	Res	Type	Atoms	Z	Observed(°)	Ideal(°)
4	A	1103	57N	C04-C24-N25	15.26	107.26	102.18
4	A	1103	57N	C24-N25-C07	-9.45	109.23	113.12
3	B	2001	ANP	C5-C6-N6	9.09	134.16	120.35
3	A	1102	ANP	C5-C6-N6	8.89	133.86	120.35
3	B	2001	ANP	N6-C6-N1	-6.03	106.05	118.57
3	B	2001	ANP	N3-C2-N1	-5.97	119.34	128.68
3	A	1102	ANP	N6-C6-N1	-5.75	106.64	118.57
3	A	1102	ANP	N3-C2-N1	-5.71	119.75	128.68
4	A	1103	57N	C24-N25-C09	4.35	127.92	123.86
3	B	2001	ANP	O1G-PG-N3B	-4.27	105.49	111.77
4	A	1103	57N	C14-N12-C11	-3.95	120.23	129.02
4	A	1103	57N	C10-C09-N25	-3.17	108.83	112.15
3	A	1102	ANP	O1B-PB-N3B	-3.16	107.11	111.77
3	A	1102	ANP	C3'-C2'-C1'	3.07	105.60	100.98
4	A	1103	57N	C24-C04-C03	-2.84	107.98	109.75
3	B	2001	ANP	PB-O3A-PA	-2.74	122.96	132.62
3	A	1102	ANP	PB-O3A-PA	-2.73	123.00	132.62
4	A	1103	57N	C23-C10-C19	2.46	121.36	118.29
4	A	1103	57N	C10-C09-C11	-2.36	107.43	112.06
4	A	1103	57N	O08-C07-N25	-2.18	123.61	125.24
3	A	1102	ANP	C5'-C4'-C3'	-2.13	107.21	115.18

There are no chirality outliers.

All (2) torsion outliers are listed below:

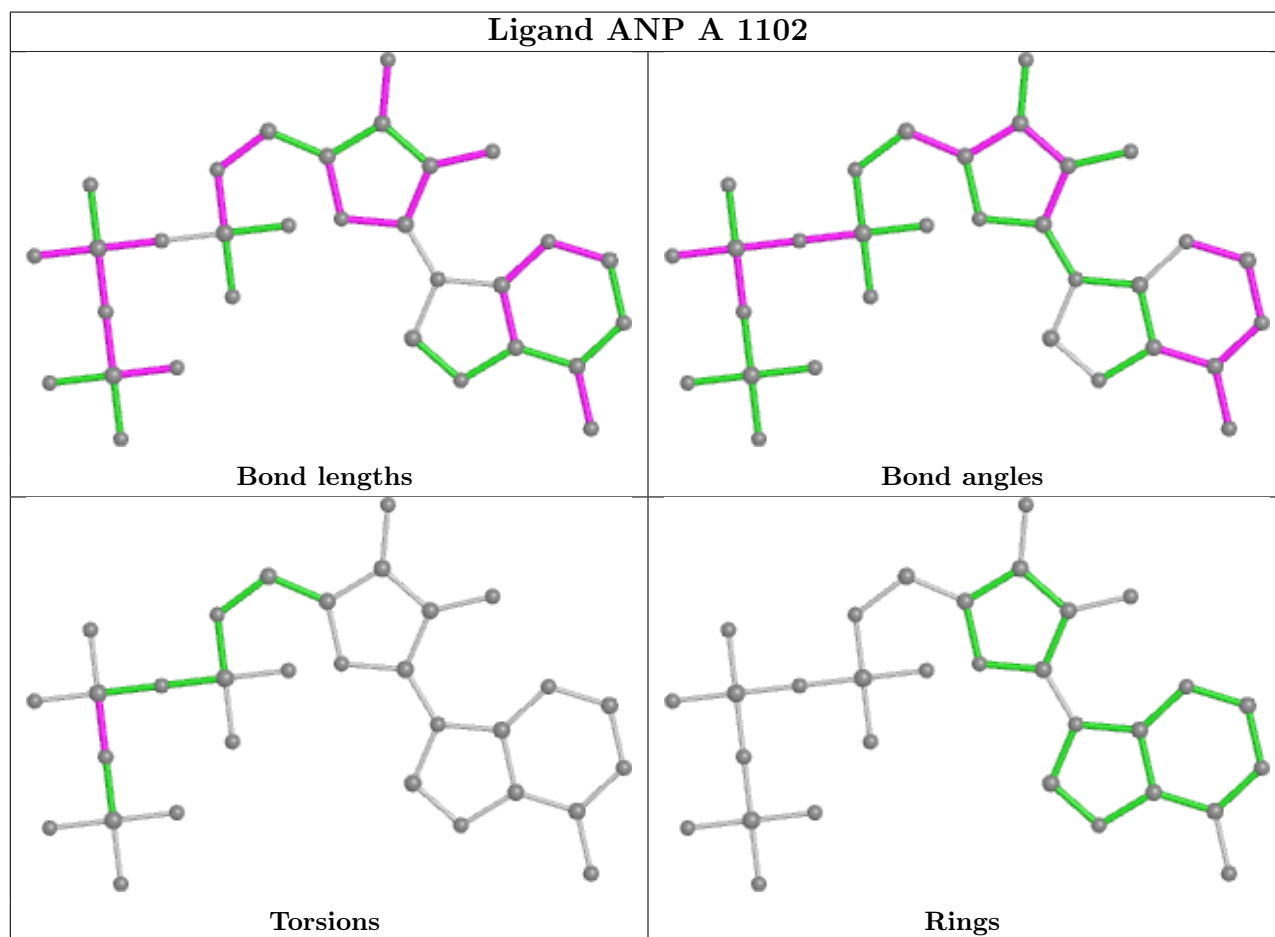
Mol	Chain	Res	Type	Atoms
3	A	1102	ANP	PG-N3B-PB-O1B
3	B	2001	ANP	PB-N3B-PG-O1G

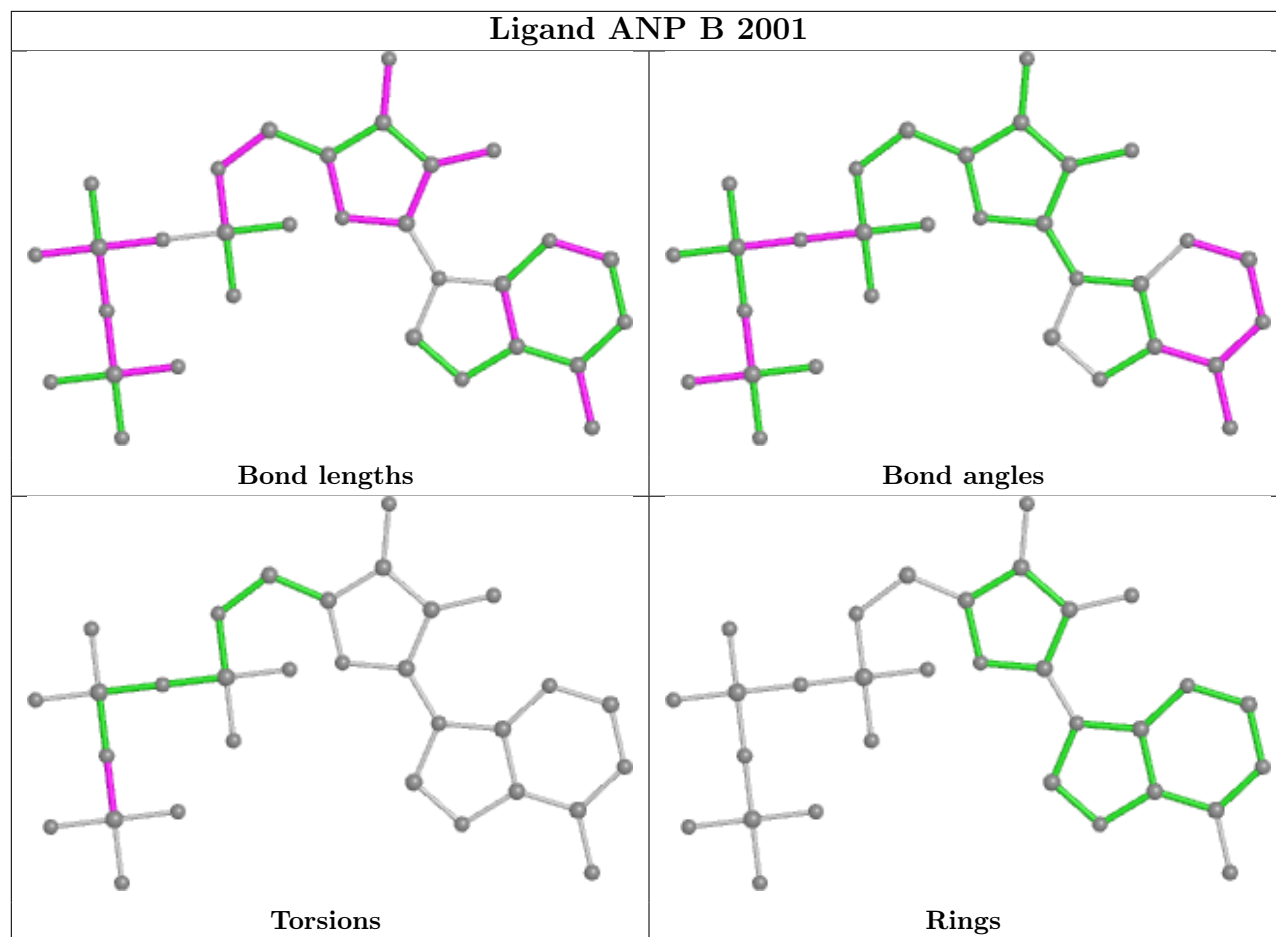
There are no ring outliers.

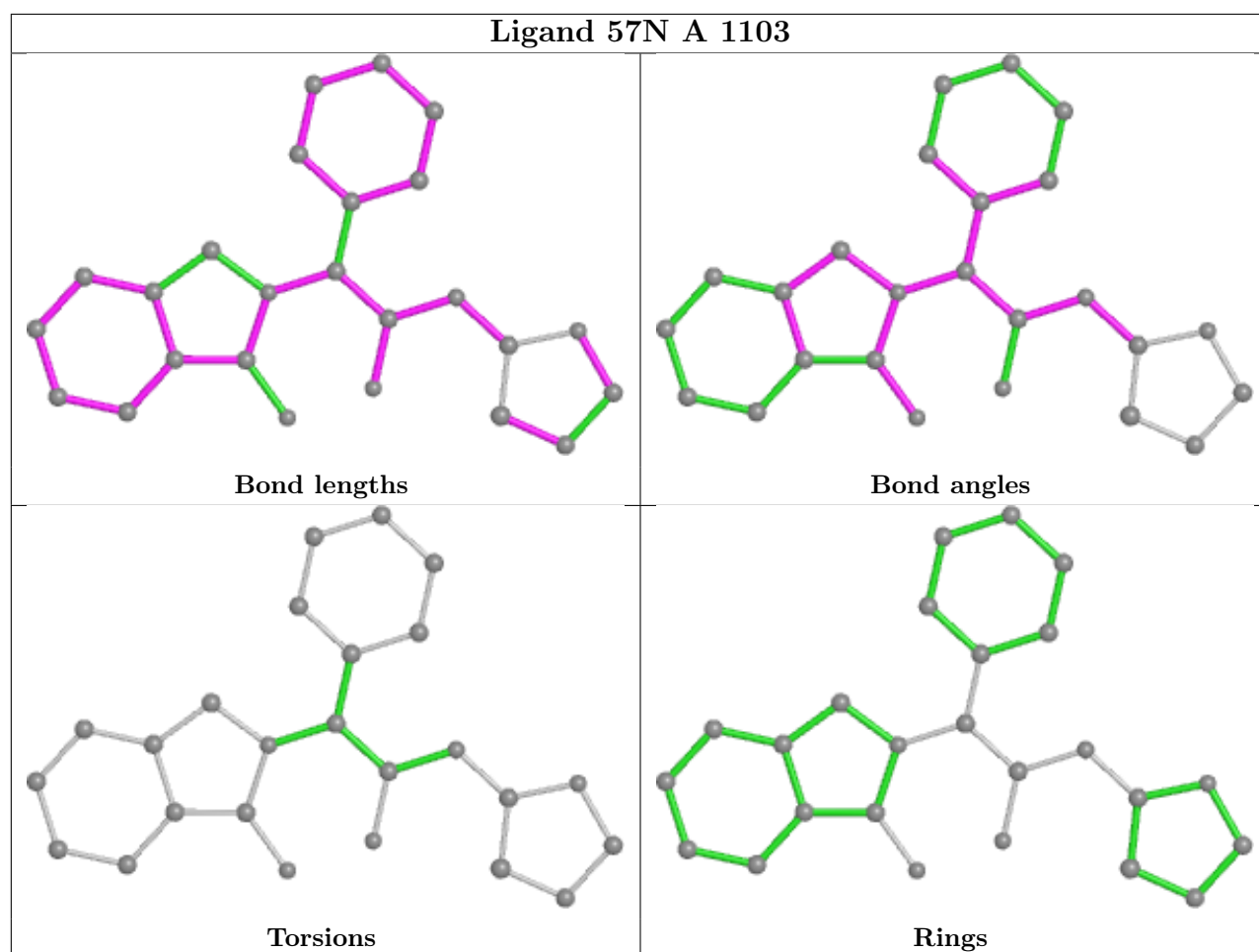
2 monomers are involved in 3 short contacts:

Mol	Chain	Res	Type	Clashes	Symm-Clashes
3	B	2001	ANP	2	0
4	A	1103	57N	1	0

The following is a two-dimensional graphical depiction of Mogul quality analysis of bond lengths, bond angles, torsion angles, and ring geometry for all instances of the Ligand of Interest. In addition, ligands with molecular weight > 250 and outliers as shown on the validation Tables will also be included. For torsion angles, if less than 5% of the Mogul distribution of torsion angles is within 10 degrees of the torsion angle in question, then that torsion angle is considered an outlier. Any bond that is central to one or more torsion angles identified as an outlier by Mogul will be highlighted in the graph. For rings, the root-mean-square deviation (RMSD) between the ring in question and similar rings identified by Mogul is calculated over all ring torsion angles. If the average RMSD is greater than 60 degrees and the minimal RMSD between the ring in question and any Mogul-identified rings is also greater than 60 degrees, then that ring is considered an outlier. The outliers are highlighted in purple. The color gray indicates Mogul did not find sufficient equivalents in the CSD to analyse the geometry.







5.7 Other polymers [i](#)

There are no such residues in this entry.

5.8 Polymer linkage issues [i](#)

There are no chain breaks in this entry.

6 Fit of model and data

6.1 Protein, DNA and RNA chains

In the following table, the column labelled ‘#RSRZ > 2’ contains the number (and percentage) of RSRZ outliers, followed by percent RSRZ outliers for the chain as percentile scores relative to all X-ray entries and entries of similar resolution. The OWAB column contains the minimum, median, 95th percentile and maximum values of the occupancy-weighted average B-factor per residue. The column labelled ‘Q < 0.9’ lists the number of (and percentage) of residues with an average occupancy less than 0.9.

Mol	Chain	Analysed	<RSRZ>	#RSRZ>2	OWAB(Å ²)	Q<0.9
1	A	300/331 (90%)	0.00	17 (5%) 23 30	17, 29, 61, 76	0
1	B	302/331 (91%)	0.07	13 (4%) 35 42	18, 31, 62, 99	0
All	All	602/662 (90%)	0.04	30 (4%) 28 36	17, 30, 61, 99	0

All (30) RSRZ outliers are listed below:

Mol	Chain	Res	Type	RSRZ
1	B	861	LEU	7.9
1	A	698	ALA	6.6
1	B	750	ALA	4.8
1	B	752	SER	4.6
1	B	859	ALA	4.0
1	B	753	PRO	3.7
1	B	751	THR	3.6
1	A	1013	ALA	3.6
1	A	753	PRO	3.6
1	B	723	PHE	3.4
1	A	989	LEU	3.3
1	A	807	ASP	3.1
1	B	784	SER	2.9
1	A	752	SER	2.8
1	A	1007	MET	2.8
1	A	988	HIS	2.7
1	B	755	ALA	2.7
1	B	862	LEU	2.6
1	B	749	GLU	2.6
1	A	760	LEU	2.5
1	A	986	ARG	2.4
1	A	701	GLN	2.3
1	A	764	TYR	2.3
1	A	784	SER	2.3

Continued on next page...

Continued from previous page...

Mol	Chain	Res	Type	RSRZ
1	B	754	LYS	2.2
1	B	875	LYS	2.2
1	A	699	PRO	2.2
1	A	1014	ASP	2.1
1	A	783	THR	2.1
1	A	1012	ASP	2.1

6.2 Non-standard residues in protein, DNA, RNA chains [i](#)

There are no non-standard protein/DNA/RNA residues in this entry.

6.3 Carbohydrates [i](#)

There are no monosaccharides in this entry.

6.4 Ligands [i](#)

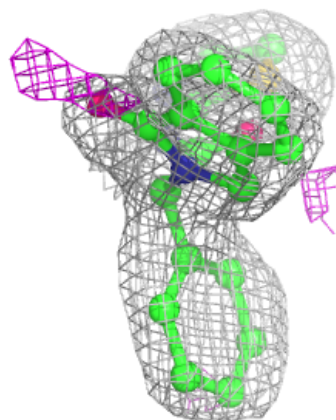
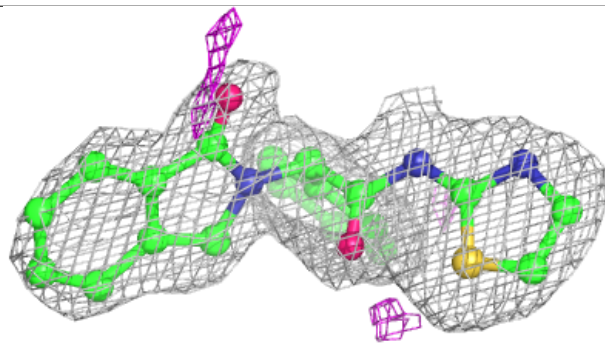
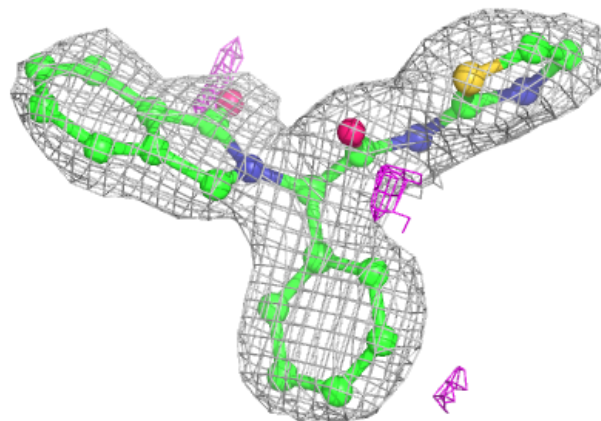
In the following table, the Atoms column lists the number of modelled atoms in the group and the number defined in the chemical component dictionary. The B-factors column lists the minimum, median, 95th percentile and maximum values of B factors of atoms in the group. The column labelled 'Q<0.9' lists the number of atoms with occupancy less than 0.9.

Mol	Type	Chain	Res	Atoms	RSCC	RSR	B-factors(\AA^2)	Q<0.9
2	MG	B	2000	1/1	0.96	0.08	26,26,26,26	0
4	57N	A	1103	25/25	0.96	0.17	15,26,36,42	0
3	ANP	A	1102	31/31	0.98	0.13	16,20,25,28	0
3	ANP	B	2001	31/31	0.98	0.12	20,28,43,46	0
2	MG	A	1101	1/1	0.98	0.06	20,20,20,20	0

The following is a graphical depiction of the model fit to experimental electron density of all instances of the Ligand of Interest. In addition, ligands with molecular weight > 250 and outliers as shown on the geometry validation Tables will also be included. Each fit is shown from different orientation to approximate a three-dimensional view.

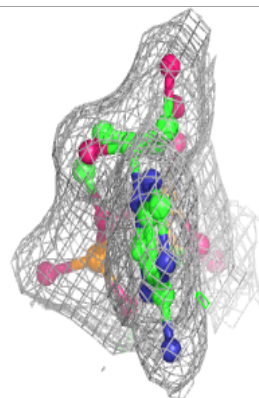
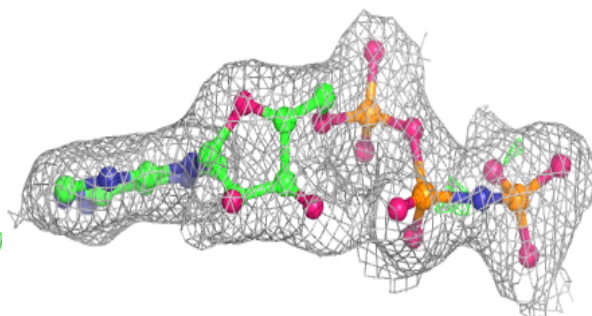
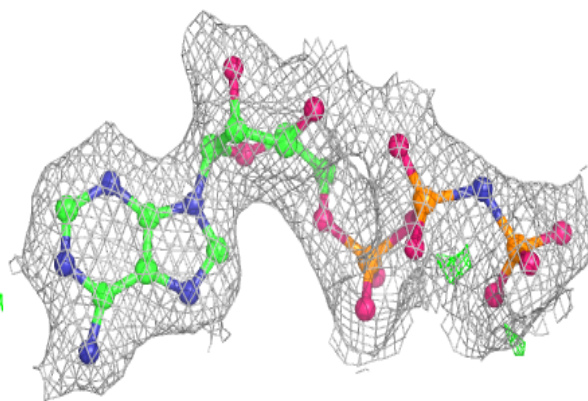
Electron density around 57N A 1103:

$2mF_o-DF_c$ (at 0.7 rmsd) in gray
 mF_o-DF_c (at 3 rmsd) in purple (negative)
and green (positive)

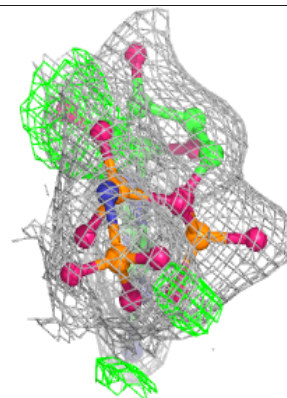
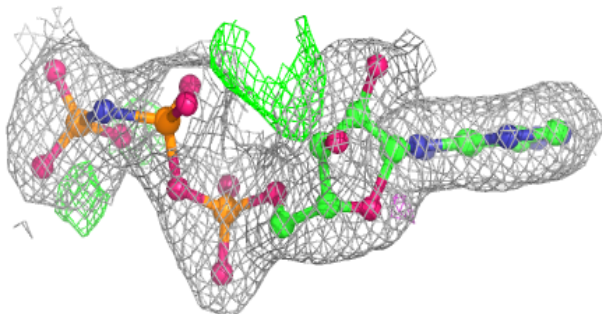
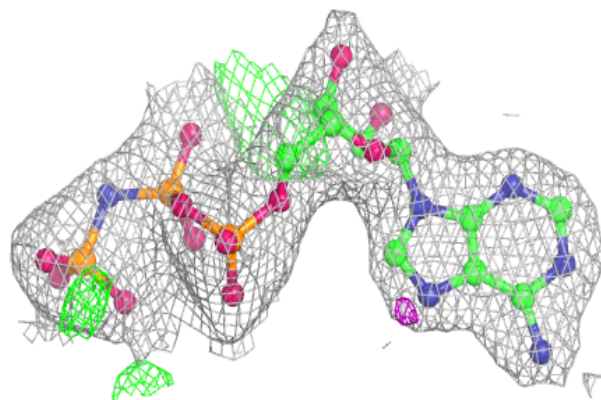


Electron density around ANP A 1102:

$2mF_o-DF_c$ (at 0.7 rmsd) in gray
 mF_o-DF_c (at 3 rmsd) in purple (negative)
and green (positive)

**Electron density around ANP B 2001:**

$2mF_o-DF_c$ (at 0.7 rmsd) in gray
 mF_o-DF_c (at 3 rmsd) in purple (negative)
and green (positive)



6.5 Other polymers [i](#)

There are no such residues in this entry.