



Full wwPDB X-ray Structure Validation Report ⓘ

Oct 1, 2024 – 12:22 AM JST

PDB ID : 4YZO
Title : Crystal Structure Analysis of Thiolase-like protein, ST0096 from Sulfolobus Tokodaii
Authors : Padmanabhan, B.; Manjula, R.; Yokoyama, S.; Bessho, Y.
Deposited on : 2015-03-25
Resolution : 1.70 Å(reported)

This is a Full wwPDB X-ray Structure Validation Report for a publicly released PDB entry.

We welcome your comments at validation@mail.wwpdb.org

A user guide is available at

<https://www.wwpdb.org/validation/2017/XrayValidationReportHelp>

with specific help available everywhere you see the ⓘ symbol.

The types of validation reports are described at

<http://www.wwpdb.org/validation/2017/FAQs#types>.

The following versions of software and data (see [references ⓘ](#)) were used in the production of this report:

MolProbity : 4.02b-467
Mogul : 1.8.5 (274361), CSD as541be (2020)
Xtriage (Phenix) : 1.13
EDS : 3.0
Percentile statistics : 20231227.v01 (using entries in the PDB archive December 27th 2023)
CCP4 : 9.0.003 (Gargrove)
Density-Fitness : 1.0.11
Ideal geometry (proteins) : Engh & Huber (2001)
Ideal geometry (DNA, RNA) : Parkinson et al. (1996)
Validation Pipeline (wwPDB-VP) : 2.39

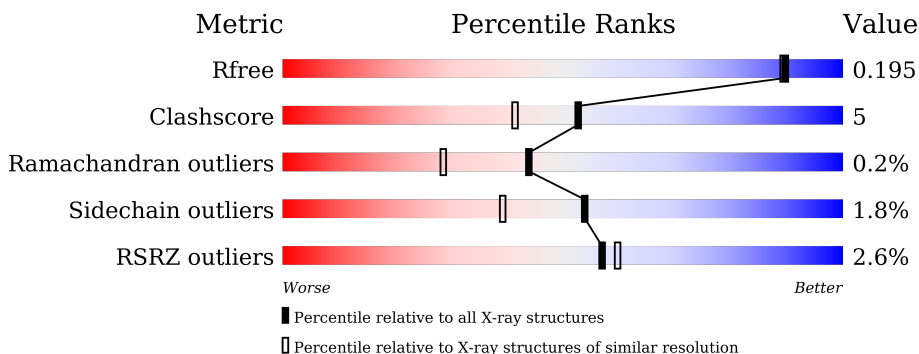
1 Overall quality at a glance

The following experimental techniques were used to determine the structure:

X-RAY DIFFRACTION

The reported resolution of this entry is 1.70 Å.

Percentile scores (ranging between 0-100) for global validation metrics of the entry are shown in the following graphic. The table shows the number of entries on which the scores are based.



Metric	Whole archive (#Entries)	Similar resolution (#Entries, resolution range(Å))
R_{free}	164625	5161 (1.70-1.70)
Clashscore	180529	5671 (1.70-1.70)
Ramachandran outliers	177936	5594 (1.70-1.70)
Sidechain outliers	177891	5594 (1.70-1.70)
RSRZ outliers	164620	5159 (1.70-1.70)

The table below summarises the geometric issues observed across the polymeric chains and their fit to the electron density. The red, orange, yellow and green segments of the lower bar indicate the fraction of residues that contain outliers for ≥ 3 , 2, 1 and 0 types of geometric quality criteria respectively. A grey segment represents the fraction of residues that are not modelled. The numeric value for each fraction is indicated below the corresponding segment, with a dot representing fractions $\leq 5\%$. The upper red bar (where present) indicates the fraction of residues that have poor fit to the electron density. The numeric value is given above the bar.

Mol	Chain	Length	Quality of chain
1	A	373	 5% 88% 8% . .
1	B	373	 2% 86% 9% . 5%
1	C	373	 % 83% 9% . 7%
1	D	373	 % 85% 8% 7%

The following table lists non-polymeric compounds, carbohydrate monomers and non-standard residues in protein, DNA, RNA chains that are outliers for geometric or electron-density-fit crite-

ria:

Mol	Type	Chain	Res	Chirality	Geometry	Clashes	Electron density
2	PEG	C	403	-	-	X	-
3	IMD	A	403	-	-	X	-

2 Entry composition [i](#)

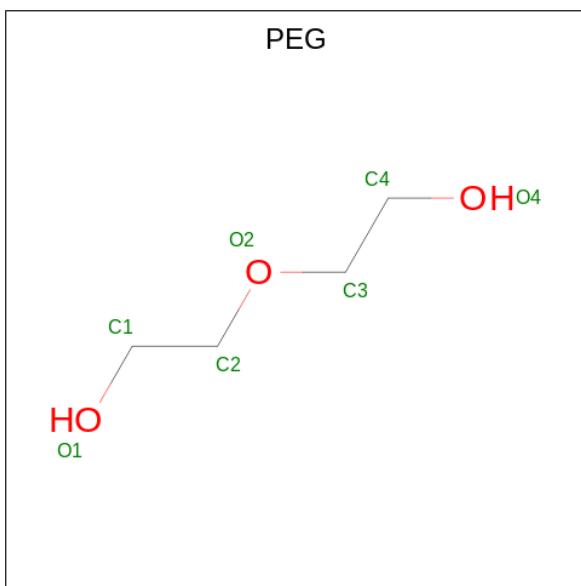
There are 6 unique types of molecules in this entry. The entry contains 12627 atoms, of which 0 are hydrogens and 0 are deuteriums.

In the tables below, the ZeroOcc column contains the number of atoms modelled with zero occupancy, the AltConf column contains the number of residues with at least one atom in alternate conformation and the Trace column contains the number of residues modelled with at most 2 atoms.

- Molecule 1 is a protein called Putative acyl-CoA acyltransferase.

Mol	Chain	Residues	Atoms					ZeroOcc	AltConf	Trace
			Total	C	N	O	Se			
1	A	363	Total 2846	C 1794	N 473	O 573	Se 6	0	17	0
1	B	354	Total 2774	C 1753	N 464	O 551	Se 6	0	14	0
1	C	347	Total 2734	C 1722	N 456	O 550	Se 6	0	15	0
1	D	347	Total 2695	C 1700	N 453	O 536	Se 6	0	10	0

- Molecule 2 is DI(HYDROXYETHYL)ETHER (three-letter code: PEG) (formula: C₄H₁₀O₃).



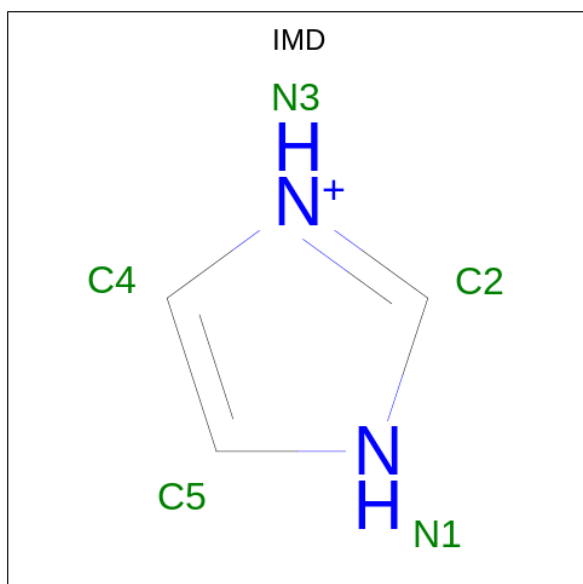
Mol	Chain	Residues	Atoms			ZeroOcc	AltConf
			Total	C	O		
2	A	1	Total 7	C 4	O 3	0	0
2	A	1	Total 7	C 4	O 3	0	0

Continued on next page...

Continued from previous page...

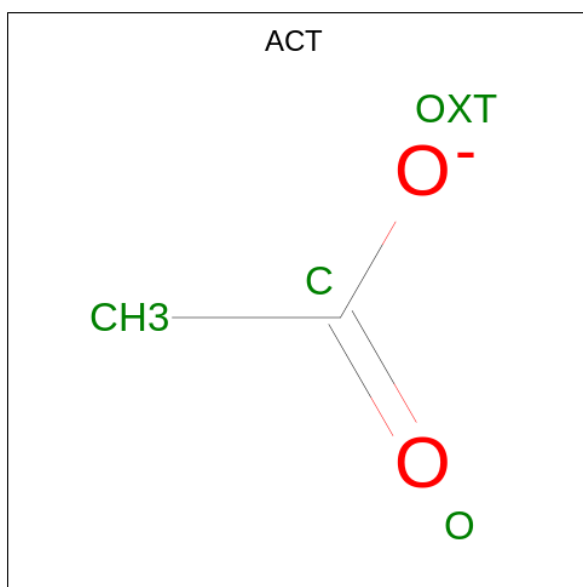
Mol	Chain	Residues	Atoms			ZeroOcc	AltConf
2	B	1	Total	C	O	0	0
			7	4	3		
2	B	1	Total	C	O	0	0
			7	4	3		
2	C	1	Total	C	O	0	0
			7	4	3		
2	C	1	Total	C	O	0	0
			7	4	3		
2	C	1	Total	C	O	0	0
			7	4	3		
2	D	1	Total	C	O	0	0
			7	4	3		

- Molecule 3 is IMIDAZOLE (three-letter code: IMD) (formula: C₃H₅N₂).



Mol	Chain	Residues	Atoms			ZeroOcc	AltConf
3	A	1	Total	C	N	0	0
			5	3	2		

- Molecule 4 is ACETATE ION (three-letter code: ACT) (formula: C₂H₃O₂).



Mol	Chain	Residues	Atoms	ZeroOcc	AltConf
4	B	1	Total C O 4 2 2	0	0

- Molecule 5 is CALCIUM ION (three-letter code: CA) (formula: Ca).

Mol	Chain	Residues	Atoms	ZeroOcc	AltConf
5	C	1	Total Ca 1 1	0	0
5	D	1	Total Ca 1 1	0	0

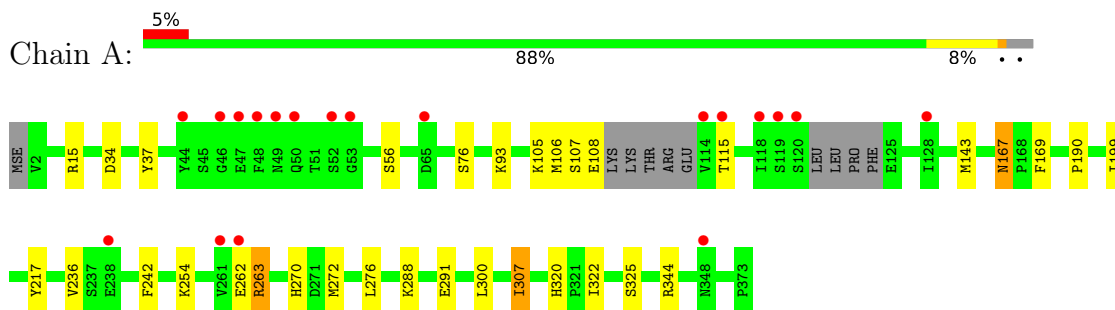
- Molecule 6 is water.

Mol	Chain	Residues	Atoms	ZeroOcc	AltConf
6	A	411	Total O 411 411	0	0
6	B	341	Total O 341 341	0	0
6	C	417	Total O 417 417	0	0
6	D	342	Total O 342 342	0	0

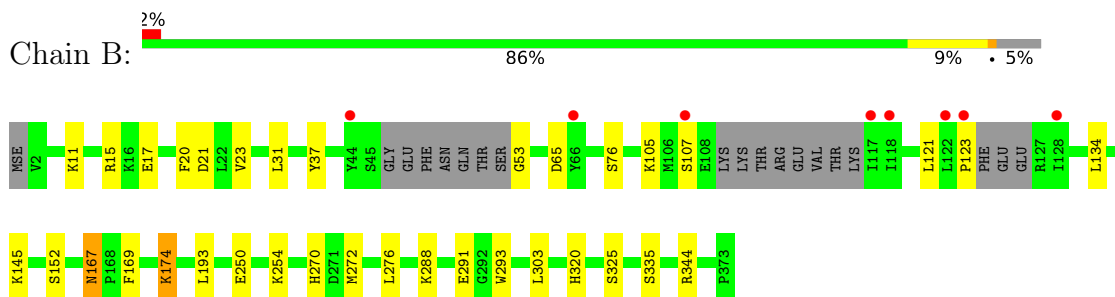
3 Residue-property plots [i](#)

These plots are drawn for all protein, RNA, DNA and oligosaccharide chains in the entry. The first graphic for a chain summarises the proportions of the various outlier classes displayed in the second graphic. The second graphic shows the sequence view annotated by issues in geometry and electron density. Residues are color-coded according to the number of geometric quality criteria for which they contain at least one outlier: green = 0, yellow = 1, orange = 2 and red = 3 or more. A red dot above a residue indicates a poor fit to the electron density ($RSRZ > 2$). Stretches of 2 or more consecutive residues without any outlier are shown as a green connector. Residues present in the sample, but not in the model, are shown in grey.

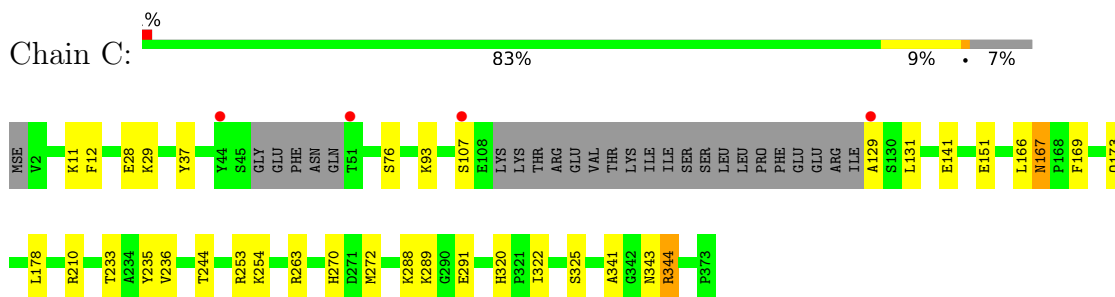
- Molecule 1: Putative acyl-CoA acyltransferase



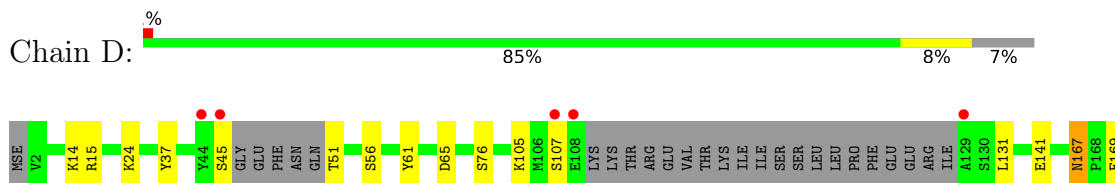
- Molecule 1: Putative acyl-CoA acyltransferase



- Molecule 1: Putative acyl-CoA acyltransferase



- Molecule 1: Putative acyl-CoA acyltransferase





4 Data and refinement statistics

Property	Value	Source
Space group	C 1 2 1	Depositor
Cell constants a, b, c, α , β , γ	152.76Å 80.86Å 137.51Å 90.00° 110.80° 90.00°	Depositor
Resolution (Å)	19.99 – 1.70 19.99 – 1.70	Depositor EDS
% Data completeness (in resolution range)	95.7 (19.99-1.70) 95.7 (19.99-1.70)	Depositor EDS
R_{merge}	0.10	Depositor
R_{sym}	(Not available)	Depositor
$\langle I/\sigma(I) \rangle$ ¹	4.20 (at 1.70Å)	Xtrriage
Refinement program	REFMAC 5.7.0029	Depositor
R, R_{free}	0.162 , 0.194 0.163 , 0.195	Depositor DCC
R_{free} test set	8258 reflections (5.02%)	wwPDB-VP
Wilson B-factor (Å ²)	17.8	Xtrriage
Anisotropy	0.108	Xtrriage
Bulk solvent k_{sol} (e/Å ³), B_{sol} (Å ²)	0.35 , 46.8	EDS
L-test for twinning ²	$\langle L \rangle = 0.49$, $\langle L^2 \rangle = 0.32$	Xtrriage
Estimated twinning fraction	No twinning to report.	Xtrriage
F_o, F_c correlation	0.97	EDS
Total number of atoms	12627	wwPDB-VP
Average B, all atoms (Å ²)	23.0	wwPDB-VP

Xtrriage's analysis on translational NCS is as follows: *The largest off-origin peak in the Patterson function is 3.77% of the height of the origin peak. No significant pseudotranslation is detected.*

¹Intensities estimated from amplitudes.

²Theoretical values of $\langle |L| \rangle$, $\langle L^2 \rangle$ for acentric reflections are 0.5, 0.333 respectively for untwinned datasets, and 0.375, 0.2 for perfectly twinned datasets.

5 Model quality i

5.1 Standard geometry i

Bond lengths and bond angles in the following residue types are not validated in this section: ACT, CA, PEG, IMD

The Z score for a bond length (or angle) is the number of standard deviations the observed value is removed from the expected value. A bond length (or angle) with $|Z| > 5$ is considered an outlier worth inspection. RMSZ is the root-mean-square of all Z scores of the bond lengths (or angles).

Mol	Chain	Bond lengths		Bond angles	
		RMSZ	# Z >5	RMSZ	# Z >5
1	A	0.59	0/2880	0.72	1/3891 (0.0%)
1	B	0.52	0/2807	0.67	1/3787 (0.0%)
1	C	0.60	0/2768	0.74	2/3735 (0.1%)
1	D	0.55	0/2729	0.69	0/3680
All	All	0.57	0/11184	0.71	4/15093 (0.0%)

There are no bond length outliers.

All (4) bond angle outliers are listed below:

Mol	Chain	Res	Type	Atoms	Z	Observed(°)	Ideal(°)
1	B	123	PRO	N-CA-CB	5.92	110.40	103.30
1	C	344	ARG	CG-CD-NE	5.79	123.95	111.80
1	C	210	ARG	NE-CZ-NH2	-5.45	117.58	120.30
1	A	344	ARG	CG-CD-NE	5.37	123.07	111.80

There are no chirality outliers.

There are no planarity outliers.

5.2 Too-close contacts i

In the following table, the Non-H and H(model) columns list the number of non-hydrogen atoms and hydrogen atoms in the chain respectively. The H(added) column lists the number of hydrogen atoms added and optimized by MolProbity. The Clashes column lists the number of clashes within the asymmetric unit, whereas Symm-Clashes lists symmetry-related clashes.

Mol	Chain	Non-H	H(model)	H(added)	Clashes	Symm-Clashes
1	A	2846	0	2831	26	0
1	B	2774	0	2783	24	0
1	C	2734	0	2737	32	0

Continued on next page...

Continued from previous page...

Mol	Chain	Non-H	H(model)	H(added)	Clashes	Symm-Clashes
1	D	2695	0	2712	20	0
2	A	14	0	20	0	0
2	B	14	0	20	3	0
2	C	21	0	30	6	0
2	D	7	0	10	2	0
3	A	5	0	5	8	0
4	B	4	0	3	0	0
5	C	1	0	0	0	0
5	D	1	0	0	0	0
6	A	411	0	0	12	0
6	B	341	0	0	6	0
6	C	417	0	0	11	0
6	D	342	0	0	3	0
All	All	12627	0	11151	109	0

The all-atom clashscore is defined as the number of clashes found per 1000 atoms (including hydrogen atoms). The all-atom clashscore for this structure is 5.

All (109) close contacts within the same asymmetric unit are listed below, sorted by their clash magnitude.

Atom-1	Atom-2	Interatomic distance (Å)	Clash overlap (Å)
1:C:11:LYS:HE2	6:C:505:HOH:O	1.59	1.00
1:C:244[B]:THR:HG22	1:C:289:LYS:HE3	1.44	0.99
1:A:34[B]:ASP:OD2	6:A:501:HOH:O	1.89	0.90
1:A:263:ARG:HH11	1:A:263:ARG:CG	1.84	0.89
1:C:141:GLU:HG2	6:C:723:HOH:O	1.70	0.89
1:B:152[B]:SER:OG	1:B:293:TRP:HB2	1.83	0.78
1:A:263:ARG:HH11	1:A:263:ARG:HG3	1.50	0.76
3:A:403:IMD:N3	6:A:502:HOH:O	2.19	0.75
1:C:320:HIS:HD2	1:C:325:SER:OG	1.70	0.73
1:B:320:HIS:HD2	1:B:325:SER:OG	1.70	0.73
1:A:320:HIS:HD2	1:A:325:SER:OG	1.74	0.70
1:A:236:VAL:HG11	1:A:242:PHE:CZ	2.28	0.68
1:C:28:GLU:O	6:C:501:HOH:O	2.12	0.67
1:A:263:ARG:HH11	1:A:263:ARG:HG2	1.60	0.66
1:C:244[B]:THR:HG22	1:C:289:LYS:CE	2.21	0.66
1:D:320:HIS:HD2	1:D:325:SER:OG	1.80	0.65
1:A:34[B]:ASP:OD1	1:A:217:TYR:OH	2.15	0.63
3:A:403:IMD:C5	6:A:508:HOH:O	2.45	0.63
1:C:93:LYS:HE2	6:C:765:HOH:O	1.99	0.62
1:D:233:THR:HG22	1:D:235:TYR:H	1.64	0.62

Continued on next page...

Continued from previous page...

Atom-1	Atom-2	Interatomic distance (Å)	Clash overlap (Å)
1:C:288:LYS:HB2	1:C:291:GLU:HG3	1.83	0.61
3:A:403:IMD:H4	6:A:501:HOH:O	1.99	0.61
1:A:263:ARG:HG3	1:A:263:ARG:NH1	2.15	0.60
1:D:45:SER:HB2	1:D:51:THR:HG23	1.80	0.60
1:A:263:ARG:NH2	6:A:503:HOH:O	2.33	0.60
1:C:344:ARG:HG3	2:C:403:PEG:O4	2.02	0.59
1:C:244[B]:THR:CG2	1:C:289:LYS:HE3	2.26	0.59
1:A:272:MSE:HE3	1:A:276:LEU:CD1	2.33	0.58
1:B:288:LYS:HB2	1:B:291:GLU:HG3	1.84	0.58
1:D:332:GLU:OE1	2:D:401:PEG:C1	2.51	0.58
1:C:131:LEU:HB3	1:C:272:MSE:HE2	1.84	0.57
3:A:403:IMD:C4	6:A:501:HOH:O	2.51	0.57
3:A:403:IMD:H5	6:A:508:HOH:O	2.02	0.57
1:D:65:ASP:HB2	6:D:709:HOH:O	2.05	0.57
1:C:341:ALA:O	2:C:403:PEG:H41	2.05	0.57
1:A:15:ARG:O	1:A:105:LYS:NZ	2.37	0.56
1:C:173:GLN:NE2	6:C:505:HOH:O	2.38	0.56
1:D:24:LYS:HE2	1:D:61:TYR:CE2	2.40	0.56
1:C:253:ARG:NH2	6:C:502:HOH:O	2.25	0.56
1:A:107:SER:O	1:A:108:GLU:CB	2.53	0.56
1:A:236:VAL:HG11	1:A:242:PHE:HZ	1.68	0.56
1:C:166:LEU:O	2:C:403:PEG:O4	2.14	0.55
6:B:534:HOH:O	1:D:56:SER:HB3	2.06	0.54
1:D:14:LYS:HD2	1:D:107:SER:OG	2.08	0.53
1:B:15:ARG:O	1:B:105:LYS:NZ	2.42	0.52
1:B:167:ASN:C	1:B:167:ASN:HD22	2.13	0.52
1:D:222:VAL:HG21	1:D:334:PHE:HA	1.92	0.52
1:C:270:HIS:HE1	6:C:789:HOH:O	1.93	0.51
1:B:250[B]:GLU:HG3	1:B:254:LYS:HE2	1.92	0.51
1:A:167:ASN:C	1:A:167:ASN:HD22	2.14	0.51
1:B:272:MSE:HE3	1:B:276:LEU:CD1	2.41	0.51
1:A:167:ASN:ND2	1:A:169:PHE:H	2.09	0.50
1:A:272:MSE:HE3	1:A:276:LEU:HD11	1.92	0.50
1:C:167:ASN:HD22	1:C:167:ASN:C	2.15	0.50
1:B:270:HIS:HE1	6:B:738:HOH:O	1.94	0.50
1:B:53:GLY:HA2	6:B:690:HOH:O	2.12	0.50
1:B:272:MSE:HE3	1:B:276:LEU:HD11	1.93	0.49
1:C:167:ASN:ND2	1:C:169:PHE:H	2.09	0.49
1:C:343:ASN:H	2:C:403:PEG:H22	1.77	0.49
1:D:15:ARG:O	1:D:105:LYS:NZ	2.46	0.49
1:C:254:LYS:HE2	6:C:795:HOH:O	2.12	0.48

Continued on next page...

Continued from previous page...

Atom-1	Atom-2	Interatomic distance (Å)	Clash overlap (Å)
1:D:270:HIS:HE1	6:D:733:HOH:O	1.96	0.48
1:A:270:HIS:HE1	6:A:786:HOH:O	1.96	0.48
1:D:167:ASN:HD22	1:D:167:ASN:C	2.16	0.48
1:C:254:LYS:HE2	6:C:731:HOH:O	2.13	0.48
1:A:288:LYS:HB2	1:A:291[A]:GLU:HG3	1.95	0.47
1:B:17:GLU:HB3	1:B:21:ASP:HB2	1.96	0.47
1:C:129:ALA:HB3	1:C:236:VAL:HG21	1.97	0.47
1:C:233:THR:HG22	1:C:235:TYR:H	1.79	0.47
1:D:270:HIS:HD2	6:D:663:HOH:O	1.97	0.47
1:C:343:ASN:H	2:C:403:PEG:C2	2.29	0.46
1:B:167:ASN:ND2	1:B:169:PHE:H	2.14	0.46
1:A:106:MSE:HE2	1:A:199[A]:ILE:HG23	1.98	0.45
1:B:193[A]:LEU:C	1:B:193[A]:LEU:HD23	2.37	0.45
1:C:263:ARG:NH1	6:C:508:HOH:O	2.49	0.45
1:C:76:SER:OG	1:C:320:HIS:HE1	2.00	0.45
1:B:169:PHE:CE2	2:B:402:PEG:H32	2.52	0.45
1:D:141:GLU:OE1	1:D:242:PHE:HB2	2.17	0.45
1:B:145:LYS:NZ	6:B:508:HOH:O	2.50	0.44
1:C:28:GLU:HG3	1:C:29:LYS:HG3	1.98	0.44
1:B:335[A]:SER:OG	2:B:402:PEG:H41	2.18	0.44
1:B:169:PHE:HE2	2:B:402:PEG:H32	1.82	0.44
1:D:131:LEU:HB3	1:D:272:MSE:HE2	1.98	0.44
1:D:241:ASP:C	1:D:241:ASP:OD1	2.56	0.44
1:A:263:ARG:CG	1:A:263:ARG:NH1	2.54	0.44
1:D:332:GLU:OE1	2:D:401:PEG:H11	2.17	0.44
1:D:167:ASN:ND2	1:D:169:PHE:H	2.15	0.43
1:D:76:SER:OG	1:D:320:HIS:HE1	2.00	0.43
1:C:270:HIS:HD2	6:C:725:HOH:O	2.01	0.43
1:B:76:SER:OG	1:B:320:HIS:HE1	2.01	0.43
1:B:193[A]:LEU:HD23	1:B:193[A]:LEU:O	2.19	0.43
1:A:93:LYS:HE3	6:A:623:HOH:O	2.19	0.42
1:B:250[A]:GLU:HG2	6:B:643:HOH:O	2.19	0.42
3:A:403:IMD:C2	6:A:550:HOH:O	2.67	0.42
1:B:174:LYS:HE2	6:B:587:HOH:O	2.19	0.42
1:C:12:PHE:CE2	2:C:401:PEG:H11	2.55	0.42
1:C:151:GLU:HB3	1:C:178:LEU:HD21	2.01	0.42
1:A:34[B]:ASP:OD2	3:A:403:IMD:H4	2.19	0.42
1:C:131:LEU:HB3	1:C:272:MSE:CE	2.50	0.42
1:A:307[A]:ILE:HG23	1:A:307[A]:ILE:O	2.20	0.41
1:A:254:LYS:NZ	6:A:505:HOH:O	2.41	0.41
1:D:189:GLU:CD	1:D:190:PRO:HA	2.40	0.41

Continued on next page...

Continued from previous page...

Atom-1	Atom-2	Interatomic distance (Å)	Clash overlap (Å)
3:A:403:IMD:H2	6:A:550:HOH:O	2.20	0.41
1:A:76[A]:SER:OG	1:A:320:HIS:HE1	2.04	0.41
1:B:303:LEU:HD21	1:B:344:ARG:HA	2.02	0.41
1:C:167:ASN:HB2	1:C:344:ARG:HD3	2.03	0.41
1:B:121:LEU:HD11	1:B:134:LEU:HD21	2.03	0.41
1:B:20:PHE:HA	1:B:23[B]:VAL:HG22	2.02	0.40
1:A:143:MSE:HE1	1:A:190:PRO:HG3	2.02	0.40

There are no symmetry-related clashes.

5.3 Torsion angles [i](#)

5.3.1 Protein backbone [i](#)

In the following table, the Percentiles column shows the percent Ramachandran outliers of the chain as a percentile score with respect to all X-ray entries followed by that with respect to entries of similar resolution.

The Analysed column shows the number of residues for which the backbone conformation was analysed, and the total number of residues.

Mol	Chain	Analysed	Favoured	Allowed	Outliers	Percentiles
1	A	374/373 (100%)	363 (97%)	10 (3%)	1 (0%)	37 23
1	B	360/373 (96%)	353 (98%)	7 (2%)	0	100 100
1	C	356/373 (95%)	348 (98%)	7 (2%)	1 (0%)	37 23
1	D	351/373 (94%)	344 (98%)	6 (2%)	1 (0%)	37 23
All	All	1441/1492 (97%)	1408 (98%)	30 (2%)	3 (0%)	44 29

All (3) Ramachandran outliers are listed below:

Mol	Chain	Res	Type
1	D	240	GLU
1	A	322	ILE
1	C	322	ILE

5.3.2 Protein sidechains [i](#)

In the following table, the Percentiles column shows the percent sidechain outliers of the chain as a percentile score with respect to all X-ray entries followed by that with respect to entries of similar

resolution.

The Analysed column shows the number of residues for which the sidechain conformation was analysed, and the total number of residues.

Mol	Chain	Analysed	Rotameric	Outliers	Percentiles	
1	A	313/308 (102%)	304 (97%)	9 (3%)	37	20
1	B	306/308 (99%)	299 (98%)	7 (2%)	45	29
1	C	304/308 (99%)	301 (99%)	3 (1%)	73	64
1	D	298/308 (97%)	295 (99%)	3 (1%)	73	64
All	All	1221/1232 (99%)	1199 (98%)	22 (2%)	54	39

All (22) residues with a non-rotameric sidechain are listed below:

Mol	Chain	Res	Type
1	A	37	TYR
1	A	56	SER
1	A	115	THR
1	A	167	ASN
1	A	262	GLU
1	A	263	ARG
1	A	300	LEU
1	A	307[A]	ILE
1	A	307[B]	ILE
1	B	11	LYS
1	B	31	LEU
1	B	37	TYR
1	B	65	ASP
1	B	107	SER
1	B	167	ASN
1	B	174	LYS
1	C	37	TYR
1	C	107	SER
1	C	167	ASN
1	D	37	TYR
1	D	167	ASN
1	D	260	LYS

Sometimes sidechains can be flipped to improve hydrogen bonding and reduce clashes. All (18) such sidechains are listed below:

Mol	Chain	Res	Type
1	A	167	ASN

Continued on next page...

Continued from previous page...

Mol	Chain	Res	Type
1	A	270	HIS
1	A	320	HIS
1	A	343	ASN
1	B	167	ASN
1	B	270	HIS
1	B	320	HIS
1	B	343	ASN
1	C	167	ASN
1	C	270	HIS
1	C	320	HIS
1	C	348	ASN
1	C	362	ASN
1	D	167	ASN
1	D	270	HIS
1	D	320	HIS
1	D	343	ASN
1	D	348	ASN

5.3.3 RNA [i](#)

There are no RNA molecules in this entry.

5.4 Non-standard residues in protein, DNA, RNA chains [i](#)

There are no non-standard protein/DNA/RNA residues in this entry.

5.5 Carbohydrates [i](#)

There are no oligosaccharides in this entry.

5.6 Ligand geometry [i](#)

Of 12 ligands modelled in this entry, 2 are monoatomic - leaving 10 for Mogul analysis.

In the following table, the Counts columns list the number of bonds (or angles) for which Mogul statistics could be retrieved, the number of bonds (or angles) that are observed in the model and the number of bonds (or angles) that are defined in the Chemical Component Dictionary. The Link column lists molecule types, if any, to which the group is linked. The Z score for a bond length (or angle) is the number of standard deviations the observed value is removed from the expected value. A bond length (or angle) with $|Z| > 2$ is considered an outlier worth inspection. RMSZ is the root-mean-square of all Z scores of the bond lengths (or angles).

Mol	Type	Chain	Res	Link	Bond lengths			Bond angles		
					Counts	RMSZ	# Z > 2	Counts	RMSZ	# Z > 2
2	PEG	B	401	-	6,6,6	0.54	0	5,5,5	0.43	0
2	PEG	D	401	-	6,6,6	0.26	0	5,5,5	0.78	0
4	ACT	B	403	-	3,3,3	0.86	0	3,3,3	0.65	0
2	PEG	A	401	-	6,6,6	0.49	0	5,5,5	0.83	0
2	PEG	B	402	-	6,6,6	0.31	0	5,5,5	0.65	0
2	PEG	A	402	-	6,6,6	0.32	0	5,5,5	0.84	0
3	IMD	A	403	-	3,5,5	0.25	0	4,5,5	0.67	0
2	PEG	C	402	-	6,6,6	0.23	0	5,5,5	0.89	0
2	PEG	C	403	-	6,6,6	0.33	0	5,5,5	0.66	0
2	PEG	C	401	-	6,6,6	0.52	0	5,5,5	1.16	1 (20%)

In the following table, the Chirals column lists the number of chiral outliers, the number of chiral centers analysed, the number of these observed in the model and the number defined in the Chemical Component Dictionary. Similar counts are reported in the Torsion and Rings columns. '-' means no outliers of that kind were identified.

Mol	Type	Chain	Res	Link	Chirals	Torsions	Rings
2	PEG	B	401	-	-	1/4/4/4	-
2	PEG	D	401	-	-	2/4/4/4	-
2	PEG	A	401	-	-	0/4/4/4	-
2	PEG	B	402	-	-	2/4/4/4	-
2	PEG	A	402	-	-	1/4/4/4	-
3	IMD	A	403	-	-	-	0/1/1/1
2	PEG	C	402	-	-	0/4/4/4	-
2	PEG	C	403	-	-	2/4/4/4	-
2	PEG	C	401	-	-	0/4/4/4	-

There are no bond length outliers.

All (1) bond angle outliers are listed below:

Mol	Chain	Res	Type	Atoms	Z	Observed(°)	Ideal(°)
2	C	401	PEG	C3-O2-C2	-2.05	104.42	113.29

There are no chirality outliers.

All (8) torsion outliers are listed below:

Mol	Chain	Res	Type	Atoms
2	D	401	PEG	O2-C3-C4-O4
2	B	401	PEG	O1-C1-C2-O2
2	C	403	PEG	O1-C1-C2-O2

Continued on next page...

Continued from previous page...

Mol	Chain	Res	Type	Atoms
2	A	402	PEG	O1-C1-C2-O2
2	C	403	PEG	C4-C3-O2-C2
2	B	402	PEG	C4-C3-O2-C2
2	D	401	PEG	C1-C2-O2-C3
2	B	402	PEG	C1-C2-O2-C3

There are no ring outliers.

5 monomers are involved in 19 short contacts:

Mol	Chain	Res	Type	Clashes	Symm-Clashes
2	D	401	PEG	2	0
2	B	402	PEG	3	0
3	A	403	IMD	8	0
2	C	403	PEG	5	0
2	C	401	PEG	1	0

5.7 Other polymers [i](#)

There are no such residues in this entry.

5.8 Polymer linkage issues [i](#)

There are no chain breaks in this entry.

6 Fit of model and data

6.1 Protein, DNA and RNA chains

In the following table, the column labelled ‘#RSRZ > 2’ contains the number (and percentage) of RSRZ outliers, followed by percent RSRZ outliers for the chain as percentile scores relative to all X-ray entries and entries of similar resolution. The OWAB column contains the minimum, median, 95th percentile and maximum values of the occupancy-weighted average B-factor per residue. The column labelled ‘Q < 0.9’ lists the number of (and percentage) of residues with an average occupancy less than 0.9.

Mol	Chain	Analysed	<RSRZ>	#RSRZ>2	OWAB(Å ²)	Q<0.9
1	A	357/373 (95%)	-0.32	19 (5%) 33 35	6, 16, 44, 76	17 (4%)
1	B	348/373 (93%)	-0.10	8 (2%) 61 64	8, 22, 41, 70	14 (4%)
1	C	341/373 (91%)	-0.39	4 (1%) 76 79	5, 17, 33, 55	15 (4%)
1	D	341/373 (91%)	-0.26	5 (1%) 71 74	9, 20, 39, 69	10 (2%)
All	All	1387/1492 (92%)	-0.27	36 (2%) 57 60	5, 19, 39, 76	56 (4%)

All (36) RSRZ outliers are listed below:

Mol	Chain	Res	Type	RSRZ
1	A	48	PHE	5.5
1	C	44	TYR	4.8
1	A	49	ASN	4.6
1	A	114	VAL	4.4
1	D	44	TYR	4.4
1	D	108	GLU	4.3
1	A	119	SER	3.7
1	C	51	THR	3.3
1	B	117	ILE	3.2
1	A	120	SER	3.2
1	A	47	GLU	3.2
1	B	44	TYR	3.1
1	A	65	ASP	3.0
1	D	107	SER	2.9
1	D	45	SER	2.8
1	A	44	TYR	2.8
1	B	122	LEU	2.8
1	B	123	PRO	2.6
1	A	46	GLY	2.6
1	C	129	ALA	2.5
1	B	66	TYR	2.5

Continued on next page...

Continued from previous page...

Mol	Chain	Res	Type	RSRZ
1	A	52	SER	2.4
1	A	53	GLY	2.4
1	A	128	ILE	2.4
1	A	262	GLU	2.3
1	B	128	ILE	2.2
1	A	261	VAL	2.2
1	B	118	ILE	2.2
1	A	50	GLN	2.2
1	A	238	GLU	2.2
1	A	115	THR	2.1
1	D	129	ALA	2.1
1	B	107	SER	2.1
1	A	118	ILE	2.0
1	A	348	ASN	2.0
1	C	107	SER	2.0

6.2 Non-standard residues in protein, DNA, RNA chains [i](#)

There are no non-standard protein/DNA/RNA residues in this entry.

6.3 Carbohydrates [i](#)

There are no monosaccharides in this entry.

6.4 Ligands [i](#)

In the following table, the Atoms column lists the number of modelled atoms in the group and the number defined in the chemical component dictionary. The B-factors column lists the minimum, median, 95th percentile and maximum values of B factors of atoms in the group. The column labelled 'Q< 0.9' lists the number of atoms with occupancy less than 0.9.

Mol	Type	Chain	Res	Atoms	RSCC	RSR	B-factors(Å ²)	Q<0.9
2	PEG	C	403	7/7	0.76	0.14	48,49,52,54	0
3	IMD	A	403	5/5	0.76	0.14	36,36,37,40	0
2	PEG	C	402	7/7	0.89	0.13	24,28,36,47	0
2	PEG	D	401	7/7	0.90	0.14	21,24,31,40	0
2	PEG	A	402	7/7	0.90	0.11	26,28,35,43	0
2	PEG	A	401	7/7	0.92	0.11	16,17,21,32	0
2	PEG	B	402	7/7	0.92	0.09	31,34,40,43	0
5	CA	D	402	1/1	0.92	0.09	39,39,39,39	0

Continued on next page...

Continued from previous page...

Mol	Type	Chain	Res	Atoms	RSCC	RSR	B-factors(\AA^2)	Q<0.9
2	PEG	B	401	7/7	0.93	0.11	21,23,28,36	0
2	PEG	C	401	7/7	0.96	0.08	16,18,25,30	0
4	ACT	B	403	4/4	0.98	0.05	18,18,18,19	0
5	CA	C	404	1/1	0.99	0.07	26,26,26,26	0

6.5 Other polymers [i](#)

There are no such residues in this entry.