



Full wwPDB X-ray Structure Validation Report ⓘ

Sep 17, 2023 – 03:19 AM EDT

PDB ID : 4WO5
Title : Crystal structure of a BRAF kinase domain monomer
Authors : Critton, D.A.
Deposited on : 2014-10-15
Resolution : 2.83 Å(reported)

This is a Full wwPDB X-ray Structure Validation Report for a publicly released PDB entry.

We welcome your comments at validation@mail.wwpdb.org

A user guide is available at

<https://www.wwpdb.org/validation/2017/XrayValidationReportHelp>

with specific help available everywhere you see the ⓘ symbol.

The types of validation reports are described at

<http://www.wwpdb.org/validation/2017/FAQs#types>.

The following versions of software and data (see [references ⓘ](#)) were used in the production of this report:

MolProbity : 4.02b-467
Mogul : 1.8.5 (274361), CSD as541be (2020)
Xtriage (Phenix) : 1.13
EDS : 2.35.1
buster-report : 1.1.7 (2018)
Percentile statistics : 20191225.v01 (using entries in the PDB archive December 25th 2019)
Refmac : 5.8.0158
CCP4 : 7.0.044 (Gargrove)
Ideal geometry (proteins) : Engh & Huber (2001)
Ideal geometry (DNA, RNA) : Parkinson et al. (1996)
Validation Pipeline (wwPDB-VP) : 2.35.1

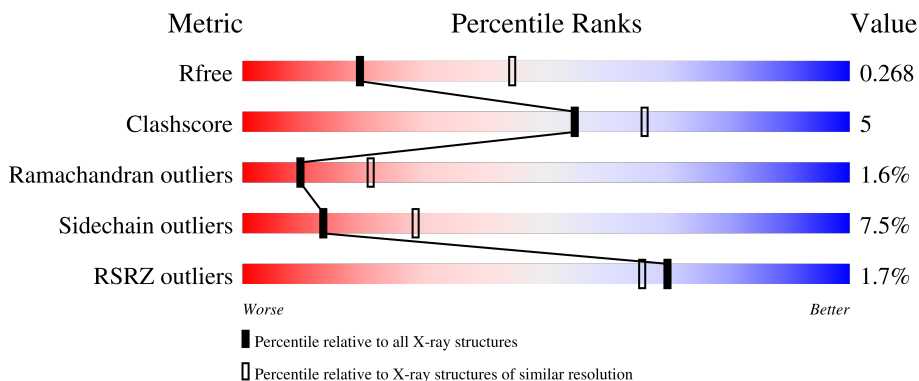
1 Overall quality at a glance

The following experimental techniques were used to determine the structure:

X-RAY DIFFRACTION

The reported resolution of this entry is 2.83 Å.

Percentile scores (ranging between 0-100) for global validation metrics of the entry are shown in the following graphic. The table shows the number of entries on which the scores are based.



Metric	Whole archive (#Entries)	Similar resolution (#Entries, resolution range(Å))
R_{free}	130704	1031 (2.86-2.82)
Clashscore	141614	1078 (2.86-2.82)
Ramachandran outliers	138981	1050 (2.86-2.82)
Sidechain outliers	138945	1051 (2.86-2.82)
RSRZ outliers	127900	1019 (2.86-2.82)

The table below summarises the geometric issues observed across the polymeric chains and their fit to the electron density. The red, orange, yellow and green segments of the lower bar indicate the fraction of residues that contain outliers for ≥ 3 , 2, 1 and 0 types of geometric quality criteria respectively. A grey segment represents the fraction of residues that are not modelled. The numeric value for each fraction is indicated below the corresponding segment, with a dot representing fractions $\leq 5\%$. The upper red bar (where present) indicates the fraction of residues that have poor fit to the electron density. The numeric value is given above the bar.

Mol	Chain	Length	Quality of chain
1	A	300	 2% 72% 15% • 11%
1	B	300	 % 70% 15% • 14%

2 Entry composition [i](#)

There are 3 unique types of molecules in this entry. The entry contains 4109 atoms, of which 0 are hydrogens and 0 are deuteriums.

In the tables below, the ZeroOcc column contains the number of atoms modelled with zero occupancy, the AltConf column contains the number of residues with at least one atom in alternate conformation and the Trace column contains the number of residues modelled with at most 2 atoms.

- Molecule 1 is a protein called Serine/threonine-protein kinase B-raf.

Mol	Chain	Residues	Atoms					ZeroOcc	AltConf	Trace
			Total	C	N	O	S			
1	A	266	Total	C	N	O	S	0	0	0
			2042	1306	348	375	13			
1	B	257	Total	C	N	O	S	0	0	0
			1936	1237	331	355	13			

There are 72 discrepancies between the modelled and reference sequences:

Chain	Residue	Modelled	Actual	Comment	Reference
A	424	MET	-	initiating methionine	UNP P15056
A	425	GLY	-	expression tag	UNP P15056
A	426	SER	-	expression tag	UNP P15056
A	427	SER	-	expression tag	UNP P15056
A	428	HIS	-	expression tag	UNP P15056
A	429	HIS	-	expression tag	UNP P15056
A	430	HIS	-	expression tag	UNP P15056
A	431	HIS	-	expression tag	UNP P15056
A	432	HIS	-	expression tag	UNP P15056
A	433	HIS	-	expression tag	UNP P15056
A	434	SER	-	expression tag	UNP P15056
A	435	SER	-	expression tag	UNP P15056
A	436	GLY	-	expression tag	UNP P15056
A	437	GLU	-	expression tag	UNP P15056
A	438	THR	-	expression tag	UNP P15056
A	439	VAL	-	expression tag	UNP P15056
A	440	ARG	-	expression tag	UNP P15056
A	441	PHE	-	expression tag	UNP P15056
A	442	GLN	-	expression tag	UNP P15056
A	443	GLY	-	expression tag	UNP P15056
A	543	ALA	ILE	engineered mutation	UNP P15056
A	544	SER	ILE	engineered mutation	UNP P15056
A	551	LYS	ILE	engineered mutation	UNP P15056
A	562	ARG	GLN	engineered mutation	UNP P15056
A	588	ASN	LEU	engineered mutation	UNP P15056

Continued on next page...

Continued from previous page...

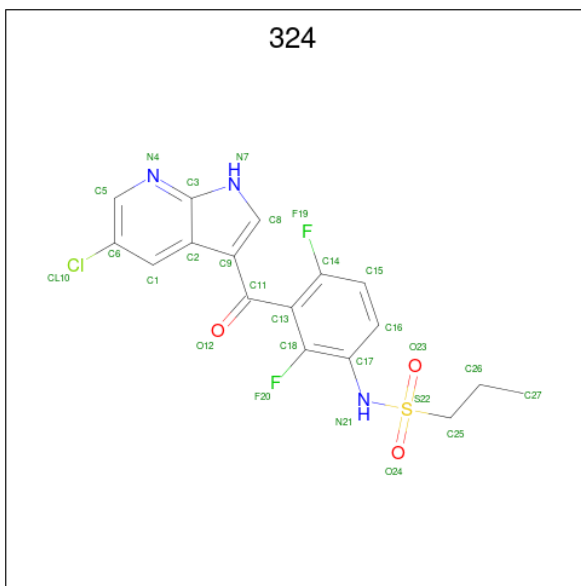
Chain	Residue	Modelled	Actual	Comment	Reference
A	630	SER	LYS	engineered mutation	UNP P15056
A	667	GLU	PHE	engineered mutation	UNP P15056
A	673	SER	TYR	engineered mutation	UNP P15056
A	688	ARG	ALA	engineered mutation	UNP P15056
A	706	SER	LEU	engineered mutation	UNP P15056
A	709	ARG	GLN	engineered mutation	UNP P15056
A	713	GLU	SER	engineered mutation	UNP P15056
A	716	GLU	LEU	engineered mutation	UNP P15056
A	720	GLU	SER	engineered mutation	UNP P15056
A	722	SER	PRO	engineered mutation	UNP P15056
A	723	GLY	LYS	engineered mutation	UNP P15056
B	424	MET	-	initiating methionine	UNP P15056
B	425	GLY	-	expression tag	UNP P15056
B	426	SER	-	expression tag	UNP P15056
B	427	SER	-	expression tag	UNP P15056
B	428	HIS	-	expression tag	UNP P15056
B	429	HIS	-	expression tag	UNP P15056
B	430	HIS	-	expression tag	UNP P15056
B	431	HIS	-	expression tag	UNP P15056
B	432	HIS	-	expression tag	UNP P15056
B	433	HIS	-	expression tag	UNP P15056
B	434	SER	-	expression tag	UNP P15056
B	435	SER	-	expression tag	UNP P15056
B	436	GLY	-	expression tag	UNP P15056
B	437	GLU	-	expression tag	UNP P15056
B	438	THR	-	expression tag	UNP P15056
B	439	VAL	-	expression tag	UNP P15056
B	440	ARG	-	expression tag	UNP P15056
B	441	PHE	-	expression tag	UNP P15056
B	442	GLN	-	expression tag	UNP P15056
B	443	GLY	-	expression tag	UNP P15056
B	543	ALA	ILE	engineered mutation	UNP P15056
B	544	SER	ILE	engineered mutation	UNP P15056
B	551	LYS	ILE	engineered mutation	UNP P15056
B	562	ARG	GLN	engineered mutation	UNP P15056
B	588	ASN	LEU	engineered mutation	UNP P15056
B	630	SER	LYS	engineered mutation	UNP P15056
B	667	GLU	PHE	engineered mutation	UNP P15056
B	673	SER	TYR	engineered mutation	UNP P15056
B	688	ARG	ALA	engineered mutation	UNP P15056
B	706	SER	LEU	engineered mutation	UNP P15056
B	709	ARG	GLN	engineered mutation	UNP P15056

Continued on next page...

Continued from previous page...

Chain	Residue	Modelled	Actual	Comment	Reference
B	713	GLU	SER	engineered mutation	UNP P15056
B	716	GLU	LEU	engineered mutation	UNP P15056
B	720	GLU	SER	engineered mutation	UNP P15056
B	722	SER	PRO	engineered mutation	UNP P15056
B	723	GLY	LYS	engineered mutation	UNP P15056

- Molecule 2 is N-{3-[(5-chloro-1H-pyrrolo[2,3-b]pyridin-3-yl)carbonyl]-2,4-difluorophenyl}propane-1-sulfonamide (three-letter code: 324) (formula: C₁₇H₁₄ClF₂N₃O₃S).



Mol	Chain	Residues	Atoms						ZeroOcc	AltConf	
			Total	C	Cl	F	N	O			S
2	A	1	Total	C	Cl	F	N	O	S	0	0
			27	17	1	2	3	3	1		
2	B	1	Total	C	Cl	F	N	O	S	0	0
			27	17	1	2	3	3	1		


- Molecule 3 is water.

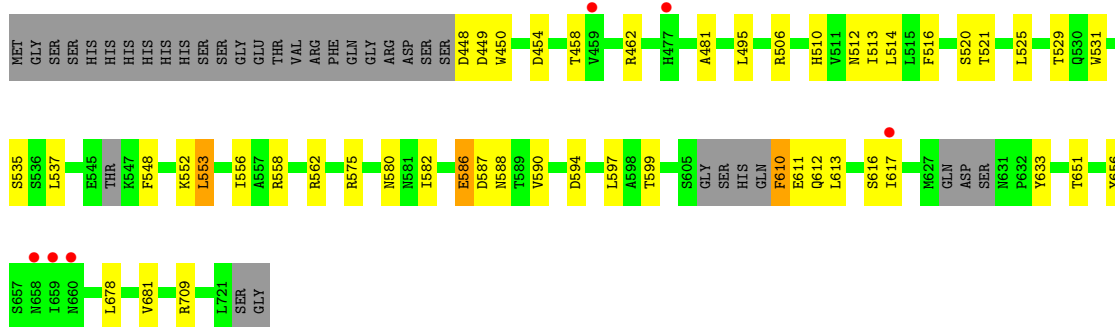
Mol	Chain	Residues	Atoms		ZeroOcc	AltConf
3	A	35	Total	O	0	0
			35	35		
3	B	42	Total	O	0	0
			42	42		

3 Residue-property plots [i](#)

These plots are drawn for all protein, RNA, DNA and oligosaccharide chains in the entry. The first graphic for a chain summarises the proportions of the various outlier classes displayed in the second graphic. The second graphic shows the sequence view annotated by issues in geometry and electron density. Residues are color-coded according to the number of geometric quality criteria for which they contain at least one outlier: green = 0, yellow = 1, orange = 2 and red = 3 or more. A red dot above a residue indicates a poor fit to the electron density ($RSRZ > 2$). Stretches of 2 or more consecutive residues without any outlier are shown as a green connector. Residues present in the sample, but not in the model, are shown in grey.

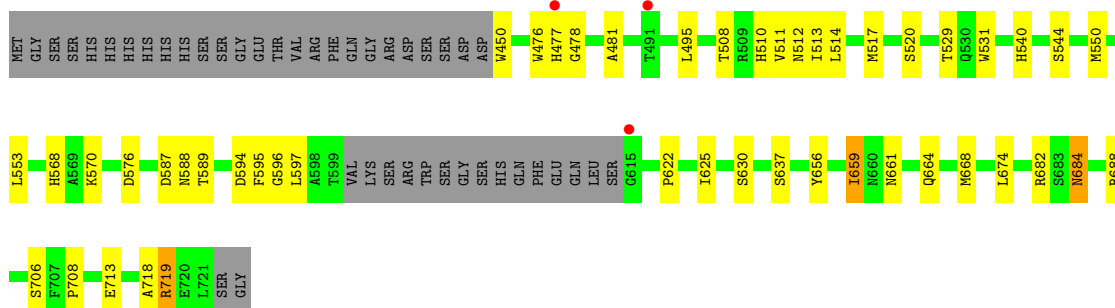
- Molecule 1: Serine/threonine-protein kinase B-raf

Chain A: 



- Molecule 1: Serine/threonine-protein kinase B-raf

Chain B: 



4 Data and refinement statistics

Property	Value	Source
Space group	I 2 2 2	Depositor
Cell constants a, b, c, α , β , γ	65.61Å 72.75Å 243.34Å 90.00° 90.00° 90.00°	Depositor
Resolution (Å)	38.03 – 2.83 38.03 – 2.83	Depositor EDS
% Data completeness (in resolution range)	99.8 (38.03-2.83) 100.0 (38.03-2.83)	Depositor EDS
R_{merge}	(Not available)	Depositor
R_{sym}	0.07	Depositor
$\langle I/\sigma(I) \rangle$ ¹	3.23 (at 2.85Å)	Xtrriage
Refinement program	BUSTER 2.11.5	Depositor
R, R_{free}	0.193 , 0.260 0.201 , 0.268	Depositor DCC
R_{free} test set	720 reflections (5.02%)	wwPDB-VP
Wilson B-factor (Å ²)	57.7	Xtrriage
Anisotropy	0.285	Xtrriage
Bulk solvent k_{sol} (e/Å ³), B_{sol} (Å ²)	0.33 , 67.7	EDS
L-test for twinning ²	$\langle L \rangle = 0.49$, $\langle L^2 \rangle = 0.32$	Xtrriage
Estimated twinning fraction	No twinning to report.	Xtrriage
F_o, F_c correlation	0.93	EDS
Total number of atoms	4109	wwPDB-VP
Average B, all atoms (Å ²)	57.0	wwPDB-VP

Xtrriage's analysis on translational NCS is as follows: *The largest off-origin peak in the Patterson function is 5.13% of the height of the origin peak. No significant pseudotranslation is detected.*

¹Intensities estimated from amplitudes.

²Theoretical values of $\langle |L| \rangle$, $\langle L^2 \rangle$ for acentric reflections are 0.5, 0.333 respectively for untwinned datasets, and 0.375, 0.2 for perfectly twinned datasets.

5 Model quality [i](#)

5.1 Standard geometry [i](#)

Bond lengths and bond angles in the following residue types are not validated in this section:
324

The Z score for a bond length (or angle) is the number of standard deviations the observed value is removed from the expected value. A bond length (or angle) with $|Z| > 5$ is considered an outlier worth inspection. RMSZ is the root-mean-square of all Z scores of the bond lengths (or angles).

Mol	Chain	Bond lengths		Bond angles	
		RMSZ	# Z >5	RMSZ	# Z >5
1	A	0.46	0/2085	0.72	1/2824 (0.0%)
1	B	0.49	0/1978	0.72	1/2689 (0.0%)
All	All	0.47	0/4063	0.72	2/5513 (0.0%)

There are no bond length outliers.

All (2) bond angle outliers are listed below:

Mol	Chain	Res	Type	Atoms	Z	Observed(°)	Ideal(°)
1	A	586	GLU	C-N-CA	9.16	144.60	121.70
1	B	718	ALA	C-N-CA	5.28	134.90	121.70

There are no chirality outliers.

There are no planarity outliers.

5.2 Too-close contacts [i](#)

In the following table, the Non-H and H(model) columns list the number of non-hydrogen atoms and hydrogen atoms in the chain respectively. The H(added) column lists the number of hydrogen atoms added and optimized by MolProbity. The Clashes column lists the number of clashes within the asymmetric unit, whereas Symm-Clashes lists symmetry-related clashes.

Mol	Chain	Non-H	H(model)	H(added)	Clashes	Symm-Clashes
1	A	2042	0	1953	20	0
1	B	1936	0	1836	22	0
2	A	27	0	14	3	0
2	B	27	0	14	1	0
3	A	35	0	0	0	0
3	B	42	0	0	0	0
All	All	4109	0	3817	41	0

The all-atom clashscore is defined as the number of clashes found per 1000 atoms (including hydrogen atoms). The all-atom clashscore for this structure is 5.

All (41) close contacts within the same asymmetric unit are listed below, sorted by their clash magnitude.

Atom-1	Atom-2	Interatomic distance (Å)	Clash overlap (Å)
1:A:586:GLU:HA	1:A:588:ASN:H	1.06	1.07
1:B:477:HIS:HB2	1:B:478:GLY:HA3	1.39	1.05
1:A:586:GLU:HA	1:A:588:ASN:N	1.91	0.86
1:B:510:HIS:HD2	1:B:512:ASN:H	1.40	0.70
1:B:688:ARG:HH21	1:B:719:ARG:HD2	1.59	0.67
1:B:587:ASP:H	1:B:588:ASN:HA	1.59	0.67
1:B:510:HIS:CD2	1:B:512:ASN:H	2.13	0.66
1:B:659:ILE:HD11	1:B:664:GLN:HB3	1.81	0.63
1:A:548:PHE:HB2	1:A:553:LEU:HD13	1.82	0.62
1:A:594:ASP:H	2:A:801:324:HN21	1.50	0.58
1:B:477:HIS:HB2	1:B:478:GLY:CA	2.25	0.57
1:A:510:HIS:HB3	1:A:513:ILE:HG12	1.87	0.56
1:A:510:HIS:CD2	1:A:512:ASN:H	2.23	0.55
1:A:558:ARG:O	1:A:562:ARG:HG3	2.06	0.55
1:A:548:PHE:HD2	1:A:552:LYS:HD3	1.74	0.53
1:A:481:ALA:HB2	1:A:531:TRP:HE3	1.75	0.50
1:A:529:THR:OG1	2:A:801:324:H8	2.11	0.50
1:B:508:THR:HG22	1:B:570:LYS:HG2	1.92	0.50
1:A:651:THR:HG22	1:A:681:VAL:HA	1.93	0.49
1:B:481:ALA:HB2	1:B:531:TRP:HE3	1.79	0.47
1:B:587:ASP:N	1:B:588:ASN:HA	2.27	0.46
1:A:558:ARG:NH2	1:B:568:HIS:O	2.47	0.46
1:A:582:ILE:HG23	1:A:590:VAL:HG13	1.99	0.45
1:B:511:VAL:HG22	1:B:589:THR:HG21	1.99	0.45
1:B:476:TRP:HZ3	1:B:517:MET:HB3	1.82	0.45
1:A:611:GLU:C	1:A:613:LEU:H	2.21	0.44
1:B:706:SER:HB2	1:B:708:PRO:HD2	2.00	0.44
1:B:513:ILE:HG23	1:B:595:PHE:HZ	1.82	0.44
1:B:622:PRO:HA	1:B:625:ILE:HG22	1.98	0.44
1:B:668:MET:HB3	1:B:674:LEU:HB2	1.99	0.44
1:B:540:HIS:HA	1:B:544:SER:HB3	2.00	0.43
1:B:529:THR:OG1	2:B:801:324:H8	2.19	0.43
1:B:550:MET:HB2	1:B:684:ASN:HD22	1.84	0.43
1:A:537:LEU:HD13	1:A:556:ILE:HG21	2.02	0.42
1:A:516:PHE:HB2	2:A:801:324:H27	2.02	0.42
1:A:448:ASP:C	1:A:450:TRP:H	2.23	0.42
1:B:513:ILE:HG23	1:B:595:PHE:CZ	2.55	0.42

Continued on next page...

Continued from previous page...

Atom-1	Atom-2	Interatomic distance (Å)	Clash overlap (Å)
1:A:610:PHE:N	1:A:633:TYR:HH	2.18	0.41
1:A:521:THR:HA	1:A:525:LEU:HD23	2.02	0.41
1:A:678:LEU:O	1:A:681:VAL:HG22	2.21	0.41
1:B:661:ASN:HB3	1:B:664:GLN:HB2	2.02	0.41

There are no symmetry-related clashes.

5.3 Torsion angles [i](#)

5.3.1 Protein backbone [i](#)

In the following table, the Percentiles column shows the percent Ramachandran outliers of the chain as a percentile score with respect to all X-ray entries followed by that with respect to entries of similar resolution.

The Analysed column shows the number of residues for which the backbone conformation was analysed, and the total number of residues.

Mol	Chain	Analysed	Favoured	Allowed	Outliers	Percentiles	
1	A	258/300 (86%)	242 (94%)	12 (5%)	4 (2%)	9	21
1	B	253/300 (84%)	230 (91%)	19 (8%)	4 (2%)	9	21
All	All	511/600 (85%)	472 (92%)	31 (6%)	8 (2%)	9	21

All (8) Ramachandran outliers are listed below:

Mol	Chain	Res	Type
1	A	587	ASP
1	A	617	ILE
1	B	594	ASP
1	B	630	SER
1	A	612	GLN
1	B	719	ARG
1	A	616	SER
1	B	596	GLY

5.3.2 Protein sidechains [i](#)

In the following table, the Percentiles column shows the percent sidechain outliers of the chain as a percentile score with respect to all X-ray entries followed by that with respect to entries of similar resolution.

The Analysed column shows the number of residues for which the sidechain conformation was analysed, and the total number of residues.

Mol	Chain	Analysed	Rotameric	Outliers	Percentiles	
1	A	208/263 (79%)	191 (92%)	17 (8%)	11	24
1	B	194/263 (74%)	181 (93%)	13 (7%)	16	32
All	All	402/526 (76%)	372 (92%)	30 (8%)	13	28

All (30) residues with a non-rotameric sidechain are listed below:

Mol	Chain	Res	Type
1	A	449	ASP
1	A	454	ASP
1	A	458	THR
1	A	462	ARG
1	A	495	LEU
1	A	506	ARG
1	A	514	LEU
1	A	520	SER
1	A	535	SER
1	A	553	LEU
1	A	575	ARG
1	A	580	ASN
1	A	597	LEU
1	A	599	THR
1	A	610	PHE
1	A	656	TYR
1	A	709	ARG
1	B	450	TRP
1	B	495	LEU
1	B	514	LEU
1	B	520	SER
1	B	553	LEU
1	B	576	ASP
1	B	597	LEU
1	B	637	SER
1	B	656	TYR
1	B	659	ILE
1	B	682	ARG
1	B	684	ASN
1	B	713	GLU

Sometimes sidechains can be flipped to improve hydrogen bonding and reduce clashes. All (4) such sidechains are listed below:

Mol	Chain	Res	Type
1	A	510	HIS
1	A	540	HIS
1	A	664	GLN
1	B	510	HIS

5.3.3 RNA [i](#)

There are no RNA molecules in this entry.

5.4 Non-standard residues in protein, DNA, RNA chains [i](#)

There are no non-standard protein/DNA/RNA residues in this entry.

5.5 Carbohydrates [i](#)

There are no monosaccharides in this entry.

5.6 Ligand geometry [i](#)

2 ligands are modelled in this entry.

In the following table, the Counts columns list the number of bonds (or angles) for which Mogul statistics could be retrieved, the number of bonds (or angles) that are observed in the model and the number of bonds (or angles) that are defined in the Chemical Component Dictionary. The Link column lists molecule types, if any, to which the group is linked. The Z score for a bond length (or angle) is the number of standard deviations the observed value is removed from the expected value. A bond length (or angle) with $|Z| > 2$ is considered an outlier worth inspection. RMSZ is the root-mean-square of all Z scores of the bond lengths (or angles).

Mol	Type	Chain	Res	Link	Bond lengths			Bond angles		
					Counts	RMSZ	# Z > 2	Counts	RMSZ	# Z > 2
2	324	A	801	-	28,29,29	0.98	2 (7%)	31,43,43	2.79	5 (16%)
2	324	B	801	-	28,29,29	1.13	3 (10%)	31,43,43	2.85	7 (22%)

In the following table, the Chirals column lists the number of chiral outliers, the number of chiral centers analysed, the number of these observed in the model and the number defined in the Chemical Component Dictionary. Similar counts are reported in the Torsion and Rings columns. '-' means no outliers of that kind were identified.

Mol	Type	Chain	Res	Link	Chirals	Torsions	Rings
2	324	A	801	-	-	3/13/17/17	0/3/3/3

Continued on next page...

Continued from previous page...

Mol	Type	Chain	Res	Link	Chirals	Torsions	Rings
2	324	B	801	-	-	0/13/17/17	0/3/3/3

All (5) bond length outliers are listed below:

Mol	Chain	Res	Type	Atoms	Z	Observed(Å)	Ideal(Å)
2	B	801	324	C1-C6	3.06	1.42	1.36
2	B	801	324	C9-C2	2.63	1.44	1.42
2	A	801	324	C1-C6	2.61	1.41	1.36
2	A	801	324	C8-N7	-2.15	1.32	1.36
2	B	801	324	C8-N7	-2.08	1.32	1.36

All (12) bond angle outliers are listed below:

Mol	Chain	Res	Type	Atoms	Z	Observed(°)	Ideal(°)
2	B	801	324	O23-S22-O24	-12.49	101.26	119.35
2	A	801	324	O23-S22-O24	-11.59	102.56	119.35
2	B	801	324	C5-N4-C3	5.68	122.39	116.69
2	A	801	324	C5-N4-C3	5.66	122.38	116.69
2	A	801	324	C14-C13-C18	5.55	120.05	115.84
2	B	801	324	C14-C13-C18	4.22	119.03	115.84
2	B	801	324	O23-S22-C25	3.66	113.70	107.86
2	A	801	324	O23-S22-C25	3.60	113.60	107.86
2	A	801	324	C25-S22-N21	3.13	111.23	106.77
2	B	801	324	C18-C13-C11	-2.19	118.41	121.48
2	B	801	324	O24-S22-C25	2.09	111.19	107.86
2	B	801	324	F19-C14-C13	2.08	121.25	118.01

There are no chirality outliers.

All (3) torsion outliers are listed below:

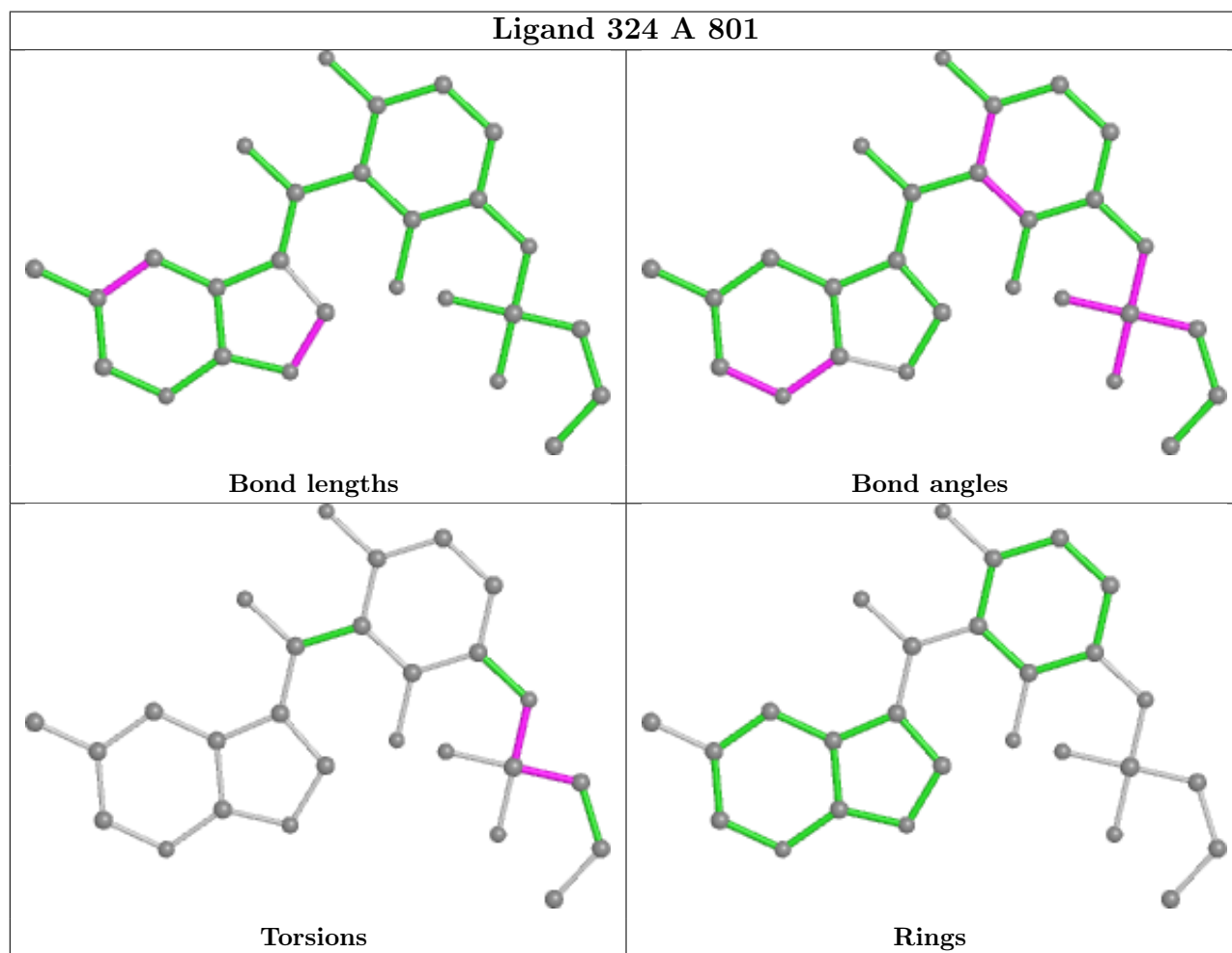
Mol	Chain	Res	Type	Atoms
2	A	801	324	C26-C25-S22-N21
2	A	801	324	C17-N21-S22-O23
2	A	801	324	C26-C25-S22-O23

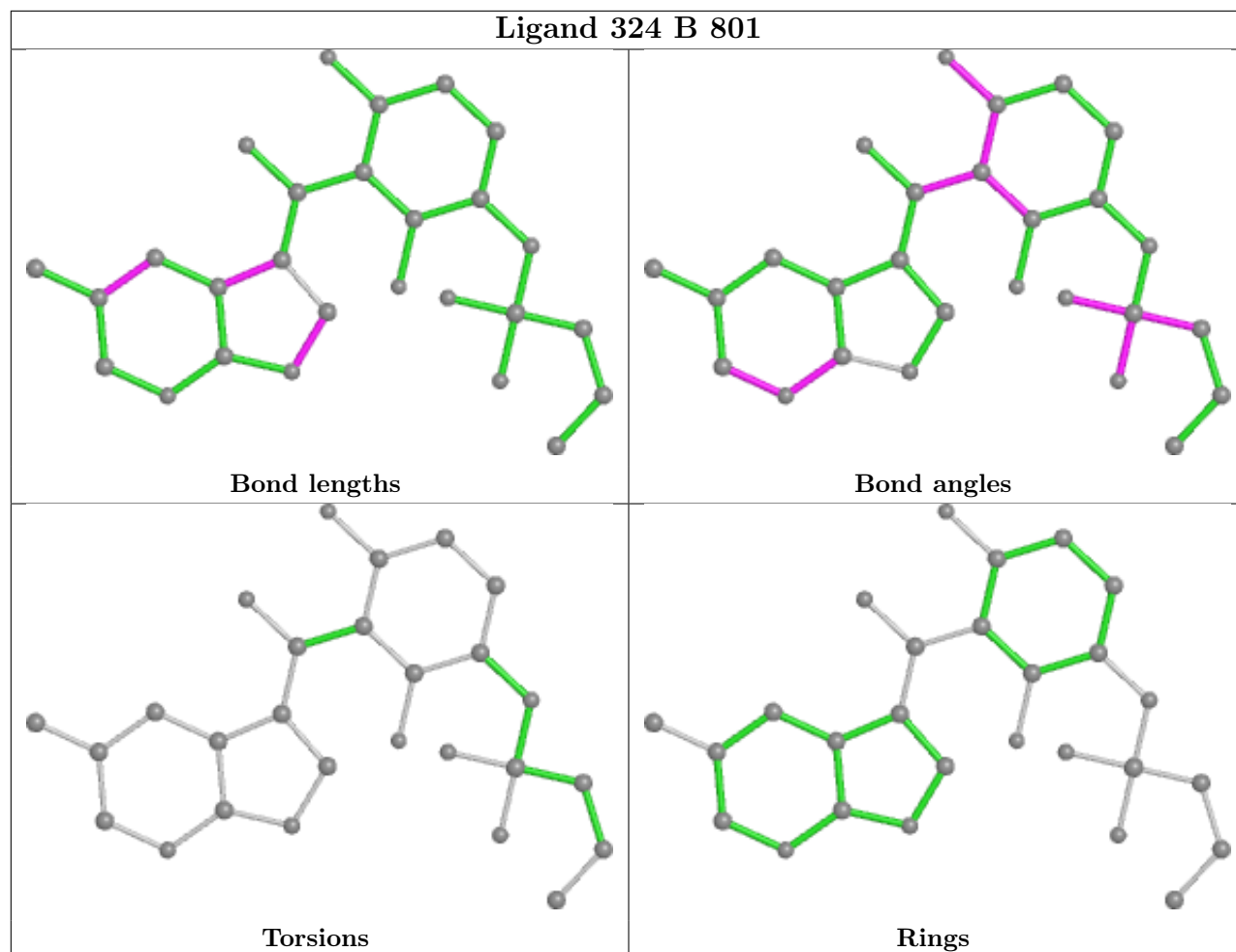
There are no ring outliers.

2 monomers are involved in 4 short contacts:

Mol	Chain	Res	Type	Clashes	Symm-Clashes
2	A	801	324	3	0
2	B	801	324	1	0

The following is a two-dimensional graphical depiction of Mogul quality analysis of bond lengths, bond angles, torsion angles, and ring geometry for all instances of the Ligand of Interest. In addition, ligands with molecular weight > 250 and outliers as shown on the validation Tables will also be included. For torsion angles, if less than 5% of the Mogul distribution of torsion angles is within 10 degrees of the torsion angle in question, then that torsion angle is considered an outlier. Any bond that is central to one or more torsion angles identified as an outlier by Mogul will be highlighted in the graph. For rings, the root-mean-square deviation (RMSD) between the ring in question and similar rings identified by Mogul is calculated over all ring torsion angles. If the average RMSD is greater than 60 degrees and the minimal RMSD between the ring in question and any Mogul-identified rings is also greater than 60 degrees, then that ring is considered an outlier. The outliers are highlighted in purple. The color gray indicates Mogul did not find sufficient equivalents in the CSD to analyse the geometry.





5.7 Other polymers [i](#)

There are no such residues in this entry.

5.8 Polymer linkage issues [i](#)

There are no chain breaks in this entry.

6 Fit of model and data [i](#)

6.1 Protein, DNA and RNA chains [i](#)

In the following table, the column labelled ‘#RSRZ > 2’ contains the number (and percentage) of RSRZ outliers, followed by percent RSRZ outliers for the chain as percentile scores relative to all X-ray entries and entries of similar resolution. The OWAB column contains the minimum, median, 95th percentile and maximum values of the occupancy-weighted average B-factor per residue. The column labelled ‘Q < 0.9’ lists the number of (and percentage) of residues with an average occupancy less than 0.9.

Mol	Chain	Analysed	<RSRZ>	#RSRZ>2	OWAB(Å ²)	Q<0.9
1	A	266/300 (88%)	-0.10	6 (2%) 60 55	29, 51, 81, 112	0
1	B	257/300 (85%)	-0.18	3 (1%) 79 76	34, 59, 84, 109	0
All	All	523/600 (87%)	-0.14	9 (1%) 70 66	29, 55, 84, 112	0

All (9) RSRZ outliers are listed below:

Mol	Chain	Res	Type	RSRZ
1	B	477	HIS	3.6
1	A	659	ILE	3.2
1	A	660	ASN	2.8
1	A	658	ASN	2.7
1	A	477	HIS	2.5
1	B	491	THR	2.4
1	A	459	VAL	2.3
1	B	615	GLY	2.3
1	A	617	ILE	2.1

6.2 Non-standard residues in protein, DNA, RNA chains [i](#)

There are no non-standard protein/DNA/RNA residues in this entry.

6.3 Carbohydrates [i](#)

There are no monosaccharides in this entry.

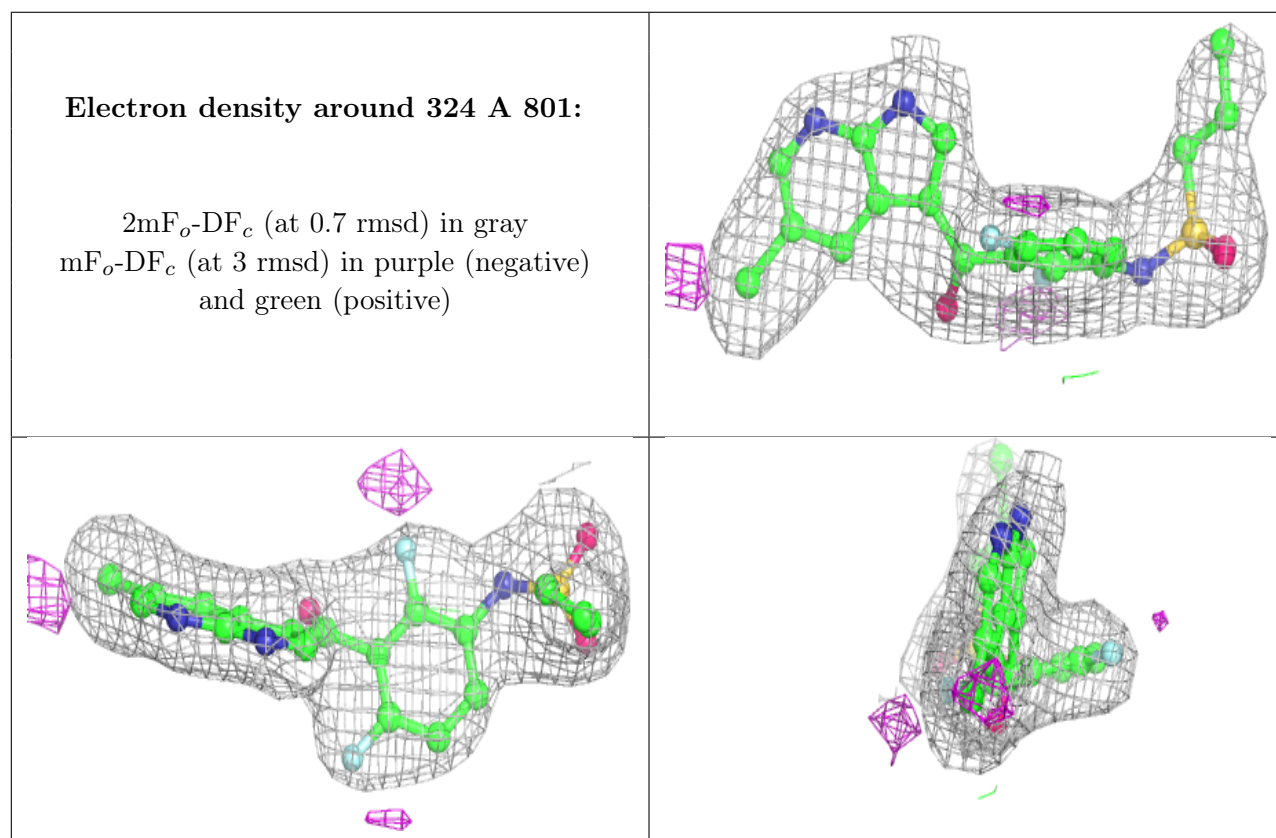
6.4 Ligands [i](#)

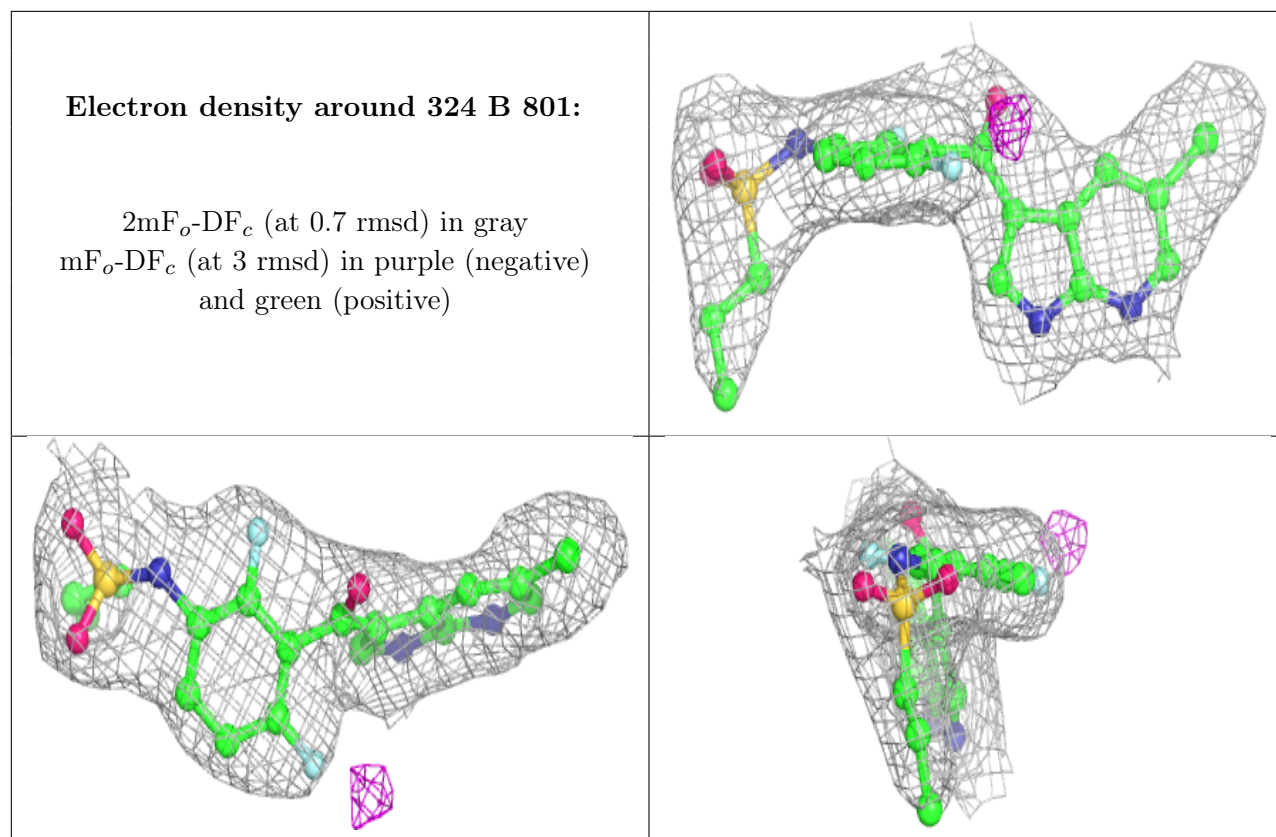
In the following table, the Atoms column lists the number of modelled atoms in the group and the number defined in the chemical component dictionary. The B-factors column lists the minimum,

median, 95th percentile and maximum values of B factors of atoms in the group. The column labelled 'Q < 0.9' lists the number of atoms with occupancy less than 0.9.

Mol	Type	Chain	Res	Atoms	RSCC	RSR	B-factors(Å ²)	Q<0.9
2	324	A	801	27/27	0.98	0.15	35,40,44,45	0
2	324	B	801	27/27	0.98	0.14	35,41,47,49	0

The following is a graphical depiction of the model fit to experimental electron density of all instances of the Ligand of Interest. In addition, ligands with molecular weight > 250 and outliers as shown on the geometry validation Tables will also be included. Each fit is shown from different orientation to approximate a three-dimensional view.





6.5 Other polymers [i](#)

There are no such residues in this entry.