



# Full wwPDB X-ray Structure Validation Report ⓘ

Jan 2, 2024 – 01:11 pm GMT

PDB ID : 4UV7  
Title : The complex structure of extracellular domain of EGFR and GC1118A  
Authors : Yoo, J.H.; Cho, H.S.  
Deposited on : 2014-08-05  
Resolution : 2.10 Å(reported)

This is a Full wwPDB X-ray Structure Validation Report for a publicly released PDB entry.

We welcome your comments at [validation@mail.wwpdb.org](mailto:validation@mail.wwpdb.org)

A user guide is available at

<https://www.wwpdb.org/validation/2017/XrayValidationReportHelp>

with specific help available everywhere you see the ⓘ symbol.

The types of validation reports are described at

<http://www.wwpdb.org/validation/2017/FAQs#types>.

---

The following versions of software and data (see [references ⓘ](#)) were used in the production of this report:

MolProbity : 4.02b-467  
Mogul : 1.8.4, CSD as541be (2020)  
Xtriage (Phenix) : 1.13  
EDS : 2.36  
Percentile statistics : 20191225.v01 (using entries in the PDB archive December 25th 2019)  
Refmac : 5.8.0158  
CCP4 : 7.0.044 (Gargrove)  
Ideal geometry (proteins) : Engh & Huber (2001)  
Ideal geometry (DNA, RNA) : Parkinson et al. (1996)  
Validation Pipeline (wwPDB-VP) : 2.36

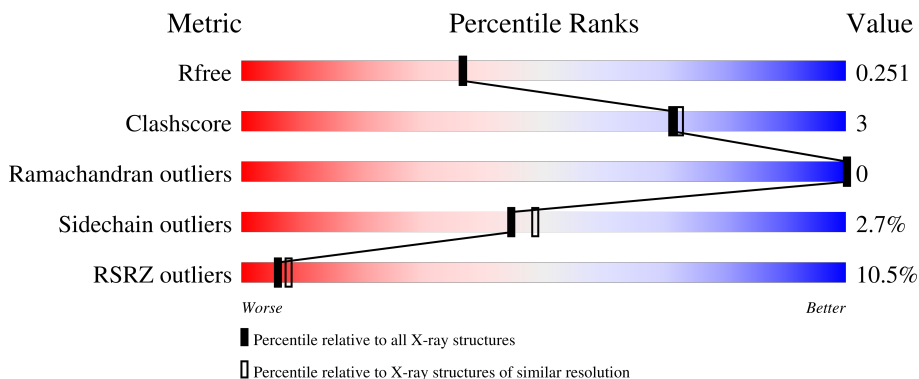
# 1 Overall quality at a glance

The following experimental techniques were used to determine the structure:

*X-RAY DIFFRACTION*

The reported resolution of this entry is 2.10 Å.

Percentile scores (ranging between 0-100) for global validation metrics of the entry are shown in the following graphic. The table shows the number of entries on which the scores are based.




Metric	Whole archive (#Entries)	Similar resolution (#Entries, resolution range(Å))
$R_{free}$	130704	5197 (2.10-2.10)
Clashscore	141614	5710 (2.10-2.10)
Ramachandran outliers	138981	5647 (2.10-2.10)
Sidechain outliers	138945	5648 (2.10-2.10)
RSRZ outliers	127900	5083 (2.10-2.10)

The table below summarises the geometric issues observed across the polymeric chains and their fit to the electron density. The red, orange, yellow and green segments of the lower bar indicate the fraction of residues that contain outliers for  $\geq 3$ , 2, 1 and 0 types of geometric quality criteria respectively. A grey segment represents the fraction of residues that are not modelled. The numeric value for each fraction is indicated below the corresponding segment, with a dot representing fractions  $\leq 5\%$ . The upper red bar (where present) indicates the fraction of residues that have poor fit to the electron density. The numeric value is given above the bar.

Mol	Chain	Length	Quality of chain
1	A	621	
2	H	225	
3	L	219	
4	B	3	
5	C	2	

*Continued on next page...*

*Continued from previous page...*

Mol	Chain	Length	Quality of chain
5	D	2	 100%

The following table lists non-polymeric compounds, carbohydrate monomers and non-standard residues in protein, DNA, RNA chains that are outliers for geometric or electron-density-fit criteria:

Mol	Type	Chain	Res	Chirality	Geometry	Clashes	Electron density
5	NAG	C	2	-	-	-	X

## 2 Entry composition [i](#)

There are 7 unique types of molecules in this entry. The entry contains 8385 atoms, of which 0 are hydrogens and 0 are deuteriums.

In the tables below, the ZeroOcc column contains the number of atoms modelled with zero occupancy, the AltConf column contains the number of residues with at least one atom in alternate conformation and the Trace column contains the number of residues modelled with at most 2 atoms.

- Molecule 1 is a protein called EPIDERMAL GROWTH FACTOR RECEPTOR.

Mol	Chain	Residues	Atoms					ZeroOcc	AltConf	Trace
			Total	C	N	O	S			
1	A	596	4583	2829	818	879	57	0	0	0

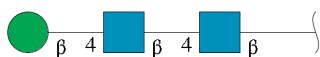
- Molecule 2 is a protein called GC1118A.

Mol	Chain	Residues	Atoms					ZeroOcc	AltConf	Trace
			Total	C	N	O	S			
2	H	218	1640	1034	279	321	6	0	0	0

- Molecule 3 is a protein called GC1118A.

Mol	Chain	Residues	Atoms					ZeroOcc	AltConf	Trace
			Total	C	N	O	S			
3	L	216	1683	1056	288	333	6	0	0	0

- Molecule 4 is an oligosaccharide called beta-D-mannopyranose-(1-4)-2-acetamido-2-deoxy-beta-D-glucopyranose-(1-4)-2-acetamido-2-deoxy-beta-D-glucopyranose.



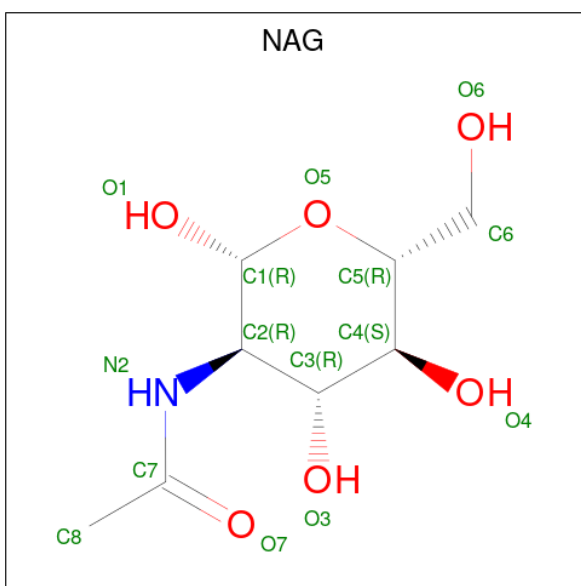
Mol	Chain	Residues	Atoms				ZeroOcc	AltConf	Trace
			Total	C	N	O			
4	B	3	39	22	2	15	0	0	0

- Molecule 5 is an oligosaccharide called 2-acetamido-2-deoxy-beta-D-glucopyranose-(1-4)-2-acetamido-2-deoxy-beta-D-glucopyranose.



Mol	Chain	Residues	Atoms				ZeroOcc	AltConf	Trace
5	C	2	Total	C	N	O	0	0	0
			28	16	2	10			
5	D	2	Total	C	N	O	0	0	0
			28	16	2	10			

- Molecule 6 is 2-acetamido-2-deoxy-beta-D-glucopyranose (three-letter code: NAG) (formula:  $C_8H_{15}NO_6$ ).



Mol	Chain	Residues	Atoms				ZeroOcc	AltConf
6	A	1	Total	C	N	O	0	0
			14	8	1	5		

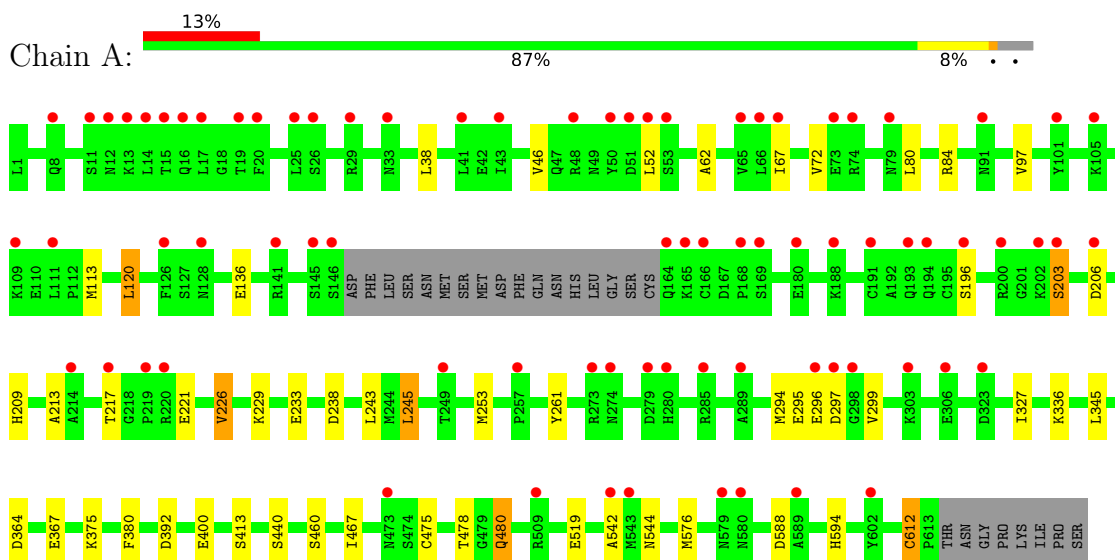
- Molecule 7 is water.

Mol	Chain	Residues	Atoms		ZeroOcc	AltConf
7	A	158	Total	O	0	0
			158	158		
7	H	73	Total	O	0	0
			73	73		
7	L	139	Total	O	0	0
			139	139		

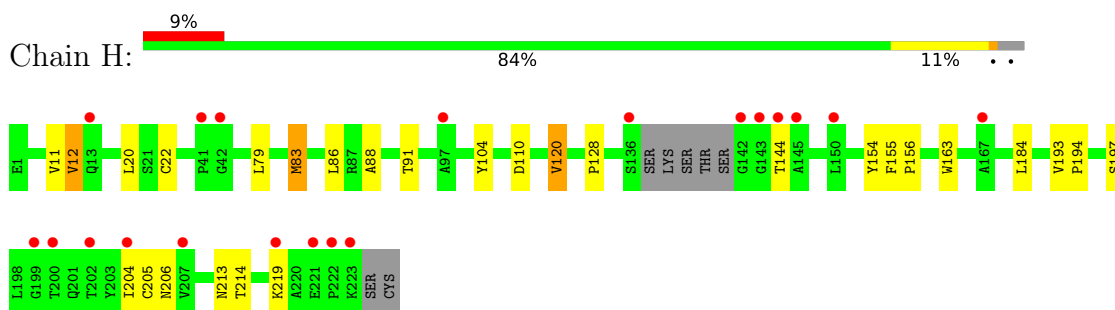
### 3 Residue-property plots [i](#)

These plots are drawn for all protein, RNA, DNA and oligosaccharide chains in the entry. The first graphic for a chain summarises the proportions of the various outlier classes displayed in the second graphic. The second graphic shows the sequence view annotated by issues in geometry and electron density. Residues are color-coded according to the number of geometric quality criteria for which they contain at least one outlier: green = 0, yellow = 1, orange = 2 and red = 3 or more. A red dot above a residue indicates a poor fit to the electron density ( $RSRZ > 2$ ). Stretches of 2 or more consecutive residues without any outlier are shown as a green connector. Residues present in the sample, but not in the model, are shown in grey.

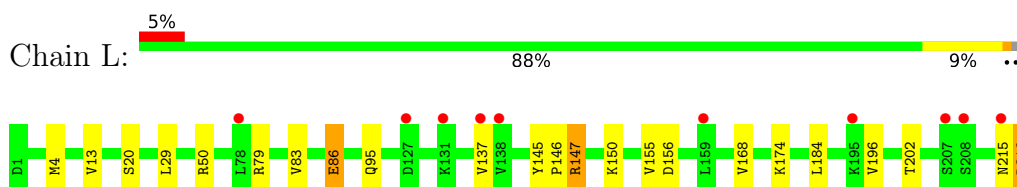
- Molecule 1: EPIDERMAL GROWTH FACTOR RECEPTOR



- Molecule 2: GC1118A



- Molecule 3: GC1118A



- Molecule 4: beta-D-mannopyranose-(1-4)-2-acetamido-2-deoxy-beta-D-glucopyranose-(1-4)-2-acetamido-2-deoxy-beta-D-glucopyranose

Chain B:  67% 33%

MAG1  
MAG2  
BMA3

- Molecule 5: 2-acetamido-2-deoxy-beta-D-glucopyranose-(1-4)-2-acetamido-2-deoxy-beta-D-glucopyranose

Chain C:  50% 50%

MAG1  
MAG2

- Molecule 5: 2-acetamido-2-deoxy-beta-D-glucopyranose-(1-4)-2-acetamido-2-deoxy-beta-D-glucopyranose

Chain D:  100%

MAG1  
MAG2

## 4 Data and refinement statistics

Property	Value	Source
Space group	P 1 21 1	Depositor
Cell constants a, b, c, $\alpha$ , $\beta$ , $\gamma$	78.39Å 84.17Å 97.79Å 90.00° 97.11° 90.00°	Depositor
Resolution (Å)	19.75 – 2.10 19.75 – 2.10	Depositor EDS
% Data completeness (in resolution range)	99.7 (19.75-2.10) 99.8 (19.75-2.10)	Depositor EDS
$R_{merge}$	0.09	Depositor
$R_{sym}$	(Not available)	Depositor
$\langle I/\sigma(I) \rangle$ <sup>1</sup>	4.01 (at 2.09Å)	Xtrriage
Refinement program	REFMAC 5.8.0073	Depositor
R, $R_{free}$	0.202 , 0.248 0.208 , 0.251	Depositor DCC
$R_{free}$ test set	3710 reflections (5.04%)	wwPDB-VP
Wilson B-factor (Å <sup>2</sup> )	34.0	Xtrriage
Anisotropy	0.016	Xtrriage
Bulk solvent $k_{sol}$ (e/Å <sup>3</sup> ), $B_{sol}$ (Å <sup>2</sup> )	0.35 , 50.2	EDS
L-test for twinning <sup>2</sup>	$\langle  L  \rangle = 0.50$ , $\langle L^2 \rangle = 0.33$	Xtrriage
Estimated twinning fraction	No twinning to report.	Xtrriage
$F_o, F_c$ correlation	0.95	EDS
Total number of atoms	8385	wwPDB-VP
Average B, all atoms (Å <sup>2</sup> )	46.0	wwPDB-VP

Xtrriage's analysis on translational NCS is as follows: *The largest off-origin peak in the Patterson function is 4.00% of the height of the origin peak. No significant pseudotranslation is detected.*

<sup>1</sup>Intensities estimated from amplitudes.

<sup>2</sup>Theoretical values of  $\langle |L| \rangle$ ,  $\langle L^2 \rangle$  for acentric reflections are 0.5, 0.333 respectively for untwinned datasets, and 0.375, 0.2 for perfectly twinned datasets.



## 5 Model quality [i](#)

### 5.1 Standard geometry [i](#)

Bond lengths and bond angles in the following residue types are not validated in this section: BMA, NAG

The Z score for a bond length (or angle) is the number of standard deviations the observed value is removed from the expected value. A bond length (or angle) with  $|Z| > 5$  is considered an outlier worth inspection. RMSZ is the root-mean-square of all Z scores of the bond lengths (or angles).

Mol	Chain	Bond lengths		Bond angles	
		RMSZ	# Z  >5	RMSZ	# Z  >5
1	A	0.69	0/4671	0.73	2/6319 (0.0%)
2	H	0.85	0/1681	0.79	2/2287 (0.1%)
3	L	0.91	1/1724 (0.1%)	0.80	3/2346 (0.1%)
All	All	0.78	1/8076 (0.0%)	0.76	7/10952 (0.1%)

All (1) bond length outliers are listed below:

Mol	Chain	Res	Type	Atoms	Z	Observed(Å)	Ideal(Å)
3	L	20	SER	CB-OG	-5.71	1.34	1.42

All (7) bond angle outliers are listed below:

Mol	Chain	Res	Type	Atoms	Z	Observed(°)	Ideal(°)
2	H	110	ASP	CB-CG-OD1	5.96	123.66	118.30
3	L	50	ARG	NE-CZ-NH1	5.76	123.18	120.30
3	L	147	ARG	NE-CZ-NH2	-5.57	117.52	120.30
1	A	612	CYS	CA-CB-SG	-5.52	104.07	114.00
2	H	83	MET	CG-SD-CE	-5.21	91.87	100.20
1	A	392	ASP	CB-CG-OD1	5.16	122.94	118.30
3	L	147	ARG	NE-CZ-NH1	5.06	122.83	120.30

There are no chirality outliers.

There are no planarity outliers.

### 5.2 Too-close contacts [i](#)

In the following table, the Non-H and H(model) columns list the number of non-hydrogen atoms and hydrogen atoms in the chain respectively. The H(added) column lists the number of hydrogen atoms added and optimized by MolProbity. The Clashes column lists the number of clashes within

the asymmetric unit, whereas Symm-Clashes lists symmetry-related clashes.

Mol	Chain	Non-H	H(model)	H(added)	Clashes	Symm-Clashes
1	A	4583	0	4428	26	0
2	H	1640	0	1592	13	0
3	L	1683	0	1630	13	0
4	B	39	0	34	1	0
5	C	28	0	25	0	0
5	D	28	0	25	2	0
6	A	14	0	13	1	0
7	A	158	0	0	0	0
7	H	73	0	0	0	0
7	L	139	0	0	2	0
All	All	8385	0	7747	55	0

The all-atom clashscore is defined as the number of clashes found per 1000 atoms (including hydrogen atoms). The all-atom clashscore for this structure is 3.

All (55) close contacts within the same asymmetric unit are listed below, sorted by their clash magnitude.

Atom-1	Atom-2	Interatomic distance (Å)	Clash overlap (Å)
2:H:91:THR:HG22	2:H:120:VAL:H	1.38	0.88
1:A:213:ALA:HB3	1:A:226:VAL:HG23	1.71	0.73
1:A:542:ALA:O	1:A:544:ASN:ND2	2.21	0.73
1:A:475:CYS:O	1:A:478:THR:HG22	1.90	0.72
3:L:13:VAL:HG11	3:L:83:VAL:HG21	1.76	0.68
1:A:327:ILE:HD11	1:A:345:LEU:HD22	1.79	0.64
3:L:150:LYS:HB3	3:L:202:THR:HB	1.80	0.63
5:D:1:NAG:O3	5:D:2:NAG:O5	2.16	0.63
1:A:375:LYS:NZ	1:A:400:GLU:OE2	2.27	0.58
2:H:204:ILE:HG12	2:H:219:LYS:HG2	1.86	0.57
3:L:137:VAL:HG13	3:L:184:LEU:HB3	1.86	0.56
3:L:215:ASN:O	3:L:216:ARG:HB2	2.06	0.56
1:A:364:ASP:HB3	1:A:367:GLU:HG3	1.88	0.55
1:A:336:LYS:HG2	6:A:3371:NAG:H82	1.87	0.55
1:A:380:PHE:CD1	1:A:413:SER:HA	2.42	0.54
2:H:194:PRO:HB2	2:H:197:SER:HB2	1.90	0.53
1:A:229:LYS:NZ	1:A:238:ASP:O	2.40	0.51
3:L:13:VAL:HG11	3:L:83:VAL:CG2	2.41	0.51
1:A:67:ILE:O	1:A:97:VAL:HA	2.12	0.49
2:H:11:VAL:HG21	2:H:156:PRO:HG3	1.94	0.49
1:A:243:LEU:HD21	1:A:261:TYR:CE2	2.48	0.48
5:D:1:NAG:H62	5:D:2:NAG:H82	1.96	0.48

*Continued on next page...*

*Continued from previous page...*

Atom-1	Atom-2	Interatomic distance (Å)	Clash overlap (Å)
3:L:196:VAL:HG22	3:L:215:ASN:OD1	2.14	0.47
2:H:12:VAL:O	2:H:120:VAL:HA	2.14	0.47
1:A:209:HIS:CD2	1:A:221:GLU:HG3	2.50	0.47
3:L:29:LEU:HD22	3:L:95:GLN:HG2	1.97	0.46
1:A:38:LEU:O	1:A:62:ALA:HB3	2.16	0.46
2:H:163:TRP:CH2	2:H:205:CYS:HB3	2.51	0.46
1:A:233:GLU:OE1	1:A:233:GLU:HA	2.16	0.45
2:H:83:MET:HB3	2:H:86:LEU:HD21	2.00	0.44
3:L:155:VAL:O	3:L:156:ASP:C	2.54	0.44
1:A:440:SER:HA	1:A:467:ILE:O	2.18	0.44
1:A:588:ASP:OD2	1:A:594:HIS:NE2	2.40	0.44
1:A:46:VAL:HG11	1:A:52:LEU:HD11	1.99	0.44
1:A:80:LEU:HD23	1:A:113:MET:CE	2.48	0.44
2:H:128:PRO:HD2	2:H:214:THR:HG21	2.00	0.44
3:L:147:ARG:NH2	3:L:168:VAL:HG11	2.32	0.44
1:A:478:THR:HG23	1:A:480:GLN:NE2	2.33	0.43
2:H:128:PRO:HB3	2:H:154:TYR:HB3	2.00	0.43
3:L:4:MET:HE2	3:L:95:GLN:HB2	2.00	0.43
3:L:79:ARG:NE	7:L:2034:HOH:O	2.41	0.43
1:A:203:SER:HB3	1:A:206:ASP:OD1	2.19	0.43
2:H:155:PHE:HA	2:H:156:PRO:HA	1.86	0.43
1:A:296:GLU:HA	1:A:297:ASP:HA	1.75	0.42
1:A:84:ARG:HA	1:A:120:LEU:HB2	2.02	0.42
3:L:86:GLU:HB3	7:L:2090:HOH:O	2.19	0.42
1:A:245:LEU:O	1:A:253:MET:HA	2.20	0.41
2:H:22:CYS:HB3	2:H:79:LEU:HB3	2.02	0.41
1:A:67:ILE:HB	1:A:97:VAL:HB	2.02	0.41
2:H:88:ALA:O	2:H:91:THR:HG23	2.21	0.41
4:B:2:NAG:H61	4:B:3:BMA:C1	2.51	0.41
1:A:295:GLU:HA	1:A:299:VAL:O	2.21	0.41
2:H:20:LEU:HD11	2:H:83:MET:HE1	2.02	0.41
3:L:145:TYR:CG	3:L:146:PRO:HA	2.56	0.41
1:A:46:VAL:HG12	1:A:72:VAL:HB	2.03	0.40

There are no symmetry-related clashes.

## 5.3 Torsion angles [i](#)

### 5.3.1 Protein backbone [i](#)

In the following table, the Percentiles column shows the percent Ramachandran outliers of the chain as a percentile score with respect to all X-ray entries followed by that with respect to entries of similar resolution.

The Analysed column shows the number of residues for which the backbone conformation was analysed, and the total number of residues.

Mol	Chain	Analysed	Favoured	Allowed	Outliers	Percentiles	
1	A	592/621 (95%)	570 (96%)	22 (4%)	0	100	100
2	H	214/225 (95%)	208 (97%)	6 (3%)	0	100	100
3	L	214/219 (98%)	210 (98%)	4 (2%)	0	100	100
All	All	1020/1065 (96%)	988 (97%)	32 (3%)	0	100	100

There are no Ramachandran outliers to report.

### 5.3.2 Protein sidechains [i](#)

In the following table, the Percentiles column shows the percent sidechain outliers of the chain as a percentile score with respect to all X-ray entries followed by that with respect to entries of similar resolution.

The Analysed column shows the number of residues for which the sidechain conformation was analysed, and the total number of residues.

Mol	Chain	Analysed	Rotameric	Outliers	Percentiles	
1	A	519/542 (96%)	506 (98%)	13 (2%)	47	52
2	H	180/187 (96%)	172 (96%)	8 (4%)	28	28
3	L	192/194 (99%)	189 (98%)	3 (2%)	62	69
All	All	891/923 (96%)	867 (97%)	24 (3%)	44	48

All (24) residues with a non-rotameric sidechain are listed below:

Mol	Chain	Res	Type
1	A	120	LEU
1	A	136	GLU
1	A	196	SER
1	A	203	SER
1	A	217	THR

*Continued on next page...*

*Continued from previous page...*

Mol	Chain	Res	Type
1	A	226	VAL
1	A	245	LEU
1	A	294	MET
1	A	460	SER
1	A	480	GLN
1	A	519	GLU
1	A	576	MET
1	A	612	CYS
2	H	12	VAL
2	H	104	TYR
2	H	120	VAL
2	H	144	THR
2	H	184	LEU
2	H	193	VAL
2	H	206	ASN
2	H	213	ASN
3	L	86	GLU
3	L	174	LYS
3	L	216	ARG

Sometimes sidechains can be flipped to improve hydrogen bonding and reduce clashes. All (1) such sidechains are listed below:

Mol	Chain	Res	Type
1	A	544	ASN

### 5.3.3 RNA [i](#)

There are no RNA molecules in this entry.

## 5.4 Non-standard residues in protein, DNA, RNA chains [i](#)

There are no non-standard protein/DNA/RNA residues in this entry.

## 5.5 Carbohydrates [i](#)

7 monosaccharides are modelled in this entry.

In the following table, the Counts columns list the number of bonds (or angles) for which Mogul statistics could be retrieved, the number of bonds (or angles) that are observed in the model and the number of bonds (or angles) that are defined in the Chemical Component Dictionary. The

Link column lists molecule types, if any, to which the group is linked. The Z score for a bond length (or angle) is the number of standard deviations the observed value is removed from the expected value. A bond length (or angle) with  $|Z| > 2$  is considered an outlier worth inspection. RMSZ is the root-mean-square of all Z scores of the bond lengths (or angles).

Mol	Type	Chain	Res	Link	Bond lengths			Bond angles		
					Counts	RMSZ	# Z  > 2	Counts	RMSZ	# Z  > 2
4	NAG	B	1	4,1	14,14,15	1.06	1 (7%)	17,19,21	0.88	0
4	NAG	B	2	4	14,14,15	0.64	0	17,19,21	0.87	0
4	BMA	B	3	4	11,11,12	0.61	0	15,15,17	1.10	1 (6%)
5	NAG	C	1	5,1	14,14,15	0.63	0	17,19,21	0.97	1 (5%)
5	NAG	C	2	5	14,14,15	0.54	0	17,19,21	0.69	0
5	NAG	D	1	5,1	14,14,15	1.08	2 (14%)	17,19,21	1.47	4 (23%)
5	NAG	D	2	5	14,14,15	1.21	1 (7%)	17,19,21	1.73	5 (29%)

In the following table, the Chirals column lists the number of chiral outliers, the number of chiral centers analysed, the number of these observed in the model and the number defined in the Chemical Component Dictionary. Similar counts are reported in the Torsion and Rings columns. '-' means no outliers of that kind were identified.

Mol	Type	Chain	Res	Link	Chirals	Torsions	Rings
4	NAG	B	1	4,1	-	2/6/23/26	0/1/1/1
4	NAG	B	2	4	-	2/6/23/26	0/1/1/1
4	BMA	B	3	4	-	2/2/19/22	0/1/1/1
5	NAG	C	1	5,1	-	0/6/23/26	0/1/1/1
5	NAG	C	2	5	-	1/6/23/26	0/1/1/1
5	NAG	D	1	5,1	-	3/6/23/26	0/1/1/1
5	NAG	D	2	5	-	2/6/23/26	0/1/1/1

All (4) bond length outliers are listed below:

Mol	Chain	Res	Type	Atoms	Z	Observed(Å)	Ideal(Å)
5	D	2	NAG	O5-C1	4.12	1.50	1.43
4	B	1	NAG	O5-C1	-3.38	1.38	1.43
5	D	1	NAG	O5-C5	-2.56	1.38	1.43
5	D	1	NAG	O5-C1	-2.39	1.39	1.43

All (11) bond angle outliers are listed below:

Mol	Chain	Res	Type	Atoms	Z	Observed(°)	Ideal(°)
5	D	2	NAG	C1-C2-N2	-3.20	105.02	110.49
5	D	1	NAG	O5-C1-C2	-3.06	106.45	111.29

Continued on next page...

Continued from previous page...

Mol	Chain	Res	Type	Atoms	Z	Observed(°)	Ideal(°)
5	D	2	NAG	O7-C7-C8	-2.76	116.93	122.06
5	D	2	NAG	C2-N2-C7	2.61	126.61	122.90
5	D	1	NAG	O5-C5-C4	-2.39	105.01	110.83
5	D	2	NAG	C1-O5-C5	-2.25	109.15	112.19
5	D	1	NAG	O6-C6-C5	-2.21	103.72	111.29
4	B	3	BMA	C1-C2-C3	2.18	112.35	109.67
5	C	1	NAG	O5-C5-C6	2.18	110.62	107.20
5	D	2	NAG	O7-C7-N2	2.17	125.94	121.95
5	D	1	NAG	O3-C3-C2	-2.05	105.21	109.47

There are no chirality outliers.

All (12) torsion outliers are listed below:

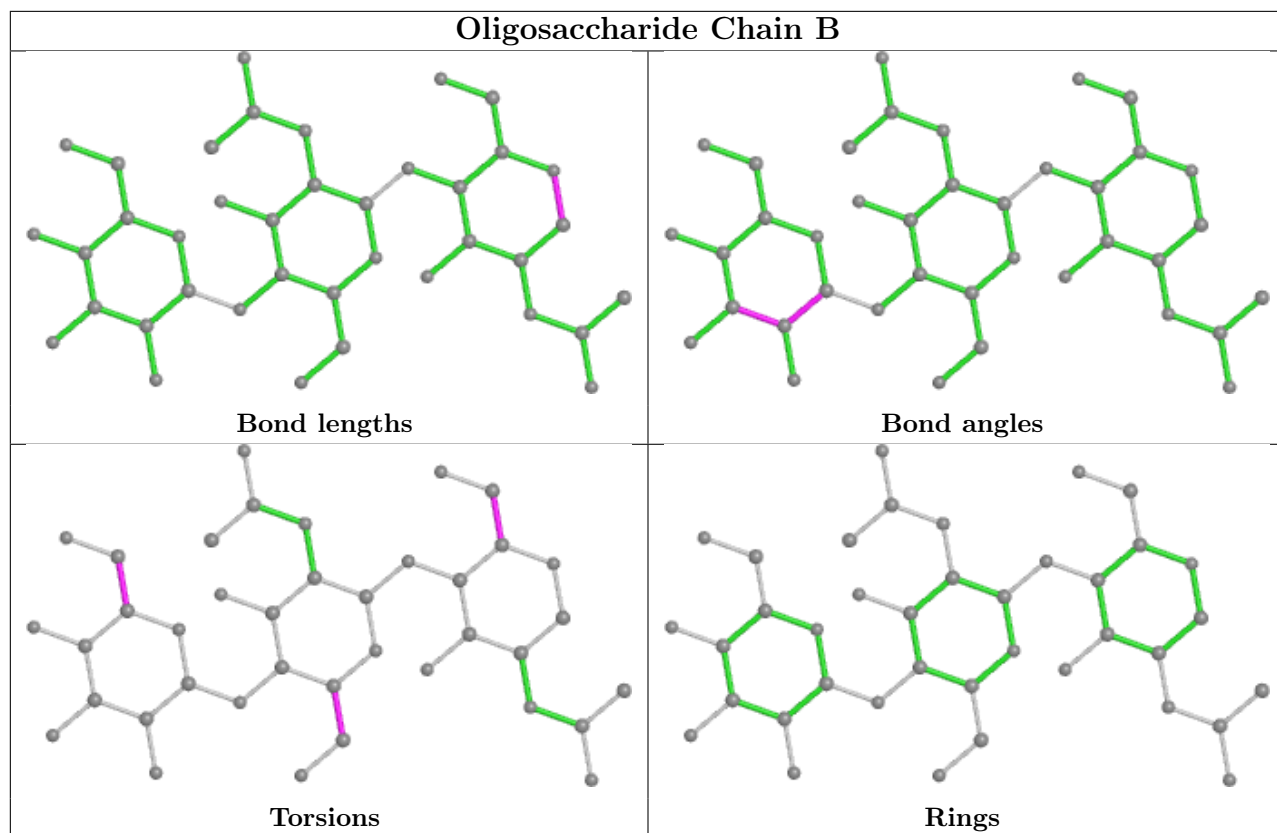
Mol	Chain	Res	Type	Atoms
4	B	3	BMA	O5-C5-C6-O6
5	D	2	NAG	O5-C5-C6-O6
5	D	2	NAG	C4-C5-C6-O6
4	B	3	BMA	C4-C5-C6-O6
4	B	2	NAG	O5-C5-C6-O6
5	D	1	NAG	O5-C5-C6-O6
4	B	2	NAG	C4-C5-C6-O6
4	B	1	NAG	C4-C5-C6-O6
5	D	1	NAG	C4-C5-C6-O6
4	B	1	NAG	O5-C5-C6-O6
5	D	1	NAG	C3-C2-N2-C7
5	C	2	NAG	O5-C5-C6-O6

There are no ring outliers.

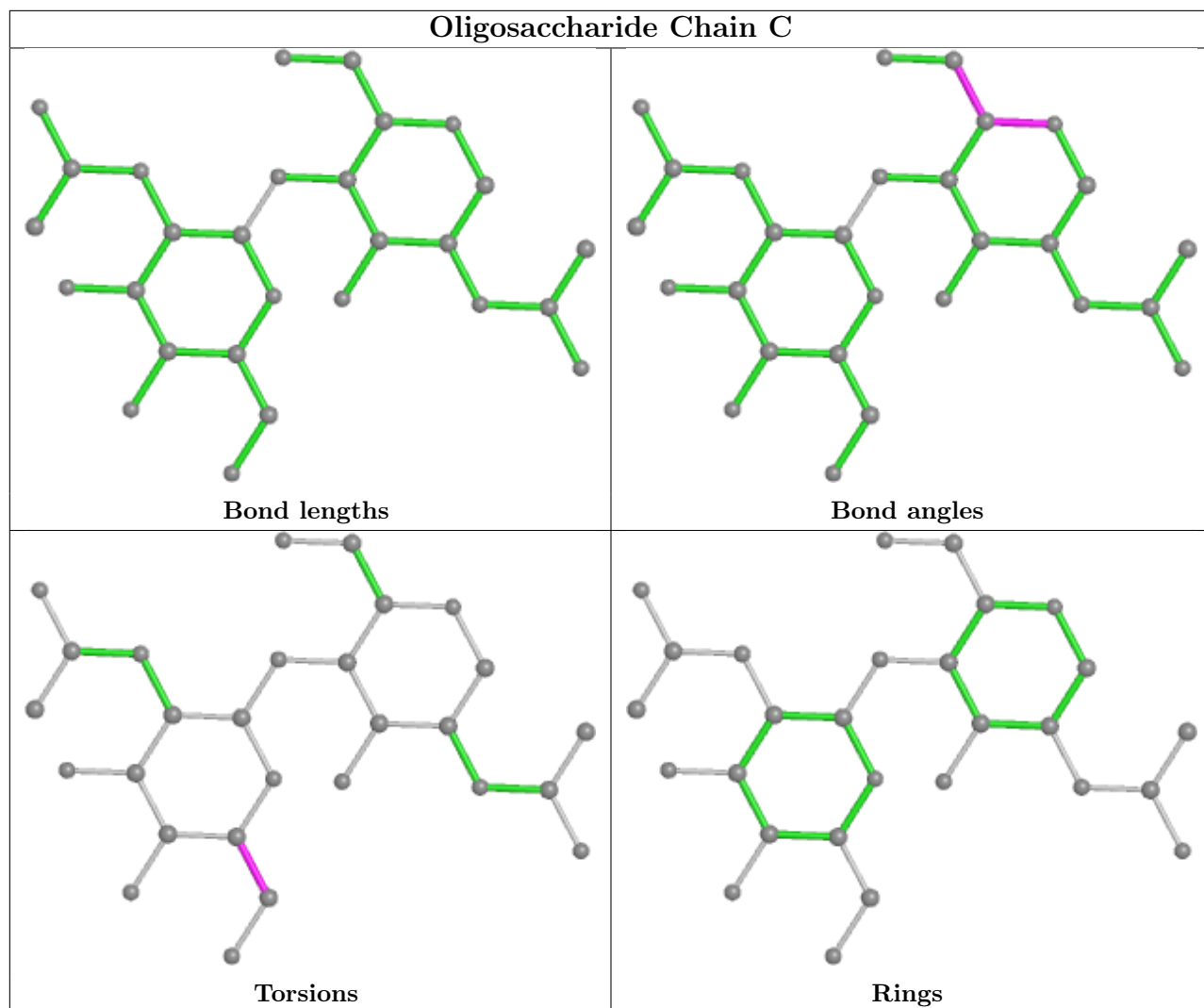
4 monomers are involved in 3 short contacts:

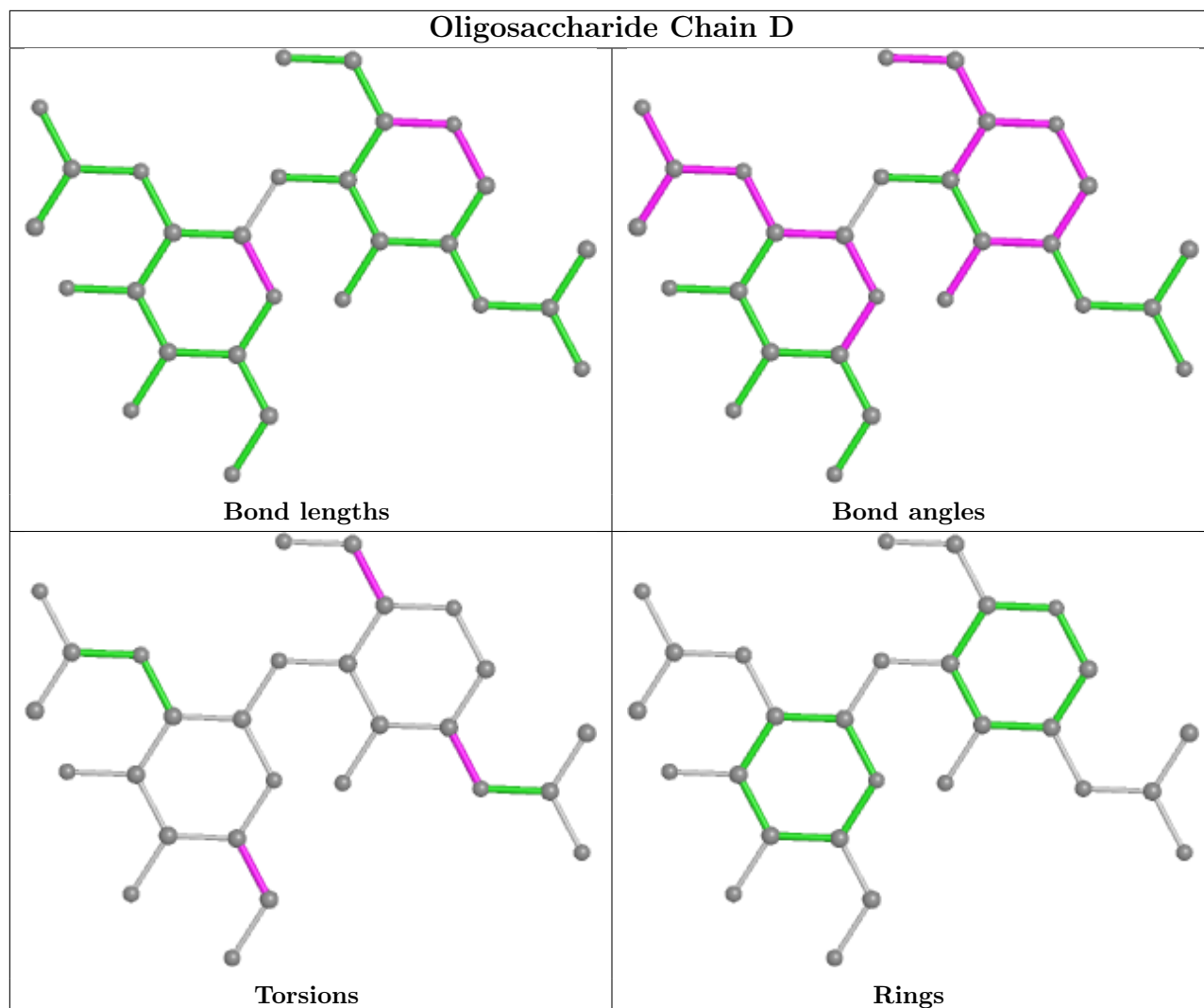
Mol	Chain	Res	Type	Clashes	Symm-Clashes
4	B	3	BMA	1	0
5	D	2	NAG	2	0
5	D	1	NAG	2	0
4	B	2	NAG	1	0

The following is a two-dimensional graphical depiction of Mogul quality analysis of bond lengths, bond angles, torsion angles, and ring geometry for oligosaccharide.









## 5.6 Ligand geometry [i](#)

1 ligand is modelled in this entry.

In the following table, the Counts columns list the number of bonds (or angles) for which Mogul statistics could be retrieved, the number of bonds (or angles) that are observed in the model and the number of bonds (or angles) that are defined in the Chemical Component Dictionary. The Link column lists molecule types, if any, to which the group is linked. The Z score for a bond length (or angle) is the number of standard deviations the observed value is removed from the expected value. A bond length (or angle) with  $|Z| > 2$  is considered an outlier worth inspection. RMSZ is the root-mean-square of all Z scores of the bond lengths (or angles).

Mol	Type	Chain	Res	Link	Bond lengths			Bond angles		
					Counts	RMSZ	$\# Z  > 2$	Counts	RMSZ	$\# Z  > 2$
6	NAG	A	3371	1	14,14,15	0.60	0	17,19,21	1.46	2 (11%)

In the following table, the Chirals column lists the number of chiral outliers, the number of chiral

centers analysed, the number of these observed in the model and the number defined in the Chemical Component Dictionary. Similar counts are reported in the Torsion and Rings columns. '-' means no outliers of that kind were identified.

Mol	Type	Chain	Res	Link	Chirals	Torsions	Rings
6	NAG	A	3371	1	-	2/6/23/26	0/1/1/1

There are no bond length outliers.

All (2) bond angle outliers are listed below:

Mol	Chain	Res	Type	Atoms	Z	Observed(°)	Ideal(°)
6	A	3371	NAG	O5-C5-C6	3.62	112.88	107.20
6	A	3371	NAG	C1-O5-C5	2.91	116.14	112.19

There are no chirality outliers.

All (2) torsion outliers are listed below:

Mol	Chain	Res	Type	Atoms
6	A	3371	NAG	O5-C5-C6-O6
6	A	3371	NAG	C4-C5-C6-O6

There are no ring outliers.

1 monomer is involved in 1 short contact:

Mol	Chain	Res	Type	Clashes	Symm-Clashes
6	A	3371	NAG	1	0

## 5.7 Other polymers [i](#)

There are no such residues in this entry.

## 5.8 Polymer linkage issues [i](#)

There are no chain breaks in this entry.

## 6 Fit of model and data

### 6.1 Protein, DNA and RNA chains

In the following table, the column labelled ‘#RSRZ > 2’ contains the number (and percentage) of RSRZ outliers, followed by percent RSRZ outliers for the chain as percentile scores relative to all X-ray entries and entries of similar resolution. The OWAB column contains the minimum, median, 95<sup>th</sup> percentile and maximum values of the occupancy-weighted average B-factor per residue. The column labelled ‘Q < 0.9’ lists the number of (and percentage) of residues with an average occupancy less than 0.9.

Mol	Chain	Analysed	<RSRZ>	#RSRZ>2	OWAB(Å <sup>2</sup> )	Q<0.9
1	A	596/621 (95%)	0.66	78 (13%) <b>3</b> <b>4</b>	21, 50, 82, 108	0
2	H	218/225 (96%)	0.54	20 (9%) <b>9</b> <b>11</b>	21, 42, 75, 88	0
3	L	216/219 (98%)	0.29	10 (4%) <b>32</b> <b>38</b>	19, 33, 59, 75	0
All	All	1030/1065 (96%)	0.56	108 (10%) <b>6</b> <b>8</b>	19, 44, 78, 108	0

All (108) RSRZ outliers are listed below:

Mol	Chain	Res	Type	RSRZ
1	A	274	ASN	6.7
1	A	194	GLN	6.1
1	A	220	ARG	5.0
2	H	200	THR	4.9
1	A	43	ILE	4.7
2	H	223	LYS	4.5
1	A	509	ARG	4.5
1	A	12	ASN	4.3
2	H	41	PRO	4.3
3	L	127	ASP	4.2
2	H	219	LYS	4.2
2	H	143	GLY	4.1
1	A	67	ILE	4.1
1	A	17	LEU	4.1
1	A	15	THR	4.0
1	A	191	CYS	4.0
1	A	164	GLN	3.8
1	A	193	GLN	3.8
1	A	101	TYR	3.6
1	A	146	SER	3.6
1	A	166	CYS	3.6
1	A	33	ASN	3.5
1	A	542	ALA	3.5

*Continued on next page...*

*Continued from previous page...*

<b>Mol</b>	<b>Chain</b>	<b>Res</b>	<b>Type</b>	<b>RSRZ</b>
1	A	16	GLN	3.5
1	A	202	LYS	3.5
2	H	199	GLY	3.4
1	A	13	LYS	3.4
1	A	543	MET	3.4
3	L	215	ASN	3.4
1	A	180	GLU	3.3
1	A	219	PRO	3.3
1	A	165	LYS	3.3
1	A	579	ASN	3.3
1	A	249	THR	3.3
1	A	280	HIS	3.3
1	A	602	TYR	3.2
3	L	159	LEU	3.2
2	H	202	THR	3.2
1	A	8	GLN	3.2
2	H	144	THR	3.2
1	A	273	ARG	3.2
1	A	25	LEU	3.1
1	A	196	SER	3.1
1	A	48	ARG	3.0
1	A	289	ALA	3.0
1	A	11	SER	3.0
1	A	50	TYR	3.0
1	A	297	ASP	2.9
2	H	142	GLY	2.9
1	A	66	LEU	2.9
2	H	136	SER	2.9
1	A	296	GLU	2.8
1	A	168	PRO	2.8
1	A	141	ARG	2.8
1	A	41	LEU	2.8
3	L	208	SER	2.8
1	A	20	PHE	2.7
1	A	145	SER	2.7
1	A	109	LYS	2.7
1	A	214	ALA	2.7
1	A	298	GLY	2.7
1	A	14	LEU	2.7
1	A	26	SER	2.6
1	A	206	ASP	2.6
1	A	51	ASP	2.5

*Continued on next page...*

*Continued from previous page...*

<b>Mol</b>	<b>Chain</b>	<b>Res</b>	<b>Type</b>	<b>RSRZ</b>
1	A	473	ASN	2.5
1	A	53	SER	2.5
1	A	169	SER	2.5
3	L	138	VAL	2.4
2	H	97	ALA	2.4
1	A	65	VAL	2.4
3	L	131	LYS	2.4
2	H	222	PRO	2.4
1	A	303	LYS	2.4
1	A	279	ASP	2.4
3	L	207	SER	2.4
2	H	204	ILE	2.3
1	A	111	LEU	2.3
1	A	589	ALA	2.3
2	H	167	ALA	2.2
1	A	19	THR	2.2
1	A	52	LEU	2.2
1	A	74	ARG	2.2
1	A	91	ASN	2.2
1	A	188	LYS	2.2
3	L	78	LEU	2.2
1	A	79	ASN	2.2
3	L	137	VAL	2.2
1	A	73	GLU	2.2
1	A	257	PRO	2.2
1	A	323	ASP	2.2
2	H	150	LEU	2.1
1	A	203	SER	2.1
1	A	580	ASN	2.1
1	A	217	THR	2.1
1	A	285	ARG	2.1
1	A	200	ARG	2.1
1	A	128	ASN	2.0
1	A	29	ARG	2.0
1	A	126	PHE	2.0
2	H	13	GLN	2.0
1	A	306	GLU	2.0
2	H	221	GLU	2.0
2	H	145	ALA	2.0
1	A	105	LYS	2.0
2	H	42	GLY	2.0
2	H	207	VAL	2.0

*Continued on next page...*

*Continued from previous page...*

Mol	Chain	Res	Type	RSRZ
3	L	195	LYS	2.0

## 6.2 Non-standard residues in protein, DNA, RNA chains [\(i\)](#)

There are no non-standard protein/DNA/RNA residues in this entry.

## 6.3 Carbohydrates [\(i\)](#)

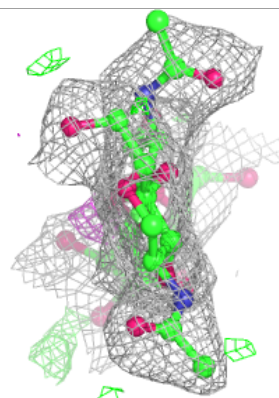
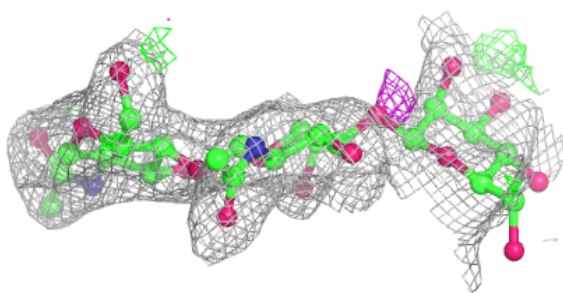
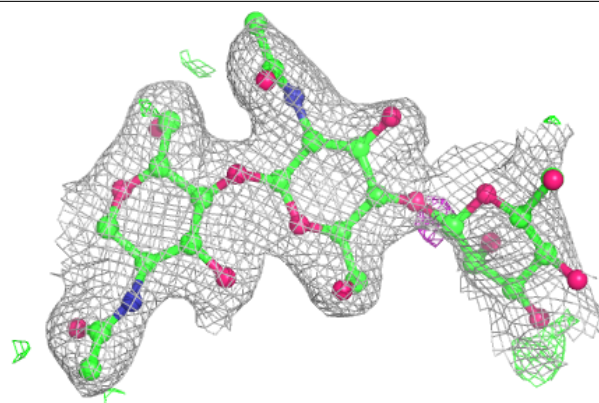
In the following table, the Atoms column lists the number of modelled atoms in the group and the number defined in the chemical component dictionary. The B-factors column lists the minimum, median, 95<sup>th</sup> percentile and maximum values of B factors of atoms in the group. The column labelled 'Q< 0.9' lists the number of atoms with occupancy less than 0.9.

Mol	Type	Chain	Res	Atoms	RSCC	RSR	B-factors(Å <sup>2</sup> )	Q<0.9
4	BMA	B	3	11/12	0.60	0.39	80,92,108,111	0
5	NAG	C	2	14/15	0.74	0.45	82,96,105,107	0
5	NAG	D	2	14/15	0.74	0.36	58,64,68,69	0
5	NAG	D	1	14/15	0.82	0.28	57,66,76,78	0
4	NAG	B	2	14/15	0.88	0.23	43,54,68,81	0
4	NAG	B	1	14/15	0.88	0.14	34,40,46,50	0
5	NAG	C	1	14/15	0.88	0.20	48,53,60,73	0

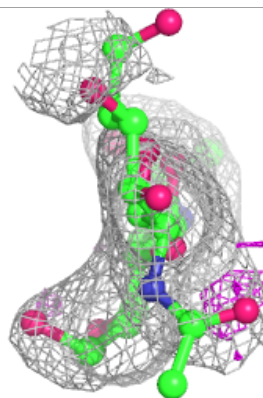
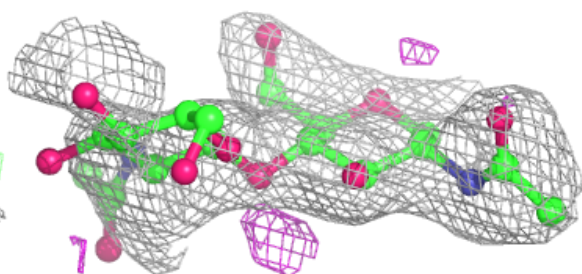
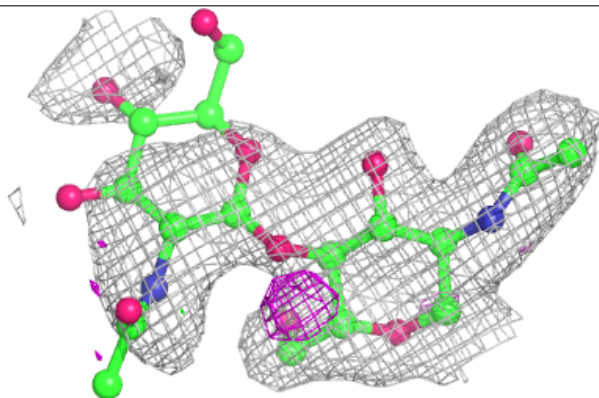
The following is a graphical depiction of the model fit to experimental electron density for oligosaccharide. Each fit is shown from different orientation to approximate a three-dimensional view.

**Electron density around Chain B:**

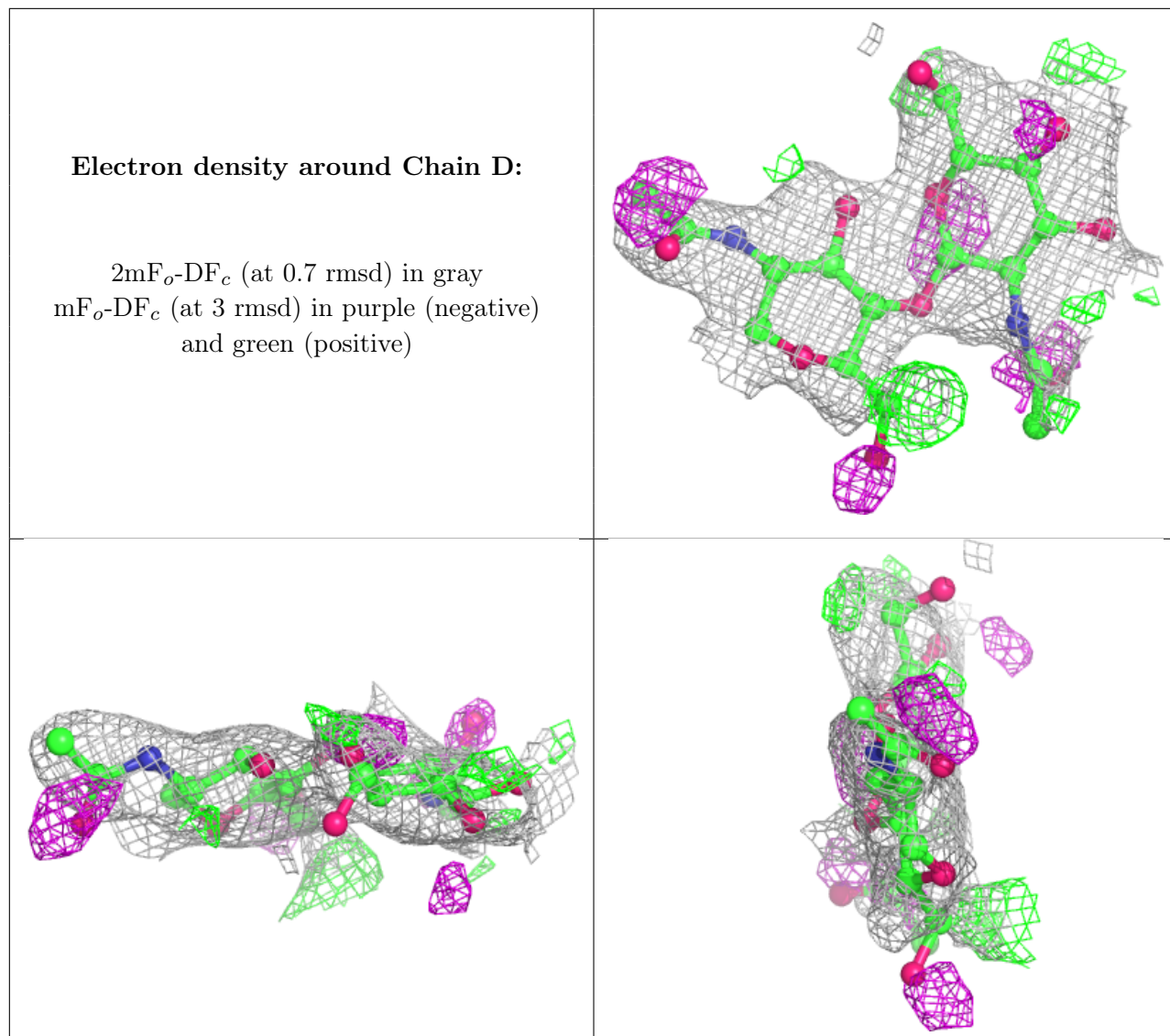
$2mF_o-DF_c$  (at 0.7 rmsd) in gray  
 $mF_o-DF_c$  (at 3 rmsd) in purple (negative)  
and green (positive)

**Electron density around Chain C:**

$2mF_o-DF_c$  (at 0.7 rmsd) in gray  
 $mF_o-DF_c$  (at 3 rmsd) in purple (negative)  
and green (positive)







## 6.4 Ligands [i](#)

In the following table, the Atoms column lists the number of modelled atoms in the group and the number defined in the chemical component dictionary. The B-factors column lists the minimum, median, 95<sup>th</sup> percentile and maximum values of B factors of atoms in the group. The column labelled 'Q<0.9' lists the number of atoms with occupancy less than 0.9.

Mol	Type	Chain	Res	Atoms	RSCC	RSR	B-factors( $\text{\AA}^2$ )	Q<0.9
6	NAG	A	3371	14/15	0.85	0.34	58,66,84,91	0

## 6.5 Other polymers [i](#)

There are no such residues in this entry.