



Full wwPDB X-ray Structure Validation Report ⓘ

Nov 3, 2024 – 01:47 am GMT

PDB ID : 4UH7
Title : Structure of bovine endothelial nitric oxide synthase heme domain in complex with N1-(3-(2-(6-Amino-4-methylpyridin-2-yl)ethyl)phenyl)-N1, N2-dimethyl ethane-1,2-diamine
Authors : Chreifi, G.; Li, H.; Poulos, T.L.
Deposited on : 2015-03-23
Resolution : 2.23 Å(reported)

This is a Full wwPDB X-ray Structure Validation Report for a publicly released PDB entry.

We welcome your comments at validation@mail.wwpdb.org

A user guide is available at

<https://www.wwpdb.org/validation/2017/XrayValidationReportHelp>

with specific help available everywhere you see the ⓘ symbol.

The types of validation reports are described at

<http://www.wwpdb.org/validation/2017/FAQs#types>.

The following versions of software and data (see [references ⓘ](#)) were used in the production of this report:

MolProbity : 4.02b-467
Mogul : 1.8.4, CSD as541be (2020)
Xtriage (Phenix) : 1.13
EDS : 3.0
buster-report : 1.1.7 (2018)
Percentile statistics : 20231227.v01 (using entries in the PDB archive December 27th 2023)
CCP4 : 9.0.003 (Gargrove)
Density-Fitness : 1.0.11
Ideal geometry (proteins) : Engh & Huber (2001)
Ideal geometry (DNA, RNA) : Parkinson et al. (1996)
Validation Pipeline (wwPDB-VP) : 2.39

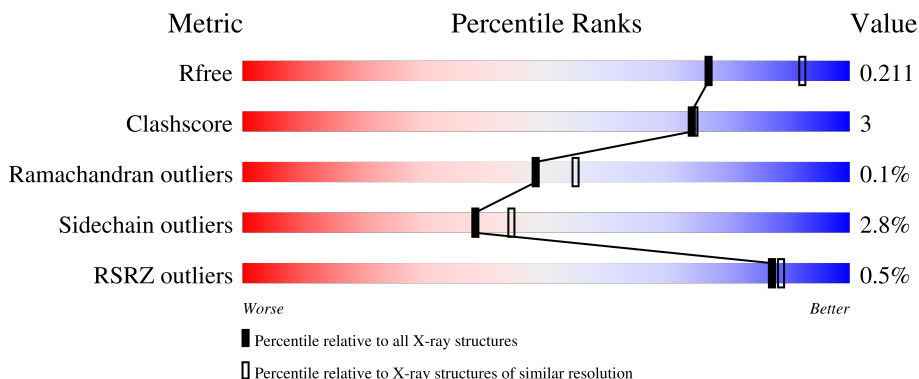
1 Overall quality at a glance

The following experimental techniques were used to determine the structure:

X-RAY DIFFRACTION

The reported resolution of this entry is 2.23 Å.

Percentile scores (ranging between 0-100) for global validation metrics of the entry are shown in the following graphic. The table shows the number of entries on which the scores are based.



Metric	Whole archive (#Entries)	Similar resolution (#Entries, resolution range(Å))
R_{free}	164625	3139 (2.26-2.22)
Clashscore	180529	3381 (2.26-2.22)
Ramachandran outliers	177936	3334 (2.26-2.22)
Sidechain outliers	177891	3335 (2.26-2.22)
RSRZ outliers	164620	3138 (2.26-2.22)

The table below summarises the geometric issues observed across the polymeric chains and their fit to the electron density. The red, orange, yellow and green segments of the lower bar indicate the fraction of residues that contain outliers for ≥ 3 , 2, 1 and 0 types of geometric quality criteria respectively. A grey segment represents the fraction of residues that are not modelled. The numeric value for each fraction is indicated below the corresponding segment, with a dot representing fractions $\leq 5\%$. The upper red bar (where present) indicates the fraction of residues that have poor fit to the electron density. The numeric value is given above the bar.

Mol	Chain	Length	Quality of chain
1	A	443	 85% 6% • 9%
1	B	443	 83% 7% • 9%

2 Entry composition [i](#)

There are 8 unique types of molecules in this entry. The entry contains 7002 atoms, of which 0 are hydrogens and 0 are deuteriums.

In the tables below, the ZeroOcc column contains the number of atoms modelled with zero occupancy, the AltConf column contains the number of residues with at least one atom in alternate conformation and the Trace column contains the number of residues modelled with at most 2 atoms.

- Molecule 1 is a protein called NITRIC OXIDE SYNTHASE, ENDOTHELIAL.

Mol	Chain	Residues	Atoms					ZeroOcc	AltConf	Trace	
			Total	As	C	N	O				S
1	A	404	3225	1	2051	567	590	16	0	2	0
1	B	403	3212	1	2042	566	587	16	0	0	0

There are 2 discrepancies between the modelled and reference sequences:

Chain	Residue	Modelled	Actual	Comment	Reference
A	100	ARG	CYS	conflict	UNP P29473
B	100	ARG	CYS	conflict	UNP P29473

- Molecule 2 is PROTOPORPHYRIN IX CONTAINING FE (three-letter code: HEM) (formula: $C_{34}H_{32}FeN_4O_4$).



Mol	Chain	Residues	Atoms				ZeroOcc	AltConf	
			Total	C	Fe	N			O
2	A	1	43	34	1	4	4	0	0

Continued on next page...

Continued from previous page...

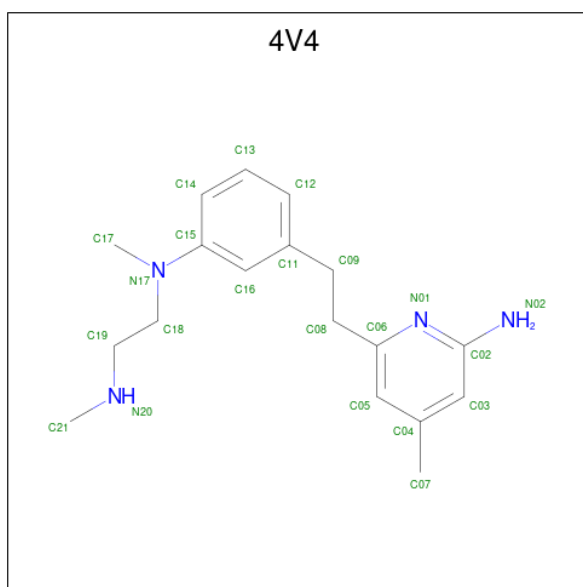
Mol	Chain	Residues	Atoms				ZeroOcc	AltConf	
			Total	C	Fe	N			O
2	B	1	43	34	1	4	4	0	0

- Molecule 3 is 5,6,7,8-TETRAHYDROBIOPTERIN (three-letter code: H4B) (formula: $C_9H_{15}N_5O_3$).



Mol	Chain	Residues	Atoms				ZeroOcc	AltConf
			Total	C	N	O		
3	A	1	17	9	5	3	0	0
3	B	1	17	9	5	3	0	0

- Molecule 4 is N1-(3-(2-(6-Amino-4-methylpyridin-2-yl)ethyl)phenyl)-N1,N2-dimethylethane-1,2-diamine (three-letter code: 4V4) (formula: $C_{18}H_{26}N_4$).



Mol	Chain	Residues	Atoms			ZeroOcc	AltConf
4	A	1	Total	C	N	0	1
			28	22	6		
4	A	1	Total	C	N	0	0
			22	18	4		
4	B	1	Total	C	N	0	1
			28	22	6		

- Molecule 5 is ACETATE ION (three-letter code: ACT) (formula: C₂H₃O₂).



Mol	Chain	Residues	Atoms			ZeroOcc	AltConf
5	A	1	Total	C	O	0	0
			4	2	2		

Continued on next page...

Continued from previous page...

Mol	Chain	Residues	Atoms			ZeroOcc	AltConf
5	A	1	Total	C	O	0	0
			4	2	2		
5	B	1	Total	C	O	0	0
			4	2	2		
5	B	1	Total	C	O	0	0
			4	2	2		

- Molecule 6 is GLYCEROL (three-letter code: GOL) (formula: $C_3H_8O_3$).



Mol	Chain	Residues	Atoms			ZeroOcc	AltConf
6	A	1	Total	C	O	0	0
			6	3	3		
6	B	1	Total	C	O	0	0
			6	3	3		

- Molecule 7 is ZINC ION (three-letter code: ZN) (formula: Zn).

Mol	Chain	Residues	Atoms		ZeroOcc	AltConf
7	A	1	Total	Zn	0	0
			1	1		

- Molecule 8 is water.

Mol	Chain	Residues	Atoms		ZeroOcc	AltConf
8	A	184	Total	O	0	0
			184	184		

Continued on next page...


Continued from previous page...

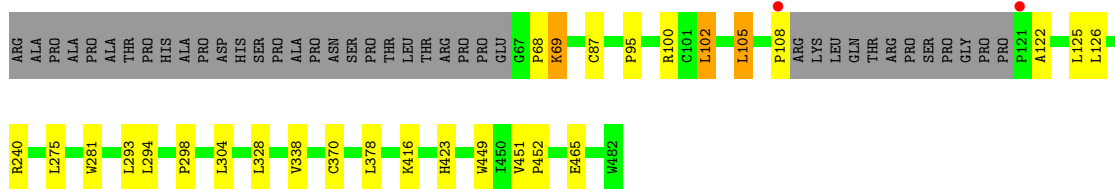
Mol	Chain	Residues	Atoms		ZeroOcc	AltConf
8	B	154	Total 154	O 154	0	0

3 Residue-property plots [i](#)


These plots are drawn for all protein, RNA, DNA and oligosaccharide chains in the entry. The first graphic for a chain summarises the proportions of the various outlier classes displayed in the second graphic. The second graphic shows the sequence view annotated by issues in geometry and electron density. Residues are color-coded according to the number of geometric quality criteria for which they contain at least one outlier: green = 0, yellow = 1, orange = 2 and red = 3 or more. A red dot above a residue indicates a poor fit to the electron density ($RSRZ > 2$). Stretches of 2 or more consecutive residues without any outlier are shown as a green connector. Residues present in the sample, but not in the model, are shown in grey.

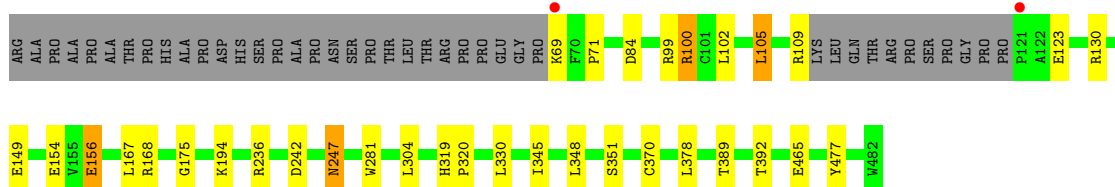
- Molecule 1: NITRIC OXIDE SYNTHASE, ENDOTHELIAL

Chain A:  85% 6% 9%



- Molecule 1: NITRIC OXIDE SYNTHASE, ENDOTHELIAL

Chain B:  83% 7% 9%



4 Data and refinement statistics

Property	Value	Source
Space group	P 21 21 21	Depositor
Cell constants a, b, c, α , β , γ	58.00Å 106.41Å 157.23Å 90.00° 90.00° 90.00°	Depositor
Resolution (Å)	48.45 – 2.23 48.45 – 2.23	Depositor EDS
% Data completeness (in resolution range)	99.2 (48.45-2.23) 99.2 (48.45-2.23)	Depositor EDS
R_{merge}	0.06	Depositor
R_{sym}	(Not available)	Depositor
$\langle I/\sigma(I) \rangle$ ¹	2.74 (at 2.24Å)	Xtrriage
Refinement program	PHENIX (PHENIX.REFINE)	Depositor
R, R_{free}	0.159 , 0.211 0.159 , 0.211	Depositor DCC
R_{free} test set	2365 reflections (4.97%)	wwPDB-VP
Wilson B-factor (Å ²)	46.7	Xtrriage
Anisotropy	0.581	Xtrriage
Bulk solvent k_{sol} (e/Å ³), B_{sol} (Å ²)	0.35 , 44.2	EDS
L-test for twinning ²	$\langle L \rangle = 0.49$, $\langle L^2 \rangle = 0.33$	Xtrriage
Estimated twinning fraction	No twinning to report.	Xtrriage
F_o, F_c correlation	0.97	EDS
Total number of atoms	7002	wwPDB-VP
Average B, all atoms (Å ²)	47.0	wwPDB-VP

Xtrriage's analysis on translational NCS is as follows: *The largest off-origin peak in the Patterson function is 3.45% of the height of the origin peak. No significant pseudotranslation is detected.*

¹Intensities estimated from amplitudes.

²Theoretical values of $\langle |L| \rangle$, $\langle L^2 \rangle$ for acentric reflections are 0.5, 0.333 respectively for untwinned datasets, and 0.375, 0.2 for perfectly twinned datasets.

5 Model quality

5.1 Standard geometry

Bond lengths and bond angles in the following residue types are not validated in this section: H4B, ZN, 4V4, CAS, HEM, ACT, GOL

The Z score for a bond length (or angle) is the number of standard deviations the observed value is removed from the expected value. A bond length (or angle) with $|Z| > 5$ is considered an outlier worth inspection. RMSZ is the root-mean-square of all Z scores of the bond lengths (or angles).

Mol	Chain	Bond lengths		Bond angles	
		RMSZ	# Z >5	RMSZ	# Z >5
1	A	0.37	0/3311	0.53	0/4508
1	B	0.34	0/3291	0.50	0/4480
All	All	0.36	0/6602	0.52	0/8988

There are no bond length outliers.

There are no bond angle outliers.

There are no chirality outliers.

There are no planarity outliers.

5.2 Too-close contacts

In the following table, the Non-H and H(model) columns list the number of non-hydrogen atoms and hydrogen atoms in the chain respectively. The H(added) column lists the number of hydrogen atoms added and optimized by MolProbity. The Clashes column lists the number of clashes within the asymmetric unit, whereas Symm-Clashes lists symmetry-related clashes.

Mol	Chain	Non-H	H(model)	H(added)	Clashes	Symm-Clashes
1	A	3225	0	3131	18	0
1	B	3212	0	3117	19	0
2	A	43	0	30	4	0
2	B	43	0	30	5	0
3	A	17	0	15	1	0
3	B	17	0	15	0	0
4	A	50	0	48	0	0
4	B	28	0	22	0	0
5	A	8	0	6	0	0
5	B	8	0	6	0	0
6	A	6	0	8	0	0

Continued on next page...

Continued from previous page...

Mol	Chain	Non-H	H(model)	H(added)	Clashes	Symm-Clashes
6	B	6	0	8	0	0
7	A	1	0	0	0	0
8	A	184	0	0	1	0
8	B	154	0	0	0	0
All	All	7002	0	6436	39	0

The all-atom clashscore is defined as the number of clashes found per 1000 atoms (including hydrogen atoms). The all-atom clashscore for this structure is 3.

All (39) close contacts within the same asymmetric unit are listed below, sorted by their clash magnitude.

Atom-1	Atom-2	Interatomic distance (Å)	Clash overlap (Å)
1:B:281:TRP:HB2	1:B:304:LEU:HD21	1.72	0.71
1:B:477:TYR:OH	2:B:500:HEM:O1D	2.08	0.70
1:A:87:CYS:SG	1:B:99:ARG:NH2	2.69	0.65
1:A:69:LYS:HD3	1:A:69:LYS:H	1.60	0.64
1:B:71:PRO:HG2	1:B:84:ASP:HB3	1.79	0.64
1:A:240:ARG:HD3	1:A:298:PRO:HB3	1.79	0.64
2:B:500:HEM:HMC2	2:B:500:HEM:HBC2	1.78	0.64
1:B:130:ARG:NH2	1:B:156:GLU:OE1	2.31	0.64
1:A:240:ARG:NH2	8:A:2080:HOH:O	2.33	0.62
2:A:500:HEM:HBB2	2:A:500:HEM:HHC	1.81	0.61
1:A:105:LEU:HD22	1:B:465:GLU:HB3	1.83	0.60
2:B:500:HEM:HBB2	2:B:500:HEM:HHC	1.86	0.57
1:A:281:TRP:HB2	1:A:304:LEU:HD21	1.86	0.57
1:B:236:ARG:HD3	1:B:351:SER:HB3	1.88	0.55
1:A:68:PRO:O	1:B:109:ARG:NH2	2.40	0.54
1:B:154:GLU:OE1	1:B:168:ARG:NH1	2.39	0.52
1:B:100:ARG:HG2	1:B:102:LEU:HD13	1.98	0.46
1:A:370:CYS:SG	1:A:378:LEU:HD13	2.55	0.45
1:A:126:LEU:HD12	1:A:126:LEU:HA	1.74	0.45
1:A:465:GLU:HB3	1:B:105:LEU:HD22	1.99	0.45
1:B:167:LEU:HG	1:B:348:LEU:HD12	1.98	0.44
1:A:240:ARG:HD3	1:A:298:PRO:CB	2.47	0.44
1:A:449:TRP:HA	3:A:600:H4B:N1	2.33	0.44
1:B:236:ARG:HD2	1:B:242:ASP:OD1	2.19	0.43
1:A:95:PRO:HG3	1:A:108:PRO:HG2	2.02	0.42
1:A:102:LEU:HD11	1:B:71:PRO:HB3	2.02	0.41
1:A:423:HIS:HB2	1:B:392:THR:HB	2.02	0.41
1:B:247:ASN:OD1	1:B:247:ASN:N	2.54	0.41
1:B:175:GLY:HA3	1:B:345:ILE:HD13	2.02	0.41

Continued on next page...

Continued from previous page...

Atom-1	Atom-2	Interatomic distance (Å)	Clash overlap (Å)
1:A:451:VAL:HA	1:A:452:PRO:HD3	1.91	0.40
1:B:370:CYS:SG	1:B:378:LEU:HD13	2.61	0.40
1:A:275:LEU:HD23	1:A:275:LEU:HA	1.92	0.40
1:B:319:HIS:CG	1:B:320:PRO:HD2	2.56	0.40

There are no symmetry-related clashes.

5.3 Torsion angles [i](#)

5.3.1 Protein backbone [i](#)

In the following table, the Percentiles column shows the percent Ramachandran outliers of the chain as a percentile score with respect to all X-ray entries followed by that with respect to entries of similar resolution.

The Analysed column shows the number of residues for which the backbone conformation was analysed, and the total number of residues.

Mol	Chain	Analysed	Favoured	Allowed	Outliers	Percentiles	
1	A	401/443 (90%)	391 (98%)	9 (2%)	1 (0%)	44	49
1	B	398/443 (90%)	389 (98%)	9 (2%)	0	100	100
All	All	799/886 (90%)	780 (98%)	18 (2%)	1 (0%)	48	55

All (1) Ramachandran outliers are listed below:

Mol	Chain	Res	Type
1	A	122	ALA

5.3.2 Protein sidechains [i](#)

In the following table, the Percentiles column shows the percent sidechain outliers of the chain as a percentile score with respect to all X-ray entries followed by that with respect to entries of similar resolution.

The Analysed column shows the number of residues for which the sidechain conformation was analysed, and the total number of residues.

Mol	Chain	Analysed	Rotameric	Outliers	Percentiles	
1	A	344/375 (92%)	335 (97%)	9 (3%)	41	47

Continued on next page...

Continued from previous page...

Mol	Chain	Analysed	Rotameric	Outliers	Percentiles	
1	B	342/375 (91%)	332 (97%)	10 (3%)	37	43
All	All	686/750 (92%)	667 (97%)	19 (3%)	38	44

All (19) residues with a non-rotameric sidechain are listed below:

Mol	Chain	Res	Type
1	A	69	LYS
1	A	100	ARG
1	A	102	LEU
1	A	105	LEU
1	A	125	LEU
1	A	293	LEU
1	A	294	LEU
1	A	328	LEU
1	A	416	LYS
1	B	69	LYS
1	B	100	ARG
1	B	105	LEU
1	B	123	GLU
1	B	149	GLU
1	B	156	GLU
1	B	194	LYS
1	B	247	ASN
1	B	330	LEU
1	B	389	THR

Sometimes sidechains can be flipped to improve hydrogen bonding and reduce clashes. There are no such sidechains identified.

5.3.3 RNA [i](#)

There are no RNA molecules in this entry.

5.4 Non-standard residues in protein, DNA, RNA chains [i](#)

2 non-standard protein/DNA/RNA residues are modelled in this entry.

In the following table, the Counts columns list the number of bonds (or angles) for which Mogul statistics could be retrieved, the number of bonds (or angles) that are observed in the model and the number of bonds (or angles) that are defined in the Chemical Component Dictionary. The Link column lists molecule types, if any, to which the group is linked. The Z score for a bond

length (or angle) is the number of standard deviations the observed value is removed from the expected value. A bond length (or angle) with $|Z| > 2$ is considered an outlier worth inspection. RMSZ is the root-mean-square of all Z scores of the bond lengths (or angles).

Mol	Type	Chain	Res	Link	Bond lengths			Bond angles		
					Counts	RMSZ	$\# Z > 2$	Counts	RMSZ	$\# Z > 2$
1	CAS	A	384	1	5,8,9	1.02	0	1,9,11	0.34	0
1	CAS	B	384	1	5,8,9	0.98	0	1,9,11	0.40	0

In the following table, the Chirals column lists the number of chiral outliers, the number of chiral centers analysed, the number of these observed in the model and the number defined in the Chemical Component Dictionary. Similar counts are reported in the Torsion and Rings columns. '-' means no outliers of that kind were identified.

Mol	Type	Chain	Res	Link	Chirals	Torsions	Rings
1	CAS	A	384	1	-	0/0/7/9	-
1	CAS	B	384	1	-	0/0/7/9	-

There are no bond length outliers.

There are no bond angle outliers.

There are no chirality outliers.

There are no torsion outliers.

There are no ring outliers.

No monomer is involved in short contacts.

5.5 Carbohydrates [i](#)

There are no oligosaccharides in this entry.

5.6 Ligand geometry [i](#)

Of 16 ligands modelled in this entry, 1 is monoatomic - leaving 15 for Mogul analysis.

In the following table, the Counts columns list the number of bonds (or angles) for which Mogul statistics could be retrieved, the number of bonds (or angles) that are observed in the model and the number of bonds (or angles) that are defined in the Chemical Component Dictionary. The Link column lists molecule types, if any, to which the group is linked. The Z score for a bond length (or angle) is the number of standard deviations the observed value is removed from the expected value. A bond length (or angle) with $|Z| > 2$ is considered an outlier worth inspection. RMSZ is the root-mean-square of all Z scores of the bond lengths (or angles).

Mol	Type	Chain	Res	Link	Bond lengths			Bond angles		
					Counts	RMSZ	# Z > 2	Counts	RMSZ	# Z > 2
4	4V4	A	800[B]	-	23,23,23	0.52	0	30,30,30	1.59	5 (16%)
4	4V4	B	800[B]	-	23,23,23	0.44	0	30,30,30	1.51	4 (13%)
4	4V4	B	800[A]	-	23,23,23	0.46	0	30,30,30	1.55	4 (13%)
5	ACT	A	861	-	3,3,3	0.84	0	3,3,3	0.62	0
4	4V4	A	800[A]	-	23,23,23	0.50	0	30,30,30	1.56	5 (16%)
3	H4B	A	600	-	16,18,18	0.90	0	11,26,26	2.78	6 (54%)
2	HEM	B	500	1	41,50,50	1.96	7 (17%)	45,82,82	1.84	8 (17%)
2	HEM	A	500	1	41,50,50	1.84	6 (14%)	45,82,82	1.56	9 (20%)
5	ACT	B	860	-	3,3,3	0.81	0	3,3,3	0.56	0
5	ACT	B	861	-	3,3,3	0.81	0	3,3,3	0.63	0
6	GOL	A	880	-	5,5,5	0.35	0	5,5,5	0.38	0
3	H4B	B	600	-	16,18,18	0.82	0	11,26,26	2.50	6 (54%)
5	ACT	A	860	-	3,3,3	0.69	0	3,3,3	0.78	0
4	4V4	A	801	-	23,23,23	0.41	0	30,30,30	1.56	8 (26%)
6	GOL	B	880	-	5,5,5	0.36	0	5,5,5	0.39	0

In the following table, the Chirals column lists the number of chiral outliers, the number of chiral centers analysed, the number of these observed in the model and the number defined in the Chemical Component Dictionary. Similar counts are reported in the Torsion and Rings columns. '-' means no outliers of that kind were identified.

Mol	Type	Chain	Res	Link	Chirals	Torsions	Rings
4	4V4	A	800[B]	-	-	6/13/13/13	0/2/2/2
4	4V4	B	800[B]	-	-	5/13/13/13	0/2/2/2
4	4V4	B	800[A]	-	-	4/13/13/13	0/2/2/2
4	4V4	A	800[A]	-	-	4/13/13/13	0/2/2/2
3	H4B	A	600	-	-	0/8/17/17	0/2/2/2
2	HEM	B	500	1	-	2/12/54/54	-
2	HEM	A	500	1	-	4/12/54/54	-
6	GOL	A	880	-	-	1/4/4/4	-
3	H4B	B	600	-	-	0/8/17/17	0/2/2/2
4	4V4	A	801	-	-	1/13/13/13	0/2/2/2
6	GOL	B	880	-	-	2/4/4/4	-

All (13) bond length outliers are listed below:

Mol	Chain	Res	Type	Atoms	Z	Observed(Å)	Ideal(Å)
2	B	500	HEM	C3D-C2D	7.71	1.53	1.36
2	A	500	HEM	C3D-C2D	7.22	1.52	1.36

Continued on next page...

Continued from previous page...

Mol	Chain	Res	Type	Atoms	Z	Observed(Å)	Ideal(Å)
2	B	500	HEM	C3C-C2C	-4.51	1.34	1.40
2	A	500	HEM	C3C-C2C	-3.87	1.35	1.40
2	B	500	HEM	C3C-CAC	3.82	1.55	1.47
2	A	500	HEM	C3C-CAC	3.44	1.54	1.47
2	B	500	HEM	CAB-C3B	2.96	1.55	1.47
2	A	500	HEM	FE-ND	2.74	2.10	1.96
2	B	500	HEM	FE-ND	2.73	2.10	1.96
2	A	500	HEM	CAB-C3B	2.46	1.54	1.47
2	A	500	HEM	CAA-C2A	2.30	1.55	1.52
2	B	500	HEM	CMD-C2D	2.26	1.55	1.50
2	B	500	HEM	CMB-C2B	2.12	1.55	1.50

All (55) bond angle outliers are listed below:

Mol	Chain	Res	Type	Atoms	Z	Observed(°)	Ideal(°)
2	B	500	HEM	C4D-ND-C1D	5.49	110.75	105.07
4	A	800[A]	4V4	C02-N01-C06	5.45	122.23	118.10
4	A	800[B]	4V4	C02-N01-C06	5.45	122.23	118.10
2	B	500	HEM	CBA-CAA-C2A	-5.45	103.32	112.62
2	A	500	HEM	C4D-ND-C1D	4.85	110.08	105.07
3	B	600	H4B	C8A-C4A-C4	4.79	118.83	114.57
3	A	600	H4B	C8A-C4A-C4	4.75	118.79	114.57
4	B	800[A]	4V4	C02-N01-C06	4.48	121.50	118.10
4	B	800[B]	4V4	C02-N01-C06	4.48	121.50	118.10
4	A	801	4V4	C02-N01-C06	4.04	121.17	118.10
3	A	600	H4B	C4-C4A-N5	4.00	122.48	119.12
3	A	600	H4B	N1-C2-N3	-3.64	119.72	125.42
2	A	500	HEM	CBA-CAA-C2A	-3.58	106.52	112.62
3	A	600	H4B	C2-N3-C4	3.28	121.14	115.93
3	B	600	H4B	C2-N3-C4	3.23	121.06	115.93
3	B	600	H4B	C4-C4A-N5	3.20	121.80	119.12
4	A	800[A]	4V4	C05-C06-N01	-3.17	119.53	122.90
4	A	800[B]	4V4	C05-C06-N01	-3.17	119.53	122.90
4	B	800[A]	4V4	C21-N20-C19	3.15	121.05	111.95
3	A	600	H4B	C2-N1-C8A	3.11	121.52	114.54
4	B	800[A]	4V4	C05-C06-N01	-3.11	119.61	122.90
4	B	800[B]	4V4	C05-C06-N01	-3.11	119.61	122.90
3	B	600	H4B	N1-C2-N3	-3.06	120.62	125.42
2	B	500	HEM	C4B-CHC-C1C	3.03	126.56	122.56
4	A	801	4V4	C08-C06-N01	2.97	120.37	115.95
2	B	500	HEM	C3B-C2B-C1B	2.94	108.67	106.49
4	A	800[B]	4V4	C21-N20-C19	2.92	120.39	111.95

Continued on next page...

Continued from previous page...

Mol	Chain	Res	Type	Atoms	Z	Observed(°)	Ideal(°)
2	B	500	HEM	C4C-CHD-C1D	2.66	126.06	122.56
4	A	800[A]	4V4	C21-N20-C19	2.65	119.62	111.95
4	B	800[A]	4V4	C08-C06-N01	2.63	119.87	115.95
4	B	800[B]	4V4	C08-C06-N01	2.63	119.87	115.95
4	B	800[B]	4V4	C21-N20-C19	2.58	119.41	111.95
4	A	801	4V4	C21-N20-C19	2.54	119.29	111.95
2	A	500	HEM	CMC-C2C-C3C	2.52	129.39	124.68
2	B	500	HEM	C1B-NB-C4B	2.49	107.65	105.07
2	A	500	HEM	CHB-C1B-NB	2.39	127.34	124.38
4	A	801	4V4	C19-C18-N17	-2.39	103.66	112.31
3	B	600	H4B	C2-N1-C8A	2.38	119.87	114.54
2	A	500	HEM	C4C-CHD-C1D	2.38	125.70	122.56
4	A	801	4V4	C05-C06-N01	-2.33	120.43	122.90
4	A	801	4V4	C09-C08-C06	-2.24	107.96	112.99
4	A	800[B]	4V4	C19-C18-N17	-2.24	104.20	112.31
2	A	500	HEM	C3B-C2B-C1B	2.19	108.11	106.49
4	A	801	4V4	N02-C02-N01	2.17	119.92	116.49
3	A	600	H4B	N2-C2-N3	2.15	120.60	117.25
4	A	800[A]	4V4	C08-C06-N01	2.14	119.14	115.95
4	A	800[B]	4V4	C08-C06-N01	2.14	119.14	115.95
2	B	500	HEM	CMC-C2C-C3C	2.10	128.62	124.68
2	B	500	HEM	CHD-C1D-ND	2.09	126.71	124.43
3	B	600	H4B	N2-C2-N1	2.09	120.51	117.25
4	A	800[A]	4V4	C19-C18-N17	-2.06	104.83	112.31
2	A	500	HEM	CHA-C4D-ND	2.04	126.91	124.38
2	A	500	HEM	CMD-C2D-C1D	2.04	128.15	125.04
4	A	801	4V4	C17-N17-C18	2.04	120.98	115.42
2	A	500	HEM	C4B-CHC-C1C	2.03	125.24	122.56

There are no chirality outliers.

All (29) torsion outliers are listed below:

Mol	Chain	Res	Type	Atoms
4	A	800[B]	4V4	C14-C15-N17-C17
4	A	800[B]	4V4	C16-C15-N17-C17
4	B	800[B]	4V4	C14-C15-N17-C17
4	B	800[B]	4V4	C16-C15-N17-C17
6	B	880	GOL	C1-C2-C3-O3
4	B	800[A]	4V4	N17-C18-C19-N20
4	B	800[A]	4V4	C18-C19-N20-C21
4	A	800[A]	4V4	N17-C18-C19-N20
4	B	800[B]	4V4	C16-C15-N17-C18

Continued on next page...

Continued from previous page...

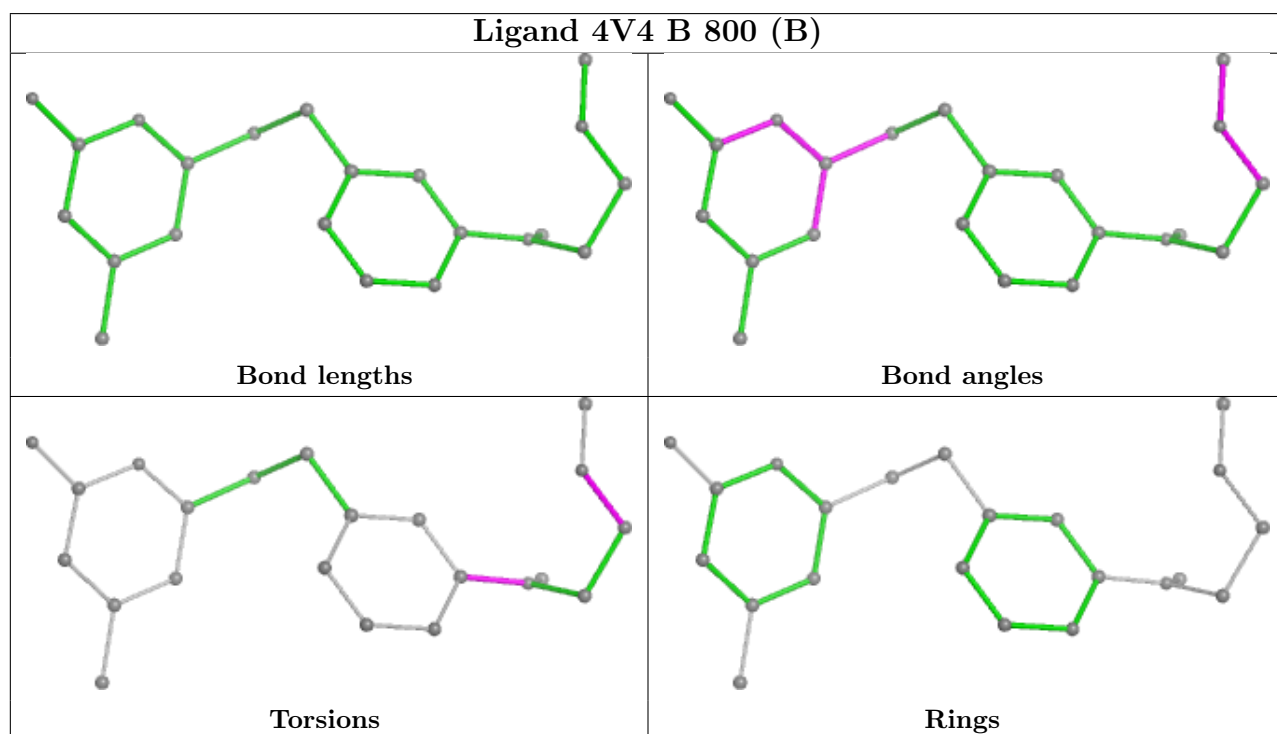
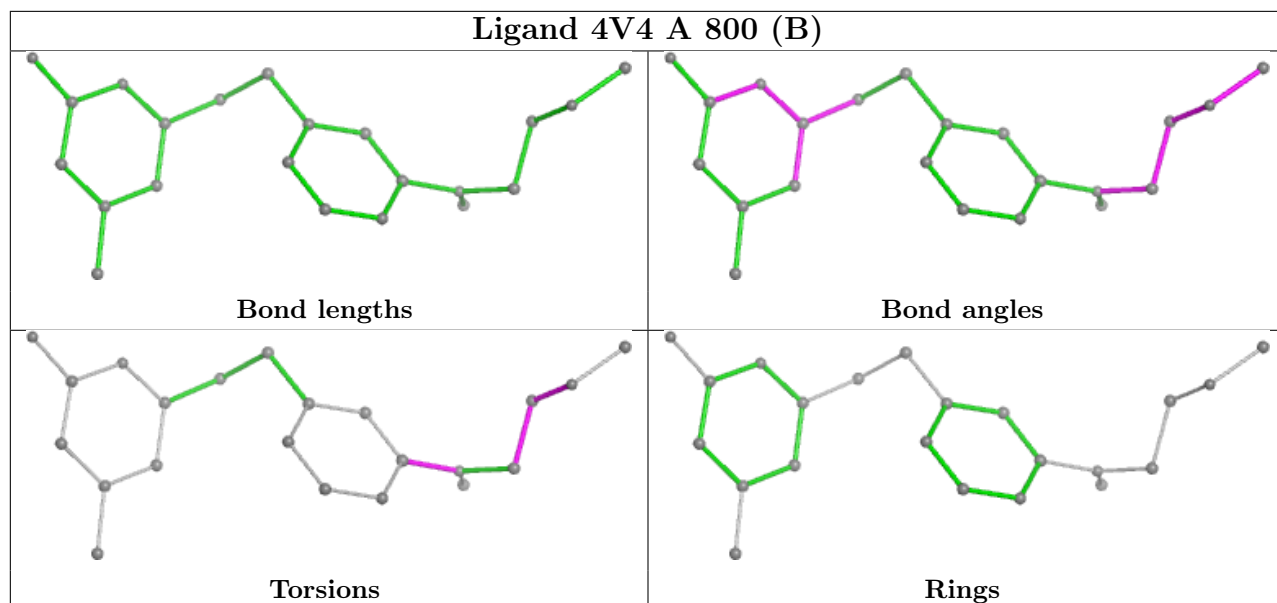
Mol	Chain	Res	Type	Atoms
4	A	800[B]	4V4	C14-C15-N17-C18
4	A	800[B]	4V4	C16-C15-N17-C18
4	B	800[B]	4V4	C14-C15-N17-C18
4	B	800[A]	4V4	C14-C15-N17-C17
4	A	800[B]	4V4	C18-C19-N20-C21
4	B	800[B]	4V4	C18-C19-N20-C21
4	A	800[A]	4V4	C18-C19-N20-C21
4	B	800[A]	4V4	C16-C15-N17-C17
2	A	500	HEM	C2A-CAA-CBA-CGA
6	B	880	GOL	O2-C2-C3-O3
2	A	500	HEM	C4B-C3B-CAB-CBB
2	A	500	HEM	CAD-CBD-CGD-O1D
4	A	800[B]	4V4	N17-C18-C19-N20
4	A	800[A]	4V4	C14-C15-N17-C17
4	A	801	4V4	N17-C18-C19-N20
4	A	800[A]	4V4	C16-C15-N17-C17
2	A	500	HEM	CAD-CBD-CGD-O2D
2	B	500	HEM	CAD-CBD-CGD-O1D
6	A	880	GOL	C1-C2-C3-O3
2	B	500	HEM	CAD-CBD-CGD-O2D

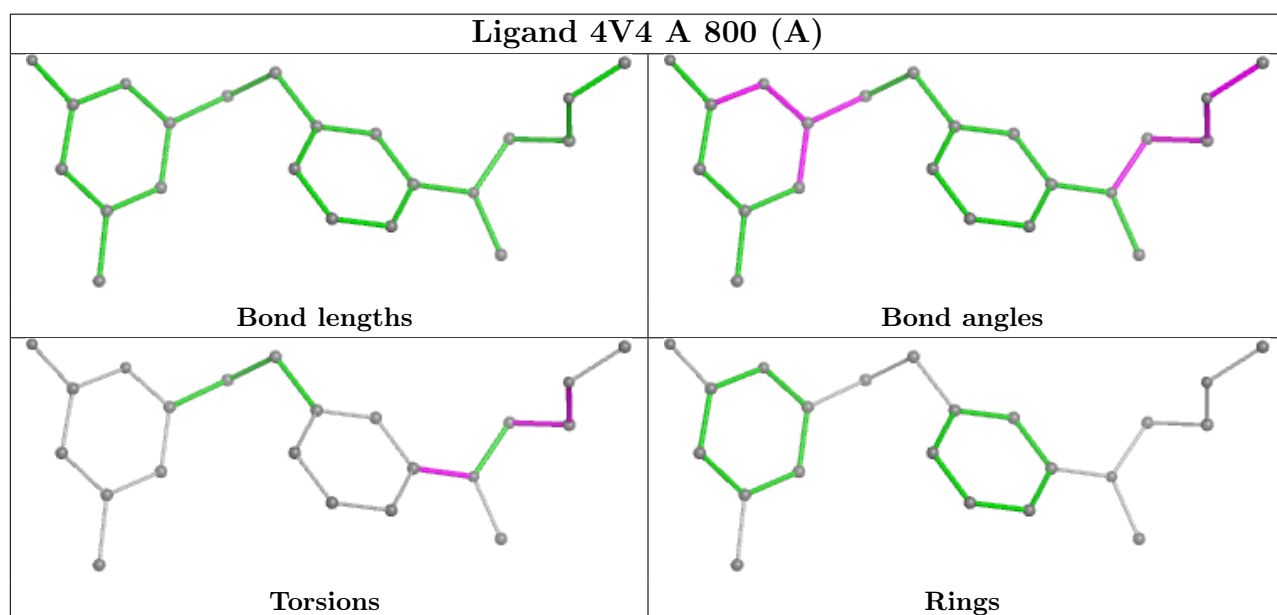
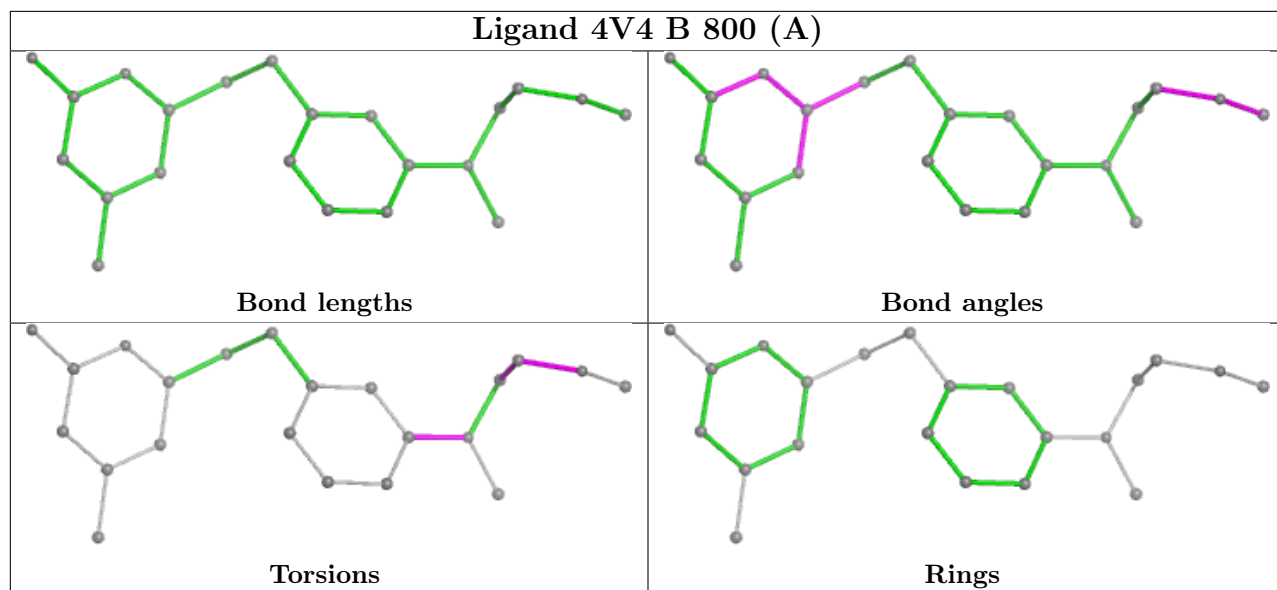
There are no ring outliers.

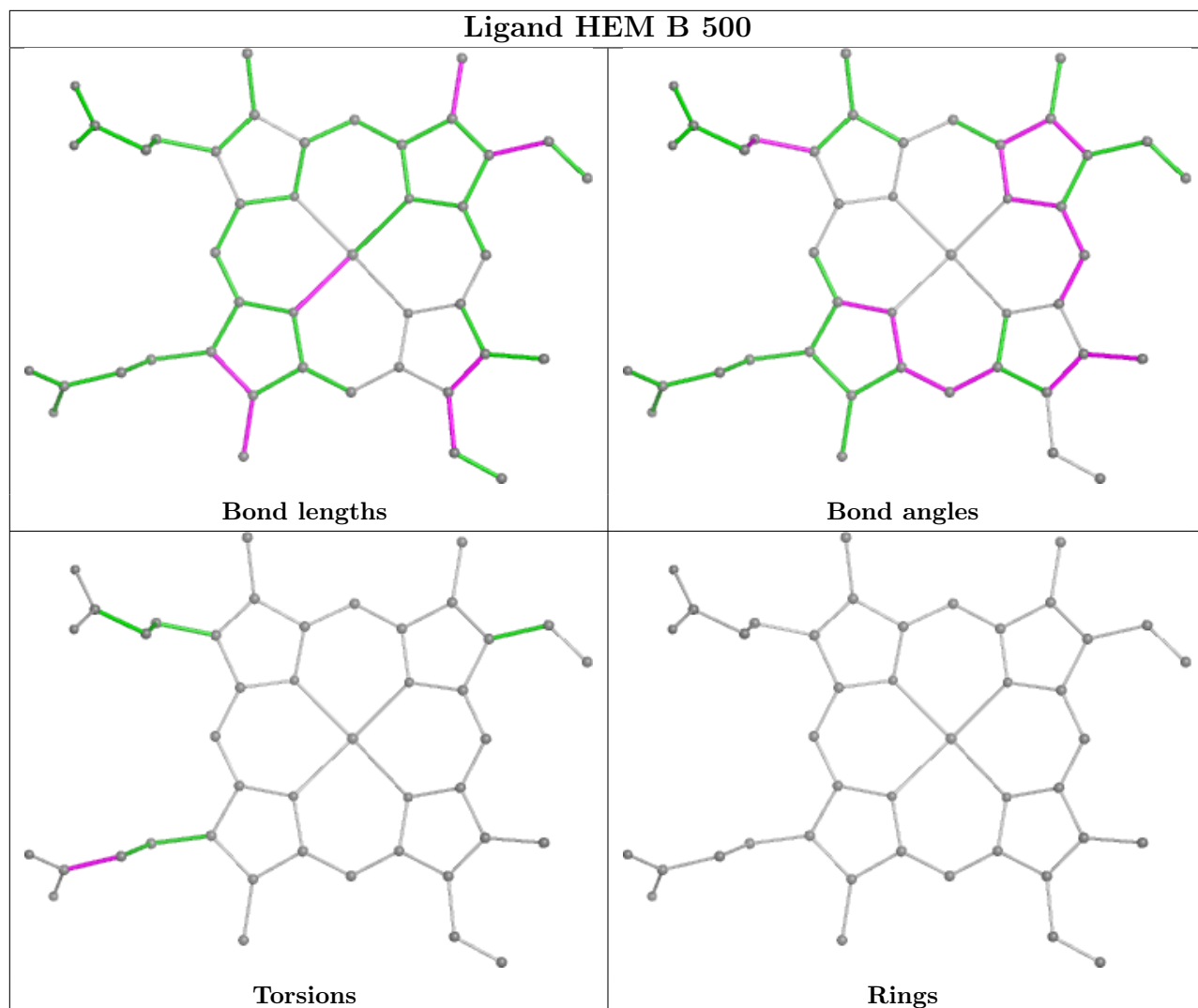
3 monomers are involved in 10 short contacts:

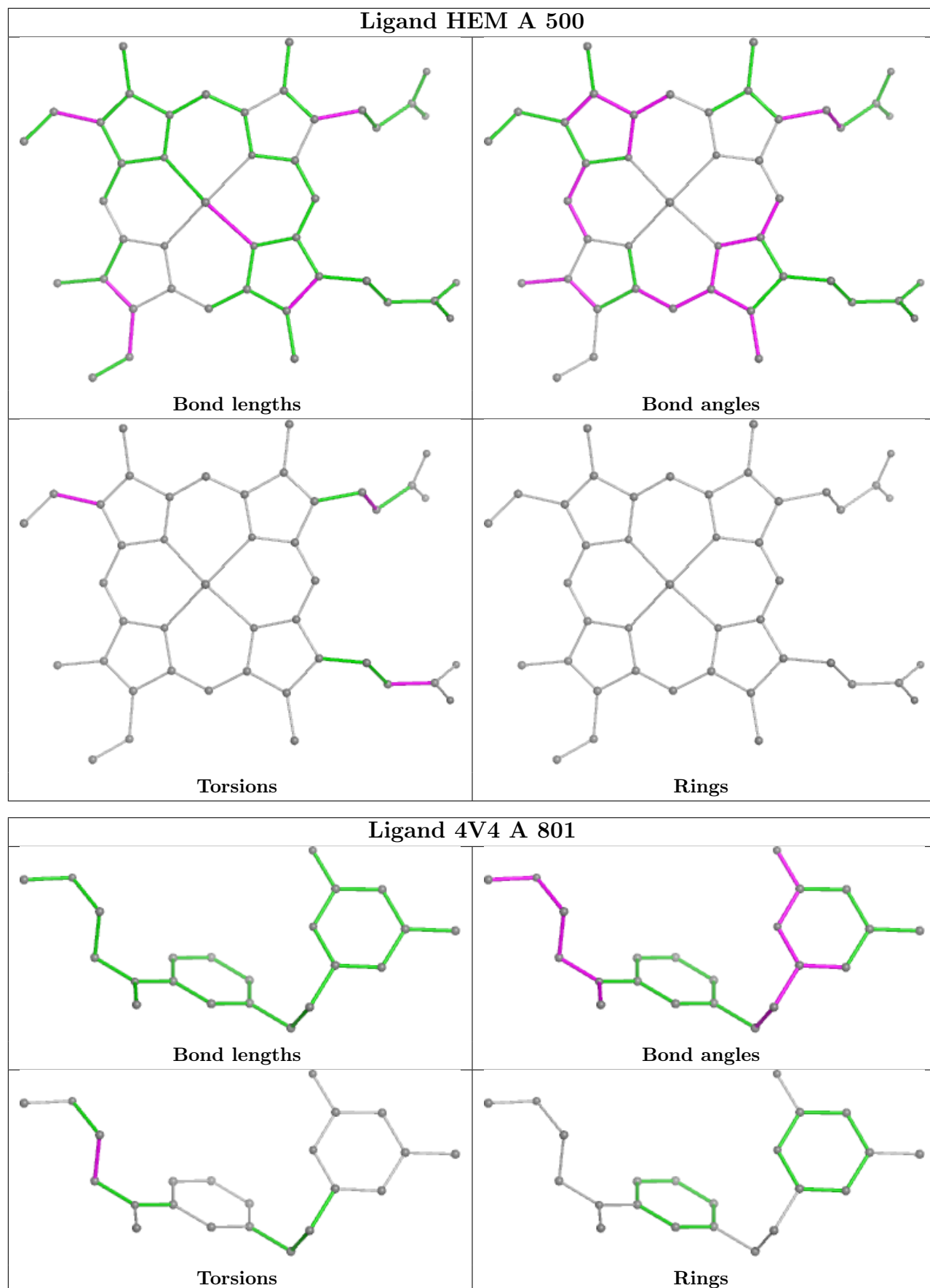
Mol	Chain	Res	Type	Clashes	Symm-Clashes
3	A	600	H4B	1	0
2	B	500	HEM	5	0
2	A	500	HEM	4	0

The following is a two-dimensional graphical depiction of Mogul quality analysis of bond lengths, bond angles, torsion angles, and ring geometry for all instances of the Ligand of Interest. In addition, ligands with molecular weight > 250 and outliers as shown on the validation Tables will also be included. For torsion angles, if less than 5% of the Mogul distribution of torsion angles is within 10 degrees of the torsion angle in question, then that torsion angle is considered an outlier. Any bond that is central to one or more torsion angles identified as an outlier by Mogul will be highlighted in the graph. For rings, the root-mean-square deviation (RMSD) between the ring in question and similar rings identified by Mogul is calculated over all ring torsion angles. If the average RMSD is greater than 60 degrees and the minimal RMSD between the ring in question and any Mogul-identified rings is also greater than 60 degrees, then that ring is considered an outlier. The outliers are highlighted in purple. The color gray indicates Mogul did not find sufficient equivalents in the CSD to analyse the geometry.









5.7 Other polymers [i](#)

There are no such residues in this entry.

5.8 Polymer linkage issues [i](#)

There are no chain breaks in this entry.

6 Fit of model and data [i](#)

6.1 Protein, DNA and RNA chains [i](#)

In the following table, the column labelled ‘#RSRZ> 2’ contains the number (and percentage) of RSRZ outliers, followed by percent RSRZ outliers for the chain as percentile scores relative to all X-ray entries and entries of similar resolution. The OWAB column contains the minimum, median, 95th percentile and maximum values of the occupancy-weighted average B-factor per residue. The column labelled ‘Q< 0.9’ lists the number of (and percentage) of residues with an average occupancy less than 0.9.

Mol	Chain	Analysed	<RSRZ>	#RSRZ>2	OWAB(Å ²)	Q<0.9
1	A	403/443 (90%)	-0.63	2 (0%) 87 89	24, 42, 77, 103	2 (0%)
1	B	402/443 (90%)	-0.55	2 (0%) 87 89	27, 45, 79, 116	0
All	All	805/886 (90%)	-0.59	4 (0%) 87 89	24, 44, 78, 116	2 (0%)

All (4) RSRZ outliers are listed below:

Mol	Chain	Res	Type	RSRZ
1	A	108	PRO	3.3
1	A	121	PRO	3.0
1	B	121	PRO	2.5
1	B	69	LYS	2.4

6.2 Non-standard residues in protein, DNA, RNA chains [i](#)

In the following table, the Atoms column lists the number of modelled atoms in the group and the number defined in the chemical component dictionary. The B-factors column lists the minimum, median, 95th percentile and maximum values of B factors of atoms in the group. The column labelled ‘Q< 0.9’ lists the number of atoms with occupancy less than 0.9.

Mol	Type	Chain	Res	Atoms	RSCC	RSR	B-factors(Å ²)	Q<0.9
1	CAS	B	384	9/10	0.96	0.08	45,56,70,85	0
1	CAS	A	384	9/10	0.98	0.06	33,35,51,62	0

6.3 Carbohydrates [i](#)

There are no monosaccharides in this entry.

6.4 Ligands

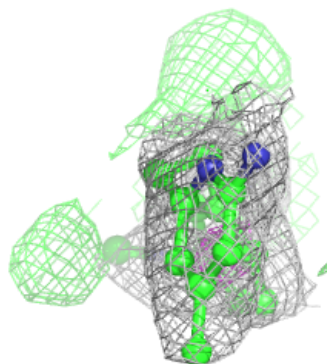
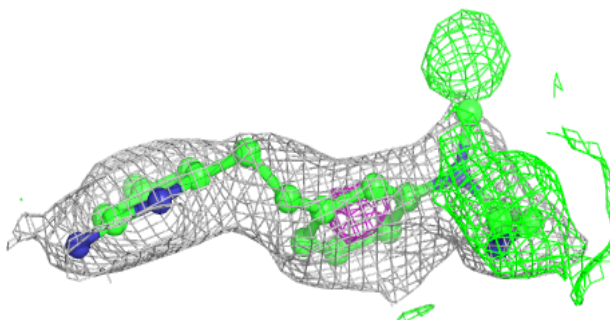
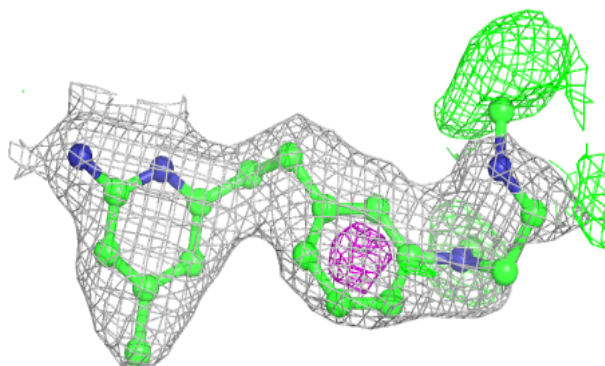
In the following table, the Atoms column lists the number of modelled atoms in the group and the number defined in the chemical component dictionary. The B-factors column lists the minimum, median, 95th percentile and maximum values of B factors of atoms in the group. The column labelled 'Q< 0.9' lists the number of atoms with occupancy less than 0.9.

Mol	Type	Chain	Res	Atoms	RSCC	RSR	B-factors(Å ²)	Q<0.9
6	GOL	A	880	6/6	0.85	0.16	71,73,78,82	0
4	4V4	B	800[B]	22/22	0.86	0.14	39,48,62,62	6
4	4V4	B	800[A]	22/22	0.86	0.14	39,48,62,65	6
6	GOL	B	880	6/6	0.87	0.13	56,61,64,67	0
4	4V4	A	801	22/22	0.89	0.10	41,63,72,74	0
4	4V4	A	800[B]	22/22	0.90	0.12	27,50,67,68	6
4	4V4	A	800[A]	22/22	0.90	0.12	27,50,67,68	6
5	ACT	A	860	4/4	0.91	0.09	28,37,40,44	0
5	ACT	B	861	4/4	0.92	0.11	37,39,41,43	0
5	ACT	B	860	4/4	0.95	0.10	46,46,47,57	0
3	H4B	A	600	17/17	0.95	0.06	33,37,42,43	0
3	H4B	B	600	17/17	0.95	0.06	27,33,39,39	0
5	ACT	A	861	4/4	0.95	0.07	39,40,41,43	0
2	HEM	B	500	43/43	0.98	0.06	21,35,51,54	0
2	HEM	A	500	43/43	0.98	0.06	21,27,57,67	0
7	ZN	A	900	1/1	0.99	0.08	58,58,58,58	0

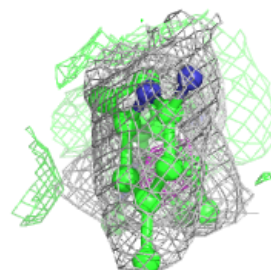
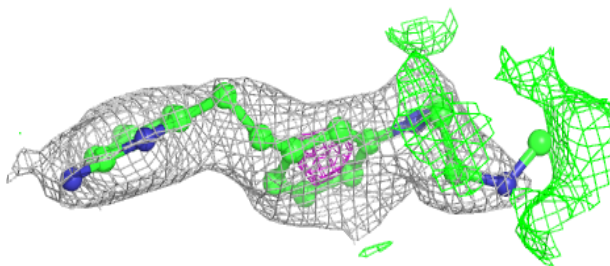
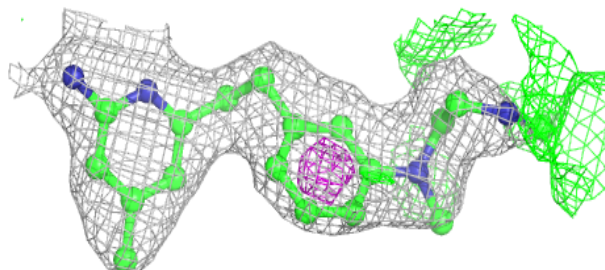
The following is a graphical depiction of the model fit to experimental electron density of all instances of the Ligand of Interest. In addition, ligands with molecular weight > 250 and outliers as shown on the geometry validation Tables will also be included. Each fit is shown from different orientation to approximate a three-dimensional view.

Electron density around 4V4 B 800 (B):

$2mF_o-DF_c$ (at 0.7 rmsd) in gray
 mF_o-DF_c (at 3 rmsd) in purple (negative)
and green (positive)

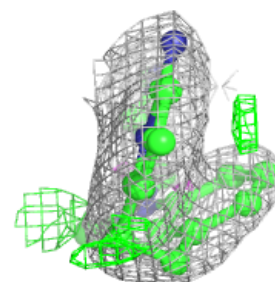
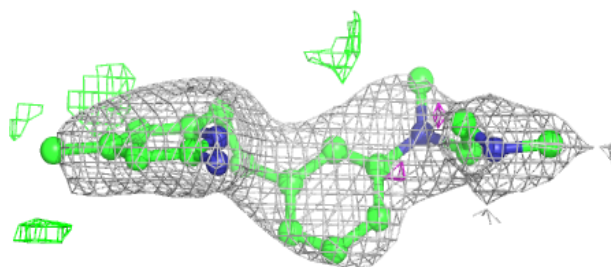
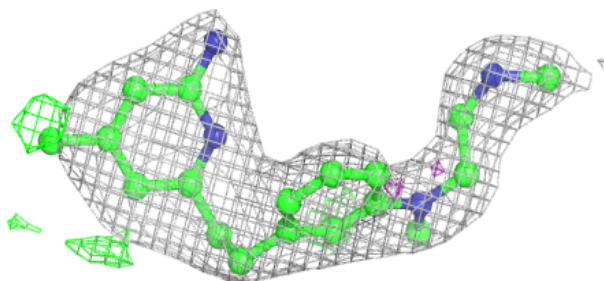
**Electron density around 4V4 B 800 (A):**

$2mF_o-DF_c$ (at 0.7 rmsd) in gray
 mF_o-DF_c (at 3 rmsd) in purple (negative)
and green (positive)

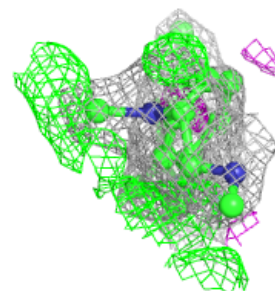
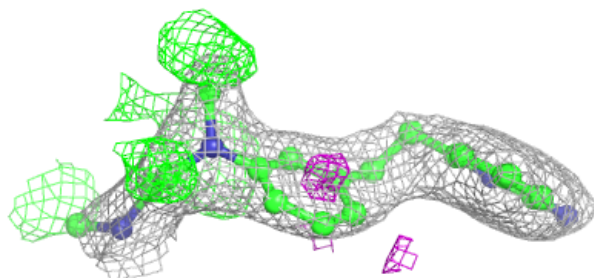
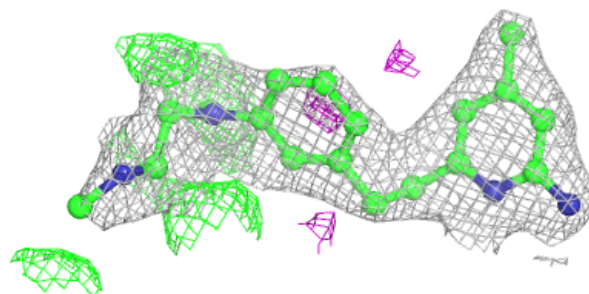


Electron density around 4V4 A 801:

$2mF_o-DF_c$ (at 0.7 rmsd) in gray
 mF_o-DF_c (at 3 rmsd) in purple (negative)
and green (positive)

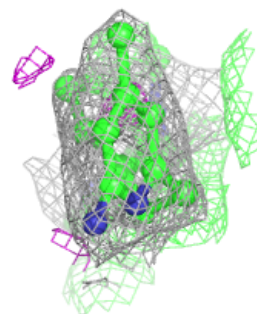
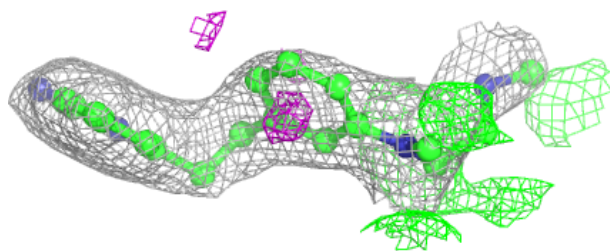
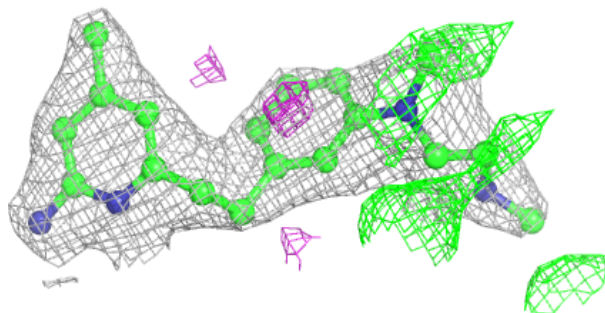
**Electron density around 4V4 A 800 (B):**

$2mF_o-DF_c$ (at 0.7 rmsd) in gray
 mF_o-DF_c (at 3 rmsd) in purple (negative)
and green (positive)



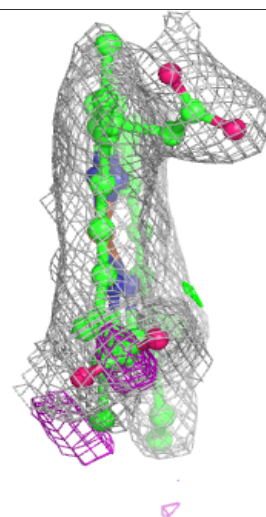
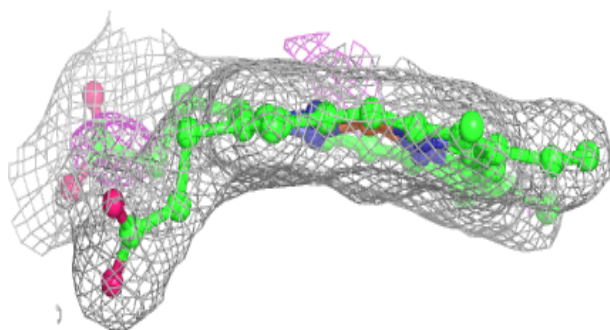
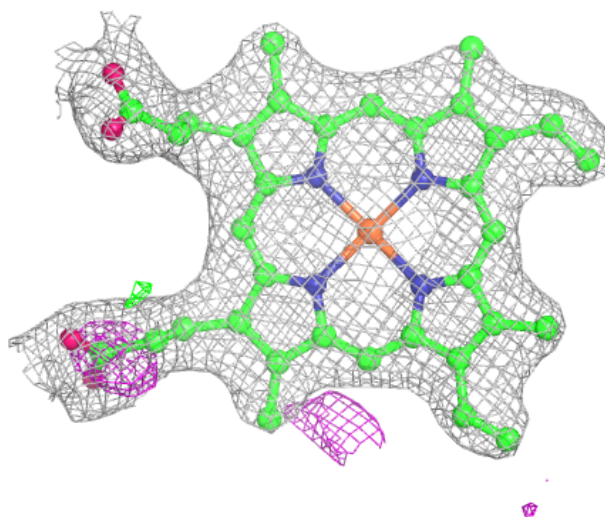
Electron density around 4V4 A 800 (A):

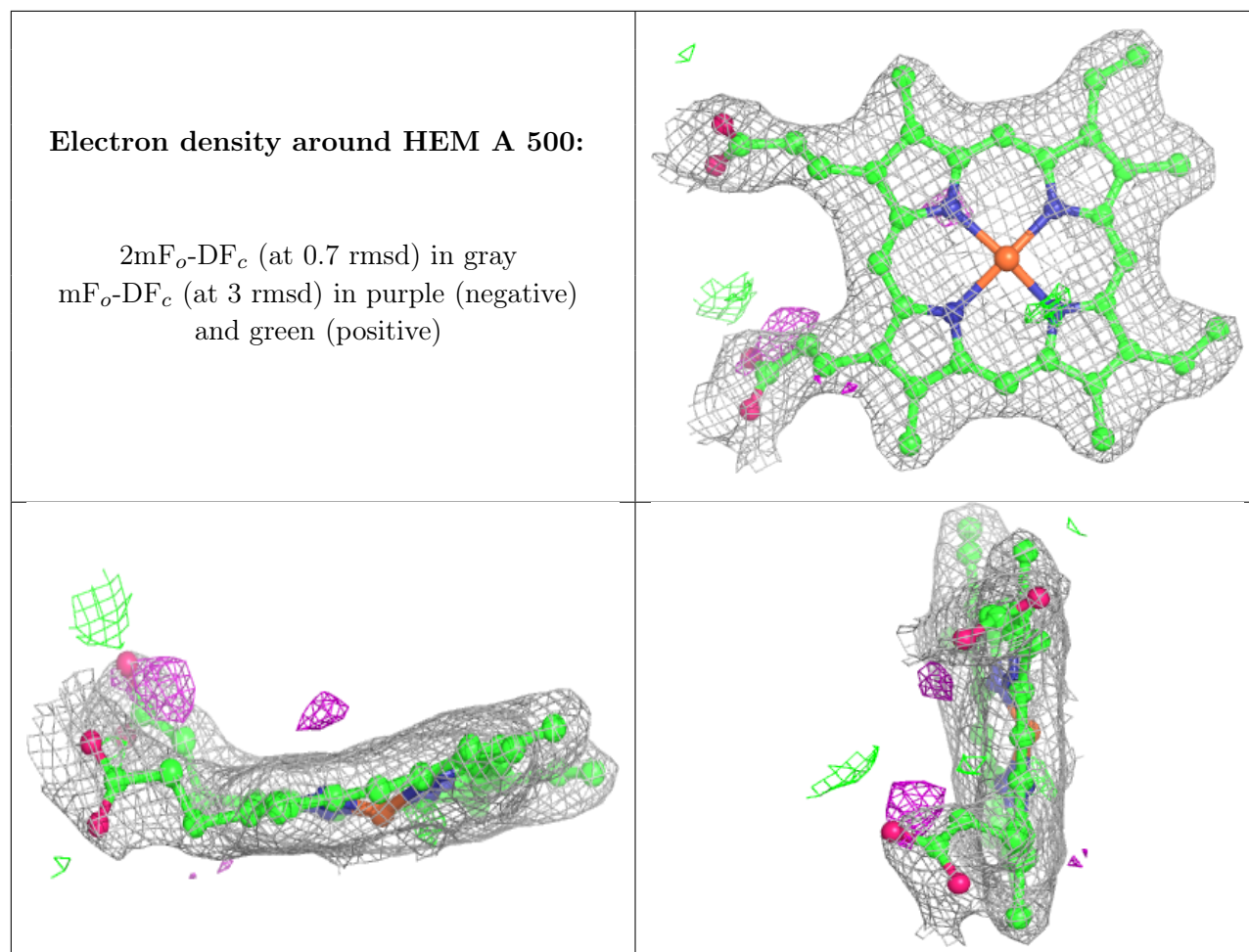
$2mF_o-DF_c$ (at 0.7 rmsd) in gray
 mF_o-DF_c (at 3 rmsd) in purple (negative)
and green (positive)



Electron density around HEM B 500:

$2mF_o-DF_c$ (at 0.7 rmsd) in gray
 mF_o-DF_c (at 3 rmsd) in purple (negative)
and green (positive)





6.5 Other polymers [i](#)

There are no such residues in this entry.