



# Full wwPDB X-ray Structure Validation Report ⓘ

Nov 17, 2024 – 04:26 PM EST

PDB ID : 4QO5  
Title : Hypothetical multiheme protein  
Authors : Rajendran, C.  
Deposited on : 2014-06-19  
Resolution : 1.70 Å(reported)

This is a Full wwPDB X-ray Structure Validation Report for a publicly released PDB entry.

We welcome your comments at [validation@mail.wwpdb.org](mailto:validation@mail.wwpdb.org)

A user guide is available at

<https://www.wwpdb.org/validation/2017/XrayValidationReportHelp>

with specific help available everywhere you see the ⓘ symbol.

The types of validation reports are described at

<http://www.wwpdb.org/validation/2017/FAQs#types>.

---

The following versions of software and data (see [references ⓘ](#)) were used in the production of this report:

MolProbity : 4.02b-467  
Mogul : 2022.3.0, CSD as543be (2022)  
Xtriage (Phenix) : 1.20.1  
EDS : 3.0  
buster-report : 1.1.7 (2018)  
Percentile statistics : 20231227.v01 (using entries in the PDB archive December 27th 2023)  
CCP4 : 9.0.003 (Gargrove)  
Density-Fitness : 1.0.11  
Ideal geometry (proteins) : Engh & Huber (2001)  
Ideal geometry (DNA, RNA) : Parkinson et al. (1996)  
Validation Pipeline (wwPDB-VP) : 2.39

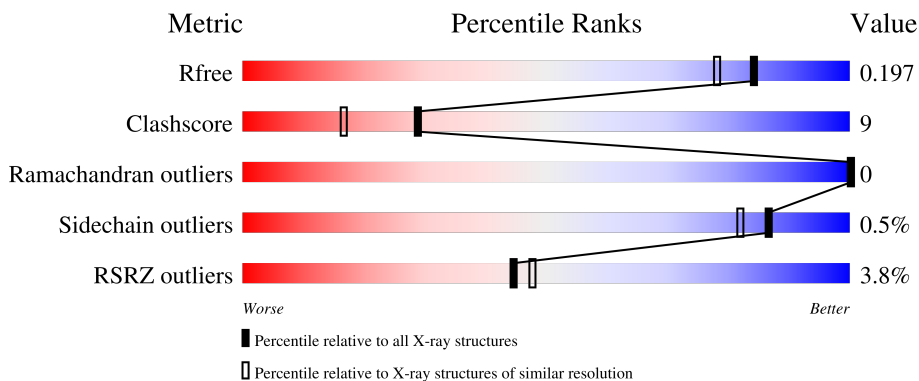
# 1 Overall quality at a glance

The following experimental techniques were used to determine the structure:

*X-RAY DIFFRACTION*

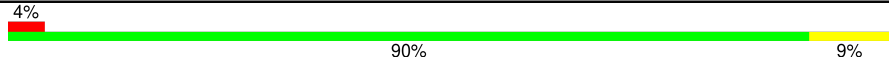
The reported resolution of this entry is 1.70 Å.

Percentile scores (ranging between 0-100) for global validation metrics of the entry are shown in the following graphic. The table shows the number of entries on which the scores are based.



Metric	Whole archive (#Entries)	Similar resolution (#Entries, resolution range(Å))
$R_{free}$	164625	5161 (1.70-1.70)
Clashscore	180529	5671 (1.70-1.70)
Ramachandran outliers	177936	5594 (1.70-1.70)
Sidechain outliers	177891	5594 (1.70-1.70)
RSRZ outliers	164620	5159 (1.70-1.70)

The table below summarises the geometric issues observed across the polymeric chains and their fit to the electron density. The red, orange, yellow and green segments of the lower bar indicate the fraction of residues that contain outliers for  $\geq 3$ , 2, 1 and 0 types of geometric quality criteria respectively. A grey segment represents the fraction of residues that are not modelled. The numeric value for each fraction is indicated below the corresponding segment, with a dot representing fractions  $\leq 5\%$ . The upper red bar (where present) indicates the fraction of residues that have poor fit to the electron density. The numeric value is given above the bar.

Mol	Chain	Length	Quality of chain
1	A	521	

## 2 Entry composition [i](#)

There are 5 unique types of molecules in this entry. The entry contains 4820 atoms, of which 0 are hydrogens and 0 are deuteriums.

In the tables below, the ZeroOcc column contains the number of atoms modelled with zero occupancy, the AltConf column contains the number of residues with at least one atom in alternate conformation and the Trace column contains the number of residues modelled with at most 2 atoms.

- Molecule 1 is a protein called Hypothetical multiheme protein.

Mol	Chain	Residues	Atoms					ZeroOcc	AltConf	Trace
			Total	C	N	O	S			
1	A	521	4054	2579	700	743	32	0	0	0

- Molecule 2 is HEME C (three-letter code: HEC) (formula:  $C_{34}H_{34}FeN_4O_4$ ).



Mol	Chain	Residues	Atoms					ZeroOcc	AltConf
			Total	C	Fe	N	O		
2	A	1	43	34	1	4	4	0	0
2	A	1	43	34	1	4	4	0	0
2	A	1	43	34	1	4	4	0	0
2	A	1	43	34	1	4	4	0	0
2	A	1	43	34	1	4	4	0	0

*Continued on next page...*

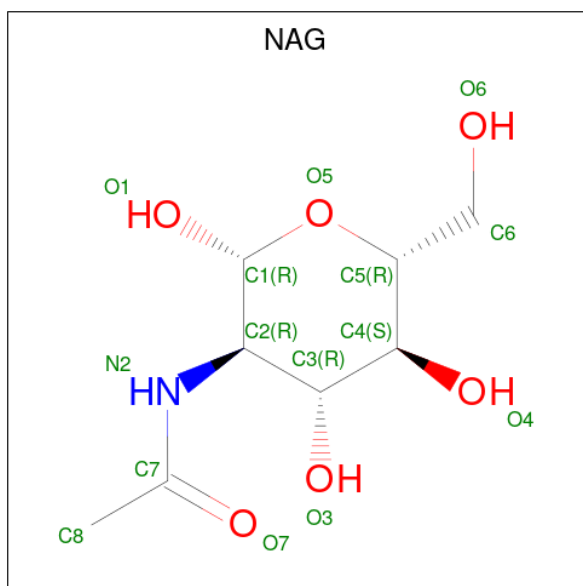
Continued from previous page...

Mol	Chain	Residues	Atoms				ZeroOcc	AltConf	
2	A	1	Total	C	Fe	N	O	0	0
			43	34	1	4	4		
2	A	1	Total	C	Fe	N	O	0	0
			43	34	1	4	4		
2	A	1	Total	C	Fe	N	O	0	0
			43	34	1	4	4		

- Molecule 3 is CALCIUM ION (three-letter code: CA) (formula: Ca).

Mol	Chain	Residues	Atoms		ZeroOcc	AltConf
3	A	1	Total	Ca	0	0
			1	1		

- Molecule 4 is 2-acetamido-2-deoxy-beta-D-glucopyranose (three-letter code: NAG) (formula: C<sub>8</sub>H<sub>15</sub>NO<sub>6</sub>).



Mol	Chain	Residues	Atoms				ZeroOcc	AltConf
4	A	1	Total	C	N	O	0	0
			14	8	1	5		

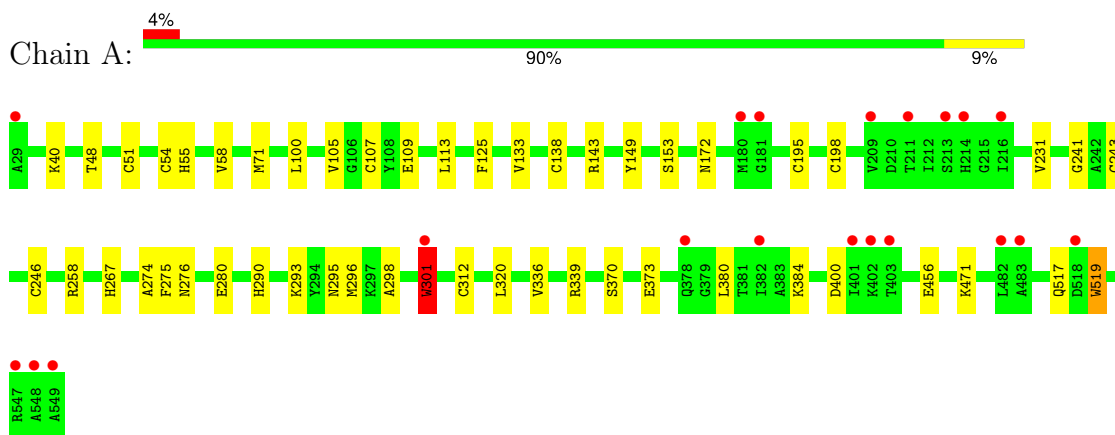
- Molecule 5 is water.

Mol	Chain	Residues	Atoms		ZeroOcc	AltConf
5	A	407	Total	O	0	0
			407	407		

### 3 Residue-property plots [i](#)

These plots are drawn for all protein, RNA, DNA and oligosaccharide chains in the entry. The first graphic for a chain summarises the proportions of the various outlier classes displayed in the second graphic. The second graphic shows the sequence view annotated by issues in geometry and electron density. Residues are color-coded according to the number of geometric quality criteria for which they contain at least one outlier: green = 0, yellow = 1, orange = 2 and red = 3 or more. A red dot above a residue indicates a poor fit to the electron density ( $RSRZ > 2$ ). Stretches of 2 or more consecutive residues without any outlier are shown as a green connector. Residues present in the sample, but not in the model, are shown in grey.

- Molecule 1: Hypothetical multiheme protein



## 4 Data and refinement statistics

Property	Value	Source
Space group	H 3 2	Depositor
Cell constants a, b, c, $\alpha$ , $\beta$ , $\gamma$	136.44Å 136.44Å 214.90Å 90.00° 90.00° 120.00°	Depositor
Resolution (Å)	43.73 – 1.70 43.73 – 1.70	Depositor EDS
% Data completeness (in resolution range)	99.4 (43.73-1.70) 99.4 (43.73-1.70)	Depositor EDS
$R_{merge}$	(Not available)	Depositor
$R_{sym}$	(Not available)	Depositor
$\langle I/\sigma(I) \rangle$ <sup>1</sup>	1.33 (at 1.70Å)	Xtriage
Refinement program	PHENIX (phenix.refine: 1.8.1_1168)	Depositor
R, $R_{free}$	0.165 , 0.201 0.171 , 0.197	Depositor DCC
$R_{free}$ test set	4222 reflections (5.00%)	wwPDB-VP
Wilson B-factor (Å <sup>2</sup> )	21.3	Xtriage
Anisotropy	0.625	Xtriage
Bulk solvent $k_{sol}$ (e/Å <sup>3</sup> ), $B_{sol}$ (Å <sup>2</sup> )	0.34 , 42.2	EDS
L-test for twinning <sup>2</sup>	$\langle  L  \rangle = 0.48$ , $\langle L^2 \rangle = 0.32$	Xtriage
Estimated twinning fraction	No twinning to report.	Xtriage
$F_o, F_c$ correlation	0.97	EDS
Total number of atoms	4820	wwPDB-VP
Average B, all atoms (Å <sup>2</sup> )	30.0	wwPDB-VP

Xtriage's analysis on translational NCS is as follows: *The largest off-origin peak in the Patterson function is 3.57% of the height of the origin peak. No significant pseudotranslation is detected.*

<sup>1</sup>Intensities estimated from amplitudes.

<sup>2</sup>Theoretical values of  $\langle |L| \rangle$ ,  $\langle L^2 \rangle$  for acentric reflections are 0.5, 0.333 respectively for untwinned datasets, and 0.375, 0.2 for perfectly twinned datasets.

## 5 Model quality [i](#)

### 5.1 Standard geometry [i](#)

Bond lengths and bond angles in the following residue types are not validated in this section: CA, NAG, HEC

The Z score for a bond length (or angle) is the number of standard deviations the observed value is removed from the expected value. A bond length (or angle) with  $|Z| > 5$  is considered an outlier worth inspection. RMSZ is the root-mean-square of all Z scores of the bond lengths (or angles).

Mol	Chain	Bond lengths		Bond angles	
		RMSZ	# Z  >5	RMSZ	# Z  >5
1	A	0.45	3/4165 (0.1%)	0.58	1/5678 (0.0%)

All (3) bond length outliers are listed below:

Mol	Chain	Res	Type	Atoms	Z	Observed(Å)	Ideal(Å)
1	A	301	TRP	CZ3-CH2	-7.46	1.28	1.40
1	A	301	TRP	CE3-CZ3	-6.96	1.26	1.38
1	A	301	TRP	CE2-CZ2	-6.82	1.28	1.39

All (1) bond angle outliers are listed below:

Mol	Chain	Res	Type	Atoms	Z	Observed(°)	Ideal(°)
1	A	258	ARG	NE-CZ-NH1	-5.43	117.58	120.30

There are no chirality outliers.

There are no planarity outliers.

### 5.2 Too-close contacts [i](#)

In the following table, the Non-H and H(model) columns list the number of non-hydrogen atoms and hydrogen atoms in the chain respectively. The H(added) column lists the number of hydrogen atoms added and optimized by MolProbity. The Clashes column lists the number of clashes within the asymmetric unit, whereas Symm-Clashes lists symmetry-related clashes.

Mol	Chain	Non-H	H(model)	H(added)	Clashes	Symm-Clashes
1	A	4054	0	3978	46	0
2	A	344	0	256	28	0
3	A	1	0	0	0	0
4	A	14	0	13	1	0

*Continued on next page...*

*Continued from previous page...*

Mol	Chain	Non-H	H(model)	H(added)	Clashes	Symm-Clashes
5	A	407	0	0	3	0
All	All	4820	0	4247	58	0

The all-atom clashscore is defined as the number of clashes found per 1000 atoms (including hydrogen atoms). The all-atom clashscore for this structure is 9.

All (58) close contacts within the same asymmetric unit are listed below, sorted by their clash magnitude.

Atom-1	Atom-2	Interatomic distance (Å)	Clash overlap (Å)
1:A:301:TRP:HA	1:A:301:TRP:CE3	2.16	0.81
1:A:295:ASN:O	1:A:301:TRP:CH2	2.36	0.79
1:A:296:MET:HA	1:A:301:TRP:CZ2	2.27	0.70
1:A:54:CYS:SG	2:A:601:HEC:HAC	2.33	0.69
1:A:296:MET:HA	1:A:301:TRP:HZ2	1.59	0.66
1:A:370:SER:OG	1:A:400:ASP:OD1	2.18	0.61
1:A:133:VAL:HB	2:A:602:HEC:HMD3	1.83	0.60
1:A:274:ALA:HB3	2:A:607:HEC:HMB2	1.85	0.58
1:A:125:PHE:CD1	2:A:601:HEC:HBC2	2.39	0.57
1:A:301:TRP:HA	1:A:301:TRP:HE3	1.64	0.57
1:A:290:HIS:O	1:A:293:LYS:HG2	2.04	0.56
1:A:298:ALA:N	1:A:301:TRP:HZ3	2.04	0.56
2:A:606:HEC:CGA	2:A:606:HEC:HHA	2.36	0.55
1:A:295:ASN:O	1:A:301:TRP:CZ2	2.58	0.55
1:A:296:MET:C	1:A:301:TRP:CH2	2.80	0.55
1:A:380:LEU:HD21	1:A:471:LYS:HG2	1.89	0.54
1:A:296:MET:C	1:A:301:TRP:HH2	2.12	0.53
2:A:607:HEC:HAC	2:A:608:HEC:HBB2	1.92	0.52
1:A:109:GLU:O	1:A:113:LEU:HG	2.10	0.51
2:A:601:HEC:HBB3	2:A:601:HEC:HMB1	1.93	0.51
1:A:298:ALA:HB3	1:A:301:TRP:CZ3	2.46	0.50
1:A:456:GLU:OE1	5:A:1043:HOH:O	2.19	0.50
1:A:107:CYS:SG	2:A:602:HEC:HAB	2.49	0.50
1:A:312:CYS:SG	2:A:607:HEC:HAB	2.47	0.50
1:A:339:ARG:HD3	5:A:797:HOH:O	2.12	0.50
2:A:602:HEC:HAC	2:A:603:HEC:HBB2	1.94	0.50
1:A:55:HIS:HA	1:A:58:VAL:HG22	1.95	0.49
1:A:153:SER:HB2	2:A:606:HEC:O1A	2.13	0.48
1:A:336:VAL:HG23	2:A:606:HEC:HBA2	1.93	0.48
2:A:604:HEC:HMB1	2:A:604:HEC:HBB3	1.96	0.48
1:A:276:ASN:HB3	1:A:519:TRP:CH2	2.49	0.47
1:A:246:CYS:SG	2:A:605:HEC:HAC	2.49	0.47

*Continued on next page...*



Continued from previous page...

Atom-1	Atom-2	Interatomic distance (Å)	Clash overlap (Å)
2:A:606:HEC:HMB1	2:A:606:HEC:HBB3	1.97	0.47
1:A:149:TYR:CE1	2:A:605:HEC:HMC2	2.50	0.46
1:A:100:LEU:HD11	1:A:113:LEU:HD21	1.97	0.46
1:A:275:PHE:HA	2:A:607:HEC:CBB	2.45	0.46
2:A:608:HEC:HMB1	2:A:608:HEC:HBB3	1.97	0.46
1:A:298:ALA:HB3	1:A:301:TRP:HZ3	1.80	0.45
2:A:601:HEC:HMC1	2:A:601:HEC:HBC3	1.98	0.45
1:A:71:MET:HB3	1:A:105:VAL:HB	2.00	0.44
1:A:143:ARG:HD3	5:A:1082:HOH:O	2.17	0.44
2:A:602:HEC:HMB1	2:A:602:HEC:HBB3	1.99	0.43
1:A:231:VAL:O	1:A:241:GLY:HA2	2.18	0.43
1:A:195:CYS:SG	2:A:604:HEC:HAB	2.58	0.43
2:A:603:HEC:HMB1	2:A:603:HEC:HBB3	2.00	0.43
2:A:607:HEC:HAC	2:A:608:HEC:CBB	2.49	0.43
1:A:373:GLU:OE1	1:A:384:LYS:NZ	2.46	0.42
1:A:280:GLU:CD	1:A:517:GLN:H	2.23	0.42
1:A:138:CYS:SG	2:A:603:HEC:CBB	3.08	0.42
1:A:172:ASN:ND2	4:A:610:NAG:C1	2.82	0.42
1:A:298:ALA:N	1:A:301:TRP:CZ3	2.85	0.42
2:A:605:HEC:HAB	2:A:605:HEC:HHC	1.77	0.41
1:A:48:THR:HA	1:A:51:CYS:SG	2.61	0.41
1:A:301:TRP:HB3	1:A:320:LEU:HD23	2.03	0.41
1:A:198:CYS:SG	2:A:604:HEC:HAC	2.57	0.41
1:A:40:LYS:HD2	1:A:40:LYS:HA	1.95	0.40
1:A:267:HIS:CE1	2:A:604:HEC:HMD1	2.56	0.40
1:A:243:CYS:SG	2:A:605:HEC:CBB	3.09	0.40

There are no symmetry-related clashes.

## 5.3 Torsion angles [\(i\)](#)

### 5.3.1 Protein backbone [\(i\)](#)

In the following table, the Percentiles column shows the percent Ramachandran outliers of the chain as a percentile score with respect to all X-ray entries followed by that with respect to entries of similar resolution.

The Analysed column shows the number of residues for which the backbone conformation was analysed, and the total number of residues.

Mol	Chain	Analysed	Favoured	Allowed	Outliers	Percentiles	
1	A	519/521 (100%)	503 (97%)	16 (3%)	0	100	100

There are no Ramachandran outliers to report.

### 5.3.2 Protein sidechains [i](#)

In the following table, the Percentiles column shows the percent sidechain outliers of the chain as a percentile score with respect to all X-ray entries followed by that with respect to entries of similar resolution.

The Analysed column shows the number of residues for which the sidechain conformation was analysed, and the total number of residues.

Mol	Chain	Analysed	Rotameric	Outliers	Percentiles	
1	A	438/445 (98%)	436 (100%)	2 (0%)	86	82

All (2) residues with a non-rotameric sidechain are listed below:

Mol	Chain	Res	Type
1	A	301	TRP
1	A	519	TRP

Sometimes sidechains can be flipped to improve hydrogen bonding and reduce clashes. There are no such sidechains identified.

### 5.3.3 RNA [i](#)

There are no RNA molecules in this entry.

## 5.4 Non-standard residues in protein, DNA, RNA chains [i](#)

There are no non-standard protein/DNA/RNA residues in this entry.

## 5.5 Carbohydrates [i](#)

There are no oligosaccharides in this entry.

## 5.6 Ligand geometry [i](#)

Of 10 ligands modelled in this entry, 1 is monoatomic - leaving 9 for Mogul analysis.

In the following table, the Counts columns list the number of bonds (or angles) for which Mogul statistics could be retrieved, the number of bonds (or angles) that are observed in the model and the number of bonds (or angles) that are defined in the Chemical Component Dictionary. The Link column lists molecule types, if any, to which the group is linked. The Z score for a bond length (or angle) is the number of standard deviations the observed value is removed from the expected value. A bond length (or angle) with  $|Z| > 2$  is considered an outlier worth inspection. RMSZ is the root-mean-square of all Z scores of the bond lengths (or angles).

Mol	Type	Chain	Res	Link	Bond lengths			Bond angles		
					Counts	RMSZ	# Z  > 2	Counts	RMSZ	# Z  > 2
2	HEC	A	601	1	32,50,50	1.96	3 (9%)	30,82,82	2.43	8 (26%)
2	HEC	A	606	1	32,50,50	1.92	4 (12%)	30,82,82	2.36	8 (26%)
2	HEC	A	608	1	32,50,50	1.99	4 (12%)	30,82,82	2.69	9 (30%)
2	HEC	A	607	1	32,50,50	1.94	3 (9%)	30,82,82	2.94	11 (36%)
2	HEC	A	603	1	32,50,50	1.88	6 (18%)	30,82,82	2.57	8 (26%)
2	HEC	A	602	1	32,50,50	2.08	5 (15%)	30,82,82	2.93	12 (40%)
2	HEC	A	604	1,5	32,50,50	2.03	4 (12%)	30,82,82	2.56	10 (33%)
4	NAG	A	610	-	14,14,15	0.66	1 (7%)	17,19,21	0.62	0
2	HEC	A	605	1	32,50,50	1.94	4 (12%)	30,82,82	2.68	8 (26%)

In the following table, the Chirals column lists the number of chiral outliers, the number of chiral centers analysed, the number of these observed in the model and the number defined in the Chemical Component Dictionary. Similar counts are reported in the Torsion and Rings columns. '-' means no outliers of that kind were identified.

Mol	Type	Chain	Res	Link	Chirals	Torsions	Rings
2	HEC	A	601	1	-	0/10/54/54	-
2	HEC	A	606	1	-	4/10/54/54	-
2	HEC	A	608	1	-	3/10/54/54	-
2	HEC	A	607	1	-	3/10/54/54	-
2	HEC	A	603	1	-	2/10/54/54	-
2	HEC	A	602	1	-	6/10/54/54	-
2	HEC	A	604	1,5	-	2/10/54/54	-
4	NAG	A	610	-	-	0/6/23/26	0/1/1/1
2	HEC	A	605	1	-	2/10/54/54	-

All (34) bond length outliers are listed below:

Mol	Chain	Res	Type	Atoms	Z	Observed(Å)	Ideal(Å)
2	A	604	HEC	C2B-C3B	-5.66	1.34	1.40
2	A	607	HEC	C2B-C3B	-5.59	1.34	1.40

*Continued on next page...*

*Continued from previous page...*

Mol	Chain	Res	Type	Atoms	Z	Observed(Å)	Ideal(Å)
2	A	604	HEC	C3C-C2C	-5.52	1.34	1.40
2	A	602	HEC	C2B-C3B	-5.51	1.34	1.40
2	A	608	HEC	C3C-C2C	-5.47	1.34	1.40
2	A	605	HEC	C3C-C2C	-5.42	1.34	1.40
2	A	602	HEC	C3C-C2C	-5.24	1.34	1.40
2	A	601	HEC	C3D-C2D	5.23	1.53	1.37
2	A	608	HEC	C2B-C3B	-5.11	1.35	1.40
2	A	601	HEC	C2B-C3B	-5.07	1.35	1.40
2	A	606	HEC	C3D-C2D	5.07	1.52	1.37
2	A	604	HEC	C3D-C2D	5.05	1.52	1.37
2	A	606	HEC	C3C-C2C	-5.04	1.35	1.40
2	A	602	HEC	C3D-C2D	5.03	1.52	1.37
2	A	605	HEC	C3D-C2D	4.93	1.52	1.37
2	A	607	HEC	C3C-C2C	-4.92	1.35	1.40
2	A	603	HEC	C3D-C2D	4.82	1.52	1.37
2	A	607	HEC	C3D-C2D	4.80	1.51	1.37
2	A	601	HEC	C3C-C2C	-4.79	1.35	1.40
2	A	606	HEC	C2B-C3B	-4.72	1.35	1.40
2	A	605	HEC	C2B-C3B	-4.67	1.35	1.40
2	A	608	HEC	C3D-C2D	4.56	1.51	1.37
2	A	603	HEC	C2B-C3B	-4.28	1.35	1.40
2	A	603	HEC	C3C-C2C	-4.18	1.36	1.40
2	A	603	HEC	C4D-ND	2.66	1.41	1.36
2	A	608	HEC	CAA-C2A	2.52	1.56	1.52
2	A	603	HEC	CAA-C2A	2.43	1.56	1.52
4	A	610	NAG	C1-C2	-2.27	1.49	1.52
2	A	602	HEC	CMD-C2D	2.21	1.56	1.51
2	A	603	HEC	CBB-CAB	2.20	1.57	1.49
2	A	605	HEC	CBB-CAB	2.15	1.57	1.49
2	A	602	HEC	CBB-CAB	2.10	1.57	1.49
2	A	604	HEC	C4D-ND	2.09	1.40	1.36
2	A	606	HEC	C1D-ND	2.03	1.40	1.36

All (74) bond angle outliers are listed below:

Mol	Chain	Res	Type	Atoms	Z	Observed(°)	Ideal(°)
2	A	606	HEC	CMC-C2C-C1C	-8.64	115.80	128.46
2	A	604	HEC	CBC-CAC-C3C	-7.49	109.97	127.49
2	A	605	HEC	CBB-CAB-C3B	-7.20	110.64	127.49
2	A	603	HEC	CMC-C2C-C1C	-7.06	118.12	128.46
2	A	607	HEC	CMC-C2C-C1C	-6.96	118.27	128.46
2	A	602	HEC	CBB-CAB-C3B	-6.78	111.62	127.49

*Continued on next page...*

*Continued from previous page...*

Mol	Chain	Res	Type	Atoms	Z	Observed(°)	Ideal(°)
2	A	603	HEC	CBB-CAB-C3B	-6.77	111.64	127.49
2	A	601	HEC	CMC-C2C-C1C	-6.69	118.66	128.46
2	A	607	HEC	CMB-C2B-C3B	6.20	133.11	125.82
2	A	607	HEC	CBB-CAB-C3B	-6.12	113.17	127.49
2	A	608	HEC	CMC-C2C-C1C	-6.06	119.58	128.46
2	A	605	HEC	CBD-CAD-C3D	-6.03	102.40	112.54
2	A	608	HEC	CMB-C2B-C3B	5.93	132.79	125.82
2	A	602	HEC	CMC-C2C-C1C	-5.90	119.81	128.46
2	A	608	HEC	CMB-C2B-C1B	-5.64	120.19	128.46
2	A	605	HEC	CMC-C2C-C1C	-5.64	120.20	128.46
2	A	601	HEC	CBB-CAB-C3B	-5.49	114.63	127.49
2	A	607	HEC	CBD-CAD-C3D	-5.49	103.31	112.54
2	A	602	HEC	CBC-CAC-C3C	-5.27	115.15	127.49
2	A	605	HEC	CBC-CAC-C3C	-5.25	115.20	127.49
2	A	602	HEC	CMB-C2B-C3B	5.23	131.97	125.82
2	A	601	HEC	CMB-C2B-C3B	4.82	131.48	125.82
2	A	604	HEC	CBA-CAA-C2A	-4.80	104.64	112.55
2	A	603	HEC	CMB-C2B-C3B	4.75	131.41	125.82
2	A	607	HEC	CMB-C2B-C1B	-4.70	121.58	128.46
2	A	608	HEC	CBC-CAC-C3C	-4.69	116.51	127.49
2	A	608	HEC	CBB-CAB-C3B	-4.49	116.99	127.49
2	A	604	HEC	CMC-C2C-C1C	-4.49	121.88	128.46
2	A	603	HEC	CMB-C2B-C1B	-4.39	122.02	128.46
2	A	601	HEC	CMB-C2B-C1B	-4.26	122.21	128.46
2	A	601	HEC	CBA-CAA-C2A	-4.22	105.59	112.55
2	A	608	HEC	C1D-C2D-C3D	-4.17	104.10	107.00
2	A	607	HEC	CBC-CAC-C3C	-4.13	117.83	127.49
2	A	602	HEC	C2B-C3B-C4B	4.12	110.80	106.35
2	A	602	HEC	CMD-C2D-C3D	4.03	132.54	124.94
2	A	603	HEC	CBC-CAC-C3C	-4.01	118.11	127.49
2	A	606	HEC	CBB-CAB-C3B	-4.01	118.11	127.49
2	A	607	HEC	C2B-C3B-C4B	3.98	110.65	106.35
2	A	602	HEC	C1D-C2D-C3D	-3.88	104.30	107.00
2	A	604	HEC	C4C-C3C-C2C	3.84	110.50	106.35
2	A	603	HEC	CBD-CAD-C3D	-3.83	106.09	112.54
2	A	606	HEC	CBC-CAC-C3C	-3.67	118.91	127.49
2	A	602	HEC	CMD-C2D-C1D	-3.62	123.16	128.46
2	A	602	HEC	CMB-C2B-C1B	-3.58	123.21	128.46
2	A	605	HEC	CMB-C2B-C1B	-3.58	123.22	128.46
2	A	604	HEC	CMB-C2B-C1B	-3.57	123.23	128.46
2	A	604	HEC	CBD-CAD-C3D	-3.48	106.69	112.54
2	A	604	HEC	CMC-C2C-C3C	3.44	129.86	125.82

*Continued on next page...*

Continued from previous page...

Mol	Chain	Res	Type	Atoms	Z	Observed(°)	Ideal(°)
2	A	605	HEC	CMB-C2B-C3B	3.38	129.79	125.82
2	A	606	HEC	CMB-C2B-C1B	-3.36	123.54	128.46
2	A	608	HEC	CBD-CAD-C3D	-3.33	106.94	112.54
2	A	607	HEC	CAA-CBA-CGA	-3.26	105.05	113.83
2	A	605	HEC	C4C-C3C-C2C	3.25	109.86	106.35
2	A	604	HEC	CBB-CAB-C3B	-3.19	120.02	127.49
2	A	608	HEC	CMC-C2C-C3C	3.18	129.56	125.82
2	A	602	HEC	CMC-C2C-C3C	3.15	129.52	125.82
2	A	603	HEC	CBA-CAA-C2A	-3.00	107.61	112.55
2	A	601	HEC	CBC-CAC-C3C	-2.96	120.56	127.49
2	A	606	HEC	C1D-C2D-C3D	-2.88	104.99	107.00
2	A	604	HEC	CMB-C2B-C3B	2.67	128.95	125.82
2	A	606	HEC	CMB-C2B-C3B	2.66	128.95	125.82
2	A	602	HEC	CAA-CBA-CGA	-2.44	107.25	113.83
2	A	607	HEC	C1D-C2D-C3D	-2.43	105.31	107.00
2	A	601	HEC	C2B-C3B-C4B	2.42	108.97	106.35
2	A	607	HEC	C3B-C4B-NB	-2.39	106.42	110.94
2	A	602	HEC	CBD-CAD-C3D	2.33	116.46	112.54
2	A	601	HEC	CBD-CAD-C3D	-2.27	108.72	112.54
2	A	604	HEC	CMA-C3A-C2A	2.26	129.20	124.94
2	A	608	HEC	C4C-C3C-C2C	2.24	108.77	106.35
2	A	605	HEC	C2B-C3B-C4B	2.23	108.76	106.35
2	A	603	HEC	C2B-C3B-C4B	2.20	108.72	106.35
2	A	606	HEC	CAD-CBD-CGD	-2.14	108.07	113.83
2	A	607	HEC	CBA-CAA-C2A	-2.03	109.21	112.55
2	A	606	HEC	CBD-CAD-C3D	-2.02	109.14	112.54

There are no chirality outliers.

All (22) torsion outliers are listed below:

Mol	Chain	Res	Type	Atoms
2	A	602	HEC	C2D-C3D-CAD-CBD
2	A	602	HEC	C4D-C3D-CAD-CBD
2	A	608	HEC	C3D-CAD-CBD-CGD
2	A	607	HEC	C3D-CAD-CBD-CGD
2	A	606	HEC	CAD-CBD-CGD-O2D
2	A	606	HEC	CAD-CBD-CGD-O1D
2	A	605	HEC	CAA-CBA-CGA-O1A
2	A	604	HEC	CAA-CBA-CGA-O1A
2	A	608	HEC	CAD-CBD-CGD-O1D
2	A	605	HEC	CAA-CBA-CGA-O2A
2	A	604	HEC	CAA-CBA-CGA-O2A

Continued on next page...

*Continued from previous page...*

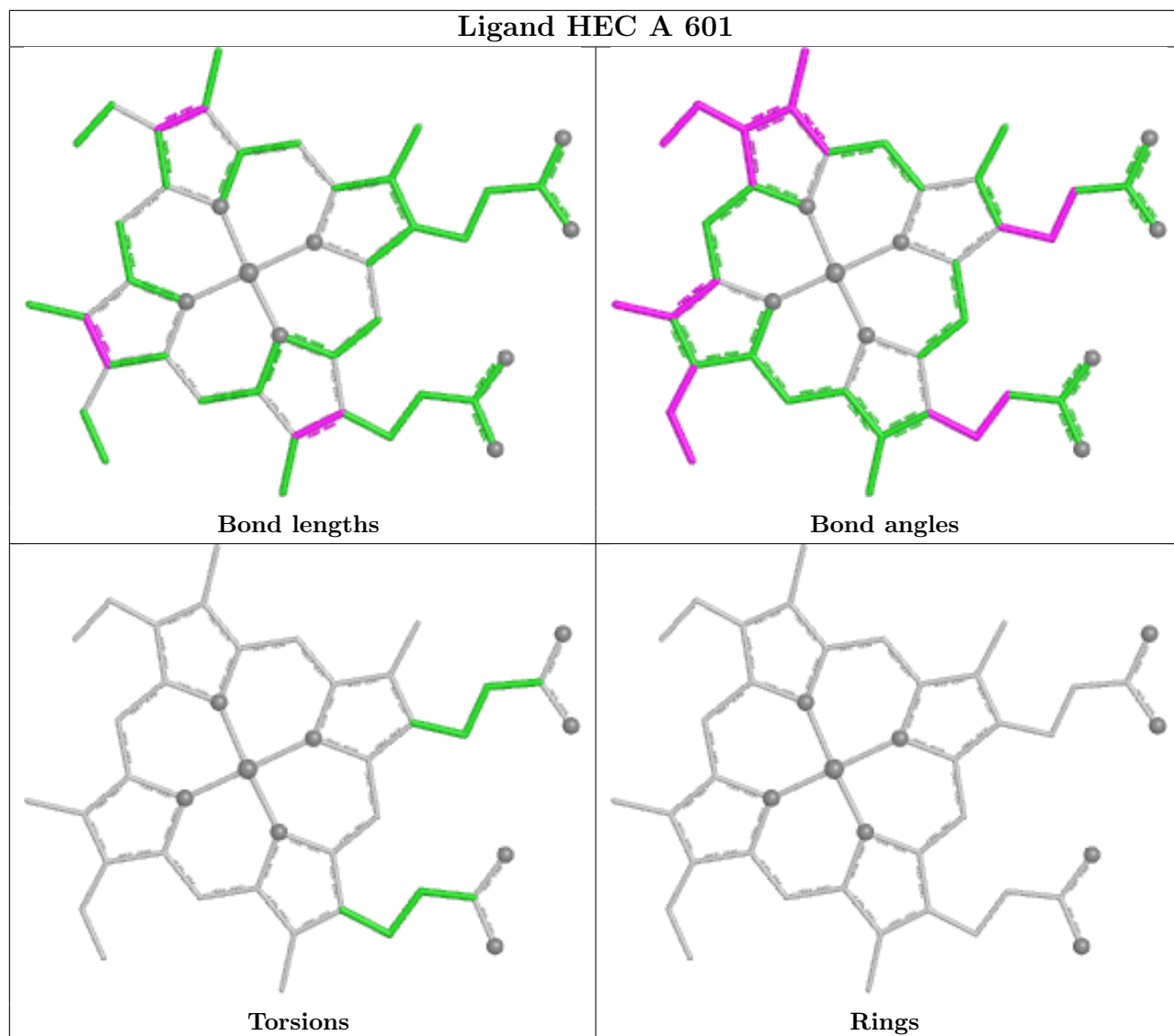
Mol	Chain	Res	Type	Atoms
2	A	608	HEC	CAD-CBD-CGD-O2D
2	A	606	HEC	CAA-CBA-CGA-O1A
2	A	607	HEC	CAA-CBA-CGA-O1A
2	A	602	HEC	CAD-CBD-CGD-O2D
2	A	606	HEC	CAA-CBA-CGA-O2A
2	A	607	HEC	CAA-CBA-CGA-O2A
2	A	603	HEC	CAD-CBD-CGD-O2D
2	A	602	HEC	CAD-CBD-CGD-O1D
2	A	603	HEC	CAD-CBD-CGD-O1D
2	A	602	HEC	CAA-CBA-CGA-O1A
2	A	602	HEC	CAA-CBA-CGA-O2A

There are no ring outliers.

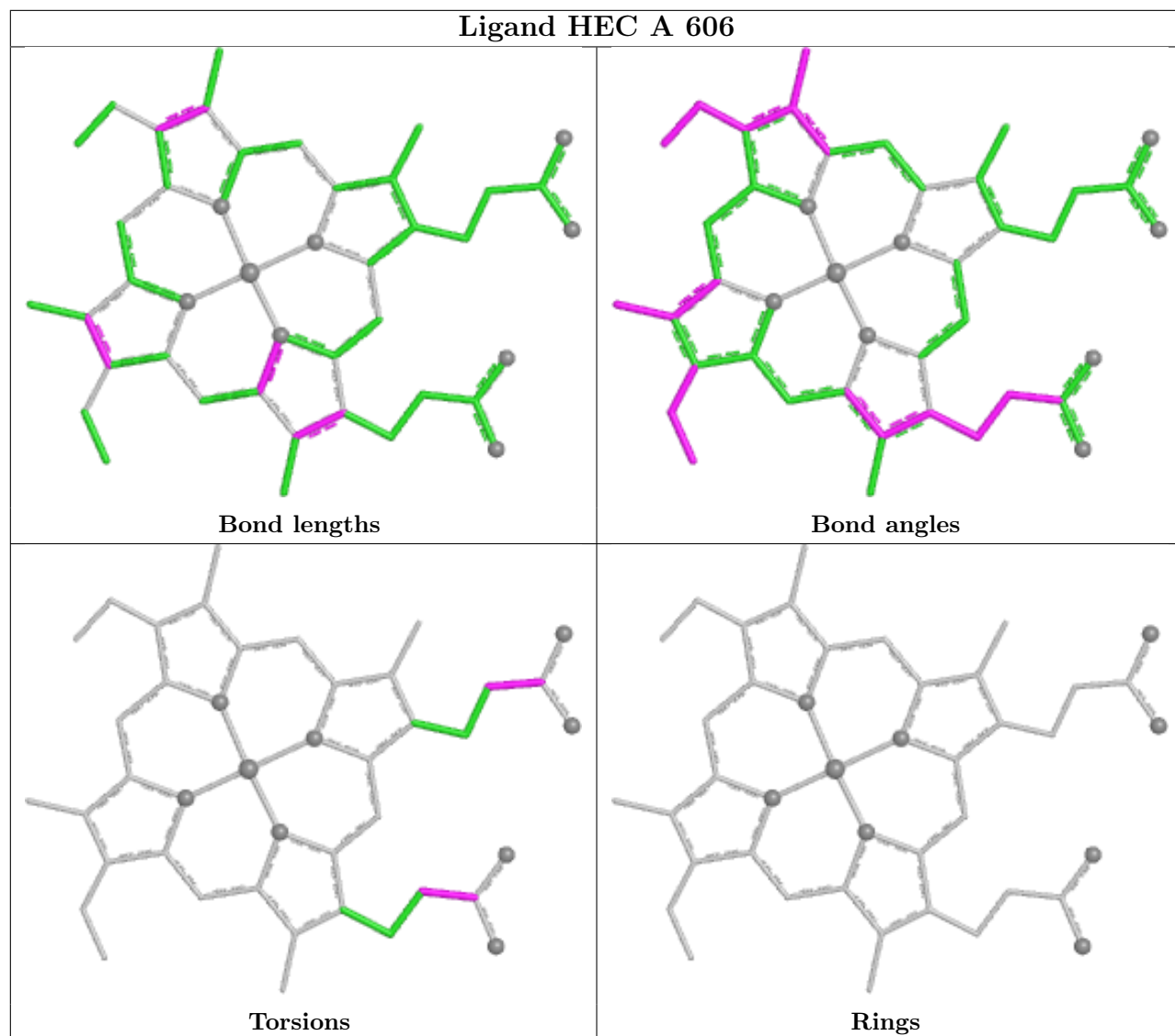
9 monomers are involved in 29 short contacts:

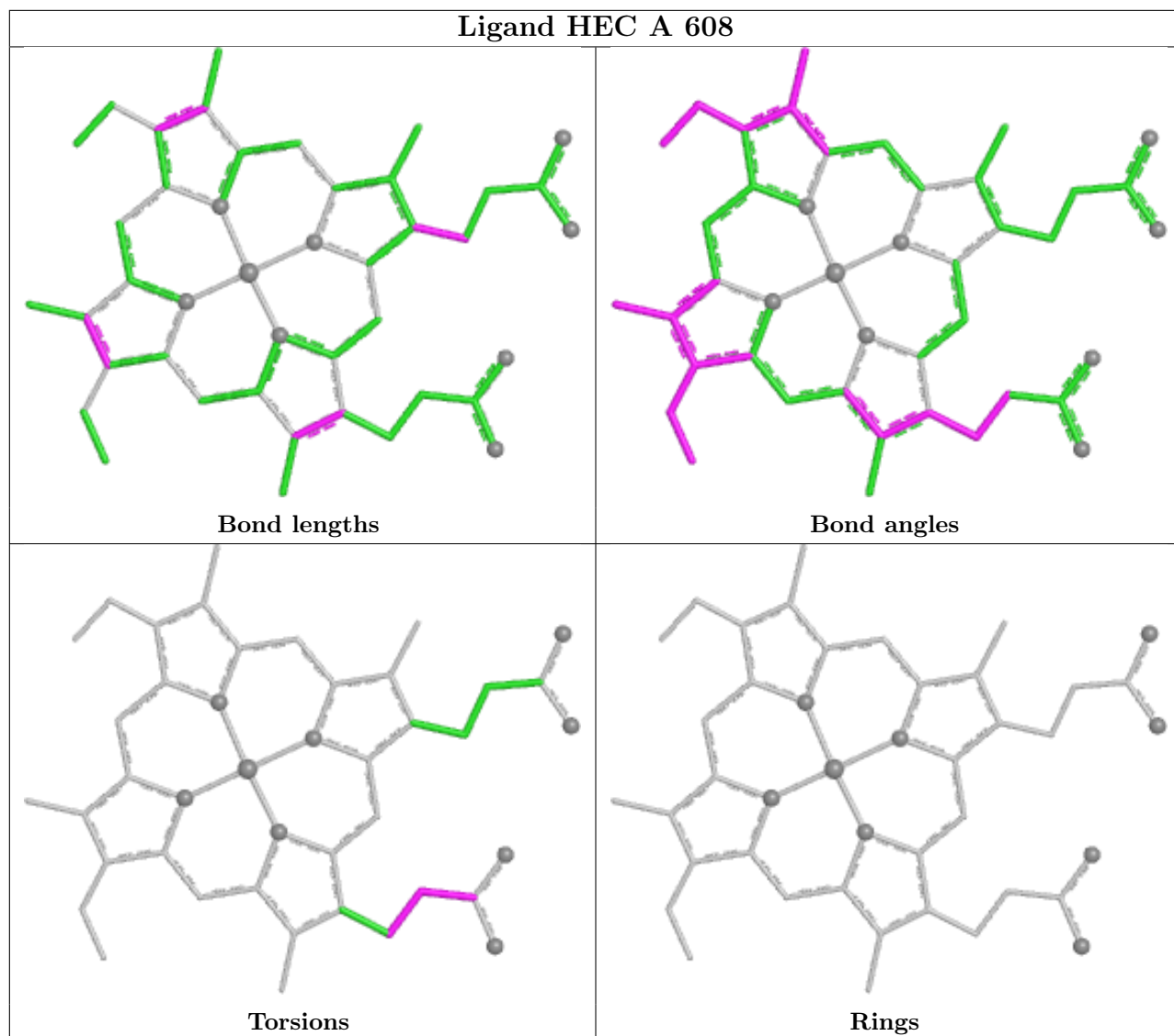
Mol	Chain	Res	Type	Clashes	Symm-Clashes
2	A	601	HEC	4	0
2	A	606	HEC	4	0
2	A	608	HEC	3	0
2	A	607	HEC	5	0
2	A	603	HEC	3	0
2	A	602	HEC	4	0
2	A	604	HEC	4	0
4	A	610	NAG	1	0
2	A	605	HEC	4	0

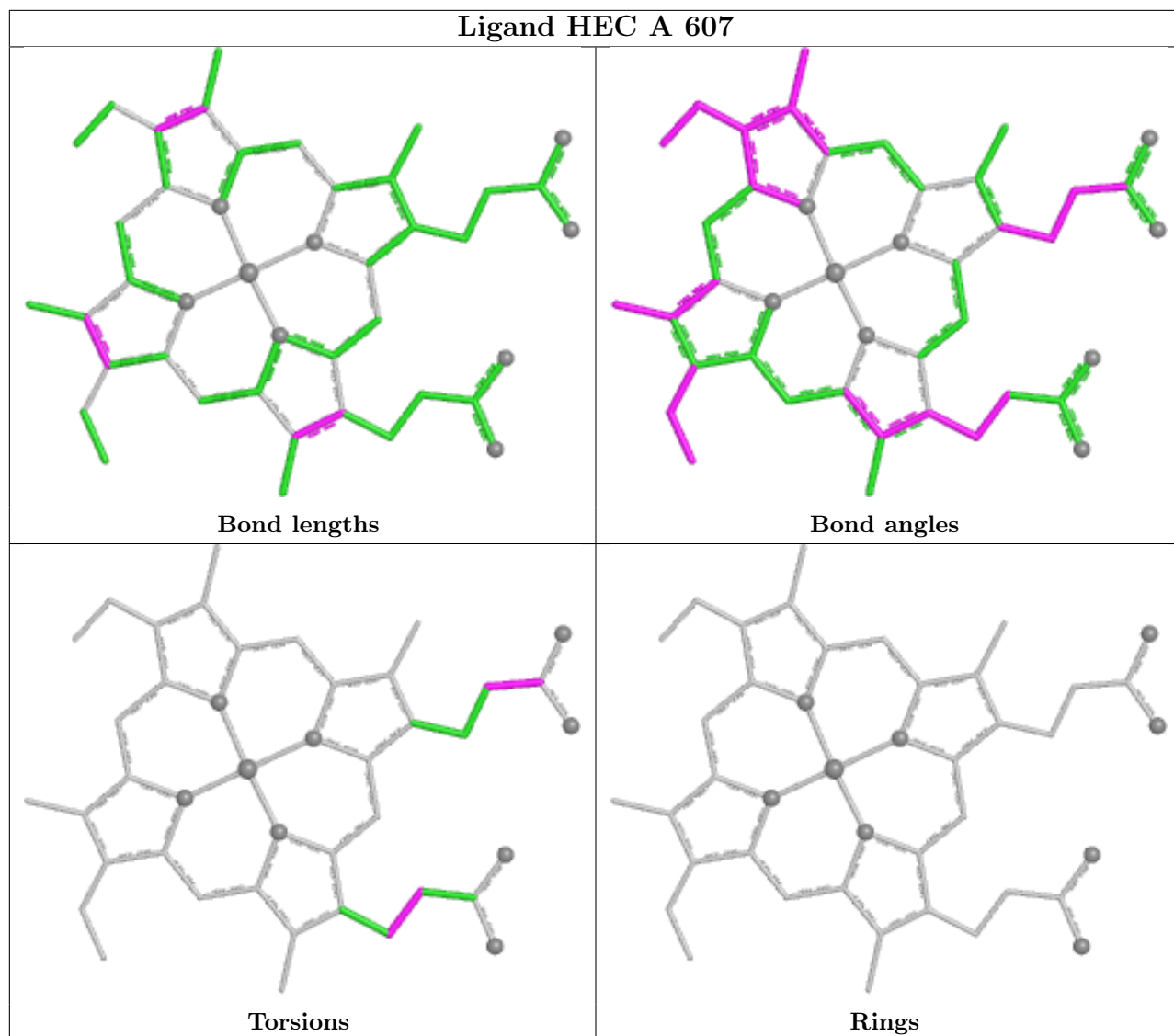
The following is a two-dimensional graphical depiction of Mogul quality analysis of bond lengths, bond angles, torsion angles, and ring geometry for all instances of the Ligand of Interest. In addition, ligands with molecular weight > 250 and outliers as shown on the validation Tables will also be included. For torsion angles, if less than 5% of the Mogul distribution of torsion angles is within 10 degrees of the torsion angle in question, then that torsion angle is considered an outlier. Any bond that is central to one or more torsion angles identified as an outlier by Mogul will be highlighted in the graph. For rings, the root-mean-square deviation (RMSD) between the ring in question and similar rings identified by Mogul is calculated over all ring torsion angles. If the average RMSD is greater than 60 degrees and the minimal RMSD between the ring in question and any Mogul-identified rings is also greater than 60 degrees, then that ring is considered an outlier. The outliers are highlighted in purple. The color gray indicates Mogul did not find sufficient equivalents in the CSD to analyse the geometry.

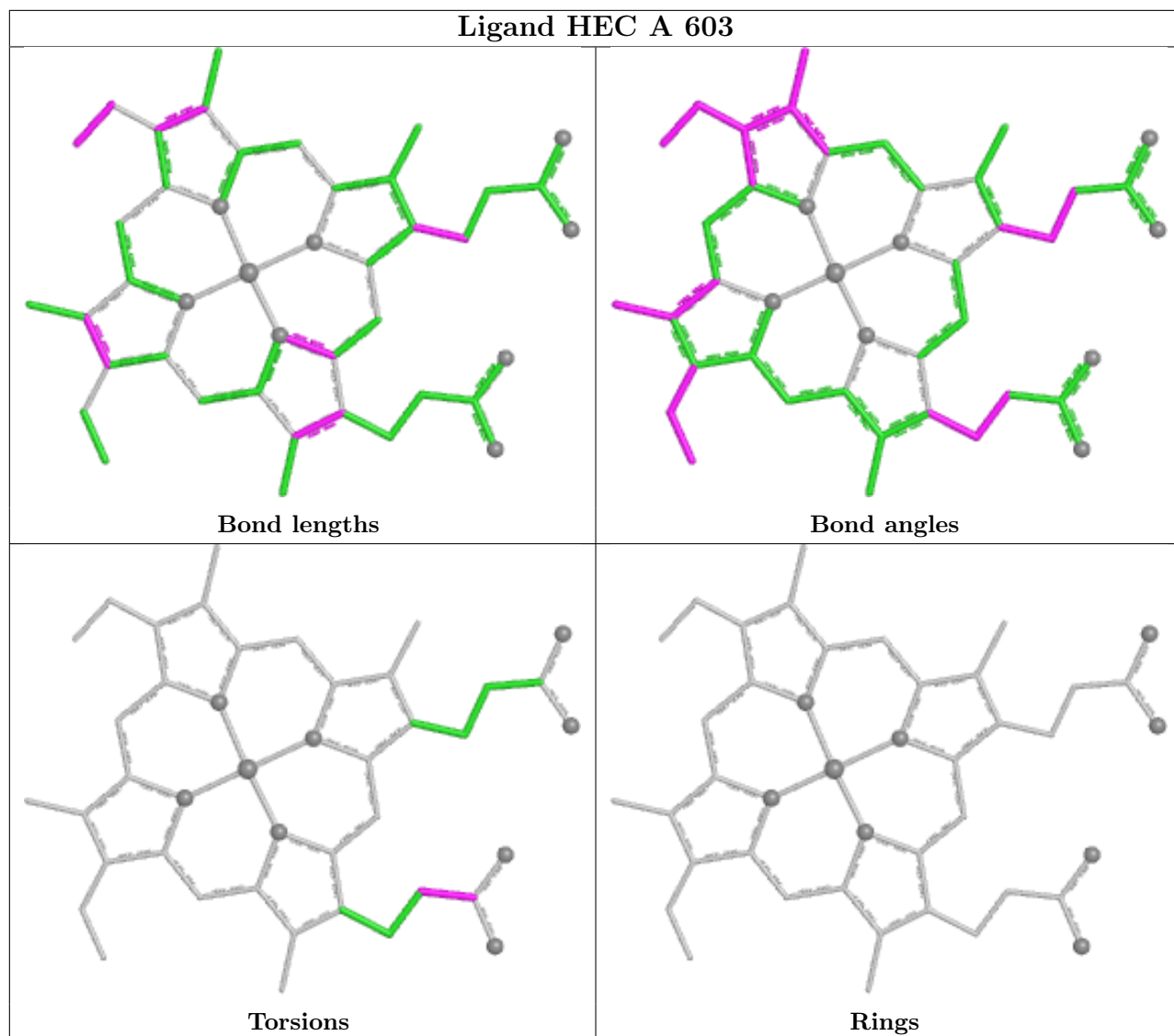


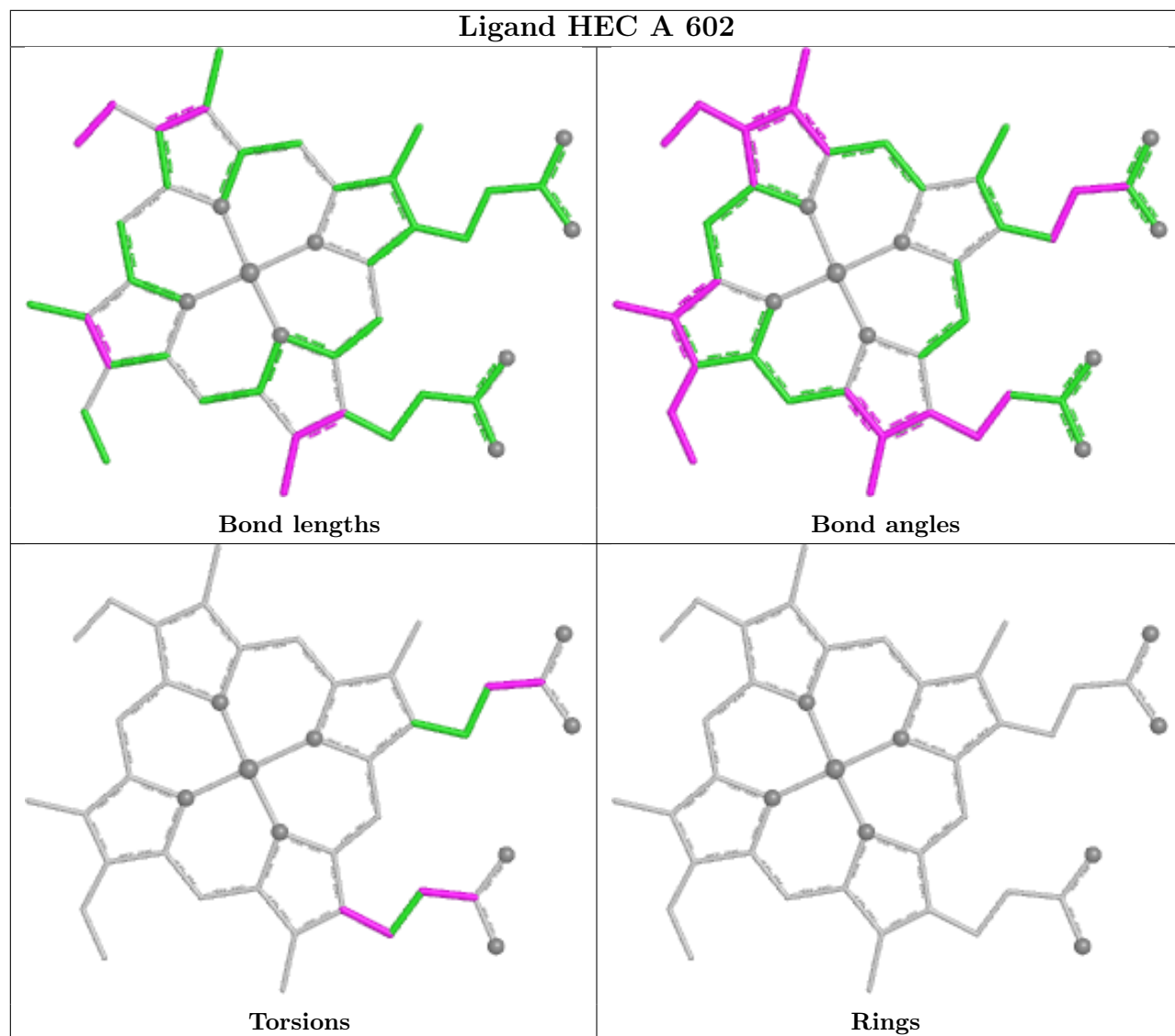


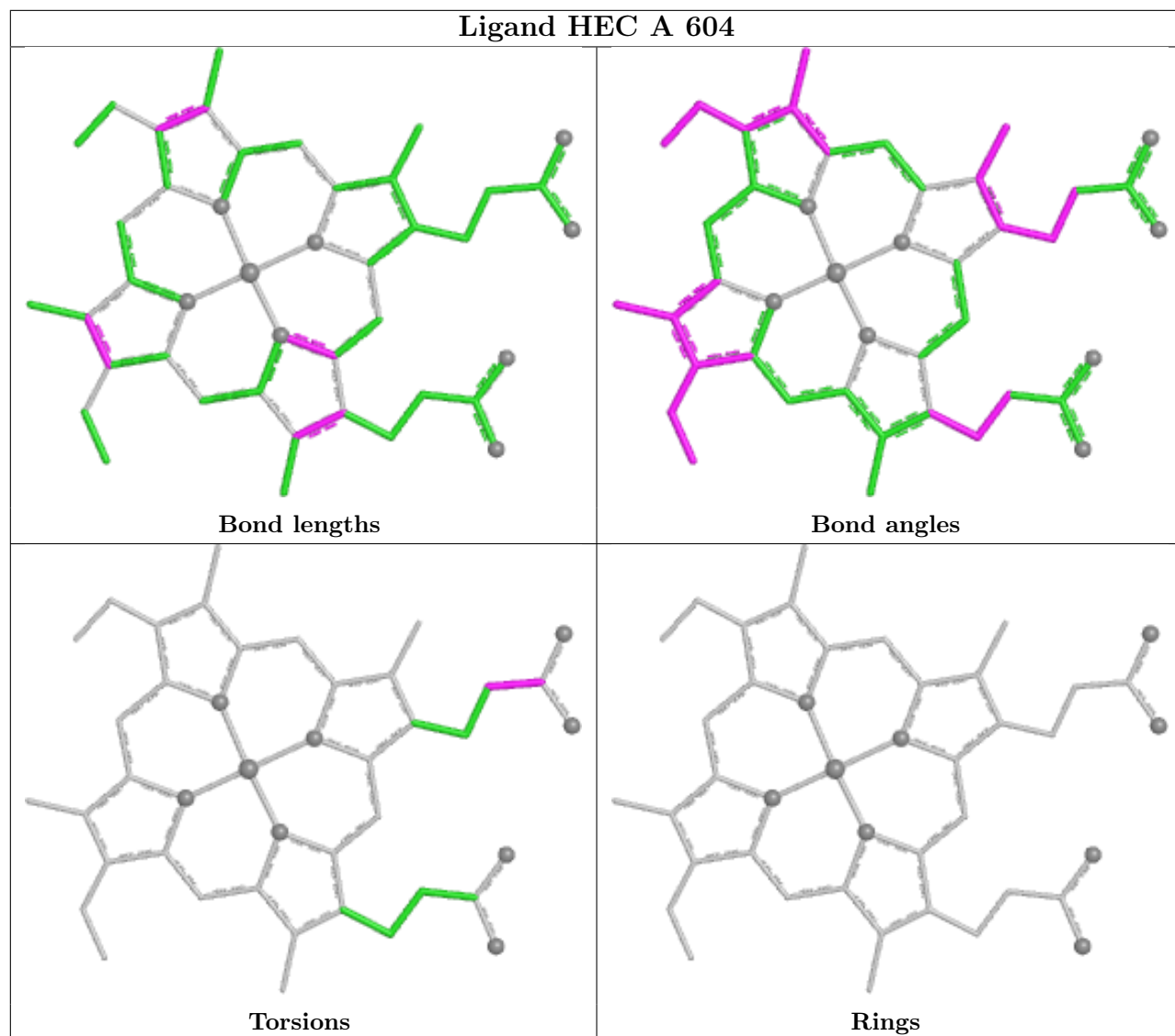


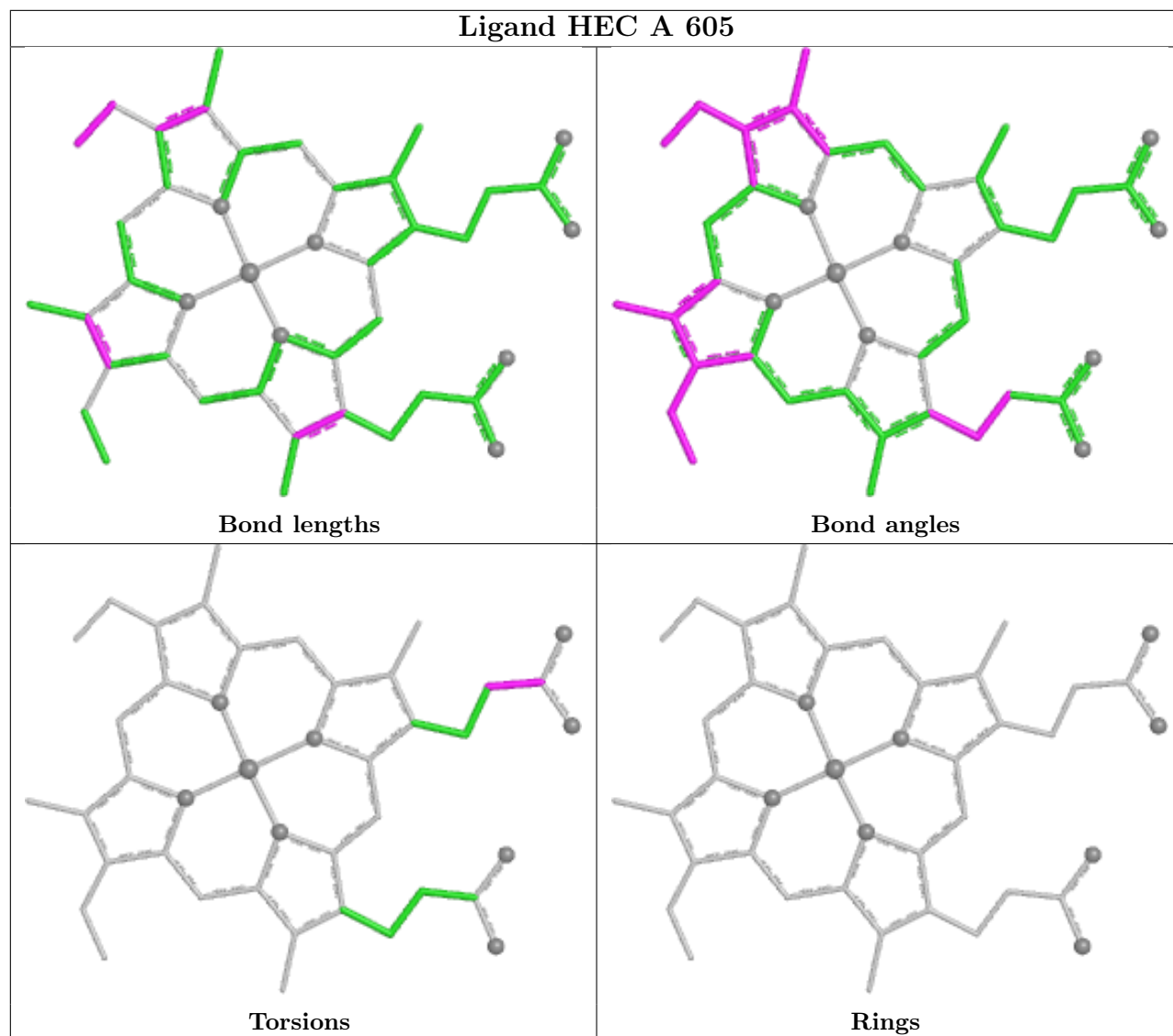












## 5.7 Other polymers [i](#)

There are no such residues in this entry.

## 5.8 Polymer linkage issues [i](#)

There are no chain breaks in this entry.

## 6 Fit of model and data [i](#)

### 6.1 Protein, DNA and RNA chains [i](#)

In the following table, the column labelled '#RSRZ > 2' contains the number (and percentage) of RSRZ outliers, followed by percent RSRZ outliers for the chain as percentile scores relative to all X-ray entries and entries of similar resolution. The OWAB column contains the minimum, median, 95<sup>th</sup> percentile and maximum values of the occupancy-weighted average B-factor per residue. The column labelled 'Q < 0.9' lists the number of (and percentage) of residues with an average occupancy less than 0.9.

Mol	Chain	Analysed	<RSRZ>	#RSRZ>2	OWAB(Å <sup>2</sup> )	Q<0.9
1	A	521/521 (100%)	0.15	20 (3%) 44 48	17, 26, 55, 91	0

All (20) RSRZ outliers are listed below:

Mol	Chain	Res	Type	RSRZ
1	A	301	TRP	8.5
1	A	549	ALA	5.0
1	A	482	LEU	4.0
1	A	29	ALA	4.0
1	A	180	MET	3.5
1	A	548	ALA	3.4
1	A	402	LYS	2.8
1	A	547	ARG	2.6
1	A	181	GLY	2.6
1	A	216	ILE	2.6
1	A	518	ASP	2.4
1	A	214	HIS	2.2
1	A	401	ILE	2.2
1	A	211	THR	2.2
1	A	382	ILE	2.1
1	A	403	THR	2.1
1	A	213	SER	2.1
1	A	378	GLN	2.1
1	A	209	VAL	2.1
1	A	483	ALA	2.0

### 6.2 Non-standard residues in protein, DNA, RNA chains [i](#)

There are no non-standard protein/DNA/RNA residues in this entry.



### 6.3 Carbohydrates [i](#)

There are no monosaccharides in this entry.

### 6.4 Ligands [i](#)

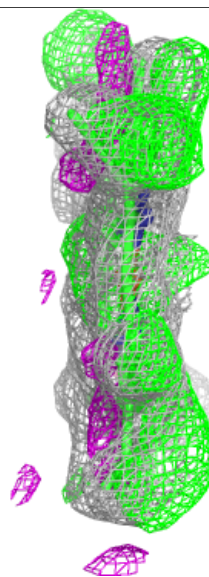
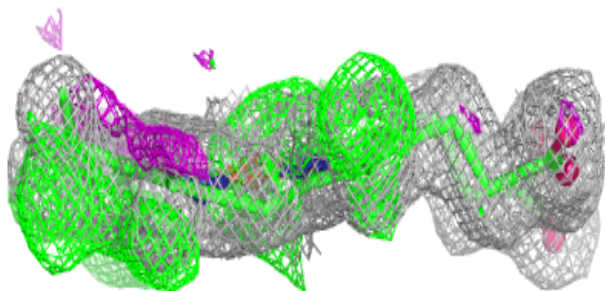
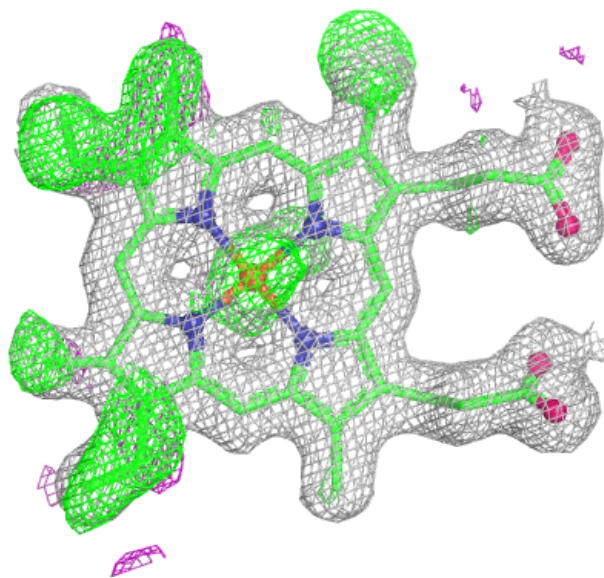
In the following table, the Atoms column lists the number of modelled atoms in the group and the number defined in the chemical component dictionary. The B-factors column lists the minimum, median, 95<sup>th</sup> percentile and maximum values of B factors of atoms in the group. The column labelled 'Q< 0.9' lists the number of atoms with occupancy less than 0.9.

Mol	Type	Chain	Res	Atoms	RSCC	RSR	B-factors(Å <sup>2</sup> )	Q<0.9
4	NAG	A	610	14/15	0.87	0.12	30,34,43,44	0
2	HEC	A	607	43/43	0.94	0.11	15,19,28,39	0
2	HEC	A	601	43/43	0.95	0.11	16,25,37,45	0
2	HEC	A	604	43/43	0.96	0.10	19,22,33,38	0
2	HEC	A	605	43/43	0.96	0.09	13,18,25,27	0
2	HEC	A	606	43/43	0.96	0.10	15,21,30,40	0
2	HEC	A	602	43/43	0.96	0.10	14,18,26,37	0
2	HEC	A	608	43/43	0.96	0.10	14,20,30,34	0
2	HEC	A	603	43/43	0.96	0.09	12,19,28,39	0
3	CA	A	609	1/1	0.98	0.05	30,30,30,30	0

The following is a graphical depiction of the model fit to experimental electron density of all instances of the Ligand of Interest. In addition, ligands with molecular weight > 250 and outliers as shown on the geometry validation Tables will also be included. Each fit is shown from different orientation to approximate a three-dimensional view.

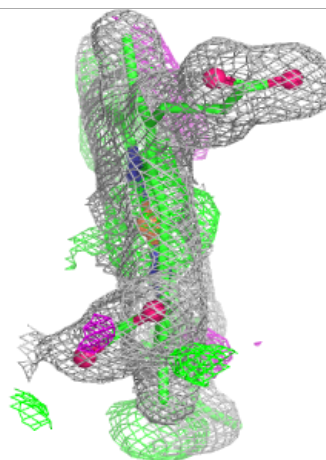
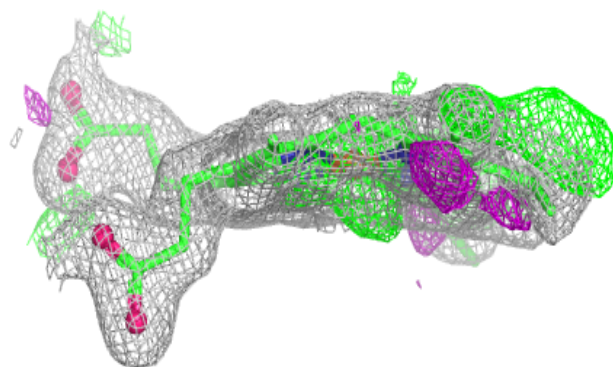
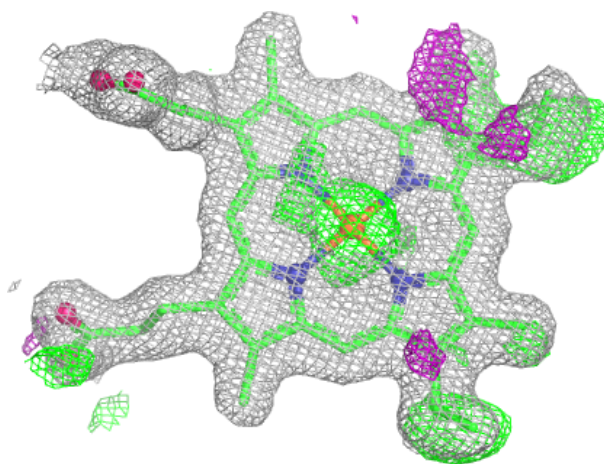
**Electron density around HEC A 607:**

$2mF_o-DF_c$  (at 0.7 rmsd) in gray  
 $mF_o-DF_c$  (at 3 rmsd) in purple (negative)  
and green (positive)



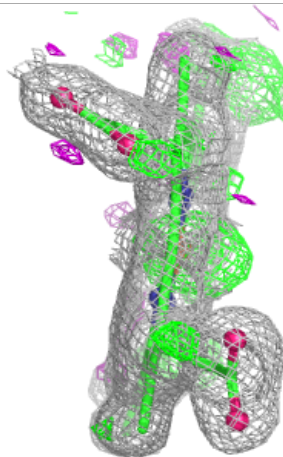
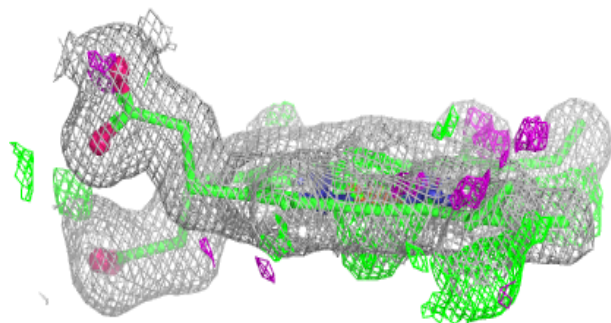
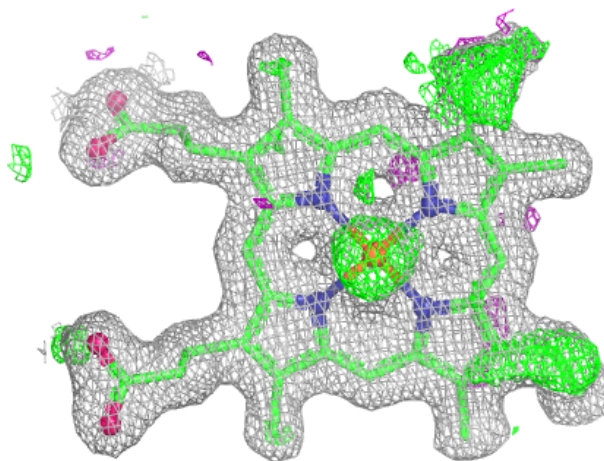
**Electron density around HEC A 601:**

$2mF_o-DF_c$  (at 0.7 rmsd) in gray  
 $mF_o-DF_c$  (at 3 rmsd) in purple (negative)  
and green (positive)



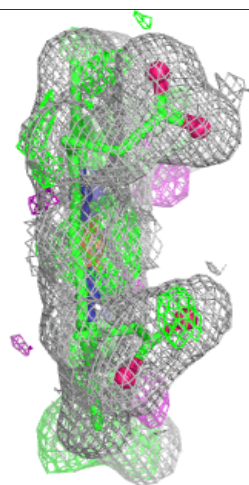
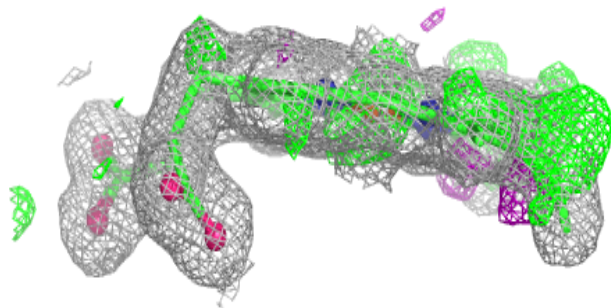
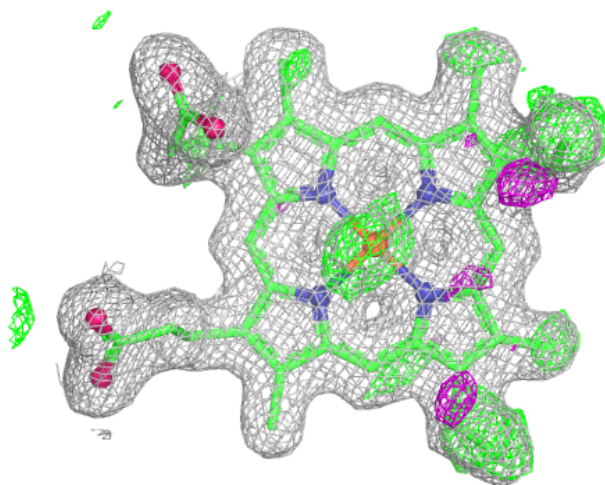
**Electron density around HEC A 604:**

$2mF_o-DF_c$  (at 0.7 rmsd) in gray  
 $mF_o-DF_c$  (at 3 rmsd) in purple (negative)  
and green (positive)



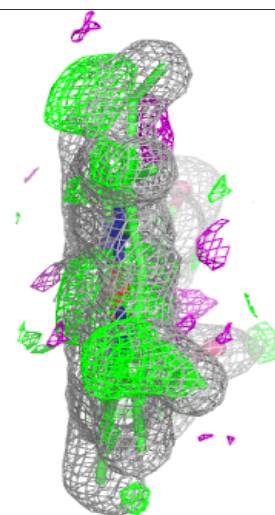
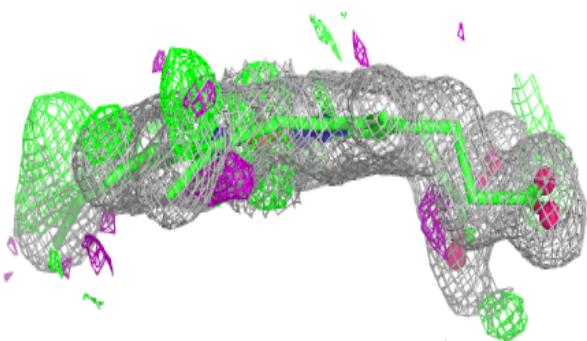
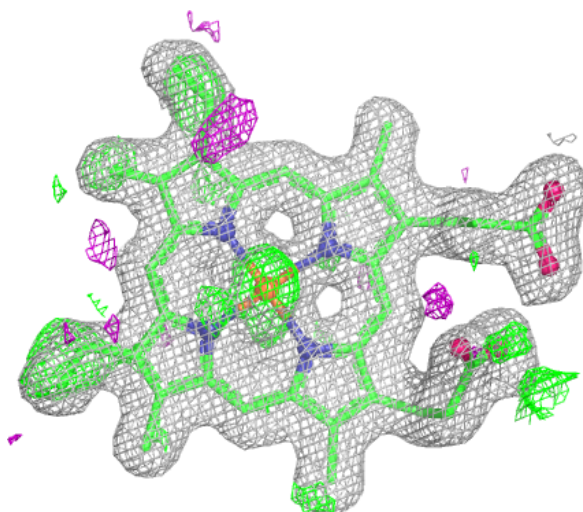
**Electron density around HEC A 605:**

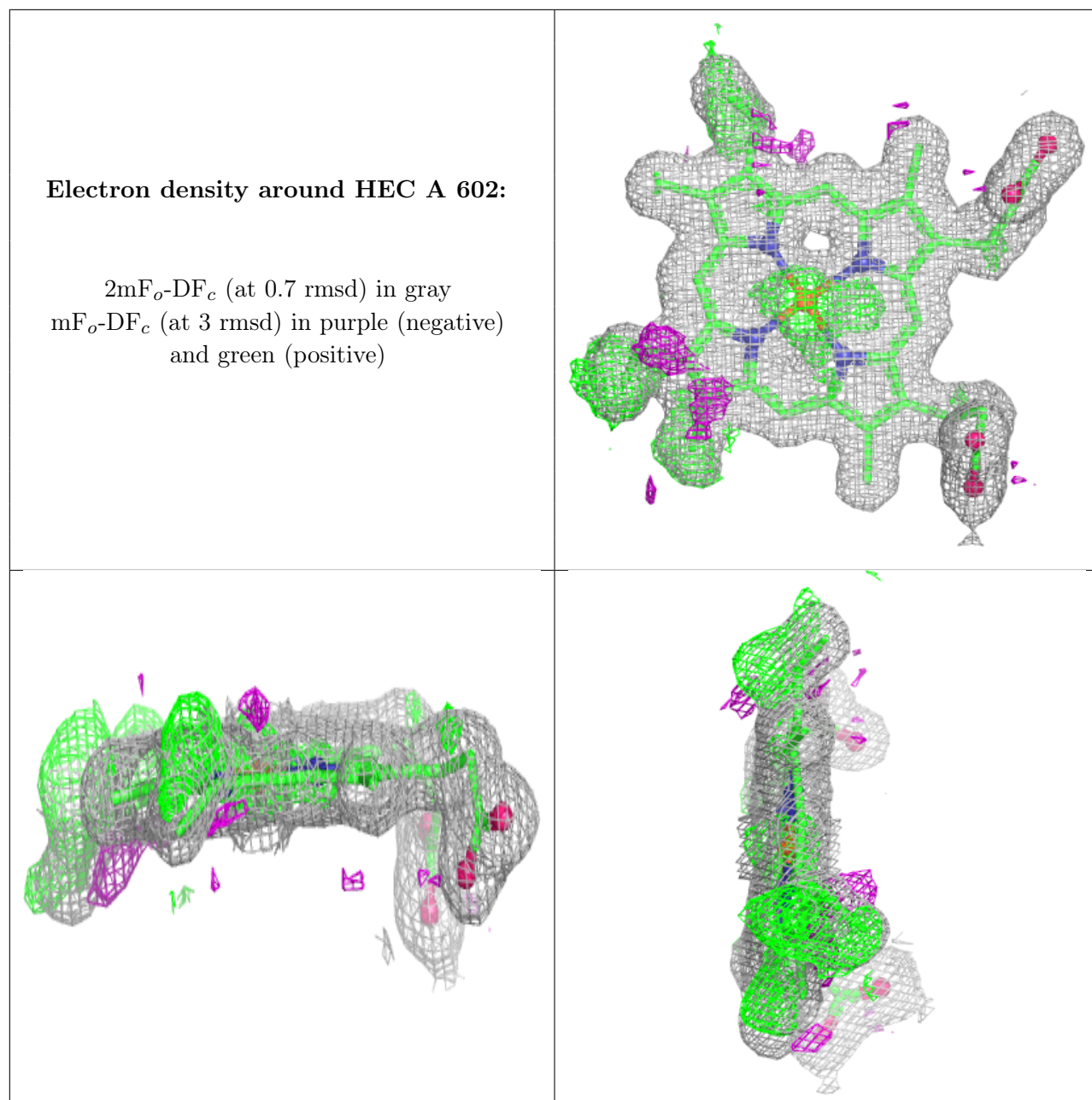
$2mF_o-DF_c$  (at 0.7 rmsd) in gray  
 $mF_o-DF_c$  (at 3 rmsd) in purple (negative)  
and green (positive)



**Electron density around HEC A 606:**

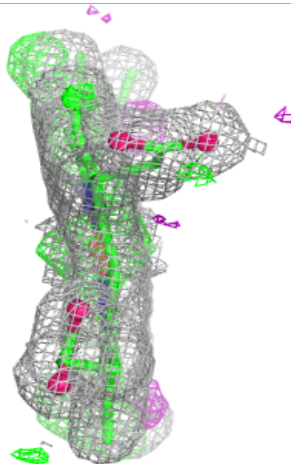
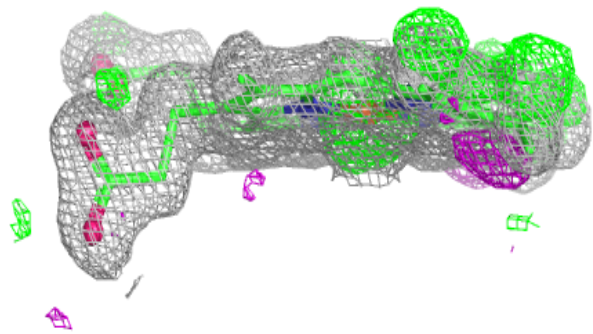
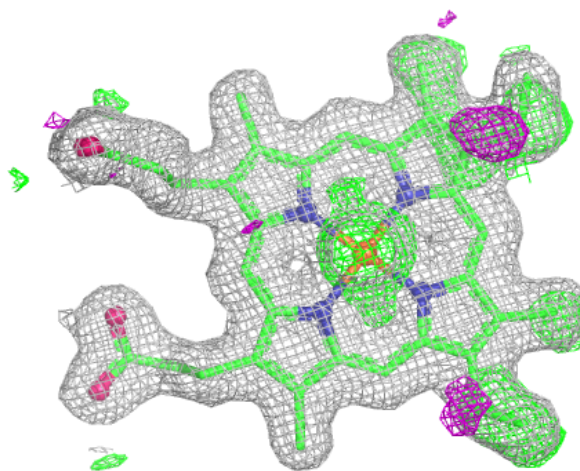
$2mF_o-DF_c$  (at 0.7 rmsd) in gray  
 $mF_o-DF_c$  (at 3 rmsd) in purple (negative)  
and green (positive)



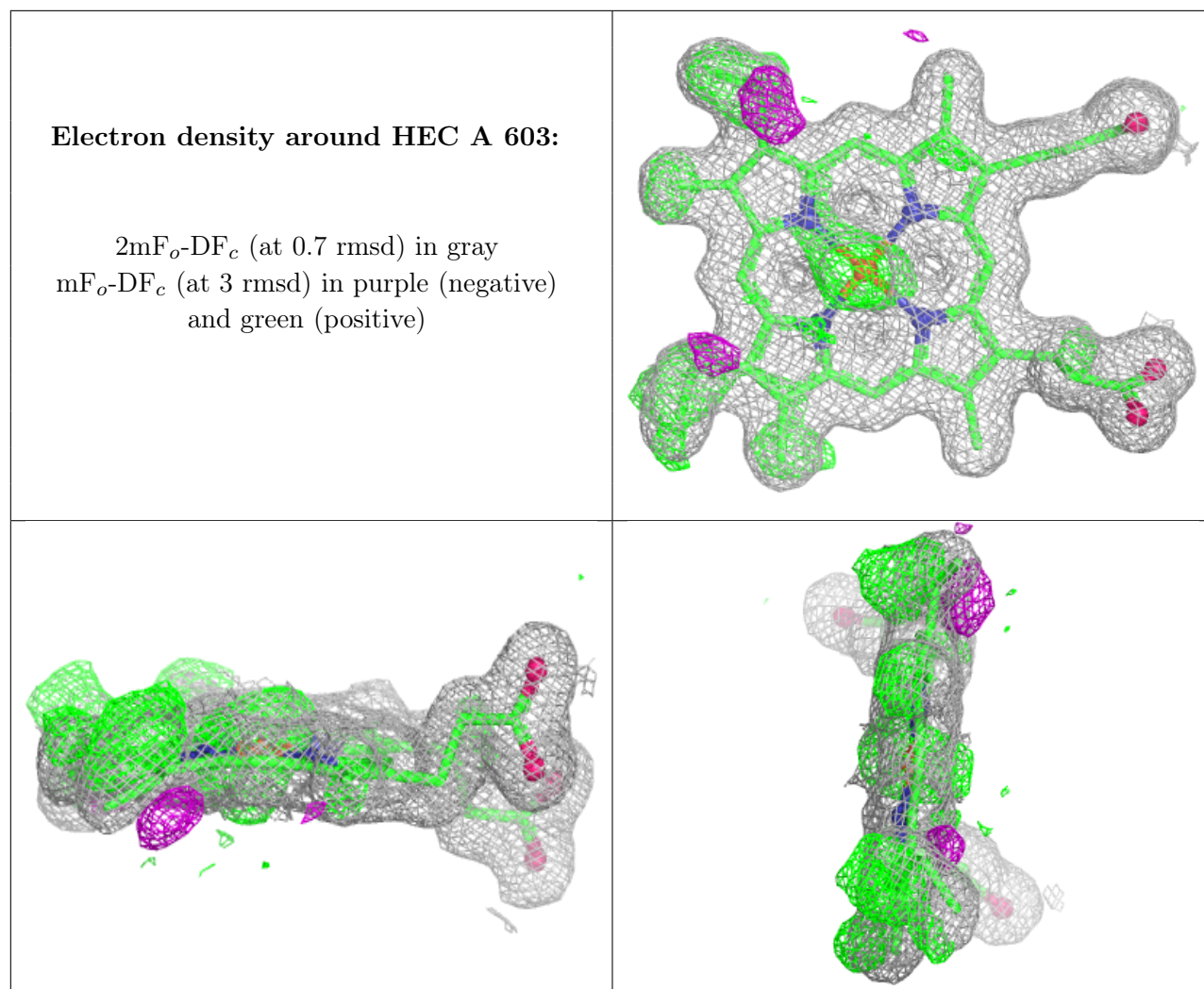


**Electron density around HEC A 608:**

$2mF_o-DF_c$  (at 0.7 rmsd) in gray  
 $mF_o-DF_c$  (at 3 rmsd) in purple (negative)  
and green (positive)







## 6.5 Other polymers [\(i\)](#)

There are no such residues in this entry.