



Full wwPDB X-ray Structure Validation Report ⓘ

Sep 12, 2023 – 09:33 PM EDT

PDB ID : 4OIN
Title : Crystal structure of Thermus thermophilus transcription initiation complex soaked with GE23077
Authors : Zhang, Y.; Ebright, R.H.; Arnold, E.
Deposited on : 2014-01-20
Resolution : 2.80 Å(reported)

This is a Full wwPDB X-ray Structure Validation Report for a publicly released PDB entry.

We welcome your comments at validation@mail.wwpdb.org

A user guide is available at

<https://www.wwpdb.org/validation/2017/XrayValidationReportHelp>

with specific help available everywhere you see the ⓘ symbol.

The types of validation reports are described at

<http://www.wwpdb.org/validation/2017/FAQs#types>.

The following versions of software and data (see [references ⓘ](#)) were used in the production of this report:

MolProbity : 4.02b-467
Mogul : 1.8.5 (274361), CSD as541be (2020)
Xtriage (Phenix) : 1.13
EDS : 2.35.1
Percentile statistics : 20191225.v01 (using entries in the PDB archive December 25th 2019)
Refmac : 5.8.0158
CCP4 : 7.0.044 (Gargrove)
Ideal geometry (proteins) : Engh & Huber (2001)
Ideal geometry (DNA, RNA) : Parkinson et al. (1996)
Validation Pipeline (wwPDB-VP) : 2.35.1

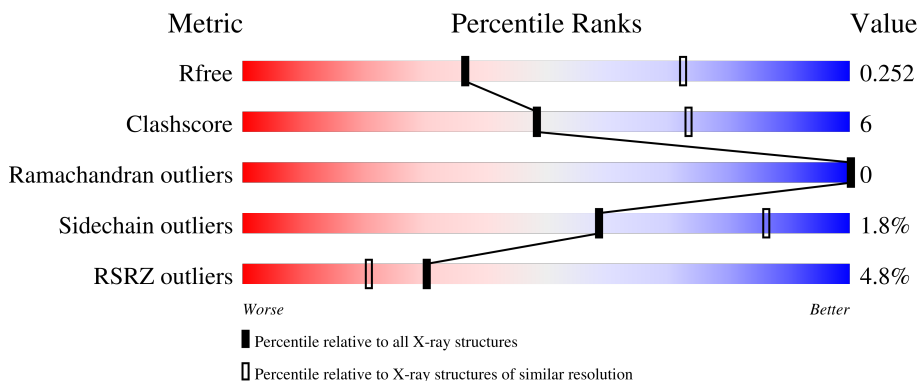
1 Overall quality at a glance i

The following experimental techniques were used to determine the structure:

X-RAY DIFFRACTION

The reported resolution of this entry is 2.80 Å.

Percentile scores (ranging between 0-100) for global validation metrics of the entry are shown in the following graphic. The table shows the number of entries on which the scores are based.



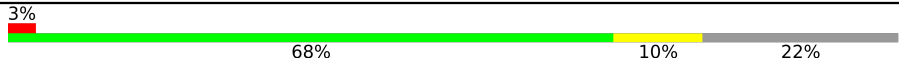
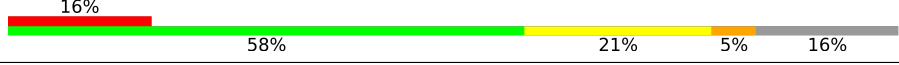
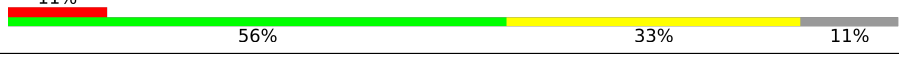
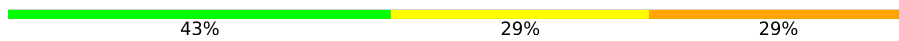
Metric	Whole archive (#Entries)	Similar resolution (#Entries, resolution range(Å))
R_{free}	130704	3140 (2.80-2.80)
Clashscore	141614	3569 (2.80-2.80)
Ramachandran outliers	138981	3498 (2.80-2.80)
Sidechain outliers	138945	3500 (2.80-2.80)
RSRZ outliers	127900	3078 (2.80-2.80)

The table below summarises the geometric issues observed across the polymeric chains and their fit to the electron density. The red, orange, yellow and green segments of the lower bar indicate the fraction of residues that contain outliers for ≥ 3 , 2, 1 and 0 types of geometric quality criteria respectively. A grey segment represents the fraction of residues that are not modelled. The numeric value for each fraction is indicated below the corresponding segment, with a dot representing fractions $\leq 5\%$. The upper red bar (where present) indicates the fraction of residues that have poor fit to the electron density. The numeric value is given above the bar.

Mol	Chain	Length	Quality of chain
1	A	315	<div style="display: flex; align-items: center;"> <div style="width: 2%; height: 10px; background-color: red; margin-right: 2px;"></div> <div style="width: 59%; height: 10px; background-color: green; margin-right: 2px;"></div> <div style="width: 14%; height: 10px; background-color: yellow; margin-right: 2px;"></div> <div style="width: 25%; height: 10px; background-color: grey;"></div> </div> <p style="margin-left: 20px;">2% 59% 14% 27%</p>
1	B	315	<div style="display: flex; align-items: center;"> <div style="width: 2%; height: 10px; background-color: red; margin-right: 2px;"></div> <div style="width: 60%; height: 10px; background-color: green; margin-right: 2px;"></div> <div style="width: 12%; height: 10px; background-color: yellow; margin-right: 2px;"></div> <div style="width: 26%; height: 10px; background-color: grey;"></div> </div> <p style="margin-left: 20px;">2% 60% 12% 28%</p>
2	C	1119	<div style="display: flex; align-items: center;"> <div style="width: 3%; height: 10px; background-color: red; margin-right: 2px;"></div> <div style="width: 83%; height: 10px; background-color: green; margin-right: 2px;"></div> <div style="width: 16%; height: 10px; background-color: yellow; margin-right: 2px;"></div> <div style="width: 1%; height: 10px; background-color: grey;"></div> </div> <p style="margin-left: 20px;">3% 83% 16% ..</p>
3	D	1524	<div style="display: flex; align-items: center;"> <div style="width: 7%; height: 10px; background-color: red; margin-right: 2px;"></div> <div style="width: 80%; height: 10px; background-color: green; margin-right: 2px;"></div> <div style="width: 17%; height: 10px; background-color: yellow; margin-right: 2px;"></div> <div style="width: 1%; height: 10px; background-color: grey;"></div> </div> <p style="margin-left: 20px;">7% 80% 17% ..</p>
4	E	99	<div style="display: flex; align-items: center;"> <div style="width: 85%; height: 10px; background-color: green; margin-right: 2px;"></div> <div style="width: 10%; height: 10px; background-color: yellow; margin-right: 2px;"></div> <div style="width: 5%; height: 10px; background-color: grey;"></div> </div> <p style="margin-left: 20px;">85% 10% 5%</p>

Continued on next page...

Continued from previous page...

Mol	Chain	Length	Quality of chain
5	F	443	
6	G	19	
7	H	27	
8	I	7	

2 Entry composition [i](#)

There are 12 unique types of molecules in this entry. The entry contains 29180 atoms, of which 0 are hydrogens and 0 are deuteriums.

In the tables below, the ZeroOcc column contains the number of atoms modelled with zero occupancy, the AltConf column contains the number of residues with at least one atom in alternate conformation and the Trace column contains the number of residues modelled with at most 2 atoms.

- Molecule 1 is a protein called DNA-directed RNA polymerase subunit alpha.

Mol	Chain	Residues	Atoms					ZeroOcc	AltConf	Trace
			Total	C	N	O	S			
1	A	231	Total 1809	C 1155	N 315	O 337	S 2	0	0	0
1	B	227	Total 1789	C 1143	N 310	O 334	S 2	0	0	0

- Molecule 2 is a protein called DNA-directed RNA polymerase subunit beta.

Mol	Chain	Residues	Atoms					ZeroOcc	AltConf	Trace
			Total	C	N	O	S			
2	C	1112	Total 8774	C 5550	N 1565	O 1635	S 24	0	0	0

- Molecule 3 is a protein called DNA-directed RNA polymerase subunit beta'.

Mol	Chain	Residues	Atoms					ZeroOcc	AltConf	Trace
			Total	C	N	O	S			
3	D	1485	Total 11739	C 7442	N 2069	O 2193	S 35	0	1	0

- Molecule 4 is a protein called DNA-directed RNA polymerase subunit omega.

Mol	Chain	Residues	Atoms					ZeroOcc	AltConf	Trace
			Total	C	N	O	S			
4	E	94	Total 758	C 483	N 132	O 139	S 4	0	0	0

- Molecule 5 is a protein called DNA directed RNA polymerase sigma factor A.

Mol	Chain	Residues	Atoms					ZeroOcc	AltConf	Trace
			Total	C	N	O	S			
5	F	346	Total 2807	C 1770	N 509	O 524	S 4	0	0	0

There are 20 discrepancies between the modelled and reference sequences:

Chain	Residue	Modelled	Actual	Comment	Reference
F	-19	MET	-	expression tag	UNP Q5SKW1
F	-18	GLY	-	expression tag	UNP Q5SKW1
F	-17	SER	-	expression tag	UNP Q5SKW1
F	-16	SER	-	expression tag	UNP Q5SKW1
F	-15	HIS	-	expression tag	UNP Q5SKW1
F	-14	HIS	-	expression tag	UNP Q5SKW1
F	-13	HIS	-	expression tag	UNP Q5SKW1
F	-12	HIS	-	expression tag	UNP Q5SKW1
F	-11	HIS	-	expression tag	UNP Q5SKW1
F	-10	HIS	-	expression tag	UNP Q5SKW1
F	-9	SER	-	expression tag	UNP Q5SKW1
F	-8	SER	-	expression tag	UNP Q5SKW1
F	-7	GLY	-	expression tag	UNP Q5SKW1
F	-6	LEU	-	expression tag	UNP Q5SKW1
F	-5	VAL	-	expression tag	UNP Q5SKW1
F	-4	PRO	-	expression tag	UNP Q5SKW1
F	-3	ARG	-	expression tag	UNP Q5SKW1
F	-2	GLY	-	expression tag	UNP Q5SKW1
F	-1	SER	-	expression tag	UNP Q5SKW1
F	0	HIS	-	expression tag	UNP Q5SKW1

- Molecule 6 is a DNA chain called 5'-D(*CP*CP*T*GP*CP*AP*TP*CP*CP*GP*TP*GP*AP*GP*TP*CP*GP*AP*G)-3'.

Mol	Chain	Residues	Atoms					ZeroOcc	AltConf	Trace
			Total	C	N	O	P			
6	G	16	328	156	63	94	15	0	0	0

- Molecule 7 is a DNA chain called 5'-D(*TP*AP*TP*AP*AP*TP*GP*GP*GP*AP*GP*C P*TP*GP*TP*CP*AP*CP*GP*GP*AP*TP*GP*CP*AP*GP*G)-3'.

Mol	Chain	Residues	Atoms					ZeroOcc	AltConf	Trace
			Total	C	N	O	P			
7	H	24	495	236	94	142	23	0	0	0

- Molecule 8 is a protein called GE23077.

Mol	Chain	Residues	Atoms				ZeroOcc	AltConf	Trace
			Total	C	N	O			
8	I	7	50	26	9	15	0	0	0

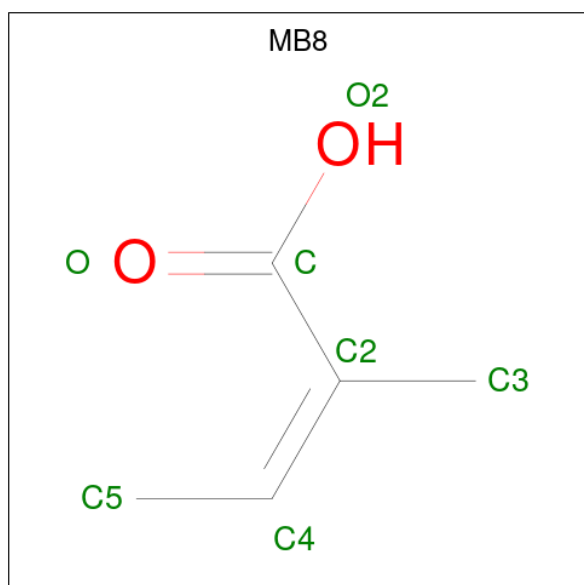
- Molecule 9 is MAGNESIUM ION (three-letter code: MG) (formula: Mg).

Mol	Chain	Residues	Atoms	ZeroOcc	AltConf
9	B	1	Total Mg 1 1	0	0
9	D	3	Total Mg 3 3	0	0
9	F	1	Total Mg 1 1	0	0

- Molecule 10 is ZINC ION (three-letter code: ZN) (formula: Zn).

Mol	Chain	Residues	Atoms	ZeroOcc	AltConf
10	D	2	Total Zn 2 2	0	0

- Molecule 11 is (2Z)-2-methylbut-2-enoic acid (three-letter code: MB8) (formula: C₅H₈O₂).



Mol	Chain	Residues	Atoms	ZeroOcc	AltConf
11	I	1	Total C O 2 1 1	0	0

- Molecule 12 is water.

Mol	Chain	Residues	Atoms	ZeroOcc	AltConf
12	A	27	Total O 27 27	0	0
12	B	25	Total O 25 25	0	0

Continued on next page...

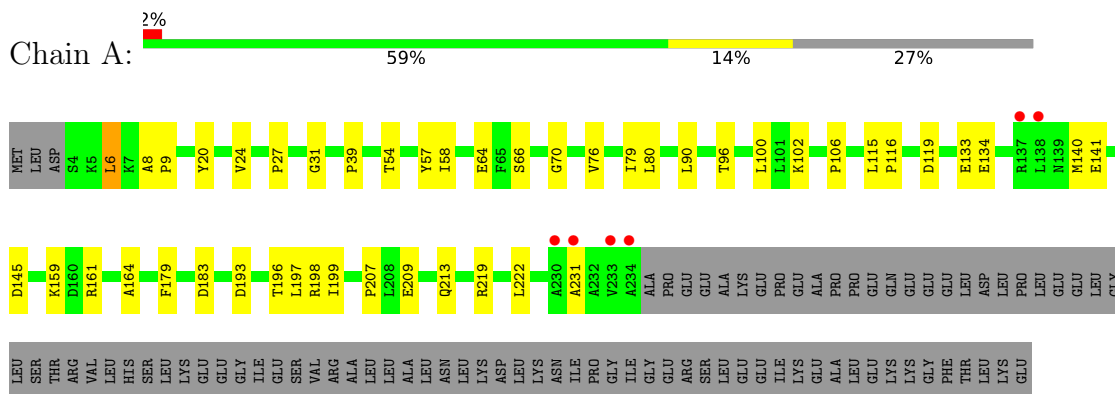
Continued from previous page...

Mol	Chain	Residues	Atoms		ZeroOcc	AltConf
12	C	221	Total 221	O 221	0	0
12	D	269	Total 269	O 269	0	0
12	E	22	Total 22	O 22	0	0
12	F	36	Total 36	O 36	0	0
12	G	10	Total 10	O 10	0	0
12	H	4	Total 4	O 4	0	0
12	I	8	Total 8	O 8	0	0

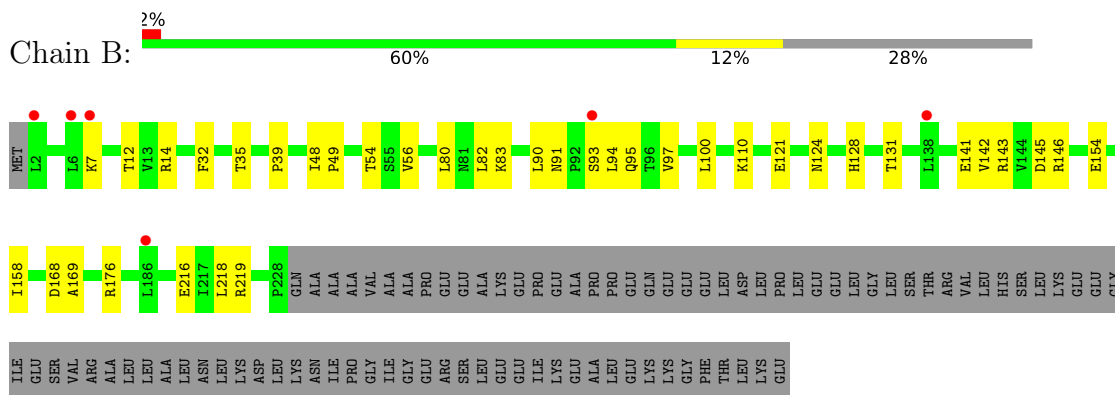
3 Residue-property plots i

These plots are drawn for all protein, RNA, DNA and oligosaccharide chains in the entry. The first graphic for a chain summarises the proportions of the various outlier classes displayed in the second graphic. The second graphic shows the sequence view annotated by issues in geometry and electron density. Residues are color-coded according to the number of geometric quality criteria for which they contain at least one outlier: green = 0, yellow = 1, orange = 2 and red = 3 or more. A red dot above a residue indicates a poor fit to the electron density ($RSRZ > 2$). Stretches of 2 or more consecutive residues without any outlier are shown as a green connector. Residues present in the sample, but not in the model, are shown in grey.

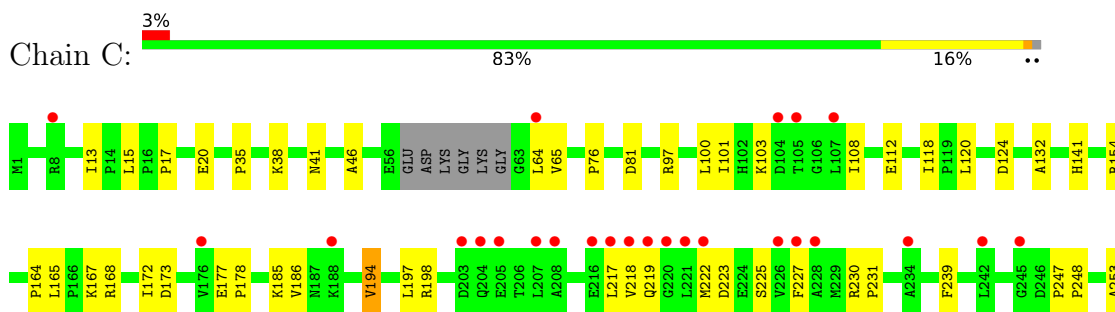
- Molecule 1: DNA-directed RNA polymerase subunit alpha



- Molecule 1: DNA-directed RNA polymerase subunit alpha



- Molecule 2: DNA-directed RNA polymerase subunit beta



- Molecule 8: GE23077

Chain I:  43% 29% 29%



4 Data and refinement statistics i

Property	Value	Source
Space group	C 1 2 1	Depositor
Cell constants a, b, c, α , β , γ	183.77Å 103.20Å 294.77Å 90.00° 99.18° 90.00°	Depositor
Resolution (Å)	48.50 – 2.80 48.84 – 2.80	Depositor EDS
% Data completeness (in resolution range)	98.0 (48.50-2.80) 98.1 (48.84-2.80)	Depositor EDS
R_{merge}	0.14	Depositor
R_{sym}	0.14	Depositor
$\langle I/\sigma(I) \rangle$ ¹	1.49 (at 2.81Å)	Xtrriage
Refinement program	PHENIX (phenix.refine: 1.8_1069)	Depositor
R, R_{free}	0.206 , 0.252 0.207 , 0.252	Depositor DCC
R_{free} test set	6582 reflections (5.00%)	wwPDB-VP
Wilson B-factor (Å ²)	47.8	Xtrriage
Anisotropy	0.026	Xtrriage
Bulk solvent k_{sol} (e/Å ³), B_{sol} (Å ²)	0.31 , 41.8	EDS
L-test for twinning ²	$\langle L \rangle = 0.47$, $\langle L^2 \rangle = 0.30$	Xtrriage
Estimated twinning fraction	0.019 for $1/2^*h-3/2^*k,-1/2^*h-1/2^*k,-1/2^*h+1/2^*k-1$ 0.017 for $1/2^*h+3/2^*k,1/2^*h-1/2^*k,-1/2^*h-1/2^*k-1$	Xtrriage
F_o, F_c correlation	0.91	EDS
Total number of atoms	29180	wwPDB-VP
Average B, all atoms (Å ²)	40.0	wwPDB-VP

Xtrriage's analysis on translational NCS is as follows: *The largest off-origin peak in the Patterson function is 3.16% of the height of the origin peak. No significant pseudotranslation is detected.*

¹Intensities estimated from amplitudes.

²Theoretical values of $\langle |L| \rangle$, $\langle L^2 \rangle$ for acentric reflections are 0.5, 0.333 respectively for untwinned datasets, and 0.375, 0.2 for perfectly twinned datasets.

5 Model quality [i](#)

5.1 Standard geometry [i](#)

Bond lengths and bond angles in the following residue types are not validated in this section: 2TL, ZN, MB8, MG, DVA, FGL, 0QZ, R2T, DSN, 2RA

The Z score for a bond length (or angle) is the number of standard deviations the observed value is removed from the expected value. A bond length (or angle) with $|Z| > 5$ is considered an outlier worth inspection. RMSZ is the root-mean-square of all Z scores of the bond lengths (or angles).

Mol	Chain	Bond lengths		Bond angles	
		RMSZ	# Z >5	RMSZ	# Z >5
1	A	0.24	0/1841	0.46	0/2504
1	B	0.22	0/1821	0.44	0/2476
2	C	0.24	0/8941	0.45	0/12092
3	D	0.24	0/11948	0.46	0/16153
4	E	0.24	0/772	0.41	0/1040
5	F	0.23	0/2852	0.39	0/3837
6	G	0.47	0/368	1.00	1/567 (0.2%)
7	H	0.45	0/556	1.04	0/858
All	All	0.25	0/29099	0.48	1/39527 (0.0%)

Chiral center outliers are detected by calculating the chiral volume of a chiral center and verifying if the center is modelled as a planar moiety or with the opposite hand. A planarity outlier is detected by checking planarity of atoms in a peptide group, atoms in a mainchain group or atoms of a sidechain that are expected to be planar.

Mol	Chain	#Chirality outliers	#Planarity outliers
8	I	0	1

There are no bond length outliers.

All (1) bond angle outliers are listed below:

Mol	Chain	Res	Type	Atoms	Z	Observed(°)	Ideal(°)
6	G	5	DC	O4'-C4'-C3'	-7.59	101.44	106.00

There are no chirality outliers.

All (1) planarity outliers are listed below:

Mol	Chain	Res	Type	Group
8	I	5	2TL	Peptide

5.2 Too-close contacts [i](#)

In the following table, the Non-H and H(model) columns list the number of non-hydrogen atoms and hydrogen atoms in the chain respectively. The H(added) column lists the number of hydrogen atoms added and optimized by MolProbity. The Clashes column lists the number of clashes within the asymmetric unit, whereas Symm-Clashes lists symmetry-related clashes.

Mol	Chain	Non-H	H(model)	H(added)	Clashes	Symm-Clashes
1	A	1809	0	1863	28	0
1	B	1789	0	1841	23	0
2	C	8774	0	8877	109	0
3	D	11739	0	11977	165	0
4	E	758	0	770	7	0
5	F	2807	0	2882	35	0
6	G	328	0	181	5	0
7	H	495	0	272	9	0
8	I	50	0	37	3	0
9	B	1	0	0	0	0
9	D	3	0	0	0	0
9	F	1	0	0	0	0
10	D	2	0	0	0	0
11	I	2	0	0	0	0
12	A	27	0	0	0	0
12	B	25	0	0	0	0
12	C	221	0	0	5	0
12	D	269	0	0	7	0
12	E	22	0	0	0	0
12	F	36	0	0	0	0
12	G	10	0	0	1	0
12	H	4	0	0	2	0
12	I	8	0	0	0	0
All	All	29180	0	28700	342	0

The all-atom clashscore is defined as the number of clashes found per 1000 atoms (including hydrogen atoms). The all-atom clashscore for this structure is 6.

All (342) close contacts within the same asymmetric unit are listed below, sorted by their clash magnitude.

Atom-1	Atom-2	Interatomic distance (Å)	Clash overlap (Å)
2:C:802:ARG:HB2	2:C:826:TYR:HB2	1.62	0.81
3:D:1254:GLN:HB3	3:D:1258:ARG:HB2	1.66	0.75
2:C:428:ARG:NH2	2:C:447:ALA:O	2.20	0.75
2:C:409:ARG:HH11	2:C:454:SER:HB2	1.53	0.74

Continued on next page...

Continued from previous page...

Atom-1	Atom-2	Interatomic distance (Å)	Clash overlap (Å)
2:C:758:ARG:HH21	2:C:788:THR:HB	1.53	0.74
2:C:165:LEU:HB2	2:C:168:ARG:HG3	1.68	0.73
5:F:361:LEU:HB3	5:F:365:GLU:HG3	1.73	0.70
3:D:266:GLU:HG3	3:D:314:PRO:HB3	1.73	0.70
2:C:628:PHE:H	2:C:638:ASP:HB3	1.58	0.69
6:G:4:DG:H1	7:H:24:DC:H42	1.40	0.69
3:D:272:LEU:HB2	3:D:280:ALA:HB3	1.75	0.68
7:H:2:DA:N7	12:H:102:HOH:O	2.25	0.68
2:C:674:VAL:HG12	2:C:869:VAL:HB	1.75	0.68
1:B:176:ARG:NH2	3:D:888:GLU:OE1	2.27	0.68
5:F:400:ILE:HA	5:F:403:LYS:HG2	1.76	0.67
3:D:65:ARG:NH1	5:F:378:GLY:O	2.27	0.67
3:D:208:PRO:HA	3:D:390:PRO:HA	1.77	0.67
2:C:709:GLU:OE2	2:C:824:ARG:NH1	2.29	0.66
2:C:230:ARG:HD3	2:C:231:PRO:HD2	1.78	0.66
3:D:356:PRO:HG2	3:D:359:ALA:HB2	1.77	0.65
2:C:670:GLN:HE21	2:C:700:TYR:H	1.42	0.65
2:C:936:VAL:HG11	2:C:959:PRO:HB2	1.79	0.65
3:D:717:GLN:NE2	12:D:2345:HOH:O	2.29	0.65
3:D:433:GLY:HA2	3:D:449:SER:H	1.62	0.65
3:D:534:ARG:NH2	5:F:313:GLU:O	2.31	0.64
3:D:318:ARG:NH1	3:D:338:GLU:OE1	2.30	0.64
2:C:1030:GLN:OE1	3:D:628:ARG:NH1	2.31	0.63
3:D:316:GLN:NE2	3:D:340:THR:O	2.31	0.63
2:C:172:ILE:HG12	2:C:186:VAL:HG22	1.80	0.63
3:D:711:LEU:HD13	3:D:778:LEU:HD23	1.80	0.63
5:F:365:GLU:HB2	5:F:404:ALA:HB2	1.81	0.63
3:D:1465:ASN:OD1	3:D:1470:ARG:NH1	2.31	0.62
3:D:895:VAL:HG11	3:D:922:LEU:HD21	1.81	0.62
3:D:356:PRO:HB3	3:D:441:ARG:HA	1.82	0.61
2:C:939:ARG:HG2	2:C:982:PRO:HD3	1.82	0.61
3:D:260:GLU:OE1	3:D:273:ARG:NH1	2.32	0.61
2:C:350:ARG:NH1	12:C:1466:HOH:O	2.32	0.61
3:D:959:GLU:OE1	3:D:959:GLU:N	2.30	0.61
1:A:231:ALA:HB2	1:B:12:THR:HG22	1.82	0.60
2:C:274:ARG:HD2	2:C:288:ARG:HG2	1.83	0.60
2:C:711:GLU:HG2	2:C:822:VAL:HG22	1.83	0.60
3:D:1432:LYS:O	3:D:1455:LYS:NZ	2.34	0.60
1:B:128:HIS:HE1	1:B:131:THR:HG23	1.66	0.60
1:B:216:GLU:OE1	1:B:219:ARG:NH2	2.32	0.60
3:D:1093:TYR:OH	3:D:1441:GLN:NE2	2.35	0.60

Continued on next page...

Continued from previous page...

Atom-1	Atom-2	Interatomic distance (Å)	Clash overlap (Å)
5:F:193:ARG:HB2	7:H:6:DT:H1'	1.84	0.60
1:B:80:LEU:HD21	3:D:842:VAL:HG12	1.82	0.59
3:D:206:ARG:NH2	5:F:101:GLU:OE2	2.35	0.59
3:D:1048:PRO:O	3:D:1079:LYS:NZ	2.34	0.59
1:B:100:LEU:HG	1:B:141:GLU:HG2	1.86	0.58
3:D:1133:ARG:NH1	12:D:2120:HOH:O	2.36	0.57
3:D:1495:ILE:HG12	4:E:88:GLU:HG3	1.86	0.57
1:B:94:LEU:O	1:B:146:ARG:NH2	2.36	0.57
3:D:167:GLU:OE2	3:D:198:ARG:NH1	2.37	0.57
2:C:168:ARG:HD3	2:C:268:ASP:HB3	1.87	0.57
3:D:45:PHE:O	3:D:86:ARG:NH2	2.37	0.57
3:D:207:PHE:HE2	5:F:98:GLU:HG2	1.69	0.57
3:D:1364:HIS:CE1	3:D:1366:LYS:HG3	2.40	0.56
1:A:106:PRO:HD3	1:A:134:GLU:HG2	1.88	0.56
2:C:628:PHE:H	2:C:638:ASP:CB	2.19	0.56
1:A:24:VAL:HG22	1:A:196:THR:HG23	1.88	0.56
2:C:164:PRO:HA	2:C:269:LEU:HD23	1.87	0.56
2:C:721:ARG:HH22	2:C:785:VAL:HG11	1.71	0.56
2:C:35:PRO:HG2	2:C:38:LYS:HD2	1.87	0.55
2:C:419:THR:HG22	2:C:422:ARG:HE	1.71	0.55
2:C:198:ARG:HE	2:C:227:PHE:HA	1.71	0.55
3:D:546:ARG:NH2	12:D:2252:HOH:O	2.38	0.55
3:D:561:GLY:HA3	5:F:132:ARG:HD3	1.89	0.55
1:A:222:LEU:HD21	1:B:218:LEU:HD23	1.88	0.55
1:B:56:VAL:HG22	1:B:142:VAL:HG12	1.87	0.55
1:B:128:HIS:CE1	1:B:131:THR:HG23	2.41	0.55
5:F:120:THR:HG22	5:F:122:LEU:HD13	1.87	0.55
3:D:474:GLU:HG3	3:D:496:LEU:HD11	1.88	0.55
1:B:93:SER:O	1:B:95:GLN:NE2	2.39	0.55
3:D:411:THR:HG23	3:D:436:GLU:HA	1.89	0.55
3:D:1042:ARG:HB3	3:D:1057:VAL:HB	1.88	0.55
1:A:39:PRO:HG3	1:B:39:PRO:HG3	1.88	0.54
3:D:1143:GLY:O	3:D:1147:ARG:HD2	2.06	0.54
2:C:939:ARG:NH2	12:C:1491:HOH:O	2.40	0.54
3:D:236:TYR:HB2	3:D:319:ALA:HB3	1.87	0.54
2:C:353:ARG:NH1	2:C:357:GLU:OE2	2.40	0.54
2:C:937:ASP:OD1	2:C:939:ARG:HD3	2.08	0.54
3:D:618:LEU:HG	3:D:1467:ILE:HG23	1.90	0.53
3:D:657:LEU:HG	3:D:661:MET:HE2	1.90	0.53
2:C:261:ILE:HG23	2:C:290:LEU:HB2	1.89	0.53
3:D:1324:PRO:HG3	3:D:1330:ILE:HD11	1.90	0.53

Continued on next page...

Continued from previous page...

Atom-1	Atom-2	Interatomic distance (Å)	Clash overlap (Å)
2:C:64:LEU:HB3	2:C:100:LEU:HD11	1.90	0.53
3:D:894:LYS:H	3:D:894:LYS:HD2	1.74	0.53
2:C:557:ARG:HD3	2:C:879:ARG:HB3	1.90	0.53
1:A:199:ILE:HB	1:A:207:PRO:HB3	1.91	0.52
2:C:598:GLU:O	2:C:651:LYS:NZ	2.35	0.52
3:D:137:PRO:HA	3:D:452:ILE:HG13	1.90	0.52
5:F:163:LEU:HD13	5:F:174:LEU:HD13	1.92	0.52
2:C:260:LEU:HB3	2:C:261:ILE:HD12	1.91	0.52
2:C:846:LYS:HZ1	8:I:4:R2T:HG2	1.73	0.52
3:D:1147:ARG:HD3	3:D:1188:VAL:HG11	1.91	0.52
6:G:4:DG:N2	6:G:5:DC:O2	2.41	0.52
3:D:684:LYS:O	3:D:687:VAL:HG12	2.09	0.52
2:C:217:LEU:HD12	2:C:217:LEU:H	1.73	0.52
2:C:223:ASP:OD1	2:C:225:SER:OG	2.24	0.52
3:D:67:ARG:HD2	5:F:379:ARG:HB3	1.92	0.52
5:F:397:ILE:HD12	5:F:400:ILE:HD11	1.90	0.52
3:D:200:ASP:O	3:D:397:LYS:HG2	2.10	0.52
3:D:67:ARG:HB3	5:F:377:ASP:O	2.09	0.52
3:D:321:GLN:HB2	3:D:336:PHE:HB2	1.92	0.52
3:D:658:LEU:HA	3:D:661:MET:HE3	1.92	0.52
1:A:58:ILE:HG12	1:A:140:MET:HG2	1.92	0.51
2:C:675:ALA:HB2	2:C:867:VAL:HG11	1.91	0.51
2:C:729:LEU:HD11	2:C:791:ARG:HH22	1.75	0.51
3:D:231:VAL:O	3:D:236:TYR:OH	2.28	0.51
2:C:281:LEU:HD13	2:C:305:PRO:HB2	1.93	0.51
3:D:1488:ASP:OD1	3:D:1488:ASP:N	2.31	0.51
1:A:70:GLY:N	2:C:607:ASP:OD1	2.42	0.51
3:D:1048:PRO:HG3	3:D:1075:HIS:ND1	2.25	0.51
3:D:101:HIS:HB3	3:D:104:PHE:HD2	1.75	0.51
3:D:890:VAL:HB	3:D:922:LEU:HD13	1.93	0.51
3:D:242:LEU:HB3	3:D:311:LEU:HD12	1.91	0.51
3:D:1045:MET:HG3	12:D:2221:HOH:O	2.11	0.51
3:D:1495:ILE:HD13	4:E:80:VAL:HG21	1.93	0.51
1:B:54:THR:OG1	1:B:145:ASP:OD1	2.27	0.51
3:D:411:THR:O	5:F:178:ARG:NH1	2.36	0.51
2:C:173:ASP:HB2	2:C:185:LYS:HB3	1.93	0.50
2:C:177:GLU:HG3	2:C:178:PRO:HD2	1.93	0.50
3:D:787:LEU:HD21	3:D:947:ILE:HG21	1.92	0.50
3:D:975:GLU:O	3:D:979:GLU:HG2	2.12	0.50
2:C:15:LEU:HD11	2:C:583:LEU:HD11	1.93	0.50
3:D:209:ARG:HE	3:D:391:ALA:HB2	1.74	0.50

Continued on next page...

Continued from previous page...

Atom-1	Atom-2	Interatomic distance (Å)	Clash overlap (Å)
3:D:1271:LYS:HE2	3:D:1331:ASP:HB2	1.93	0.50
5:F:160:ASP:O	5:F:164:LYS:HG2	2.12	0.49
2:C:610:ARG:HD3	2:C:612:VAL:HG23	1.92	0.49
3:D:181:ASP:HB2	3:D:205:TYR:CD1	2.47	0.49
3:D:1100:ASP:OD1	3:D:1463:LYS:NZ	2.37	0.49
3:D:1263:PHE:HD2	3:D:1375:MET:HE2	1.77	0.49
3:D:67:ARG:CZ	5:F:379:ARG:HD3	2.42	0.49
3:D:809:PRO:HB3	3:D:839:LEU:HD13	1.94	0.49
3:D:560:GLN:HE22	5:F:222:ARG:HH12	1.60	0.49
2:C:168:ARG:O	2:C:267:TYR:HA	2.13	0.49
2:C:167:LYS:HD3	7:H:12:DC:H5	1.78	0.49
2:C:405:ARG:NE	2:C:442:GLU:OE2	2.36	0.49
1:A:209:GLU:O	1:A:213:GLN:HG2	2.12	0.49
2:C:846:LYS:NZ	8:I:4:R2T:HG2	2.27	0.49
7:H:16:DC:H2''	7:H:17:DA:C8	2.47	0.49
3:D:274:ARG:NH2	3:D:279:VAL:HG21	2.27	0.49
3:D:508:ARG:HB2	3:D:511:TRP:CE2	2.48	0.49
3:D:155:ASP:OD1	3:D:159:ARG:NH1	2.46	0.49
1:B:54:THR:HG22	1:B:169:ALA:HB2	1.95	0.48
2:C:65:VAL:HG21	2:C:103:LYS:HE3	1.95	0.48
2:C:853:LEU:HB2	2:C:858:MET:HE1	1.95	0.48
2:C:874:LEU:O	3:D:1029:ARG:HG3	2.12	0.48
3:D:530:VAL:HG12	3:D:531:ASP:H	1.77	0.48
3:D:1114:THR:OG1	3:D:1195:GLN:NE2	2.45	0.48
3:D:207:PHE:CE2	5:F:98:GLU:HG2	2.47	0.48
7:H:18:DC:H2'	7:H:19:DG:C8	2.49	0.48
3:D:22:SER:HB2	3:D:92:HIS:HB3	1.94	0.48
3:D:1189:ARG:HB3	3:D:1204:CYS:HA	1.95	0.48
2:C:501:THR:HG22	12:C:1472:HOH:O	2.13	0.48
6:G:12:DG:N2	7:H:16:DC:O2	2.35	0.48
3:D:224:ARG:NE	3:D:254:GLU:OE2	2.36	0.48
3:D:1128:VAL:HG23	3:D:1130:ARG:H	1.79	0.48
5:F:131:VAL:HG13	5:F:178:ARG:HD3	1.95	0.48
1:A:64:GLU:HG2	1:A:76:VAL:HG22	1.95	0.48
3:D:124:GLU:OE2	3:D:587:ARG:NH2	2.47	0.47
2:C:343:GLN:HG3	2:C:385:PHE:HB2	1.95	0.47
3:D:57:GLU:HG3	3:D:64:LYS:HG2	1.96	0.47
2:C:540:PHE:HB3	2:C:544:THR:HB	1.95	0.47
3:D:137:PRO:HB3	3:D:147:VAL:HG12	1.96	0.47
1:B:90:LEU:HD21	1:B:121:GLU:HB2	1.97	0.47
2:C:541:SER:O	2:C:545:ASN:ND2	2.43	0.47

Continued on next page...

Continued from previous page...

Atom-1	Atom-2	Interatomic distance (Å)	Clash overlap (Å)
2:C:976:ASP:OD1	2:C:978:ARG:HG3	2.15	0.47
3:D:114:THR:HG23	3:D:495:ARG:HG2	1.97	0.47
3:D:192:ALA:HB3	3:D:195:VAL:HB	1.97	0.47
3:D:355:VAL:HG11	3:D:385:VAL:HG21	1.96	0.47
3:D:683:ILE:HD11	3:D:688:TRP:CZ2	2.50	0.47
3:D:658:LEU:HD11	3:D:674[A]:ARG:HH11	1.80	0.47
3:D:806:PHE:HB2	3:D:829:VAL:HG22	1.97	0.47
5:F:153:PRO:HA	5:F:156:VAL:HG22	1.96	0.47
3:D:272:LEU:O	3:D:279:VAL:N	2.47	0.46
5:F:84:TYR:O	5:F:88:ILE:HG12	2.15	0.46
3:D:1372:VAL:HA	3:D:1375:MET:HE3	1.96	0.46
5:F:135:ILE:HD11	5:F:178:ARG:HB3	1.96	0.46
2:C:299:LYS:HE2	2:C:299:LYS:HA	1.96	0.46
3:D:1044:LEU:HD23	3:D:1056:PRO:HB3	1.97	0.46
2:C:680:ASP:OD2	2:C:978:ARG:NH2	2.48	0.46
6:G:18:DA:N6	12:G:101:HOH:O	2.49	0.46
2:C:440:PRO:HB2	3:D:1074:SER:OG	2.15	0.46
1:A:8:ALA:HA	1:A:9:PRO:HD3	1.65	0.46
2:C:167:LYS:HD3	7:H:12:DC:C5	2.51	0.46
3:D:879:ARG:HD3	3:D:902:LEU:O	2.16	0.46
2:C:118:ILE:HD11	2:C:344:PHE:CE2	2.51	0.46
1:A:90:LEU:HB2	1:A:119:ASP:HB3	1.98	0.46
3:D:218:LYS:HG2	3:D:338:GLU:HG2	1.98	0.45
3:D:1122:LEU:HD13	3:D:1178:ALA:HB2	1.99	0.45
6:G:11:DT:H2"	6:G:12:DG:C8	2.52	0.45
3:D:30:GLU:OE1	3:D:40:GLU:HG2	2.17	0.45
3:D:158:TYR:CE1	3:D:454:ALA:HB3	2.51	0.45
2:C:1110:ASP:OD2	2:C:1114:GLY:N	2.39	0.45
1:A:100:LEU:HD22	1:A:141:GLU:HG2	1.98	0.45
1:B:110:LYS:HD3	1:B:128:HIS:HA	1.98	0.45
1:A:179:PHE:HB3	1:A:197:LEU:HD23	1.99	0.45
2:C:334:ARG:NH2	2:C:342:ASP:OD2	2.45	0.45
3:D:41:ARG:HE	3:D:48:ARG:CZ	2.30	0.45
3:D:353:VAL:HG11	3:D:387:LEU:HD11	1.98	0.45
3:D:560:GLN:NE2	5:F:222:ARG:HH12	2.14	0.45
1:B:32:PHE:HA	1:B:35:THR:HB	1.98	0.45
2:C:76:PRO:HG3	2:C:120:LEU:HD12	1.99	0.45
2:C:132:ALA:HB1	2:C:394:PHE:HE1	1.82	0.45
4:E:45:ARG:NH1	4:E:56:ASP:OD2	2.50	0.45
3:D:238:PRO:HG3	3:D:318:ARG:HB2	1.99	0.45
3:D:487:ALA:O	3:D:491:LYS:HG2	2.16	0.45

Continued on next page...

Continued from previous page...

Atom-1	Atom-2	Interatomic distance (Å)	Clash overlap (Å)
2:C:911:GLU:O	2:C:915:LYS:HG2	2.16	0.45
2:C:1038:TRP:CE2	3:D:1099:VAL:HG11	2.52	0.44
2:C:41:ASN:O	2:C:46:ALA:HB2	2.17	0.44
3:D:260:GLU:HB3	3:D:271:VAL:HB	2.00	0.44
1:A:54:THR:HG21	1:A:145:ASP:HB2	2.00	0.44
2:C:118:ILE:HD11	2:C:344:PHE:HE2	1.82	0.44
2:C:367:LEU:HD13	2:C:372:LEU:HD21	1.99	0.44
3:D:220:ARG:NH1	12:D:2339:HOH:O	2.51	0.44
3:D:1493:LYS:O	3:D:1497:GLU:HG2	2.16	0.44
5:F:109:GLY:O	5:F:113:ILE:HG13	2.17	0.44
3:D:1353:GLN:O	3:D:1357:ARG:HG3	2.17	0.44
5:F:362:SER:OG	5:F:365:GLU:HG2	2.18	0.44
1:A:64:GLU:HG3	1:A:79:ILE:HD12	1.99	0.44
1:B:48:ILE:HA	1:B:49:PRO:HD3	1.87	0.44
3:D:1253:THR:HG21	3:D:1359:GLN:HE22	1.83	0.44
3:D:1176:LYS:HB3	3:D:1176:LYS:HE2	1.79	0.44
2:C:247:PRO:HA	2:C:248:PRO:HD3	1.68	0.44
2:C:324:ASP:HB3	2:C:327:HIS:HB2	2.00	0.44
3:D:135:LEU:O	3:D:453:ASP:HB3	2.18	0.44
3:D:171:LEU:HA	3:D:172:PRO:HD2	1.89	0.44
1:A:6:LEU:HD11	1:A:27:PRO:HG2	1.99	0.43
1:A:159:LYS:HE3	1:A:164:ALA:O	2.17	0.43
1:A:183:ASP:HA	2:C:938:LYS:HE3	1.99	0.43
3:D:792:ILE:HG13	3:D:793:THR:HG23	2.00	0.43
3:D:1487:VAL:HG11	3:D:1492:LEU:HD13	2.00	0.43
3:D:1492:LEU:HD22	4:E:74:VAL:HG21	2.01	0.43
2:C:194:VAL:HA	2:C:197:LEU:HD12	2.00	0.43
3:D:84:ILE:O	3:D:87:ARG:HG2	2.18	0.43
2:C:617:ASP:HB2	2:C:619:ARG:HG2	2.00	0.43
2:C:708:TYR:HB3	2:C:790:LEU:HD21	2.00	0.43
2:C:97:ARG:HG2	2:C:112:GLU:HB2	2.00	0.43
3:D:176:ASP:OD1	3:D:177:ALA:N	2.44	0.43
1:A:57:TYR:CE1	1:A:161:ARG:HD2	2.53	0.43
4:E:14:ASP:OD2	4:E:18:ARG:NH1	2.50	0.43
2:C:563:ASN:HB3	8:I:7:FGL:OG1	2.19	0.43
2:C:499:ALA:HB2	2:C:533:ASP:HB2	2.00	0.43
3:D:317:VAL:HG23	3:D:339:TRP:HB3	2.00	0.43
2:C:1056:LYS:HE2	3:D:751:LEU:HG	2.00	0.43
3:D:1461:GLY:O	3:D:1465:ASN:ND2	2.50	0.43
2:C:101:ILE:HG12	2:C:108:ILE:HG12	2.01	0.43
3:D:12:LEU:HD21	3:D:104:PHE:CZ	2.54	0.43

Continued on next page...

Continued from previous page...

Atom-1	Atom-2	Interatomic distance (Å)	Clash overlap (Å)
3:D:1211:MET:HB2	3:D:1211:MET:HE3	1.90	0.43
1:B:94:LEU:HD11	1:B:97:VAL:HG22	2.01	0.42
2:C:954:THR:HA	2:C:955:PRO:HD3	1.91	0.42
3:D:81:THR:OG1	3:D:82:LYS:N	2.52	0.42
3:D:1108:ARG:NH2	3:D:1198:TYR:O	2.50	0.42
3:D:1373:ARG:HD3	12:D:2140:HOH:O	2.19	0.42
3:D:1402:ALA:O	3:D:1405:GLU:HG2	2.19	0.42
2:C:154:ARG:H	2:C:154:ARG:HG2	1.68	0.42
2:C:684:PHE:HB3	3:D:633:VAL:HG21	2.01	0.42
3:D:103:TRP:HB3	3:D:1448:THR:HG21	2.02	0.42
3:D:169:TYR:HA	3:D:170:PRO:HD3	1.73	0.42
3:D:372:ASP:HA	3:D:373:PRO:HD3	1.88	0.42
3:D:483:HIS:CG	3:D:484:PRO:HD2	2.54	0.42
1:A:115:LEU:HA	1:A:116:PRO:HD3	1.87	0.42
2:C:546:LEU:HB2	2:C:565:GLN:HE22	1.84	0.42
3:D:840:LYS:HE3	3:D:841:TYR:CZ	2.53	0.42
4:E:68:LEU:HD12	4:E:68:LEU:HA	1.77	0.42
2:C:1095:LEU:HD23	3:D:582:LEU:HD22	2.00	0.42
3:D:1031:ASN:O	3:D:1035:ILE:HG12	2.19	0.42
2:C:1092:LEU:HD13	2:C:1099:VAL:HG21	2.01	0.42
3:D:795:VAL:HG12	3:D:876:SER:HB3	2.00	0.42
3:D:796:ARG:NH1	3:D:862:ASP:OD2	2.47	0.42
1:A:57:TYR:CD1	1:A:161:ARG:HD2	2.55	0.42
2:C:218:VAL:O	2:C:222:MET:HG2	2.20	0.42
2:C:642:ARG:HD3	2:C:642:ARG:HA	1.87	0.42
3:D:131:LYS:NZ	3:D:154:THR:HG22	2.34	0.42
3:D:838:ARG:HD3	3:D:874:GLU:OE1	2.20	0.42
2:C:1043:TYR:CG	3:D:763:MET:HG2	2.55	0.42
3:D:801:GLY:HA3	3:D:821:VAL:HG13	2.01	0.42
3:D:1036:ARG:NH2	3:D:1042:ARG:O	2.52	0.42
3:D:1216:SER:N	12:D:2247:HOH:O	2.52	0.42
3:D:67:ARG:CD	5:F:379:ARG:HB3	2.49	0.42
5:F:285:GLU:HA	5:F:286:PRO:HD3	1.84	0.42
1:A:133:GLU:HG2	1:A:134:GLU:N	2.35	0.41
2:C:239:PHE:CD2	2:C:253:ALA:HA	2.54	0.41
3:D:1117:TYR:HB2	3:D:1188:VAL:O	2.20	0.41
1:B:83:LYS:HE2	1:B:168:ASP:HB2	2.02	0.41
3:D:455:ARG:HB2	3:D:460:ALA:HB2	2.02	0.41
2:C:545:ASN:HB3	2:C:583:LEU:HD22	2.02	0.41
2:C:766:GLU:HG3	3:D:64:LYS:HD3	2.02	0.41
3:D:517:VAL:HA	3:D:518:PRO:HD3	1.95	0.41

Continued on next page...

Continued from previous page...

Atom-1	Atom-2	Interatomic distance (Å)	Clash overlap (Å)
7:H:13:DT:O4	12:H:104:HOH:O	2.21	0.41
2:C:13:ILE:HD13	2:C:483:VAL:HG11	2.03	0.41
2:C:408:ARG:NH1	2:C:456:ALA:O	2.53	0.41
3:D:644:LEU:HD12	3:D:645:PRO:HD2	2.02	0.41
3:D:704:ARG:HB2	3:D:745:MET:HG2	2.03	0.41
5:F:321:ILE:O	5:F:327:SER:HB3	2.20	0.41
1:B:56:VAL:HG21	1:B:82:LEU:HD13	2.02	0.41
1:B:124:ASN:OD1	1:B:124:ASN:N	2.53	0.41
2:C:486:MET:HB3	2:C:490:GLU:HB3	2.01	0.41
2:C:536:PRO:HB3	3:D:1067:VAL:HG21	2.03	0.41
2:C:942:GLU:HG3	2:C:945:ARG:HH21	1.85	0.41
3:D:707:THR:HG23	3:D:712:GLY:HA3	2.01	0.41
3:D:889:ALA:HB1	3:D:930:LEU:HA	2.02	0.41
1:A:196:THR:HG21	2:C:934:PHE:HE2	1.86	0.41
2:C:124:ASP:HB3	2:C:592:LEU:HD12	2.02	0.41
3:D:185:VAL:N	3:D:201:GLY:O	2.45	0.41
3:D:192:ALA:HB1	3:D:193:PRO:HD2	2.02	0.41
5:F:208:SER:HB3	5:F:211:ASP:OD2	2.20	0.41
1:A:80:LEU:HD23	1:A:80:LEU:HA	1.95	0.41
2:C:409:ARG:HD2	12:C:1339:HOH:O	2.20	0.41
5:F:88:ILE:CG2	5:F:193:ARG:HG2	2.50	0.41
5:F:162:LYS:O	5:F:165:SER:OG	2.33	0.41
1:A:102:LYS:HE3	1:A:102:LYS:HB2	1.75	0.41
2:C:571:LEU:HD23	2:C:702:SER:HB3	2.03	0.41
2:C:749:VAL:HB	2:C:792:VAL:HG21	2.03	0.41
2:C:944:LEU:HD23	2:C:944:LEU:HA	1.97	0.41
3:D:50:PHE:CD2	3:D:522:PRO:HD3	2.55	0.41
3:D:171:LEU:HD11	3:D:393:ILE:HD11	2.03	0.41
3:D:760:ARG:O	3:D:764:LEU:HB2	2.21	0.41
2:C:1054:THR:OG1	2:C:1055:LEU:N	2.53	0.41
3:D:639:LEU:HA	3:D:729:HIS:CD2	2.56	0.41
5:F:373:LYS:HA	5:F:373:LYS:HD3	1.93	0.41
1:B:143:ARG:NH1	1:B:158:ILE:HD12	2.36	0.40
3:D:403:PHE:CD2	3:D:444:VAL:HG23	2.56	0.40
3:D:613:ARG:HG3	3:D:618:LEU:HD22	2.04	0.40
3:D:34:TYR:CZ	3:D:35:ARG:HG3	2.56	0.40
5:F:408:LEU:HD23	5:F:408:LEU:HA	1.89	0.40
2:C:265:ARG:NH1	12:C:1417:HOH:O	2.55	0.40
2:C:853:LEU:HB2	2:C:858:MET:CE	2.50	0.40
3:D:226:PRO:HD3	3:D:249:TYR:CE2	2.56	0.40
3:D:843:PHE:HE1	3:D:864:VAL:HG21	1.86	0.40

Continued on next page...

Continued from previous page...

Atom-1	Atom-2	Interatomic distance (Å)	Clash overlap (Å)
3:D:907:GLU:HB2	3:D:1026:SER:HA	2.03	0.40
3:D:1366:LYS:O	3:D:1370:ILE:HG12	2.21	0.40
1:A:20:TYR:OH	1:A:198:ARG:HD2	2.21	0.40
2:C:17:PRO:HB2	2:C:20:GLU:HB3	2.02	0.40
2:C:1090:LYS:HA	2:C:1090:LYS:HD3	1.79	0.40
4:E:3:GLU:HA	4:E:4:PRO:HD3	1.96	0.40
1:A:31:GLY:N	1:A:193:ASP:OD1	2.53	0.40
2:C:704:HIS:CD2	2:C:831:ARG:HD2	2.57	0.40
3:D:58:CYS:HB2	3:D:76:CYS:SG	2.62	0.40
5:F:135:ILE:HG13	5:F:181:GLU:HB2	2.03	0.40

There are no symmetry-related clashes.

5.3 Torsion angles

5.3.1 Protein backbone

In the following table, the Percentiles column shows the percent Ramachandran outliers of the chain as a percentile score with respect to all X-ray entries followed by that with respect to entries of similar resolution.

The Analysed column shows the number of residues for which the backbone conformation was analysed, and the total number of residues.

Mol	Chain	Analysed	Favoured	Allowed	Outliers	Percentiles	
1	A	229/315 (73%)	226 (99%)	3 (1%)	0	100	100
1	B	225/315 (71%)	222 (99%)	3 (1%)	0	100	100
2	C	1108/1119 (99%)	1088 (98%)	20 (2%)	0	100	100
3	D	1482/1524 (97%)	1451 (98%)	31 (2%)	0	100	100
4	E	92/99 (93%)	89 (97%)	3 (3%)	0	100	100
5	F	344/443 (78%)	340 (99%)	4 (1%)	0	100	100
All	All	3480/3815 (91%)	3416 (98%)	64 (2%)	0	100	100

There are no Ramachandran outliers to report.

5.3.2 Protein sidechains [i](#)

In the following table, the Percentiles column shows the percent sidechain outliers of the chain as a percentile score with respect to all X-ray entries followed by that with respect to entries of similar resolution.

The Analysed column shows the number of residues for which the sidechain conformation was analysed, and the total number of residues.

Mol	Chain	Analysed	Rotameric	Outliers	Percentiles	
1	A	200/273 (73%)	196 (98%)	4 (2%)	55	84
1	B	200/273 (73%)	196 (98%)	4 (2%)	55	84
2	C	936/941 (100%)	915 (98%)	21 (2%)	52	83
3	D	1253/1279 (98%)	1232 (98%)	21 (2%)	60	87
4	E	82/88 (93%)	82 (100%)	0	100	100
5	F	301/388 (78%)	297 (99%)	4 (1%)	69	91
All	All	2972/3242 (92%)	2918 (98%)	54 (2%)	59	86

All (54) residues with a non-rotameric sidechain are listed below:

Mol	Chain	Res	Type
1	A	6	LEU
1	A	66	SER
1	A	96	THR
1	A	219	ARG
1	B	7	LYS
1	B	14	ARG
1	B	91	ASN
1	B	154	GLU
2	C	81	ASP
2	C	141	HIS
2	C	194	VAL
2	C	219	GLN
2	C	285	LEU
2	C	299	LYS
2	C	360	LEU
2	C	397	GLU
2	C	405	ARG
2	C	464	LEU
2	C	513	VAL
2	C	557	ARG
2	C	595	LEU
2	C	610	ARG

Continued on next page...

Continued from previous page...

Mol	Chain	Res	Type
2	C	617	ASP
2	C	640	ARG
2	C	698	ASP
2	C	728	HIS
2	C	729	LEU
2	C	848	VAL
2	C	1078	GLU
3	D	67	ARG
3	D	87	ARG
3	D	134	VAL
3	D	276	ASP
3	D	354	VAL
3	D	406	ASP
3	D	415	VAL
3	D	420	VAL
3	D	530	VAL
3	D	618	LEU
3	D	632	VAL
3	D	683	ILE
3	D	709	HIS
3	D	754	PHE
3	D	784	ASP
3	D	907	GLU
3	D	1288	GLU
3	D	1307	LYS
3	D	1433	SER
3	D	1455	LYS
3	D	1488	ASP
5	F	95	THR
5	F	141	VAL
5	F	279	GLN
5	F	369	LEU

Sometimes sidechains can be flipped to improve hydrogen bonding and reduce clashes. All (18) such sidechains are listed below:

Mol	Chain	Res	Type
1	A	95	GLN
2	C	390	GLN
2	C	506	ASN
2	C	670	GLN
2	C	860	HIS
2	C	1047	HIS

Continued on next page...

Continued from previous page...

Mol	Chain	Res	Type
3	D	66	GLN
3	D	316	GLN
3	D	560	GLN
3	D	696	HIS
3	D	709	HIS
3	D	855	HIS
3	D	976	GLN
3	D	1124	GLN
3	D	1195	GLN
3	D	1359	GLN
3	D	1441	GLN
5	F	83	GLN

5.3.3 RNA [i](#)

There are no RNA molecules in this entry.

5.4 Non-standard residues in protein, DNA, RNA chains [i](#)

7 non-standard protein/DNA/RNA residues are modelled in this entry.

In the following table, the Counts columns list the number of bonds (or angles) for which Mogul statistics could be retrieved, the number of bonds (or angles) that are observed in the model and the number of bonds (or angles) that are defined in the Chemical Component Dictionary. The Link column lists molecule types, if any, to which the group is linked. The Z score for a bond length (or angle) is the number of standard deviations the observed value is removed from the expected value. A bond length (or angle) with $|Z| > 2$ is considered an outlier worth inspection. RMSZ is the root-mean-square of all Z scores of the bond lengths (or angles).

Mol	Type	Chain	Res	Link	Bond lengths			Bond angles		
					Counts	RMSZ	$\# Z > 2$	Counts	RMSZ	$\# Z > 2$
8	2RA	I	1	8,11	3,5,6	0.54	0	1,5,7	0.39	0
8	0QZ	I	6	8	4,5,6	1.65	1 (25%)	2,5,7	0.66	0
8	2TL	I	5	8	5,6,7	1.04	0	6,7,9	0.91	1 (16%)
8	R2T	I	4	8	8,10,11	1.88	2 (25%)	6,13,15	0.90	0
8	FGL	I	7	8	5,6,7	1.03	0	1,7,9	1.98	0

In the following table, the Chirals column lists the number of chiral outliers, the number of chiral centers analysed, the number of these observed in the model and the number defined in the Chemical Component Dictionary. Similar counts are reported in the Torsion and Rings columns. '-' means no outliers of that kind were identified.

Mol	Type	Chain	Res	Link	Chirals	Torsions	Rings
8	2RA	I	1	8,11	-	0/2/4/6	-
8	0QZ	I	6	8	-	1/3/4/6	-
8	2TL	I	5	8	-	1/5/6/8	-
8	R2T	I	4	8	-	7/13/14/16	-
8	FGL	I	7	8	-	0/4/6/8	-

All (3) bond length outliers are listed below:

Mol	Chain	Res	Type	Atoms	Z	Observed(Å)	Ideal(Å)
8	I	4	R2T	CD-NE2	4.20	1.43	1.32
8	I	6	0QZ	OB-CA	-3.15	1.37	1.43
8	I	4	R2T	OB1-CB	-2.34	1.37	1.43

All (1) bond angle outliers are listed below:

Mol	Chain	Res	Type	Atoms	Z	Observed(°)	Ideal(°)
8	I	5	2TL	O-C-CA	-2.03	119.45	124.78

There are no chirality outliers.

All (9) torsion outliers are listed below:

Mol	Chain	Res	Type	Atoms
8	I	4	R2T	CA-CB-CG-OG1
8	I	4	R2T	OB1-CB-CG-CD
8	I	4	R2T	OB1-CB-CG-OG1
8	I	4	R2T	OE1-CD-CG-OG1
8	I	4	R2T	NE2-CD-CG-OG1
8	I	6	0QZ	N-C1-CA-C
8	I	4	R2T	CA-CB-CG-CD
8	I	4	R2T	O-C-CA-CB
8	I	5	2TL	O-C-CA-CB

There are no ring outliers.

2 monomers are involved in 3 short contacts:

Mol	Chain	Res	Type	Clashes	Symm-Clashes
8	I	4	R2T	2	0
8	I	7	FGL	1	0

5.5 Carbohydrates [i](#)

There are no monosaccharides in this entry.

5.6 Ligand geometry [i](#)

Of 8 ligands modelled in this entry, 7 are monoatomic - leaving 1 for Mogul analysis.

In the following table, the Counts columns list the number of bonds (or angles) for which Mogul statistics could be retrieved, the number of bonds (or angles) that are observed in the model and the number of bonds (or angles) that are defined in the Chemical Component Dictionary. The Link column lists molecule types, if any, to which the group is linked. The Z score for a bond length (or angle) is the number of standard deviations the observed value is removed from the expected value. A bond length (or angle) with $|Z| > 2$ is considered an outlier worth inspection. RMSZ is the root-mean-square of all Z scores of the bond lengths (or angles).

Mol	Type	Chain	Res	Link	Bond lengths			Bond angles		
					Counts	RMSZ	$\# Z > 2$	Counts	RMSZ	$\# Z > 2$
11	MB8	I	101	8	0,1,6	-	-	-		

There are no bond length outliers.

There are no bond angle outliers.

There are no chirality outliers.

There are no torsion outliers.

There are no ring outliers.

No monomer is involved in short contacts.

5.7 Other polymers [i](#)

There are no such residues in this entry.

5.8 Polymer linkage issues [i](#)

There are no chain breaks in this entry.

6 Fit of model and data

6.1 Protein, DNA and RNA chains

In the following table, the column labelled ‘#RSRZ > 2’ contains the number (and percentage) of RSRZ outliers, followed by percent RSRZ outliers for the chain as percentile scores relative to all X-ray entries and entries of similar resolution. The OWAB column contains the minimum, median, 95th percentile and maximum values of the occupancy-weighted average B-factor per residue. The column labelled ‘Q < 0.9’ lists the number of (and percentage) of residues with an average occupancy less than 0.9.

Mol	Chain	Analysed	<RSRZ>	#RSRZ>2	OWAB(Å ²)	Q<0.9
1	A	231/315 (73%)	-0.12	6 (2%) 56 46	16, 33, 61, 102	0
1	B	227/315 (72%)	0.05	6 (2%) 56 46	21, 43, 78, 108	0
2	C	1112/1119 (99%)	-0.07	34 (3%) 49 39	4, 25, 84, 113	0
3	D	1485/1524 (97%)	0.17	105 (7%) 16 9	2, 33, 94, 121	0
4	E	94/99 (94%)	-0.29	0 100 100	7, 28, 63, 73	0
5	F	346/443 (78%)	0.12	13 (3%) 40 30	14, 47, 87, 113	0
6	G	16/19 (84%)	0.62	3 (18%) 1 1	44, 77, 145, 154	0
7	H	24/27 (88%)	0.34	3 (12%) 3 2	43, 83, 136, 156	0
8	I	0/7	-	-	-	-
All	All	3535/3868 (91%)	0.05	170 (4%) 30 21	2, 34, 89, 156	0

All (170) RSRZ outliers are listed below:

Mol	Chain	Res	Type	RSRZ
3	D	1499	ARG	5.6
3	D	191	LEU	5.4
2	C	207	LEU	5.1
3	D	422	ALA	4.9
2	C	365	ASP	4.9
3	D	241	ILE	4.7
3	D	185	VAL	4.3
1	B	6	LEU	4.3
2	C	203	ASP	4.3
3	D	1287	GLU	4.3
3	D	173	PRO	4.2
2	C	219	GLN	4.1
3	D	409	VAL	4.1
2	C	221	LEU	4.0
3	D	393	ILE	4.0

Continued on next page...

Continued from previous page...

Mol	Chain	Res	Type	RSRZ
2	C	222	MET	3.9
3	D	144	GLY	3.8
3	D	178	LEU	3.8
3	D	242	LEU	3.8
3	D	174	GLY	3.8
3	D	201	GLY	3.7
3	D	345	TYR	3.7
2	C	217	LEU	3.7
3	D	1130	ARG	3.7
2	C	208	ALA	3.6
3	D	196	VAL	3.6
2	C	227	PHE	3.6
3	D	68	PHE	3.6
3	D	974	ILE	3.5
3	D	186	VAL	3.4
2	C	228	ALA	3.4
3	D	447	VAL	3.4
3	D	1408	ILE	3.4
2	C	218	VAL	3.4
1	A	234	ALA	3.3
5	F	422	LEU	3.3
3	D	432	TYR	3.3
3	D	406	ASP	3.2
1	B	2	LEU	3.2
2	C	107	LEU	3.2
2	C	778	PHE	3.2
3	D	312	ARG	3.2
2	C	64	LEU	3.2
7	H	23	DG	3.1
3	D	449	SER	3.1
3	D	203	ALA	3.1
3	D	488	ARG	3.1
3	D	322	VAL	3.0
3	D	310	LEU	3.0
3	D	212	ARG	3.0
1	A	137	ARG	3.0
3	D	211	VAL	3.0
3	D	1299	PHE	3.0
3	D	385	VAL	3.0
2	C	729	LEU	2.9
3	D	395	VAL	2.9
3	D	360	ARG	2.9

Continued on next page...

Continued from previous page...

Mol	Chain	Res	Type	RSRZ
3	D	175	VAL	2.9
3	D	387	LEU	2.9
2	C	205	GLU	2.8
3	D	202	VAL	2.8
3	D	368	VAL	2.8
6	G	5	DC	2.8
3	D	401	TYR	2.8
3	D	195	VAL	2.8
3	D	205	TYR	2.8
3	D	971	LEU	2.8
3	D	213	VAL	2.8
3	D	67	ARG	2.7
5	F	415	THR	2.7
3	D	427	VAL	2.7
3	D	1298	GLY	2.7
3	D	978	TYR	2.7
3	D	343	LYS	2.7
3	D	384	VAL	2.7
2	C	648	ARG	2.7
3	D	1297	GLU	2.6
5	F	416	ARG	2.6
1	B	138	LEU	2.6
3	D	448	GLU	2.6
3	D	320	ALA	2.6
2	C	766	GLU	2.6
3	D	176	ASP	2.6
5	F	149	GLU	2.6
3	D	1305	LEU	2.6
2	C	254	VAL	2.6
3	D	236	TYR	2.6
3	D	799	LYS	2.6
3	D	142	LEU	2.5
5	F	174	LEU	2.5
1	A	231	ALA	2.5
3	D	209	ARG	2.5
5	F	169	GLU	2.5
2	C	105	THR	2.5
3	D	805	GLU	2.5
5	F	414	ARG	2.5
3	D	1409	ALA	2.5
3	D	367	ILE	2.5
2	C	311	PHE	2.4

Continued on next page...

Continued from previous page...

Mol	Chain	Res	Type	RSRZ
3	D	63	TYR	2.4
2	C	216	GLU	2.4
3	D	1127	GLU	2.4
3	D	371	ILE	2.4
3	D	1253	THR	2.4
3	D	1294	VAL	2.4
3	D	976	GLN	2.4
5	F	420	ASP	2.4
3	D	1281	VAL	2.4
3	D	372	ASP	2.4
7	H	24	DC	2.4
2	C	772	ARG	2.4
5	F	147	LEU	2.3
3	D	309	GLY	2.3
3	D	830	ALA	2.3
1	B	186	LEU	2.3
2	C	242	LEU	2.3
3	D	1495	ILE	2.3
3	D	443	VAL	2.3
5	F	411	HIS	2.3
2	C	188	LYS	2.3
2	C	226	VAL	2.3
1	A	138	LEU	2.3
3	D	235	ALA	2.3
3	D	804	LEU	2.3
3	D	983	LEU	2.3
3	D	1292	VAL	2.3
3	D	177	ALA	2.3
5	F	379	ARG	2.3
2	C	245	GLY	2.2
3	D	230	TRP	2.2
3	D	1500	LYS	2.2
3	D	69	GLU	2.2
2	C	234	ALA	2.2
3	D	428	LYS	2.2
3	D	1300	SER	2.2
3	D	1414	PRO	2.2
3	D	973	GLN	2.2
5	F	156	VAL	2.2
1	A	230	ALA	2.2
1	A	233	VAL	2.2
3	D	228	ALA	2.2

Continued on next page...

Continued from previous page...

Mol	Chain	Res	Type	RSRZ
3	D	821	VAL	2.2
2	C	220	GLY	2.2
6	G	6	DA	2.2
3	D	1283	ILE	2.2
2	C	204	GLN	2.2
2	C	176	VAL	2.2
2	C	104	ASP	2.2
3	D	321	GLN	2.1
3	D	667	ALA	2.1
3	D	993	LEU	2.1
5	F	233	PHE	2.1
1	B	93	SER	2.1
3	D	1497	GLU	2.1
3	D	80	VAL	2.1
1	B	7	LYS	2.1
3	D	410	SER	2.1
3	D	1128	VAL	2.1
3	D	318	ARG	2.1
6	G	7	DT	2.1
3	D	399	ARG	2.1
3	D	172	PRO	2.1
2	C	595	LEU	2.1
3	D	350	HIS	2.1
3	D	980	MET	2.1
3	D	829	VAL	2.0
3	D	668	PRO	2.0
2	C	8	ARG	2.0
3	D	225	LEU	2.0
7	H	22	DT	2.0

6.2 Non-standard residues in protein, DNA, RNA chains [i](#)

In the following table, the Atoms column lists the number of modelled atoms in the group and the number defined in the chemical component dictionary. The B-factors column lists the minimum, median, 95th percentile and maximum values of B factors of atoms in the group. The column labelled 'Q< 0.9' lists the number of atoms with occupancy less than 0.9.

Mol	Type	Chain	Res	Atoms	RSCC	RSR	B-factors(Å ²)	Q<0.9
8	2RA	I	1	6/7	0.92	0.17	8,10,16,18	0
8	FGL	I	7	7/8	0.97	0.13	8,9,10,11	0
8	DSN	I	2	6/7	0.97	0.15	7,9,15,15	0
8	2TL	I	5	7/8	0.97	0.17	6,7,8,9	0

Continued on next page...

Continued from previous page...

Mol	Type	Chain	Res	Atoms	RSCC	RSR	B-factors(\AA^2)	Q<0.9
8	R2T	I	4	11/12	0.98	0.15	7,8,9,11	0
8	DVA	I	3	7/8	0.98	0.17	8,9,13,13	0
8	0QZ	I	6	6/7	0.98	0.18	7,7,10,11	0

6.3 Carbohydrates [i](#)

There are no monosaccharides in this entry.

6.4 Ligands [i](#)

In the following table, the Atoms column lists the number of modelled atoms in the group and the number defined in the chemical component dictionary. The B-factors column lists the minimum, median, 95th percentile and maximum values of B factors of atoms in the group. The column labelled 'Q< 0.9' lists the number of atoms with occupancy less than 0.9.

Mol	Type	Chain	Res	Atoms	RSCC	RSR	B-factors(\AA^2)	Q<0.9
9	MG	B	2001	1/1	0.82	0.25	50,50,50,50	0
9	MG	D	2005	1/1	0.83	0.10	31,31,31,31	0
9	MG	F	2001	1/1	0.95	0.10	22,22,22,22	0
11	MB8	I	101	2/7	0.95	0.15	6,6,6,11	0
9	MG	D	2004	1/1	0.96	0.08	31,31,31,31	0
9	MG	D	2003	1/1	0.97	0.17	5,5,5,5	0
10	ZN	D	2002	1/1	0.98	0.05	56,56,56,56	0
10	ZN	D	2001	1/1	1.00	0.13	10,10,10,10	0

6.5 Other polymers [i](#)

There are no such residues in this entry.