



Full wwPDB X-ray Structure Validation Report ⓘ

Feb 19, 2024 – 01:32 PM EST

PDB ID : 4KF2
Title : Structure of the P4509 BM3 A82F F87V heme domain
Authors : Leys, D.
Deposited on : 2013-04-26
Resolution : 1.82 Å(reported)

This is a Full wwPDB X-ray Structure Validation Report for a publicly released PDB entry.

We welcome your comments at validation@mail.wwpdb.org

A user guide is available at

<https://www.wwpdb.org/validation/2017/XrayValidationReportHelp>

with specific help available everywhere you see the ⓘ symbol.

The types of validation reports are described at

<http://www.wwpdb.org/validation/2017/FAQs#types>.

The following versions of software and data (see [references ⓘ](#)) were used in the production of this report:

MolProbity : 4.02b-467
Mogul : 1.8.5 (274361), CSD as541be (2020)
Xtriage (Phenix) : 1.13
EDS : 2.36
buster-report : 1.1.7 (2018)
Percentile statistics : 20191225.v01 (using entries in the PDB archive December 25th 2019)
Refmac : 5.8.0158
CCP4 : 7.0.044 (Gargrove)
Ideal geometry (proteins) : Engh & Huber (2001)
Ideal geometry (DNA, RNA) : Parkinson et al. (1996)
Validation Pipeline (wwPDB-VP) : 2.36

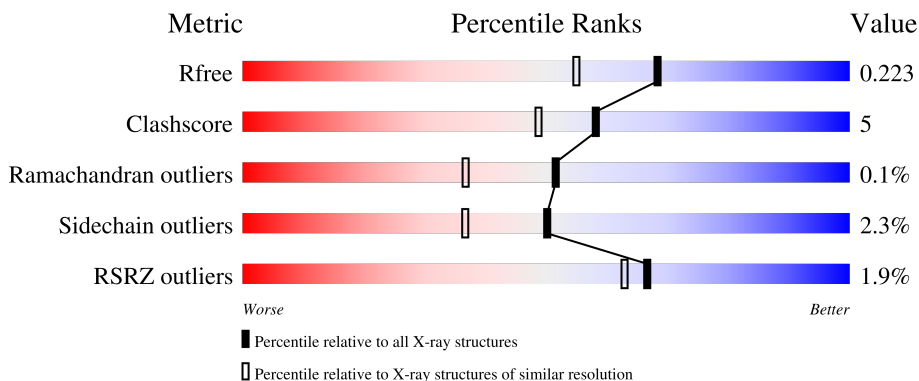
1 Overall quality at a glance

The following experimental techniques were used to determine the structure:

X-RAY DIFFRACTION

The reported resolution of this entry is 1.82 Å.

Percentile scores (ranging between 0-100) for global validation metrics of the entry are shown in the following graphic. The table shows the number of entries on which the scores are based.



Metric	Whole archive (#Entries)	Similar resolution (#Entries, resolution range(Å))
R_{free}	130704	7484 (1.84-1.80)
Clashscore	141614	8401 (1.84-1.80)
Ramachandran outliers	138981	8290 (1.84-1.80)
Sidechain outliers	138945	8290 (1.84-1.80)
RSRZ outliers	127900	7371 (1.84-1.80)

The table below summarises the geometric issues observed across the polymeric chains and their fit to the electron density. The red, orange, yellow and green segments of the lower bar indicate the fraction of residues that contain outliers for ≥ 3 , 2, 1 and 0 types of geometric quality criteria respectively. A grey segment represents the fraction of residues that are not modelled. The numeric value for each fraction is indicated below the corresponding segment, with a dot representing fractions $\leq 5\%$. The upper red bar (where present) indicates the fraction of residues that have poor fit to the electron density. The numeric value is given above the bar.

Mol	Chain	Length	Quality of chain
1	A	457	 2% 89% 9% ..
1	B	457	 2% 86% 10% ..

2 Entry composition [i](#)

There are 4 unique types of molecules in this entry. The entry contains 8228 atoms, of which 0 are hydrogens and 0 are deuteriums.

In the tables below, the ZeroOcc column contains the number of atoms modelled with zero occupancy, the AltConf column contains the number of residues with at least one atom in alternate conformation and the Trace column contains the number of residues modelled with at most 2 atoms.

- Molecule 1 is a protein called Bifunctional P-450/NADPH-P450 reductase.

Mol	Chain	Residues	Atoms					ZeroOcc	AltConf	Trace
			Total	C	N	O	S			
1	A	451	Total 3655	C 2336	N 620	O 680	S 19	0	5	0
1	B	448	Total 3653	C 2336	N 621	O 679	S 17	0	6	0

There are 4 discrepancies between the modelled and reference sequences:

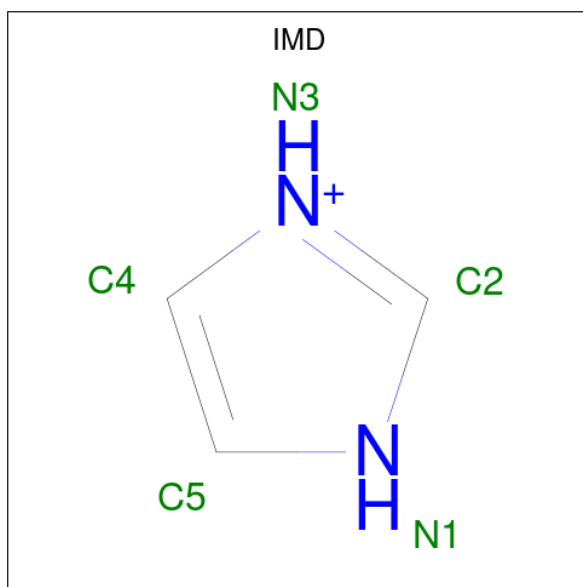
Chain	Residue	Modelled	Actual	Comment	Reference
A	82	PHE	ALA	engineered mutation	UNP P14779
A	87	VAL	PHE	engineered mutation	UNP P14779
B	82	PHE	ALA	engineered mutation	UNP P14779
B	87	VAL	PHE	engineered mutation	UNP P14779

- Molecule 2 is PROTOPORPHYRIN IX CONTAINING FE (three-letter code: HEM) (formula: $C_{34}H_{32}FeN_4O_4$).



Mol	Chain	Residues	Atoms				ZeroOcc	AltConf	
2	A	1	Total	C	Fe	N	O	0	0
			43	34	1	4	4		
2	B	1	Total	C	Fe	N	O	0	0
			43	34	1	4	4		

- Molecule 3 is IMIDAZOLE (three-letter code: IMD) (formula: C₃H₅N₂).



Mol	Chain	Residues	Atoms		ZeroOcc	AltConf
3	A	1	Total	C N	0	0
			5	3 2		
3	B	1	Total	C N	0	0
			5	3 2		

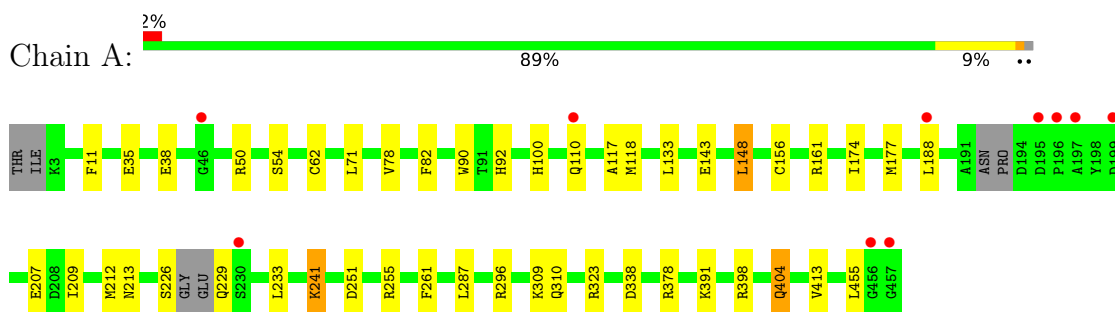
- Molecule 4 is water.

Mol	Chain	Residues	Atoms		ZeroOcc	AltConf
4	A	420	Total	O	0	0
			420	420		
4	B	404	Total	O	0	0
			404	404		

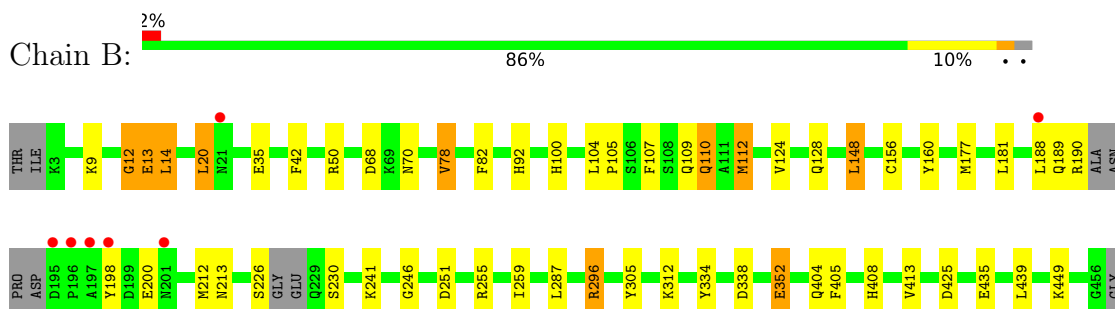
3 Residue-property plots [i](#)

These plots are drawn for all protein, RNA, DNA and oligosaccharide chains in the entry. The first graphic for a chain summarises the proportions of the various outlier classes displayed in the second graphic. The second graphic shows the sequence view annotated by issues in geometry and electron density. Residues are color-coded according to the number of geometric quality criteria for which they contain at least one outlier: green = 0, yellow = 1, orange = 2 and red = 3 or more. A red dot above a residue indicates a poor fit to the electron density ($RSRZ > 2$). Stretches of 2 or more consecutive residues without any outlier are shown as a green connector. Residues present in the sample, but not in the model, are shown in grey.

- Molecule 1: Bifunctional P-450/NADPH-P450 reductase



- Molecule 1: Bifunctional P-450/NADPH-P450 reductase



4 Data and refinement statistics

Property	Value	Source
Space group	P 1 21 1	Depositor
Cell constants a, b, c, α , β , γ	59.27Å 151.67Å 60.80Å 90.00° 95.89° 90.00°	Depositor
Resolution (Å)	47.00 – 1.82 47.28 – 1.82	Depositor EDS
% Data completeness (in resolution range)	100.0 (47.00-1.82) 99.1 (47.28-1.82)	Depositor EDS
R_{merge}	0.07	Depositor
R_{sym}	(Not available)	Depositor
$\langle I/\sigma(I) \rangle$ ¹	2.89 (at 1.82Å)	Xtrriage
Refinement program	REFMAC 5.5.0102	Depositor
R, R_{free}	0.183 , 0.225 0.183 , 0.223	Depositor DCC
R_{free} test set	4752 reflections (5.01%)	wwPDB-VP
Wilson B-factor (Å ²)	27.1	Xtrriage
Anisotropy	0.056	Xtrriage
Bulk solvent k_{sol} (e/Å ³), B_{sol} (Å ²)	0.34 , 41.4	EDS
L-test for twinning ²	$\langle L \rangle = 0.48$, $\langle L^2 \rangle = 0.31$	Xtrriage
Estimated twinning fraction	0.027 for l,-k,h	Xtrriage
F_o, F_c correlation	0.96	EDS
Total number of atoms	8228	wwPDB-VP
Average B, all atoms (Å ²)	28.0	wwPDB-VP

Xtrriage's analysis on translational NCS is as follows: *The largest off-origin peak in the Patterson function is 4.69% of the height of the origin peak. No significant pseudotranslation is detected.*

¹Intensities estimated from amplitudes.

²Theoretical values of $\langle |L| \rangle$, $\langle L^2 \rangle$ for acentric reflections are 0.5, 0.333 respectively for untwinned datasets, and 0.375, 0.2 for perfectly twinned datasets.

5 Model quality [i](#)

5.1 Standard geometry [i](#)

Bond lengths and bond angles in the following residue types are not validated in this section: IMD, HEM

The Z score for a bond length (or angle) is the number of standard deviations the observed value is removed from the expected value. A bond length (or angle) with $|Z| > 5$ is considered an outlier worth inspection. RMSZ is the root-mean-square of all Z scores of the bond lengths (or angles).

Mol	Chain	Bond lengths		Bond angles	
		RMSZ	# Z >5	RMSZ	# Z >5
1	A	1.24	11/3740 (0.3%)	1.04	9/5052 (0.2%)
1	B	1.19	6/3739 (0.2%)	0.98	9/5052 (0.2%)
All	All	1.21	17/7479 (0.2%)	1.01	18/10104 (0.2%)

Chiral center outliers are detected by calculating the chiral volume of a chiral center and verifying if the center is modelled as a planar moiety or with the opposite hand. A planarity outlier is detected by checking planarity of atoms in a peptide group, atoms in a mainchain group or atoms of a sidechain that are expected to be planar.

Mol	Chain	#Chirality outliers	#Planarity outliers
1	B	0	1

All (17) bond length outliers are listed below:

Mol	Chain	Res	Type	Atoms	Z	Observed(Å)	Ideal(Å)
1	A	378	ARG	CB-CG	-7.12	1.33	1.52
1	A	404	GLN	CG-CD	6.58	1.66	1.51
1	A	117	ALA	CA-CB	6.38	1.65	1.52
1	A	11	PHE	CE1-CZ	6.36	1.49	1.37
1	A	90	TRP	CE3-CZ3	-6.32	1.27	1.38
1	A	35	GLU	CG-CD	5.75	1.60	1.51
1	A	404	GLN	CB-CG	5.72	1.68	1.52
1	B	352[A]	GLU	CG-CD	5.66	1.60	1.51
1	B	352[B]	GLU	CG-CD	5.66	1.60	1.51
1	A	143	GLU	CG-CD	5.61	1.60	1.51
1	A	241	LYS	CE-NZ	5.60	1.63	1.49
1	B	50	ARG	CZ-NH1	5.47	1.40	1.33
1	B	156	CYS	CB-SG	-5.40	1.73	1.81
1	B	160	TYR	CD1-CE1	5.33	1.47	1.39
1	B	305	TYR	CD2-CE2	5.25	1.47	1.39
1	A	207	GLU	CG-CD	5.11	1.59	1.51

Continued on next page...

Continued from previous page...

Mol	Chain	Res	Type	Atoms	Z	Observed(Å)	Ideal(Å)
1	A	241	LYS	CD-CE	5.05	1.63	1.51

All (18) bond angle outliers are listed below:

Mol	Chain	Res	Type	Atoms	Z	Observed(°)	Ideal(°)
1	A	398	ARG	NE-CZ-NH1	8.52	124.56	120.30
1	B	425	ASP	CB-CG-OD1	8.45	125.90	118.30
1	A	338	ASP	CB-CG-OD1	7.03	124.63	118.30
1	B	112	MET	CG-SD-CE	-7.01	88.98	100.20
1	A	50	ARG	NE-CZ-NH2	-7.00	116.80	120.30
1	B	338	ASP	CB-CG-OD1	6.98	124.58	118.30
1	B	50	ARG	NE-CZ-NH2	-6.82	116.89	120.30
1	B	251	ASP	CB-CG-OD1	6.80	124.42	118.30
1	A	296	ARG	NE-CZ-NH2	-6.79	116.90	120.30
1	A	71	LEU	CB-CG-CD2	6.18	121.50	111.00
1	B	50	ARG	NE-CZ-NH1	6.08	123.34	120.30
1	A	323	ARG	NE-CZ-NH2	-6.00	117.30	120.30
1	A	378	ARG	NE-CZ-NH1	5.98	123.29	120.30
1	B	251	ASP	CB-CG-OD2	-5.81	113.07	118.30
1	B	296	ARG	NE-CZ-NH1	5.66	123.13	120.30
1	A	161	ARG	NE-CZ-NH1	5.59	123.09	120.30
1	A	251	ASP	CB-CG-OD1	5.34	123.11	118.30
1	B	107	PHE	CB-CG-CD1	-5.20	117.16	120.80

There are no chirality outliers.

All (1) planarity outliers are listed below:

Mol	Chain	Res	Type	Group
1	B	12	GLY	Peptide

5.2 Too-close contacts [i](#)

In the following table, the Non-H and H(model) columns list the number of non-hydrogen atoms and hydrogen atoms in the chain respectively. The H(added) column lists the number of hydrogen atoms added and optimized by MolProbity. The Clashes column lists the number of clashes within the asymmetric unit, whereas Symm-Clashes lists symmetry-related clashes.

Mol	Chain	Non-H	H(model)	H(added)	Clashes	Symm-Clashes
1	A	3655	0	3618	23	0
1	B	3653	0	3608	48	0
2	A	43	0	30	0	0

Continued on next page...

Continued from previous page...

Mol	Chain	Non-H	H(model)	H(added)	Clashes	Symm-Clashes
2	B	43	0	30	0	0
3	A	5	0	4	0	0
3	B	5	0	4	0	0
4	A	420	0	0	8	0
4	B	404	0	0	7	0
All	All	8228	0	7294	71	0

The all-atom clashscore is defined as the number of clashes found per 1000 atoms (including hydrogen atoms). The all-atom clashscore for this structure is 5.

All (71) close contacts within the same asymmetric unit are listed below, sorted by their clash magnitude.

Atom-1	Atom-2	Interatomic distance (Å)	Clash overlap (Å)
1:B:177:MET:SD	1:B:212:MET:HE1	1.79	1.20
1:B:110:GLN:O	1:B:110:GLN:NE2	1.90	1.02
1:B:128:GLN:HG2	4:B:761:HOH:O	1.65	0.97
1:B:177:MET:SD	1:B:212:MET:CE	2.53	0.96
1:B:110:GLN:HE21	1:B:110:GLN:C	1.74	0.91
1:B:177:MET:HE2	1:B:181:LEU:HD11	1.59	0.82
1:A:78:VAL:HG13	1:A:82:PHE:CD2	2.17	0.78
1:A:78:VAL:HG13	1:A:82:PHE:HD2	1.50	0.77
1:B:12:GLY:HA3	1:B:14:LEU:H	1.53	0.74
1:A:209:ILE:HD13	1:A:212:MET:CE	2.17	0.73
1:A:100:HIS:HD2	4:A:638:HOH:O	1.72	0.73
1:A:92:HIS:HD2	4:A:726:HOH:O	1.74	0.71
1:B:177:MET:HB2	1:B:212:MET:CE	2.22	0.69
1:B:213:ASN:HD22	1:B:255:ARG:HH21	1.41	0.69
1:A:229:GLN:CB	4:A:1005:HOH:O	2.40	0.68
1:B:110:GLN:HG2	4:B:657:HOH:O	1.94	0.65
1:B:177:MET:CB	1:B:212:MET:HE1	2.27	0.65
1:A:209:ILE:HD13	1:A:212:MET:HE3	1.80	0.63
1:A:177:MET:HE2	1:A:212:MET:SD	2.37	0.63
1:A:148:LEU:HD21	1:A:413:VAL:HG21	1.79	0.63
1:B:12:GLY:CA	1:B:14:LEU:H	2.12	0.62
1:B:100:HIS:HD2	4:B:624:HOH:O	1.81	0.62
1:B:200:GLU:HA	1:B:200:GLU:OE1	2.00	0.62
1:B:177:MET:HB2	1:B:212:MET:HE3	1.82	0.61
1:B:312:LYS:HB2	4:B:665:HOH:O	2.00	0.61
1:B:112:MET:HE1	1:B:405:PHE:HA	1.83	0.60
1:A:213:ASN:HD22	1:A:255:ARG:HH21	1.50	0.60
1:B:78:VAL:HG22	1:B:82:PHE:CE2	2.37	0.59

Continued on next page...

Continued from previous page...

Atom-1	Atom-2	Interatomic distance (Å)	Clash overlap (Å)
1:A:177:MET:CE	1:A:212:MET:SD	2.91	0.59
1:B:109:GLN:HB2	1:B:404:GLN:HE22	1.66	0.59
1:B:241:LYS:HD3	1:B:246:GLY:O	2.03	0.59
1:B:177:MET:HB2	1:B:212:MET:HE1	1.86	0.57
1:A:118[B]:MET:HE3	1:A:156:CYS:HA	1.87	0.56
1:A:118[B]:MET:CE	1:A:156:CYS:HA	2.35	0.56
1:A:62:CYS:SG	1:A:391:LYS:HE2	2.46	0.55
1:B:189:GLN:HG3	4:B:710:HOH:O	2.08	0.53
1:B:213:ASN:ND2	1:B:255:ARG:HH21	2.05	0.53
1:B:177:MET:HE2	1:B:181:LEU:CD1	2.35	0.52
1:B:435:GLU:HG2	1:B:439:LEU:CD2	2.41	0.51
1:B:177:MET:HE3	1:B:181:LEU:HG	1.92	0.50
1:B:112:MET:HE2	1:B:408:HIS:HB2	1.94	0.50
1:A:310:GLN:HG2	4:A:716:HOH:O	2.10	0.50
1:B:296:ARG:NH2	4:B:934:HOH:O	2.41	0.50
1:B:112:MET:CE	1:B:408:HIS:CB	2.89	0.50
1:B:92:HIS:H	1:B:92:HIS:CD2	2.30	0.49
1:A:309:LYS:NZ	1:A:404:GLN:HE21	2.10	0.49
1:B:20:LEU:HD22	1:B:42:PHE:CZ	2.48	0.48
1:A:233:LEU:HD21	1:A:261:PHE:CD2	2.48	0.48
1:B:104:LEU:N	1:B:105:PRO:CD	2.77	0.47
1:B:68[B]:ASP:HB3	1:B:334:TYR:CE1	2.50	0.47
1:B:78:VAL:HG22	1:B:82:PHE:HE2	1.79	0.46
1:B:104:LEU:HB3	1:B:105:PRO:HD3	1.97	0.46
1:B:177:MET:CG	1:B:212:MET:HE1	2.44	0.46
1:B:70:ASN:HD21	1:B:352[A]:GLU:CD	2.19	0.46
1:A:133:LEU:HD12	4:A:991:HOH:O	2.16	0.46
1:B:226:SER:C	4:B:621:HOH:O	2.55	0.44
1:B:78:VAL:HG13	1:B:82:PHE:HD2	1.82	0.43
1:A:241:LYS:CE	4:A:964:HOH:O	2.66	0.43
1:B:112:MET:CE	1:B:408:HIS:HB3	2.49	0.43
1:A:38:GLU:HB2	1:A:54:SER:HB3	2.00	0.43
1:A:309:LYS:HZ1	1:A:404:GLN:HE21	1.67	0.43
1:B:148:LEU:HD21	1:B:413:VAL:HG21	2.00	0.42
1:B:124:VAL:O	1:B:128:GLN:HG3	2.20	0.42
1:B:177:MET:SD	1:B:212:MET:HE2	2.51	0.42
1:B:190:ARG:HD2	1:B:198:TYR:CE2	2.55	0.42
1:A:241:LYS:HE2	4:A:964:HOH:O	2.18	0.41
1:B:82:PHE:CD1	1:B:259[A]:ILE:HG22	2.55	0.41
1:A:174:ILE:HD13	1:A:174:ILE:HA	1.80	0.41
1:B:190:ARG:HD2	1:B:198:TYR:CZ	2.56	0.41

Continued on next page...

Continued from previous page...

Atom-1	Atom-2	Interatomic distance (Å)	Clash overlap (Å)
4:A:699:HOH:O	1:B:100:HIS:HE1	2.03	0.40
1:B:200:GLU:OE1	1:B:200:GLU:CA	2.69	0.40

There are no symmetry-related clashes.

5.3 Torsion angles [i](#)

5.3.1 Protein backbone [i](#)

In the following table, the Percentiles column shows the percent Ramachandran outliers of the chain as a percentile score with respect to all X-ray entries followed by that with respect to entries of similar resolution.

The Analysed column shows the number of residues for which the backbone conformation was analysed, and the total number of residues.

Mol	Chain	Analysed	Favoured	Allowed	Outliers	Percentiles	
1	A	450/457 (98%)	435 (97%)	15 (3%)	0	100	100
1	B	448/457 (98%)	432 (96%)	15 (3%)	1 (0%)	47	33
All	All	898/914 (98%)	867 (96%)	30 (3%)	1 (0%)	51	37

All (1) Ramachandran outliers are listed below:

Mol	Chain	Res	Type
1	B	13	GLU

5.3.2 Protein sidechains [i](#)

In the following table, the Percentiles column shows the percent sidechain outliers of the chain as a percentile score with respect to all X-ray entries followed by that with respect to entries of similar resolution.

The Analysed column shows the number of residues for which the sidechain conformation was analysed, and the total number of residues.

Mol	Chain	Analysed	Rotameric	Outliers	Percentiles	
1	A	396/400 (99%)	390 (98%)	6 (2%)	65	55
1	B	396/400 (99%)	384 (97%)	12 (3%)	41	26
All	All	792/800 (99%)	774 (98%)	18 (2%)	50	37

All (18) residues with a non-rotameric sidechain are listed below:

Mol	Chain	Res	Type
1	A	110	GLN
1	A	148	LEU
1	A	188	LEU
1	A	226	SER
1	A	287	LEU
1	A	455	LEU
1	B	9	LYS
1	B	13	GLU
1	B	14	LEU
1	B	20	LEU
1	B	35	GLU
1	B	78	VAL
1	B	110	GLN
1	B	148	LEU
1	B	188	LEU
1	B	230	SER
1	B	287	LEU
1	B	449	LYS

Sometimes sidechains can be flipped to improve hydrogen bonding and reduce clashes. All (13) such sidechains are listed below:

Mol	Chain	Res	Type
1	A	92	HIS
1	A	100	HIS
1	A	213	ASN
1	A	239	ASN
1	A	404	GLN
1	B	70	ASN
1	B	92	HIS
1	B	100	HIS
1	B	109	GLN
1	B	110	GLN
1	B	204	GLN
1	B	213	ASN
1	B	404	GLN

5.3.3 RNA [i](#)

There are no RNA molecules in this entry.

5.4 Non-standard residues in protein, DNA, RNA chains [i](#)

There are no non-standard protein/DNA/RNA residues in this entry.

5.5 Carbohydrates [i](#)

There are no monosaccharides in this entry.

5.6 Ligand geometry [i](#)

4 ligands are modelled in this entry.

In the following table, the Counts columns list the number of bonds (or angles) for which Mogul statistics could be retrieved, the number of bonds (or angles) that are observed in the model and the number of bonds (or angles) that are defined in the Chemical Component Dictionary. The Link column lists molecule types, if any, to which the group is linked. The Z score for a bond length (or angle) is the number of standard deviations the observed value is removed from the expected value. A bond length (or angle) with $|Z| > 2$ is considered an outlier worth inspection. RMSZ is the root-mean-square of all Z scores of the bond lengths (or angles).

Mol	Type	Chain	Res	Link	Bond lengths			Bond angles		
					Counts	RMSZ	# Z > 2	Counts	RMSZ	# Z > 2
3	IMD	B	502	2	3,5,5	0.96	0	4,5,5	0.84	0
2	HEM	B	501	1,3	41,50,50	2.01	11 (26%)	45,82,82	2.09	12 (26%)
2	HEM	A	501	1,3	41,50,50	2.08	17 (41%)	45,82,82	3.40	17 (37%)
3	IMD	A	502	2	3,5,5	0.59	0	4,5,5	2.29	2 (50%)

In the following table, the Chirals column lists the number of chiral outliers, the number of chiral centers analysed, the number of these observed in the model and the number defined in the Chemical Component Dictionary. Similar counts are reported in the Torsion and Rings columns. '-' means no outliers of that kind were identified.

Mol	Type	Chain	Res	Link	Chirals	Torsions	Rings
3	IMD	B	502	2	-	-	0/1/1/1
2	HEM	B	501	1,3	-	1/12/54/54	-
2	HEM	A	501	1,3	-	2/12/54/54	-
3	IMD	A	502	2	-	-	0/1/1/1

All (28) bond length outliers are listed below:

Mol	Chain	Res	Type	Atoms	Z	Observed(Å)	Ideal(Å)
2	A	501	HEM	C3D-C2D	5.67	1.48	1.36
2	B	501	HEM	C3D-C2D	5.28	1.48	1.36

Continued on next page...

Continued from previous page...

Mol	Chain	Res	Type	Atoms	Z	Observed(Å)	Ideal(Å)
2	B	501	HEM	CMA-C3A	4.58	1.61	1.51
2	B	501	HEM	C3C-C2C	-4.20	1.34	1.40
2	A	501	HEM	CMB-C2B	3.95	1.59	1.50
2	B	501	HEM	C3C-CAC	3.91	1.55	1.47
2	A	501	HEM	C1A-NA	3.25	1.42	1.36
2	A	501	HEM	C3C-CAC	3.23	1.54	1.47
2	B	501	HEM	CMD-C2D	3.05	1.57	1.50
2	A	501	HEM	CAB-C3B	2.95	1.55	1.47
2	A	501	HEM	C3C-C2C	-2.94	1.36	1.40
2	A	501	HEM	C3B-C4B	2.72	1.50	1.44
2	B	501	HEM	CMB-C2B	2.71	1.56	1.50
2	A	501	HEM	CMD-C2D	2.65	1.56	1.50
2	B	501	HEM	C1A-CHA	-2.64	1.33	1.41
2	B	501	HEM	CHB-C1B	2.62	1.41	1.35
2	A	501	HEM	C4D-C3D	2.62	1.49	1.45
2	A	501	HEM	CHD-C1D	-2.56	1.33	1.41
2	A	501	HEM	FE-ND	2.51	2.09	1.96
2	B	501	HEM	C4B-NB	-2.47	1.33	1.38
2	A	501	HEM	CAA-C2A	2.43	1.55	1.52
2	B	501	HEM	CHD-C1D	-2.34	1.34	1.41
2	B	501	HEM	O1D-CGD	2.27	1.29	1.22
2	A	501	HEM	FE-NB	2.22	2.07	1.96
2	A	501	HEM	C4D-ND	-2.20	1.36	1.40
2	A	501	HEM	CHC-C4B	-2.12	1.34	1.41
2	A	501	HEM	CBD-CGD	2.11	1.55	1.50
2	A	501	HEM	CMA-C3A	2.04	1.55	1.51

All (31) bond angle outliers are listed below:

Mol	Chain	Res	Type	Atoms	Z	Observed(°)	Ideal(°)
2	A	501	HEM	C1B-NB-C4B	10.32	115.73	105.07
2	A	501	HEM	C4D-ND-C1D	9.62	115.01	105.07
2	A	501	HEM	CHC-C4B-NB	8.31	133.46	124.43
2	A	501	HEM	CHD-C1D-ND	7.47	132.55	124.43
2	B	501	HEM	C1B-NB-C4B	6.10	111.38	105.07
2	A	501	HEM	C4C-CHD-C1D	5.52	129.85	122.56
2	A	501	HEM	C2B-C1B-NB	-5.28	103.58	109.84
2	B	501	HEM	C4C-CHD-C1D	5.05	129.22	122.56
2	A	501	HEM	C4B-C3B-C2B	4.97	111.06	107.11
2	A	501	HEM	CHB-C1B-NB	4.82	130.33	124.38
2	B	501	HEM	CHB-C1B-NB	4.54	129.99	124.38
2	B	501	HEM	C4D-ND-C1D	3.69	108.88	105.07

Continued on next page...

Continued from previous page...

Mol	Chain	Res	Type	Atoms	Z	Observed(°)	Ideal(°)
2	A	501	HEM	C2D-C1D-ND	-3.63	105.53	109.88
2	B	501	HEM	C2B-C1B-NB	-3.61	105.57	109.84
3	A	502	IMD	C5-N1-C2	-3.60	95.00	105.91
2	A	501	HEM	C3D-C4D-ND	-3.42	106.36	110.17
2	B	501	HEM	CMD-C2D-C1D	3.31	130.08	125.04
2	B	501	HEM	CBA-CAA-C2A	-3.00	107.51	112.62
2	A	501	HEM	CMA-C3A-C4A	-2.90	124.01	128.46
2	A	501	HEM	CBD-CAD-C3D	-2.78	104.90	112.63
2	A	501	HEM	CMD-C2D-C1D	2.59	128.99	125.04
2	B	501	HEM	CMA-C3A-C4A	-2.57	124.52	128.46
2	B	501	HEM	CHD-C1D-ND	2.44	127.08	124.43
2	B	501	HEM	C4D-C3D-C2D	-2.41	103.38	106.90
2	A	501	HEM	CHA-C4D-ND	2.32	127.25	124.38
2	B	501	HEM	CAD-CBD-CGD	-2.27	108.71	113.60
2	A	501	HEM	CHD-C1D-C2D	-2.21	121.53	124.98
3	A	502	IMD	C4-C5-N1	2.15	117.76	108.74
2	A	501	HEM	CMC-C2C-C3C	2.10	128.60	124.68
2	B	501	HEM	O2A-CGA-CBA	2.08	120.71	114.03
2	A	501	HEM	C4A-C3A-C2A	2.02	108.40	107.00

There are no chirality outliers.

All (3) torsion outliers are listed below:

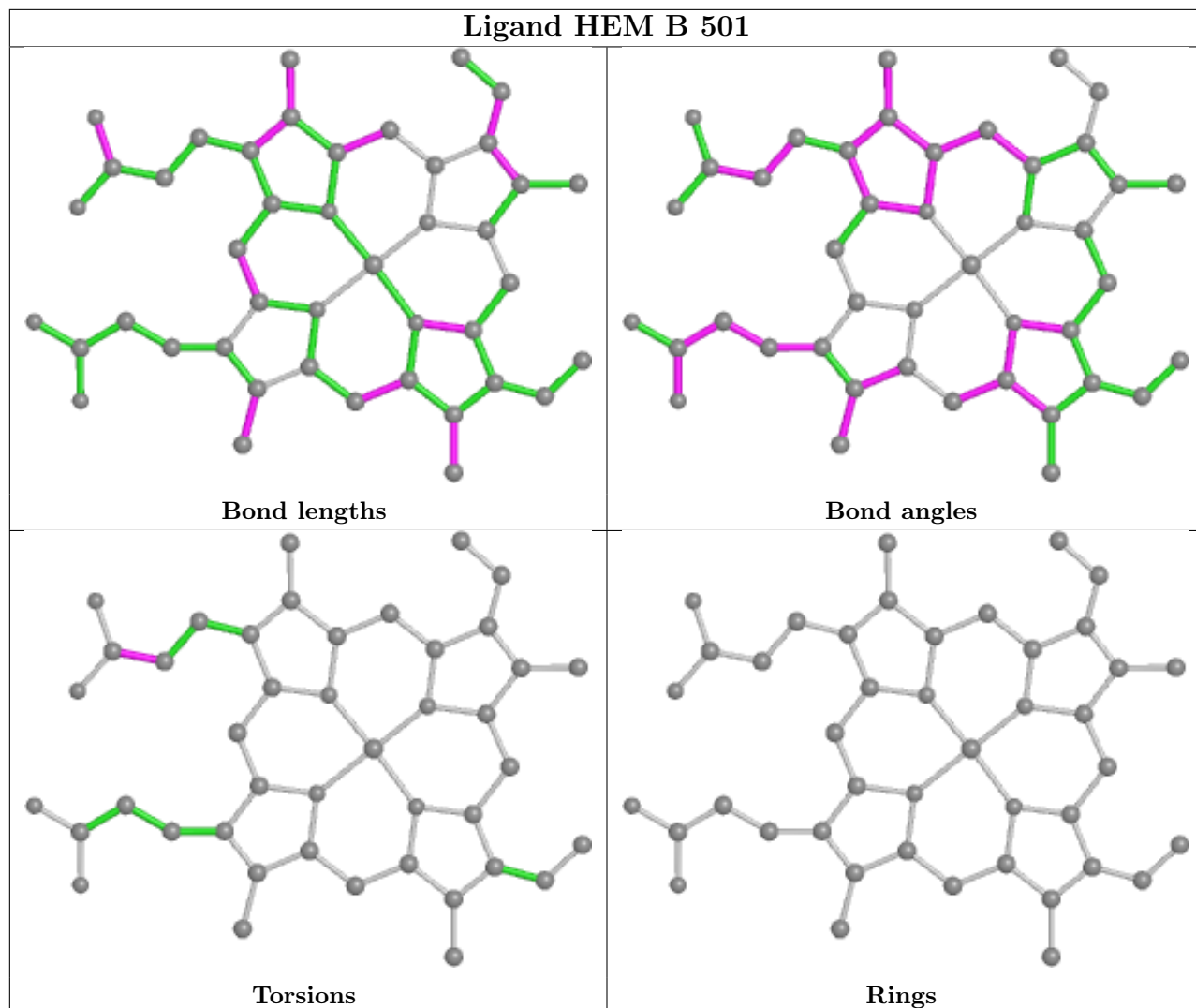
Mol	Chain	Res	Type	Atoms
2	A	501	HEM	CAA-CBA-CGA-O1A
2	B	501	HEM	CAD-CBD-CGD-O2D
2	A	501	HEM	CAD-CBD-CGD-O2D

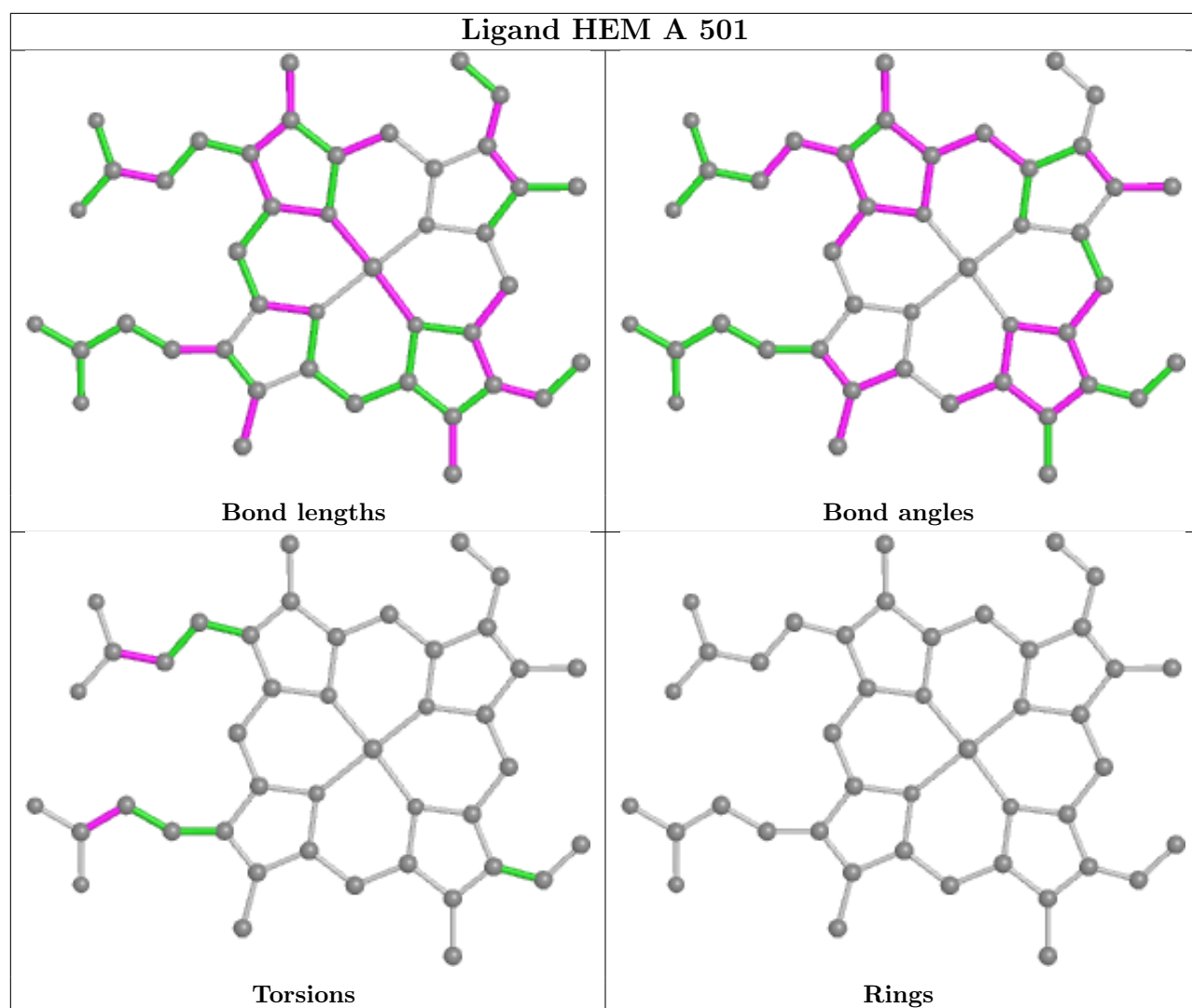
There are no ring outliers.

No monomer is involved in short contacts.

The following is a two-dimensional graphical depiction of Mogul quality analysis of bond lengths, bond angles, torsion angles, and ring geometry for all instances of the Ligand of Interest. In addition, ligands with molecular weight > 250 and outliers as shown on the validation Tables will also be included. For torsion angles, if less than 5% of the Mogul distribution of torsion angles is within 10 degrees of the torsion angle in question, then that torsion angle is considered an outlier. Any bond that is central to one or more torsion angles identified as an outlier by Mogul will be highlighted in the graph. For rings, the root-mean-square deviation (RMSD) between the ring in question and similar rings identified by Mogul is calculated over all ring torsion angles. If the average RMSD is greater than 60 degrees and the minimal RMSD between the ring in question and any Mogul-identified rings is also greater than 60 degrees, then that ring is considered an outlier. The outliers are highlighted in purple. The color gray indicates Mogul did not find sufficient

equivalents in the CSD to analyse the geometry.





5.7 Other polymers [i](#)

There are no such residues in this entry.

5.8 Polymer linkage issues [i](#)

There are no chain breaks in this entry.

6 Fit of model and data [i](#)

6.1 Protein, DNA and RNA chains [i](#)

In the following table, the column labelled ‘#RSRZ > 2’ contains the number (and percentage) of RSRZ outliers, followed by percent RSRZ outliers for the chain as percentile scores relative to all X-ray entries and entries of similar resolution. The OWAB column contains the minimum, median, 95th percentile and maximum values of the occupancy-weighted average B-factor per residue. The column labelled ‘Q < 0.9’ lists the number of (and percentage) of residues with an average occupancy less than 0.9.

Mol	Chain	Analysed	<RSRZ>	#RSRZ>2	OWAB(Å ²)	Q<0.9
1	A	451/457 (98%)	-0.15	10 (2%) 62 58	14, 25, 46, 64	0
1	B	448/457 (98%)	-0.23	7 (1%) 72 68	16, 26, 45, 72	0
All	All	899/914 (98%)	-0.19	17 (1%) 66 63	14, 25, 45, 72	0

All (17) RSRZ outliers are listed below:

Mol	Chain	Res	Type	RSRZ
1	B	196	PRO	6.1
1	A	457	GLY	5.2
1	B	198	TYR	3.9
1	B	188	LEU	3.6
1	A	456	GLY	3.6
1	A	110	GLN	3.6
1	B	197	ALA	3.3
1	A	46	GLY	3.2
1	B	195	ASP	3.1
1	A	196	PRO	3.1
1	A	230	SER	2.9
1	A	188	LEU	2.8
1	A	195	ASP	2.5
1	A	197	ALA	2.5
1	B	21	ASN	2.2
1	B	201	ASN	2.2
1	A	199	ASP	2.0

6.2 Non-standard residues in protein, DNA, RNA chains [i](#)

There are no non-standard protein/DNA/RNA residues in this entry.

6.3 Carbohydrates [i](#)

There are no monosaccharides in this entry.

6.4 Ligands [i](#)

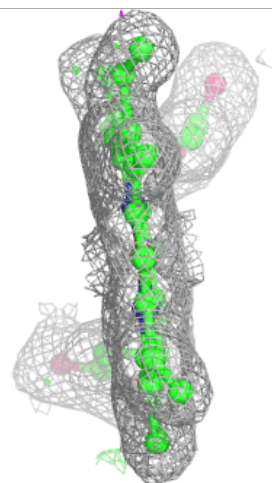
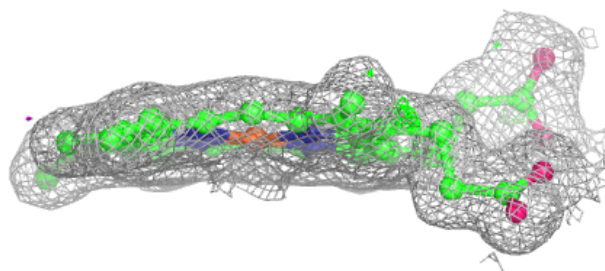
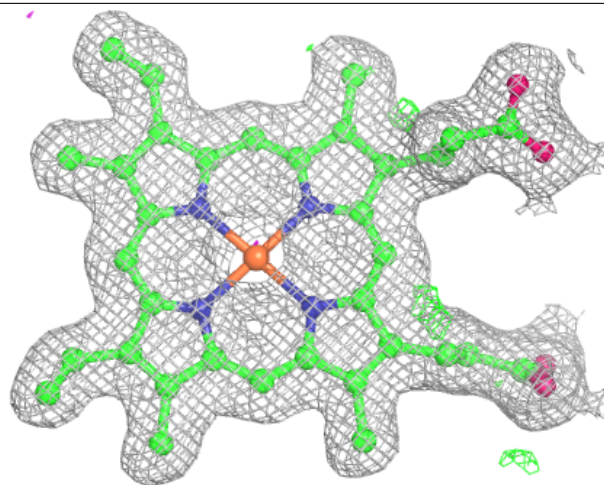
In the following table, the Atoms column lists the number of modelled atoms in the group and the number defined in the chemical component dictionary. The B-factors column lists the minimum, median, 95th percentile and maximum values of B factors of atoms in the group. The column labelled 'Q< 0.9' lists the number of atoms with occupancy less than 0.9.

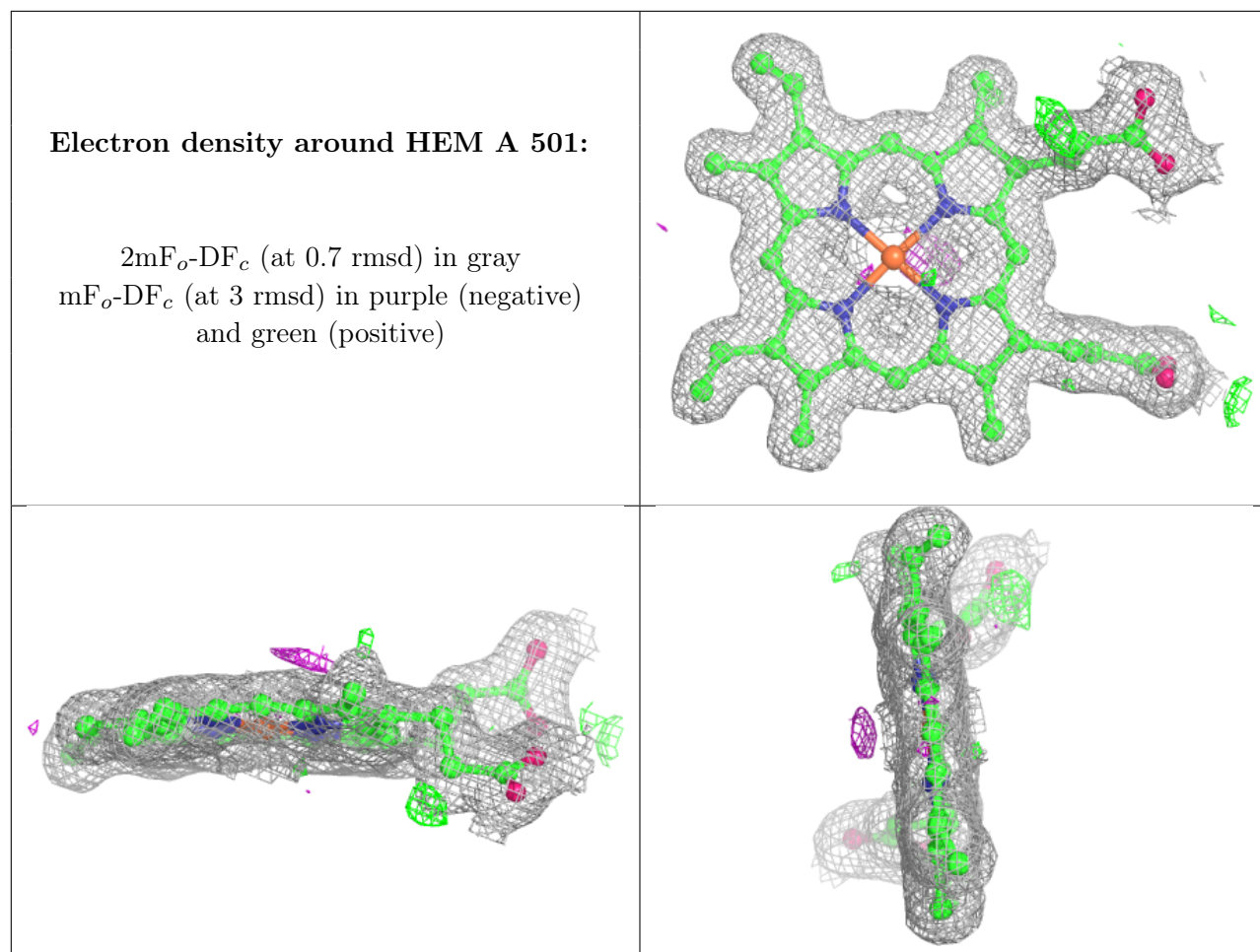
Mol	Type	Chain	Res	Atoms	RSCC	RSR	B-factors(Å ²)	Q<0.9
3	IMD	A	502	5/5	0.94	0.11	18,21,24,25	0
2	HEM	B	501	43/43	0.98	0.12	12,16,20,24	0
2	HEM	A	501	43/43	0.98	0.09	13,18,22,24	0
3	IMD	B	502	5/5	0.98	0.08	17,19,21,22	0

The following is a graphical depiction of the model fit to experimental electron density of all instances of the Ligand of Interest. In addition, ligands with molecular weight > 250 and outliers as shown on the geometry validation Tables will also be included. Each fit is shown from different orientation to approximate a three-dimensional view.

Electron density around HEM B 501:

$2mF_o-DF_c$ (at 0.7 rmsd) in gray
 mF_o-DF_c (at 3 rmsd) in purple (negative)
and green (positive)





6.5 Other polymers [i](#)

There are no such residues in this entry.