



# Full wwPDB X-ray Structure Validation Report ⓘ

Sep 10, 2023 – 11:40 PM EDT

PDB ID : 4K8T  
Title : Crystal structure of probable sugar kinase protein from *Rhizobium etli* CFN 42 complexed with ethyl 3,4-diaminobenzoate  
Authors : Malashkevich, V.N.; Bhosle, R.; Toro, R.; Hillerich, B.; Gizzi, A.; Garforth, S.; Kar, A.; Chan, M.K.; Laffuer, J.; Patel, H.; Matikainen, B.; Chamala, S.; Lim, S.; Celikgil, A.; Villegas, G.; Evans, B.; Love, J.; Fiser, A.; Khafizov, K.; Seidel, R.; Bonanno, J.B.; Almo, S.C.; New York Structural Genomics Research Consortium (NYSGRC)  
Deposited on : 2013-04-18  
Resolution : 1.70 Å(reported)

This is a Full wwPDB X-ray Structure Validation Report for a publicly released PDB entry.

We welcome your comments at [validation@mail.wwpdb.org](mailto:validation@mail.wwpdb.org)

A user guide is available at

<https://www.wwpdb.org/validation/2017/XrayValidationReportHelp>

with specific help available everywhere you see the ⓘ symbol.

The types of validation reports are described at

<http://www.wwpdb.org/validation/2017/FAQs#types>.

---

The following versions of software and data (see [references ⓘ](#)) were used in the production of this report:

MolProbity : 4.02b-467  
Mogul : 1.8.5 (274361), CSD as541be (2020)  
Xtriage (Phenix) : 1.13  
EDS : 2.35.1  
buster-report : 1.1.7 (2018)  
Percentile statistics : 20191225.v01 (using entries in the PDB archive December 25th 2019)  
Refmac : 5.8.0158  
CCP4 : 7.0.044 (Gargrove)

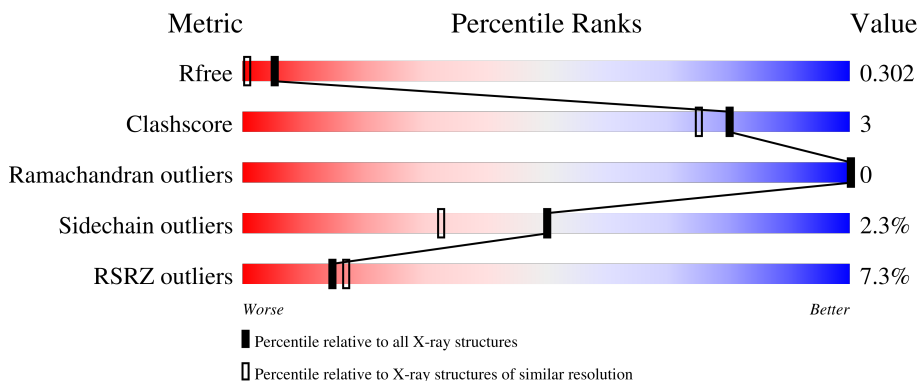
# 1 Overall quality at a glance

The following experimental techniques were used to determine the structure:

*X-RAY DIFFRACTION*

The reported resolution of this entry is 1.70 Å.

Percentile scores (ranging between 0-100) for global validation metrics of the entry are shown in the following graphic. The table shows the number of entries on which the scores are based.



Metric	Whole archive (#Entries)	Similar resolution (#Entries, resolution range(Å))
$R_{free}$	130704	4298 (1.70-1.70)
Clashscore	141614	4695 (1.70-1.70)
Ramachandran outliers	138981	4610 (1.70-1.70)
Sidechain outliers	138945	4610 (1.70-1.70)
RSRZ outliers	127900	4222 (1.70-1.70)

The table below summarises the geometric issues observed across the polymeric chains and their fit to the electron density. The red, orange, yellow and green segments of the lower bar indicate the fraction of residues that contain outliers for  $\geq 3$ , 2, 1 and 0 types of geometric quality criteria respectively. A grey segment represents the fraction of residues that are not modelled. The numeric value for each fraction is indicated below the corresponding segment, with a dot representing fractions  $\leq 5\%$ . The upper red bar (where present) indicates the fraction of residues that have poor fit to the electron density. The numeric value is given above the bar.

Mol	Chain	Length	Quality of chain
1	A	352	
1	B	352	

Ideal geometry (proteins) : Engh & Huber (2001)  
 Ideal geometry (DNA, RNA) : Parkinson et al. (1996)  
 Validation Pipeline (wwPDB-VP) : 2.35.1

## 2 Entry composition i

There are 6 unique types of molecules in this entry. The entry contains 5606 atoms, of which 0 are hydrogens and 0 are deuteriums.

In the tables below, the ZeroOcc column contains the number of atoms modelled with zero occupancy, the AltConf column contains the number of residues with at least one atom in alternate conformation and the Trace column contains the number of residues modelled with at most 2 atoms.

- Molecule 1 is a protein called sugar kinase.

Mol	Chain	Residues	Atoms						ZeroOcc	AltConf	Trace
			Total	C	N	O	S	Se			
1	A	330	2565	1602	450	495	8	10	0	11	0
1	B	330	2548	1593	446	491	8	10	0	8	0

There are 44 discrepancies between the modelled and reference sequences:

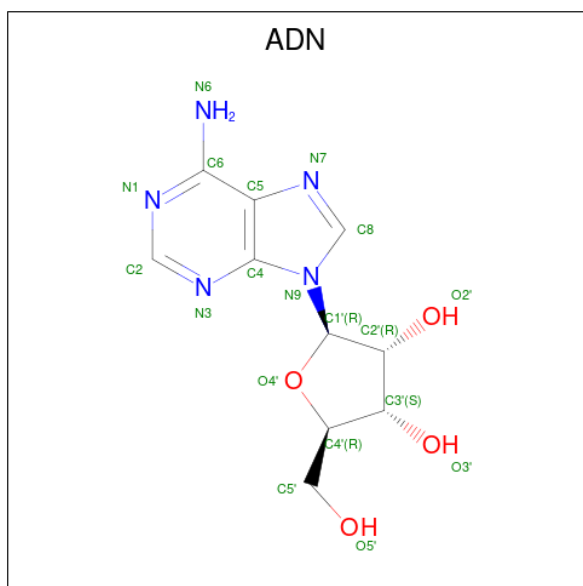
Chain	Residue	Modelled	Actual	Comment	Reference
A	-23	MSE	-	expression tag	UNP Q2KDX6
A	-22	HIS	-	expression tag	UNP Q2KDX6
A	-21	HIS	-	expression tag	UNP Q2KDX6
A	-20	HIS	-	expression tag	UNP Q2KDX6
A	-19	HIS	-	expression tag	UNP Q2KDX6
A	-18	HIS	-	expression tag	UNP Q2KDX6
A	-17	HIS	-	expression tag	UNP Q2KDX6
A	-16	SER	-	expression tag	UNP Q2KDX6
A	-15	SER	-	expression tag	UNP Q2KDX6
A	-14	GLY	-	expression tag	UNP Q2KDX6
A	-13	VAL	-	expression tag	UNP Q2KDX6
A	-12	ASP	-	expression tag	UNP Q2KDX6
A	-11	LEU	-	expression tag	UNP Q2KDX6
A	-10	GLY	-	expression tag	UNP Q2KDX6
A	-9	THR	-	expression tag	UNP Q2KDX6
A	-8	GLU	-	expression tag	UNP Q2KDX6
A	-7	ASN	-	expression tag	UNP Q2KDX6
A	-6	LEU	-	expression tag	UNP Q2KDX6
A	-5	TYR	-	expression tag	UNP Q2KDX6
A	-4	PHE	-	expression tag	UNP Q2KDX6
A	-3	GLN	-	expression tag	UNP Q2KDX6
A	-2	SER	-	expression tag	UNP Q2KDX6
B	-23	MSE	-	expression tag	UNP Q2KDX6
B	-22	HIS	-	expression tag	UNP Q2KDX6
B	-21	HIS	-	expression tag	UNP Q2KDX6

*Continued on next page...*

Continued from previous page...

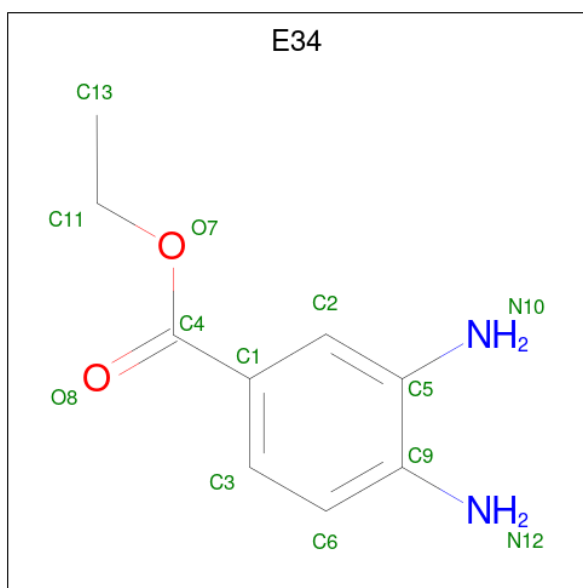
Chain	Residue	Modelled	Actual	Comment	Reference
B	-20	HIS	-	expression tag	UNP Q2KDX6
B	-19	HIS	-	expression tag	UNP Q2KDX6
B	-18	HIS	-	expression tag	UNP Q2KDX6
B	-17	HIS	-	expression tag	UNP Q2KDX6
B	-16	SER	-	expression tag	UNP Q2KDX6
B	-15	SER	-	expression tag	UNP Q2KDX6
B	-14	GLY	-	expression tag	UNP Q2KDX6
B	-13	VAL	-	expression tag	UNP Q2KDX6
B	-12	ASP	-	expression tag	UNP Q2KDX6
B	-11	LEU	-	expression tag	UNP Q2KDX6
B	-10	GLY	-	expression tag	UNP Q2KDX6
B	-9	THR	-	expression tag	UNP Q2KDX6
B	-8	GLU	-	expression tag	UNP Q2KDX6
B	-7	ASN	-	expression tag	UNP Q2KDX6
B	-6	LEU	-	expression tag	UNP Q2KDX6
B	-5	TYR	-	expression tag	UNP Q2KDX6
B	-4	PHE	-	expression tag	UNP Q2KDX6
B	-3	GLN	-	expression tag	UNP Q2KDX6
B	-2	SER	-	expression tag	UNP Q2KDX6

- Molecule 2 is ADENOSINE (three-letter code: ADN) (formula: C<sub>10</sub>H<sub>13</sub>N<sub>5</sub>O<sub>4</sub>).



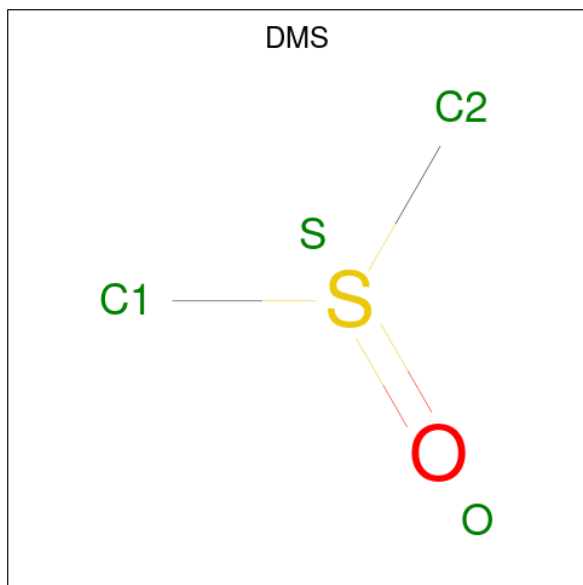
Mol	Chain	Residues	Atoms			ZeroOcc	AltConf	
2	A	1	Total	C	N	O	0	0
			19	10	5	4		
2	B	1	Total	C	N	O	0	0
			19	10	5	4		

- Molecule 3 is ethyl 3,4-diaminobenzoate (three-letter code: E34) (formula:  $C_9H_{12}N_2O_2$ ).



Mol	Chain	Residues	Atoms				ZeroOcc	AltConf
			Total	C	N	O		
3	A	1	13	9	2	2	0	0

- Molecule 4 is DIMETHYL SULFOXIDE (three-letter code: DMS) (formula:  $C_2H_6OS$ ).



Mol	Chain	Residues	Atoms				ZeroOcc	AltConf
			Total	C	O	S		
4	A	1	4	2	1	1	0	0
4	B	1	4	2	1	1	0	0

*Continued on next page...*

*Continued from previous page...*

Mol	Chain	Residues	Atoms				ZeroOcc	AltConf
4	B	1	Total	C	O	S	0	0
			4	2	1	1		

- Molecule 5 is POTASSIUM ION (three-letter code: K) (formula: K).

Mol	Chain	Residues	Atoms		ZeroOcc	AltConf
5	A	1	Total	K	0	0
			1	1		
5	B	1	Total	K	0	0
			1	1		

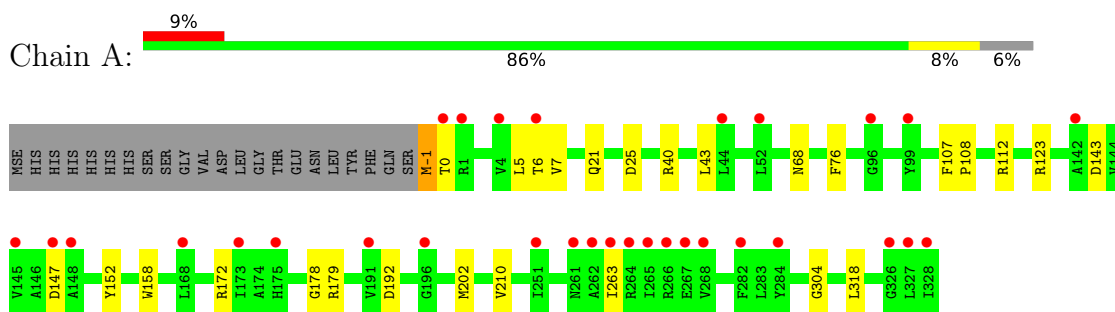
- Molecule 6 is water.

Mol	Chain	Residues	Atoms		ZeroOcc	AltConf
6	A	192	Total	O	0	0
			192	192		
6	B	236	Total	O	0	0
			236	236		

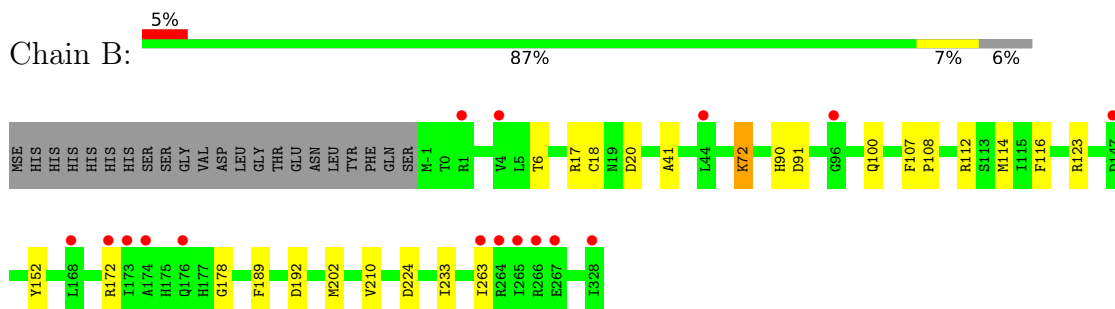
### 3 Residue-property plots [i](#)

These plots are drawn for all protein, RNA, DNA and oligosaccharide chains in the entry. The first graphic for a chain summarises the proportions of the various outlier classes displayed in the second graphic. The second graphic shows the sequence view annotated by issues in geometry and electron density. Residues are color-coded according to the number of geometric quality criteria for which they contain at least one outlier: green = 0, yellow = 1, orange = 2 and red = 3 or more. A red dot above a residue indicates a poor fit to the electron density ( $RSRZ > 2$ ). Stretches of 2 or more consecutive residues without any outlier are shown as a green connector. Residues present in the sample, but not in the model, are shown in grey.

- Molecule 1: sugar kinase



- Molecule 1: sugar kinase



## 4 Data and refinement statistics

Property	Value	Source
Space group	P 1 21 1	Depositor
Cell constants a, b, c, $\alpha$ , $\beta$ , $\gamma$	51.33Å 80.98Å 82.79Å 90.00° 98.25° 90.00°	Depositor
Resolution (Å)	43.03 – 1.70 43.03 – 1.70	Depositor EDS
% Data completeness (in resolution range)	97.3 (43.03-1.70) 97.1 (43.03-1.70)	Depositor EDS
$R_{merge}$	0.09	Depositor
$R_{sym}$	(Not available)	Depositor
$\langle I/\sigma(I) \rangle$ <sup>1</sup>	1.46 (at 1.70Å)	Xtrriage
Refinement program	REFMAC	Depositor
R, $R_{free}$	0.243 , 0.304 0.242 , 0.302	Depositor DCC
$R_{free}$ test set	3635 reflections (5.06%)	wwPDB-VP
Wilson B-factor (Å <sup>2</sup> )	18.9	Xtrriage
Anisotropy	0.350	Xtrriage
Bulk solvent $k_{sol}$ (e/Å <sup>3</sup> ), $B_{sol}$ (Å <sup>2</sup> )	0.34 , 51.8	EDS
L-test for twinning <sup>2</sup>	$\langle  L  \rangle = 0.51$ , $\langle L^2 \rangle = 0.34$	Xtrriage
Estimated twinning fraction	No twinning to report.	Xtrriage
$F_o, F_c$ correlation	0.92	EDS
Total number of atoms	5606	wwPDB-VP
Average B, all atoms (Å <sup>2</sup> )	23.0	wwPDB-VP

Xtrriage's analysis on translational NCS is as follows: *The analyses of the Patterson function reveals a significant off-origin peak that is 54.41 % of the origin peak, indicating pseudo-translational symmetry. The chance of finding a peak of this or larger height randomly in a structure without pseudo-translational symmetry is equal to 3.6648e-05. The detected translational NCS is most likely also responsible for the elevated intensity ratio.*

<sup>1</sup>Intensities estimated from amplitudes.

<sup>2</sup>Theoretical values of  $\langle |L| \rangle$ ,  $\langle L^2 \rangle$  for acentric reflections are 0.5, 0.333 respectively for untwinned datasets, and 0.375, 0.2 for perfectly twinned datasets.



## 5 Model quality [i](#)

### 5.1 Standard geometry [i](#)

Bond lengths and bond angles in the following residue types are not validated in this section: DMS, ADN, E34, K

The Z score for a bond length (or angle) is the number of standard deviations the observed value is removed from the expected value. A bond length (or angle) with  $|Z| > 5$  is considered an outlier worth inspection. RMSZ is the root-mean-square of all Z scores of the bond lengths (or angles).

Mol	Chain	Bond lengths		Bond angles	
		RMSZ	# Z  >5	RMSZ	# Z  >5
1	A	0.49	0/2622	0.64	1/3526 (0.0%)
1	B	0.51	0/2599	0.65	0/3495
All	All	0.50	0/5221	0.65	1/7021 (0.0%)

There are no bond length outliers.

All (1) bond angle outliers are listed below:

Mol	Chain	Res	Type	Atoms	Z	Observed(°)	Ideal(°)
1	A	192	ASP	CB-CG-OD1	5.47	123.22	118.30

There are no chirality outliers.

There are no planarity outliers.

### 5.2 Too-close contacts [i](#)

In the following table, the Non-H and H(model) columns list the number of non-hydrogen atoms and hydrogen atoms in the chain respectively. The H(added) column lists the number of hydrogen atoms added and optimized by MolProbity. The Clashes column lists the number of clashes within the asymmetric unit, whereas Symm-Clashes lists symmetry-related clashes.

Mol	Chain	Non-H	H(model)	H(added)	Clashes	Symm-Clashes
1	A	2565	0	2545	14	1
1	B	2548	0	2531	14	0
2	A	19	0	13	0	0
2	B	19	0	13	0	0
3	A	13	0	12	0	0
4	A	4	0	6	0	0
4	B	8	0	12	0	0
5	A	1	0	0	0	0

*Continued on next page...*

Continued from previous page...

Mol	Chain	Non-H	H(model)	H(added)	Clashes	Symm-Clashes
5	B	1	0	0	0	0
6	A	192	0	0	3	1
6	B	236	0	0	4	0
All	All	5606	0	5132	28	1

The all-atom clashscore is defined as the number of clashes found per 1000 atoms (including hydrogen atoms). The all-atom clashscore for this structure is 3.

All (28) close contacts within the same asymmetric unit are listed below, sorted by their clash magnitude.

Atom-1	Atom-2	Interatomic distance (Å)	Clash overlap (Å)
1:A:202:MSE:HE3	1:A:210[A]:VAL:HG21	1.82	0.61
1:A:0:THR:HG21	1:A:179:ARG:NH1	2.17	0.60
1:B:202:MSE:HE3	1:B:210[B]:VAL:HG11	1.84	0.58
1:B:172:ARG:NH2	6:B:736:HOH:O	2.38	0.57
1:B:72[B]:LYS:HA	1:B:72[B]:LYS:HE3	1.92	0.51
1:B:100[A]:GLN:NE2	6:B:707:HOH:O	2.44	0.50
1:A:263:ILE:HD11	1:A:304:GLY:HA3	1.96	0.48
1:A:178:GLY:HA2	6:A:651:HOH:O	2.12	0.48
1:A:107:PHE:HA	1:A:108:PRO:C	2.34	0.48
1:B:202:MSE:HE1	1:B:233:ILE:HG13	1.97	0.46
1:A:7:VAL:HG22	1:A:76:PHE:HB2	1.97	0.46
1:B:202:MSE:HE3	1:B:210[A]:VAL:HG21	1.98	0.45
1:B:178:GLY:HA3	6:B:735:HOH:O	2.17	0.45
1:A:43:LEU:HD21	6:A:681:HOH:O	2.17	0.44
1:B:107:PHE:HA	1:B:108:PRO:C	2.37	0.44
1:A:0:THR:HB	1:A:147:ASP:O	2.18	0.44
1:B:17:ARG:HG3	6:B:606:HOH:O	2.17	0.44
1:A:21:GLN:NE2	1:A:25:ASP:OD1	2.45	0.43
1:A:0:THR:HG21	1:A:179:ARG:HH12	1.81	0.43
1:B:41:ALA:HA	1:B:114:MSE:HE1	2.00	0.43
1:B:90:HIS:HD2	1:B:91:ASP:OD1	2.02	0.43
1:A:172:ARG:NH2	6:A:688:HOH:O	2.51	0.42
1:A:6:THR:HA	1:A:152:TYR:O	2.20	0.42
1:B:189:PHE:O	1:B:192:ASP:HB2	2.20	0.42
1:B:6:THR:HA	1:B:152:TYR:O	2.20	0.41
1:B:18:CYS:SG	1:B:116:PHE:HB3	2.60	0.41
1:A:5:LEU:HD21	1:A:76:PHE:CE2	2.55	0.41
1:A:68:ASN:HB3	1:A:318:LEU:HD12	2.02	0.41

All (1) symmetry-related close contacts are listed below. The label for Atom-2 includes the sym-

metry operator and encoded unit-cell translations to be applied.

Atom-1	Atom-2	Interatomic distance (Å)	Clash overlap (Å)
1:A:-1:MSE:N	6:A:678:HOH:O[2_856]	2.19	0.01

## 5.3 Torsion angles [i](#)

### 5.3.1 Protein backbone [i](#)

In the following table, the Percentiles column shows the percent Ramachandran outliers of the chain as a percentile score with respect to all X-ray entries followed by that with respect to entries of similar resolution.

The Analysed column shows the number of residues for which the backbone conformation was analysed, and the total number of residues.

Mol	Chain	Analysed	Favoured	Allowed	Outliers	Percentiles	
1	A	339/352 (96%)	335 (99%)	4 (1%)	0	100	100
1	B	336/352 (96%)	332 (99%)	4 (1%)	0	100	100
All	All	675/704 (96%)	667 (99%)	8 (1%)	0	100	100

There are no Ramachandran outliers to report.

### 5.3.2 Protein sidechains [i](#)

In the following table, the Percentiles column shows the percent sidechain outliers of the chain as a percentile score with respect to all X-ray entries followed by that with respect to entries of similar resolution.

The Analysed column shows the number of residues for which the sidechain conformation was analysed, and the total number of residues.

Mol	Chain	Analysed	Rotameric	Outliers	Percentiles	
1	A	267/266 (100%)	260 (97%)	7 (3%)	46	28
1	B	265/266 (100%)	257 (97%)	8 (3%)	41	22
All	All	532/532 (100%)	517 (97%)	15 (3%)	50	25

All (15) residues with a non-rotameric sidechain are listed below:

Mol	Chain	Res	Type
1	A	-1	MSE

*Continued on next page...*

*Continued from previous page...*

Mol	Chain	Res	Type
1	A	40	ARG
1	A	112	ARG
1	A	123[A]	ARG
1	A	123[B]	ARG
1	A	143	ASP
1	A	158	TRP
1	B	20	ASP
1	B	72[A]	LYS
1	B	72[B]	LYS
1	B	112	ARG
1	B	123[A]	ARG
1	B	123[B]	ARG
1	B	224	ASP
1	B	263	ILE

Sometimes sidechains can be flipped to improve hydrogen bonding and reduce clashes. All (2) such sidechains are listed below:

Mol	Chain	Res	Type
1	B	90	HIS
1	B	324	GLN

### 5.3.3 RNA [i](#)

There are no RNA molecules in this entry.

## 5.4 Non-standard residues in protein, DNA, RNA chains [i](#)

There are no non-standard protein/DNA/RNA residues in this entry.

## 5.5 Carbohydrates [i](#)

There are no monosaccharides in this entry.

## 5.6 Ligand geometry [i](#)

Of 8 ligands modelled in this entry, 2 are monoatomic - leaving 6 for Mogul analysis.

In the following table, the Counts columns list the number of bonds (or angles) for which Mogul statistics could be retrieved, the number of bonds (or angles) that are observed in the model and

the number of bonds (or angles) that are defined in the Chemical Component Dictionary. The Link column lists molecule types, if any, to which the group is linked. The Z score for a bond length (or angle) is the number of standard deviations the observed value is removed from the expected value. A bond length (or angle) with  $|Z| > 2$  is considered an outlier worth inspection. RMSZ is the root-mean-square of all Z scores of the bond lengths (or angles).

Mol	Type	Chain	Res	Link	Bond lengths			Bond angles		
					Counts	RMSZ	# Z  > 2	Counts	RMSZ	# Z  > 2
2	ADN	A	401	-	18,21,21	1.00	1 (5%)	18,31,31	1.49	5 (27%)
3	E34	A	402	-	13,13,13	1.56	1 (7%)	17,17,17	1.66	4 (23%)
4	DMS	B	402	-	3,3,3	0.57	0	3,3,3	0.61	0
4	DMS	B	403	-	3,3,3	0.55	0	3,3,3	0.52	0
2	ADN	B	401	-	18,21,21	1.06	2 (11%)	18,31,31	1.72	6 (33%)
4	DMS	A	403	-	3,3,3	0.60	0	3,3,3	0.48	0

In the following table, the Chirals column lists the number of chiral outliers, the number of chiral centers analysed, the number of these observed in the model and the number defined in the Chemical Component Dictionary. Similar counts are reported in the Torsion and Rings columns. '-' means no outliers of that kind were identified.

Mol	Type	Chain	Res	Link	Chirals	Torsions	Rings
3	E34	A	402	-	-	3/7/7/7	0/1/1/1
2	ADN	B	401	-	-	0/2/22/22	0/3/3/3
2	ADN	A	401	-	-	0/2/22/22	0/3/3/3

All (4) bond length outliers are listed below:

Mol	Chain	Res	Type	Atoms	Z	Observed(Å)	Ideal(Å)
3	A	402	E34	O7-C4	5.04	1.46	1.33
2	A	401	ADN	C5-C4	2.71	1.48	1.40
2	B	401	ADN	C2-N3	2.65	1.36	1.32
2	B	401	ADN	C5-C4	2.56	1.47	1.40

All (15) bond angle outliers are listed below:

Mol	Chain	Res	Type	Atoms	Z	Observed(°)	Ideal(°)
3	A	402	E34	O7-C4-C1	3.82	118.80	112.14
2	B	401	ADN	N3-C2-N1	-3.55	123.13	128.68
3	A	402	E34	C11-O7-C4	3.18	123.85	116.46
2	B	401	ADN	C1'-N9-C4	-2.92	121.51	126.64
3	A	402	E34	C2-C5-C9	2.85	120.84	119.00
2	A	401	ADN	N3-C2-N1	-2.78	124.34	128.68
2	B	401	ADN	O4'-C1'-C2'	-2.77	102.88	106.93

*Continued on next page...*

*Continued from previous page...*

Mol	Chain	Res	Type	Atoms	Z	Observed(°)	Ideal(°)
2	B	401	ADN	C4-C5-N7	-2.44	106.86	109.40
2	A	401	ADN	O4'-C1'-C2'	-2.43	103.38	106.93
2	B	401	ADN	C2-N1-C6	2.36	122.78	118.75
2	A	401	ADN	C2-N1-C6	2.34	122.75	118.75
2	A	401	ADN	C4-C5-N7	-2.33	106.97	109.40
3	A	402	E34	O7-C4-O8	-2.25	119.11	123.67
2	B	401	ADN	C3'-C2'-C1'	2.10	104.15	100.98
2	A	401	ADN	C1'-N9-C4	-2.04	123.06	126.64

There are no chirality outliers.

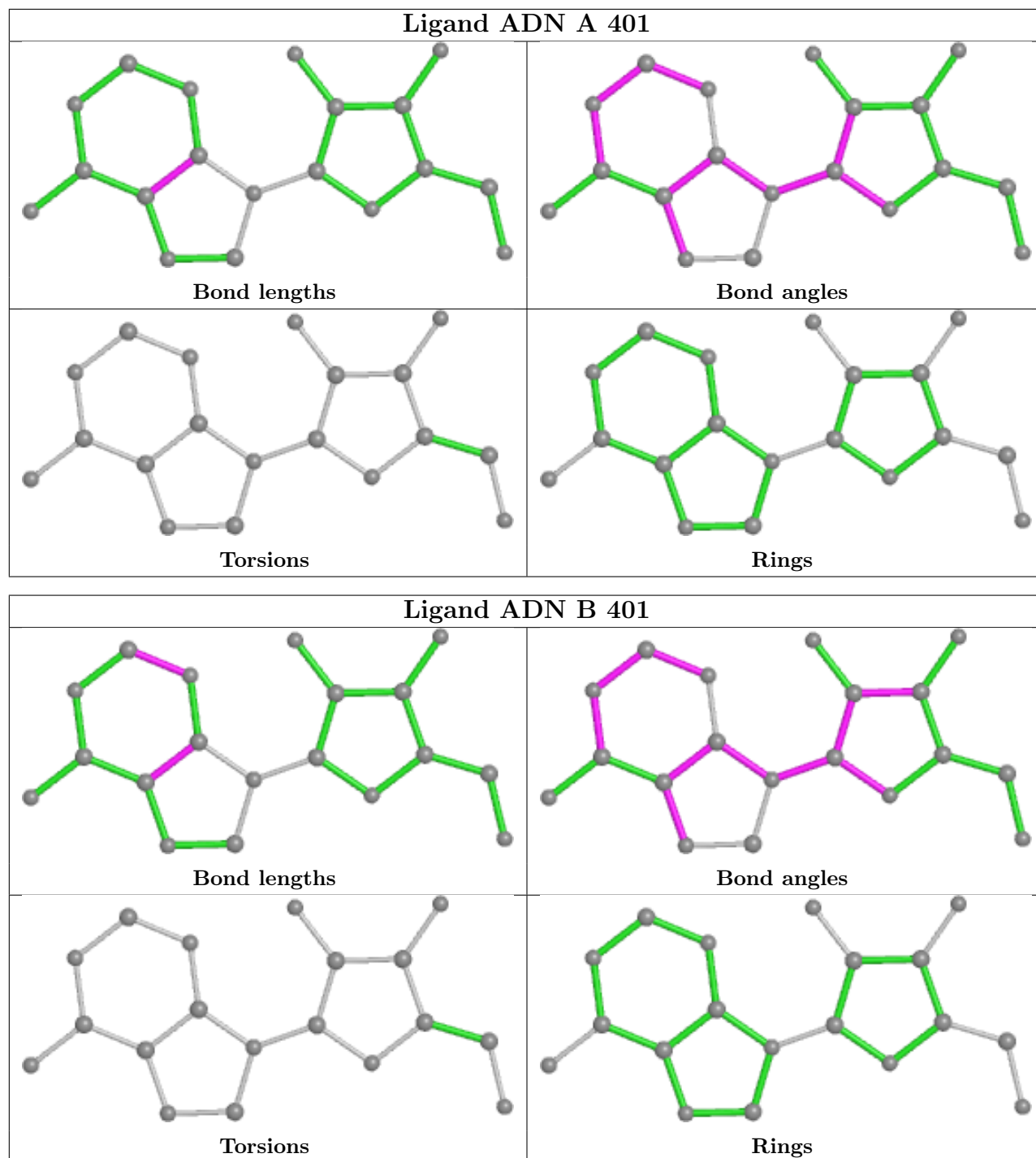
All (3) torsion outliers are listed below:

Mol	Chain	Res	Type	Atoms
3	A	402	E34	C1-C4-O7-C11
3	A	402	E34	O8-C4-O7-C11
3	A	402	E34	C13-C11-O7-C4

There are no ring outliers.

No monomer is involved in short contacts.

The following is a two-dimensional graphical depiction of Mogul quality analysis of bond lengths, bond angles, torsion angles, and ring geometry for all instances of the Ligand of Interest. In addition, ligands with molecular weight > 250 and outliers as shown on the validation Tables will also be included. For torsion angles, if less than 5% of the Mogul distribution of torsion angles is within 10 degrees of the torsion angle in question, then that torsion angle is considered an outlier. Any bond that is central to one or more torsion angles identified as an outlier by Mogul will be highlighted in the graph. For rings, the root-mean-square deviation (RMSD) between the ring in question and similar rings identified by Mogul is calculated over all ring torsion angles. If the average RMSD is greater than 60 degrees and the minimal RMSD between the ring in question and any Mogul-identified rings is also greater than 60 degrees, then that ring is considered an outlier. The outliers are highlighted in purple. The color gray indicates Mogul did not find sufficient equivalents in the CSD to analyse the geometry.



## 5.7 Other polymers [i](#)

There are no such residues in this entry.

## 5.8 Polymer linkage issues [i](#)

There are no chain breaks in this entry.

## 6 Fit of model and data

### 6.1 Protein, DNA and RNA chains

In the following table, the column labelled ‘#RSRZ > 2’ contains the number (and percentage) of RSRZ outliers, followed by percent RSRZ outliers for the chain as percentile scores relative to all X-ray entries and entries of similar resolution. The OWAB column contains the minimum, median, 95<sup>th</sup> percentile and maximum values of the occupancy-weighted average B-factor per residue. The column labelled ‘Q < 0.9’ lists the number of (and percentage) of residues with an average occupancy less than 0.9.

Mol	Chain	Analysed	<RSRZ>	#RSRZ>2	OWAB(Å <sup>2</sup> )	Q<0.9
1	A	320/352 (90%)	0.74	31 (9%) <b>7</b> <b>8</b>	13, 21, 37, 66	0
1	B	320/352 (90%)	0.64	16 (5%) <b>28</b> <b>32</b>	12, 19, 33, 69	0
All	All	640/704 (90%)	0.69	47 (7%) <b>15</b> <b>17</b>	12, 20, 35, 69	0

All (47) RSRZ outliers are listed below:

Mol	Chain	Res	Type	RSRZ
1	B	265	ILE	6.9
1	A	264	ARG	6.3
1	A	265	ILE	6.1
1	B	263	ILE	6.1
1	B	266	ARG	6.1
1	A	266	ARG	4.7
1	B	328	ILE	4.1
1	A	263	ILE	3.5
1	B	264	ARG	3.3
1	A	328	ILE	2.9
1	A	327	LEU	2.8
1	A	0	THR	2.7
1	A	173	ILE	2.7
1	B	267	GLU	2.7
1	A	261	ASN	2.6
1	B	44	LEU	2.6
1	A	284	TYR	2.6
1	B	176	GLN	2.6
1	A	175	HIS	2.5
1	A	96	GLY	2.5
1	A	251	ILE	2.5
1	A	99	TYR	2.4
1	A	147	ASP	2.4
1	A	4	VAL	2.4

*Continued on next page...*



*Continued from previous page...*

Mol	Chain	Res	Type	RSRZ
1	A	145	VAL	2.4
1	B	168	LEU	2.4
1	B	147	ASP	2.4
1	A	142	ALA	2.3
1	B	4	VAL	2.3
1	A	262	ALA	2.3
1	B	1	ARG	2.3
1	A	52	LEU	2.3
1	A	148	ALA	2.3
1	A	1	ARG	2.2
1	A	44	LEU	2.2
1	B	172	ARG	2.2
1	A	196	GLY	2.2
1	A	326	GLY	2.2
1	B	96	GLY	2.1
1	A	191	VAL	2.1
1	B	173	ILE	2.1
1	A	168	LEU	2.1
1	B	174	ALA	2.0
1	A	282	PHE	2.0
1	A	267	GLU	2.0
1	A	268	VAL	2.0
1	A	6	THR	2.0

## 6.2 Non-standard residues in protein, DNA, RNA chains [i](#)

There are no non-standard protein/DNA/RNA residues in this entry.

## 6.3 Carbohydrates [i](#)

There are no monosaccharides in this entry.

## 6.4 Ligands [i](#)

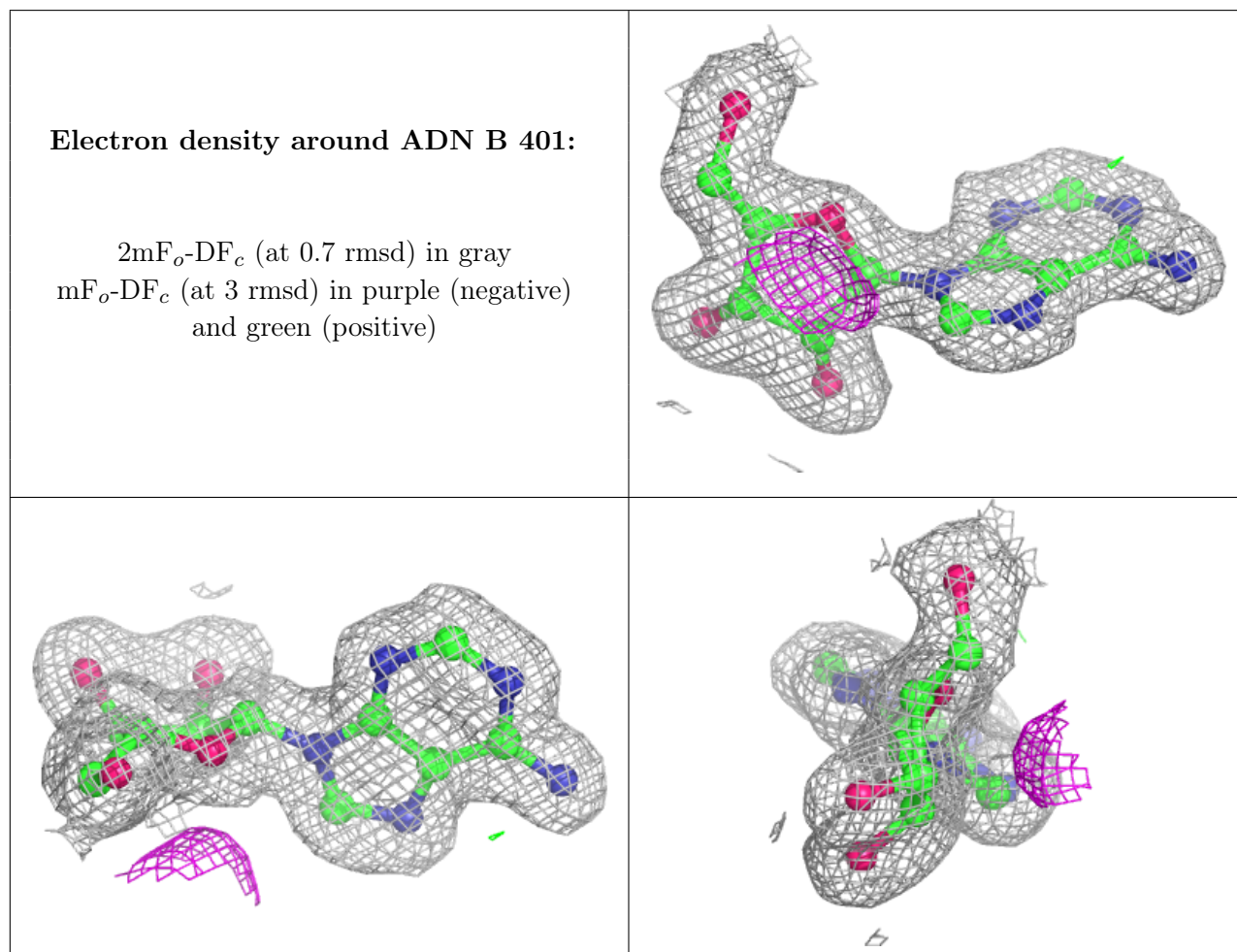
In the following table, the Atoms column lists the number of modelled atoms in the group and the number defined in the chemical component dictionary. The B-factors column lists the minimum, median, 95<sup>th</sup> percentile and maximum values of B factors of atoms in the group. The column labelled 'Q< 0.9' lists the number of atoms with occupancy less than 0.9.

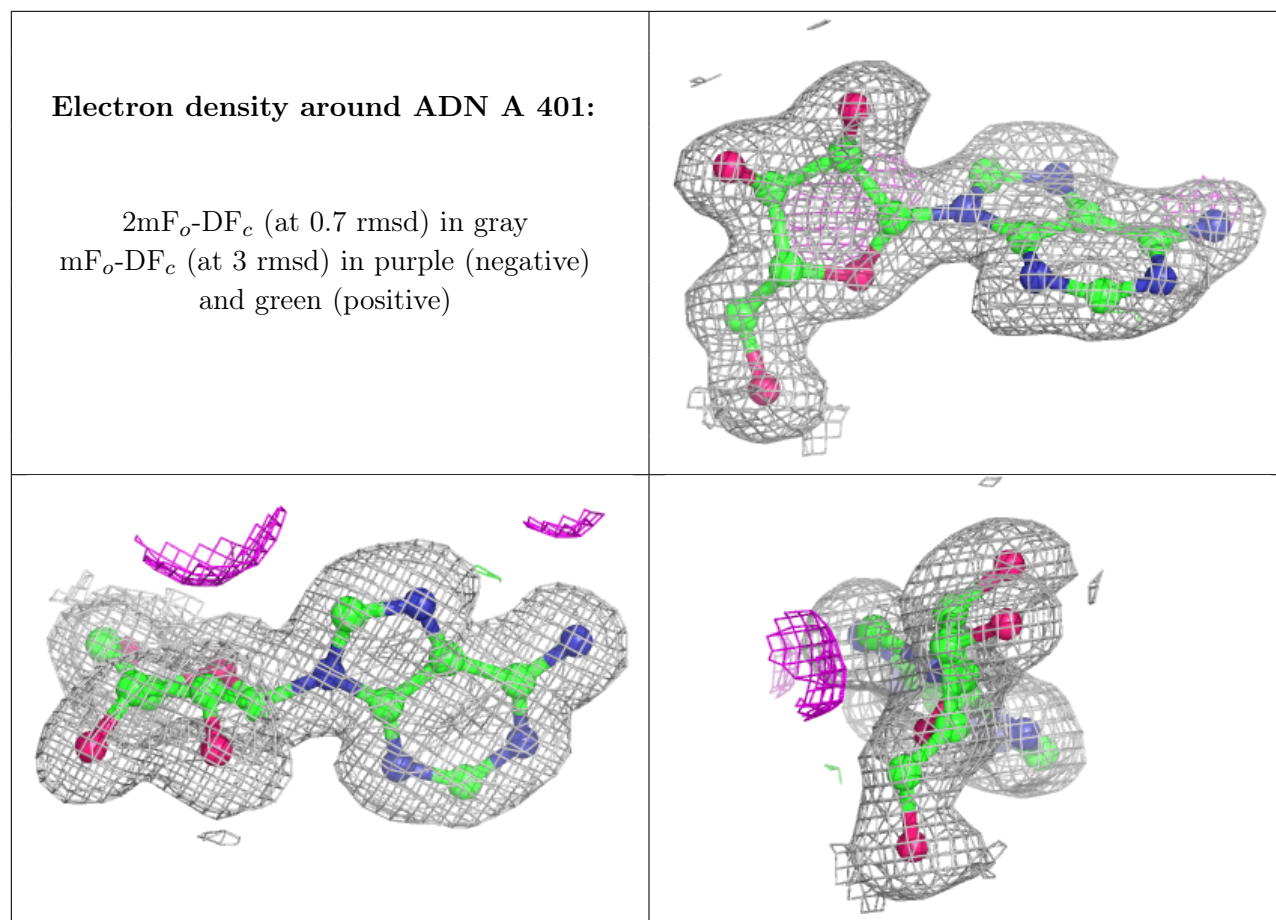
*Continued on next page...*

Continued from previous page...

Mol	Type	Chain	Res	Atoms	RSCC	RSR	B-factors( $\text{\AA}^2$ )	Q<0.9
3	E34	A	402	13/13	0.85	0.17	18,19,24,27	0
4	DMS	B	403	4/4	0.93	0.11	36,45,47,53	0
2	ADN	B	401	19/19	0.94	0.10	12,14,16,18	0
5	K	B	404	1/1	0.94	0.21	43,43,43,43	0
5	K	A	404	1/1	0.96	0.24	43,43,43,43	0
2	ADN	A	401	19/19	0.96	0.09	12,14,17,19	0
4	DMS	B	402	4/4	0.98	0.07	26,27,30,31	0
4	DMS	A	403	4/4	0.98	0.10	24,27,27,30	0

The following is a graphical depiction of the model fit to experimental electron density of all instances of the Ligand of Interest. In addition, ligands with molecular weight > 250 and outliers as shown on the geometry validation Tables will also be included. Each fit is shown from different orientation to approximate a three-dimensional view.





## 6.5 Other polymers [i](#)

There are no such residues in this entry.