



# Full wwPDB X-ray Structure Validation Report ⓘ

Nov 17, 2024 – 06:38 PM EST

PDB ID : 4ITS  
Title : Crystal structure of the catalytic domain of human Pus1 with MES in the active site  
Authors : Czudnochowski, N.; Finer-Moore, J.S.; Stroud, R.M.  
Deposited on : 2013-01-18  
Resolution : 1.85 Å(reported)

This is a Full wwPDB X-ray Structure Validation Report for a publicly released PDB entry.

We welcome your comments at [validation@mail.wwpdb.org](mailto:validation@mail.wwpdb.org)

A user guide is available at

<https://www.wwpdb.org/validation/2017/XrayValidationReportHelp>

with specific help available everywhere you see the ⓘ symbol.

The types of validation reports are described at

<http://www.wwpdb.org/validation/2017/FAQs#types>.

---

The following versions of software and data (see [references ⓘ](#)) were used in the production of this report:

MolProbity : 4.02b-467  
Mogul : 2022.3.0, CSD as543be (2022)  
Xtriage (Phenix) : 1.20.1  
EDS : 3.0  
Percentile statistics : 20231227.v01 (using entries in the PDB archive December 27th 2023)  
CCP4 : 9.0.003 (Gargrove)  
Density-Fitness : 1.0.11  
Ideal geometry (proteins) : Engh & Huber (2001)  
Ideal geometry (DNA, RNA) : Parkinson et al. (1996)  
Validation Pipeline (wwPDB-VP) : 2.39

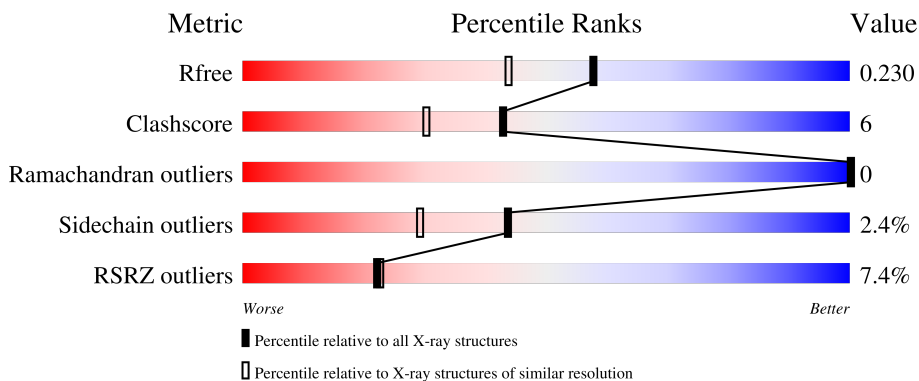
# 1 Overall quality at a glance

The following experimental techniques were used to determine the structure:

*X-RAY DIFFRACTION*

The reported resolution of this entry is 1.85 Å.

Percentile scores (ranging between 0-100) for global validation metrics of the entry are shown in the following graphic. The table shows the number of entries on which the scores are based.



Metric	Whole archive (#Entries)	Similar resolution (#Entries, resolution range(Å))
$R_{free}$	164625	3097 (1.86-1.86)
Clashscore	180529	3359 (1.86-1.86)
Ramachandran outliers	177936	3335 (1.86-1.86)
Sidechain outliers	177891	3335 (1.86-1.86)
RSRZ outliers	164620	3097 (1.86-1.86)

The table below summarises the geometric issues observed across the polymeric chains and their fit to the electron density. The red, orange, yellow and green segments of the lower bar indicate the fraction of residues that contain outliers for  $\geq 3$ , 2, 1 and 0 types of geometric quality criteria respectively. A grey segment represents the fraction of residues that are not modelled. The numeric value for each fraction is indicated below the corresponding segment, with a dot representing fractions  $\leq 5\%$ . The upper red bar (where present) indicates the fraction of residues that have poor fit to the electron density. The numeric value is given above the bar.

Mol	Chain	Length	Quality of chain
1	A	336	

## 2 Entry composition [i](#)

There are 4 unique types of molecules in this entry. The entry contains 2570 atoms, of which 13 are hydrogens and 0 are deuteriums.

In the tables below, the ZeroOcc column contains the number of atoms modelled with zero occupancy, the AltConf column contains the number of residues with at least one atom in alternate conformation and the Trace column contains the number of residues modelled with at most 2 atoms.

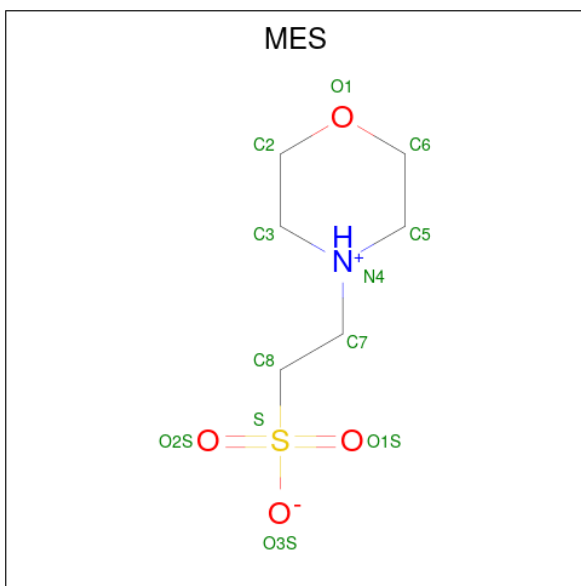
- Molecule 1 is a protein called tRNA pseudouridine synthase A, mitochondrial.

Mol	Chain	Residues	Atoms					ZeroOcc	AltConf	Trace
			Total	C	N	O	S			
1	A	296	2371	1508	420	426	17	0	2	0

There are 6 discrepancies between the modelled and reference sequences:

Chain	Residue	Modelled	Actual	Comment	Reference
A	73	GLY	-	expression tag	UNP Q9Y606
A	74	PRO	-	expression tag	UNP Q9Y606
A	75	GLY	-	expression tag	UNP Q9Y606
A	76	SER	-	expression tag	UNP Q9Y606
A	77	GLU	-	expression tag	UNP Q9Y606
A	78	PHE	-	expression tag	UNP Q9Y606

- Molecule 2 is 2-(N-MORPHOLINO)-ETHANESULFONIC ACID (three-letter code: MES) (formula: C<sub>6</sub>H<sub>13</sub>NO<sub>4</sub>S).



Mol	Chain	Residues	Atoms					ZeroOcc	AltConf	
			Total	C	H	N	O			S
2	A	1	25	6	13	1	4	1	0	0

- Molecule 3 is SULFATE ION (three-letter code: SO4) (formula: O<sub>4</sub>S).



Mol	Chain	Residues	Atoms			ZeroOcc	AltConf
			Total	O	S		
3	A	1	5	4	1	0	0
3	A	1	5	4	1	0	0
3	A	1	5	4	1	0	0
3	A	1	5	4	1	0	0

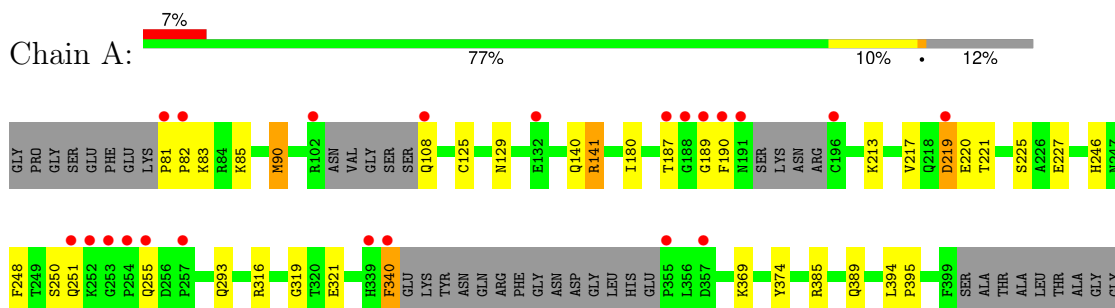
- Molecule 4 is water.

Mol	Chain	Residues	Atoms		ZeroOcc	AltConf
			Total	O		
4	A	154	154	154	0	0

### 3 Residue-property plots [i](#)

These plots are drawn for all protein, RNA, DNA and oligosaccharide chains in the entry. The first graphic for a chain summarises the proportions of the various outlier classes displayed in the second graphic. The second graphic shows the sequence view annotated by issues in geometry and electron density. Residues are color-coded according to the number of geometric quality criteria for which they contain at least one outlier: green = 0, yellow = 1, orange = 2 and red = 3 or more. A red dot above a residue indicates a poor fit to the electron density ( $RSRZ > 2$ ). Stretches of 2 or more consecutive residues without any outlier are shown as a green connector. Residues present in the sample, but not in the model, are shown in grey.

- Molecule 1: tRNA pseudouridine synthase A, mitochondrial



## 4 Data and refinement statistics

Property	Value	Source
Space group	P 65 2 2	Depositor
Cell constants a, b, c, $\alpha$ , $\beta$ , $\gamma$	51.86Å 51.86Å 446.20Å 90.00° 90.00° 120.00°	Depositor
Resolution (Å)	44.91 – 1.85 44.91 – 1.85	Depositor EDS
% Data completeness (in resolution range)	99.5 (44.91-1.85) 99.6 (44.91-1.85)	Depositor EDS
$R_{merge}$	0.07	Depositor
$R_{sym}$	(Not available)	Depositor
$\langle I/\sigma(I) \rangle$ <sup>1</sup>	3.13 (at 1.86Å)	Xtrriage
Refinement program	PHENIX (phenix.refine: 1.8_1069)	Depositor
R, $R_{free}$	0.182 , 0.226 0.189 , 0.230	Depositor DCC
$R_{free}$ test set	1999 reflections (6.22%)	wwPDB-VP
Wilson B-factor (Å <sup>2</sup> )	24.2	Xtrriage
Anisotropy	0.246	Xtrriage
Bulk solvent $k_{sol}$ (e/Å <sup>3</sup> ), $B_{sol}$ (Å <sup>2</sup> )	0.34 , 42.0	EDS
L-test for twinning <sup>2</sup>	$\langle  L  \rangle = 0.46$ , $\langle L^2 \rangle = 0.28$	Xtrriage
Estimated twinning fraction	No twinning to report.	Xtrriage
$F_o, F_c$ correlation	0.95	EDS
Total number of atoms	2570	wwPDB-VP
Average B, all atoms (Å <sup>2</sup> )	37.0	wwPDB-VP

Xtrriage's analysis on translational NCS is as follows: *The largest off-origin peak in the Patterson function is 7.70% of the height of the origin peak. No significant pseudotranslation is detected.*

<sup>1</sup>Intensities estimated from amplitudes.

<sup>2</sup>Theoretical values of  $\langle |L| \rangle$ ,  $\langle L^2 \rangle$  for acentric reflections are 0.5, 0.333 respectively for untwinned datasets, and 0.375, 0.2 for perfectly twinned datasets.

## 5 Model quality [i](#)

### 5.1 Standard geometry [i](#)

Bond lengths and bond angles in the following residue types are not validated in this section: SO4, MES

The Z score for a bond length (or angle) is the number of standard deviations the observed value is removed from the expected value. A bond length (or angle) with  $|Z| > 5$  is considered an outlier worth inspection. RMSZ is the root-mean-square of all Z scores of the bond lengths (or angles).

Mol	Chain	Bond lengths		Bond angles	
		RMSZ	$\# Z  > 5$	RMSZ	$\# Z  > 5$
1	A	0.64	1/2429 (0.0%)	0.72	1/3273 (0.0%)

All (1) bond length outliers are listed below:

Mol	Chain	Res	Type	Atoms	Z	Observed(Å)	Ideal(Å)
1	A	125	CYS	CB-SG	-5.04	1.73	1.81

All (1) bond angle outliers are listed below:

Mol	Chain	Res	Type	Atoms	Z	Observed(°)	Ideal(°)
1	A	90	MET	CB-CG-SD	-5.09	97.12	112.40

There are no chirality outliers.

There are no planarity outliers.

### 5.2 Too-close contacts [i](#)

In the following table, the Non-H and H(model) columns list the number of non-hydrogen atoms and hydrogen atoms in the chain respectively. The H(added) column lists the number of hydrogen atoms added and optimized by MolProbity. The Clashes column lists the number of clashes within the asymmetric unit, whereas Symm-Clashes lists symmetry-related clashes.

Mol	Chain	Non-H	H(model)	H(added)	Clashes	Symm-Clashes
1	A	2371	0	2365	28	0
2	A	12	13	13	0	0
3	A	20	0	0	3	0
4	A	154	0	0	3	0
All	All	2557	13	2378	29	0

The all-atom clashscore is defined as the number of clashes found per 1000 atoms (including hydrogen atoms). The all-atom clashscore for this structure is 6.

All (29) close contacts within the same asymmetric unit are listed below, sorted by their clash magnitude.

Atom-1	Atom-2	Interatomic distance (Å)	Clash overlap (Å)
1:A:219:ASP:OD1	1:A:221:THR:N	1.81	1.12
1:A:251:GLN:NE2	1:A:255:GLN:HG3	1.91	0.85
3:A:505:SO4:O1	4:A:744:HOH:O	2.02	0.77
1:A:85:LYS:NZ	1:A:190:PHE:O	2.17	0.75
1:A:251:GLN:HE22	1:A:255:GLN:HG3	1.56	0.70
1:A:140:GLN:NE2	3:A:503:SO4:O1	2.26	0.69
1:A:250:SER:OG	4:A:729:HOH:O	2.11	0.68
1:A:251:GLN:N	1:A:251:GLN:OE1	2.27	0.68
1:A:219:ASP:OD1	1:A:219:ASP:C	2.34	0.66
1:A:83:LYS:NZ	3:A:504:SO4:O1	2.30	0.64
1:A:316:ARG:NE	1:A:321:GLU:OE2	2.28	0.63
1:A:90:MET:HG2	1:A:180:ILE:HD12	1.84	0.60
1:A:81:PRO:CB	1:A:82:PRO:HD2	2.32	0.60
1:A:187:THR:HG22	1:A:189:GLY:H	1.66	0.59
1:A:219:ASP:OD1	1:A:220:GLU:N	2.37	0.57
1:A:129:ASN:ND2	4:A:750:HOH:O	2.24	0.56
1:A:225:SER:HB2	1:A:227:GLU:OE1	2.06	0.55
1:A:369:LYS:HD2	1:A:374:TYR:CZ	2.42	0.54
1:A:227:GLU:H	1:A:227:GLU:CD	2.11	0.54
1:A:248:PHE:O	1:A:293:GLN:HA	2.07	0.53
1:A:385:ARG:O	1:A:389:GLN:HG3	2.10	0.52
1:A:187:THR:HG22	1:A:189:GLY:N	2.25	0.51
1:A:340:PHE:CD1	1:A:340:PHE:N	2.84	0.46
1:A:394:LEU:N	1:A:395:PRO:CD	2.78	0.46
1:A:369:LYS:CD	1:A:374:TYR:CZ	3.00	0.45
1:A:141:ARG:HD2	1:A:141:ARG:H	1.83	0.44
1:A:90:MET:HG2	1:A:180:ILE:CD1	2.47	0.43
1:A:81:PRO:CB	1:A:82:PRO:CD	2.95	0.43
1:A:246:HIS:NE2	1:A:319:GLY:O	2.52	0.42

There are no symmetry-related clashes.



## 5.3 Torsion angles [i](#)

### 5.3.1 Protein backbone [i](#)

In the following table, the Percentiles column shows the percent Ramachandran outliers of the chain as a percentile score with respect to all X-ray entries followed by that with respect to entries of similar resolution.

The Analysed column shows the number of residues for which the backbone conformation was analysed, and the total number of residues.

Mol	Chain	Analysed	Favoured	Allowed	Outliers	Percentiles
1	A	289/336 (86%)	285 (99%)	4 (1%)	0	100 100

There are no Ramachandran outliers to report.

### 5.3.2 Protein sidechains [i](#)

In the following table, the Percentiles column shows the percent sidechain outliers of the chain as a percentile score with respect to all X-ray entries followed by that with respect to entries of similar resolution.

The Analysed column shows the number of residues for which the sidechain conformation was analysed, and the total number of residues.

Mol	Chain	Analysed	Rotameric	Outliers	Percentiles
1	A	257/286 (90%)	251 (98%)	6 (2%)	45 31

All (6) residues with a non-rotameric sidechain are listed below:

Mol	Chain	Res	Type
1	A	108	GLN
1	A	141	ARG
1	A	213	LYS
1	A	217	VAL
1	A	219	ASP
1	A	340	PHE

Sometimes sidechains can be flipped to improve hydrogen bonding and reduce clashes. All (1) such sidechains are listed below:

Mol	Chain	Res	Type
1	A	140	GLN

### 5.3.3 RNA [i](#)

There are no RNA molecules in this entry.

## 5.4 Non-standard residues in protein, DNA, RNA chains [i](#)

There are no non-standard protein/DNA/RNA residues in this entry.

## 5.5 Carbohydrates [i](#)

There are no oligosaccharides in this entry.

## 5.6 Ligand geometry [i](#)

5 ligands are modelled in this entry.

In the following table, the Counts columns list the number of bonds (or angles) for which Mogul statistics could be retrieved, the number of bonds (or angles) that are observed in the model and the number of bonds (or angles) that are defined in the Chemical Component Dictionary. The Link column lists molecule types, if any, to which the group is linked. The Z score for a bond length (or angle) is the number of standard deviations the observed value is removed from the expected value. A bond length (or angle) with  $|Z| > 2$  is considered an outlier worth inspection. RMSZ is the root-mean-square of all Z scores of the bond lengths (or angles).

Mol	Type	Chain	Res	Link	Bond lengths			Bond angles		
					Counts	RMSZ	$\# Z  > 2$	Counts	RMSZ	$\# Z  > 2$
3	SO4	A	505	-	4,4,4	0.29	0	6,6,6	0.56	0
2	MES	A	501	-	12,12,12	1.78	1 (8%)	15,16,16	1.67	4 (26%)
3	SO4	A	504	-	4,4,4	0.26	0	6,6,6	0.13	0
3	SO4	A	503	-	4,4,4	0.27	0	6,6,6	0.37	0
3	SO4	A	502	-	4,4,4	0.23	0	6,6,6	0.57	0

In the following table, the Chirals column lists the number of chiral outliers, the number of chiral centers analysed, the number of these observed in the model and the number defined in the Chemical Component Dictionary. Similar counts are reported in the Torsion and Rings columns. '-' means no outliers of that kind were identified.

Mol	Type	Chain	Res	Link	Chirals	Torsions	Rings
2	MES	A	501	-	-	5/6/14/14	0/1/1/1

All (1) bond length outliers are listed below:

Mol	Chain	Res	Type	Atoms	Z	Observed(Å)	Ideal(Å)
2	A	501	MES	C8-S	-5.69	1.69	1.77

All (4) bond angle outliers are listed below:

Mol	Chain	Res	Type	Atoms	Z	Observed(°)	Ideal(°)
2	A	501	MES	C5-N4-C3	3.66	116.73	108.84
2	A	501	MES	O2S-S-C8	3.26	111.66	106.73
2	A	501	MES	O1S-S-C8	-2.37	103.14	106.73
2	A	501	MES	C6-C5-N4	2.15	113.39	110.12

There are no chirality outliers.

All (5) torsion outliers are listed below:

Mol	Chain	Res	Type	Atoms
2	A	501	MES	C7-C8-S-O3S
2	A	501	MES	C8-C7-N4-C3
2	A	501	MES	C7-C8-S-O1S
2	A	501	MES	C7-C8-S-O2S
2	A	501	MES	C8-C7-N4-C5

There are no ring outliers.

3 monomers are involved in 3 short contacts:

Mol	Chain	Res	Type	Clashes	Symm-Clashes
3	A	505	SO4	1	0
3	A	504	SO4	1	0
3	A	503	SO4	1	0

## 5.7 Other polymers [i](#)

There are no such residues in this entry.

## 5.8 Polymer linkage issues [i](#)

There are no chain breaks in this entry.

## 6 Fit of model and data [i](#)

### 6.1 Protein, DNA and RNA chains [i](#)

In the following table, the column labelled ‘#RSRZ> 2’ contains the number (and percentage) of RSRZ outliers, followed by percent RSRZ outliers for the chain as percentile scores relative to all X-ray entries and entries of similar resolution. The OWAB column contains the minimum, median, 95<sup>th</sup> percentile and maximum values of the occupancy-weighted average B-factor per residue. The column labelled ‘Q< 0.9’ lists the number of (and percentage) of residues with an average occupancy less than 0.9.

Mol	Chain	Analysed	<RSRZ>	#RSRZ>2	OWAB(Å <sup>2</sup> )	Q<0.9
1	A	296/336 (88%)	0.11	22 (7%) <span style="border: 1px solid red; padding: 2px;">22</span> <span style="border: 1px solid red; padding: 2px;">23</span>	16, 33, 68, 101	2 (0%)

All (22) RSRZ outliers are listed below:

Mol	Chain	Res	Type	RSRZ
1	A	190	PHE	4.9
1	A	340	PHE	4.5
1	A	254	PRO	4.4
1	A	355	PRO	4.2
1	A	252	LYS	4.0
1	A	189	GLY	3.9
1	A	196[A]	CYS	3.5
1	A	219	ASP	3.3
1	A	188	GLY	3.1
1	A	339	HIS	3.0
1	A	81	PRO	2.9
1	A	82	PRO	2.9
1	A	191	ASN	2.7
1	A	257	PRO	2.7
1	A	187	THR	2.7
1	A	108	GLN	2.6
1	A	102	ARG	2.5
1	A	251	GLN	2.5
1	A	253	GLY	2.4
1	A	132	GLU	2.1
1	A	255	GLN	2.0
1	A	357	ASP	2.0

### 6.2 Non-standard residues in protein, DNA, RNA chains [i](#)

There are no non-standard protein/DNA/RNA residues in this entry.

### 6.3 Carbohydrates [i](#)

There are no monosaccharides in this entry.

### 6.4 Ligands [i](#)

In the following table, the Atoms column lists the number of modelled atoms in the group and the number defined in the chemical component dictionary. The B-factors column lists the minimum, median, 95<sup>th</sup> percentile and maximum values of B factors of atoms in the group. The column labelled 'Q< 0.9' lists the number of atoms with occupancy less than 0.9.

Mol	Type	Chain	Res	Atoms	RSCC	RSR	B-factors(Å <sup>2</sup> )	Q<0.9
3	SO4	A	504	5/5	0.76	0.13	76,78,83,84	0
3	SO4	A	503	5/5	0.80	0.15	61,62,72,75	0
3	SO4	A	505	5/5	0.83	0.12	50,56,59,67	0
3	SO4	A	502	5/5	0.99	0.05	23,29,31,33	0
2	MES	A	501	12/12	0.99	0.05	19,30,39,47	0

### 6.5 Other polymers [i](#)

There are no such residues in this entry.