



# Full wwPDB X-ray Structure Validation Report ⓘ

Oct 22, 2024 – 07:14 AM EDT

PDB ID : 4IRZ  
Title : Crystal structure of A4b7 headpiece complexed with Fab Natalizumab  
Authors : Yu, Y.; Schurpf, T.; Springer, T.A.  
Deposited on : 2013-01-15  
Resolution : 2.84 Å(reported)

This is a Full wwPDB X-ray Structure Validation Report for a publicly released PDB entry.

We welcome your comments at [validation@mail.wwpdb.org](mailto:validation@mail.wwpdb.org)

A user guide is available at

<https://www.wwpdb.org/validation/2017/XrayValidationReportHelp>

with specific help available everywhere you see the ⓘ symbol.

The types of validation reports are described at

<http://www.wwpdb.org/validation/2017/FAQs#types>.

---

The following versions of software and data (see [references ⓘ](#)) were used in the production of this report:

MolProbity : 4.02b-467  
Mogul : 2022.3.0, CSD as543be (2022)  
Xtriage (Phenix) : 1.20.1  
EDS : 3.0  
Percentile statistics : 20231227.v01 (using entries in the PDB archive December 27th 2023)  
CCP4 : 9.0.003 (Gargrove)  
Density-Fitness : 1.0.11  
Ideal geometry (proteins) : Engh & Huber (2001)  
Ideal geometry (DNA, RNA) : Parkinson et al. (1996)  
Validation Pipeline (wwPDB-VP) : 2.39

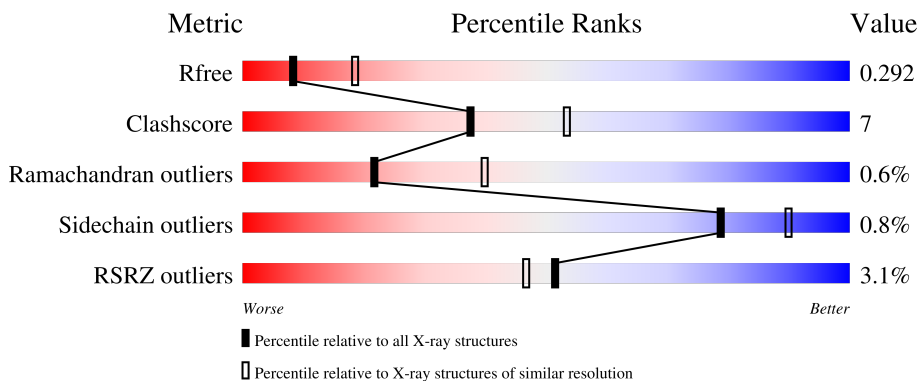
# 1 Overall quality at a glance

The following experimental techniques were used to determine the structure:

*X-RAY DIFFRACTION*

The reported resolution of this entry is 2.84 Å.

Percentile scores (ranging between 0-100) for global validation metrics of the entry are shown in the following graphic. The table shows the number of entries on which the scores are based.



Metric	Whole archive (#Entries)	Similar resolution (#Entries, resolution range(Å))
$R_{free}$	164625	1367 (2.86-2.82)
Clashscore	180529	1455 (2.86-2.82)
Ramachandran outliers	177936	1422 (2.86-2.82)
Sidechain outliers	177891	1423 (2.86-2.82)
RSRZ outliers	164620	1368 (2.86-2.82)

The table below summarises the geometric issues observed across the polymeric chains and their fit to the electron density. The red, orange, yellow and green segments of the lower bar indicate the fraction of residues that contain outliers for  $\geq 3$ , 2, 1 and 0 types of geometric quality criteria respectively. A grey segment represents the fraction of residues that are not modelled. The numeric value for each fraction is indicated below the corresponding segment, with a dot representing fractions  $\leq 5\%$ . The upper red bar (where present) indicates the fraction of residues that have poor fit to the electron density. The numeric value is given above the bar.

Mol	Chain	Length	Quality of chain
1	A	597	
2	L	210	
3	H	222	
4	B	3	

## 2 Entry composition [i](#)

There are 10 unique types of molecules in this entry. The entry contains 15763 atoms, of which 7752 are hydrogens and 0 are deuteriums.

In the tables below, the ZeroOcc column contains the number of atoms modelled with zero occupancy, the AltConf column contains the number of residues with at least one atom in alternate conformation and the Trace column contains the number of residues modelled with at most 2 atoms.

- Molecule 1 is a protein called Integrin alpha4 subunit.

Mol	Chain	Residues	Atoms					ZeroOcc	AltConf	Trace	
			Total	C	H	N	O				S
1	A	592	9051	2896	4454	794	884	23	38	3	0

- Molecule 2 is a protein called Fab Natalizumab light chain.

Mol	Chain	Residues	Atoms					ZeroOcc	AltConf	Trace	
			Total	C	H	N	O				S
2	L	208	3192	1017	1571	273	325	6	0	0	0

- Molecule 3 is a protein called Fab Natalizumab heavy chain.

Mol	Chain	Residues	Atoms					ZeroOcc	AltConf	Trace	
			Total	C	H	N	O				S
3	H	217	3274	1048	1612	278	327	9	0	2	0

- Molecule 4 is an oligosaccharide called beta-D-mannopyranose-(1-4)-2-acetamido-2-deoxy-beta-D-glucopyranose-(1-4)-2-acetamido-2-deoxy-beta-D-glucopyranose.



Mol	Chain	Residues	Atoms					ZeroOcc	AltConf	Trace
			Total	C	H	N	O			
4	B	3	73	22	34	2	15	0	0	0

- Molecule 5 is CALCIUM ION (three-letter code: CA) (formula: Ca).

Mol	Chain	Residues	Atoms		ZeroOcc	AltConf
5	A	3	Total	Ca	0	0
			3	3		

- Molecule 6 is 2-acetamido-2-deoxy-beta-D-glucopyranose (three-letter code: NAG) (formula:  $C_8H_{15}NO_6$ ).



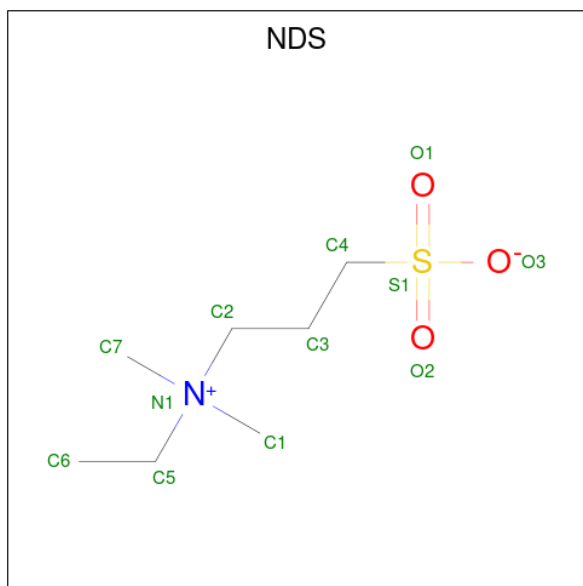
Mol	Chain	Residues	Atoms					ZeroOcc	AltConf
			Total	C	H	N	O		
6	A	1	Total	C	H	N	O	0	0
			27	8	13	1	5		
6	A	1	Total	C	H	N	O	0	0
			27	8	13	1	5		
6	A	1	Total	C	H	N	O	0	0
			28	8	14	1	5		
6	A	1	Total	C	H	N	O	0	0
			28	8	14	1	5		

- Molecule 7 is DI(HYDROXYETHYL)ETHER (three-letter code: PEG) (formula:  $C_4H_{10}O_3$ ).



Mol	Chain	Residues	Atoms				ZeroOcc	AltConf
			Total	C	H	O		
7	A	1	17	4	10	3	0	0

- Molecule 8 is ETHYL DIMETHYL AMMONIO PROPANE SULFONATE (three-letter code: NDS) (formula:  $C_7H_{17}NO_3S$ ).



Mol	Chain	Residues	Atoms					ZeroOcc	AltConf	
			Total	C	H	N	O			S
8	A	1	29	7	17	1	3	1	0	0

- Molecule 9 is SODIUM ION (three-letter code: NA) (formula: Na).

Mol	Chain	Residues	Atoms	ZeroOcc	AltConf
9	H	1	Total Na 1 1	0	0

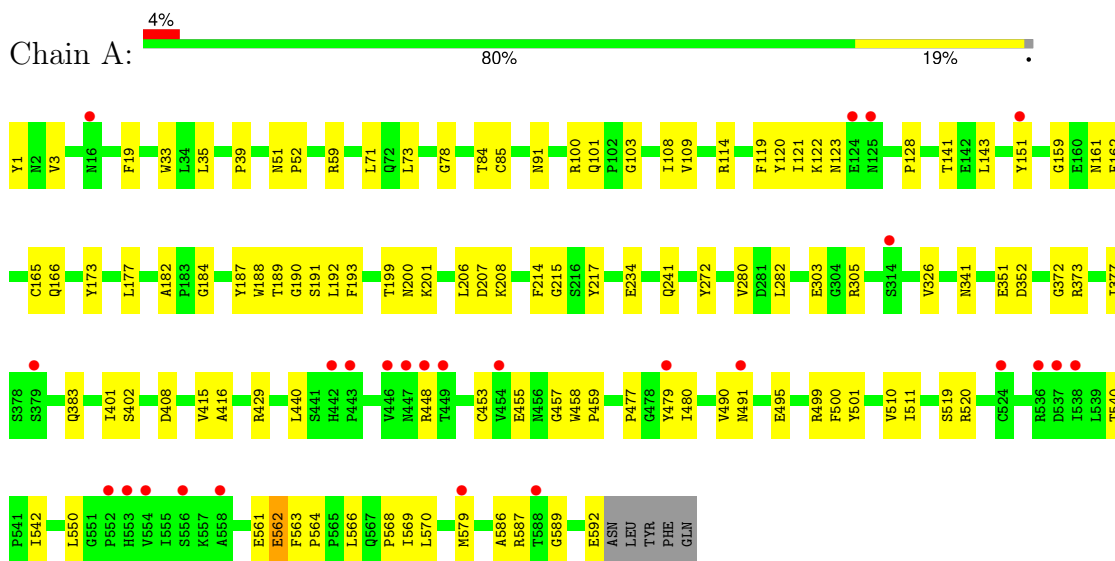
- Molecule 10 is water.

Mol	Chain	Residues	Atoms	ZeroOcc	AltConf
10	A	9	Total O 9 9	0	0
10	L	4	Total O 4 4	0	0

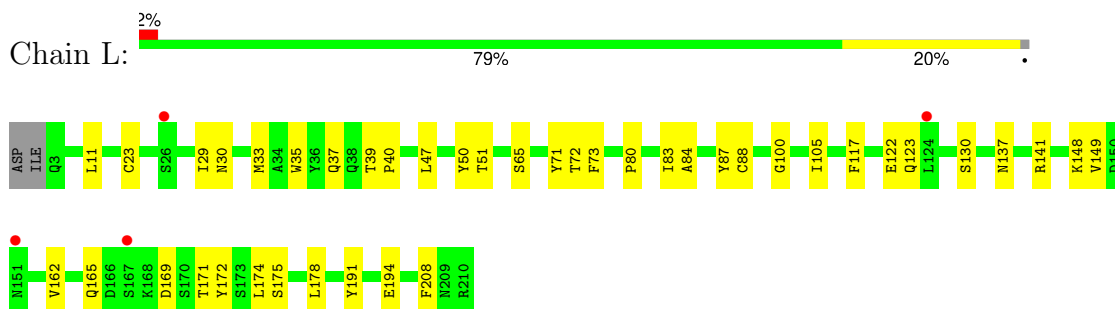
### 3 Residue-property plots [i](#)

These plots are drawn for all protein, RNA, DNA and oligosaccharide chains in the entry. The first graphic for a chain summarises the proportions of the various outlier classes displayed in the second graphic. The second graphic shows the sequence view annotated by issues in geometry and electron density. Residues are color-coded according to the number of geometric quality criteria for which they contain at least one outlier: green = 0, yellow = 1, orange = 2 and red = 3 or more. A red dot above a residue indicates a poor fit to the electron density ( $RSRZ > 2$ ). Stretches of 2 or more consecutive residues without any outlier are shown as a green connector. Residues present in the sample, but not in the model, are shown in grey.

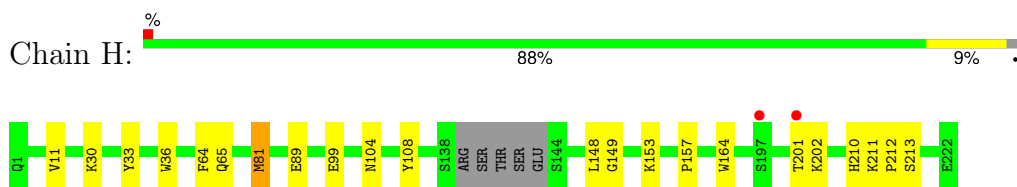
- Molecule 1: Integrin alpha4 subunit



- Molecule 2: Fab Natalizumab light chain



- Molecule 3: Fab Natalizumab heavy chain



- Molecule 4: beta-D-mannopyranose-(1-4)-2-acetamido-2-deoxy-beta-D-glucopyranose-(1-4)-2-acetamido-2-deoxy-beta-D-glucopyranose

Chain B:





## 4 Data and refinement statistics

Property	Value	Source
Space group	P 21 21 21	Depositor
Cell constants a, b, c, $\alpha$ , $\beta$ , $\gamma$	73.61Å 77.89Å 217.74Å 90.00° 90.00° 90.00°	Depositor
Resolution (Å)	44.62 – 2.84 44.62 – 2.84	Depositor EDS
% Data completeness (in resolution range)	99.7 (44.62-2.84) 99.7 (44.62-2.84)	Depositor EDS
$R_{merge}$	(Not available)	Depositor
$R_{sym}$	(Not available)	Depositor
$\langle I/\sigma(I) \rangle$ <sup>1</sup>	1.38 (at 2.86Å)	Xtrriage
Refinement program	PHENIX (phenix.refine: 1.8.1_1168)	Depositor
R, $R_{free}$	0.237 , 0.287 0.240 , 0.292	Depositor DCC
$R_{free}$ test set	1537 reflections (5.07%)	wwPDB-VP
Wilson B-factor (Å <sup>2</sup> )	54.4	Xtrriage
Anisotropy	0.477	Xtrriage
Bulk solvent $k_{sol}$ (e/Å <sup>3</sup> ), $B_{sol}$ (Å <sup>2</sup> )	0.36 , 52.4	EDS
L-test for twinning <sup>2</sup>	$\langle  L  \rangle = 0.47$ , $\langle L^2 \rangle = 0.30$	Xtrriage
Estimated twinning fraction	No twinning to report.	Xtrriage
$F_o, F_c$ correlation	0.91	EDS
Total number of atoms	15763	wwPDB-VP
Average B, all atoms (Å <sup>2</sup> )	70.0	wwPDB-VP

Xtrriage's analysis on translational NCS is as follows: *The largest off-origin peak in the Patterson function is 3.61% of the height of the origin peak. No significant pseudotranslation is detected.*

<sup>1</sup>Intensities estimated from amplitudes.

<sup>2</sup>Theoretical values of  $\langle |L| \rangle$ ,  $\langle L^2 \rangle$  for acentric reflections are 0.5, 0.333 respectively for untwinned datasets, and 0.375, 0.2 for perfectly twinned datasets.

## 5 Model quality [i](#)

### 5.1 Standard geometry [i](#)

Bond lengths and bond angles in the following residue types are not validated in this section: PEG, NDS, CA, NAG, NA, BMA

The Z score for a bond length (or angle) is the number of standard deviations the observed value is removed from the expected value. A bond length (or angle) with  $|Z| > 5$  is considered an outlier worth inspection. RMSZ is the root-mean-square of all Z scores of the bond lengths (or angles).

Mol	Chain	Bond lengths		Bond angles	
		RMSZ	# Z  >5	RMSZ	# Z  >5
1	A	0.23	0/4698	0.40	0/6361
2	L	0.23	0/1658	0.40	0/2253
3	H	0.23	0/1702	0.39	0/2317
All	All	0.23	0/8058	0.40	0/10931

There are no bond length outliers.

There are no bond angle outliers.

There are no chirality outliers.

There are no planarity outliers.

### 5.2 Too-close contacts [i](#)

In the following table, the Non-H and H(model) columns list the number of non-hydrogen atoms and hydrogen atoms in the chain respectively. The H(added) column lists the number of hydrogen atoms added and optimized by MolProbity. The Clashes column lists the number of clashes within the asymmetric unit, whereas Symm-Clashes lists symmetry-related clashes.

Mol	Chain	Non-H	H(model)	H(added)	Clashes	Symm-Clashes
1	A	4597	4454	4465	69	1
2	L	1621	1571	1574	28	0
3	H	1662	1612	1613	17	0
4	B	39	34	34	1	0
5	A	3	0	0	0	0
6	A	56	54	52	0	0
7	A	7	10	10	0	0
8	A	12	17	17	0	0
9	H	1	0	0	0	0
10	A	9	0	0	2	0

*Continued on next page...*

*Continued from previous page...*

Mol	Chain	Non-H	H(model)	H(added)	Clashes	Symm-Clashes
10	L	4	0	0	0	0
All	All	8011	7752	7765	109	1

The all-atom clashscore is defined as the number of clashes found per 1000 atoms (including hydrogen atoms). The all-atom clashscore for this structure is 7.

All (109) close contacts within the same asymmetric unit are listed below, sorted by their clash magnitude.

Atom-1	Atom-2	Interatomic distance (Å)	Clash overlap (Å)
2:L:169:ASP:OD2	2:L:171:THR:OG1	2.05	0.74
2:L:122:GLU:N	2:L:122:GLU:OE1	2.25	0.69
1:A:455:GLU:OE2	1:A:501:TYR:OH	2.14	0.66
1:A:499:ARG:NH2	1:A:540:THR:O	2.30	0.65
1:A:234:GLU:N	1:A:234:GLU:OE1	2.31	0.64
1:A:100:ARG:NH2	1:A:103:GLY:O	2.32	0.63
3:H:89:GLU:N	3:H:89:GLU:OE1	2.34	0.61
1:A:177:LEU:HD11	4:B:1:NAG:H82	1.84	0.58
1:A:490:VAL:HG22	1:A:491:ASN:H	1.69	0.58
1:A:1:TYR:HA	1:A:383:GLN:HB2	1.88	0.56
1:A:114:ARG:NH1	1:A:166:GLN:OE1	2.40	0.55
2:L:83:ILE:CD1	2:L:165:GLN:HB2	2.36	0.55
1:A:440:LEU:HB2	1:A:579[A]:MET:SD	2.48	0.54
2:L:29:ILE:HD11	2:L:71:TYR:CE2	2.43	0.53
1:A:429:ARG:CZ	1:A:566:LEU:HD21	2.39	0.52
1:A:448[B]:ARG:NH2	1:A:589:GLY:O	2.42	0.52
2:L:117:PHE:CE1	3:H:148:LEU:HA	2.45	0.51
1:A:189:THR:HG22	1:A:214:PHE:HA	1.92	0.51
1:A:373:ARG:NH2	10:A:705:HOH:O	2.45	0.50
1:A:35:LEU:CD1	1:A:108:ILE:HD13	2.40	0.50
2:L:80:PRO:HA	2:L:105:ILE:HD13	1.92	0.50
1:A:201:LYS:NZ	3:H:30:LYS:O	2.45	0.50
1:A:280:VAL:HG23	1:A:351:GLU:OE2	2.12	0.50
1:A:208:LYS:HE2	2:L:30:ASN:HB3	1.94	0.50
3:H:211:LYS:N	3:H:212:PRO:CD	2.75	0.50
2:L:39:THR:HG23	2:L:40:PRO:HD2	1.93	0.50
1:A:569:ILE:HG12	1:A:570:LEU:N	2.28	0.49
1:A:448[B]:ARG:HB2	1:A:448[B]:ARG:NH1	2.27	0.49
1:A:561:GLU:HG2	1:A:562:GLU:N	2.28	0.48
2:L:123:GLN:OE1	3:H:153:LYS:NZ	2.47	0.48
1:A:372:GLY:HA2	1:A:377:ILE:HG22	1.94	0.48
1:A:563:PHE:N	1:A:564:PRO:HD3	2.29	0.48

*Continued on next page...*

*Continued from previous page...*

Atom-1	Atom-2	Interatomic distance (Å)	Clash overlap (Å)
1:A:550:LEU:HG	1:A:570:LEU:HG	1.96	0.48
1:A:33:TRP:CZ3	1:A:59:ARG:HB2	2.49	0.48
1:A:303:GLU:N	1:A:303:GLU:OE2	2.47	0.47
1:A:408:ASP:CG	10:A:703:HOH:O	2.52	0.47
3:H:33:TYR:HB2	3:H:99:GLU:HB3	1.97	0.47
1:A:184:GLY:HA2	1:A:188:TRP:CE3	2.50	0.47
2:L:80:PRO:HA	2:L:105:ILE:CD1	2.44	0.47
3:H:11:VAL:HB	3:H:157:PRO:HG3	1.95	0.47
1:A:3:VAL:HG12	1:A:383:GLN:OE1	2.14	0.47
2:L:174:LEU:HD23	2:L:175:SER:N	2.29	0.47
2:L:83:ILE:O	2:L:84:ALA:HB2	2.15	0.47
1:A:85:CYS:HB2	1:A:151:TYR:OH	2.15	0.46
2:L:141:ARG:NH2	2:L:162:VAL:HG21	2.30	0.46
1:A:143:LEU:O	1:A:143:LEU:HG	2.15	0.46
1:A:100:ARG:HG2	1:A:101:GLN:N	2.31	0.45
1:A:305:ARG:HD3	1:A:326:VAL:HG12	1.98	0.45
2:L:23:CYS:HB3	2:L:33:MET:HE2	1.97	0.45
1:A:119:PHE:O	1:A:120:TYR:HB2	2.16	0.45
1:A:165:CYS:HB2	1:A:182:ALA:HB1	1.97	0.45
1:A:500:PHE:CE1	1:A:542:ILE:HG21	2.52	0.45
1:A:586:ALA:O	1:A:587:ARG:CB	2.64	0.45
3:H:210:HIS:ND1	3:H:213:SER:OG	2.24	0.45
1:A:429:ARG:NH2	1:A:566:LEU:HD21	2.31	0.45
1:A:519:SER:O	1:A:520:ARG:HB2	2.15	0.45
1:A:161:ASN:HB3	3:H:104:ASN:O	2.16	0.45
1:A:401:ILE:HG22	1:A:402:SER:N	2.32	0.45
2:L:33:MET:CE	2:L:88:CYS:HB2	2.47	0.44
1:A:121:ILE:O	1:A:123:ASN:N	2.49	0.44
1:A:215:GLY:O	1:A:241:GLN:HB2	2.18	0.44
1:A:510:VAL:HG22	1:A:511:ILE:N	2.32	0.44
1:A:341:ASN:O	1:A:352:ASP:O	2.35	0.44
1:A:477:PRO:HG2	1:A:568:PRO:HG2	2.00	0.44
3:H:81:MET:C	3:H:81:MET:SD	2.96	0.44
1:A:199:THR:O	1:A:200:ASN:HB2	2.18	0.44
1:A:448[B]:ARG:HB2	1:A:448[B]:ARG:CZ	2.47	0.44
2:L:37:GLN:HB2	2:L:47:LEU:HD11	1.99	0.44
1:A:480:ILE:CG1	1:A:550:LEU:HD22	2.48	0.43
2:L:65:SER:OG	2:L:72:THR:OG1	2.36	0.43
3:H:36:TRP:CE2	3:H:81:MET:HB2	2.52	0.43
3:H:64:PHE:O	3:H:65:GLN:C	2.57	0.43
2:L:130:SER:HA	2:L:178:LEU:O	2.19	0.43

*Continued on next page...*

Continued from previous page...

Atom-1	Atom-2	Interatomic distance (Å)	Clash overlap (Å)
1:A:51:ASN:N	1:A:52:PRO:CD	2.82	0.43
1:A:415:VAL:HG12	1:A:416:ALA:N	2.34	0.43
2:L:35:TRP:CE2	2:L:73:PHE:HB2	2.54	0.43
1:A:519:SER:O	1:A:520:ARG:CB	2.67	0.43
1:A:73:LEU:HD23	1:A:141:THR:HB	2.02	0.42
1:A:84:THR:O	1:A:84:THR:HG22	2.18	0.42
3:H:149:GLY:HA2	3:H:164:TRP:CZ2	2.54	0.42
1:A:182:ALA:O	1:A:190:GLY:HA2	2.19	0.42
2:L:148:LYS:NZ	2:L:194:GLU:OE2	2.50	0.42
1:A:586:ALA:O	1:A:587:ARG:HB3	2.18	0.42
1:A:457:GLY:O	1:A:459:PRO:HD3	2.19	0.42
1:A:108:ILE:HG22	1:A:109:VAL:N	2.35	0.42
2:L:149:VAL:HG13	2:L:191:TYR:CZ	2.55	0.42
2:L:141:ARG:NH1	2:L:172:TYR:CE1	2.88	0.41
2:L:191:TYR:HB2	2:L:208:PHE:CZ	2.55	0.41
2:L:11:LEU:C	2:L:11:LEU:HD12	2.40	0.41
1:A:35:LEU:HD12	1:A:108:ILE:HD13	2.02	0.41
1:A:108:ILE:CG2	1:A:109:VAL:N	2.82	0.41
1:A:162:PHE:CD2	1:A:193:PHE:HZ	2.38	0.41
1:A:191:SER:OG	1:A:192:LEU:N	2.54	0.41
2:L:39:THR:CG2	2:L:40:PRO:HD2	2.51	0.41
3:H:201:THR:OG1	3:H:202:LYS:N	2.54	0.41
1:A:71:LEU:HB3	1:A:141:THR:HG21	2.02	0.41
1:A:128:PRO:HB2	1:A:166:GLN:HG2	2.03	0.41
1:A:206:LEU:O	1:A:208:LYS:N	2.54	0.41
3:H:149:GLY:HA2	3:H:164:TRP:CH2	2.55	0.41
3:H:211:LYS:HB2	3:H:212:PRO:HD3	2.01	0.41
1:A:51:ASN:O	1:A:91:ASN:HA	2.21	0.41
2:L:87:TYR:CD1	2:L:100:GLY:HA2	2.56	0.41
1:A:282:LEU:HD13	1:A:377:ILE:HG23	2.03	0.40
2:L:33:MET:HE1	2:L:88:CYS:HB2	2.03	0.40
2:L:50:TYR:O	2:L:51:THR:HB	2.21	0.40
1:A:187:TYR:O	1:A:188:TRP:HB2	2.21	0.40
3:H:99:GLU:HG2	3:H:108:TYR:HB3	2.04	0.40
1:A:159:GLY:HA3	1:A:187:TYR:CE1	2.56	0.40
1:A:495[B]:GLU:OE1	1:A:495[B]:GLU:N	2.53	0.40

All (1) symmetry-related close contacts are listed below. The label for Atom-2 includes the symmetry operator and encoded unit-cell translations to be applied.

Atom-1	Atom-2	Interatomic distance (Å)	Clash overlap (Å)
1:A:217:TYR:OH	1:A:592:GLU:OE1[3_545]	2.15	0.05

### 5.3 Torsion angles [i](#)

#### 5.3.1 Protein backbone [i](#)

In the following table, the Percentiles column shows the percent Ramachandran outliers of the chain as a percentile score with respect to all X-ray entries followed by that with respect to entries of similar resolution.

The Analysed column shows the number of residues for which the backbone conformation was analysed, and the total number of residues.

Mol	Chain	Analysed	Favoured	Allowed	Outliers	Percentiles	
1	A	593/597 (99%)	524 (88%)	64 (11%)	5 (1%)	16	32
2	L	206/210 (98%)	195 (95%)	10 (5%)	1 (0%)	25	44
3	H	215/222 (97%)	206 (96%)	9 (4%)	0	100	100
All	All	1014/1029 (98%)	925 (91%)	83 (8%)	6 (1%)	22	40

All (6) Ramachandran outliers are listed below:

Mol	Chain	Res	Type
1	A	122	LYS
1	A	207	ASP
1	A	19	PHE
2	L	137	ASN
1	A	39	PRO
1	A	78	GLY

#### 5.3.2 Protein sidechains [i](#)

In the following table, the Percentiles column shows the percent sidechain outliers of the chain as a percentile score with respect to all X-ray entries followed by that with respect to entries of similar resolution.

The Analysed column shows the number of residues for which the sidechain conformation was analysed, and the total number of residues.

Mol	Chain	Analysed	Rotameric	Outliers	Percentiles	
1	A	498/500 (100%)	492 (99%)	6 (1%)	67	85

*Continued on next page...*

Continued from previous page...

Mol	Chain	Analysed	Rotameric	Outliers	Percentiles	
2	L	185/187 (99%)	185 (100%)	0	100	100
3	H	184/187 (98%)	183 (100%)	1 (0%)	86	94
All	All	867/874 (99%)	860 (99%)	7 (1%)	79	90

All (7) residues with a non-rotameric sidechain are listed below:

Mol	Chain	Res	Type
1	A	173	TYR
1	A	272	TYR
1	A	453	CYS
1	A	458	TRP
1	A	479	TYR
1	A	562	GLU
3	H	81	MET

Sometimes sidechains can be flipped to improve hydrogen bonding and reduce clashes. There are no such sidechains identified.

### 5.3.3 RNA [i](#)

There are no RNA molecules in this entry.

## 5.4 Non-standard residues in protein, DNA, RNA chains [i](#)

There are no non-standard protein/DNA/RNA residues in this entry.

## 5.5 Carbohydrates [i](#)

3 monosaccharides are modelled in this entry.

In the following table, the Counts columns list the number of bonds (or angles) for which Mogul statistics could be retrieved, the number of bonds (or angles) that are observed in the model and the number of bonds (or angles) that are defined in the Chemical Component Dictionary. The Link column lists molecule types, if any, to which the group is linked. The Z score for a bond length (or angle) is the number of standard deviations the observed value is removed from the expected value. A bond length (or angle) with  $|Z| > 2$  is considered an outlier worth inspection. RMSZ is the root-mean-square of all Z scores of the bond lengths (or angles).

Mol	Type	Chain	Res	Link	Bond lengths			Bond angles		
					Counts	RMSZ	# Z  > 2	Counts	RMSZ	# Z  > 2
4	NAG	B	1	1,4	14,14,15	0.51	0	17,19,21	1.04	0
4	NAG	B	2	4	14,14,15	0.52	0	17,19,21	0.68	0
4	BMA	B	3	4	11,11,12	0.61	0	15,15,17	0.61	0

In the following table, the Chirals column lists the number of chiral outliers, the number of chiral centers analysed, the number of these observed in the model and the number defined in the Chemical Component Dictionary. Similar counts are reported in the Torsion and Rings columns. '-' means no outliers of that kind were identified.

Mol	Type	Chain	Res	Link	Chirals	Torsions	Rings
4	NAG	B	1	1,4	-	0/6/23/26	0/1/1/1
4	NAG	B	2	4	-	0/6/23/26	0/1/1/1
4	BMA	B	3	4	-	0/2/19/22	0/1/1/1

There are no bond length outliers.

There are no bond angle outliers.

There are no chirality outliers.

There are no torsion outliers.

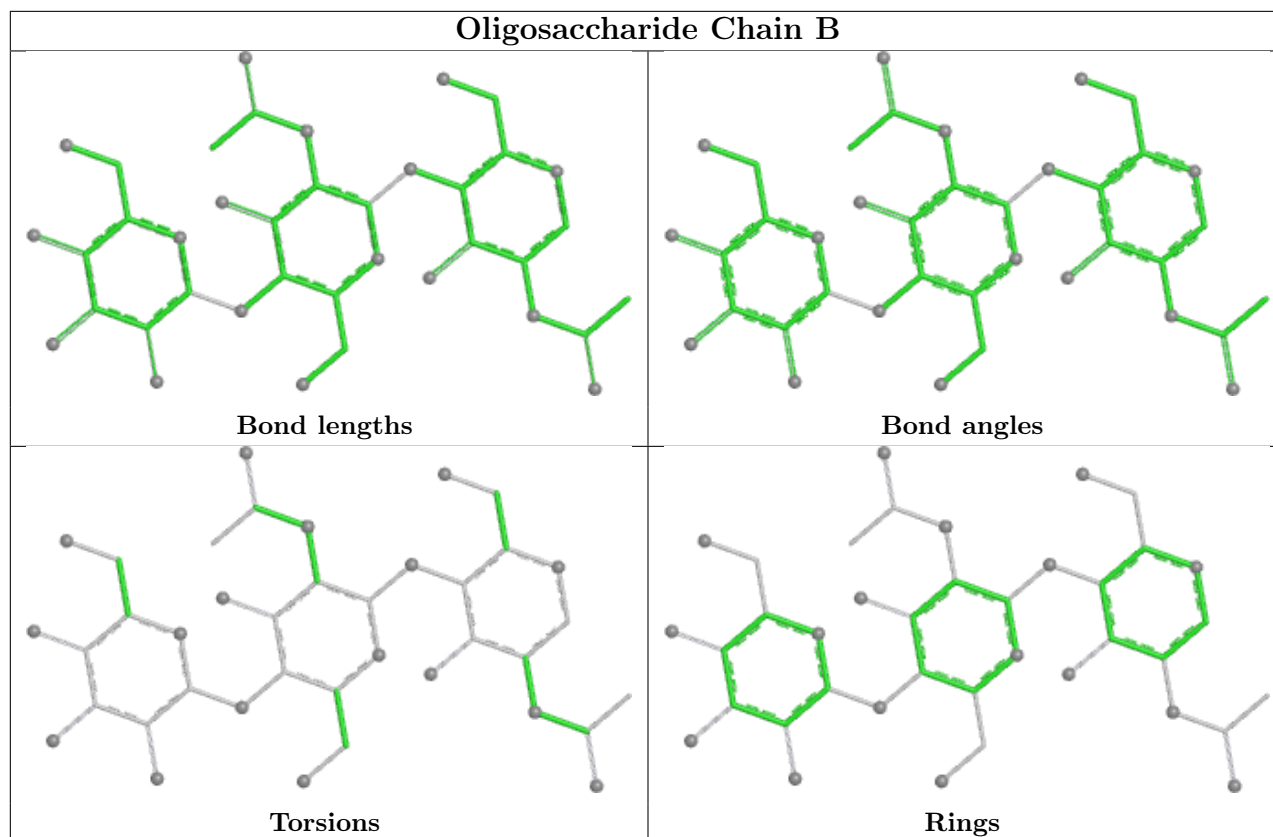
There are no ring outliers.

1 monomer is involved in 1 short contact:

Mol	Chain	Res	Type	Clashes	Symm-Clashes
4	B	1	NAG	1	0

The following is a two-dimensional graphical depiction of Mogul quality analysis of bond lengths, bond angles, torsion angles, and ring geometry for oligosaccharide.





## 5.6 Ligand geometry [i](#)

Of 10 ligands modelled in this entry, 4 are monoatomic - leaving 6 for Mogul analysis.

In the following table, the Counts columns list the number of bonds (or angles) for which Mogul statistics could be retrieved, the number of bonds (or angles) that are observed in the model and the number of bonds (or angles) that are defined in the Chemical Component Dictionary. The Link column lists molecule types, if any, to which the group is linked. The Z score for a bond length (or angle) is the number of standard deviations the observed value is removed from the expected value. A bond length (or angle) with  $|Z| > 2$  is considered an outlier worth inspection. RMSZ is the root-mean-square of all Z scores of the bond lengths (or angles).

Mol	Type	Chain	Res	Link	Bond lengths			Bond angles		
					Counts	RMSZ	$\# Z  > 2$	Counts	RMSZ	$\# Z  > 2$
8	NDS	A	612	-	11,11,11	1.02	0	15,16,16	1.79	6 (40%)
7	PEG	A	611	-	6,6,6	0.55	0	5,5,5	0.67	0
6	NAG	A	3105	1	14,14,15	0.52	0	17,19,21	0.54	0
6	NAG	A	3485	1	14,14,15	0.50	0	17,19,21	0.58	0
6	NAG	A	3505	1	14,14,15	0.53	0	17,19,21	0.63	0
6	NAG	A	3046	1	14,14,15	0.53	0	17,19,21	0.51	0

In the following table, the Chirals column lists the number of chiral outliers, the number of chiral centers analysed, the number of these observed in the model and the number defined in the

Chemical Component Dictionary. Similar counts are reported in the Torsion and Rings columns. '-' means no outliers of that kind were identified.

Mol	Type	Chain	Res	Link	Chirals	Torsions	Rings
8	NDS	A	612	-	-	0/11/11/11	-
7	PEG	A	611	-	-	0/4/4/4	-
6	NAG	A	3105	1	-	0/6/23/26	0/1/1/1
6	NAG	A	3485	1	-	0/6/23/26	0/1/1/1
6	NAG	A	3505	1	-	0/6/23/26	0/1/1/1
6	NAG	A	3046	1	-	0/6/23/26	0/1/1/1

There are no bond length outliers.

All (6) bond angle outliers are listed below:

Mol	Chain	Res	Type	Atoms	Z	Observed(°)	Ideal(°)
8	A	612	NDS	O2-S1-O1	-3.88	101.21	113.82
8	A	612	NDS	O1-S1-C4	3.09	111.39	106.73
8	A	612	NDS	O2-S1-C4	2.76	110.91	106.73
8	A	612	NDS	C3-C4-S1	-2.53	109.38	113.25
8	A	612	NDS	O3-S1-C4	2.16	110.24	106.00
8	A	612	NDS	C3-C2-N1	-2.11	111.05	115.35

There are no chirality outliers.

There are no torsion outliers.

There are no ring outliers.

No monomer is involved in short contacts.

## 5.7 Other polymers [i](#)

There are no such residues in this entry.

## 5.8 Polymer linkage issues [i](#)

There are no chain breaks in this entry.

## 6 Fit of model and data

### 6.1 Protein, DNA and RNA chains

In the following table, the column labelled ‘#RSRZ > 2’ contains the number (and percentage) of RSRZ outliers, followed by percent RSRZ outliers for the chain as percentile scores relative to all X-ray entries and entries of similar resolution. The OWAB column contains the minimum, median, 95<sup>th</sup> percentile and maximum values of the occupancy-weighted average B-factor per residue. The column labelled ‘Q < 0.9’ lists the number of (and percentage) of residues with an average occupancy less than 0.9.

Mol	Chain	Analysed	<RSRZ>	#RSRZ>2	OWAB(Å <sup>2</sup> )	Q<0.9
1	A	592/597 (99%)	0.16	26 (4%) 39 34	24, 60, 130, 225	11 (1%)
2	L	208/210 (99%)	0.16	4 (1%) 66 62	32, 71, 126, 192	0
3	H	217/222 (97%)	0.05	2 (0%) 81 79	25, 66, 126, 180	2 (0%)
All	All	1017/1029 (98%)	0.14	32 (3%) 51 47	24, 63, 127, 225	13 (1%)

All (32) RSRZ outliers are listed below:

Mol	Chain	Res	Type	RSRZ
1	A	448[A]	ARG	5.3
1	A	443	PRO	4.1
1	A	553	HIS	3.9
1	A	588	THR	3.7
1	A	447	ASN	3.4
1	A	454	VAL	2.8
1	A	537	ASP	2.8
1	A	449	THR	2.7
1	A	16	ASN	2.6
1	A	479	TYR	2.6
1	A	538	ILE	2.5
1	A	536	ARG	2.5
1	A	491	ASN	2.5
1	A	442	HIS	2.5
2	L	151	ASN	2.4
1	A	314	SER	2.4
1	A	579[A]	MET	2.4
1	A	151	TYR	2.3
2	L	124	LEU	2.3
1	A	125	ASN	2.2
1	A	446	VAL	2.2
2	L	167	SER	2.2
2	L	26	SER	2.2

*Continued on next page...*

*Continued from previous page...*

Mol	Chain	Res	Type	RSRZ
1	A	554	VAL	2.2
1	A	524	CYS	2.2
1	A	379	SER	2.2
3	H	201	THR	2.1
1	A	124	GLU	2.1
1	A	552	PRO	2.1
1	A	556	SER	2.1
1	A	558	ALA	2.1
3	H	197	SER	2.0

## 6.2 Non-standard residues in protein, DNA, RNA chains [i](#)

There are no non-standard protein/DNA/RNA residues in this entry.

## 6.3 Carbohydrates [i](#)

SUGAR-RSR INFOmissingINFO

## 6.4 Ligands [i](#)

In the following table, the Atoms column lists the number of modelled atoms in the group and the number defined in the chemical component dictionary. The B-factors column lists the minimum, median, 95<sup>th</sup> percentile and maximum values of B factors of atoms in the group. The column labelled 'Q< 0.9' lists the number of atoms with occupancy less than 0.9.

Mol	Type	Chain	Res	Atoms	RSCC	RSR	B-factors( $\text{\AA}^2$ )	Q<0.9
6	NAG	A	3105	14/15	0.59	0.13	75,93,111,112	0
6	NAG	A	3505	14/15	0.78	0.15	42,52,63,67	28
7	PEG	A	611	7/7	0.78	0.25	55,66,71,73	17
6	NAG	A	3485	14/15	0.79	0.20	55,67,77,80	28
6	NAG	A	3046	14/15	0.82	0.11	79,91,110,110	0
8	NDS	A	612	12/12	0.87	0.19	59,76,94,94	0
9	NA	H	301	1/1	0.90	0.13	57,57,57,57	0
5	CA	A	2006	1/1	0.96	0.05	57,57,57,57	0
5	CA	A	2007	1/1	0.99	0.02	44,44,44,44	0
5	CA	A	2005	1/1	0.99	0.04	55,55,55,55	0

## 6.5 Other polymers [i](#)

There are no such residues in this entry.