



Full wwPDB X-ray Structure Validation Report ⓘ

Feb 18, 2024 – 11:51 AM EST

PDB ID : 4EZD
Title : Crystal Structure of the UT-B Urea Transporter from Bos Taurus Bound to Selenourea
Authors : Cao, Y.; Levin, E.J.; Zhou, M.; New York Consortium on Membrane Protein Structure (NYCOMPS)
Deposited on : 2012-05-02
Resolution : 2.50 Å(reported)

This is a Full wwPDB X-ray Structure Validation Report for a publicly released PDB entry.

We welcome your comments at validation@mail.wwpdb.org

A user guide is available at

<https://www.wwpdb.org/validation/2017/XrayValidationReportHelp>

with specific help available everywhere you see the ⓘ symbol.

The types of validation reports are described at

<http://www.wwpdb.org/validation/2017/FAQs#types>.

The following versions of software and data (see [references ⓘ](#)) were used in the production of this report:

MolProbity : 4.02b-467
Mogul : 1.8.5 (274361), CSD as541be (2020)
Xtriage (Phenix) : 1.13
EDS : 2.36
buster-report : 1.1.7 (2018)
Percentile statistics : 20191225.v01 (using entries in the PDB archive December 25th 2019)
Refmac : 5.8.0158
CCP4 : 7.0.044 (Gargrove)
Ideal geometry (proteins) : Engh & Huber (2001)
Ideal geometry (DNA, RNA) : Parkinson et al. (1996)
Validation Pipeline (wwPDB-VP) : 2.36

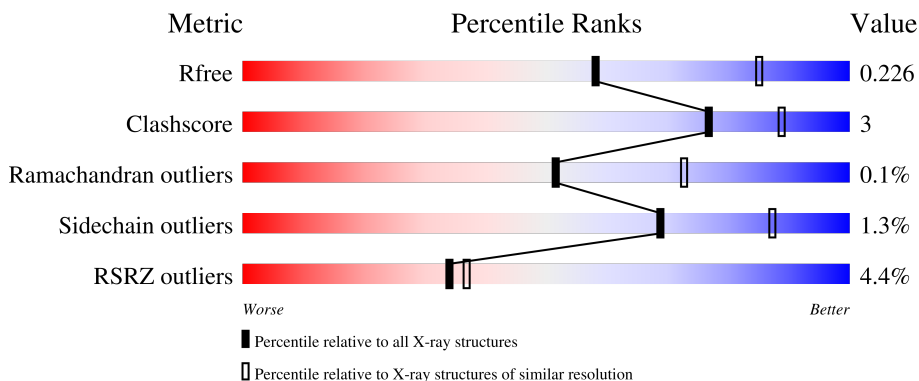
1 Overall quality at a glance i

The following experimental techniques were used to determine the structure:

X-RAY DIFFRACTION

The reported resolution of this entry is 2.50 Å.

Percentile scores (ranging between 0-100) for global validation metrics of the entry are shown in the following graphic. The table shows the number of entries on which the scores are based.



Metric	Whole archive (#Entries)	Similar resolution (#Entries, resolution range(Å))
R_{free}	130704	4661 (2.50-2.50)
Clashscore	141614	5346 (2.50-2.50)
Ramachandran outliers	138981	5231 (2.50-2.50)
Sidechain outliers	138945	5233 (2.50-2.50)
RSRZ outliers	127900	4559 (2.50-2.50)

The table below summarises the geometric issues observed across the polymeric chains and their fit to the electron density. The red, orange, yellow and green segments of the lower bar indicate the fraction of residues that contain outliers for ≥ 3 , 2, 1 and 0 types of geometric quality criteria respectively. A grey segment represents the fraction of residues that are not modelled. The numeric value for each fraction is indicated below the corresponding segment, with a dot representing fractions $\leq 5\%$. The upper red bar (where present) indicates the fraction of residues that have poor fit to the electron density. The numeric value is given above the bar.

Mol	Chain	Length	Quality of chain
1	A	384	
1	B	384	
1	C	384	

The following table lists non-polymeric compounds, carbohydrate monomers and non-standard

residues in protein, DNA, RNA chains that are outliers for geometric or electron-density-fit criteria:

Mol	Type	Chain	Res	Chirality	Geometry	Clashes	Electron density
4	BOG	C	410	-	-	-	X
5	SPL	B	408	-	-	-	X

2 Entry composition [i](#)

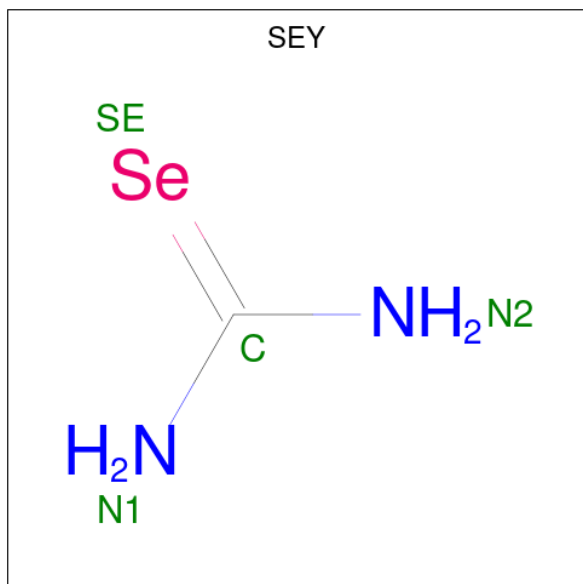
There are 6 unique types of molecules in this entry. The entry contains 8485 atoms, of which 0 are hydrogens and 0 are deuteriums.

In the tables below, the ZeroOcc column contains the number of atoms modelled with zero occupancy, the AltConf column contains the number of residues with at least one atom in alternate conformation and the Trace column contains the number of residues modelled with at most 2 atoms.

- Molecule 1 is a protein called Urea transporter 1.

Mol	Chain	Residues	Atoms					ZeroOcc	AltConf	Trace
			Total	C	N	O	S			
1	A	345	Total 2623	C 1735	N 407	O 462	S 19	0	0	0
1	B	346	Total 2634	C 1741	N 411	O 463	S 19	0	0	0
1	C	346	Total 2634	C 1741	N 411	O 463	S 19	0	0	0

- Molecule 2 is selenourea (three-letter code: SEY) (formula: CH₄N₂Se).



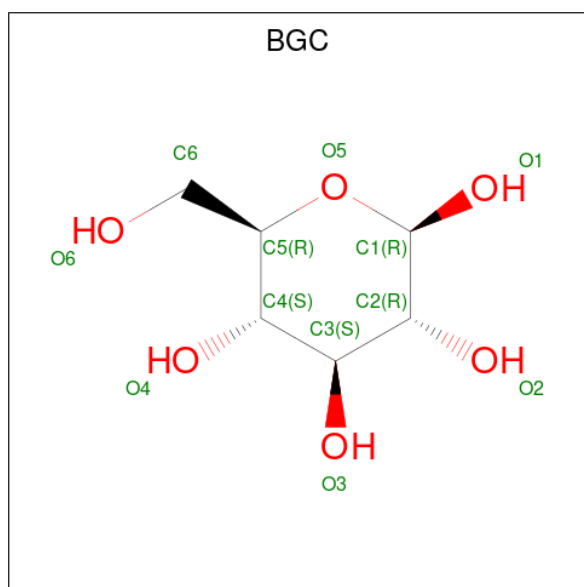
Mol	Chain	Residues	Atoms				ZeroOcc	AltConf
			Total	C	N	Se		
2	A	1	Total 4	C 1	N 2	Se 1	0	0
2	A	1	Total 4	C 1	N 2	Se 1	0	0
2	B	1	Total 4	C 1	N 2	Se 1	0	0

Continued on next page...

Continued from previous page...

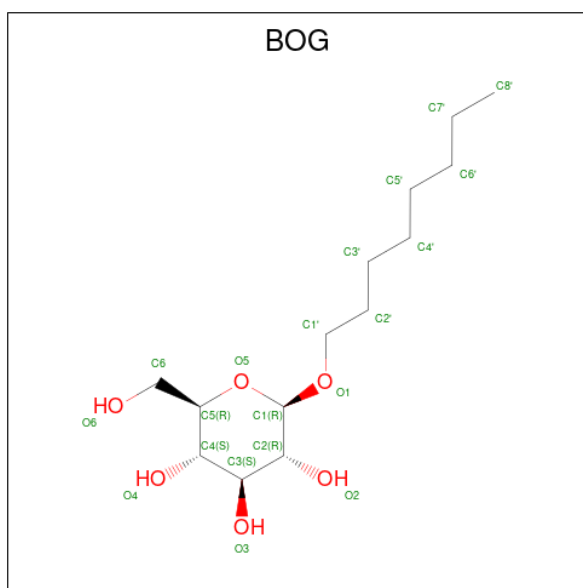
Mol	Chain	Residues	Atoms				ZeroOcc	AltConf
2	B	1	Total	C	N	Se	0	0
			4	1	2	1		
2	C	1	Total	C	N	Se	0	0
			4	1	2	1		
2	C	1	Total	C	N	Se	0	0
			4	1	2	1		

- Molecule 3 is beta-D-glucopyranose (three-letter code: BGC) (formula: C₆H₁₂O₆).



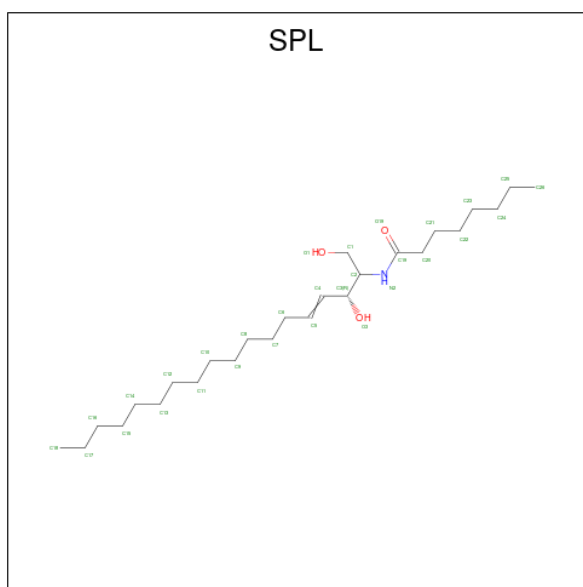
Mol	Chain	Residues	Atoms			ZeroOcc	AltConf
3	A	1	Total	C	O	0	0
			12	6	6		
3	A	1	Total	C	O	0	0
			12	6	6		
3	B	1	Total	C	O	0	0
			12	6	6		
3	B	1	Total	C	O	0	0
			12	6	6		
3	B	1	Total	C	O	0	0
			12	6	6		
3	C	1	Total	C	O	0	0
			12	6	6		
3	C	1	Total	C	O	0	0
			12	6	6		
3	C	1	Total	C	O	0	0
			12	6	6		

- Molecule 4 is octyl beta-D-glucopyranoside (three-letter code: BOG) (formula: $C_{14}H_{28}O_6$).



Mol	Chain	Residues	Atoms	ZeroOcc	AltConf
4	A	1	Total C O 20 14 6	0	0
4	A	1	Total C O 20 14 6	0	0
4	A	1	Total C O 20 14 6	0	0
4	B	1	Total C O 20 14 6	0	0
4	B	1	Total C O 20 14 6	0	0
4	C	1	Total C O 20 14 6	0	0
4	C	1	Total C O 20 14 6	0	0
4	C	1	Total C O 20 14 6	0	0
4	C	1	Total C O 20 14 6	0	0
4	C	1	Total C O 20 14 6	0	0

- Molecule 5 is OCTANOIC ACID (2-HYDROXY-1-HYDROXYMETHYL-HEPTADEC-3-ENYL)-AMIDE (three-letter code: SPL) (formula: $C_{26}H_{51}NO_3$).



Mol	Chain	Residues	Atoms				ZeroOcc	AltConf
5	A	1	Total	C	N	O	0	0
			30	26	1	3		
5	A	1	Total	C	N	O	0	0
			30	26	1	3		
5	B	1	Total	C	N	O	0	0
			30	26	1	3		

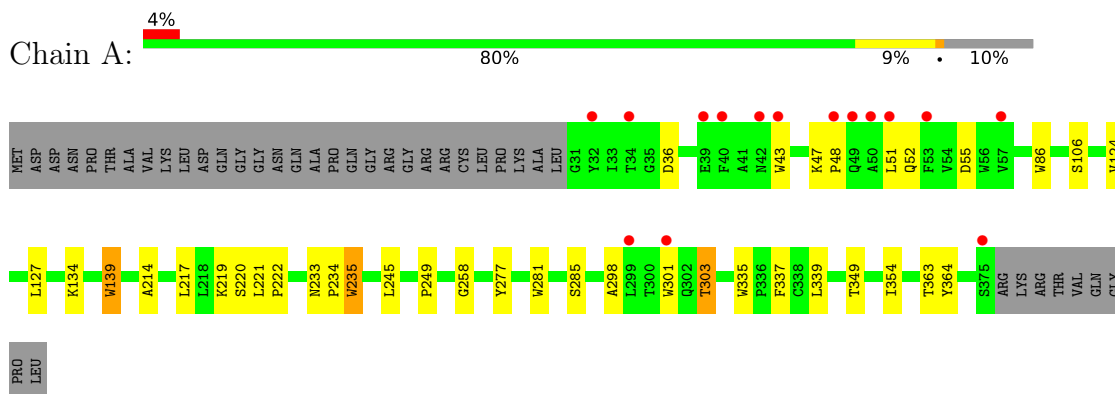
- Molecule 6 is water.

Mol	Chain	Residues	Atoms		ZeroOcc	AltConf
6	A	60	Total	O	0	0
			60	60		
6	B	64	Total	O	0	0
			64	64		
6	C	60	Total	O	0	0
			60	60		

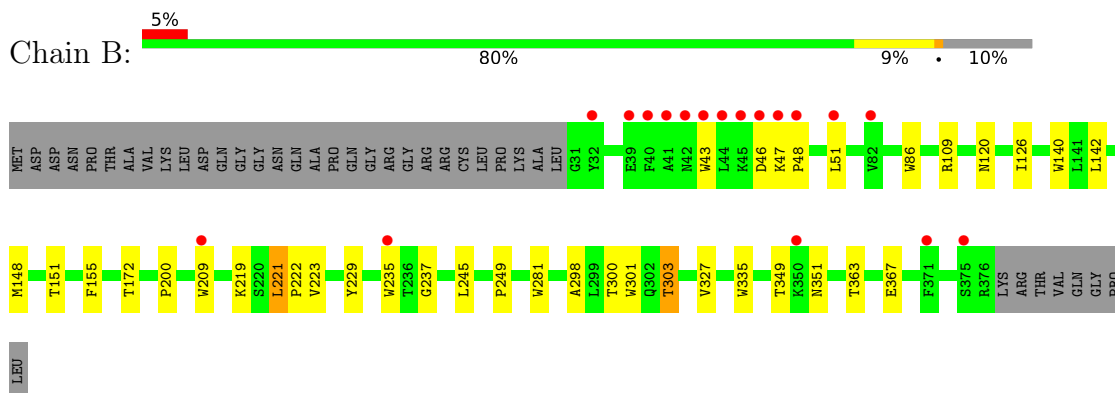
3 Residue-property plots [i](#)

These plots are drawn for all protein, RNA, DNA and oligosaccharide chains in the entry. The first graphic for a chain summarises the proportions of the various outlier classes displayed in the second graphic. The second graphic shows the sequence view annotated by issues in geometry and electron density. Residues are color-coded according to the number of geometric quality criteria for which they contain at least one outlier: green = 0, yellow = 1, orange = 2 and red = 3 or more. A red dot above a residue indicates a poor fit to the electron density ($RSRZ > 2$). Stretches of 2 or more consecutive residues without any outlier are shown as a green connector. Residues present in the sample, but not in the model, are shown in grey.

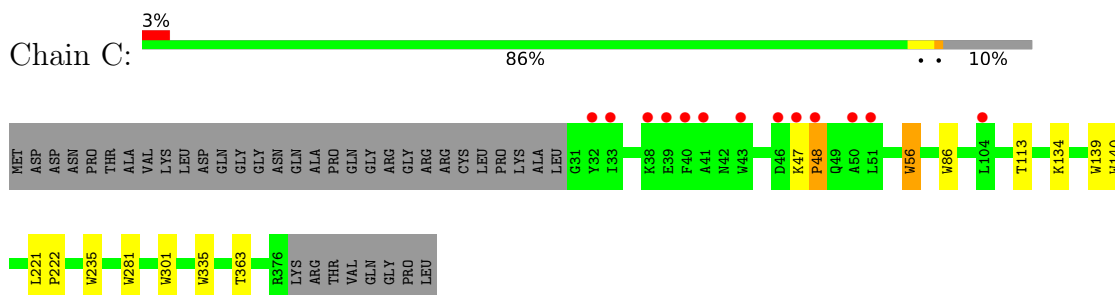
- Molecule 1: Urea transporter 1



- Molecule 1: Urea transporter 1



- Molecule 1: Urea transporter 1



4 Data and refinement statistics

Property	Value	Source
Space group	P 1 21 1	Depositor
Cell constants a, b, c, α , β , γ	75.00Å 106.23Å 105.82Å 90.00° 98.18° 90.00°	Depositor
Resolution (Å)	47.37 – 2.50 47.37 – 2.50	Depositor EDS
% Data completeness (in resolution range)	99.8 (47.37-2.50) 99.8 (47.37-2.50)	Depositor EDS
R_{merge}	0.17	Depositor
R_{sym}	(Not available)	Depositor
$\langle I/\sigma(I) \rangle$ ¹	2.49 (at 2.51Å)	Xtrriage
Refinement program	REFMAC	Depositor
R, R_{free}	0.197 , 0.229 0.195 , 0.226	Depositor DCC
R_{free} test set	2831 reflections (4.98%)	wwPDB-VP
Wilson B-factor (Å ²)	43.3	Xtrriage
Anisotropy	0.315	Xtrriage
Bulk solvent k_{sol} (e/Å ³), B_{sol} (Å ²)	0.33 , 45.0	EDS
L-test for twinning ²	$\langle L \rangle = 0.50$, $\langle L^2 \rangle = 0.33$	Xtrriage
Estimated twinning fraction	No twinning to report.	Xtrriage
F_o, F_c correlation	0.94	EDS
Total number of atoms	8485	wwPDB-VP
Average B, all atoms (Å ²)	51.0	wwPDB-VP

Xtrriage's analysis on translational NCS is as follows: *The largest off-origin peak in the Patterson function is 4.72% of the height of the origin peak. No significant pseudotranslation is detected.*

¹Intensities estimated from amplitudes.

²Theoretical values of $\langle |L| \rangle$, $\langle L^2 \rangle$ for acentric reflections are 0.5, 0.333 respectively for untwinned datasets, and 0.375, 0.2 for perfectly twinned datasets.

5 Model quality [i](#)

5.1 Standard geometry [i](#)

Bond lengths and bond angles in the following residue types are not validated in this section: BGC, SPL, BOG, SEY

The Z score for a bond length (or angle) is the number of standard deviations the observed value is removed from the expected value. A bond length (or angle) with $|Z| > 5$ is considered an outlier worth inspection. RMSZ is the root-mean-square of all Z scores of the bond lengths (or angles).

Mol	Chain	Bond lengths		Bond angles	
		RMSZ	# $ Z > 5$	RMSZ	# $ Z > 5$
1	A	0.58	7/2699 (0.3%)	0.55	0/3699
1	B	0.58	8/2710 (0.3%)	0.55	0/3713
1	C	0.58	7/2710 (0.3%)	0.56	0/3713
All	All	0.58	22/8119 (0.3%)	0.55	0/11125

All (22) bond length outliers are listed below:

Mol	Chain	Res	Type	Atoms	Z	Observed(Å)	Ideal(Å)
1	C	335	TRP	CD2-CE2	5.51	1.48	1.41
1	A	335	TRP	CD2-CE2	5.39	1.47	1.41
1	B	335	TRP	CD2-CE2	5.39	1.47	1.41
1	B	281	TRP	CD2-CE2	5.36	1.47	1.41
1	A	301	TRP	CD2-CE2	5.32	1.47	1.41
1	C	86	TRP	CD2-CE2	5.25	1.47	1.41
1	C	301	TRP	CD2-CE2	5.24	1.47	1.41
1	C	56	TRP	CD2-CE2	5.24	1.47	1.41
1	C	235	TRP	CD2-CE2	5.23	1.47	1.41
1	B	140	TRP	CD2-CE2	5.22	1.47	1.41
1	C	140	TRP	CD2-CE2	5.18	1.47	1.41
1	B	43	TRP	CD2-CE2	5.17	1.47	1.41
1	B	301	TRP	CD2-CE2	5.17	1.47	1.41
1	A	281	TRP	CD2-CE2	5.16	1.47	1.41
1	C	281	TRP	CD2-CE2	5.12	1.47	1.41
1	A	86	TRP	CD2-CE2	5.11	1.47	1.41
1	A	43	TRP	CD2-CE2	5.04	1.47	1.41
1	A	139	TRP	CD2-CE2	5.03	1.47	1.41
1	B	86	TRP	CD2-CE2	5.03	1.47	1.41
1	A	235	TRP	CD2-CE2	5.01	1.47	1.41
1	B	235	TRP	CD2-CE2	5.00	1.47	1.41
1	B	209	TRP	CD2-CE2	5.00	1.47	1.41

There are no bond angle outliers.

There are no chirality outliers.

There are no planarity outliers.

5.2 Too-close contacts [i](#)

In the following table, the Non-H and H(model) columns list the number of non-hydrogen atoms and hydrogen atoms in the chain respectively. The H(added) column lists the number of hydrogen atoms added and optimized by MolProbity. The Clashes column lists the number of clashes within the asymmetric unit, whereas Symm-Clashes lists symmetry-related clashes.

Mol	Chain	Non-H	H(model)	H(added)	Clashes	Symm-Clashes
1	A	2623	0	2665	22	0
1	B	2634	0	2678	22	0
1	C	2634	0	2678	5	0
2	A	8	0	0	0	0
2	B	8	0	0	0	0
2	C	8	0	0	0	0
3	A	24	0	24	1	0
3	B	36	0	36	0	0
3	C	36	0	36	1	0
4	A	60	0	84	4	0
4	B	40	0	56	0	0
4	C	100	0	140	1	0
5	A	60	0	102	1	0
5	B	30	0	51	0	0
6	A	60	0	0	1	0
6	B	64	0	0	0	0
6	C	60	0	0	0	0
All	All	8485	0	8550	50	0

The all-atom clashscore is defined as the number of clashes found per 1000 atoms (including hydrogen atoms). The all-atom clashscore for this structure is 3.

All (50) close contacts within the same asymmetric unit are listed below, sorted by their clash magnitude.

Atom-1	Atom-2	Interatomic distance (Å)	Clash overlap (Å)
1:B:349:THR:HG22	1:B:351:ASN:H	1.24	1.02
1:C:47:LYS:HB3	1:C:48:PRO:HD2	1.52	0.92
1:B:151:THR:CG2	1:B:155:PHE:CE2	2.66	0.78
1:A:363:THR:HG23	1:A:364:TYR:H	1.49	0.77
1:B:349:THR:HG22	1:B:351:ASN:N	2.00	0.76

Continued on next page...

Continued from previous page...

Atom-1	Atom-2	Interatomic distance (Å)	Clash overlap (Å)
1:A:349:THR:HG21	1:A:354:ILE:HB	1.75	0.69
1:A:47:LYS:HB3	1:A:48:PRO:HD2	1.78	0.65
1:B:151:THR:HG22	1:B:155:PHE:CD2	2.32	0.64
1:B:151:THR:HG21	1:B:155:PHE:CE2	2.35	0.62
1:B:151:THR:HG21	1:B:155:PHE:HE2	1.64	0.62
1:B:298:ALA:O	1:B:303:THR:HG21	2.03	0.59
1:B:47:LYS:HB3	1:B:48:PRO:HD2	1.84	0.58
1:A:221:LEU:HB3	1:A:222:PRO:HD3	1.86	0.57
1:A:258:GLY:O	1:A:285:SER:HB3	2.06	0.56
1:B:151:THR:CG2	1:B:155:PHE:CD2	2.89	0.56
1:B:148:MET:O	1:B:151:THR:HB	2.07	0.54
1:A:220:SER:OG	1:A:277:TYR:HA	2.08	0.52
1:A:363:THR:HG22	6:A:501:HOH:O	2.09	0.52
1:C:139:TRP:HZ2	3:C:405:BGC:H4	1.75	0.52
1:C:221:LEU:HB3	1:C:222:PRO:CD	2.40	0.51
1:B:221:LEU:HB3	1:B:222:PRO:CD	2.40	0.51
1:A:221:LEU:HB3	1:A:222:PRO:CD	2.42	0.50
1:A:339:LEU:HB3	5:A:408:SPL:H92	1.94	0.48
1:A:298:ALA:O	1:A:303:THR:HG21	2.14	0.48
1:A:52:GLN:O	1:A:55:ASP:HB3	2.15	0.47
1:A:36:ASP:HB2	1:A:364:TYR:HE1	1.80	0.46
1:A:134:LYS:NZ	4:A:407:BOG:H61	2.30	0.46
1:B:222:PRO:O	1:B:237:GLY:HA3	2.16	0.46
1:A:219:LYS:HE2	4:A:405:BOG:H1'2	1.97	0.45
1:A:363:THR:HG23	1:A:364:TYR:N	2.25	0.44
4:C:407:BOG:H62	4:C:410:BOG:H62	1.98	0.44
1:C:56:TRP:CD1	1:C:113:THR:HA	2.53	0.43
1:B:200:PRO:HG3	1:B:327:VAL:HA	1.99	0.43
1:A:235:TRP:CE2	4:A:405:BOG:H2'2	2.53	0.43
1:A:214:ALA:HB2	4:A:406:BOG:H1'2	2.00	0.43
1:B:221:LEU:HB3	1:B:222:PRO:HD3	2.02	0.42
1:B:151:THR:HG22	1:B:155:PHE:HD2	1.83	0.42
1:A:245:LEU:HD12	1:A:249:PRO:HA	2.02	0.42
1:A:217:LEU:O	1:A:220:SER:HB2	2.20	0.41
1:B:219:LYS:O	1:B:223:VAL:HG23	2.21	0.41
1:B:363:THR:CG2	1:B:367:GLU:HB3	2.51	0.41
1:B:126:ILE:HG21	1:B:229:TYR:O	2.21	0.41
1:B:109:ARG:HA	1:B:109:ARG:HD2	1.87	0.41
1:B:245:LEU:HD12	1:B:249:PRO:HA	2.02	0.41
1:B:300:THR:OG1	1:B:303:THR:HB	2.21	0.40
1:A:139:TRP:HZ2	3:A:403:BGC:H6C1	1.87	0.40

Continued on next page...

Continued from previous page...

Atom-1	Atom-2	Interatomic distance (Å)	Clash overlap (Å)
1:A:233:ASN:HA	1:A:234:PRO:HD2	1.95	0.40
1:B:120:ASN:OD1	1:B:172:THR:HA	2.20	0.40
1:A:127:LEU:HD13	1:A:127:LEU:HA	1.94	0.40
1:C:134:LYS:HA	1:C:134:LYS:HD2	1.95	0.40

There are no symmetry-related clashes.

5.3 Torsion angles [i](#)

5.3.1 Protein backbone [i](#)

In the following table, the Percentiles column shows the percent Ramachandran outliers of the chain as a percentile score with respect to all X-ray entries followed by that with respect to entries of similar resolution.

The Analysed column shows the number of residues for which the backbone conformation was analysed, and the total number of residues.

Mol	Chain	Analysed	Favoured	Allowed	Outliers	Percentiles	
1	A	343/384 (89%)	333 (97%)	10 (3%)	0	100	100
1	B	344/384 (90%)	336 (98%)	8 (2%)	0	100	100
1	C	344/384 (90%)	336 (98%)	7 (2%)	1 (0%)	41	61
All	All	1031/1152 (90%)	1005 (98%)	25 (2%)	1 (0%)	51	73

All (1) Ramachandran outliers are listed below:

Mol	Chain	Res	Type
1	C	48	PRO

5.3.2 Protein sidechains [i](#)

In the following table, the Percentiles column shows the percent sidechain outliers of the chain as a percentile score with respect to all X-ray entries followed by that with respect to entries of similar resolution.

The Analysed column shows the number of residues for which the sidechain conformation was analysed, and the total number of residues.

Mol	Chain	Analysed	Rotameric	Outliers	Percentiles	
1	A	288/319 (90%)	283 (98%)	5 (2%)	60	82
1	B	289/319 (91%)	284 (98%)	5 (2%)	60	82
1	C	289/319 (91%)	288 (100%)	1 (0%)	92	97
All	All	866/957 (90%)	855 (99%)	11 (1%)	69	87

All (11) residues with a non-rotameric sidechain are listed below:

Mol	Chain	Res	Type
1	A	51	LEU
1	A	106	SER
1	A	124	VAL
1	A	303	THR
1	A	337	PHE
1	B	46	ASP
1	B	51	LEU
1	B	142	LEU
1	B	221	LEU
1	B	303	THR
1	C	363	THR

Sometimes sidechains can be flipped to improve hydrogen bonding and reduce clashes. All (2) such sidechains are listed below:

Mol	Chain	Res	Type
1	C	52	GLN
1	C	216	GLN

5.3.3 RNA [i](#)

There are no RNA molecules in this entry.

5.4 Non-standard residues in protein, DNA, RNA chains [i](#)

There are no non-standard protein/DNA/RNA residues in this entry.

5.5 Carbohydrates [i](#)

There are no monosaccharides in this entry.

5.6 Ligand geometry

27 ligands are modelled in this entry.

In the following table, the Counts columns list the number of bonds (or angles) for which Mogul statistics could be retrieved, the number of bonds (or angles) that are observed in the model and the number of bonds (or angles) that are defined in the Chemical Component Dictionary. The Link column lists molecule types, if any, to which the group is linked. The Z score for a bond length (or angle) is the number of standard deviations the observed value is removed from the expected value. A bond length (or angle) with $|Z| > 2$ is considered an outlier worth inspection. RMSZ is the root-mean-square of all Z scores of the bond lengths (or angles).

Mol	Type	Chain	Res	Link	Bond lengths			Bond angles		
					Counts	RMSZ	# Z > 2	Counts	RMSZ	# Z > 2
4	BOG	C	408	-	20,20,20	0.56	0	25,25,25	0.82	0
2	SEY	B	402	-	3,3,3	5.16	1 (33%)	3,3,3	0.21	0
5	SPL	A	409	-	28,29,29	0.42	0	29,31,31	1.02	1 (3%)
4	BOG	A	406	-	20,20,20	0.62	0	25,25,25	0.80	1 (4%)
2	SEY	C	402	-	3,3,3	5.26	1 (33%)	3,3,3	0.23	0
4	BOG	A	405	-	20,20,20	0.52	0	25,25,25	0.72	0
4	BOG	B	407	-	20,20,20	0.64	0	25,25,25	1.12	2 (8%)
2	SEY	C	401	-	3,3,3	5.22	1 (33%)	3,3,3	0.16	0
4	BOG	C	410	-	20,20,20	0.66	1 (5%)	25,25,25	0.81	2 (8%)
2	SEY	A	401	-	3,3,3	5.43	1 (33%)	3,3,3	0.36	0
3	BGC	B	403	-	12,12,12	0.59	0	17,17,17	1.20	1 (5%)
3	BGC	C	403	-	12,12,12	0.46	0	17,17,17	0.72	0
5	SPL	A	408	-	28,29,29	0.45	0	29,31,31	1.10	2 (6%)
4	BOG	C	406	-	20,20,20	0.58	1 (5%)	25,25,25	0.69	1 (4%)
4	BOG	C	407	-	20,20,20	0.51	0	25,25,25	0.73	0
4	BOG	B	406	-	20,20,20	0.55	0	25,25,25	0.69	0
3	BGC	B	405	-	12,12,12	0.63	0	17,17,17	0.95	1 (5%)
3	BGC	A	404	-	12,12,12	0.55	0	17,17,17	1.03	1 (5%)
3	BGC	A	403	-	12,12,12	0.60	0	17,17,17	0.95	1 (5%)
3	BGC	C	404	-	12,12,12	0.45	0	17,17,17	0.63	0
2	SEY	A	402	-	3,3,3	5.22	1 (33%)	3,3,3	0.06	0
3	BGC	B	404	-	12,12,12	0.56	0	17,17,17	0.72	0
4	BOG	C	409	-	20,20,20	0.58	0	25,25,25	0.93	1 (4%)
2	SEY	B	401	-	3,3,3	5.22	1 (33%)	3,3,3	0.15	0
3	BGC	C	405	-	12,12,12	0.59	0	17,17,17	1.10	2 (11%)
5	SPL	B	408	-	28,29,29	0.41	0	29,31,31	0.77	0
4	BOG	A	407	-	20,20,20	0.60	1 (5%)	25,25,25	0.54	0

In the following table, the Chirals column lists the number of chiral outliers, the number of chiral centers analysed, the number of these observed in the model and the number defined in the Chemical Component Dictionary. Similar counts are reported in the Torsion and Rings columns. '-' means no outliers of that kind were identified.

Mol	Type	Chain	Res	Link	Chirals	Torsions	Rings
4	BOG	C	408	-	-	4/11/31/31	0/1/1/1
5	SPL	A	409	-	-	20/32/32/32	-
4	BOG	A	406	-	-	7/11/31/31	0/1/1/1
4	BOG	A	405	-	-	4/11/31/31	0/1/1/1
4	BOG	B	407	-	-	6/11/31/31	0/1/1/1
4	BOG	C	410	-	-	2/11/31/31	0/1/1/1
3	BGC	B	403	-	-	2/2/22/22	0/1/1/1
3	BGC	C	403	-	-	2/2/22/22	0/1/1/1
5	SPL	A	408	-	-	22/32/32/32	-
4	BOG	C	406	-	-	7/11/31/31	0/1/1/1
4	BOG	C	407	-	-	2/11/31/31	0/1/1/1
4	BOG	B	406	-	-	3/11/31/31	0/1/1/1
3	BGC	B	405	-	-	0/2/22/22	0/1/1/1
3	BGC	A	404	-	-	2/2/22/22	0/1/1/1
3	BGC	A	403	-	-	2/2/22/22	0/1/1/1
3	BGC	C	404	-	-	2/2/22/22	0/1/1/1
3	BGC	B	404	-	-	1/2/22/22	0/1/1/1
4	BOG	C	409	-	-	7/11/31/31	0/1/1/1
3	BGC	C	405	-	-	2/2/22/22	0/1/1/1
5	SPL	B	408	-	-	15/32/32/32	-
4	BOG	A	407	-	-	5/11/31/31	0/1/1/1

All (9) bond length outliers are listed below:

Mol	Chain	Res	Type	Atoms	Z	Observed(Å)	Ideal(Å)
2	A	401	SEY	SE-C	-9.40	1.55	1.86
2	C	402	SEY	SE-C	-9.10	1.56	1.86
2	A	402	SEY	SE-C	-9.04	1.56	1.86
2	B	401	SEY	SE-C	-9.04	1.56	1.86
2	C	401	SEY	SE-C	-9.04	1.56	1.86
2	B	402	SEY	SE-C	-8.93	1.56	1.86
4	C	410	BOG	O1-C1	2.14	1.43	1.40
4	C	406	BOG	O1-C1	2.02	1.43	1.40
4	A	407	BOG	O1-C1	2.02	1.43	1.40

All (16) bond angle outliers are listed below:

Mol	Chain	Res	Type	Atoms	Z	Observed(°)	Ideal(°)
5	A	409	SPL	C1-C2-N2	3.77	115.27	109.27
4	B	407	BOG	C1-C2-C3	3.42	117.12	110.00
5	A	408	SPL	C2-N2-C19	3.34	129.10	123.48
4	B	407	BOG	C4-C3-C2	3.11	116.25	110.82
5	A	408	SPL	C1-C2-N2	3.03	114.09	109.27
3	B	403	BGC	C1-C2-C3	-2.85	104.40	110.31
3	C	405	BGC	C3-C4-C5	2.55	114.78	110.24
4	C	410	BOG	C1-C2-C3	2.26	114.69	110.00
3	A	404	BGC	O3-C3-C2	2.23	115.51	110.35
4	C	406	BOG	O1-C1-C2	2.17	111.69	108.30
4	C	409	BOG	O1-C1-C2	2.17	111.69	108.30
4	A	406	BOG	C4-C3-C2	2.16	114.60	110.82
3	C	405	BGC	O5-C5-C6	2.09	111.64	106.44
3	A	403	BGC	O5-C5-C4	-2.05	105.97	109.69
3	B	405	BGC	C4-C3-C2	2.05	114.40	110.82
4	C	410	BOG	O5-C5-C6	2.01	111.43	106.44

There are no chirality outliers.

All (117) torsion outliers are listed below:

Mol	Chain	Res	Type	Atoms
4	B	407	BOG	C2'-C1'-O1-C1
5	A	408	SPL	C1-C2-N2-C19
5	A	408	SPL	C1-C2-C3-O3
5	A	408	SPL	C1-C2-C3-C4
5	A	408	SPL	N2-C2-C3-O3
5	A	408	SPL	N2-C2-C3-C4
5	A	408	SPL	C2-C3-C4-C5
5	A	408	SPL	O3-C3-C4-C5
5	A	409	SPL	C1-C2-N2-C19
5	A	409	SPL	C1-C2-C3-O3
5	A	409	SPL	C1-C2-C3-C4
5	A	409	SPL	C20-C19-N2-C2
5	A	409	SPL	C2-C3-C4-C5
5	A	409	SPL	O3-C3-C4-C5
5	B	408	SPL	C1-C2-C3-O3
5	B	408	SPL	C1-C2-C3-C4
5	B	408	SPL	N2-C2-C3-C4
5	B	408	SPL	C2-C3-C4-C5
5	A	409	SPL	O19-C19-N2-C2
4	B	407	BOG	O5-C5-C6-O6

Continued on next page...

Continued from previous page...

Mol	Chain	Res	Type	Atoms
4	C	409	BOG	O5-C5-C6-O6
5	A	409	SPL	C19-C20-C21-C22
4	A	406	BOG	O5-C5-C6-O6
5	B	408	SPL	C19-C20-C21-C22
3	C	404	BGC	C4-C5-C6-O6
4	B	407	BOG	C4-C5-C6-O6
3	B	403	BGC	O5-C5-C6-O6
3	C	404	BGC	O5-C5-C6-O6
4	B	406	BOG	O5-C5-C6-O6
3	A	404	BGC	C4-C5-C6-O6
4	A	407	BOG	C4-C5-C6-O6
4	C	409	BOG	C4-C5-C6-O6
4	C	406	BOG	C4-C5-C6-O6
3	C	405	BGC	O5-C5-C6-O6
4	A	406	BOG	C4-C5-C6-O6
3	A	403	BGC	O5-C5-C6-O6
3	B	403	BGC	C4-C5-C6-O6
4	B	406	BOG	C4-C5-C6-O6
4	A	407	BOG	O5-C5-C6-O6
4	C	406	BOG	O5-C5-C6-O6
4	C	408	BOG	O1-C1'-C2'-C3'
5	B	408	SPL	N2-C19-C20-C21
5	B	408	SPL	O19-C19-C20-C21
3	A	404	BGC	O5-C5-C6-O6
4	A	406	BOG	O1-C1'-C2'-C3'
3	A	403	BGC	C4-C5-C6-O6
4	B	407	BOG	C3'-C4'-C5'-C6'
5	A	408	SPL	C7-C8-C9-C10
5	A	408	SPL	C21-C22-C23-C24
4	B	407	BOG	C4'-C5'-C6'-C7'
5	B	408	SPL	O3-C3-C4-C5
5	B	408	SPL	C22-C23-C24-C25
4	A	405	BOG	O5-C5-C6-O6
4	C	410	BOG	C2-C1-O1-C1'
5	A	408	SPL	C22-C23-C24-C25
5	A	409	SPL	C22-C23-C24-C25
4	A	406	BOG	C2'-C1'-O1-C1
4	C	407	BOG	C4'-C5'-C6'-C7'
4	C	407	BOG	O1-C1'-C2'-C3'
3	B	404	BGC	O5-C5-C6-O6
4	C	406	BOG	O1-C1'-C2'-C3'
4	C	406	BOG	C4'-C5'-C6'-C7'

Continued on next page...

Continued from previous page...

Mol	Chain	Res	Type	Atoms
4	A	407	BOG	O5-C1-O1-C1'
4	C	410	BOG	O5-C1-O1-C1'
4	C	409	BOG	C1'-C2'-C3'-C4'
4	C	409	BOG	C4'-C5'-C6'-C7'
4	A	407	BOG	C2-C1-O1-C1'
5	A	408	SPL	C3-C2-N2-C19
5	A	408	SPL	C12-C13-C14-C15
3	C	403	BGC	C4-C5-C6-O6
3	C	405	BGC	C4-C5-C6-O6
4	C	408	BOG	C1'-C2'-C3'-C4'
4	B	407	BOG	O1-C1'-C2'-C3'
4	A	406	BOG	C5'-C6'-C7'-C8'
5	A	409	SPL	C21-C22-C23-C24
5	A	408	SPL	C15-C16-C17-C18
4	C	406	BOG	C3'-C4'-C5'-C6'
5	B	408	SPL	C12-C13-C14-C15
4	A	406	BOG	C3'-C4'-C5'-C6'
4	C	406	BOG	C2'-C3'-C4'-C5'
5	B	408	SPL	C10-C11-C12-C13
4	C	408	BOG	C5'-C6'-C7'-C8'
4	C	406	BOG	C5'-C6'-C7'-C8'
5	A	409	SPL	C15-C16-C17-C18
5	A	409	SPL	C12-C13-C14-C15
5	A	409	SPL	C9-C10-C11-C12
4	A	405	BOG	C4'-C5'-C6'-C7'
5	A	408	SPL	C11-C10-C9-C8
4	C	408	BOG	C2'-C3'-C4'-C5'
5	A	409	SPL	C23-C24-C25-C26
5	A	409	SPL	C13-C14-C15-C16
4	A	405	BOG	C5'-C6'-C7'-C8'
5	A	408	SPL	C20-C21-C22-C23
5	A	409	SPL	O1-C1-C2-C3
5	A	408	SPL	C19-C20-C21-C22
5	B	408	SPL	C15-C16-C17-C18
4	C	409	BOG	O5-C1-O1-C1'
5	B	408	SPL	N2-C2-C3-O3
4	C	409	BOG	C2-C1-O1-C1'
5	B	408	SPL	C7-C8-C9-C10
4	A	405	BOG	O1-C1'-C2'-C3'
4	B	406	BOG	C2'-C3'-C4'-C5'
5	A	408	SPL	C5-C6-C7-C8
5	A	409	SPL	C20-C21-C22-C23

Continued on next page...

Continued from previous page...

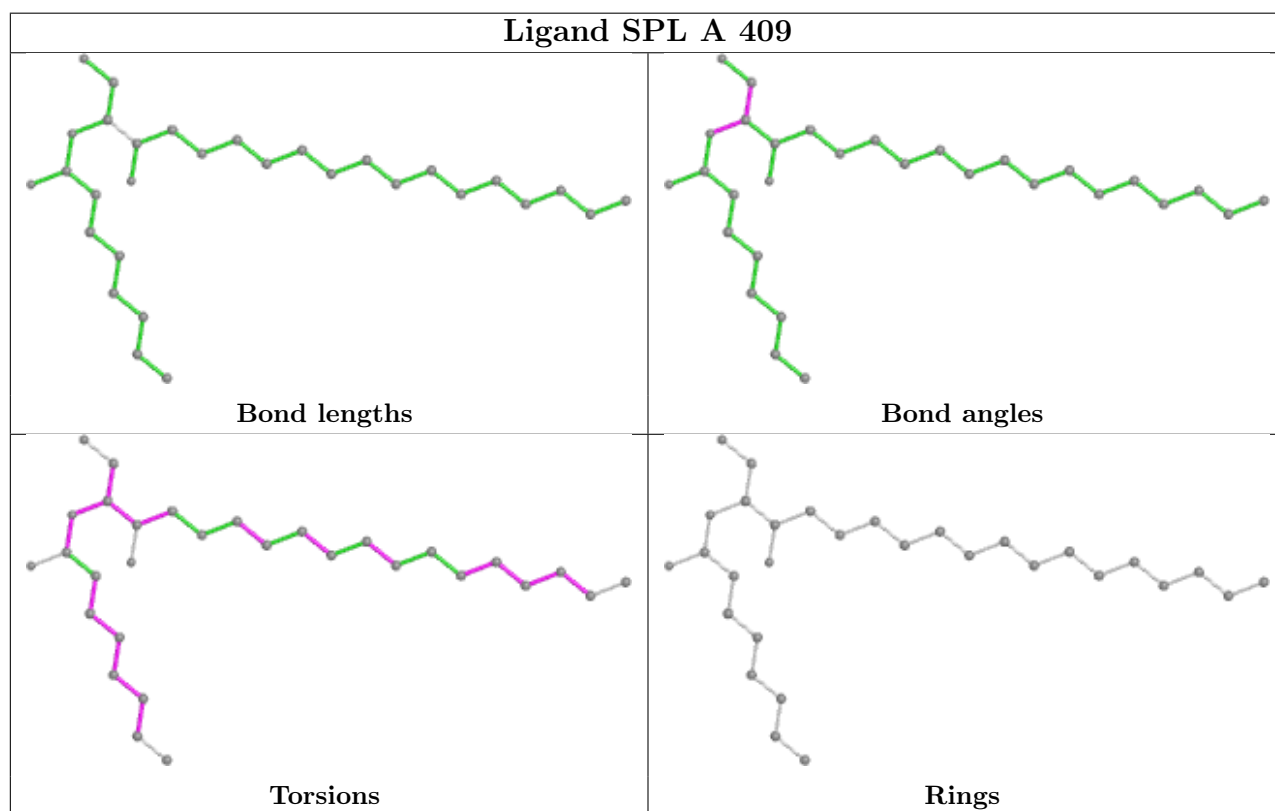
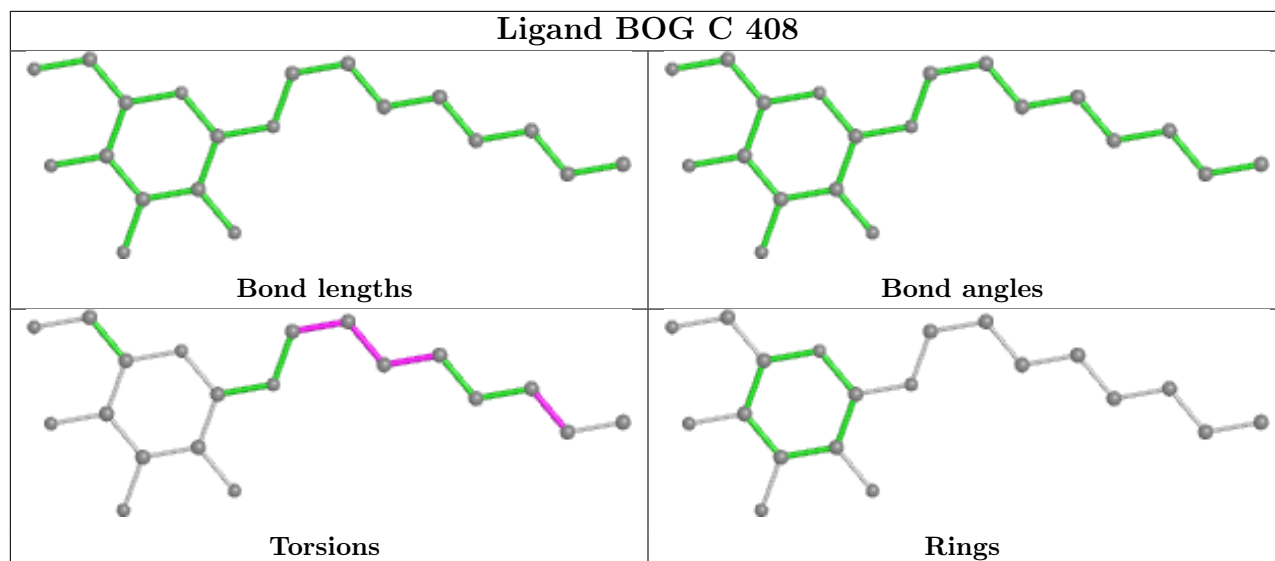
Mol	Chain	Res	Type	Atoms
5	A	408	SPL	C6-C7-C8-C9
5	A	409	SPL	C7-C8-C9-C10
4	A	407	BOG	C3'-C4'-C5'-C6'
5	A	408	SPL	O19-C19-C20-C21
5	A	409	SPL	C5-C6-C7-C8
5	A	408	SPL	C10-C11-C12-C13
4	C	409	BOG	C3'-C4'-C5'-C6'
5	A	408	SPL	N2-C19-C20-C21
5	A	408	SPL	C23-C24-C25-C26
5	B	408	SPL	C6-C7-C8-C9
5	A	409	SPL	C14-C15-C16-C17
3	C	403	BGC	O5-C5-C6-O6
4	A	406	BOG	C1'-C2'-C3'-C4'

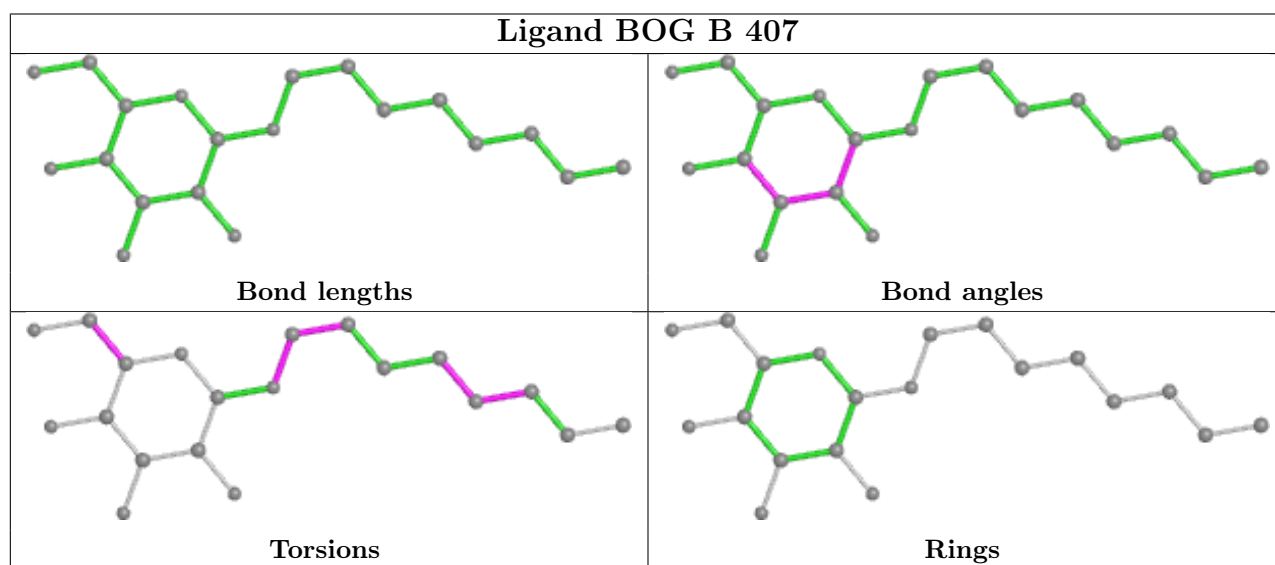
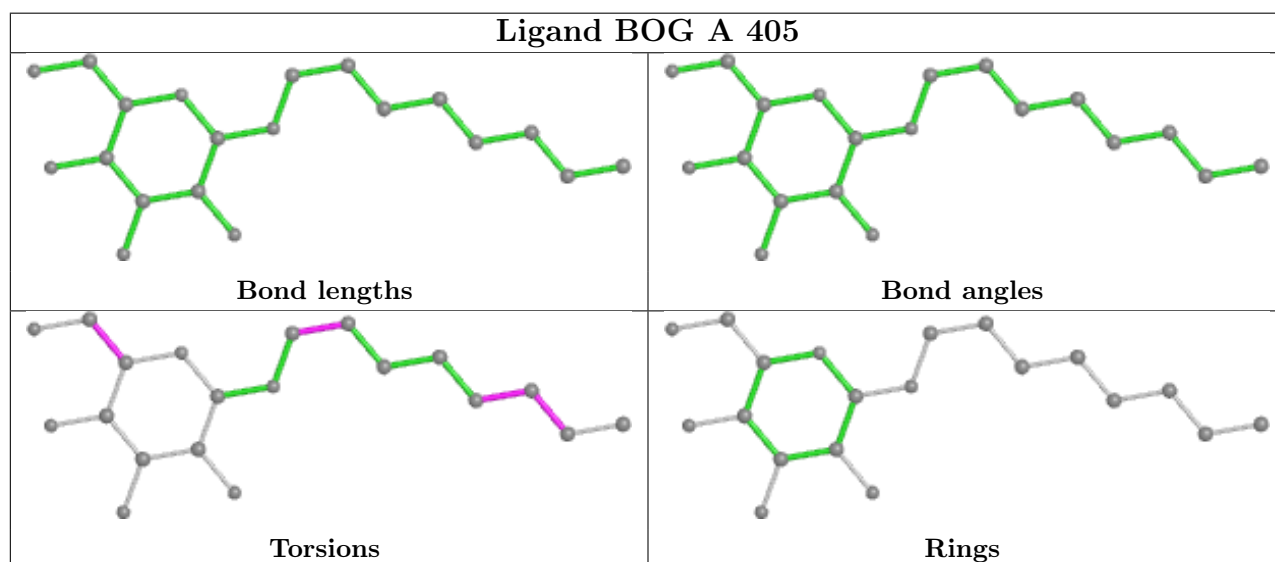
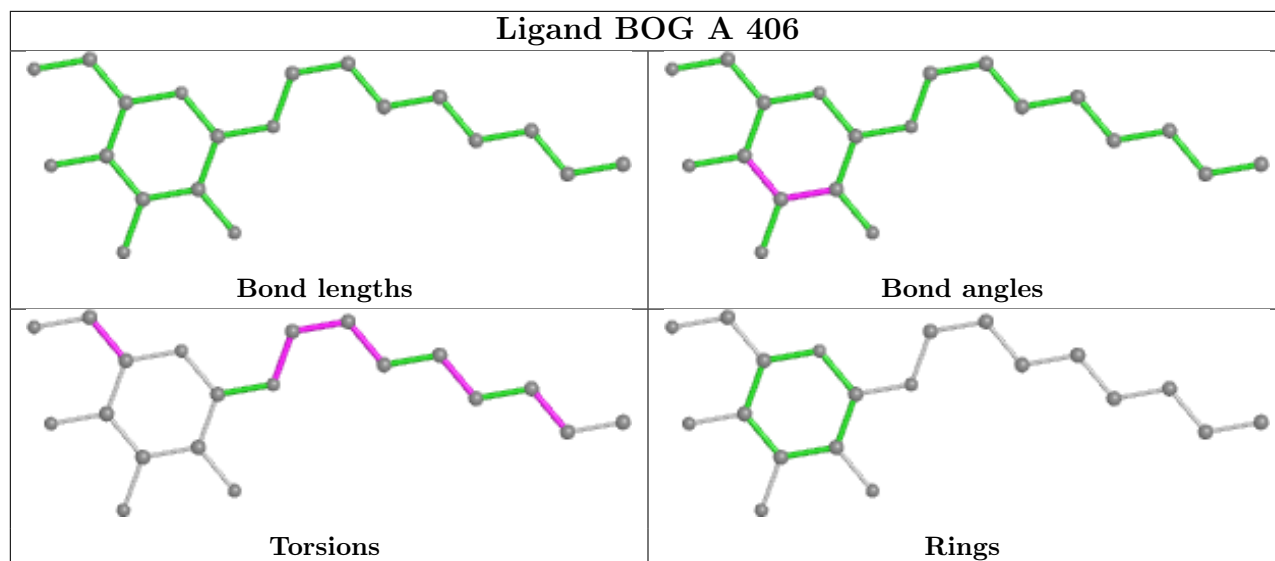
There are no ring outliers.

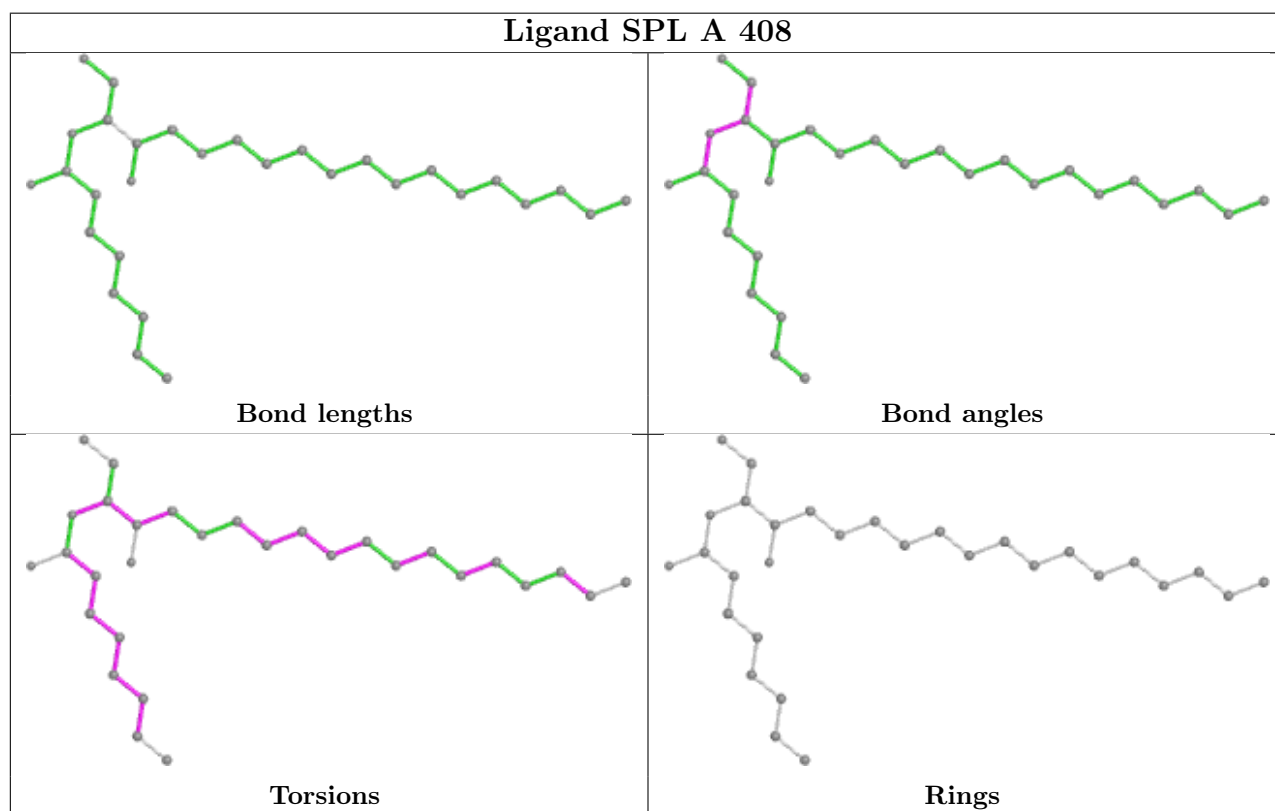
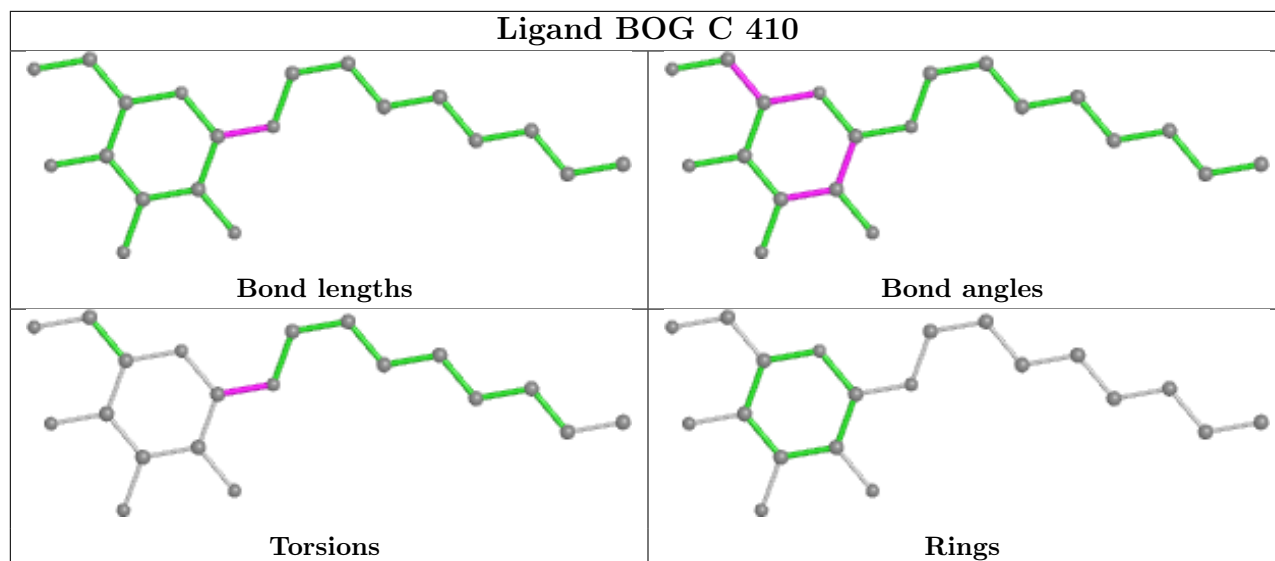
8 monomers are involved in 8 short contacts:

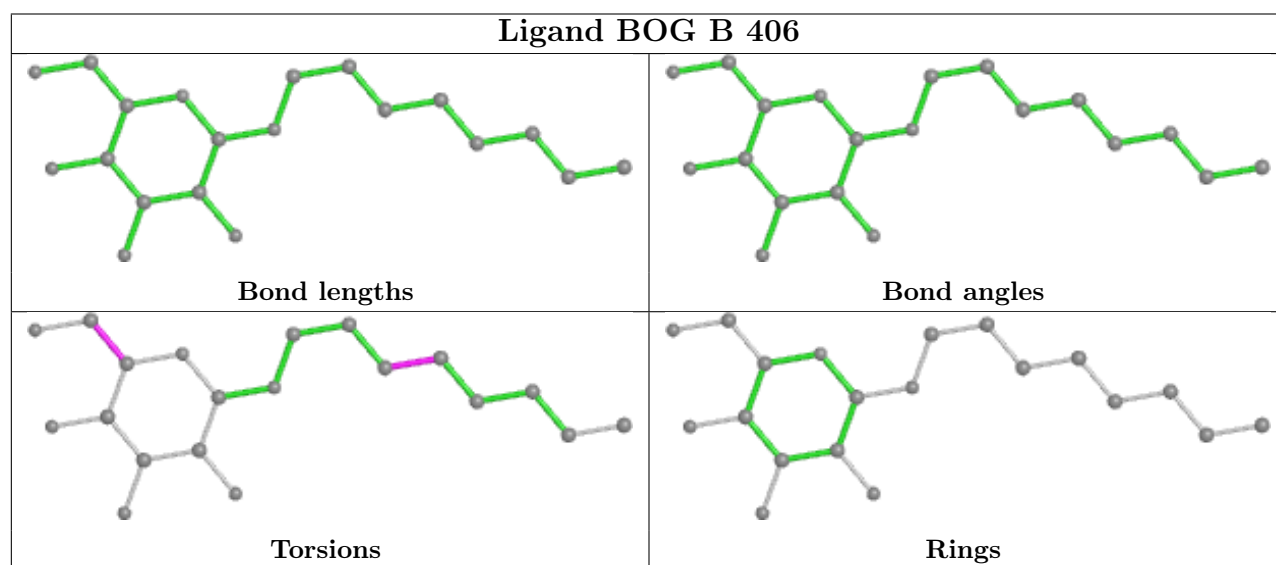
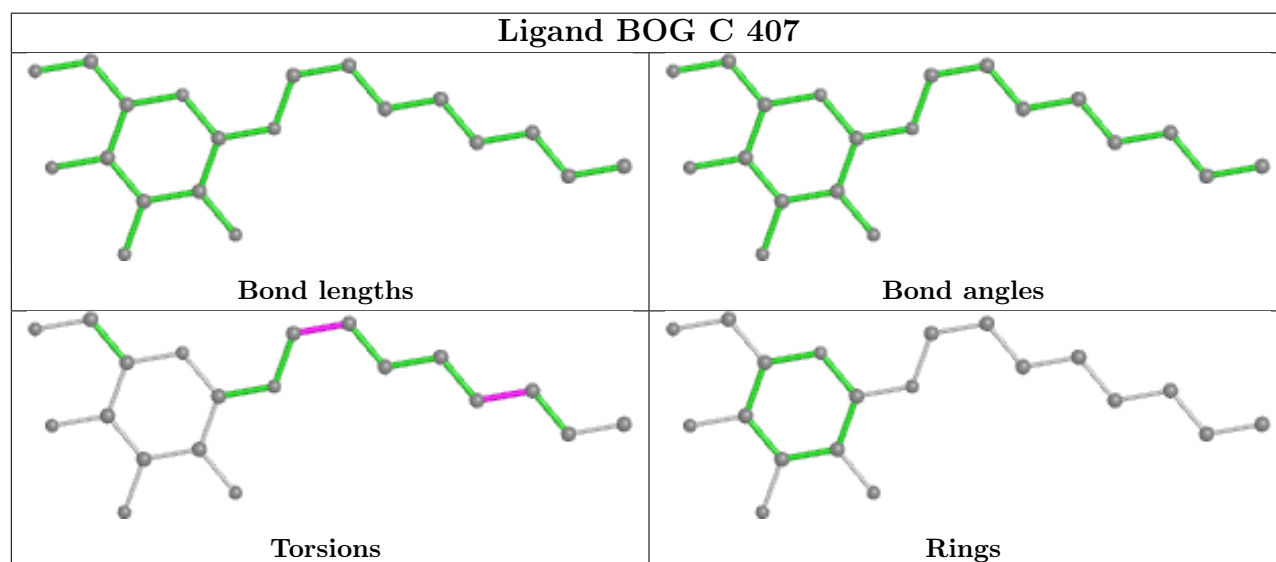
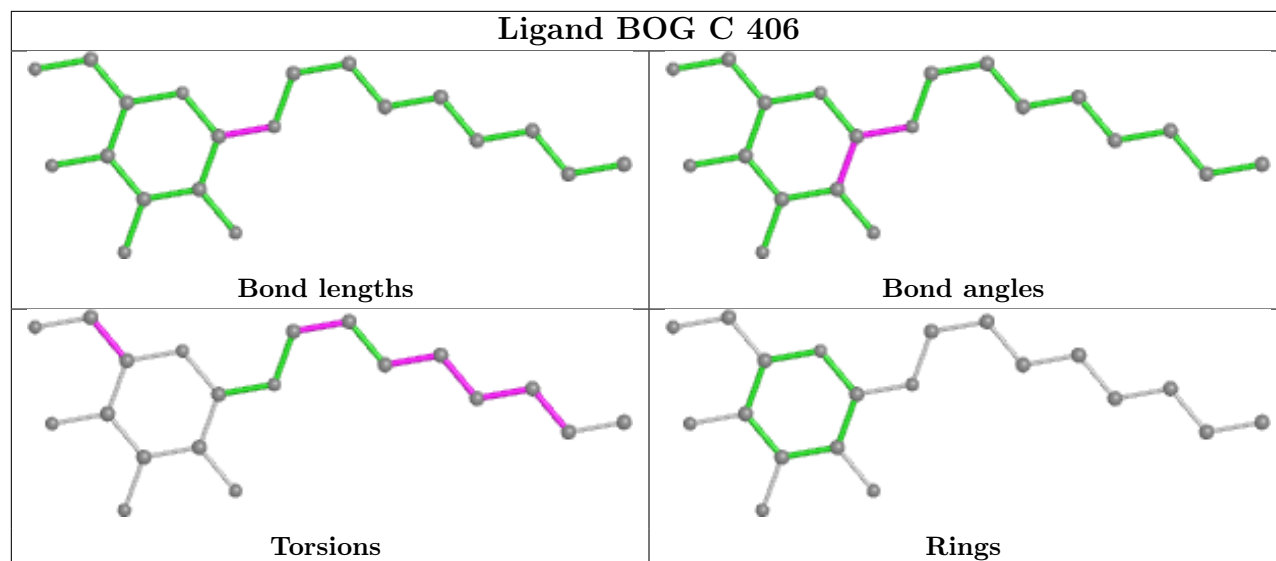
Mol	Chain	Res	Type	Clashes	Symm-Clashes
4	A	406	BOG	1	0
4	A	405	BOG	2	0
4	C	410	BOG	1	0
5	A	408	SPL	1	0
4	C	407	BOG	1	0
3	A	403	BGC	1	0
3	C	405	BGC	1	0
4	A	407	BOG	1	0

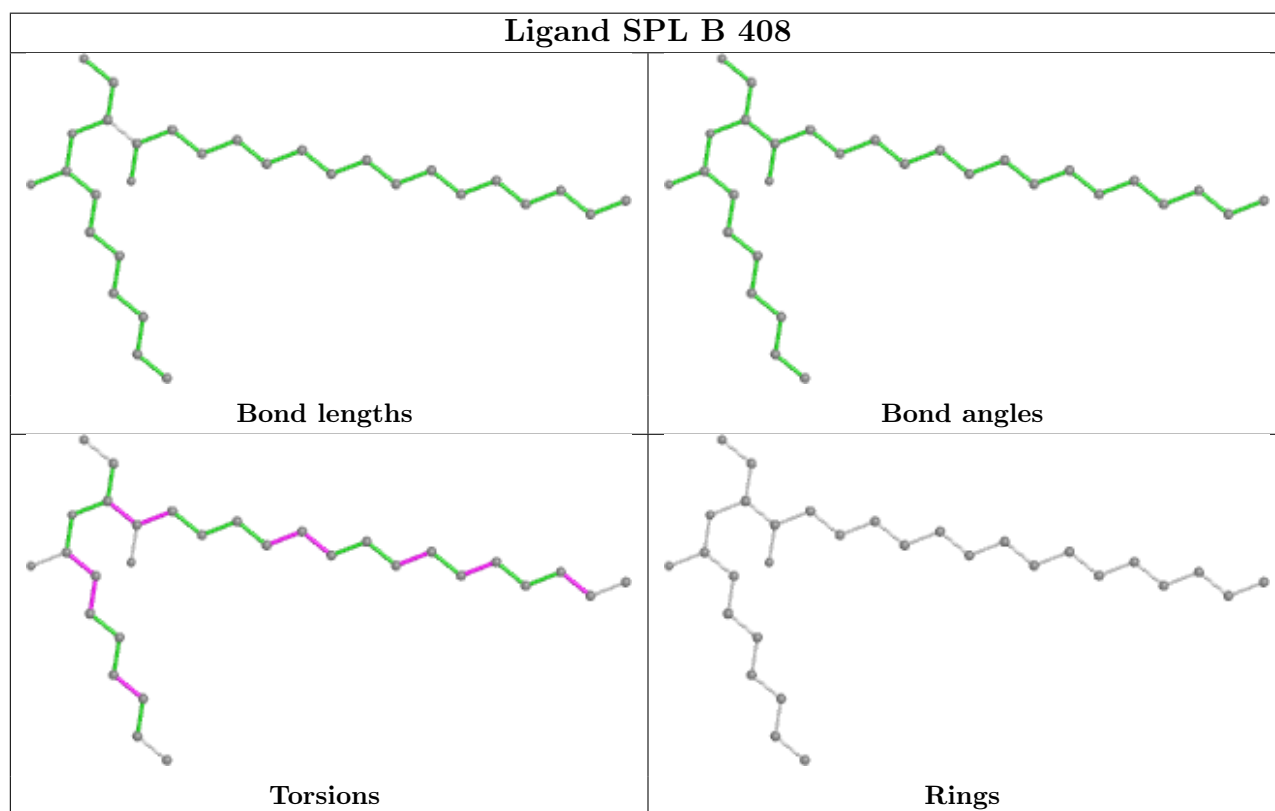
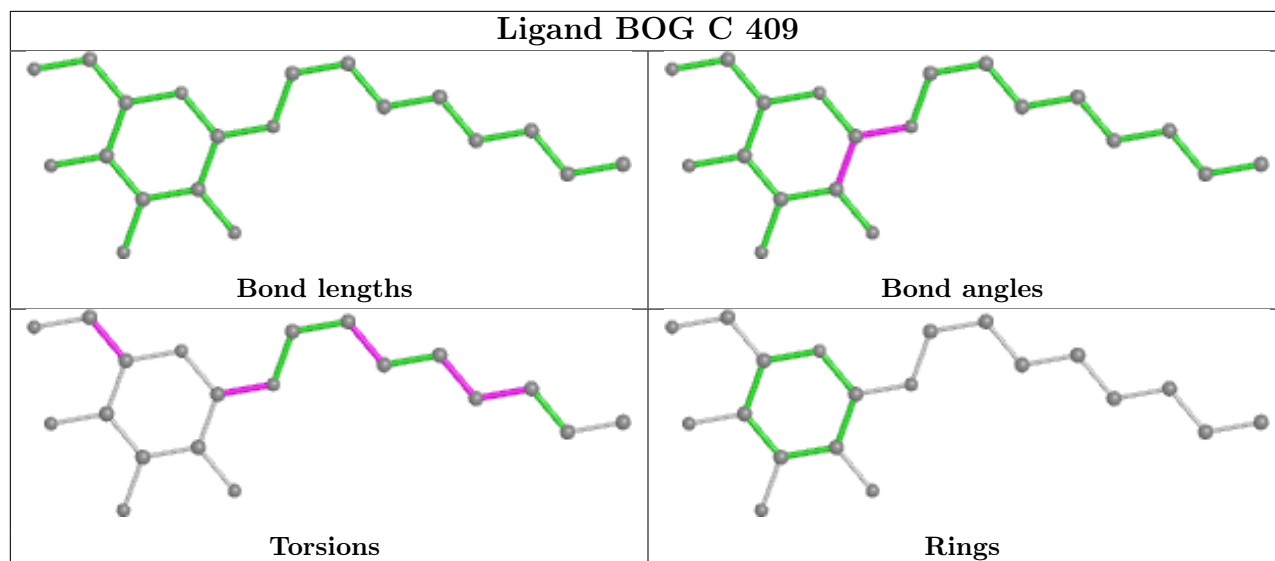
The following is a two-dimensional graphical depiction of Mogul quality analysis of bond lengths, bond angles, torsion angles, and ring geometry for all instances of the Ligand of Interest. In addition, ligands with molecular weight > 250 and outliers as shown on the validation Tables will also be included. For torsion angles, if less than 5% of the Mogul distribution of torsion angles is within 10 degrees of the torsion angle in question, then that torsion angle is considered an outlier. Any bond that is central to one or more torsion angles identified as an outlier by Mogul will be highlighted in the graph. For rings, the root-mean-square deviation (RMSD) between the ring in question and similar rings identified by Mogul is calculated over all ring torsion angles. If the average RMSD is greater than 60 degrees and the minimal RMSD between the ring in question and any Mogul-identified rings is also greater than 60 degrees, then that ring is considered an outlier. The outliers are highlighted in purple. The color gray indicates Mogul did not find sufficient equivalents in the CSD to analyse the geometry.

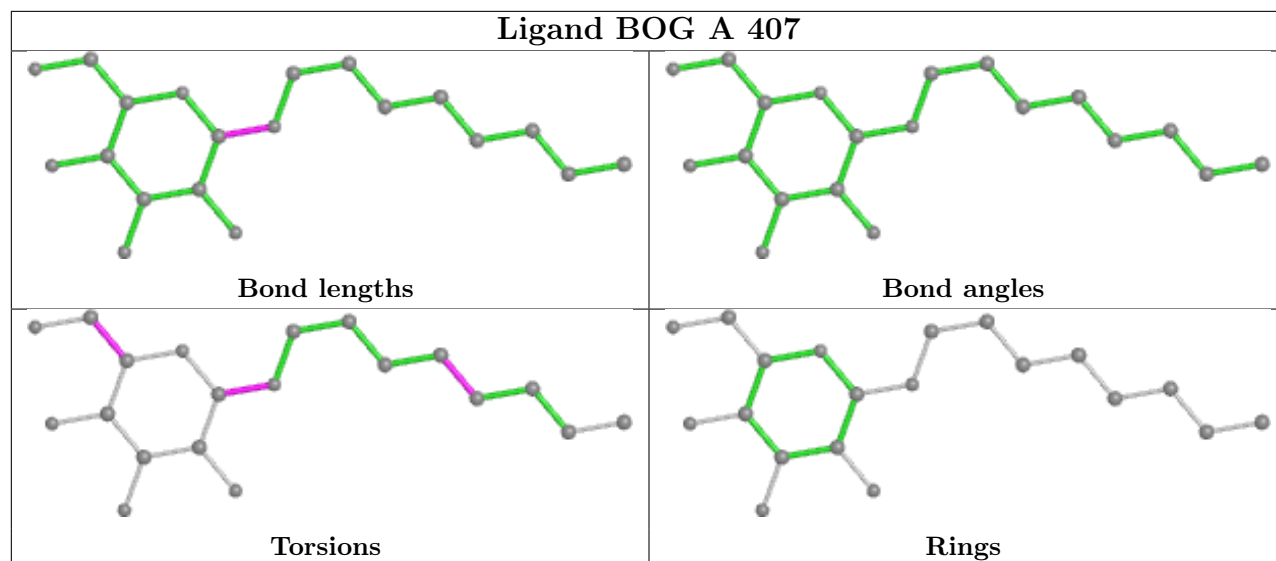












5.7 Other polymers [i](#)

There are no such residues in this entry.

5.8 Polymer linkage issues [i](#)

There are no chain breaks in this entry.

6 Fit of model and data

6.1 Protein, DNA and RNA chains

In the following table, the column labelled ‘#RSRZ > 2’ contains the number (and percentage) of RSRZ outliers, followed by percent RSRZ outliers for the chain as percentile scores relative to all X-ray entries and entries of similar resolution. The OWAB column contains the minimum, median, 95th percentile and maximum values of the occupancy-weighted average B-factor per residue. The column labelled ‘Q < 0.9’ lists the number of (and percentage) of residues with an average occupancy less than 0.9.

Mol	Chain	Analysed	<RSRZ>	#RSRZ>2	OWAB(Å ²)	Q<0.9
1	A	345/384 (89%)	0.01	15 (4%) 35 38	30, 45, 89, 110	0
1	B	346/384 (90%)	0.05	18 (5%) 27 29	30, 45, 82, 115	0
1	C	346/384 (90%)	0.02	13 (3%) 40 43	31, 47, 95, 117	0
All	All	1037/1152 (90%)	0.03	46 (4%) 34 37	30, 46, 86, 117	0

All (46) RSRZ outliers are listed below:

Mol	Chain	Res	Type	RSRZ
1	B	46	ASP	8.7
1	C	43	TRP	6.5
1	B	43	TRP	6.3
1	B	44	LEU	6.1
1	B	42	ASN	6.1
1	A	32	TYR	5.6
1	C	32	TYR	5.6
1	B	82	VAL	5.4
1	C	41	ALA	5.3
1	C	47	LYS	5.2
1	B	47	LYS	4.8
1	A	49	GLN	4.5
1	A	43	TRP	4.4
1	A	51	LEU	4.1
1	C	51	LEU	3.9
1	C	40	PHE	3.8
1	B	51	LEU	3.8
1	B	41	ALA	3.7
1	B	375	SER	3.7
1	A	39	GLU	3.7
1	A	50	ALA	3.7
1	C	46	ASP	3.6
1	B	32	TYR	3.4

Continued on next page...

Continued from previous page...

Mol	Chain	Res	Type	RSRZ
1	B	371	PHE	3.4
1	A	53	PHE	3.2
1	C	48	PRO	3.2
1	B	40	PHE	2.9
1	C	39	GLU	2.9
1	B	45	LYS	2.9
1	A	42	ASN	2.9
1	A	40	PHE	2.8
1	C	33	ILE	2.8
1	A	301	TRP	2.6
1	A	34	THR	2.6
1	A	48	PRO	2.5
1	B	235	TRP	2.5
1	B	39	GLU	2.4
1	C	50	ALA	2.4
1	C	104	LEU	2.3
1	A	299	LEU	2.2
1	B	209	TRP	2.2
1	A	375	SER	2.1
1	A	57	VAL	2.1
1	B	48	PRO	2.1
1	B	350	LYS	2.0
1	C	38	LYS	2.0

6.2 Non-standard residues in protein, DNA, RNA chains [i](#)

There are no non-standard protein/DNA/RNA residues in this entry.

6.3 Carbohydrates [i](#)

There are no monosaccharides in this entry.

6.4 Ligands [i](#)

In the following table, the Atoms column lists the number of modelled atoms in the group and the number defined in the chemical component dictionary. The B-factors column lists the minimum, median, 95th percentile and maximum values of B factors of atoms in the group. The column labelled 'Q< 0.9' lists the number of atoms with occupancy less than 0.9.

Continued on next page...

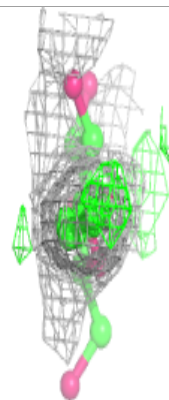
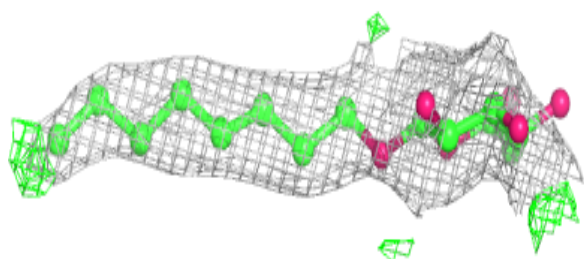
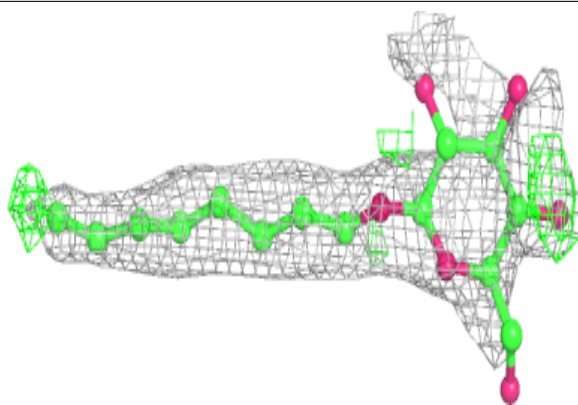
Continued from previous page...

Mol	Type	Chain	Res	Atoms	RSCC	RSR	B-factors(Å ²)	Q<0.9
4	BOG	A	407	20/20	0.66	0.33	56,99,111,111	0
4	BOG	C	410	20/20	0.73	0.42	54,101,110,118	0
3	BGC	A	404	12/12	0.75	0.29	65,71,76,78	0
4	BOG	B	407	20/20	0.76	0.23	72,98,108,108	0
3	BGC	C	405	12/12	0.76	0.20	70,76,82,85	0
5	SPL	A	409	30/30	0.76	0.40	54,63,69,74	0
3	BGC	B	405	12/12	0.77	0.20	65,75,77,80	0
3	BGC	B	404	12/12	0.78	0.17	76,80,81,82	0
5	SPL	B	408	30/30	0.79	0.43	59,67,75,79	0
3	BGC	C	404	12/12	0.80	0.23	74,80,88,88	0
4	BOG	B	406	20/20	0.81	0.33	60,96,104,105	0
5	SPL	A	408	30/30	0.82	0.36	52,59,70,75	0
4	BOG	C	409	20/20	0.82	0.24	61,80,88,90	0
4	BOG	A	405	20/20	0.82	0.25	57,79,98,106	0
3	BGC	B	403	12/12	0.83	0.22	63,70,73,74	0
3	BGC	A	403	12/12	0.84	0.16	58,70,79,85	0
3	BGC	C	403	12/12	0.85	0.24	76,86,90,91	0
4	BOG	C	407	20/20	0.86	0.35	54,81,93,93	0
4	BOG	A	406	20/20	0.88	0.23	60,71,79,81	0
4	BOG	C	408	20/20	0.89	0.26	66,75,83,83	0
4	BOG	C	406	20/20	0.90	0.24	66,69,75,77	0
2	SEY	B	402	4/4	0.94	0.13	65,72,75,80	0
2	SEY	C	402	4/4	0.95	0.11	75,77,80,81	0
2	SEY	A	402	4/4	0.98	0.09	68,70,74,75	0
2	SEY	A	401	4/4	0.98	0.12	50,51,54,60	4
2	SEY	B	401	4/4	0.99	0.08	42,43,46,57	4
2	SEY	C	401	4/4	0.99	0.07	40,46,46,56	4

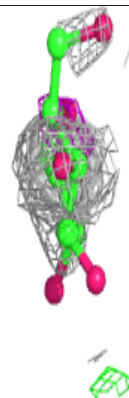
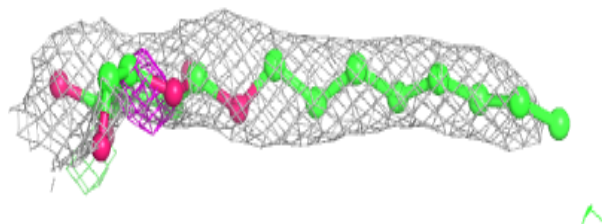
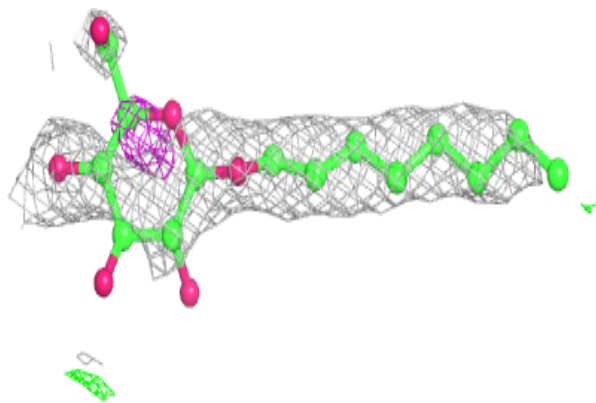
The following is a graphical depiction of the model fit to experimental electron density of all instances of the Ligand of Interest. In addition, ligands with molecular weight > 250 and outliers as shown on the geometry validation Tables will also be included. Each fit is shown from different orientation to approximate a three-dimensional view.

Electron density around BOG A 407:

$2mF_o-DF_c$ (at 0.7 rmsd) in gray
 mF_o-DF_c (at 3 rmsd) in purple (negative)
and green (positive)

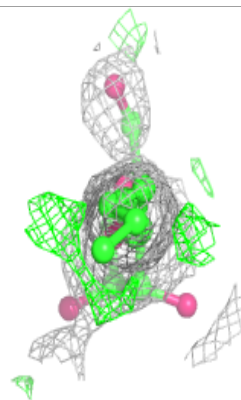
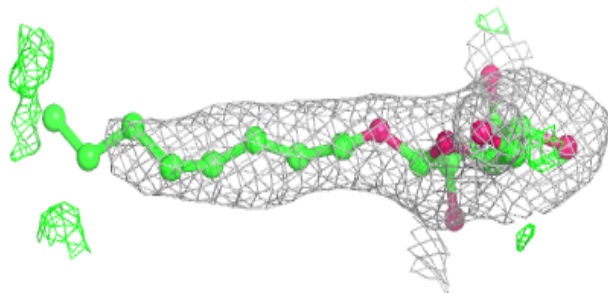
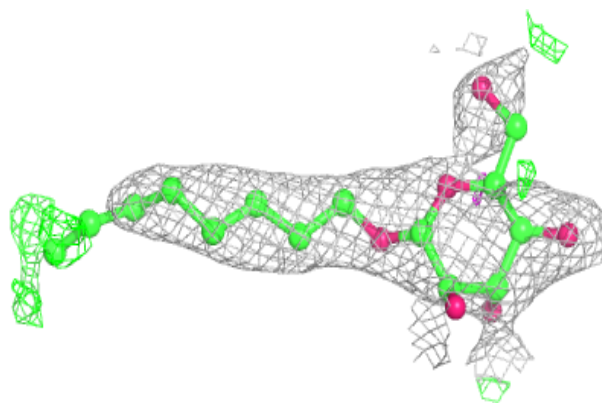
**Electron density around BOG C 410:**

$2mF_o-DF_c$ (at 0.7 rmsd) in gray
 mF_o-DF_c (at 3 rmsd) in purple (negative)
and green (positive)

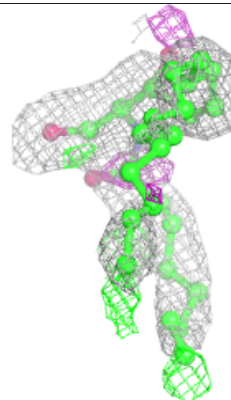
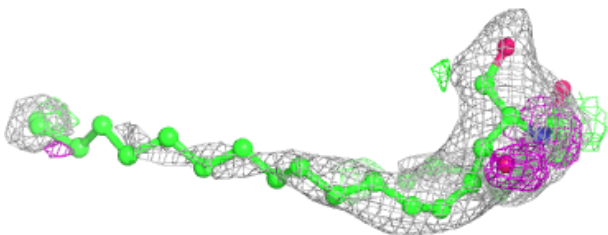
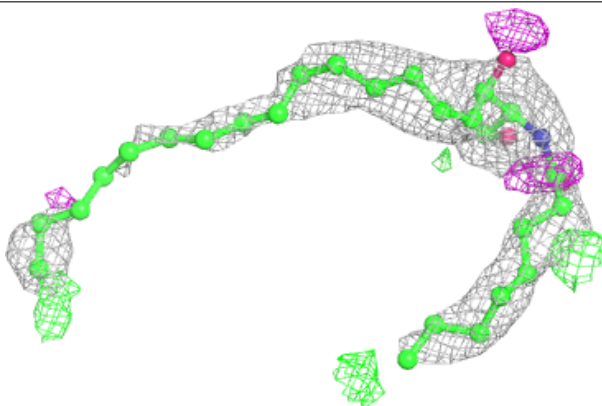


Electron density around BOG B 407:

$2mF_o-DF_c$ (at 0.7 rmsd) in gray
 mF_o-DF_c (at 3 rmsd) in purple (negative)
and green (positive)

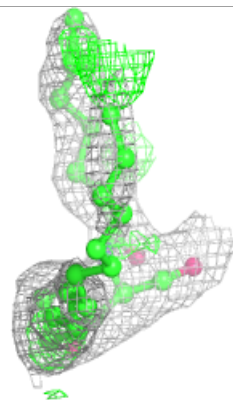
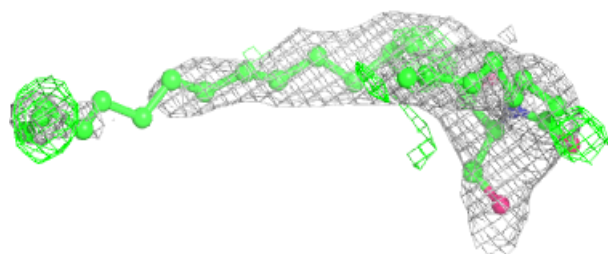
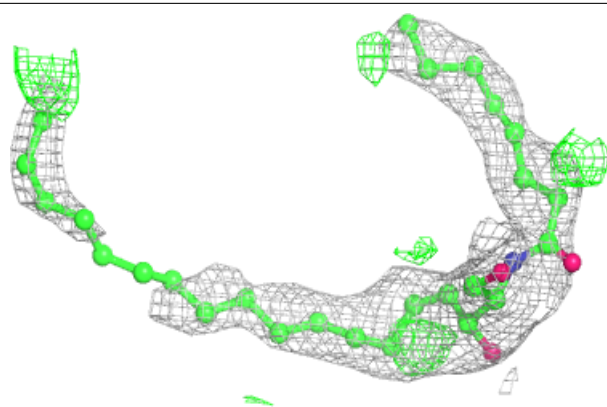
**Electron density around SPL A 409:**

$2mF_o-DF_c$ (at 0.7 rmsd) in gray
 mF_o-DF_c (at 3 rmsd) in purple (negative)
and green (positive)

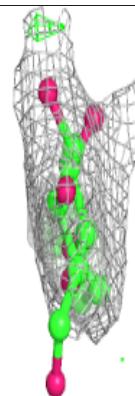
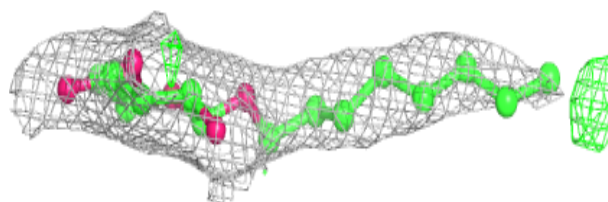
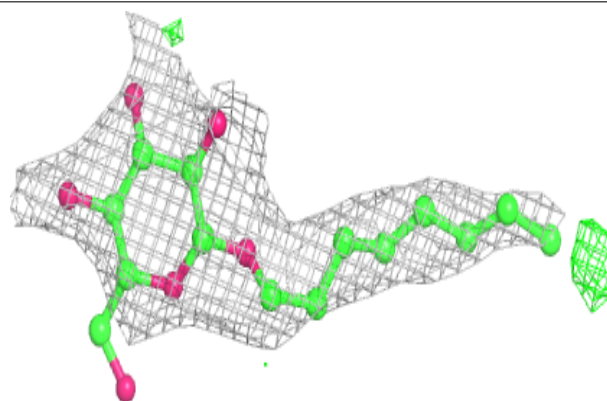


Electron density around SPL B 408:

$2mF_o-DF_c$ (at 0.7 rmsd) in gray
 mF_o-DF_c (at 3 rmsd) in purple (negative)
and green (positive)

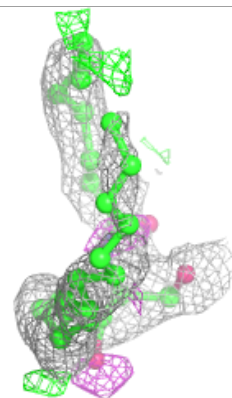
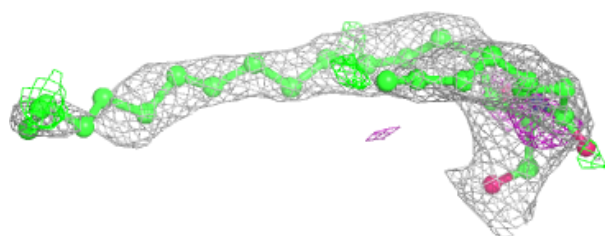
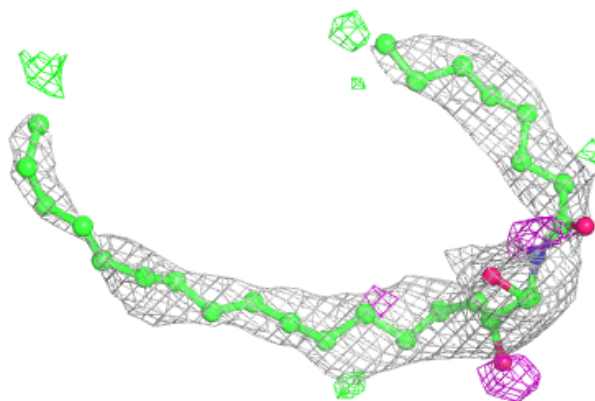
**Electron density around BOG B 406:**

$2mF_o-DF_c$ (at 0.7 rmsd) in gray
 mF_o-DF_c (at 3 rmsd) in purple (negative)
and green (positive)

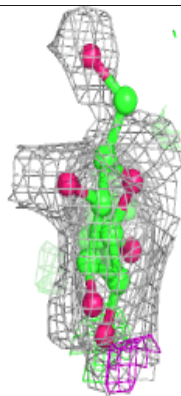
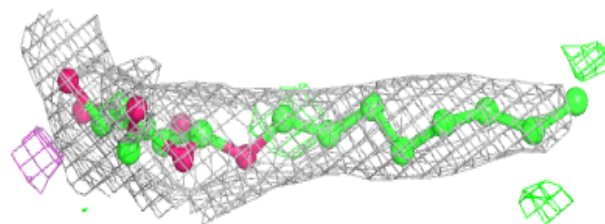
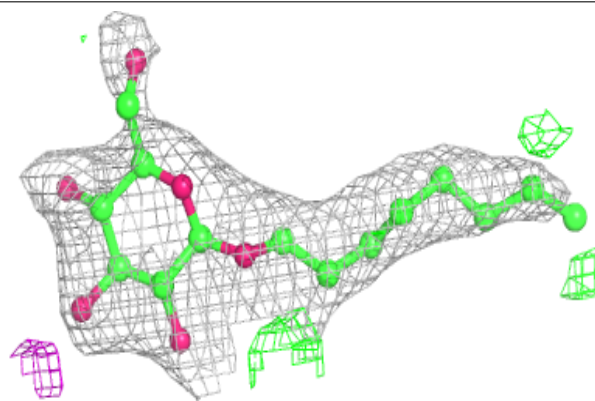


Electron density around SPL A 408:

$2mF_o-DF_c$ (at 0.7 rmsd) in gray
 mF_o-DF_c (at 3 rmsd) in purple (negative)
and green (positive)

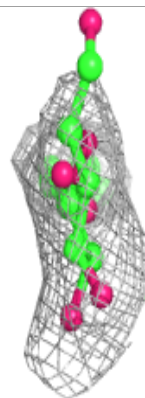
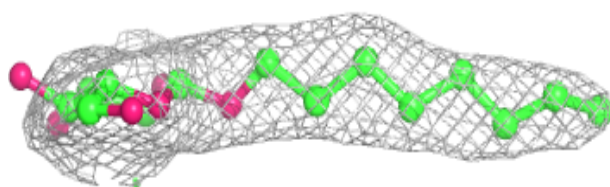
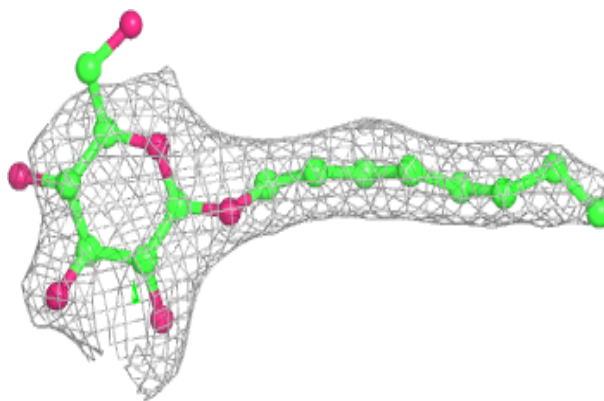
**Electron density around BOG C 409:**

$2mF_o-DF_c$ (at 0.7 rmsd) in gray
 mF_o-DF_c (at 3 rmsd) in purple (negative)
and green (positive)

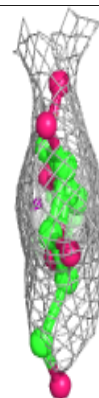
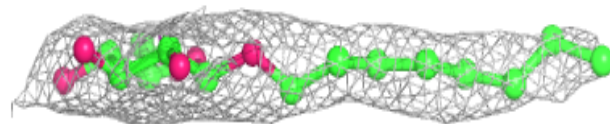
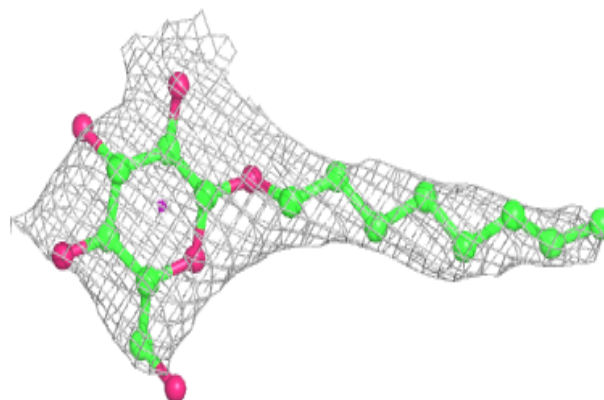


Electron density around BOG A 405:

$2mF_o-DF_c$ (at 0.7 rmsd) in gray
 mF_o-DF_c (at 3 rmsd) in purple (negative)
and green (positive)

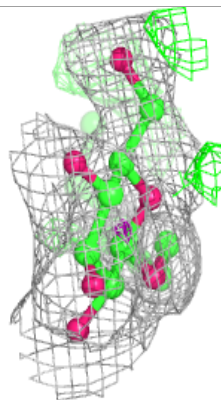
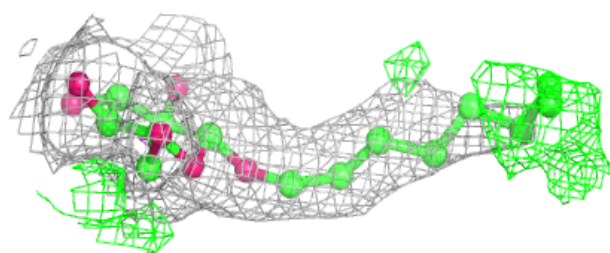
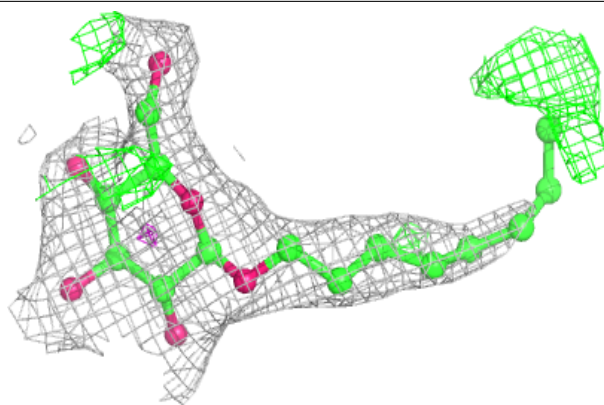
**Electron density around BOG C 407:**

$2mF_o-DF_c$ (at 0.7 rmsd) in gray
 mF_o-DF_c (at 3 rmsd) in purple (negative)
and green (positive)

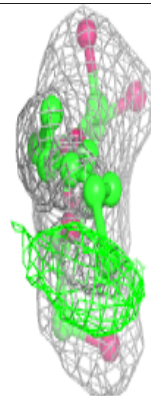
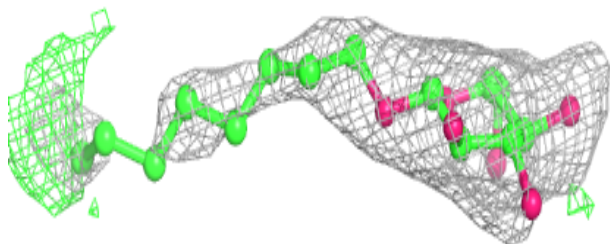
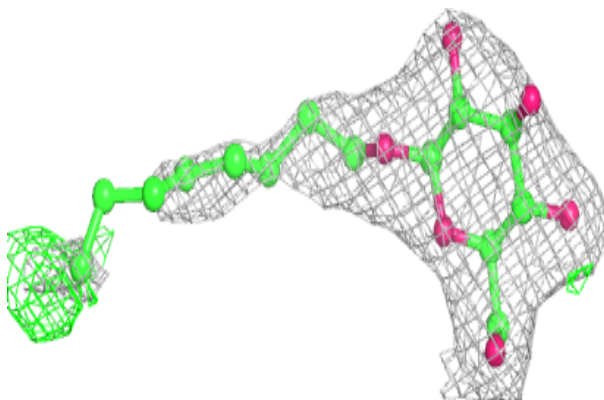


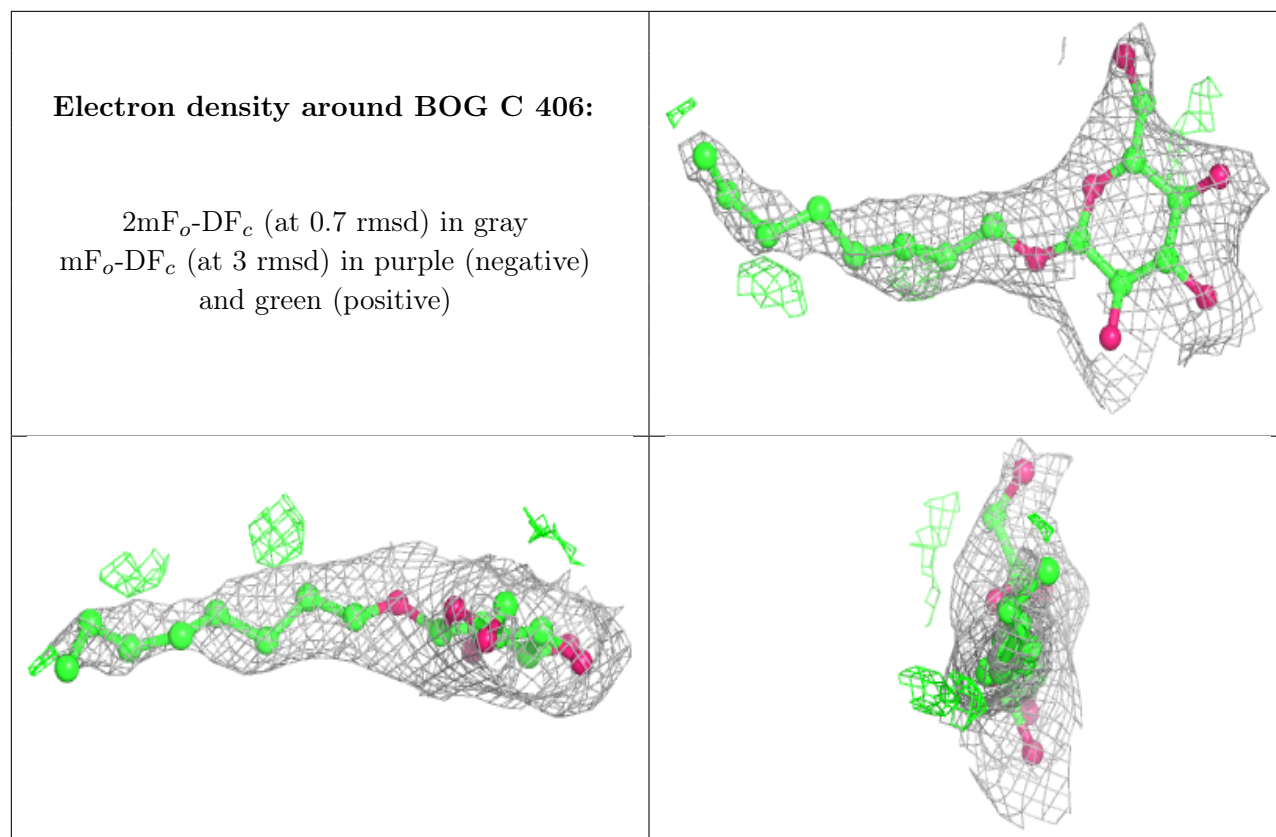
Electron density around BOG A 406:

$2mF_o-DF_c$ (at 0.7 rmsd) in gray
 mF_o-DF_c (at 3 rmsd) in purple (negative)
and green (positive)

**Electron density around BOG C 408:**

$2mF_o-DF_c$ (at 0.7 rmsd) in gray
 mF_o-DF_c (at 3 rmsd) in purple (negative)
and green (positive)





6.5 Other polymers [i](#)

There are no such residues in this entry.